

FEATURES & BENEFITS

DIMENSIONS

(L x W x H) 18-3/4 x 15-11/16 x 40-3/4"

APPROXIMATE SHIPPING WEIGHT

87 lbs.

ELECTRICAL

115V, 60Hz, 120W, 1A

VANDAL-RESISTANT FRONT PUSH BUTTON

Water will dispense from bubbler without power. The push-button activated valve offers the only all stainless steel valve body that is machined out of solid bar stock, is fully serviceable through the front of the push button assembly offering access to the water control cartridge and integral water supply strainer, and with front access to the water stream height adjustment.

BOTTLE FILLER

Flow Rate: 1.1 GPM Quick fill sensor-operated bottle filler is accessible to all users, has LED lighting to illuminate the fill area, and an integral basin that drains directly to the waste.

VANDAL-RESISTANT BUBBLER HEAD

Bubbler features a stainless steel bubbler head. Anti-rotational design prevents unwanted attempts to remove or rotate the head.

NSF/ANSI CERTIFIED FILTRATION

Included 6428 filter provides NSF/ANSI certified filtration for Lead/Microplastics/Taste and Odor. Can be upgraded to NSF/ANSI certified PFAS/PFOA 6445 filter.

AUTO PURGE

Bottle filler automatically purges the water line after 24 hours of non-use to prevent the development and growth of Legionella and other harmful bacteria.

ELECTRONIC DISPLAY

Intuitive LED electronic display educates users when the bottle filler is activated and how many plastic bottles have been saved. Vandal-resistant sensor resists scratching and water droplet fowling.

NON-CHILLED

The reliable non-chilled fountain saves energy to provide a constant water source.

VANDAL-RESISTANT SENSOR

Best-in-Class bottle filler sensor resistant to scratching from knives or razors, abrasion, dirt and regular use buildup

UNIVERSAL MOUNTING

Specially designed internal configuration allows for mounting over existing competitors rough-ins.

OPTIONS

- 6428 - NSF/ANSI Certified Lead/Microplastics/Taste & Odor Replacement Filter
- 6445 - NSF/ANSI Certified PFAS/PFOA Filter
- BP1210-11 - Stainless Steel Back Panel
- Model SK6 - Floor mounted cane detection block

For more information, visit www.hawsco.com or call (888) 640-4297.



SPECIFICATIONS

Model 1211SFVN vandal resistant, filtered, wall-mounted non-chilled indoor wall-mount indoor unit with dual fountain design in 304 satin-finish stainless steel. Features include vandal-resistant stainless steel anti-rotational bubbler heads, model 5874 solid bar stock steel push button, and scratch resistant LED-illuminated bottle filler. Energy-saving mode powers down unit and lights after 2 hours of inactivity; programmable for specific days of the week. Digital LED interface displays status and error codes. Bottle filler drains to waste and auto-purges after 24 hours of non-use.

APPLICATIONS

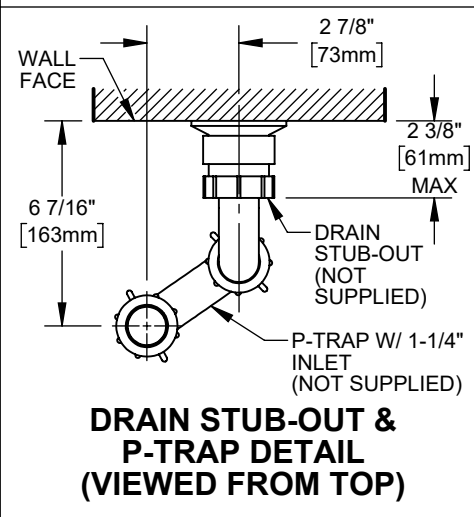
Great for schools, office buildings, shopping malls, and other indoor environments where there is a demand for a drinking water source. CSA certified to comply with NSF/ANSI/CAN 61: Q ≤ 1, NSF/ANSI/CAN 372, ASME A112.18.1/CSA B125.1, UL 399 and CSA C22.2 No. 120. ADA compliant to ICC A117.1, CSA B651, DOJ's 2010 ADA Standards for Accessible Design when properly installed. FCC and CAN ICES – 3(A)/NMB-3(A). Electric water coolers are not recommended or designed for outdoor applications or enclosed pool areas (chlorine), and failure to heed these conditions may void warranty.



NOTES:

- HOLD PLUMBING & ELECTRICAL DIMENSIONS $\pm 1/4"$ (6.4mm). HOLD MOUNTING DIMENSIONS $\pm 1/8"$ [± 3.2 MM].
- ADHERING TO PROVIDED INSTALLATION HEIGHT DIMENSIONS WILL ALLOW A SINGLE WATER COOLER (OR THE LOW WATER COOLER IN A HI-LO INSTALLATION), AND THE BOTTLE FILLER (IF APPLICABLE) TO BE INSTALLED AT ADULT ADA HEIGHT. FOR INSTALLATION HEIGHTS OTHER THAN SHOWN, DIMENSIONS MARKED (*) MUST BE ADJUSTED ACCORDINGLY. WHEN INSTALLING THIS UNIT, LOCAL, STATE, OR FEDERAL CODES SHOULD BE ADHERED TO.

TYPICAL SINGLE (OR LOW) UNIT INSTALLATION (CHILLER COMPONENTS HIDDEN FOR CLARITY)



120VAC GFCI-PROTECTED ELECTRICAL RECEPTACLE, MIN. 15A SERVICE (USE STANDARD SIZE 4.5 X 2.75" WALLPLATE). DEDICATED CIRCUIT RECOMMENDED

DRAIN STUB-OUT (NOT SUPPLIED)

P-TRAP W/ 1-1/4" INLET (NOT SUPPLIED)

* 19 7/8" [505mm]

* 12" [305mm]

2X $\phi 7/16"$ [11mm]

SUPPLY VALVE (NOT SUPPLIED; REC. 90° VALVE W/ 1/2" IPS SUPPLY & 3/8" COMPRESSION OR QUICK CONNECT TUBING OUTLET)

4 1/4" [108mm]

2 5/8" [67mm]

11 7/8" [302mm]

FLOOR LINE

MOUNTING BRACKET

15 11/16" [399mm]

2X 12 1/2" [318mm]

4X $\phi 9/32"$ [7mm]

2X 1 3/4" [44mm]

* 24 3/4" [629mm]

* 28 3/8" [721mm] LOWER BRACKET HOLES

* 2X 13 7/8" [352mm]

* 33" [839mm] BUBBLER

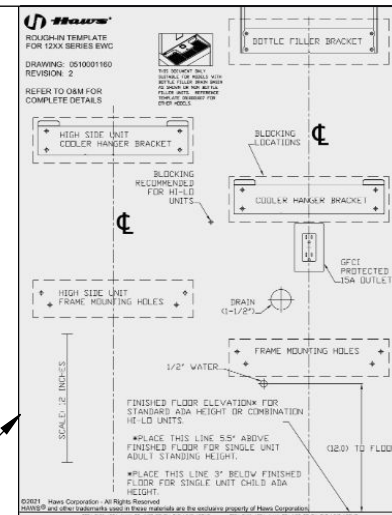
* 27" [686mm] KNEE CLEARANCE

* 35 5/16" [897mm]

* 26 1/4" [667mm]

* 9 1/16" [230mm] TOE CLEARANCE

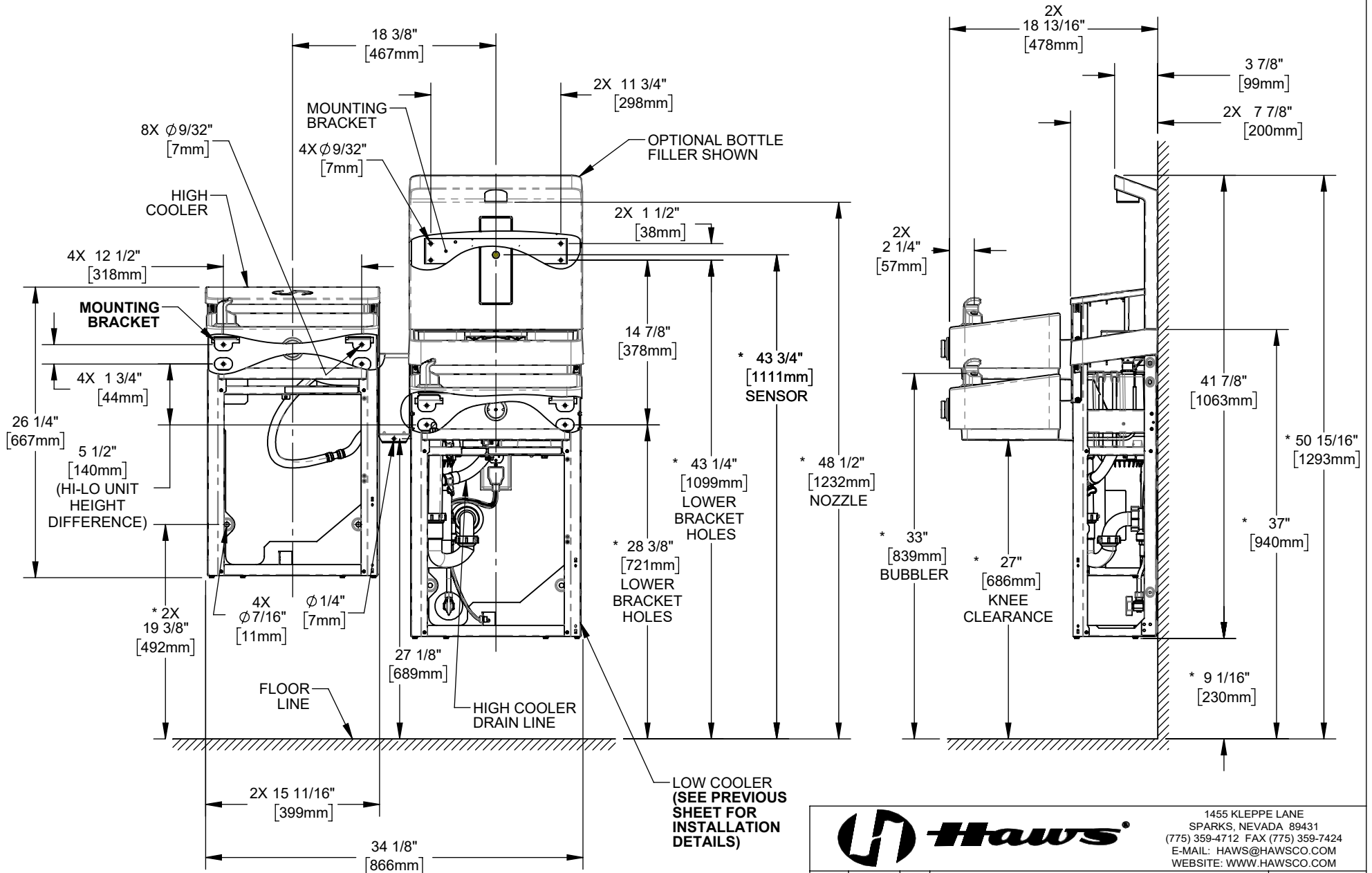
FULL SCALE
ROUGH-IN TEMPLATE
MODEL MTG.1200
AVAILABLE UPON REQUEST.



1455 KLEPPE LANE
SPARKS, NEVADA 89431
(775) 359-4712 FAX (775) 359-7424
E-MAIL: HAWS@HAWS.CO.COM
WEBSITE: WWW.HAWS.CO.COM

| | | | | |
|--------------|----------------|-------------|--|---------------------------|
| ECN: 6367 | REV. ECN: 6367 | BY: DHP | MODEL(S): 12XXV ELECTRIC WATER COOLERS | PART NUMBER: 0510002340.D |
| DRAWN: DHP | DATE: 10/31/25 | CHKD: DHP | | REVISION: 1 |
| APPROVED: TM | DATE: 12/18/25 | SCALE: 1:12 | DRAWING TYPE: INSTALLATION | SHEET 1 OF 7 |

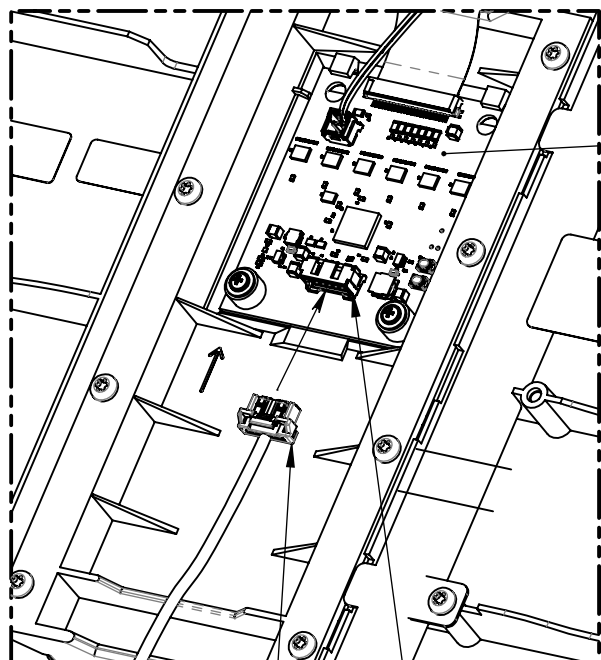
TYPICAL HI-LO UNIT INSTALLATION (CHILLER COMPONENTS HIDDEN FOR CLARITY)



1455 KLEPPE LANE
SPARKS, NEVADA 89431
(775) 359-4712 FAX (775) 359-7424
E-MAIL: HAWS@HAWS.CO.COM
WEBSITE: WWW.HAWS.CO.COM

| | | | | |
|--------------|----------------|-------------|---------------------------------------|--------------------------|
| ECN: 6367 | REV. ECN: 6367 | BY: DHP | MODEL(S) 12XXV ELECTRIC WATER COOLERS | PART NUMBER 0510002340.D |
| DRAWN: DHP | DATE: 10/31/25 | CHKD: DHP | | REVISION 1 |
| APPROVED: TM | DATE: 12/18/25 | SCALE: 1:12 | DRAWING TYPE: INSTALLATION | SIZE: A SHEET 2 OF 7 |

BOTTLE FILLER INSTALLATION DETAILS

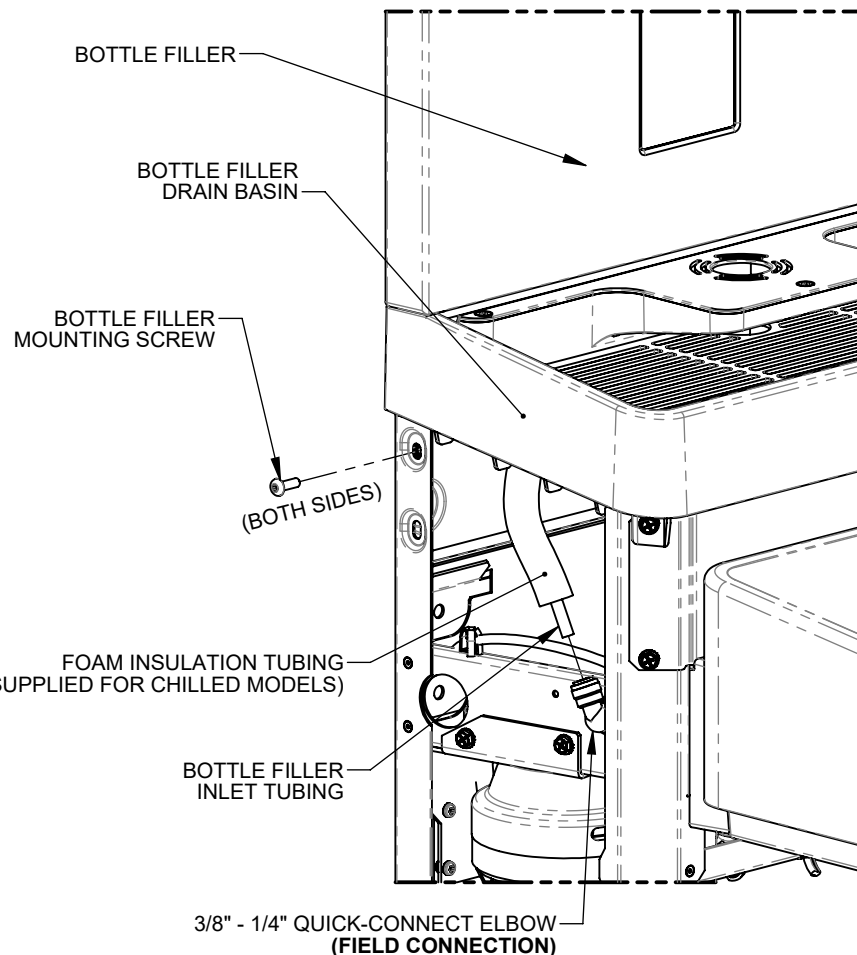


CIRCUIT BOARD

WIRING HARNESS FROM COOLER

WIRING HARNESS RECEPTACLE (FIELD CONNECTION)

WIRING HARNESS CONNECTION (REAR OF BOTTLE FILLER)



BOTTLE FILLER

BOTTLE FILLER DRAIN BASIN

BOTTLE FILLER MOUNTING SCREW

(BOTH SIDES)

FOAM INSULATION TUBING (SUPPLIED FOR CHILLED MODELS)

BOTTLE FILLER INLET TUBING

3/8" - 1/4" QUICK-CONNECT ELBOW (FIELD CONNECTION)

BOTTLE FILLER MOUNTING & TUBING CONNECTION

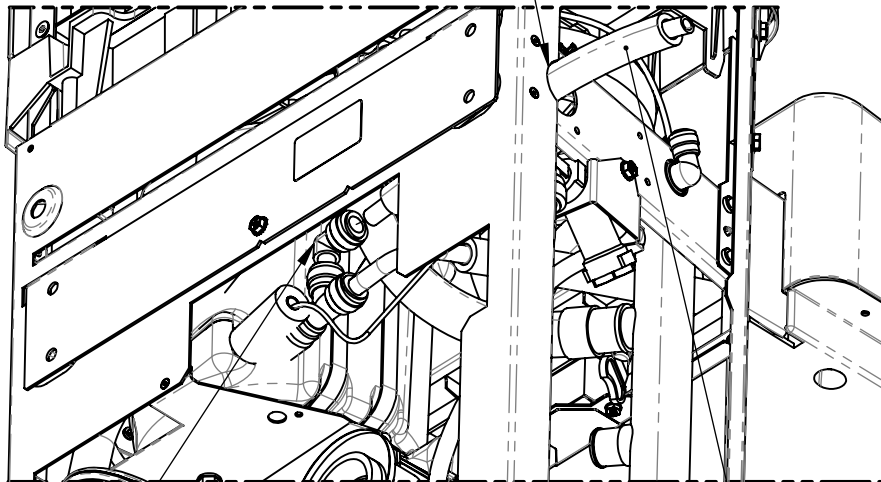


1455 KLEPPE LANE
SPARKS, NEVADA 89431
(775) 359-4712 FAX (775) 359-7424
E-MAIL: HAWS@HAWS.CO.COM
WEBSITE: WWW.HAWS.CO.COM

| | | | | |
|--------------|----------------|-------------|------------------------------|--------------|
| ECN: 6367 | REV. ECN: 6367 | BY: DHP | MODEL(S) | PART NUMBER |
| DRAWN: DHP | DATE: 10/31/25 | CHKD: DHP | 12XXV ELECTRIC WATER COOLERS | 0510002340.D |
| APPROVED: TM | DATE: 12/18/25 | SCALE: 1:12 | DRAWING TYPE: INSTALLATION | REVISION |
| | | | SIZE: A | 1 |
| | | | | SHEET 3 OF 7 |

HIGH EWC INSTALLATION DETAILS

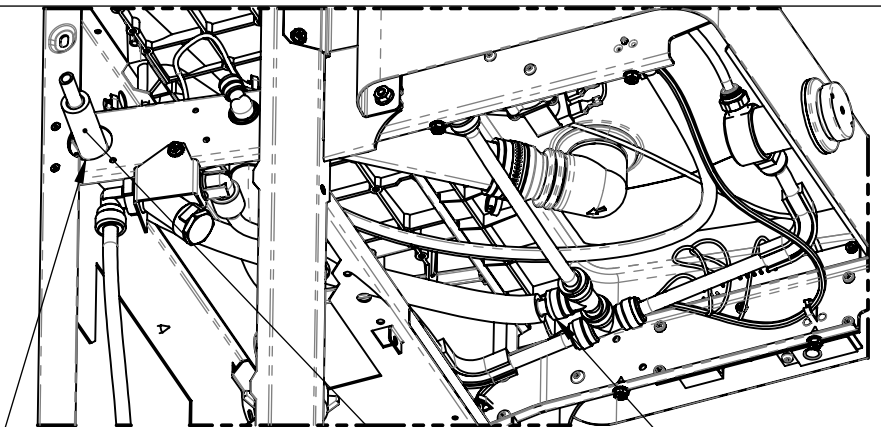
ROUTE TUBING
THROUGH CIRCULAR
HOLE IN SHEET METAL



3/8" ELBOW
(FIELD CONNECTION)

FOAM INSULATION
TUBING & 3/8" TUBING
(SUPPLIED)

HIGH EWC TUBING CONNECTION (ON LOW COOLER) FOR CHILLED MODELS



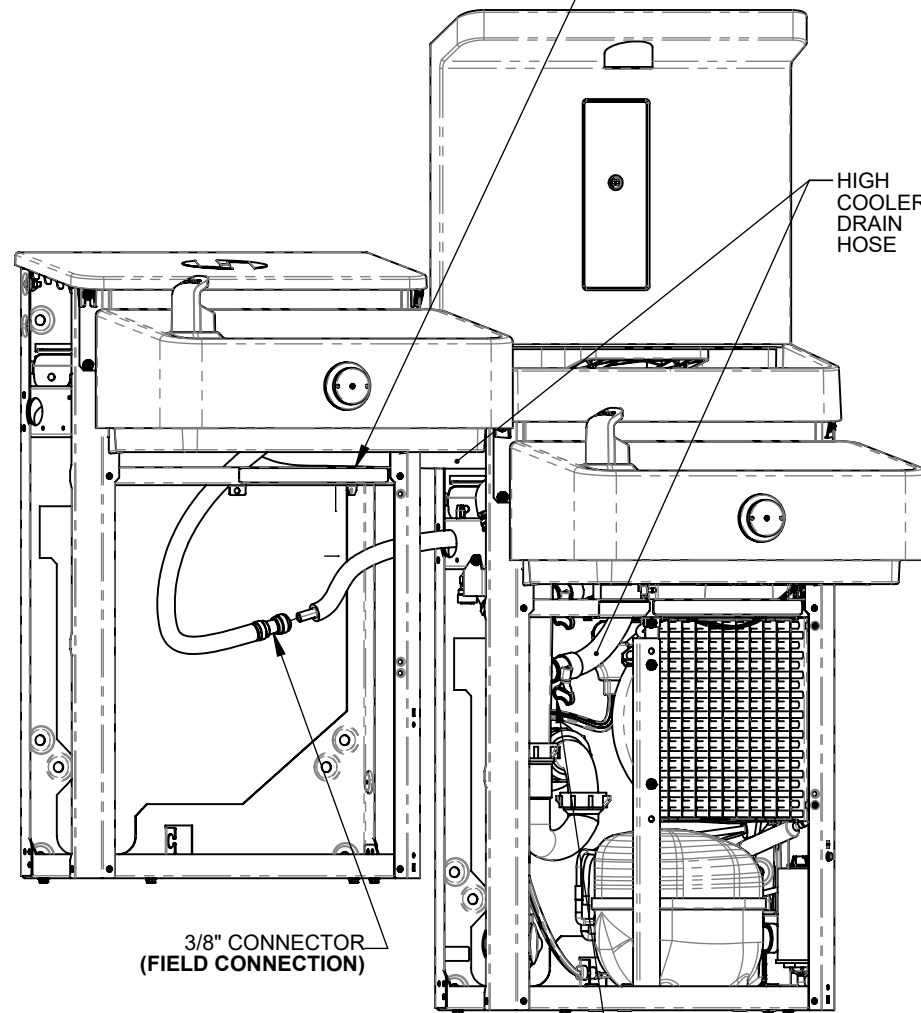
ROUTE TUBING THROUGH
CIRCULAR HOLE IN SHEET METAL

FOAM INSULATION
TUBING & 3/8" TUBING
(SUPPLIED)

3/8" TEE
(FIELD CONNECTION)

HIGH EWC TUBING CONNECTION (ON LOW COOLER) FOR NON-CHILLED MODELS

ROUTE HIGH COOLER
DRAIN HOSE OUT
THE SIDE & ABOVE
THIS BRACKET



3/8" CONNECTOR
(FIELD CONNECTION)

HIGH COOLER FIELD CONNECTIONS

DRAIN TAILPIECE BRANCH
W/ HOSE CLAMP (SUPPLIED)
(FIELD CONNECTION)

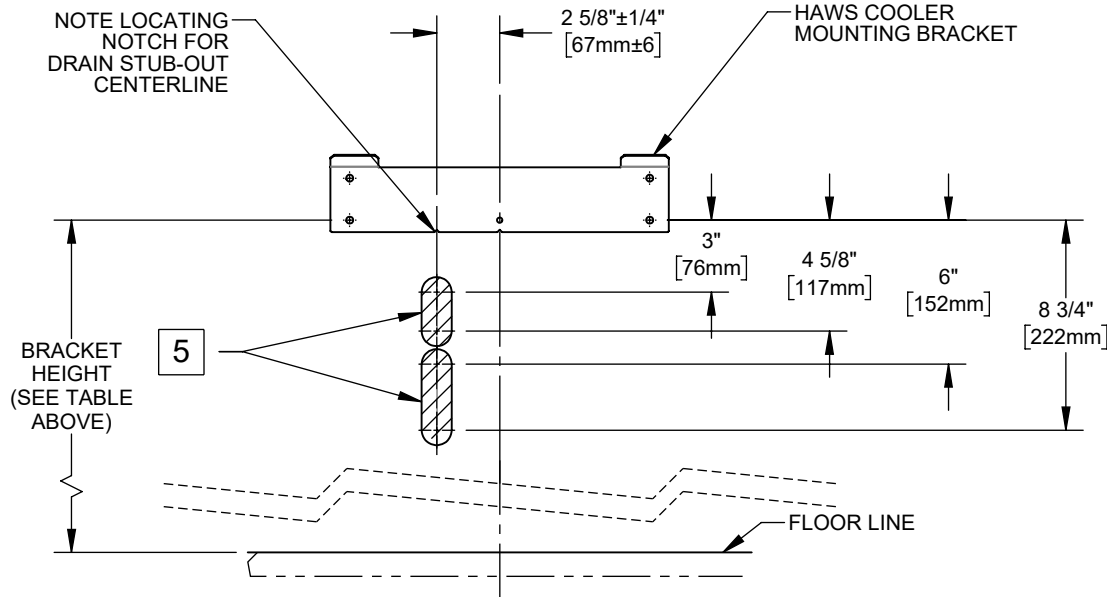


1455 KLEPPE LANE
SPARKS, NEVADA 89431
(775) 359-4712 FAX (775) 359-7424
E-MAIL: HAWS@HAWSO.COM
WEBSITE: WWW.HAWSO.COM

| | | | | |
|-----------------|-------------------|----------------|--|-----------------------------|
| ECN: 6367 | REV. ECN: 6367 | BY: DHP | MODEL(S) 12XXV ELECTRIC WATER COOLERS | PART NUMBER 0510002340.D |
| DRAWN: DHP | DATE: 10/31/25 | CHKD: DHP | | REVISION 1 |
| APPROVED: TM | DATE: 12/18/25 | SCALE: 1:24 | DRAWING TYPE: INSTALLATION | SIZE: A |
| | | | | SHEET 4 OF 7 |

| LOW COOLER BRACKET HEIGHT | | |
|---------------------------|-----------|-----------|
| ADULT STANDING | ADULT ADA | CHILD ADA |
| 33 7/8" | 28 3/8" | 25 3/8" |

RETROFIT INSTALLATION DETAILS

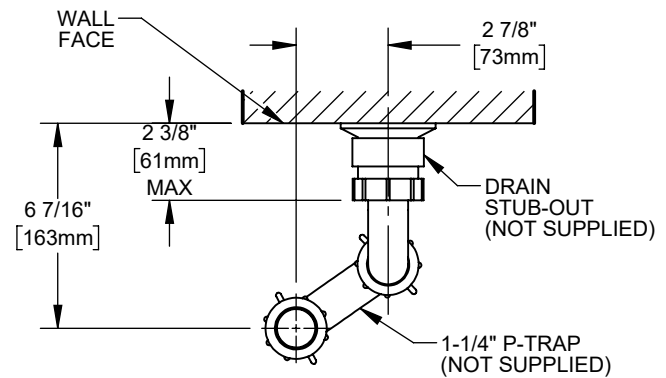


PERMISSIBLE LOCATIONS FOR DRAIN STUB-OUT

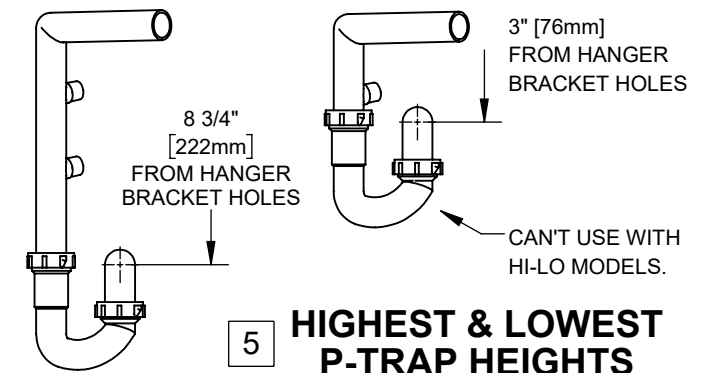
NOTES:

- THE 12XXV COOLER SERIES IS ABLE TO RETROFIT IN PLACE OF A NUMBER OF COMPETITOR MODELS. SEE RETROFIT TABLE ABOVE FOR PARTIAL LIST OF COOLERS ABLE TO BE REPLACED BY THIS ONE.
THE FOLLOWING DISCLAIMERS APPLY:
 - THE 12XXV COOLER CENTERLINE MAY NOT MATCH THE OLD COOLER'S CENTERLINE, SINCE THE 12XXV COOLER DRAIN MUST BE 2 5/8" OFF OF CENTER. THIS MAY AFFECT ADA COMPLIANCE.
 - FOR HI-LO COOLER RETROFITS, EXISTING RIGHT-SIDE COOLER MUST BE THE LOW COOLER. DRAIN, WATER, AND ELECTRIC SERVICES MUST BE POSITIONED BEHIND RIGHT-SIDE UNIT.
 - THERE MUST BE WALL BLOCKING OR OTHER STRUCTURAL MATERIAL BEHIND HAWS MOUNTING HOLES.
 - VERIFY THAT DRAIN, ELECTRIC, & WATER SERVICES ARE LOCATED WITHIN BOUNDARIES SPECIFIED ON THIS SHEET AND THE NEXT. SOME RETROFITS MAY REQUIRE THE ELECTRIC OUTLET TO BE MOVED.
- THE P-TRAP IS NOT SUPPLIED. THE VERTICAL DIMENSIONS GIVEN ARE BASED UPON INSTALLATION USING OF A KEENEY 200W P-TRAP, AND SHOULD THEREFORE BE REGARDED AS REFERENCE-ONLY.
- THE CENTERLINE OF THE DRAIN STUB-OUT MUST BE BETWEEN 3" [76mm] & 4-5/8" [118mm] OR BETWEEN 6" [152mm] & 8-3/4" [229mm] BELOW THE LOWERMOST EWC MOUNTING BRACKET HOLES IN ORDER FOR THE P-TRAP TO AFFIX PROPERLY TO THE DRAIN TAILPIECE.
 - DEPENDING ON STUB-OUT HEIGHT, SOME TRIMMING OF THE TAILPIECE WILL BE REQUIRED.
 - MOUNTING THE STUB-OUT IN THE HIGHER RANGE WILL REQUIRE TRIMMING THE TAILPIECE ABOVE THE LOWER DRAIN HOSE BRANCH. **IN THIS INSTANCE, THEREFORE, A HI-LO COOLER CANNOT BE INSTALLED.**
- WHATEVER P-TRAP AND STUB-OUT PLUMBING ARE USED, CARE SHOULD BE TAKEN TO ENSURE THAT THE P-TRAP CAN SEAL TO THE STUB-OUT PROPERLY AND STILL ALIGN TO THE DRAIN TAILPIECE (LOCATED AT THE GIVEN DIMENSIONS).

| 3 RETROFIT TABLE | |
|---------------------|--|
| MANUFACTURER | MODEL |
| HAWS | ALL MODELS STARTING WITH HWUACP |
| ELKAY/HALSEY TAYLOR | - ALL MODELS STARTING WITH EB, EI, EMA, EN, EZ, HAC HVR, LI, LMA, LZ, TB, & TI - SINGLE COOLER MODELS STARTING WITH VRC & LVR |
| OASIS | ALL VERSACOOLER II MODELS |
| SUNROC | ALL MODELS STARTING WITH ADA A171, A171.8, & A172.8UBL MODELS |
| MURDOCK | NOTE: THE WATER STOP VALVE MUST BE RELOCATED TO RETROFIT A FILTERED 12XX COOLER |



6 DRAIN STUB-OUT/P-TRAP DETAIL (VIEWED FROM TOP)



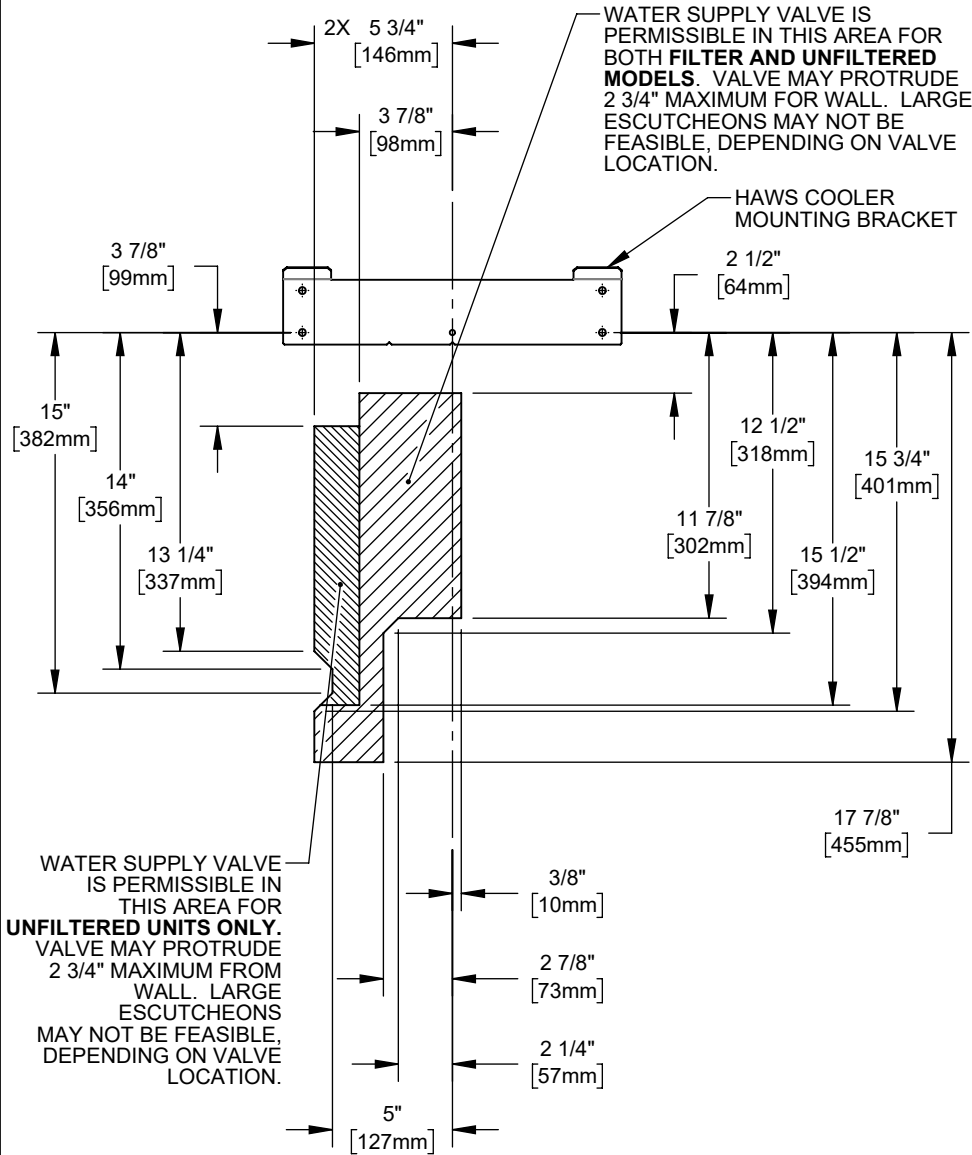
5 HIGHEST & LOWEST P-TRAP HEIGHTS



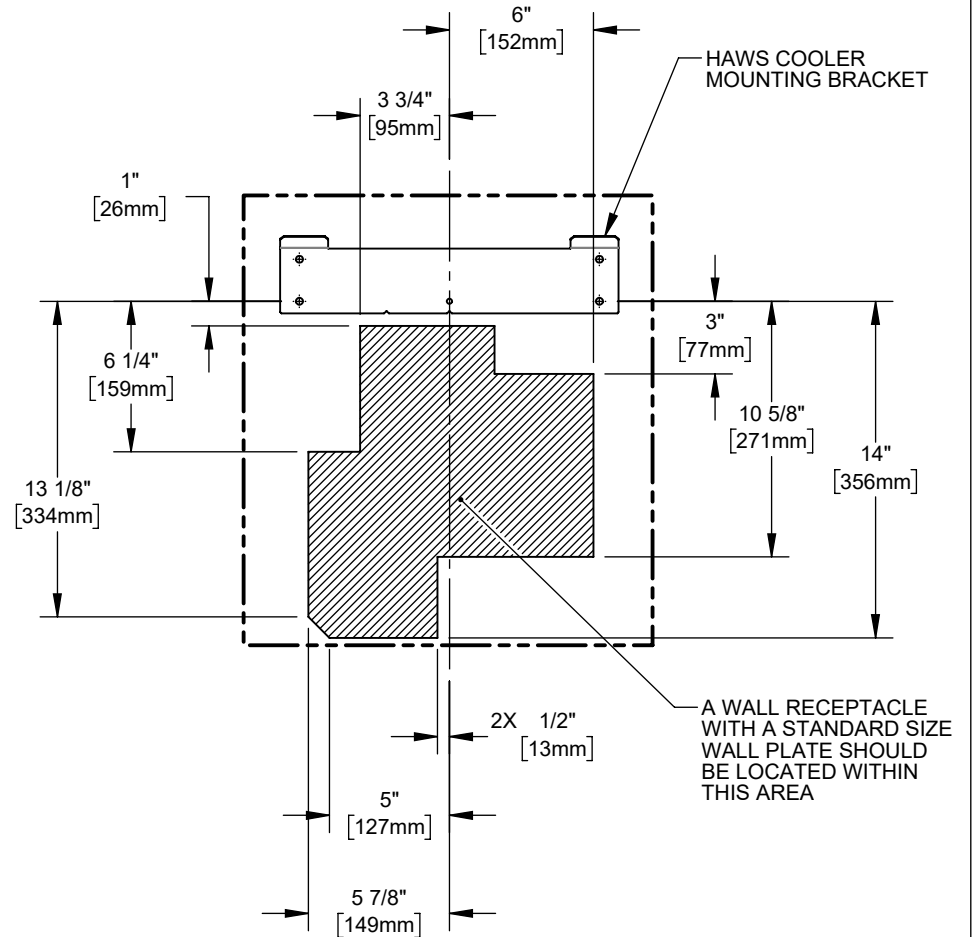
1455 KLEPPE LANE
SPARKS, NEVADA 89431
(775) 359-4712 FAX (775) 359-7424
E-MAIL: HAWS@HAWS.CO.COM
WEBSITE: WWW.HAWS.CO.COM

| | | | | |
|--------------|----------------|------------|--|---------------------------|
| ECN: 6367 | REV. ECN: 6367 | BY: DHP | MODEL(S): 12XXV ELECTRIC WATER COOLERS | PART NUMBER: 0510002340.D |
| DRAWN: DHP | DATE: 10/31/25 | CHKD: DHP | | REVISION: 1 |
| APPROVED: TM | DATE: 12/18/25 | SCALE: 1:8 | DRAWING TYPE: INSTALLATION | SIZE: A SHEET 5 OF 7 |

RETROFIT INSTALLATION DETAILS



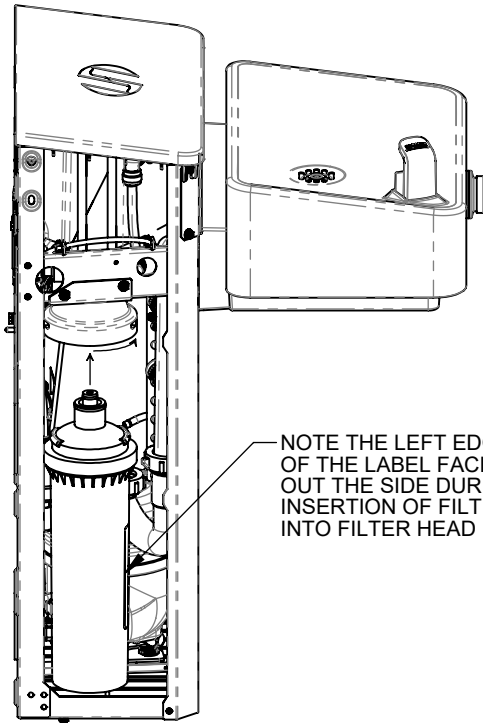
**PERMISSIBLE WATER
SUPPLY LOCATIONS**



**PERMISSIBLE ELECTRICAL
RECEPTACLE LOCATIONS**

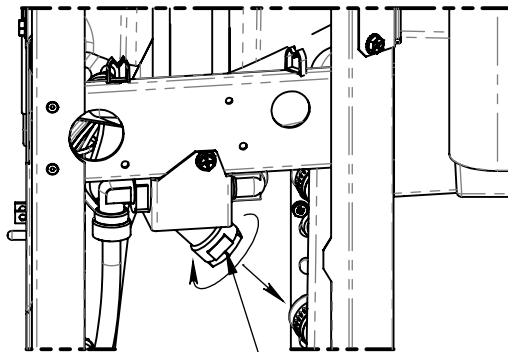
| | | | | | | | |
|--------------|--|----------------|-------------|---------------------------------------|---------|--------------------------|--|
| ECN: 6367 | | REV. ECN: 6367 | BY: DHP | MODEL(S) 12XXV ELECTRIC WATER COOLERS | | PART NUMBER 0510002340.D | |
| DRAWN: DHP | | DATE: 10/31/25 | CHKD: DHP | | | REVISION 1 | |
| APPROVED: TM | | DATE: 12/18/25 | SCALE: 1/8" | DRAWING TYPE: INSTALLATION | SIZE: A | SHEET 6 OF 7 | |

MAINTENANCE



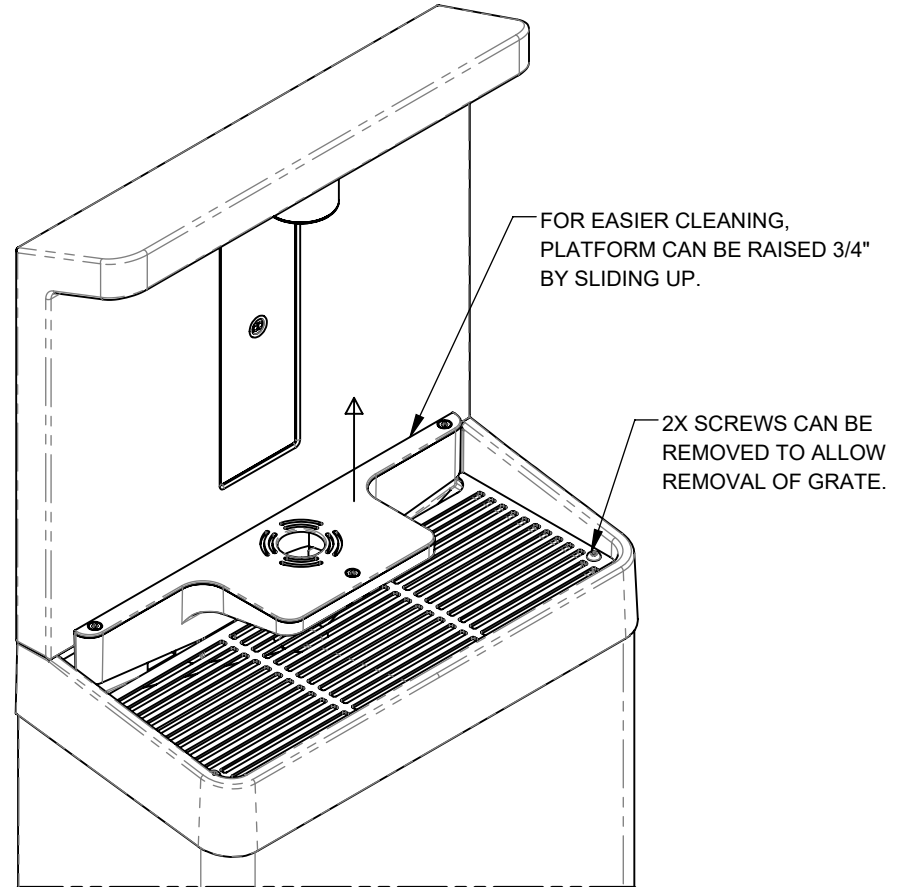
NOTE THE LEFT EDGE OF THE LABEL FACING OUT THE SIDE DURING INSERTION OF FILTER INTO FILTER HEAD

FILTER REPLACEMENT



7/8"
WRENCH
FLATS

Y-STRAINER CLEANING



CLEANING DRAIN BASIN AREA



1455 KLEPPE LANE
SPARKS, NEVADA 89431
(775) 359-4712 FAX (775) 359-7424
E-MAIL: HAWS@HAWS.CO.COM
WEBSITE: WWW.HAWS.CO.COM

| | | | | |
|-----------------|-------------------|---------------|--|-----------------------------|
| ECN: 6367 | REV. ECN: 6367 | BY: DHP | MODEL(S) 12XXV ELECTRIC WATER COOLERS | PART NUMBER 0510002340.D |
| DRAWN: DHP | DATE: 10/31/25 | CHKD: DHP | | REVISION 1 |
| APPROVED: TM | DATE: 12/18/25 | SCALE: 1:8 | DRAWING TYPE: INSTALLATION | SIZE: A |
| | | | | SHEET 7 OF 7 |