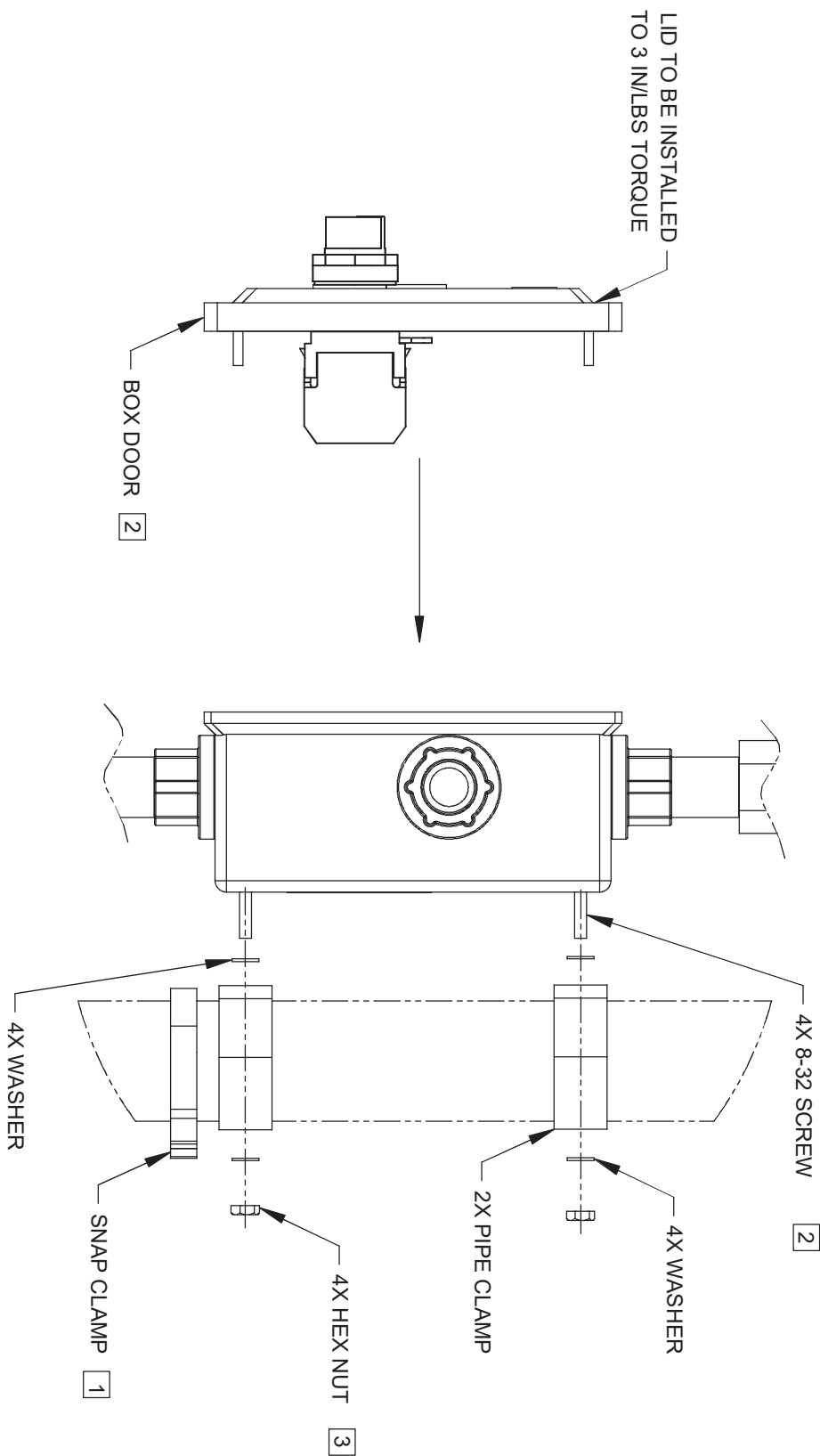



NOTES:

- 1 SNAP CLAMP TO BE INSTALLED FIRST FOR VERTICAL SUPPORT.
- 2 SCREWS INSTALLED FROM FRONT, WITH BOX DOOR OFF.
- 3 NUTS TO BE INSTALLED TO A TORQUE OF 12 IN-LBS MAX.



CLAMP ASSEMBLY DETAIL

		Haws ®		1455 KLEPPE LANE SPARKS, NEVADA 89431 (775) 359-4712 FAX (755) 359-7424 E-MAIL: HAWS@HAWS.CO.COM WEBSITE: WWW.HAWS.CO.COM	
ECN NO.	REVISED PER BY:	MODEL(S)		9001/9001.5 ALARM	
DRAWN:	ECN 4938	WVC			
CHKD:	DATE:	CHKD:			
APPROVED:	DATE:				
F.V.	01/08/15	SCALE:	1/8	DRAWING TYPE:	INSTALLATION
		SIZE:	A	SHEET:	2 OF 2
		PART NUMBER 0002080202.D			
		DRAWING NO. 09254A00			
		REV 27			