

FEATURES & BENEFITS

CONSTRUCTION

Featuring a water-resistant and UV-resistant vinyl outer shell, the heat shield is built with four layers of heat protection for reliable thermal insulation in demanding environments.

SOLAR PERFORMANCE

Reflects up to 60% of solar radiation providing an R Value of 3.45.

HEAT TRANSFER

Reduces conductive heat transfer by up to 98%.

INSTALLATION

Easily fitted on the Haws 7501 Portable Eyewash with Velcro, no tools required.



OPTIONS

- 9083 - HAWSCLEAN™ Portable Eyewash Cleansing Stick
- 9082 - Bacteriostatic Water Preservative
- 7501 - Portable Eyewash

For more information, visit www.hawesco.com or call (888) 640-4297.

SPECIFICATIONS

The Portable Eyewash Heat Shield is designed to keep water at safe temperatures in warm environments, preventing overheating and ensuring reliable emergency eye protection. Compatible with the Haws 7501 Portable Eyewash, this advanced thermal barrier reduces conductive heat transfer by up to 98% and reflects up to 60% of solar radiation—three times more than an uncovered unit. Built with four premium quality layers of heat protection, including waterproof and UV-resistant vinyl fabric, foam insulation, thermal bubble layers, and high-density polyethylene, it delivers superior durability and performance for workplace safety.

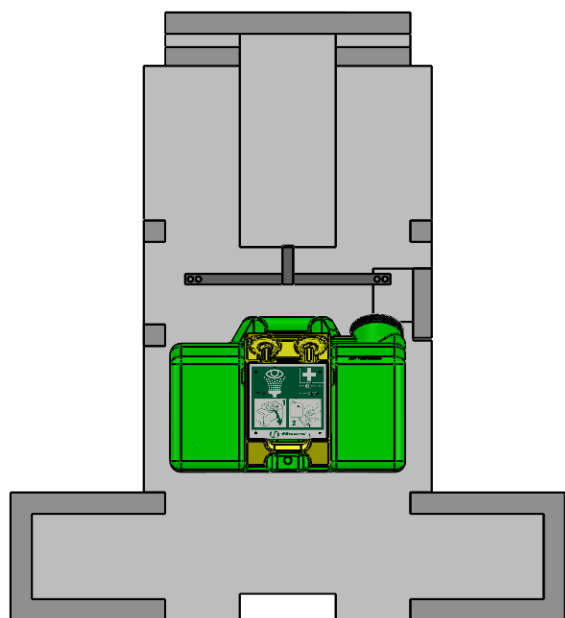
APPLICATIONS

Ideal for use in outdoor job sites, industrial facilities, construction zones, and remote locations, the Portable Eyewash Heat Shield provides essential protection for emergency eyewash stations exposed to direct sunlight and high ambient temperatures. By maintaining water within safe temperature ranges, it helps safety managers ensure compliance with ANSI Z358.1 requirements and safeguard employee well-being in hot environments. Perfect for industries such as oil and gas, utilities, agriculture, and manufacturing, this heat shield is a practical, easy-to-install solution that extends the readiness and reliability of portable eyewash units where fixed plumbed systems aren't feasible.

WARNING: EVEN WITH THE THERMAL JACKET IN PLACE, MANY FACTORS CAN ULTIMATELY AFFECT THE WATER TEMPERATURE WITHIN THE EYEWASH. AS SUCH, HAWS CANNOT GUARANTEE THAT THE THERMAL JACKET WILL PROVIDE A TEPID EYEWASH WATER TEMPERATURE. IT IS THE CUSTOMER'S RESPONSIBILITY TO ENSURE THAT THE WATER STORED WITHIN THE EYEWASH DOES NOT GET DANGEROUSLY HOT OR COLD. HAWS RECOMMENDS TEMPERATURE VERIFICATION OF THE EYEWASH WATER ACROSS THE RANGE OF EXPECTED ENVIRONMENTAL CONDITIONS, AND ADJUSTMENT OF THE EYEWASH INSTALLATION, IF NEEDED, TO FURTHER ENSURE AN ACCEPTABLE EYEWASH WATER TEMPERATURE.

NOTES:

1. AFTER INSTALLATION, CHECK EYEWASH FUNCTION TO ENSURE THAT THE UNIT IS STILL IN COMPLIANCE WITH THE REQUIREMENTS OF PERTINENT CODES AND STANDARDS (E.G., DIMENSIONS, ACTIVATION, FLOW CHARACTERISTICS, ETC.).



STEP 1

UNPACK THE JACKET AND LAY FLAT WITH INNER SURFACE (SILVER) UP.

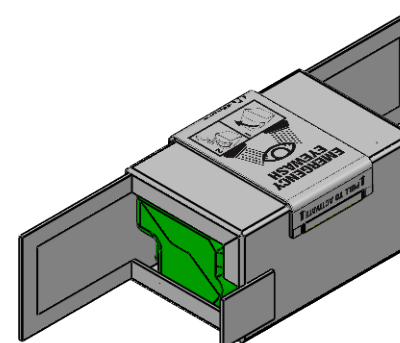
STEP 2

SET THE 7501 TANK BOTTOM DOWN ON THE JACKET IN THE ORIENTATION SHOWN.



STEP 3

WRAP THE JACKET UP AND OVER THE 7501 TANK AND ATTACH THE BOTTOM VELCRO CLOSURES.



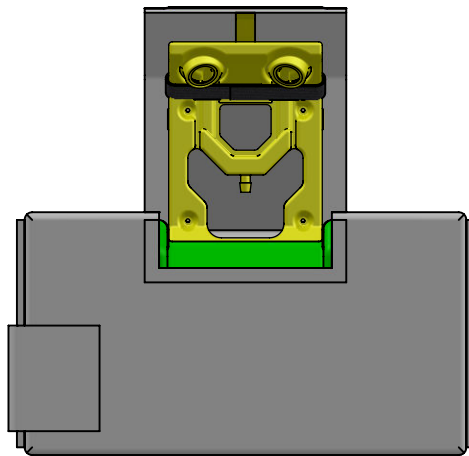
STEP 4

SET THE 7501 TANK AND JACKET UPRIGHT. FOLD THE FLAPS OVER THE SIDES OF THE TANK USING THE VELCRO TO ATTACH THE EDGES TOGETHER.

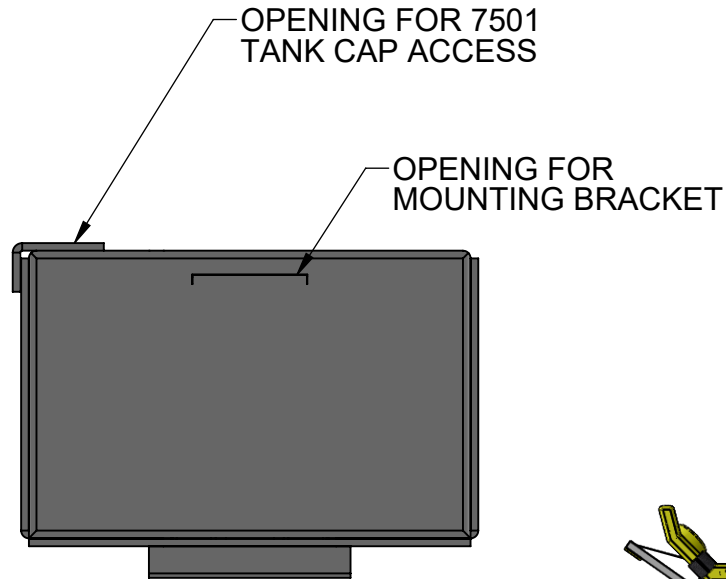


1455 KLEPPE LANE
SPARKS, NEVADA 89431
(775) 359-4712 FAX (775) 359-7424
E-MAIL: HAWS@HAWSO.COM
WEBSITE: WWW.HAWSO.COM

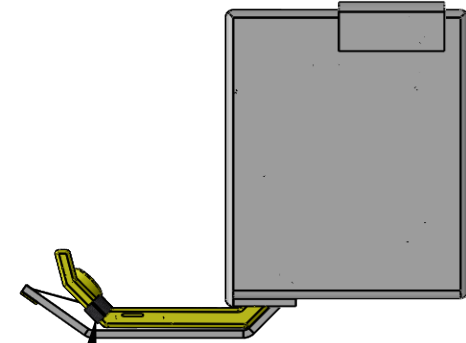
ECN: 6175	REV. ECN: 6222	BY: JG	MODEL(S)	9126	PART NUMBER 0510002282
DRAWN: JG	DATE: 01/06/25	CHKD: JU			REVISION 2
APPROVED: JL	DATE: 03/04/25	SCALE: 1:18	DRAWING TYPE: INSTALLATION	SIZE: A	SHEET 1 OF 2



TOP VIEW



BACK VIEW



SIDE VIEW

STEP 5

PULL DOWN/OPEN THE EYEWASH FLAP AND THE YELLOW EYEWASH ARM ATTACH THE WEBBING LOOP AROUND THE EYEWASH ARM BELOW THE EYEWASH HEADS.

STEP 6

MOUNT THE ASSEMBLED EYEWASH AND JACKET IN ACCORDANCE WITH 7501/7501T INSTALLATION INSTRUCTIONS.



1455 KLEPPE LANE
SPARKS, NEVADA 89431
(775) 359-4712 FAX (775) 359-7424
E-MAIL: HAWS@HAWSO.COM
WEBSITE: WWW.HAWSO.COM

ECN: 6175	REV. ECN: 6222	BY: JG	MODEL(S)	PART NUMBER
DRAWN: JG	DATE: 01/06/25	CHKD: JU	9126	0510002282
APPROVED: JL	DATE: 03/04/25	SCALE: 1:10	DRAWING TYPE: INSTALLATION	REVISION 2
SIZE: A				SHEET 2 OF 2