

FEATURES & BENEFITS

CONSTRUCTION

One-piece stamped basin made of 14 gauge Type 304 stainless steel with a satin finish that resists stains and corrosion, with soft, rounded corners. Unit has an integral 1/4" (.6 cm) stainless steel mounting plate, vandal-resistant bottom plate, and 1-1/4" NPT trap.

BUBBLER HEAD

Polished chrome-plated brass bubbler head with integral 11/16" dia. basin shank and stainless anti-rotation roll pin for vandal resistance strength. Shielded, angled stream opening provides a steady, sanitary source of drinking water at .45 gpm.

FOUNTAIN VALVE

The push-button activated valve offers the only all stainless steel valve body that is machined out of solid bar stock, is fully serviceable through the front of the push button assembly offering access to the water control cartridge and integral water supply strainer, and with front access to the water stream height adjustment for easy maintenance without having to remove the valve. Operating pressure range of 30 to 90 psi (2.1 to 6.2 bar).

VANDAL RESISTANT

The bubbler head, push button, drain strainer and bottom plate are locked in place, discouraging unwanted vandal tampering.

INTEGRATED TRAP

All cast brass 1-1/4" NPT adjustable trap completely concealed inside bottom plate for easy installation and access.



SPECIFICATIONS

Model 1109.14B is a wall mounted vandal-resistant, barrier-free drinking fountain with 14 gauge Type 304 Stainless Steel with satin finish, vandal-resistant push-button operated stainless steel valve with front accessible cartridge, in-line strainer and flow adjustment, 100% lead-free waterways, polished chrome-plated brass bubbler head and waste strainer, integral 1/4" (.6 cm) thick stainless steel mounting plate, vandal-resistant stainless bottom plate and 1-1/4" NPT concealed all cast-brass trap. In extreme environments related to heat and cold, product(s) must be protected from damage/exposure due to these extreme conditions.

OPTIONS

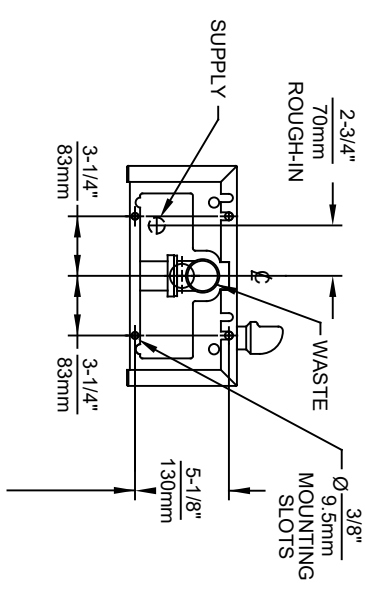
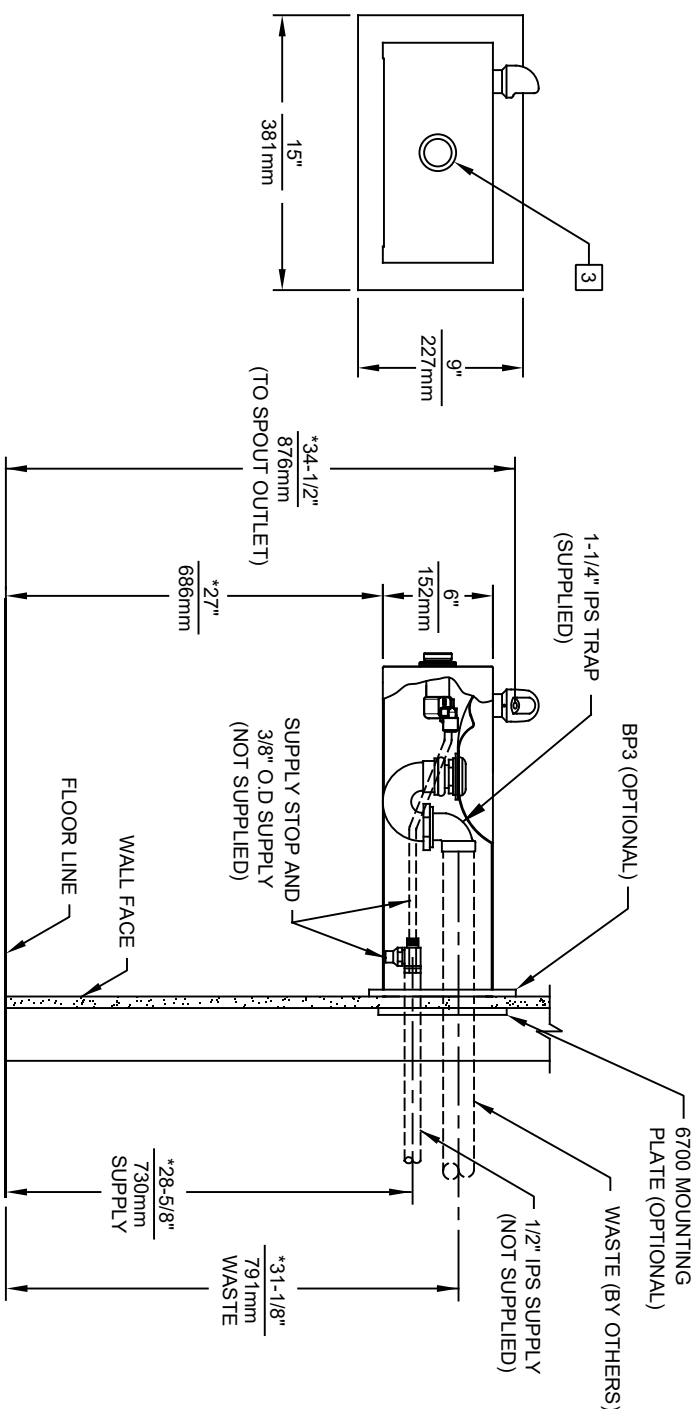
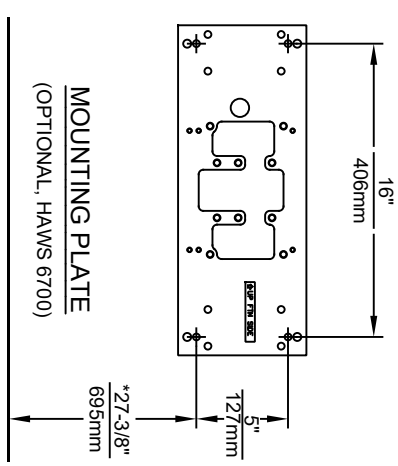
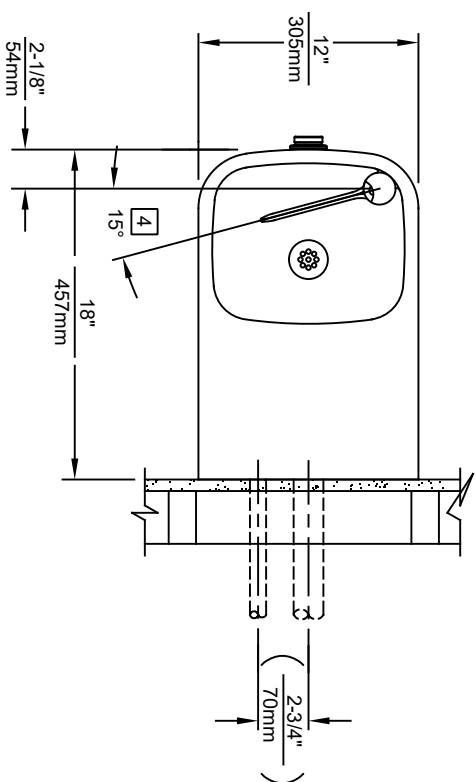
- Water Filter: Model 6480 filter kit with 3000 gallon carbon block filter, filter head, and mounting bracket.
- Bottle Filler: Model 1920, bottle filler can be a stand-alone station, or mounted above Haws 1109 series drinking fountain models.
- Remote Drinking Fountain Water chiller: Model HCR8, 8 gph (30.3 L) remote water chiller provides instantaneous cooling to meet a continuous demand for chilled water.
- Support Frame: Model 6800 In-wall floor mounted fixture support legs, welded steel 4-bolt floor flanges, and supplied with 'U' bolts and hardware.
- Mounting Plate: Model 6700 universal mounting plate for most wall mounted fountains.

For more information, visit www.hawscow.com or call (888) 640-4297.

APPLICATIONS

Perfect for either public or private indoor/outdoor settings, Model 1109.14B is a great fit in areas where aesthetics are important to the overall appeal of the architecture. Suitable in areas where extra durability is needed. Beautiful satin finish helps to maintain the fountains overall appeal. Specifically, this type of wall mounted drinking fountain may be placed in settings such as: schools and other locations in and around office buildings where the temperature remains above freezing. Model meets all current Federal Regulations for the disabled including those in the Americans with Disabilities Act. Haws manufactures drinking fountains, faucets and electric water coolers to be lead-free by all known definitions including NSF/ANSI/CAN 61-Section 9, NSF/ANSI/CAN 372, California Proposition 65, and the Federal Safe Drinking Water Act. Product is compliant to California Health and Safety Code 116875 (AB 1953-2006), and 116876 (AB 100) "NSF/ANSI/CAN 61: Q ≤ 1".







NOTES:

1. HOLD ROUGH-IN DIMENSIONS $\pm 1/4"$ (6.4mm).
2. WHEN INSTALLING THIS UNIT, LOCAL, STATE OR FEDERAL CODES SHOULD BE ADHERED TO. FOR INSTALLATION HEIGHTS OTHER THAN SHOWN, DIMENSIONS MARKED (*) MUST BE ADJUSTED ACCORDINGLY.
3. REFER TO 5874 SERIES/VRK5874 OPERATION AND MAINTENANCE MANUAL FOR PUSH BUTTON AND VALVE INSTALLATION AND MAINTENANCE INSTRUCTIONS.
4. MAXIMUM ADJUSTABLE RANGE IS 15° FROM PARALLEL TO BACK OF WALL.

ECN NO. REVISED PERBY:		MODEL(S)	
DRAWN:	DATE:	CHKD:	
F. VASQUEZ	06/08	B.M.	
APPROVED:	DATE:	SCALE:	DRAWING TYPE:
FV	11/1/22	NA	INSTALLATION
SIZE: A		SHEET: 1 OF 1	
REVISION:		17	



1456 KLEPPE LANE
SPARKS, NEVADA 89431
(775) 359-4712 FAX (775) 359-7424
E-MAIL: HAWS@HAWS.CO.COM
WEBSITE: WWW.HAWS.CO.COM

ECN NO. REVISED PERBY:

MODEL(S)


1109.14

PART NUMBER

0002076625.D

6700 INDEX

INSTALLATION WITH:	TYPICAL USES	SEE SHEET ...
GENERAL INSTALLATION	IMPORTANT INFORMATION FOR ALL INSTALLATIONS	3 OF 6
1001 BOWLS	HAWS SERIES 1001X, 1001.8X	3 OF 6
1107 BOWLS	HAWS SERIES 1107X, 1107.8X	3 OF 6
1109 BOWLS	HAWS SERIES 1109X, 1109.8X	3 OF 6
1047 BOWLS	HAWS SERIES 1047	4 OF 6
1011 BOWLS	HAWS SERIES 1011X, 1011.8X	4 OF 6
1119 BOWLS	HAWS SERIES 1119X, 1119.8X	4 OF 6
1117 BOWLS	HAWS SERIES 1117X, 1117.8X	5 OF 6
1311 BOWLS	HAWS SERIES 1311	5 OF 6
1501 BOWLS	HAWS SERIES 1501	5 OF 6
CHILD HEIGHT	HAWS 1107PCH, 1109PCH, 1311PCH	6 OF 6



Haws

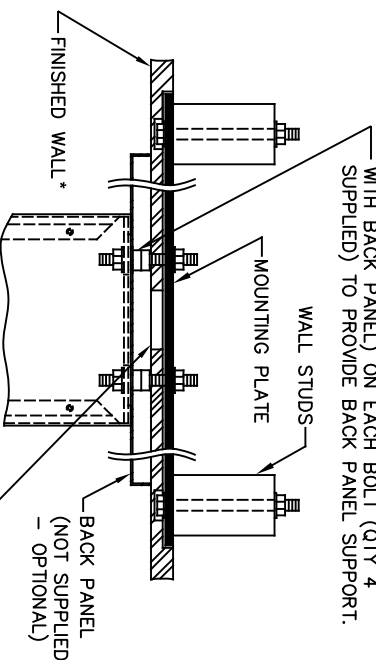
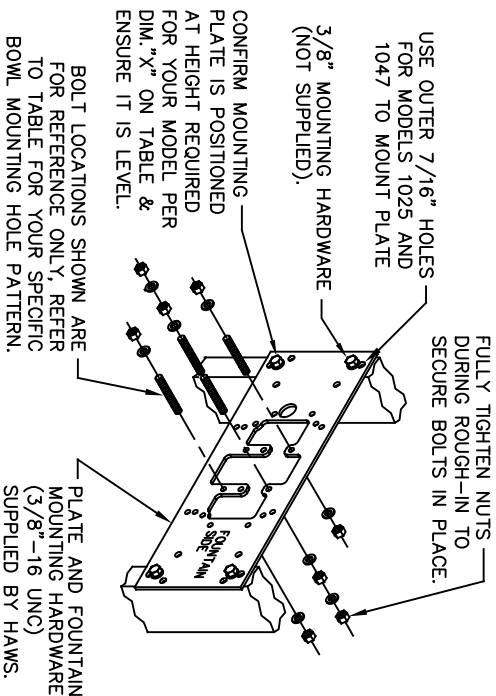
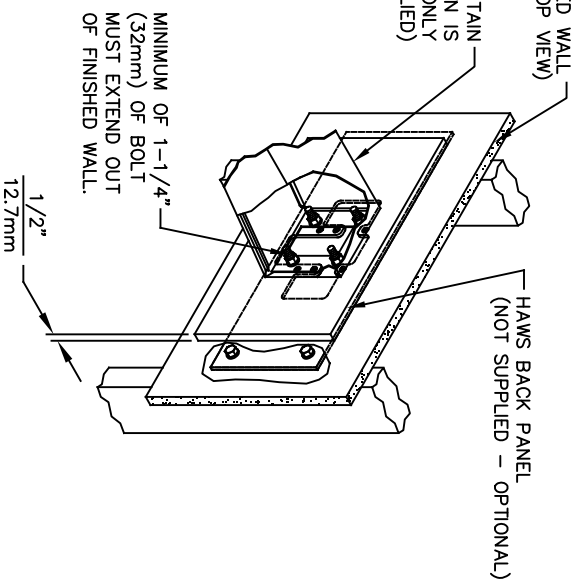
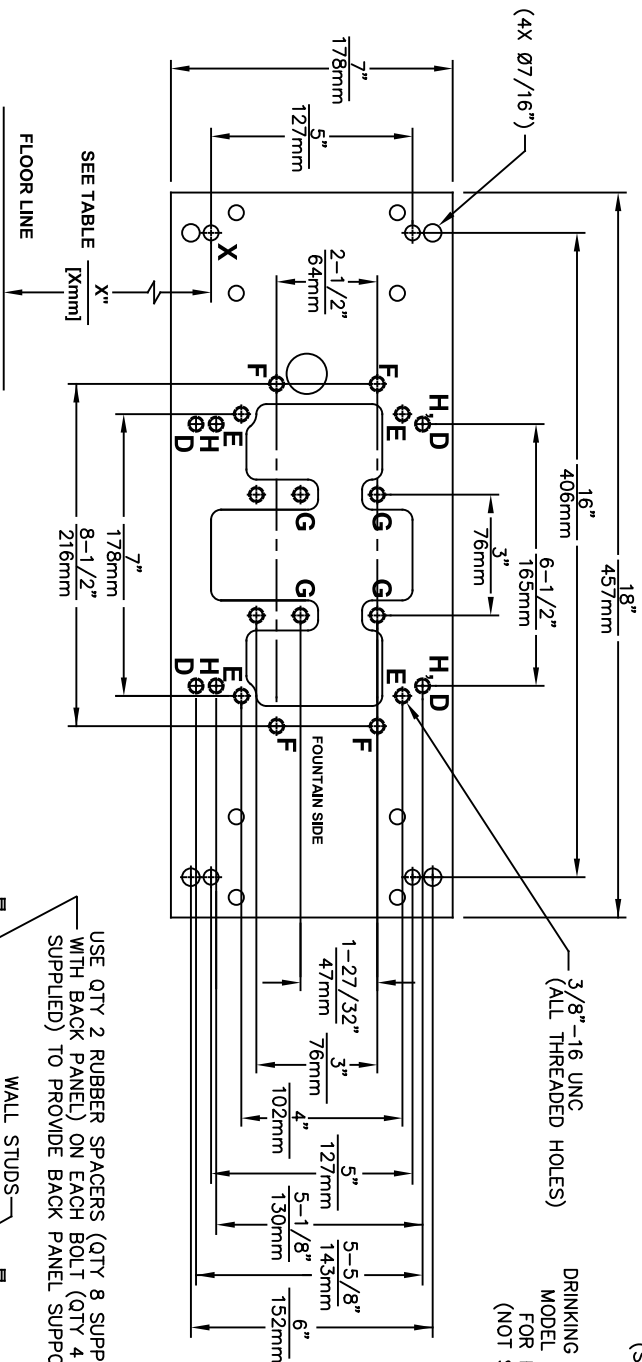
Since 1906

1455 KLEPPE LANE
SPARKS, NEVADA 89431
(775) 359-4712 FAX (775) 359-7424
E-MAIL: HAWS@HAWSCO.COM
WEBSITE: WWW.HAWSCO.COM

ECN NO. REVISED PER BY: JG
DRAWN: JG
DATE: 10/03/24
APPROVED: FV

MODEL(S)
67/00

PART NUMBER
0002080016
REVISION
26



DRINKING FOUNTAIN (ONLY) AT 27" ADULT HEIGHT (SEE SPECIFIC MODEL O&M'S FOR OTHER HEIGHTS)			
MODEL	USE BOWL MTG. HOLE PATTERN	USE "X" DIM. BELOW TO POSITION MOUNTING PLATE HOLE "X"	
1001	"G"	25-3/8" [645mm]	
1025	"D"	28-1/8" [714mm]	
1047	"E"	24-3/8" [619mm]	
1105	"H"	34-5/16" [872mm]	
1107	"F"	26-3/16" [665mm]	
1109	"H"	27-5/16" [694mm]	
1109.14	"H"	27-5/16" [694mm]	
1109FR	"H"	27-5/16" [694mm]	
1311	"E"	26-3/4" [679mm]	
WASTE DRIP TRAY (ONLY) AT 27" ADULT HEIGHT			
6468	"G"	25-3/8" [645mm]	
1922	"G"	25-3/8" [645mm]	

TOP VIEW

6700 MOUNTING PLATE

FOR USE WITH

DRINKING FOUNTAINS

AND WASTE DRIP TRAYS

AT 27" ADULT HEIGHT

(SEE SHEETS 2 - 5 FOR USE WITH


BOTTLE FILLER 1920/1920HO SERIES

AND CHILD HEIGHT APPLICATIONS)

****FINISH WALL OVER MOUNTING PLATE AND BEHIND BACK PANEL. MAKE SURE THAT FINISHED WALL EXTENDS WITHIN THE BRACKET/BOWL MOUNTING HOLES (TO PROVIDE SURFACE AREA FOR RUBBER SPACERS TO CONTACT).**

CAUTION

REGARDING CONCRETE/MASONRY WALL MOUNTING: DO NOT SECURE MOUNTING PLATE TO SAME SIDE OF WALL AS FOUNTAIN. AVOID COMPROMISING INTEGRITY OF WALL WHEN ANCHORING FOUNTAIN. IT IS RECOMMENDED THAT INSTALLER CALL TECHNICAL SUPPORT IF THERE ARE ANY QUESTIONS AS TO HOW TO OBTAIN A PROPER ANCHOR IN CONCRETE/MASONRY WALLS. 1-800-766-5612



Haws®
Since 1906

ECN NO. REVISED PERBY: 6700

DRAWN: 6700

CAL: 6700

APPROVED: 6700

DATE: 02/11/25

SCALE: N/A

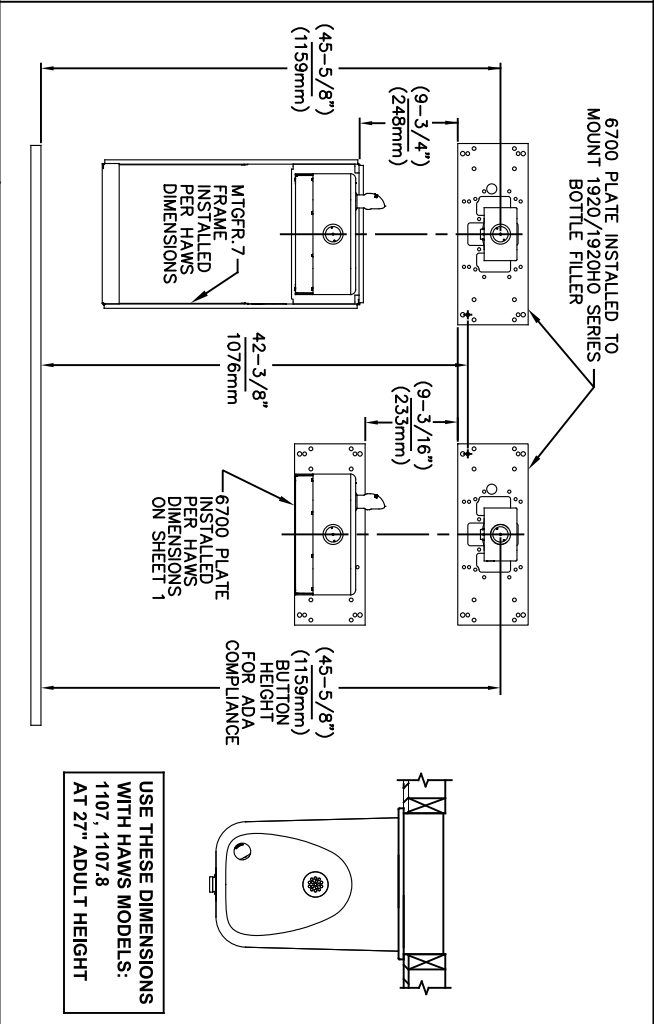
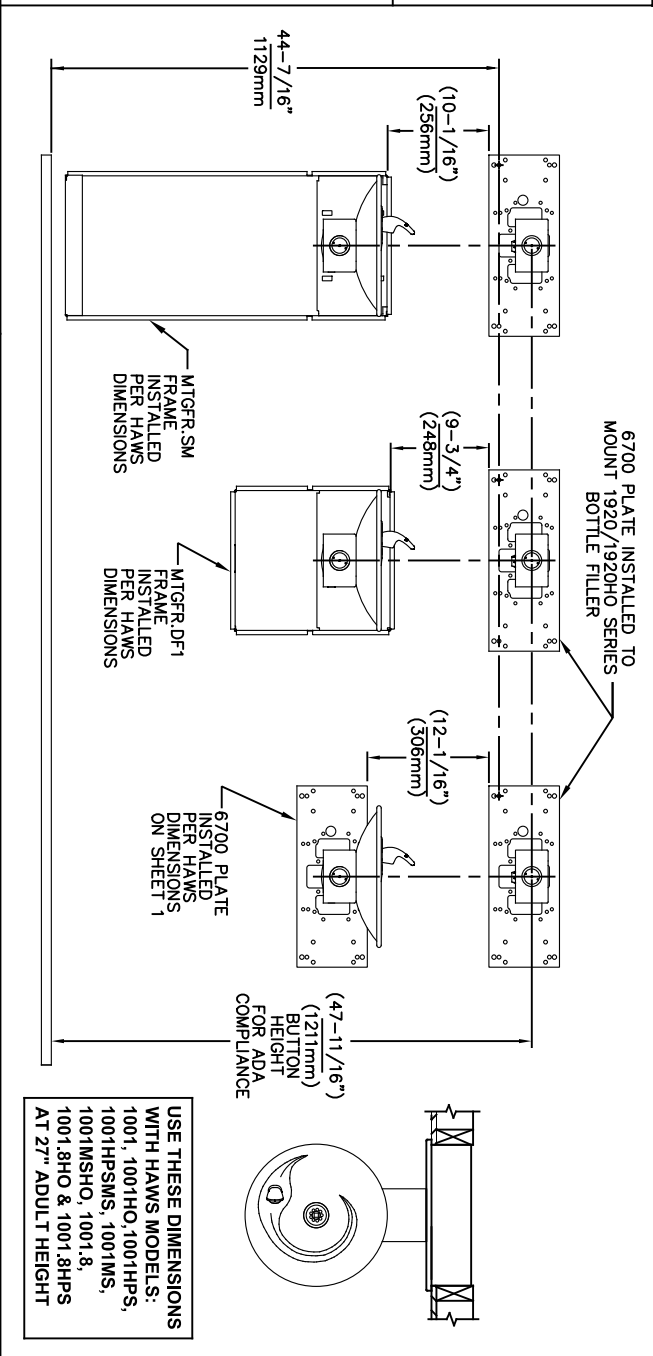
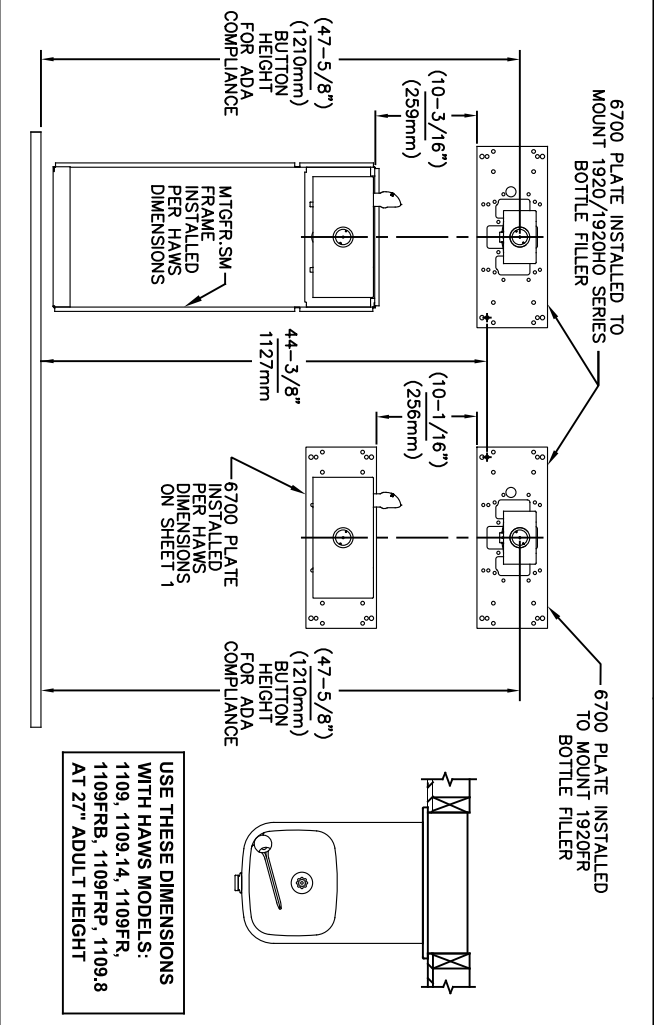
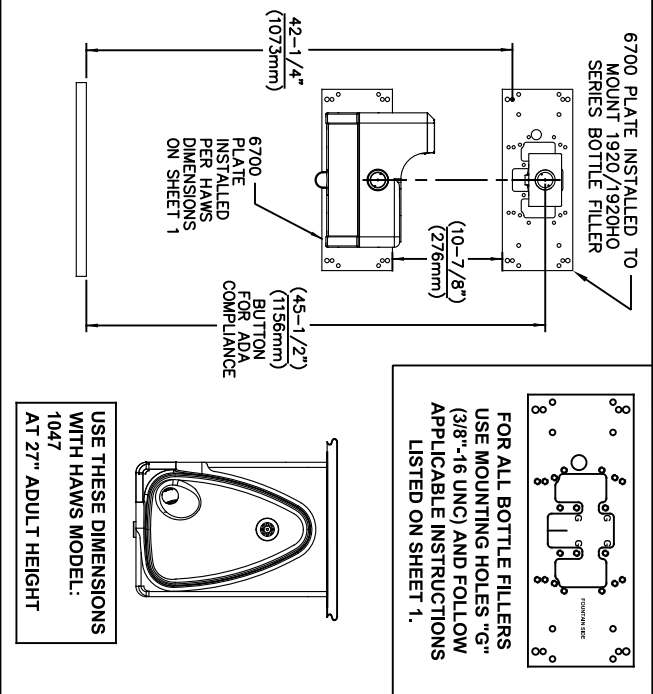
DRAWING TYPE: INSTALLATION

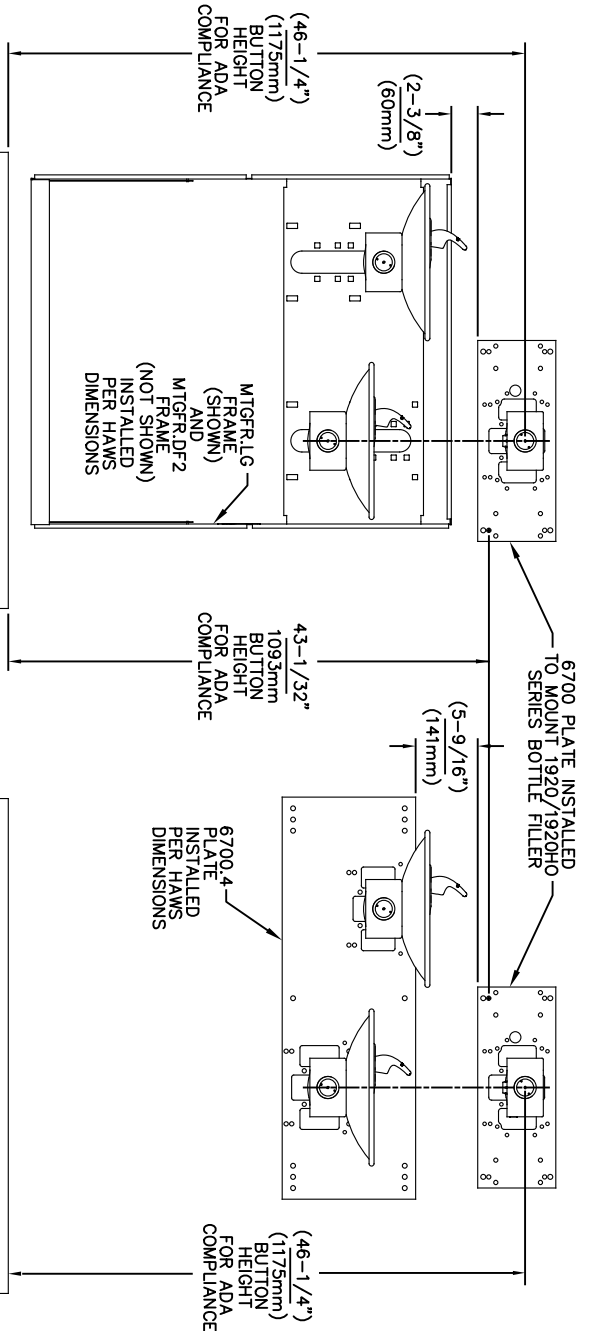
SIZE: A

SHEET: 2 OF 6

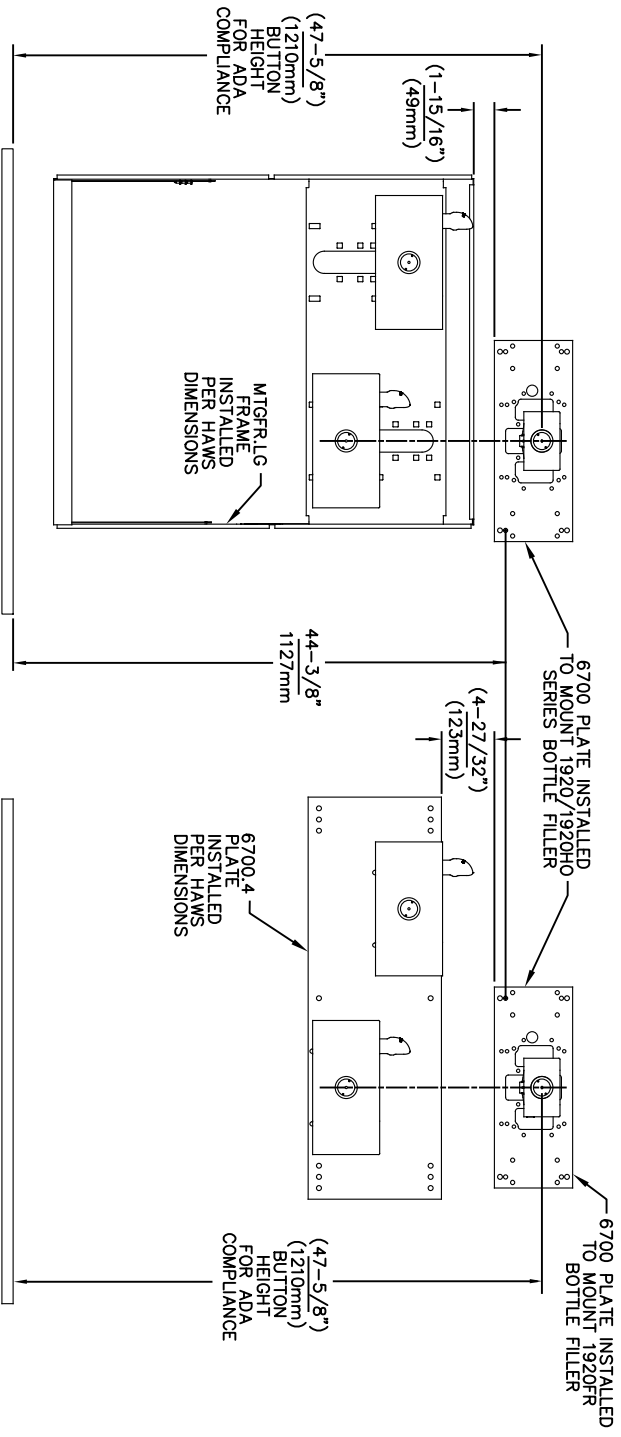
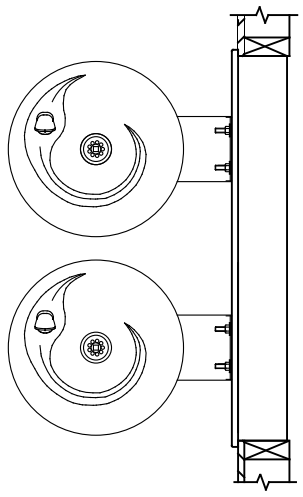
1455 KLEPPE LANE
SPARKS, NEVADA 89431
(775) 359-4712 FAX (775) 359-7424
E-MAIL: HAWS@HAWS.CO.COM
WEBSITE: WWW.HAWS.CO.COM

PART NUMBER
0002080016

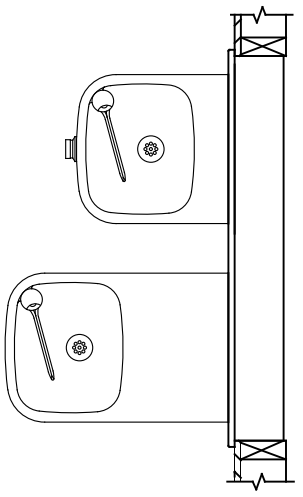




USE THESE MOUNTING DIMENSIONS IF INSTALLING OVER HAWS FOUNTAIN
MODEL: 1011, 1011HO, 1011HO2, 1011HPS, 1011HPSHO, 1011HPSHO2, 1011HPSMS, 1011HMS, 1011MSHO, 1011MSHO2, 1011.8, 1011.8HO, 1011.8HO2 & 1011.8HPSM AT 27" ADULT HEIGHT
INSTALL THE 6700 ABOVE THE FOUNTAIN MOUNTING PLATE OR FRAME AT THE DIMENSION SHOWN FOR CORRECT BACKPANEL SPACING
BACK PANELS FOR BOTTLE FILLERS (NOT SUPPLIED - OPTIONAL) ARE NOT SHOWN FOR CLARITY.




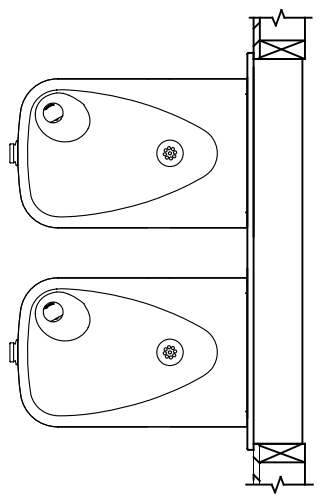
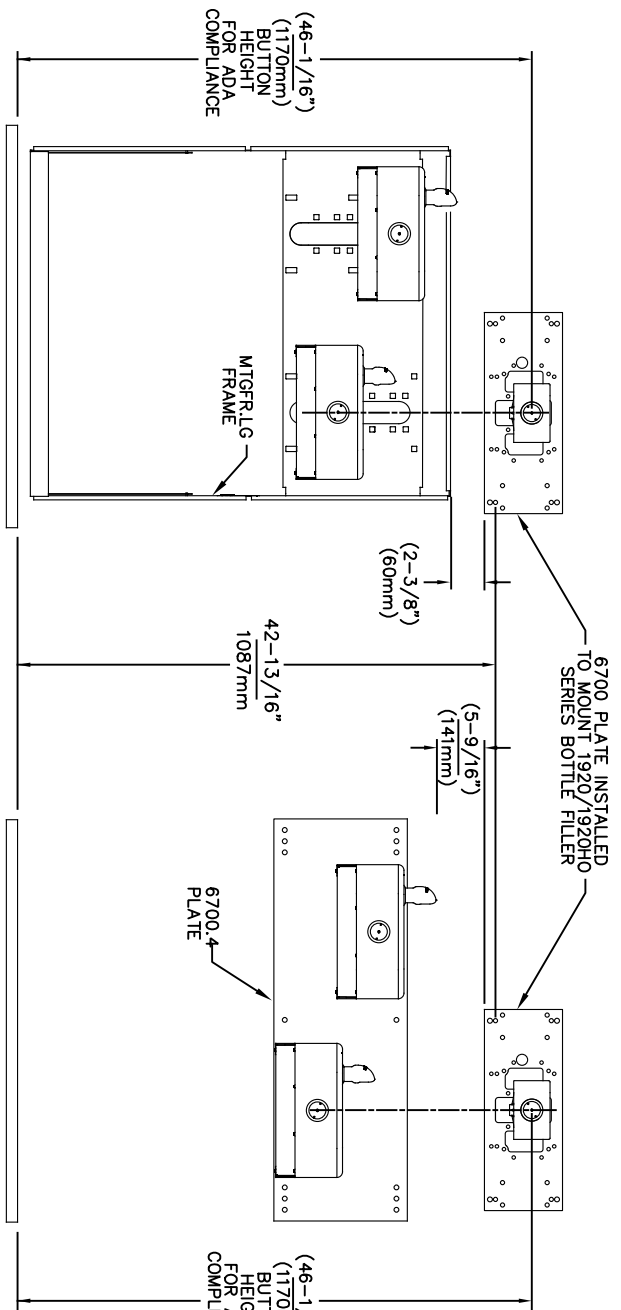
USE THESE MOUNTING DIMENSIONS IF INSTALLING OVER HAWS FOUNTAIN
MODEL: 1119, 1119.14, 1119.14HO, 1119.14HO2, 1119FR, 1119FRB, 1119FRP, 1119HO, 1119HO2 & 1119.8 AT 27" ADULT HEIGHT
INSTALL THE 6700 ABOVE THE FOUNTAIN MOUNTING PLATE OR FRAME AT THE DIMENSION SHOWN FOR CORRECT BACKPANEL SPACING
BACK PANELS FOR BOTTLE FILLERS (NOT SUPPLIED - OPTIONAL) ARE NOT SHOWN FOR CLARITY.



- NOTES:
1. WHEN INSTALLING THIS UNIT, LOCAL, STATE OR FEDERAL CODES SHOULD BE ADHERED TO.
 2. BACK PANELS (OPTIONAL) NOT SHOWN FOR CLARITY.

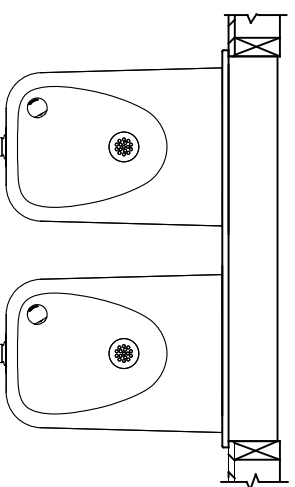
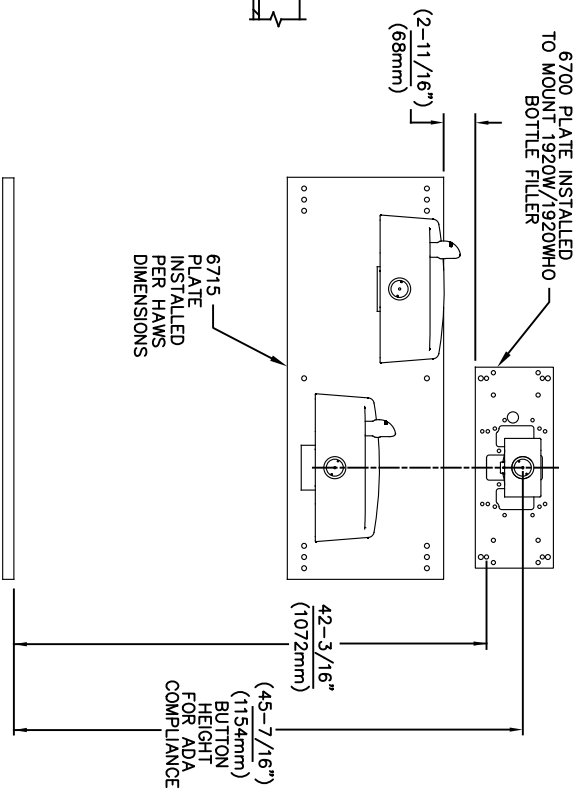
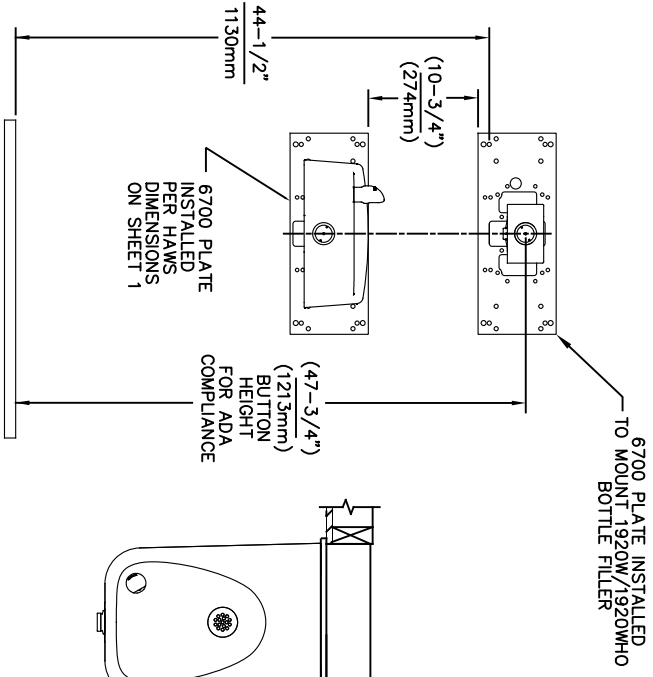
6700 MOUNTING PLATE
FOR USE WITH BOTTLE FILLER
(SEE SHEET 1 FOR USE WITH
DRINKING FOUNTAINS)

		1456 KLEPPE LANE SPARKS, NEVADA 89431 (775) 359-4712 FAX (775) 359-7424 E-MAIL: HAWS@HAWS.CO.COM WEBSITE: WWW.HAWS.CO.COM	
ECN NO. REVISED PERBY:	MODEL(S)	6700	
5550 ECN 6148 JG	DATE: 09/14/20 JG	PART NUMBER 0002080016	
DRAWN: FV	DATE: 02/11/25	REVISION: 26	
APPROVED: FV	SCALE: 1:13	DRAWING TYPE: INSTALLATION	
SIZE: A		SHEET 4 OF 6	



USE THESE MOUNTING DIMENSIONS IF
INSTALLING OVER HAWS FOUNTAIN
MODEL: 1117, 1117.8
AT 27" ADULT HEIGHT

INSTALL THE 6700 ABOVE THE
FOUNTAIN MOUNTING PLATE OR
FRAME AT THE DIMENSION SHOWN
FOR CORRECT BACKPANEL SPACING
BACK PANELS FOR BOTTLE FILLERS
(NOT SUPPLIED - OPTIONAL) ARE NOT
SHOWN FOR CLARITY.




USE THESE MOUNTING DIMENSIONS IF
INSTALLING OVER HAWS FOUNTAIN
MODEL: 1311, 1501
AT 27" ADULT HEIGHT

INSTALL THE 6700 ABOVE THE
FOUNTAIN MOUNTING PLATE AT
THE DIMENSION SHOWN FOR CORRECT
BACKPANEL SPACING (IF APPLICABLE).
BACK PANEL FOR BOTTLE FILLER
(NOT SUPPLIED - OPTIONAL) IS NOT
SHOWN FOR CLARITY.

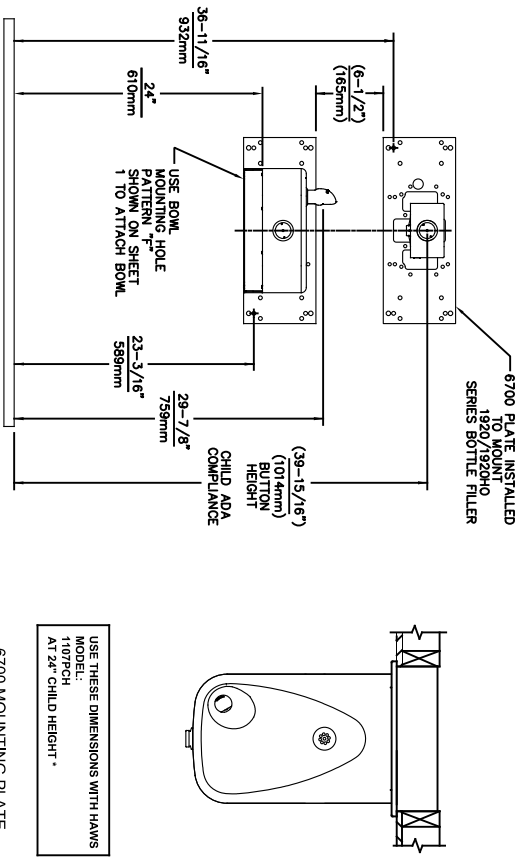
- NOTES:
1. WHEN INSTALLING THIS UNIT, LOCAL, STATE OR FEDERAL CODES SHOULD BE ADHERED TO.
 2. BACK PANELS (OPTIONAL) NOT SHOWN FOR CLARITY.

6700 MOUNTING PLATE
FOR USE WITH BOTTLE FILLER
(SEE SHEET 1 FOR USE WITH
DRINKING FOUNTAINS)

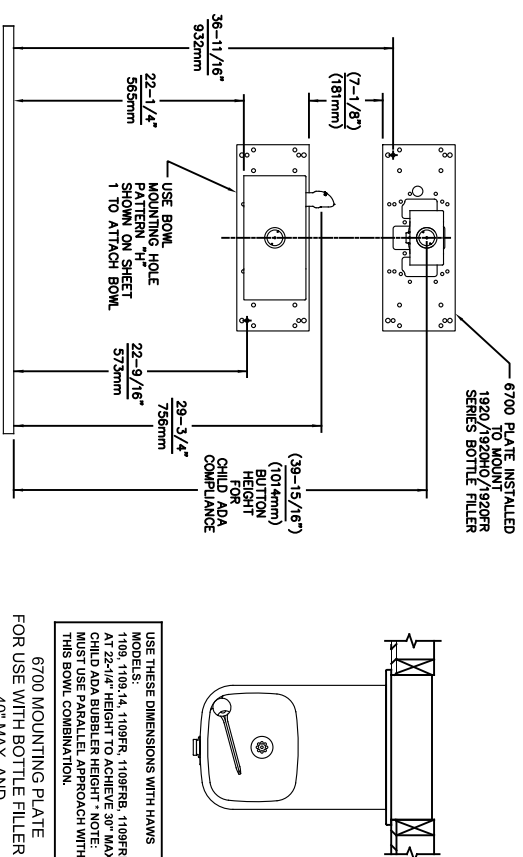


Since 1906

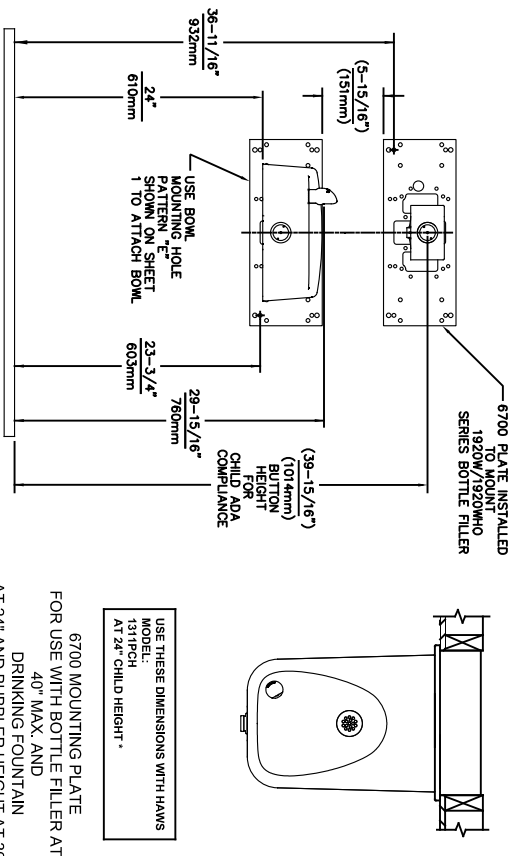
ECN NO.	REVISED PERBY:	MODEL(S)
5550	ECN: 6148 JG	
DRAWN:	DATE:	CHKD:
FV	05/14/20	JG
APPROVED:	DATE:	
FV	02/11/25	
SCALE:	1:13	DRAWING TYPE:
INSTALLATION		SHEET 5 OF 6
1456 KLEPPE LANE SPARKS, NEVADA 89431 (775) 359-4712 FAX (775) 359-7424 E-MAIL: HAWS@HAWS.CO.COM WEBSITE: WWW.HAWS.CO.COM		
PART NUMBER 0002080016		
REVISION 26		



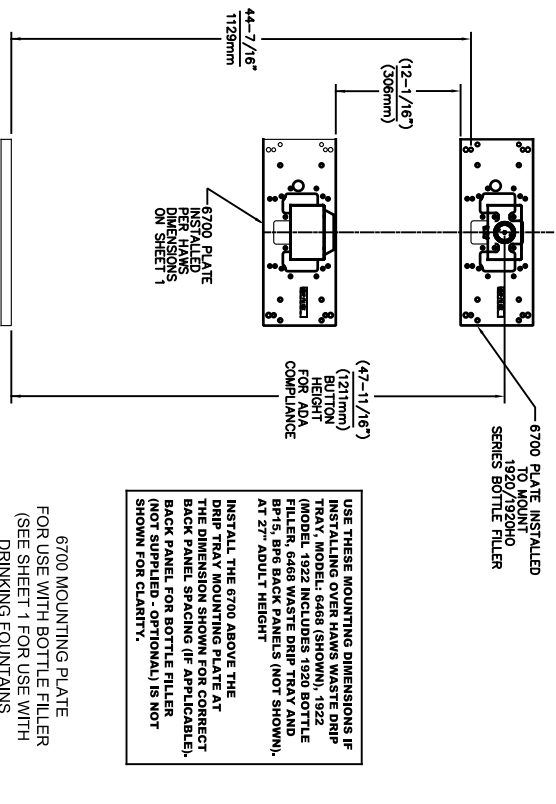
6700 MOUNTING PLATE
FOR USE WITH BOTTLE FILLER AT
40\" MAX. AND
DRINKING FOUNTAIN
AT 24\" AND BUBBLER HEIGHT AT 30\"
MAX. FOR CHILD ADA HEIGHT
(SEE SHEETS 1 & 2 FOR USE WITH
DRINKING FOUNTAIN AT 27\" ADULT
HEIGHT DIMENSIONS)



6700 MOUNTING PLATE
FOR USE WITH BOTTLE FILLER AT
40\" MAX. AND
DRINKING FOUNTAIN
BUBBLER HEIGHT AT 30\" MAX.
FOR CHILD ADA HEIGHT
MUST USE PARALLEL APPROACH
WITH THIS BOWL COMBINATION
(SEE SHEETS 1 & 2 FOR USE WITH
DRINKING FOUNTAIN AT 27\" ADULT
HEIGHT DIMENSIONS)



6700 MOUNTING PLATE
FOR USE WITH BOTTLE FILLER AT
40\" MAX. AND
DRINKING FOUNTAIN
AT 24\" AND BUBBLER HEIGHT AT 30\"
MAX. FOR CHILD ADA HEIGHT
(SEE SHEETS 1 & 4 FOR USE WITH
DRINKING FOUNTAIN AT 27\" ADULT
HEIGHT DIMENSIONS)



6700 MOUNTING PLATE
FOR USE WITH BOTTLE FILLER
(SEE SHEET 1 FOR USE WITH
DRINKING FOUNTAINS
AND WASTE DRIP TRAY)



1456 KLEPPE LANE
SPARKS, NEVADA 89431
(775) 359-4712 FAX (775) 359-7424
E-MAIL: HAWS@HAWS.CO.COM
WEBSITE: WWW.HAWS.CO.COM

ECN NO. REVISED PERBY:	MODEL(S)
5893 1 ECN: 6148 1 JG	6700
DRAWN: DATE: CHKD:	
FV 07/26/23 JG	
APPROVED: DATE:	
FV 02/11/25	
SCALE: 1:13	DRAWING TYPE:
INSTALLATION	SHEET 6 OF 6