

## FEATURES & BENEFITS

### CONSTRUCTION

One-piece drinking fountain with low-profile design made of 14 gauge Type 304 stainless steel with 1/4" (.6 cm) thick stainless back plate welded in, and vandal-resistant stainless bottom plate. Satin finish resists stains and corrosion.

### ACCESS

Low profile designed bowl and integral trap allow for knee clearance for adult or child ADA access (when installed at appropriate heights).

### BUBBLER HEAD

Polished chrome-plated brass bubbler head with integral 11/16" dia. basin shank and stainless anti-rotation roll pin for vandal resistance strength. Shielded, angled stream opening provides a steady, sanitary source of drinking water at .45 gpm.

### DRINKING FOUNTAIN VALVE

The push-button activated valve offers the only all stainless steel valve body that is machined out of solid bar stock, is fully serviceable through the front of the push button assembly offering access to the water control cartridge and integral water supply strainer, and with front access to the water stream height adjustment for easy maintenance without having to remove the valve. Operating pressure range of 30 to 90 psi (2.1 to 6.2 bar).

### INTEGRATED TRAP

All cast brass 1-1/4" NPT adjustable trap completely concealed inside bottom plate for easy installation and access.

## OPTIONS

- Water Filter: Model 6480 filter kit with 3000 gallon carbon block filter, filter head, and mounting bracket.
- Back Panel: Model BP7 decorative 15" x 9" (38 x 23 cm) satin stainless steel panel.
- Bottle Filler Stand: Model BTL1107, add-on stainless steel stand to place bottle on when 1920 bottle filler is used.
- Support Frame: Model 6800 In-wall floor mounted fixture support legs, welded steel 4-bolt floor flanges, and supplied with 'U' bolts and hardware.

For more information, visit [www.hawscow.com](http://www.hawscow.com) or call (888) 640-4297.



## SPECIFICATIONS

Model 1107B wall mounted vandal-resistant, barrier-free drinking fountain shall include a 14 gauge Type 304 Stainless Steel satin finish basin with integral 1/4" (.6 cm) thick stainless steel back plate, 3/16" (.47 cm) thick steel in-wall mounting plate, push-button operated stainless steel valve with front-accessible cartridge, in-line strainer and flow adjustment provides 100% lead free waterways, polished chrome-plated brass vandal-resistant bubbler head, polished chrome-plated brass vandal-resistant waste strainer, stainless steel satin finish back panel, vandal-resistant stainless bottom plate, and a 1-1/4" NPT concealed all cast-brass trap. Unit can be mounted to meet ADA or Child ADA specifications. In extreme environments related to heat and cold, product(s) must be protected from damage/exposure due to these extreme conditions.

## APPLICATIONS

Perfect for either public or private indoor/outdoor settings, the 1107B is a great fit in areas where aesthetics are important to the overall appeal of the architecture. Beautiful satin finish helps to maintain the fountains overall appeal. Specifically, this type of wall mounted drinking fountain may be placed in settings such as: schools and other locations in and around office buildings where the temperature remains above freezing. Model meets all current Federal Regulations for the disabled including those in the Americans with Disabilities Act. Haws manufactures drinking fountains, faucets and electric water coolers to be lead-free by all known definitions including NSF/ANSI/CAN 61-Section 9, NSF/ANSI/CAN 372, California Proposition 65, and the Federal Safe Drinking Water Act. Product is compliant to California Health and Safety Code 116875 (AB 1953-2006), and 116876 (AB 100) "NSF/ANSI/CAN 61: Q ≤ 1".



NOTES:

1. HOLD ROUGH-IN DIMENSIONS  $\pm 1/4"$  (6.4mm)
2. WHEN INSTALLING THIS UNIT, LOCAL, STATE OR FEDERAL CODES SHOULD BE ADHERED TO. FOR INSTALLATION HEIGHTS OTHER THAN SHOWN, DIMENSIONS MARKED (\*) MUST BE ADJUSTED ACCORDINGLY.
3. REFER TO 5874 SERIES OPERATION AND MAINTENANCE MANUAL FOR PUSH BUTTON AND VALVE INSTALLATION AND MAINTENANCE INSTRUCTIONS.

4. ROUGH IN DIMENSIONS FOR FOUNTAIN HEIGHTS:

CHILD WHEELCHAIR HEIGHT: SEE SHT. 2 FIG. 1

WASTE: 26-1/4" (667mm)

SUPPLY: 26-1/8" (664mm)

\*\* FOUNTAIN (ONLY) HOLE: 24-13/16" (630mm)

\*\*\* MOUNTING PLATE HOLE: 23-3/16" (589mm)

FOUNTAIN: 24" (610mm)

BUBBLER: 29-7/8" (756mm)

ADULT WHEELCHAIR HEIGHT: SEE SHT. 2 FIG. 2

WASTE: 29-1/4" (743mm)

SUPPLY: 29-1/8" (740mm)

\*\* FOUNTAIN (ONLY) HOLE: 27-13/16" (706mm)

\*\*\* MOUNTING PLATE HOLE: 26-3/16" (665mm)

FOUNTAIN: 27" (686mm)

BUBBLER: 32-7/8" (832mm)

STANDING ADULT HEIGHT: SEE SHT. 2 FIG. 3

WASTE: 34-3/4" (883mm)

SUPPLY: 34-5/8" (879mm)

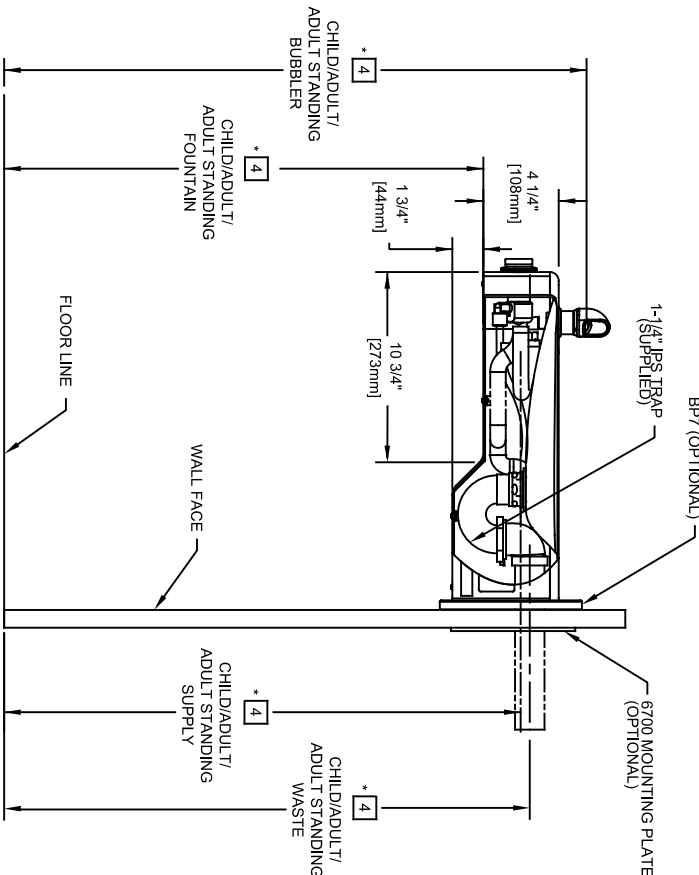
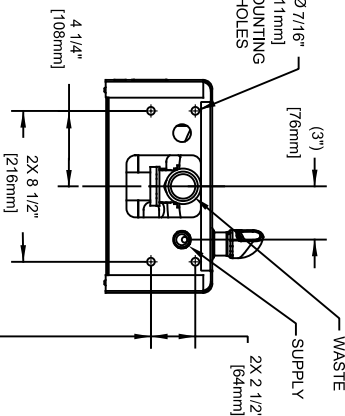
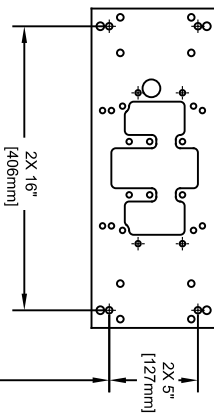
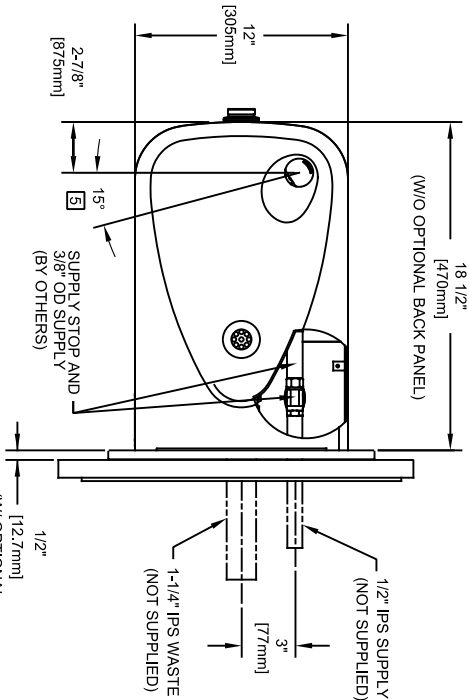
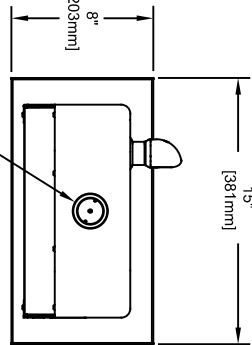
\*\* FOUNTAIN (ONLY) HOLE: 33-5/16" (846mm)

\*\*\* MOUNTING PLATE HOLE: 31-11/16" (805mm)

FOUNTAIN: 32-1/2" (826mm)

BUBBLER: 38-3/8" (972mm)

5. MAXIMUM ADJUSTABLE RANGE IS 15" FROM PARALLEL TO BACK WALL.



1455 KLEPPLE LANE  
SPARKS, NEVADA 89431  
(775) 359-4712 FAX (775) 359-7424  
E-MAIL: HAWS@HAWS.CO.COM  
WEBSITE: WWW.HAWS.CO.COM


|                      |                |            |                            |              |
|----------------------|----------------|------------|----------------------------|--------------|
| ECN NO. REUSED PERBY | MODEL(S)       | 1107       | PART NUMBER                | 0002080232 D |
| DRAWN: ECN 6148 J.G. | DATE: CHD      |            | REVISION                   | 18           |
| C.FENNER 102506 J.G. | DATE:          |            |                            |              |
| APPROVED: FV         | DATE: 02/11/25 | SCALE: 1:1 | DRAWING TYPE: INSTALLATION | SHEET 1 OF 1 |

\*\*\* MOUNTING PLATE HOLE  
LOCATION DETAIL  
(FOR OPTIONAL HAWS 6700)

\*\* FOUNTAIN (ONLY) HOLE  
LOCATION DETAIL  
(FOR USE WITHOUT OPTIONAL  
MOUNTING PLATE MODEL 6700)  
BACK VIEW

6700 INDEX

| INSTALLATION WITH:   | TYPICAL USES                                | SEE SHEET ... |
|----------------------|---|---------------|
| GENERAL INSTALLATION | IMPORTANT INFORMATION FOR ALL INSTALLATIONS | 3 OF 6        |
| 1001 BOWLS           | HAWS SERIES 1001X, 1001.8X                  | 3 OF 6        |
| 1107 BOWLS           | HAWS SERIES 1107X, 1107.8X                  | 3 OF 6        |
| 1109 BOWLS           | HAWS SERIES 1109X, 1109.8X                  | 3 OF 6        |
| 1047 BOWLS           | HAWS SERIES 1047                            | 4 OF 6        |
| 1011 BOWLS           | HAWS SERIES 1011X, 1011.8X                  | 4 OF 6        |
| 1119 BOWLS           | HAWS SERIES 1119X, 1119.8X                  | 4 OF 6        |
| 1117 BOWLS           | HAWS SERIES 1117X, 1117.8X                  | 5 OF 6        |
| 1311 BOWLS           | HAWS SERIES 1311                            | 5 OF 6        |
| 1501 BOWLS           | HAWS SERIES 1501                            | 5 OF 6        |
| CHILD HEIGHT         | HAWS 1107PCH, 1109PCH, 1311PCH              | 6 OF 6        |



Haws

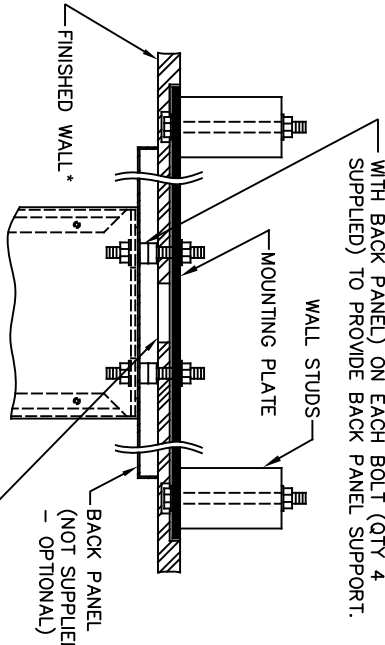
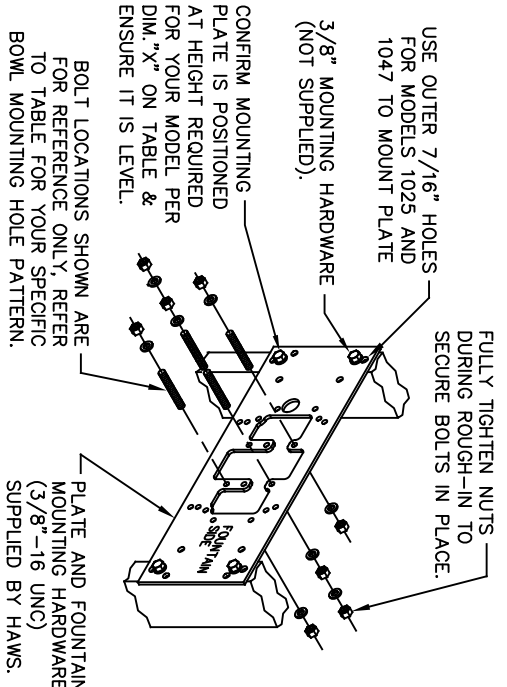
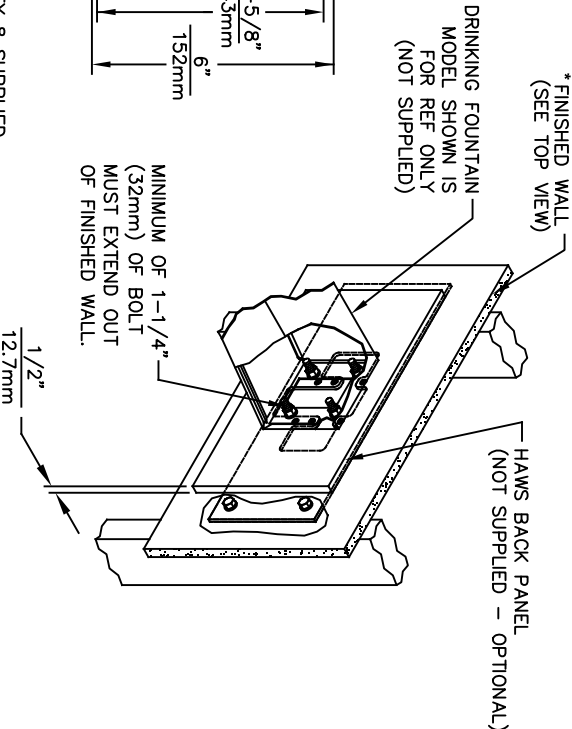
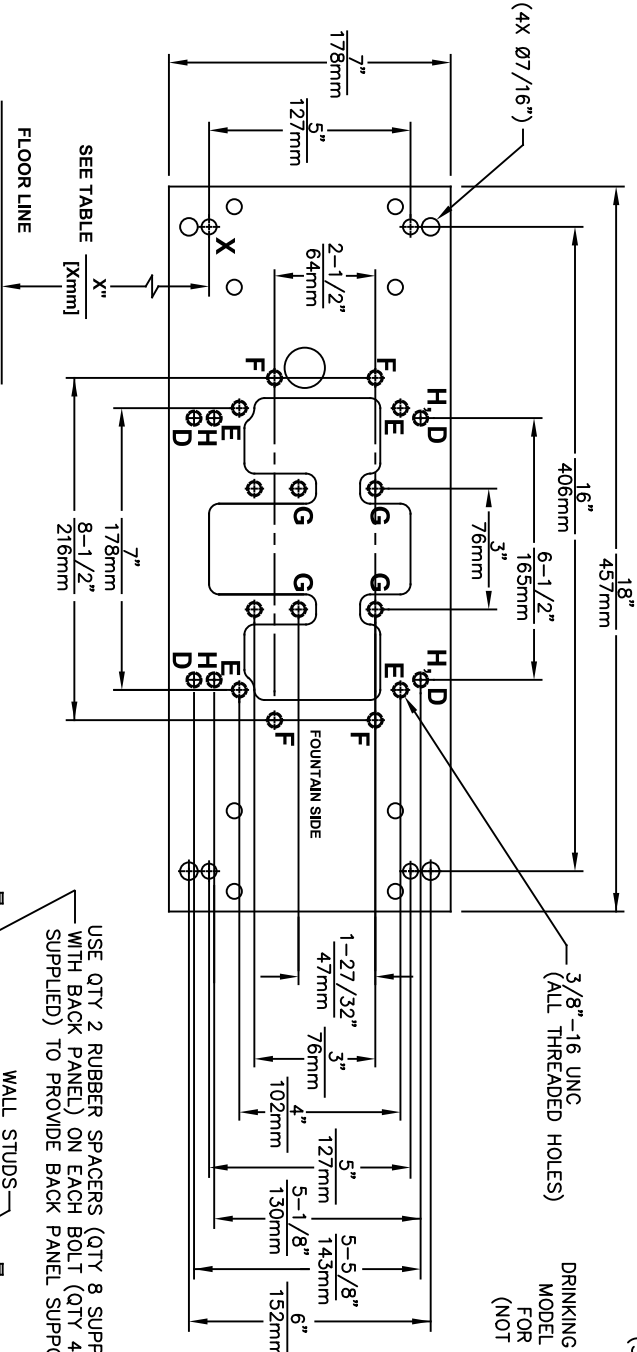
Since 1906

1455 KLEPPE LANE  
SPARKS, NEVADA 89431  
(775) 359-4712 FAX (775) 359-7424  
E-MAIL: HAWS@HAWSCO.COM  
WEBSITE: WWW.HAWSCO.COM

ECN NO. REVISED PER BY: JG  
DRAWN: JG  
DATE: 10/03/24  
APPROVED: JG

MODEL(S)  
67/00

PART NUMBER  
0002080016  
REVISION  
26




| DRINKING FOUNTAIN (ONLY) AT 27" ADULT HEIGHT<br>(SEE SPECIFIC MODEL O&M'S FOR OTHER HEIGHTS) |                            |  |  |
|--|----------------------------|--|--|
| MODEL  | USE BOWL MTG. HOLE PATTERN | USE "X" DIM. BELOW TO POSITION MOUNTING PLATE HOLE "X" |  |
| 1001   | "G"                        | 25-3/8" [645mm]  |  |
| 1025   | "D"                        | 28-1/8" [714mm]  |  |
| 1047   | "E"                        | 24-3/8" [619mm]  |  |
| 1105   | "H"                        | 34-5/16" [872mm]                                       |  |
| 1107   | "F"                        | 26-3/16" [665mm]                                       |  |
| 1109   | "H"                        | 27-5/16" [694mm]                                       |  |
| 1109.14  | "H"                        | 27-5/16" [694mm]                                       |  |
| 1109FR   | "H"                        | 27-5/16" [694mm]                                       |  |
| 1311   | "E"                        | 26-3/4" [679mm]  |  |
| WASTE DRIP TRAY (ONLY) AT 27" ADULT HEIGHT   |                            |  |  |
| 6468   | "G"                        | 25-3/8" [645mm]  |  |
| 1922   | "G"                        | 25-3/8" [645mm]  |  |

**6700 MOUNTING PLATE**  
**FOR USE WITH**  
**DRINKING FOUNTAINS**  
**AND WASTE DRIP TRAYS**  
**AT 27" ADULT HEIGHT**  
**(SEE SHEETS 2 - 5 FOR USE WITH**  
**BOTTLE FILLER 1920/1920HO SERIES**  
**AND CHILD HEIGHT APPLICATIONS)**

**\*\*FINISH WALL OVER MOUNTING PLATE AND BEHIND BACK PANEL. MAKE SURE THAT FINISHED WALL EXTENDS WITHIN THE BRACKET/BOWL MOUNTING HOLES (TO PROVIDE SURFACE AREA FOR RUBBER SPACERS TO CONTACT).**

**CAUTION**

REGARDING CONCRETE/MASONRY WALL MOUNTING: DO NOT SECURE MOUNTING PLATE TO SAME SIDE OF WALL AS FOUNTAIN. AVOID COMPROMISING INTEGRITY OF WALL WHEN ANCHORING FOUNTAIN. IT IS RECOMMENDED THAT INSTALLER CALL TECHNICAL SUPPORT IF THERE ARE ANY QUESTIONS AS TO HOW TO OBTAIN A PROPER ANCHOR IN CONCRETE/MASONRY WALLS. 1-800-766-5612



**Haws®**  
Since 1906

ECN NO. REVISED PERBY: 6700  
DRAWN: JG  
DATE: 09/20/23  
CHKD: JG  
CUL: JG

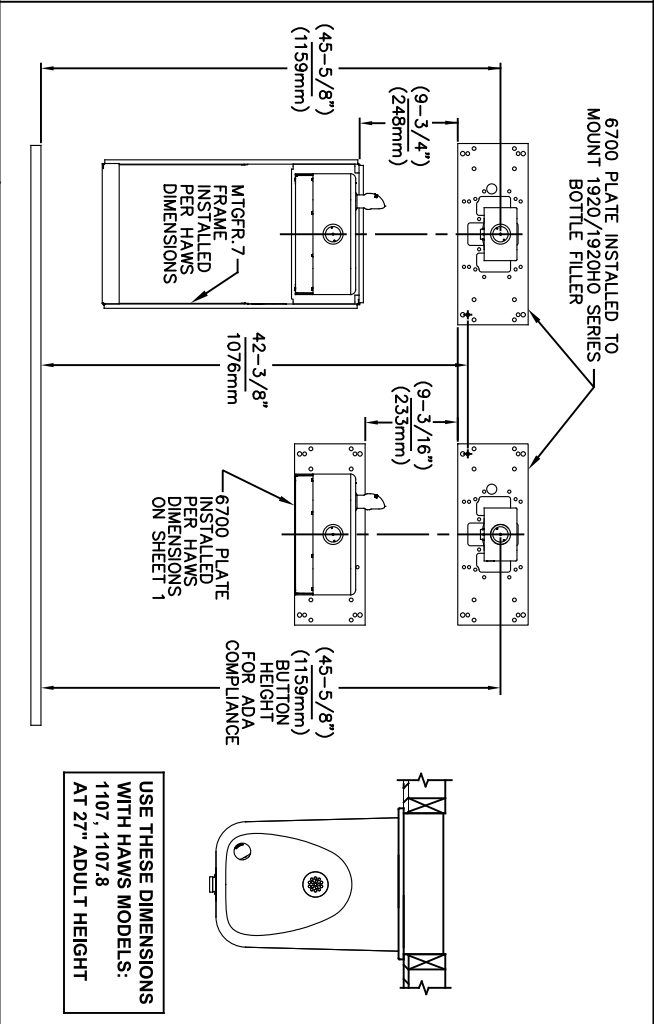
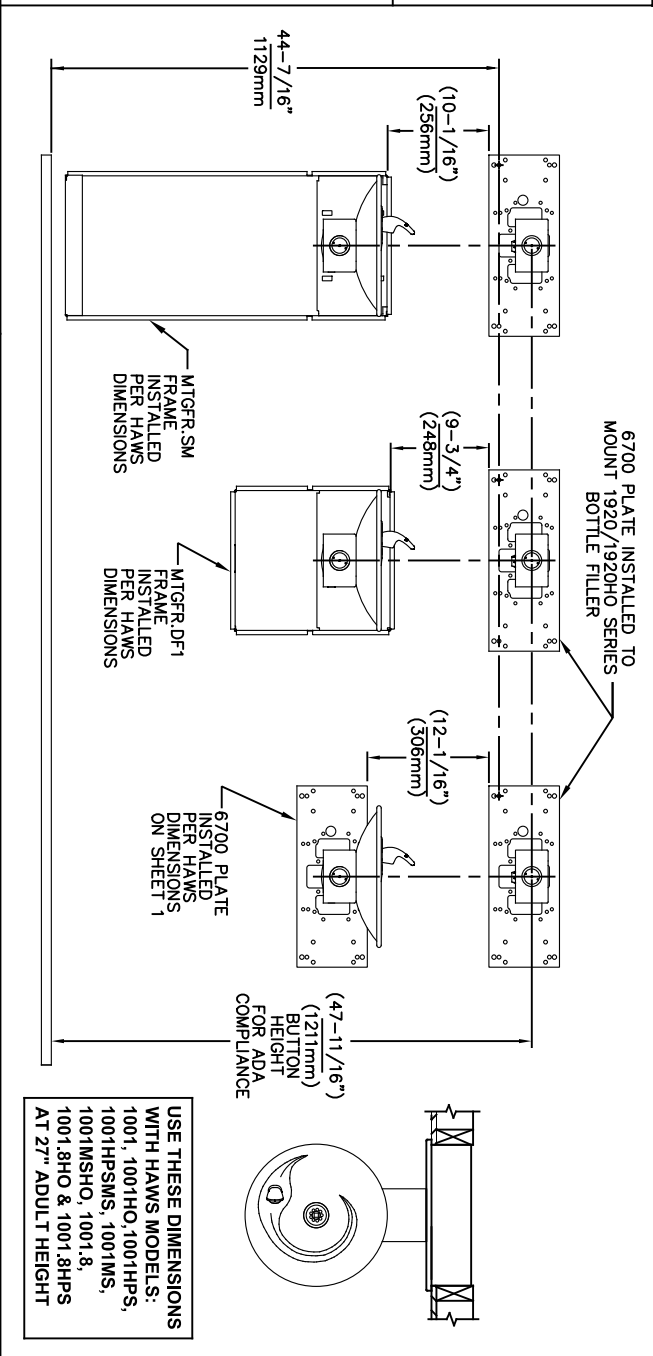
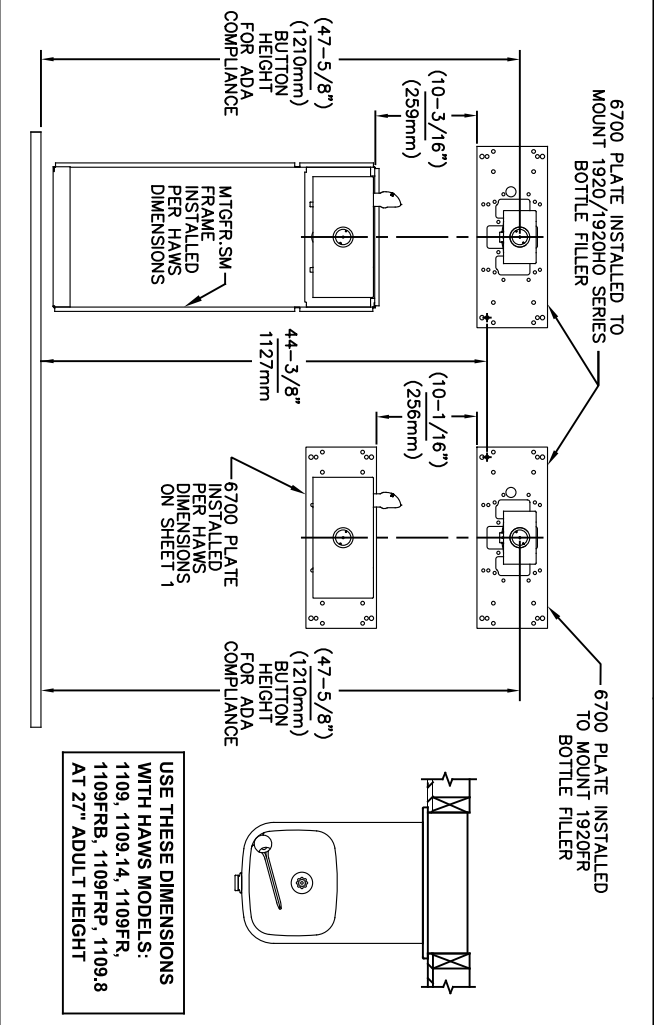
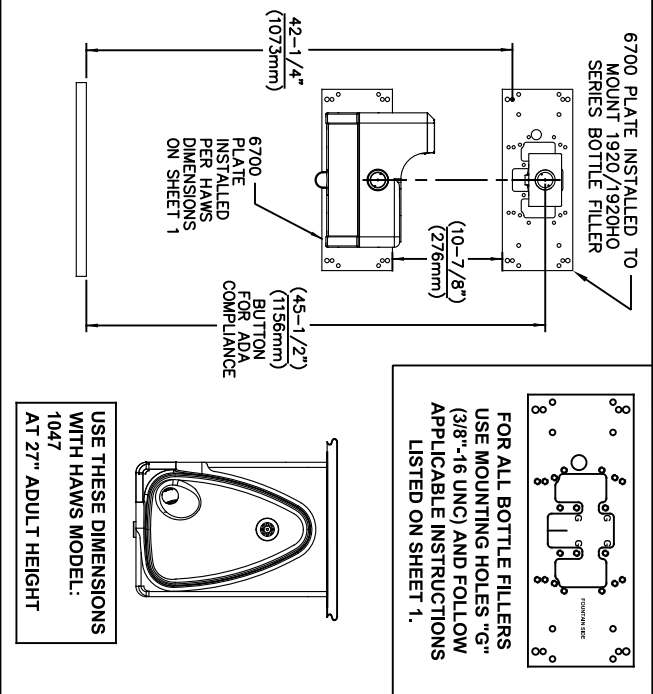
MODEL(S)  
6700

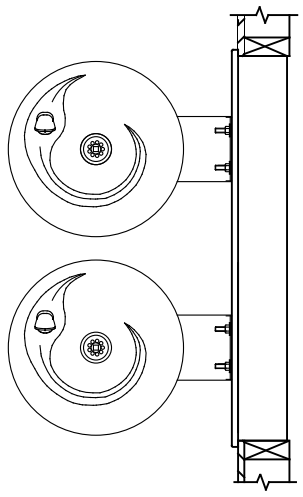
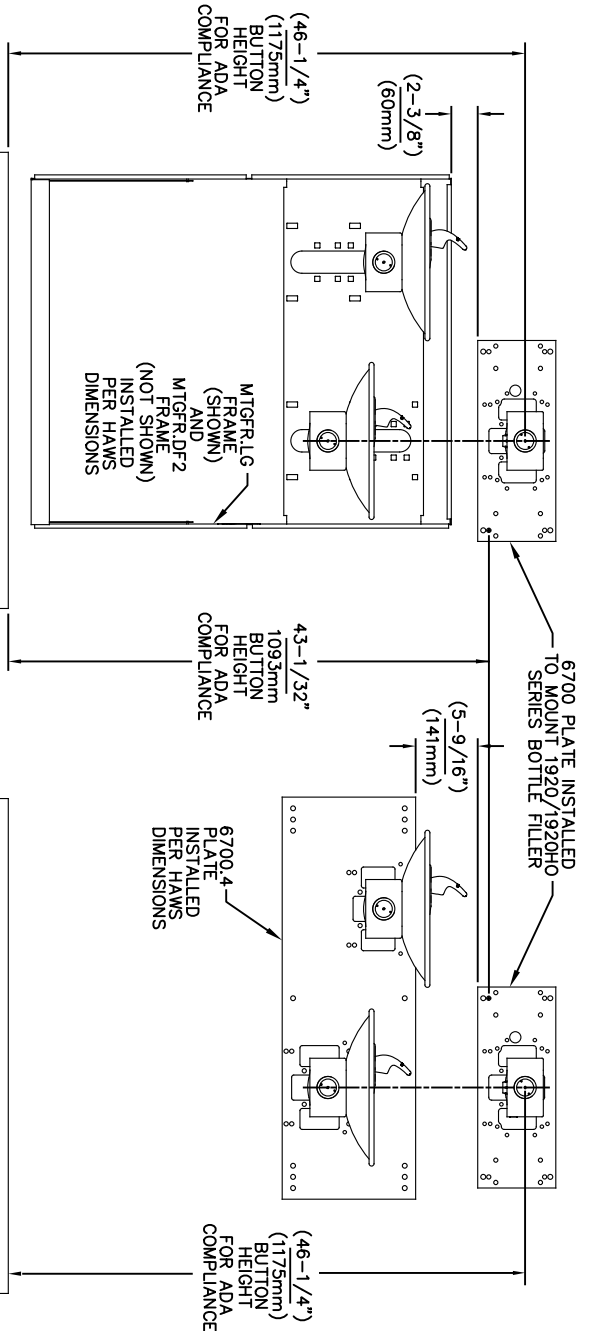
SCALE: N/A  
DRAWING TYPE: INSTALLATION  
SIZE: A  
SHEET: 2 OF 6

1455 KLEPPE LANE  
SPARKS, NEVADA 89431  
(775) 359-4712 FAX (775) 359-7424  
E-MAIL: HAWS@HAWS.CO.COM  
WEBSITE: WWW.HAWS.CO.COM

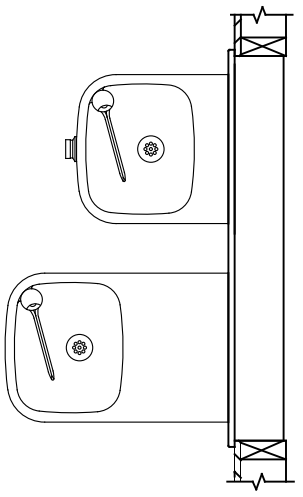
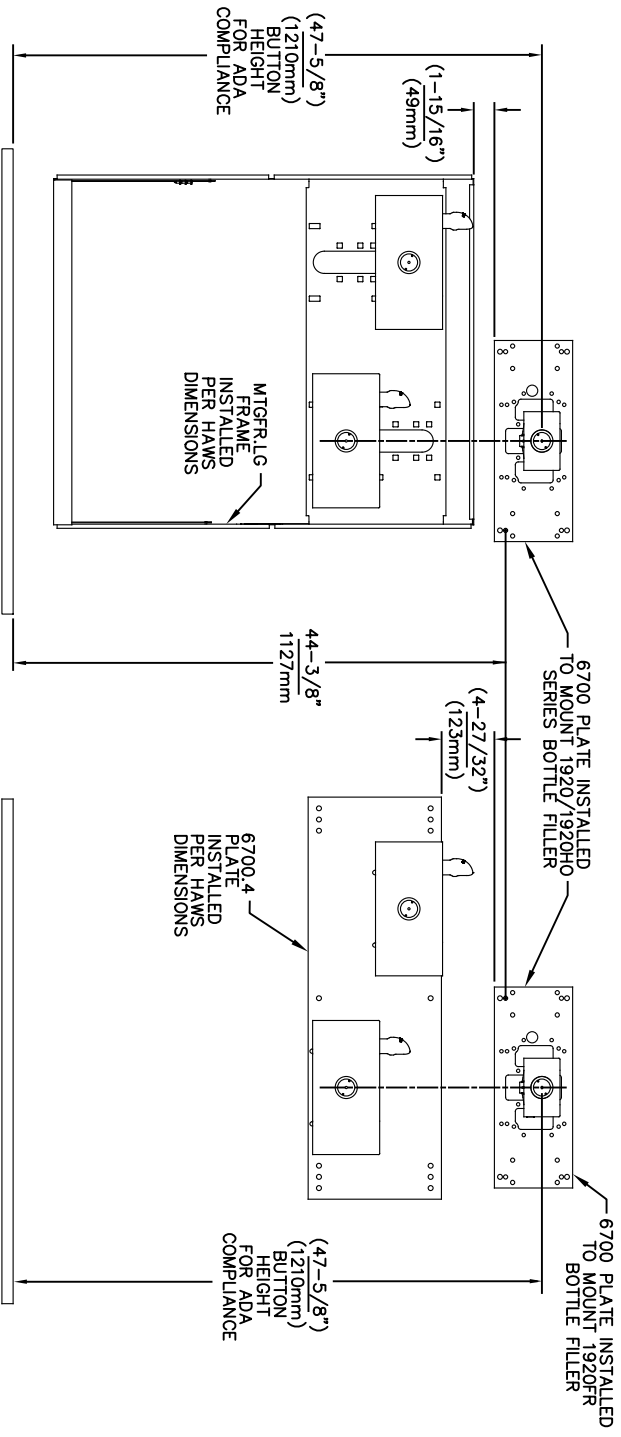
PART NUMBER  
0002080016

REVISION  
26






**USE THESE MOUNTING DIMENSIONS IF INSTALLING OVER HAWS FOUNTAIN**  
MODEL: 1011, 1011HO, 1011HO2, 1011HPS, 1011HPSHO, 1011HPSHO2, 1011HPSMS, 1011MS, 1011MSHO, 1011MSHO2, 1011.8, 1011.8HO, 1011.8HO2 & 1011.8HPSM AT 27" ADULT HEIGHT  
**INSTALL THE 6700 ABOVE THE FOUNTAIN MOUNTING PLATE OR FRAME AT THE DIMENSION SHOWN FOR CORRECT BACKPANEL SPACING**  
**BACK PANELS FOR BOTTLE FILLERS (NOT SUPPLIED - OPTIONAL) ARE NOT SHOWN FOR CLARITY.**



**USE THESE MOUNTING DIMENSIONS IF INSTALLING OVER HAWS FOUNTAIN**  
MODEL: 1119, 1119.14, 1119.14HO, 1119.14HO2, 1119FR, 1119FRB, 1119FRP, 1119HO, 1119HO2 & 1119.8 AT 27" ADULT HEIGHT  
**INSTALL THE 6700 ABOVE THE FOUNTAIN MOUNTING PLATE OR FRAME AT THE DIMENSION SHOWN FOR CORRECT BACKPANEL SPACING**  
**BACK PANELS FOR BOTTLE FILLERS (NOT SUPPLIED - OPTIONAL) ARE NOT SHOWN FOR CLARITY.**

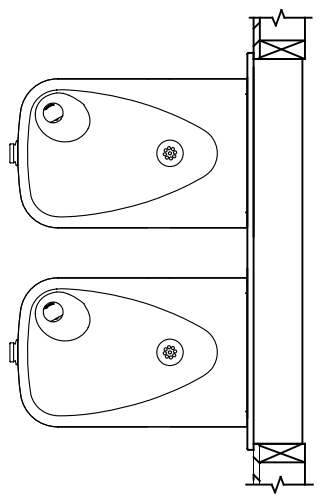
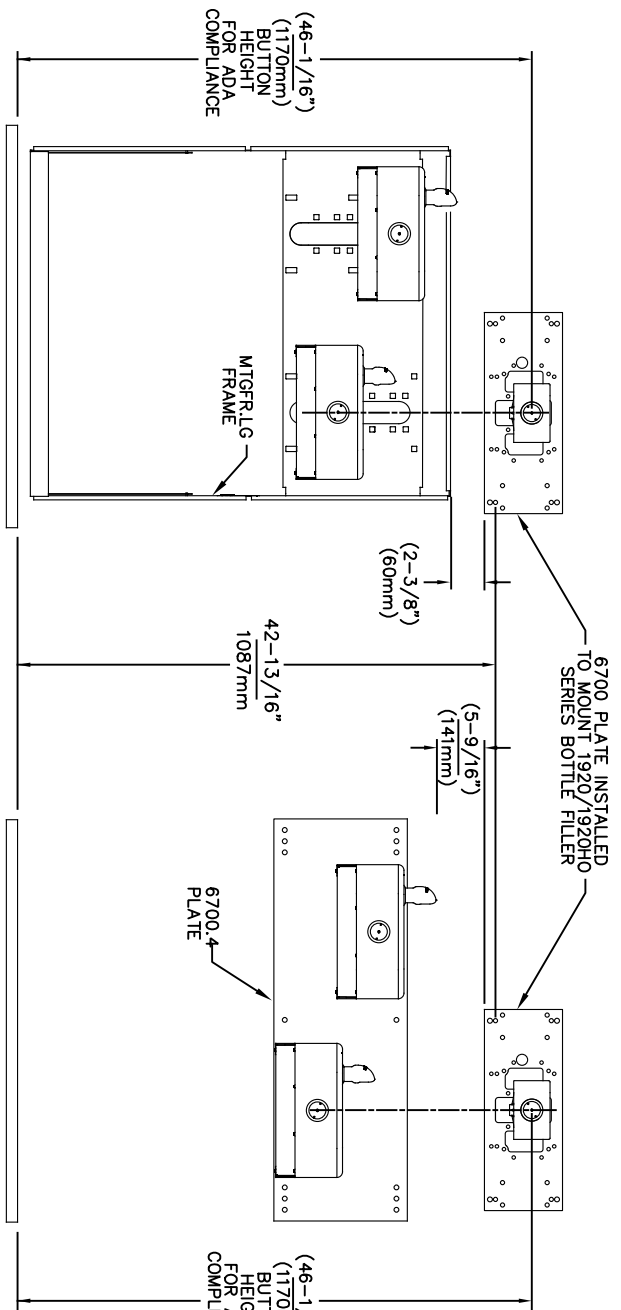
- NOTES:
1. WHEN INSTALLING THIS UNIT, LOCAL, STATE OR FEDERAL CODES SHOULD BE ADHERED TO.
  2. BACK PANELS (OPTIONAL) NOT SHOWN FOR CLARITY.

6700 MOUNTING PLATE  
FOR USE WITH BOTTLE FILLER  
(SEE SHEET 1 FOR USE WITH  
DRINKING FOUNTAINS)

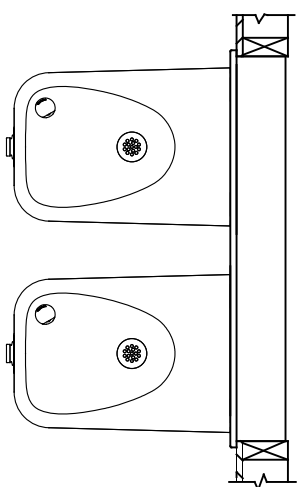
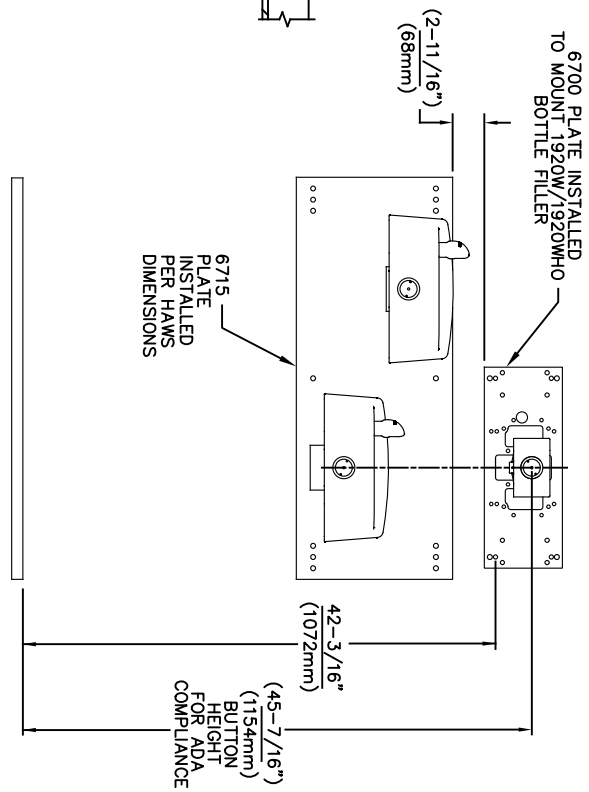
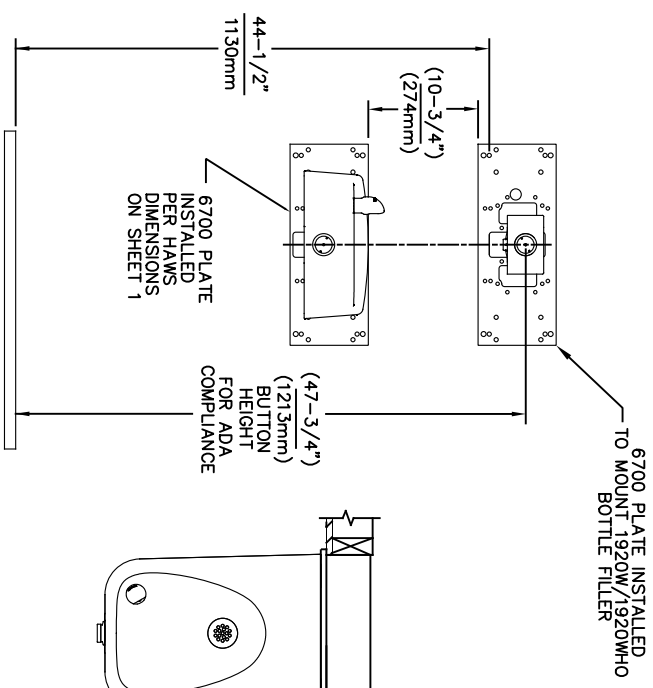


1456 KLEPPE LANE  
SPARKS, NEVADA 89431  
(775) 359-4712 FAX (775) 359-7424  
E-MAIL: HAWS@HAWS.CO.COM  
WEBSITE: WWW.HAWS.CO.COM

|                          |                            |
|--------------------------|----------------------------|
| ECN NO. REVISED PERBY:   | MODEL(S)                   |
| 5550 ECN: 6148 JG        | 6700                       |
| DRAWN: DATE: 09/14/20 JG |                            |
| APPROVED: DATE: 02/11/25 |                            |
| SCALE: 1:13              | DRAWING TYPE: INSTALLATION |
| SHEET 4 OF 6             | REVISION: 26               |




USE THESE MOUNTING DIMENSIONS IF INSTALLING OVER HAWS FOUNTAIN MODEL: 1117, 1117.8 AT 27" ADULT HEIGHT  
INSTALL THE 6700 ABOVE THE FOUNTAIN MOUNTING PLATE OR FRAME AT THE DIMENSION SHOWN FOR CORRECT BACKPANEL SPACING  
BACK PANELS FOR BOTTLE FILLERS (NOT SUPPLIED - OPTIONAL) ARE NOT SHOWN FOR CLARITY.



USE THESE MOUNTING DIMENSIONS IF INSTALLING OVER HAWS FOUNTAIN MODEL: 1311, 1501 AT 27" ADULT HEIGHT  
INSTALL THE 6700 ABOVE THE FOUNTAIN MOUNTING PLATE AT THE DIMENSION SHOWN FOR CORRECT BACKPANEL SPACING (IF APPLICABLE).  
BACK PANEL FOR BOTTLE FILLER (NOT SUPPLIED - OPTIONAL) IS NOT SHOWN FOR CLARITY.

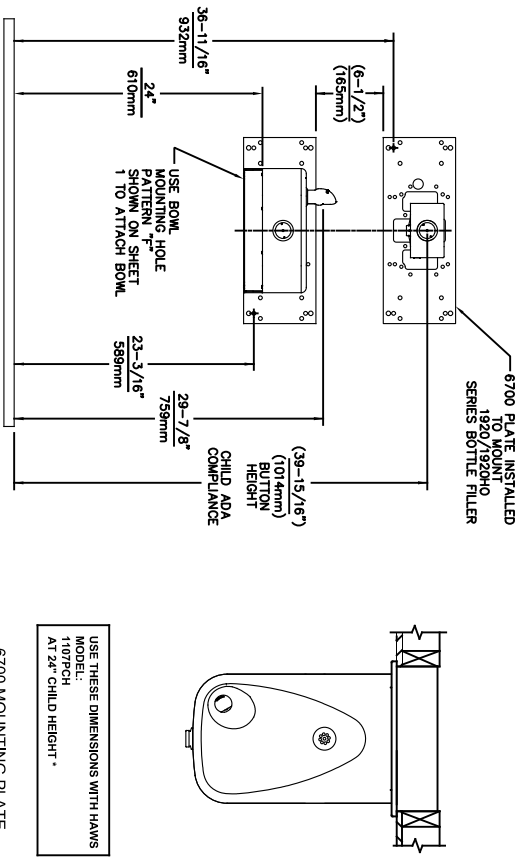
- NOTES:
1. WHEN INSTALLING THIS UNIT, LOCAL, STATE OR FEDERAL CODES SHOULD BE ADHERED TO.
  2. BACK PANELS (OPTIONAL) NOT SHOWN FOR CLARITY.

6700 MOUNTING PLATE  
FOR USE WITH BOTTLE FILLER  
(SEE SHEET 1 FOR USE WITH  
DRINKING FOUNTAINS)

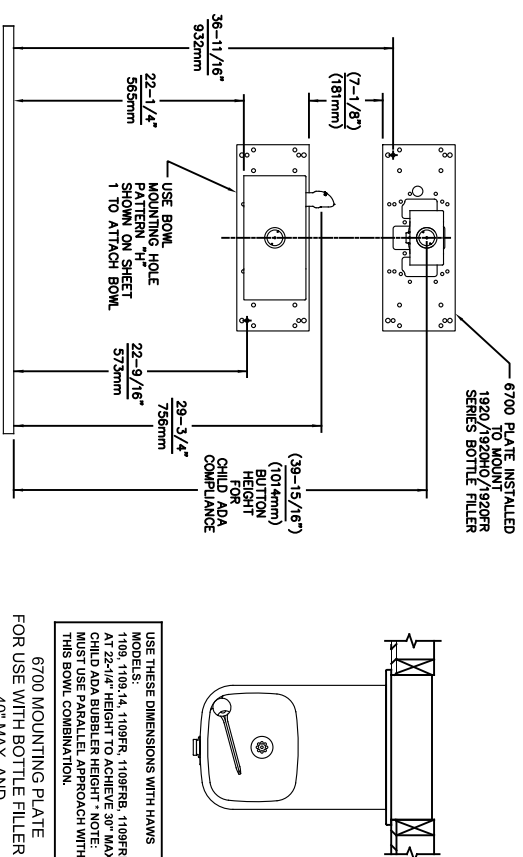


Since 1906

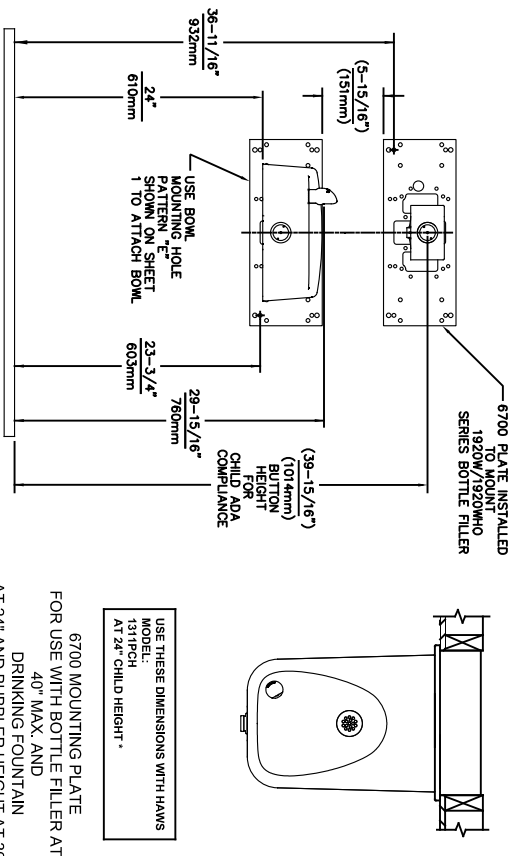
|              |                         |                            |   |
|--------------|-------------------------|----------------------------|---|
| ECN NO. 5550 | REVISED PERBY: 05/14/20 | MODEL(S) 6700              | 1456 KLEPPE LANE<br>SPARKS, NEVADA 89431<br>(775) 359-4712 FAX (775) 359-7424<br>E-MAIL: HAWS@HAWS.CO.COM<br>WEBSITE: WWW.HAWS.CO.COM |
| DRAWN: FV    | DATE: 02/11/25          | SCALE: 1:13                | INSTALLATION  |
| APPROVED: FV | DATE: 02/11/25          | DRAWING TYPE: SHEET 5 OF 6 | REVISION: 26  |



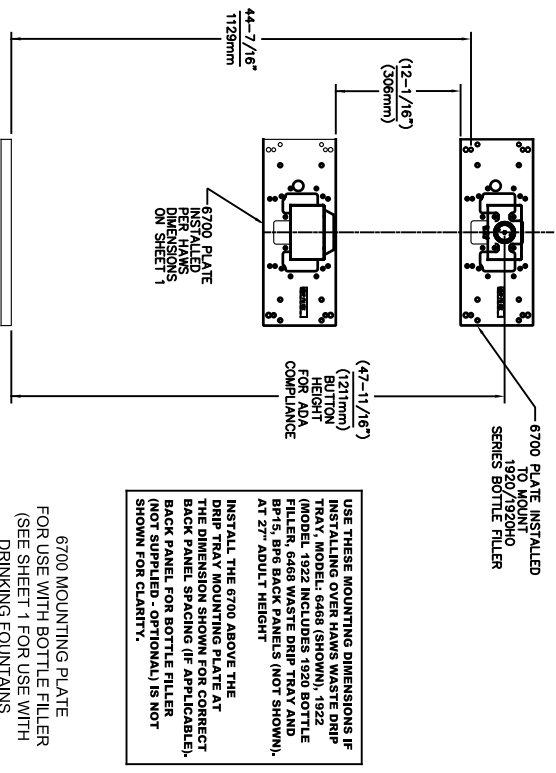
6700 MOUNTING PLATE  
FOR USE WITH BOTTLE FILLER AT  
40\" MAX. AND  
DRINKING FOUNTAIN  
AT 24\" AND BUBBLER HEIGHT AT 30\"  
MAX. FOR CHILD ADA HEIGHT  
(SEE SHEETS 1 & 2 FOR USE WITH  
DRINKING FOUNTAIN AT 27\" ADULT  
HEIGHT DIMENSIONS)



6700 MOUNTING PLATE  
FOR USE WITH BOTTLE FILLER AT  
40\" MAX. AND  
DRINKING FOUNTAIN  
BUBBLER HEIGHT AT 30\" MAX.  
FOR CHILD ADA HEIGHT  
MUST USE PARALLEL APPROACH  
WITH THIS BOWL COMBINATION  
(SEE SHEETS 1 & 2 FOR USE WITH  
DRINKING FOUNTAIN AT 27\" ADULT  
HEIGHT DIMENSIONS)



6700 MOUNTING PLATE  
FOR USE WITH BOTTLE FILLER AT  
40\" MAX. AND  
DRINKING FOUNTAIN  
AT 24\" AND BUBBLER HEIGHT AT 30\"  
MAX. FOR CHILD ADA HEIGHT  
(SEE SHEETS 1 & 4 FOR USE WITH  
DRINKING FOUNTAIN AT 27\" ADULT  
HEIGHT DIMENSIONS)



6700 MOUNTING PLATE  
FOR USE WITH BOTTLE FILLER  
(SEE SHEET 1 FOR USE WITH  
DRINKING FOUNTAINS  
AND WASTE DRIP TRAY)



**Since 1906**

1456 KLEPPE LANE  
SPARKS, NEVADA 89431  
(775) 359-4712 FAX (775) 359-7424  
E-MAIL: HAWS@HAWS.CO.COM  
WEBSITE: WWW.HAWS.CO.COM

ECN NO. REVISED PERBY: MODEL(S)  
5893 1 ECN: 6148 JG  
DRAWN: DATE: CHKD:  
FV 07/26/23 JG  
APPROVED: DATE: SCALE: 1:13 DRAWING TYPE: INSTALLATION SHEET 6 OF 6

6700

PART NUMBER  
0002080016  
REVISION  
26