

FEATURES & BENEFITS

CONSTRUCTION

One-piece drinking fountain with low-profile design made of 14 gauge Type 304 stainless steel with 1/4" (.6 cm) thick stainless back plate welded in, and vandal-resistant stainless bottom plate. Satin finish resists stains and corrosion.

BUBBLER HEAD

Polished chrome-plated brass bubbler head with integral 11/16" dia. basin shank and stainless anti-rotation roll pin for vandal resistance strength. Shielded, angled stream opening provides a steady, sanitary source of drinking water at .45 gpm.

DRINKING FOUNTAIN VALVE

The push-button activated valve offers the only all stainless steel valve body that is machined out of solid bar stock, is fully serviceable through the front of the push button assembly offering access to the water control cartridge and integral water supply strainer, and with front access to the water stream height adjustment for easy maintenance without having to remove the valve. Operating pressure range of 30 to 90 psi (2.1 to 6.2 bar).

VANDAL RESISTANT

The bubbler head, push button, drain strainer and bottom plate are locked in place, discouraging unwanted vandal tampering.

INTEGRATED TRAP

All cast brass 1-1/4" NPT adjustable trap completely concealed inside bottom plate for easy installation and access.

QUALITY CONTROL

Pre-built fountain is pressure tested to ensure no leaks and proper functionality.

OPTIONS

- Water Filter: Model 6480 filter kit with 3000 gallon carbon block filter, filter head, and mounting bracket.
- Bottle Filler: Model 1920, bottle filler can be a stand-alone station, or mounted above Haws 1107L series drinking fountain models.
- Bottle Filler Stand: Model BTL1107, add-on stainless steel stand to place bottle on when 1920 bottle filler is used.

For more information, visit www.hawsco.com or call (888) 640-4297.



SPECIFICATIONS

Model 1107.8B ADA electric wall mounted vandal-resistant water cooler shall include a 14 gauge Type 304 Stainless Steel satin finish basin, 16 gauge galvanized steel in-wall mounting frame with welded-in heavy-duty 10 gauge mounting plate, vandal-resistant push-button operated stainless steel valve with front-accessible cartridge and flow adjustment, 100% lead-free waterways, polished chrome-plated brass vandal-resistant bubbler head, and a polished chrome-plated brass vandal-resistant waste strainer. Unit shall also include a vandal-resistant bottom plate, satin stainless steel back panel and louvered intrusion-proof grill, and 1-1/4" NPT trap. Unit can be mounted to meet ADA or Child ADA specifications. The refrigeration system is hermetically sealed and delivers a minimum of 8 gph (30.3 L) of water at 50° F (10° C) cooled from 80° F (26.7° C) inlet water at 90° F (32.2° C) ambient. 115 Volts, 60Hz, rated watts: 370, full load amps: 5.

FOR INDOOR USE ONLY

APPLICATIONS

Specifically, this type fountain may be placed in settings such as: schools, office buildings, shopping malls, and other indoor environments. Electric water coolers are not recommended or designed for outdoor applications or enclosed pool areas (chlorine). These conditions may void warranty. Model meets all current Federal Regulations for the disabled including those in the Americans with Disabilities Act. Haws manufactures drinking fountains, faucets and electric water coolers to be lead-free by all known definitions including NSF/ANSI/CAN 61-Section 9, NSF/ANSI/CAN 372, California Proposition 65, and the Federal Safe Drinking Water Act. Product is compliant to California Health and Safety Code 116875 (AB 1953-2006), and 116876 (AB 100) "NSF/ANSI/CAN 61: Q ≤ 1". Haws electric water coolers comply with ARI Standard 1010 and ANSI A117.1, and are listed by Underwriter Laboratories to U.S. and Canadian standards.



NOTES:

1. HOLD ROUGH-IN DIMENSIONS AS $1\frac{1}{8}"$ (3.2mm).
2. WHEN INSTALLING THIS UNIT, LOCAL, STATE, OR FEDERAL CODES SHOULD BE ADHERED TO. FOR INSTALLATION HEIGHTS OTHER THAN SHOWN, DIMENSIONS MARKED (*) MUST BE ADJUSTED ACCORDINGLY.
3. REFER TO 5874 SERIES OPERATION AND MAINTENANCE MANUAL FOR PUSH BUTTON AND VALVE INSTALLATION/MAINTENANCE INSTRUCTIONS.
4. REFER TO MTGFR 7 INSTALLATION DRAWING FOR FRAME ROUGH-IN DIMENSIONS.
5. INSERT 5/16"-18 PANEL NUT RETAINERS FROM OPPOSITE SIDE AT LOCATIONS SHOWN.
6. FOUNTAIN REMOVAL - FIRST REMOVE SCREWS AND THEN SQUEEZE CLIPS ON NUT RETAINER TO POP OUT. INSTALL IS REVERSE OF REMOVAL.
7. ALIGN HOLES IN CHILLER SUPPORT TRAY WITH HOLES IN FRAME AND FASTEN WITH #10 SHEET METAL SCREWS.
8. ROUGH-IN DIMENSIONS FOR FOUNTAIN HEIGHTS:

CHILD WHEELCHAIR HEIGHT:

WASTE: 26-1/4" (667mm)
SUPPLY: 26-1/8" (664mm)
FOUNTAIN: 24" (610mm)
BUBBLER: 29-7/8" (756mm)
FRAME: 3-1/8" (79mm)

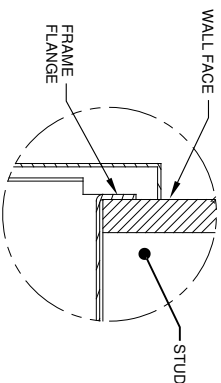
ADULT WHEELCHAIR HEIGHT:

WASTE: 29-1/4" (743mm)
SUPPLY: 29-1/8" (740mm)
FOUNTAIN: 27" (686mm)
BUBBLER: 32-7/8" (832mm)
FRAME: 6-1/8" (156mm)

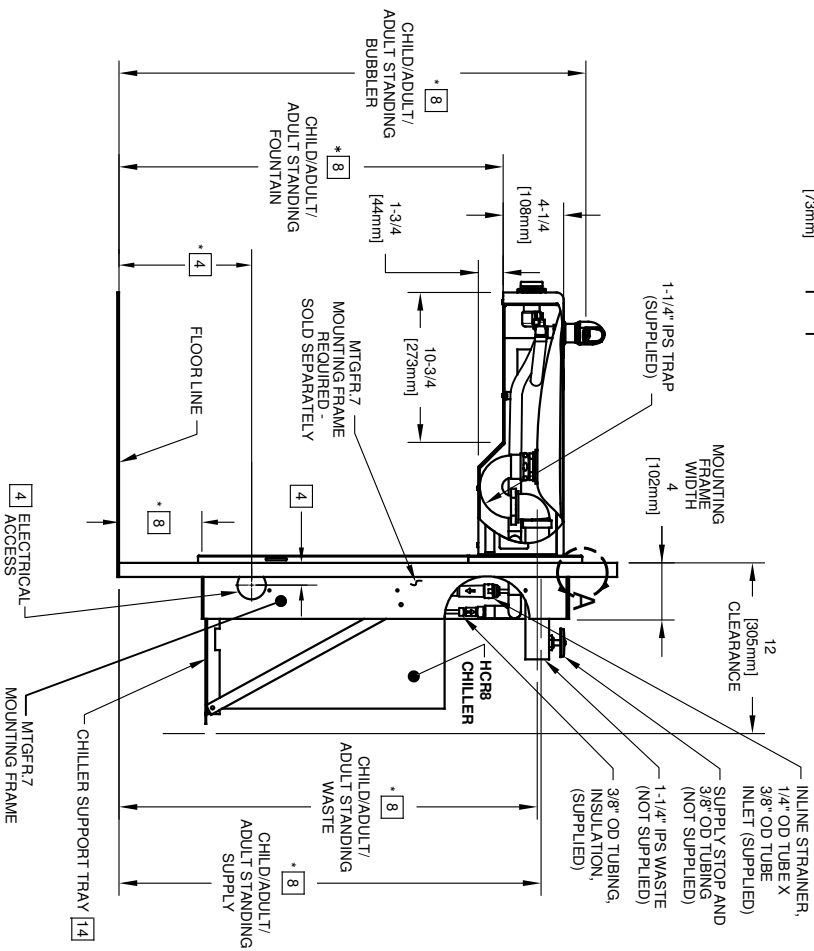
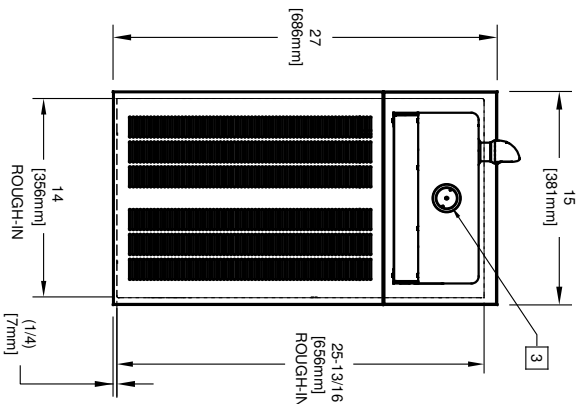
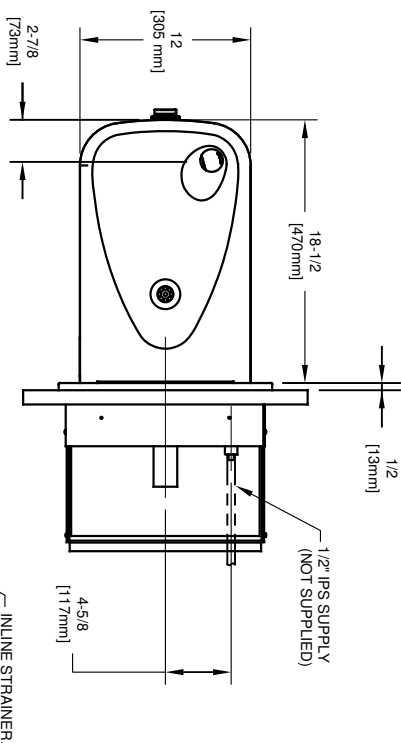
ADULT STANDING HEIGHT:

WASTE: 34-3/4" (883mm)
SUPPLY: 34-5/8" (879mm)
FOUNTAIN: 32-1/2" (826mm)
BUBBLER: 39-3/8" (972mm)
FRAME: 11-5/8" (384mm)

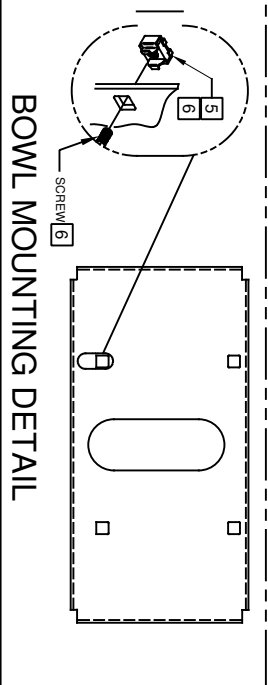
**IMPORTANT: MOUNTING
FRAME MUST BE INSTALLED
SO THAT LIP OF FRAME SITS
AGAINST FINISHED WALL FACE**




DETAIL A



BOWL MOUNTING DETAIL



		1455 KLEPPLE LANE SPARKS, NEVADA 89431 (775) 359-4712 FAX (775) 359-7424 E-MAIL: HAWMS@HAWMS.CO.COM WEBSITE: WWW.HAWMS.CO.COM	
CON NO. REVISED PER:BY: ECN: 5545 FV		MODEL(S) H1107.8	
DRAWN: DATE: CHK'D: C. FENNER 12.19.06 DP		DATE: 06/26/20	
APPROVED: FV		SCALE: NA DRAWING TYPE: INSTALLATION	
SIZE: A		SHEET 1 OF 1	
REVISION		15	
PART NUMBER 0002080221.D			

CALLOUT LEGEND	
A	1/4" OD WATER OUTLET
B	3/8" OD WATER INLET
C	TEMPERATURE CONTROL
D	JUNCTION BOX
E	ELECTRICAL WIRING OPENING

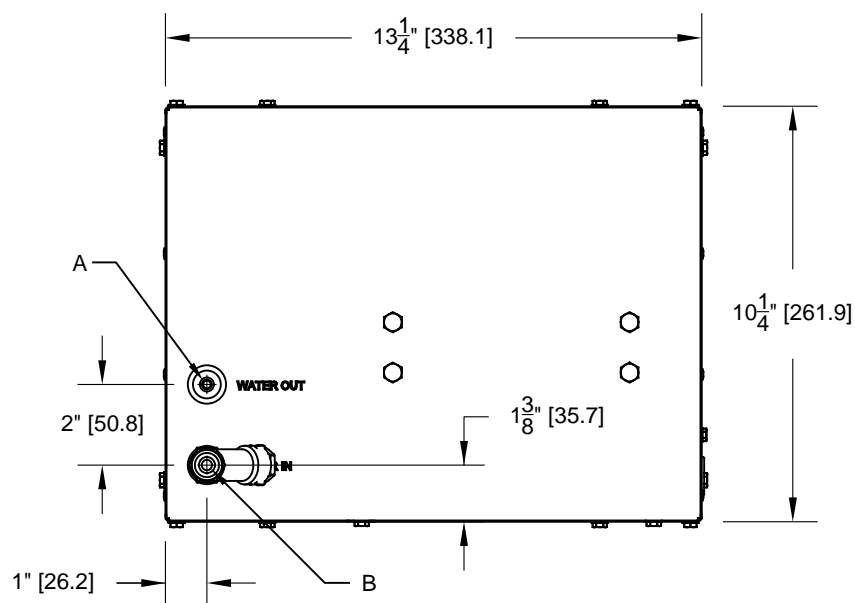


FIG. 2

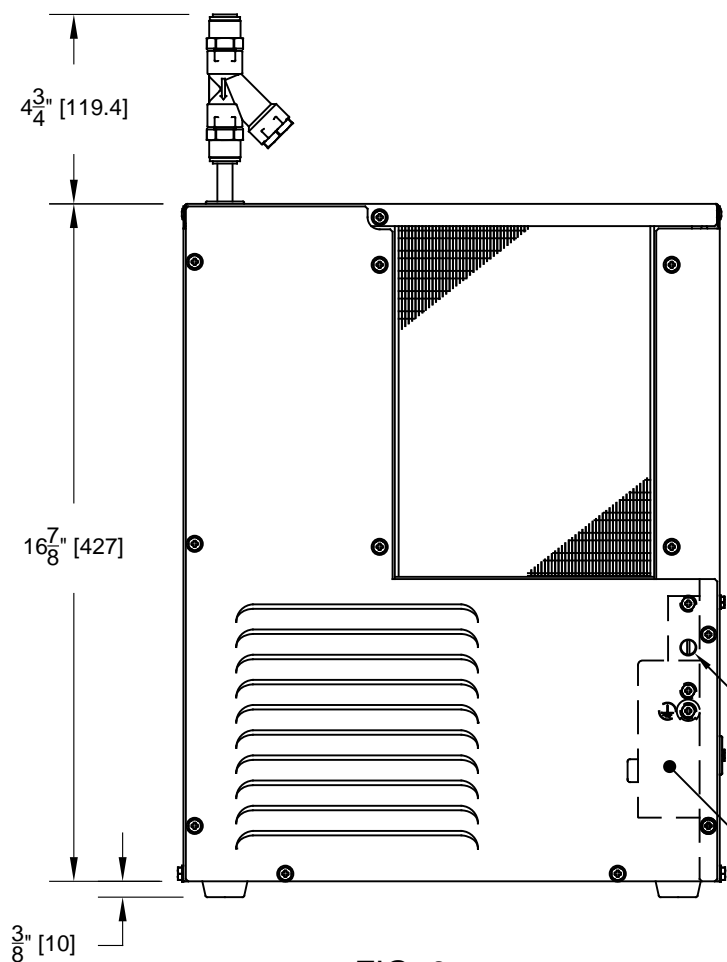


FIG. 3

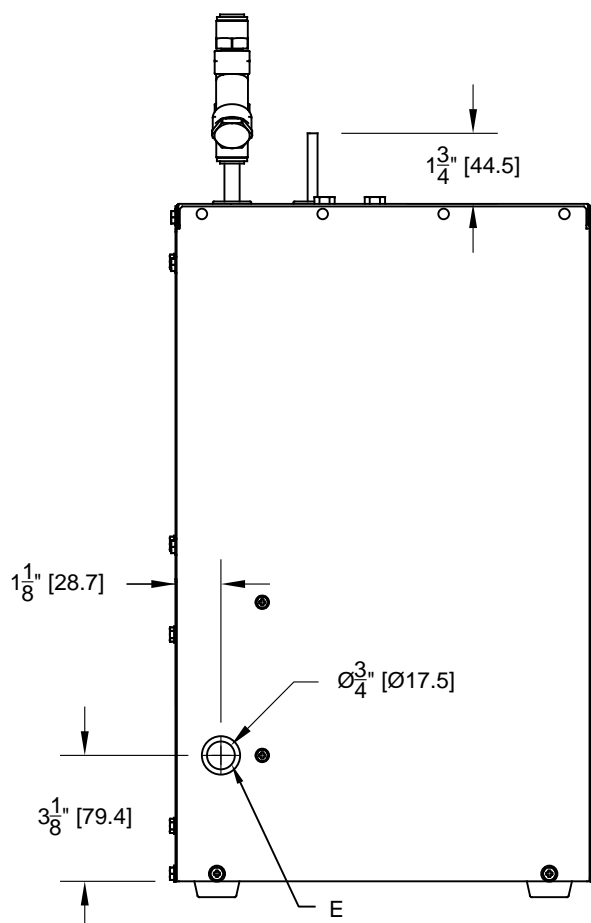



FIG. 4

		Haws®		1455 KLEPPE LANE SPARKS, NEVADA 89431 (775) 359-4712 FAX (775) 359-7424 E-MAIL: HAWS@HAWS.CO.COM WEBSITE: WWW.HAWS.CO.COM	
ECN NO. 4997	REVISED PER ECN: 5401	BY DHP	MODEL(S) HCR8 REMOTE CHILLER		PART NUMBER 0580000134.D
DRAWN VWC	DATE 01/25/16	CHKD DHP			REVISION 4
APPROVED JL	DATE 02/05/19		SCALE: NA	DRAWING TYPE: INSTALLATION	SIZE: A
					SHEET 1 OF 2

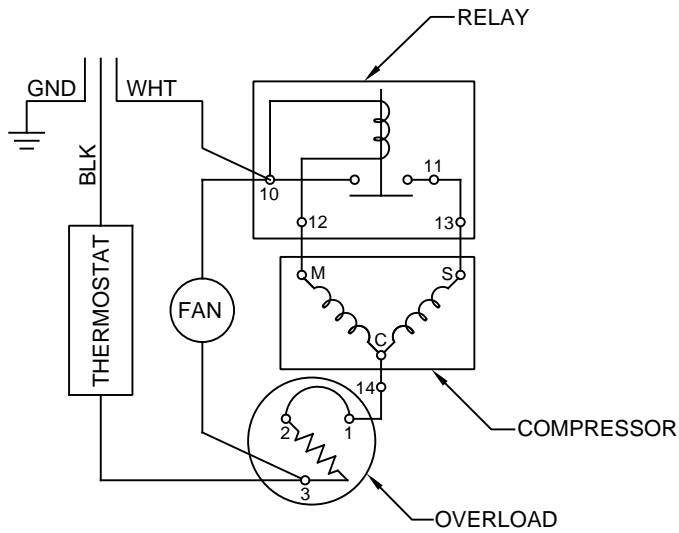


FIG. 5
WIRING DIAGRAM

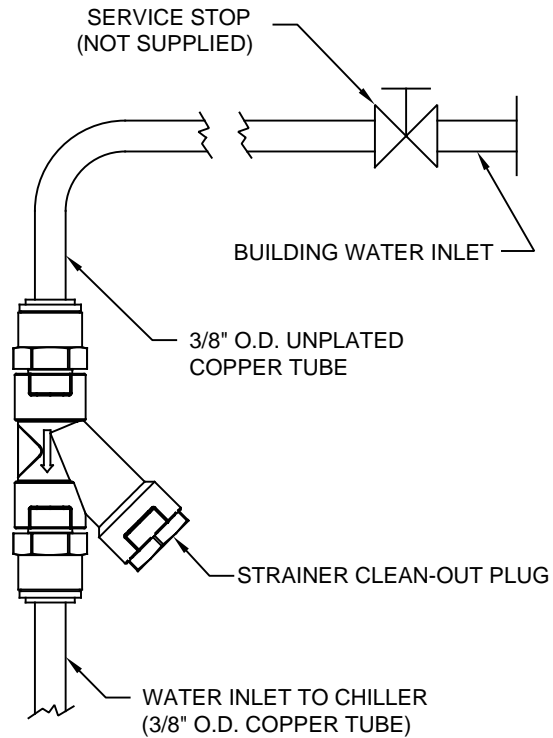


FIG. 6
WATER CONNECTION DIAGRAM

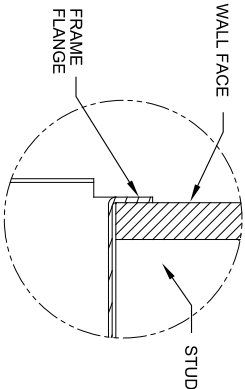
		Haws®		1455 KLEPPE LANE SPARKS, NEVADA 89431 (775) 359-4712 FAX (775) 359-7424 E-MAIL: HAWS@HAWS.CO.COM WEBSITE: WWW.HAWS.CO.COM	
ECN NO. 4997	REVISED PER ECN: 5401	BY DHP	MODEL(S)	PART NUMBER 0580000134.D	
DRAWN VWC	DATE 01/25/16	CHKD DHP	HCR8 REMOTE CHILLER		REVISION 4
APPROVED JL	DATE 02/05/19	SCALE: NA	DRAWING TYPE: INSTALLATION	SIZE: A	SHEET 2 OF 2

MOUNTING FRAME INSTALLATION:

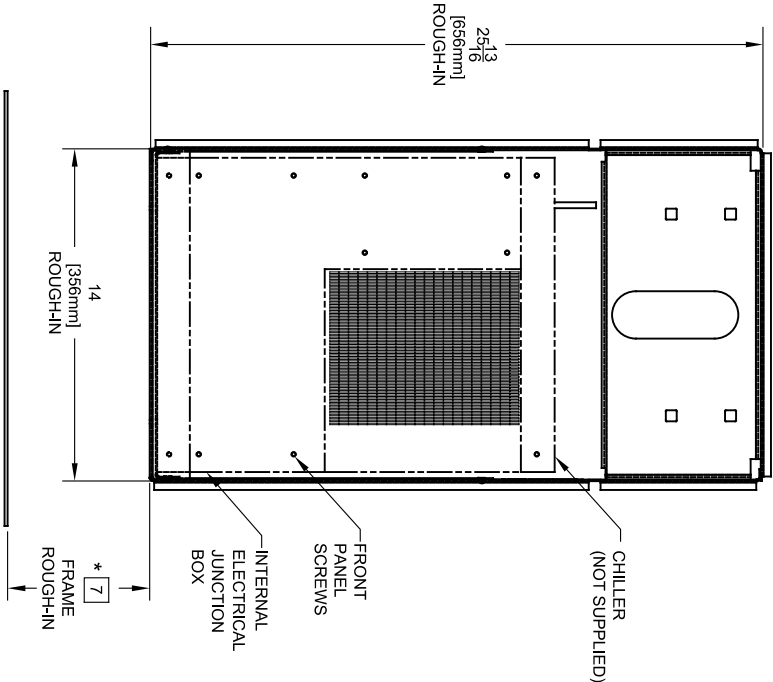
1. HOLD ROUGH-IN DIMENSIONS ± 1/8" (3.2mm)
2. WHEN INSTALLING THIS UNIT, LOCAL, STATE OR FEDERAL CODES SHOULD BE ADHERED TO. FOR DIFFERENT INSTALLATION HEIGHTS OTHER THAN SHOWN, DIMENSIONS MARKED (*) MUST BE ADJUSTED ACCORDINGLY.
3. ALIGN HOLES IN CHILLER SUPPORT TRAY WITH HOLES IN FRAME AND FASTEN IN PLACE WITH #10 SHEET-METAL SCREWS SUPPLIED WITH UNIT.
4. REFER TO MODEL 1107.8 INSTALLATION DRAWING FOR COMPLETED FOUNTAIN AND PLUMBING ROUGH-IN DIMENSIONS.
5. INSERT 5/16"-18 PANEL NUT RETAINERS (SUPPLIED WITH FOUNTAIN) FROM OPPOSITE SIDE OF OPENINGS.
6. FOUNTAIN REMOVAL: FIRST REMOVE SCREWS AND THEN SQUEEZE CLIPS ON NUT RETAINER (SUPPLIED WITH FOUNTAIN) TO POP OUT. INSTALL IS REVERSE OF REMOVAL.
7. ROUGH-IN DIMENSIONS FOR FOUNTAIN HEIGHTS:

CHILD WHEELCHAIR HEIGHT:
FRAME ROUGH-IN HEIGHT: 3-1/8" (79mm)
ELECTRICAL ACCESS: 6-5/8" (168mm)
ADULT WHEELCHAIR HEIGHT:
FRAME ROUGH-IN HEIGHT: 6-1/8" (156mm)
ELECTRICAL ACCESS: 9-5/8" (245mm)
ADULT STANDING HEIGHT:
FRAME ROUGH-IN HEIGHT: 11-5/8" (295mm)
ELECTRICAL ACCESS: 15-1/8" (384mm)

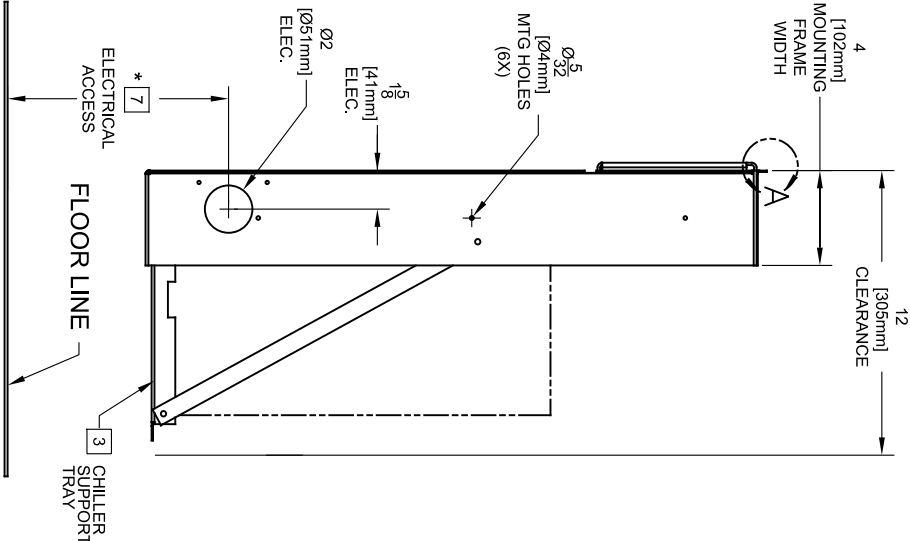
IMPORTANT: MOUNTING FRAME MUST BE INSTALLED SO THAT LIP OF FRAME BUTTS AGAINST FINISHED WALL FACE.



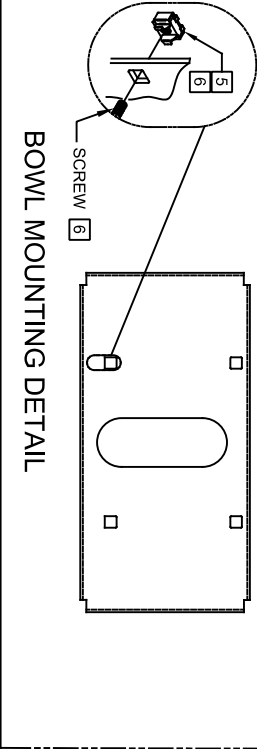
DETAIL A



- CHILLER ELECTRICAL INSTALLATION:
1. ENSURE ELECTRICAL POWER IS OFF AND POWER MATCHES VOLTAGE, PHASE AND CYCLE LISTED ON CHILLER LABEL
2. REMOVE FRONT PANEL TO GAIN ACCESS TO INTERNAL JUNCTION BOX.
3. HARDWARE CHILLER THROUGH ITS SIDE. WIRE IN ACCORDANCE WITH LOCAL, STATE OR FEDERAL ELECTRICAL CODES.
4. REPLACE FRONT PANEL. DO NOT APPLY POWER UNTIL UNIT WATER SUPPLY IS CONNECTED AND ON.



BOWL MOUNTING DETAIL



ECN NO. REVISED PERBY:

ECN 6148

DATE:

12-13-06

CHKD:

APPROVED:

FV

DATE:

02/12/25

SCALE:

1:1

DRAWING TYPE:

INSTALLATION

SIZE:

A

SHEET:

1 OF 1

MODEL(S)

MTGFR.7

REVISION

4

1456 KLEPPE LANE

SPARKS, NEVADA 89431

(775) 359-4712 FAX (775) 359-7424

E-MAIL: HAWS@HAWS.CO.COM

WEBSITE: WWW.HAWS.CO.COM

1456 KLEPPE LANE

SPARKS, NEVADA 89431

(775) 359-4712 FAX (775) 359-7424

E-MAIL: HAWS@HAWS.CO.COM

WEBSITE: WWW.HAWS.CO.COM

PART NUMBER

0002080010