

## FEATURES & BENEFITS

### CONSTRUCTION

Rugged ADA accessible 18 gauge Type 304 Stainless Steel swirl design bowl, 14 gauge Type 304 Stainless Steel bracket, and a vandal-resistant bottom plate provides a long lasting unit with added peace of mind.

### QUALITY CONTROL

Pre-built fountain is pressure tested to ensure no leaks and proper functionality

### MOUNTING

3/16" (.47 cm) thick steel mounting plate (sold separately) is larger, thicker and stronger than any other plate in the industry, and shall include the all-thread studs, nuts, and washers which allows for easy installation to a framed wall. (P-trap and stop require rear access)

### BUBBLER HEAD

Polished chrome-plated brass bubbler head with integral laminar flow prevents splashing while providing a superior flow pattern. The integral 11/16" dia. basin shank and stainless anti-rotation roll pin for vandal resistance strength. Shielded, angled stream opening provides a steady source of drinking water at .45 gpm.

### FOUNTAIN VALVE

The push-button activated valve offers the only all stainless steel valve body that is machined out of solid bar stock, is fully serviceable through the front of the push button assembly offering access to the water control cartridge and integral water supply strainer, and with front access to the water stream height adjustment for easy maintenance without having to remove the valve. Operating pressure range of 30 to 90 psi (2.1 to 6.2 bar).

### VANDAL RESISTANT

The bubbler head, push button, round bowl, drain strainer and bottom plate are locked in place, discouraging unwanted vandal tampering.

## OPTIONS

- Water Filter: Model 6480 filter kit with 3000 gallon carbon block filter, filter head, and mounting bracket.
- Bottle Filler: Model 1920, bottle filler can be a stand-alone station, or mounted above Haws 1001 series drinking fountain models.
- Remote Drinking Fountain Water chiller: Model HCR8, 8 gph (30.3 L) remote water chiller provides instantaneous cooling to meet a continuous demand for chilled water.
- Support Frame: Model 6800 In-wall floor mounted fixture support legs, welded steel 4-bolt floor flanges, and supplied with 'U' bolts and hardware.

For more information, visit [www.hawscow.com](http://www.hawscow.com) or call (888) 640-4297.



## SPECIFICATIONS

Model 1001B wall mounted barrier-free vandal-resistant drinking fountain shall include an 18 gauge Type 304 Stainless Steel satin finish basin with integral swirl design, 14 gauge Type 304 Stainless Steel wall bracket, 3/16" (.47 cm) thick steel in-wall mounting plate, 100% lead-free waterways, vandal-resistant push-button operated stainless steel valve with front-accessible cartridge and flow adjustment, polished chrome-plated brass vandal-resistant bubbler head with integral laminar anti-squirt flow, chrome-plated brass vandal-resistant waste strainer, vandal-resistant bottom plate, and 1-1/4" (3.2 cm) O.D. waste pipe. (P-trap and stop require rear access) In extreme environments related to heat and cold, product(s) must be protected from damage/exposure due to these extreme conditions.

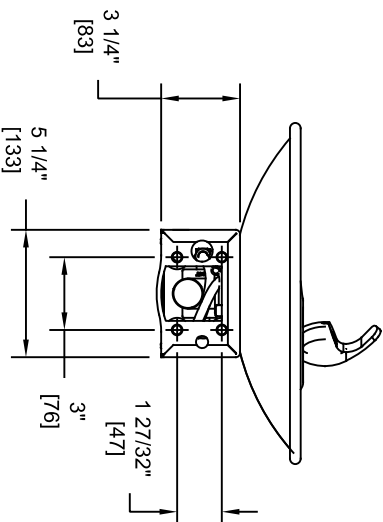
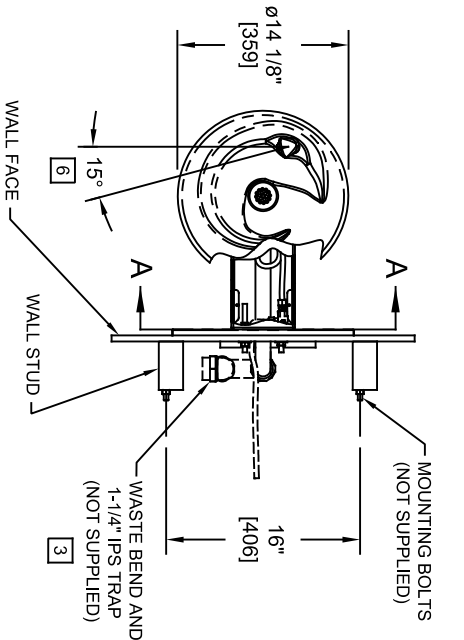
## APPLICATIONS

Perfect for either public or private indoor/outdoor settings, model 1001B is a great fit in areas where aesthetics are important to the overall appeal of the architecture. This series is precisely mounted, making it a nice addition to any surrounding. Beautiful satin finish helps to maintain the fountains overall appeal so it always remains looking as new as it did when it was installed. Specifically, this type of wall mounted drinking fountain may be placed in settings such as: schools and other locations in and around office buildings where the temperature remains above freezing. Model meets all current Federal Regulations for the disabled including those in the Americans with Disabilities Act. Haws manufactures drinking fountains, faucets and electric water coolers to be lead-free by all known definitions including NSF/ANSI/CAN 61- Section 9, NSF/ANSI/CAN 372, California Proposition 65, and the Federal Safe Drinking Water Act. Product is compliant to California Health and Safety Code 116875 (AB 1953-2006), and 116876 (AB 100) "NSF/ANSI/CAN 61: Q ≤ 1".

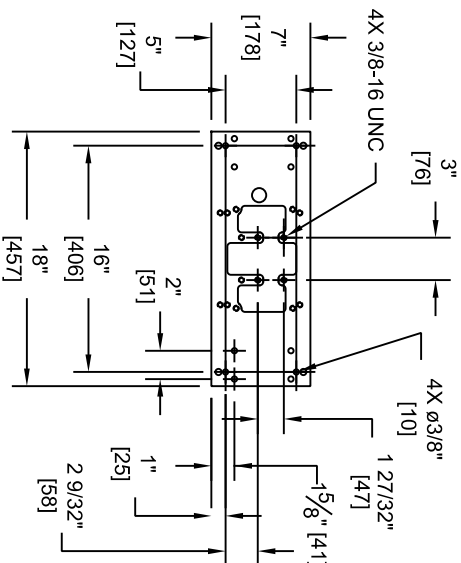
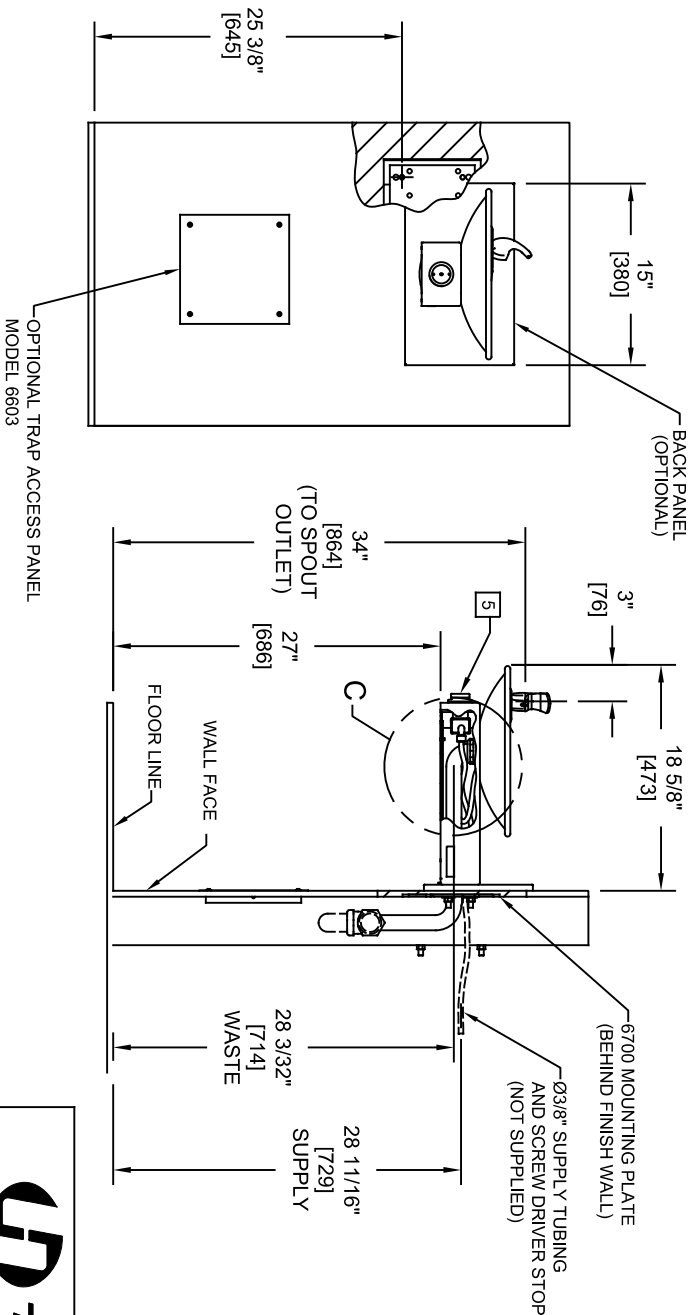
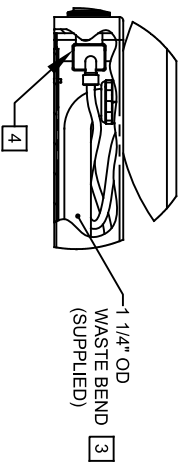



NOTES:

1. HOLD ROUGH-IN DIMENSIONS  $\pm 1/8"$  (3.2mm).
2. WHEN INSTALLING THIS UNIT, LOCAL, STATE, OR FEDERAL CODES SHOULD BE ADHERED TO FOR INSTALLATION DIMENSIONS (LOCATIONS), WASTE AND SUPPLY REQUIREMENTS OTHER THAN SHOWN.
3. INSTALLER MUST PROVIDE TRAP FOR PROPER INSTALLATION.
4. REMOVE VALVE FROM PUSH BUTTON TO INSTALL WASTE ELBOW ONTO BOWL. AFTER WASTE ELBOW IS INSTALLED, REINSTALL VALVE AND ADJUST FLOW.
5. REFER TO 5874 SERIES OPERATION AND MAINTENANCE MANUAL FOR PUSH BUTTON AND VALVE INSTALLATION/MAINTENANCE INSTRUCTIONS.
6. MAXIMUM ADJUSTABLE RANGE IS 15" FROM PARALLEL TO BACK WALL.



DETAIL C





**Haws**  
Since 1906


1456 KLEPPE LANE  
SPARKS, NEVADA 89431  
(775) 359-4712 FAX (775) 359-7424  
E-MAIL: HAWS@HAWS.CO.COM  
WEBSITE: WWW.HAWS.CO.COM

ECN NO. REVISED PERBY: MODEL(S)  
DRAWN: ECN 6125 FV  
RTM DATE: CHKD.  
APPROVED: DATE: 10/22/24 SCALE: 1:1 DRAWING TYPE: INSTALLATION SHEET 1 OF 1

1001  
PART NUMBER  
0002076304.D  
REVISION: 24

6700 INDEX

INSTALLATION WITH:	TYPICAL USES	SEE SHEET ...
GENERAL INSTALLATION	IMPORTANT INFORMATION FOR ALL INSTALLATIONS	3 OF 6
1001 BOWLS	HAWS SERIES 1001X, 1001.8X	3 OF 6
1107 BOWLS	HAWS SERIES 1107X, 1107.8X	3 OF 6
1109 BOWLS	HAWS SERIES 1109X, 1109.8X	3 OF 6
1047 BOWLS	HAWS SERIES 1047	4 OF 6
1011 BOWLS	HAWS SERIES 1011X, 1011.8X	4 OF 6
1119 BOWLS	HAWS SERIES 1119X, 1119.8X	4 OF 6
1117 BOWLS	HAWS SERIES 1117X, 1117.8X	5 OF 6
1311 BOWLS	HAWS SERIES 1311	5 OF 6
1501 BOWLS	HAWS SERIES 1501	5 OF 6
CHILD HEIGHT	HAWS 1107PCH, 1109PCH, 1311PCH	6 OF 6



**Haws®**

Since 1906

1455 KLEPPE LANE  
SPARKS, NEVADA 89431  
(775) 359-4712 FAX (775) 359-7424  
E-MAIL: HAWS@HAWSCO.COM  
WEBSITE: WWW.HAWSCO.COM

ECN NO. REVISED PER BY:

ECN: 6148 JG

DATE: 10/03/24 JG

CHK'D:

MODEL(S)

67/00

PART NUMBER  
0002080016

APPROVED: FV

DATE: 02/11/25

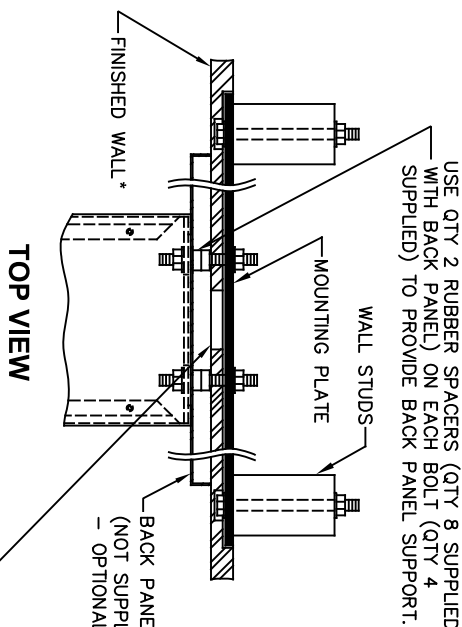
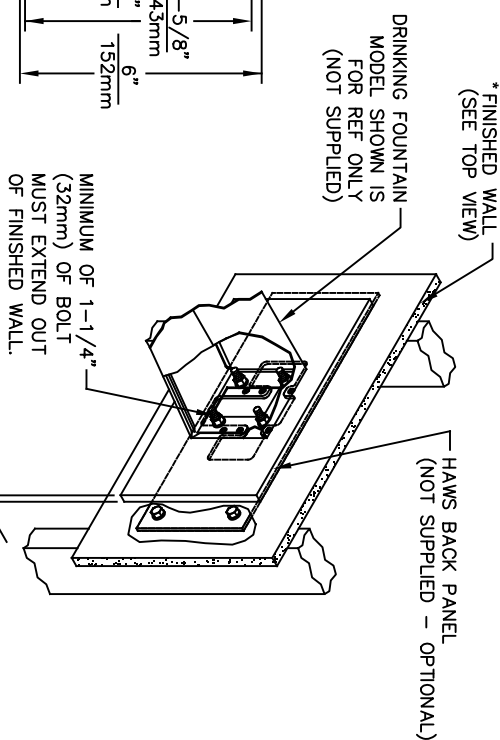
SCALE: N/A

DRAWING TYPE:

INSTALLATION

SIZE: A

SHEET 1 OF 6



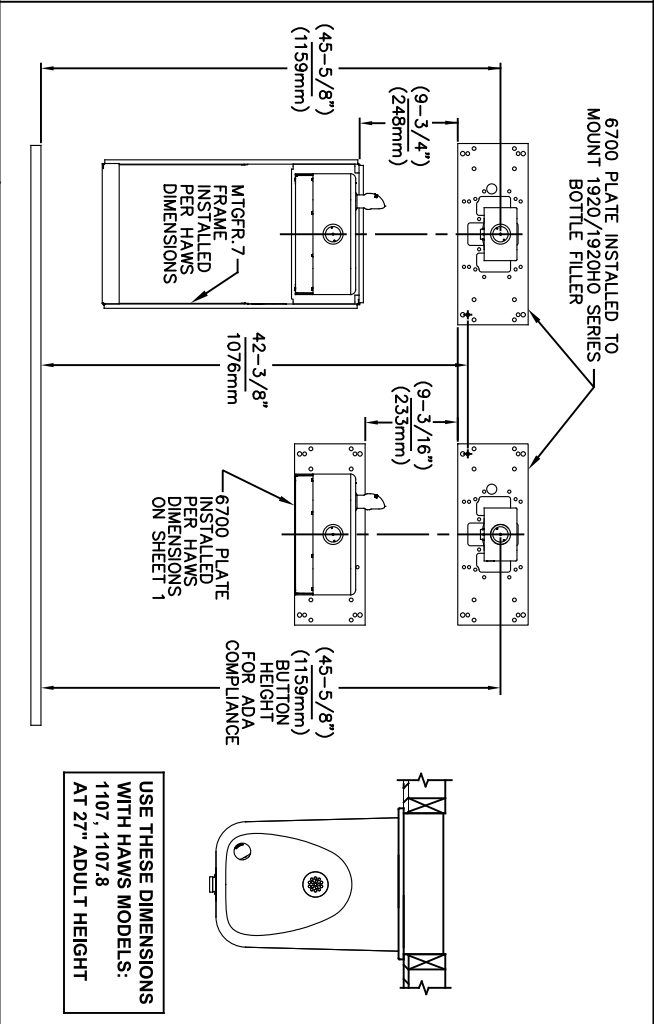
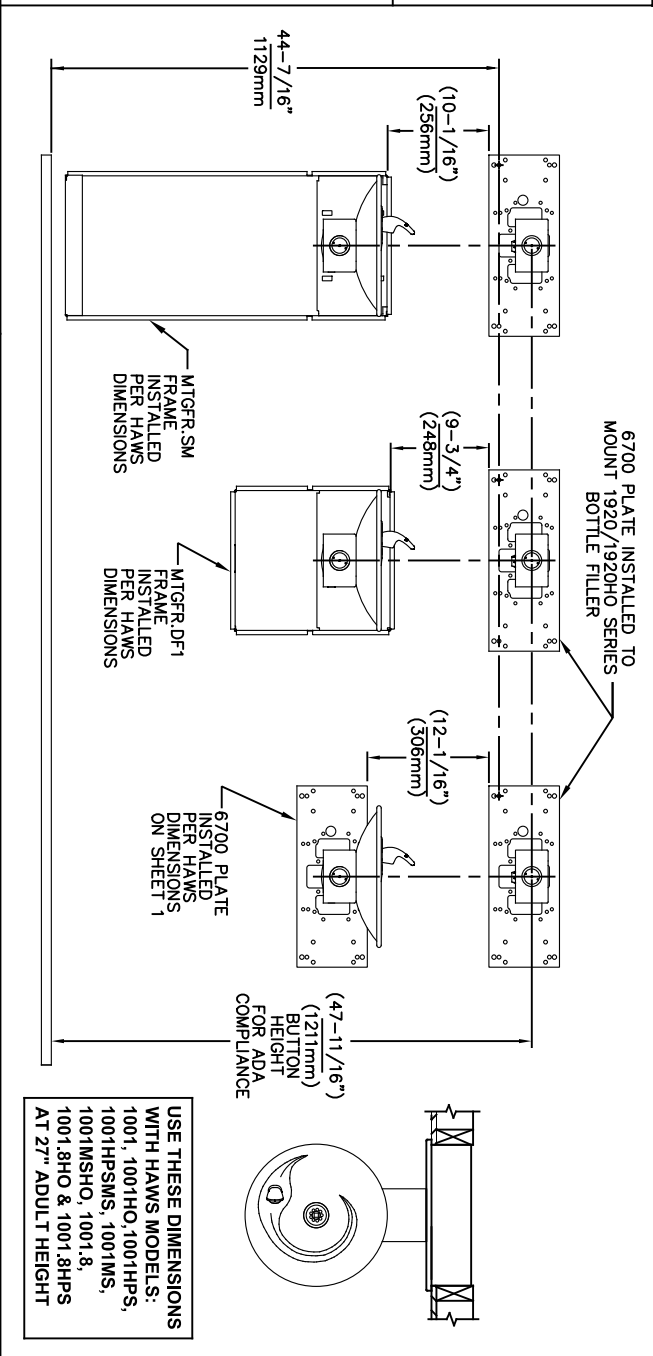
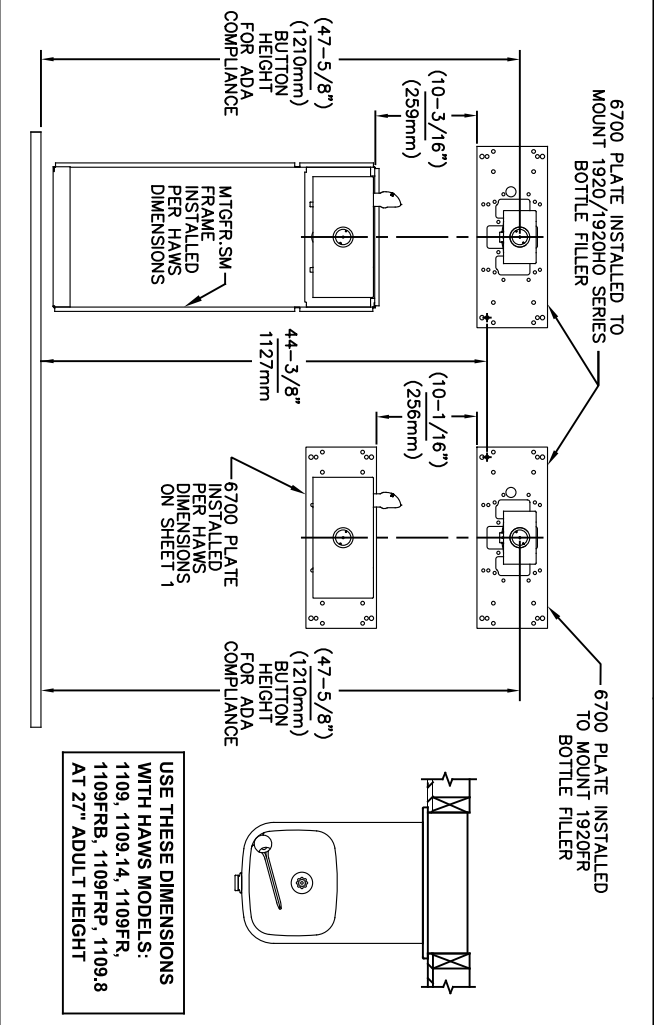
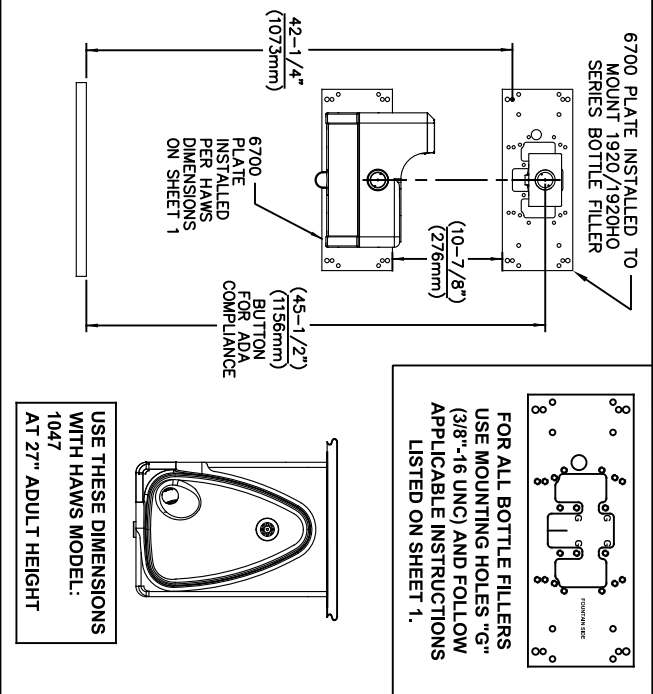
DRINKING FOUNTAIN (ONLY AT 27" ADULT HEIGHT) (SEE SPECIFIC MODEL Q&A'S FOR OTHER HEIGHTS)		
MODEL	USE BOWL MT'G. HOLE PATTERN	USE "X" DIM. BELOW TO POSITION MOUNTING PLATE HOLE "X"
1001	"G"	25-3/8" [645mm]
1025	"D"	28-1/8" [714mm]
1047	"E"	24-3/8" [619mm]
1105	"H"	34-5/16" [872mm]
1107	"F"	26-3/16" [665mm]
1109	"H"	27-5/16" [694mm]
1109.14	"H"	27-5/16" [694mm]
1109FR	"H"	27-5/16" [694mm]
1311	"E"	26-3/4" [679mm]
WASTE Drip TRAY (ONLY AT 27" ADULT HEIGHT)		
6468	"G"	25-3/8" [645mm]
1922	"G"	25-3/8" [645mm]

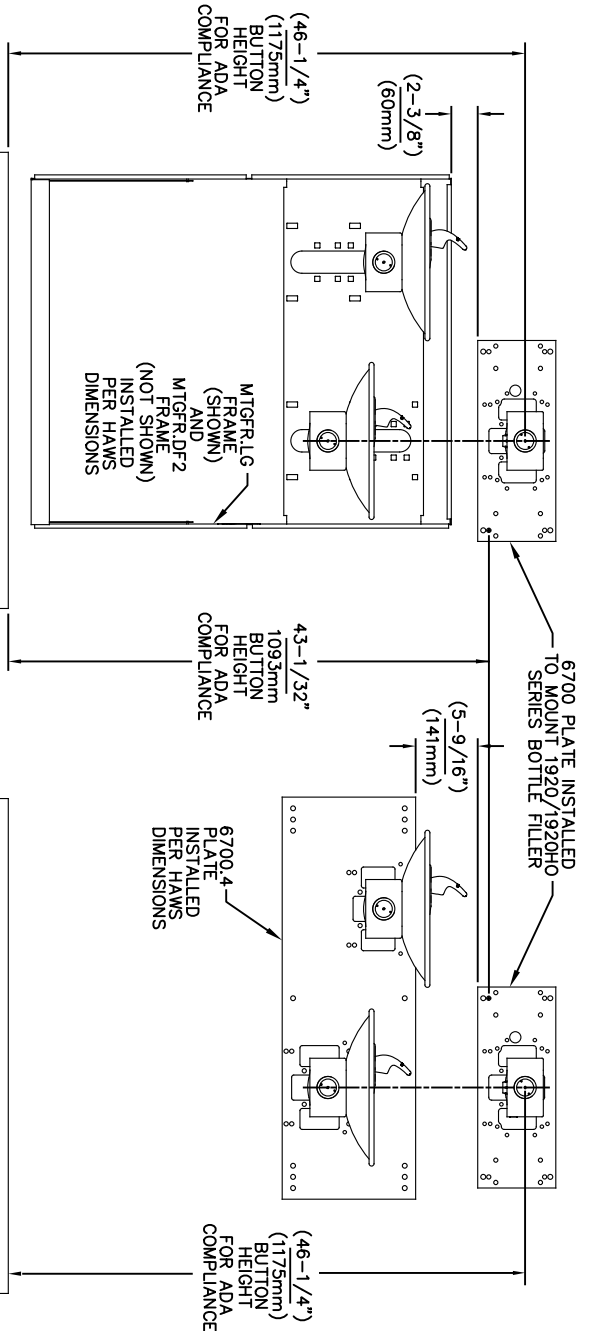
• FINISH WALL OVER MOUNTING PLATE AND BEHIND BACK PANEL. MAKE SURE THAT FINISHED WALL EXTENDS WITHIN THE BRACKET/BOWL MOUNTING HOLES (TO PROVIDE SURFACE AREA FOR RUBBER SPACERS TO CONTACT).

REGARDING CONCRETE/MASONRY WALL MOUNTING: DO NOT SECURE MOUNTING PLATE TO SAME SIDE OF WALL AS FOUNTAIN. AVOID COMPROMISING INTEGRITY OF WALL WHEN ANCHORING FOUNTAIN. IT IS RECOMMENDED THAT INSTALLER CALL TECHNICAL SUPPORT IF THERE ARE ANY QUESTIONS AS TO HOW TO OBTAIN A PROPER ANCHOR IN CONCRETE/MASONRY WALLS. 1-800-766-5612

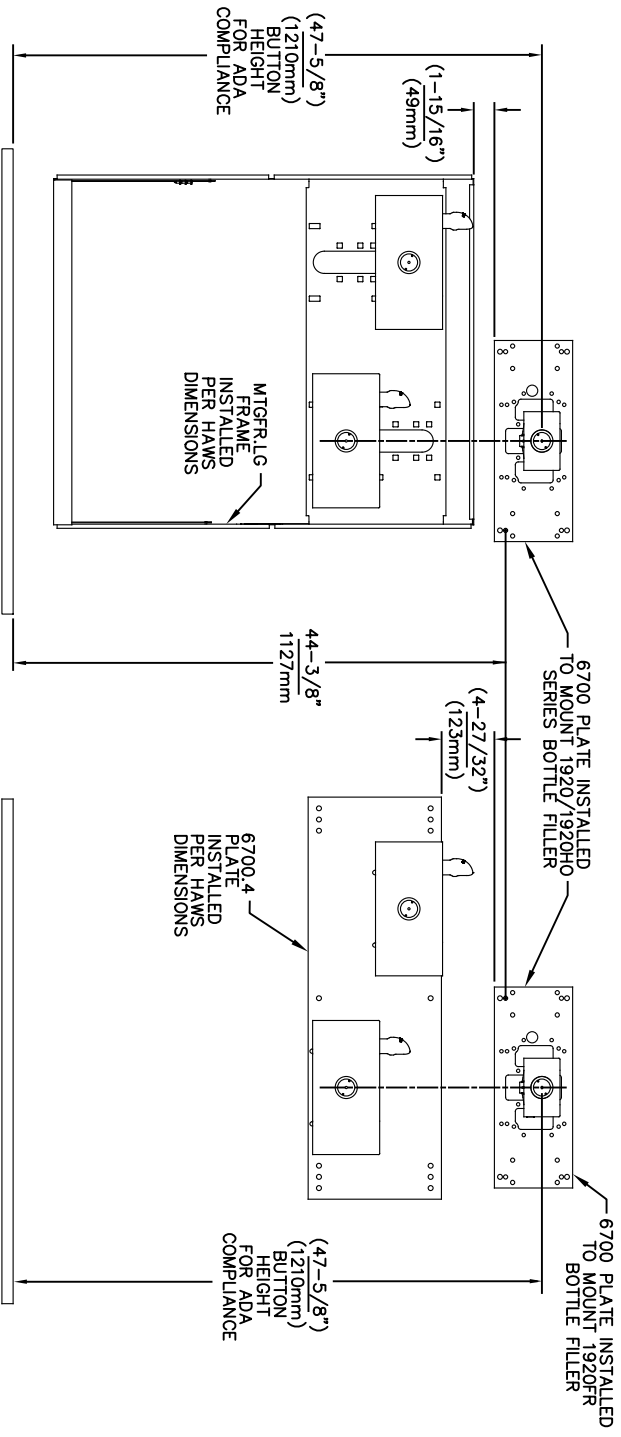
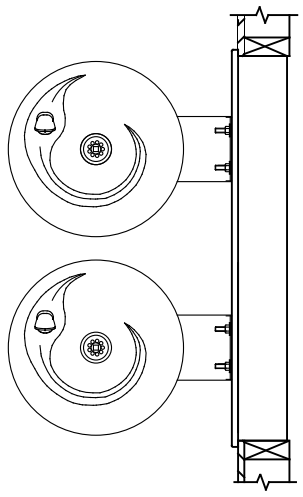


ECON NO. REVISED PERMY:		MODEL(S)		PART NUMBER	
ECON 6148 JG		6700		0002080016	
DRAWN: DATE: CHK'D:				REVISION	
C/L 09-03-03 JG				26	
APPROVED: DATE:					
F/V 02/11/25					
SCALE: N/A		DRAWING TYPE:		SIZE: A	
				SHEET 2 OF 6	

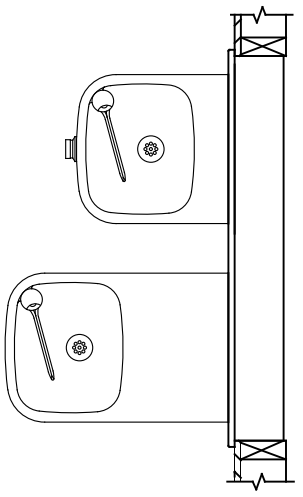




**USE THESE MOUNTING DIMENSIONS IF INSTALLING OVER HAWS FOUNTAIN**  
MODEL: 1011, 1011HO, 1011HO2, 1011HPS, 1011HPSHO, 1011HPSHO2, 1011HPSMS, 1011HMS, 1011MSHO, 1011MSHO2, 1011.8, 1011.8HO, 1011.8HO2 & 1011.8HPSM AT 27" ADULT HEIGHT  
**INSTALL THE 6700 ABOVE THE FOUNTAIN MOUNTING PLATE OR FRAME AT THE DIMENSION SHOWN FOR CORRECT BACKPANEL SPACING**  
**BACK PANELS FOR BOTTLE FILLERS (NOT SUPPLIED - OPTIONAL) ARE NOT SHOWN FOR CLARITY.**




**USE THESE MOUNTING DIMENSIONS IF INSTALLING OVER HAWS FOUNTAIN**  
MODEL: 1119, 1119.14, 1119.14HO, 1119.14HO2, 1119FR, 1119FRB, 1119FRP, 1119HO, 1119HO2 & 1119.8 AT 27" ADULT HEIGHT  
**INSTALL THE 6700 ABOVE THE FOUNTAIN MOUNTING PLATE OR FRAME AT THE DIMENSION SHOWN FOR CORRECT BACKPANEL SPACING**  
**BACK PANELS FOR BOTTLE FILLERS (NOT SUPPLIED - OPTIONAL) ARE NOT SHOWN FOR CLARITY.**



- NOTES:
1. WHEN INSTALLING THIS UNIT, LOCAL, STATE OR FEDERAL CODES SHOULD BE ADHERED TO.
  2. BACK PANELS (OPTIONAL) NOT SHOWN FOR CLARITY.

**6700 MOUNTING PLATE**  
**FOR USE WITH BOTTLE FILLER**  
**(SEE SHEET 1 FOR USE WITH**  
**DRINKING FOUNTAINS)**



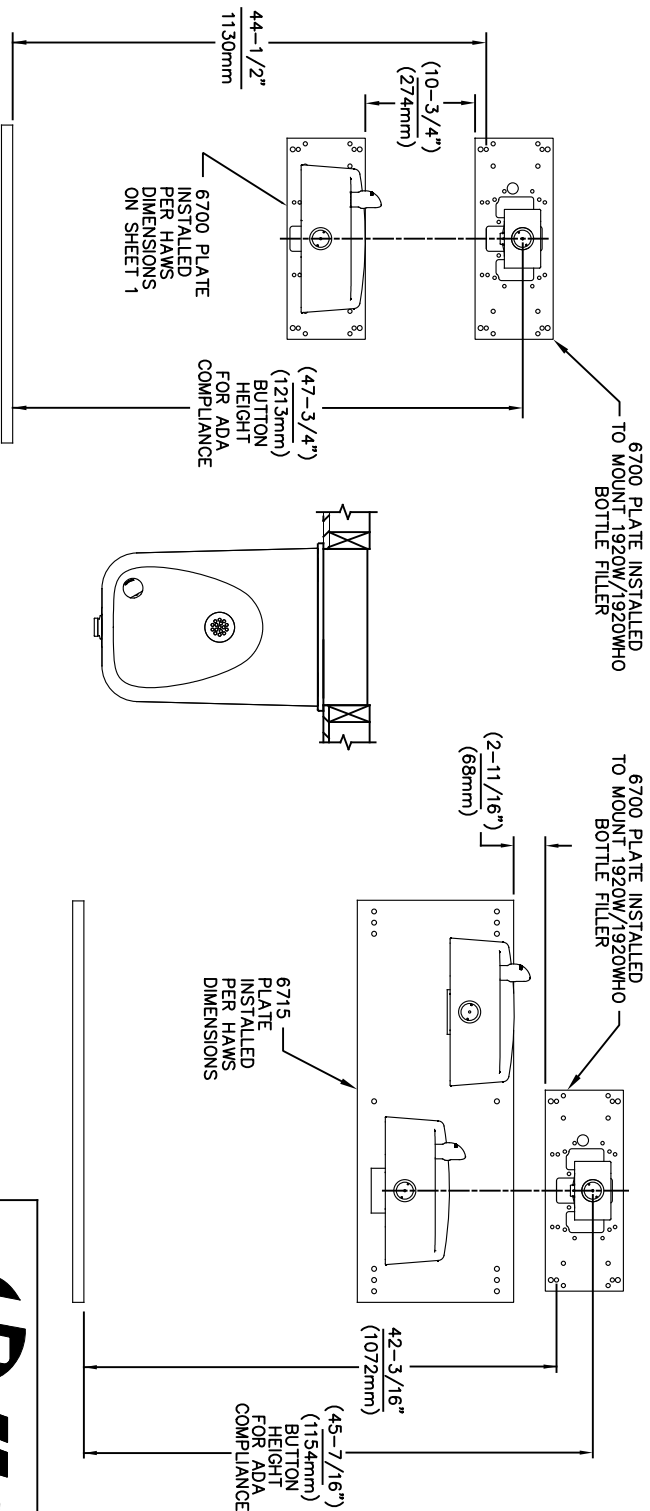
**Since 1906**

1456 KLEPPE LANE  
SPARKS, NEVADA 89431  
(775) 359-4712 FAX (775) 359-7424  
E-MAIL: HAWS@HAWS.CO.COM  
WEBSITE: WWW.HAWS.CO.COM

ECN NO. REVISED PERBY: MODEL(S)  
5550 ECN 6148 JG  
DRAWN: DATE: CHKD: JG  
FV 05/14/20 JG  
APPROVED: DATE: 02/11/25  
SCALE: 1:13 DRAWING TYPE: INSTALLATION SIZE: A SHEET: 4 OF 6

PART NUMBER  
0002080016  
REVISION:  
26

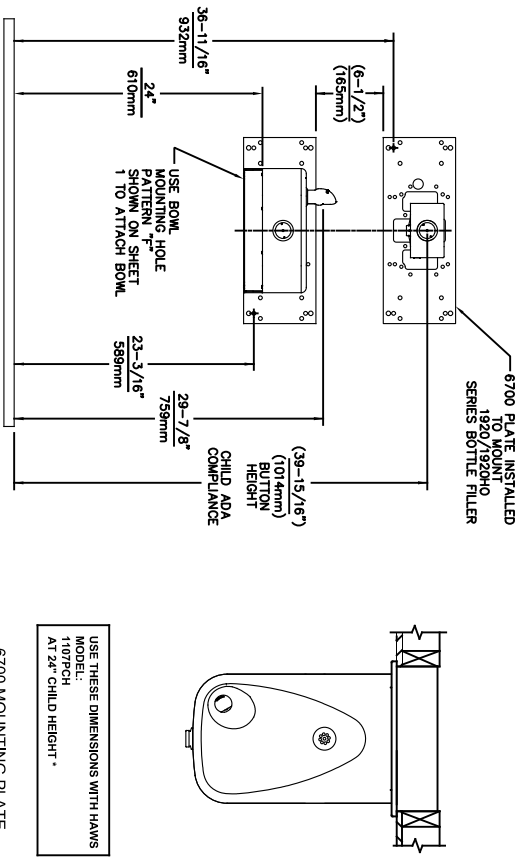
This technical drawing shows a vertical double door assembly. The door is divided into two main rectangular panels, each featuring a large, rounded, teardrop-shaped handle on the left side. A central vertical lock mechanism is positioned between the two panels, consisting of a long, narrow vertical bar with a handle at the top and a locking bolt at the bottom. The drawing includes various mechanical details such as hinges, bolts, and a small circular lock cylinder on the right side of the upper panel.



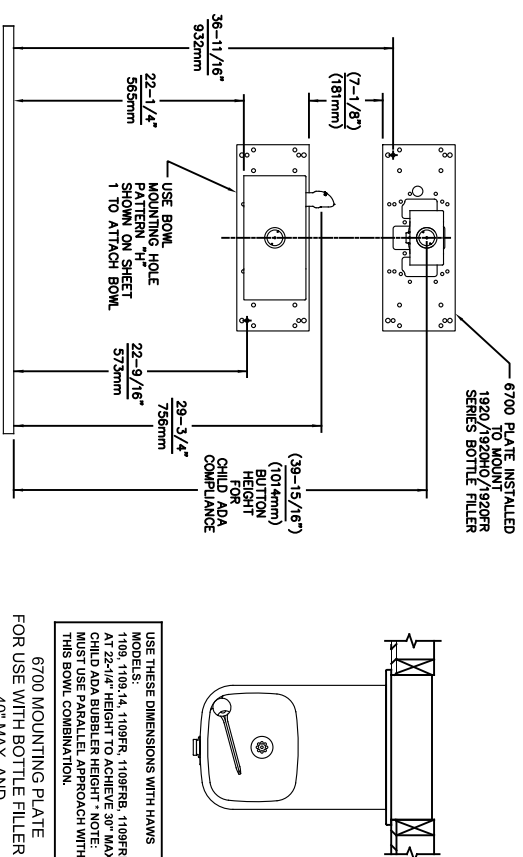
USE THESE MOUNTING DIMENSIONS IF  
INSTALLING OVER HAWS FOUNTAIN  
MODEL: 1311, 1501  
AT 27" ADULT HEIGHT  
INSTALL THE 6700 ABOVE THE  
FOUNTAIN MOUNTING PLATE AT  
THE DIMENSION SHOWN FOR CORRECT  
BACKPANEL SPACING (IF APPLICABLE).  
BACK PANEL - BOTTLE FILLER  
(NOT SUPPLIED - OPTIONAL) IS NOT  
SHOWN FOR CLARITY.

6700 MOUNTING PLATE  
FOR USE WITH BOTTLE FILLER  
(SEE SHEET 1 FOR USE WITH  
DRINKING FOUNTAINS)

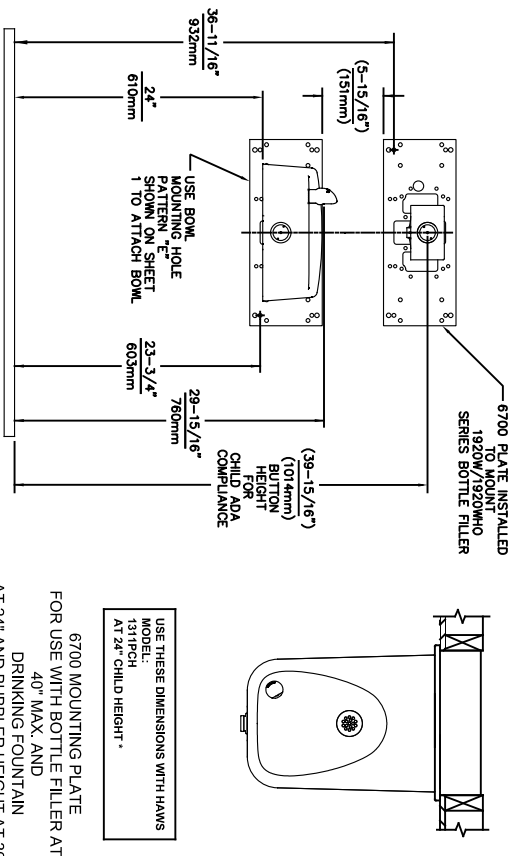
©2025 Haws Corporation - All Rights Reserved. HAWS® and other trademarks used in these materials are the exclusive property of Haws Corporation.



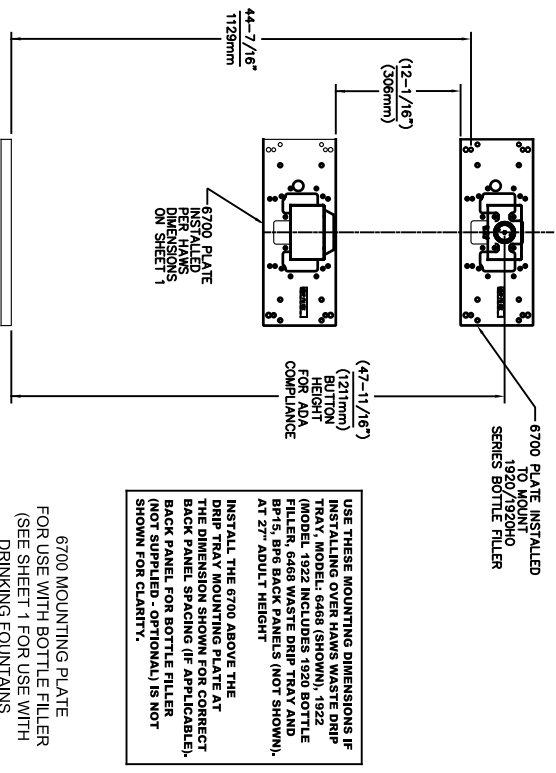
6700 MOUNTING PLATE  
FOR USE WITH BOTTLE FILLER AT  
40\" MAX. AND  
DRINKING FOUNTAIN  
AT 24\" AND BUBBLER HEIGHT AT 30\"  
MAX. FOR CHILD ADA HEIGHT  
(SEE SHEETS 1 & 2 FOR USE WITH  
DRINKING FOUNTAIN AT 27\" ADULT  
HEIGHT DIMENSIONS)



6700 MOUNTING PLATE  
FOR USE WITH BOTTLE FILLER AT  
40\" MAX. AND  
DRINKING FOUNTAIN  
BUBBLER HEIGHT AT 30\" MAX.  
FOR CHILD ADA HEIGHT  
MUST USE PARALLEL APPROACH  
WITH THIS BOWL COMBINATION  
(SEE SHEETS 1 & 2 FOR USE WITH  
DRINKING FOUNTAIN AT 27\" ADULT  
HEIGHT DIMENSIONS)



6700 MOUNTING PLATE  
FOR USE WITH BOTTLE FILLER AT  
40\" MAX. AND  
DRINKING FOUNTAIN  
AT 24\" AND BUBBLER HEIGHT AT 30\"  
MAX. FOR CHILD ADA HEIGHT  
(SEE SHEETS 1 & 4 FOR USE WITH  
DRINKING FOUNTAIN AT 27\" ADULT  
HEIGHT DIMENSIONS)



6700 MOUNTING PLATE  
FOR USE WITH BOTTLE FILLER  
(SEE SHEET 1 FOR USE WITH  
DRINKING FOUNTAINS  
AND WASTE DRIP TRAY)



Since 1906

1456 KLEPPE LANE  
SPARKS, NEVADA 89431  
(775) 359-4712 FAX (775) 359-7424  
E-MAIL: HAWS@HAWS.CO.COM  
WEBSITE: WWW.HAWS.CO.COM

ECN NO. REVISED PERBY: MODEL(S)  
5893 1 ECN: 6148 JG  
DRAWN: DATE: CHKD:  
FV 07/26/23 JG  
APPROVED: DATE: SCALE: 1:13 DRAWING TYPE: INSTALLATION SHEET A OF 6  
6700 PART NUMBER 0002080016 REVISION 26