

FEATURES & BENEFITS

CONSTRUCTION

Heavy-duty cast iron bowl with a glossy white enamel finish is designed for the toughest of applications, and at the same time is gentle to all users with its soft rounded corners. Unit also ships with vandal-resistant bottom plates to provide added peace of mind.

BUBBLER HEAD

Polished chrome-plated brass bubbler head with integral 11/16" dia. basin shank and stainless anti-rotation roll pin for vandal resistance strength. Shielded, angled stream opening provides a steady, sanitary source of drinking water at .45 gpm.

FOUNTAIN VALVE

The push-button activated valve offers the only all stainless steel valve body that is machined out of solid bar stock, is fully serviceable through the front of the push button assembly offering access to the water control cartridge and integral water supply strainer, and with front access to the water stream height adjustment for easy maintenance without having to remove the valve. Operating pressure range of 30 to 90 psi (2.1 to 6.2 bar).

VANDAL RESISTANT

The bubbler head, push button, drain strainer and bottom plate are locked in place, discouraging unwanted vandal tampering.

INTEGRATED TRAP

All cast brass 1-1/4" NPT adjustable trap completely concealed inside bottom plate for easy installation and access.



SPECIFICATIONS

Model 1311B vandal-resistant wall-mounted barrier-free drinking fountain shall include a white enameled-iron basin, 3/16" (.47 cm) thick steel in-wall mounting plate, vandal-resistant push-button operated stainless steel valve with front-accessible cartridge and flow adjustment, adult or child ADA mounting heights, 100% lead-free waterways, polished chrome-plated brass vandal-resistant bubbler head, polished chrome-plated brass vandal-resistant waste strainer, vandal-resistant bottom plate, and chrome-plated 1-1/4" NPT trap. In extreme environments related to heat and cold, product(s) must be protected from damage/exposure due to these extreme conditions.

OPTIONS

- Bottle filler: Model 1920W, bottle filler can be a stand-alone station, or mounted above Haws 1311 and 1501 and other drinking fountain models.
- Water Filter: Model 6480 filter kit with 3000 gallon carbon block filter, filter head, and mounting bracket.
- Support Frame: Model 6800 In-wall floor mounted fixture support legs, welded steel 4-bolt floor flanges, and supplied with 'U' bolts and hardware.

For more information, visit www.hawscos.com or call (888) 640-4297.

APPLICATIONS

Perfect for either public or private settings, our gleaming white enameled iron series is one of the sturdiest wall mounted fountains Haws produces. This series is precisely mounted, making it a nice addition to any surrounding. Elegant gloss finish and color consistency throughout the enameled iron maintain the fountains overall appeal so it always remains looking as new as it did when it was installed. Specifically, this type of wall mounted drinking fountain may be placed in settings such as: parks, schools, and other indoor/outdoor environments where the temperature remains above freezing. Model meets all current Federal Regulations for the disabled including those in the Americans with Disabilities Act. Haws manufactures drinking fountains, faucets and electric water coolers to be lead-free by all known definitions including NSF/ANSI/CAN 61-Section 9, NSF/ANSI/ CAN 372, California Proposition 65, and the Federal Safe Drinking Water Act. Product is compliant to California Health and Safety Code 116875 (AB 1953-2006), and 116876 (AB 100) "NSF/ANSI/CAN 61: Q ≤ 1".



NOTES:

1. HOLD ROUGH-IN DIMENSIONS ± 1/4" (6.4MM).
2. WHEN INSTALLING THIS UNIT, LOCAL, STATE, OR FEDERAL CODES SHOULD BE ADHERED TO. FOR INSTALATION HEIGHTS OTHER THAN SHOWN, DIMENSIONS MARKED (*) MUST BE ADJUSTED ACCORDINGLY.
3. REFER TO 5874 SERIES VALVE OPERATION AND MAINTENANCE MANUAL FOR PUSH BUTTON AND VALVE INSTALLATION/MAINTENANCE INSTRUCTIONS.

4. ROUGH IN DIMENSIONS FOR FOUNTAIN HEIGHTS:

CHILD WHEELCHAIR HEIGHT

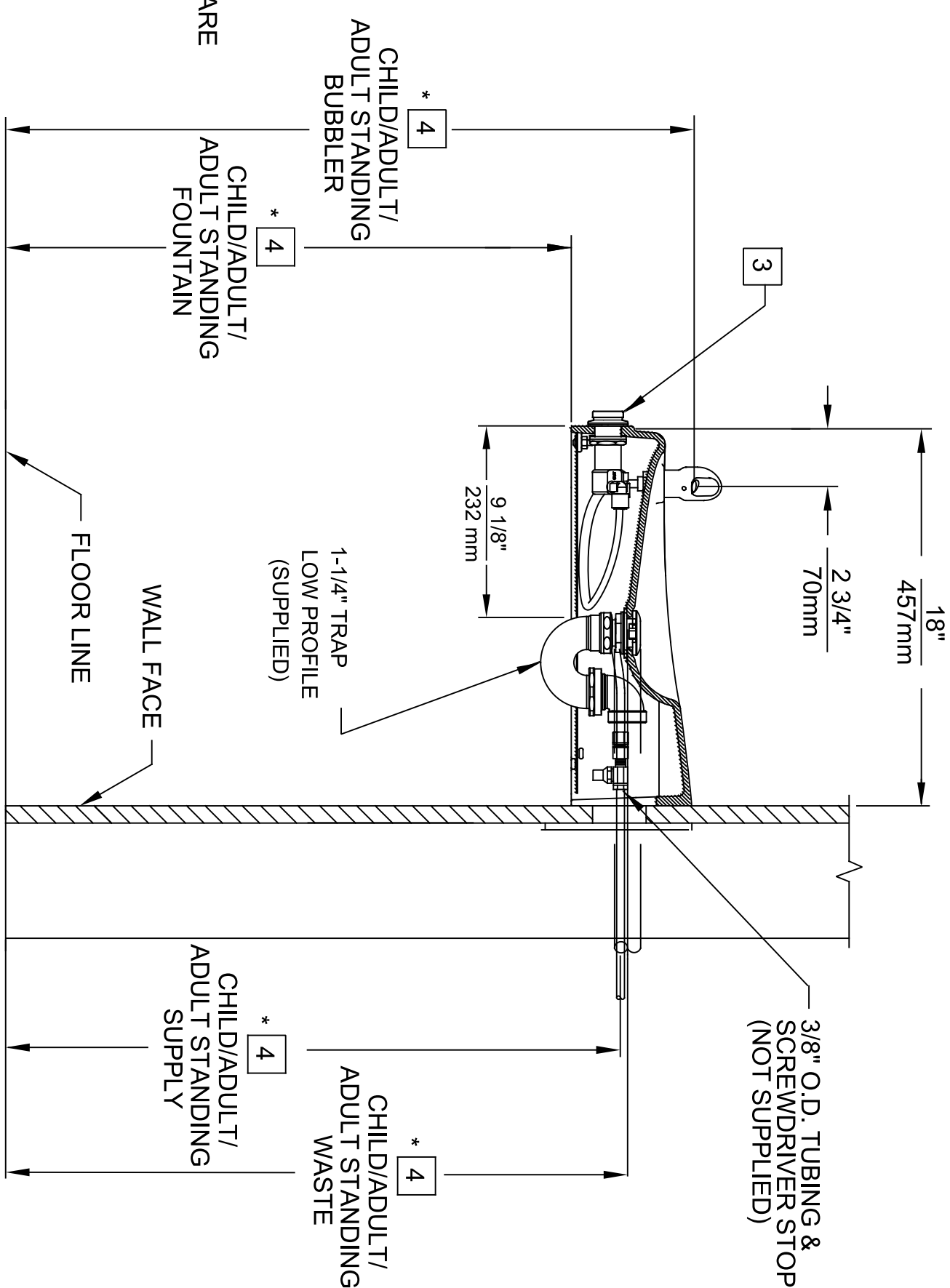
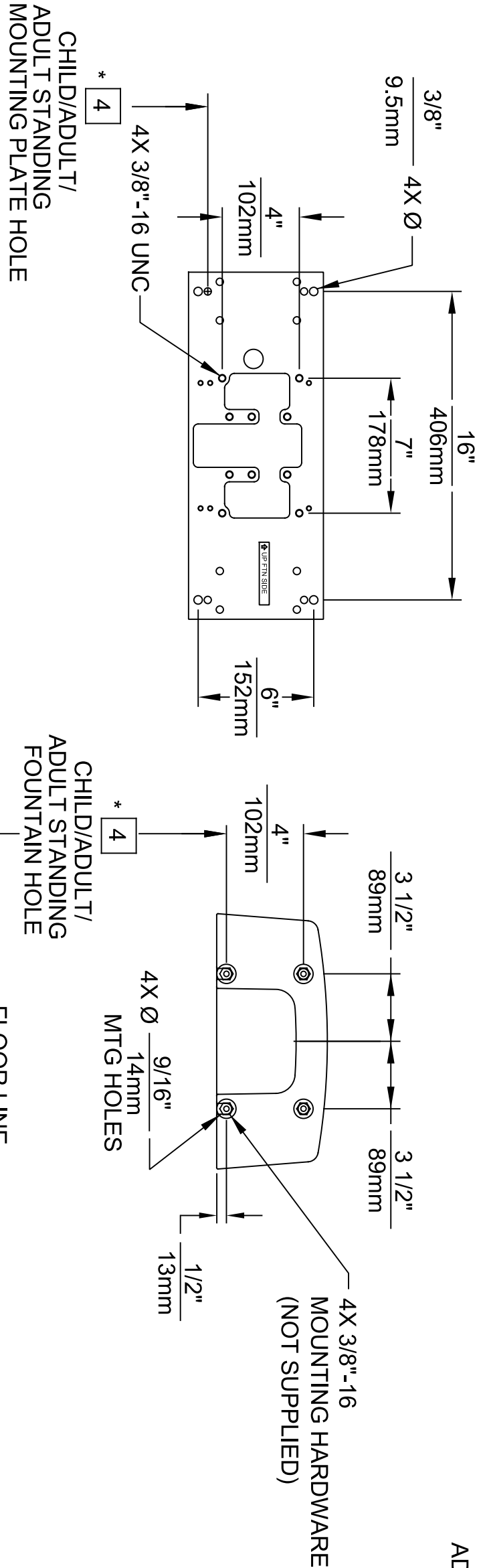
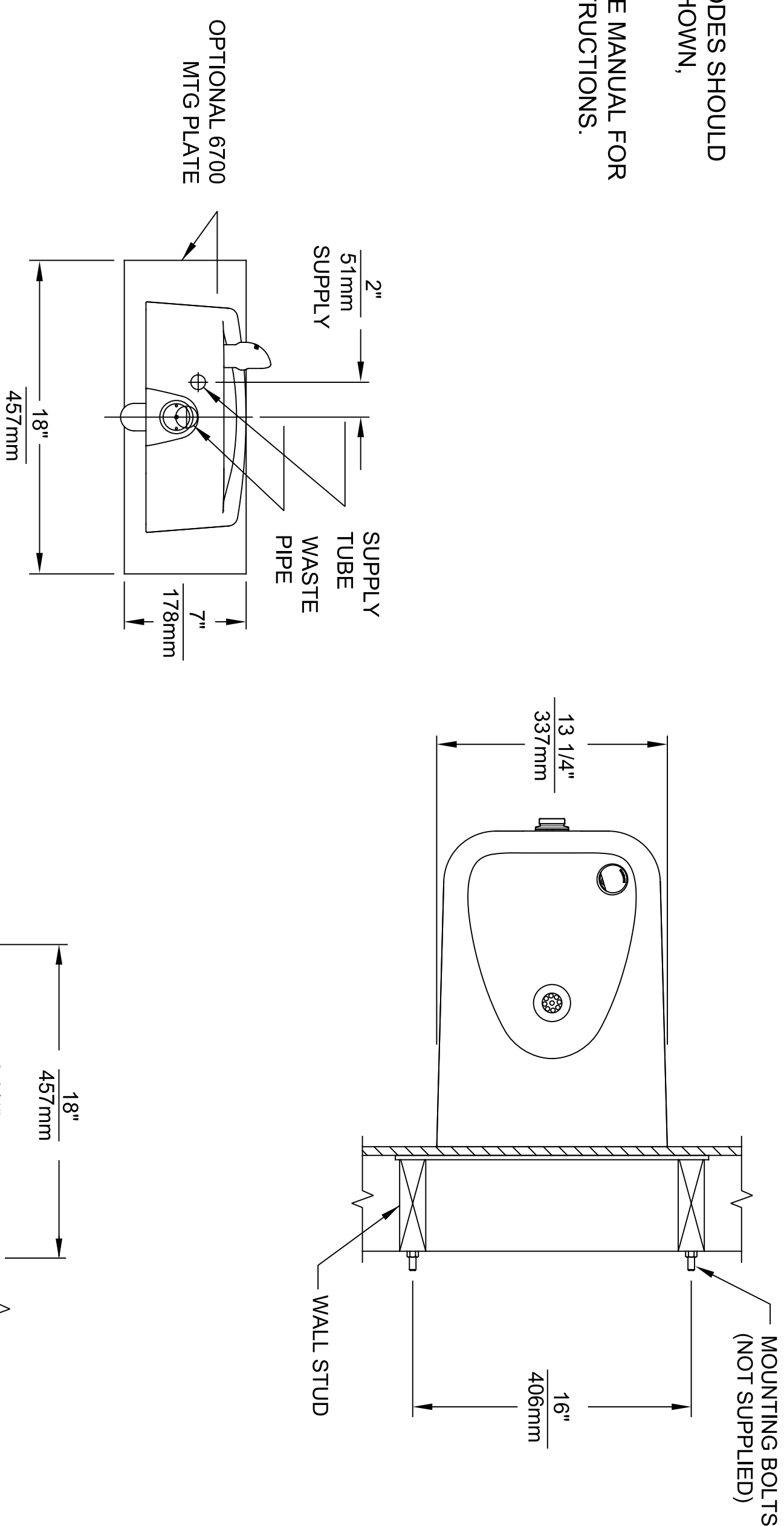
- WASTE: 26-3/8" (670mm)
- SUPPLY: 26" (660mm)
- ** FOUNTAIN (ONLY) HOLE: 24-1/2" (622mm)
- *** MOUNTING PLATE HOLE: 23-3/4" (603mm)
- FOUNTAIN: 24" (610mm)
- BUBBLER: 29-3/4" (756mm)

ADULT WHEELCHAIR HEIGHT

- WASTE: 29-3/8" (746mm)
- SUPPLY: 29" (737mm)
- ** FOUNTAIN (ONLY) HOLE: 27-1/2" (699mm)
- *** MOUNTING PLATE HOLE: 26-3/4" (679mm)
- FOUNTAIN: 27" (686mm)
- BUBBLER: 32-3/4" (832mm)

STANDING ADULT HEIGHT

- WASTE: 34-7/8" (886mm)
- SUPPLY: 34-1/2" (876mm)
- ** FOUNTAIN (ONLY) HOLE: 33" (838mm)
- *** MOUNTING PLATE HOLE: 32-1/4" (819mm)
- FOUNTAIN: 32-1/2" (826mm)
- BUBBLER: 38-1/4" (972mm)



MOUNTING PLATE
FOR USE WITH OPTIONAL
MOUNTING PLATE MODEL 6700

MOUNTING DETAIL
FOR USE WITHOUT OPTIONAL
MOUNTING PLATE MODEL 6700



1455 KLEPPE LANE
SPARKS, NEVADA 89431
(775) 359-4712 FAX (775) 359-7424
E-MAIL: HAWSCO@HAWSCO.COM
WEBSITE: WWW.HAWSCO.COM

ECN NO. | REVISED PER BY: | MODEL(S)
5010 | ECN: 6234 | JG |
DRAWN: | DATE: | CHK'D: |
HM | 08/29/15 | JG |
APPROVED: | DATE: |
RH | 04/22/25 |


1311

PART NUMBER
0510000046.D
REVISION
5

SCALE: 1:14 | DRAWING TYPE: | INSTALLATION | SIZE: A | SHEET 1 OF 1

6700 INDEX

INSTALLATION WITH:	TYPICAL USES	SEE SHEET ...
GENERAL INSTALLATION	IMPORTANT INFORMATION FOR ALL INSTALLATIONS	3 OF 6
1001 BOWLS	HAWS SERIES 1001X, 1001.8X	3 OF 6
1107 BOWLS	HAWS SERIES 1107X, 1107.8X	3 OF 6
1109 BOWLS	HAWS SERIES 1109X, 1109.8X	3 OF 6
1047 BOWLS	HAWS SERIES 1047	4 OF 6
1011 BOWLS	HAWS SERIES 1011X, 1011.8X	4 OF 6
1119 BOWLS	HAWS SERIES 1119X, 1119.8X	4 OF 6
1117 BOWLS	HAWS SERIES 1117X, 1117.8X	5 OF 6
1311 BOWLS	HAWS SERIES 1311	5 OF 6
1501 BOWLS	HAWS SERIES 1501	5 OF 6
CHILD HEIGHT	HAWS 1107PCH, 1109PCH, 1311PCH	6 OF 6



Haws

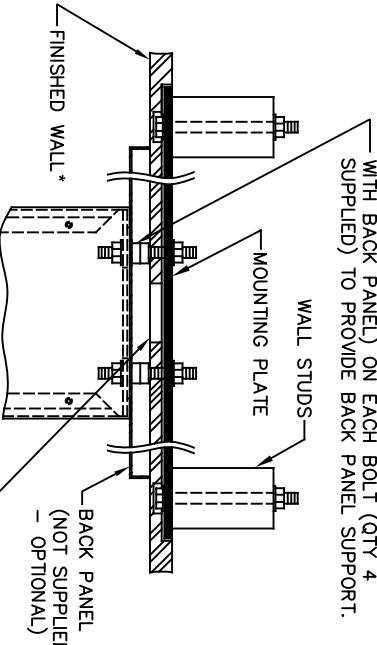
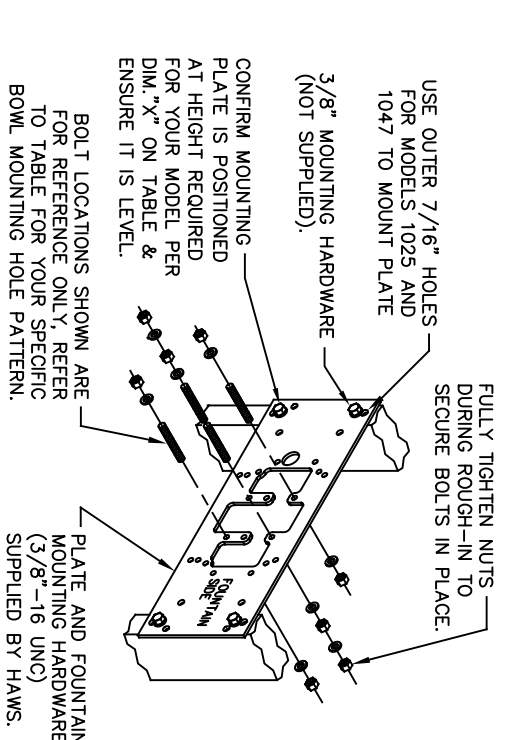
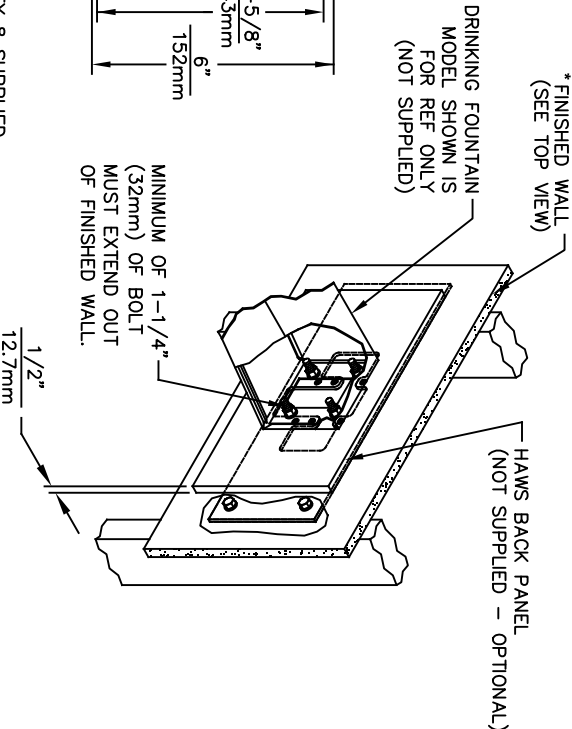
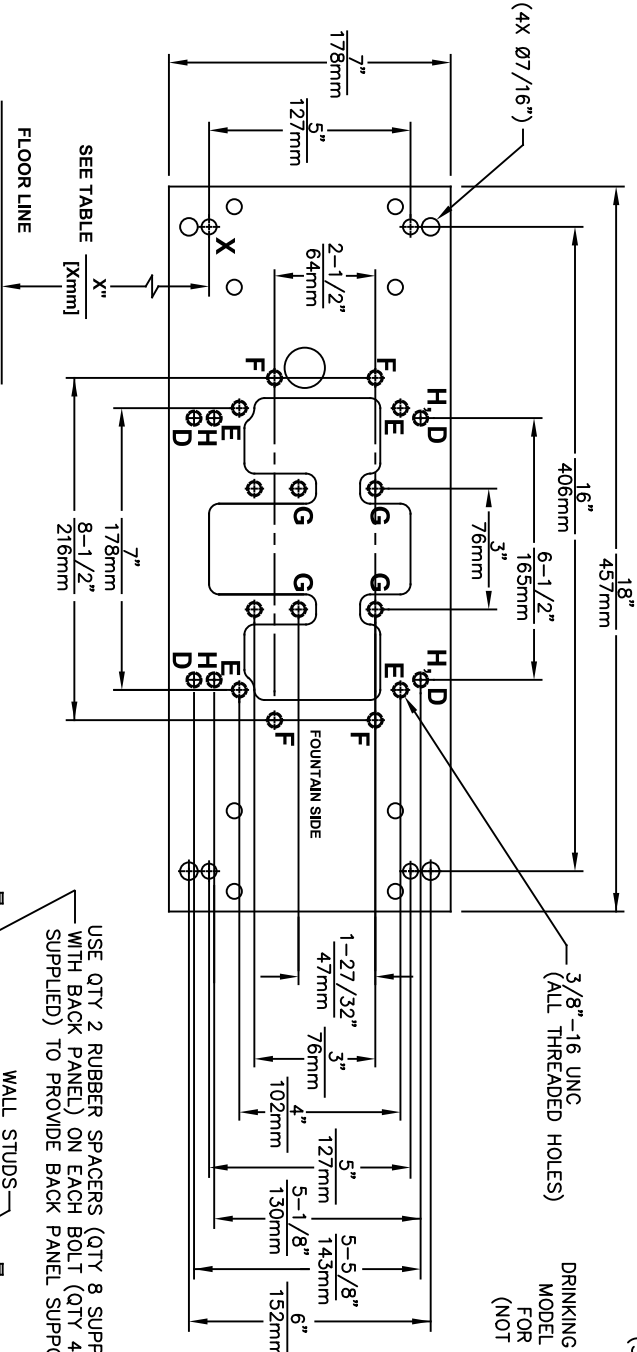
Since 1906

1455 KLEPPE LANE
SPARKS, NEVADA 89431
(775) 359-4712 FAX (775) 359-7424
E-MAIL: HAWS@HAWS.CO.COM
WEBSITE: WWW.HAWS.CO.COM

ECN NO. REVISED PER BY: JG
DRAWN: JG
DATE: 10/03/24
APPROVED: JG

MODEL(S)
67/00

PART NUMBER
0002080016
REVISION
26




DRINKING FOUNTAIN (ONLY) AT 27" ADULT HEIGHT (SEE SPECIFIC MODEL O&M'S FOR OTHER HEIGHTS)			
MODEL	USE BOWL MTG. HOLE PATTERN	USE "X" DIM. BELOW TO POSITION MOUNTING PLATE HOLE "X"	
1001	"G"	25-3/8" [645mm]	
1025	"D"	28-1/8" [714mm]	
1047	"E"	24-3/8" [619mm]	
1105	"H"	34-5/16" [872mm]	
1107	"F"	26-3/16" [665mm]	
1109	"H"	27-5/16" [694mm]	
1109.14	"H"	27-5/16" [694mm]	
1109FR	"H"	27-5/16" [694mm]	
1311	"E"	26-3/4" [679mm]	
WASTE DRIP TRAY (ONLY) AT 27" ADULT HEIGHT			
6468	"G"	25-3/8" [645mm]	
1922	"G"	25-3/8" [645mm]	

6700 MOUNTING PLATE
FOR USE WITH
DRINKING FOUNTAINS
AND WASTE DRIP TRAYS
AT 27" ADULT HEIGHT
(SEE SHEETS 2 - 5 FOR USE WITH
BOTTLE FILLER 1920/1920HO SERIES
AND CHILD HEIGHT APPLICATIONS)

***FINISH WALL OVER MOUNTING PLATE AND BEHIND BACK PANEL. MAKE SURE THAT FINISHED WALL EXTENDS WITHIN THE BRACKET/BOWL MOUNTING HOLES (TO PROVIDE SURFACE AREA FOR RUBBER SPACERS TO CONTACT).**

CAUTION

REGARDING CONCRETE/MASONRY WALL MOUNTING: DO NOT SECURE MOUNTING PLATE TO SAME SIDE OF WALL AS FOUNTAIN. AVOID COMPROMISING INTEGRITY OF WALL WHEN ANCHORING FOUNTAIN. IT IS RECOMMENDED THAT INSTALLER CALL TECHNICAL SUPPORT IF THERE ARE ANY QUESTIONS AS TO HOW TO OBTAIN A PROPER ANCHOR IN CONCRETE/MASONRY WALLS. 1-800-766-5612



Haws®
Since 1906

ECN NO. REVISED PERBY: 6700
DRAWN: JG
DATE: 09/20/23
C/L: JG

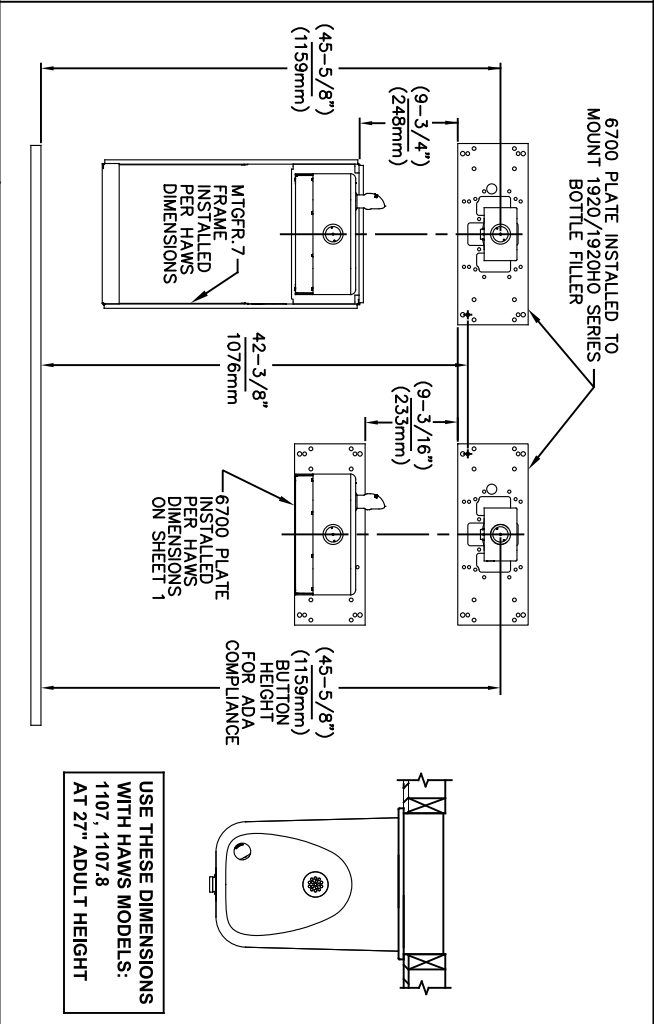
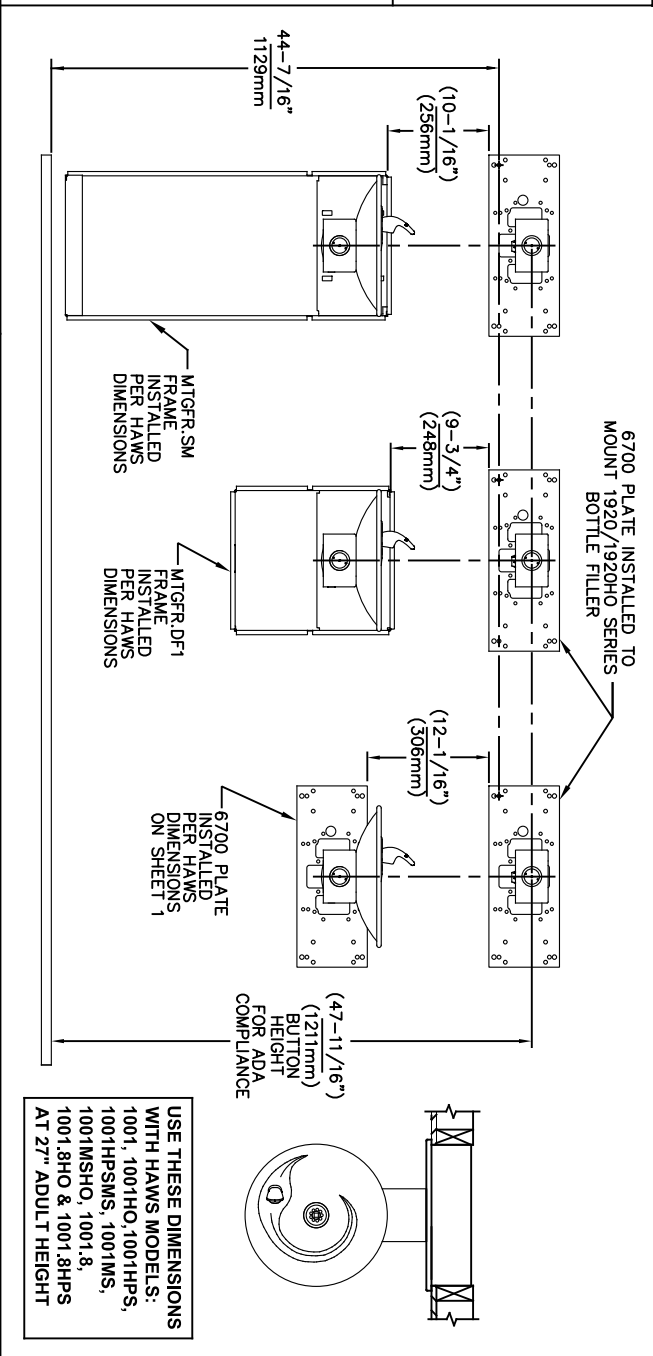
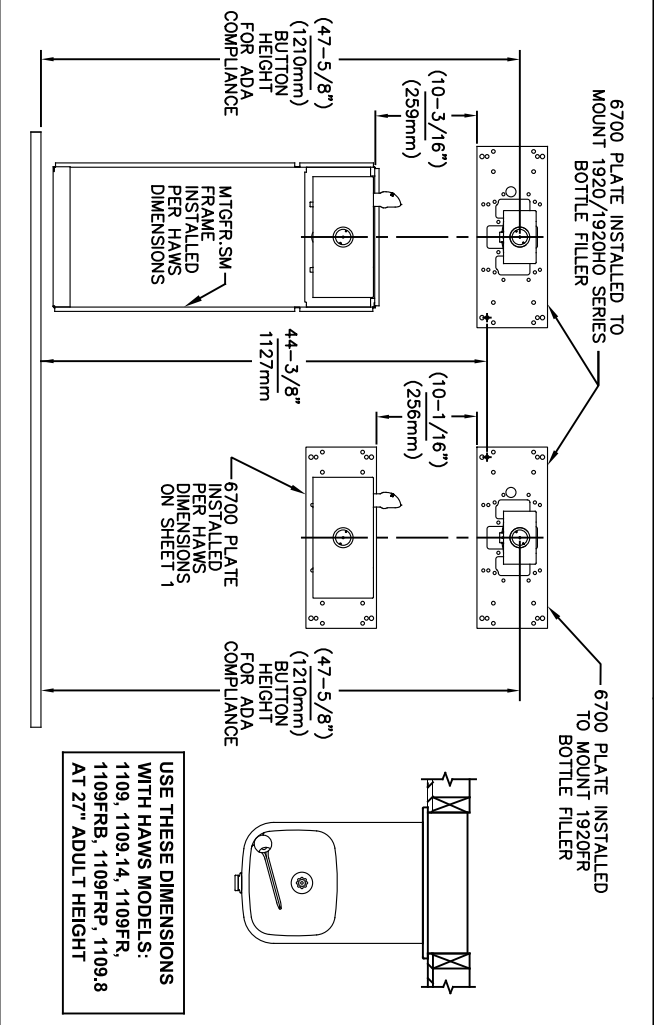
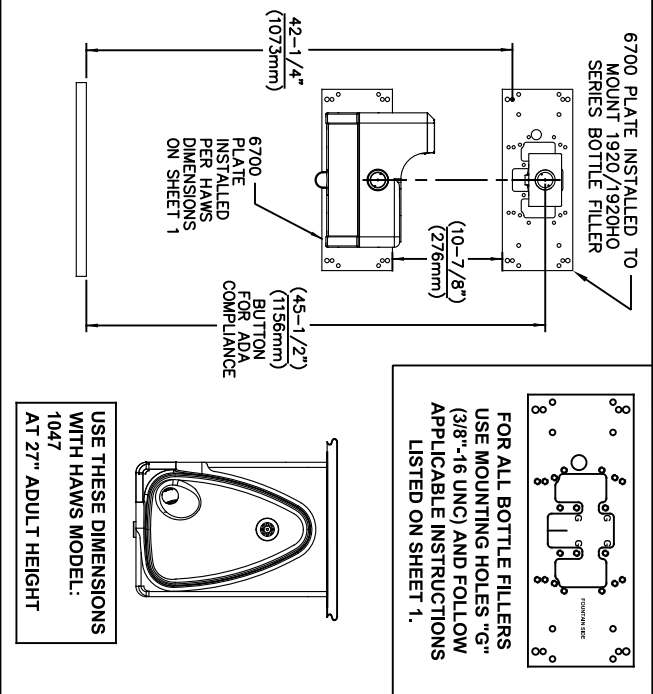
MODEL(S)
6700

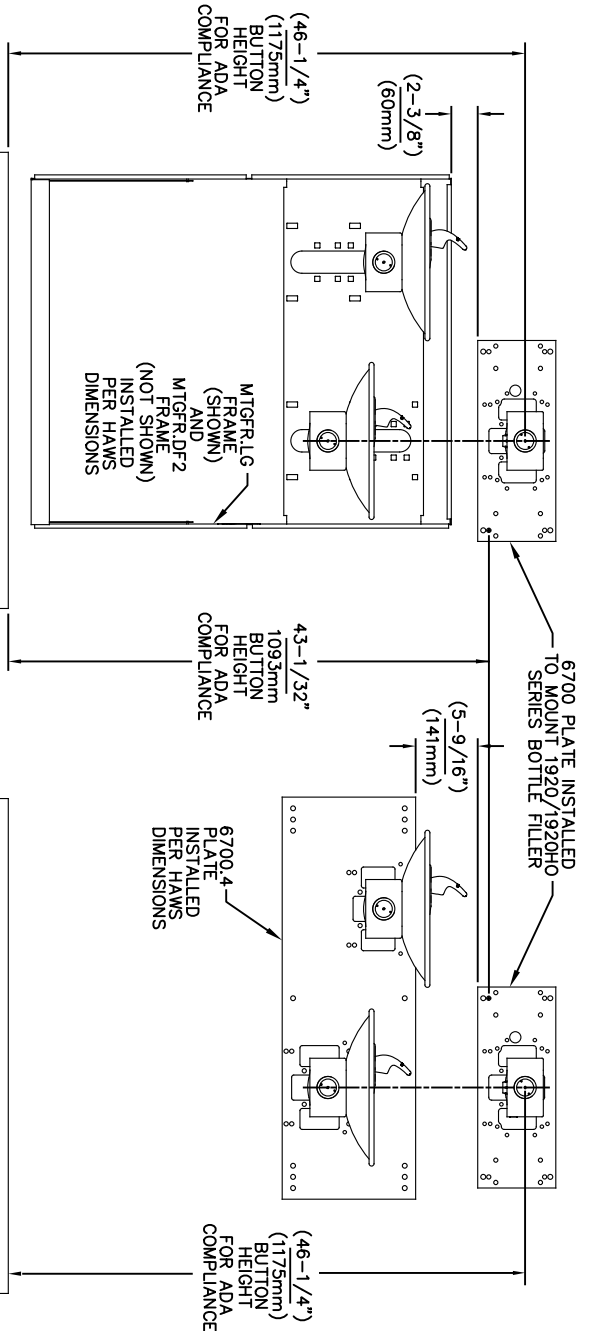
SCALE: N/A
DRAWING TYPE: INSTALLATION
SIZE: A
SHEET: 2 OF 6

1455 KLEPPE LANE
SPARKS, NEVADA 89431
(775) 359-4712 FAX (775) 359-7424
E-MAIL: HAWS@HAWS.CO.COM
WEBSITE: WWW.HAWS.CO.COM

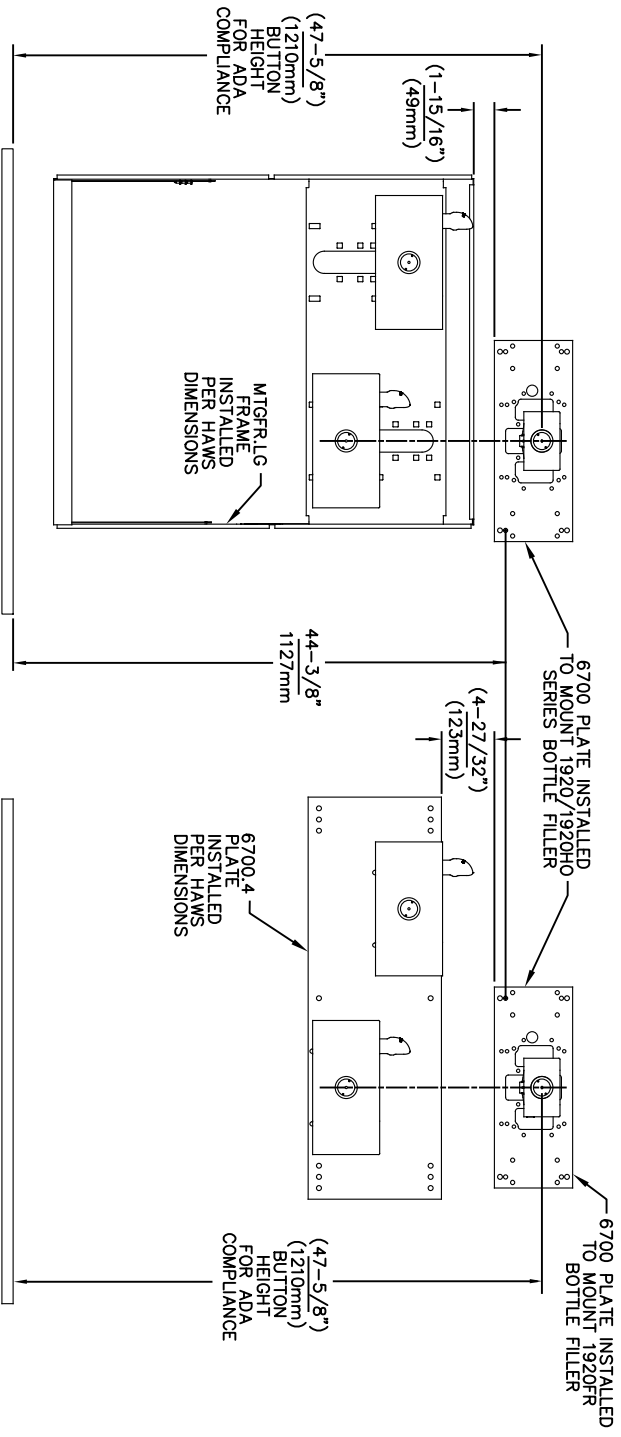
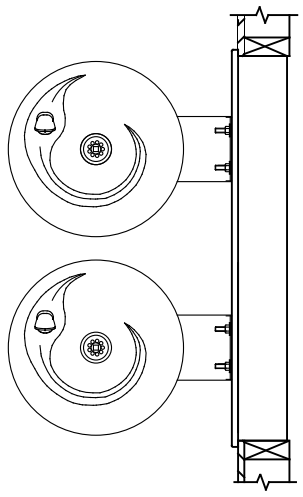
PART NUMBER
0002080016

REVISION
26

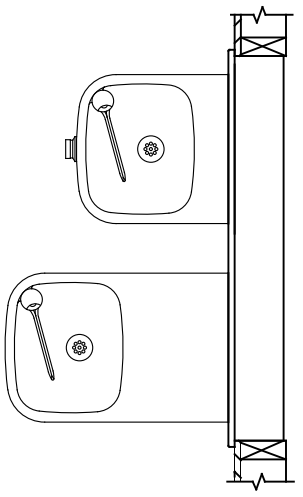




USE THESE MOUNTING DIMENSIONS IF INSTALLING OVER HAWS FOUNTAIN
MODEL: 1011, 1011HO, 1011HO2, 1011HPS, 1011HPSHO, 1011HPSHO2, 1011HPSMS, 1011HMS, 1011MSHO, 1011MSHO2, 1011.8, 1011.8HO, 1011.8HO2 & 1011.8HPSM AT 27" ADULT HEIGHT
INSTALL THE 6700 ABOVE THE FOUNTAIN MOUNTING PLATE OR FRAME AT THE DIMENSION SHOWN FOR CORRECT BACKPANEL SPACING
BACK PANELS FOR BOTTLE FILLERS (NOT SUPPLIED - OPTIONAL) ARE NOT SHOWN FOR CLARITY.




USE THESE MOUNTING DIMENSIONS IF INSTALLING OVER HAWS FOUNTAIN
MODEL: 1119, 1119.14, 1119.14HO, 1119.14HO2, 1119FR, 1119FRB, 1119FRP, 1119HO, 1119HO2 & 1119.8 AT 27" ADULT HEIGHT
INSTALL THE 6700 ABOVE THE FOUNTAIN MOUNTING PLATE OR FRAME AT THE DIMENSION SHOWN FOR CORRECT BACKPANEL SPACING
BACK PANELS FOR BOTTLE FILLERS (NOT SUPPLIED - OPTIONAL) ARE NOT SHOWN FOR CLARITY.



- NOTES:
1. WHEN INSTALLING THIS UNIT, LOCAL, STATE OR FEDERAL CODES SHOULD BE ADHERED TO.
 2. BACK PANELS (OPTIONAL) NOT SHOWN FOR CLARITY.

6700 MOUNTING PLATE
FOR USE WITH BOTTLE FILLER
(SEE SHEET 1 FOR USE WITH
DRINKING FOUNTAINS)



Since 1906

1456 KLEPPE LANE
SPARKS, NEVADA 89431
(775) 359-4712 FAX (775) 359-7424
E-MAIL: HAWS@HAWS.CO.COM
WEBSITE: WWW.HAWS.CO.COM

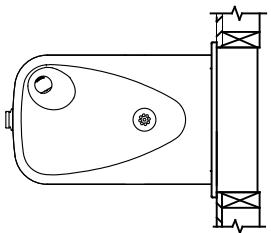
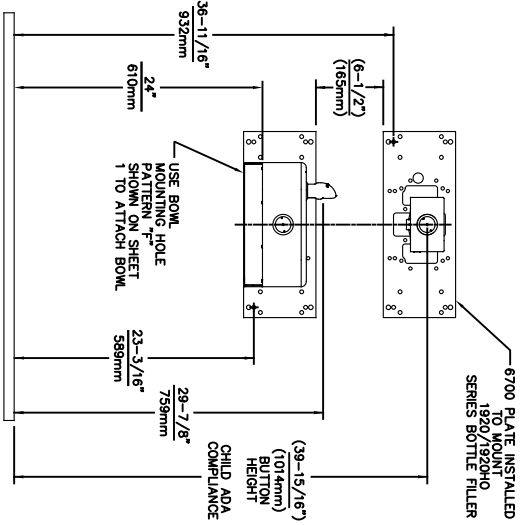
ECN NO. REVISED PERBY: MODEL(S)
5550 ECN: 6148 JG
DRAWN: DATE: CHKD: JG
FV: 05/14/20 JG
APPROVED: DATE: 02/11/25
SCALE: 1:13 DRAWING TYPE: INSTALLATION SIZE: A SHEET: 4 OF 6

6700

PART NUMBER: 0002080016
REVISION: 26

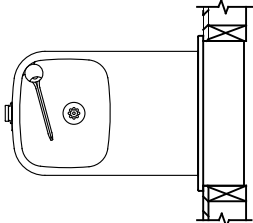
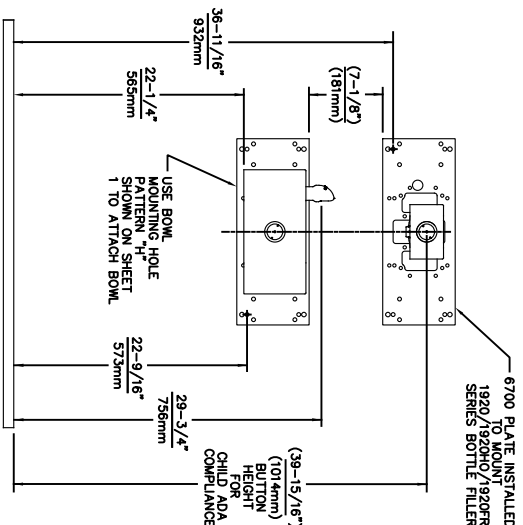
6700 MOUNTING PLATE
FOR USE WITH BOTTLE FILLER
(SEE SHEET 1 FOR USE WITH
DRINKING FOUNTAINS)

©2025 Haws Corporation - All Rights Reserved. HAWS® and other trademarks used in these materials are the exclusive property of Haws Corporation.



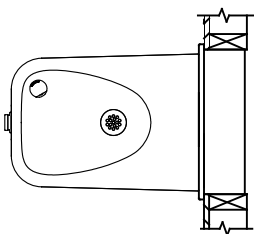
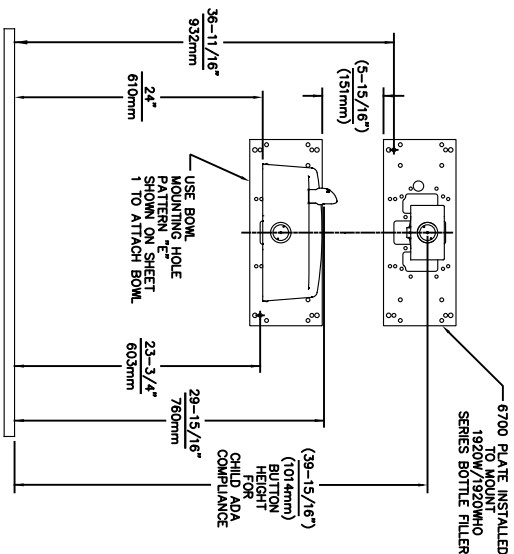
USE THESE DIMENSIONS WITH HAWS
MODEL:
1107PCH
AT 24\"/>

6700 MOUNTING PLATE
FOR USE WITH BOTTLE FILLER AT
40\"/>



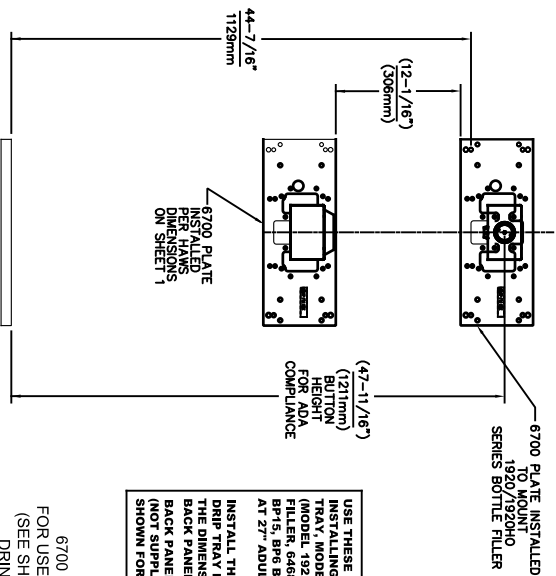
USE THESE DIMENSIONS WITH HAWS
MODELS:
1109, 1109.14, 1109FR, 1109FRB, 1109FRP
AT 22-1/4\"/>

6700 MOUNTING PLATE
FOR USE WITH BOTTLE FILLER AT
40\"/>




USE THESE DIMENSIONS WITH HAWS
MODEL:
1107PCH
AT 24\"/>

6700 MOUNTING PLATE
FOR USE WITH BOTTLE FILLER AT
40\"/>



USE THESE MOUNTING DIMENSIONS IF
INSTALLING OVER HAWS WASTE DRIP
TRAY. MODEL: 6468 (SHOWN), 1922
(MODEL 1922 INCLUDES 1920 BOTTLE
FILLER, 1920 WASTE DRIP TRAY, 1920
BP-15, 1920 BACK PANELS (NOT SHOWN),
AT 27\"/>

6700 MOUNTING PLATE
FOR USE WITH BOTTLE FILLER
(SEE SHEET 1 FOR USE WITH
DRINKING FOUNTAINS
AND WASTE DRIP TRAY)



1456 KLEPPE LANE
SPARKS, NEVADA 89431
(775) 359-4712 FAX (775) 359-7424
E-MAIL: HAWS@HAWS.CO.COM
WEBSITE: WWW.HAWS.CO.COM

ECN NO. REVISED PERBY:	MODEL(S)
5893 1 ECN: 6148 1 JG	6700
DRAWN: FV	PART NUMBER
07/26/23 JG	0002080016
APPROVED: FV	REVISION
02/11/25	26
SCALE: 1:13	SHEET 6 OF 6
DRAWING TYPE: INSTALLATION	