

FEATURES & BENEFITS

CONSTRUCTION

One-piece drinking fountains with low-profile design made of 14 gauge Type 304 stainless steel with 1/4" (.6 cm) thick stainless back plates welded in, and vandal-resistant stainless bottom plates. Satin finish resists stains and corrosion.

VANDAL RESISTANT

The bubbler heads, push buttons, drain strainers and bottom plates are locked in place, discouraging unwanted vandal tampering.

FOUNTAIN VALVES

The push-button activated valve offers the only all stainless steel valve body that is machined out of solid bar stock, is fully serviceable through the front of the push button assembly offering access to the water control cartridge and integral water supply strainer, and with front access to the water stream height adjustment for easy maintenance without having to remove the valve. Operating pressure range of 30 to 90 psi (2.1 to 6.2 bar).

BUBBLER HEADS

Polished chrome-plated brass bubbler head with integral basin shank for added strength. Shielded, angled stream opening provides a steady, sanitary source of drinking water at .45 gpm.

INTEGRATED TRAP

All cast brass 1-1/4" NPT adjustable traps completely concealed inside bottom plates for easy installation and lack of unwanted access.

CUSTOM LOGO PANEL

Personalize your new or existing fountain or bottle filler where space permits with an optional customizable 10" high by 4.25" wide stainless steel panel. Virtually any company logo, event logo or graphic can be placed on this panel. Mounted with strong, moisture-resistant adhesive backing.



SPECIFICATIONS

Model 1117B low profile wall-mounted vandal-resistant ADA drinking fountain shall include dual 14 gauge Type 304 stainless steel satin-finish basins with integral 1/4" (.6 cm) thick stainless steel mounting plates, 3/16" (.47 cm) thick steel in-wall mounting plate, vandal-resistant push-button operated stainless steel valves with front-accessible cartridge, in-line strainer and flow adjustment provide 100% lead free waterways, polished chrome-plated brass vandal-resistant bubbler heads, polished chrome-plated brass vandal-resistant waste strainers, vandal-resistant bottom plates, stainless steel satin finish back panel, and 1-1/4" NPT concealed all cast-brass traps. In extreme environments related to heat and cold, product(s) must be protected from damage/exposure due to these extreme conditions.

OPTIONS

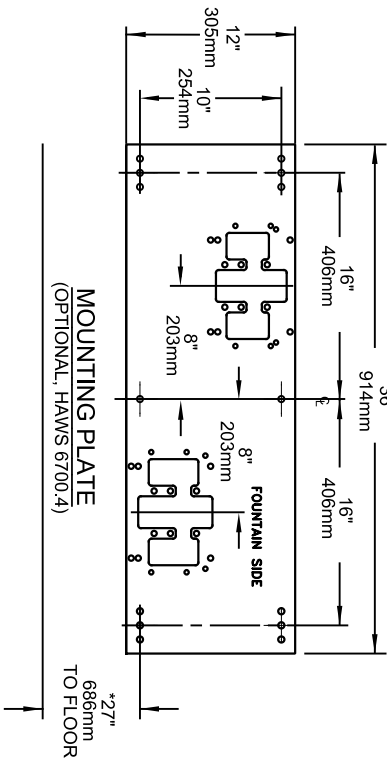
- Water Filter: Model 6480 filter kit with 3000 gallon carbon block filter, filter head, and mounting bracket.
- Bottle Filler: Model 1920 stand-alone bottle filling station, or mounted above Haws 1001, 1011, 1107L, 1109, 1117L, and 1119 series drinking fountain models.
- Bottle Filler Stand: Model BTL1107, add-on stainless steel stand to place bottle on when 1920 bottle filler is used.
- Support Frame: Model 6800 In-wall floor mounted fixture support legs, welded steel 4-bolt floor flanges, and supplied with 'U' bolts and hardware.

For more information, visit www.hawscow.com or call (888) 640-4297.

APPLICATIONS

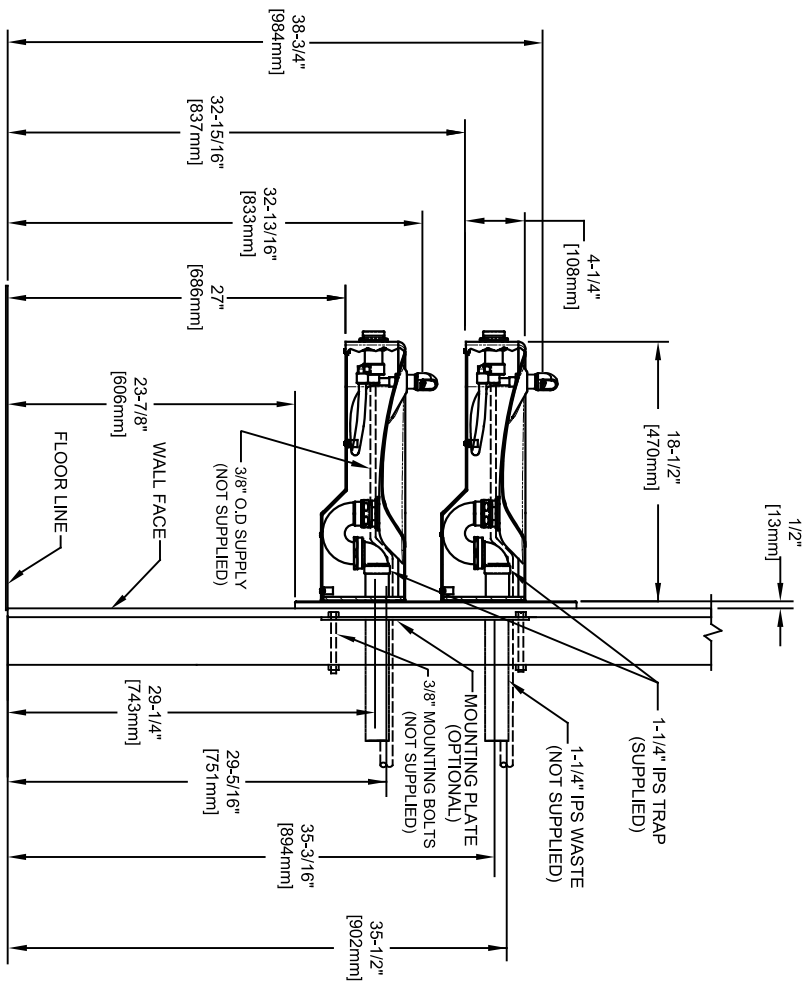
Perfect for either public or private indoor/outdoor settings, Model 1117B is a great fit in areas where aesthetics are important to the overall appeal of the architecture. Beautiful satin finish helps to maintain the fountains overall appeal. Specifically, this type of wall mounted drinking fountain may be placed in settings such as: schools and other locations in and around office buildings where the temperature remains above freezing. Model meets all current Federal Regulations for the disabled including those in the Americans with Disabilities Act. Haws manufactures drinking fountains, faucets and electric water coolers to be lead-free by all known definitions including NSF/ANSI/CAN 61-Section 9, NSF/ANSI/ CAN 372, California Proposition 65, and the Federal Safe Drinking Water Act. Product is compliant to California Health and Safety Code 116875 (AB 1953-2006), and 116876 (AB 100) "NSF/ANSI/CAN 61: Q ≤ 1".





1. HOLD ROUGH-IN DIMENSIONS $\pm 1/8"$ (3.2mm).

- SEE SHEET 2 FOR OPTIONAL
1920/1920HO BOTTLE FILLER WATER
DISPENSER, SHOWN INSTALLED OVER
MODEL 1117



BACK VIEW

ECN NO. REVISED PER BY:
5221 ECN.6148 J.G.

DRAWN: CHK'D.
G.C. 08/23/17 J.G.

APPROVED: DATE:
F.V. 02/12/25

MODEL(S)

1117

PART NUMBER
0580000675.D

REVISION
5

SCALE: 1:14

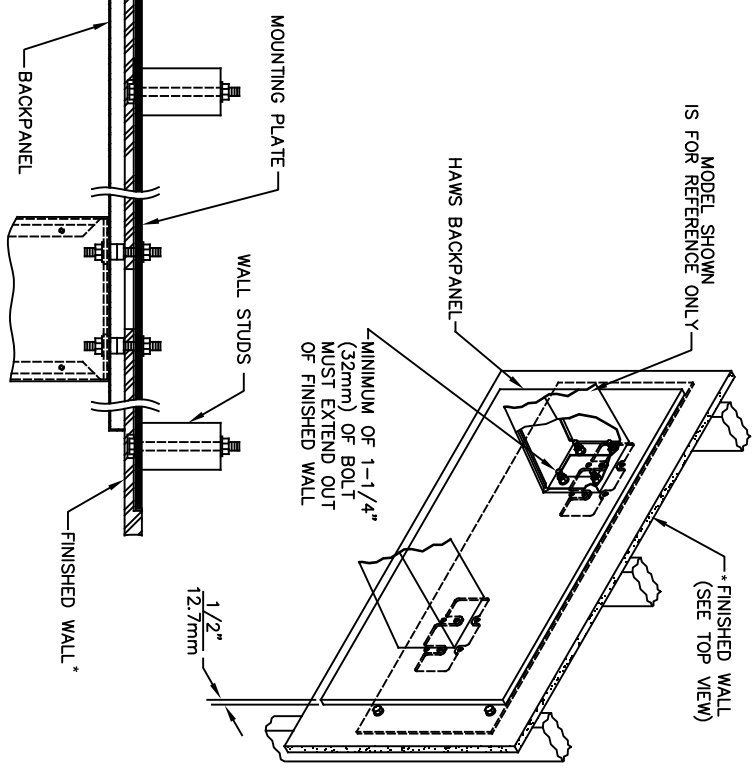
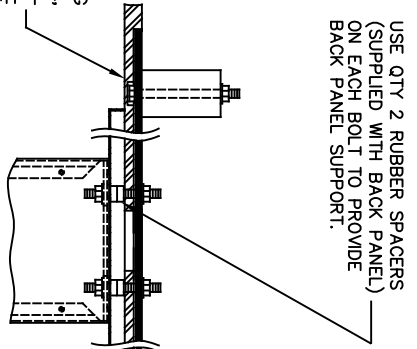
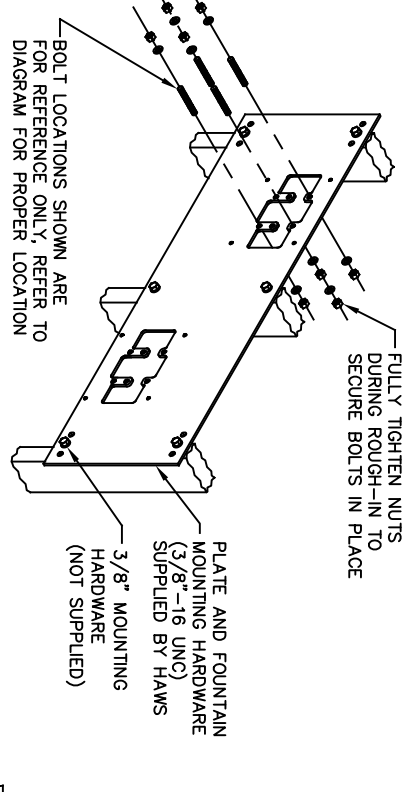
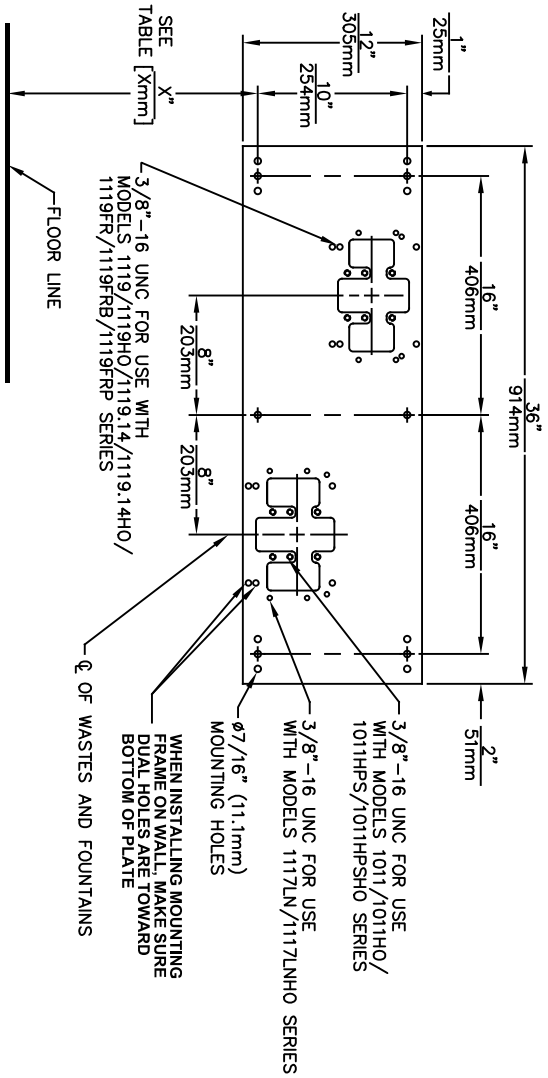
DRAWING TYPE:

INSTALLATION

SIZE: A

SHEET 1

OF 2




DIMENSION	1011HO/PS	MODEL
"X"	25-1/2" [648mm]	
LOWER SUPPLY	28-3/4" [730mm]	
LOWER WASTE	27-7/8" [708mm]	
UPPER SUPPLY	33-3/4" [857mm]	
UPPER WASTE	32-7/8" [835mm]	
DIMENSION	1119HO	MODEL
"X"	27-5/8" [702mm]	1119.14/HO
LOWER SUPPLY	29-5/8" [752mm]	
LOWER WASTE	30-3/4" [781mm]	
UPPER SUPPLY	35-3/8" [905mm]	
UPPER WASTE	36-1/2" [927mm]	
DIMENSION	1119FR	MODEL
"X"	27-5/8" [702mm]	
SUPPLY	SEE FREEZE VALVE ROUGH-IN	
WASTE		

DIMENSION	MODEL
"X"	27" [686mm]
LOWER SUPPLY	29-1/2" [749mm]
LOWER WASTE	29-1/4" [743mm]
UPPER SUPPLY	35-1/2" [892mm]
UPPER WASTE	35-1/4" [895mm]

CAUTION

REGARDING CONCRETE/MASONRY WALL MOUNTING-DO NOT SECURE MOUNTING PLATE TO SAME SIDE OF WALL AS FOUNTAIN. AVOID COMPROMISING INTEGRITY OF WALL WHEN ANCHORING FOUNTAIN. IT IS RECOMMENDED THAT INSTALLER CALL TECHNICAL SUPPORT IF THERE ARE ANY QUESTIONS AS TO HOW TO OBTAIN A PROPER ANCHOR IN CONCRETE/MASONRY WALLS. 1-800-766-5612



Since 1906

1456 KLEPPE LANE
SPARKS, NEVADA 89431
(775) 359-4712 FAX (775) 359-7424
E-MAIL: HAWS@HAWS.CO.COM
WEBSITE: WWW.HAWS.CO.COM

ECN NO. REVISED PER BY: MODEL(S)
DRAWN: ECN: 6148 JG
DATE: 04/29/03 CHKD: JG
C/L: JG
APPROVED: FV DATE: 02/11/25 SCALE: N/A DRAWING TYPE: INSTALLATION SHEET 1 OF 1

6700.4
PART NUMBER: 0002080023
REVISION: 20