

## FEATURES & BENEFITS

### CONSTRUCTION

Unit is made of 18 gauge Type 304 stainless steel with a satin finish that resists stains and corrosion, and has soft, rounded corners. Unit features stainless steel satin finish back panel, vandal-resistant bottom plate, and 1-1/4" integral trap.

### BUBBLER HEAD

Polished chrome-plated brass bubbler head with integral 11/16" dia. basin shank and stainless anti-rotation roll pin for vandal resistance strength. Shielded, angled stream opening provides a steady, sanitary source of drinking water at .45 gpm.

### FOUNTAIN VALVE

The push-button activated valve offers the only all stainless steel valve body that is machined out of solid bar stock, is fully serviceable through the front of the push button assembly offering access to the water control cartridge and integral water supply strainer, and with front access to the water stream height adjustment for easy maintenance without having to remove the valve. Operating pressure range of 30 to 90 psi (2.1 to 6.2 bar).

### VANDAL RESISTANT

The bubbler head, push button, drain strainer and bottom plate are locked in place, discouraging unwanted vandal tampering.

### INTEGRATED TRAP

All cast brass 1-1/4" NPT adjustable trap completely concealed inside bottom plate for easy installation and access.



## SPECIFICATIONS

Model 1109B barrier-free wall mounted vandal-resistant drinking fountain shall include an 18 gauge Type 304 Stainless Steel satin finish basin, 3/16" (.47 cm) thick steel in-wall mounting plate, vandal-resistant push-button operated stainless steel valve with front accessible cartridge, in-line strainer and flow adjustment, 100% leadfree waterways, polished chrome-plated brass vandal-resistant bubbler head, polished chrome-plated brass vandal-resistant waste strainer, vandal-resistant stainless bottom plate, and 1-1/4" NPT all cast-brass trap. In extreme environments related to heat and cold, product(s) must be protected from damage/exposure due to these extreme conditions.

## OPTIONS

- Water Filter: Model 6480 filter kit with 3000 gallon carbon block filter, filter head, and mounting bracket.
- Bottle Filler: Model 1920, bottle filler can be a stand-alone station, or mounted above Haws 1001, 1011, 1107L, 1109, 1117L, and 1119 series drinking fountain models.
- Remote Drinking Fountain Water chiller: Model HCR8, 8 gph (30.3 L) remote water chiller provides instantaneous cooling to meet a continuous demand for chilled water.
- Support Frame: Model 6800 In-wall floor mounted fixture support legs, welded steel 4-bolt floor flanges, and supplied with 'U' bolts and hardware.

For more information, visit [www.hawscos.com](http://www.hawscos.com) or call (888) 640-4297.

## APPLICATIONS

Perfect for either public or private indoor/outdoor settings, Model 1109B is a great fit in areas where aesthetics are important to the overall appeal of the architecture. Beautiful satin finish helps to maintain the fountains overall appeal. Specifically, this type of wall mounted drinking fountain may be placed in settings such as: schools and other locations in and around office buildings where the temperature remains above freezing. Model meets all current Federal Regulations for the disabled including those in the Americans with Disabilities Act. Haws manufactures drinking fountains, faucets and electric water coolers to be lead-free by all known definitions including NSF/ANSI/CAN 61-Section 9, NSF/ANSI/CAN 372, California Proposition 65, and the Federal Safe Drinking Water Act. Product is compliant to California Health and Safety Code 116875 (AB 1953-2006), and 116876 (AB 100) "NSF/ANSI/CAN 61: Q ≤ 1".



## NOTES:

1. HOLD ROUGH-IN DIMENSIONS  $\pm 1/4"$  (6.4mm).
2. WHEN INSTALLING THIS UNIT LOCAL, STATE OR FEDERAL CODES SHOULD BE ADHERED TO. FOR INSTALLATION HEIGHTS OTHER THAN SHOWN, DIMENSIONS MARKED (\*) MUST BE ADJUSTED ACCORDINGLY.
3. REFER TO 5874 SERIES/VRK5874 OPERATION AND MAINTENANCE MANUAL FOR PUSH BUTTON AND VALVE INSTALLATION/MAINTENANCE INSTRUCTIONS.

#### 4 ROUGH IN DIMENSIONS FOR FOUNTAIN HEIGHTS:

## CHILD WHEELCHAIR HEIGHT

WASTE: 28-1/8" (714mm)

SUPPLY: 26-1/8" (664mm)

FOUNTAIN (ONLY) HOLE: 23-7/16" (595mm)

MOUNTING PLATE HOLE: 23-5/16" (592mm)

FOUNTAIN: 24" (610mm)

BUBBLER: 31-1/2" (800mm)

## ADULT WHEELCHAIR HEIGHT

WASTE: 31-1/8" (791mm)

SUPPLY: 29-1/2" (749mm)

**FOUNTAIN (ONLY) HOLE: 27-7/16" (697mm)**

MOUNTING PLATE HOLE: 27-5/16" (694mm)

FOUNTAIN: 27" (686mm)

BUBBLER: 34-1/2" (876mm)

## STANDING ADULT HEIGHT

WASTE: 37-1/8" (943mm)

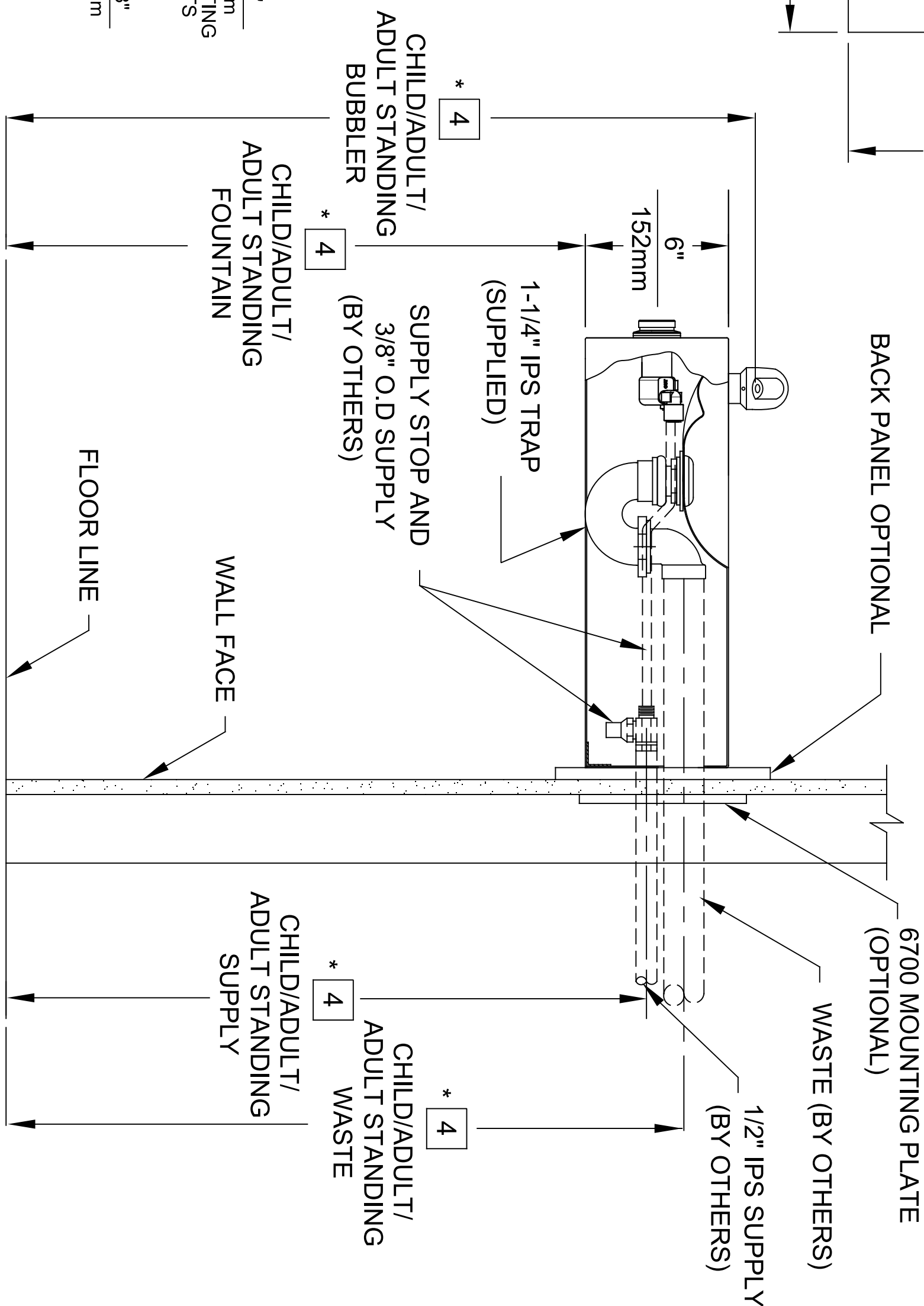
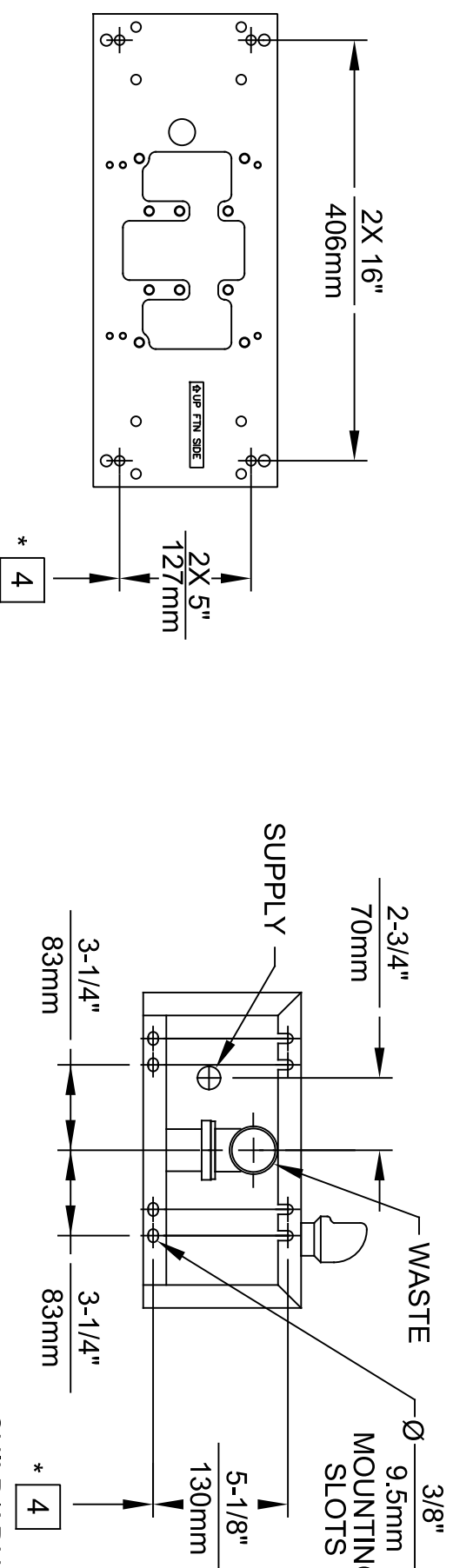
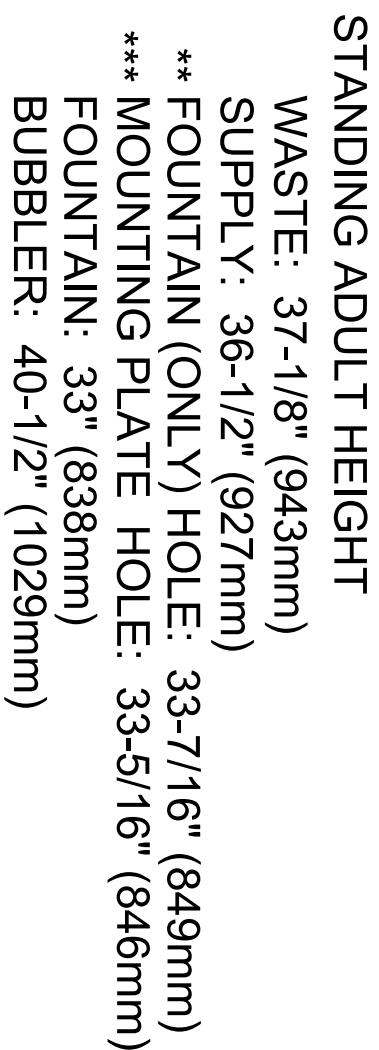
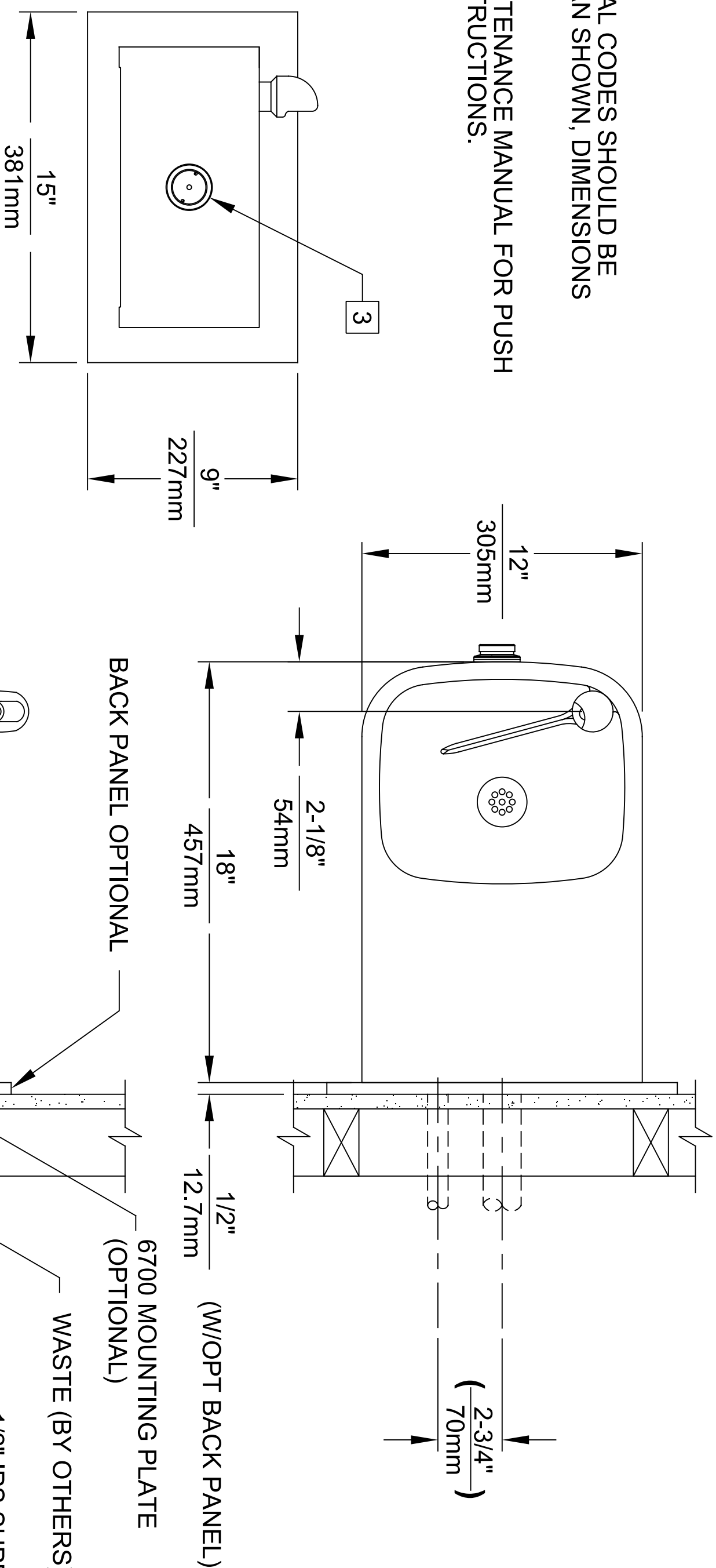
SUPPLY: 36-1/2" (927mm)

FOUNTAIN (ONLY) HOLE: 33-7/16" (849mm)

**MOUNTING PLATE HOLE: 33-5/16" (846mm)**

FOUNTAIN: 33" (838mm)

BUBBLER: 40-1/2" (1029mm)

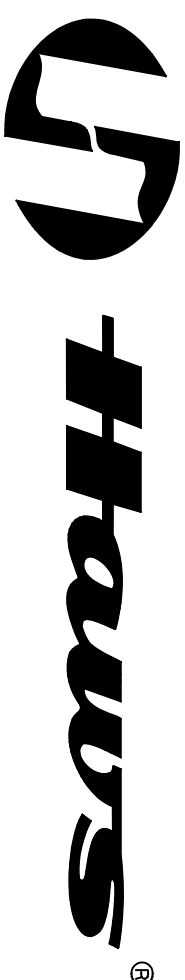


## MOUNTING PLATE

FOR USE WITH OPTIONAL  
MOUNTING PLATE MODEL 6700

## MOUNTING DETAIL

FOR USE WITHOUT OPTIONAL  
MOUNTING PLATE MODEL 6700




1455 KLEPPE LANE  
SPARKS, NEVADA 89431  
(775) 359-4712 FAX (775) 359-7424  
E-MAIL: HAWS@HAWS.CO.COM  
WEBSITE: WWW.HAWS.CO.COM

ECN NO.		REVISED PER BY:		PART NUMBER	
ECN: 6234		JG		0002076620.D	
DRAWN:		DATE:		CHKD:	
F. VASQUEZ		03/96		JG	
APPROVED:		DATE:		REVISION	
RH		04/22/25		21	
SCALE:		NA		DRAWING TYPE:	
INSTALLATION		SIZE: A		SHEET 1 OF 1	

6700 INDEX

INSTALLATION WITH:	TYPICAL USES	SEE SHEET ...
GENERAL INSTALLATION	IMPORTANT INFORMATION FOR ALL INSTALLATIONS	3 OF 6
1001 BOWLS	HAWS SERIES 1001X, 1001.8X	3 OF 6
1107 BOWLS	HAWS SERIES 1107X, 1107.8X	3 OF 6
1109 BOWLS	HAWS SERIES 1109X, 1109.8X	3 OF 6
1047 BOWLS	HAWS SERIES 1047	4 OF 6
1011 BOWLS	HAWS SERIES 1011X, 1011.8X	4 OF 6
1119 BOWLS	HAWS SERIES 1119X, 1119.8X	4 OF 6
1117 BOWLS	HAWS SERIES 1117X, 1117.8X	5 OF 6
1311 BOWLS	HAWS SERIES 1311	5 OF 6
1501 BOWLS	HAWS SERIES 1501	5 OF 6
CHILD HEIGHT	HAWS 1107PCH, 1109PCH, 1311PCH	6 OF 6



Haws

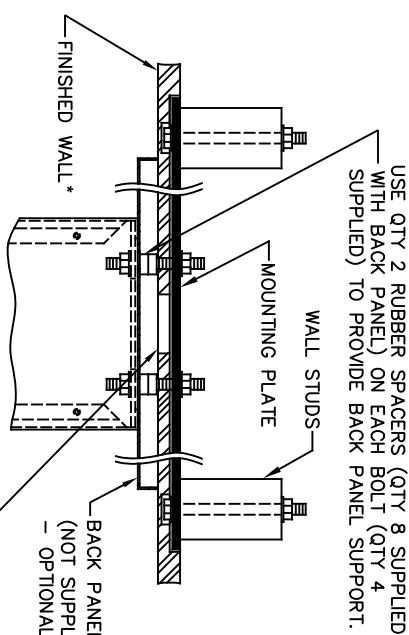
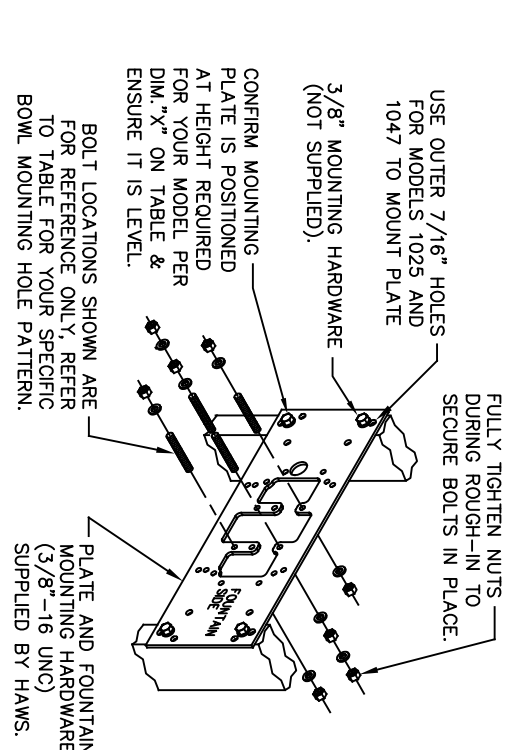
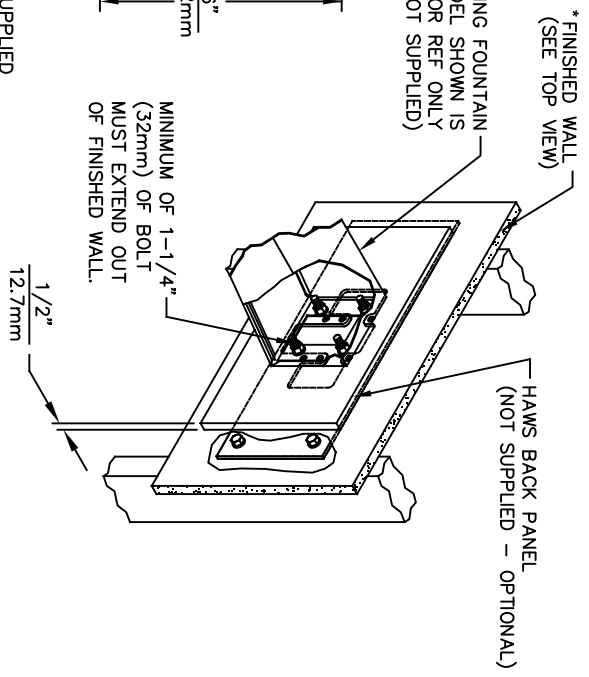
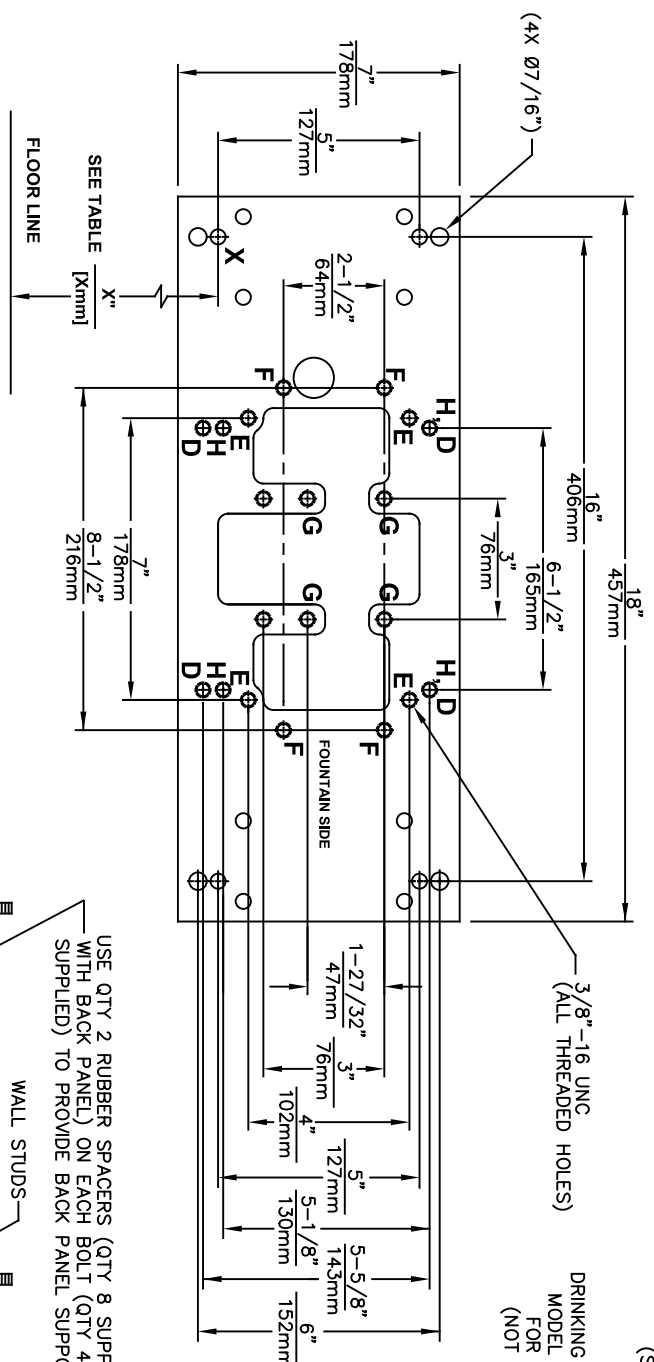
Since 1906

1455 KLEPPE LANE  
SPARKS, NEVADA 89431  
(775) 359-4712 FAX (775) 359-7424  
E-MAIL: HAWS@HAWS.CO.COM  
WEBSITE: WWW.HAWS.CO.COM

ECN NO. REVISED PER BY: JG  
DRAWN: JG  
DATE: 10/03/24  
APPROVED: JG

MODEL(S)  
67/00

PART NUMBER  
0002080016  
REVISION  
26



DRINKING FOUNTAIN (ONLY) AT 27" ADULT HEIGHT (SEE SPECIFIC MODEL O&M'S FOR OTHER HEIGHTS)			
MODEL	USE BOWL MTG. HOLE PATTERN	USE "X" DIM. BELOW TO POSITION MOUNTING PLATE HOLE "X"	
1001	"G"	25-3/8" [645mm]	
1025	"D"	28-1/8" [714mm]	
1047	"E"	24-3/8" [619mm]	
1105	"H"	34-5/16" [872mm]	
1107	"F"	26-3/16" [665mm]	
1109	"H"	27-5/16" [694mm]	
1109.14	"H"	27-5/16" [694mm]	
1109FR	"H"	27-5/16" [694mm]	
1311	"E"	26-3/4" [679mm]	
WASTE DRIP TRAY (ONLY) AT 27" ADULT HEIGHT			
6468	"G"	25-3/8" [645mm]	
1922	"G"	25-3/8" [645mm]	

**TOP VIEW**

**6700 MOUNTING PLATE**

**FOR USE WITH**

**DRINKING FOUNTAINS**

**AND WASTE DRIP TRAYS**

**AT 27" ADULT HEIGHT**

**(SEE SHEETS 2 - 5 FOR USE WITH**


**BOTTLE FILLER 1920/1920HO SERIES**

**AND CHILD HEIGHT APPLICATIONS)**

**\*\*FINISH WALL OVER MOUNTING PLATE AND BEHIND BACK PANEL. MAKE SURE THAT FINISHED WALL EXTENDS WITHIN THE BRACKET/BOWL MOUNTING HOLES (TO PROVIDE SURFACE AREA FOR RUBBER SPACERS TO CONTACT).**

**CAUTION**

REGARDING CONCRETE/MASONRY WALL MOUNTING: DO NOT SECURE MOUNTING PLATE TO SAME SIDE OF WALL AS FOUNTAIN. AVOID COMPROMISING INTEGRITY OF WALL WHEN ANCHORING FOUNTAIN. IT IS RECOMMENDED THAT INSTALLER CALL TECHNICAL SUPPORT IF THERE ARE ANY QUESTIONS AS TO HOW TO OBTAIN A PROPER ANCHOR IN CONCRETE/MASONRY WALLS. 1-800-766-5612



**Haws®**  
Since 1906

ECN NO. REVISED PERBY: 6700

DRAWN: JG DATE: 02/11/25

CAL: JG

APPROVED: 02/11/25

SCALE: N/A

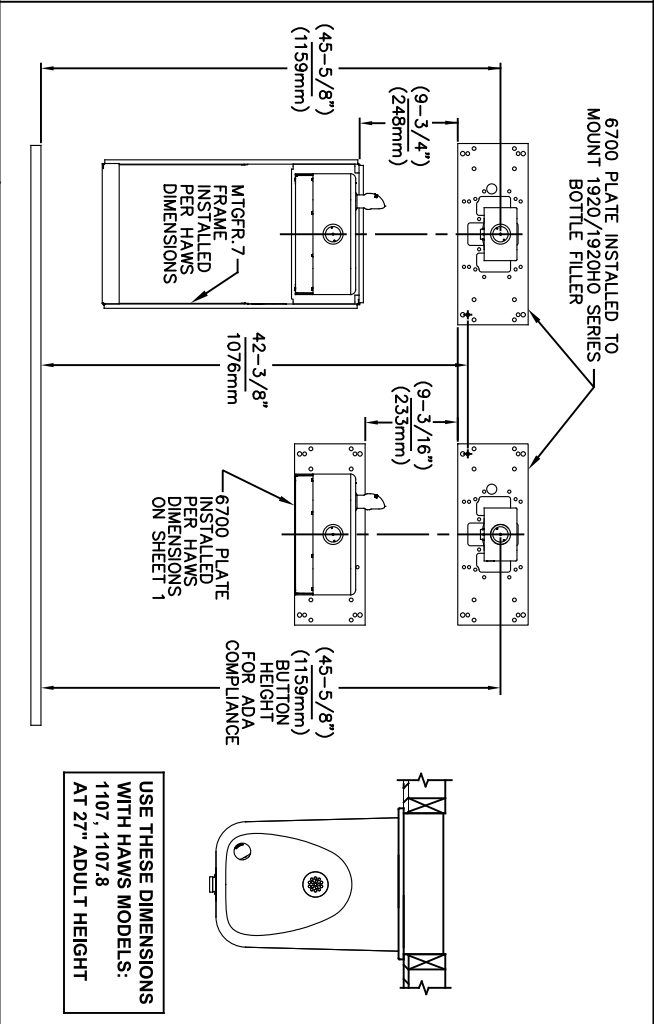
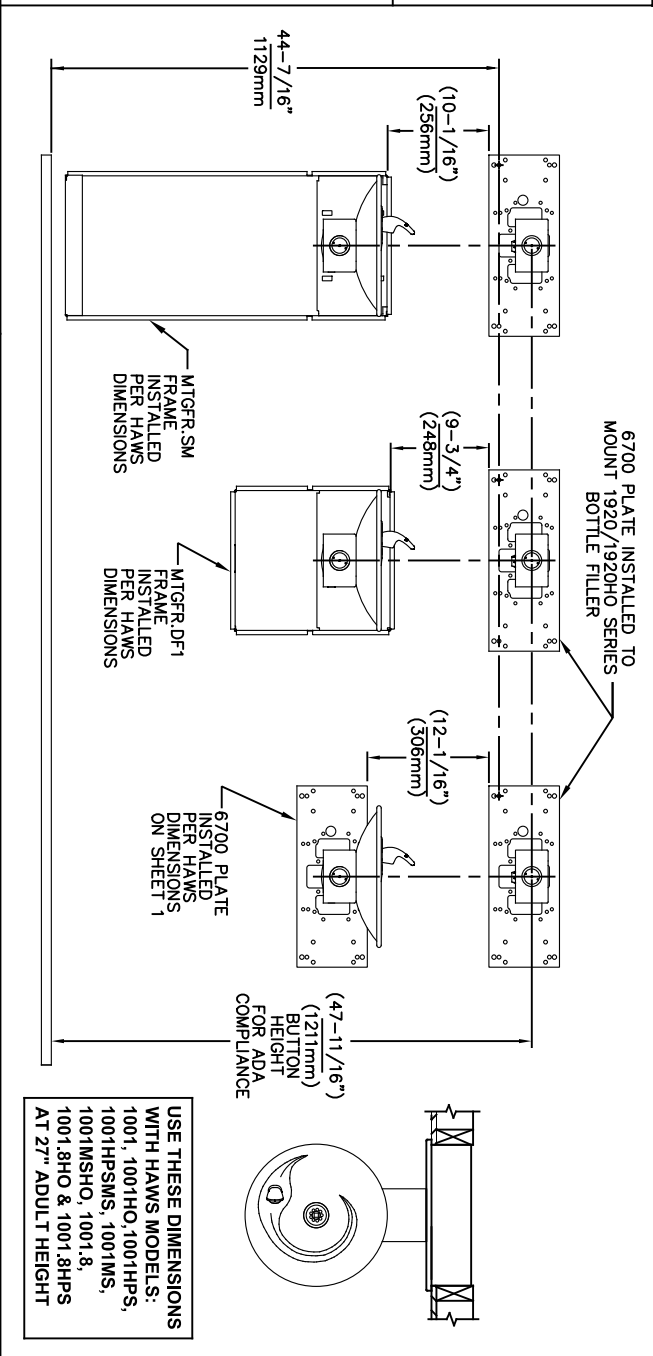
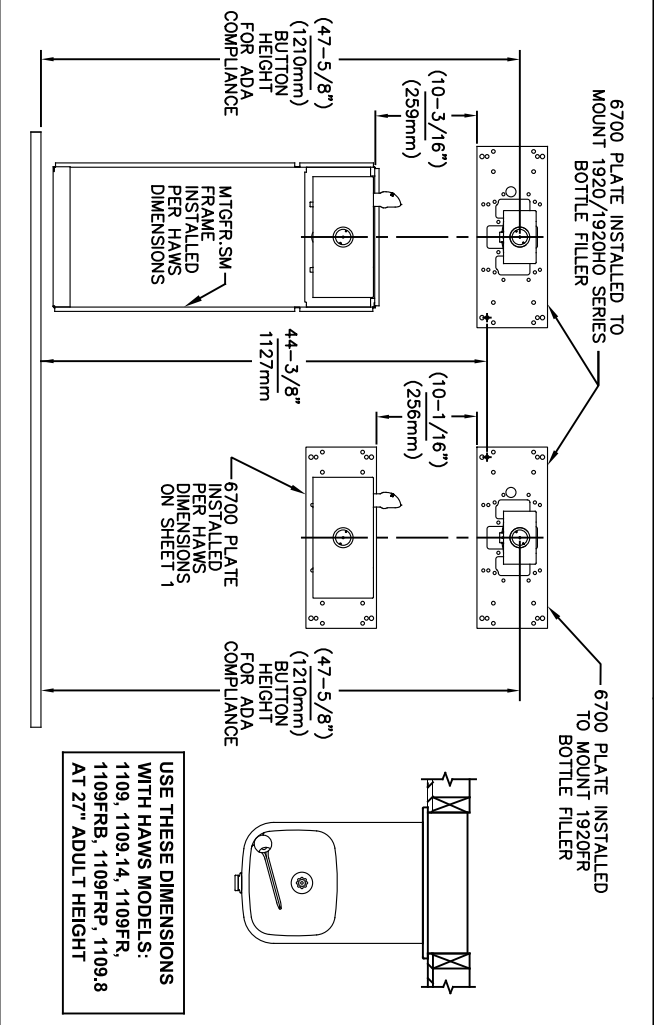
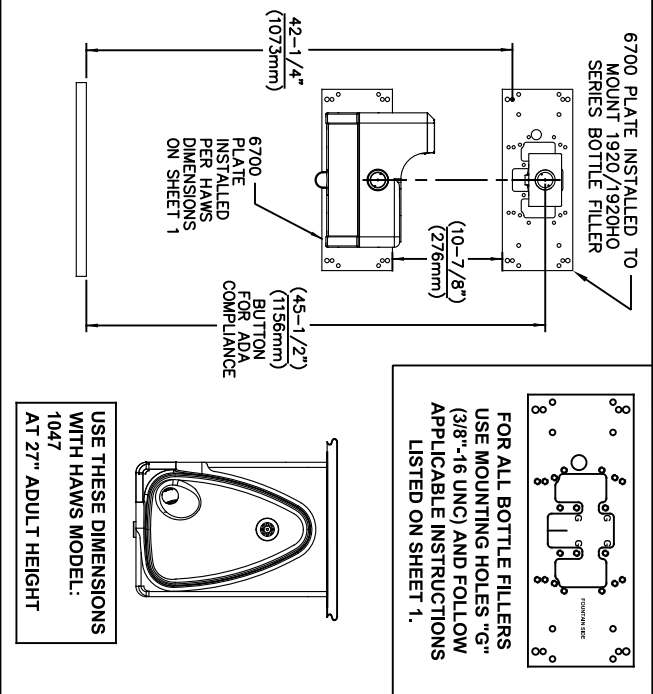
DRAWING TYPE: INSTALLATION

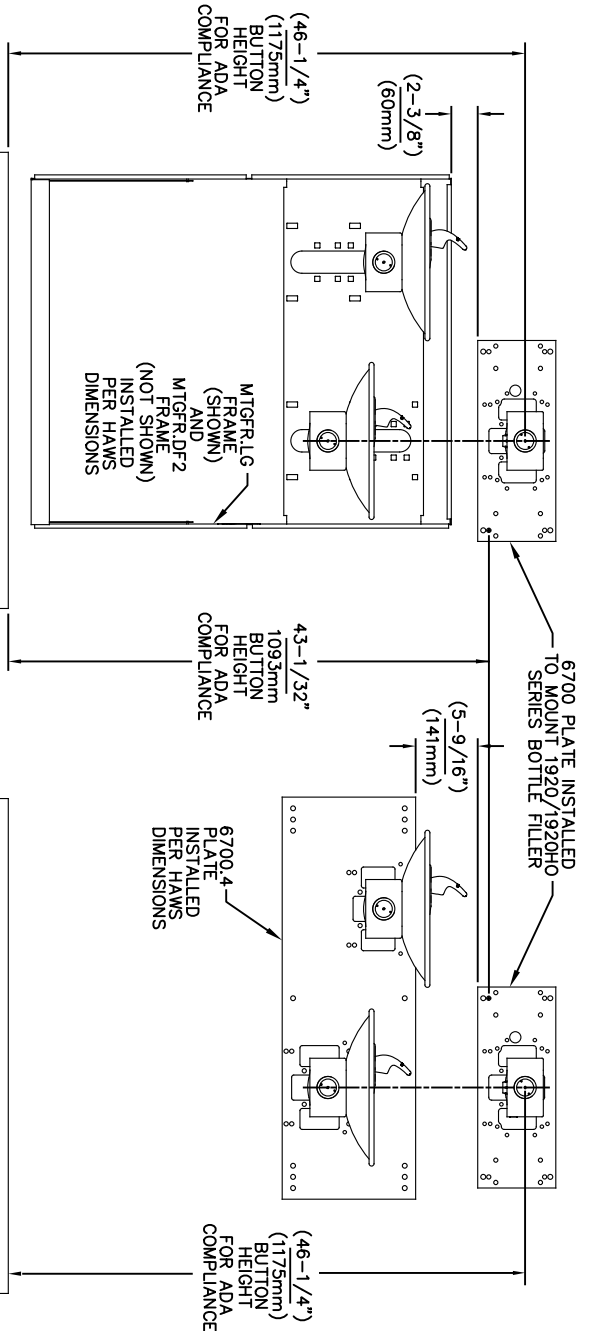
SIZE: A

SHEET: 2 OF 6

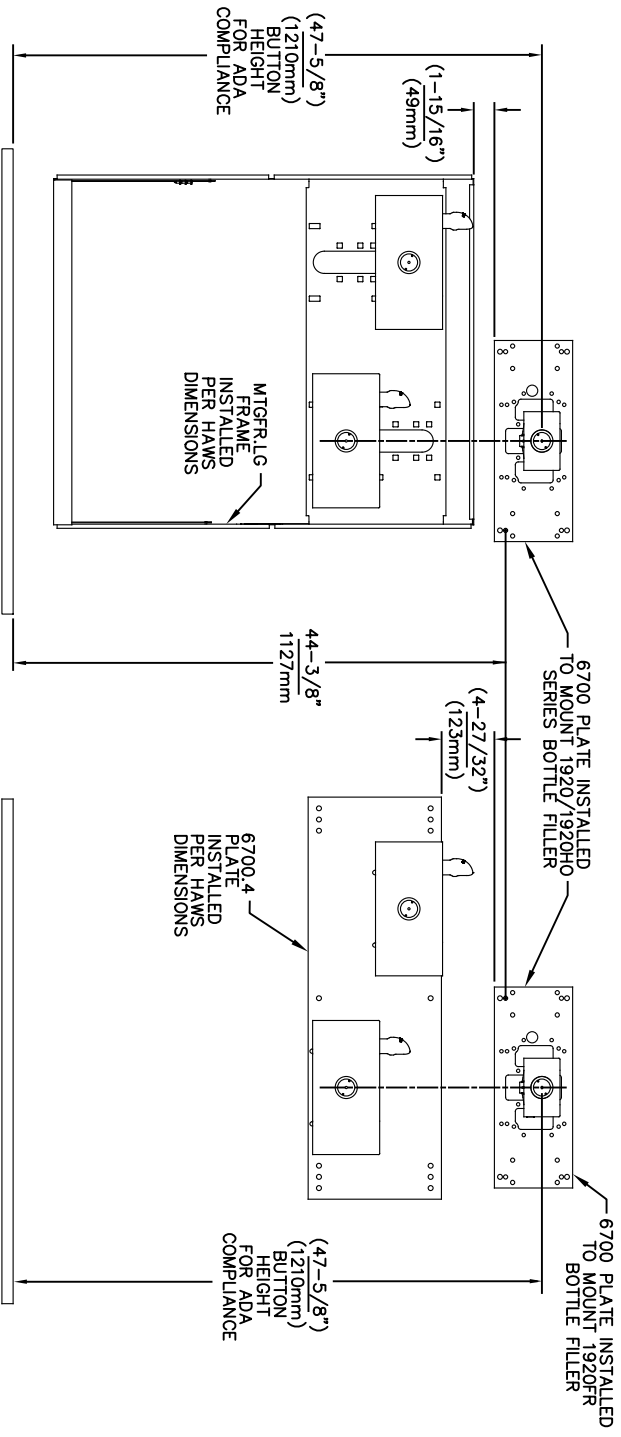
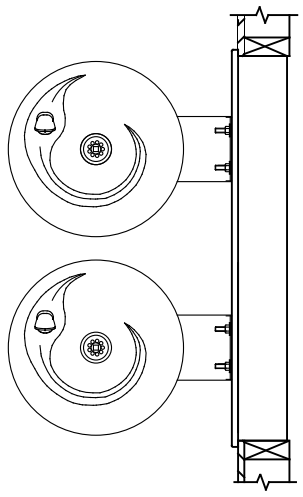
1455 KLEPPE LANE  
SPARKS, NEVADA 89431  
(775) 359-4712 FAX (775) 359-7424  
E-MAIL: HAWS@HAWS.CO.COM  
WEBSITE: WWW.HAWS.CO.COM

PART NUMBER  
0002080016

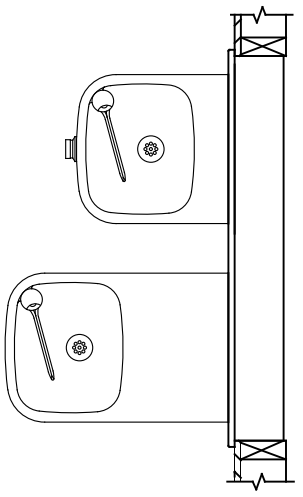




**USE THESE MOUNTING DIMENSIONS IF INSTALLING OVER HAWS FOUNTAIN**  
MODEL: 1011, 1011HO, 1011HO2, 1011HPS, 1011HPSHO, 1011HPSHO2, 1011HPSMS, 1011HMS, 1011MSHO, 1011MSHO2, 1011.8, 1011.8HO, 1011.8HO2 & 1011.8HPSM AT 27" ADULT HEIGHT  
INSTALL THE 6700 ABOVE THE FOUNTAIN MOUNTING PLATE OR FRAME AT THE DIMENSION SHOWN FOR CORRECT BACKPANEL SPACING  
BACK PANELS FOR BOTTLE FILLERS (NOT SUPPLIED - OPTIONAL) ARE NOT SHOWN FOR CLARITY.




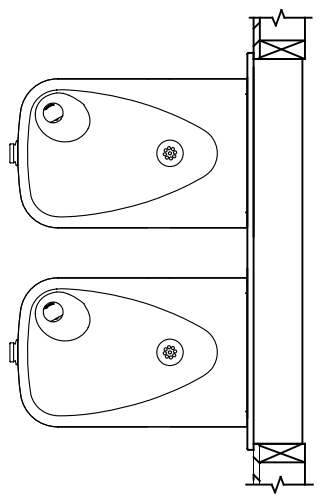
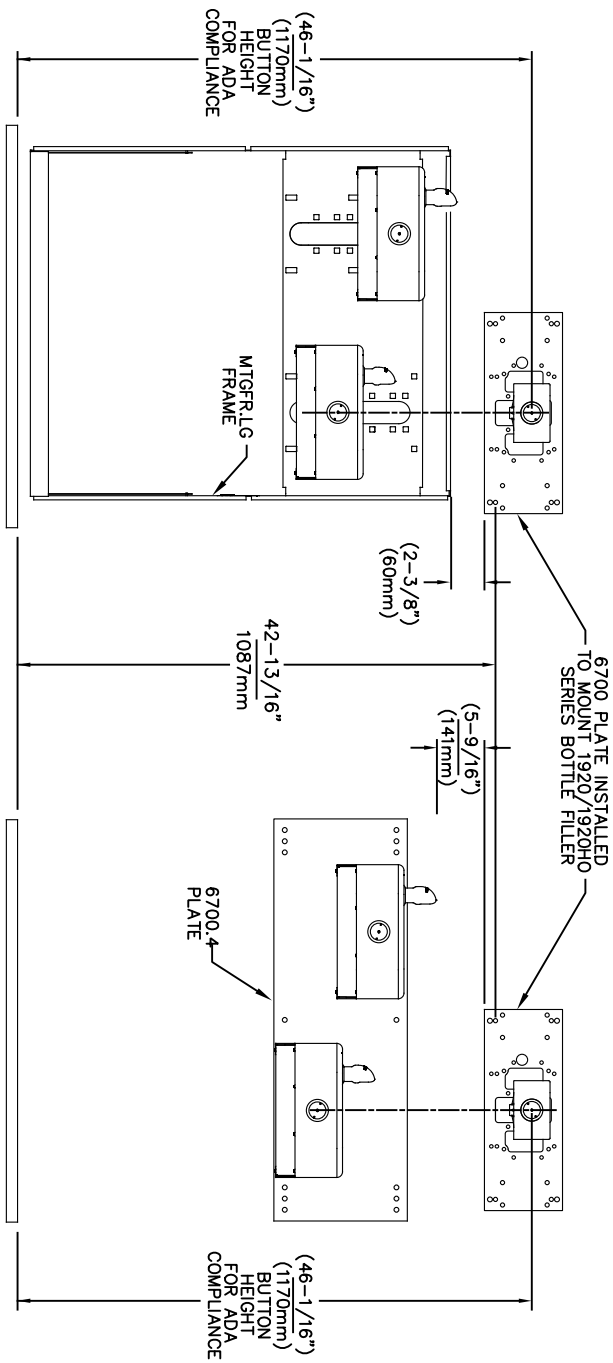
**USE THESE MOUNTING DIMENSIONS IF INSTALLING OVER HAWS FOUNTAIN**  
MODEL: 1119, 1119.14, 1119.14HO, 1119.14HO2, 1119FR, 1119FRB, 1119FRP, 1119HO, 1119HO2 & 1119.8 AT 27" ADULT HEIGHT  
INSTALL THE 6700 ABOVE THE FOUNTAIN MOUNTING PLATE OR FRAME AT THE DIMENSION SHOWN FOR CORRECT BACKPANEL SPACING  
BACK PANELS FOR BOTTLE FILLERS (NOT SUPPLIED - OPTIONAL) ARE NOT SHOWN FOR CLARITY.



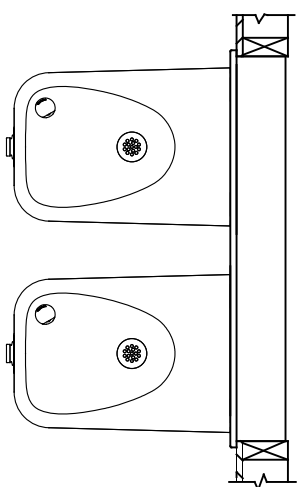
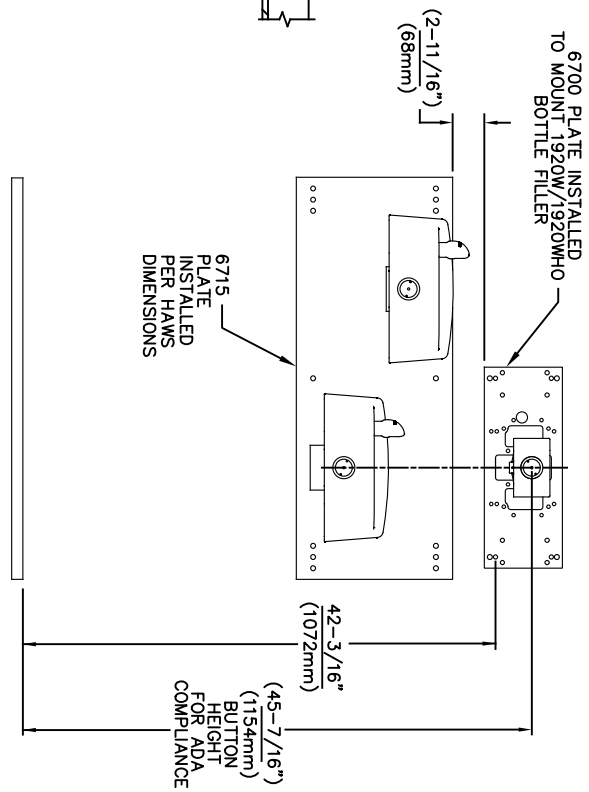
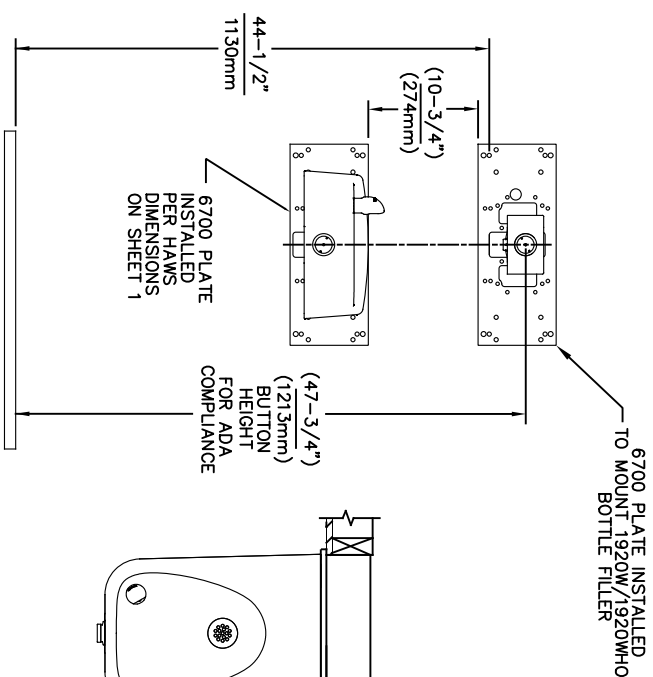
- NOTES:
1. WHEN INSTALLING THIS UNIT, LOCAL, STATE OR FEDERAL CODES SHOULD BE ADHERED TO.
  2. BACK PANELS (OPTIONAL) NOT SHOWN FOR CLARITY.

6700 MOUNTING PLATE  
FOR USE WITH BOTTLE FILLER  
(SEE SHEET 1 FOR USE WITH  
DRINKING FOUNTAINS)

		1456 KLEPPE LANE SPARKS, NEVADA 89431 (775) 359-4712 FAX (775) 359-7424 E-MAIL: HAWS@HAWS.CO.COM WEBSITE: WWW.HAWS.CO.COM	
ECN NO. REVISED PERBY:	MODEL(S)	6700	
5550 ECN: 6148 JG	DATE: 09/14/20 JG	PART NUMBER 0002080016	
DRAWN: FV	DATE: 02/11/25	REVISION: 26	
APPROVED: FV	SCALE: 1:13	DRAWING TYPE: INSTALLATION	
SIZE: A		SHEET 4 OF 6	




USE THESE MOUNTING DIMENSIONS IF  
INSTALLING OVER HAWS FOUNTAIN  
MODEL: 1117, 1117.8  
AT 27" ADULT HEIGHT  
INSTALL THE 6700 ABOVE THE  
FOUNTAIN MOUNTING PLATE OR  
FRAME AT THE DIMENSION SHOWN  
FOR CORRECT BACKPANEL SPACING  
BACK PANELS FOR BOTTLE FILLERS  
(NOT SUPPLIED - OPTIONAL) ARE NOT  
SHOWN FOR CLARITY.



USE THESE MOUNTING DIMENSIONS IF  
INSTALLING OVER HAWS FOUNTAIN  
MODEL: 1311, 1501  
AT 27" ADULT HEIGHT  
INSTALL THE 6700 ABOVE THE  
FOUNTAIN MOUNTING PLATE AT  
THE DIMENSION SHOWN FOR CORRECT  
BACKPANEL SPACING (IF APPLICABLE).  
BACK PANEL FOR BOTTLE FILLER  
(NOT SUPPLIED - OPTIONAL) IS NOT  
SHOWN FOR CLARITY.

- NOTES:
1. WHEN INSTALLING THIS UNIT, LOCAL, STATE OR FEDERAL CODES SHOULD BE ADHERED TO.
  2. BACK PANELS (OPTIONAL) NOT SHOWN FOR CLARITY.

6700 MOUNTING PLATE  
FOR USE WITH BOTTLE FILLER  
(SEE SHEET 1 FOR USE WITH  
DRINKING FOUNTAINS)

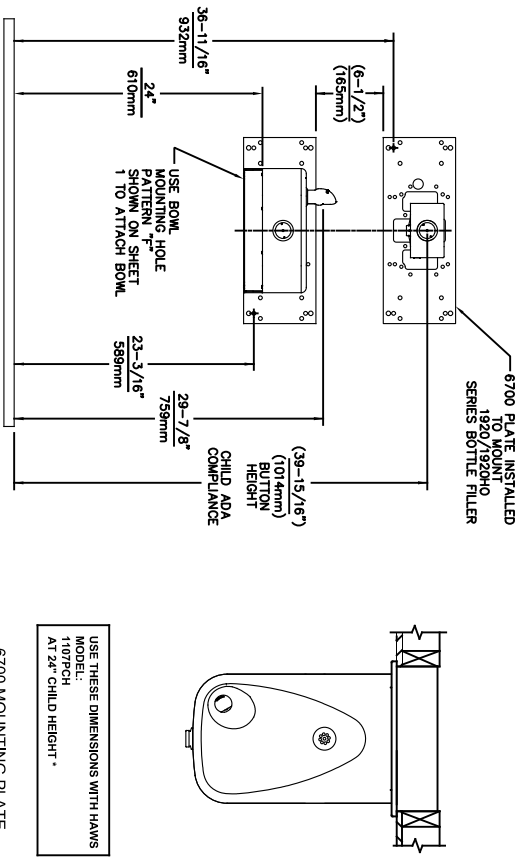


Since 1906

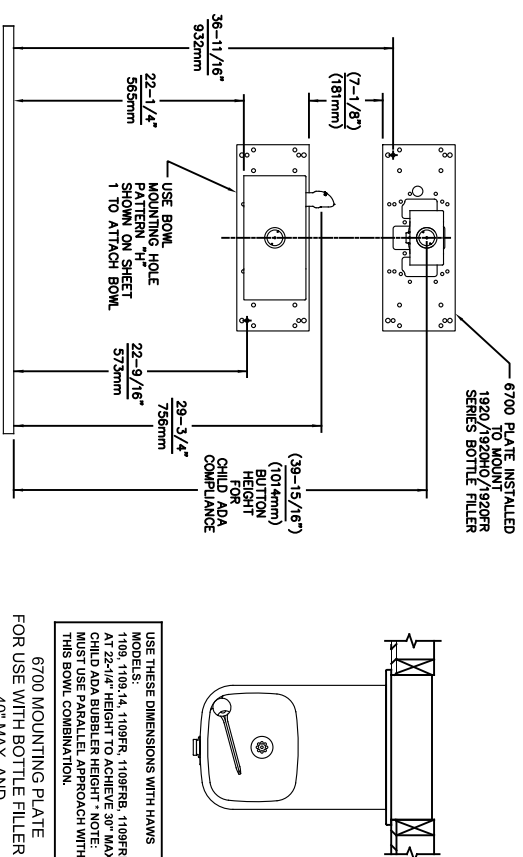
1456 KLEPPE LANE  
SPARKS, NEVADA 89431  
(775) 359-4712 FAX (775) 359-7424  
E-MAIL: HAWS@HAWS.CO.COM  
WEBSITE: WWW.HAWS.CO.COM

ECN NO. 5550  
DRAWN: FV  
APPROVED: FV  
REVISED PERBY: 02/11/25  
DATE: 05/14/20  
SCALE: 1:13  
DRAWING TYPE: INSTALLATION  
SHEET 5 OF 6

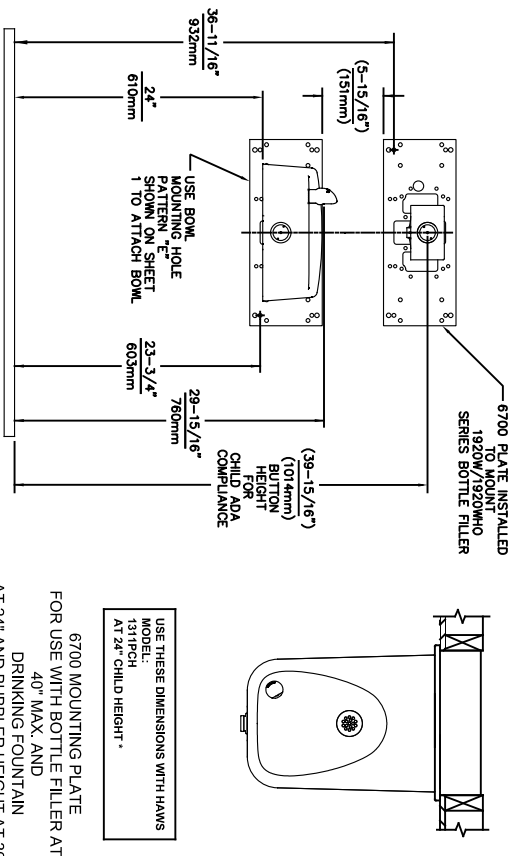
MODEL(S) 6700  
PART NUMBER 0002080016  
REVISION 26



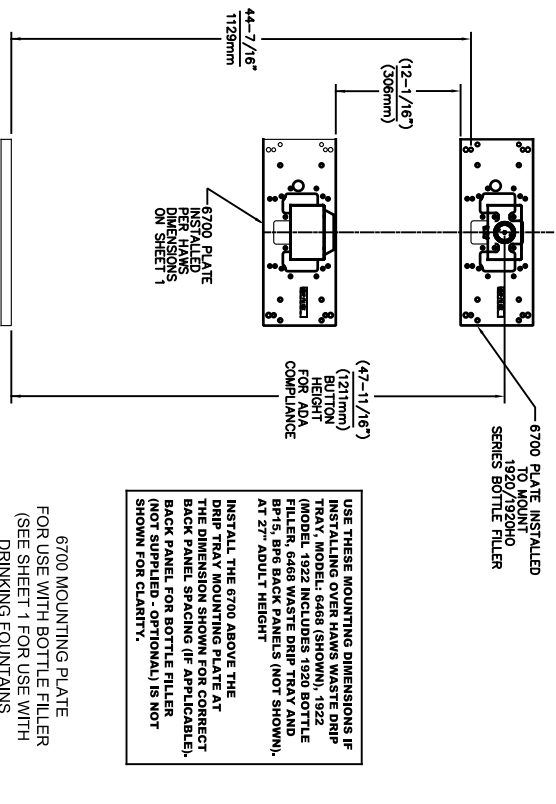
6700 MOUNTING PLATE  
FOR USE WITH BOTTLE FILLER AT  
40\" MAX. AND  
DRINKING FOUNTAIN  
AT 24\" AND BUBBLER HEIGHT AT 30\"  
MAX. FOR CHILD ADA HEIGHT  
(SEE SHEETS 1 & 2 FOR USE WITH  
DRINKING FOUNTAIN AT 27\" ADULT  
HEIGHT DIMENSIONS)



6700 MOUNTING PLATE  
FOR USE WITH BOTTLE FILLER AT  
40\" MAX. AND  
DRINKING FOUNTAIN  
BUBBLER HEIGHT AT 30\" MAX.  
FOR CHILD ADA HEIGHT  
MUST USE PARALLEL APPROACH  
WITH THIS BOWL COMBINATION  
(SEE SHEETS 1 & 2 FOR USE WITH  
DRINKING FOUNTAIN AT 27\" ADULT  
HEIGHT DIMENSIONS)



6700 MOUNTING PLATE  
FOR USE WITH BOTTLE FILLER AT  
40\" MAX. AND  
DRINKING FOUNTAIN  
AT 24\" AND BUBBLER HEIGHT AT 30\"  
MAX. FOR CHILD ADA HEIGHT  
(SEE SHEETS 1 & 4 FOR USE WITH  
DRINKING FOUNTAIN AT 27\" ADULT  
HEIGHT DIMENSIONS)



6700 MOUNTING PLATE  
FOR USE WITH BOTTLE FILLER  
(SEE SHEET 1 FOR USE WITH  
DRINKING FOUNTAINS  
AND WASTE DRIP TRAY)



Since 1906

1456 KLEPPE LANE  
SPARKS, NEVADA 89431  
(775) 359-4712 FAX (775) 359-7424  
E-MAIL: HAWS@HAWS.CO.COM  
WEBSITE: WWW.HAWS.CO.COM

ECN NO. REVISED PERBY: MODEL(S)  
5893 1 ECN: 6148 JG  
DRAWN: DATE: CHKD:  
FV 07/26/23 JG  
APPROVED: DATE: SCALE: 1:13 DRAWING TYPE: INSTALLATION SHEET A OF 6  
6700 PART NUMBER 0002080016 REVISION 26