

## FEATURES & BENEFITS

### CONSTRUCTION

Rugged ADA accessible 18 gauge Type 304 Stainless Steel swirl design bowl, 14 gauge Type 304 Stainless Steel bracket, and a vandal-resistant bottom plate provides a long lasting unit with added peace of mind.

### QUALITY CONTROL

Both fountains are pre-built and fully water and pressure tested to ensure proper functionality.

### MOUNTING

3/16" (.47 cm) thick steel mounting plate (sold separately) is larger, thicker and stronger than any other plate in the industry, and shall include the all-thread studs, nuts, and washers which allows for easy installation to a framed wall. (P-trap and stop require rear access)

### FOUNTAIN VALVES

The push-button activated valves have an all stainless steel body, with chrome plated brass push button assembly which allows for front access to water stream adjustment, water control cartridge, and water supply strainer replacement without having to go through the bottom plate. Operating pressure range of 30 to 90 psi (2.1 to 6.2 bar).

### BUBBLER HEADS

Polished chrome-plated brass bubbler heads with integral laminar flow prevents splashing while providing a superior flow pattern. The integral 11/16" dia. basin shank and stainless anti-rotation roll pin for vandal resistance strength. Shielded, angled stream opening provides a steady source of drinking water at .45 gpm.

### VANDAL RESISTANT

The bubbler heads, push buttons, round bowls, drain strainers and bottom plates are locked in place, discouraging unwanted vandal tampering.



## SPECIFICATIONS

Model 1011B Hi-Lo wall mounted barrier-free vandal-resistant drinking fountain shall include dual 18 gauge Type 304 Stainless Steel satin finish basins with integral swirl design, 14 gauge Type 304 Stainless Steel wall bracket, 3/16" (.47 cm) thick steel in-wall mounting plate, 100% lead-free waterways, vandal-resistant push-button operated stainless steel valves with front-accessible cartridge and flow adjustment, polished chrome-plated brass vandal-resistant bubbler heads with integral laminar anti-squirt flow, chrome-plated brass vandal-resistant waste strainers, vandal-resistant bottom plates, stainless steel satin finish back panel, high and low fountain mounting levels, and 1-1/4" O.D. (3.2 cm) waste pipes. (P-trap and stop require rear access) In extreme environments related to heat and cold, product(s) must be protected from damage/exposure due to these extreme conditions.

## APPLICATIONS

Perfect for either public or private indoor/outdoor settings, Model 1011B is a great fit in areas where aesthetics are important to the overall appeal of the architecture. This series is precisely mounted, making it a nice addition to any surrounding. Beautiful satin finish helps to maintain the fountains overall appeal, so it always remains looking as new as it did when it was installed. Specifically, this type of wall mounted drinking fountain may be placed in settings such as: schools and other locations in and around office buildings where the temperature remains above freezing. Model meets all current Federal Regulations for the disabled including those in the Americans with Disabilities Act. Haws manufactures drinking fountains, faucets and electric water coolers to be lead-free by all known definitions including NSF/ANSI/CAN 61- Section 9, NSF/ANSI/CAN 372, California Proposition 65, and the Federal Safe Drinking Water Act. Product is compliant to California Health and Safety Code 116875 (AB 1953-2006), and 116876 (AB 100) "NSF/ANSI/CAN 61: Q ≤ 1".



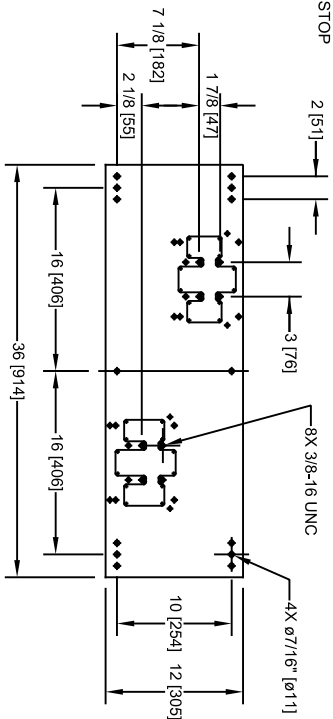
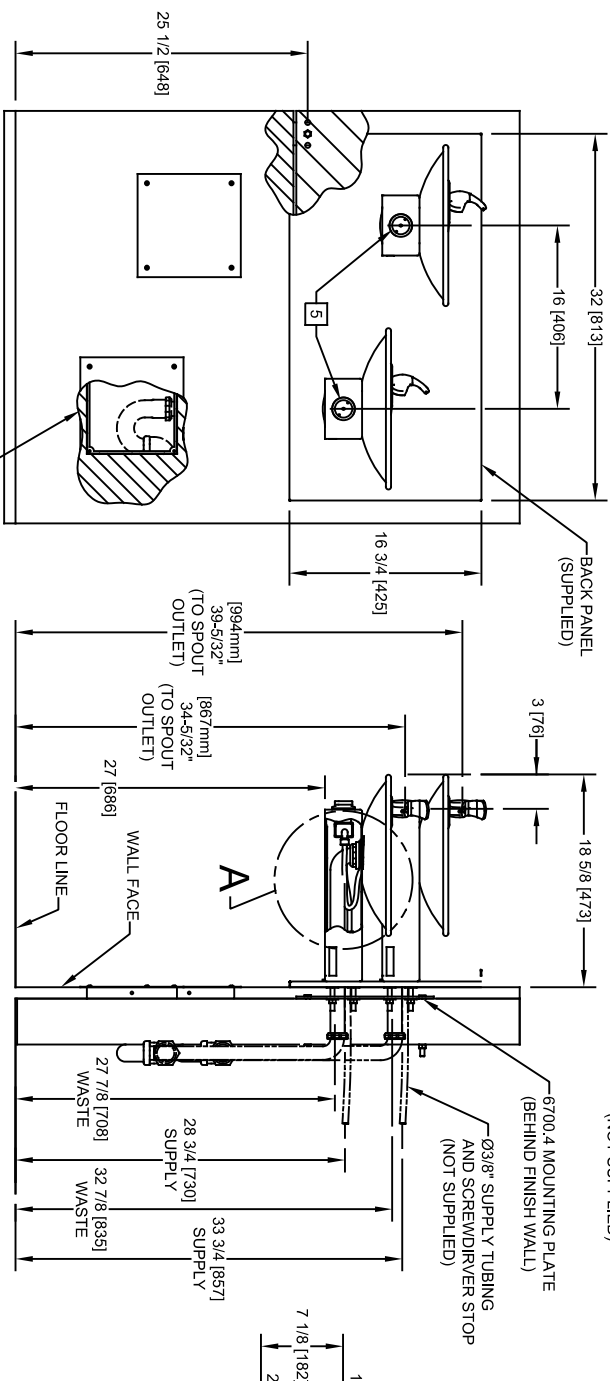
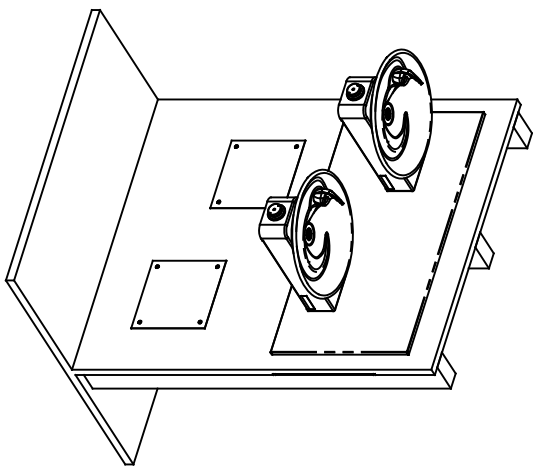
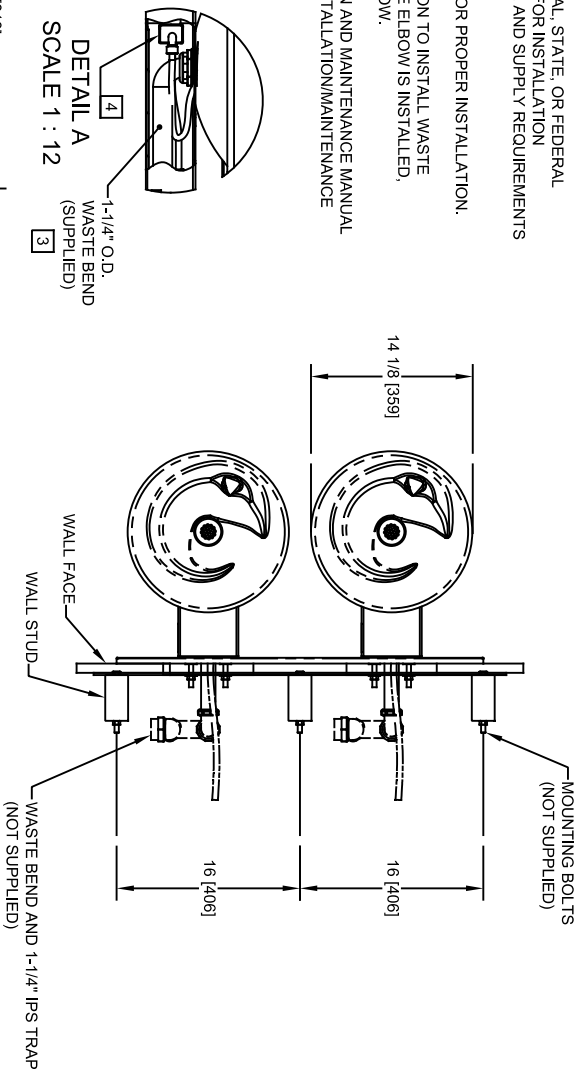
## OPTIONS

- Water Filter: Model 6480 filter kit with 3000 gallon carbon block filter, filter head, and mounting bracket.
- Access Panel: Model 6603, satin finish stainless steel access panel. Includes frame and screws.
- Support Frame: Model 6800 In-wall floor mounted fixture support legs, welded steel 4-bolt floor flanges, and supplied with 'U' bolts and hardware.

For more information, visit [www.hawesco.com](http://www.hawesco.com) or call (888) 640-4297.


NOTES:

1. HOLD ROUGH-IN DIMENSIONS  $\pm 1/8"$  (3.2mm).
2. WHEN INSTALLING THIS UNIT, LOCAL, STATE, OR FEDERAL CODES SHOULD BE ADHERED TO FOR INSTALLATION DIMENSIONS (LOCATIONS), WASTE AND SUPPLY REQUIREMENTS OTHER THAN SHOWN.
3. INSTALLER MUST PROVIDE TRAP FOR PROPER INSTALLATION.
4. REMOVE VALVE FROM PUSH BUTTON TO INSTALL WASTE ELBOW ONTO BOWL. AFTER WASTE ELBOW IS INSTALLED, REINSTALL VALVE AND ADJUST FLOW.
5. REFER TO 5874 SERIES OPERATION AND MAINTENANCE MANUAL FOR PUSH BUTTON AND VALVE INSTALLATION/MAINTENANCE INSTRUCTIONS.



6700.4 MOUNTING PLATE  
MUST BE INSTALLED BEFORE FINISH WORK.  
THIS PLATE IS REQUIRED - SOLD SEPARATELY.

OPTIONAL TRAP ACCESS PANEL  
MODELS 6603 AND 6603HPS

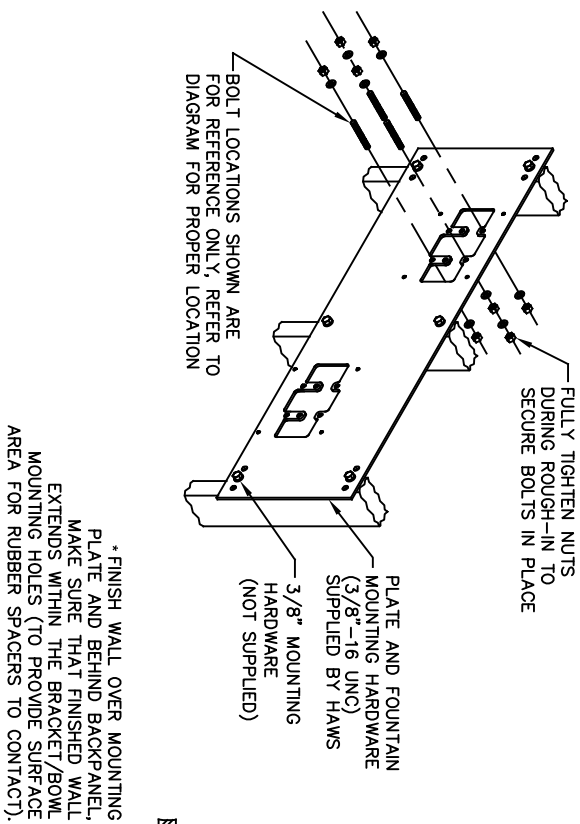
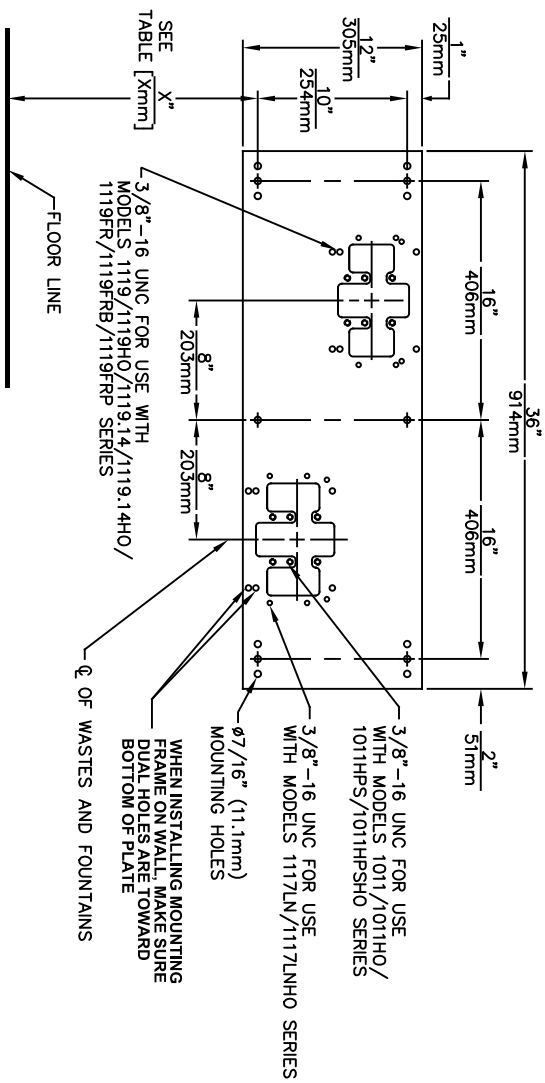


1456 KLEPPE LANE  
SPARKS, NEVADA 89431  
(775) 359-4712 FAX (775) 359-7424  
E-MAIL: HAWS@HAWS.CO.COM  
WEBSITE: WWW.HAWS.CO.COM

ECN NO. REVISED PER BY: MODEL(S)  
DRAWN: ECN 6125 FV  
RM 0598 JC  
DATE: 10/22/24  
SCALE: 1:1  
DRAWING TYPE: INSTALLATION  
SIZE: A  
SHEET: 1 OF 1

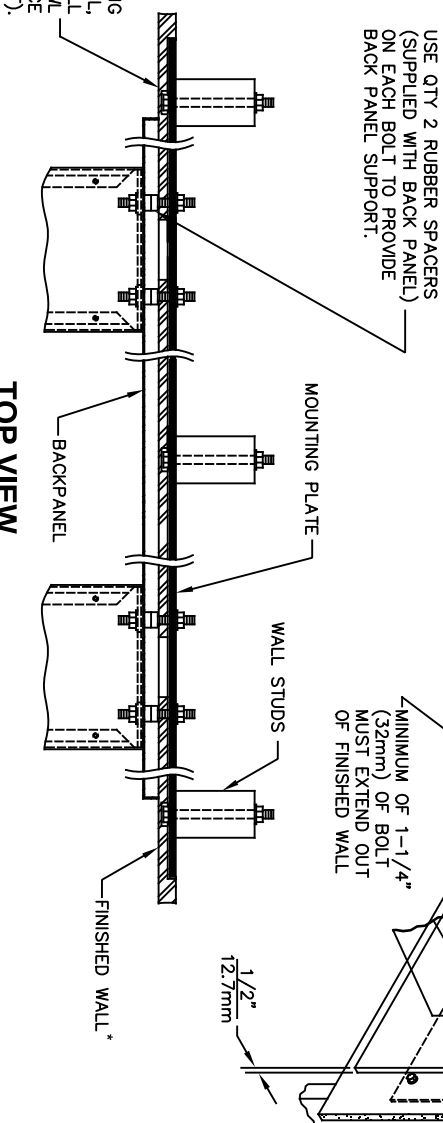
1011/1011HPS

0002076520.D  
REVISION: 22



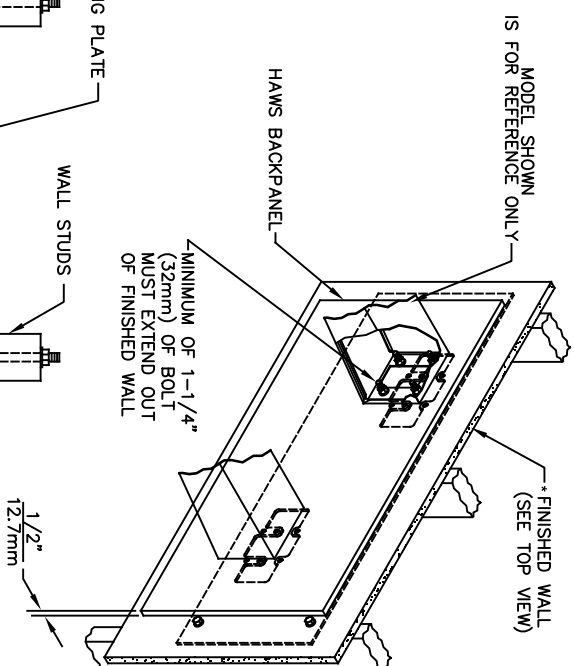
## CAUTION

REGARDING CONCRETE/MASONRY WALL MOUNTING: DO NOT SECURE MOUNTING PLATE TO SAME SIDE OF WALL AS FOUNTAIN. AVOID COMPROMISING INTEGRITY OF WALL WHEN ANCHORING FOUNTAIN. IT IS RECOMMENDED THAT INSTALLER CALL TECHNICAL SUPPORT IF THERE ARE ANY QUESTIONS AS TO HOW TO OBTAIN A PROPER ANCHOR IN CONCRETE/MASONRY WALLS. 1-800-766-5612



MODEL	
DIMENSION	1011/HO/HPS
"X"	25-1/2" [648mm]
LOWER SUPPLY	28-3/4" [730mm]
LOWER WASTE	27-7/8" [708mm]
UPPER SUPPLY	33-3/4" [857mm]
UPPER WASTE	32-7/8" [835mm]
MODEL	
DIMENSION	1119/HO
"X"	27-5/8" [702mm]
LOWER SUPPLY	29-5/8" [752mm]
LOWER WASTE	30-3/4" [781mm]
UPPER SUPPLY	35-3/8" [905mm]
UPPER WASTE	36-1/2" [927mm]
MODEL	
DIMENSION	1119FR
"X"	27-5/8" [702mm]
SUPPLY	SEE FREEZE VALVE ROUGH-IN
WASTE	

MODEL	
DIMENSION	1117/HO
"X"	27" [686mm]
LOWER SUPPLY	29-1/2" [749mm]
LOWER WASTE	29-1/4" [743mm]
UPPER SUPPLY	35-1/2" [902mm]
UPPER WASTE	35-1/4" [895mm]



## TOP VIEW

ECN NO.		REVISED PER BY:		MODEL(S)	
ECN 6148		JG		6700.4	
DRAWN:	DATE:	CHK'D:			
C.L.	04-29-93	JG			
APPROVED:	DATE:				
FV	02/11/25				
SCALE:	N/A	DRAWING TYPE:			
INSTALLATION		SIZE:	A		
SHEET 1		OF		1	
REVISION		20			
PART NUMBER		0002080023			