



INSTALLATION, OPERATION & MAINTENANCE INSTRUCTIONS

1455 Kleppe Lane ♦ Sparks, NV 89431-6467 ♦ (775) 359-4712 ♦ Fax (775) 359-7424
E-mail: haws@hawsco.com ♦ website: www.hawsco.com

No. 0510002299 (1)

Model 8605SS Config STD-UD Single Entry Stainless Steel Emergency Shower & Eye/Face Wash Booth with Universal Drain

NOTE TO INSTALLER: Please leave this information with the Maintenance Department.

LIMITED WARRANTY

HAWS warrants that all of its products are guaranteed against defective material or poor workmanship for a period of **one year from the date of shipment**. The foregoing notwithstanding, *HAWS* warrants certain specific products or components thereof for an adjusted period. A list of these excepted products and components and a description of their respective warranty terms may be found here: www.hawsco.com/warranty. *HAWS*' liability under this warranty shall be discharged by furnishing without charge F.O.B. *HAWS* factory any goods, or part thereof, which shall appear to the Company upon inspection to be of defective material or not of first-class workmanship, provided that a claim is made in writing to Company within a reasonable period after receipt of the product. Where claims for defects are made, the defective part or parts shall be delivered to the Company, prepaid, for inspection. *HAWS* shall not be liable for the cost of repairs, alterations or replacements, or the labor required to implement them, or for any expense connected therewith made by the owner or owner's agents, except upon written authority from *HAWS*. *HAWS* shall not be liable for any damages caused by defective materials or poor workmanship, except for replacements, as provided above. Buyer agrees that *HAWS* has made no other warranties either express or implied in addition to those above stated, except that of title with respect to any of the products or equipment sold hereunder and that *HAWS* shall not be liable for general, special, incidental, or consequential damages claimed to arise under the contract of sale.

Equipment manufactured by *HAWS* is warranted to function if installation and maintenance instructions provided are adhered to. The units also must be used for the purpose for which they were intended. Any *HAWS* emergency equipment is intended to supplement first-aid treatment. Due to widely varying conditions, *HAWS* cannot guarantee that the use of this emergency equipment will prevent serious injury or the aggravation of existing or prior injuries.

EXCEPT AS EXPRESSLY STATED HEREIN, HAWS HEREBY DISCLAIMS ALL WARRANTIES, WHETHER EXPRESS OR IMPLIED, ARISING BY LAW OR OTHERWISE, INCLUDING WITHOUT LIMITATION, ANY IMPLIED WARRANTIES OF MERCHANTABILITY AND FITNESS FOR A PARTICULAR PURPOSE. THIS WARRANTY MAY NOT BE MODIFIED OR EXTENDED WITHOUT THE WRITTEN CONSENT OF HAWS. REMEDIES AND REPLACEMENTS STATED HEREIN ARE EXCLUSIVE. IN NO EVENT SHALL HAWS BE LIABLE FOR ANY SPECIAL, PUNITIVE, CONSEQUENTIAL OR INCIDENTAL DAMAGES TO ANY PERSON INCLUDING BUT NOT LIMITED TO DAMAGES FOR LOSS OF USE OR PROFITS, SUBSTITUTE PRODUCTS OR COSTS, PROPERTY DAMAGE, OR OTHER MONETARY LOSS.

SHOULD YOU EXPERIENCE DIFFICULTY WITH THE INSTALLATION OF THIS MODEL PLEASE CALL:

TECHNICAL SUPPORT: 1-800-766-5612
FOR CUSTOMER SERVICE: 1-888-640-4297

LOCATION OF UNIT: The Model 8605SS Config STD-UD Emergency Shower & Eye/Face Wash Booth should be installed in close proximity to potential accident areas. It should be clearly identified free from obstructions and easy to access.

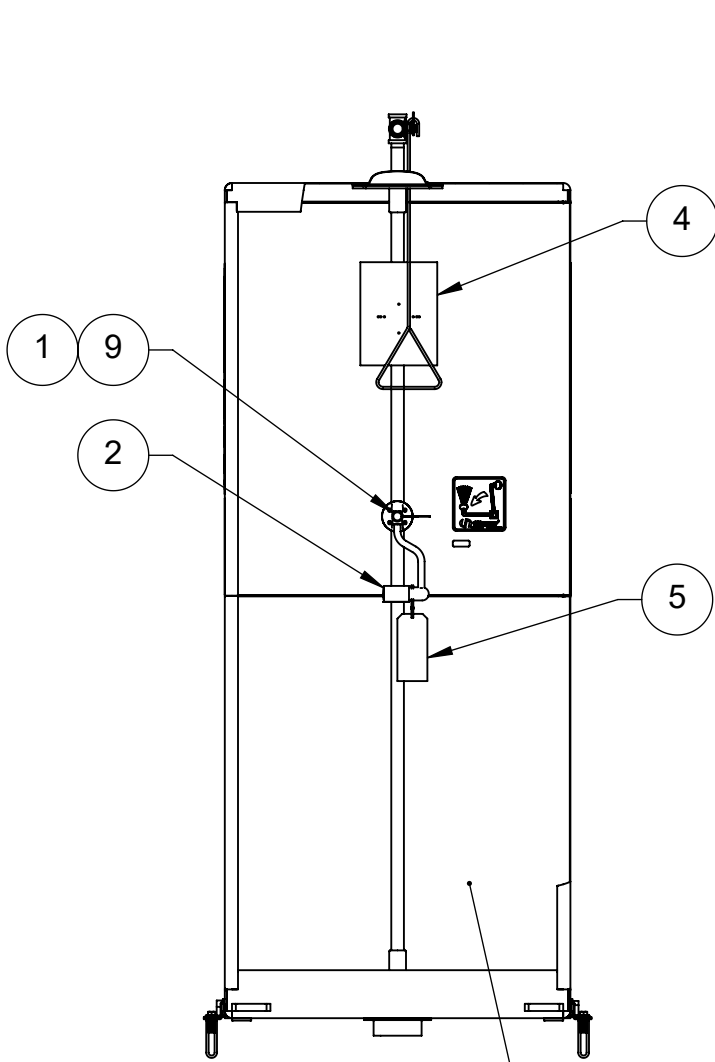
SUPPLY LINE: The minimum recommended line size is 1" IPS with 30-90 psi (2-6 ATM) flowing pressure. Where sediment or mineral content is a problem, an inlet filter is recommended.

PLUMBING CONNECTIONS: Inlet supply is female 1" NPT. Waste outlet is 4" NPT (F).

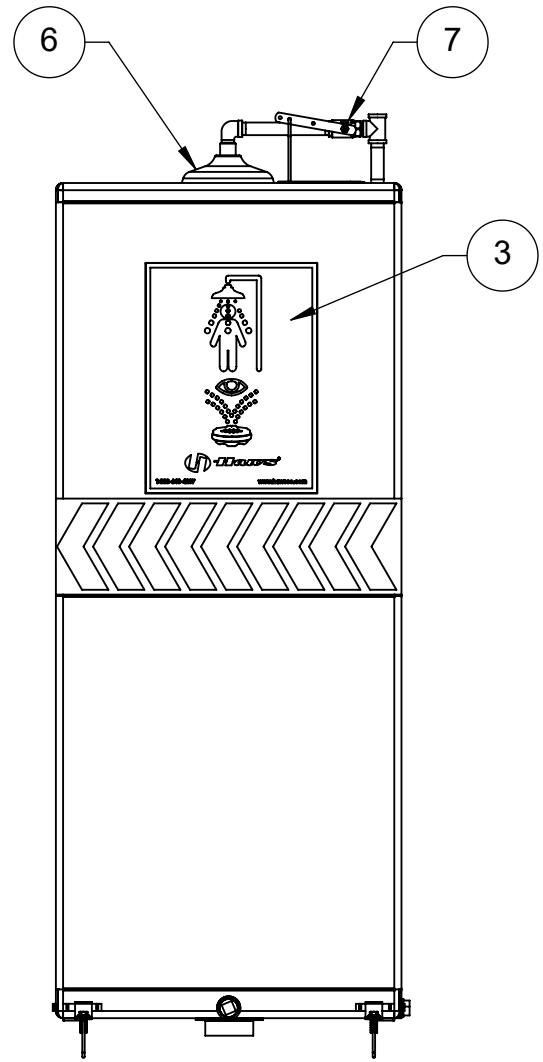
TROUBLESHOOTING	
PROBLEM	REPAIR CHECKLIST
1. No flow.	1. Check the main shut-off valve.
2. Insufficient water flow.	2. Verify minimum 30psi (2 ATM) flowing supply line pressure.
3. Insufficient water flow on eyewash, however, shower is sufficient.	3. Probable clogging of flow control due to inadequate line flushing. Unscrew eye/face wash head and remove the four screws to disassemble the head. Clean flow control and reassemble head. See Installation Drawing (page 5) for details.
4. Insufficient water flow at the showerhead, however, eyewash is sufficient.	4. Probable clogging of flow control inside showerhead. Unscrew showerhead off of elbow and clean rubber flow control.
5. Eyewash stream does not meet desired eye level.	5. Possible blocked flow control, see above solution. Possible non-leveled eyewash assembly.
6. Water does not drain properly.	6. Check the main waste line of your building to see if it does handle the capacity required for the entire drainage system.


For more information on Haws products, see our website: www.hawasco.com

ITEM	DESCRIPTION	PART NO.
1	EYE/FACE WASH HEAD W/ 4.2 GPM FLOW CONTROL	0110001578
2	VALVE REPAIR KIT	VRK7650
3	PULL ROD	SP202
4	SHOWER/EYEWASH SIGN	SP178
5	TEST TAG	SP170
6	SHOWER HEAD	SP829SS
7	SHOWER VALVE ASSEMBLY	0006581890
8	SHOWER CURTAIN	0510002178
9	EYE/FACE WASH DUST COVER	9091



CURTAIN, ITEM 8
(NOT SHOWN FOR CLARITY)



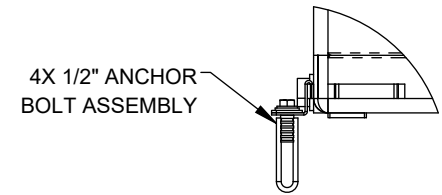
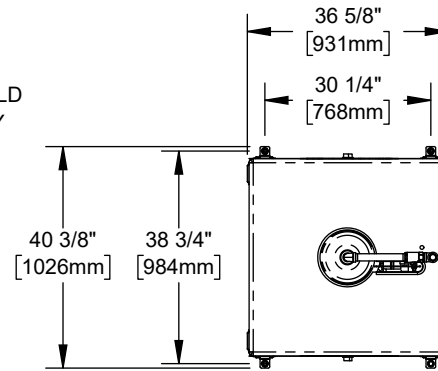
 Haws® Since 1906			1455 KLEPPE LANE SPARKS, NEVADA 89431 (775) 359-4712 FAX (775) 359-7424 E-MAIL: HAWS@HAWSO.COM WEBSITE: WWW.HAWSO.COM		
ECN: 6198	REV. ECN: 6198	BY: JL	MODEL(S)		PART NUMBER
DRAWN: JL	DATE: 03/04/25	CHKD: FV	8605SS BOOTH WITH UNIVERSAL DRAIN		0510002299
APPROVED: JL	DATE: 03/12/25		SCALE: 1:50	DRAWING TYPE: PARTS BREAKDOWN	REVISION 1
				SIZE: A	SHEET 1 OF 1

WHEN ORDERING PARTS, PLEASE
SPECIFY PART NUMBER

NOTES:

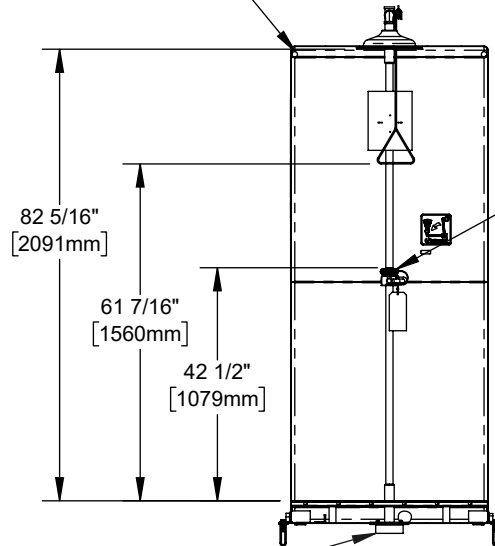
1. WHEN INSTALLING THIS UNIT, LOCAL, STATE, OR FEDERAL CODES SHOULD BE ADHERED TO FOR INSTALLATIONS (LOCATIONS), WASTE AND SUPPLY REQUIREMENTS OTHER THAN SHOWN.
2. KEEP ENTRY WAY AND INSIDE OF BOOTH CLEAR OF OBSTRUCTIONS.
3. DIMENSION MAY VARY $\pm 1/2"$.

(NOTES CONTINUED ON SHEET 2)

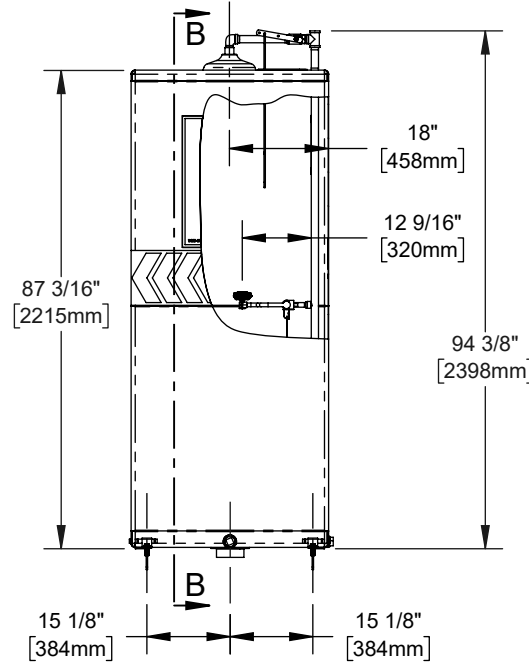


DETAIL A

INSTALL SHOWER CURTAIN TO GUIDE

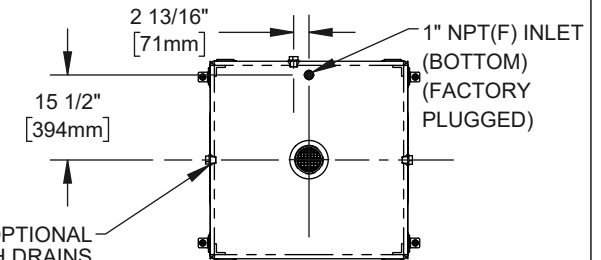
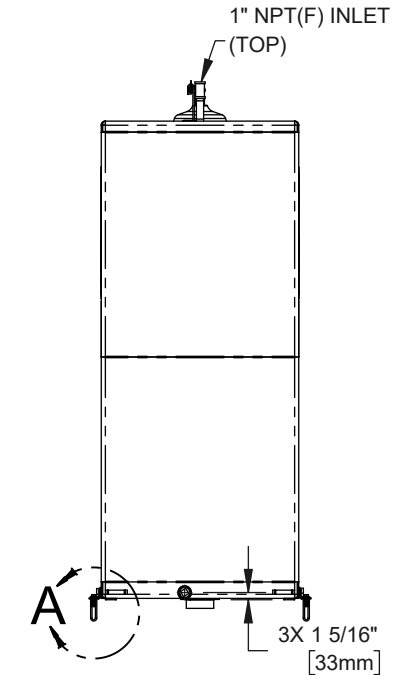


EYE/FACE WASH ASSEMBLY WITH 4.2 GPM FLOW CONTROL

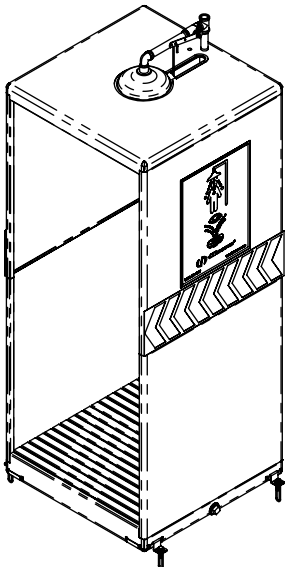


SECTION B-B

OPTIONAL 4" NPT(F) WASTE SHOWN (SUPPLIED WITH COVER PLATE TO PLUG)

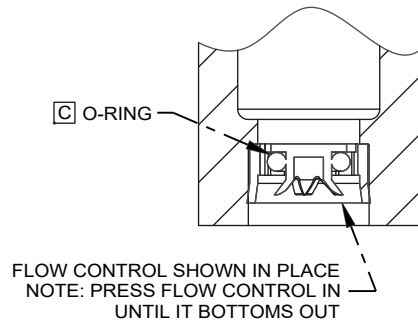
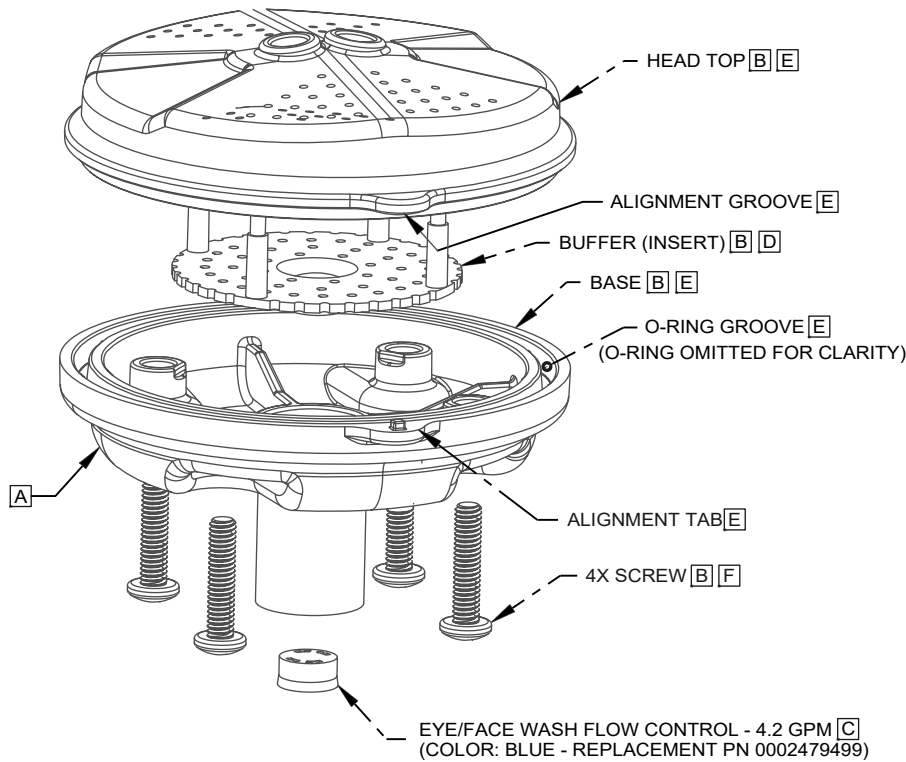


3X 1-1/2" NPT(F) OPTIONAL SIDE FLUSH DRAINS (SUPPLIED WITH PLUGS)

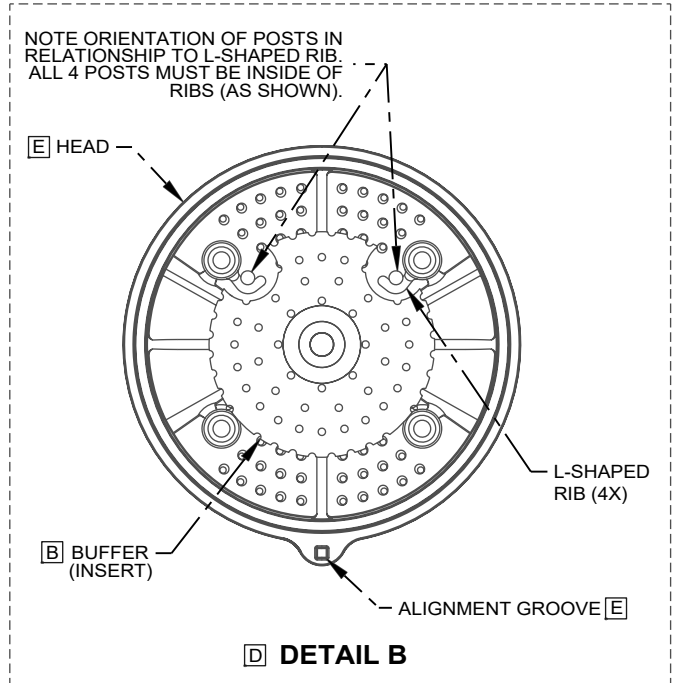
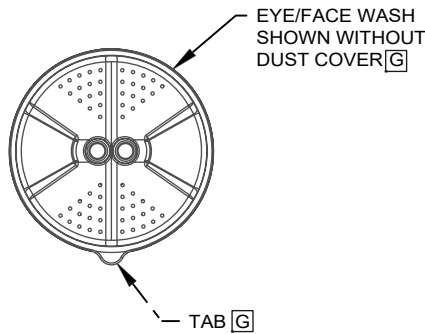


1455 KLEPPE LANE
SPARKS, NEVADA 89431
(775) 359-4712 FAX (775) 359-7424
E-MAIL: HAWS@HAWS.CO.COM
WEBSITE: WWW.HAWS.CO.COM

ECN: 6198	REV. ECN: 6198	BY: JL	MODEL(S)	PART NUMBER
DRAWN: JL	DATE: 03/04/25	CHKD: FV	8605SS BOOTH WITH UNIVERSAL DRAIN	0510002299.D
APPROVED: JL	DATE: 03/12/25	SCALE: 1:50	DRAWING TYPE: INSTALLATION	REVISION
				1
				SHEET 1 OF 3



[C] DETAIL A

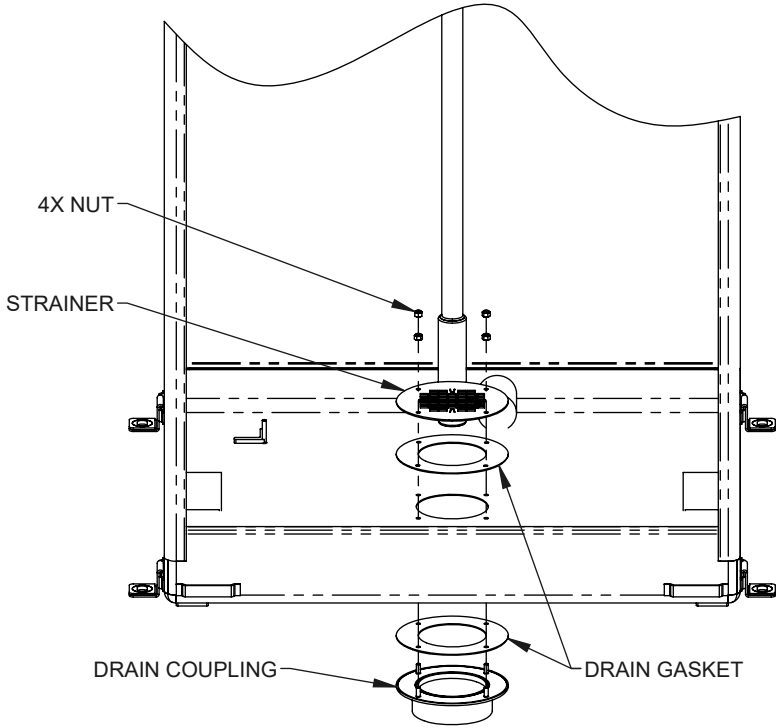


4. FLOW CONTROL CLEANING STEPS:

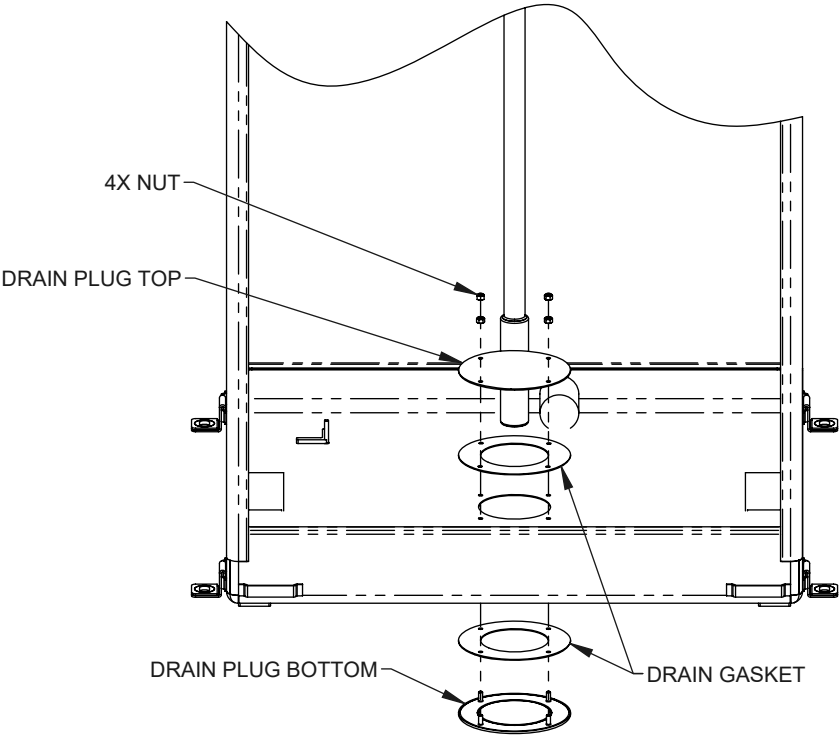
- UNSCREW EYE/FACE WASH ASSEMBLY FROM ADAPTER (NOT SHOWN FOR CLARITY).
- REMOVE SCREWS (QTY. 4) FROM EYE/FACE WASH ASSEMBLY IN ORDER TO SEPARATE EYE/FACE WASH HEAD TOP FROM THE BASE AND REMOVE BUFFER (INSERT).
- REMOVE EXISTING FLOW CONTROL FROM BASE BY PUSHING IT OUT FROM THE TOP AND CAREFULLY REMOVE ANY DEBRIS LODGED BETWEEN O-RING AND HOUSING OR OPENINGS. ALSO, CHECK FOR ANY SEDIMENT OR MINERAL DEPOSITS BLOCKING OPENINGS. EXERCISE CAUTION NOT TO DAMAGE OR LOSE O-RING IN THE PROCESS. ALL OPENINGS ON FLOW CONTROL MUST BE FREE AND CLEAR OF ANY OBSTRUCTIONS FOR FLOW CONTROL TO FUNCTION PROPERLY. REINSTALL FLOW CONTROL. SEE **DETAIL A** FOR ORIENTATION.
- REINSERT BUFFER (INSERT) INTO EYE/FACE WASH HEAD NOTING ORIENTATION OF POST IN RELATIONSHIP TO L-SHAPED RIB AS SHOWN ON **DETAIL B**.
- REASSEMBLE EYE/FACE WASH HEAD, MAKING SURE THAT ALIGNMENT GROOVE ON EYE/FACE WASH HEAD LINES UP WITH ALIGNMENT TAB ON BASE & O-RING IS SEATED IN O-RING GROOVE.
- REINSTALL SCREWS (QTY. 4) INTO THE EYE/FACE WASH HEAD ASSEMBLY AND TIGHTEN SNUG ENSURE A WATER-TIGHT SEAL.
- REASSEMBLE EYE/FACE WASH ASSEMBLY (TAB ORIENTED TOWARDS THE BOTTOM IN CLOSED POSITION) - DO NOT OVER-TIGHTEN. PLACE DUST COVER OVER EYE/FACE WASH HEAD.

		1455 KLEPPE LANE SPARKS, NEVADA 89431 (775) 359-4712 FAX (775) 359-7424 E-MAIL: HAWS@HAWSO.COM WEBSITE: WWW.HAWSO.COM	
ECN: 6198	REV. ECN: 6198	BY: JL	MODEL(S)
DRAWN: JL	DATE: 03/04/25	CHKD: FV	8605SS BOOTH WITH UNIVERSAL DRAIN
APPROVED: JL	DATE: 03/12/25	SCALE: 1:18	DRAWING TYPE: INSTALLATION
PART NUMBER 0510002299.D			REVISION 1
SIZE: A			SHEET 2 OF 3

CENTER DRAIN CONFIGURATION DETAILS
(GRATE REMOVED FOR CLARITY)



DRAIN COUPLING ASSEMBLY
(ALL PARTS SUPPLIED)



DRAIN PLUG ASSEMBLY
(ALL PARTS SUPPLIED)



1455 KLEPPE LANE
SPARKS, NEVADA 89431
(775) 359-4712 FAX (775) 359-7424
E-MAIL: HAWS@HAWSO.COM
WEBSITE: WWW.HAWSO.COM

ECN: 6198	REV. ECN: 6198	BY: JL	MODEL(S)	PART NUMBER
DRAWN: JL	DATE: 03/04/25	CHKD: FV		0510002299.D
APPROVED: JL	DATE: 03/12/25	SCALE: 1:32	DRAWING TYPE: INSTALLATION	REVISION
				1
				SHEET 3 OF 3