

FEATURES & BENEFITS

CONSTRUCTION

Rugged ADA accessible 18 gauge Type 304 Stainless Steel swirl design bowl, 14 gauge Type 304 Stainless Steel bracket and bottle filler, and vandal-resistant bottom plates provides a long lasting unit with added peace of mind.

BOTTLE FILLER

Vandal-resistant, 14-gauge Type 304 stainless steel bottle filler housing with touchless operation and 1 gpm (3.78 L) laminar flow.

BUBBLER HEAD

Polished chrome-plated brass bubbler head with integral laminar flow prevents splashing while providing a superior flow pattern. The integral 11/16" dia. basin shank and stainless anti-rotation roll pin for vandal resistance strength. Shielded, angled stream opening provides a steady, sanitary source of drinking water at .45 gpm.

FOUNTAIN VALVES

Bottle filler incorporates a touchless sensor operated stainless steel solenoid valve controlled by a transformer, and a pushbutton activated valve which offers the only all stainless-steel valve body that is machined out of solid bar stock and is fully serviceable through the front of the push button assembly offering access to the water control cartridge and integral water supply strainer on the fountain.

VANDAL RESISTANT

The bubbler head, push button, round bowl, drain strainer and bottom plate are locked in place, discouraging unwanted vandal tampering, and 30-second obstruction time-out to reduce tampering of sensor.

MOUNTING

Heavy-duty 16-gauge galvanized steel mounting frame with welded-in heavy-duty 10 gauge mounting plate with pre-punched mounting holes. Further convenience is given to the chiller with the integral fold-out shelf. Also included is an in-wall 3/16" thick steel mounting plate for the bottle filler.

OPTIONS

- Water Filter: Model 6480 filter kit with 3000 gallon carbon block filter, filter head, and mounting bracket.
- Mounting Plate: Model 6700R, on-wall mounting plate for model 1920.
- Bottle Filler Stand: Model BTL1001, add-on stainless steel stand to place bottle on when 1920 bottle filler is used.

For more information, visit www.hawsc.com or call (888) 640-4297.



SPECIFICATIONS

H1001.8 / HCR8 / MTGFR.SM / 1920HO / 6700 / BP15

Order these items to make up Model 1001.8-1920HO fountain with stainless steel back panel, bottle filler with stainless steel back plate, remote chiller and fountain mounting frame shown above.

FOR INDOOR USE ONLY

APPLICATIONS

Model H1001.8-1920HO wall mounted vandal-resistant ADA drinking fountain and motion activated bottle filler shall include an 18 gauge Type 304 Stainless Steel satin finish basin with integral swirl design, 14 gauge Type 304 Stainless steel wall bracket and bottle filler bracket, in-wall 3/16" thick steel mounting plate for the bottle filler, 100% lead-free waterways, touchless sensor operated solenoid valve with 30- second obstruction time-out on the bottle filler, and vandal-resistant push-button operated stainless-steel valve with front-accessible cartridge and flow adjustment on the fountain, polished chrome-plated brass vandal-resistant bubbler head with integral laminar anti-squirt flow, 1 gpm (3.78 L) laminar flow bottle filler, chrome plated brass vandal-resistant waste strainer, stainless steel satin finish back panel and louvered intrusion-proof grill, vandal-resistant bottom plates, and 1-1/4" (3.2 cm) O. D. waste pipe. (P-trap and stop require rear access). CSA certified and ADA accessible, ANSI/NSF 61, Section 9, lead free. The refrigeration system is hermetically sealed and delivers a minimum of 8 gph (30.3 L) of water at 50° F (10°C) cooled from 80° F (26.7° C) inlet water at 90° F (32.2°C) ambient. 115 Volts, 60Hz, rated watts: 370, full load amps: 5. Manufactured to be lead-free by all known definitions including NSF/ANSI/CAN 61-Section 9, NSF/ANSI/ CAN 372, California Proposition 65, and the Federal Safe Drinking Water Act. Product is compliant to California Health and Safety Code 116875 (AB 1953-2006), and 116876 (AB 100) "NSF/ANSI/CAN 61: Q ≤ 1". Haws electric water coolers comply with ARI Standard 1010 and ANSI A117.1, and are listed by Underwriter Laboratories to U.S. and Canadian standards.



CALLOUT LEGEND	
A	1/4" OD WATER OUTLET
B	3/8" OD WATER INLET
C	TEMPERATURE CONTROL
D	JUNCTION BOX
E	ELECTRICAL WIRING OPENING

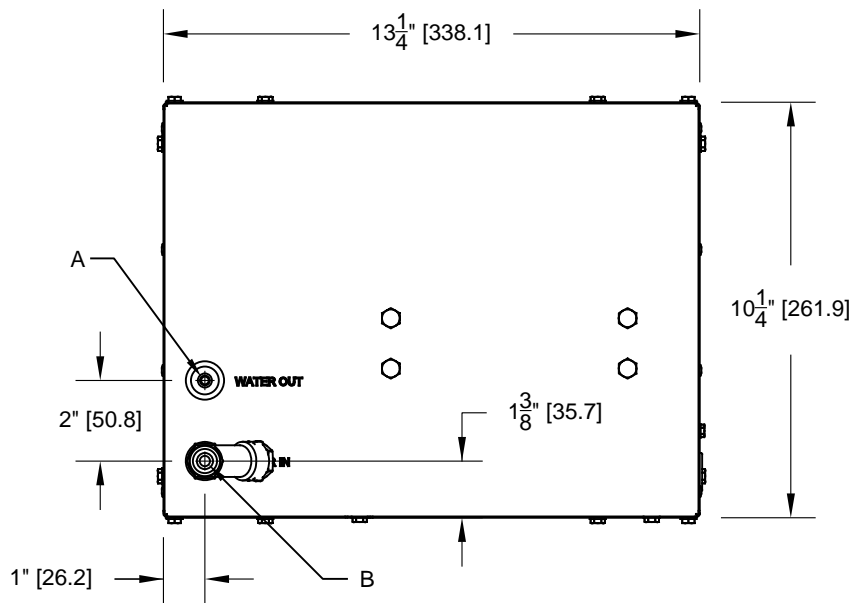


FIG. 2

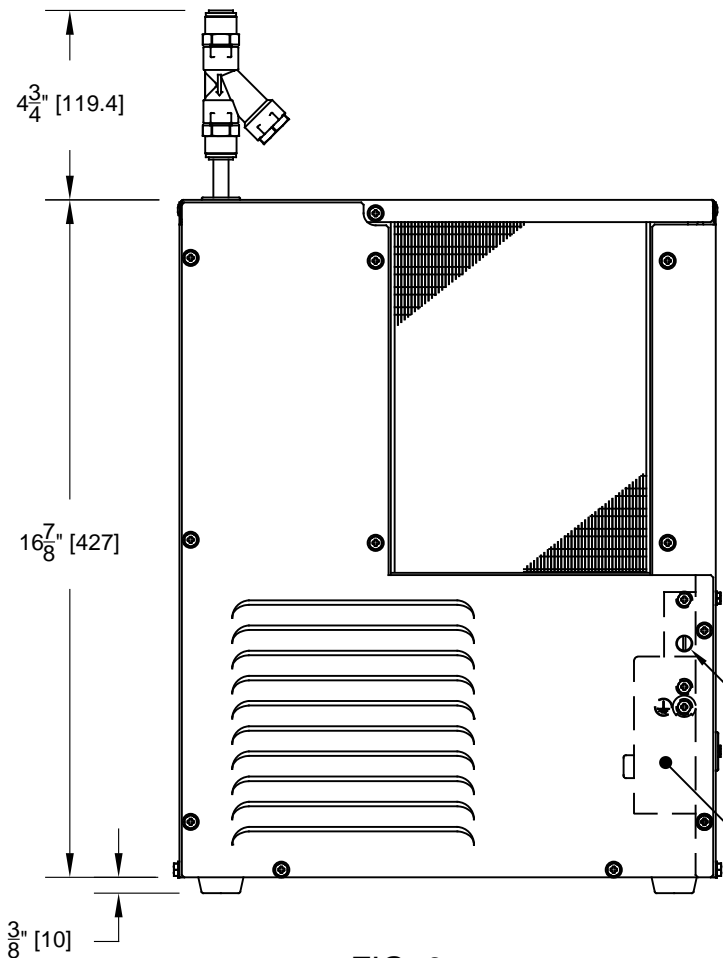


FIG. 3

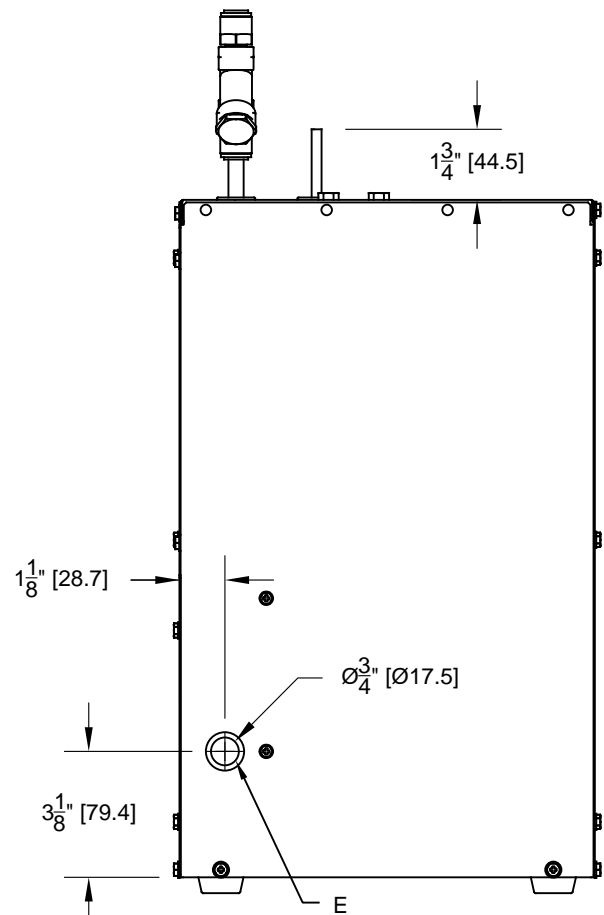


FIG. 4

		Haws [®]		1455 KLEPPE LANE SPARKS, NEVADA 89431 (775) 359-4712 FAX (775) 359-7424 E-MAIL: HAWS@HAWSCO.COM WEBSITE: WWW.HAWSCO.COM	
				ECN NO. 4997 DRAWN VVC APPROVED JL	REVISED PER BY ECN: 5401 DATE 01/25/16 DATE 02/05/19
SCALE: NA		DRAWING TYPE: INSTALLATION		SIZE: A	

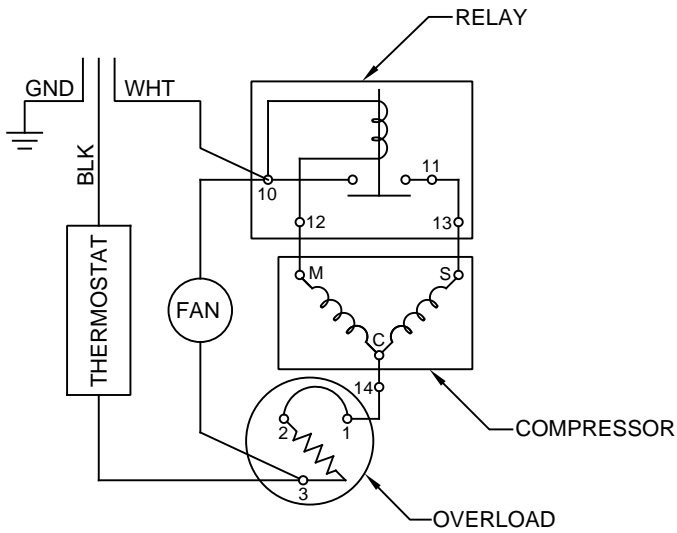


FIG. 5
WIRING DIAGRAM

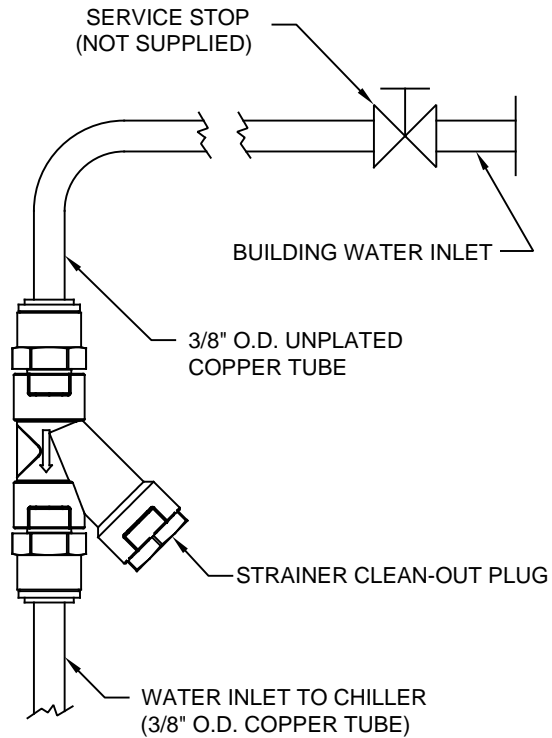
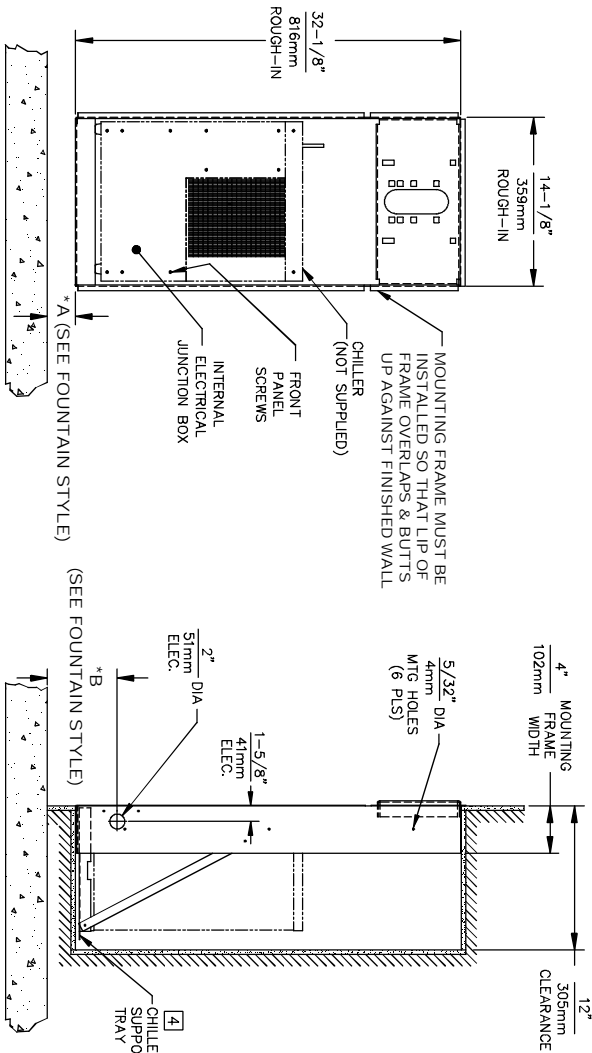


FIG. 6
WATER CONNECTION DIAGRAM

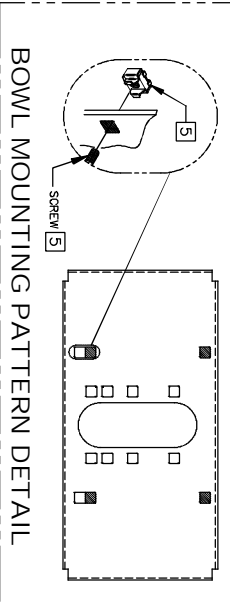
		1455 KLEPPE LANE SPARKS, NEVADA 89431 (775) 359-4712 FAX (775) 359-7424 E-MAIL: HAWS@HAWS.CO.COM WEBSITE: WWW.HAWS.CO.COM			
				ECN NO. 4997 DRAWN VWC APPROVED JL	REVISED PER ECN: 5401 DATE 01/25/16 DATE 02/05/19
SCALE: NA		DRAWING TYPE: INSTALLATION		SIZE: A	SHEET 2 OF 2



- CHILLER ELECTRICAL INSTALLATION**
1. ENSURE ELECTRICAL POWER IS OFF AND POWER MATCHES VOLTAGE, PHASE AND CYCLE LISTED ON CHILLER LABEL.
 2. REMOVE FRONT PANEL TO GAIN ACCESS TO INTERNAL JUNCTION BOX.
 3. HARDWIRE CHILLER THROUGH ITS SIDE WIRE IN ACCORDANCE WITH LOCAL, STATE OR FEDERAL ELECTRICAL CODES.
 4. REPLACE FRONT PANEL. DO NOT APPLY POWER UNTIL WATER SUPPLY IS CONNECTED AND ON.

MOUNTING FRAME INSTALLATION

1. THIS FRAME IS USED WITH SEVERAL DIFFERENT MODELS. SEE INSTALLATION INSTRUCTIONS RECEIVED WITH THE FOUNTAIN FOR PROPER LOCATIONS OF 5/16-18 PANEL NUT RETAINERS. FOR ROUGH-IN USE THE APPROPRIATE DIMENSIONS SHOWN ABOVE. WASTE AND SUPPLY HEIGHTS ARE ALSO DETAILED ON THE FOUNTAIN INSTALLATION INSTRUCTIONS.
2. HOLD ROUGH-IN DIMENSIONS ±1/8" (3.2mm).
3. WHEN INSTALLING THIS UNIT LOCAL, STATE OR FEDERAL CODES SHOULD BE ADHERED TO. FOR DIFFERENT INSTALLATION HEIGHTS OTHER THAN SHOWN, DIMENSIONS MARKED (*) MUST BE ADJUSTED ACCORDINGLY.
4. ALIGN HOLES IN CHILLER SUPPORT TRAY WITH HOLES IN FRAME AND FASTEN IN PLACE WITH #10 SHEET-METAL SCREWS SUPPLIED WITH UNIT.
5. FOUNTAIN REMOVAL: FIRST REMOVE SCREWS AND THEN SQUEEZE CLIPS ON NUT RETAINER TO POP OUT. INSTALL IS REVERSE OF REMOVAL.

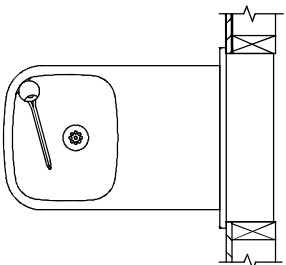


* IF YOUR FOUNTAIN IS THIS STYLE USE THESE DIMENSIONS

A	B
1-3/8" (35mm)	4-7/8" (124mm)

* IF YOUR FOUNTAIN IS THIS STYLE USE THESE DIMENSIONS

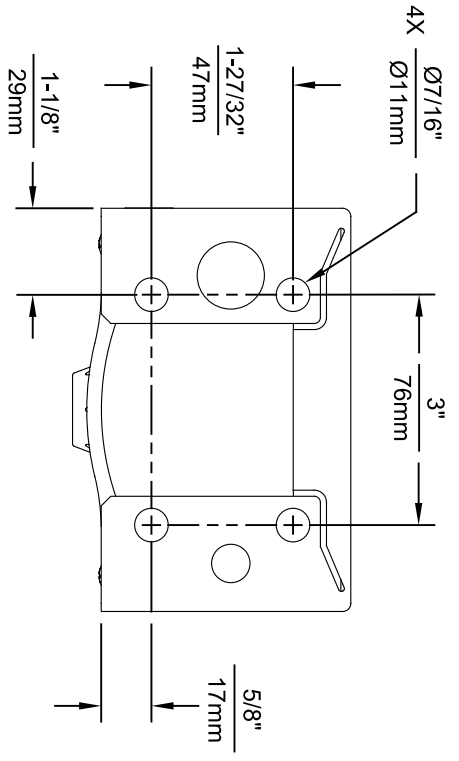
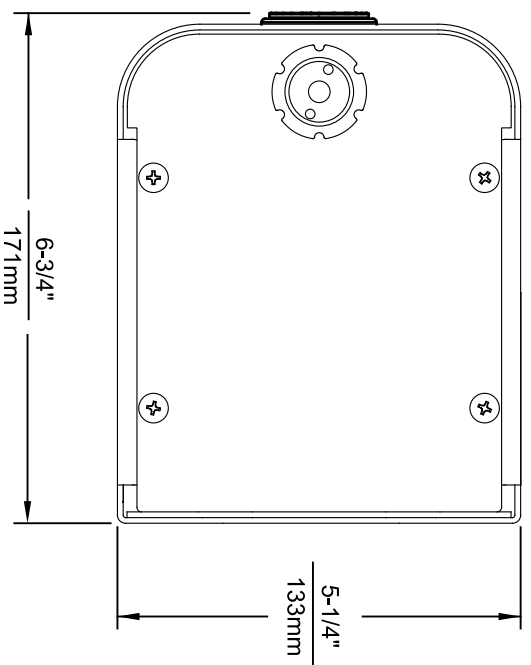
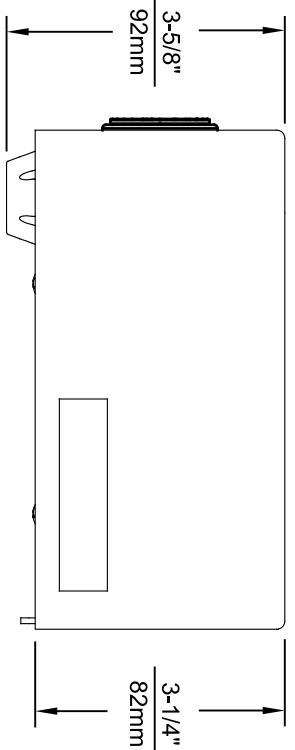
A	B
1-3/16" (30mm)	4-11/16" (119mm)



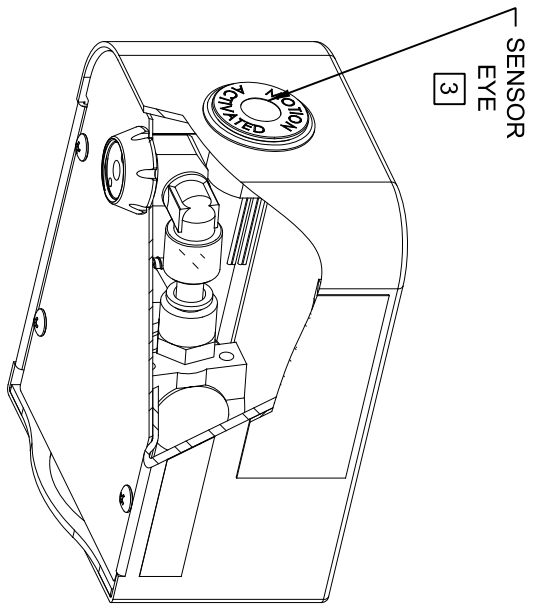
Haws Corporation

INFO FAX : 1-888-FAX-HAWS (1-888-329-4297)
 1455 Kleppe Ln, Sparks NV, 89431
 Phone: 775-359-4712 Fax: 775-359-7424
 Haws Ag Boehrweg 3 CH-3401 Burgdorf Switzerland
 Haws Mfg Pte Ltd 74 Sungai Kedut Loop Singapore 729531
 e-mail: Haws@hawsco.com website: www.hawsco.com

FORM NO. 108/97
 DATE: 08/97
 MODEL(S): MTGFR-SM
 INFO FAX DOC # 26843776
 SCALE: 1:16
 DRAWING TYPE: INSTALLATION/BACKPACK
 PART NUMBER: 0002080294
 DRAWING NUMBER: 06650A00
 REV: 14



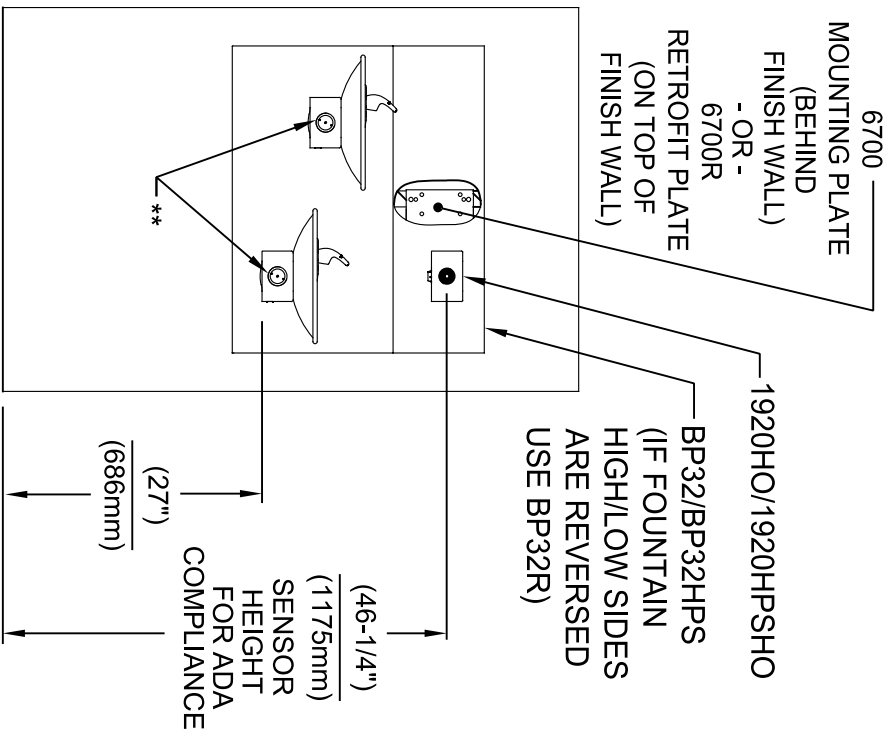
1920HO SERIES MOUNTING HOLE LOCATIONS
(3/8\"-16 UNC MOUNTING HARDWARE NOT SUPPLIED)



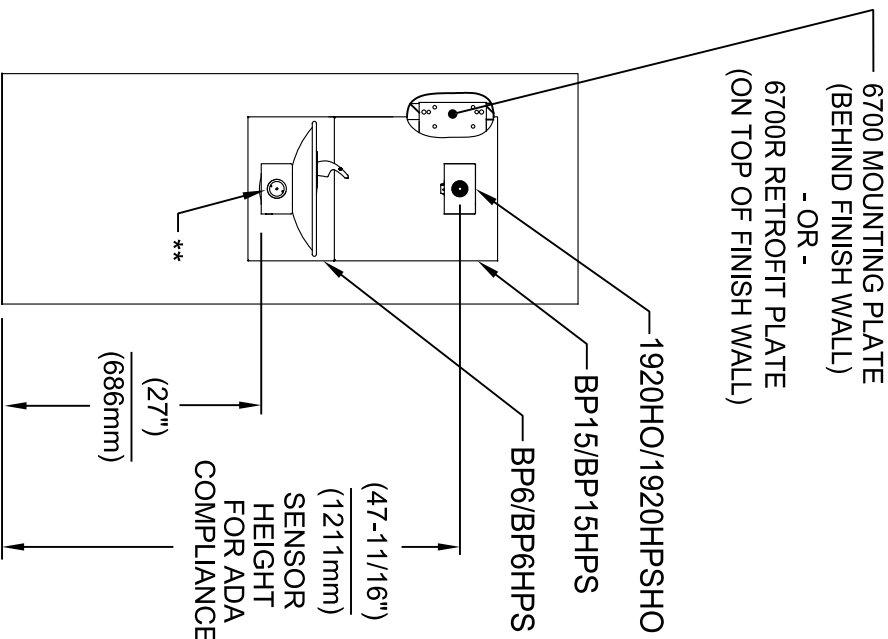
NOTES:

1. SEE SHEETS 2 THRU 7 FOR BOTTLE FILLER ADULT ADA HEIGHT APPLICATIONS AND SHEET 8 FOR CHILD ADA HEIGHT APPLICATIONS.
2. WHEN INSTALLING THIS UNIT, LOCAL, STATE OR FEDERAL CODES SHOULD BE ADHERED TO FOR INSTALLATION LOCATIONS, WASTE AND SUPPLY REQUIREMENTS OTHER THAN SHOWN.
- 3 REFER TO 1RKHO.H OPERATION & MAINTENANCE INSTRUCTIONS FOR SENSOR SETUP.

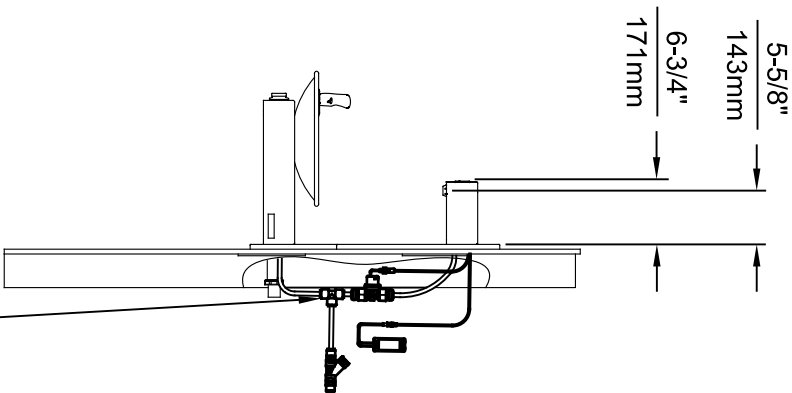
		1455 KLEPPLE LANE SPARKS, NEVADA 89431 (775) 359-4712 FAX (775) 359-7424 E-MAIL: HAWS@HAWS.CO.COM WEBSITE: WWW.HAWS.CO.COM	
EGN NO. REVISED PER BY: FV DRAWN: ECN: 6136 DATE: CHK'D: KM FV 08/18/20	MODEL(S) 1920HO/1920HPSHO/1920WHO	SCALE: N/A DRAWING TYPE:	INSTALLATION:
APPROVED: FV DATE: 11/04/24	PART NUMBER 0510001063.D	SIZE: A1 SHEET: 1 OF 8	REVISION: 8



INSTALLATION ABOVE HAWS 1011 & H1011.8 SERIES



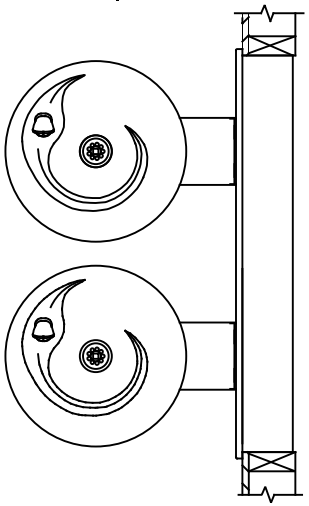
INSTALLATION ABOVE HAWS 1001 & H1001.8 SERIES



3/8" O.D. SUPPLY TUBING AND 3/8" O.D. PUSH-IN TEE SUPPLIED. (CONNECT TO FOUNTAIN SUPPLY LINE)

** EXISTING PUSH BUTTON ASSEMBLY SHOWN, CAN BE CONVERTED TO HANDS OFF STYLE, USING RETRO-FIT KIT MODEL 1RKHO.H OR 2RKHO.H DEPENDING ON CUSTOMER REQUIREMENTS.

- * IF YOUR FOUNTAIN IS THIS STYLE USE THESE DIMENSIONS
- 1. SEE SEPARATE INSTALLATION DRAWINGS FOR MOUNTING PLATES AND BACK PANELS (SHOWN FOR REFERENCE - NOT SUPPLIED).
- 2. WHEN INSTALLING THIS UNIT, LOCAL, STATE OR FEDERAL CODES SHOULD BE ADHERED TO FOR INSTALLATION LOCATIONS, WASTE & SUPPLY REQUIREMENTS OTHER THAN SHOWN.



1455 KLEPPLE LANE

SPARKS, NEVADA 89431

(775) 359-4712 FAX (775) 359-7424

E-MAIL: HAWS@HAWS.CO.COM

WEBSITE: WWW.HAWS.CO.COM

PART NUMBER 0510001063.D

REVISION 8

MODEL(S) 1920HO/1920HPSHO/1920WHO

SCALE: N/A DRAWING TYPE: INSTALLATION

DATE: 11/16/24

APPROVED: FV

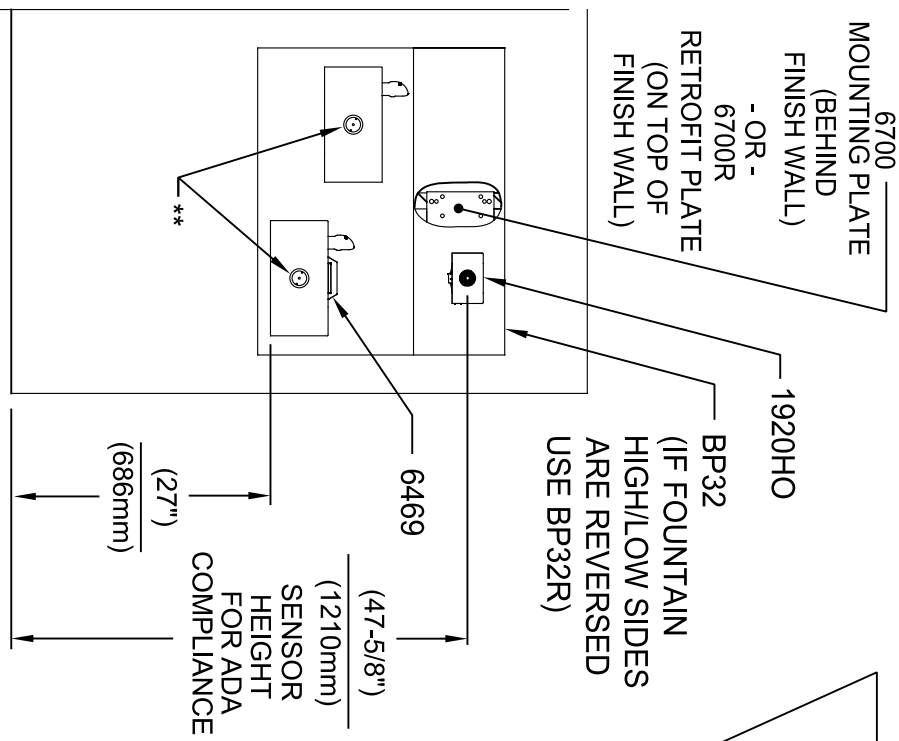
EGN NO. REVISED PER BY: FV

DRAWN: 5574 EGN: 6136

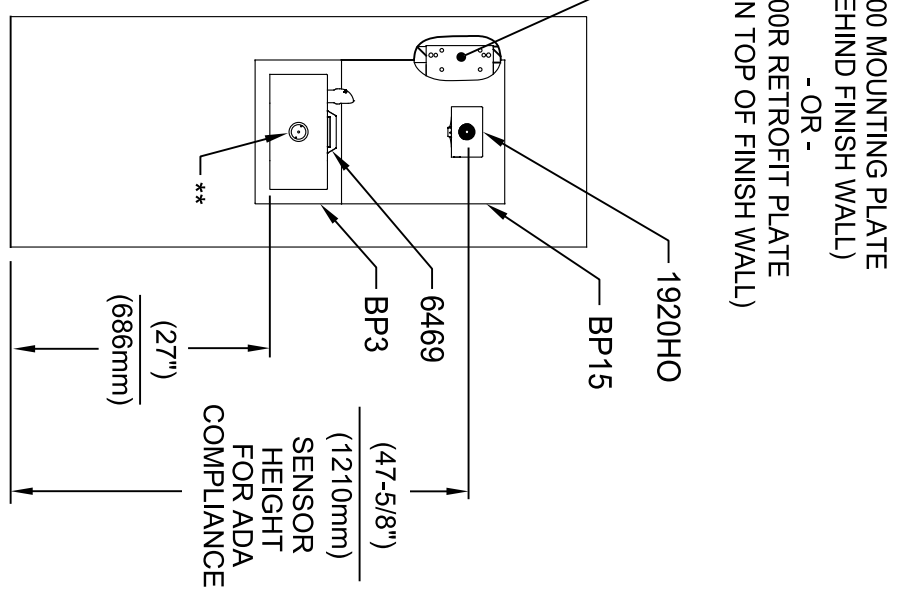
DATE: 08/18/20

CHK'D: KM

FV



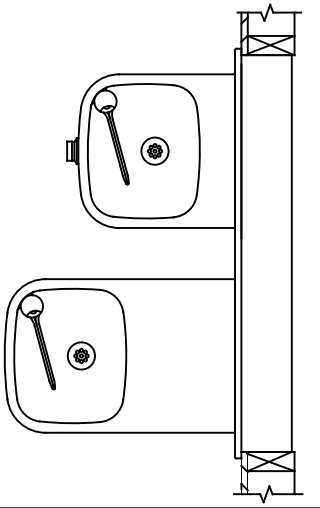
INSTALLATION ABOVE HAWS 1119 & H1119.8 SERIES



**INSTALLATION ABOVE HAWS 1109 & H1109.8 SERIES
SEE SHEET 8 FOR INSTALLATION AT CHILD HEIGHT**

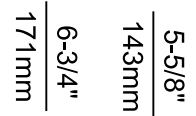
* IF YOUR FOUNTAIN IS THIS STYLE USE THESE DIMENSIONS

1. SEE SEPARATE INSTALLATION DRAWINGS FOR MOUNTING PLATES, BACK PANELS AND DRIP TRAY (NOT SUPPLIED).
2. WHEN INSTALLING THIS UNIT, LOCAL, STATE OR FEDERAL CODES SHOULD BE ADHERED TO FOR INSTALLATION LOCATIONS, WASTE & SUPPLY REQUIREMENTS OTHER THAN SHOWN.



** EXISTING PUSH BUTTON ASSEMBLY SHOWN, CAN BE CONVERTED TO HANDS OFF STYLE, USING RETRO-FIT KIT MODEL 1RKHO.H OR 2RKHO.H DEPENDING ON CUSTOMER REQUIREMENTS.

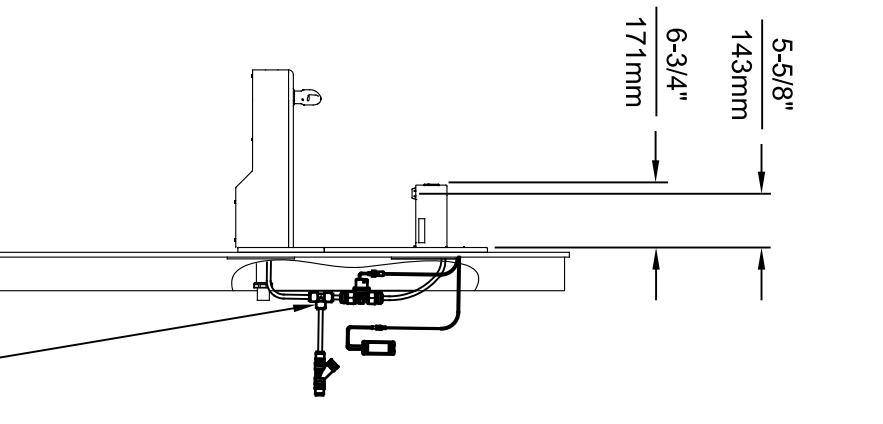
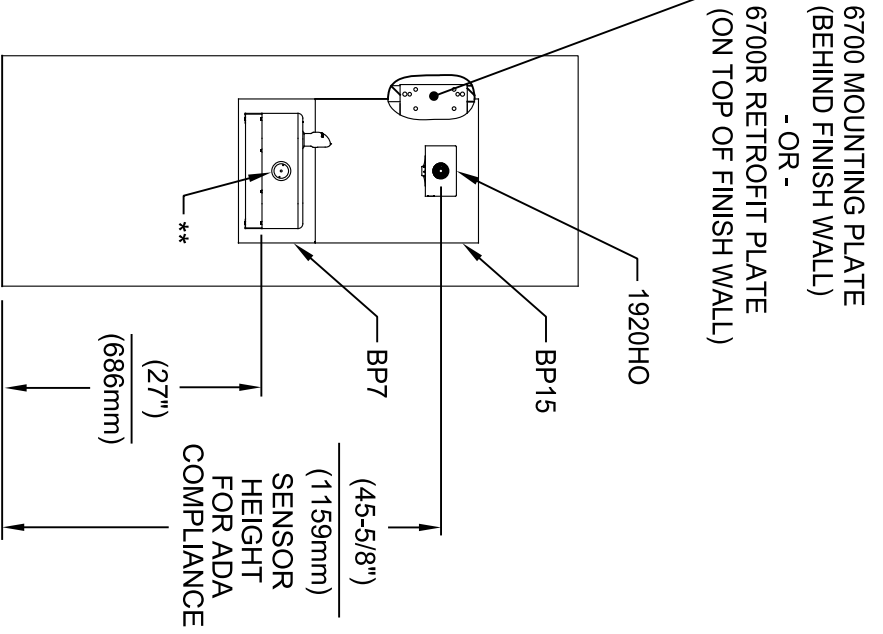
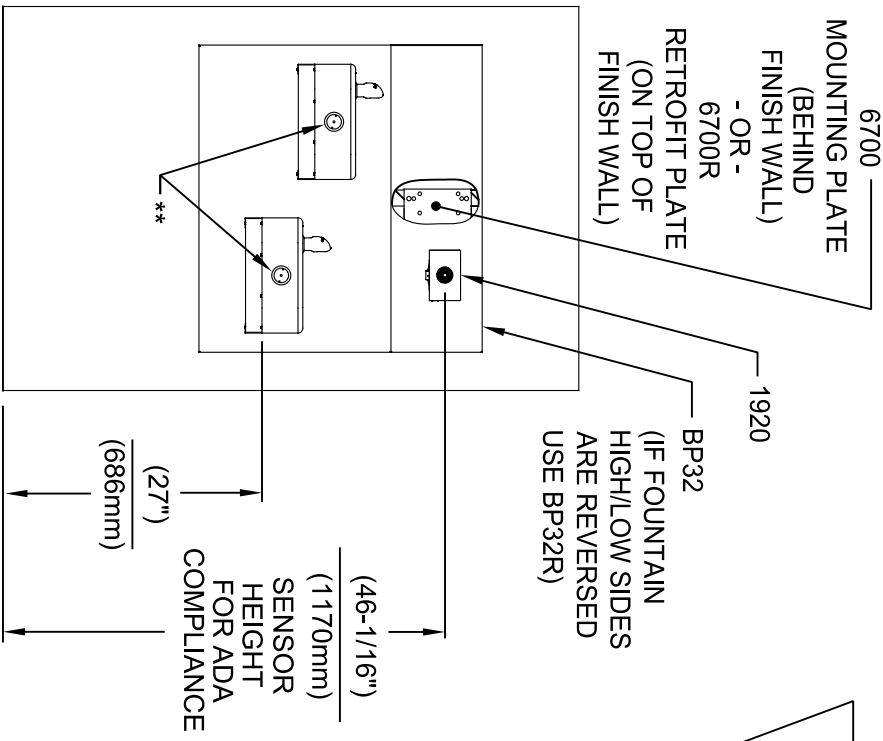
3/8" O.D. SUPPLY TUBING AND 3/8" O.D. PUSH-IN TEE SUPPLIED. (CONNECT TO FOUNTAIN SUPPLY LINE)



Haws
Since 1906

1455 KLEPPLE PLANE
SPARKS, NEVADA 89431
(775) 359-4712 FAX (775) 359-7424
E-MAIL: HAWS@HAWS.CO.COM
WEBSITE: WWW.HAWS.CO.COM

EGN NO. REVISED PER BY:	MODEL(S)	SCALE	DATE	DATE	SCALE	DATE	DATE	SCALE	DATE
5574 EGN: 6136 FV	1920HO/1920HPSHO/1920WHO	N/A	11/8/24	08/18/20	N/A	11/8/24	08/18/20	N/A	11/8/24
DRAWN: FV	CHECKD: KM	INSTALLATION	SIZE: A1	SHEET: 3	OF: 8	REVISION: 8	PART NUMBER: 0510001063.D		

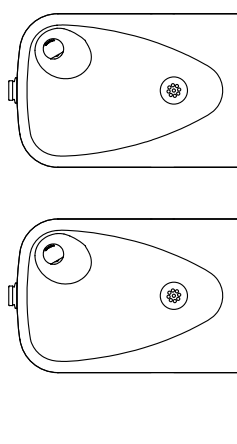


INSTALLATION ABOVE HAWS 1117L & H1117.8 SERIES

**INSTALLATION ABOVE HAWS 1107L & H1107.8 SERIES
SEE SHEET 8 FOR INSTALLATION AT CHILD HEIGHT**

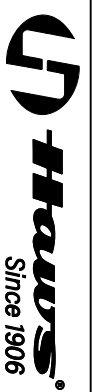
* IF YOUR FOUNTAIN IS THIS STYLE USE THESE DIMENSIONS

1. SEE SEPARATE INSTALLATION DRAWINGS FOR MOUNTING PLATES AND BACK PANELS (SHOWN FOR REFERENCE - NOT SUPPLIED).
2. WHEN INSTALLING THIS UNIT, LOCAL, STATE OR FEDERAL CODES SHOULD BE ADHERED TO FOR INSTALLATION LOCATIONS, WASTE & SUPPLY REQUIREMENTS OTHER THAN SHOWN.

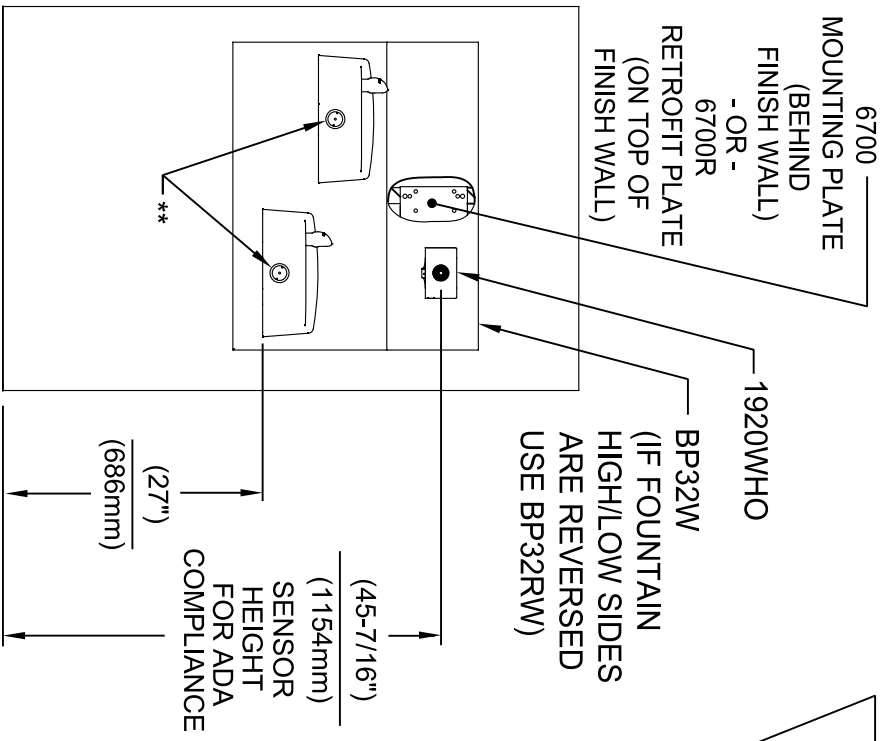


** EXISTING PUSH BUTTON ASSEMBLY SHOWN, CAN BE CONVERTED TO HANDS OFF STYLE, USING RETRO-FIT KIT MODEL 1RKHO.H OR 2RKHO.H DEPENDING ON CUSTOMER REQUIREMENTS.

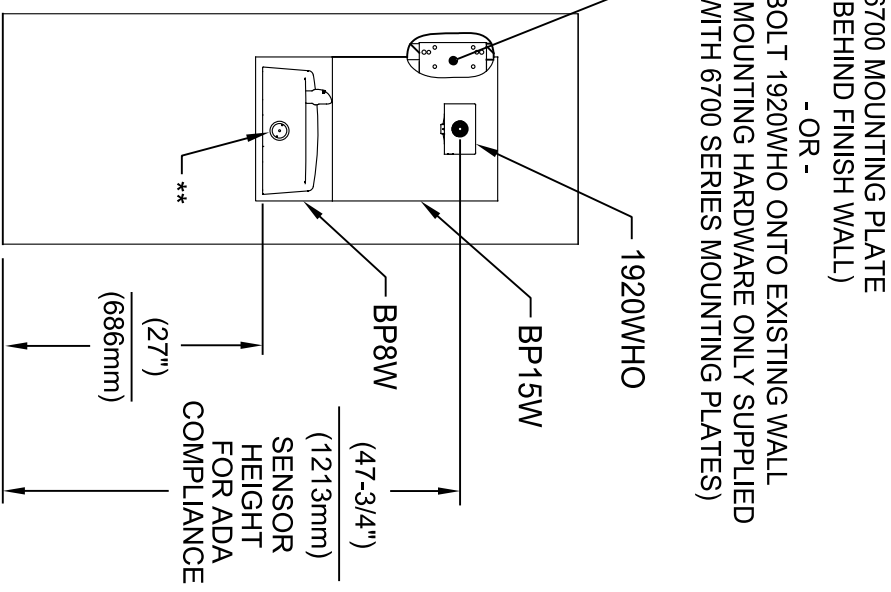
3/8" O.D. SUPPLY TUBING AND 3/8" O.D. PUSH-IN TEE SUPPLIED. (CONNECT TO FOUNTAIN SUPPLY LINE)



EGN NO. REVISED PER BY:	MODEL(S)	1455 KLEPPLELANE
5574 EGN: 6136	1920HO/1920HPSHO/1920WHO	SPARKS, NEVADA 89431
DATE: 08/18/20	SCALE: N/A	(775) 359-4712 FAX (775) 359-7424
CHK'D: KM	DRAWING TYPE:	E-MAIL: HAWS@HAWS.CO.COM
DATE: 11/04/24	INSTALLATION:	WEBSITE: WWW.HAWS.CO.COM
APPROVED: FV	SIZE: A1	PART NUMBER
	SHEET: 4 OF 8	0510001063.D
		REVISION: 8

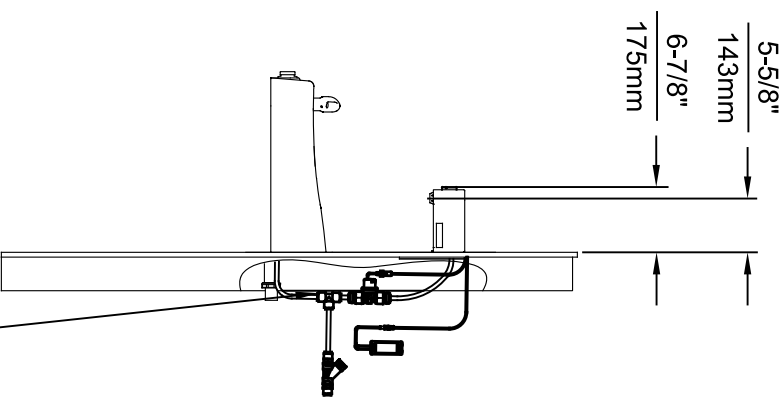


INSTALLATION ABOVE HAWS 1501



INSTALLATION ABOVE HAWS 1311

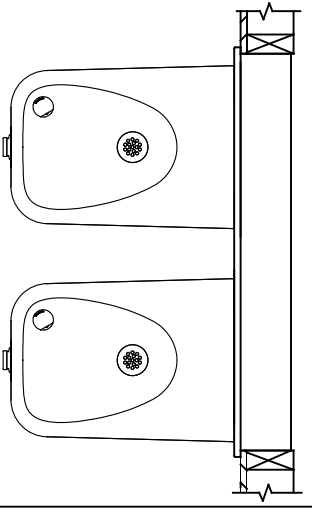
SEE SHEET 8 FOR INSTALLATION AT CHILD HEIGHT



3/8" O.D. SUPPLY TUBING AND 3/8" O.D. PUSH-IN TEE SUPPLIED. (CONNECT TO FOUNTAIN SUPPLY LINE)

* IF YOUR FOUNTAIN IS THIS STYLE USE THESE DIMENSIONS

1. SEE SEPARATE INSTALLATION DRAWINGS FOR MOUNTING PLATES AND BACK PANELS (SHOWN FOR REFERENCE - NOT SUPPLIED).
2. WHEN INSTALLING THIS UNIT, LOCAL, STATE OR FEDERAL CODES SHOULD BE ADHERED TO FOR INSTALLATION LOCATIONS, WASTE & SUPPLY REQUIREMENTS OTHER THAN SHOWN.



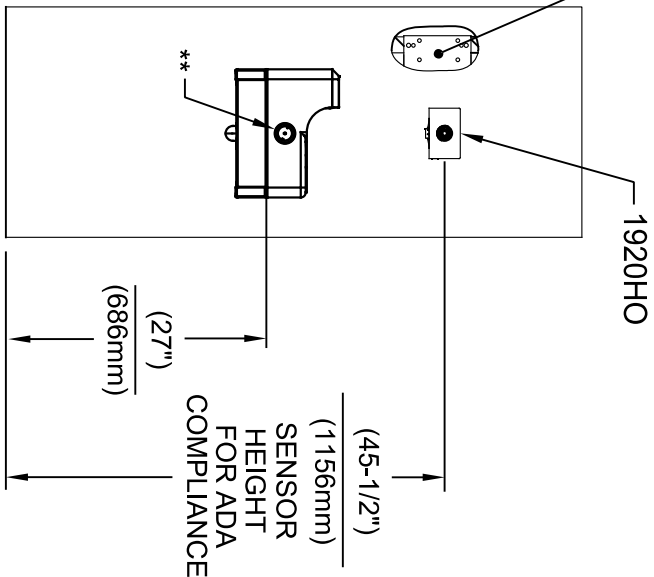
** EXISTING PUSH BUTTON ASSEMBLY SHOWN. CAN BE CONVERTED TO HANDS OFF STYLE, USING RETRO-FIT KIT MODEL 1RKHO.H OR 2RKHO.H DEPENDING ON CUSTOMER REQUIREMENTS.

Haws
Since 1906

1455 KLEPPLE LANE
SPARKS, NEVADA 89431
(775) 359-4712 FAX (775) 359-7424
E-MAIL: HAWS@HAWSCO.COM
WEBSITE: WWW.HAWSCO.COM

EGN NO. REVISED PER BY:	MODEL(S)	SCALE	DATE	DATE	DATE
5574	1920HO/1920HPSHO/1920WHO	N/A	11/04/24		
DRAWN: FV	CHK'D: KM	DRAWING TYPE:	INSTALLATION	SIZE: A1	SHEET: 5 OF 8
FV					
REVISION:	PART NUMBER				
	0510001063.D				

6700 MOUNTING PLATE
(BEHIND FINISH WALL)
- OR -
BOLT 1920HO ONTO EXISTING WALL
(MOUNTING HARDWARE ONLY SUPPLIED
WITH 6700 SERIES MOUNTING PLATES)

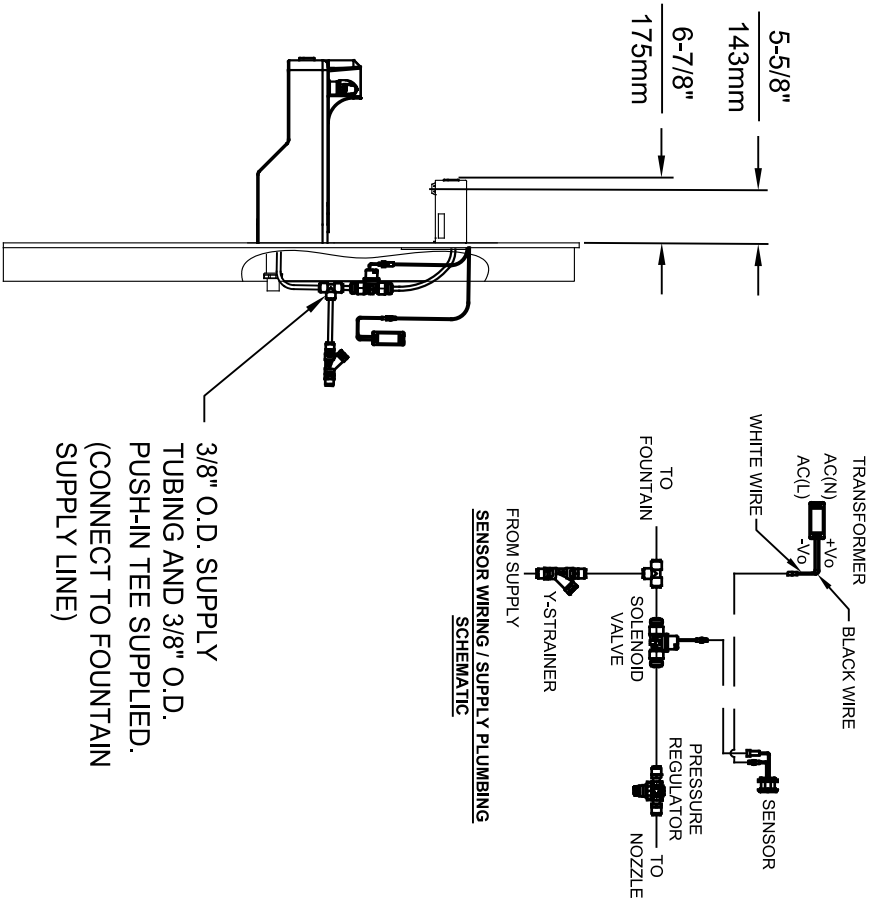
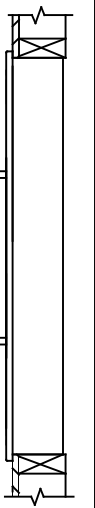


INSTALLATION ABOVE HAWS 1047

* IF YOUR FOUNTAIN IS THIS STYLE USE THESE DIMENSIONS

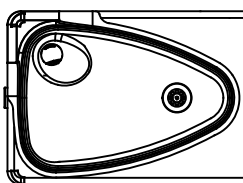
1. SEE SEPARATE INSTALLATION DRAWINGS FOR MOUNTING PLATES AND BACK PANELS (SHOWN FOR REFERENCE - NOT SUPPLIED).

2. WHEN INSTALLING THIS UNIT, LOCAL, STATE OR FEDERAL CODES SHOULD BE ADHERED TO FOR INSTALLATION LOCATIONS, WASTE & SUPPLY REQUIREMENTS OTHER THAN SHOWN.



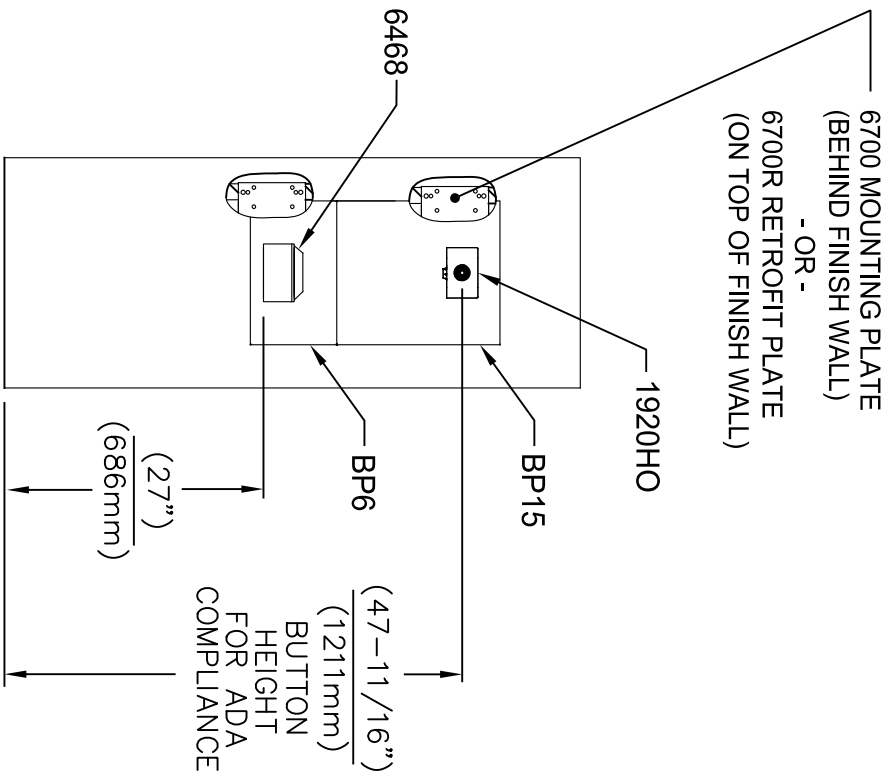
3/8" O.D. SUPPLY TUBING AND 3/8" O.D. PUSH-IN TEE SUPPLIED. (CONNECT TO FOUNTAIN SUPPLY LINE)

** EXISTING PUSH BUTTON ASSEMBLY SHOWN, CAN BE CONVERTED TO HANDS OFF STYLE, USING RETRO-FIT KIT MODEL 1RKHO.H.



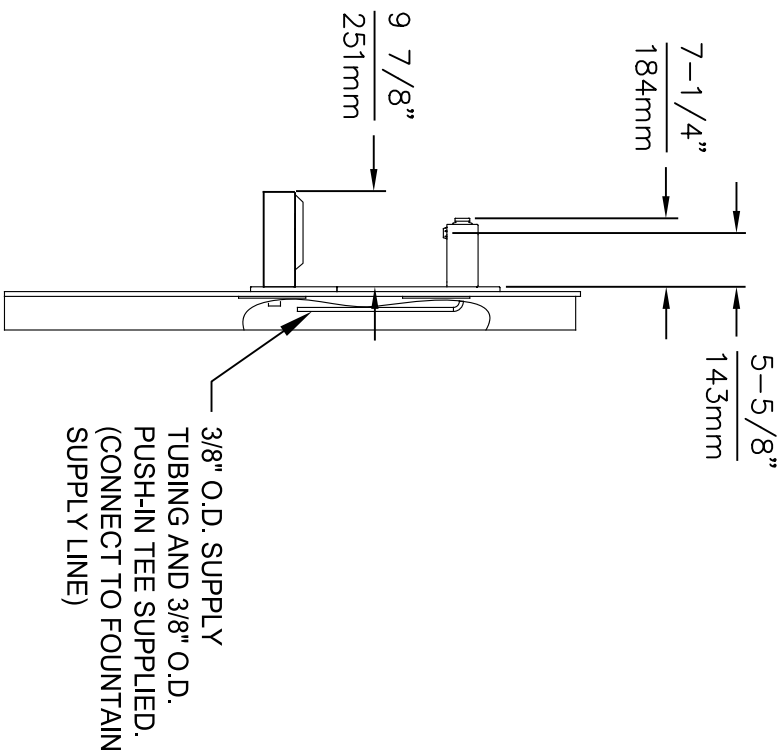
1455 KLEPPLE LANE
SPARKS, NEVADA 89431
(775) 359-4712 FAX (775) 359-7424
E-MAIL: HAWS@HAWS.CO.COM
WEBSITE: WWW.HAWS.CO.COM

EGN NO. REVISED PER BY:	MODEL(S)	SCALE	DATE	INSTALLATION	SIZE	SHEET	OF
5574 EGN: 6136	1920HO/1920HPSHO/1920WHO	N/A	11/9/24		A	6	8
DRAWN: FV	CHK'D: KM	DRAWING TYPE:	DATE	INSTALLATION	SIZE	SHEET	OF
FV	KM		08/18/20		A	6	8
APPROVED: FV	DATE	SCALE	DATE	INSTALLATION	SIZE	SHEET	OF
FV	08/18/20	N/A	11/9/24		A	6	8
PART NUMBER		REVISION					
0510001063.D		8					



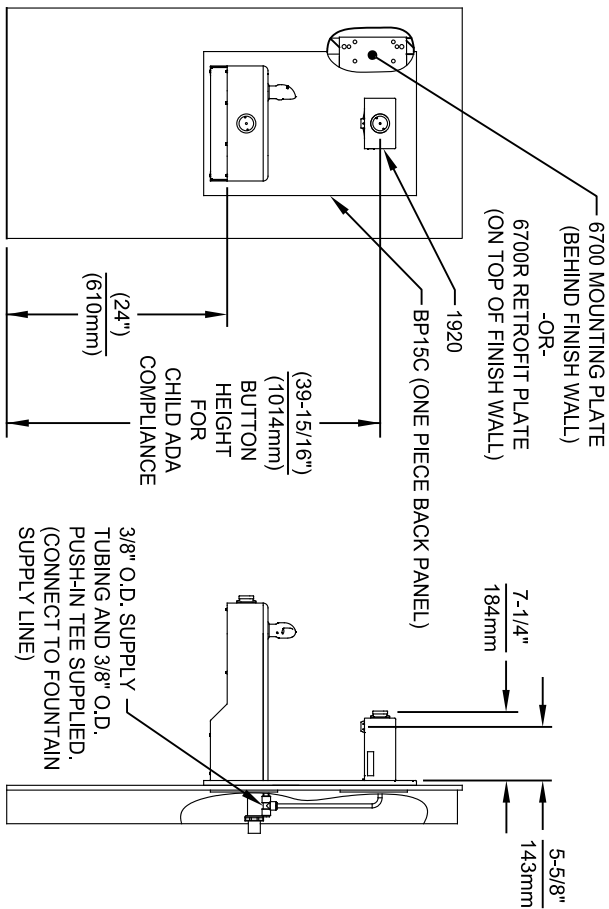
INSTALLATION ABOVE 6468

1. SEE SEPARATE INSTALLATION DRAWINGS FOR MOUNTING PLATES AND BACK PANELS (SHOWN FOR REFERENCE - NOT SUPPLIED).
2. WHEN INSTALLING THIS UNIT, LOCAL, STATE OR FEDERAL CODES SHOULD BE ADHERED TO FOR INSTALLATION LOCATIONS, WASTE & SUPPLY REQUIREMENTS OTHER THAN SHOWN.

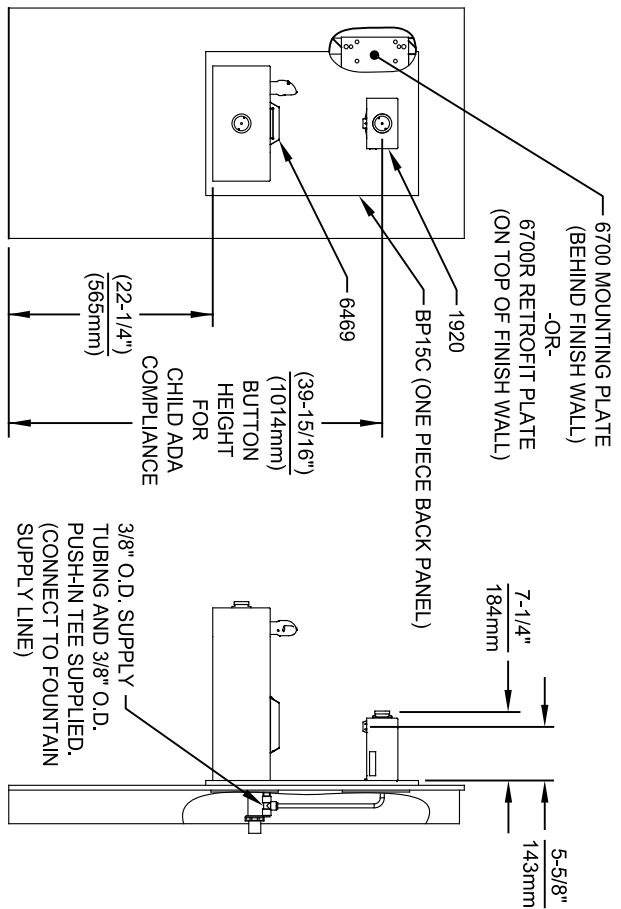


3/8" O.D. SUPPLY TUBING AND 3/8" O.D. PUSH-IN TEE SUPPLIED. (CONNECT TO FOUNTAIN SUPPLY LINE)

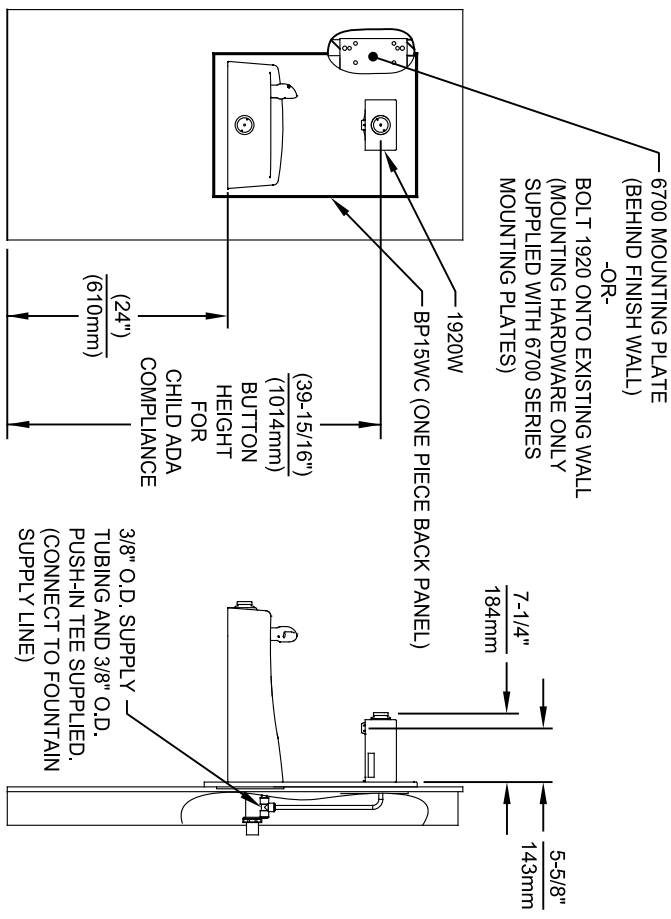
		Since 1906	
EGN NO. REVISED PER BY: FV 5744 EGN 6136 DRAWN: DATE: 10/04/21 FV DATE: KM		MODEL(S) 1920HO/1920HPSHO/1920WHO	
APPROVED: FV DATE: 11/04/24		SCALE: N/A DRAWING TYPE: INSTALLATION	
1455 KLEPPLE LANE SPARKS, NEVADA 89431 (775) 359-4712 FAX (775) 359-7424 E-MAIL: HAWS@HAWSCO.COM WEBSITE: WWW.HAWSCO.COM		PART NUMBER 0510001063.D REVISION 8	



INSTALLATION ABOVE HAWS 1107L & H1107.8 SERIES



INSTALLATION ABOVE HAWS 1109, 1109.14 & H1109.8 SERIES
MUST USE PARALLEL APPROACH WITH THIS BOWL COMBINATION



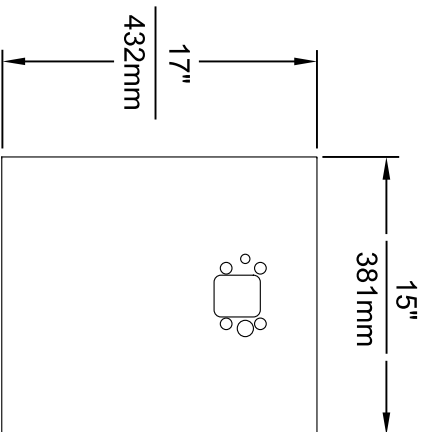
INSTALLATION ABOVE HAWS 1311

- NOTES:
- HEIGHT DIMENSIONS SHOWN ARE FOR CHILD ADA APPLICATIONS:
- BOTTLE FILLER HEIGHT AT 40" MAX.
- DRINKING FOUNTAIN BUBBLER HEIGHT AT 30" MAX.
(SEE SHEETS 3, 4 & 5 FOR ADULT ADA HEIGHT DIMENSIONS)
 - SEE SEPARATE INSTALLATION DRAWINGS FOR MOUNTING PLATES AND BACK PANELS (SHOWN FOR REFERENCE - NOT SUPPLIED).
 - WHEN INSTALLING THIS UNIT, LOCAL, STATE OR FEDERAL CODES SHOULD BE ADHERED TO FOR INSTALLATION LOCATIONS, WASTE & SUPPLY REQUIREMENTS OTHER THAN SHOWN.

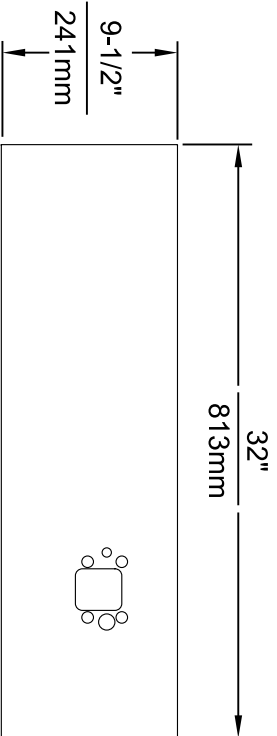
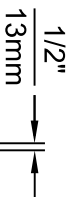
Haws
Since 1906

1455 KLEPPLE PLANE
SPARKS, NEVADA 89431
(775) 359-4712 FAX (775) 359-4224
E-MAIL: HAWS@HAWSCO.COM
WEBSITE: WWW.HAWSCO.COM

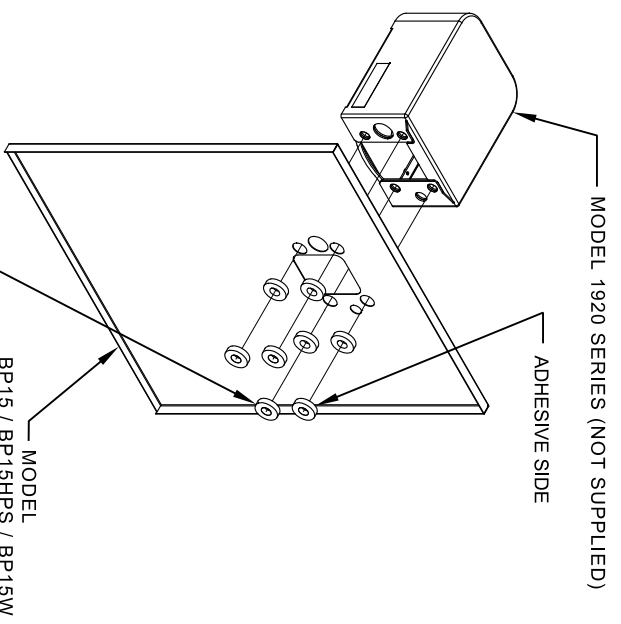
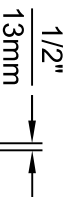
ECON. NO. REVISED PER BY:		MODEL(S)	
5744	ECON. 6136	FV	1920HO/1920HPSHO/1920WHO
DATE:	CHK'D:	DATE:	INSTALLATION:
02/26/24	KM	11/04/24	SCALE: N/A
APPROVED:		SCALE:	DRAWING TYPE:
FV	11/04/24	N/A	INSTALLATION
PART NUMBER		SIZE:	SHEET
0510001063.D		A1	8 OF 8
REVISION		8	



MODEL BP15 / BP15HPS / BP15W



MODEL BP32 / BP32HPS / BP32W



8 SPACERS (2 PER MOUNTING BOLT IF THE MOUNTING PLATE (MODEL 6700 - NOT SUPPLIED) IS INSTALLED BEHIND THE FINISHED WALL. USE 1 SPACER PER BOLT FOR RETROFITS WHERE THE MOUNTING PLATE (MODEL 6700R - NOT SUPPLIED) IS INSTALLED IN FRONT OF THE FINISHED WALL)

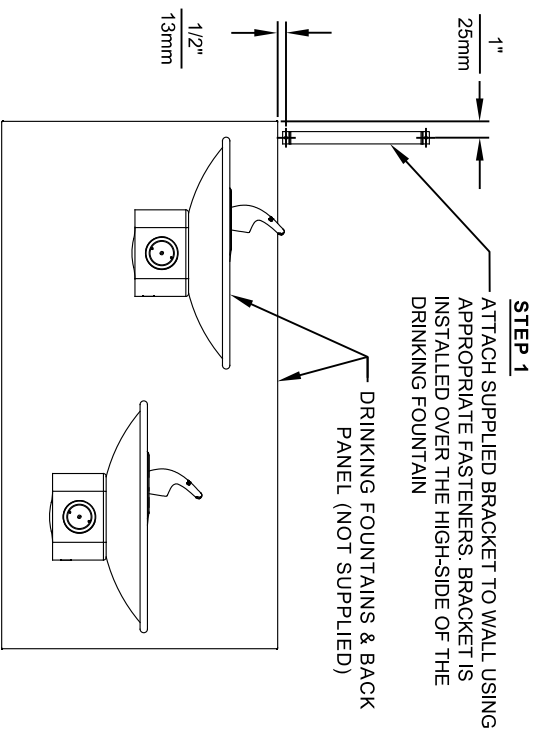
INSTALLATION OVER SINGLE FOUNTAIN

SHOWN FROM REAR

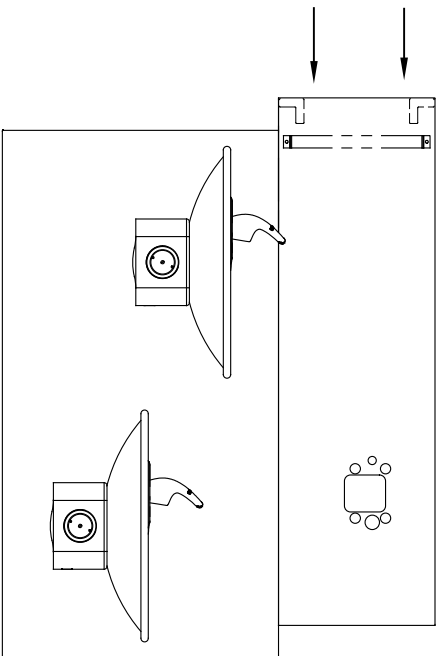
(SEE SHEET 3 OF 3 FOR INSTALLATION OF SPACERS ON COMBINATION BOTTLE FILLER AND FOUNTAIN BACK PANELS FOR CHILD HEIGHT APPLICATIONS - MODELS BP15C & BP15WC)

- NOTES:
1. WHEN INSTALLING THIS UNIT, LOCAL, STATE OR FEDERAL CODES SHOULD BE ADHERED TO.
 2. BOTTLE FILLER SHOWN FOR REFERENCE ONLY (NOT SUPPLIED).

		1455 KLEPPE LANE SPARKS, NEVADA 89431 (775) 359-4712 FAX (775) 359-7424 E-MAIL: HAWS@HAWSCC.COM WEBSITE: WWW.HAWSCC.COM	
EQD NO. REQUESTED PER BY: _____ DRAWN: _____ APPROVED: _____ F.V. _____	EQD. 6146 DATE: 02/11/25	MODEL(S) DRAWING, BACK PANEL, SPACER INSTALLATION FOR BP15 SERIES & BP32 SERIES, BOTTLE FILLER	PART NUMBER 0510000493
SCALE: 1:1 DRAWING TYPE: INSTALLATION SIZE: A	SHEET 1 OF 3	REVISION 6	

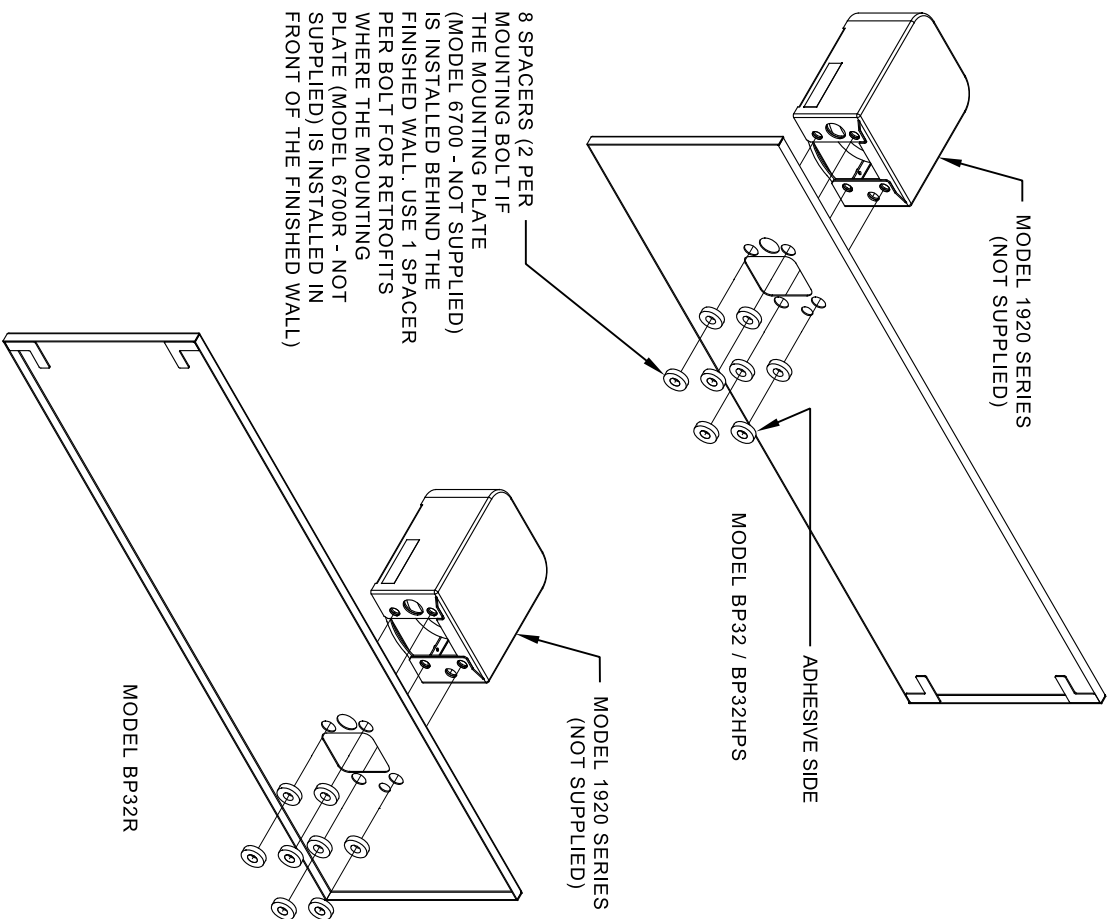


STEP 2
PLACE THE BACKPLATE AGAINST THE WALL AND SLIDE SIDEWAYS SO THE TABS CATCH UNDER THE BRACKET.




STEP 3
INSTALL THE BOTTLE FILLER (NOT SUPPLIED) PER THE INSTRUCTIONS SUPPLIED WITH THE UNIT.

- NOTES:
1. WHEN INSTALLING THIS UNIT, LOCAL, STATE OR FEDERAL CODES SHOULD BE ADHERED TO.
 2. BOTTLE FILLERS, DRINKING FOUNTAINS & DRINKING FOUNTAIN BACK PANELS SHOWN FOR REFERENCE ONLY (NOT SUPPLIED).




INSTALLATION OVER DOUBLE FOUNTAIN

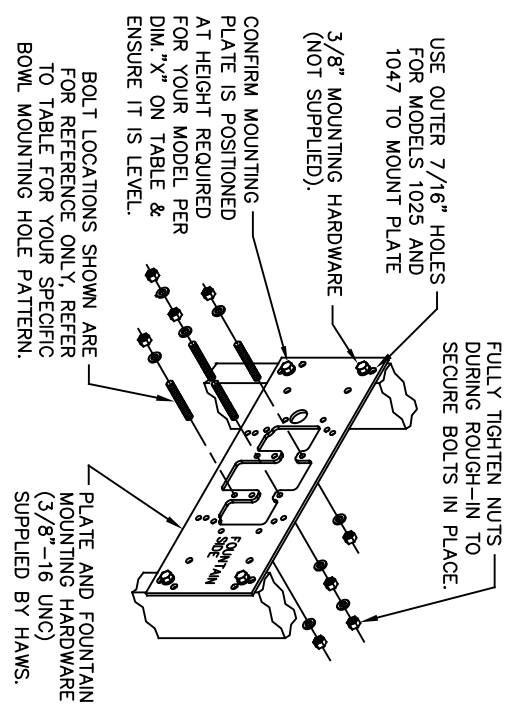
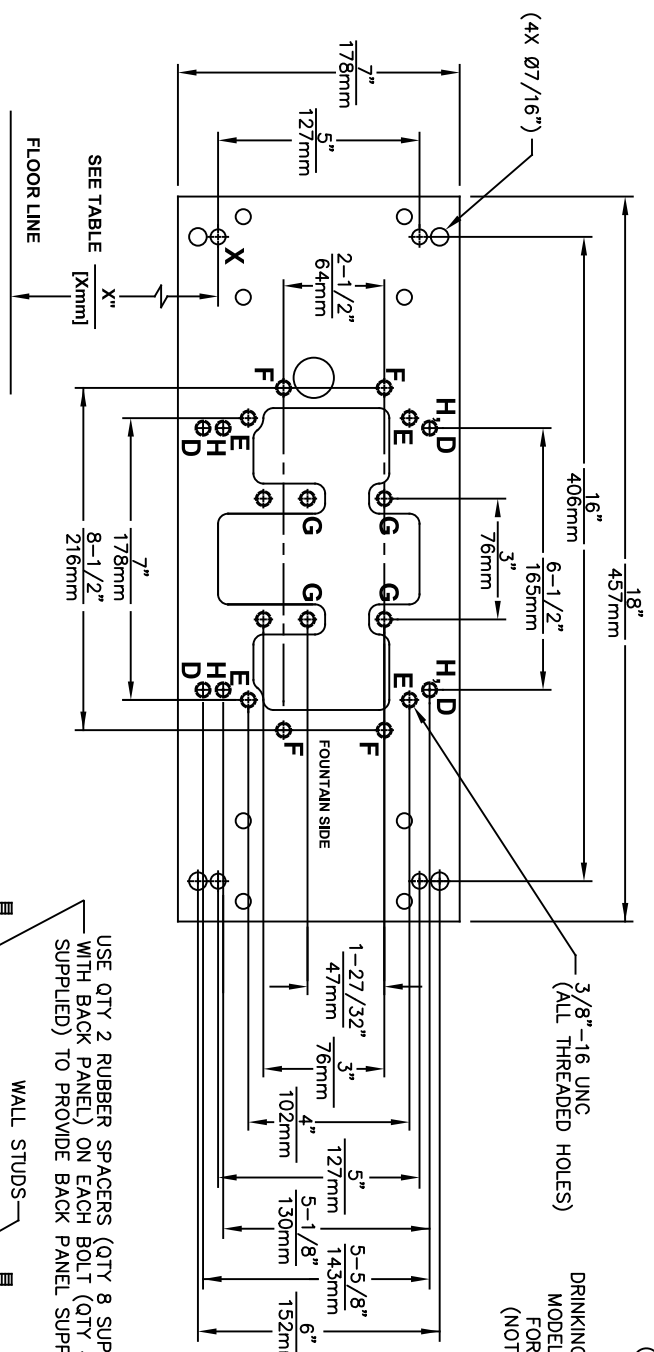
SHOWN FROM REAR

EQUIV. NO. REQUESTED PER BY:		MODEL(S)	
SCALE	EQUIV. 6146	DATE	CHG.
DRAWN	12/01/17	DATE	CHG.
APPROVED:		DATE	
F.V.	02/11/25	SCALE:	1:1
		DRAWING TYPE:	INSTALLATION
		SIZE:	A
		SHEET:	2 OF 3
		1455 KLEPPE LANE SPARKS, NEVADA 89431 (775) 359-4712 FAX (775) 359-7424 E-MAIL: HAWS@HAWSCC.COM WEBSITE: WWW.HAWSCC.COM	
DRAWING, BACK PANEL, SPACER INSTALLATION		PART NUMBER	
FOR BP15 SERIES & BP32 SERIES, BOTTLE FILLER		0510000493	
		REVISION	
		6	

6700 INDEX

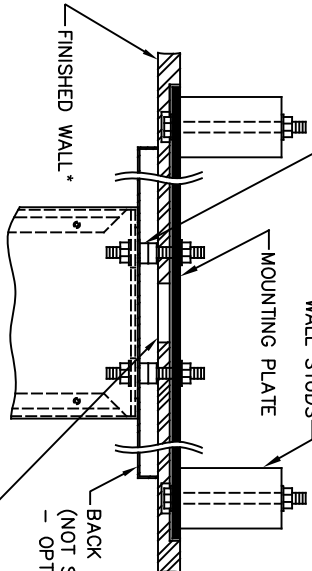
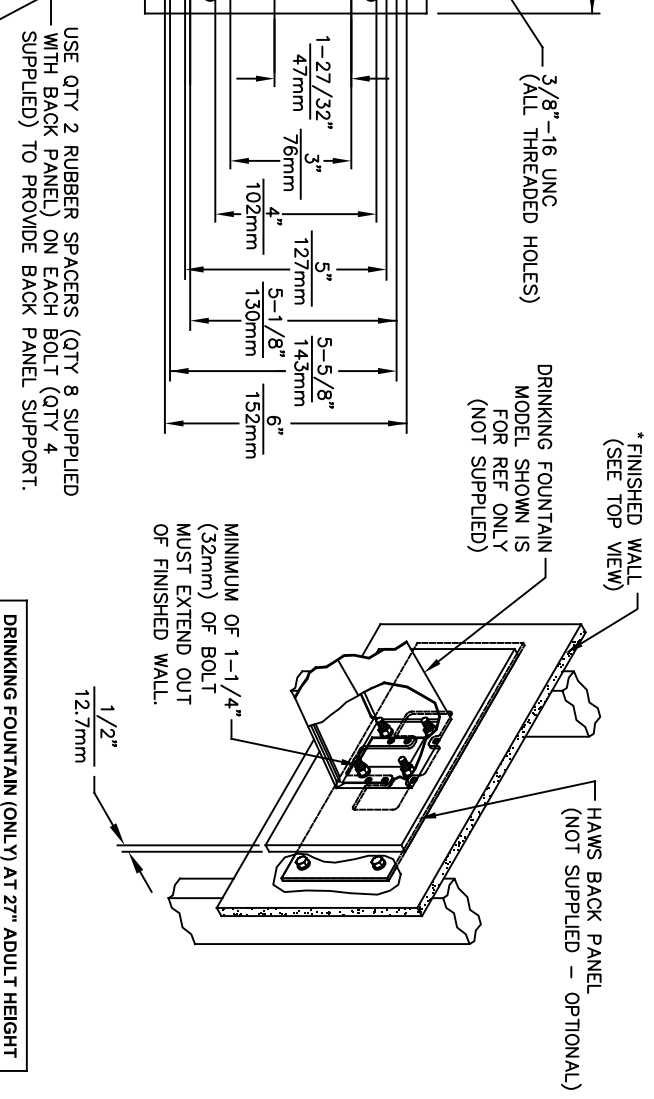
INSTALLATION WITH:	TYPICAL USES	SEE SHEET...	
GENERAL INSTALLATION		IMPORTANT INFORMATION FOR ALL INSTALLATIONS	3 OF 6
1001 BOWLS	HAWS SERIES 1001X, 1001.8X		3 OF 6
1107 BOWLS	HAWS SERIES 1107X, 1107.8X		3 OF 6
1109 BOWLS	HAWS SERIES 1109X, 1109.8X		3 OF 6
1047 BOWLS	HAWS SERIES 1047		4 OF 6
1011 BOWLS	HAWS SERIES 1011X, 1011.8X		4 OF 6
1119 BOWLS	HAWS SERIES 1119X, 1119.8X		4 OF 6
1117 BOWLS	HAWS SERIES 1117X, 1117.8X	5 OF 6	
1311 BOWLS	HAWS SERIES 1311	5 OF 6	
1501 BOWLS	HAWS SERIES 1501	5 OF 6	
CHILD HEIGHT	HAWS 1107PCH, 1109PCH, 1311PCH	6 OF 6	

 Haws Since 1906		1455 KLEPPE LANE SPARKS, NEVADA 89431 (775) 359-4712 FAX (775) 359-7424 E-MAIL: HAWS@HAWS.CO.COM WEBSITE: WWW.HAWS.CO.COM	
ECN NO. REVISED PER BY:	MODEL(S)	SCALE	DRAWING TYPE
ECN: 6148		N/A	
DATE: 10/03/24	67/00		
CHKD: JG			
DATE: 02/11/25			
CHKD: JG			
DATE: 02/11/25			
APPROVED: FV			
INSTALLATION	SIZE	A	SHEET 1 OF 6
			26
PART NUMBER	0002080016		
REVISION			



CAUTION

REGARDING CONCRETE/MASONRY WALL MOUNTING: DO NOT SECURE MOUNTING PLATE TO SAME SIDE OF WALL AS FOUNTAIN. AVOID COMPROMISING INTEGRITY OF WALL WHEN ANCHORING FOUNTAIN. IT IS RECOMMENDED THAT INSTALLER CALL TECHNICAL SUPPORT IF THERE ARE ANY QUESTIONS AS TO HOW TO OBTAIN A PROPER ANCHOR IN CONCRETE/MASONRY WALLS. 1-800-766-5612



TOP VIEW

6700 MOUNTING PLATE FOR USE WITH DRINKING FOUNTAINS AND WASTE DRIP TRAYS AT 27" ADULT HEIGHT (SEE SHEETS 2 - 5 FOR USE WITH BOTTLE FILLER 1920/1920HO SERIES AND CHILD HEIGHT APPLICATIONS)

MODEL	USE BOWL MTG. HOLE PATTERN	USE "X" DIM. BELOW TO POSITION MOUNTING PLATE HOLE "X"
1001	"G"	25-3/8" [645mm]
1025	"D"	28-1/8" [714mm]
1047	"E"	24-3/8" [619mm]
1105	"H"	34-5/16" [872mm]
1107	"F"	26-3/16" [665mm]
1109	"H"	27-5/16" [694mm]
1109.14	"H"	27-5/16" [694mm]
1109FR	"H"	27-5/16" [694mm]
1311	"E"	26-3/4" [679mm]

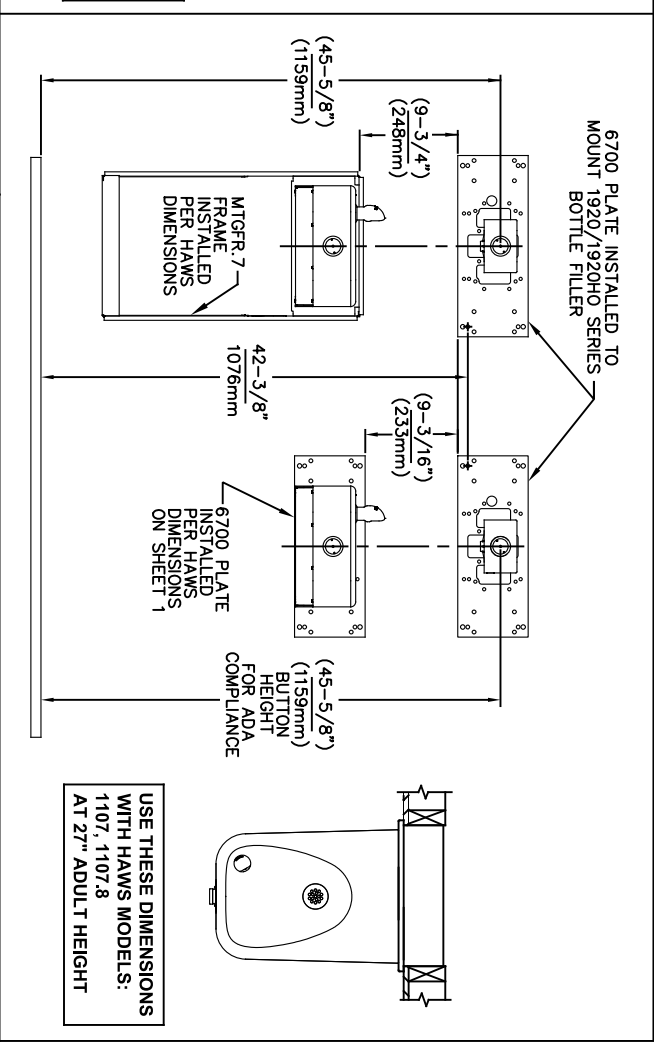
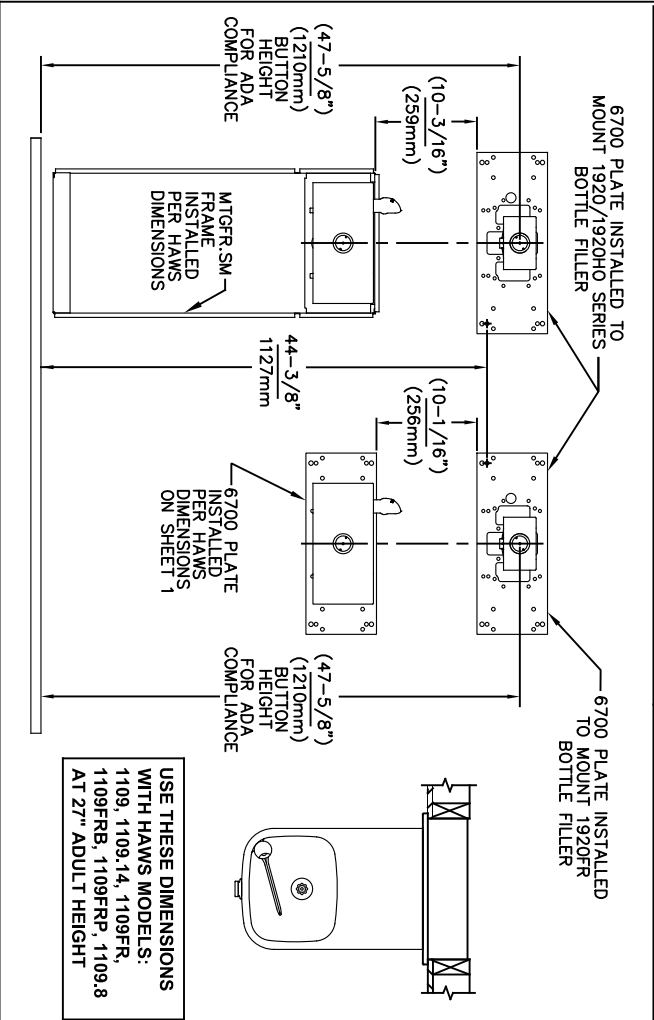
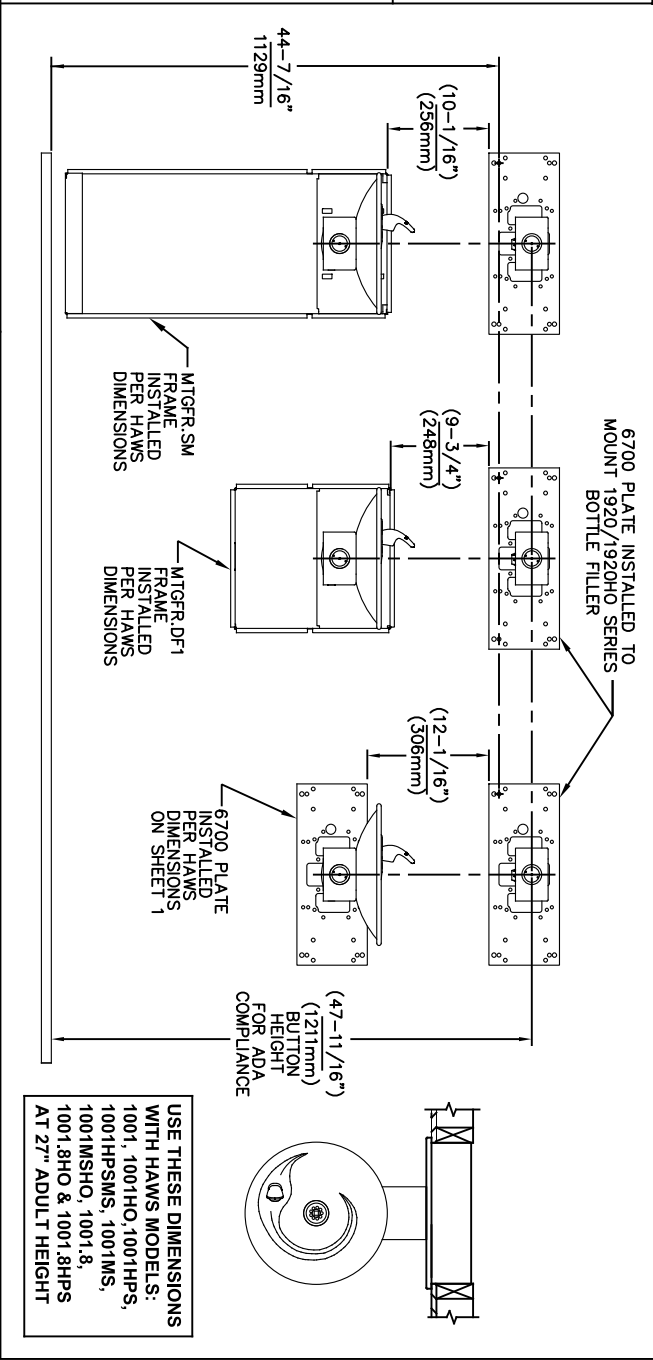
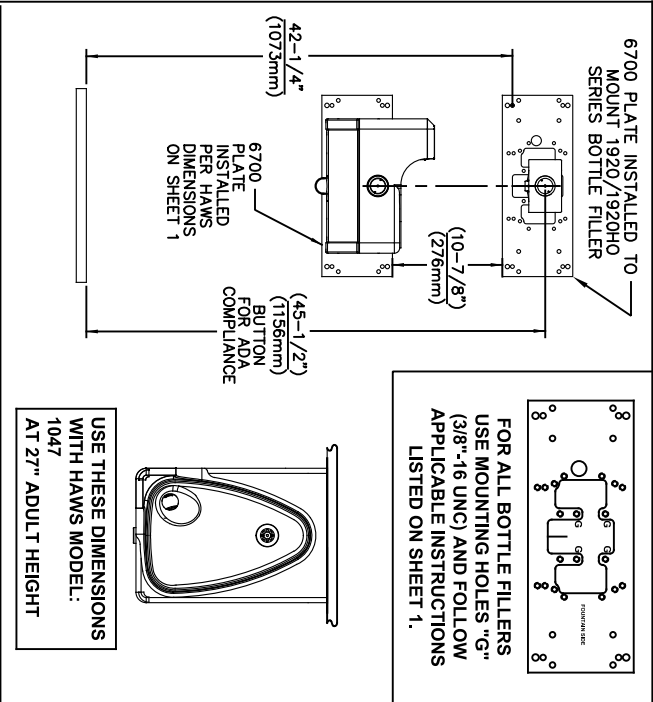
WASTE DRIP TRAY (ONLY) AT 27" ADULT HEIGHT	PART NUMBER
"G"	6468
"G"	1922

*FINISH WALL OVER MOUNTING PLATE AND BEHIND BACK PANEL. MAKE SURE THAT FINISHED WALL EXTENDS WITHIN THE BRACKET/BOWL MOUNTING HOLES (TO PROVIDE SURFACE AREA FOR RUBBER SPACERS TO CONTACT).

Haws
Since 1906

1455 KLEPPE LANE
SPARKS, NEVADA 89431
(775) 369-4712 FAX (775) 359-7424
E-MAIL: HAWS@HAWSCO.COM
WEBSITE: WWW.HAWSCO.COM

ECN NO. REVISED PER BY:	MODEL(S)
ECN: 6148 JG	6700
DATE: CHKD:	
09/20/23 JG	
APPROVED: FV	DATE: 02/11/25
SCALE: N/A	DRAWING TYPE: INSTALLATION
SIZE: A	SHEET: 2 OF 6
REVISION: 26	



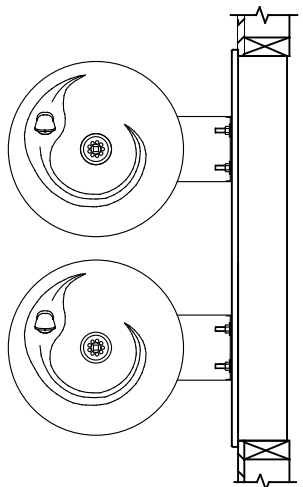
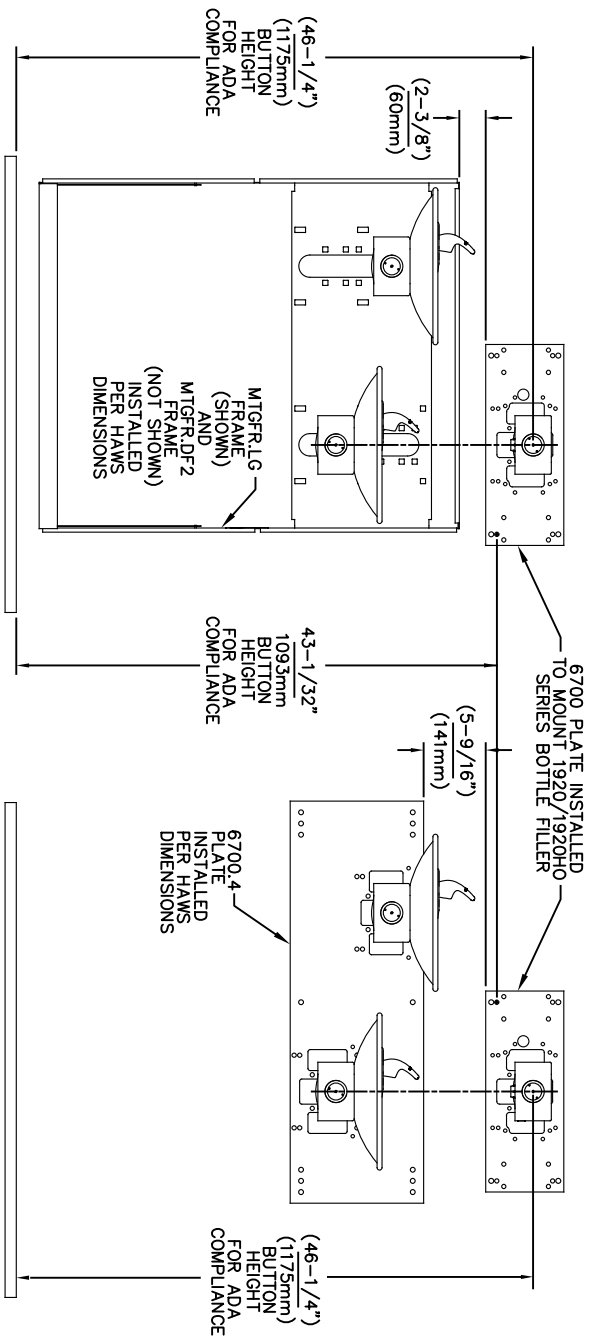
NOTES:
 1. WHEN INSTALLING THIS UNIT, LOCAL, STATE OR FEDERAL CODES SHOULD BE ADHERED TO.
 2. BACK PANELS (OPTIONAL) NOT SHOWN FOR CLARITY.

6700 MOUNTING PLATE FOR USE WITH BOTTLE FILLER (SEE SHEET 1 FOR USE WITH DRINKING FOUNTAINS)

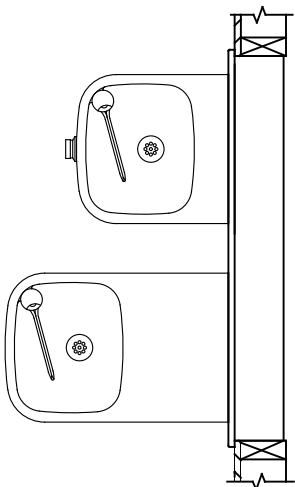
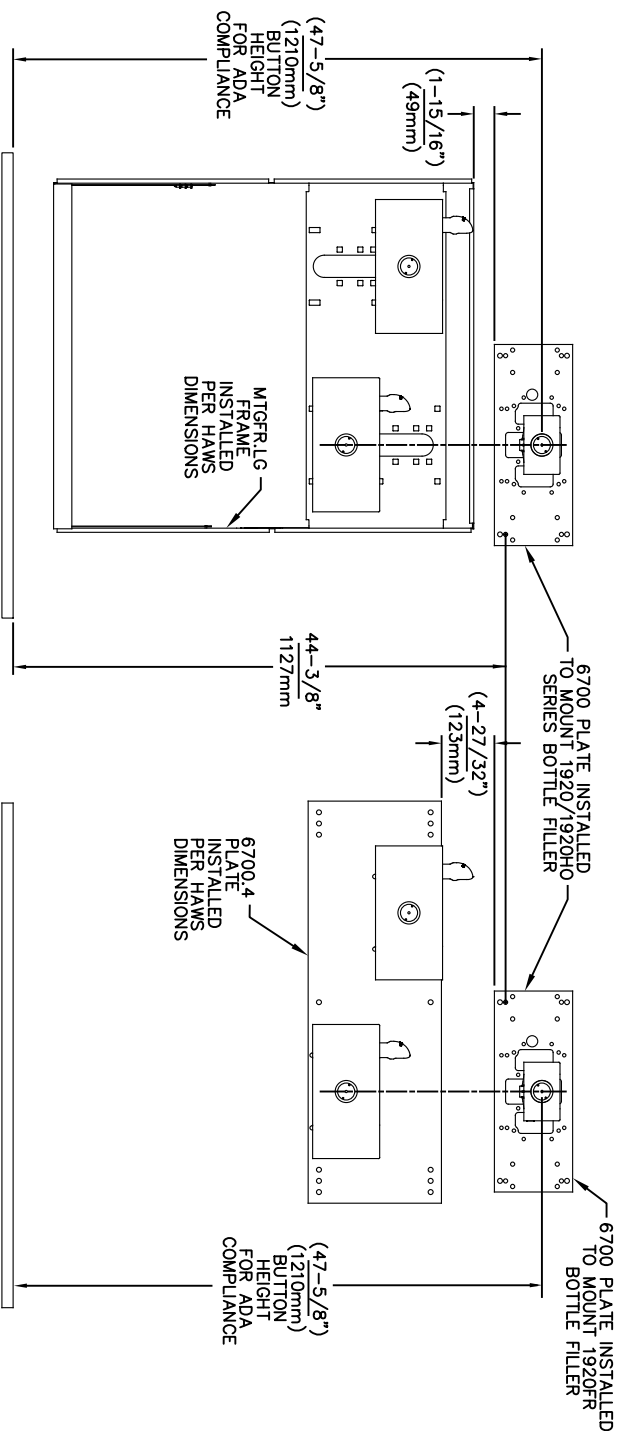
Haws
Since 1906

1455 KLEPPE LANE
 SPARKS, NEVADA 89431
 (775) 359-4712 FAX (775) 359-7424
 E-MAIL: HAWS@HAWS.CO.COM
 WEBSITE: WWW.HAWS.CO.COM

ECN NO. REVISED PER BY:	MODEL(S)
ECN 6148 JG	6700
DATE: 02/09/17	
CHK'D: JG	
DATE:	
APPROVED: EV	SCALE: N/A
DATE: 02/11/25	DRAWING TYPE: INSTALLATION
SIZE: A	SHEET: 3 OF 6
REVISION: 26	



USE THESE MOUNTING DIMENSIONS IF INSTALLING OVER HAWS FOUNTAIN
 MODEL: 1011, 1011HO, 1011HO2, 1011HPS, 1011HPSHO, 1011HPSHO2, 1011HPSMS, 1011MS, 1011MSHO, 1011MSHO2, 1011.8, 1011.8HO, 1011.8HO2 & 1011.8HPSMS AT 27" ADULT HEIGHT
 INSTALL THE 6700 ABOVE THE FOUNTAIN MOUNTING PLATE OR FRAME AT THE DIMENSION SHOWN FOR CORRECT BACKPANEL SPACING
BACK PANELS FOR BOTTLE FILLERS (NOT SUPPLIED - OPTIONAL) ARE NOT SHOWN FOR CLARITY.

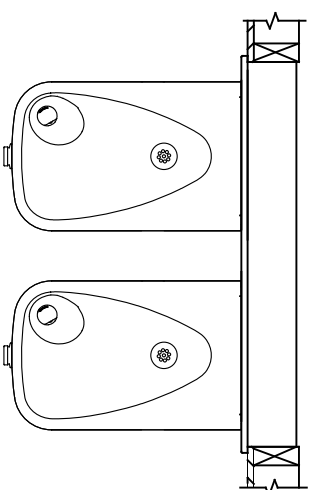
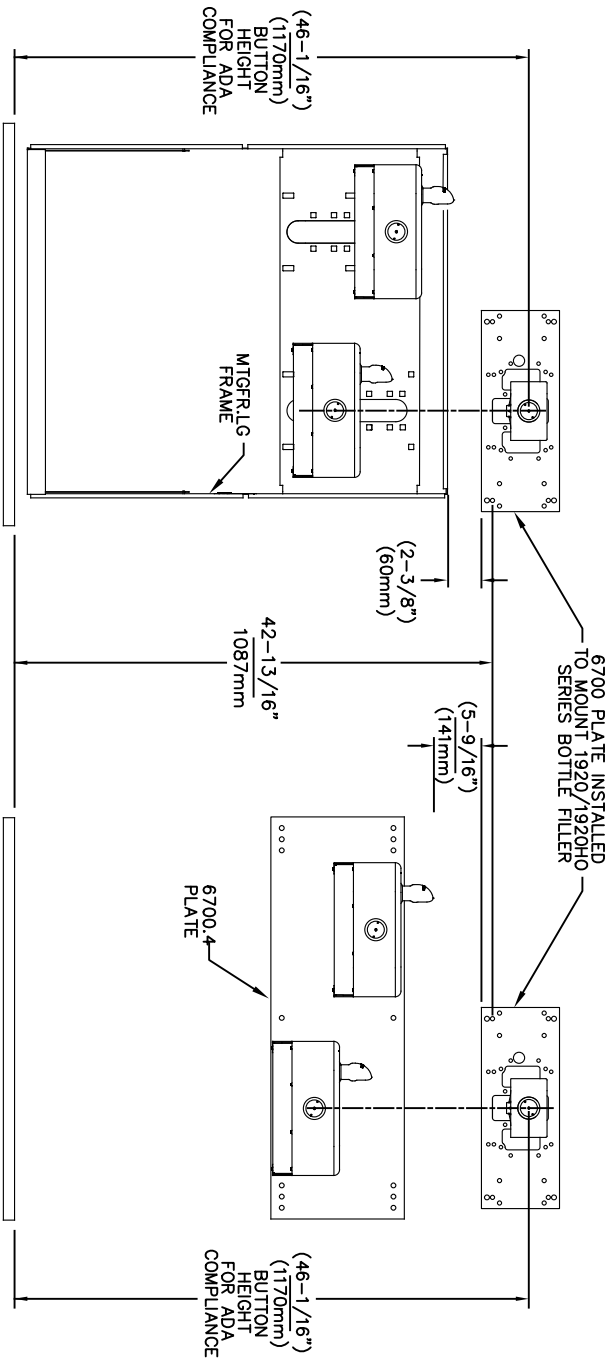


USE THESE MOUNTING DIMENSIONS IF INSTALLING OVER HAWS FOUNTAIN
 MODEL: 1119, 1119.14, 1119.14HO, 1119.14HO2, 1119FR, 1119FRB, 1119FRP, 1119HO, 1119HO2 & 1119.8 AT 27" ADULT HEIGHT
 INSTALL THE 6700 ABOVE THE FOUNTAIN MOUNTING PLATE OR FRAME AT THE DIMENSION SHOWN FOR CORRECT BACKPANEL SPACING
BACK PANELS FOR BOTTLE FILLERS (NOT SUPPLIED - OPTIONAL) ARE NOT SHOWN FOR CLARITY.

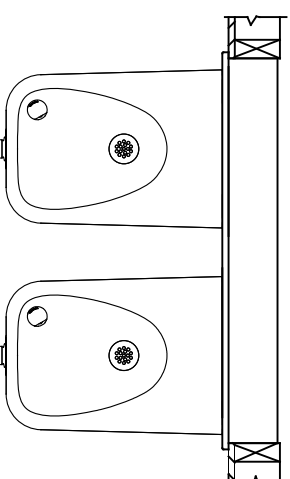
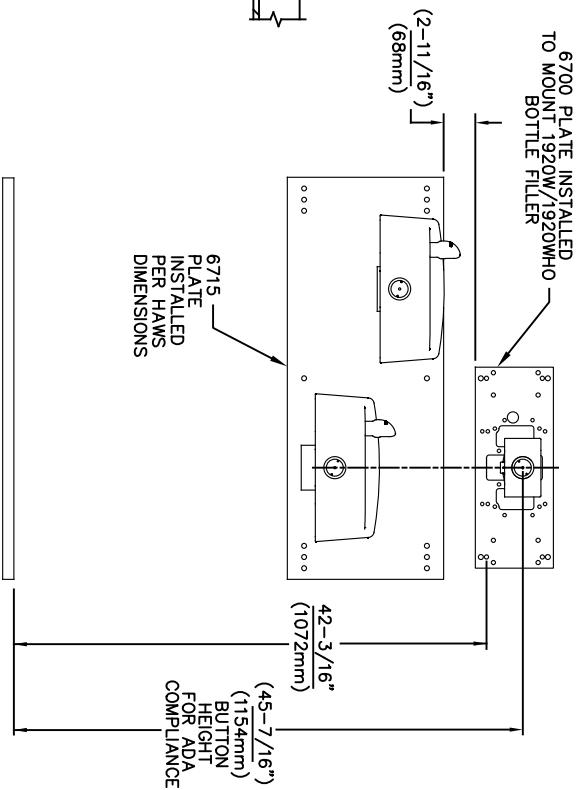
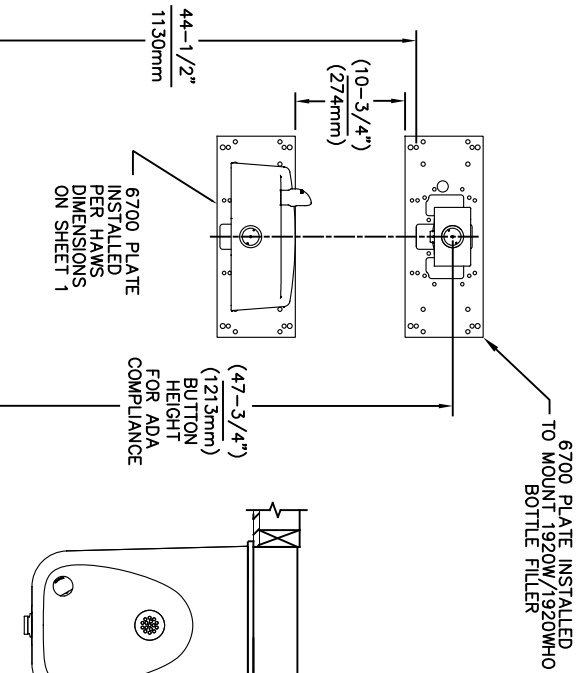
- NOTES:
 1. WHEN INSTALLING THIS UNIT, LOCAL, STATE OR FEDERAL CODES SHOULD BE ADHERED TO.
 2. BACK PANELS (OPTIONAL) NOT SHOWN FOR CLARITY.

6700 MOUNTING PLATE
 FOR USE WITH BOTTLE FILLER
 (SEE SHEET 1 FOR USE WITH
 DRINKING FOUNTAINS)

		MODEL(S)	
6700			
ECON. NO. REVISED PER BY:	DATE:	CHKD.:	DATE:
5550	05/14/20	JG	JG
APPROVED:	DATE:	SCALE:	DRAWING TYPE:
FV	02/11/25	1:13	INSTALLATION
1459 KLEPPE LANE		SPARKS, NEVADA 89431	
(775) 359-4712		FAX (775) 359-7424	
E-MAIL: HAWS@HAWS.CO.COM		WEBSITE: WWW.HAWS.CO.COM	
PART NUMBER		REVISION:	
0002080016		26	



USE THESE MOUNTING DIMENSIONS IF INSTALLING OVER HAWS FOUNTAIN MODEL: 1117, 1117.8 AT 27" ADULT HEIGHT
 INSTALL THE 6700 ABOVE THE FOUNTAIN MOUNTING PLATE OR FRAME AT THE DIMENSION SHOWN FOR CORRECT BACKPANEL SPACING
 BACK PANELS FOR BOTTLE FILLERS (NOT SUPPLIED - OPTIONAL) ARE NOT SHOWN FOR CLARITY.



USE THESE MOUNTING DIMENSIONS IF INSTALLING OVER HAWS FOUNTAIN MODEL: 1311, 1501 AT 27" ADULT HEIGHT
 INSTALL THE 6700 ABOVE THE FOUNTAIN MOUNTING PLATE AT THE DIMENSION SHOWN FOR CORRECT BACKPANEL SPACING (IF APPLICABLE).
 BACK PANEL FOR BOTTLE FILLER (NOT SUPPLIED - OPTIONAL) IS NOT SHOWN FOR CLARITY.

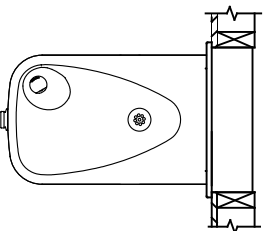
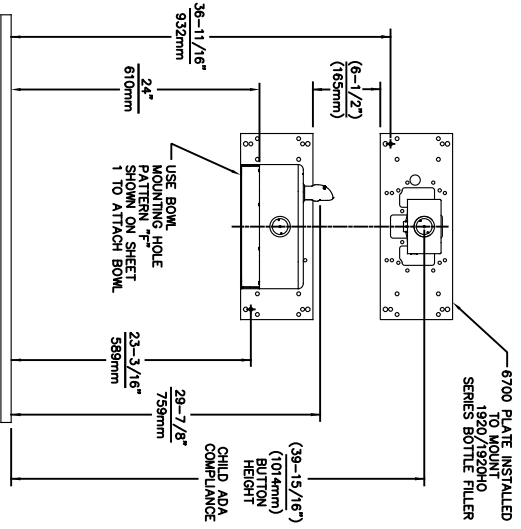
- NOTES:
 1. WHEN INSTALLING THIS UNIT, LOCAL, STATE OR FEDERAL CODES SHOULD BE ADHERED TO.
 2. BACK PANELS (OPTIONAL) NOT SHOWN FOR CLARITY.

6700 MOUNTING PLATE
 FOR USE WITH BOTTLE FILLER
 (SEE SHEET 1 FOR USE WITH
 DRINKING FOUNTAINS)

		MODEL(S)	
Since 1906		6700	
ECN NO. REVISED PER BY:	DATE:	SCALE:	DRAWING TYPE:
5550	05/14/20	1:13	INSTALLATION
ECN: 6148	CHKD:	SIZE:	SHEET
FV	JG	A	5 OF 6
APPROVED:	DATE:	SCALE:	DRAWING TYPE:
FV	02/11/25	1:13	INSTALLATION

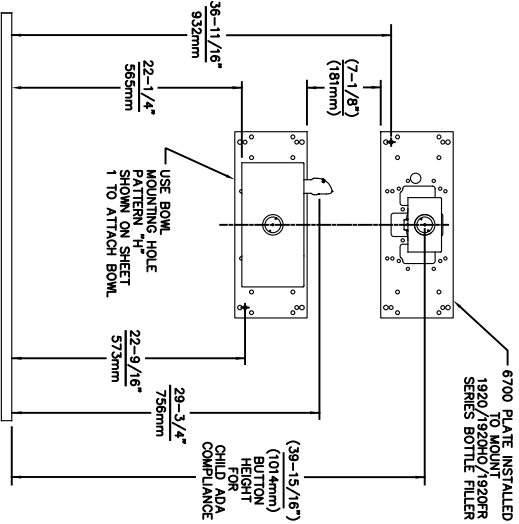
1459 KLEPPE LANE
 SPARKS, NEVADA, 89431
 (775) 359-4712 FAX (775) 359-7424
 E-MAIL: HAWS@HAWS.CO.COM
 WEBSITE: WWW.HAWS.CO.COM

PART NUMBER: 0002080016
 REVISION: 26

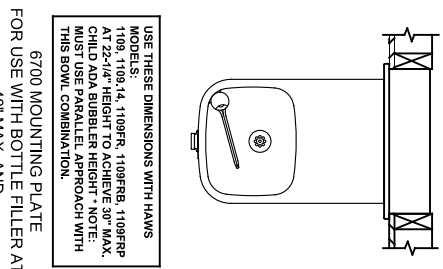


USE THESE DIMENSIONS WITH HAWS MODEL 1107PCH AT 24\"/>

6700 MOUNTING PLATE FOR USE WITH BOTTLE FILLER AT 40\"/>

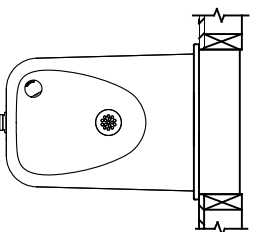
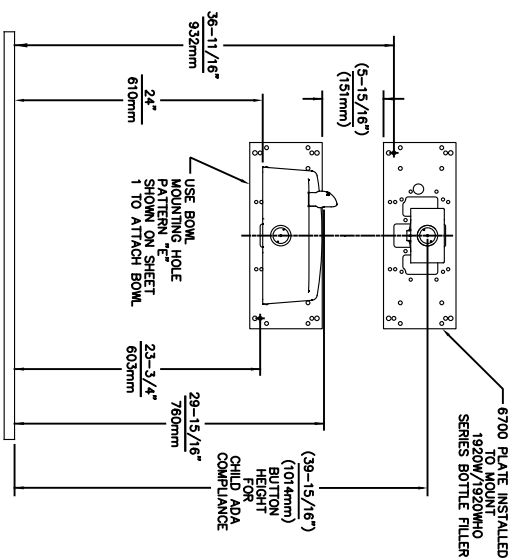


6700 PLATE INSTALLED TO MOUNT 1920/1920R SERIES BOTTLE FILLER



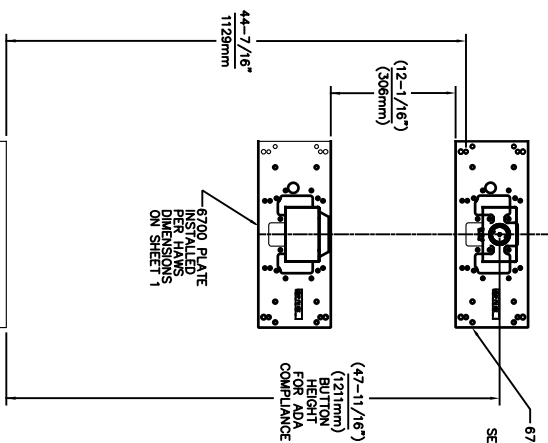
USE THESE DIMENSIONS WITH HAWS MODEL: 1109, 1109.14, 1109FR, 1109FRB, 1109FRP AT 22-1/4\"/>

NOTES:
1. WHEN INSTALLING THIS UNIT, LOCAL, STATE OR FEDERAL CODES SHOULD BE ADHERED TO.
2. ONE PIECE BACK PANELS BP15C (FOR USE WITH MODELS 1107L, 1109 SERIES & BOTTLE FILLER) & BP15WC (FOR USE WITH MODEL 1311 & BOTTLE FILLER) ARE USED FOR CHILD HEIGHT APPLICATIONS AND ARE OPTIONAL (NOT SHOWN FOR CLARITY).



USE THESE DIMENSIONS WITH HAWS MODEL 1107PCH AT 24\"/>

6700 MOUNTING PLATE FOR USE WITH BOTTLE FILLER AT 40\"/>



6700 PLATE INSTALLED TO MOUNT 1920/1920HO SERIES BOTTLE FILLER

USE THESE MOUNTING DIMENSIONS IF INSTALLING OVER HAWS WASTE DRIP TRAY. MODEL: 6468 (SHOWN), 1922 (MODEL 1922 INCLUDES 1920 BOTTLE FILLER). THE 1920 BOTTLE FILLER BP15C BACK PANELS (NOT SHOWN) AT 27\"/>

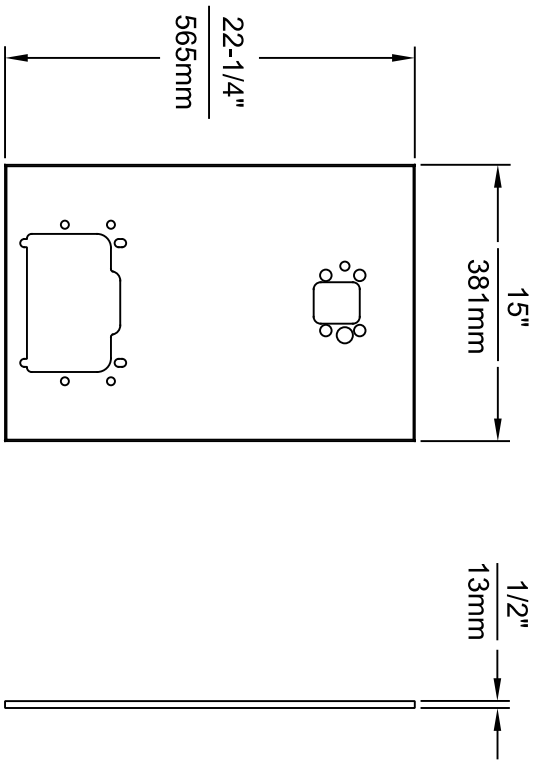
6700 MOUNTING PLATE FOR USE WITH BOTTLE FILLER (SEE SHEET 1 FOR USE WITH DRINKING FOUNTAINS AND WASTE DRIP TRAY)

Since 1906

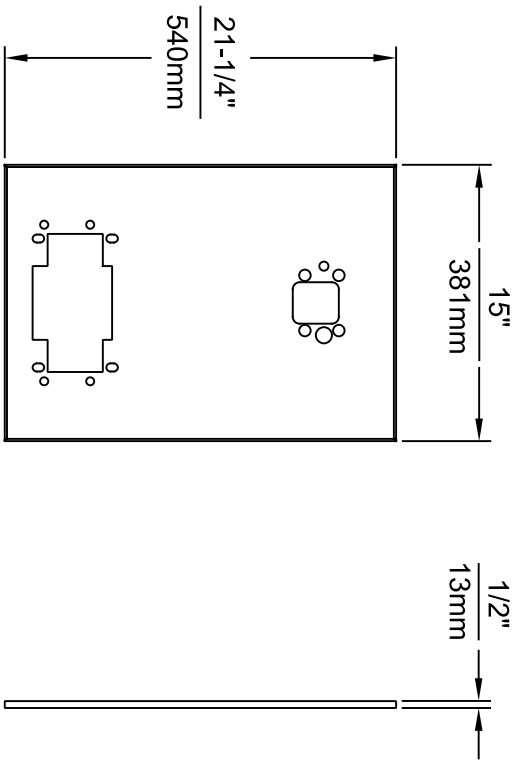
1459 KLEPPE LANE
SPARKS, NEVADA, 89431
(775) 359-4712 FAX (775) 359-7424
E-MAIL: HAWS@HAWSCO.COM
WEBSITE: WWW.HAWSCO.COM

ECN NO. REVISED PER BY:	MODEL(S)
5893 1	6700
DATE: 07/26/23	SCALE: 1:13
CHKD: JG	DRAWING TYPE:
DATE: 02/11/25	INSTALLATION:
APPROVED: FV	SHEET 6 OF 6

PART NUMBER: 0002080016
REVISION: 26

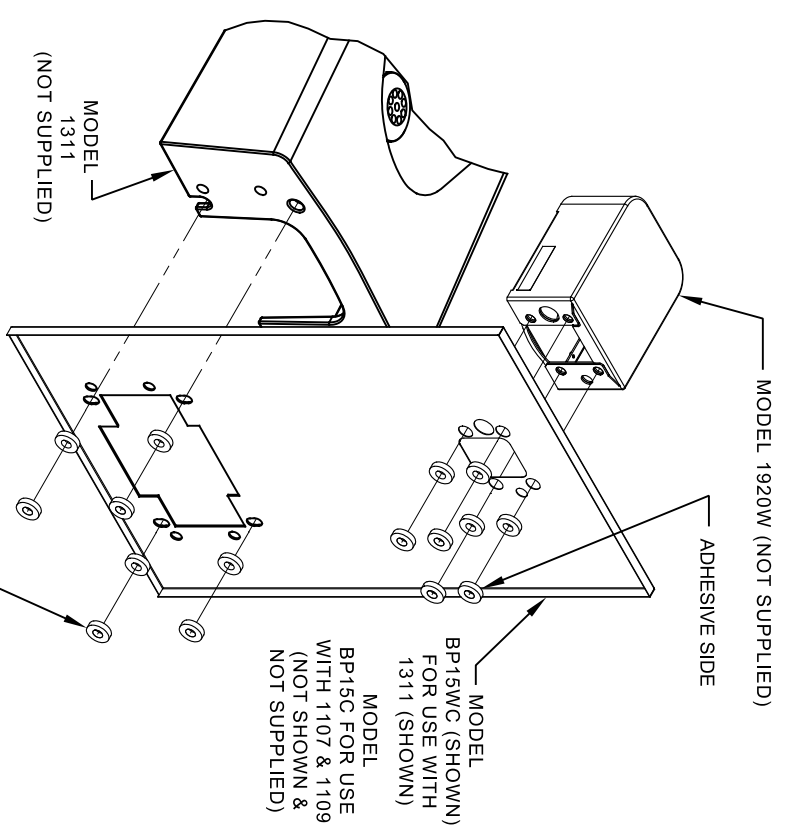


MODEL BP15C
(FOR MODELS 1107 & 1109)



MODEL BP15WC
(FOR MODEL 1311)

- NOTES:
1. WHEN INSTALLING THIS UNIT, LOCAL, STATE OR FEDERAL CODES SHOULD BE ADHERED TO.
 2. BOTTLE FILLER AND DRINKING FOUNTAIN SHOWN FOR REFERENCE ONLY (NOT SUPPLIED).



- 16 SPACERS (2 PER MOUNTING BOLT IF BOTH MOUNTING PLATES (MODEL 6700 - NOT SUPPLIED) ARE INSTALLED BEHIND THE FINISHED WALL. USE 1 SPACER PER BOLT FOR RETROFITS WHERE BOTH MOUNTING PLATES (MODEL 6700R - NOT SUPPLIED) ARE INSTALLED IN FRONT OF THE FINISHED WALL)

ONE PIECE INSTALLATION ON SINGLE FOUNTAIN

SHOWN FROM REAR
(MODEL BP15C & BP15WC ARE COMBINATION BOTTLE FILLER AND FOUNTAIN BACK PANELS USED FOR CHILD HEIGHT APPLICATIONS ONLY ON MODELS 1107, 1109 & 1311 - BOTTLE FILLER & DRINKING FOUNTAIN NOT SUPPLIED)

		1455 KLEPPE LANE SPARKS, NEVADA, 89431 (775) 359-4712 FAX (775) 359-7424 E-MAIL: HAWS@HAWSCC.COM WEBSITE: WWW.HAWSCC.COM	
EQN. NO. REVISED PER BY: MODEL(S) SIZE EQN. 6146 N. JIG DRAWN BY: DATE: CHG. NO.	DRAWING, BACK PANEL, SPACER INSTALLATION FOR BP15 SERIES & BP32 SERIES, BOTTLE FILLER	PART NUMBER 0510000493	REVISION 6
APPROVED: DATE: SCALE: 1:1 DRAWING TYPE: INSTALLATION SIZE: A SHEET 3 OF 3			