

FEATURES & BENEFITS

CONSTRUCTION

Rugged ADA accessible 18 gauge Type 304 Stainless Steel swirl design bowl, 14 gauge Type 304 Stainless Steel bracket, and a vandal-resistant bottom plate provides a long lasting unit with added peace of mind.

QUALITY CONTROL

Pre-built fountain is pressure tested to ensure no leaks and proper functionality

MOUNTING

3/16" (.47 cm) thick steel mounting plate (sold separately) is larger, thicker and stronger than any other plate in the industry, and shall include the all-thread studs, nuts, and washers which allows for easy installation to a framed wall. (P-trap and stop require rear access)

BUBBLER HEAD

Polished chrome-plated brass bubbler head with integral laminar flow prevents splashing while providing a superior flow pattern. The integral 11/16" dia. basin shank and stainless anti-rotation roll pin for vandal resistance strength. Shielded, angled stream opening provides a steady source of drinking water at .45 gpm.

DRINKING FOUNTAIN VALVE

The push-button activated valve offers the only all stainless steel valve body that is machined out of solid bar stock, is fully serviceable through the front of the push button assembly offering access to the water control cartridge and integral water supply strainer, and with front access to the water stream height adjustment for easy maintenance without having to remove the valve. Operating pressure range of 30 to 90 psi (2.1 to 6.2 bar).

VANDAL RESISTANT

The bubbler head, push button, round bowl, drain strainer and bottom plate are locked in place, discouraging unwanted vandal tampering.

OPTIONS

- Water Filter: Model 6480 filter kit with 3000 gallon carbon block filter, filter head, and mounting bracket.
- Bottle Filler: Model 1920, bottle filler can be a stand-alone station, or mounted above Haws 1001, 1011, 1107L, 1109, 1117L, and 1119 series drinking fountain models.
- Remote Drinking Fountain Water chiller: Model HCR8, 8 gph (30.3 L) remote water chiller provides instantaneous cooling to meet a continuous demand for chilled water.
- Support Frame: Model 6800 In-wall floor mounted fixture support legs, welded steel 4-bolt floor flanges, and supplied with 'U' bolts and hardware.

For more information, visit www.hawsc.com or call (888) 640-4297.



SPECIFICATIONS

Model 1001 vandal-resistant wall mounted barrier-free drinking fountain shall include an 18 gauge Type 304 Stainless Steel satin finish basin with integral swirl design, 14 gauge Type 304 Stainless Steel wall bracket, 100% lead-free waterways, vandal resistant push-button operated stainless steel valve with front accessible cartridge and flow adjustment, polished chrome plated brass vandal resistant bubbler head with integral laminar anti-squirt flow, chrome-plated brass vandal-resistant waste strainer, vandal-resistant bottom plate, and 1-1/4" (3.2 cm) O.D. waste pipe. (P-trap and stop require rear access).

REQUIRES MODELS 1001 & 6700 ORDERED SEPARATELY

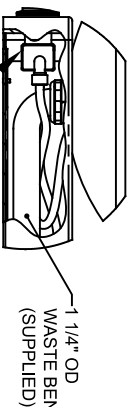
APPLICATIONS

Perfect for either public or private indoor/outdoor settings, model 1001 is a great fit in areas where aesthetics are important to the overall appeal of the architecture. This series is precisely mounted, making it a nice addition to any surrounding. Beautiful satin finish helps to maintain the fountains overall appeal so it always remains looking as new as it did when it was installed. Specifically, this type of wall mounted drinking fountain may be placed in settings such as: schools and other locations in and around office buildings where the temperature remains above freezing. Model meets all current Federal Regulations for the disabled including those in the Americans with Disabilities Act. Haws manufactures drinking fountains, faucets and electric water coolers to be lead-free by all known definitions including NSF/ANSI/CAN 61- Section 9, NSF/ANSI/CAN 372, California Proposition 65, and the Federal Safe Drinking Water Act. Product is compliant to California Health and Safety Code 116875 (AB 1953-2006), and 116876 (AB 100) "NSF/ANSI/CAN 61: Q ≤ 1".

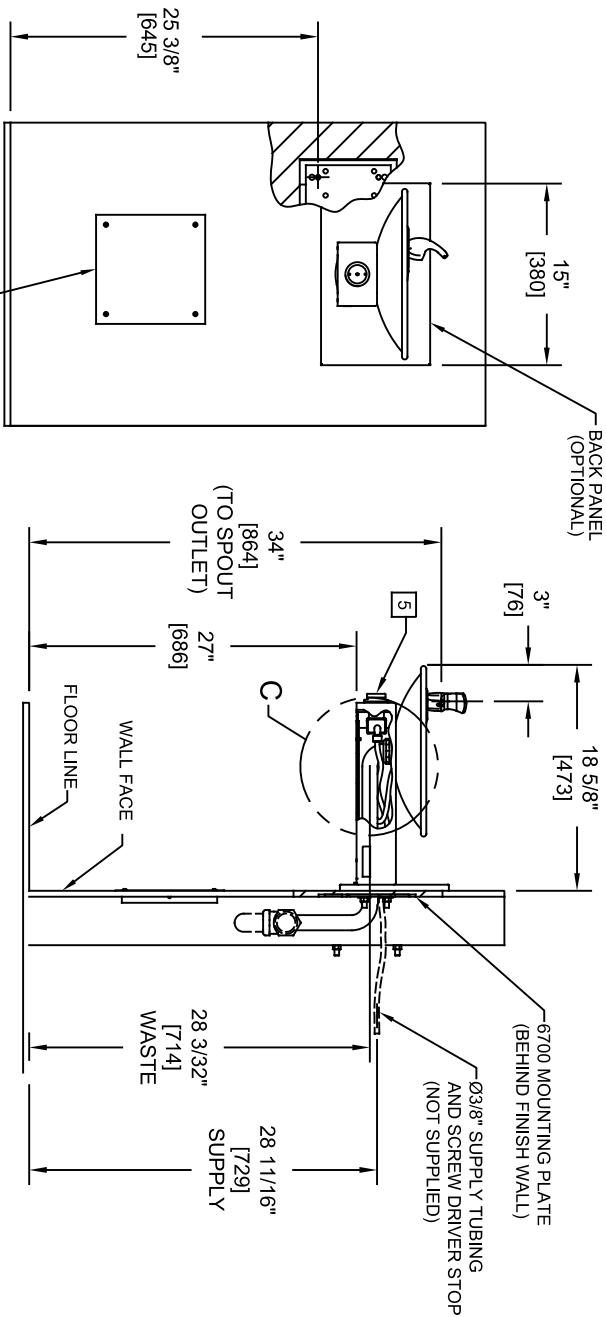
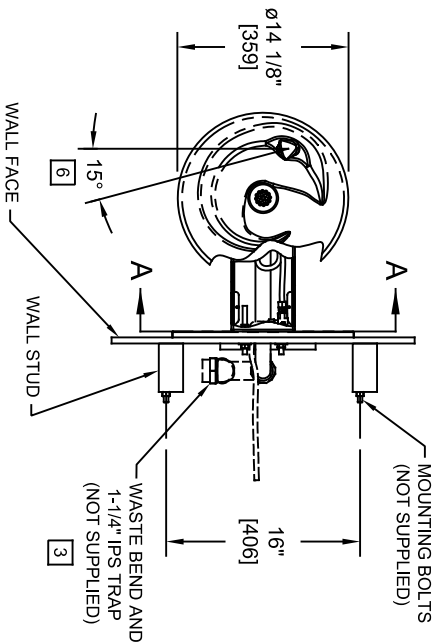


NOTES:

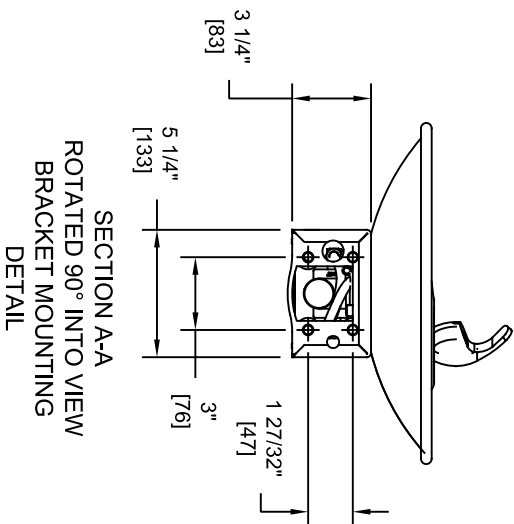
1. HOLD ROUGH-IN DIMENSIONS $\pm 1/8"$ (3.2mm).
2. WHEN INSTALLING THIS UNIT, LOCAL, STATE, OR FEDERAL CODES SHOULD BE ADHERED TO FOR INSTALLATION DIMENSIONS (LOCATIONS), WASTE AND SUPPLY REQUIREMENTS OTHER THAN SHOWN.
3. INSTALLER MUST PROVIDE TRAP FOR PROPER INSTALLATION.
4. REMOVE VALVE FROM PUSH BUTTON TO INSTALL WASTE ELBOW ONTO BOWL. AFTER WASTE ELBOW IS INSTALLED, REINSTALL VALVE AND ADJUST FLOW.
5. REFER TO 5874 SERIES OPERATION AND MAINTENANCE MANUAL FOR PUSH BUTTON AND VALVE INSTALLATION MAINTENANCE INSTRUCTIONS.
6. MAXIMUM ADJUSTABLE RANGE IS 15° FROM PARALLEL TO BACK WALL.



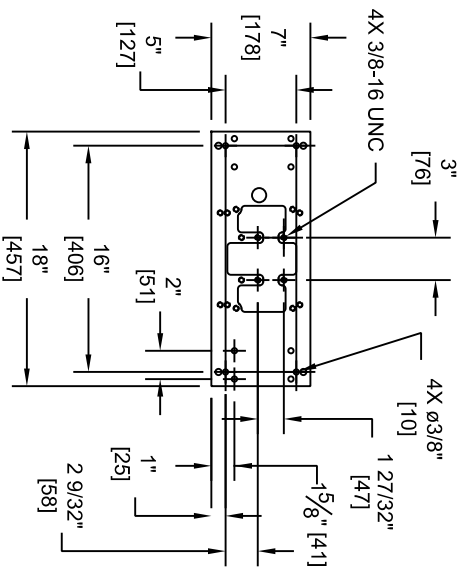
DETAIL C



OPTIONAL TRAP ACCESS PANEL MODEL 6603



SECTION A-A
ROTATED 90° INTO VIEW
BRACKET MOUNTING
DETAIL

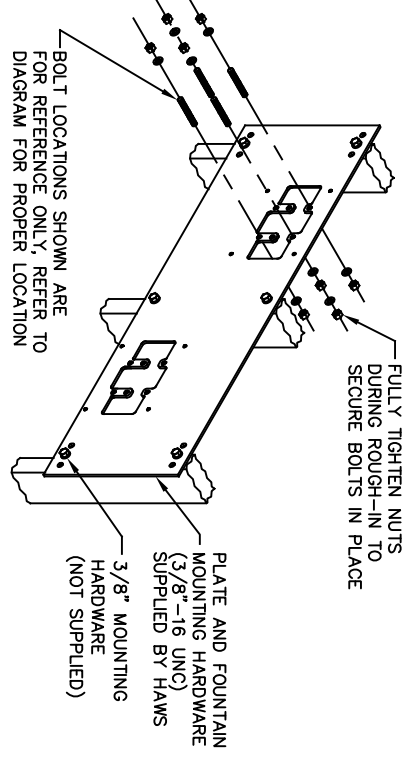
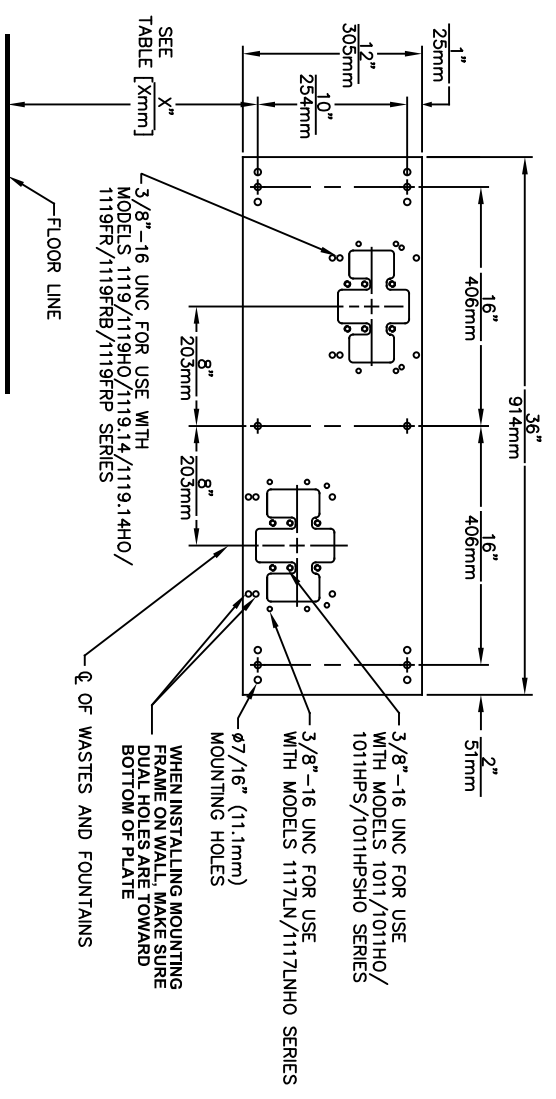


**6700 MOUNTING PLATE
MUST BE INSTALLED BEFORE FINISH WORK
THIS PLATE IS REQUIRED - SOLD SEPARATELY.**

Since 1906

1459 KLEPPE LANE
SPARKS, NEVADA 89431
(775) 359-4712 FAX (775) 359-7424
E-MAIL: HAWS@HAWS.CO.COM
WEBSITE: WWW.HAWS.CO.COM

ECN NO. REVISED PER BY:	MODEL(S)	SCALE	DRAWING TYPE	INSTALLATION	SIZE	SHEET	1 OF 1
DRAWN: RTM	DATE: 05/97	CHKD: JC	DATE: 10/22/24	SCALE: 1:1	DRAWING TYPE:	INSTALLATION:	SHEET 1 OF 1
APPROVED: FV	DATE: 10/22/24	SCALE: 1:1	DRAWING TYPE:	INSTALLATION:	SIZE:	SHEET:	1 OF 1

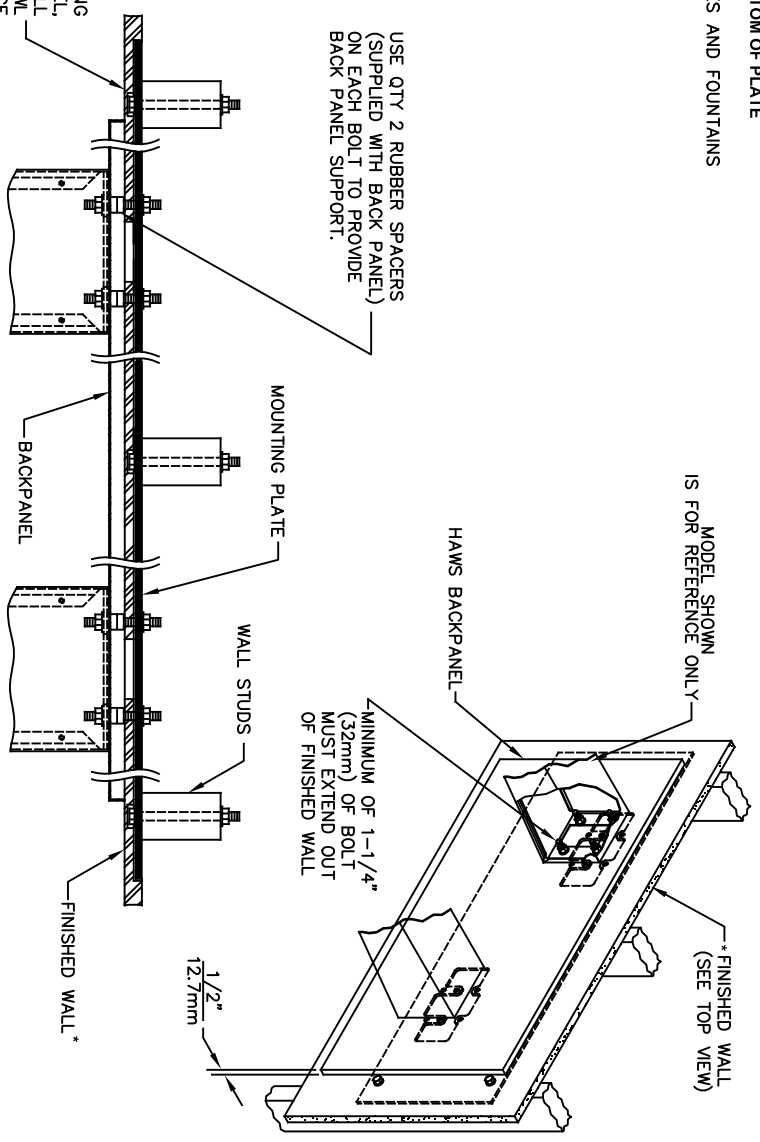


* FINISH WALL OVER MOUNTING PLATE AND BEHIND BACKPANEL, MAKE SURE THAT FINISHED WALL EXTENDS WITHIN THE BRACKET/BOWL MOUNTING HOLES (TO PROVIDE SURFACE AREA FOR RUBBER SPACERS TO CONTACT).

CAUTION

REGARDING CONCRETE/MASONRY WALL MOUNTING-DO NOT SECURE MOUNTING PLATE TO SAME SIDE OF WALL AS FOUNTAIN. AVOID COMPROMISING INTEGRITY OF WALL WHEN ANCHORING FOUNTAIN. IT IS RECOMMENDED THAT INSTALLER CALL TECHNICAL SUPPORT IF THERE ARE ANY QUESTIONS AS TO HOW TO OBTAIN A PROPER ANCHOR IN CONCRETE/MASONRY WALLS. 1-800-766-5612

DIMENSION	1011HO/HPS	MODEL	1117HO	MODEL
"X"	25-1/2" [648mm]		27" [686mm]	
LOWER SUPPLY	28-3/4" [730mm]		29-1/2" [749mm]	
LOWER WASTE	27-7/8" [708mm]		29-1/4" [743mm]	
UPPER SUPPLY	33-3/4" [857mm]		35-1/2" [892mm]	
UPPER WASTE	32-7/8" [835mm]		35-1/4" [895mm]	
DIMENSION	1119HO	MODEL	1119.14/HO	
"X"	27-5/8" [702mm]		27-5/8" [702mm]	
LOWER SUPPLY	29-5/8" [752mm]		29-5/8" [752mm]	
LOWER WASTE	30-3/4" [781mm]		30-3/4" [781mm]	
UPPER SUPPLY	35-3/8" [905mm]		35-3/8" [905mm]	
UPPER WASTE	36-1/2" [927mm]		36-1/2" [927mm]	
DIMENSION	1119FR	MODEL		
"X"	27-5/8" [702mm]			
SUPPLY WASTE	SEE FREEZE VALVE ROUGH-IN			



TOP VIEW

Haws
Since 1906

1459 KLEPPE LANE
SPARKS, NEVADA 89431
(775) 359-4712 FAX (775) 359-7424
E-MAIL: HAWS@HAWS.CO.COM
WEBSITE: WWW.HAWS.CO.COM

ECN NO. REVISED PER BY:	MODEL(S)	PART NUMBER
ECN: 6148 JG		0002080023
DATE: 04/29/83		REVISION:
CHKD: JG		20
CIL: 04/29/83		
APPROVED: FV	SCALE: N/A	DRAWING TYPE:
DATE: 02/11/25		INSTALLATION:
		SIZE: A
		SHEET: 1 OF 1