

FEATURES & BENEFITS

CONSTRUCTION

Heavy-duty cast-iron ADA accessible bowl with a glossy white enamel finish is designed for the toughest of applications, and at the same time is gentle to all users with its soft rounded corners. Unit also ships with vandal-resistant bottom plates to provide added peace of mind.

BOTTLE FILLER

Powder-coated white 14-gauge Type 304 stainless steel bottle filler housing with touchless operation and 1 gpm (3.78 L) laminar flow with 30-second obstruction time-out.

BUBBLER HEAD

Polished chrome-plated brass bubbler head with integral laminar flow prevents splashing while providing a superior flow pattern. The integral 11/16" dia. basin shank and stainless anti-rotation roll pin for vandal resistance strength. Shielded, angled stream opening provides a steady, sanitary source of drinking water at .45 gpm.

FOUNTAIN VALVES

Bottle filler incorporates a touchless sensor operated stainless steel solenoid valve controlled by a transformer, and a push-button activated valve which offers the only all stainless-steel valve body that is machined out of solid bar stock and is fully serviceable through the front of the push button assembly offering access to the water control cartridge and integral water supply strainer on the fountain.

VANDAL RESISTANT

The bubbler head, push button, drain strainer and bottom plates are locked in place, discouraging unwanted vandal tampering, and 30-second obstruction time-out to reduce tampering of sensor.



SPECIFICATIONS

Model 1311S wall mounted vandal-resistant ADA drinking fountain and motion-activated bottle filler shall include a white enameled-iron basin with 14 gauge Type 304 powder-coated Stainless Steel bottle filler bracket, 100% lead-free waterways, sensor operated solenoid valve with 30-second obstruction time-out on the bottle filler which incorporates an in-wall 3/16" thick steel mounting plate, and vandal-resistant push-button operated stainless-steel valve with front-accessible cartridge and flow adjustment on the fountain, polished chrome-plated brass vandal-resistant bubbler head with integral anti-squirt flow, 1 gpm (3.78 L) laminar flow bottle filler, chrome plated brass vandal-resistant waste strainer, vandal-resistant bottom plates, and a 1-1/4" NPT trap.

OPTIONS

- Water Filter: Model 6480 filter kit with 3000 gallon carbon block filter, filter head, and mounting bracket.
- Back Panel: Model BP15WC, one-piece panel for fountain/bottle filler combination when child-height ADA requirements are needed.
- Support Frame: Model 6800 In-wall floor mounted fixture support legs, welded steel 4-bolt floor flanges, and supplied with 'U' bolts and hardware.

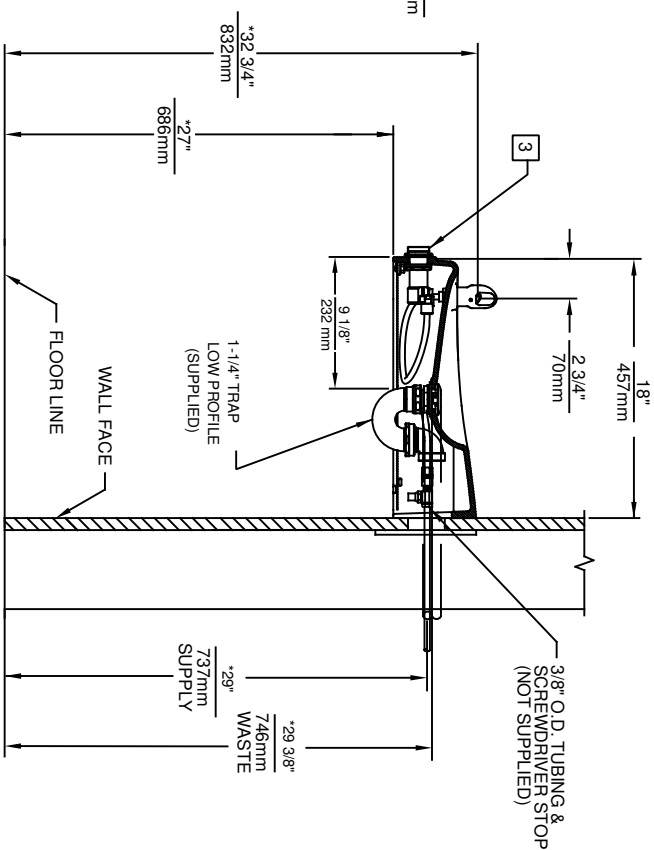
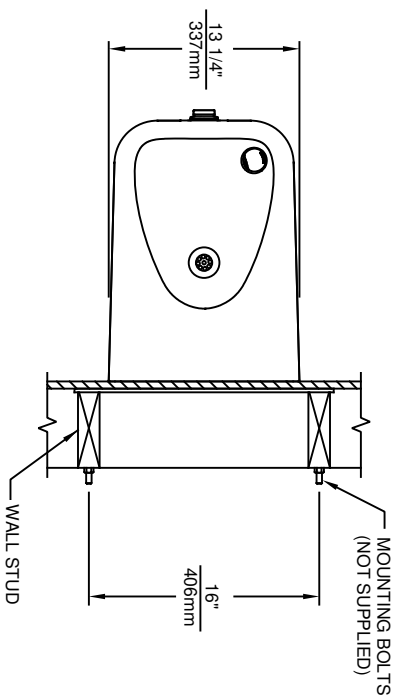
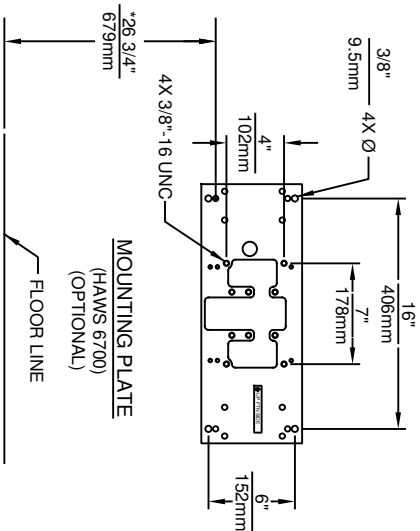
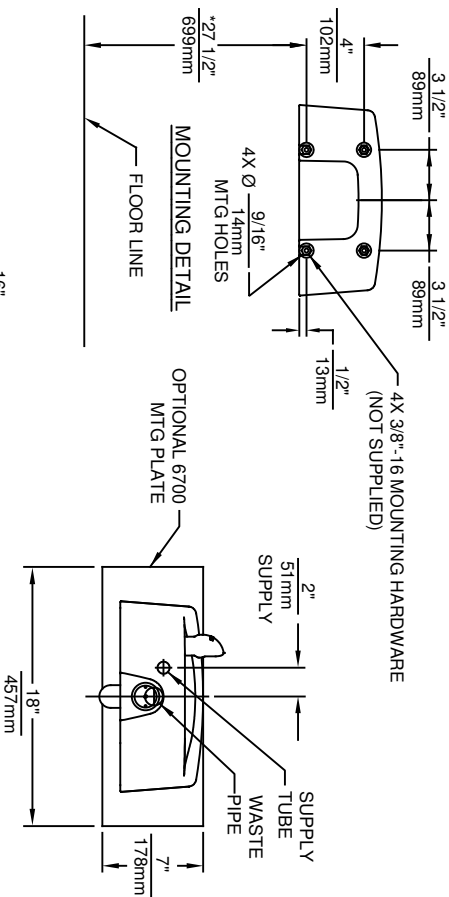
For more information, visit www.hawscow.com or call (888) 640-4297.

APPLICATIONS

Perfect for either public or private settings, our gleaming white enameled iron series is one of the sturdiest wall mounted fountains Haws produces. This series is precisely mounted, making it a nice addition to any surrounding. Elegant gloss finish and color consistency throughout the enameled iron maintain the fountains overall appeal so it always remains looking as new as it did when it was installed. Specifically, this type of wall mounted drinking fountain may be placed in settings such as: parks, schools, and other indoor/outdoor environments where the temperature remains above freezing. Model meets all current Federal Regulations for the disabled including those in the Americans with Disabilities Act. Haws manufactures drinking fountains, faucets and electric water coolers to be lead-free by all known definitions including NSF/ANSI/CAN 61-Section 9, NSF/ANSI/ CAN 372, California Proposition 65, and the Federal Safe Drinking Water Act. Product is compliant to California Health and Safety Code 116875 (AB 1953-2006), and 116876 (AB 100) "NSF/ANSI/CAN 61: Q ≤ 1".



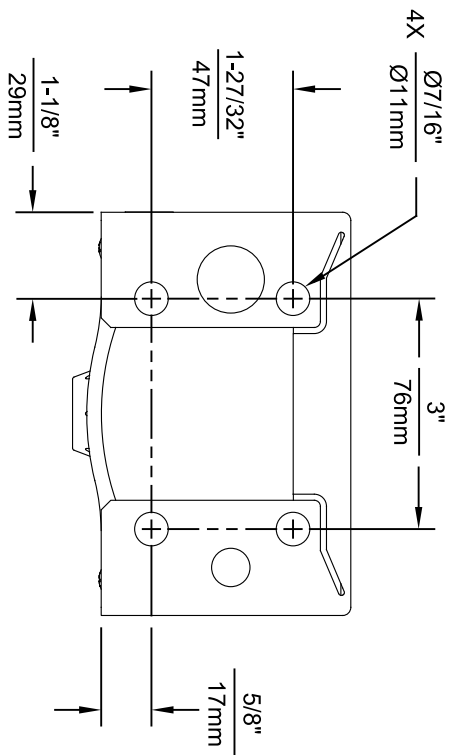
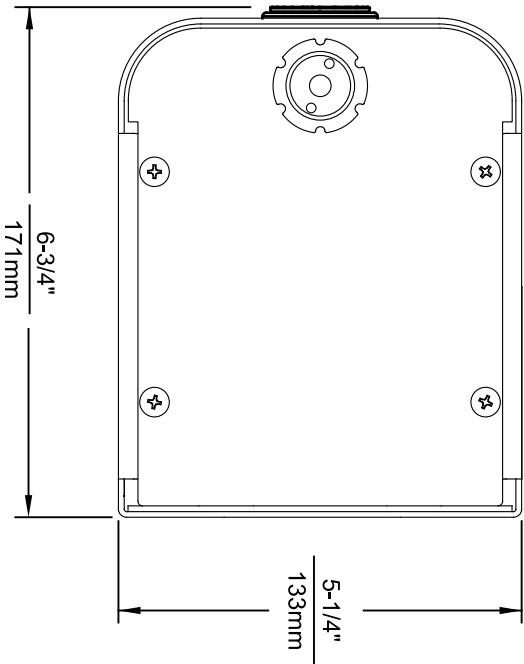
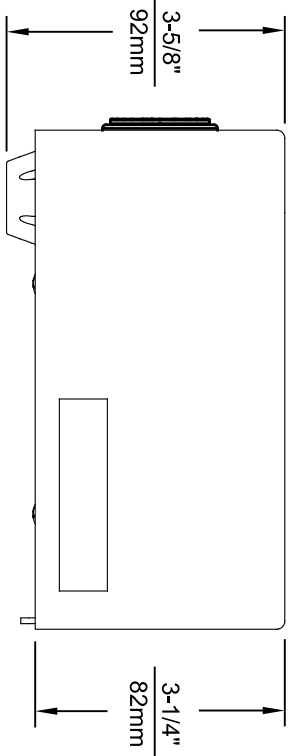
1. HOLD ROUGH-IN DIMENSIONS $\pm 1/4"$ (6.4MM).
2. WHEN INSTALLING THIS UNIT, LOCAL, STATE, OR FEDERAL CODES SHOULD BE ADHERED TO. FOR INSTALLATION HEIGHTS OTHER THAN SHOWN, DIMENSIONS MARKED (*) MUST BE ADJUSTED ACCORDINGLY.
3. REFER TO 5874 SERIES VALVE OPERATION AND MAINTENANCE MANUAL FOR PUSH BUTTON AND VALVE INSTALLATION/MAINTENANCE INSTRUCTIONS.



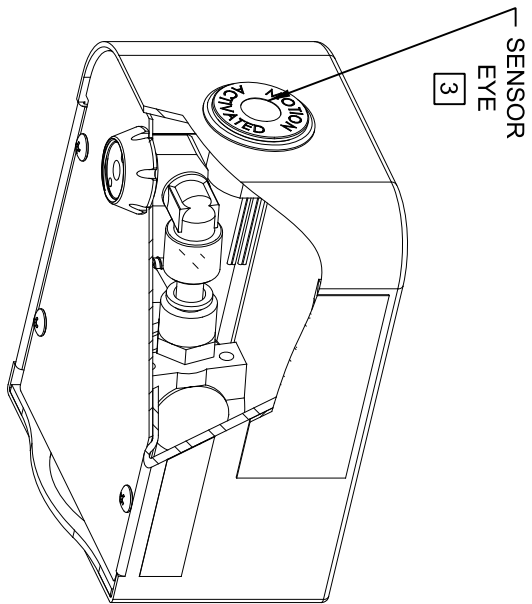
Haws

1456 KLEPPE LANE
SPARKS, NEVADA 89431
(775) 359-4712 FAX (775) 359-7424
E-MAIL: HAWS@HAWS.CO.COM
WEBSITE: WWW.HAWS.CO.COM

ECN NO. REVISED PER BY:	MODEL(S)	PART NUMBER
5010 ECN: S258	1311	0510000046.D
DRAWN: HM	DATE: 08/25/15	REVISION: 4
APPROVED: FV	SCALE: 1:14	DRAWING TYPE: INSTALLATION
DATE: 11/23/17	SIZE: A	SHEET 1 OF 1



1920HO SERIES MOUNTING HOLE LOCATIONS
(3/8"-16 UNC MOUNTING HARDWARE NOT SUPPLIED)



NOTES:

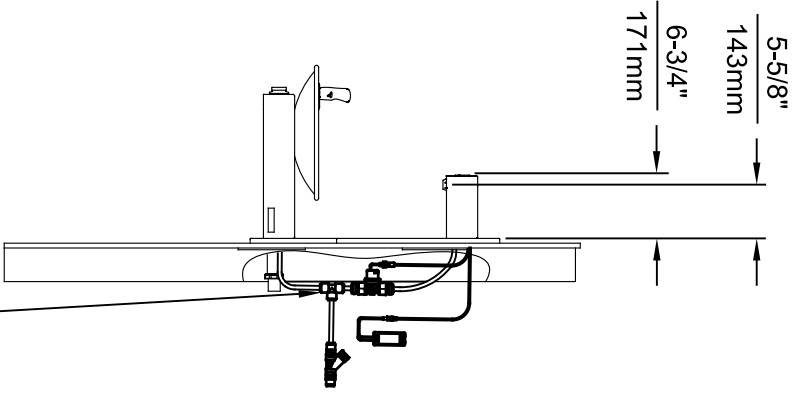
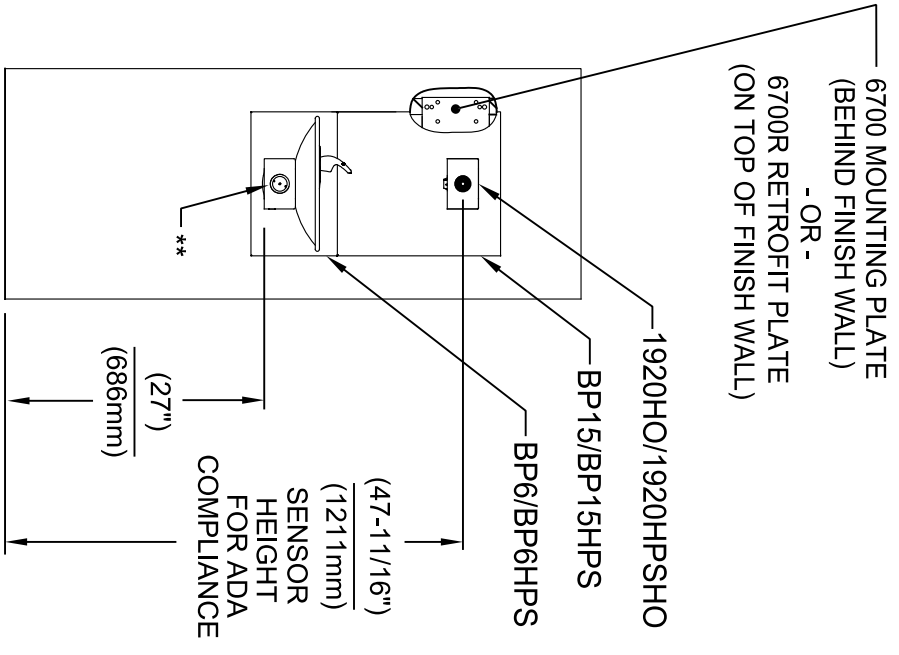
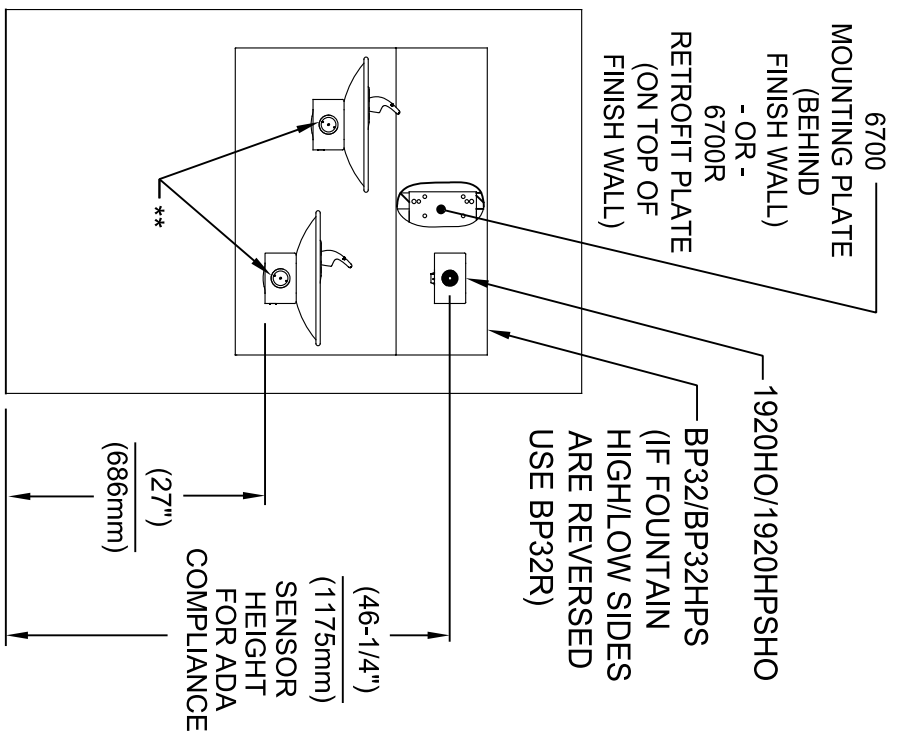
1. SEE SHEETS 2 THRU 7 FOR BOTTLE FILLER ADULT ADA HEIGHT APPLICATIONS AND SHEET 8 FOR CHILD ADA HEIGHT APPLICATIONS.
2. WHEN INSTALLING THIS UNIT, LOCAL, STATE OR FEDERAL CODES SHOULD BE ADHERED TO FOR INSTALLATION LOCATIONS, WASTE AND SUPPLY REQUIREMENTS OTHER THAN SHOWN.
- 3 REFER TO 1RKHO.H OPERATION & MAINTENANCE INSTRUCTIONS FOR SENSOR SETUP.



Haws®
Since 1906

1455 KLEPPLE LANE
SPARKS, NE/VADA 689431
(775) 359-4712 FAX (775) 359-1424
E-MAIL: HAWS@HAWS.CO.COM
WEBSITE: WWW.HAWS.CO.COM

EON NO. REVISED PERBY:		MODEL(S)		INSTALLATION	
5574	EON 6136	FV	1920HO/1920HPSHO/1920WHO	SCALE: N/A	DRAWING TYPE:
DATE:	CHK'D:	DATE:		SIZE: A1	SHEET: 1 OF 8
08/18/20	KAM				
APPROVED: FV			PART NUMBER		
11/04/24			0510001063.D		
			REVISION		
			8		

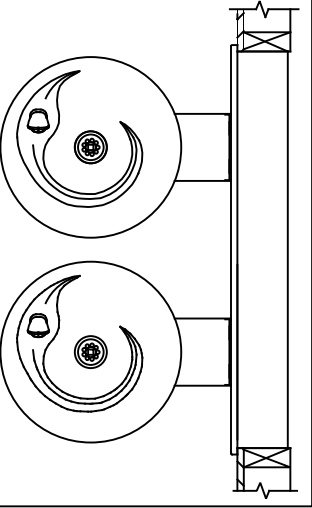


INSTALLATION ABOVE HAWWS 1011 & H1011.8 SERIES

INSTALLATION ABOVE HAWWS 1001 & H1001.8 SERIES


* IF YOUR FOUNTAIN IS THIS STYLE USE THESE DIMENSIONS

1. SEE SEPARATE INSTALLATION DRAWINGS FOR MOUNTING PLATES AND BACK PANELS (SHOWN FOR REFERENCE - NOT SUPPLIED).
2. WHEN INSTALLING THIS UNIT, LOCAL, STATE OR FEDERAL CODES SHOULD BE ADHERED TO FOR INSTALLATION LOCATIONS, WASTE & SUPPLY REQUIREMENTS OTHER THAN SHOWN.



** EXISTING PUSH BUTTON ASSEMBLY SHOWN, CAN BE CONVERTED TO HANDS OFF STYLE, USING RETRO-FIT KIT MODEL 1RKHO.H OR 2RKHO.H DEPENDING ON CUSTOMER REQUIREMENTS.

3/8" O.D. SUPPLY TUBING AND 3/8" O.D. PUSH-IN TEE SUPPLIED. (CONNECT TO FOUNTAIN SUPPLY LINE)



Haws®
Since 1906

1455 KLEPPLE LANE
SPARKS, NE/VADA 89431
(775) 359-4712 FAX (775) 359-1424
E-MAIL: HAWS@HAWS.CO.COM
WEBSITE: WWW.HAWS.CO.COM

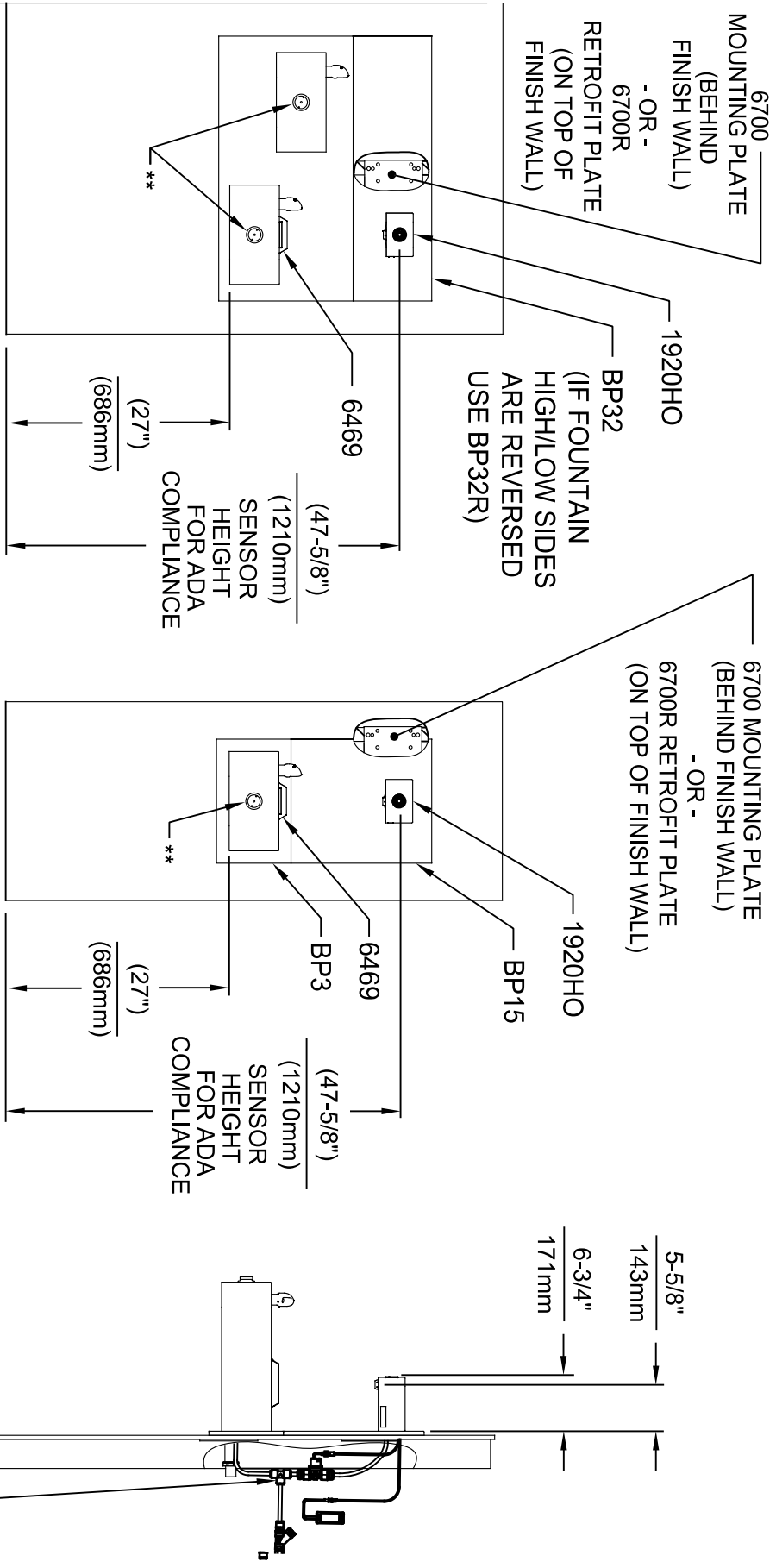
EGN NO. REVISED PERBY: FV
5574 EGN 6136 FV
DRAWN: DATE: CHK'D: FV
FV 08/18/20 KAM

MODEL(S)
1920HO/1920HPSHO/1920WHO

PART NUMBER
0510001063.D

REVISION
8

APPROVED: DATE: 1/10/24 SCALE: N/A DRAWING TYPE: INSTALLATION SIZE: A1 SHEET: 2 OF 8



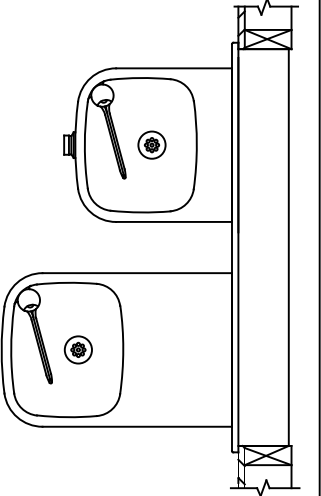
INSTALLATION ABOVE HAWS 1119 & H1119.8 SERIES

**INSTALLATION ABOVE HAWS 1109 & H1109.8 SERIES
SEE SHEET 8 FOR INSTALLATION AT CHILD HEIGHT**

* IF YOUR FOUNTAIN IS THIS STYLE USE THESE DIMENSIONS

1. SEE SEPARATE INSTALLATION DRAWINGS FOR MOUNTING PLATES, BACK PANELS AND DRIP TRAY (NOT SUPPLIED).

2. WHEN INSTALLING THIS UNIT, LOCAL, STATE OR FEDERAL CODES SHOULD BE ADHERED TO FOR INSTALLATION LOCATIONS, WASTE & SUPPLY REQUIREMENTS OTHER THAN SHOWN.



** EXISTING PUSH BUTTON ASSEMBLY SHOWN, CAN BE CONVERTED TO HANDS OFF STYLE, USING RETRO-FIT KIT MODEL 1RKHO.H OR 2RKHO.H DEPENDING ON CUSTOMER REQUIREMENTS.

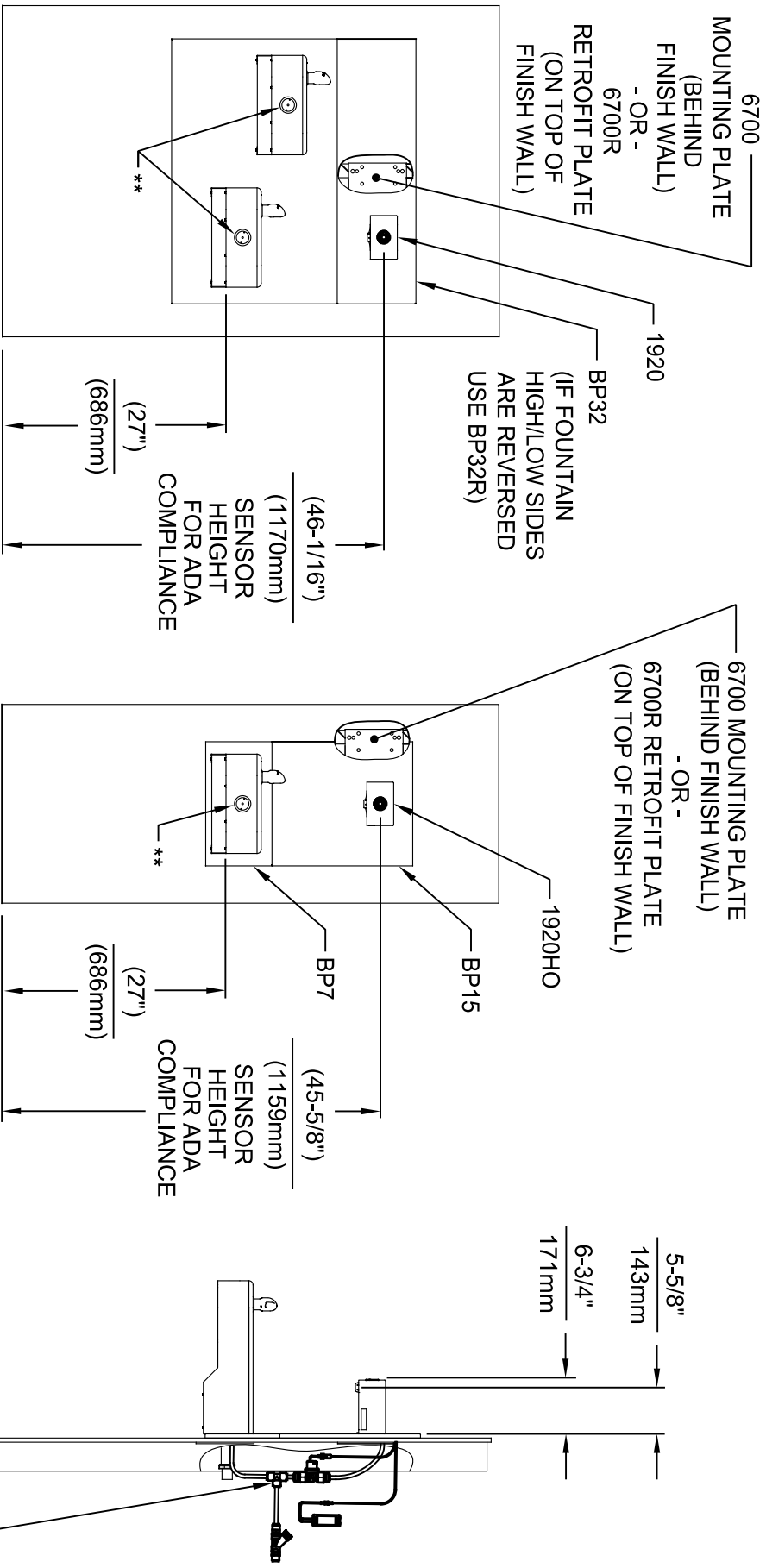
3/8" O.D. SUPPLY TUBING AND 3/8" O.D. PUSH-IN TEE SUPPLIED. (CONNECT TO FOUNTAIN SUPPLY LINE)



Haws
Since 1906

1455 KLEPPLE LANE
SPARKS, NEVADA 89431
(775) 359-4712 FAX (775) 359-1424
E-MAIL: HAWS@HAWS.CO.COM
WEBSITE: WWW.HAWS.CO.COM

ECN NO. REVISED PERBY:	MODEL(S)	PART NUMBER
5574 ECN 6136 FV	1920HO/1920HPSHO/1920WHO	0510001063.D
DRAWN: FV	DATE: 08/18/20	REVISION: 8
APPROVED: FV	DATE: 11/04/24	SCALE: N/A
DRAWING TYPE: INSTALLATION		SIZE: A1 SHEET 3 OF 8



INSTALLATION ABOVE HAWS 1117L & H1117.8 SERIES

INSTALLATION ABOVE HAWS 1107L & H1107.8 SERIES

SEE SHEET 8 FOR INSTALLATION AT CHILD HEIGHT

* IF YOUR FOUNTAIN IS THIS STYLE USE THESE DIMENSIONS

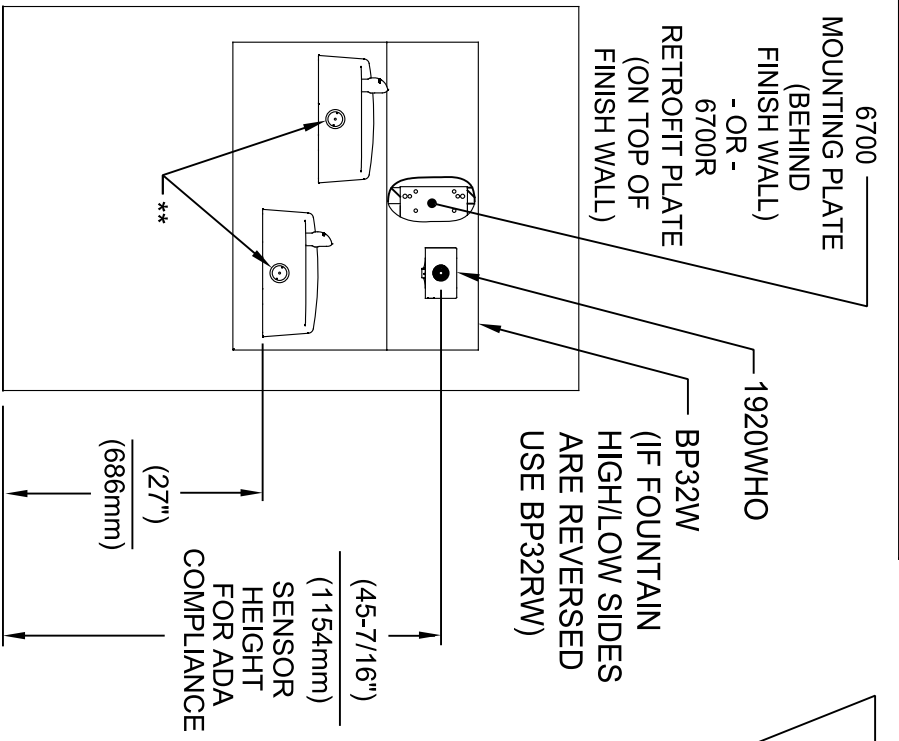
1. SEE SEPARATE INSTALLATION DRAWINGS FOR MOUNTING PLATES AND BACK PANELS (SHOWN FOR REFERENCE - NOT SUPPLIED).
2. WHEN INSTALLING THIS UNIT, LOCAL, STATE OR FEDERAL CODES SHOULD BE ADHERED TO FOR INSTALLATION LOCATIONS, WASTE & SUPPLY REQUIREMENTS OTHER THAN SHOWN.



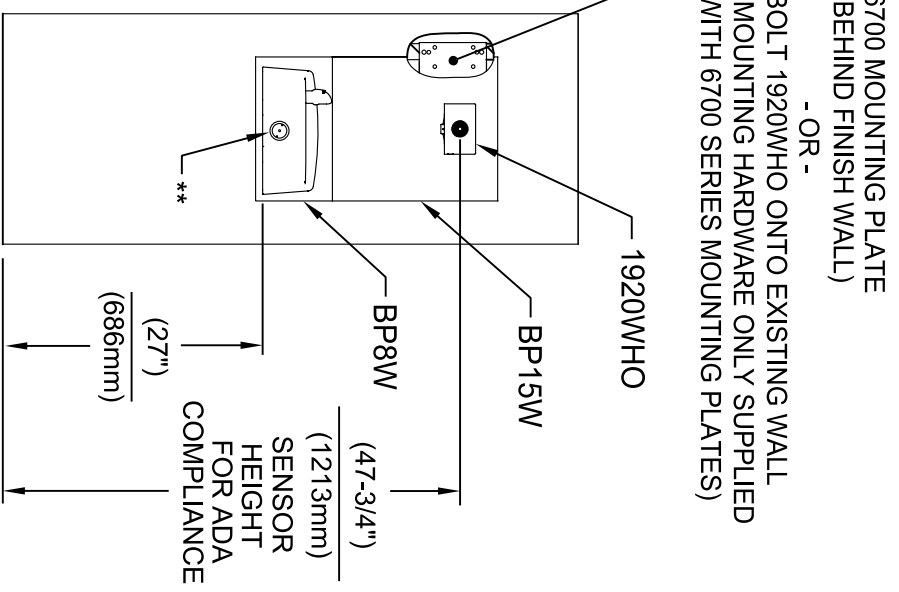
** EXISTING PUSH BUTTON ASSEMBLY SHOWN, CAN BE CONVERTED TO HANDS OFF STYLE, USING RETRO-FIT KIT MODEL 1RKHO.H OR 2RKHO.H DEPENDING ON CUSTOMER REQUIREMENTS.



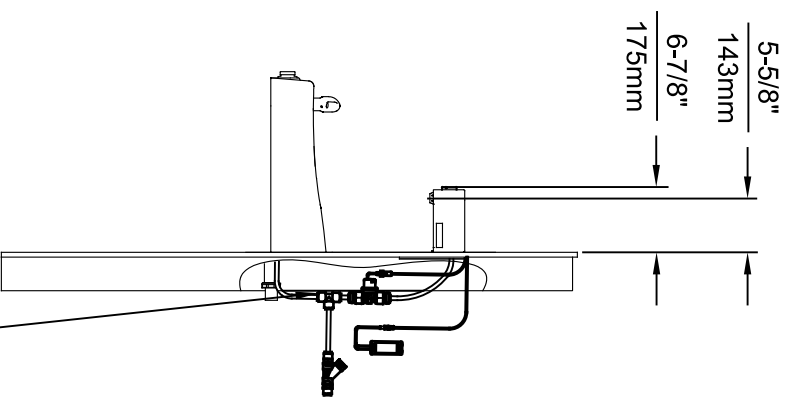
ECON. NO. REVISED PERBY:		MODEL(S)		SCALE		DRAWING TYPE		INSTALLATION	
5574	ECON. 6136	FV	1920HO/1920HPSHO/1920WHO	1/16" & 1/4"	N/A			SIZE	A1
DATE	08/18/20	CHKD.	KAM	DATE	11/04/24			SHEET	4 OF 8
APPROVED:		FV		SCALE		DRAWING TYPE		INSTALLATION	
FV		FV		SCALE		DRAWING TYPE		INSTALLATION	
FV		FV		SCALE		DRAWING TYPE		INSTALLATION	
FV		FV		SCALE		DRAWING TYPE		INSTALLATION	
FV		FV		SCALE		DRAWING TYPE		INSTALLATION	
FV		FV		SCALE		DRAWING TYPE		INSTALLATION	
FV		FV		SCALE		DRAWING TYPE		INSTALLATION	
FV		FV		SCALE		DRAWING TYPE		INSTALLATION	
FV		FV		SCALE		DRAWING TYPE		INSTALLATION	
FV		FV		SCALE		DRAWING TYPE		INSTALLATION	
FV		FV		SCALE		DRAWING TYPE		INSTALLATION	
FV		FV		SCALE		DRAWING TYPE		INSTALLATION	
FV		FV		SCALE		DRAWING TYPE		INSTALLATION	
FV		FV		SCALE		DRAWING TYPE		INSTALLATION	
FV		FV		SCALE		DRAWING TYPE		INSTALLATION	
FV		FV		SCALE		DRAWING TYPE		INSTALLATION	
FV		FV		SCALE		DRAWING TYPE		INSTALLATION	
FV		FV		SCALE		DRAWING TYPE		INSTALLATION	
FV		FV		SCALE		DRAWING TYPE		INSTALLATION	
FV		FV		SCALE		DRAWING TYPE		INSTALLATION	
FV		FV		SCALE		DRAWING TYPE		INSTALLATION	
FV		FV		SCALE		DRAWING TYPE		INSTALLATION	
FV		FV		SCALE		DRAWING TYPE		INSTALLATION	
FV		FV		SCALE		DRAWING TYPE		INSTALLATION	
FV		FV		SCALE		DRAWING TYPE		INSTALLATION	
FV		FV		SCALE		DRAWING TYPE		INSTALLATION	
FV		FV		SCALE		DRAWING TYPE		INSTALLATION	
FV		FV		SCALE		DRAWING TYPE		INSTALLATION	
FV		FV		SCALE		DRAWING TYPE		INSTALLATION	
FV		FV		SCALE		DRAWING TYPE		INSTALLATION	
FV		FV		SCALE		DRAWING TYPE		INSTALLATION	
FV		FV		SCALE		DRAWING TYPE		INSTALLATION	
FV		FV		SCALE		DRAWING TYPE		INSTALLATION	
FV		FV		SCALE		DRAWING TYPE		INSTALLATION	
FV		FV		SCALE		DRAWING TYPE		INSTALLATION	
FV		FV		SCALE		DRAWING TYPE		INSTALLATION	
FV		FV		SCALE		DRAWING TYPE		INSTALLATION	
FV		FV		SCALE		DRAWING TYPE		INSTALLATION	
FV		FV		SCALE		DRAWING TYPE		INSTALLATION	
FV		FV		SCALE		DRAWING TYPE		INSTALLATION	
FV		FV		SCALE		DRAWING TYPE		INSTALLATION	
FV		FV		SCALE		DRAWING TYPE		INSTALLATION	
FV		FV		SCALE		DRAWING TYPE		INSTALLATION	
FV		FV		SCALE		DRAWING TYPE		INSTALLATION	
FV		FV		SCALE		DRAWING TYPE		INSTALLATION	
FV		FV		SCALE		DRAWING TYPE		INSTALLATION	
FV		FV		SCALE		DRAWING TYPE		INSTALLATION	
FV		FV		SCALE		DRAWING TYPE		INSTALLATION	
FV		FV		SCALE		DRAWING TYPE		INSTALLATION	
FV		FV		SCALE		DRAWING TYPE		INSTALLATION	
FV		FV		SCALE		DRAWING TYPE		INSTALLATION	
FV		FV		SCALE		DRAWING TYPE		INSTALLATION	
FV		FV		SCALE		DRAWING TYPE		INSTALLATION	
FV		FV		SCALE		DRAWING TYPE		INSTALLATION	
FV		FV		SCALE		DRAWING TYPE		INSTALLATION	
FV		FV		SCALE		DRAWING TYPE		INSTALLATION	
FV		FV		SCALE		DRAWING TYPE		INSTALLATION	
FV		FV		SCALE		DRAWING TYPE		INSTALLATION	
FV		FV		SCALE		DRAWING TYPE		INSTALLATION	
FV		FV		SCALE		DRAWING TYPE		INSTALLATION	
FV		FV		SCALE		DRAWING TYPE		INSTALLATION	
FV		FV		SCALE		DRAWING TYPE		INSTALLATION	
FV		FV		SCALE		DRAWING TYPE		INSTALLATION	
FV		FV		SCALE		DRAWING TYPE		INSTALLATION	
FV		FV		SCALE		DRAWING TYPE		INSTALLATION	
FV		FV		SCALE		DRAWING TYPE		INSTALLATION	
FV		FV		SCALE		DRAWING TYPE		INSTALLATION	
FV		FV		SCALE		DRAWING TYPE		INSTALLATION	
FV		FV		SCALE		DRAWING TYPE		INSTALLATION	
FV		FV		SCALE		DRAWING TYPE		INSTALLATION	
FV		FV		SCALE		DRAWING TYPE		INSTALLATION	
FV		FV		SCALE		DRAWING TYPE		INSTALLATION	
FV		FV		SCALE		DRAWING TYPE		INSTALLATION	
FV		FV		SCALE		DRAWING TYPE		INSTALLATION	
FV		FV		SCALE		DRAWING TYPE		INSTALLATION	
FV		FV		SCALE		DRAWING TYPE		INSTALLATION	
FV		FV		SCALE		DRAWING TYPE		INSTALLATION	
FV		FV		SCALE		DRAWING TYPE		INSTALLATION	
FV		FV		SCALE		DRAWING TYPE		INSTALLATION	
FV		FV		SCALE		DRAWING TYPE		INSTALLATION	
FV		F							



INSTALLATION ABOVE HAWS 1501

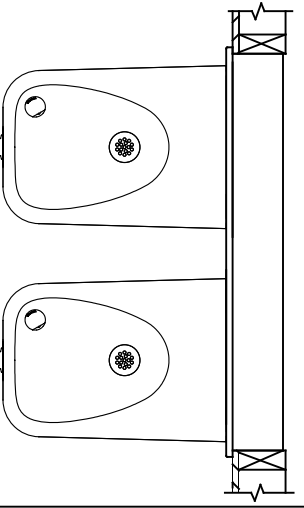


INSTALLATION ABOVE HAWS 1311
SEE SHEET 8 FOR INSTALLATION AT CHILD HEIGHT



* IF YOUR FOUNTAIN IS THIS STYLE USE THESE DIMENSIONS

1. SEE SEPARATE INSTALLATION DRAWINGS FOR MOUNTING PLATES AND BACK PANELS (SHOWN FOR REFERENCE - NOT SUPPLIED).
2. WHEN INSTALLING THIS UNIT, LOCAL, STATE OR FEDERAL CODES SHOULD BE ADHERED TO FOR INSTALLATION LOCATIONS, WASTE & SUPPLY REQUIREMENTS OTHER THAN SHOWN.



** EXISTING PUSH BUTTON ASSEMBLY SHOWN, CAN BE CONVERTED TO HANDS OFF STYLE, USING RETRO-FIT KIT MODEL 1RKHO.H OR 2RKHO.H DEPENDING ON CUSTOMER REQUIREMENTS.

3/8" O.D. SUPPLY TUBING AND 3/8" O.D. PUSH-IN TEE SUPPLIED. (CONNECT TO FOUNTAIN SUPPLY LINE)



HAWS
Since 1906

1455 KLEPPER LANE
SPARKS, NEVADA 89431
(775) 359-4712 FAX (775) 359-1424
E-MAIL: HAWS@HAWSCO.COM
WEBSITE: WWW.HAWSCO.COM

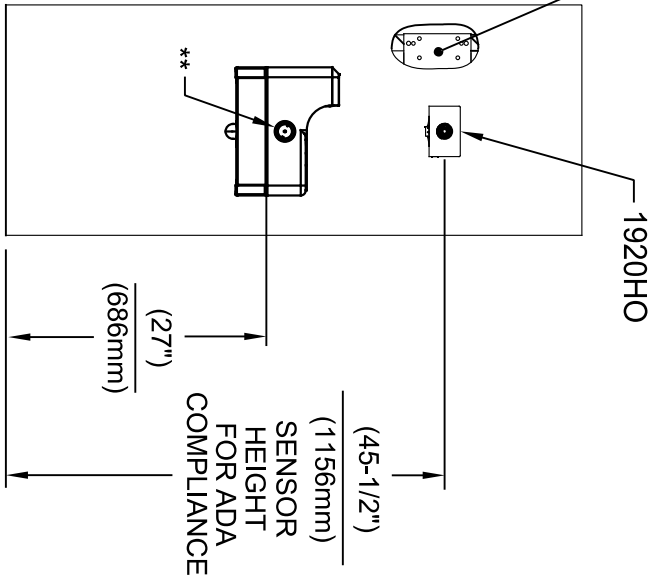
ECN NO. REVISED PERBY: 5574
DATE: 08/18/20
FV: KM

MODEL(S): 1920HO/1920HPSHO/1920WHO

PART NUMBER: 0510001063.D
REVISION: 8

APPROVED: DATE: SCALE: N/A DRAWING TYPE: INSTALLATION SIZE: A1 SHEET: 5 OF 8

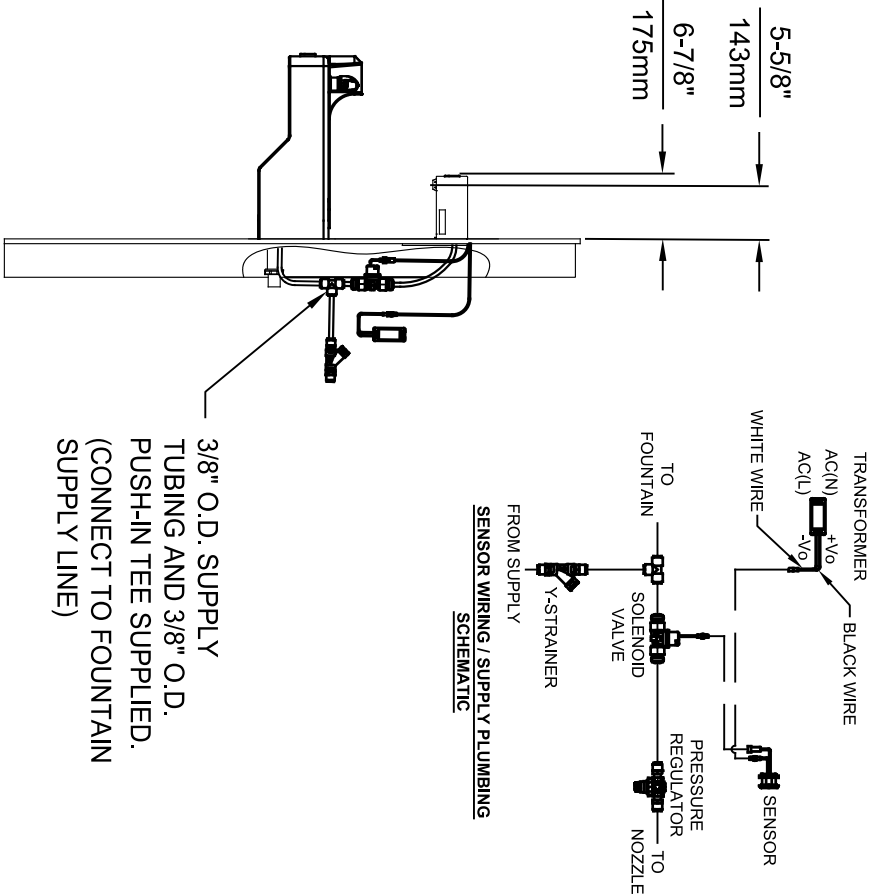
6700 MOUNTING PLATE
(BEHIND FINISH WALL)
- OR -
BOLT 1920HO ONTO EXISTING WALL
(MOUNTING HARDWARE ONLY SUPPLIED
WITH 6700 SERIES MOUNTING PLATES)



INSTALLATION ABOVE HAWS 1047

* IF YOUR FOUNTAIN IS THIS STYLE USE
THESE DIMENSIONS

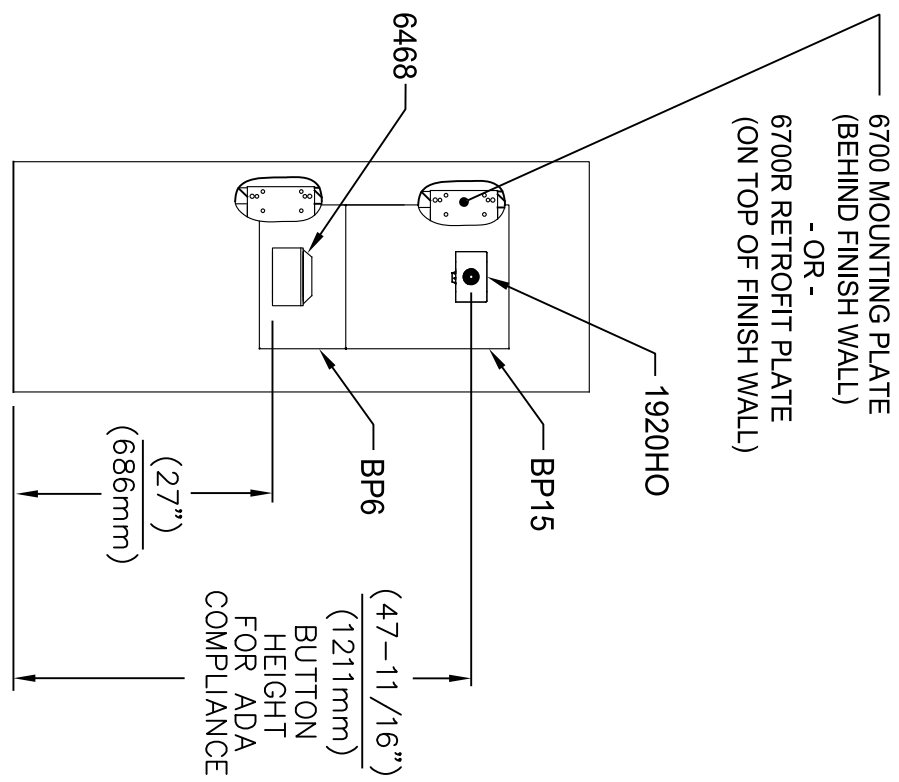
1. SEE SEPARATE INSTALLATION DRAWINGS
FOR MOUNTING PLATES AND BACK PANELS
(SHOWN FOR REFERENCE - NOT SUPPLIED).
2. WHEN INSTALLING THIS UNIT, LOCAL,
STATE OR FEDERAL CODES SHOULD
BE ADHERED TO FOR INSTALLATION
LOCATIONS, WASTE & SUPPLY
REQUIREMENTS OTHER THAN SHOWN.



** EXISTING PUSH BUTTON
ASSEMBLY SHOWN, CAN
BE CONVERTED TO HANDS
OFF STYLE, USING RETRO-
FIT KIT MODEL 1RKHO.H.

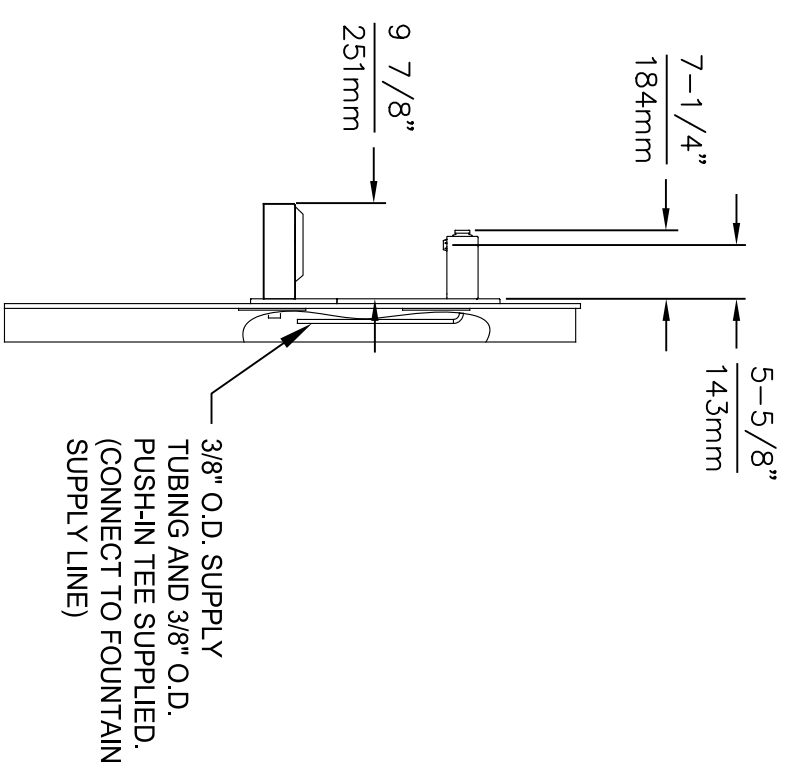



EGR NO. REVISED PERBY:		MODEL(S)		1455 KLEPPLE LANE	
5574	EGR 6136	FV		(775) 359-4712	FAX (775) 359-1424
DRAWN:	DATE:	CHKD:		E-MAIL: HAWS@HAWS.CO.COM	
FV	08/18/20	KAM		WEBSITE: WWW.HAWS.CO.COM	
APPROVED:	DATE:	SCALE:	N/A	DRAWING TYPE:	INSTALLATION
FV	11/04/24			SIZE:	A1 SHEET 6 OF 8
				PART NUMBER	
				0510001063.D	
				REVISION	
				8	



INSTALLATION ABOVE 6468

1. SEE SEPARATE INSTALLATION DRAWINGS FOR MOUNTING PLATES AND BACK PANELS (SHOWN FOR REFERENCE - NOT SUPPLIED).
2. WHEN INSTALLING THIS UNIT, LOCAL, STATE OR FEDERAL CODES SHOULD BE ADHERED TO FOR INSTALLATION LOCATIONS, WASTE & SUPPLY REQUIREMENTS OTHER THAN SHOWN.

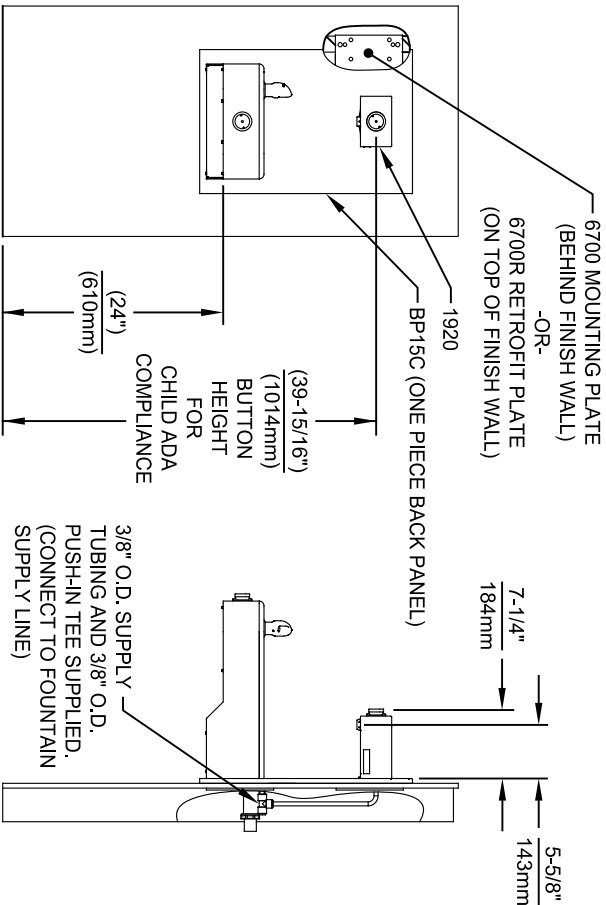




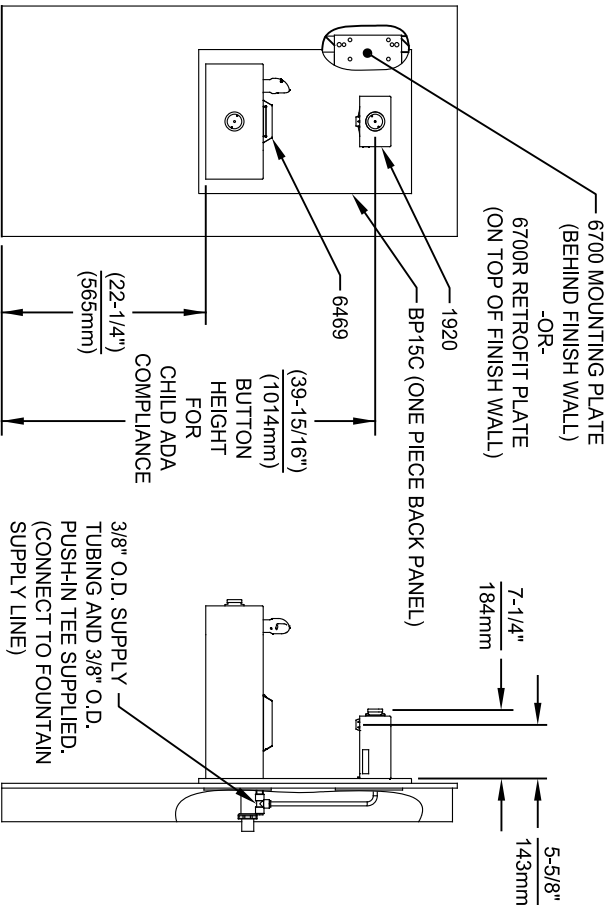
Haws®
Since 1906

1455 KLEPPLE LANE
SPARKS, NE/VADA 89431
(775) 359-4712 FAX (775) 359-1424
E-MAIL: HAWS@HAWS.CO.COM
WEBSITE: WWW.HAWS.CO.COM

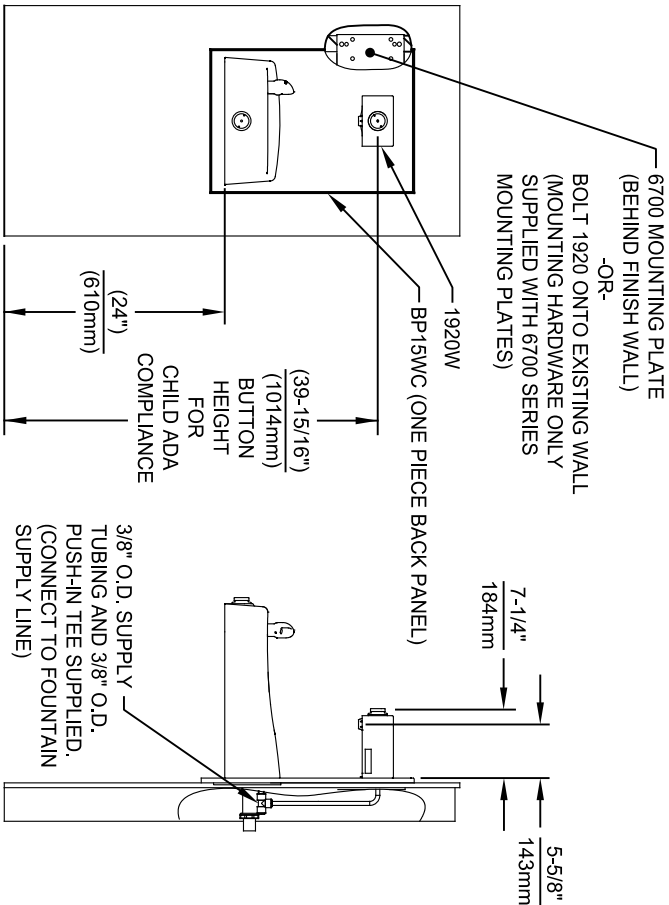
ECON NO. REVISED PERBY:		MODEL(S)	
5744	ECON 6136	1920HO/1920HPSHO/1920WHO	
DRAWN:	DATE:	CHKD:	
FV	10/04/21	KML	
APPROVED:	DATE:	SCALE:	DRAWING TYPE:
FV	11/04/24	N/A	INSTALLATION
SIZE: A1		SHEET 7 OF 8	
PART NUMBER		REVISION	
0510001063.D		8	



INSTALLATION ABOVE HAWS 1107L & H1107.8 SERIES



INSTALLATION ABOVE HAWS 1109, 1109.14 & H1109.8 SERIES
MUST USE PARALLEL APPROACH WITH THIS BOWL COMBINATION



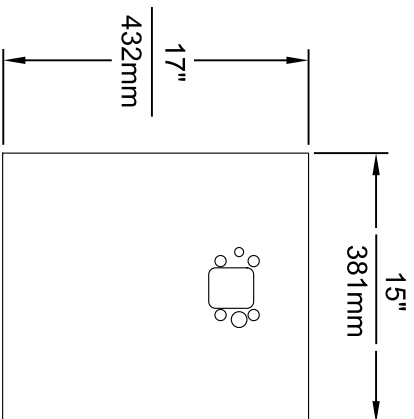
INSTALLATION ABOVE HAWS 1311

NOTES:

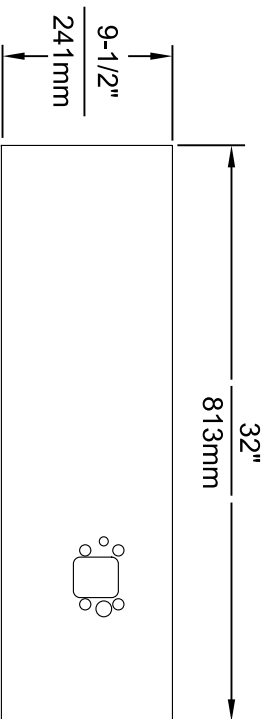
1. HEIGHT DIMENSIONS SHOWN ARE FOR CHILD ADA APPLICATIONS:
 - BOTTLE FILLER HEIGHT AT 40" MAX.
 - DRINKING FOUNTAIN BUBBLER HEIGHT AT 30" MAX.
 - (SEE SHEETS 3, 4 & 5 FOR ADULT ADA HEIGHT DIMENSIONS)
2. SEE SEPARATE INSTALLATION DRAWINGS FOR MOUNTING PLATES AND BACK PANELS (SHOWN FOR REFERENCE - NOT SUPPLIED).
3. WHEN INSTALLING THIS UNIT, LOCAL, STATE OR FEDERAL CODES SHOULD BE ADHERED TO FOR INSTALLATION LOCATIONS, WASTE & SUPPLY REQUIREMENTS OTHER THAN SHOWN.



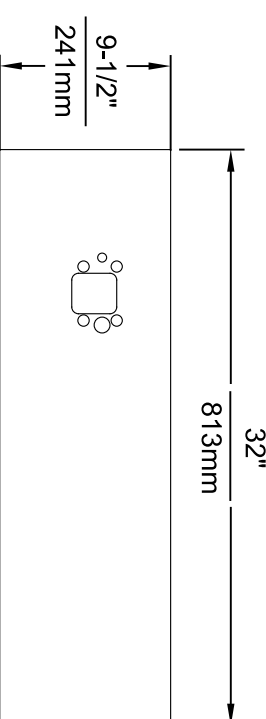
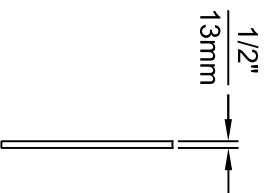
ECON. NO. REVISED PERBY:		MODEL(S)		1455 KLEPPER LANE	
5744	ECON. 6136	FV		SPARKS, NE/ADA 89431	
DRAWN:	DATE:	CHKD:		(775) 359-4712 FAX (775) 359-1424	
FV	02/26/24	KAM		E-MAIL: HAWS@HAWS.CO.COM	
APPROVED:	DATE:	SCALE:	N/A	WEBSITE: WWW.HAWS.CO.COM	
FV	11/04/24			PART NUMBER	
				1920HO/1920HPSHO/1920WHO	
				0510001063.D	
				REVISION	
				8	
				SIZE: A1 SHEET 8 OF 8	



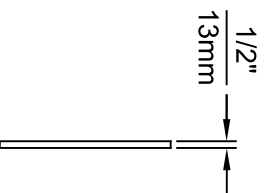
MODEL BP15 / BP15HPS / BP15W



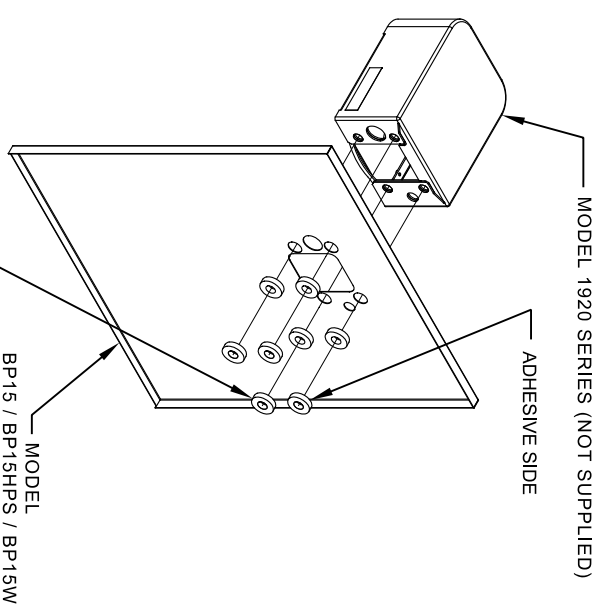
MODEL BP32 / BP32HPS / BP32W



MODEL BP32R / BP32RW



- NOTES:
1. WHEN INSTALLING THIS UNIT, LOCAL, STATE OR FEDERAL CODES SHOULD BE ADHERED TO.
 2. BOTTLE FILLER SHOWN FOR REFERENCE ONLY (NOT SUPPLIED).




8 SPACERS (2 PER MOUNTING BOLT IF THE MOUNTING PLATE (MODEL 6700 - NOT SUPPLIED) IS INSTALLED BEHIND THE FINISHED WALL. USE 1 SPACER PER BOLT FOR RETROFITS WHERE THE MOUNTING PLATE (MODEL 6700R - NOT SUPPLIED) IS INSTALLED IN FRONT OF THE FINISHED WALL)

INSTALLATION OVER SINGLE FOUNTAIN

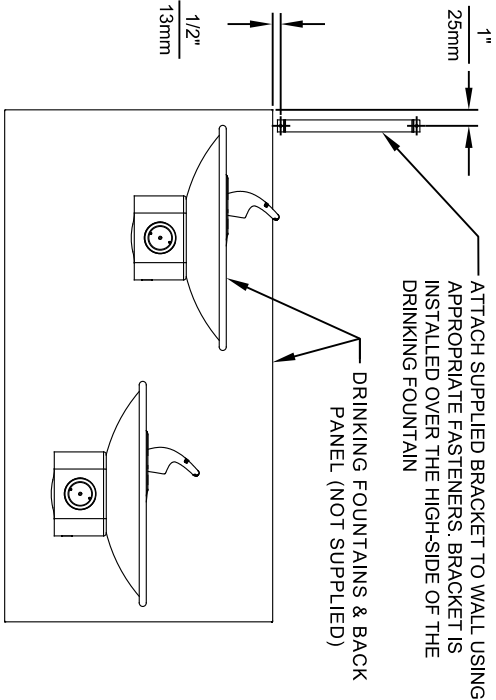
SHOWN FROM REAR

(SEE SHEET 3 OF 3 FOR INSTALLATION OF SPACERS
ON COMBINATION BOTTLE FILLER AND FOUNTAIN
BACK PANELS FOR CHILD HEIGHT APPLICATIONS -
MODELS BP15C & BP15WC)

										1455 KLEPPE LANE SPARKS, NEVADA 89431 (775) 359-4712 FAX (775) 359-1424 E-MAIL: HAWS@HAWSOCO.COM WEBSITE: WWW.HAWSOCO.COM														
ECON. NO. REVISED PERBY: FV										MODEL(S)														
DRAWN: 5061					ECON. 5972					DATE: 06/27/16					CHKD: JC									
APPROVED: FV					DATE: 04/19/24					SCALE: 1:1					DRAWING TYPE: INSTALLATION									
FOR BP15 SERIES & BP32 SERIES, BOTTLE FILLER										PART NUMBER														
0510000493										REVISION														
5										SIZE: A SHEET 1 OF 3														

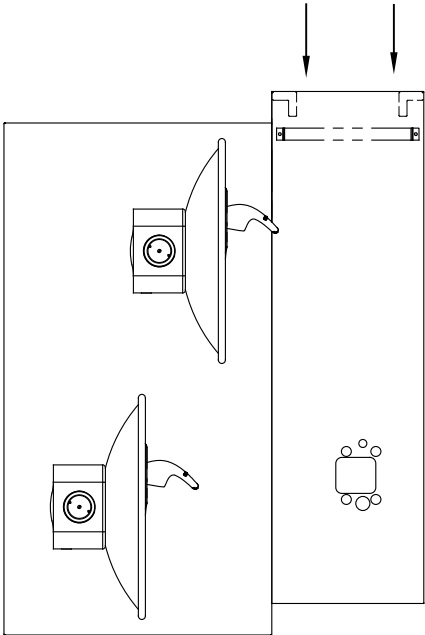
STEP 1

ATTACH SUPPLIED BRACKET TO WALL USING APPROPRIATE FASTENERS. BRACKET IS INSTALLED OVER THE HIGH-SIDE OF THE DRINKING FOUNTAIN



STEP 2

PLACE THE BACKPLATE AGAINST THE WALL AND SLIDE SIDEWAYS SO THE TABS CATCH UNDER THE BRACKET.

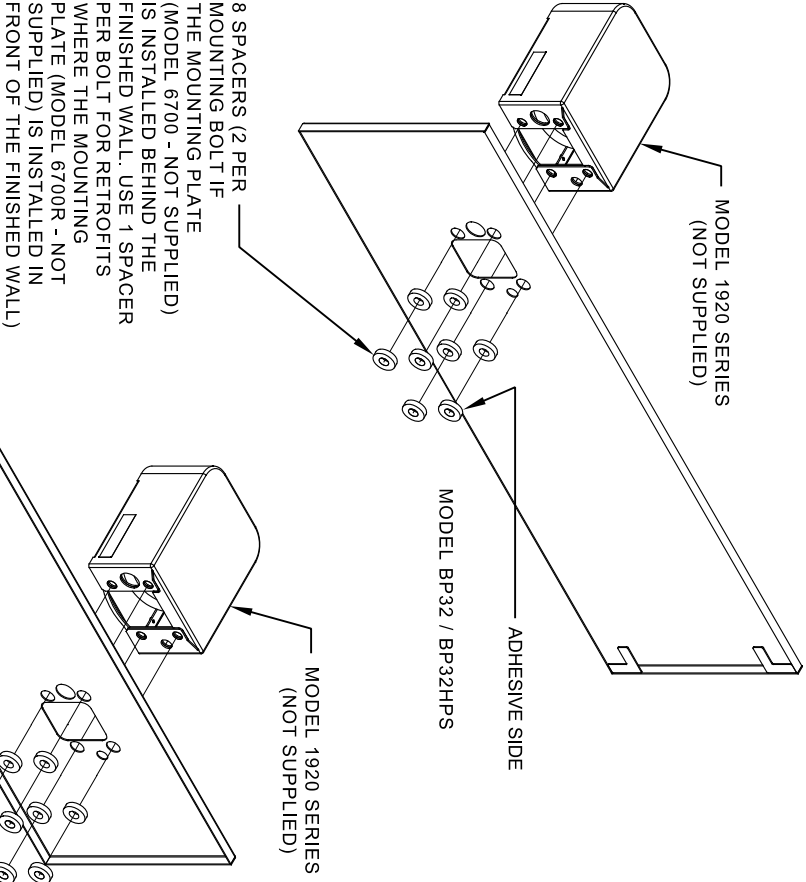


STEP 3

INSTALL THE BOTTLE FILLER (NOT SUPPLIED) PER THE INSTRUCTIONS SUPPLIED WITH THE UNIT.

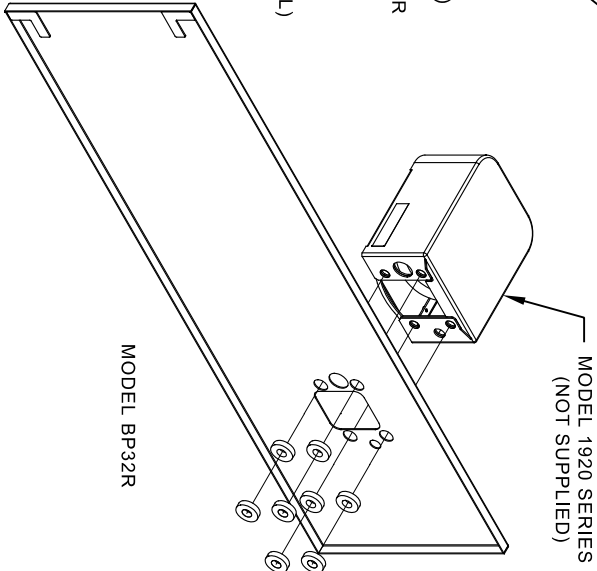
NOTES:


1. WHEN INSTALLING THIS UNIT, LOCAL, STATE OR FEDERAL CODES SHOULD BE ADHERED TO.
2. BOTTLE FILLERS, DRINKING FOUNTAINS & DRINKING FOUNTAIN BACK PANELS SHOWN FOR REFERENCE ONLY (NOT SUPPLIED).

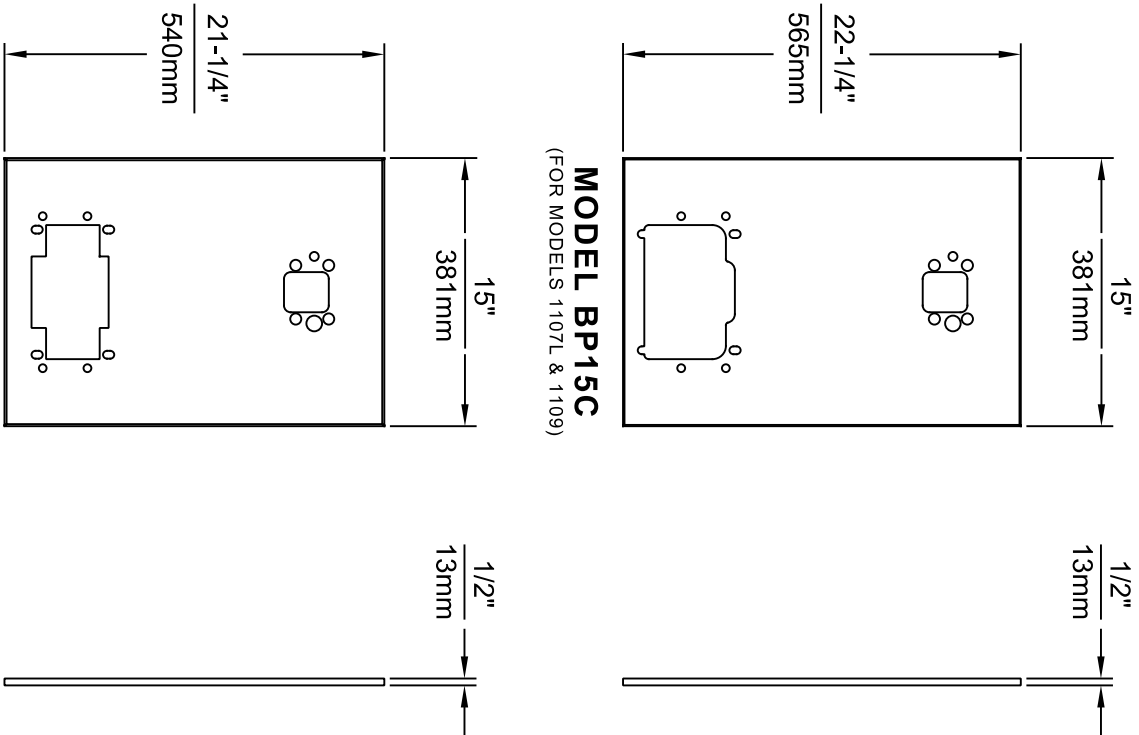


INSTALLATION OVER DOUBLE FOUNTAIN

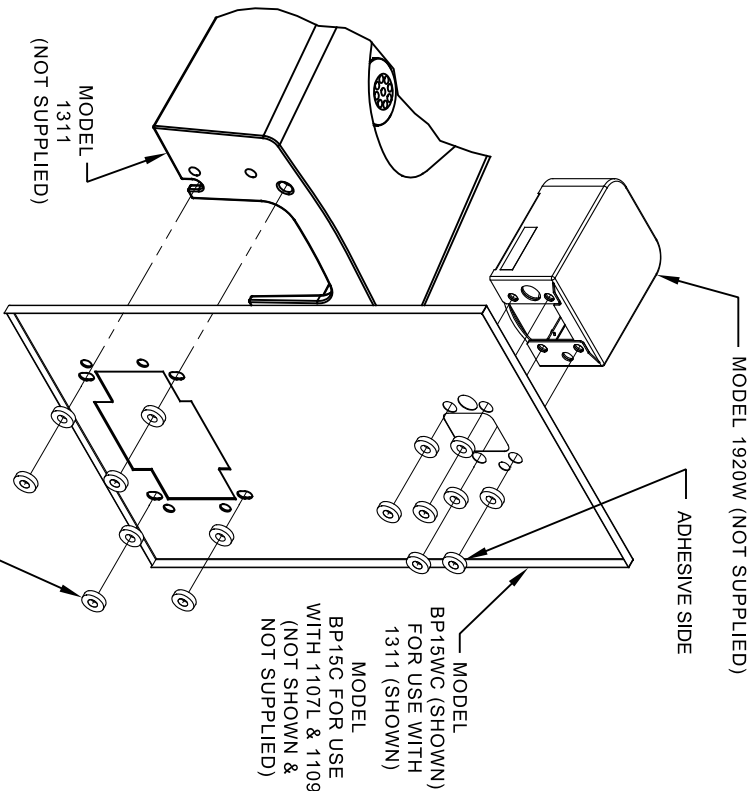
SHOWN FROM REAR



				1455 KLEPPLE LANE SPARKS, NEVADA 89431 (775) 359-4712 FAX (775) 359-1424 E-MAIL: HAWS@HAWS.CO.COM WEBSITE: WWW.HAWS.CO.COM			
ECON. REVISED PERBY: FV				MODEL(S)			
DRAWN: 5081 ECON. 5972 FV				DRAWING, BACK PANEL, SPACER INSTALLATION			
DATE: 02/02/17 JC				FOR BP15 SERIES & BP32 SERIES, BOTTLE FILLER			
APPROVED: FV				PART NUMBER			
DATE: 04/19/24				0510000493			
SCALE: 1:1				REVISION			
DRAWING TYPE: INSTALLATION				5			
SIZE: A1				SHEET 2 OF 3			



- NOTES:
1. WHEN INSTALLING THIS UNIT, LOCAL, STATE OR FEDERAL CODES SHOULD BE ADHERED TO.
 2. BOTTLE FILLER AND DRINKING FOUNTAIN SHOWN FOR REFERENCE ONLY (NOT SUPPLIED).



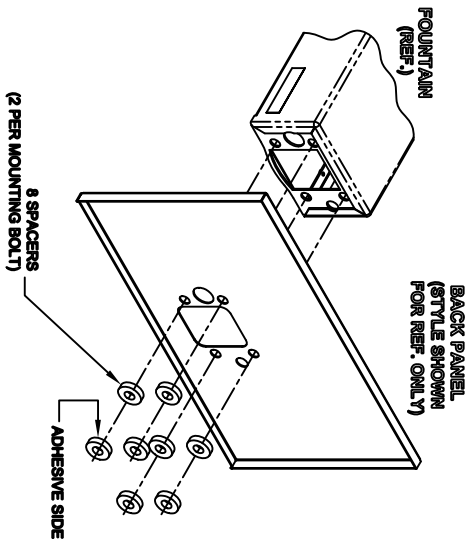
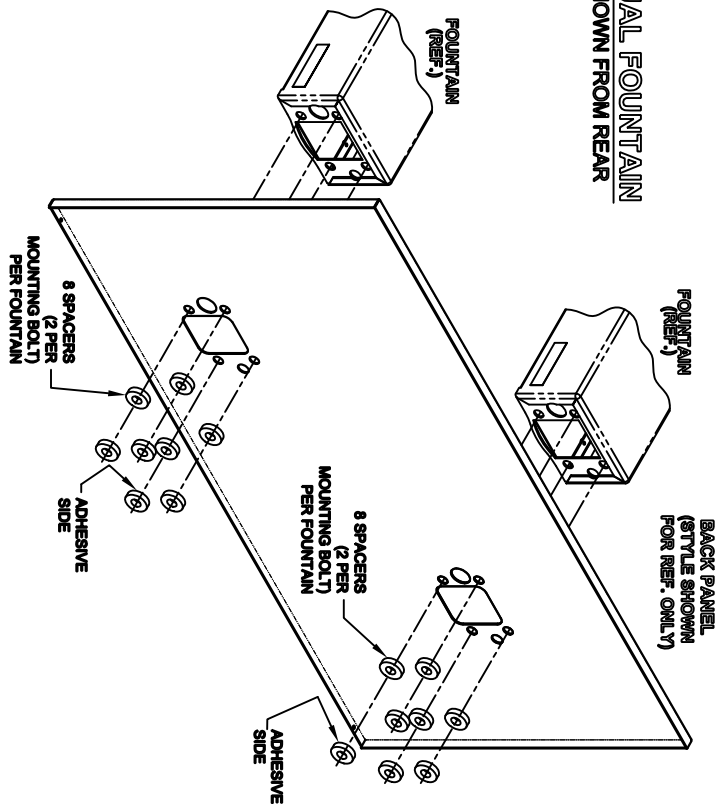
ONE PIECE INSTALLATION ON SINGLE FOUNTAIN

SHOWN FROM REAR

(MODEL BP15C & BP15WC ARE COMBINATION BOTTLE FILLER AND FOUNTAIN BACK PANELS USED FOR CHILD HEIGHT APPLICATIONS ONLY ON MODELS 1107L, 1109 & 1311 - BOTTLE FILLER & DRINKING FOUNTAIN NOT SUPPLIED)

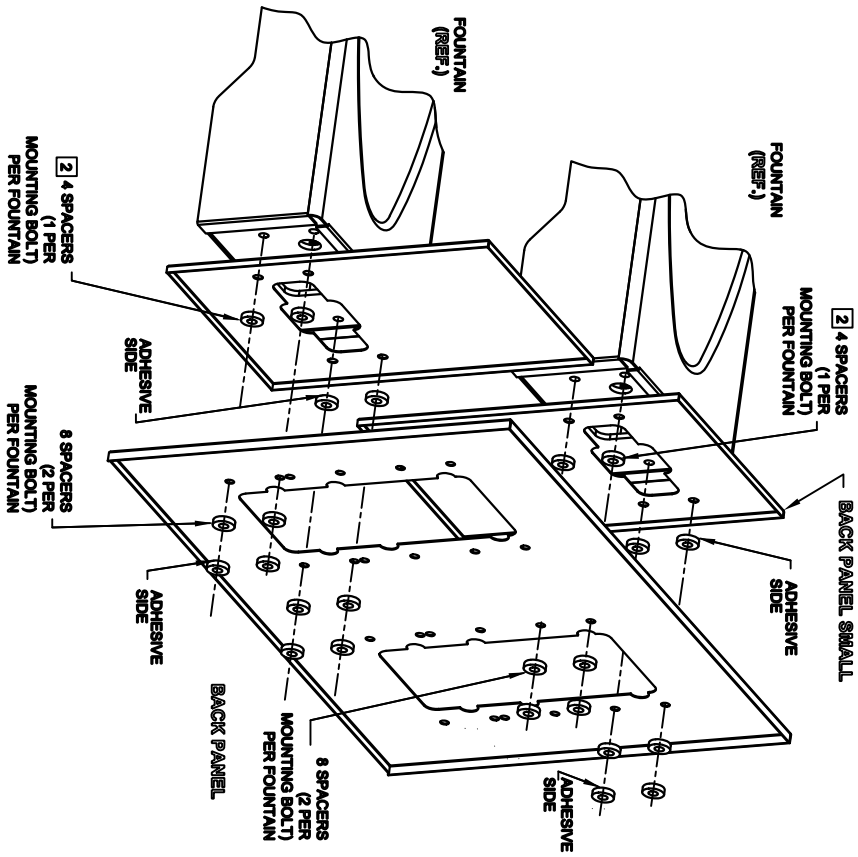
 Since 1906				1455 KLEPPER LANE SPARKS, NEVADA 89431 (775) 359-4712 FAX (775) 359-4242 E-MAIL: HAWS@HAWS.CO.COM WEBSITE: WWW.HAWS.CO.COM			
ECON. NO. / REVISED PER BY:				MODEL(S)			
9972		ECON. 9972		FV			
DRAWN:		DATE:		CHKD:			
FV		12/13/23		JC			
APPROVED:		DATE:					
FV		04/19/24					
SCALE: 1:1				DRAWING TYPE: INSTALLATION			
SIZE: A				SHEET 3 OF 3			
DRAWING, BACK PANEL, SPACER INSTALLATION				PART NUMBER			
FOR BP15 SERIES & BP32 SERIES, BOTTLE FILLER				0510000493			
REVISION				5			

DUAL FOUNTAIN SHOWN FROM REAR



NOTES:

- 1 ON ALL BACK PANEL MODELS, SPACERS ARE NOT USED WHEN A MOUNTING FRAME IS USED EXCEPT AS SPECIFIED IN NOTE 2
- 2 INDICATED SPACERS ARE USED WITH MOUNTING FRAME (DUAL ADJUSTABLE)



DUAL FOUNTAIN ADJUSTABLE SHOWN FROM REAR




1465 KLEPPE LANE
SPARKS, NEVADA 89431
(775) 366-4712 FAX (775) 366-1424
E-MAIL: HAWS@HAWS.CO.COM
WEBSITE: WWW.HAWS.CO.COM

ECN NO. REVISED PER BY:	MODEL(S)	BACK PANEL	PART NUMBER
ECN: 4895	HA	SPACER INSTRUCTIONS	0002082219
DATE: 10/20/11	CHKD:		DRAWING NO. 08292C00
APPROVER: DATE:	SCALE: 1:10	DRAWING TYPE: INSTALLATION	REV: 5
	SIZE: A	SHEET: 1 OF 1	

6700 INDEX

INSTALLATION WITH:	TYPICAL USES	SEE SHEET ...
GENERAL INSTALLATION	IMPORTANT INFORMATION FOR ALL INSTALLATIONS	3 OF 6
1001 BOWLS	HAWS SERIES 1001X, 1001.8X	3 OF 6
1107 BOWLS	HAWS SERIES 1107X, 1107.8X	3 OF 6
1109 BOWLS	HAWS SERIES 1109X, 1109.8X	3 OF 6
1047 BOWLS	HAWS SERIES 1047	4 OF 6
1011 BOWLS	HAWS SERIES 1011X, 1011.8X	4 OF 6
1119 BOWLS	HAWS SERIES 1119X, 1119.8X	4 OF 6
1117 BOWLS	HAWS SERIES 1117X, 1117.8X	5 OF 6
1311 BOWLS	HAWS SERIES 1311	5 OF 6
1501 BOWLS	HAWS SERIES 1501	5 OF 6
CHILD HEIGHT	HAWS 1107PCH, 1109PCH, 1311PCH	6 OF 6



Haws

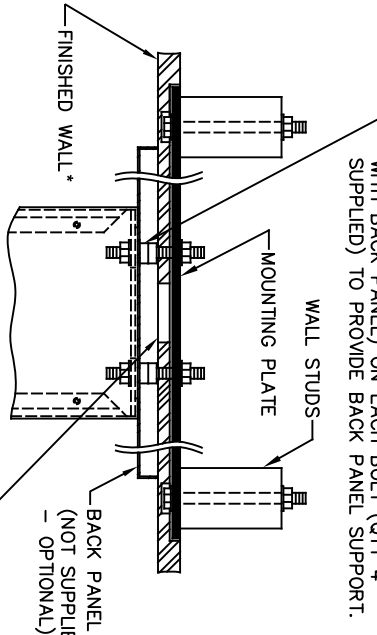
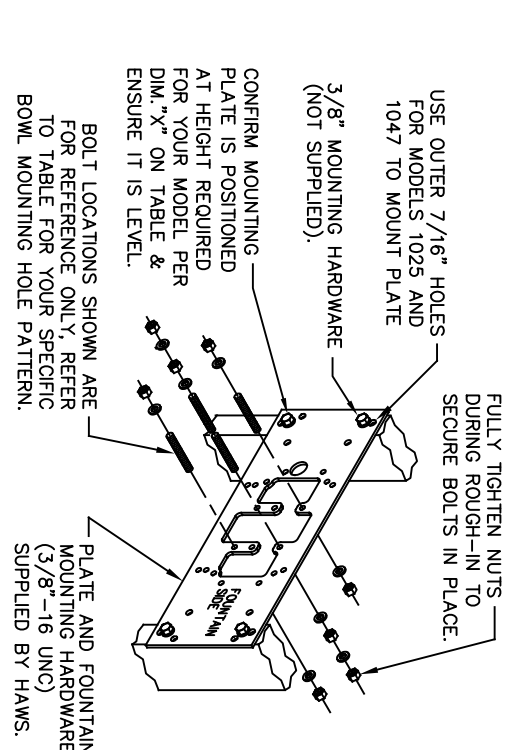
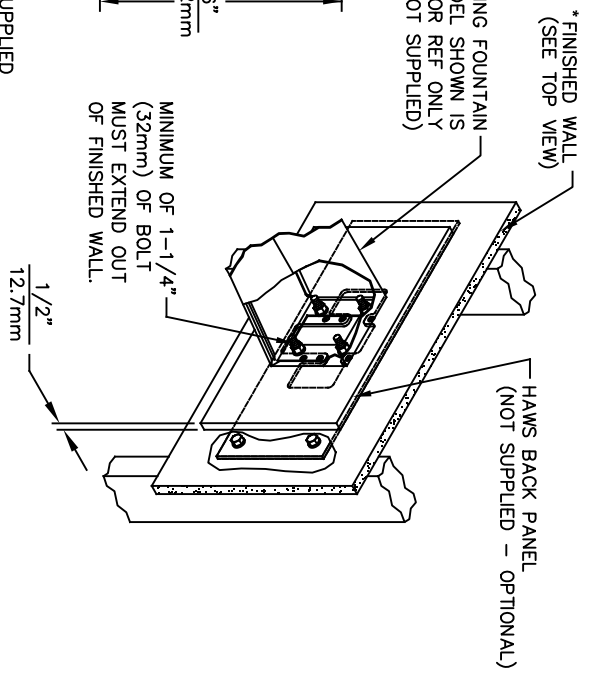
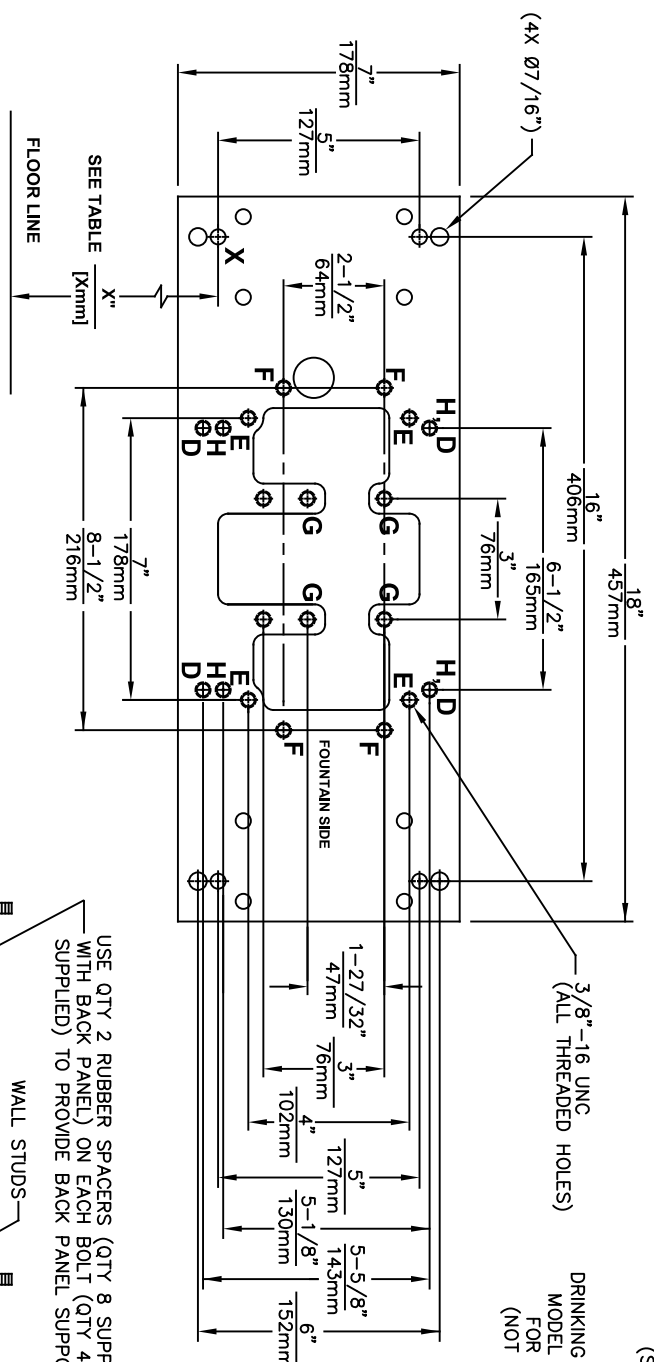
Since 1906

1455 KLEPPE LANE
SPARKS, NEVADA 89431
(775) 359-4712 FAX (775) 359-7424
E-MAIL: HAWS@HAWSCO.COM
WEBSITE: WWW.HAWSCO.COM

ECN NO. REVISED PER BY: ECN: 6148 JG
DRAWN: JG DATE: 10/03/24 CHK'D: JG
APPROVED: FV DATE: 02/11/25

MODEL(S)
67/00

PART NUMBER
0002080016
REVISION
26




DRINKING FOUNTAIN (ONLY) AT 27" ADULT HEIGHT (SEE SPECIFIC MODEL O&M'S FOR OTHER HEIGHTS)			
MODEL	USE BOWL MTG. HOLE PATTERN	USE "X" DIM. BELOW TO POSITION MOUNTING PLATE HOLE "X"	
1001	"G"	25-3/8" [645mm]	
1025	"D"	28-1/8" [714mm]	
1047	"E"	24-3/8" [619mm]	
1105	"H"	34-5/16" [872mm]	
1107	"F"	26-3/16" [665mm]	
1109	"H"	27-5/16" [694mm]	
1109.14	"H"	27-5/16" [694mm]	
1109FR	"H"	27-5/16" [694mm]	
1311	"E"	26-3/4" [679mm]	
WASTE DRIP TRAY (ONLY) AT 27" ADULT HEIGHT			
6468	"G"	25-3/8" [645mm]	
1922	"G"	25-3/8" [645mm]	

6700 MOUNTING PLATE
FOR USE WITH
DRINKING FOUNTAINS
AND WASTE DRIP TRAYS
AT 27" ADULT HEIGHT
(SEE SHEETS 2 - 5 FOR USE WITH
BOTTLE FILLER 1920/1920HO SERIES
AND CHILD HEIGHT APPLICATIONS)

****FINISH WALL OVER MOUNTING PLATE AND BEHIND BACK PANEL. MAKE SURE THAT FINISHED WALL EXTENDS WITHIN THE BRACKET/BOWL MOUNTING HOLES (TO PROVIDE SURFACE AREA FOR RUBBER SPACERS TO CONTACT).**

CAUTION

REGARDING CONCRETE/MASONRY WALL MOUNTING: DO NOT SECURE MOUNTING PLATE TO SAME SIDE OF WALL AS FOUNTAIN. AVOID COMPROMISING INTEGRITY OF WALL WHEN ANCHORING FOUNTAIN. IT IS RECOMMENDED THAT INSTALLER CALL TECHNICAL SUPPORT IF THERE ARE ANY QUESTIONS AS TO HOW TO OBTAIN A PROPER ANCHOR IN CONCRETE/MASONRY WALLS. 1-800-766-5612



Haws®
Since 1906

ECN NO. REVISED PERBY: 6700

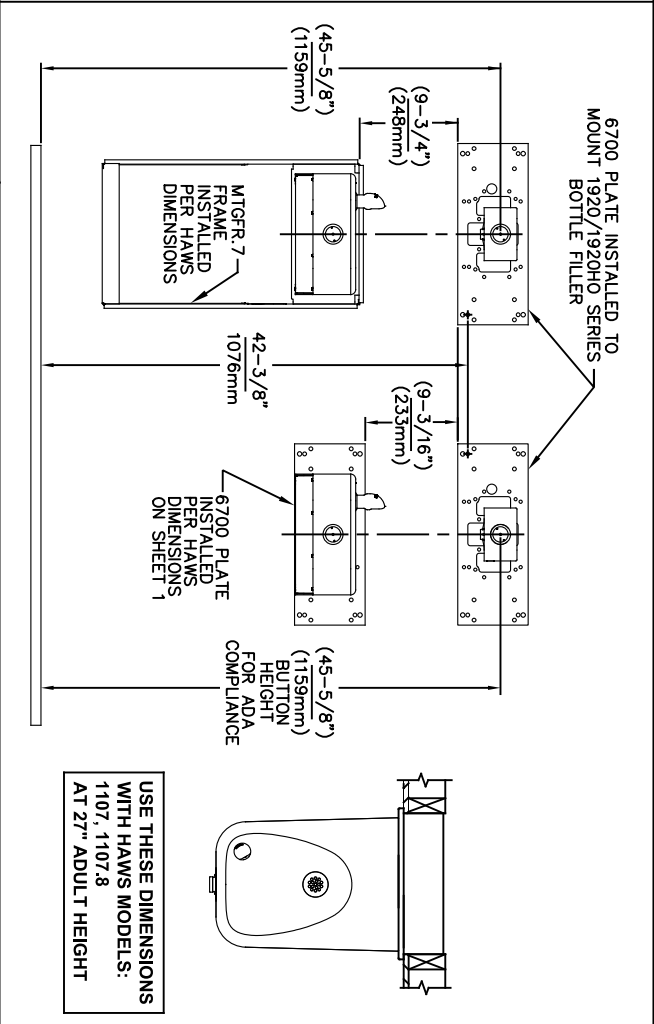
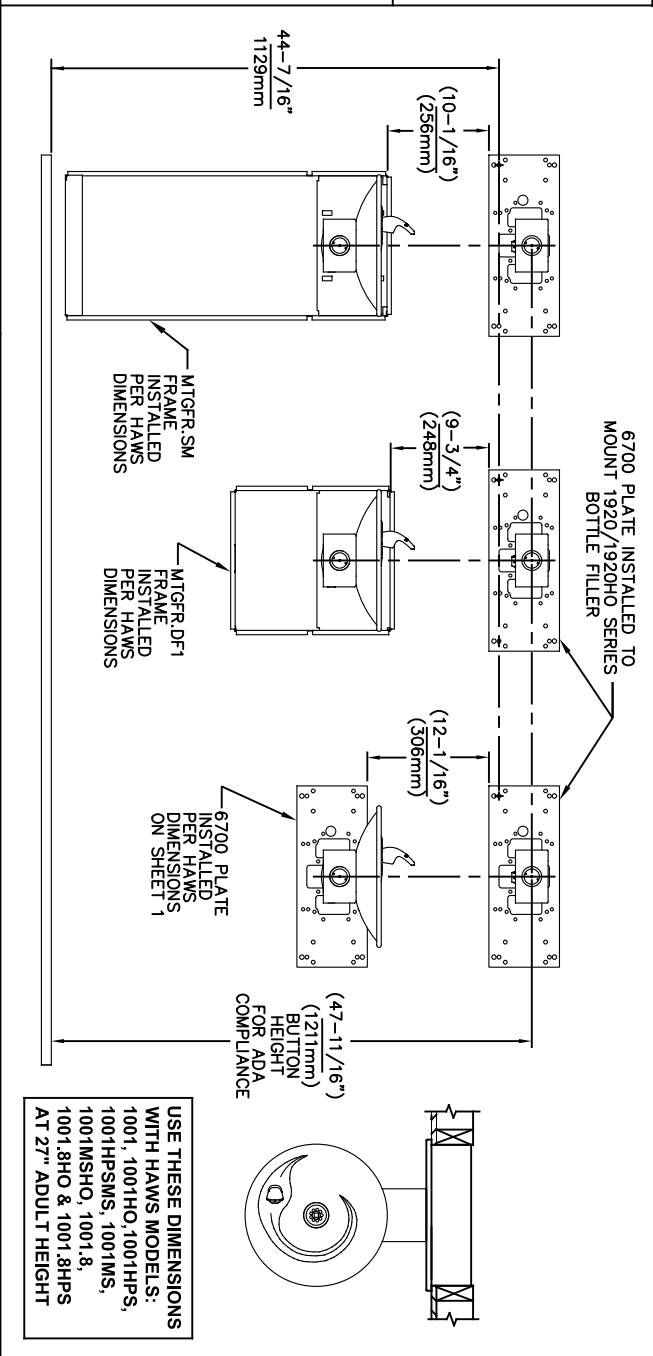
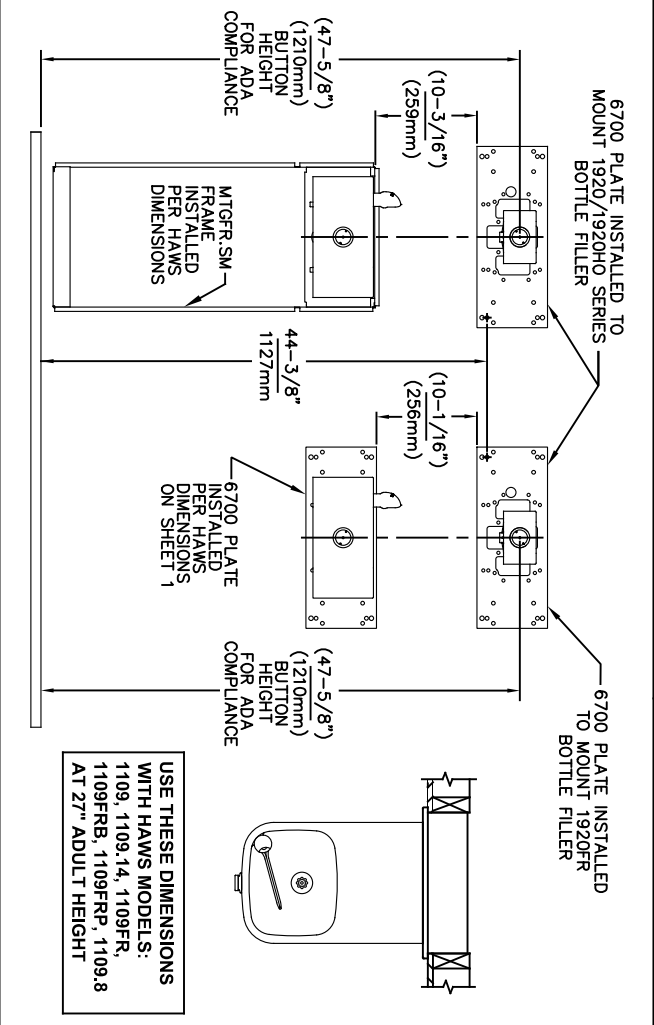
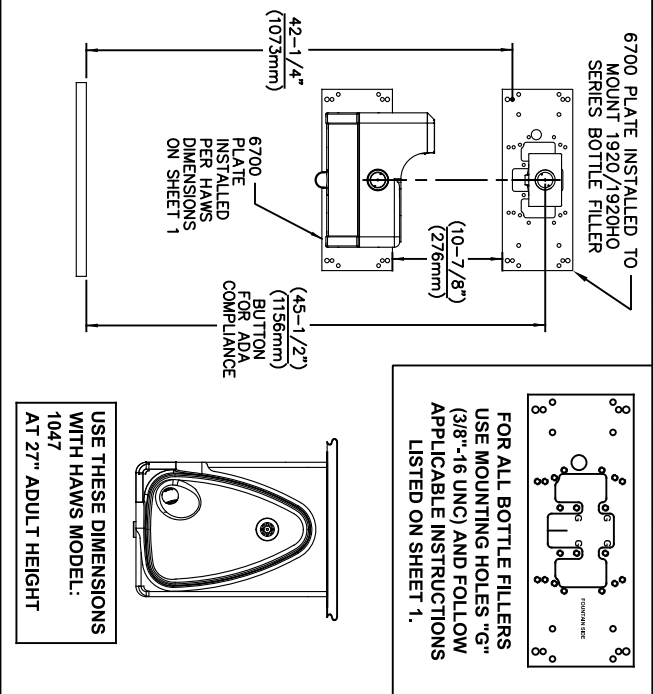
DRAWN: JG	DATE: 02/11/25
CAL: JG	DATE: 02/11/25

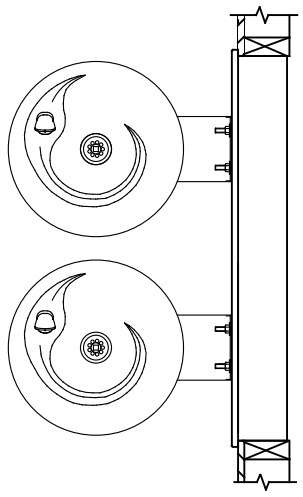
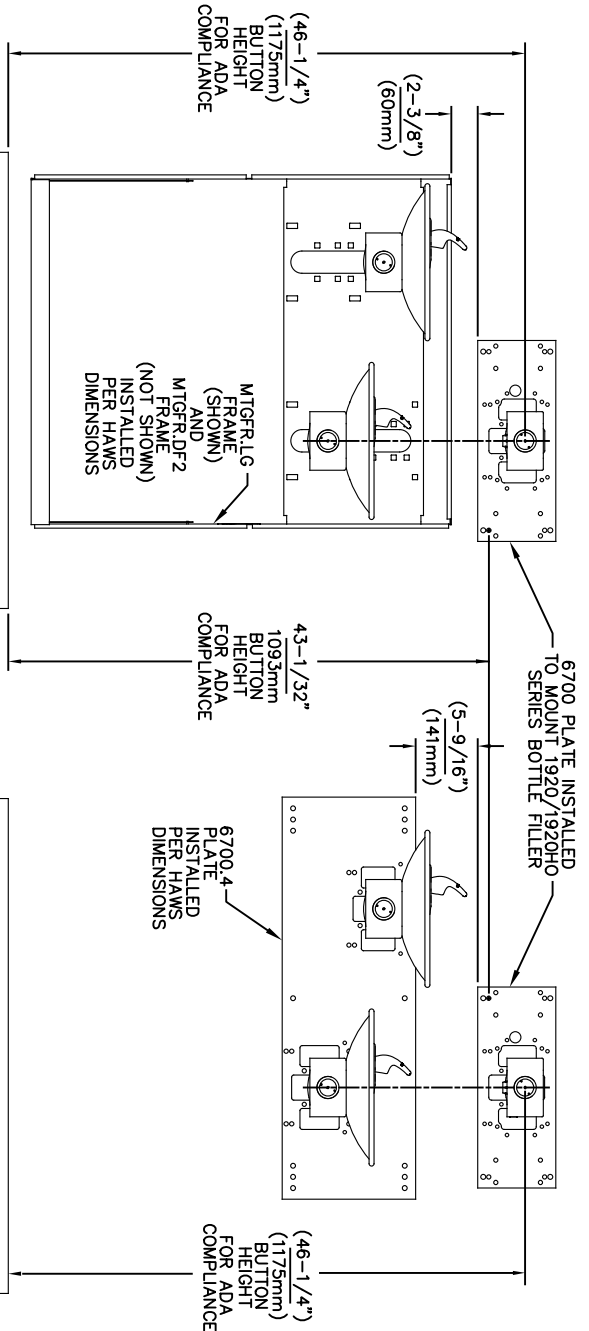
APPROVED: FV

1455 KLEPPE LANE
SPARKS, NEVADA 89431
(775) 359-4712 FAX (775) 359-7424
E-MAIL: HAWS@HAWS.CO.COM
WEBSITE: WWW.HAWS.CO.COM

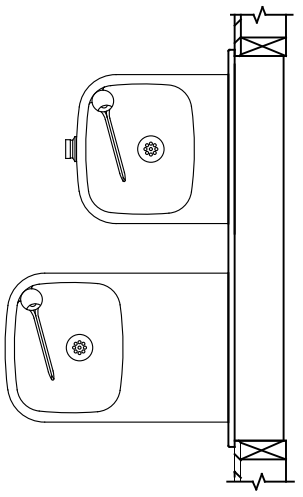
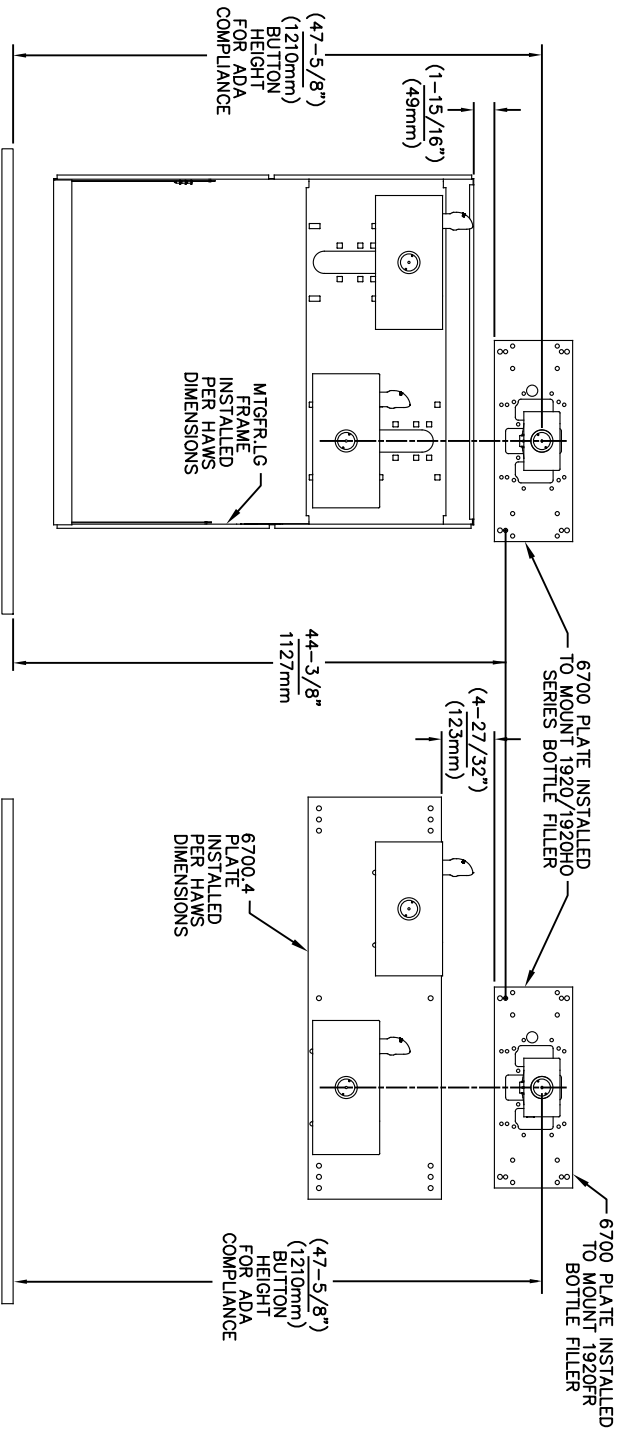
PART NUMBER: 0002080016

REVISION: 26






USE THESE MOUNTING DIMENSIONS IF INSTALLING OVER HAWS FOUNTAIN
MODEL: 1011, 1011HO, 1011HO2, 1011HPS, 1011HPSHO, 1011HPSHO2, 1011HPSMS, 1011HMS, 1011MSHO, 1011MSHO2, 1011.8, 1011.8HO, 1011.8HO2 & 1011.8HPSM AT 27" ADULT HEIGHT
INSTALL THE 6700 ABOVE THE FOUNTAIN MOUNTING PLATE OR FRAME AT THE DIMENSION SHOWN FOR CORRECT BACKPANEL SPACING
BACK PANELS FOR BOTTLE FILLERS (NOT SUPPLIED - OPTIONAL) ARE NOT SHOWN FOR CLARITY.

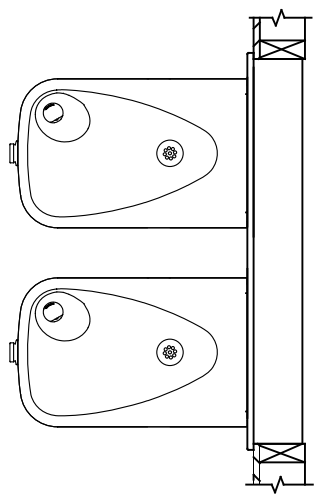
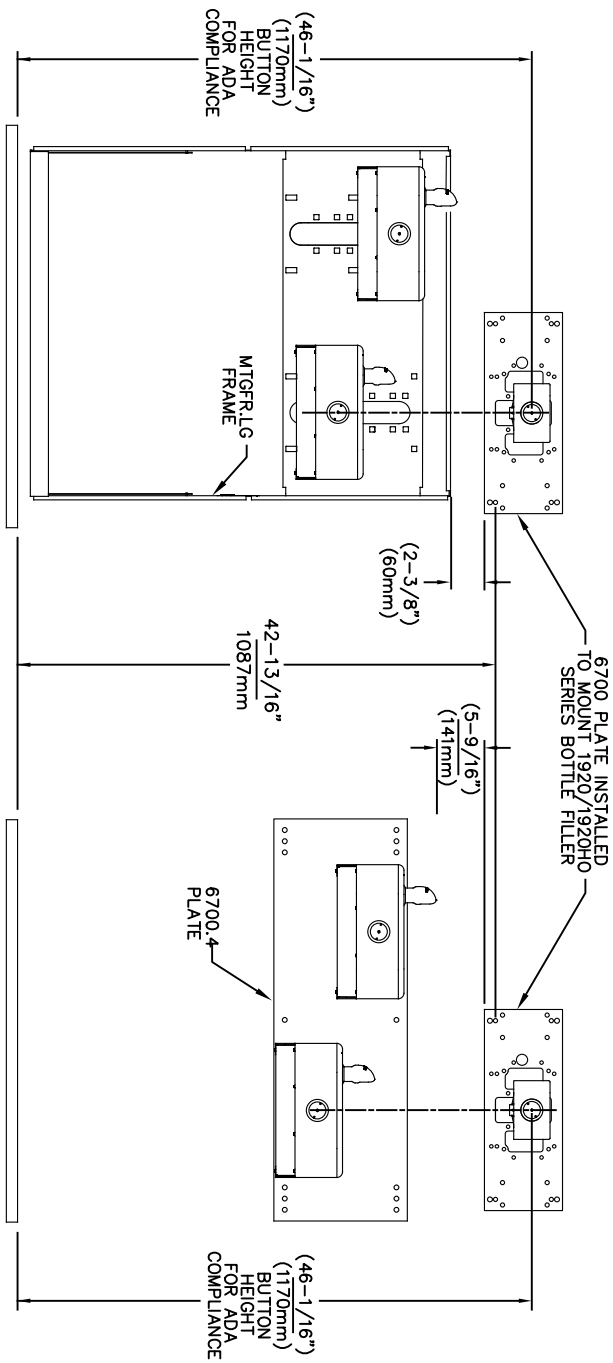


USE THESE MOUNTING DIMENSIONS IF INSTALLING OVER HAWS FOUNTAIN
MODEL: 1119, 1119.14, 1119.14HO, 1119.14HO2, 1119FR, 1119FRB, 1119FRP, 1119HO, 1119HO2 & 1119.8 AT 27" ADULT HEIGHT
INSTALL THE 6700 ABOVE THE FOUNTAIN MOUNTING PLATE OR FRAME AT THE DIMENSION SHOWN FOR CORRECT BACKPANEL SPACING
BACK PANELS FOR BOTTLE FILLERS (NOT SUPPLIED - OPTIONAL) ARE NOT SHOWN FOR CLARITY.

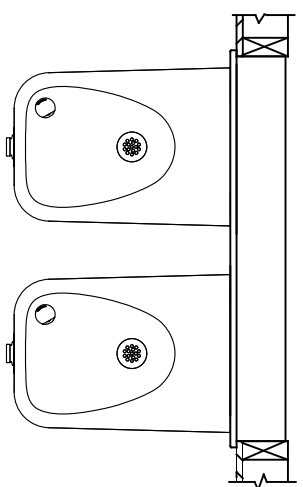
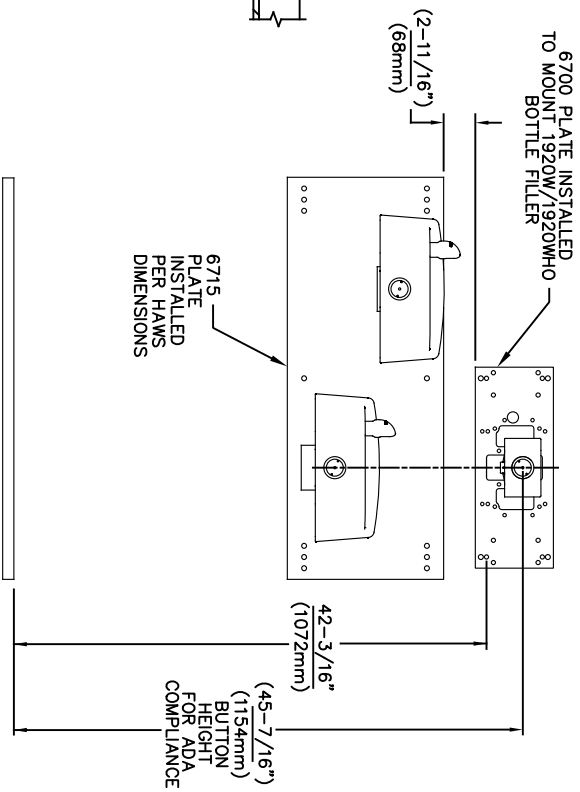
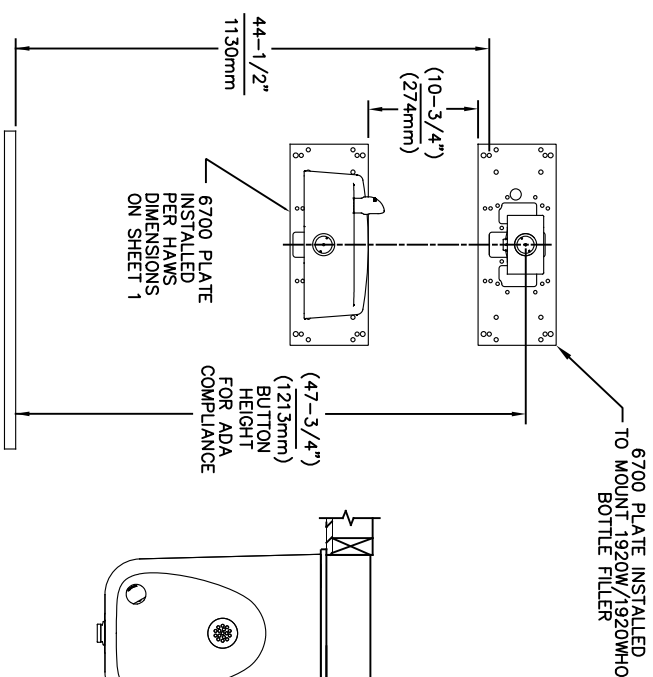
- NOTES:
1. WHEN INSTALLING THIS UNIT, LOCAL, STATE OR FEDERAL CODES SHOULD BE ADHERED TO.
 2. BACK PANELS (OPTIONAL) NOT SHOWN FOR CLARITY.

6700 MOUNTING PLATE
FOR USE WITH BOTTLE FILLER
(SEE SHEET 1 FOR USE WITH
DRINKING FOUNTAINS)

		1456 KLEPPE LANE SPARKS, NEVADA 89431 (775) 359-4712 FAX (775) 359-7424 E-MAIL: HAWS@HAWS.CO.COM WEBSITE: WWW.HAWS.CO.COM	
ECN NO. REVISED PERBY:	MODEL(S)	6700	
5550 ECN 6148 JG	DATE: 09/14/20 JG	PART NUMBER 0002080016	
DRAWN: FV	DATE: 02/11/25	REVISION: 26	
APPROVED: FV	SCALE: 1:13	DRAWING TYPE: INSTALLATION	
SIZE: A		SHEET 4 OF 6	




USE THESE MOUNTING DIMENSIONS IF INSTALLING OVER HAWS FOUNTAIN MODEL: 1117, 1117.8 AT 27" ADULT HEIGHT
INSTALL THE 6700 ABOVE THE FOUNTAIN MOUNTING PLATE OR FRAME AT THE DIMENSION SHOWN FOR CORRECT BACKPANEL SPACING
BACK PANELS FOR BOTTLE FILLERS (NOT SUPPLIED - OPTIONAL) ARE NOT SHOWN FOR CLARITY.



USE THESE MOUNTING DIMENSIONS IF INSTALLING OVER HAWS FOUNTAIN MODEL: 1311, 1501 AT 27" ADULT HEIGHT
INSTALL THE 6700 ABOVE THE FOUNTAIN MOUNTING PLATE AT THE DIMENSION SHOWN FOR CORRECT BACKPANEL SPACING (IF APPLICABLE).
BACK PANEL FOR BOTTLE FILLER (NOT SUPPLIED - OPTIONAL) IS NOT SHOWN FOR CLARITY.

- NOTES:
1. WHEN INSTALLING THIS UNIT, LOCAL, STATE OR FEDERAL CODES SHOULD BE ADHERED TO.
 2. BACK PANELS (OPTIONAL) NOT SHOWN FOR CLARITY.

6700 MOUNTING PLATE
FOR USE WITH BOTTLE FILLER
(SEE SHEET 1 FOR USE WITH
DRINKING FOUNTAINS)



Since 1906

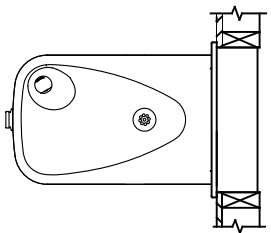
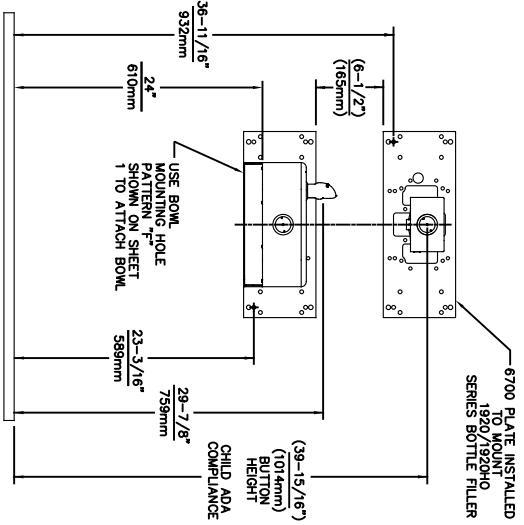
1456 KLEPPE LANE
SPARKS, NEVADA 89431
(775) 359-4712 FAX (775) 359-7424
E-MAIL: HAWS@HAWS.CO.COM
WEBSITE: WWW.HAWS.CO.COM

ECN NO.	REVISED PERBY:	MODEL(S)
5550	ECN: 6148 JG	
DRAWN:	DATE:	CHKD:
FV	05/14/20	JG
APPROVED:	DATE:	
FV	02/11/25	
SCALE:	1:13	DRAWING TYPE:
INSTALLATION		
SHEET	5	OF 6

6700

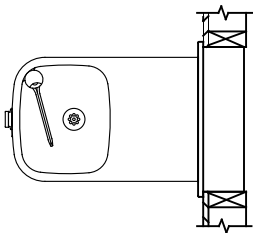
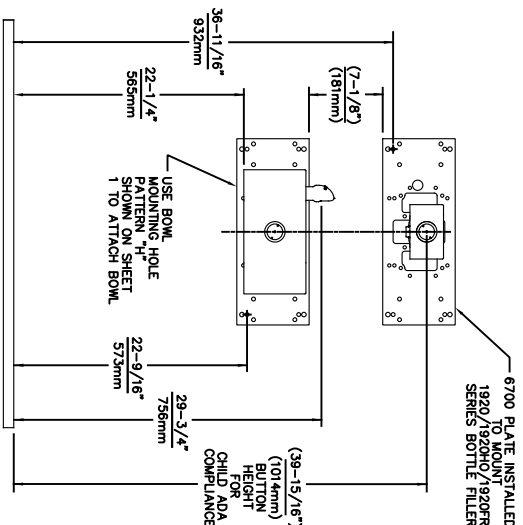
PART NUMBER
0002080016

REVISION
26



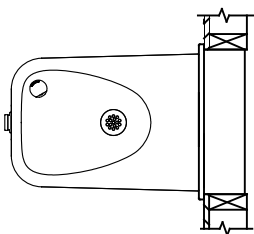
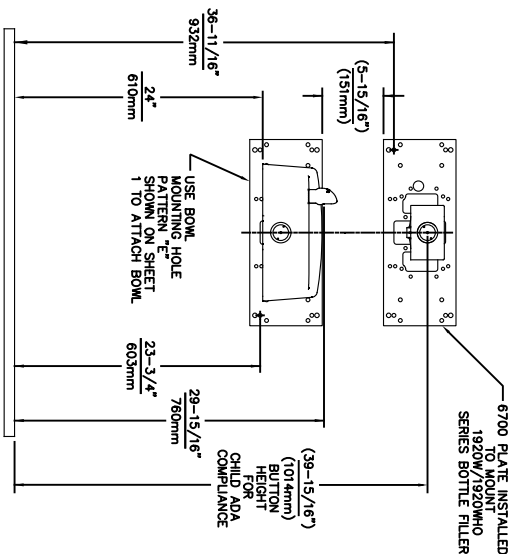
USE THESE DIMENSIONS WITH HAWS
MODEL:
1107PCH
AT 24" CHILD HEIGHT *

6700 MOUNTING PLATE
FOR USE WITH BOTTLE FILLER AT
40" MAX. AND
DRINKING FOUNTAIN
AT 24" AND BUBBLER HEIGHT AT 30"
MAX. FOR CHILD ADA HEIGHT
(SEE SHEETS 1 & 2 FOR USE WITH
DRINKING FOUNTAIN AT 27" ADULT
HEIGHT DIMENSIONS)



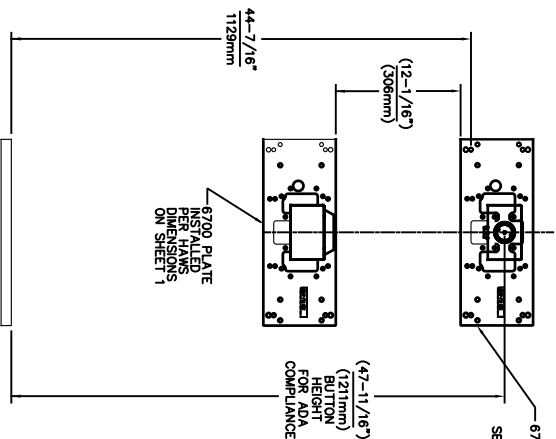
USE THESE DIMENSIONS WITH HAWS
MODELS:
1109, 1109.14, 1109FR, 1109FRB, 1109FRP
AT 22-1/4" HEIGHT TO ACHIEVE 30" MAX.
CHILD ADA BUBBLER HEIGHT * NOTE:
MUST USE PARALLEL APPROACH WITH
THIS BOWL COMBINATION.

- NOTES:
1. WHEN INSTALLING THIS UNIT, LOCAL, STATE OR FEDERAL CODES SHOULD BE ADHERED TO.
 2. ONE PIECE BACK PANELS BP15C (FOR USE WITH MODELS 1107L, 1109 SERIES & BOTTLE FILLER) & BP15WC (FOR USE WITH MODEL 1311 & BOTTLE FILLER) ARE USED FOR CHILD HEIGHT APPLICATIONS AND ARE OPTIONAL (NOT SHOWN FOR CLARITY).



USE THESE DIMENSIONS WITH HAWS
MODEL:
1107PCH
AT 24" CHILD HEIGHT *


6700 MOUNTING PLATE
FOR USE WITH BOTTLE FILLER AT
40" MAX. AND
DRINKING FOUNTAIN
AT 24" AND BUBBLER HEIGHT AT 30"
MAX. FOR CHILD ADA HEIGHT
(SEE SHEETS 1 & 4 FOR USE WITH
DRINKING FOUNTAIN AT 27" ADULT
HEIGHT DIMENSIONS)



USE THESE MOUNTING DIMENSIONS IF
INSTALLING OVER HAWS WASTE DRIP
TRAY. MODEL: 6468 (SHOWN), 1922
(MODEL 1922 INCLUDES 1920 BOTTLE
FILLER, 1920 BOTTLE FILLER, 1920
BP15, 1920 BACK PANELS (NOT SHOWN),
AT 27" ADULT HEIGHT

INSTALL THE 6700 ABOVE THE
DRAIN TRAY MOUNTING PLATE AT
THE DIMENSION SHOWN FOR CORRECT
BACK PANEL SPACING (IF APPLICABLE).
BACK PANEL FOR BOTTLE FILLER
(NOT SUPPLIED - OPTIONAL) IS NOT
SHOWN FOR CLARITY.

6700 MOUNTING PLATE
FOR USE WITH BOTTLE FILLER
(SEE SHEET 1 FOR USE WITH
DRINKING FOUNTAINS
AND WASTE DRIP TRAY)



Since 1906

1456 KLEPPE LANE
SPARKS, NEVADA 89431
(775) 359-4712 FAX (775) 359-7424
E-MAIL: HAWS@HAWS.CO.COM
WEBSITE: WWW.HAWS.CO.COM

ECN NO. REVISED PERBY: MODEL(S)
5893 1 ECN: 6148 JG
DRAWN: DATE: CHKD:
FV 07/26/23 JG
APPROVED: DATE: SCALE: 1:13 DRAWING TYPE: INSTALLATION SHEET 6 OF 6

6700

PART NUMBER
0002080016
REVISION
26