

FEATURES & BENEFITS

CONSTRUCTION

Rugged ADA accessible 18 gauge Type 304 Stainless Steel swirl design bowl, 14 gauge Type 304 Stainless Steel bracket and bottle filler, and vandal-resistant bottom plates provides a long lasting unit with added peace of mind.

FOUNTAIN VALVES

Bottle filler incorporates a touchless sensor operated stainless steel solenoid valve controlled by a transformer, and a push-button activated valve which offers the only all stainless-steel valve body that is machined out of solid bar stock and is fully serviceable through the front of the push button assembly offering access to the water control cartridge and integral water supply strainer on the fountain.

BUBBLER HEAD

Polished chrome-plated brass bubbler head with integral laminar flow prevents splashing while providing a superior flow pattern. The integral 11/16" dia. basin shank and stainless anti-rotation roll pin for vandal resistance strength. Shielded, angled stream opening provides a steady, sanitary source of drinking water at .45 gpm.

VANDAL RESISTANT

The bubbler head, sensor, round bowl, drain strainer and bottom plate are locked in place, discouraging unwanted vandal tampering, and 30-second obstruction time-out to reduce tampering of sensor.

MOUNTING

3/16" (.47 cm) thick steel mounting plates are larger, thicker and stronger than any other plate in the industry, and shall include the all-thread studs, nuts, and washers which allows for easy installation to a framed wall. (P-trap and stop require rear access).

OPTIONS

- Water Filter: Model 6480 filter kit with 3000 gallon carbon block filter, filter head, and mounting bracket.
- Support Frame: Model 6800 In-wall floor mounted fixture support legs, welded steel 4-bolt floor flanges, and supplied with 'U' bolts and hardware.

For more information, visit www.hawesco.com or call (888) 640-4297.



SPECIFICATIONS

1001 / BP6 / 6700 (x2) / 1920HO / BP15

Order these items to make up the Model 1001-1920 fountain with stainless steel back panel, bottle filler with stainless steel back plate, and fountain mounting plates shown above.

FOR INDOOR USE ONLY

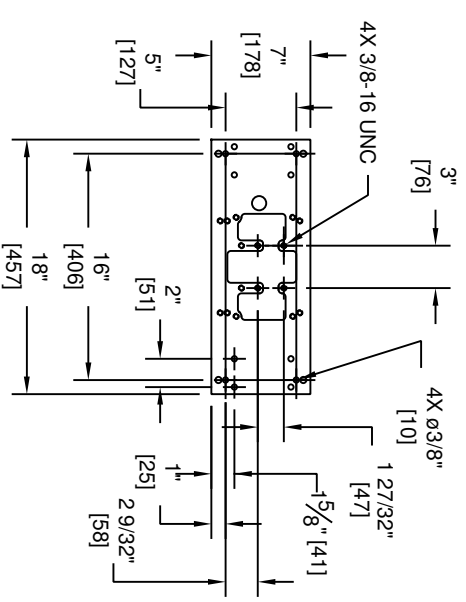
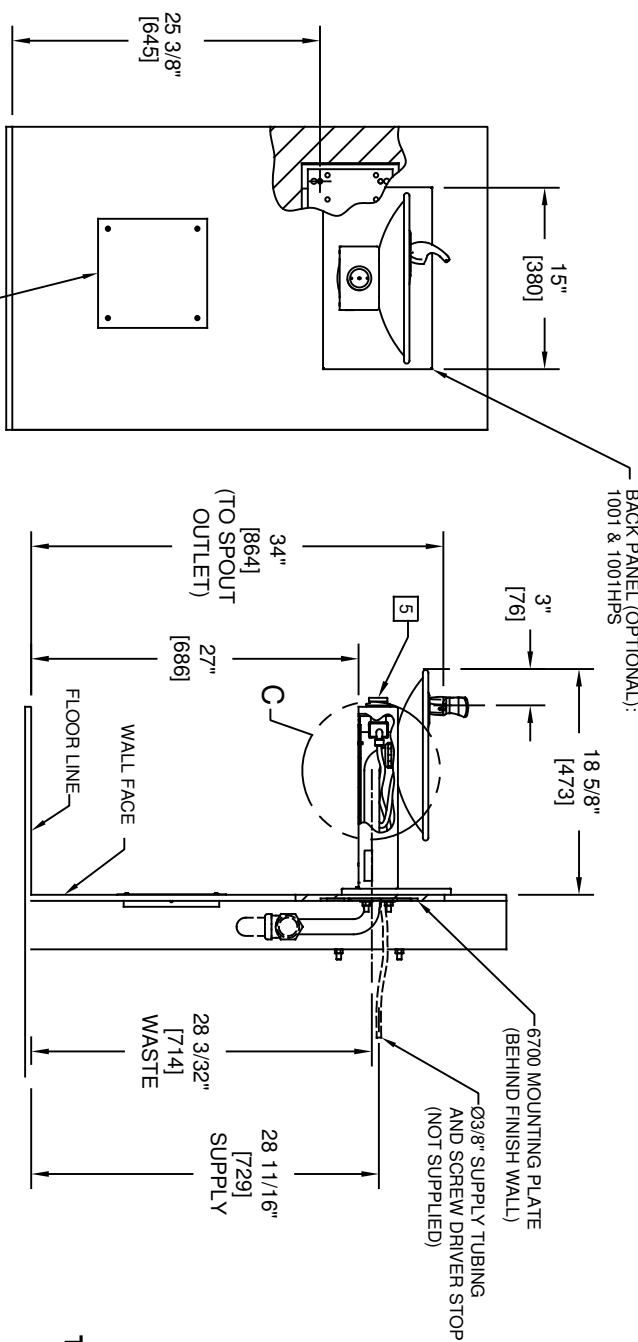
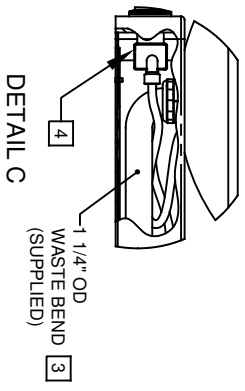
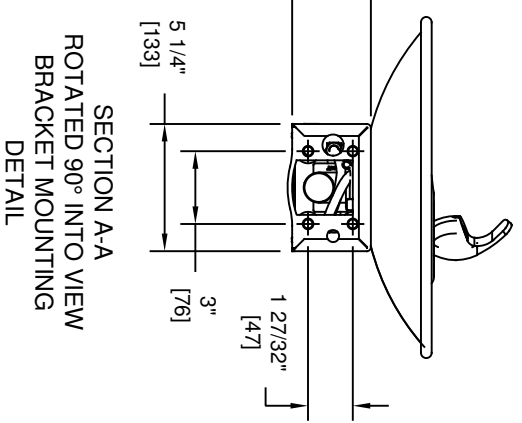
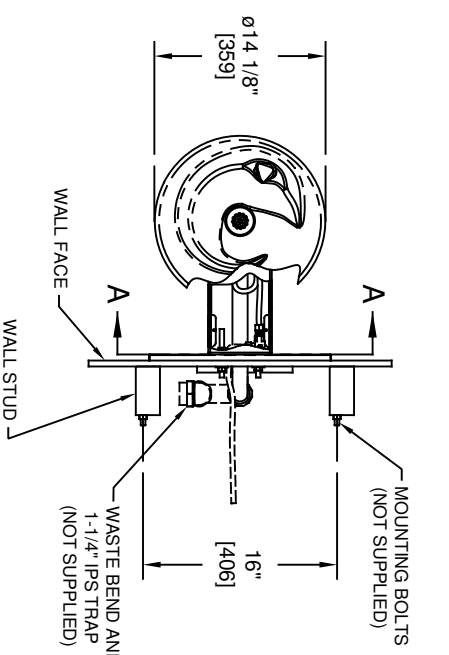
APPLICATIONS

Model 1001-1920HO wall mounted ADA vandal-resistant drinking fountain and motion activated bottle filler shall include an 18 gauge Type 304 Stainless Steel satin finish basin with integral swirl design, 14 gauge Type 304 Stainless steel wall bracket and bottle filler bracket, 3/16" (.47 cm) thick steel mounting plates for fountain and bottle filler, 100% lead-free waterways, touchless sensor operated solenoid valve with 30-second obstruction time-out for the bottle filler, and vandal-resistant push-button operated stainless-steel valve with front-accessible cartridge and flow adjustment on the fountain, polished chrome-plated brass vandal-resistant bubbler head with integral laminar anti-squirt flow, 1 gpm (3.78 L) laminar flow bottle filler, chrome plated brass vandal-resistant waste strainer, vandal-resistant bottom plates, and 1-1/4" (3.2 cm) O.D. waste pipe. (P-trap and stop require rear access). Manufactured to be lead-free by all known definitions including NSF/ANSI/CAN 61-Section 9, NSF/ANSI/ CAN 372, California Proposition 65, and the Federal Safe Drinking Water Act. Product is compliant to California Health and Safety Code 116875 (AB 1953-2006), and 116876 (AB 100) "NSF/ANSI/CAN 61: Q ≤ 1".





NOTES:

1. HOLD ROUGH-IN DIMENSIONS $\pm 1/8"$ (3.2mm).
2. WHEN INSTALLING THIS UNIT, LOCAL, STATE, OR FEDERAL CODES SHOULD BE ADHERED TO FOR INSTALLATION DIMENSIONS (LOCATIONS), WASTE AND SUPPLY REQUIREMENTS OTHER THAN SHOWN.
3. INSTALLER MUST PROVIDE TRAP FOR PROPER INSTALLATION.
4. REMOVE VALVE FROM PUSH BUTTON TO INSTALL WASTE ELBOW ONTO BOWL. AFTER WASTE ELBOW IS INSTALLED, REINSTALL VALVE AND ADJUST FLOW.
5. REFER TO 5874 SERIES OPERATION AND MAINTENANCE MANUAL FOR PUSH BUTTON AND VALVE INSTALLATION/MAINTENANCE INSTRUCTIONS.



**MUST BE INSTALLED BEFORE FINISH WORK
THIS PLATE IS REQUIRED - SOLD SEPARATELY.**



1456 KLEPPE LANE
SPARKS, NEVADA 89431
(775) 359-4712 FAX (775) 359-7424
E-MAIL: HAWS@HAWS.CO.COM
WEBSITE: WWW.HAWS.CO.COM

1001/1001HPS

MODEL(S)

1001/1001HPS

SCALE: 1:1 DRAWING TYPE: INSTALLATION

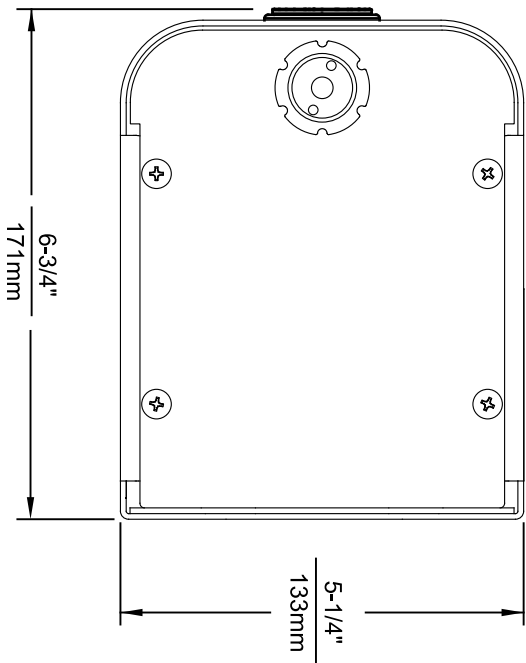
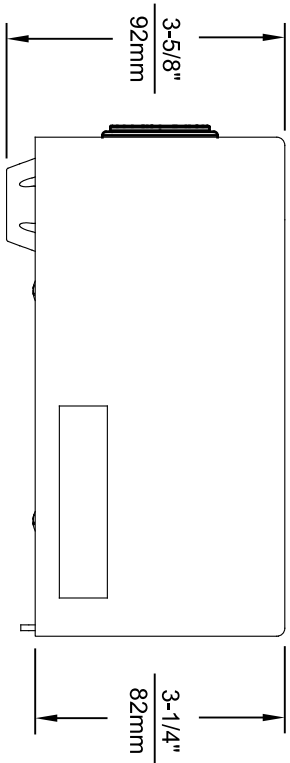
SIZE: A SHEET 1 OF 1

REVISION: 21

APPROVED: FV DATE: 04/02/20

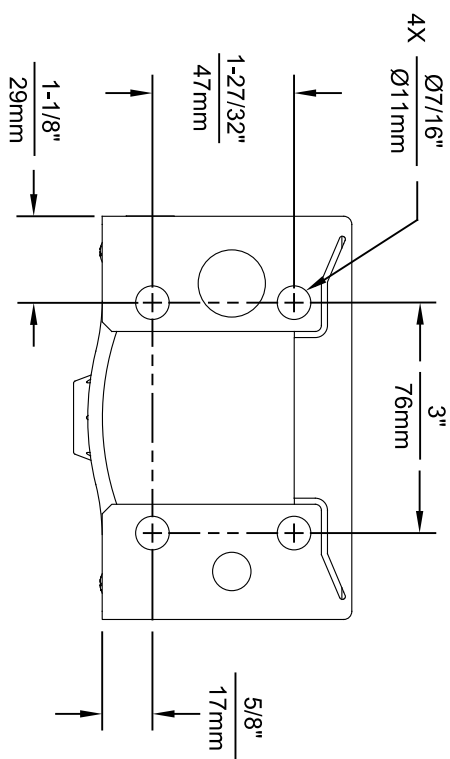
ECN NO. REVISED PER: FV
ECN: 5927 FV
DATE: 05/97 CHKD: DP
RTM

PART NUMBER
00002076304.D

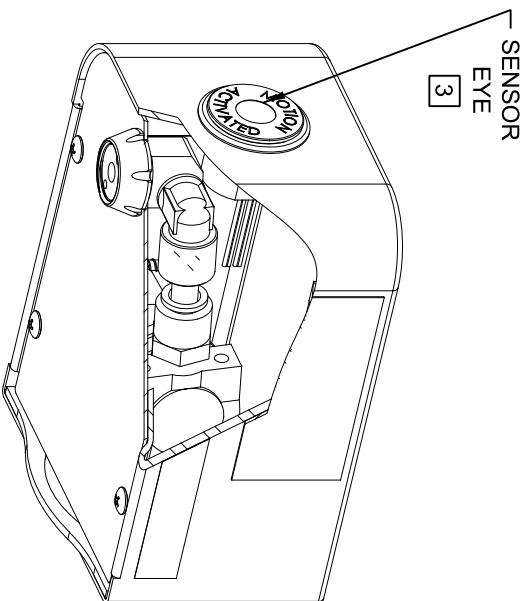


NOTES:

1. SEE SHEETS 2 THRU 7 FOR BOTTLE FILLER ADULT ADA HEIGHT APPLICATIONS AND SHEET 8 FOR CHILD ADA HEIGHT APPLICATIONS.
2. WHEN INSTALLING THIS UNIT, LOCAL, STATE OR FEDERAL CODES SHOULD BE ADHERED TO FOR INSTALLATION LOCATIONS, WASTE AND SUPPLY REQUIREMENTS OTHER THAN SHOWN.
- 3 REFER TO 1RKH0.4 OPERATION & MAINTENANCE INSTRUCTIONS FOR SENSOR SETUP.



1920HO SERIES MOUNTING HOLE LOCATIONS
(3/8"-16 UNC MOUNTING HARDWARE NOT SUPPLIED)



ECON. NO. 5574

REVENUE PER FV 5574

DATE: 08/19/20

CHKD: KM

DATE: 11/04/24

APPROVED: FV

MODEL(S)

1920HO/1920HPSHO/1920WHO

SCALE: N/A

DRAWING TYPE:

INSTALLATION:

SIZE: A

SHEET: 1 of 8

REVISION: 08

CONTRACT NO. 1920HO/1920HPSHO/1920WHO

DATE: 08/19/20

CHKD: KM

DATE: 11/04/24

APPROVED: FV

MODEL(S)

1920HO/1920HPSHO/1920WHO

SCALE: N/A

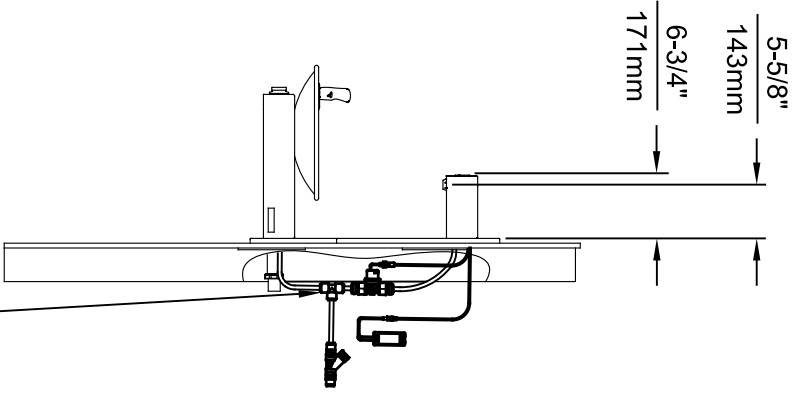
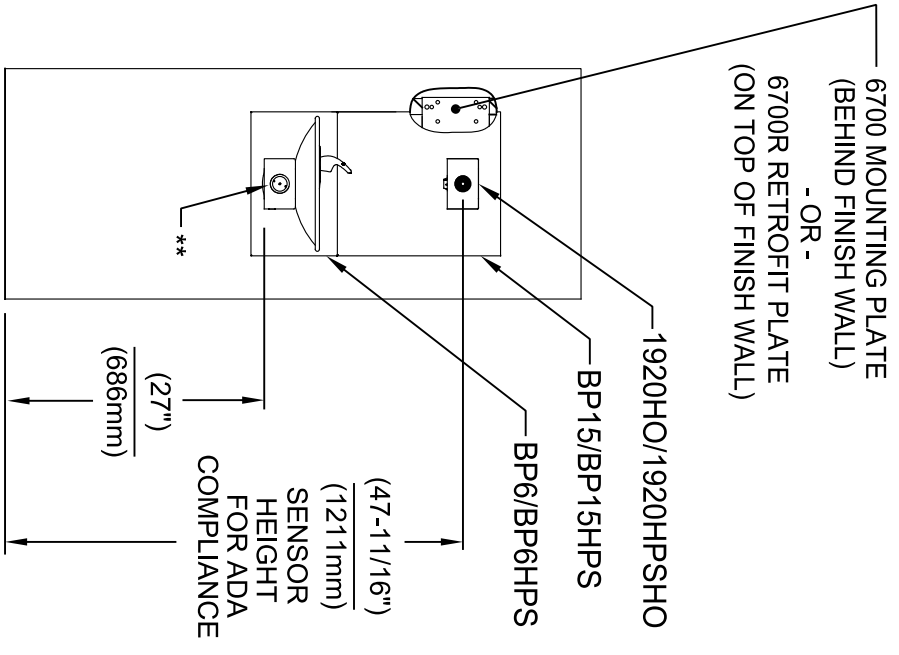
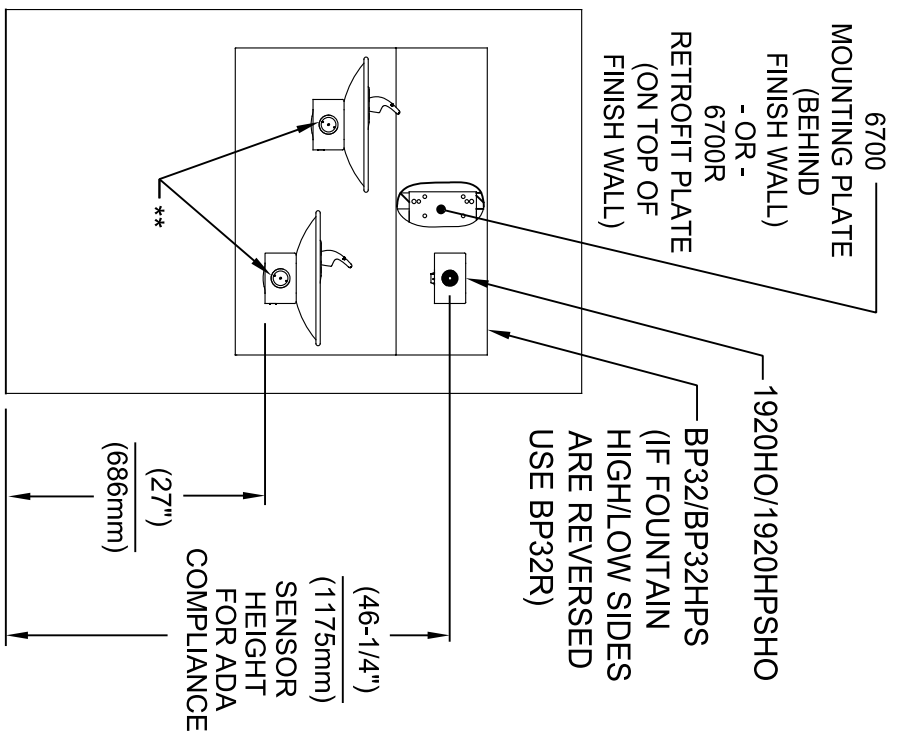
DRAWING TYPE:

INSTALLATION:

SIZE: A

SHEET: 1 of 8

REVISION: 08

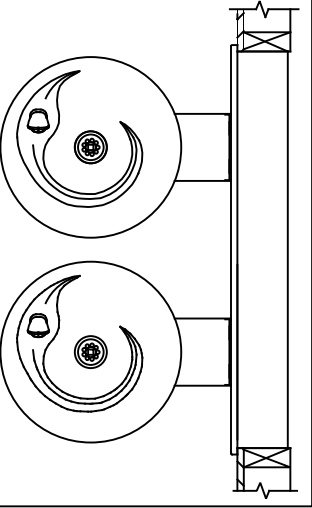


INSTALLATION ABOVE HAWWS 1011 & H1011.8 SERIES

INSTALLATION ABOVE HAWWS 1001 & H1001.8 SERIES


* IF YOUR FOUNTAIN IS THIS STYLE USE THESE DIMENSIONS

1. SEE SEPARATE INSTALLATION DRAWINGS FOR MOUNTING PLATES AND BACK PANELS (SHOWN FOR REFERENCE - NOT SUPPLIED).
2. WHEN INSTALLING THIS UNIT, LOCAL, STATE OR FEDERAL CODES SHOULD BE ADHERED TO FOR INSTALLATION LOCATIONS, WASTE & SUPPLY REQUIREMENTS OTHER THAN SHOWN.



** EXISTING PUSH BUTTON ASSEMBLY SHOWN, CAN BE CONVERTED TO HANDS OFF STYLE, USING RETRO-FIT KIT MODEL 1RKHO.H OR 2RKHO.H DEPENDING ON CUSTOMER REQUIREMENTS.

3/8" O.D. SUPPLY TUBING AND 3/8" O.D. PUSH-IN TEE SUPPLIED. (CONNECT TO FOUNTAIN SUPPLY LINE)



Haws
Since 1906

1455 KLEPPLE LANE
SPARKS, NE/VADA 89431
(775) 359-4712 FAX (775) 359-1424
E-MAIL: HAWS@HAWS.CO.COM
WEBSITE: WWW.HAWS.CO.COM

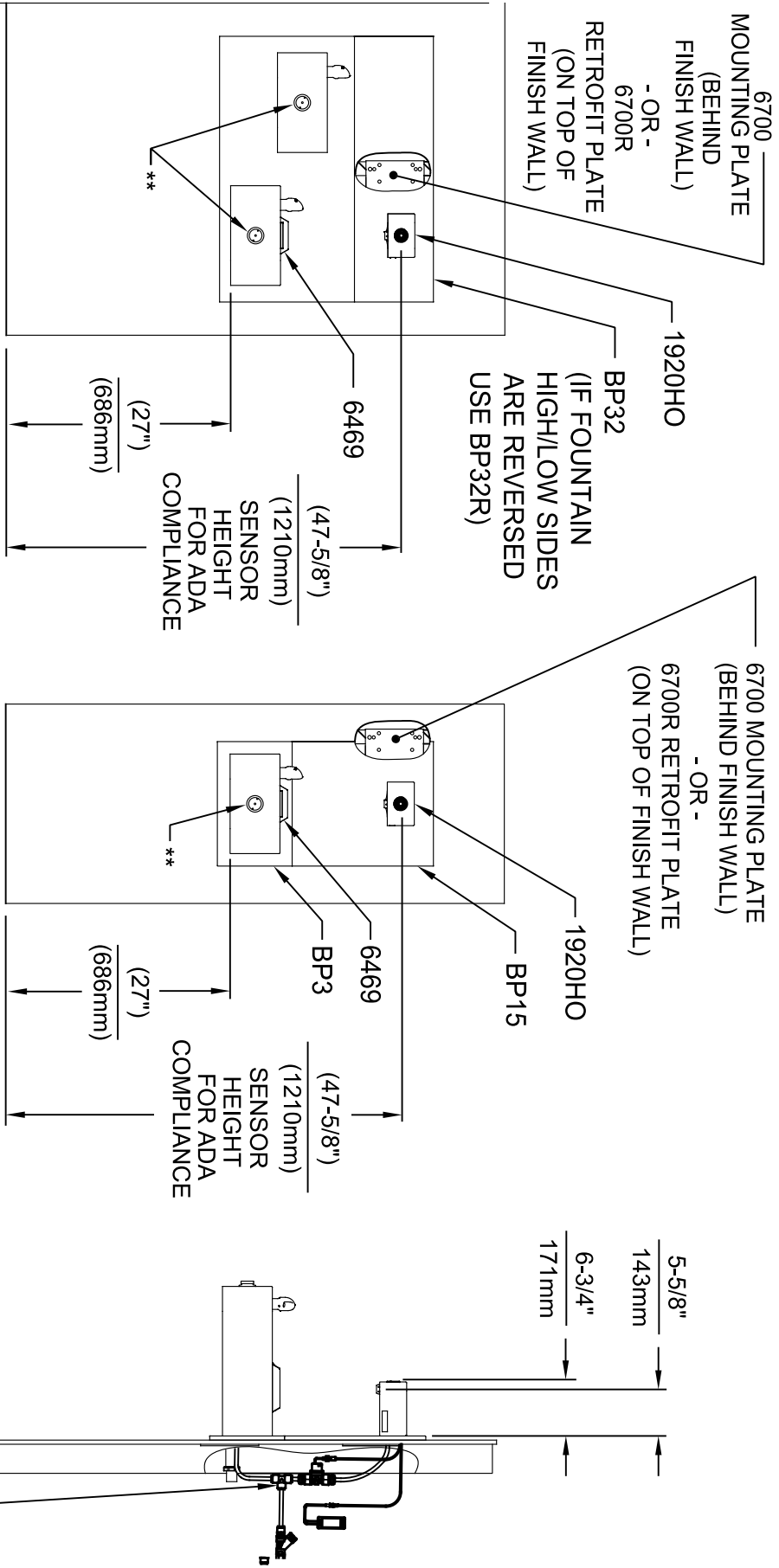
EGN NO. REVISED PERBY: FV
5574 EGN 6136 FV
DRAWN: DATE: CHK'D: FV
FV 08/18/20 KAM

MODEL(S)
1920HO/1920HPSHO/1920WHO

PART NUMBER
0510001063.D

REVISION
8

APPROVED: DATE: SCALE: N/A DRAWING TYPE: INSTALLATION SIZE: A1 SHEET 2 OF 8



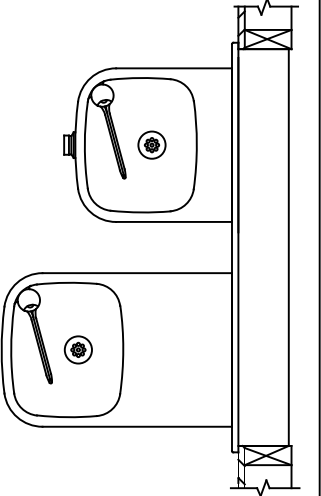
INSTALLATION ABOVE HAWS 1119 & H1119.8 SERIES

**INSTALLATION ABOVE HAWS 1109 & H1109.8 SERIES
SEE SHEET 8 FOR INSTALLATION AT CHILD HEIGHT**

* IF YOUR FOUNTAIN IS THIS STYLE USE THESE DIMENSIONS

1. SEE SEPARATE INSTALLATION DRAWINGS FOR MOUNTING PLATES, BACK PANELS AND DRIP TRAY (NOT SUPPLIED).

2. WHEN INSTALLING THIS UNIT, LOCAL, STATE OR FEDERAL CODES SHOULD BE ADHERED TO FOR INSTALLATION LOCATIONS, WASTE & SUPPLY REQUIREMENTS OTHER THAN SHOWN.

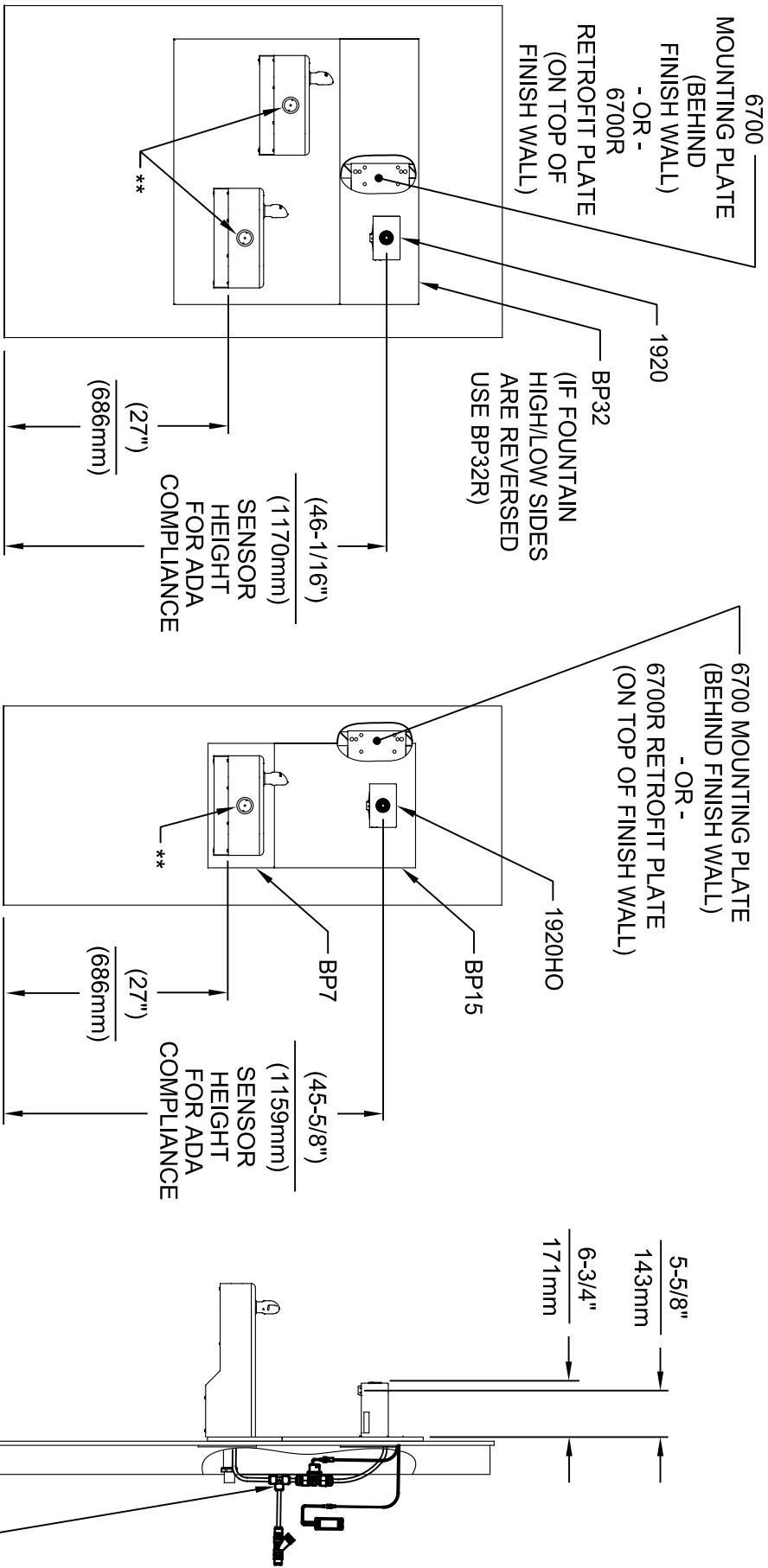


** EXISTING PUSH BUTTON ASSEMBLY SHOWN, CAN BE CONVERTED TO HANDS OFF STYLE, USING RETRO-FIT KIT MODEL 1RKHO.H OR 2RKHO.H DEPENDING ON CUSTOMER REQUIREMENTS.

3/8" O.D. SUPPLY TUBING AND 3/8" O.D. PUSH-IN TEE SUPPLIED. (CONNECT TO FOUNTAIN SUPPLY LINE)



ECON. NO. REVISED PERBY:		MODEL(S)		1455 KLEPPELANE	
5574	ECON. 6136	FV		1920HO/1920HPSHO/1920WHO	
DRAWN:	DATE:	CHKD:			
FV	08/18/20	KAM			
APPROVED:	DATE:	SCALE:	N/A	DRAWING TYPE:	INSTALLATION
FV	11/04/24				SIZE: A1 SHEET: 3 OF 8
SPARKS, NE/VADA 89431		PART NUMBER		REVISION	
(775) 359-4712 FAX (775) 359-1424		0510001063.D		8	
E-MAIL: HAWS@HAWS.CO.COM					
WEBSITE: WWW.HAWS.CO.COM					



INSTALLATION ABOVE HAWS 1117L & H1117.8 SERIES

INSTALLATION ABOVE HAWS 1107L & H1107.8 SERIES

SEE SHEET 8 FOR INSTALLATION AT CHILD HEIGHT

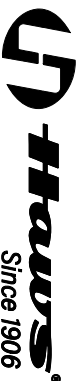
* IF YOUR FOUNTAIN IS THIS STYLE USE THESE DIMENSIONS

1. SEE SEPARATE INSTALLATION DRAWINGS FOR MOUNTING PLATES AND BACK PANELS (SHOWN FOR REFERENCE - NOT SUPPLIED).

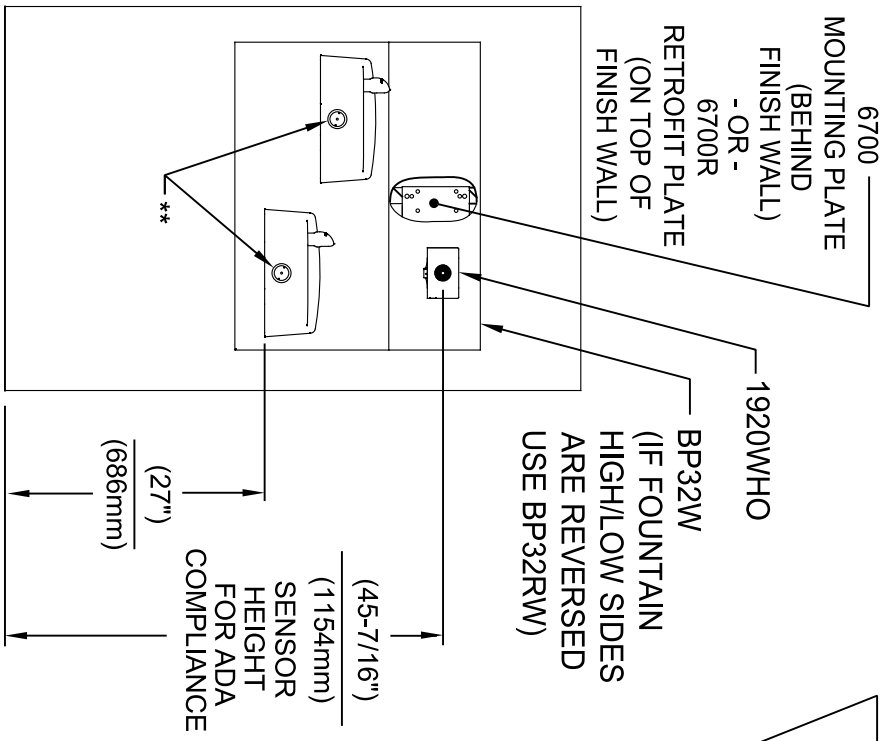
2. WHEN INSTALLING THIS UNIT, LOCAL, STATE OR FEDERAL CODES SHOULD BE ADHERED TO FOR INSTALLATION LOCATIONS, WASTE & SUPPLY REQUIREMENTS OTHER THAN SHOWN.



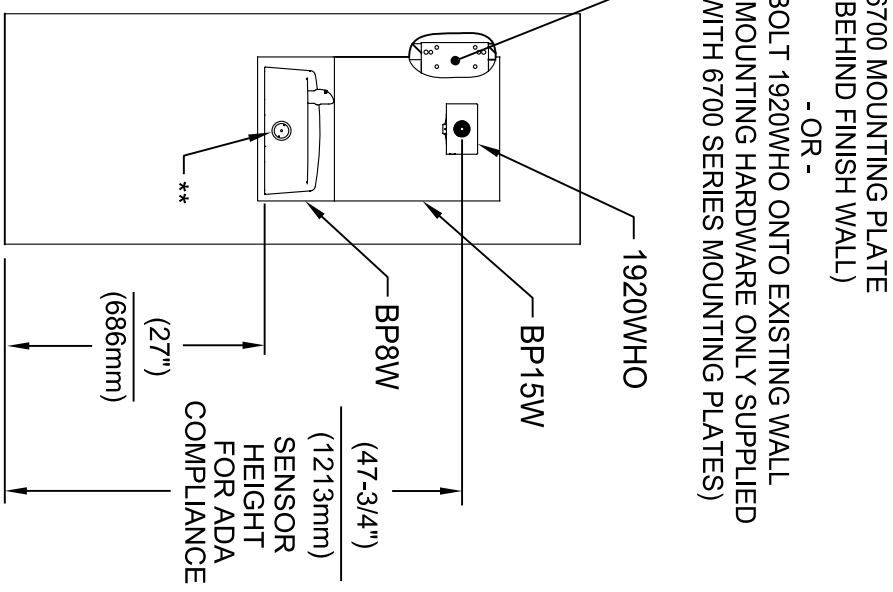
** EXISTING PUSH BUTTON ASSEMBLY SHOWN, CAN BE CONVERTED TO HANDS OFF STYLE, USING RETRO-FIT KIT MODEL 1RKHO.H OR 2RKHO.H DEPENDING ON CUSTOMER REQUIREMENTS.



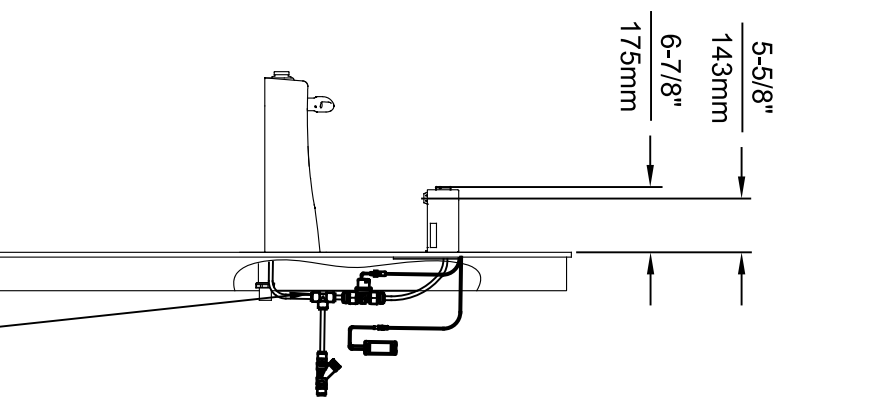
ECON NO. REVISED PERBY:		MODEL(S)		1455 KLEPPLE LANE	
5574	ECON 6136	FV		1920HO/1920HPSHO/1920WHO	SPARKS, NE/VADA 89431
DRAWN:	DATE:	CHKD:			(775) 359-4712 FAX (775) 359-1424
FV	08/18/20	KAM			E-MAIL: HAWS@HAWS.CO.COM
APPROVED:	DATE:	SCALE:	N/A	DRAWING TYPE:	WEBSITE: WWW.HAWS.CO.COM
FV	11/04/24				
				INSTALLATION	PART NUMBER
				SIZE: A1	0510001063.D
				SHEET: 4 OF 8	REVISION
					8



INSTALLATION ABOVE HAWS 1501



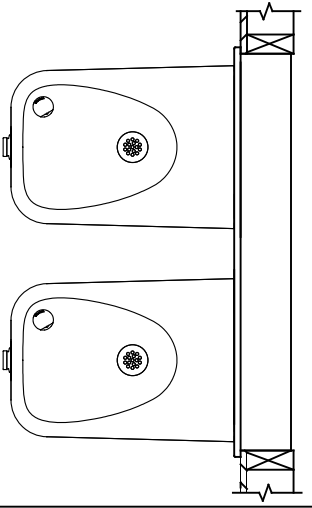
INSTALLATION ABOVE HAWS 1311
SEE SHEET 8 FOR INSTALLATION AT CHILD HEIGHT



* IF YOUR FOUNTAIN IS THIS STYLE USE THESE DIMENSIONS

1. SEE SEPARATE INSTALLATION DRAWINGS FOR MOUNTING PLATES AND BACK PANELS (SHOWN FOR REFERENCE - NOT SUPPLIED).

2. WHEN INSTALLING THIS UNIT, LOCAL, STATE OR FEDERAL CODES SHOULD BE ADHERED TO FOR INSTALLATION LOCATIONS, WASTE & SUPPLY REQUIREMENTS OTHER THAN SHOWN.



** EXISTING PUSH BUTTON ASSEMBLY SHOWN, CAN BE CONVERTED TO HANDS OFF STYLE, USING RETRO-FIT KIT MODEL 1RKHO.H OR 2RKHO.H DEPENDING ON CUSTOMER REQUIREMENTS.

3/8" O.D. SUPPLY TUBING AND 3/8" O.D. PUSH-IN TEE SUPPLIED. (CONNECT TO FOUNTAIN SUPPLY LINE)



HAWS
Since 1906

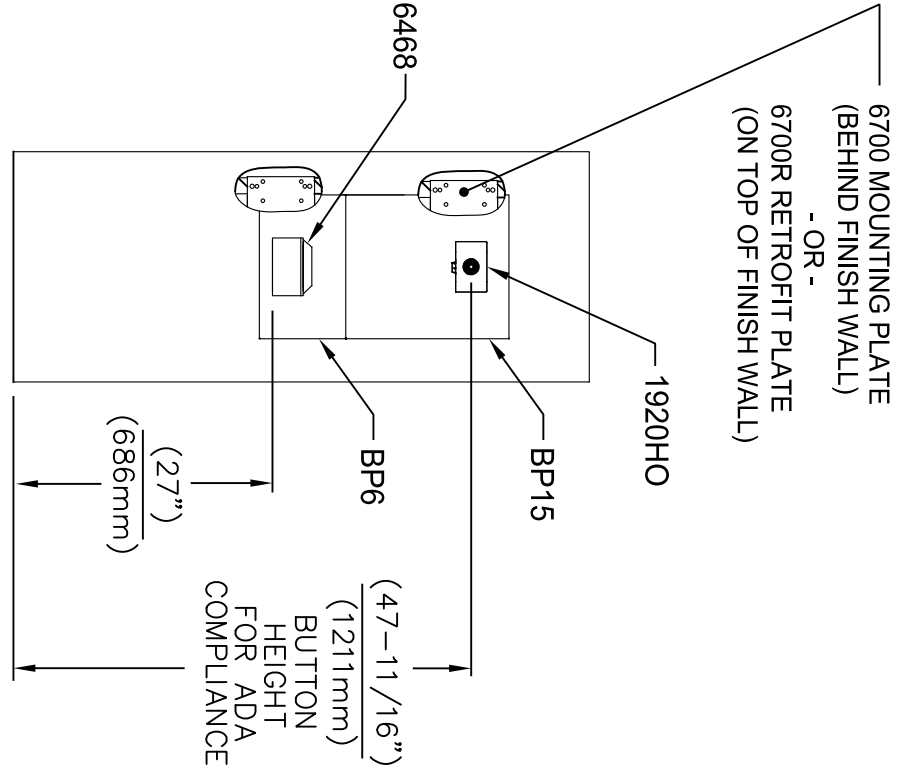
1455 KLEPPER LANE
SPARKS, NEVADA 89431
(775) 359-4712 FAX (775) 359-1424
E-MAIL: HAWS@HAWSCO.COM
WEBSITE: WWW.HAWSCO.COM

ECN NO. REVISED PERBY: 5574
DATE: 08/18/20
FV: KM

MODEL(S): 1920HO/1920HPSHO/1920WHO

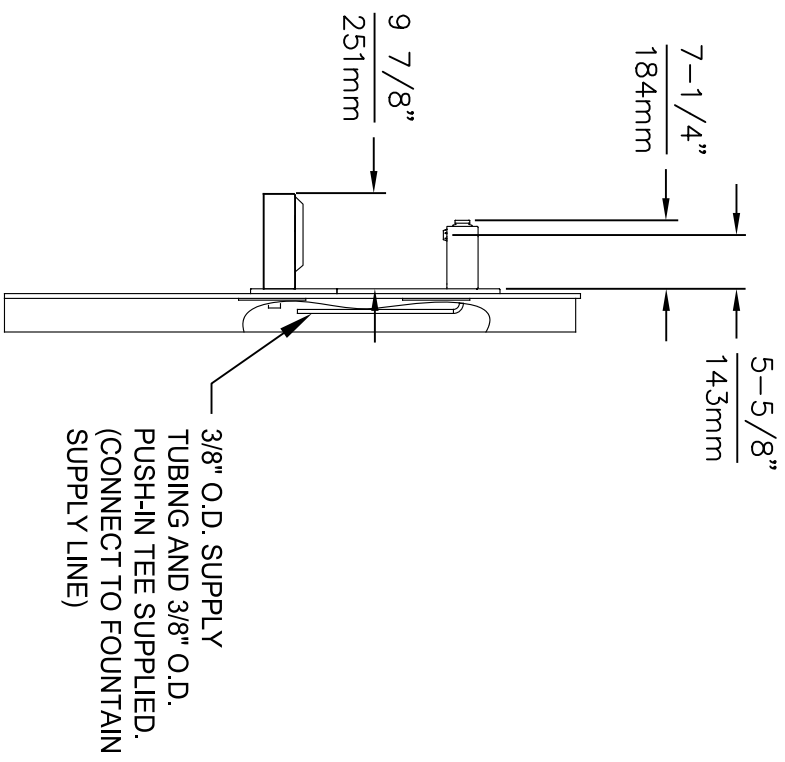
PART NUMBER: 0510001063.D
REVISION: 8

APPROVED: DATE: SCALE: N/A DRAWING TYPE: INSTALLATION SIZE: A1 SHEET: 5 OF 8



INSTALLATION ABOVE 6468

1. SEE SEPARATE INSTALLATION DRAWINGS FOR MOUNTING PLATES AND BACK PANELS (SHOWN FOR REFERENCE - NOT SUPPLIED).
2. WHEN INSTALLING THIS UNIT, LOCAL, STATE OR FEDERAL CODES SHOULD BE ADHERED TO FOR INSTALLATION LOCATIONS, WASTE & SUPPLY REQUIREMENTS OTHER THAN SHOWN.





Haws®
Since 1906

1455 KLEPPLE LANE
SPARKS, NEVADA 89431
(775) 359-4712 FAX (775) 359-1424
E-MAIL: HAWS@HAWS.CO.COM
WEBSITE: WWW.HAWS.CO.COM

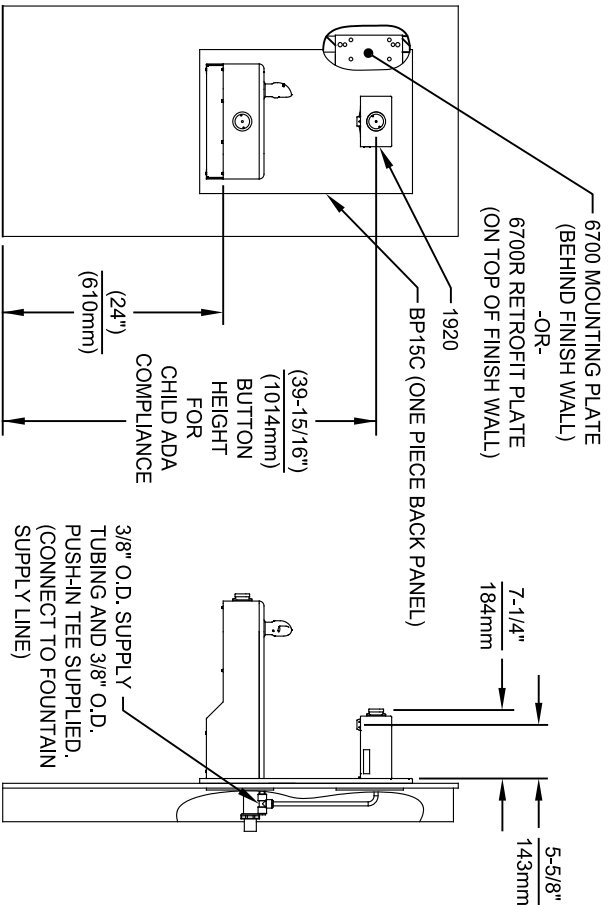
ECN NO. REVISED PERBY: FV
DRAWN: 5744 ECN 6136 FV
FV 10/04/21 CHKD: KM
APPROVED: FV DATE: 11/04/24

MODEL(S)
1920HO/1920HPSHO/1920WHO

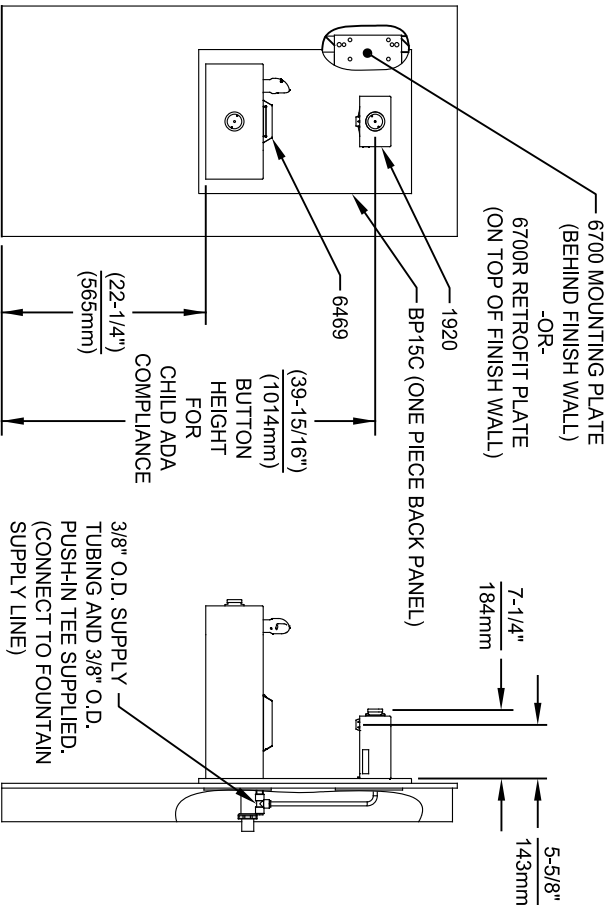
SCALE: N/A
DRAWING TYPE: INSTALLATION

PART NUMBER
0510001063.D
REVISION
8

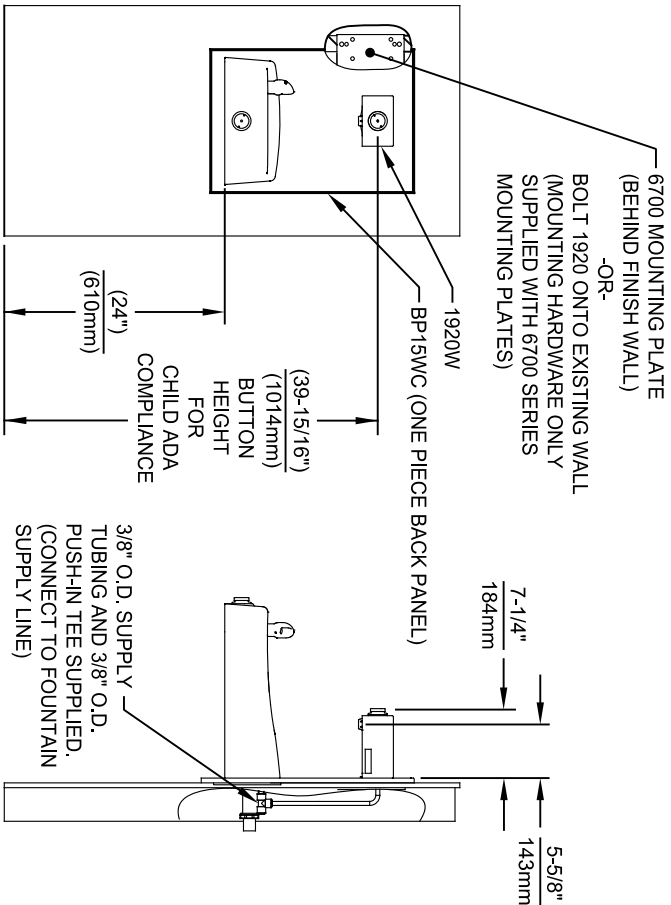
SIZE: A1 SHEET: 7 OF 8



INSTALLATION ABOVE HAWS 1107L & H1107.8 SERIES



INSTALLATION ABOVE HAWS 1109, 1109.14 & H1109.8 SERIES
MUST USE PARALLEL APPROACH WITH THIS BOWL COMBINATION



INSTALLATION ABOVE HAWS 1311

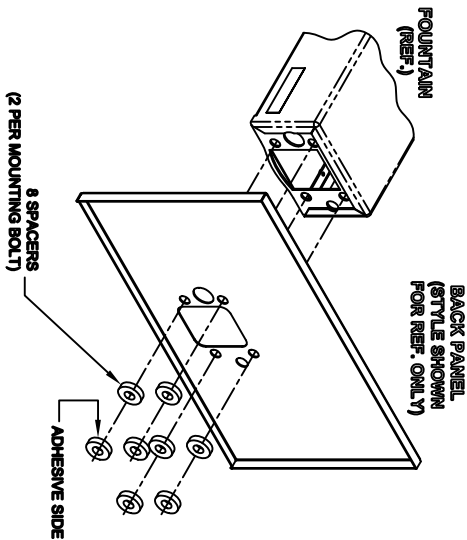
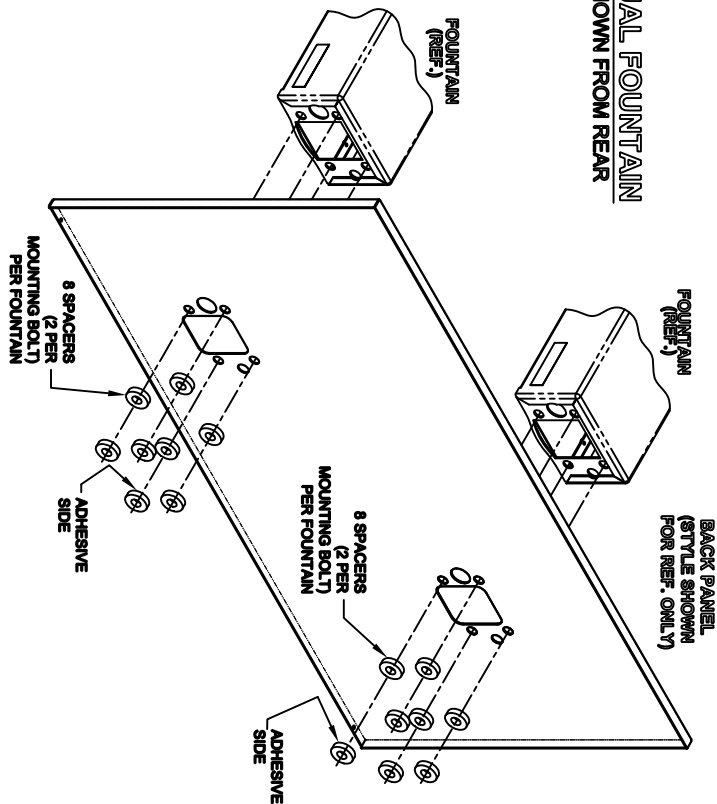
NOTES:

1. HEIGHT DIMENSIONS SHOWN ARE FOR CHILD ADA APPLICATIONS:
 - BOTTLE FILLER HEIGHT AT 40" MAX.
 - DRINKING FOUNTAIN BUBBLER HEIGHT AT 30" MAX.
 - (SEE SHEETS 3, 4 & 5 FOR ADULT ADA HEIGHT DIMENSIONS)
2. SEE SEPARATE INSTALLATION DRAWINGS FOR MOUNTING PLATES AND BACK PANELS (SHOWN FOR REFERENCE - NOT SUPPLIED).
3. WHEN INSTALLING THIS UNIT, LOCAL, STATE OR FEDERAL CODES SHOULD BE ADHERED TO FOR INSTALLATION LOCATIONS, WASTE & SUPPLY REQUIREMENTS OTHER THAN SHOWN.



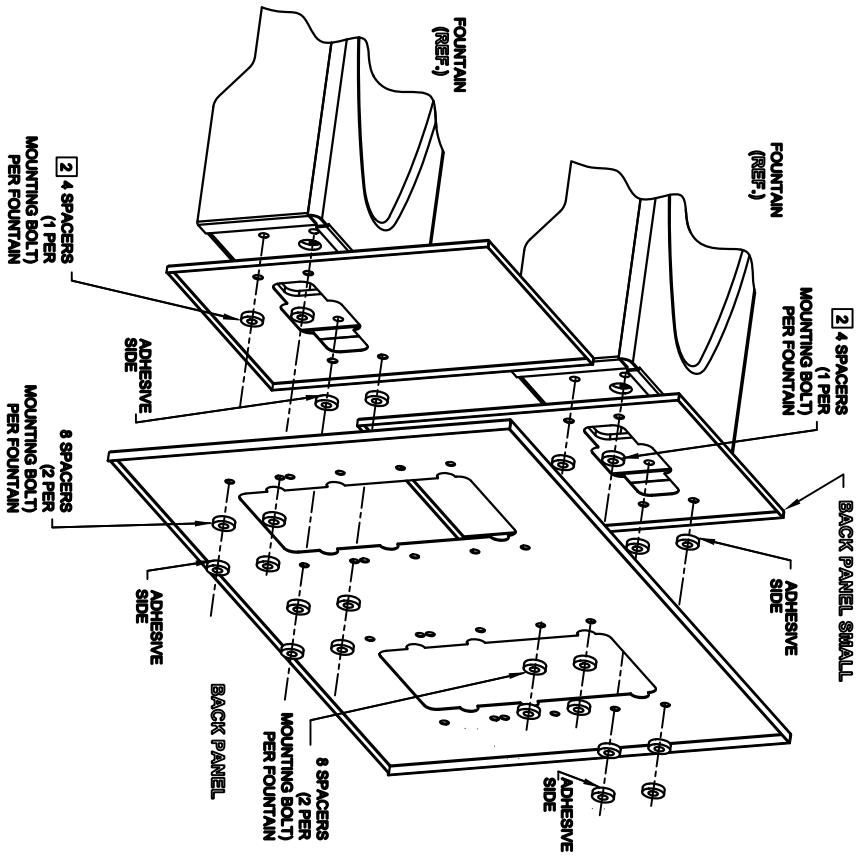
ECON. NO. REVISED PERBY:		MODEL(S)		1455 KLEPPER LANE	
5744	ECON. 6136	FV		SPARKS, NE/ADA 89431	
DRAWN:	DATE:	CHKD:		(775) 359-4712 FAX (775) 359-1424	
FV	02/26/24	KAM		E-MAIL: HAWS@HAWS.CO.COM	
APPROVED:	DATE:	SCALE:	N/A	WEBSITE: WWW.HAWS.CO.COM	
FV	11/04/24			PART NUMBER	
				1920H0/1920HPSHO/1920WH0	
				0510001063.D	
				REVISION	
				8	
				8 OF 8	

DUAL FOUNTAIN SHOWN FROM REAR



NOTES:

- 1 ON ALL BACK PANEL MODELS, SPACERS ARE NOT USED WHEN A MOUNTING FRAME IS USED EXCEPT AS SPECIFIED IN NOTE 2
- 2 INDICATED SPACERS ARE USED WITH MOUNTING FRAME (DUAL ADJUSTABLE)

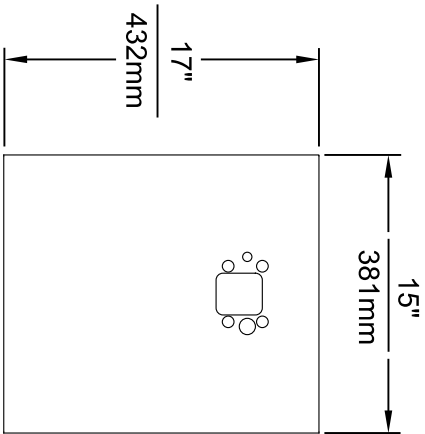


DUAL FOUNTAIN ADJUSTABLE SHOWN FROM REAR

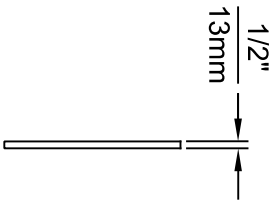
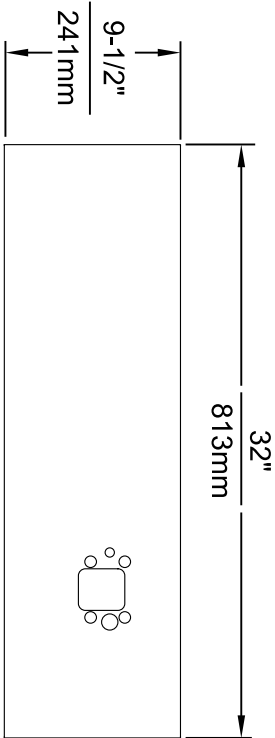


1465 KLEPPE LANE
SPARKS, NEVADA 89431
(775) 366-4712 FAX (775) 366-1424
E-MAIL: HAWS@HAWS.CO.COM
WEBSITE: WWW.HAWS.CO.COM

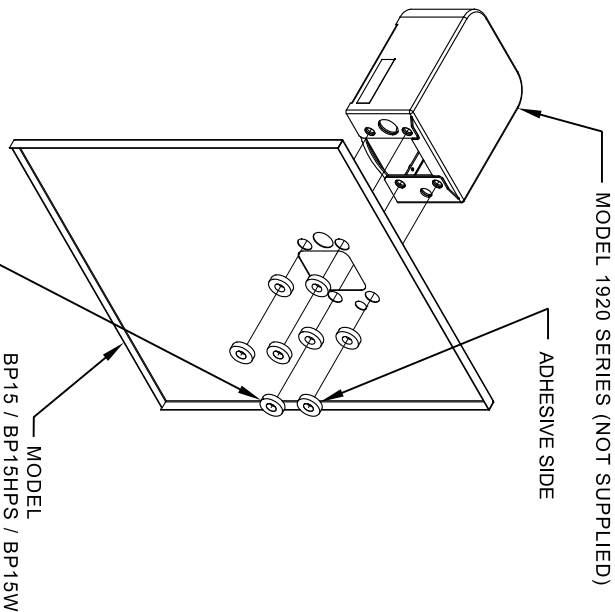
ECN NO. REVISED PER BY:	MODEL(S)	BACK PANEL	PART NUMBER
ECN: 4895	HA	SPACER INSTRUCTIONS	0002082219
DATE: 10/20/11	CKD:		DRAWING NO. 08292C00
APPROVER: DATE:	SCALE: 1:10	DRAWING TYPE: INSTALLATION	SIZE: A SHEET 1 OF 1



MODEL BP15 / BP15HPS / BP15W



MODEL BP32 / BP32HPS / BP32W

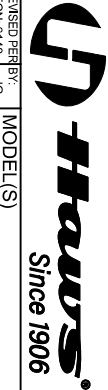


8 SPACERS (2 PER MOUNTING BOLT IF THE MOUNTING PLATE (MODEL 6700 - NOT SUPPLIED) IS INSTALLED BEHIND THE FINISHED WALL. USE 1 SPACER PER BOLT FOR RETROFITS WHERE THE MOUNTING PLATE (MODEL 6700R - NOT SUPPLIED) IS INSTALLED IN FRONT OF THE FINISHED WALL)

INSTALLATION OVER SINGLE FOUNTAIN

SHOWN FROM REAR

(SEE SHEET 3 OF 3 FOR INSTALLATION OF SPACERS
ON COMBINATION BOTTLE FILLER AND FOUNTAIN
BACK PANELS FOR CHILD HEIGHT APPLICATIONS -
MODELS BP15C & BP15WC)

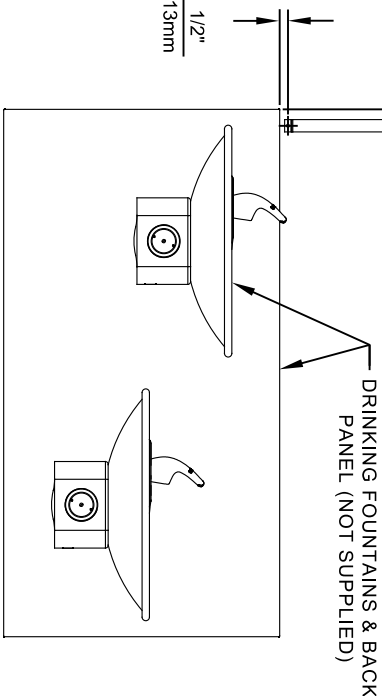


EQ'N NO. REVISION PER BY		MODEL(S)		PART NUMBER	
001	EQ'N 6148	J.G.	DRAWING, BACK PANEL, SPACER INSTALLATION	0510000493	
DRAWN	DATE	CHK'D	FOR BP15 SERIES & BP32 SERIES, BOTTLE FILLER	REVISION	
1	06/27/16	J.G.		6	
APPROVED:	DATE	SCALE:	DRAWING TYPE:	INSTALLATION	SHEET 1 OF 3
F.V.	02/11/25	1:1			

1455 KLEPPE LANE
SPARKS, NEVADA 89431
(775) 359-4712 FAX (775) 359-7424
E-MAIL: HAWS@HAWS.CO.COM
WEBSITE: WWW.HAWS.CO.COM

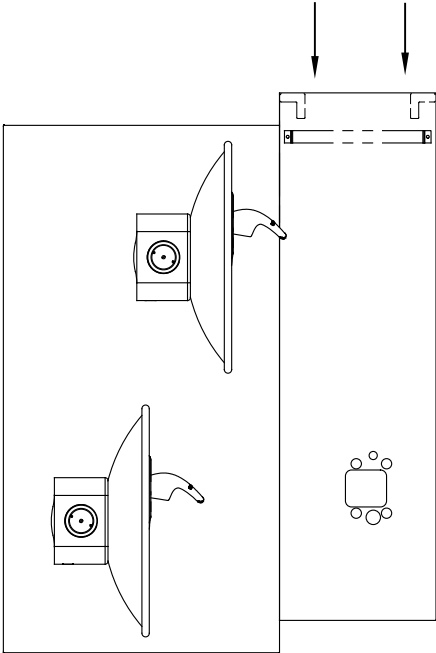
STEP 1

ATTACH SUPPLIED BRACKET TO WALL USING APPROPRIATE FASTENERS. BRACKET IS INSTALLED OVER THE HIGH-SIDE OF THE DRINKING FOUNTAIN



STEP 2

PLACE THE BACKPLATE AGAINST THE WALL AND SLIDE SIDEWAYS SO THE TABS CATCH UNDER THE BRACKET.

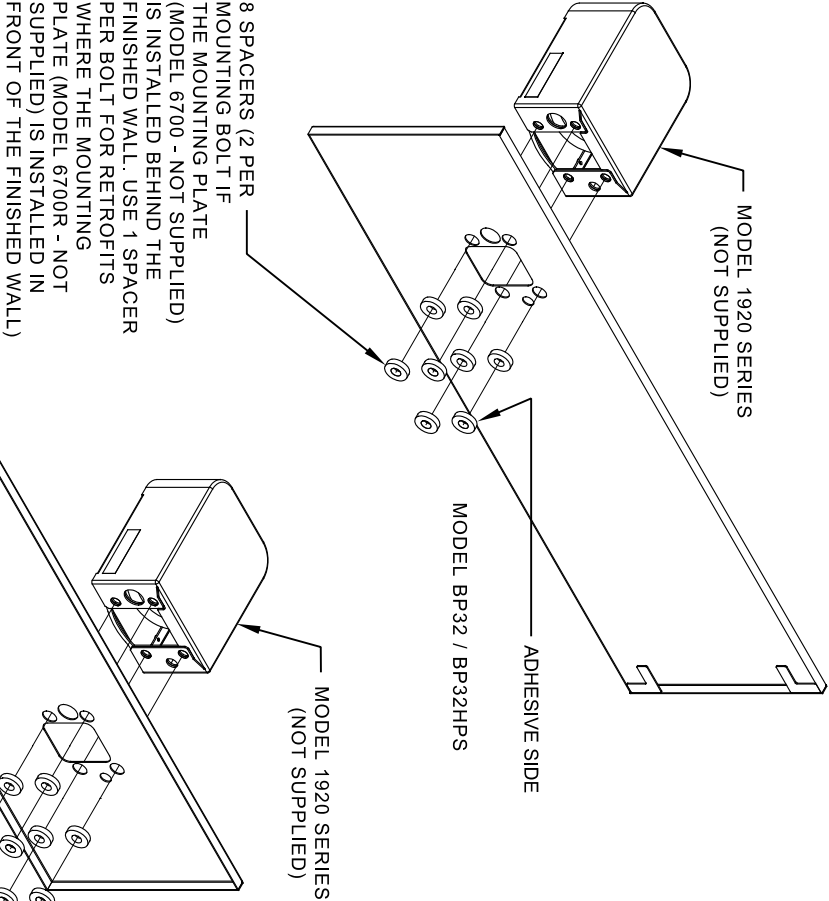


STEP 3

INSTALL THE BOTTLE FILLER (NOT SUPPLIED) PER THE INSTRUCTIONS SUPPLIED WITH THE UNIT.

NOTES:

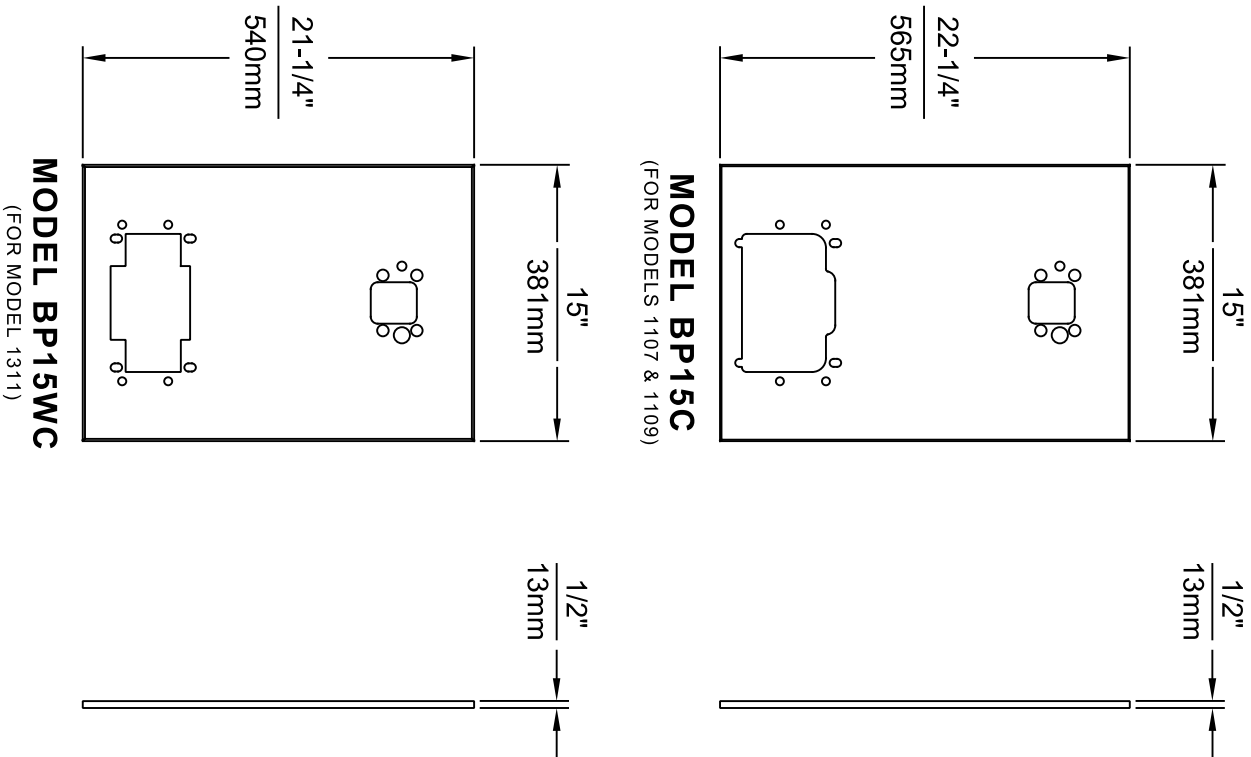
1. WHEN INSTALLING THIS UNIT, LOCAL, STATE OR FEDERAL CODES SHOULD BE ADHERED TO.
2. BOTTLE FILLERS, DRINKING FOUNTAINS & DRINKING FOUNTAIN BACK PANELS SHOWN FOR REFERENCE ONLY (NOT SUPPLIED).



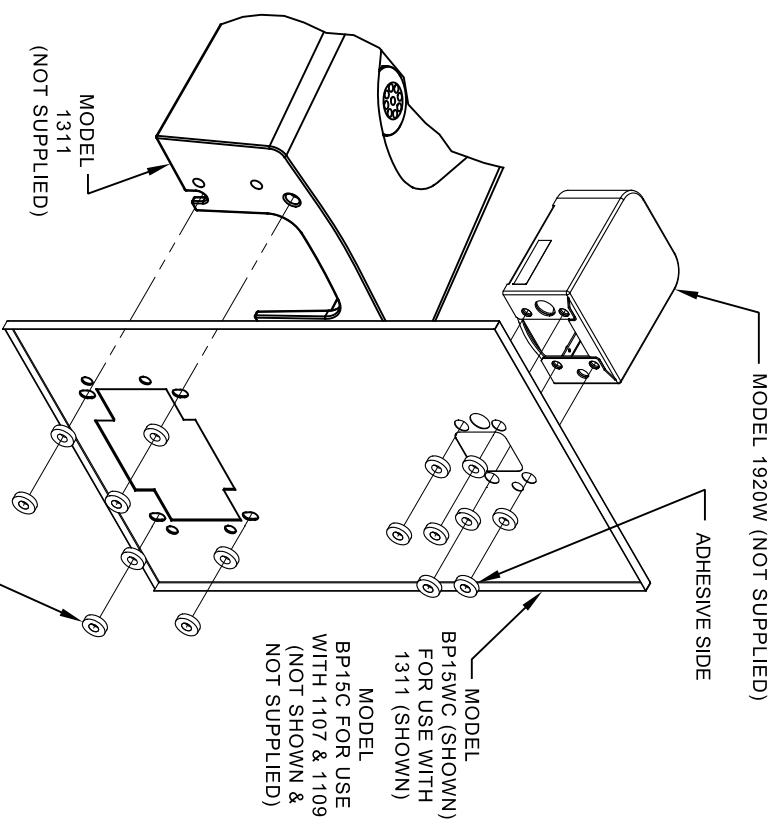
INSTALLATION OVER DOUBLE FOUNTAIN

SHOWN FROM REAR

EQN. NO. REQUESTED PER BY:		MODEL(S)	
SOFT	EQN. 6148	J.G.	
DRAWN	10/05/17	CHNO.	
APPROVED	DATE	J.G.	
F.V.	02/11/25	SCALE: 1:1	DRAWING TYPE: INSTALLATION
1455 KLEPPE LANE		PART NUMBER	
SPARKS, NEVADA 89431		0510000493	
(775) 359-4712 FAX (775) 359-7424		REVISION	
E-MAIL: HAWS@HAWS.CO.COM		6	
WEBSITE: WWW.HAWS.CO.COM		SHEET 2 OF 3	



- NOTES:
1. WHEN INSTALLING THIS UNIT, LOCAL, STATE OR FEDERAL CODES SHOULD BE ADHERED TO.
 2. BOTTLE FILLER AND DRINKING FOUNTAIN SHOWN FOR REFERENCE ONLY (NOT SUPPLIED).




16 SPACERS (2 PER MOUNTING BOLT IF BOTH MOUNTING PLATES (MODEL 6700 - NOT SUPPLIED) ARE INSTALLED BEHIND THE FINISHED WALL. USE 1 SPACER PER BOLT FOR RETROFITS WHERE BOTH MOUNTING PLATES (MODEL 6700R - NOT SUPPLIED) ARE INSTALLED IN FRONT OF THE FINISHED WALL)

ONE PIECE INSTALLATION ON SINGLE FOUNTAIN


SHOWN FROM REAR

(MODEL BP15C & BP15WC ARE COMBINATION BOTTLE FILLER AND FOUNTAIN BACK PANELS USED FOR CHILD HEIGHT APPLICATIONS ONLY ON MODELS 1107, 1109 & 1311 - BOTTLE FILLER & DRINKING FOUNTAIN NOT SUPPLIED)

		1455 KLEPPE LANE SPARKS, NEVADA 89431 (775) 359-4712 FAX (775) 359-7424 E-MAIL: HAWS@HAWS.CO.COM WEBSITE: WWW.HAWS.CO.COM	
EQUIPMENT NO. 6146		MODEL(S)	
SIZE 10/15/20		DRAWING, BACK PANEL, SPACER INSTALLATION	
DATE 02/11/25		FOR BP15 SERIES & BP32 SERIES, BOTTLE FILLER	
APPROVED: FV		SCALE: 1:1	
DATE 02/11/25		INSTALLATION	
FV		SIZE A	
		SHEET 3 OF 3	

6700 INDEX

INSTALLATION WITH:	TYPICAL USES	SEE SHEET ...
GENERAL INSTALLATION	IMPORTANT INFORMATION FOR ALL INSTALLATIONS	3 OF 6
1001 BOWLS	HAWS SERIES 1001X, 1001.8X	3 OF 6
1107 BOWLS	HAWS SERIES 1107X, 1107.8X	3 OF 6
1109 BOWLS	HAWS SERIES 1109X, 1109.8X	3 OF 6
1047 BOWLS	HAWS SERIES 1047	4 OF 6
1011 BOWLS	HAWS SERIES 1011X, 1011.8X	4 OF 6
1119 BOWLS	HAWS SERIES 1119X, 1119.8X	4 OF 6
1117 BOWLS	HAWS SERIES 1117X, 1117.8X	5 OF 6
1311 BOWLS	HAWS SERIES 1311	5 OF 6
1501 BOWLS	HAWS SERIES 1501	5 OF 6
CHILD HEIGHT	HAWS 1107PCH, 1109PCH, 1311PCH	6 OF 6



Haws®

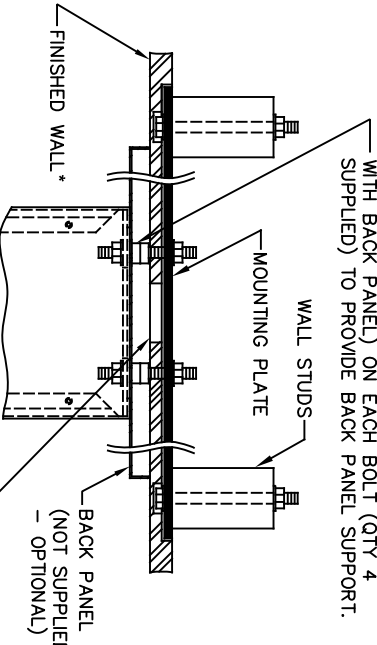
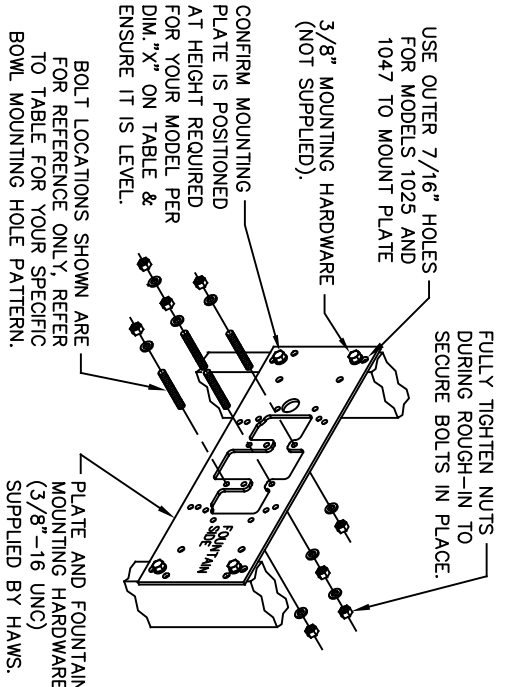
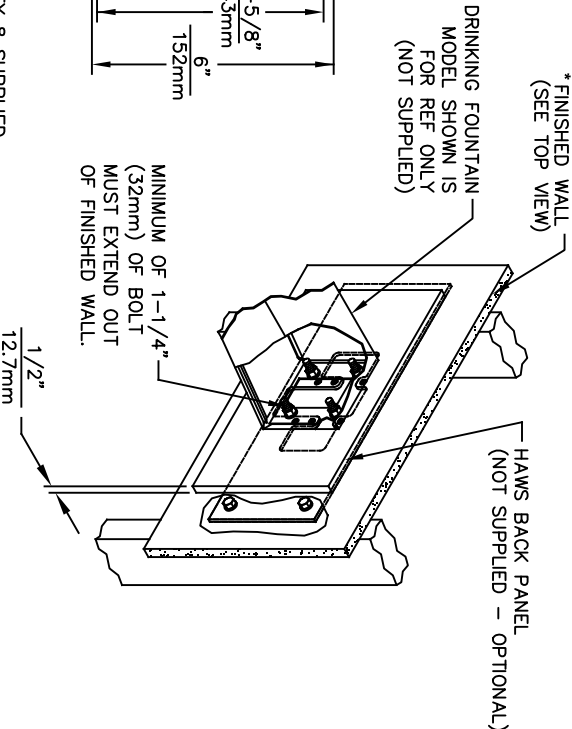
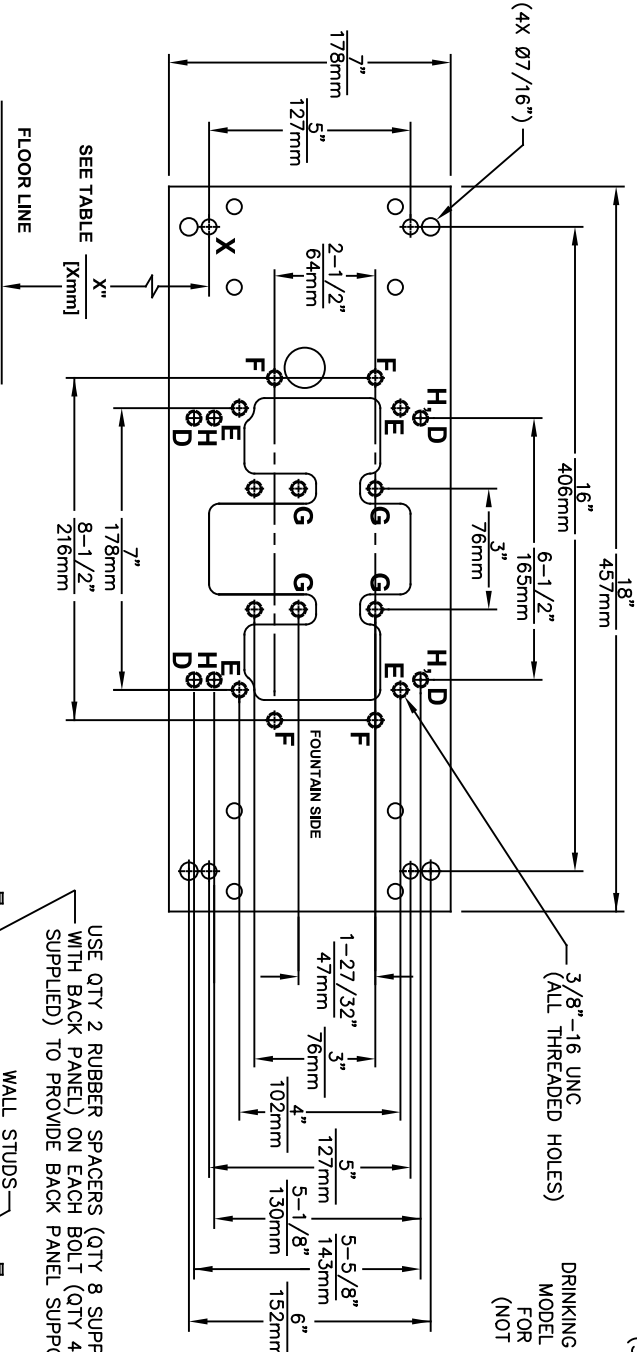
Since 1906

1455 KLEPPE LANE
SPARKS, NEVADA 89431
(775) 359-4712 FAX (775) 359-7424
E-MAIL: HAWS@HAWS.CO.COM
WEBSITE: WWW.HAWS.CO.COM

ECN NO. REVISED PER BY: JG
DRAWN: JG
DATE: 10/03/24
APPROVED: JG

MODEL(S)
67/00

PART NUMBER
0002080016
REVISION
26




DRINKING FOUNTAIN (ONLY) AT 27" ADULT HEIGHT (SEE SPECIFIC MODEL O&M'S FOR OTHER HEIGHTS)			
MODEL	USE BOWL MTG. HOLE PATTERN	USE "X" DIM. BELOW TO POSITION MOUNTING PLATE HOLE "X"	
1001	"G"	25-3/8" [645mm]	
1025	"D"	28-1/8" [714mm]	
1047	"E"	24-3/8" [619mm]	
1105	"H"	34-5/16" [872mm]	
1107	"F"	26-3/16" [665mm]	
1109	"H"	27-5/16" [694mm]	
1109.14	"H"	27-5/16" [694mm]	
1109FR	"H"	27-5/16" [694mm]	
1311	"E"	26-3/4" [679mm]	
WASTE DRIP TRAY (ONLY) AT 27" ADULT HEIGHT			
6468	"G"	25-3/8" [645mm]	
1922	"G"	25-3/8" [645mm]	

6700 MOUNTING PLATE
FOR USE WITH
DRINKING FOUNTAINS
AND WASTE DRIP TRAYS
AT 27" ADULT HEIGHT
(SEE SHEETS 2 - 5 FOR USE WITH
BOTTLE FILLER 1920/1920HO SERIES
AND CHILD HEIGHT APPLICATIONS)

****FINISH WALL OVER MOUNTING PLATE AND BEHIND BACK PANEL. MAKE SURE THAT FINISHED WALL EXTENDS WITHIN THE BRACKET/BOWL MOUNTING HOLES (TO PROVIDE SURFACE AREA FOR RUBBER SPACERS TO CONTACT).**

CAUTION

REGARDING CONCRETE/MASONRY WALL MOUNTING: DO NOT SECURE MOUNTING PLATE TO SAME SIDE OF WALL AS FOUNTAIN. AVOID COMPROMISING INTEGRITY OF WALL WHEN ANCHORING FOUNTAIN. IT IS RECOMMENDED THAT INSTALLER CALL TECHNICAL SUPPORT IF THERE ARE ANY QUESTIONS AS TO HOW TO OBTAIN A PROPER ANCHOR IN CONCRETE/MASONRY WALLS. 1-800-766-5612



Haws®
Since 1906

ECN NO. REVISED PERBY: 6700
DRAWN: JG
DATE: 09/20/23
CHKD: JG
CUL: JG

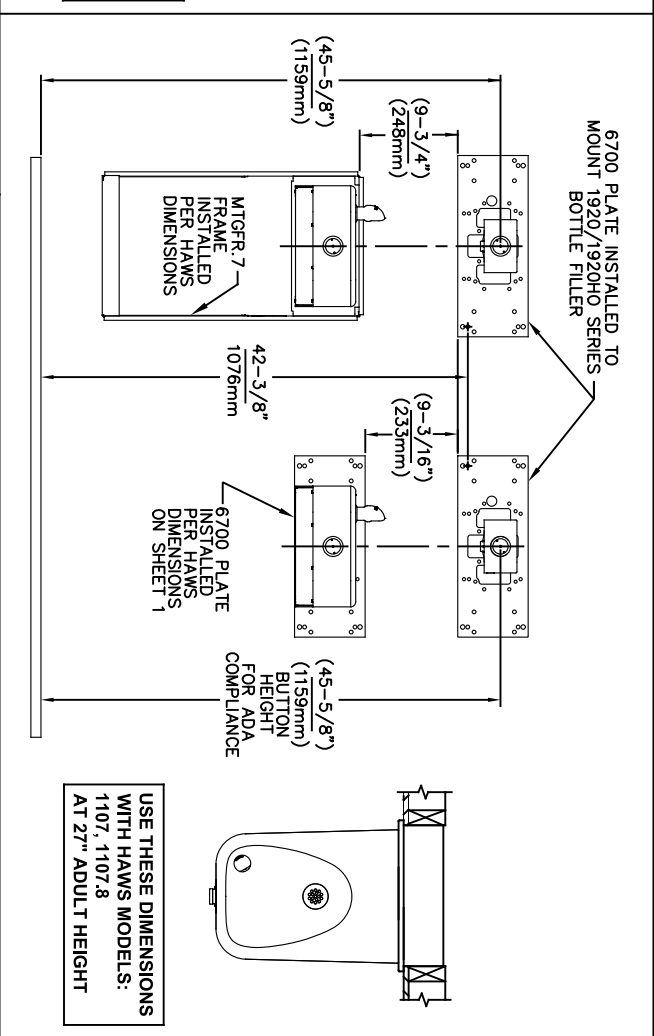
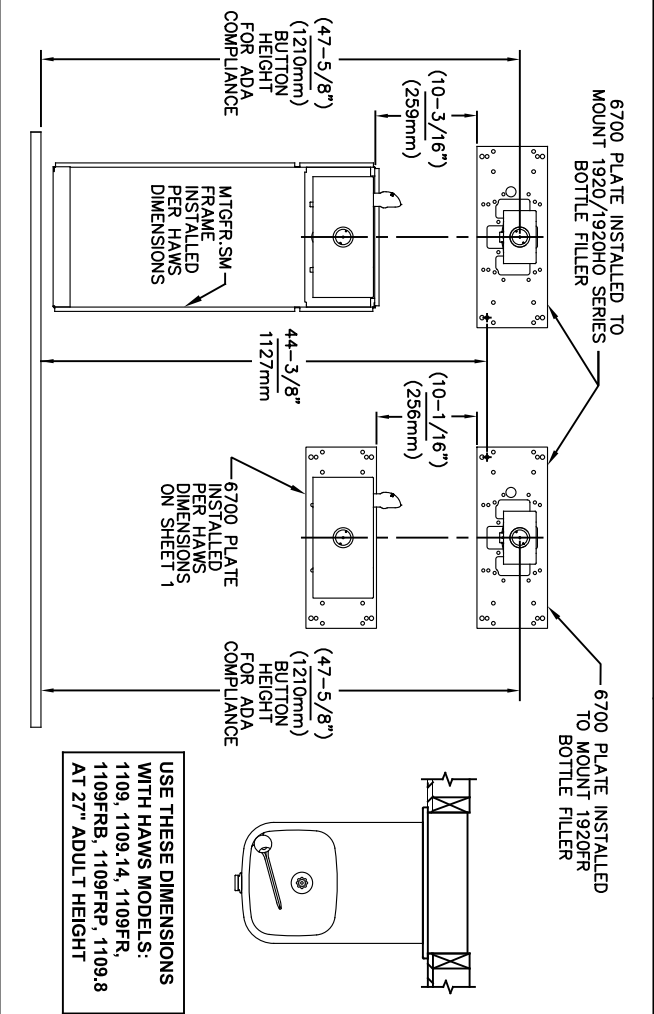
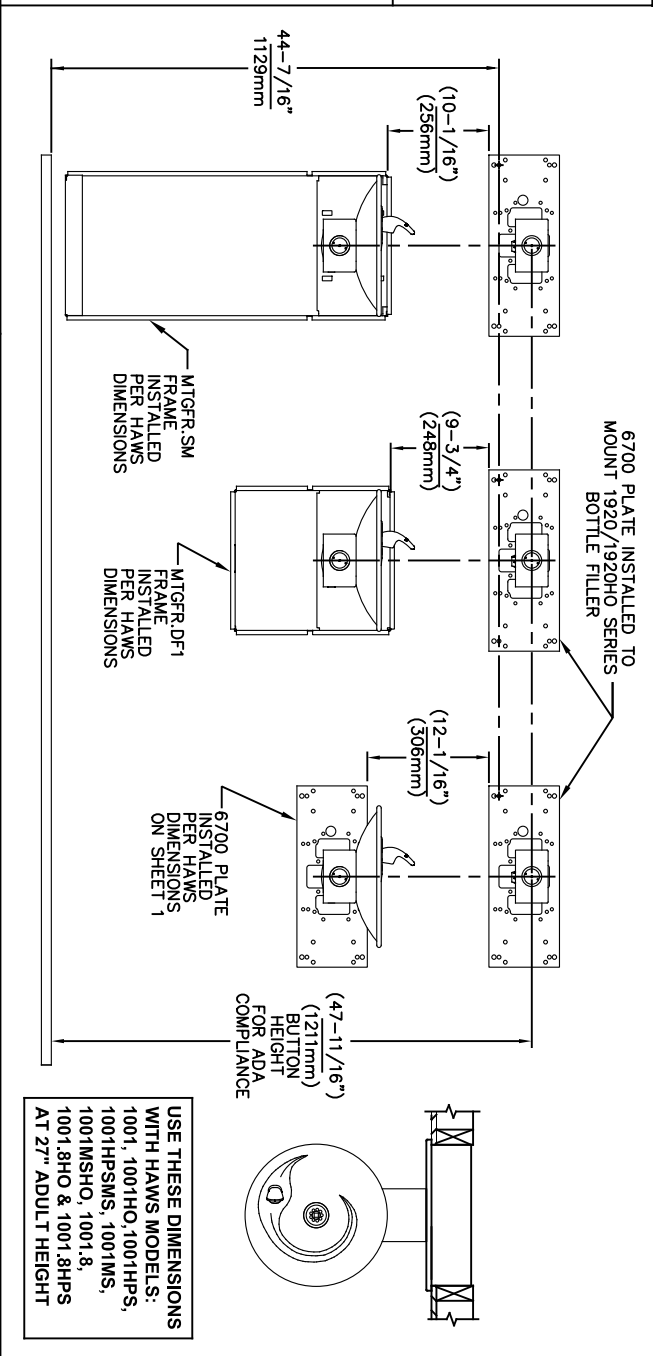
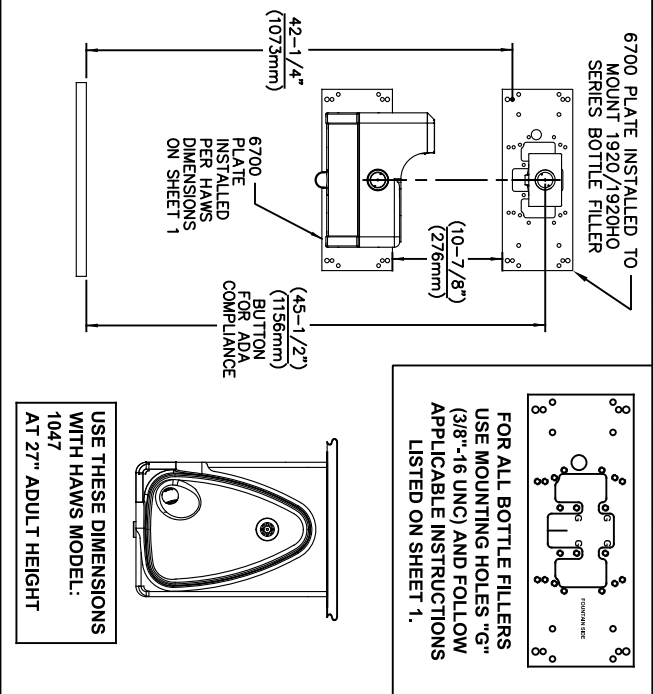
MODEL(S)
6700

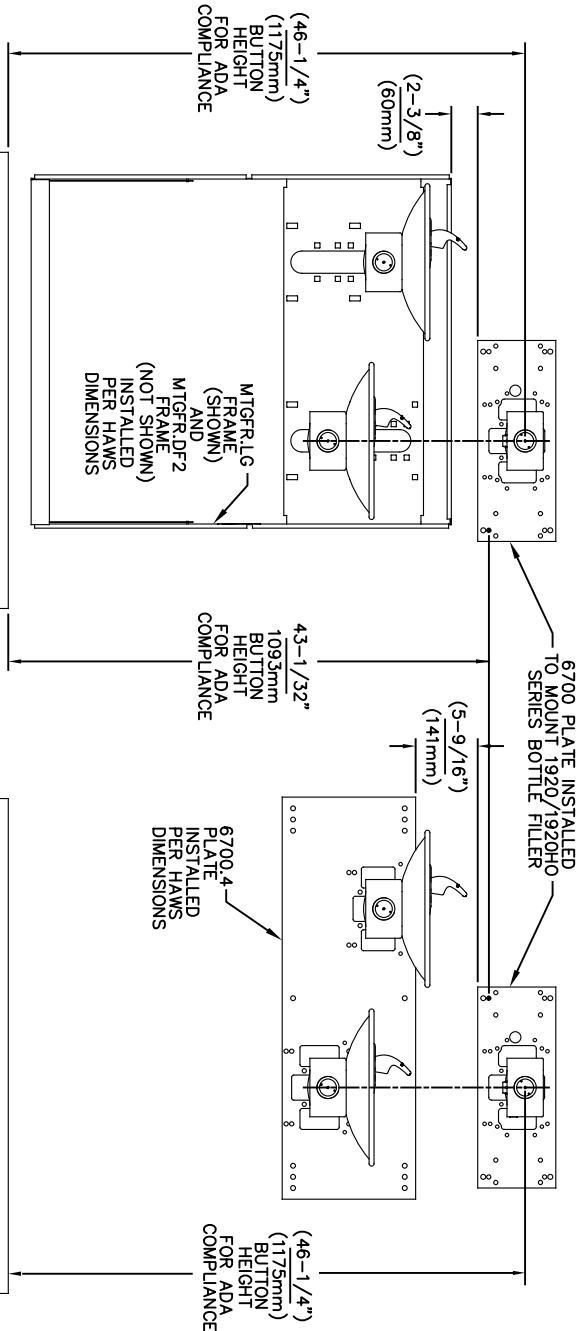
SCALE: N/A
DRAWING TYPE: INSTALLATION
SIZE: A
SHEET: 2 OF 6

1455 KLEPPE LANE
SPARKS, NEVADA 89431
(775) 359-4712 FAX (775) 359-7424
E-MAIL: HAWS@HAWS.CO.COM
WEBSITE: WWW.HAWS.CO.COM

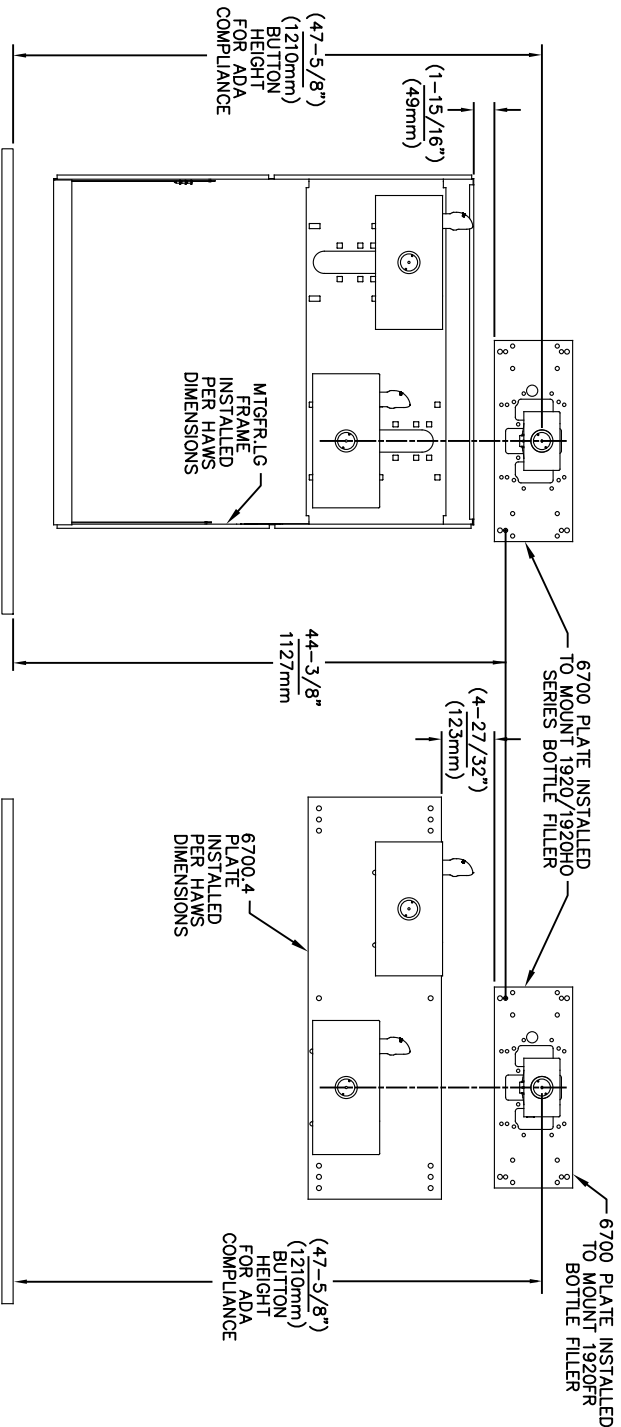
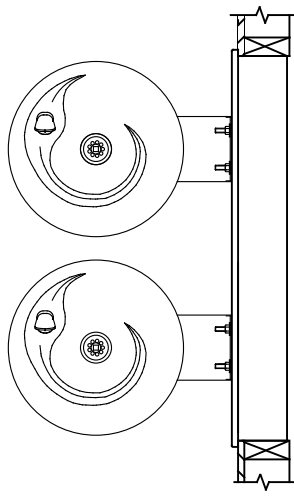
PART NUMBER
0002080016

REVISION
26

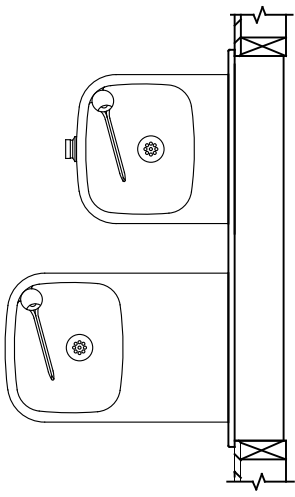




USE THESE MOUNTING DIMENSIONS IF INSTALLING OVER HAWS FOUNTAIN
MODEL: 1011, 1011HO, 1011HO2, 1011HPS, 1011HPSHO, 1011HPSHO2, 1011HPSMS, 1011HMS, 1011MSHO, 1011MSHO2, 1011.8, 1011.8HO, 1011.8HO2 & 1011.8HPSM AT 27" ADULT HEIGHT
INSTALL THE 6700 ABOVE THE FOUNTAIN MOUNTING PLATE OR FRAME AT THE DIMENSION SHOWN FOR CORRECT BACKPANEL SPACING
BACK PANELS FOR BOTTLE FILLERS (NOT SUPPLIED - OPTIONAL) ARE NOT SHOWN FOR CLARITY.




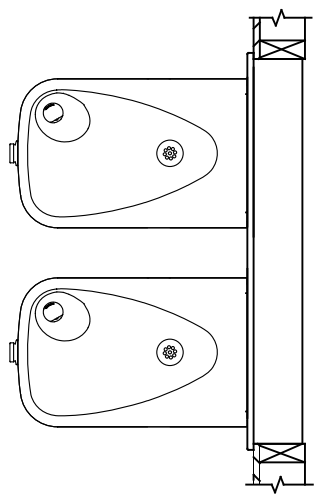
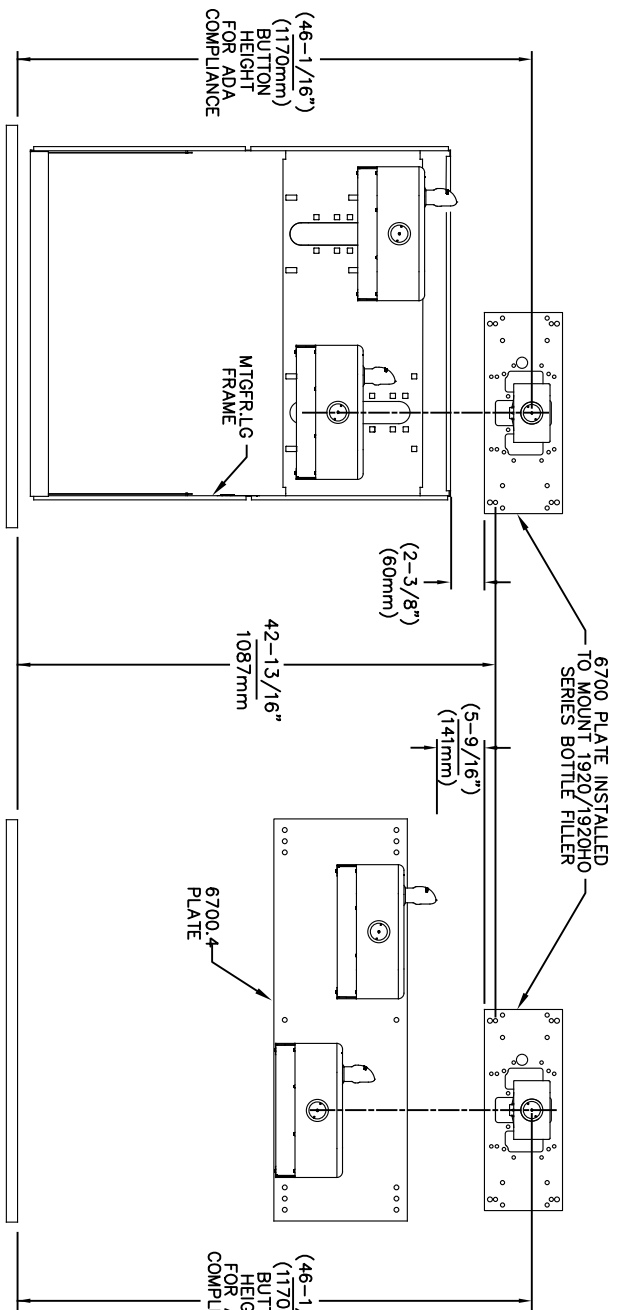
USE THESE MOUNTING DIMENSIONS IF INSTALLING OVER HAWS FOUNTAIN
MODEL: 1119, 1119.14, 1119.14HO, 1119.14HO2, 1119FR, 1119FRB, 1119FRP, 1119HO, 1119HO2 & 1119.8 AT 27" ADULT HEIGHT
INSTALL THE 6700 ABOVE THE FOUNTAIN MOUNTING PLATE OR FRAME AT THE DIMENSION SHOWN FOR CORRECT BACKPANEL SPACING
BACK PANELS FOR BOTTLE FILLERS (NOT SUPPLIED - OPTIONAL) ARE NOT SHOWN FOR CLARITY.



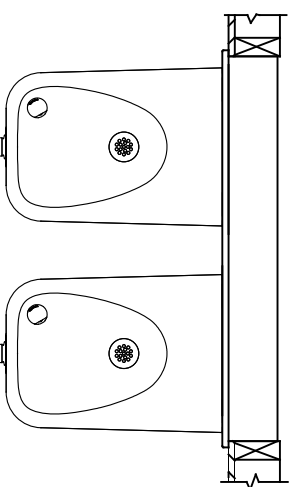
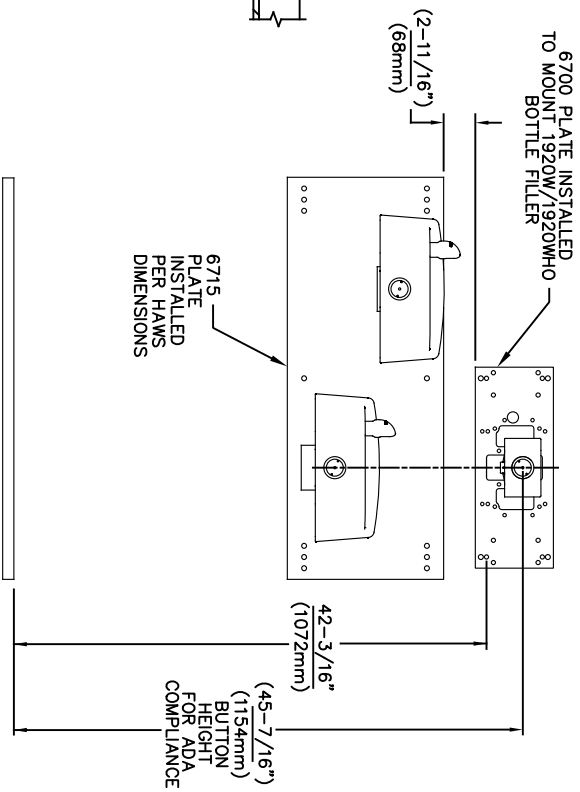
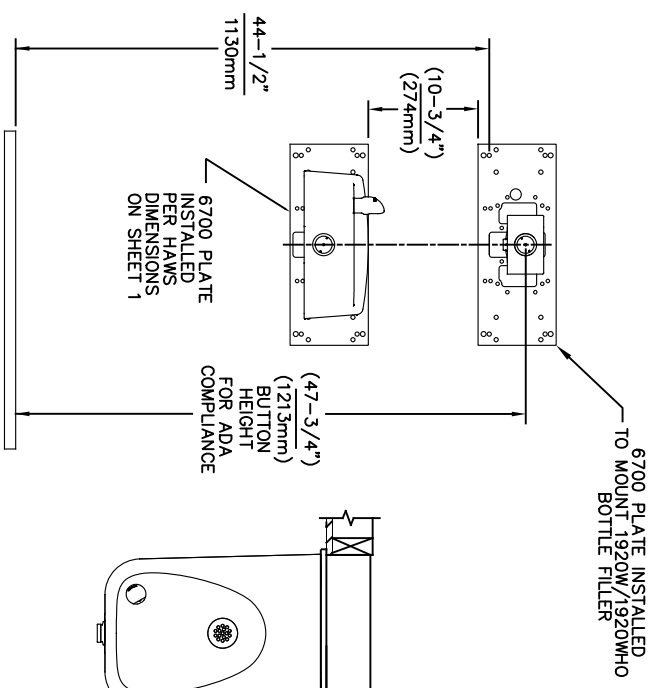
- NOTES:
1. WHEN INSTALLING THIS UNIT, LOCAL, STATE OR FEDERAL CODES SHOULD BE ADHERED TO.
 2. BACK PANELS (OPTIONAL) NOT SHOWN FOR CLARITY.

6700 MOUNTING PLATE
FOR USE WITH BOTTLE FILLER
(SEE SHEET 1 FOR USE WITH
DRINKING FOUNTAINS)

		1456 KLEPPE LANE SPARKS, NEVADA 89431 (775) 359-4712 FAX (775) 359-7424 E-MAIL: HAWS@HAWS.CO.COM WEBSITE: WWW.HAWS.CO.COM	
ECN NO. REVISED PERBY:	MODEL(S)	6700	
5550 ECN: 6148 JG	DATE: 09/14/20 JG	PART NUMBER 0002080016	
APPROVED: FV	DATE: 02/11/25	SCALE: 1:13	DRAWING TYPE: INSTALLATION
SIZE: A		SHEET 4 OF 6	




USE THESE MOUNTING DIMENSIONS IF
INSTALLING OVER HAWS FOUNTAIN
MODEL: 1117, 1117.8
AT 27" ADULT HEIGHT
INSTALL THE 6700 ABOVE THE
FOUNTAIN MOUNTING PLATE OR
FRAME AT THE DIMENSION SHOWN
FOR CORRECT BACKPANEL SPACING
BACK PANELS FOR BOTTLE FILLERS
(NOT SUPPLIED - OPTIONAL) ARE NOT
SHOWN FOR CLARITY.



USE THESE MOUNTING DIMENSIONS IF
INSTALLING OVER HAWS FOUNTAIN
MODEL: 1311, 1501
AT 27" ADULT HEIGHT
INSTALL THE 6700 ABOVE THE
FOUNTAIN MOUNTING PLATE AT
THE DIMENSION SHOWN FOR CORRECT
BACKPANEL SPACING (IF APPLICABLE).
BACK PANEL FOR BOTTLE FILLER
(NOT SUPPLIED - OPTIONAL) IS NOT
SHOWN FOR CLARITY.

- NOTES:
1. WHEN INSTALLING THIS UNIT, LOCAL, STATE OR FEDERAL CODES SHOULD BE ADHERED TO.
 2. BACK PANELS (OPTIONAL) NOT SHOWN FOR CLARITY.

6700 MOUNTING PLATE
FOR USE WITH BOTTLE FILLER
(SEE SHEET 1 FOR USE WITH
DRINKING FOUNTAINS)

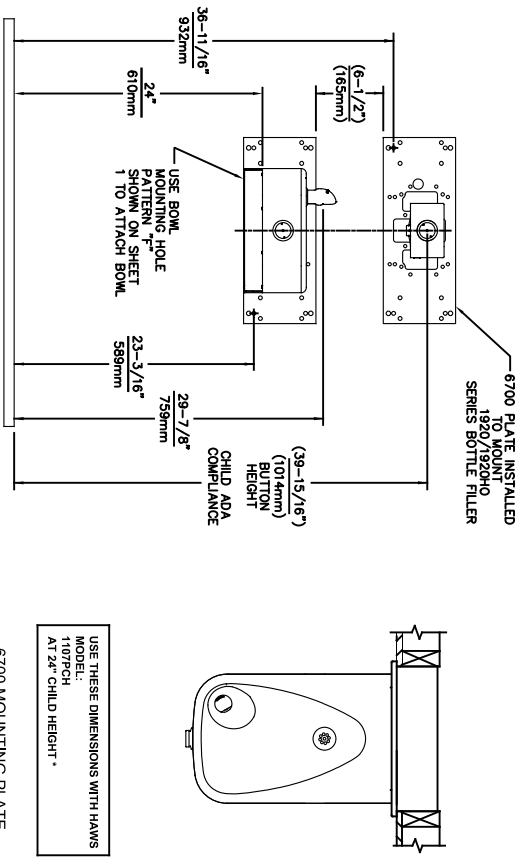


Since 1906

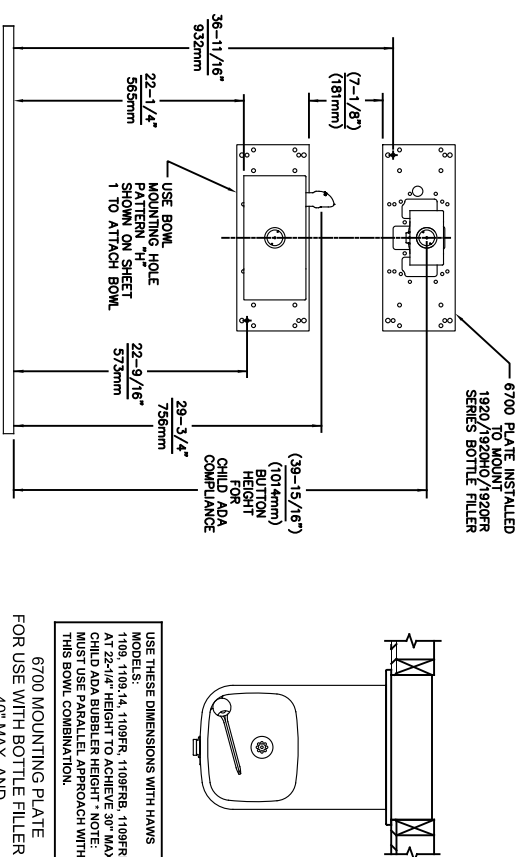
1456 KLEPPE LANE
SPARKS, NEVADA 89431
(775) 359-4712 FAX (775) 359-7424
E-MAIL: HAWS@HAWS.CO.COM
WEBSITE: WWW.HAWS.CO.COM

ECN NO. 5550
DRAWN: FV
APPROVED: FV
REVISED PERBY: JG
DATE: 05/14/20
CHKD: JG
MODEL(S) 6700
PART NUMBER 0002080016
REVISION 26

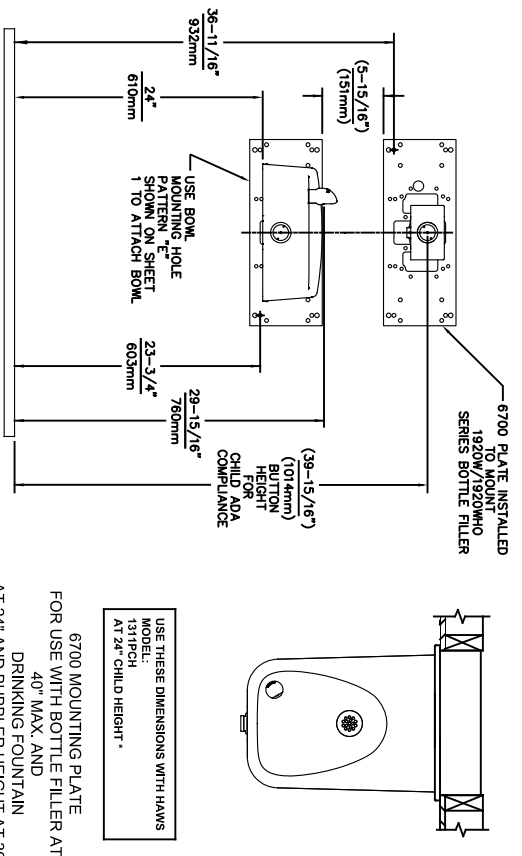
SCALE: 1:13
DRAWING TYPE: INSTALLATION
SHEET 5 OF 6



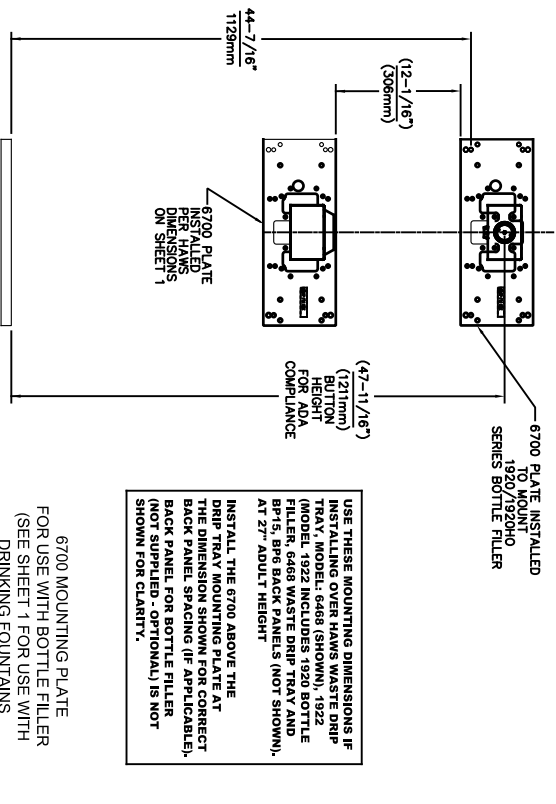
6700 MOUNTING PLATE
FOR USE WITH BOTTLE FILLER AT
40\" MAX. AND
DRINKING FOUNTAIN
AT 24\" AND BUBBLER HEIGHT AT 30\"
MAX. FOR CHILD ADA HEIGHT
(SEE SHEETS 1 & 2 FOR USE WITH
DRINKING FOUNTAIN AT 27\" ADULT
HEIGHT DIMENSIONS)




6700 MOUNTING PLATE
FOR USE WITH BOTTLE FILLER AT
40\" MAX. AND
DRINKING FOUNTAIN
BUBBLER HEIGHT AT 30\" MAX.
FOR CHILD ADA HEIGHT
MUST USE PARALLEL APPROACH
WITH THIS BOWL COMBINATION
(SEE SHEETS 1 & 2 FOR USE WITH
DRINKING FOUNTAIN AT 27\" ADULT
HEIGHT DIMENSIONS)



6700 MOUNTING PLATE
FOR USE WITH BOTTLE FILLER AT
40\" MAX. AND
DRINKING FOUNTAIN
AT 24\" AND BUBBLER HEIGHT AT 30\"
MAX. FOR CHILD ADA HEIGHT
(SEE SHEETS 1 & 4 FOR USE WITH
DRINKING FOUNTAIN AT 27\" ADULT
HEIGHT DIMENSIONS)



6700 MOUNTING PLATE
FOR USE WITH BOTTLE FILLER
(SEE SHEET 1 FOR USE WITH
DRINKING FOUNTAINS
AND WASTE DRIP TRAY)



1456 KLEPPE LANE
SPARKS, NEVADA 89431
(775) 359-4712 FAX (775) 359-7424
E-MAIL: HAWS@HAWS.CO.COM
WEBSITE: WWW.HAWS.CO.COM

ECN NO. REVISED PERBY:	MODEL(S)
5893 1 ECN: 6148 1 JG	6700
DRAWN: DATE: CHKD:	
FV 07/26/23 JG	
APPROVED: DATE:	
FV 02/11/25	
SCALE: 1:13	DRAWING TYPE:
INSTALLATION	SHEET 6 OF 6