

## FEATURES & BENEFITS

---

### CONSTRUCTION

Constructed of see-through acrylic, this canister style sand and debris trap is used directly under the drain on models 3500 and 3511, and allows easy access and maintenance.

### OPTIONS

---

For more information, visit [www.hawsc.com](http://www.hawsc.com) or call (888) 640-4297.



## SPECIFICATIONS

---

Model 6635 sand trap shall include a see through acrylic canister with lifting handle for 3500 and 3511 series fountains. (This option cannot be used in conjunction with the 6250LF bib faucet on 3511).

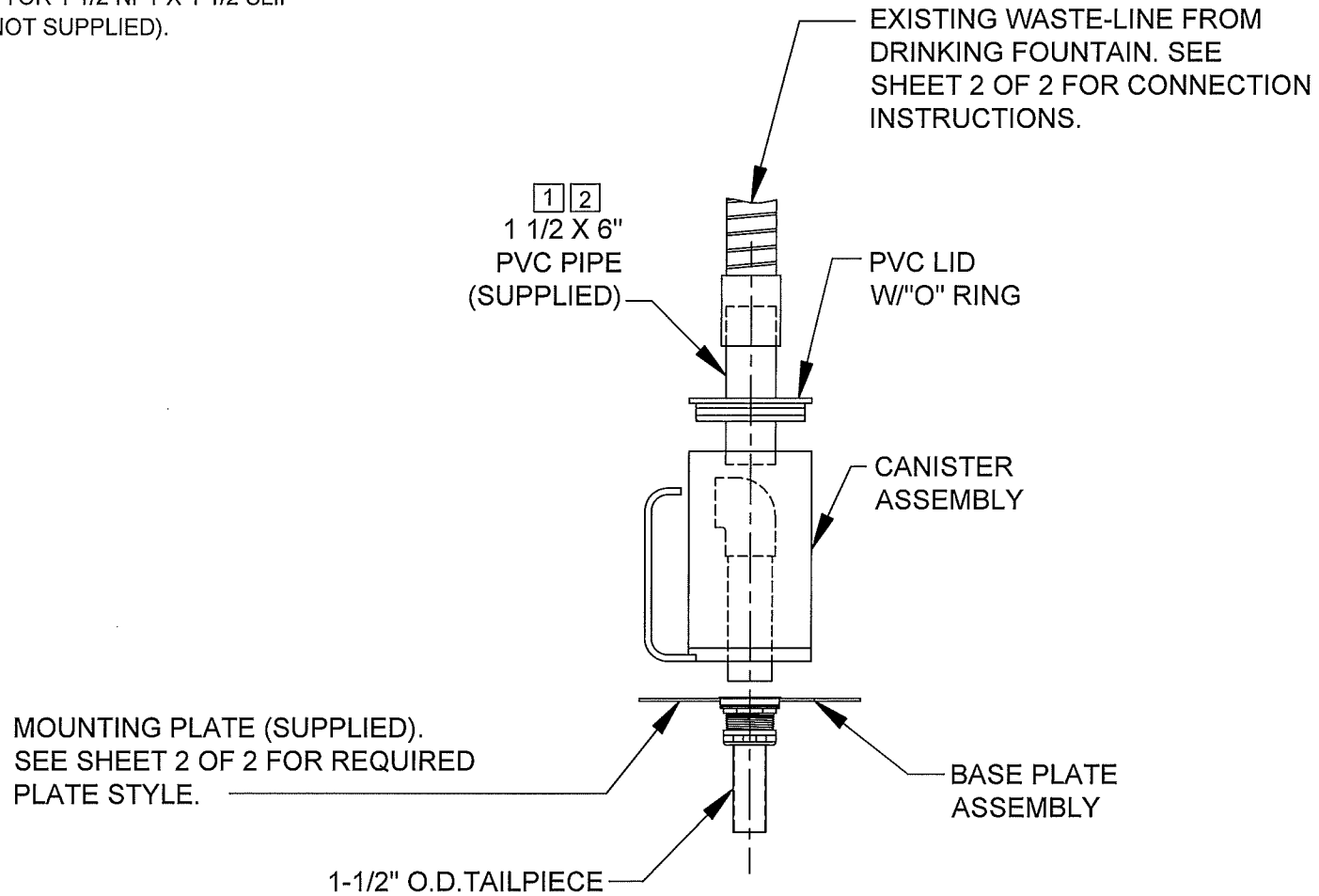
## APPLICATIONS

---


Specifically, this sand and debris trap is intended for models 3511 or 3500 when there is a concern for blockage of the waste lines.

**NOTES:**

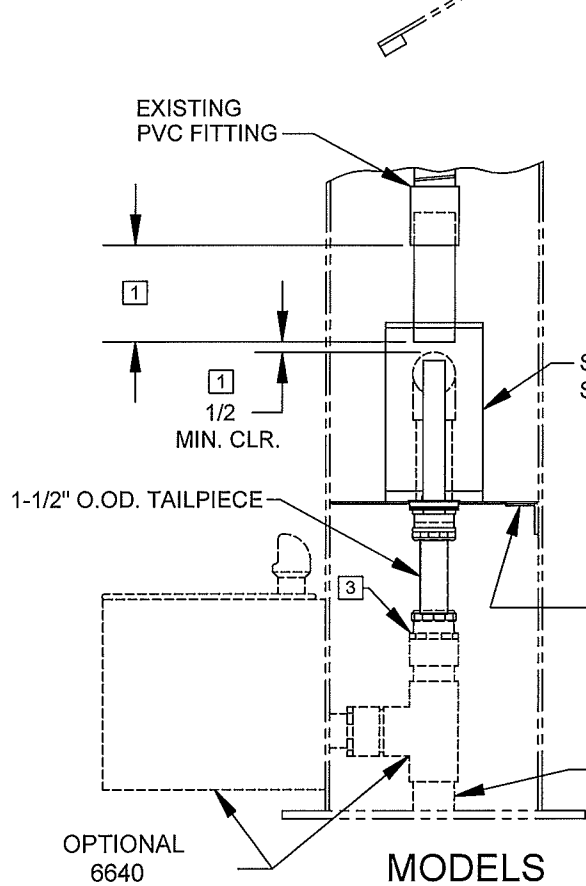
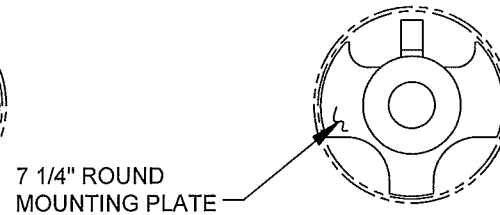
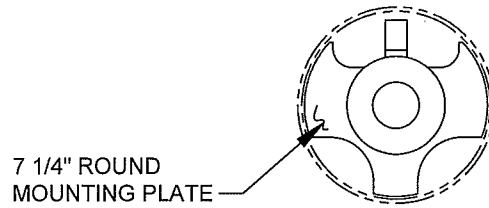
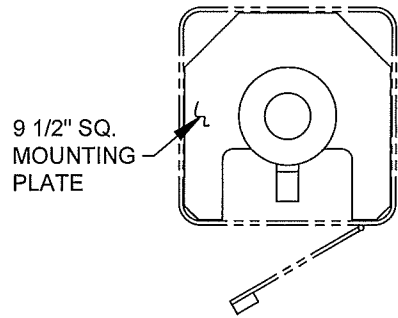
- 1 CUSTOMER TO CUT 1 1/2" X 6" PVC PIPE (SUPPLIED) TO REQUIRED LENGTH.
- 2 CUSTOMER TO ATTACH PVC PIPE TO EXISTING PVC FITTING USING APPROPRIATE PVC GLUE.
- 3 PVC SCH.40 MALE ADAPTOR 1 1/2 NPT X 1 1/2 SLIP WASTE CONNECTION (NOT SUPPLIED).



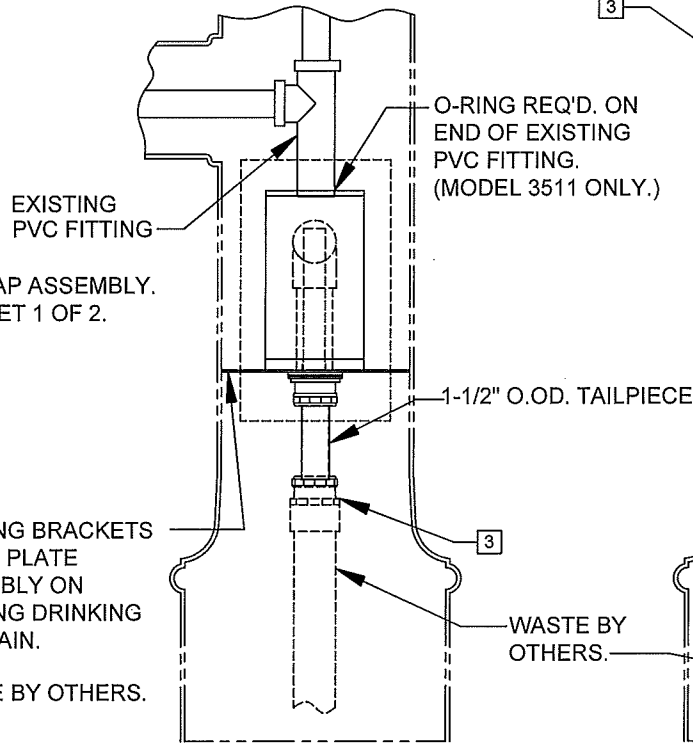
**SANDTRAP ASSEMBLY  
DETAILS**

			1455 KLEPPE LANE SPARKS, NEVADA 89431 (775) 359-4712 FAX (755) 359-7424 E-MAIL: HAWS@HAWSO.COM WEBSITE: WWW.HAWSO.COM	
			ECN NO. REVISED PER BY: ECN: 4837 HM	MODEL(S) 6635
DRAWN: PM	DATE: 03/99	CHKD.: [Signature]	DRAWING NO. 14050C00	REV 4
APPROVED: [Signature]	DATE: 7/14/13	SCALE: 1:7	DRAWING TYPE: INSTALLATION	SIZE: A SHEET 1 OF 2

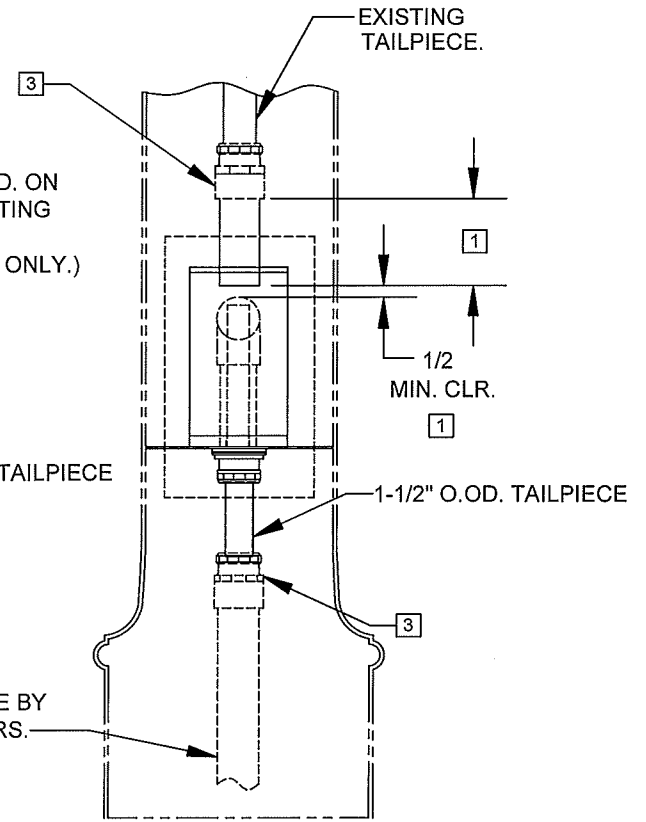
### PLATE STYLES



**MODELS**  
3500 / 3500D  
3501/ 3502



**MODELS**  
3511



**MODELS**  
3510

### WASTE CONNECTION DETAILS



1455 KLEPPE LANE  
SPARKS, NEVADA 89431  
(775) 359-4712 FAX (775) 359-7424  
E-MAIL: HAWS@HAWSCO.COM  
WEBSITE: WWW.HAWSCO.COM

ECN NO. REVISED PER BY:	MODEL(S)	PART NUMBER
ECN: 4837 HM		0002080008
DRAWN: DATE: CHK'D:		DRAWING NO. REV
PM 03/99		14050C00 4
APPROVED: DATE:		SCALE: 1:8 DRAWING TYPE: INSTALLATION SIZE: A SHEET 2 OF 2