

## FEATURES & BENEFITS

### CONSTRUCTION

Rugged 18-gauge Type 304 Stainless Steel with a satin finish bowl, 14 gauge Type 304 Stainless Steel bottle filler that resists stains and corrosion, soft rounded corners, stainless steel satin finish back panels, vandal-resistant bottom plate, and 1-1/4" integral trap.

### BOTTLE FILLER

Vandal-resistant, 14-gauge Type 304 stainless steel bottle filler housing with push button operation and 1 gpm (3.78 L) laminar flow.

### BUBBLER HEAD

Polished chrome-plated brass bubbler head with integral 11/16" dia. basin shank and stainless anti-rotation roll pin for vandal resistance strength. Shielded, angled stream opening provides a steady, sanitary source of drinking water at .45 gpm.

### FOUNTAIN VALVES

The push-button activated valves have all stainless steel bodies, with chrome plated brass push button assemblies which allow for front access to water stream adjustment, water control cartridge, and water supply strainer replacement without having to go through the bottom plate. Operating pressure range of 30 to 90 psi (2.1 to 6.2 bar).

### VANDAL RESISTANT

The bubbler head, push buttons, drain strainer and bottom plates are locked in place, discouraging unwanted vandal tampering.

### INTEGRATED TRAP

Brass 1-1/4" NPT trap is internally mounted for easy installation and access.

## OPTIONS

- Water Filter: Model 6480 filter kit with 3000 gallon carbon block filter, filter head, and mounting bracket.
- Mounting Plate: Model 6700, in-wall mounting plate for model 1920 and/or 1105.
- Mounting Plate: Model 6700R, on-wall mounting plate for model 1920.
- Support Frame: Model 6800 In-wall floor mounted fixture support legs, welded steel 4-bolt floor flanges, and supplied with 'U' bolts and hardware.
- Remote Drinking Fountain Water Chiller: Model HCR8, 8 gph (30.3 L) remote water chiller provides instantaneous cooling to meet a continuous demand for chilled water.

For more information, visit [www.hawsco.com](http://www.hawsco.com) or call (888) 640-4297.



## SPECIFICATIONS

### 1105 / BP3 / 1920 / BP15

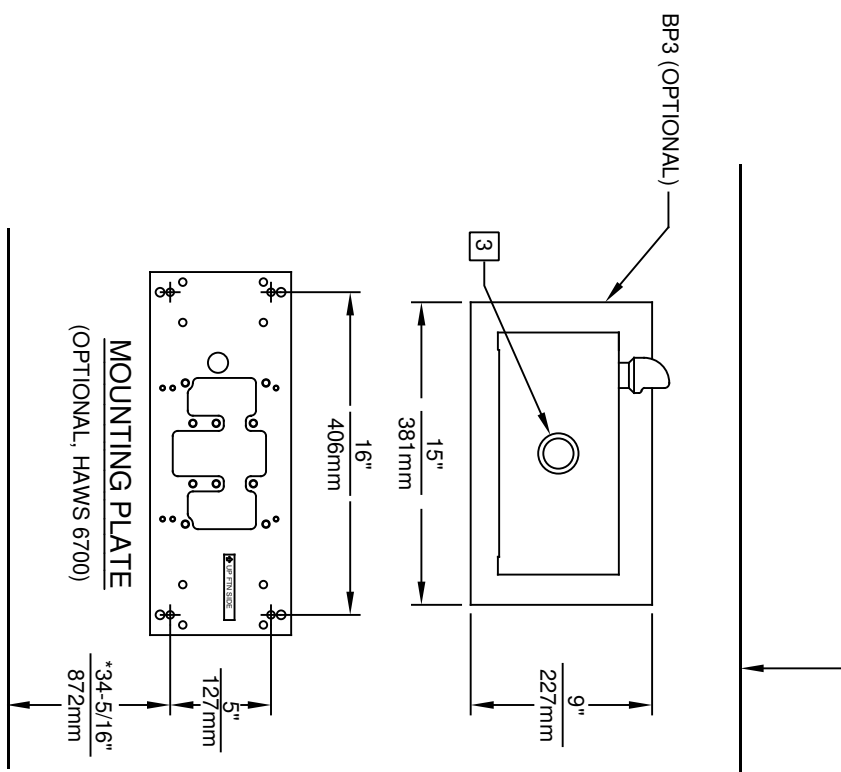
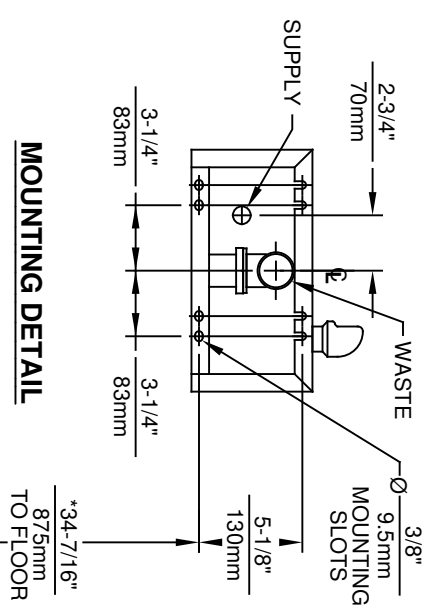
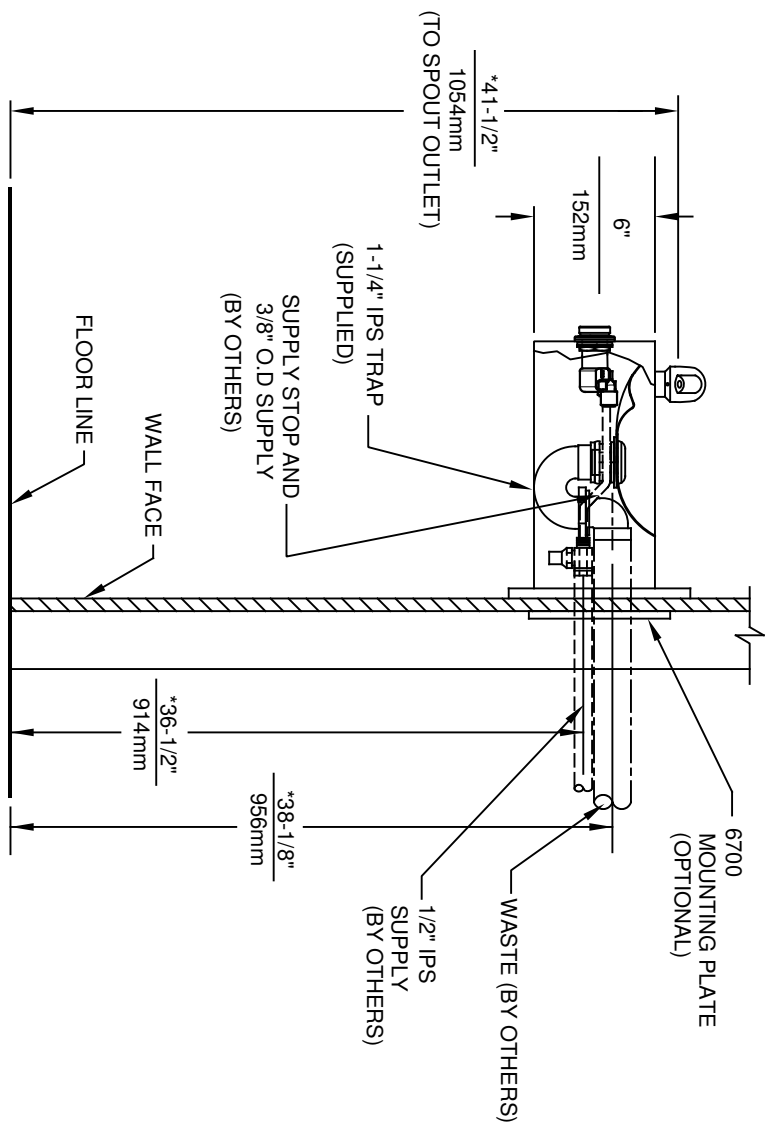
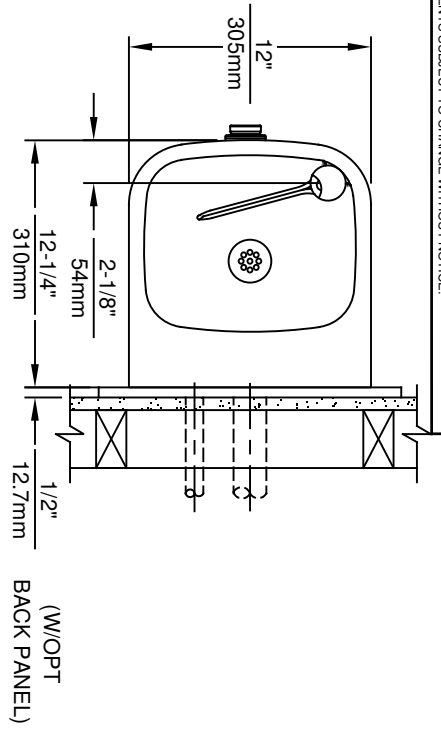
Order these items to make up the Model 1105-1920 fountain with stainless steel back panel, bottle filler with stainless steel back plate, and drip tray drain.

## APPLICATIONS

Model 1105-1920 wall-mounted vandal-resistant drinking fountain and bottle filler shall include an 18-gauge Type 304 Stainless Steel satin finish basin, 14 gauge Type 304 Stainless Steel bottle filler bracket, 100% lead-free waterways, vandal-resistant push-button operated stainless steel valves with front-accessible cartridge and flow adjustment, polished chrome-plated brass vandal-resistant bubbler head, 1 gpm (3.78 L) laminar flow bottle filler, polished chrome-plated brass vandal-resistant waste strainer, stainless steel back panels, vandal-resistant bottom plates, and 1-1/4" NPT trap. Manufactured to be lead-free by all known definitions including NSF/ ANSI/CAN 61-Section 9, NSF/ANSI/ CAN 372, California Proposition 65, and the Federal Safe Drinking Water Act. Product is compliant to California Health and Safety Code 116875 (AB 1953-2006), and 116876 (AB 100) "NSF/ANSI/CAN 61: Q ≤ 1".

**The bottle filler requires a mounting plate; either the Haws model 6700 in-wall or the 6700R on-wall support plate.**

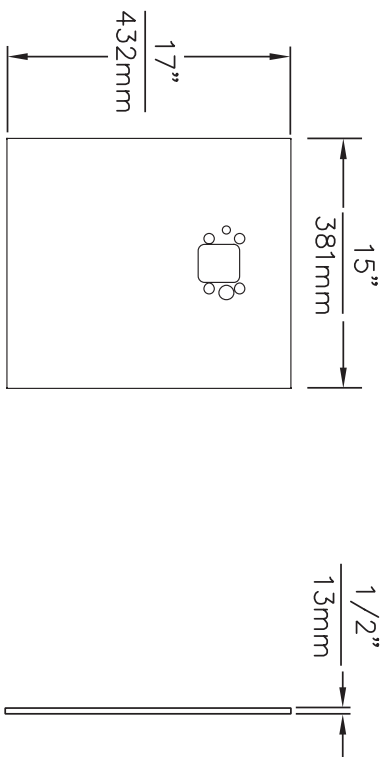




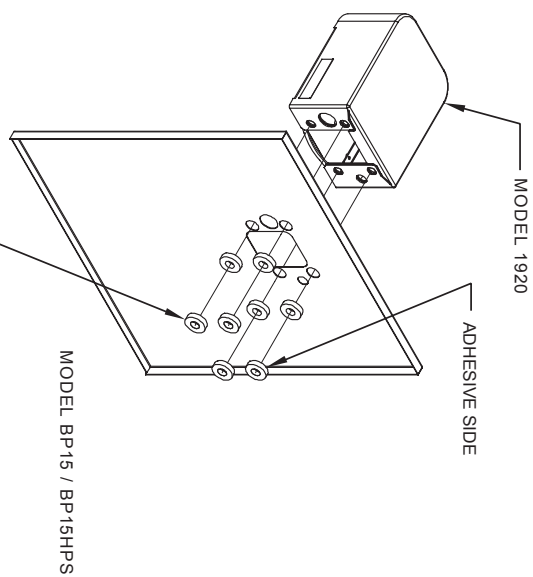
**NOTES:**

1. HOLD ROUGH-IN DIMENSIONS ± 1/4" (6.4mm).
2. WHEN INSTALLING THIS UNIT LOCAL, STATE OR FEDERAL CODES SHOULD BE ADHERED TO. FOR INSTALLATION HEIGHTS OTHER THAN SHOWN, DIMENSIONS MARKED (\*) MUST BE ADJUSTED ACCORDINGLY.
3. REFER TO 5874 SERIES OPERATION AND MAINTENANCE MANUAL FOR PUSH BUTTON AND VALVE INSTALLATION/MAINTENANCE INSTRUCTIONS.

		<b>HAWS</b>	
ECN NO. REVISED PER BY:	MODEL(S)	1456 KLEPPE LANE	
ECN: 5215	JP	SPARKS, NEVADA 89431	
DATE: 12/97	CHKD: GC	(775) 359-4712 FAX (775) 359-7424	
APPROVED: FV	DATE: 11/22/17	E-MAIL: HAWS@HAWS.CO.COM	
SCALE: NA	DRAWING TYPE:	WEBSITE: WWW.HAWS.CO.COM	
INSTALLATION:	SIZE: A	PART NUMBER	
1105		0002076524.D	
		REVISION: 18	



**MODEL BP15 / BP15HPS**



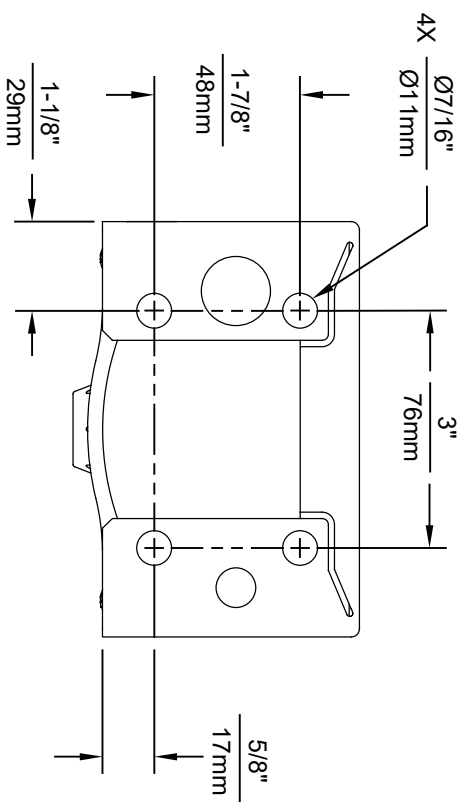
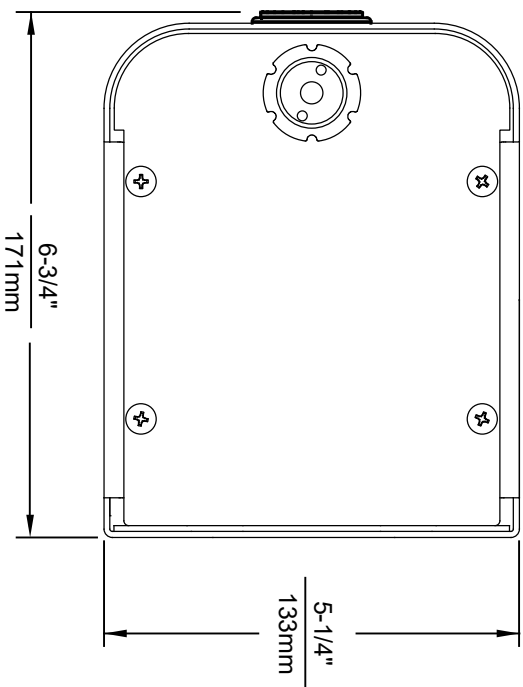
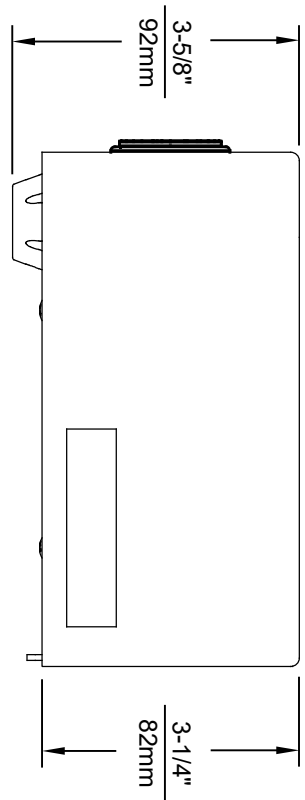
8 SPACERS (2 PER MOUNTING BOLT IF THE MOUNTING PLATE IS INSTALLED BEHIND THE FINISHED WALL. USE 1 SPACER PER BOLT FOR RETROFITS WHERE THE MOUNTING PLATE IS INSTALLED IN FRONT OF THE FINISHED WALL)

**INSTALLATION OVER SINGLE FOUNTAIN**  
SHOWN FROM REAR

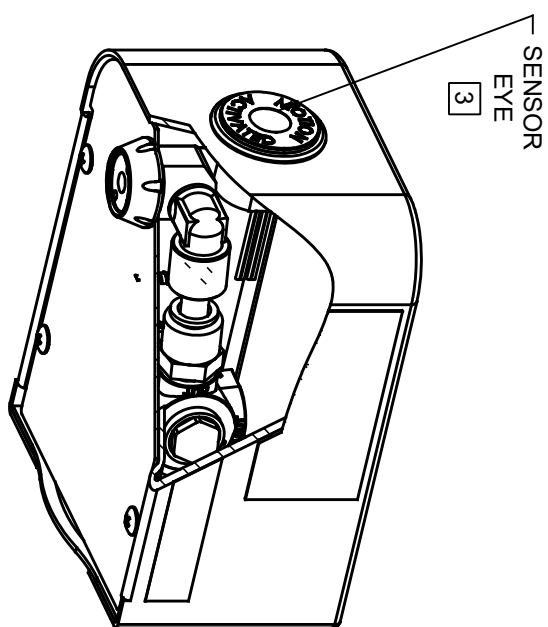
- NOTES:  
1. WHEN INSTALLING THIS UNIT, LOCAL, STATE OR FEDERAL CODES SHOULD BE ADHERED TO.

©2017 Haws Corporation - All Rights Reserved. HAWS® and other trademarks used in these materials are the exclusive property of Haws Corporation.

		1455 KLEPPELANE SPARKS, NEVADA 89431 (775) 359-4712 FAX (775) 359-7424 E-MAIL: HAWS@HAWSCO.COM WEBSITE: WWW.HAWSCO.COM	
ECNO	REVISED PER:	MODEL(S)	PART NUMBER
DRAWN:	GC:	MODEL 1109 AND 1109.14 WITH	1109-20
GC	DATE: 09/31/17	MODEL 1920 BOTTLE FILLER	REVISION DA.1
APPROVED:	DATE:	SCALE: 1:1	DRAWING TYPE: INSTALLATION
		SHEET: A	SHEET 2 OF 2



1920HO SERIES MOUNTING HOLE LOCATIONS  
(3/8" - 16 UNC MOUNTING HARDWARE NOT SUPPLIED)



NOTES:

1. SEE SEPARATE INSTALLATION DRAWINGS FOR MOUNTING PLATES AND BACKPANELS
2. WHEN INSTALLING THIS UNIT, LOCAL, STATE OR FEDERAL CODES SHOULD BE ADHERED TO FOR INSTALLATION LOCATIONS, WASTE AND SUPPLY REQUIREMENTS OTHER THAN SHOWN.
3. REFER TO 1RKHO.H OPERATION & MAINTENANCE INSTRUCTIONS FOR SENSOR SETUP.



1455 KLEPPE LANE  
SPARKS, NEVADA 89431  
(775) 359-4712 FAX (775) 359-7424  
E-MAIL: HAWS@HAWS.CO.COM  
WEBSITE: WWW.HAWS.CO.COM

EQ. NO.	REVISED PER BY	MODEL(S)	PART NUMBER
5274	EQ. 5681 B.M.	1920HO/1920HPSHO/1920WHO	0510001063.D
DRAWN BY	DATE	SCALE	REVISION
B.M.	05/19/21	N/A	4
APPROVED	DATE	DRAWING TYPE	SHEET 1 OF 6
B.M.	05/19/21	INSTALLATION	