

PARTS BREAKDOWN

IMPORTANT: UNITS MUST BE FULLY TESTED AND CHECKED FOR ANSI COMPLIANCE USING ENCLOSED CHECKLIST AFTER UPGRADING THE INSTALLATION.

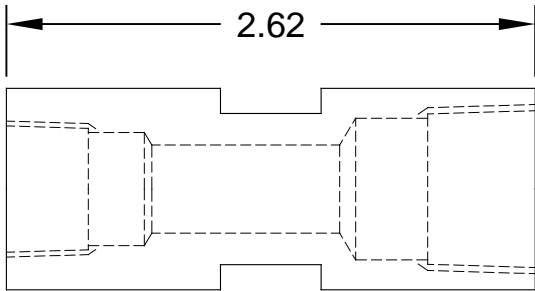
* NOTE CORRESPONDING LETTERS ON INSTALLATION DRAWING.

PARTS NOT SHOWN BUT SUPPLIED

- AXION SHOWER HEAD & STREET ELBOW
- AXION EYE/FACE WASH ASSEMBLY
- MEASURING TAPE
- ** - EYEWASH GAUGE
- ANSI MIN. PERFORMANCE CHECKLIST

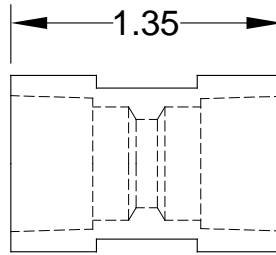
** NOTE: IF PRESENT, REMOVE PAPER-BACKING PRIOR TO USE.

OVERLAY ACTUAL ADAPTERS ON FULL SCALE OUTLINES TO ASSIST WITH ADAPTER IDENTIFICATION PROCESS



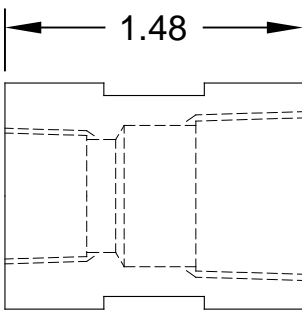
3/8" NPT (F) X 1/2" NPT (F)

(E) *



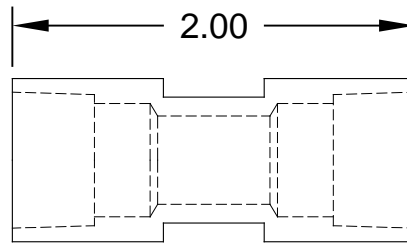
3/8" X 3/8" NPT (F)

(A) *



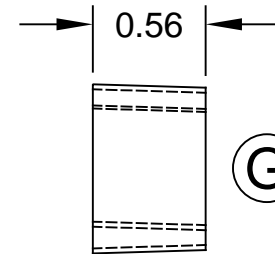
3/8" NPT (F) X 1/2" NPT (F)

(F) *



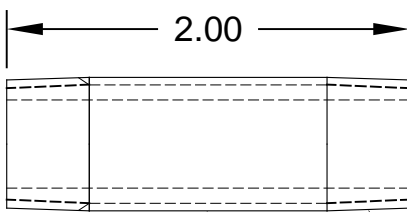
3/8" X 3/8" NPT (F)

(B) *



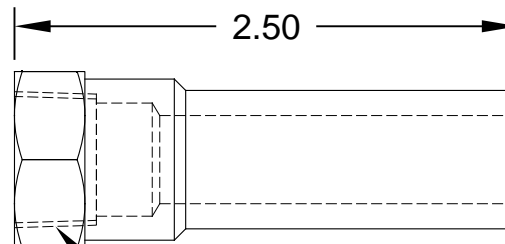
1/2" NPT (M) X 3/8" NPT (F)
(NOTE: IF PRESENT, REMOVE COVER PRIOR TO USE)

(G) *



3/8" NPSM 2X 3/8" NPT (M)

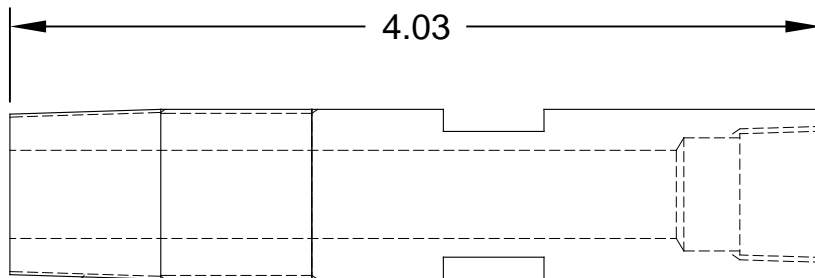
(C) *



3/8" NPT (F)

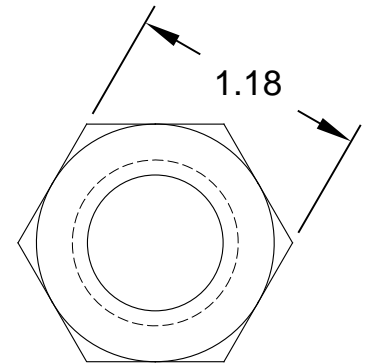
1/4" NPSM (F)

(H) *



1/2" NPT (M) 1/2" NPSM

(D) *



1/2" NPS NUT

WHEN ORDERING PARTS PLEASE SPECIFY MODEL NUMBER.



Haws®

1455 KLEPPE LANE
SPARKS, NEVADA 89431
(775) 359-4712 FAX (775) 359-7424
E-MAIL: HAWS@HAWS.CO.COM
WEBSITE: WWW.HAWS.CO.COM

ECN NO. 4856	REVISED PER ECN: 5507	BY FV
DRAWN H. MERRITT	DATE 9/9/13	CHKD
APPROVED JL	DATE 01/20/20	

MODEL(S) AX14 & AX14S	PART NUMBER 0002080248
SCALE: 1:1	DRAWING TYPE: PARTS BREAKDOWN
SIZE: A	SHEET 1 OF 1

DRAWING NO. 16296A	REV 2
-----------------------	----------