

FEATURES & BENEFITS

CONSTRUCTION

One-piece drinking fountains with low-profile design made of 14 gauge Type 304 stainless steel with 1/4" (.6 cm) thick stainless back plates welded in, and vandal resistant stainless bottom plates.

BOTTLE FILLER

Vandal-resistant, 14-gauge Type 304 stainless steel bottle filler housing with touchless operation and 1 gpm (3.78 L) laminar flow.

BUBBLER HEADS

Polished chrome-plated brass bubbler heads with integral 11/16" dia. basin shank and stainless anti-rotation roll pin for vandal resistance strength. Shielded, angled stream opening provides a steady, sanitary source of drinking water at .45 gpm.

FOUNTAIN VALVES

Fountain incorporates touchless sensor operated stainless steel solenoid valves controlled by a transformer for hands-free operation. A pressure regulator is used to adjust the bubbler flow according to incoming water pressures.

VANDAL RESISTANT

The bubbler heads, sensors, drain strainers and bottom plates are locked in place, discouraging unwanted vandal tampering, and 30-second obstruction time-out to reduce tampering of sensors.

ADA COMPLIANCE

ADA-compliant bottle filling station and dual-height high low drinking fountain required for wheel chair use, and for the standing person.

INTEGRATED TRAP

All cast brass 1-1/4" NPT adjustable traps completely concealed inside bottom plates for easy installation and lack of unwanted access.

OPTIONS

- Mounting Plate: Model 6700, in-wall mounting plate for model 1920HO.
- Mounting Plate: Model 6700R, on-wall mounting plate for model 1920HO.
- Mounting Plate: Model 6700.4, in-wall mounting plate for model 1117LN.
- Support Frame: Model 6800 In-wall floor mounted fixture support legs, welded steel 4-bolt floor flanges, and supplied with 'U' bolts and hardware.

For more information, visit www.hawsco.com or call (888) 640-4297.



REQUIRED MODELS

1117LNHO2 / 1920HO / BP32

Order these items to make up Model 1117LNHO2-1920HO dual fountain, stainless steel touchless bottle filler and stainless steel back panels shown above.

FOR INDOOR USE ONLY

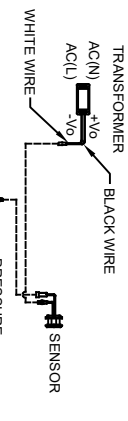
SPECIFICATIONS

Model 1117LNHO2-1920HO low profile vandal-resistant wall mounted ADA push button/motion-activated drinking fountain and bottle filler shall include dual 14 gauge Type 304 Stainless Steel satin finish basins with integral 1/4" (.6 cm) thick stainless steel back plates, sensor operated stainless steel solenoid valves with 30-second obstruction time-out controlled by a transformer, in-line strainer and flow adjustment provide 100% lead free waterways, polished chrome plated brass vandal-resistant bubbler heads, 1 gpm (3.78 L) laminar flow bottle filler, polished chrome-plated brass vandal-resistant waste strainers, vandal-resistant bottom plates, stainless steel satin finish back panels, and 1-1/4" NPT concealed all cast-brass traps. The patented design allows the unit to be mounted to meet ADA or Child ADA specifications. Manufactured to be lead-free by all known definitions including NSF/ANSI/CAN 61-Section 9, NSF/ANSI/ CAN 372, California Proposition 65, and the Federal Safe Drinking Water Act. Product is compliant to California Health and Safety Code 116875 (AB 1953-2006), and 116876 (AB 100) "NSF/ANSI/CAN 61: Q ≤ 1".

The bottle filler requires a mounting plate; either the Haws model 6700 in-wall or the 6700R on-wall support plate.



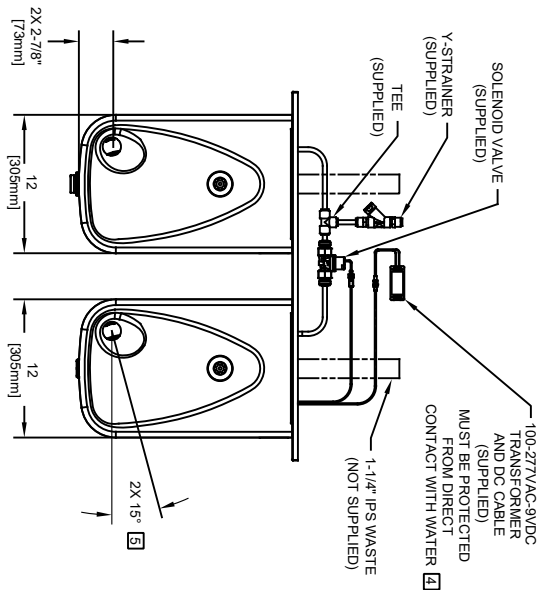
- NOTES:
1. HOLD ROUGH-IN DIMENSIONS $\pm 1/8"$ (3.2MM).
 2. WHEN INSTALLING THIS UNIT, LOCAL, STATE, OR FEDERAL CODES SHOULD BE ADHERED TO. FOR INSTALLATION HEIGHTS OTHER THAN SHOWN, DIMENSIONS MARKED (*) MUST BE ADJUSTED ACCORDINGLY.
 3. REFER TO 6874 SERIES OPERATION AND MAINTENANCE MANUAL FOR PUSH BUTTON AND VALVE INSTALLATION/MAINTENANCE INSTRUCTIONS.
 4. REFER TO 1RKH0 OR 2RKH0 SERIES OPERATION INSTRUCTIONS FOR TRANSFORMER AND SENSOR SETUP.
 5. MAXIMUM ADJUSTABLE RANGE IS 15" FROM PARALLEL TO BACK WALL.



SENSOR WIRING / SUPPLY PLUMBING SCHEMATIC

3/8" O.D. SUPPLY TUBING IS SUPPLIED. SCREWDRIVER STOP (NOT SHOWN) IS NOT SUPPLIED.

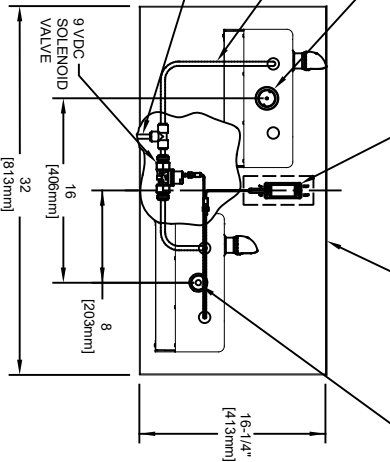
3/8" O.D. SUPPLY LINE TO TEE



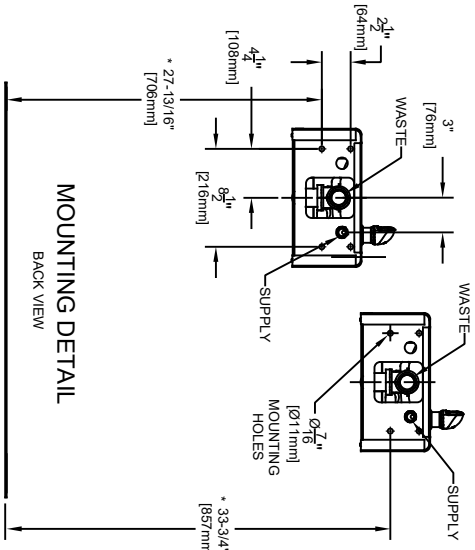
LOCATE AND INSTALL ELECTRICAL TRANSFORMER WITHIN WALL

BACK PANEL (SUPPLIED)

SENSOR EYE

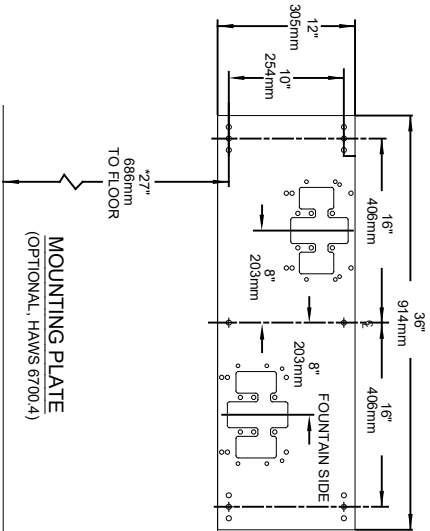
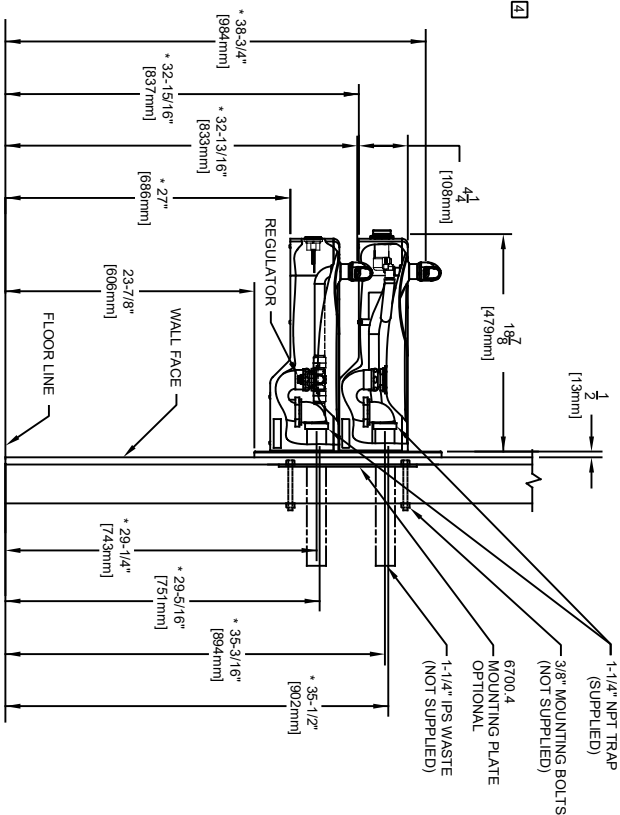


MODEL 1117LNHO SHOWN
MODEL 1117LNHO2 ON SHEET 2
(ROUGH-IN DIMENSIONS APPLY TO BOTH MODELS)



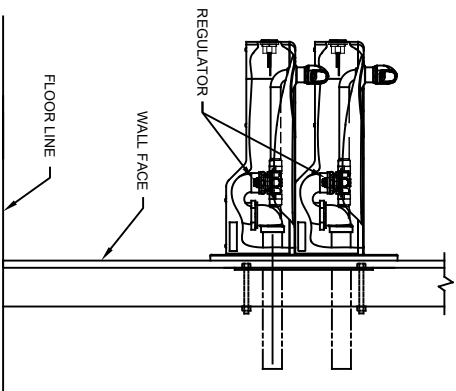
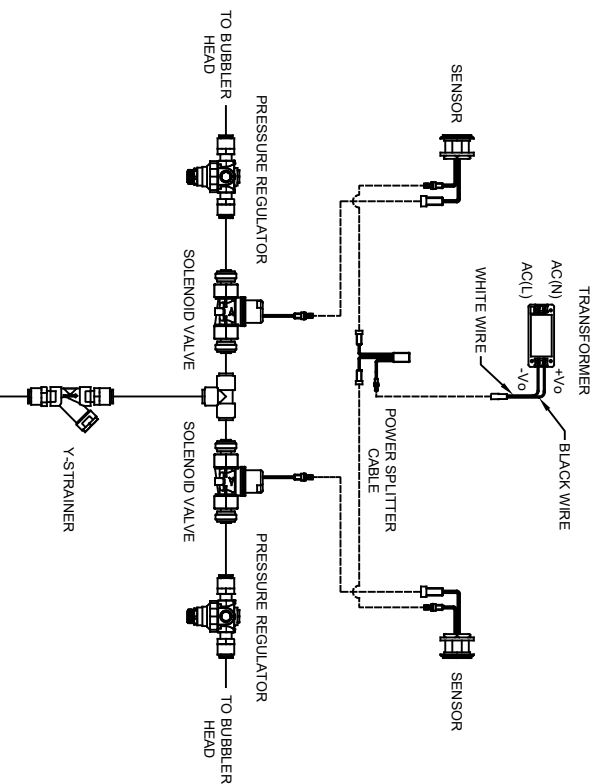
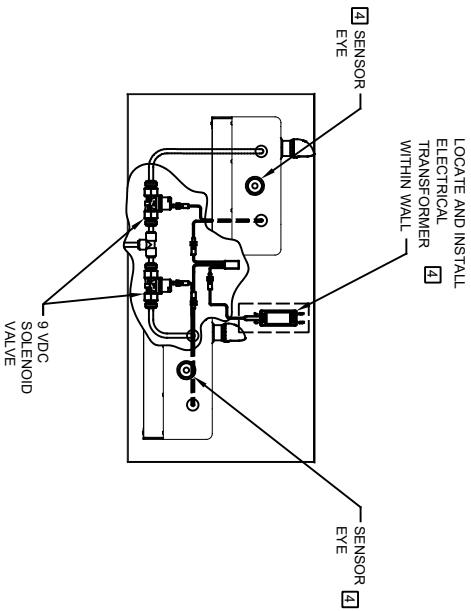
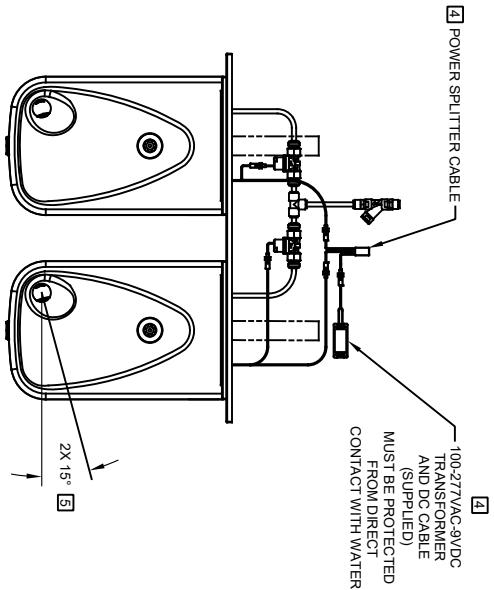
MOUNTING DETAIL

BACK VIEW



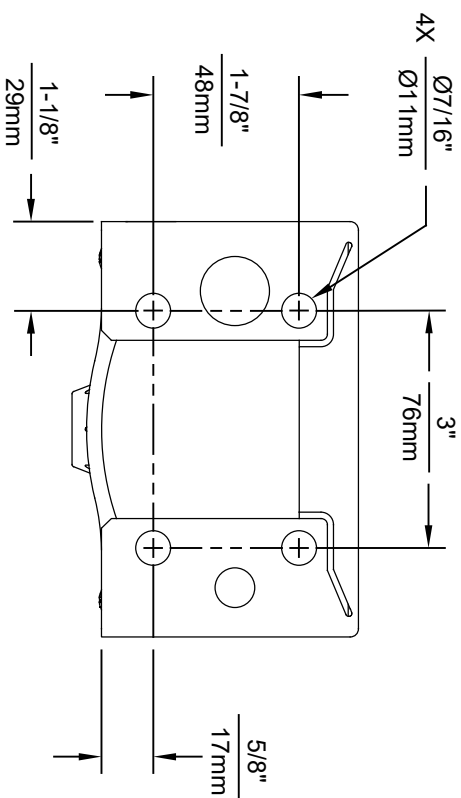
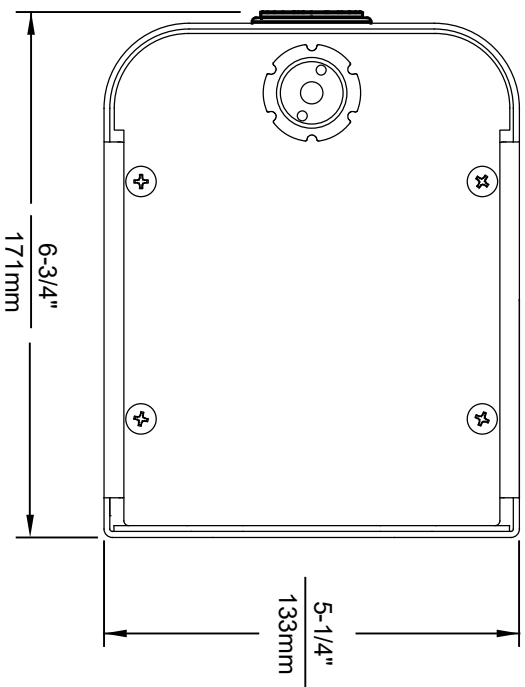
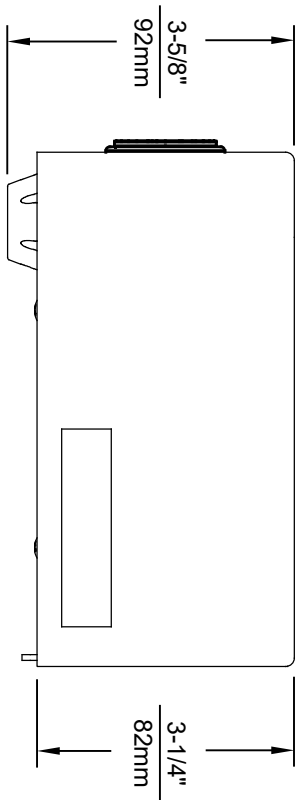
MOUNTING PLATE
(OPTIONAL, HAWS 6700.4)

		MODEL(S)	
1456 KLEPPE LANE SPARKS, NEVADA 89431 (775) 359-4712 FAX (775) 359-7424 E-MAIL: HAWS@HAWS.CO.COM WEBSITE: WWW.HAWS.CO.COM		1117LNHO/1117LNHO2	
ECN NO. REVISED PER BY:	5713	DATE:	07/28/21
CHKD:	FV	DP:	
APPROVED:	DATE:	SCALE:	1:2
DRAWING TYPE:		INSTALLATION	
SHEET 1 OF 2		REVISION 1	
PART NUMBER		0510001210.D	

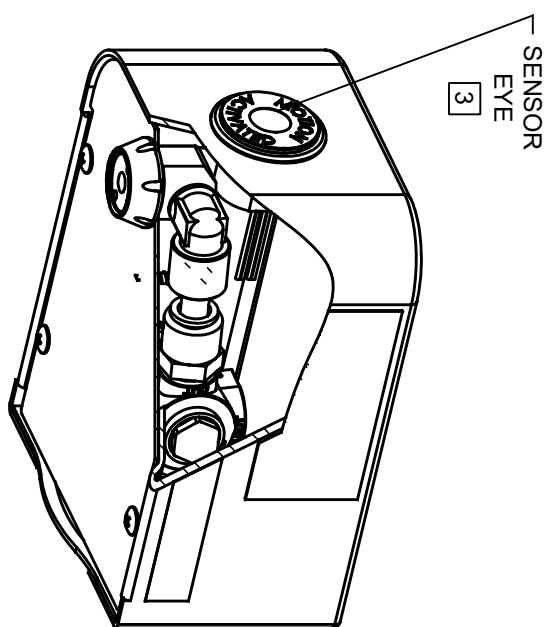


MODEL 1117NLH02 SHOWN
 MODEL 1117LNHO ON SHEET 1
 (SEE SHEET 1 FOR APPLICABLE ROUGH-IN DIMENSIONS)

		MODEL(S)	
1459 KLEPPE LANE SPARKS, NEVADA, 89431 (775) 359-4712 FAX (775) 359-7424 E-MAIL: HAWS@HAWS.CO.COM WEBSITE: WWW.HAWS.CO.COM		1117LNHO/1117LNHO2	
ECN NO. REVISED PER BY:	5713 FV	DATE:	07/28/21
CHKD:	DP	SCALE:	1:2
APPROVED:	FV	DATE:	07/29/21
DRAWN:	FV	DATE:	07/28/21
CHKD:	DP	SCALE:	1:2
APPROVED:	FV	DATE:	07/29/21
PART NUMBER		0510001210.D	
REVISION		1	
INSTALLATION		SIZE: A SHEET 2 OF 2	

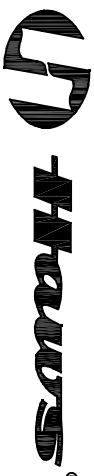


1920HO SERIES MOUNTING HOLE LOCATIONS
(3/8" - 16 UNC MOUNTING HARDWARE NOT SUPPLIED)



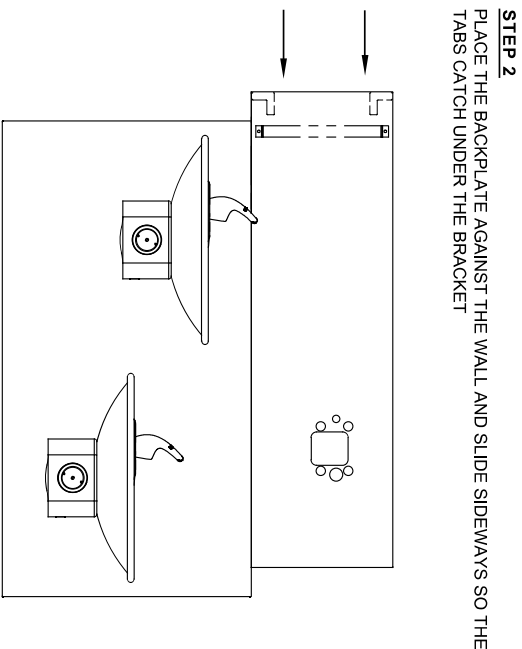
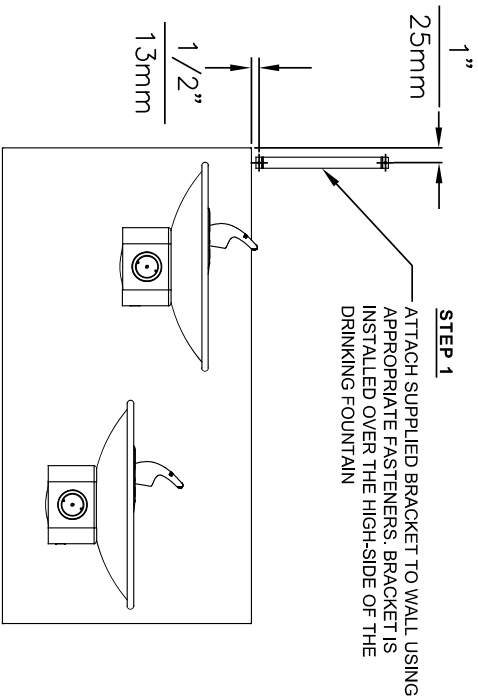
NOTES:

1. SEE SEPARATE INSTALLATION DRAWINGS FOR MOUNTING PLATES AND BACKPANELS
2. WHEN INSTALLING THIS UNIT, LOCAL, STATE OR FEDERAL CODES SHOULD BE ADHERED TO FOR INSTALLATION LOCATIONS, WASTE AND SUPPLY REQUIREMENTS OTHER THAN SHOWN.
- 3 REFER TO 1RKHO.H OPERATION & MAINTENANCE INSTRUCTIONS FOR SENSOR SETUP.



1455 KLEPPE LANE
SPARKS, NEVADA 89431
(775) 359-4712 FAX (775) 359-7424
E-MAIL: HAWS@HAWSCO.COM
WEBSITE: WWW.HAWSCO.COM

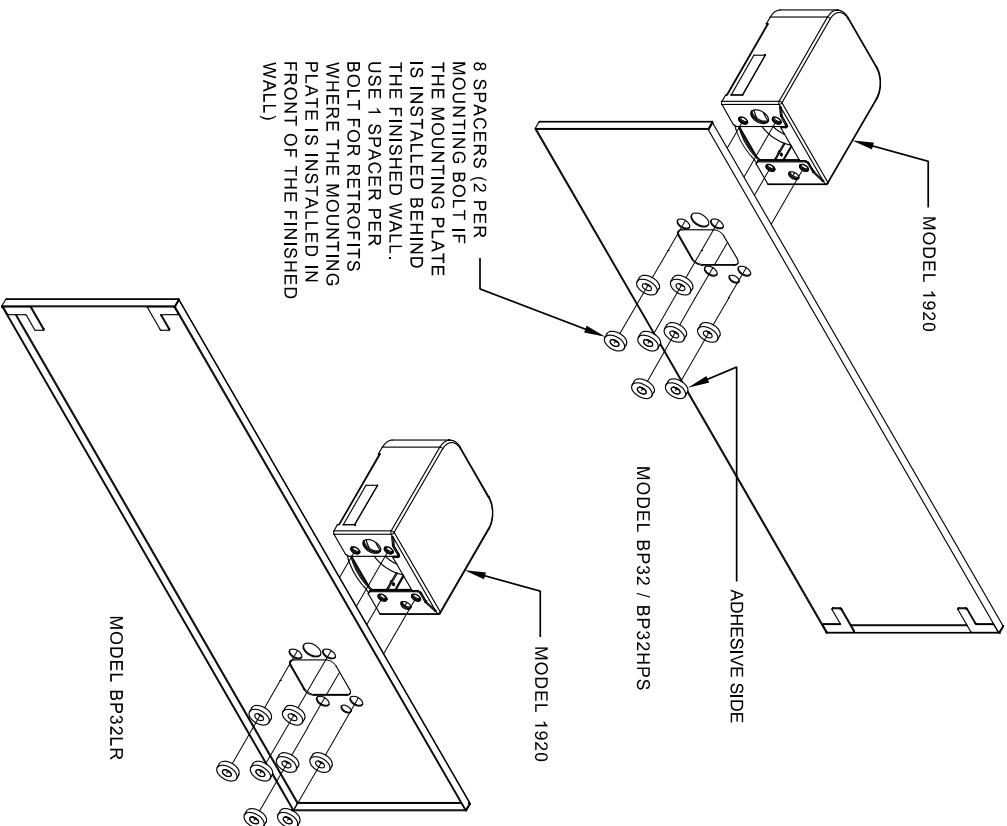
EQ# NO. REVISION	PER BY	DATE	SCALE	INSTALLATION	SIZE	SHEET
0510001063.D	B.M.	05/19/21	N/A		A	1 OF 6
0510001063.D	B.M.	05/19/21	N/A		A	4



STEP 3
INSTALL THE BOTTLE FILLER PER THE INSTRUCTIONS SUPPLIED WITH THE UNIT

- NOTES:
1. WHEN INSTALLING THIS UNIT, LOCAL, STATE OR FEDERAL CODES SHOULD BE ADHERED TO.

©2017 Haws Corporation - All Rights Reserved. HAWS® and other trademarks used in these materials are the exclusive property of Haws Corporation.



INSTALLATION OVER DOUBLE FOUNTAIN SHOWN FROM REAR

		MODEL(S)	
DRAWING, BACK PANEL SPACER INST. BF		PART NUMBER	
0510000493.D		REVISION 2	
1455 KLEPPE LANE SPARKS NEVADA, 89431 (775) 358-4712 FAX (775) 358-7424 E-MAIL: HAWS@HAWSCO.COM WEBSITE: WWW.HAWSCO.COM		SCALE: 1:1 DRAWING TYPE: INSTALLATION SHEET 2 OF 2	
CONC. REVISION PER BY:	DATE:	DATE:	DATE:
5081 EON:9172 MLL	02/20/17 FV	02/27/17	
APPROVED:	DATE:	SCALE:	DRAWING TYPE:
FV	02/27/17	1:1	INSTALLATION