

FEATURES & BENEFITS

CONSTRUCTION

Rugged ADA accessible 18 gauge Type 304 Stainless Steel swirl design bowl, 14 gauge Type 304 Stainless Steel bracket, and a vandal-resistant bottom plate provides a long lasting unit with added peace of mind.

BOTTLE FILLER

Vandal-resistant, 14-gauge Type 304 stainless steel bottle filler housing with push button operation and 1 gpm (3.78 L) laminar flow.

MOUNTING PLATE

3/16" (.47 cm) thick steel mounting plate (sold separately) is larger, thicker and stronger than any other plate in the industry, and shall include the all-thread studs, nuts, and washers which allows for easy installation to a framed wall. (P-trap and stop require rear access)

BUBBLER HEADS

Polished chrome-plated brass bubbler head with integral laminar flow prevents splashing while providing a superior flow pattern. The integral 11/16" dia. basin shank and stainless anti-rotation roll pin for vandal resistance strength. Shielded, angled stream opening provides a steady source of drinking water at .45 gpm.

FOUNTAIN VALVES

The push-button activated valves have an all stainless steel body, with chrome plated brass push button assembly which allows for front access to water stream adjustment, water control cartridge, and water supply strainer replacement without having to go through the bottom plate. Operating pressure range of 30 to 90 psi (2.1 to 6.2 bar).

VANDAL RESISTANT

The bubbler heads, push buttons, round bowls, drain strainers and bottom plates are locked in place, discouraging unwanted vandal tampering.

OPTIONS

- Support Frame: Model 6800 In-wall floor mounted fixture support legs, welded steel 4-bolt floor flanges, and supplied with 'U' bolts and hardware.
- Mounting Plate: Model 6700R, on-wall mounting plate for model 1920.
- Mounting Plate: Model 6700, in-wall mounting plate for model 1920.
- Bottle Filler Stand: Model BTL1001, add-on stainless steel stand to place bottle on when 1920 bottle filler is used.

For more information, visit www.hawscow.com or call (888) 640-4297.



REQUIRED MODELS

1011 / 1920 / BP32 / 6700.4

Order these items to make up the Model 1011-1920 dual fountain with stainless steel back panel, bottle filler with stainless steel back plate, and fountain mounting plate shown above.

SPECIFICATIONS

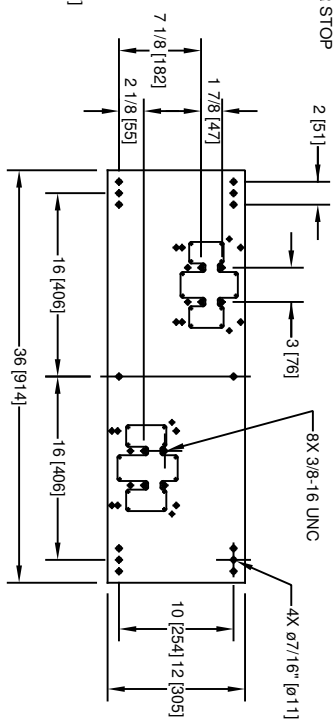
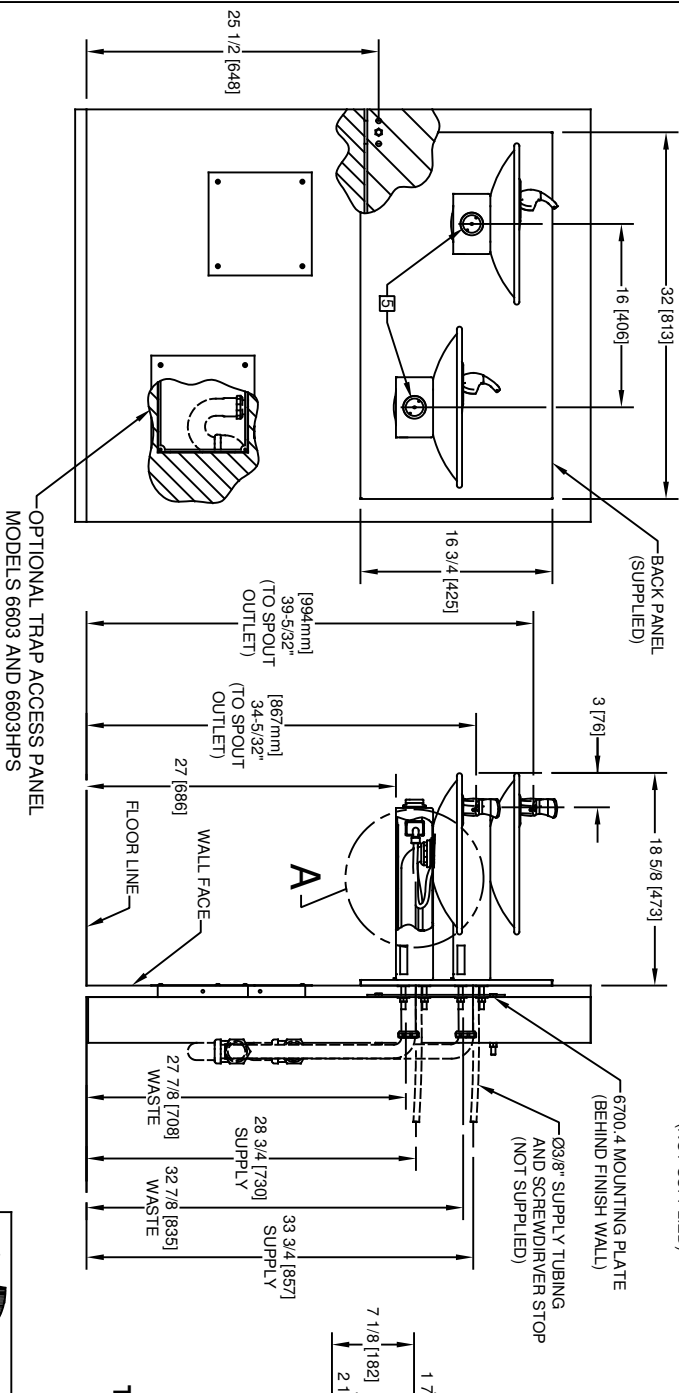
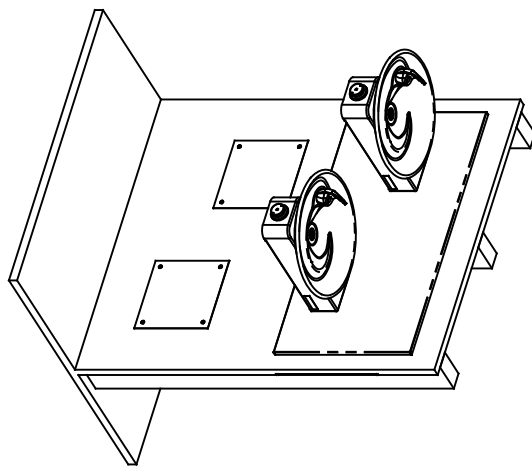
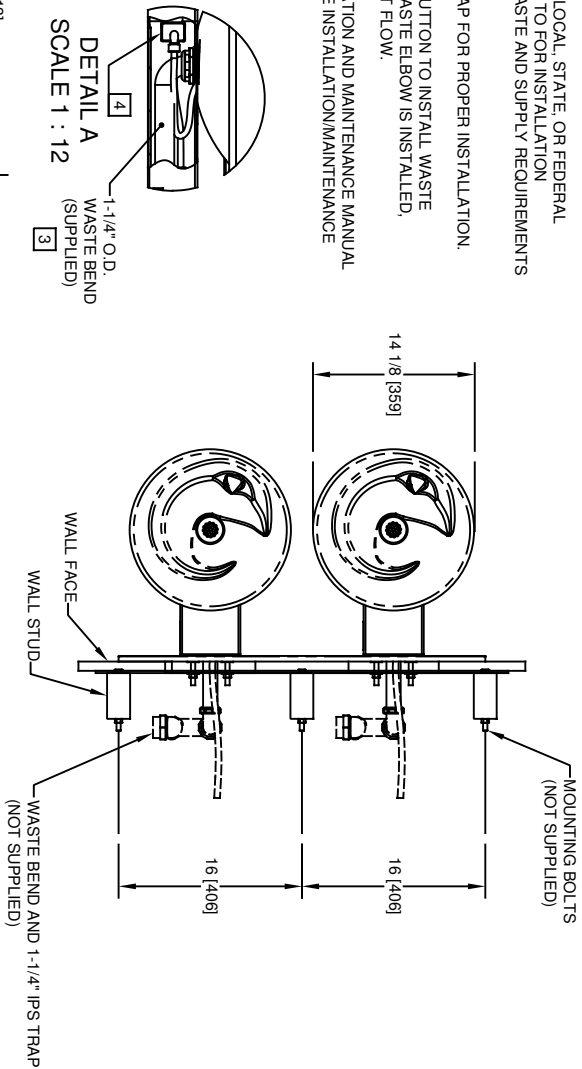
Model 1011-1920 ADA wall mounted vandal-resistant drinking fountain and bottle filler shall include dual 18 gauge Type 304 Stainless Steel satin finish basins with integral swirl design, 14 gauge Type 304 Stainless Steel wall brackets and bottle filler bracket, 100% lead-free waterways, vandal-resistant pushbutton operated stainless steel valves with front-accessible cartridge and flow adjustment, 1 gpm (3.78 L) laminar flow bottle filler, polished chrome-plated brass vandal-resistant bubbler heads with integral laminar anti-squirt flow, chrome-plated brass vandal-resistant waste strainers, vandal-resistant bottom plates, stainless steel satin finish back panel, high and low fountain mounting levels, and 1-1/4" O.D. (3.2 cm) waste pipes. (P-trap and stop require rear access) Model meets all current Federal Regulations for the disabled including those in the Americans with Disabilities Act. Haws manufactures drinking fountains, faucets and electric water coolers to be lead-free by all known definitions including NSF/ANSI/CAN 61- Section 9, NSF/ANSI/CAN 372, California Proposition 65, and the Federal Safe Drinking Water Act. Product is compliant to California Health and Safety Code 116875 (AB 1953-2006), and 116876 (AB 100) "NSF/ANSI/CAN 61: Q ≤ 1".

The bottle filler requires a mounting plate; either the Haws model 6700 in-wall or the 6700R on-wall support plate.



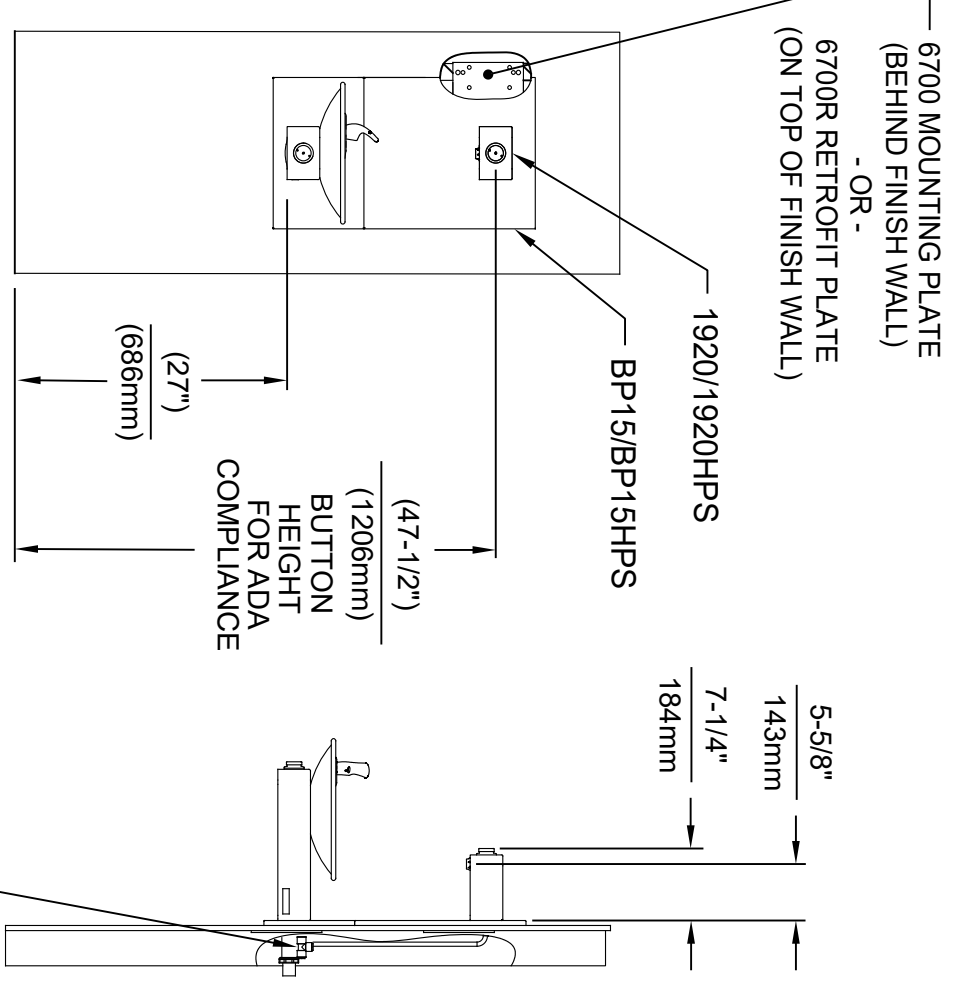
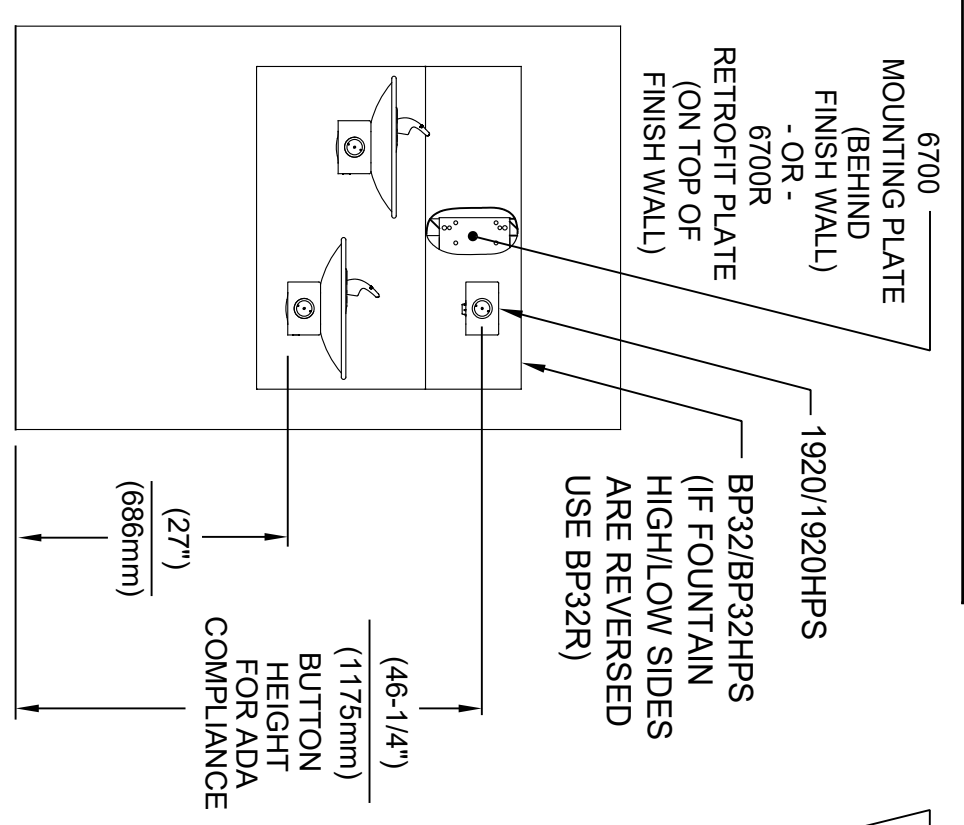
NOTES:

1. HOLD ROUGH-IN DIMENSIONS ±1/8" (3.2mm).
2. WHEN INSTALLING THIS UNIT, LOCAL, STATE, OR FEDERAL CODES SHOULD BE ADHERED TO FOR INSTALLATION DIMENSIONS (LOCATIONS), WASTE AND SUPPLY REQUIREMENTS OTHER THAN SHOWN.
3. INSTALLER MUST PROVIDE TRAP FOR PROPER INSTALLATION.
4. REMOVE VALVE FROM PUSH BUTTON TO INSTALL WASTE ELBOW ON TO BOWL. AFTER WASTE ELBOW IS INSTALLED, REINSTALL VALVE AND ADJUST FLOW.
5. REFER TO 5874 SERIES OPERATION AND MAINTENANCE MANUAL FOR PUSH BUTTON AND VALVE INSTALLATION/MAINTENANCE INSTRUCTIONS.



**6700.4 MOUNTING PLATE
MUST BE INSTALLED BEFORE FINISH WORK.
THIS PLATE IS REQUIRED - SOLD SEPARATELY.**

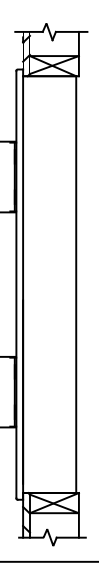
		MODEL(S)	
1456 KLEPPE LANE SPARKS, NEVADA, 89431 (775) 359-4712 FAX (775) 359-7424 E-MAIL: HAWS@HAWSCO.COM WEBSITE: WWW.HAWSCO.COM		1011/1011HPS	
PART NUMBER 0002076520.D		REVISION 21	
ECON NO. REVISED PER BY: MODEL(S)		SCALE: 1:1 DRAWING TYPE: INSTALLATION	
DRAWN: ECON: S530 FV		SIZE: A SHEET: 1 OF 1	
DATE: 05/98 CHKD:		REVISION:	
APPROVED: RM DP		DATE: 03/28/20	



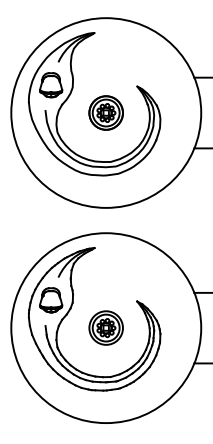
INSTALLATION ABOVE HAWS 1011 & H1011.8 SERIES

INSTALLATION ABOVE HAWS 1001 & H1001.8 SERIES

* IF YOUR FOUNTAIN IS THIS STYLE USE THESE DIMENSIONS

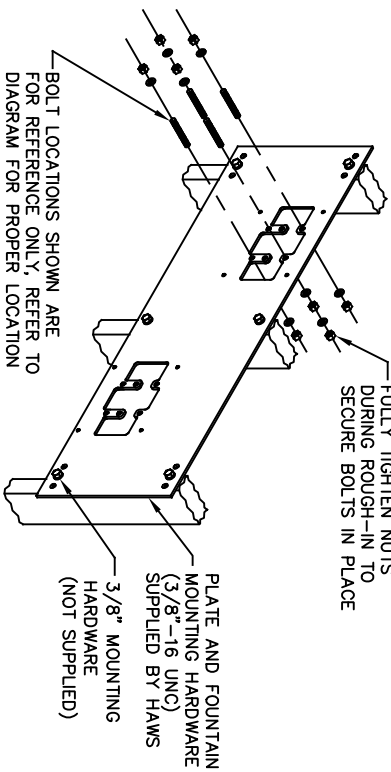
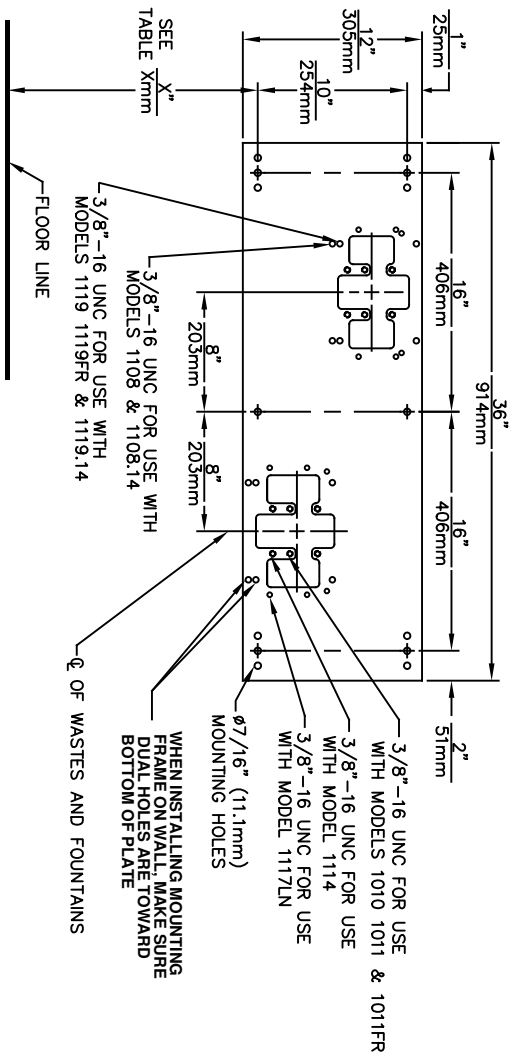


1. SEE SEPARATE INSTALLATION DRAWINGS FOR MOUNTING PLATES AND BACKPANELS
2. WHEN INSTALLING THIS UNIT, LOCAL, STATE OR FEDERAL CODES SHOULD BE ADHERED TO FOR INSTALLATION LOCATIONS, WASTE & SUPPLY REQUIREMENTS OTHER THAN SHOWN.



3/8" O.D. SUPPLY TUBING AND 3/8" O.D. PUSH-IN TEE SUPPLIED. (CONNECT TO FOUNTAIN SUPPLY LINE)

		Haws	
1459 KLEPPE LANE SPARKS, NEVADA 89431 (775) 359-4712 FAX (775) 359-7424 E-MAIL: HAWS@HAWSCO.COM WEBSITE: WWW.HAWSCO.COM		MODEL(S) 1920/1920HPS/1920W	
ECN NO. REVISED PER BY: 5081 DRAWN: MD DATE: 01/20/17 APPROVED: FV	ECN: 5744 CHKD: FV DATE: 01/20/17 DATE: 10/1/21	SCALE: N/A	DRAWING TYPE: INSTALLATION
PART NUMBER: 0510000490.D		REVISION: 10	SHEET: 2 OF 7



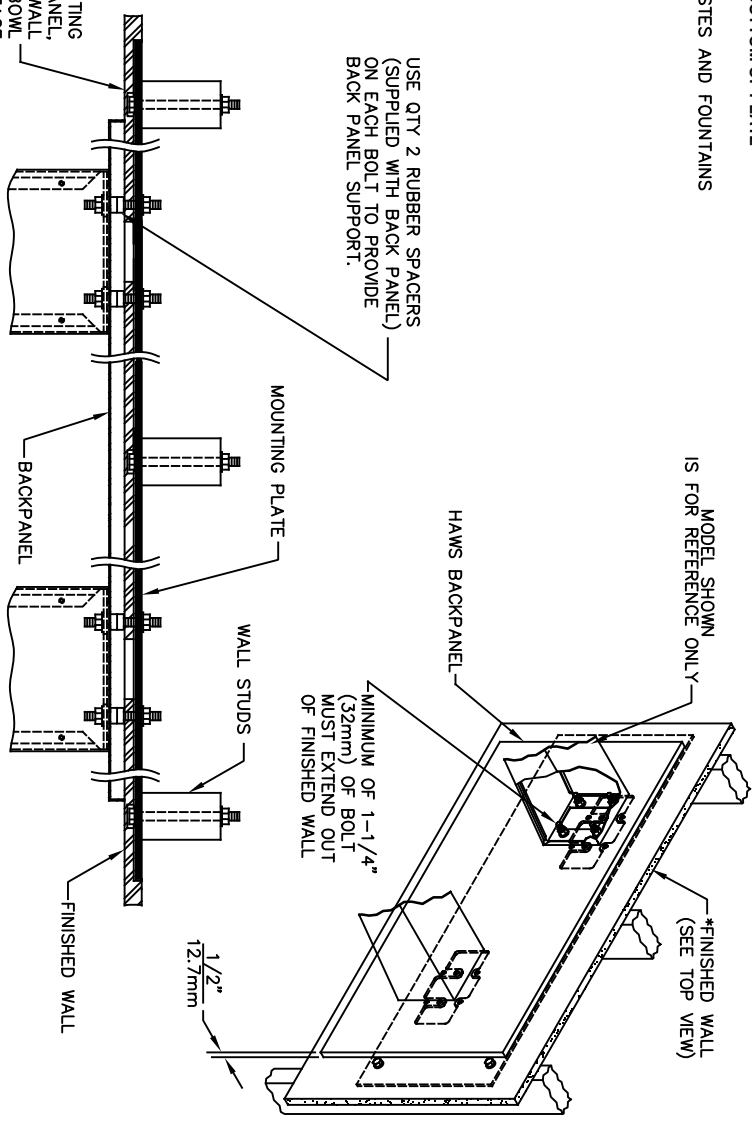
*FINISH WALL OVER MOUNTING PLATE AND BEHIND BACKPANEL, MAKE SURE THAT FINISHED WALL EXTENDS WITHIN THE BRACKET/BOWL MOUNTING HOLES (TO PROVIDE SURFACE AREA FOR RUBBER SPACERS TO CONTACT).

CAUTION

REGARDING CONCRETE/MASONRY WALL MOUNTING-DO NOT SECURE MOUNTING PLATE TO SAME SIDE OF WALL AS FOUNTAIN. AVOID COMPROMISING INTEGRITY OF WALL WHEN ANCHORING FOUNTAIN. IT IS RECOMMENDED THAT INSTALLER CALL TECHNICAL SUPPORT IF THERE ARE ANY QUESTIONS AS TO HOW TO OBTAIN A PROPER ANCHOR IN CONCRETE/MASONRY WALLS. 1-800-766-5612

DIMENSION	1011	MODEL
"X"	25-1/2" [646mm]	
LOWER SUPPLY	28-3/4" [730mm]	
LOWER WASTE	27-7/8" [708mm]	
UPPER SUPPLY	33-3/4" [857mm]	
UPPER WASTE	32-7/8" [835mm]	
DIMENSION	1119	MODEL
"X"	27-5/8" [702mm]	1119, 114
LOWER SUPPLY	29-5/8" [752mm]	
LOWER WASTE	30-3/4" [781mm]	
UPPER SUPPLY	35-3/8" [905mm]	
UPPER WASTE	36-1/2" [927mm]	
DIMENSION	1011FR	MODEL
"X"	25-1/2" [646mm]	1119FR
SUPPLY WASTE	SEE FREEZE VALVE ROUGH-IN	SEE FREEZE VALVE ROUGH-IN

DIMENSION	1117LN	MODEL
"X"	27" [686mm]	
LOWER SUPPLY	29-1/2" [749mm]	
LOWER WASTE	29-1/4" [743mm]	
UPPER SUPPLY	35-1/2" [902mm]	
UPPER WASTE	35-1/4" [895mm]	



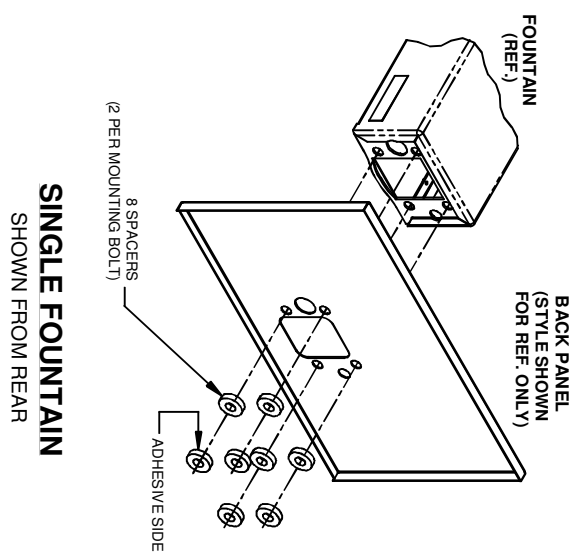
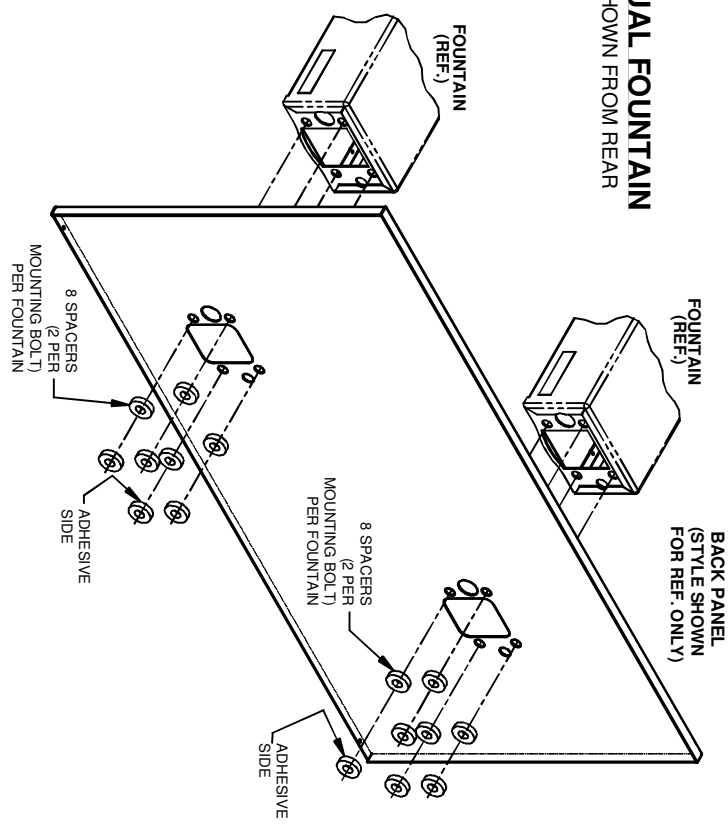
TOP VIEW

1456 KLEPPE LANE
SPARKS, NEVADA 89431
(775) 359-4712 FAX (775) 359-7424
E-MAIL: HAWS@HAWS.CO.COM
WEBSITE: WWW.HAWS.CO.COM

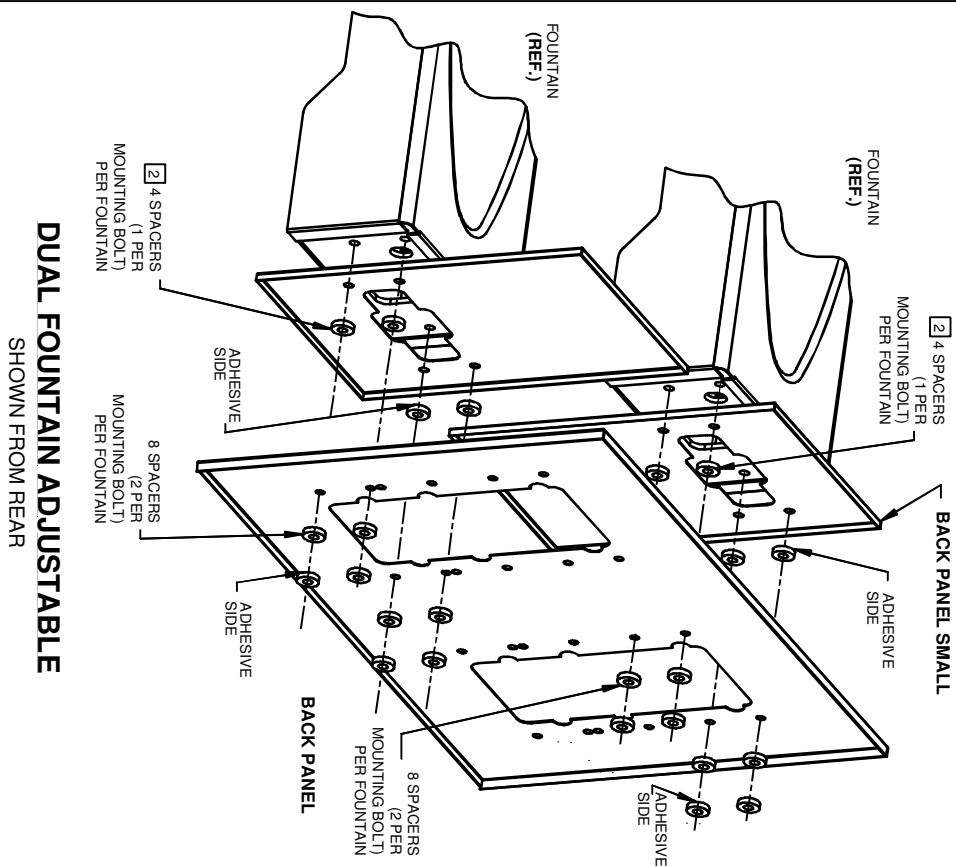
ECN NO. REVISED PER: BY: FV	MODEL(S)	6700.4
DATE: 04/29/93	CHKD: DP	
DATE: 04/13/20	SCALE: N/A	DRAWING TYPE: INSTALLATION
APPROVED: FV	SIZE: A	SHEET: 1 OF 1
REVISION: 18		

DUAL FOUNTAIN

SHOWN FROM REAR



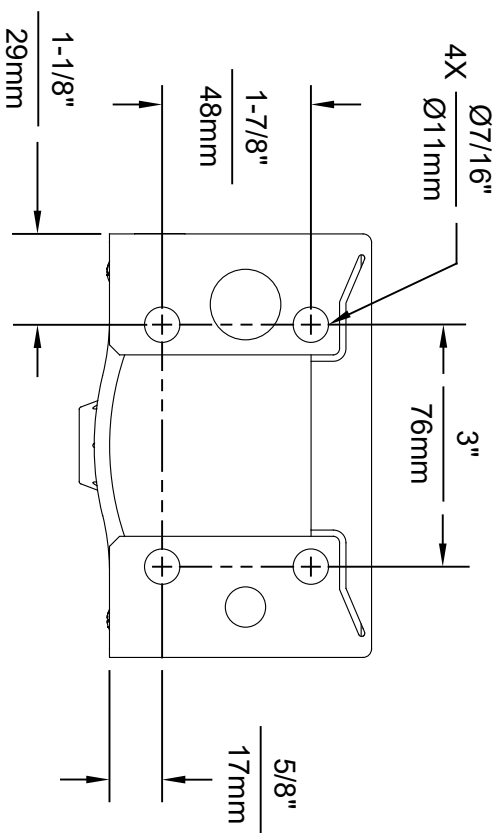
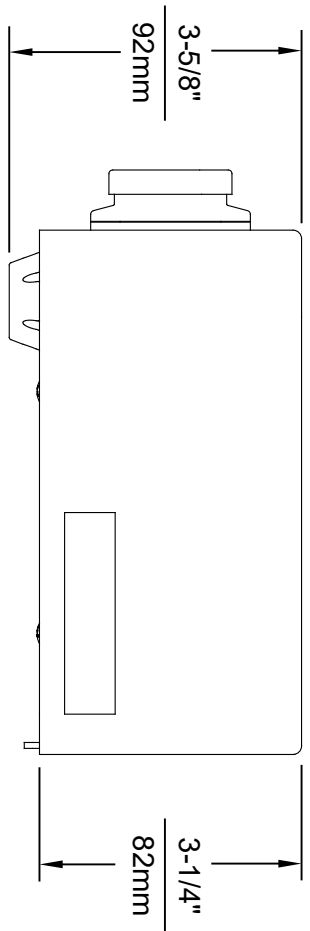
- NOTES:**
- 1** ON ALL BACK PANEL MODELS, SPACERS ARE NOT USED WHEN A MOUNTING FRAME IS USED EXCEPT AS SPECIFIED IN NOTE **2**
 - 2** INDICATED SPACERS ARE USED WITH MOUNTING FRAME (DUAL ADJUSTABLE)



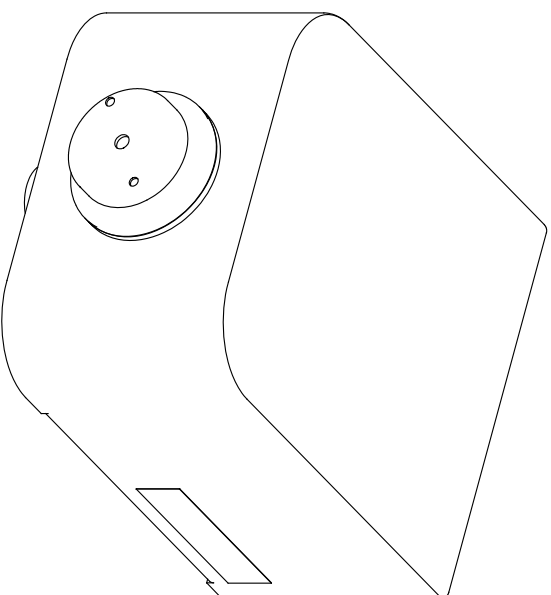
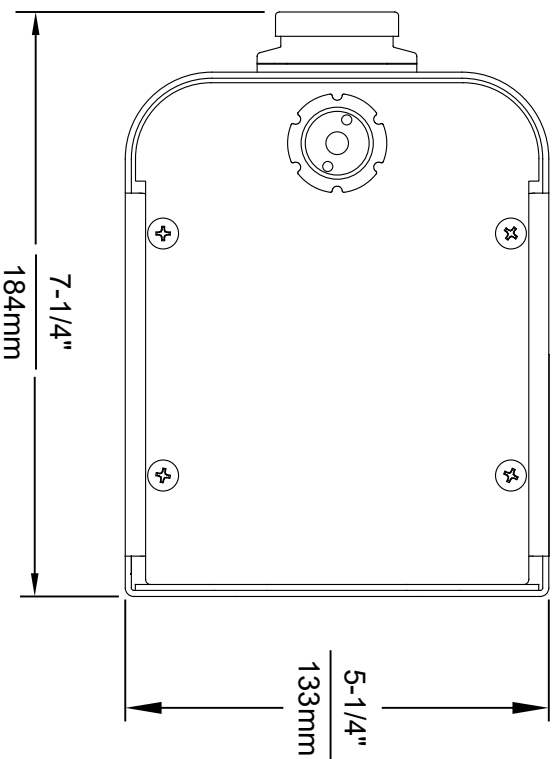
DUAL FOUNTAIN ADJUSTABLE

SHOWN FROM REAR

		MODELS(S)	
EON NO.	REVISED PERI BY:	BACK PANEL	
DRAWN:	EON: 4595	SPACER INSTRUCTIONS	
CL:	DATE: CHKD:	INSTALLATION	
APPROVER:	102892	SCALE: 1:10	DRAWING TYPE:
	DATE:	SIZE: A	SHEET 1 OF 1
1455 KLEPPE LANE		PART NUMBER	
SPARKS, NEVADA 89431		0002082219	
(775) 359-4712 FAX (755) 359-7424		DRAWING NO. REF	
E-MAIL: HAWS@HAWSCO.COM		08292001 5	
WEBSITE: WWW.HAWSCO.COM			



1920 MOUNTING HOLE LOCATIONS



NOTES:

1. SEE SEPARATE INSTALLATION DRAWINGS FOR MOUNTING PLATES AND BACKPANELS
2. WHEN INSTALLING THIS UNIT, LOCAL, STATE OR FEDERAL CODES SHOULD BE ADHERED TO FOR INSTALLATION LOCATIONS, WASTE & SUPPLY REQUIREMENTS OTHER THAN SHOWN.

		Haws	
1459 KLEPPE LANE SPARKS, NEVADA, 89431 (775) 359-4712 FAX (775) 359-7424 E-MAIL: HAWS@HAWSCO.COM WEBSITE: WWW.HAWSCO.COM		MODEL(S) 1920/1920HPS/1920W	
ECN NO. REVISED PER BY: 5081 FV	ECN. 5744 FV	DATE: 05/25/16	CHKD: BMM
APPROVED: FV	DATE: 10/1/21	SCALE: N/A	DRAWING TYPE: INSTALLATION
PART NUMBER 0510000490.D	REVISION 10	SIZE: A	SHEET: 1 OF 7