

## FEATURES & BENEFITS

### CONSTRUCTION

Rugged ADA accessible polished 18 gauge Type 304 Stainless Steel swirl design bowl, polished 14 gauge Type 304 Stainless Steel bracket and bottle filler, and vandal-resistant bottom plates provides a long lasting unit with added peace of mind.

### VANDAL RESISTANT

The bubbler head, sensor, round bowl, drain strainer and bottom plate are locked in place, discouraging unwanted vandal tampering, and 30-second obstruction time-out to reduce tampering of sensor.

### BUBBLER HEAD

Polished chrome-plated brass bubbler head with integral laminar flow prevents splashing while providing a superior flow pattern. The integral 11/16" dia. basin shank and stainless anti-rotation roll pin for vandal resistance strength. Shielded, angled stream opening provides a steady, sanitary source of drinking water at .45 gpm.

### FOUNTAIN VALVES

Fountain incorporates touchless sensor operated stainless steel solenoid valves controlled by a transformer for handsfree operation. A pressure regulator is used to adjust the bubbler flow according to incoming water pressures.

### MOUNTING

3/16" (.47 cm) thick steel mounting plate (sold separately) is larger, thicker and stronger than any other plate in the industry, and shall include the all-thread studs, nuts, and washers which allows for easy installation to a framed wall. (P-trap and stop require rear access).

## OPTIONS

- Support Frame: Model 6800 universal in-wall mounting support for use in conjunction with the 6700 plate for extra heavy duty fixture support in vandalism prone areas.
- Mounting Plate: Model 6700R, on-wall mounting plate for model 1920.
- Mounting Plate: Model 6700, in-wall mounting plate for model 1920.
- Water Filter: Model 6426, 10" x 2" (25.4 x 5.1 cm), in-line lead removal element that reduces lead from incoming water supply.

For more information, visit [www.hawsc.com](http://www.hawsc.com) or call (888) 640-4297.



## REQUIRED MODELS

### 1001HPSHO / BP6HPS / 6700 / 1920HPSHO / BP15HPS

Order these items to make up the Model 1001HPSHO-1920HPSHO fountain with polished stainless steel back panel, bottle filler with polished stainless steel back plate, and fountain mounting plate shown above.

### FOR INDOOR USE ONLY

## SPECIFICATIONS

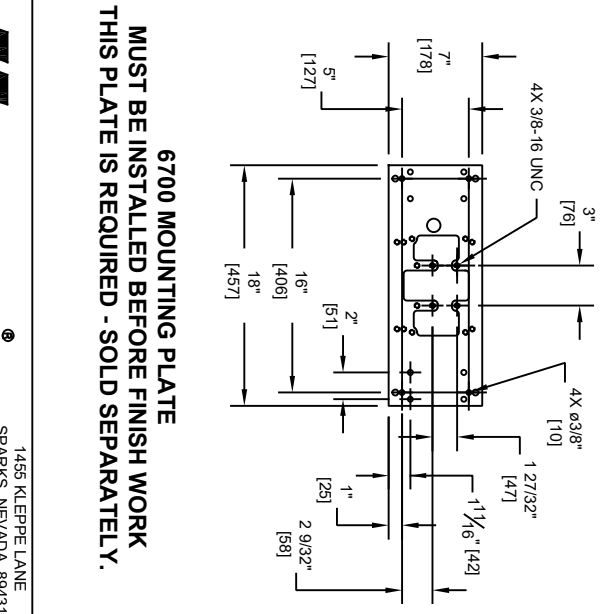
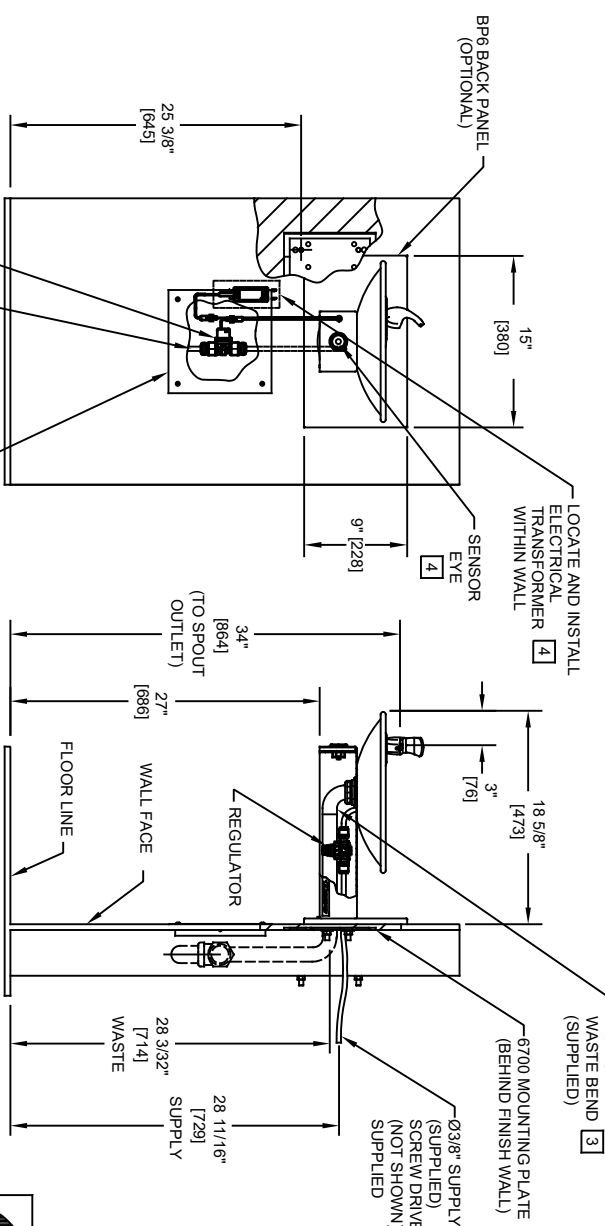
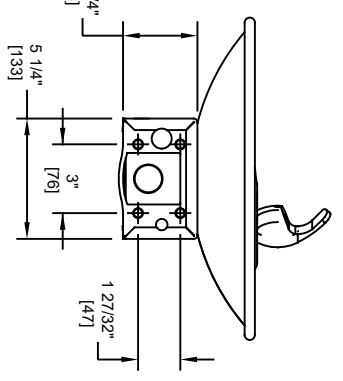
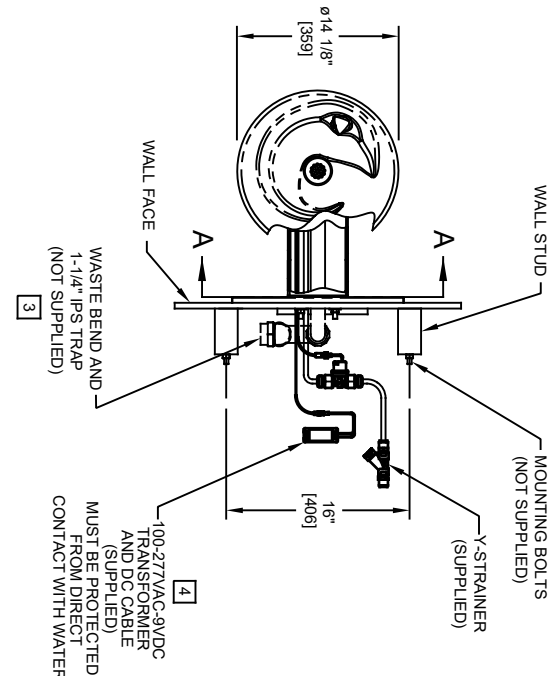
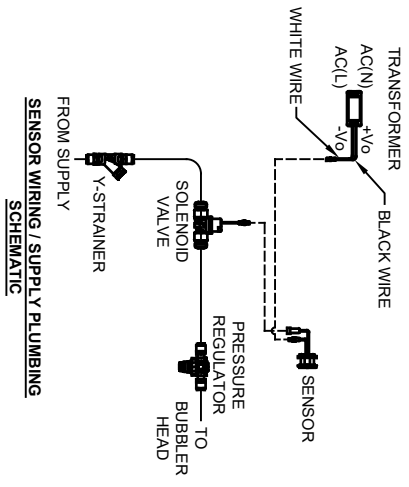
Model 1001HPSHO-1920HPSHO ADA vandal-resistant wall mounted motion-activated drinking fountain and bottle filler shall include an 18 gauge polished Type 304 Stainless Steel basin with integral swirl design, polished 14 gauge Type 304 Stainless Steel wall bracket and bottle filler bracket, 100% lead-free waterways, touchless sensor operated stainless steel solenoid valves with 30-second obstruction time-out controlled by a transformer, polished chrome plated brass vandal-resistant bubbler head with integral laminar anti-squirt flow, 1 gpm (3.78 L) laminar flow bottle filler, chrome plated brass vandal-resistant waste strainer, vandal-resistant bottom plates, and 1-1/4" (3.2 cm) O.D. waste pipe. (P-trap and stop require rear access). Manufactured to be lead-free by all known definitions including NSF/ANSI/CAN 61-Section 9, NSF/ANSI/ CAN 372, California Proposition 65, and the Federal Safe Drinking Water Act. Product is compliant to California Health and Safety Code 116875 (AB 1953-2006), and 116876 (AB 100) "NSF/ANSI/CAN 61: Q ≤ 1".

**The bottle filler requires a mounting plate; either the Haws model 6700 in-wall or the 6700R on-wall support plate.**



NOTES:

1. HOLD ROUGH-IN DIMENSIONS ±1/8" (3.2mm).
2. WHEN INSTALLING THIS UNIT, LOCAL, STATE, OR FEDERAL CODES SHOULD BE ADHERED TO FOR INSTALLATION DIMENSIONS (LOCATIONS), WASTE AND SUPPLY REQUIREMENTS OTHER THAN SHOWN.
3. INSTALLER MUST PROVIDE TRAP FOR PROPER INSTALLATION.
4. REFER TO 1RKH01H OPERATION AND MAINTENANCE INSTRUCTIONS FOR TRANSFORMER AND SENSOR SETUP.

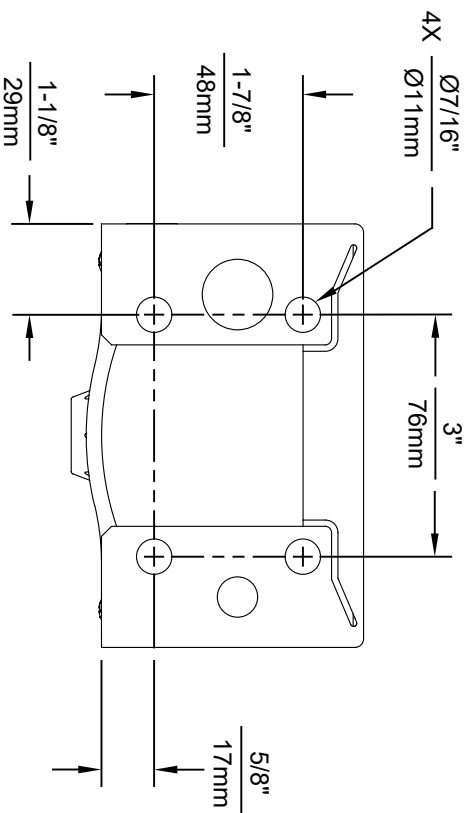
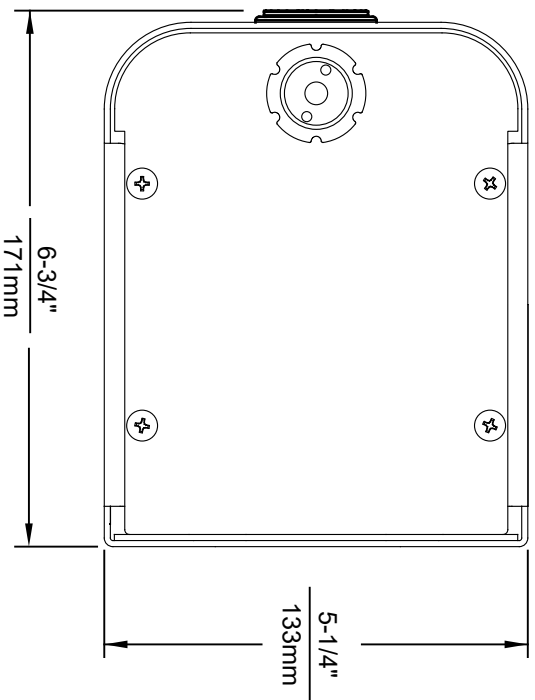
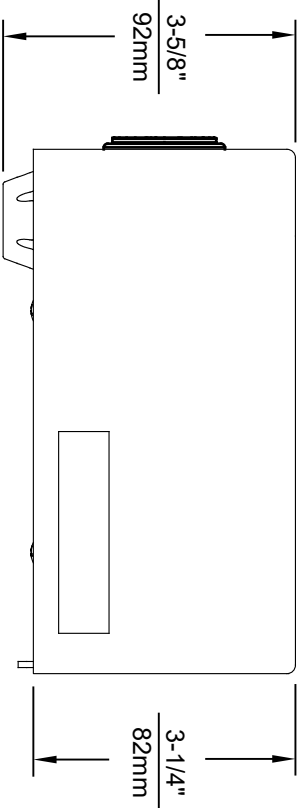


**6700 MOUNTING PLATE**  
**MUST BE INSTALLED BEFORE FINISH WORK**  
**THIS PLATE IS REQUIRED - SOLD SEPARATELY.**

1456 KLEPPE LANE  
 SPARKS, NEVADA, 89431  
 (775) 359-4712 FAX (775) 359-7424  
 E-MAIL: HAWWS@HAWSCO.COM  
 WEBSITE: WWW.HAWSCO.COM

ECN NO. REVISED PER BY: MODEL(S)  
 ECN: 5733 FV: 1001HO  
 DRAWN: DATE: CHK'D: FV:  
 FV: 09/28/21 B.M. FV:  
 APPROVED: DATE: SCALE: 1:1 DRAWING TYPE: INSTALLATION  
 FV: 09/30/21

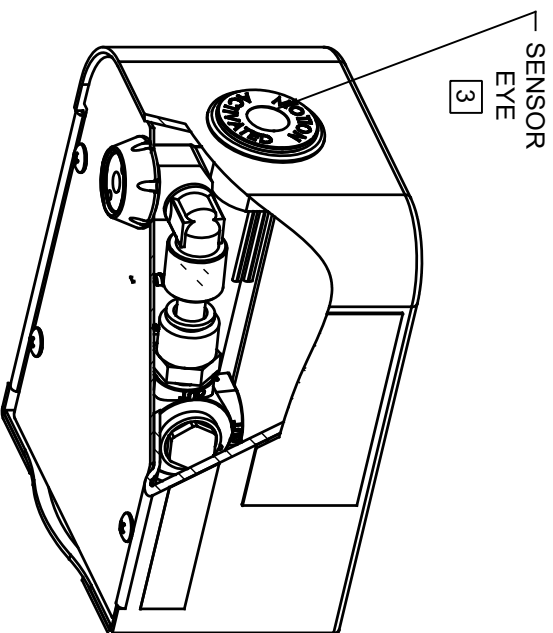
PART NUMBER: 0510002020.D  
 REVISION: 1



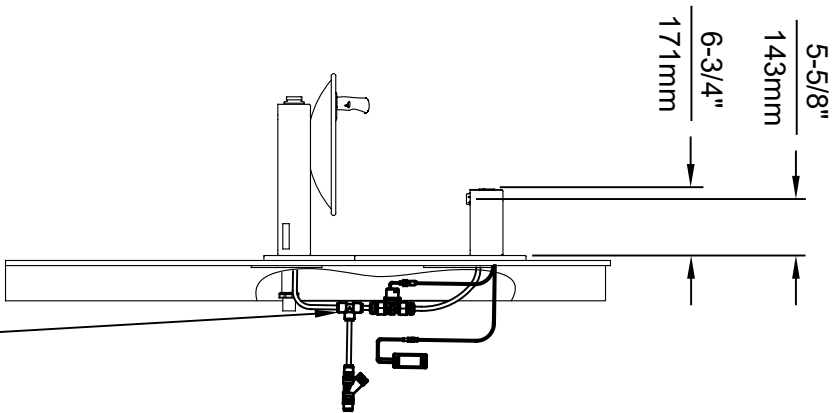
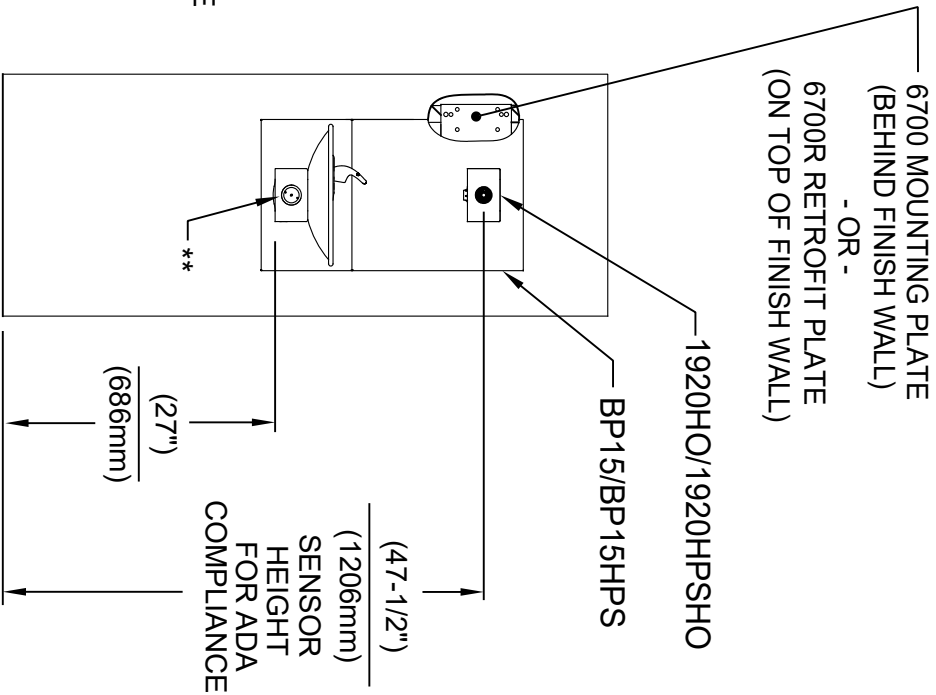
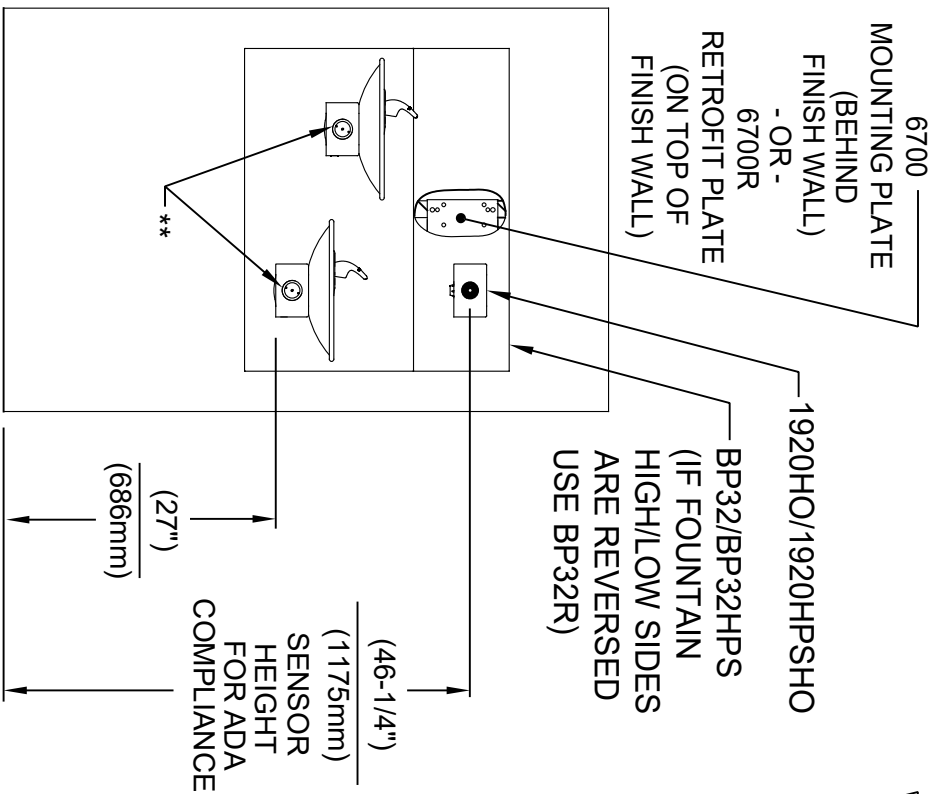
1920HO SERIES MOUNTING HOLE LOCATIONS  
(3/8\"-16 UNC MOUNTING HARDWARE NOT SUPPLIED)

NOTES:

1. SEE SEPARATE INSTALLATION DRAWINGS FOR MOUNTING PLATES AND BACKPANELS
2. WHEN INSTALLING THIS UNIT, LOCAL, STATE OR FEDERAL CODES SHOULD BE ADHERED TO FOR INSTALLATION LOCATIONS, WASTE AND SUPPLY REQUIREMENTS OTHER THAN SHOWN.
3. REFER TO 1RKHO.H OPERATION & MAINTENANCE INSTRUCTIONS FOR SENSOR SETUP.



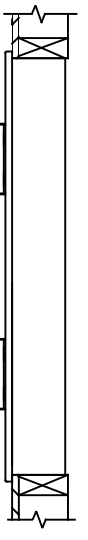
		<b>Haws</b>		1459 KLEPPE LANE SPARKS, NEVADA, 89431 (775) 359-4712 FAX (775) 359-7424 E-MAIL: HAWS@HAWSCO.COM WEBSITE: WWW.HAWSCO.COM	
ECN NO. REVISED PERBY:	MODEL(S)	1920HO/1920HPPSHO/1920WHO			
5574 ECN:5744 FV	DATE: CHKD:				
FV	08/18/20 B.M				
APPROVED: FV	DATE: 10/1/21	SCALE: N/A	DRAWING TYPE:	INSTALLATION:	SIZE: A
			PART NUMBER		SHEET 1 OF 7
			0510001063.D		REVISION 5



**INSTALLATION ABOVE HAWS 1011 & H1011.8 SERIES**

**INSTALLATION ABOVE HAWS 1001 & H1001.8 SERIES**

\* IF YOUR FOUNTAIN IS THIS STYLE USE THESE DIMENSIONS

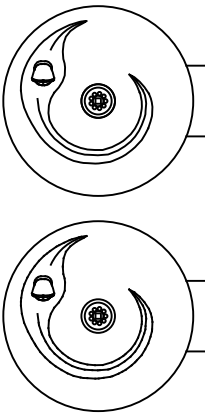


1. SEE SEPARATE INSTALLATION DRAWINGS FOR MOUNTING PLATES AND BACKPANELS

2. WHEN INSTALLING THIS UNIT, LOCAL, STATE OR FEDERAL CODES SHOULD BE ADHERED TO FOR INSTALLATION LOCATIONS, WASTE & SUPPLY REQUIREMENTS OTHER THAN SHOWN.

\*\* EXISTING PUSH BUTTON ASSEMBLY SHOWN, CAN BE CONVERTED TO HANDS OFF STYLE, USING RETRO-FIT KIT MODEL 1RKHO.H OR 2RKHO.H DEPENDING ON CUSTOMER REQUIREMENTS.

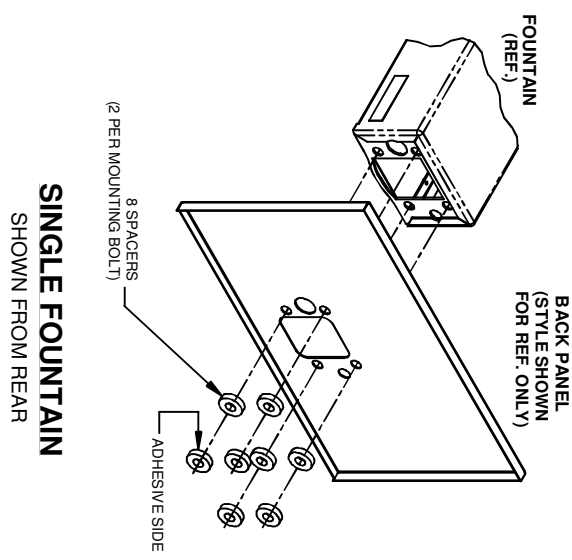
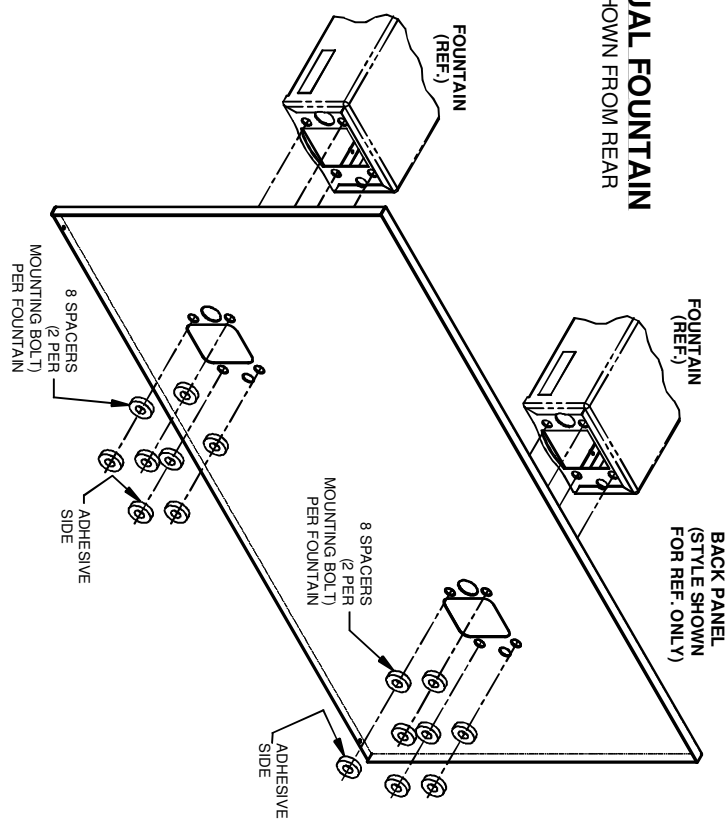
3/8" O.D. SUPPLY TUBING AND 3/8" O.D. PUSH-IN TEE SUPPLIED. (CONNECT TO FOUNTAIN SUPPLY LINE)



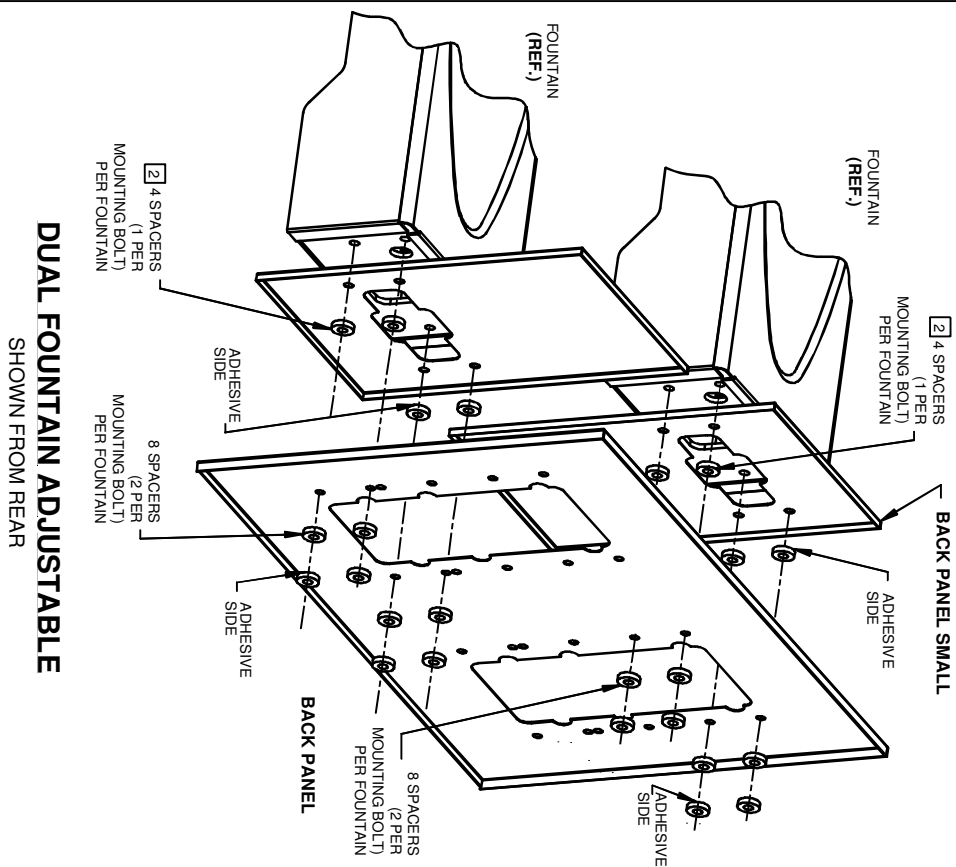
1459 KLEPPE LANE  
SPARKS, NEVADA 89431  
(775) 359-4712 FAX (775) 359-7424  
E-MAIL: HAWS@HAWSCO.COM  
WEBSITE: WWW.HAWSCO.COM

ECN NO. REVISED PER BY:	MODEL(S)	PART NUMBER
5574 ECN: 5744 FV	1920HO/1920HPSHO/1920WHO	0510001063.D
DATE: CHK'D:	SCALE: N/A	REVISION: 5
09/18/20 B.M.	DRAWING TYPE: INSTALLATION	SHEET 2 OF 7
APPROVED: FV	DATE: 10/1/21	

### DUAL FOUNTAIN SHOWN FROM REAR



- NOTES:**
- 1** ON ALL BACK PANEL MODELS, SPACERS ARE NOT USED WHEN A MOUNTING FRAME IS USED EXCEPT AS SPECIFIED IN NOTE **2**
  - 2** INDICATED SPACERS ARE USED WITH MOUNTING FRAME (DUAL ADJUSTABLE)



### DUAL FOUNTAIN ADJUSTABLE SHOWN FROM REAR

		<b>MODELS(S)</b>	
EGN NO. REVISED PERI BY:	EGN-4595	BACK PANEL	
DRAWN: CHKD:	DATE: 10/28/92	SPACER INSTRUCTIONS	
APPROVED:	DATE:	SCALE: 1:10	DRAWING TYPE: INSTALLATION
1455 KLEPPE LANE		SIZE: A	SHEET 1 OF 1
SPARKS, NEVADA 89431		PART NUMBER 0002082219	
(775) 359-4712 FAX (755) 359-7424		DRAWING NO. 08292C001	
E-MAIL: HAWS@HAWSCO.COM		REV	
WEBSITE: WWW.HAWSCO.COM		5	