



INSTALLATION, OPERATION & MAINTENANCE INSTRUCTIONS

1455 Kleppe Lane ♦ Sparks, NV 89431-6467 ♦ (775) 359-4712 ♦ Fax (775) 359-7424
E-mail: haws@hawsco.com ♦ website: www.hawsco.com

No. 0002077650 (10)

5874PB/5874PBF/VRK5874/VRK5874HF/ PBA6/PBA6C/PBA7/PBA7C Valve/Push Button

NOTE TO INSTALLER: Please leave this information with the Maintenance Department.

LIMITED WARRANTY

HAWS warrants that this specific product is guaranteed against defective material or poor workmanship for a period of **one year from date of shipment**. HAWS liability under this warranty shall be discharged by furnishing without charge F.O.B. HAWS Factory any goods, or part thereof, which shall appear to the Company upon inspection to be of defective material or not of first class workmanship, provided that claim is made in writing to Haws within a reasonable period after receipt of the product. Where claims for defects are made, the defective part or parts shall be delivered to the Company, prepaid, for inspection. HAWS will not be liable for the cost of repairs, alterations or replacements, or for any expense connected therewith made by the owner or his agents, except upon written authority from HAWS, Sparks, Nevada. HAWS will not be liable for any damages caused by defective materials or poor workmanship, except for replacements, as provided above. Buyer agrees that HAWS shall not be liable for general, special, or consequential damages claimed to arise under the contract of sale. The drinking fountain manufactured by HAWS is warranted to function if installation and maintenance instructions provided are adhered to. The units also must be used for the purpose for which they were intended.

**NO OTHER WARRANTIES EXPRESSED OR IMPLIED ARE AUTHORIZED,
PROVIDED OR GIVEN BY HAWS.**

**SHOULD YOU EXPERIENCE DIFFICULTY WITH THE INSTALLATION OF THIS
MODEL PLEASE CALL:**

TECHNICAL SUPPORT: 1-800-766-5612

FOR CUSTOMER SERVICE: 1-888-640-4297

Note:

1. Before removing valve, strainer or cartridge assembly, shut off water supply line.
2. This valve is pressure compensating. Be sure to remove any existing flow control devices. (May be present in fitting or SPUD).
3. Verify that new valve will fit in place of the older 5871 and 5872 series valves. Contact Haws technical support, if needed.
4. When retrofitting an existing fountain with a 5874 series valve:
 - a) Remove any in-line strainer that may be present in the supply line,
 - b) Verify if unit requires a high flow cartridge. If so, follow notes on Page 4 of 6.
 - c) Valve is directional. Verify flow direction indicated on valve when installing.
 - d) Reconnect tubing to new valve using your existing fittings.

Caution: Valve must be protected by a 60-mesh strainer LOCATED INSIDE VALVE BODY.

WARRANTY VOID IF 60-MESH STRAINER IS REMOVED FROM VALVE BODY.

OPERATION & MAINTENANCE OF FRONT ACCESS FEATURES

FLOW ADJUSTMENT: A 3/16" hole in the center of this button is provided for front access to the adjustment screw found on the cartridge assembly. While pushing the button in and using a slotted narrow blade screwdriver, the flow may be adjusted by inserting it into the hole and turning clockwise for increased flow, and counterclockwise for decreased flow.

STRAINER CLEANING: Periodically clean the strainer **located inside valve body**. Remove front push-button and retaining nut with the universal spanner wrench provided. Pull cartridge assembly out. Gently remove strainer off of cartridge. Thoroughly flush away any debris from strainer. Ensure that both the gasket on cartridge and strainer gasket are very clean with no debris whatsoever, then re-attach strainer by aligning larger hole opening on gasket over the larger water inlet opening on the cartridge (Don't remove gasket that comes with cartridge). Make sure there is no debris in the valve body before inserting the cartridge assembly back into the valve body. When inserting cartridge assembly, align strainer with large hole in the valve body, ensure the cartridge has bottomed out by turning slightly into place. Install retaining nut until it makes contact with the cartridge, then tighten 1 1/4 turn farther; check for leaks. Reassemble push button per Steps 5, 6, 7 & 10 of installation instructions on Pages 5 & 6.

CARTRIDGE ASSEMBLY REPLACEMENT: Remove front push-button and retaining nut with the universal spanner wrench provided. Pull cartridge assembly out. Gently remove strainer off of old cartridge and reassemble on new cartridge (Don't remove gasket that comes with cartridge) (See strainer reattachment instructions above). Insert cartridge assembly into valve body by aligning screen into large opening inside bottom of valve body. Ensure cartridge has bottomed out, by turning slightly into place. Install retaining nut until it makes contact with the cartridge, then tighten 1 1/4 turn farther; check for leaks. Reassemble push button per Steps 5, 6, 7 & 10 of installation instructions on Pages 5 & 6.

STRAINER GASKET REPLACEMENT: Remove front push button and retaining nut with the universal spanner wrench provided. Pull cartridge assembly out. Gently remove strainer off of cartridge. Ensure that the gasket on the cartridge is very clean with no debris. Attach new strainer gasket to cartridge (Don't remove gasket that comes with cartridge) by aligning larger hole opening on gasket over the larger water inlet opening on the cartridge. Make sure there is no foreign matter in the valve body before inserting the cartridge assembly back into the valve body. When inserting cartridge assembly, align strainer with large hole in the valve body. Ensure the cartridge has bottomed out by turning slightly into place. Install retaining nut until it makes contact with the cartridge, then tighten 1 1/4 turn farther.

CAUTION: When replacing strainer or cartridge assembly, damage can occur if not properly re-installed. Read instructions carefully.

PBA6C & PBA7C CLEANING & CARE: If evidence of copper oxidation arises, simply rub surface with a soft rag and salt & water mixture. Soft cleaning solutions may also be used on the copper button surface.

PUSH BUTTON ASSEMBLY/REASSEMBLY

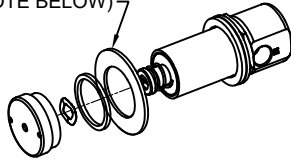
Must apply 1 Dot of Loctite 222MS Threadlocker on female threads of push-button. Carefully follow Steps 5, 6, 7 & 10 on installation drawing (Pages 5 & 6) to ensure proper reassembly.

TROUBLESHOOTING		
PROBLEM	REPAIR CHECKLIST	
1. Insufficient water flow.	1a.	Check that the inlet screwdriver stop is in wide open position.
	b.	Verify that correct valve cartridge is being utilized for your application. Models 1920/1920HPS/1920W 1025/1025G 3300/3300G (equipped with a pop-up bubbler head Model 5725) & any models that feature a cuspidor (i.e. 2406, etc.) require a high flow cartridge (P/N 0001632151) to ensure proper flow stream height. All other models utilize a standard flow cartridge.
	c.	Adjust bubbler stream height. See Flow Adjustment instructions in Front Access Feature Box.
	d.	Verify flow direction indicated on valve.
	e.	Verify that wave washer is in place and that push button is properly adjusted per Steps 5 & 7 of installation drawing (Pages 5 & 6).
	f.	Shut off screwdriver stop (not supplied), clean the fine mesh strainer found inside the 5874 series valve. See Strainer Cleaning instructions in Front Access Feature Box.
	g.	Verify minimum 30 psi flowing supply pressure.
	h.	Shut off screwdriver stop and replace cartridge assembly. See Cartridge Assembly Replacement instructions in Front Access Feature Box.
2. Water flow too high.	2a.	See steps 1b, 1c or 1e above.
3. Valve won't shut off completely	3a.	Cycle the cartridge assembly by pushing the push-button 5 times to clear any foreign matter (if any is present) from the valve seat.
	3b.	Shut off screwdriver stop. Replace cartridge assembly. See Cartridge Assembly Replacement instructions in Front Access Feature Box.
4. No flow out of valve.	4a.	Check that the inlet screwdriver stop is in wide open position.
	b.	Verify flow direction indicated on valve.
	c.	Check strainer for possible clogging (see 1f above).
5. Inconsistent bubbler stream height.	5a.	See 1f above
6. Button is loose	6a.	Refer to Installation Drawing Steps 5, 6, 7 & 10 on Pages 5 & 6 for proper application of Threadlocker 222MS and assembly procedure.
7. Water is leaking out of push button assembly.	7a.	Remove push button with spanner wrench (P/N 0006983506) and tighten retaining nut using same spanner wrench.
	b.	If leak persist, shut off screwdriver stop and replace cartridge assembly. See Cartridge Assembly Replacement instructions in Front Access Feature Box.

For more information about Haws products, see our website: www.hawsc.com

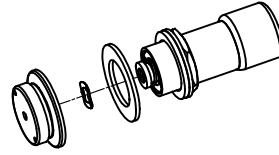
PARTS BREAKDOWN

*** OPTIONAL PCP WASHER FOR FLUSH MOUNT SURFACES (SEE NOTE BELOW)



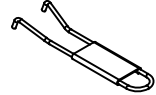
5874PB [1] [4]

POLISHED CHROME PLATED PUSH BUTTON WITH VALVE FOR BOTH RECESSED AND FLUSH MOUNT SURFACES. (ALSO USED FOR REPLACEMENT OF OLDER VALVE MODELS 5871, 5872, AND 5872HF - SEE NOTE 4.)

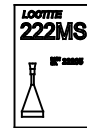


5874PBF [1]

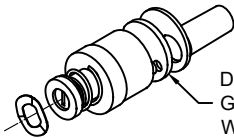
POLISH CHROME PLATED FLANGE PUSH BUTTON WITH VALVE FOR FLUSH MOUNT SURFACES ONLY.



0006983506
SPANNER WRENCH
(ONLY INCLUDED WITH MODELS: 5874PB & 5874PBF)



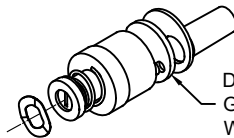
0003244389
THREADLOCKER TO SECURE PUSH BUTTON
(ONLY INCLUDED W/PB SERIES)



VRK5874 [1] [2]

VALVE REPAIR KIT
(STANDARD FLOW)

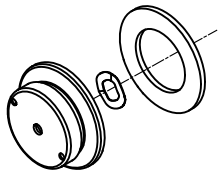
DO NOT REMOVE GASKET WHICH COMES WITH CARTRIDGE.



VRK5874HF [2] [3] [5]

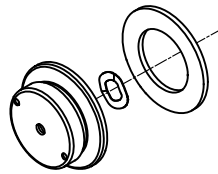
VALVE CARTRIDGE
(HIGH FLOW)

DO NOT REMOVE GASKET WHICH COMES WITH CARTRIDGE.



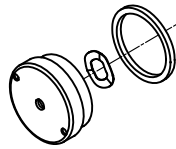
PBA6

POLISHED CHROME PLATED FLANGED PUSH BUTTON FOR FLUSH MOUNT SURFACES ONLY.



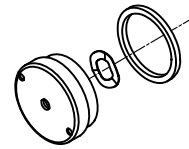
PBA6C

COPPER PLATED PUSH BUTTON WITH CHROME FLANGE FOR FLUSH MOUNT SURFACES ONLY.



PBA7

POLISHED CHROME PLATED PUSH BUTTON FOR BOTH RECESSED AND FLUSH MOUNT SURFACES.



PBA7C

COPPER PLATED PUSH BUTTON WITH CHROME OPERATOR FOR BOTH RECESSED AND FLUSH MOUNT SURFACES.



*** IF NEEDED, USE 1-3/4" O.D. X .050 THICK PCP WASHER PN 0006729529 (NOT SUPPLIED) IN SITUATIONS WHERE THE PUSH BUTTON HOLE IS SLIGHTLY OVERSIZED FOR THE 5874PB RING NUT.



0002568123 [3]
GASKET W/SCREEN



0006626653

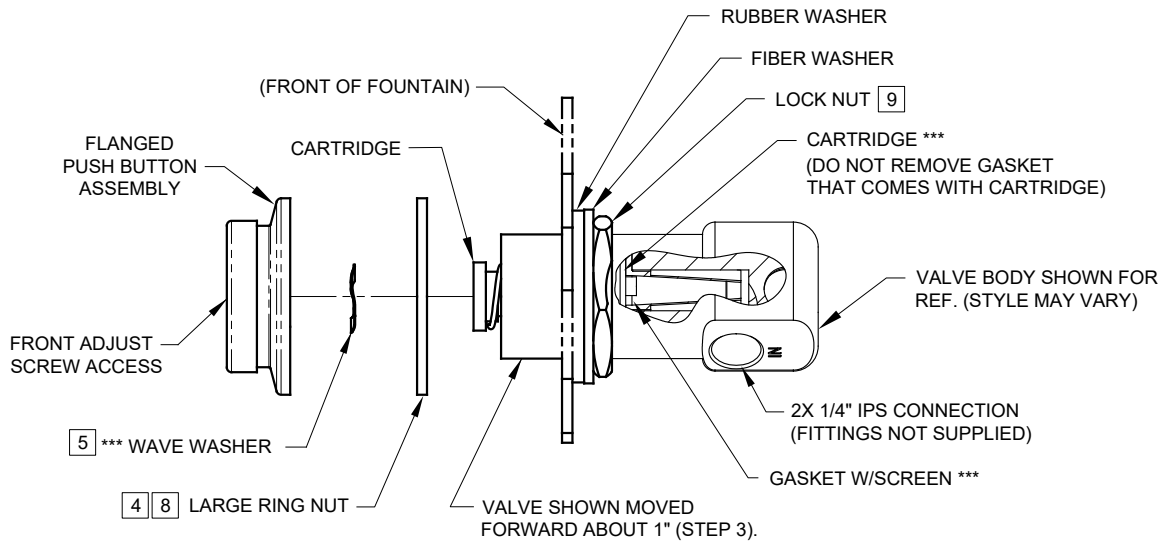
WAVE WASHER FOR USE WITH BOTH RECESSED AND FLANGED STYLE PUSH BUTTON ASSEMBLIES. (MUST BE IN PLACE FOR PROPER PUSH BUTTON OPERATION)

NOTES:

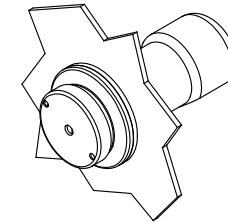
- [1] **MODELS 5874PB, 5874PBF, AND VRK5874 ARE EQUIPPED WITH A STANDARD FLOW CARTRIDGE.** ORDER THESE MODELS WHEN REPLACING/REPAIRING VALVES WITH A STANDARD FLOW APPLICATION. **DO NOT USE ON ANY MODELS THAT FEATURE A CUSPIDOR OR HAVE A HIGH FLOW APPLICATION WITHOUT IMPLEMENTING ADDITIONAL REQUIRED STEPS (SEE NOTES 2 AND 3).**
- [2] **MODELS 1025/G AND 3300/G EQUIPPED WITH A POP-UP BUBBLER HEAD (MODEL 5725) AND MODEL VRK5874HF, 2406 (EQUIPPED WITH A CUSPIDOR) AND 1920 SERIES BOTTLE FILLER MODELS ALL UTILIZE A HIGH FLOW CARTRIDGE TO ENSURE PROPER FLOW.**
- [3] **WHEN REPLACING A HIGH FLOW CARTRIDGE ASSEMBLY, DO NOT USE VRK5874; USE VRK5874HF.**
- [4] **FOR VALVE REPLACEMENT ON UNITS WITH OLDER 5871, 5872 (STANDARD FLOW) AND 5872HF (HIGH FLOW) VALVES:** CONTACT HAWS TECHNICAL SUPPORT.
- [5] **VRK5874HF IS ALSO USED ON 1920 SERIES BOTTLE FILLER MODELS (SEE NOTE 2).**

WHEN ORDERING PARTS PLEASE SPECIFY MODEL NUMBER.

		Haws [®]		1455 KLEPPE LANE SPARKS, NEVADA 89431 (775) 359-4712 FAX (775) 359-7424 E-MAIL: HAWS@HAWSCO.COM WEBSITE: WWW.HAWSCO.COM	
				ECN NO. 4250 ECN: 5664 FV	MODEL(S) 5874PB/5874PBF/VRK5874/VRK5874HF/ PBA6/PBA6C/PBA7/PBA7C
DRAWN LM DATE 06/08/16 CHKD JL	APPROVED FV DATE 03/02/21	SCALE: NA DRAWING TYPE: PARTS BREAKDOWN	REVISION 10		
		SIZE: A	SHEET 1 OF 1		



*** MODEL VRK5874 & VRK5874HF- VALVE REPAIR KITS INCLUDE THESE ITEMS



ASSEMBLED 5874PBF
(FLUSH MOUNT APPLICATION ONLY)

SEE SHEET 2 OF 2 FOR 5874PB RECESSED MOUNT INSTRUCTIONS.

INSTALLATION INSTRUCTIONS FOR 5874PBF.

- 1) FOLLOW INSTRUCTIONS CAREFULLY ON O&M MANUAL (PAGE 2 OF 6) WHEN REMOVING OLD VALVE. **NOTE: SEE PARTS BREAKDOWN (PAGE 4 OF 6) FOR ADDITIONAL NOTES.**
- 2) VERIFY THAT LOCK NUT, FIBER, AND RUBBER WASHERS ARE POSITIONED SLIGHTLY PAST MIDWAY OF THREADS ON NEW VALVE BODY.
- 3) INSERT VALVE INTO BRACKET FROM INSIDE AND PUSH FORWARD ABOUT 1".
- [4] THREAD LARGE RING NUT ONTO VALVE BODY, APPROXIMATELY 1" INTO VALVE.
- [5] PLACE WAVE WASHER INSIDE OF FLANGED PUSH BUTTON ASSEMBLY (**MUST BE IN PLACE**).
- [6] APPLY ONE (1) DOT OF LOCTITE 222MS, ON THE FEMALE THREADS OF BUTTON ASSEMBLY LEAVING THE FIRST AND LAST THREADS FREE. (FIGURE 1). **CAUTION: EXCESS LOCTITE CAN CAUSE THREADS TO LOCK VERY TIGHTLY, MAKING REPAIRS DIFFICULT.**
- **7) THREAD FLANGED PUSH BUTTON ASSEMBLY ON VALVE UNTIL WAVE WASHER MAKES SLIGHT CONTACT WITH STEM OF CARTRIDGE. **CAUTION: DO NOT HAND-TIGHTEN.**
- [8] UNTHREAD RING NUT FORWARD UNTIL IT STOPS FLUSH WITH PUSH BUTTON ASSEMBLY.
- [9] PUSH VALVE BACK TOWARD THE INSIDE OF BRACKET AND TIGHTEN LOCKNUT (SEE ILLUSTRATION ABOVE).
- 10) TIGHTEN PUSH BUTTON ASSEMBLY USING UNIVERSAL SPANNER WRENCH PROVIDED.

** OVERTIGHTENING WILL PRE-ACTUATE VALVE AND CAUSE WEEPAGE, WHILE NOT ENOUGH CONTACT BETWEEN WAVE WASHER AND STEM CAN CAUSE A LOW FLOW CONDITION.

* [6] APPLY 1 DOT OF LOCTITE 222MS (WHERE SHOWN)

* THIS ALSO APPLIES TO PBA6/PBA6C

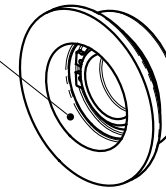
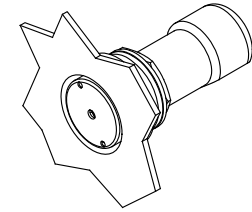
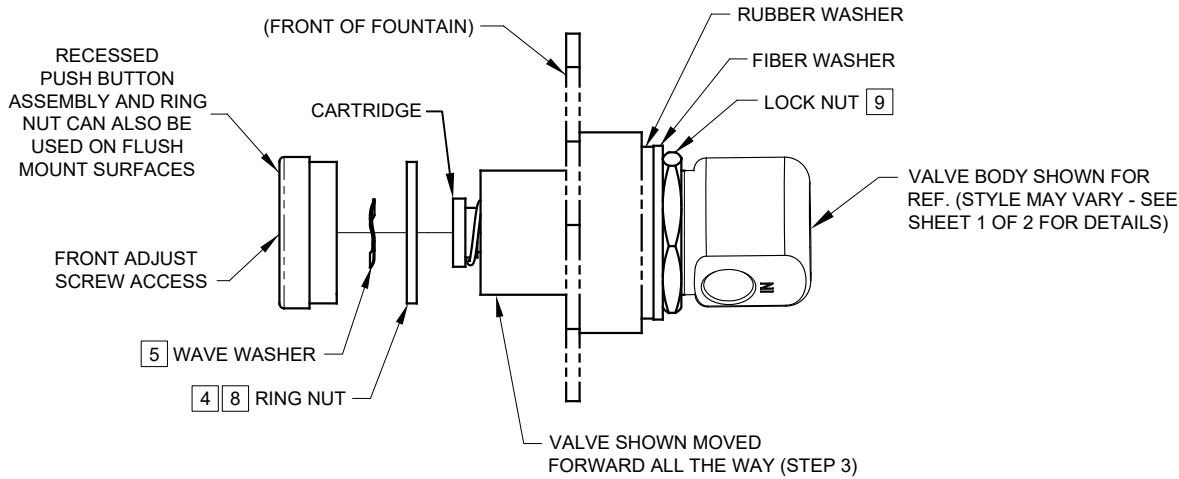


FIGURE 1

NOTE!

THIS VALVE IS PRESSURE COMPENSATING. BE SURE TO REMOVE ANY EXISTING FLOW CONTROL DEVICES. (MAY BE PRESENT IN FITTING OR SPUD).

		1455 KLEPPE LANE SPARKS, NEVADA 89431 (775) 359-4712 FAX (775) 359-7424 E-MAIL: HAWS@HAWS.CO.COM WEBSITE: WWW.HAWS.CO.COM	
ECN NO. 4250	REVISED PER ECN: 5664	BY: FV	MODEL(S)
DRAWN: LM	DATE: 06/08/16	CHK'D: JL	5874PB/5874PBF/VRK5874/VRK5874HF/ PBA6/PBA6C/PBA7/PBA7C
APPROVED: FV	DATE: 03/02/21	SCALE: NA	DRAWING TYPE: INSTALLATION
			PART NUMBER 0002077650.D REVISION 10
			SIZE: A SHEET 1 OF 2



ASSEMBLED 5874PB
(RECESSED MOUNT APPLICATION SHOWN)

SEE SHEET 1 OF 2 FOR FLUSH MOUNT INSTRUCTIONS.

INSTALLATION INSTRUCTIONS FOR 5874PB.

- 1) FOLLOW INSTRUCTIONS CAREFULLY ON O&M MANUAL (PAGE 2 OF 6) WHEN REMOVING OLD VALVE. **NOTE: SEE PARTS BREAKDOWN (PAGE 4 OF 6) FOR ADDITIONAL NOTES.**
 - 2) VERIFY THAT LOCK NUT, FIBER WASHER, AND RUBBER WASHERS ARE POSITIONED TOWARD BOTTOM END OF THREADS ON NEW VALVE BODY.
 - 3) INSERT VALVE INTO BRACKET FROM INSIDE, AND PUSH ALL THE WAY FORWARD (SEE ILLUSTRATION ABOVE).
 - 4) THREAD RING NUT ONTO VALVE BODY, AS FAR IN AS POSSIBLE, TOWARD FRONT OF FOUNTAIN. **NOTE: IF REPLACING A 5871 OR 5872 SERIES VALVE, YOU MAY HAVE TO CONTACT HAWS TECHNICAL SUPPORT.**
 - 5) PLACE WAVE WASHER INSIDE OF PUSH BUTTON ASSEMBLY (**MUST BE IN PLACE**).
 - 6) APPLY ONE (1) DOT OF LOCTITE 222MS, ON THE FEMALE THREADS OF BUTTON ASSEMBLY LEAVING THE FIRST AND LAST THREADS FREE. (FIGURE 1). **CAUTION: EXCESS LOCTITE CAN CAUSE THREADS TO LOCK VERY TIGHTLY, MAKING REPAIRS DIFFICULT.**
 - **7) THREAD PUSH BUTTON ASSEMBLY ON VALVE UNTIL WAVE WASHER MAKES SLIGHT CONTACT WITH STEM OF CARTRIDGE. **CAUTION: DO NOT HAND-TIGHTEN.**
 - 8) UNTHREAD RING NUT FORWARD UNTIL IT STOPS FLUSH WITH PUSH BUTTON ASSEMBLY.
 - 9) PUSH VALVE BACK TOWARD THE INSIDE OF BRACKET AND TIGHTEN LOCKNUT (SEE ILLUSTRATION ABOVE).
 - 10) TIGHTEN PUSH BUTTON ASSEMBLY USING UNIVERSAL SPANNER WRENCH PROVIDED.
- ** OVERTIGHTENING WILL PRE-ACTUATE VALVE AND CAUSE WEEPAGE, WHILE NOT ENOUGH CONTACT BETWEEN WAVE WASHER AND STEM CAN CAUSE A LOW FLOW CONDITION.

* 6) APPLY 1 DOT OF LOCTITE 222MS (WHERE SHOWN)

* THIS ALSO APPLIES TO PBA7/PBA7C

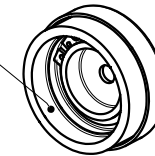


FIGURE 1

NOTE!

THIS VALVE IS PRESSURE COMPENSATING. BE SURE TO REMOVE ANY EXISTING FLOW CONTROL DEVICES. (MAY BE PRESENT IN FITTING OR SPUD).

		1455 KLEPPE LANE SPARKS, NEVADA 89431 (775) 359-4712 FAX (775) 359-7424 E-MAIL: HAWS@HAWS.CO.COM WEBSITE: WWW.HAWS.CO.COM	
ECN NO. 4250	REVISED PER ECN: 5664	BY: FV	MODEL(S)
DRAWN: LM	DATE: 08/08/16	CHK'D: JL	5874PB/5874PBF/VRK5874/VRK5874HF/ PBA6/PBA6C/PBA7/PBA7C
APPROVED: FV	DATE: 03/02/21	SCALE: NA	DRAWING TYPE: INSTALLATION
			PART NUMBER 0002077650.D REVISION 10
			SIZE: A SHEET 2 OF 2