



model 1001HPSMSHO-1920HPSHO

ADA Vandal-Resistant Motion-Activated Polished Fountain & Bottle Filler w/Mounting System

FEATURES & BENEFITS

CONSTRUCTION

Barrier-free design with an 18-gauge Type 304 polished finished stainless steel swirl bowl assembly mounted on a 14-gauge Type 304 polished stainless steel wall bracket. Unit includes an in-wall mounting frame, and front panel access for P-trap and stop.

BOTTLE FILLER

Vandal-resistant, 14-gauge Type 304 stainless steel bottle filler housing with touchless sensor operation and 1 gpm (3.78 L) laminar flow.

VANDAL RESISTANT

The bubbler head, sensor, round bowl, drain strainer and bottom plate are locked in place, discouraging unwanted vandal tampering, and 30-second obstruction time-out to reduce tampering of sensor.

BUBBLER HEAD

Polished chrome-plated brass bubbler head with integral laminar flow prevents splashing while providing a superior flow pattern. The integral 11/16" dia. basin shank and stainless anti-rotation roll pin for vandal resistance strength. Shielded, angled stream opening provides a steady source of drinking water at .45 gpm.

FOUNTAIN VALVES

Fountain incorporates touchless sensor operated stainless steel solenoid valves controlled by a transformer for hands-free operation. A pressure regulator is used to adjust the bubbler flow according to incoming water pressures.

MOUNTING

Galvanized frame and 10 gauge surface plate provide the maximum mounting strength for single bubbler drinking fountains.

OPTIONS

- Mounting Plate: Model 6700, in-wall mounting plate for model 1920HPSHO.
- Mounting Plate: Model 6700R, on-wall mounting plate for model 1920HPSHO.
- Remote Drinking Fountain Water chiller: Model HCR8, 8 gph (30.3 L) remote water chiller provides instantaneous cooling to meet a continuous demand for chilled water.
- Water Filter: Model 6426, 10" x 2" (25.4 x 5.1 cm), in-line lead removal element that reduces lead from incoming water supply.

For more information, visit www.hawsco.com or call (888) 640-4297.



REQUIRED MODELS

1001HPSMSHO / MTGFR.DF1 / 1920HPSHO / BP15HPS

Order these items to make up the Model 1001HPSMSHO -1920HPSHO fountain with polished stainless steel back panel, bottle filler with polished stainless steel back plate, and fountain mounting frame shown above.

FOR INDOOR USE ONLY

SPECIFICATIONS

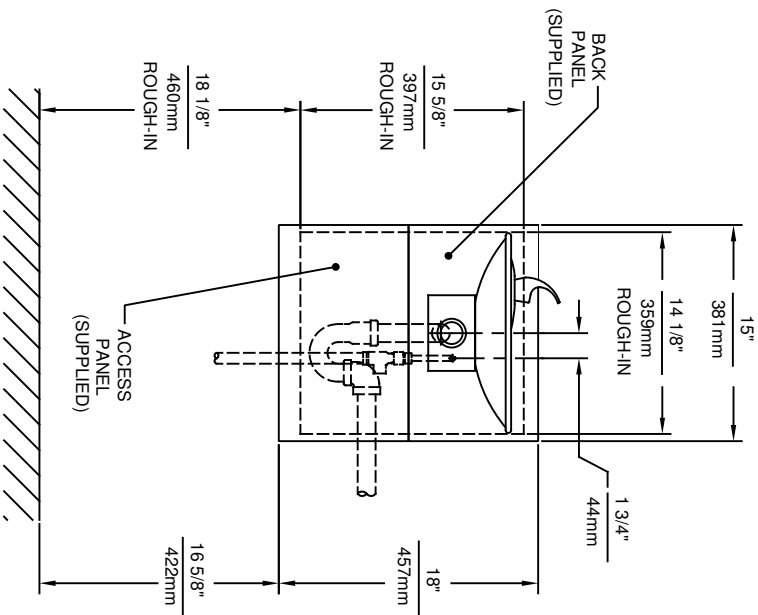
Model 1001HPSMSHO-1920HPSHO ADA vandal-resistant wall mounted motion activated drinking fountain and bottle filler shall include an 18 gauge Type 304 high-polished stainless steel basin with integral swirl design, 14 gauge Type 304 high-polished stainless steel wall bracket and bottle filler bracket, polished stainless steel satin finish back and access panels allowing for front access of P-trap and stop, in-wall mounting frame, 100% lead-free waterways, 1 gpm (3.78L) laminar flow bottle filler, touchless sensor operated stainless steel solenoid valves with 30-second obstruction time-out controlled by a transformer, polished chrome-plated brass vandal-resistant bubbler head with integral laminar anti-squirt flow, chrome-plated brass vandal-resistant waste strainer, vandal-resistant bottom plates, and 1-1/4"O.D. (3.2cm) waste pipe. Manufactured to be lead-free by all known definitions including NSF/ANSI/CAN 61-Section 9, NSF/ANSI/ CAN 372, California Proposition 65, and the Federal Safe Drinking Water Act. Product is compliant to California Health and Safety Code 116875 (AB 1953-2006), and 116876 (AB 100) "NSF/ANSI/CAN 61: Q ≤ 1".

The bottle filler requires a mounting plate; either the Haws model 6700 in-wall or the 6700R on-wall support plate.

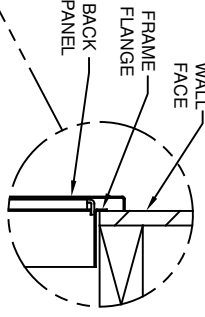
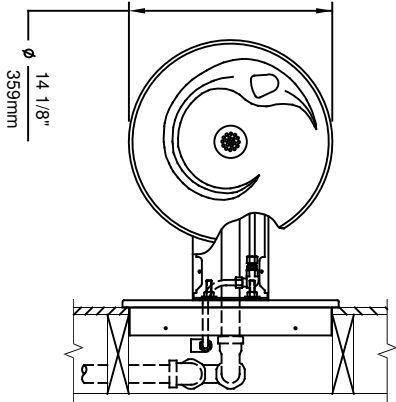
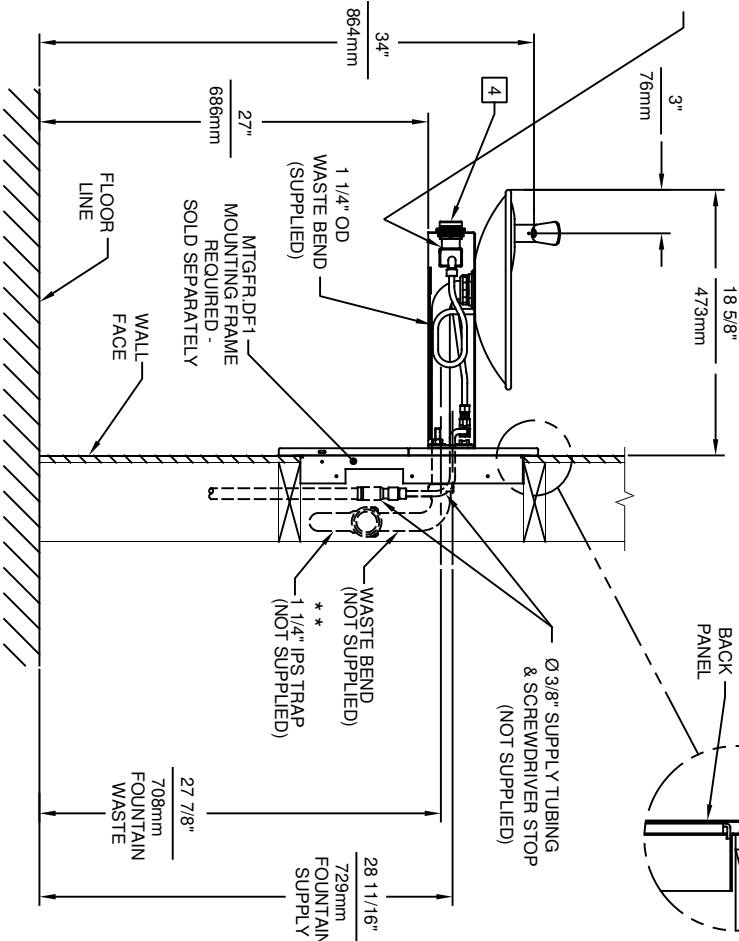


NOTES:

1. HOLD ROUGH-IN DIMENSIONS $\pm 1/8"$ (3.2mm).
2. WHEN INSTALLING THIS UNIT, LOCAL, STATE, OR FEDERAL CODES SHOULD BE ADHERED TO FOR INSTALLATION DIMENSIONS (LOCATIONS), WASTE AND SUPPLY REQUIREMENTS OTHER THAN SHOWN.
3. ** INSTALLER MUST PROVIDE TRAP FOR PROPER INSTALLATION.
4. REFER TO 5874 SERIES OPERATION AND MAINTENANCE MANUAL FOR PUSH BUTTON AND VALVE INSTALLATION/MAINTENANCE INSTRUCTIONS.



REMOVE VALVE FROM PUSH
BUTTON TO INSTALL WASTE
ELBOW ONTO BOWL. AFTER
WASTE ELBOW IS INSTALLED,
REINSTALL VALVE & ADJUST
FLOW



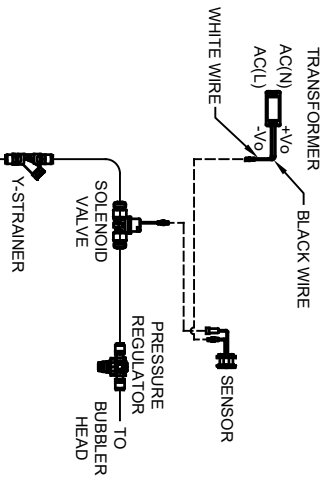
IMPORTANT: MOUNTING FRAME
MUST BE INSTALLED SO THAT
FRAME FLANGE BUTTS AGAINST
FINISHED WALL FACE.

Haws 1456 KLEPPE LANE
SPARKS, NEVADA, 89431
(775) 359-4712 FAX (775) 359-7424
E-MAIL: HAWS@HAWS.CO.COM
WEBSITE: WWW.HAWS.CO.COM

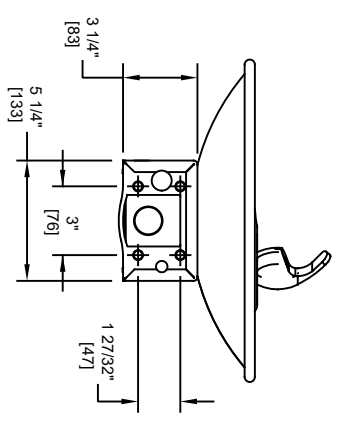
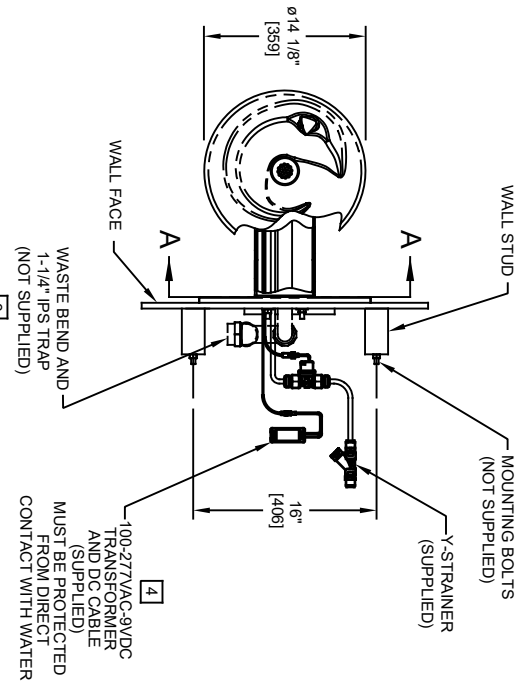
ECN NO. REVISED PERBY:	MODEL(S)
ECN 5527 FV	1001MS/1001HPSMS
DRAWN: DATE: CHKD:	PART NUMBER
PM 08/02/99 DP	0002076510.D
APPROVED: DATE:	REVISION
FV 04/02/20	10
SCALE: 1:14	DRAWING TYPE:
INSTALLATION	SIZE: A
SHEET 1 OF 1	

NOTES:

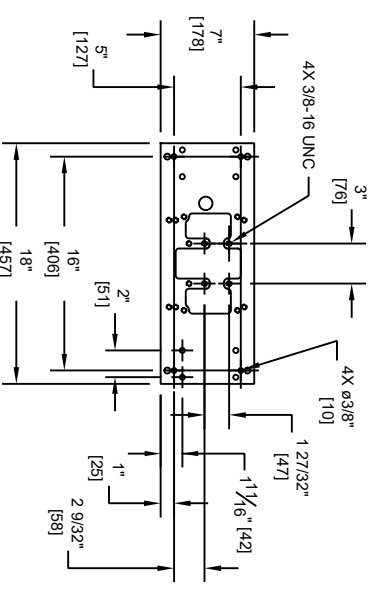
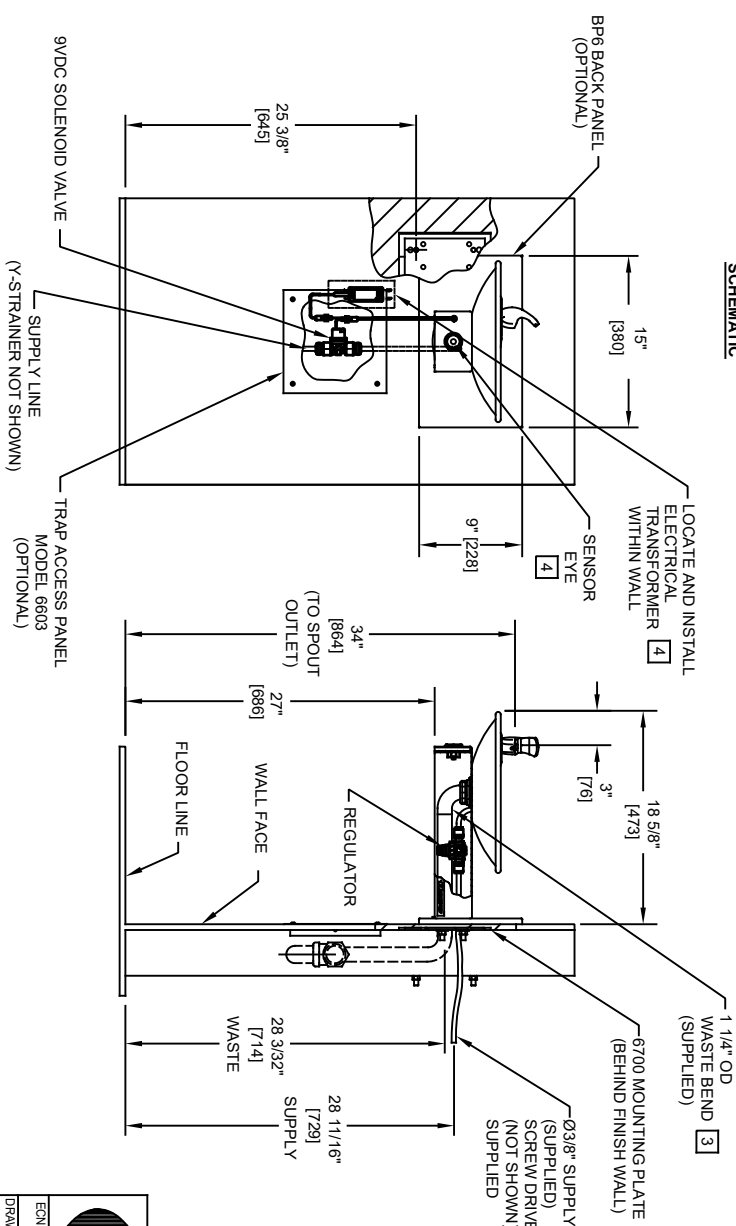
1. HOLD ROUGH-IN DIMENSIONS $\pm 1/8"$ (3.2mm).
2. WHEN INSTALLING THIS UNIT, LOCAL, STATE, OR FEDERAL CODES SHOULD BE ADHERED TO FOR INSTALLATION DIMENSIONS (LOCATIONS), WASTE AND SUPPLY REQUIREMENTS OTHER THAN SHOWN.
3. INSTALLER MUST PROVIDE TRAP FOR PROPER INSTALLATION.
4. REFER TO 1RKHO/H OPERATION AND MAINTENANCE INSTRUCTIONS FOR TRANSFORMER AND SENSOR SETUP.





FROM SUPPLY
Y-STRAINER
SENSOR WIRING / SUPPLY PLUMBING
SCHEMATIC



SECTION A-A
ROTATED 90° INTO VIEW
BRACKET MOUNTING
DETAIL



6700 MOUNTING PLATE
MUST BE INSTALLED BEFORE FINISH WORK
THIS PLATE IS REQUIRED - SOLD SEPARATELY.

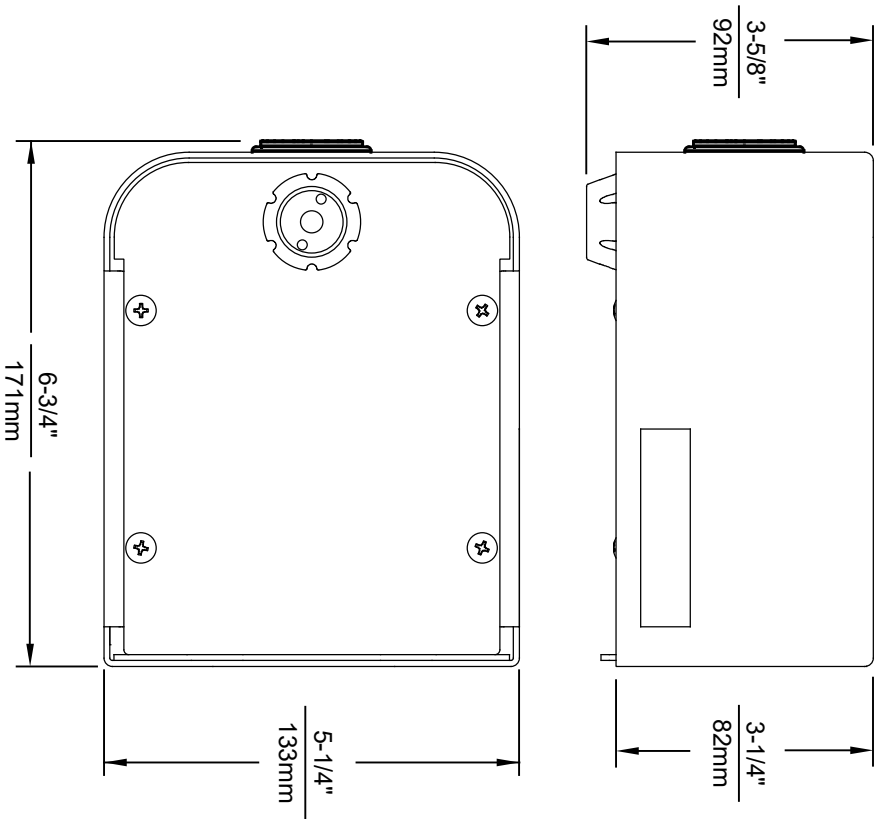


1456 KLEPPE LANE
SPARKS, NEVADA 89431
(775) 359-4712 FAX (775) 359-7424
E-MAIL: HAWS@HAWS.CO.COM
WEBSITE: WWW.HAWS.CO.COM

ECN NO.	REVISED PER:	MODEL(S)
ECN 5733	FV	1001HO
DRAWN:	DATE:	
FV	09/28/21	
APPROVED:	DATE:	
FV	09/30/21	
SCALE:	1:1	DRAWING TYPE:
INSTALLATION:		
SHEET:	1	OF:
1		

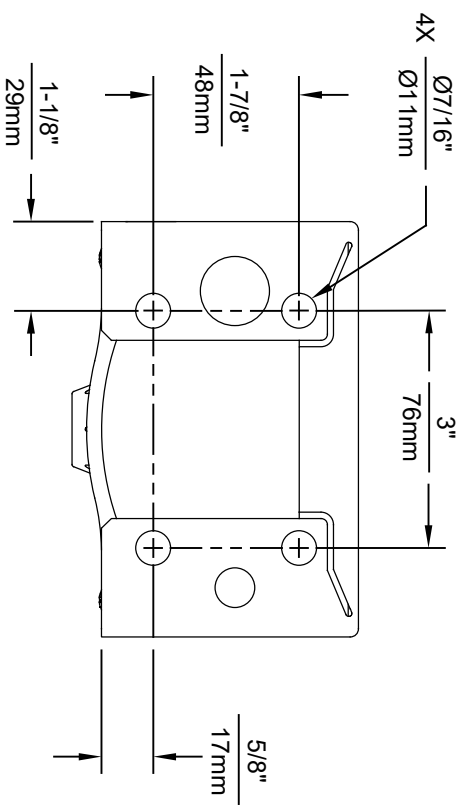
PART NUMBER
0510002020.D

REVISION
1

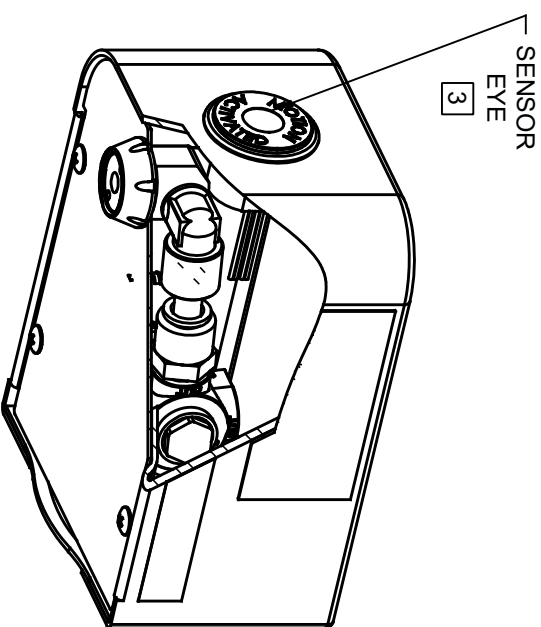



NOTES:

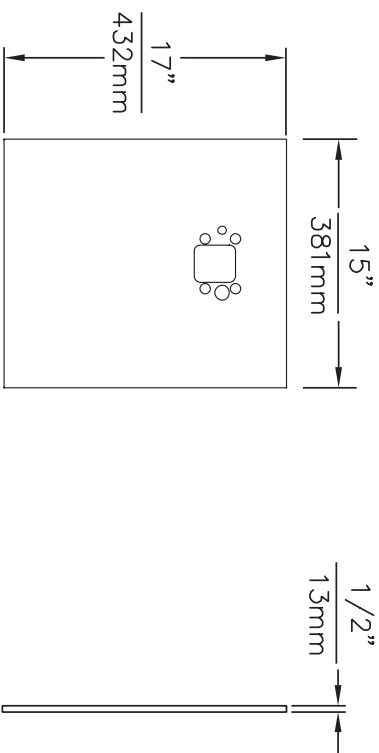
1. SEE SEPARATE INSTALLATION DRAWINGS FOR MOUNTING PLATES AND BACKPANELS
2. WHEN INSTALLING THIS UNIT, LOCAL, STATE OR FEDERAL CODES SHOULD BE ADHERED TO FOR INSTALLATION LOCATIONS, WASTE AND SUPPLY REQUIREMENTS OTHER THAN SHOWN.
- 3 REFER TO 1RKHO.H OPERATION & MAINTENANCE INSTRUCTIONS FOR SENSOR SETUP.



1920HO SERIES MOUNTING HOLE LOCATIONS
(3/8"-16 UNC MOUNTING HARDWARE NOT SUPPLIED)

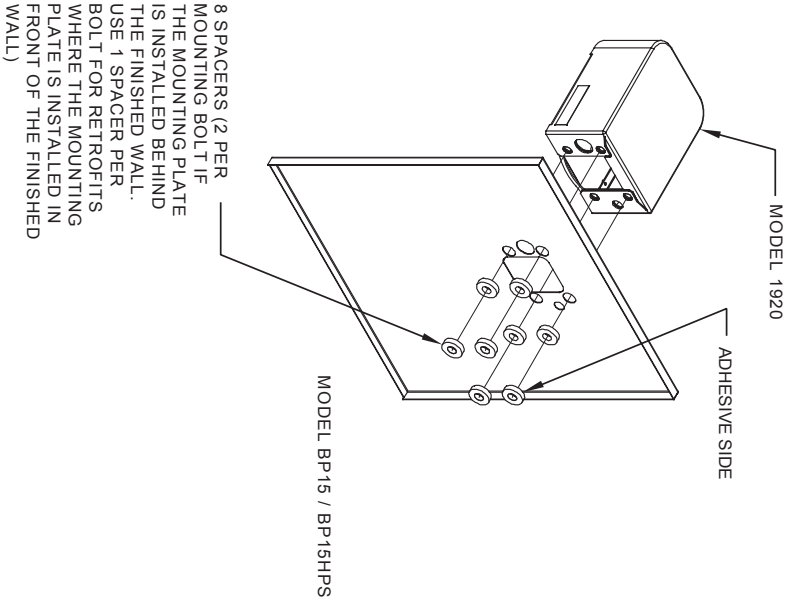


				1455 KLEPPE LANE SPARKS, NEVADA 89431 (775) 359-4712 FAX (775) 359-7424 E-MAIL: HAWS@HAWS.CO.COM WEBSITE: WWW.HAWS.CO.COM	
EQUIPMENT NO. 1920HO		MODEL(S) 1920HO/1920HPSHO/1920W		PART NUMBER 0510001063.D	
DRAWN BY [signature]		DATE 05/19/21		REVISION 4	
APPROVED BY [signature]		SCALE: 1/4" = 1"		SHEET 1 OF 6	





MODEL BP15 / BP15HPS

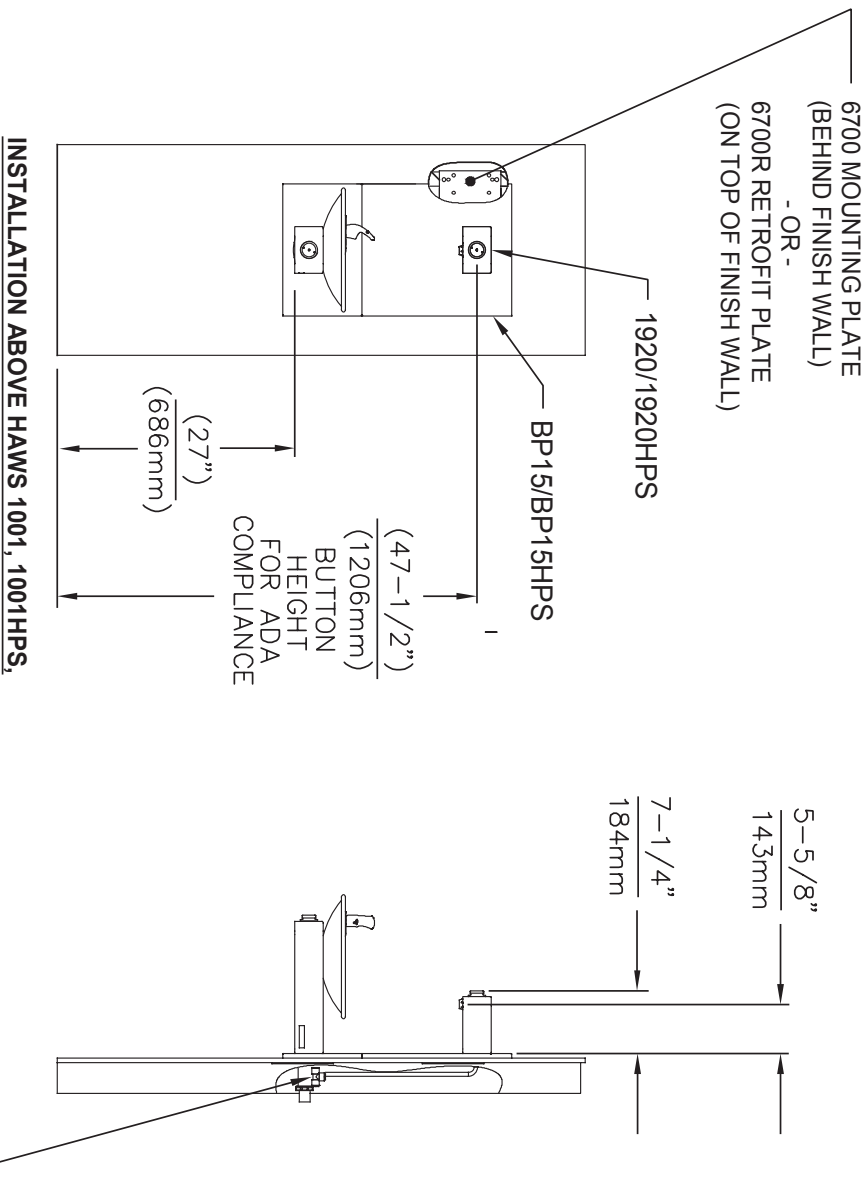
- NOTES:
1. WHEN INSTALLING THIS UNIT, LOCAL, STATE OR FEDERAL CODES SHOULD BE ADHERED TO.



INSTALLATION OVER SINGLE FOUNTAIN

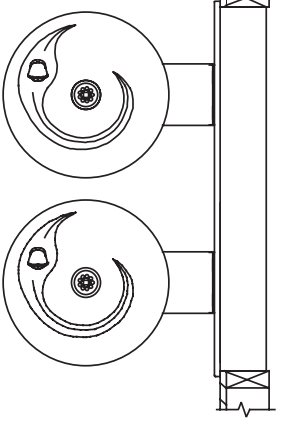
SHOWN FROM REAR

				1455 KLEPPE LANE SPARKS, NEVADA 89431 (775) 359-4712 FAX (775) 359-7424 E-MAIL: HAWS@HAWS.CO.COM WEBSITE: WWW.HAWS.CO.COM	
ECONO	REVISED PER BR:	MODEL(S)	MODEL 1001 AND 1001HPS	PART NUMBER	1001-20
DRAWN	DATE:	DATE:	DATE:	REVISION	0A.1
DESIGNED	DATE:	DATE:	DATE:		
APPROVED	DATE:	SCALE: 1:1	DRAWING TYPE: INSTALLATION	SIZE: A	SHEET 2 OF 2



* IF YOUR FOUNTAIN IS THIS STYLE USE
THESE DIMENSIONS

1. SEE SEPARATE INSTALLATION DRAWINGS
FOR MOUNTING PLATES AND BACKPANELS
2. WHEN INSTALLING THIS UNIT, LOCAL,
STATE OR FEDERAL CODES SHOULD
BE ADHERED TO FOR INSTALLATION
LOCATIONS, WASTE & SUPPLY
REQUIREMENTS OTHER THAN SHOWN.



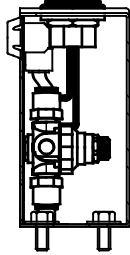
1455 KLEPPE LANE
SPARKS, NEVADA 89431
(775) 359-4712 FAX (775) 359-7424
E-MAIL: HAWS@HAWSCO.COM
WEBSITE: WWW.HAWSCO.COM

DRAWN BY: -		DATE: -		MODEL(S)	
G.C. 195317		G.C. 195317		MODEL 1001 AND 1001HPS	
APPROVED: -		DATE: -		WITH MODEL 1920 BOTTLE FILLER	
SCALE: N/A		DRAWING TYPE: INSTALLATION		PART NUMBER	
SIZE: A		SHEET: 1 OF 2		1001-20	
				REVISION	
				0A.1	

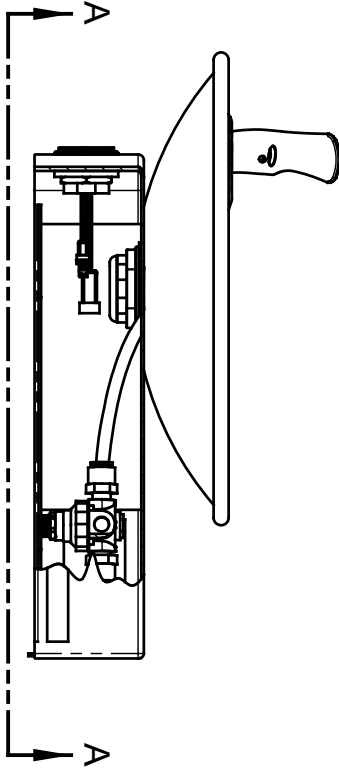
NOTES:

1. 2RKHO.P AND 2RKHO.H RETROFIT KITS ALLOW INDOOR FOUNTAINS TO BE CONVERTED FROM A HAWS 5874 PUSH BUTTON VALVE TO HANDS-OFF (TOUCHLESS) OPERATION.
FOUNTAINS (NOT SUPPLIED) MAY BE MOUNTED ON THE EXTERNAL WALL OF A BUILDING PROVIDED THE TRANSFORMER SHALL BE MOUNTED INSIDE THE WALL AND PROTECTED FROM WATER AS SHOWN IN THIS INSTALLATION PER NEC/CEC AND LOCAL CODE. AVOID DIRECT CONTACT WITH SUNLIGHT ON THE SENSOR LENS.
2. RETROFIT KIT MODEL:
2RKHO.P: INDOOR HO RETRO-FIT KIT (INCLUDES 2X HO SENSOR WITH MOUNTING HARDWARE, 2X SOLENOID VALVE, 2X REGULATOR, WIRE SPLITTER, AND 100-240V PLUG-IN TRANSFORMER - SEE SHEET 2).
2RKHO.H: INDOOR HO RETRO-FIT KIT (INCLUDES 2X HO SENSOR WITH MOUNTING HARDWARE, 2X SOLENOID VALVE, 2X REGULATOR, WIRE SPLITTER, AND 100-277V HARDWIRE TRANSFORMER - SEE SHEET 3).
3. 2RKHO.P REQUIRES 100-240VAC POWER CONNECTION. 2RKHO.H REQUIRES 100-277V POWER CONNECTION.
4. TRANSFORMERS MUST BE MOUNTED SUCH THAT THEY ARE PROTECTED FROM WATER.
5. 2RKHO.P TRANSFORMER IS COMPATIBLE WITH TYPE A AND TYPE B NORTH AMERICAN ELECTRICAL OUTLETS. FOR OTHER RECEPTACLE TYPES, AN ADAPTER (NOT SUPPLIED) MUST BE PROVIDED BY OTHERS.

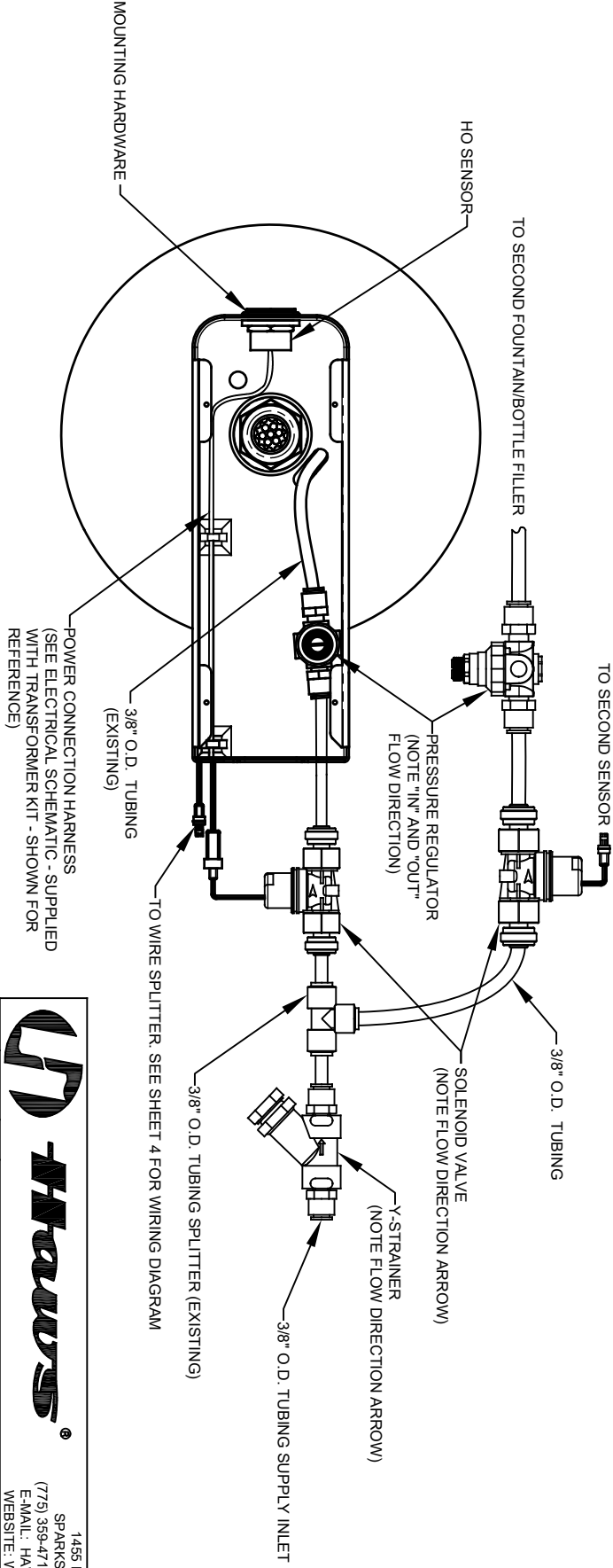
(NOTES CONTINUED ON SHEET 4)



EXAMPLE 1920 BOTTLE FILLER INSTALLATION



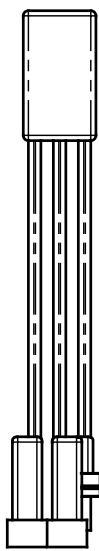
EXAMPLE 1011 FOUNTAIN INSTALLATION



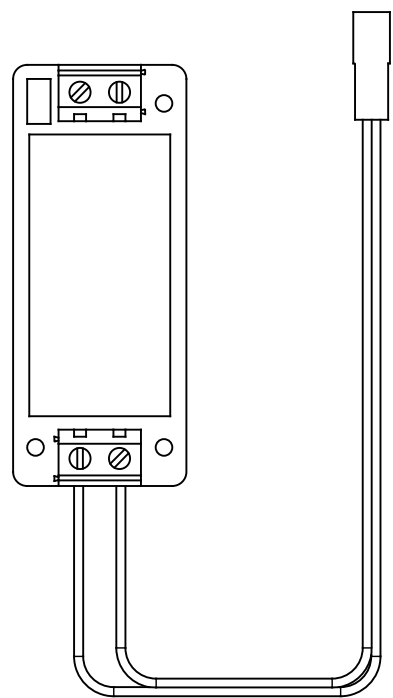
Haws

1456 KLEPPE LANE
SPARKS, NEVADA 89431
(775) 359-4712 FAX (775) 359-7424
E-MAIL: HAWS@HAWS.CO.COM
WEBSITE: WWW.HAWS.CO.COM

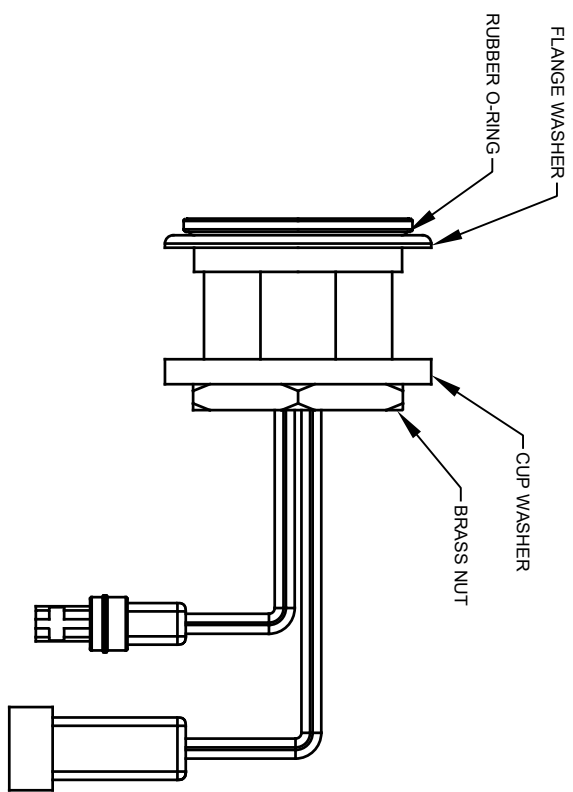
ECONO REVISED PERBY:		MODEL(S)		PART NUMBER	
5849	ECON. 5749	B.M.	2RKHO.P / 2RKHO.H	0580001156.D	
DRAWN:	DATE:	CHKD:			
B.M.	02/10/21	F.V.			
APPROVED:	DATE:	SCALE:	DRAWING TYPE:	INSTALLATION:	SIZE: A SHEET 1 OF 4
B.M.	10/20/21	N/A			



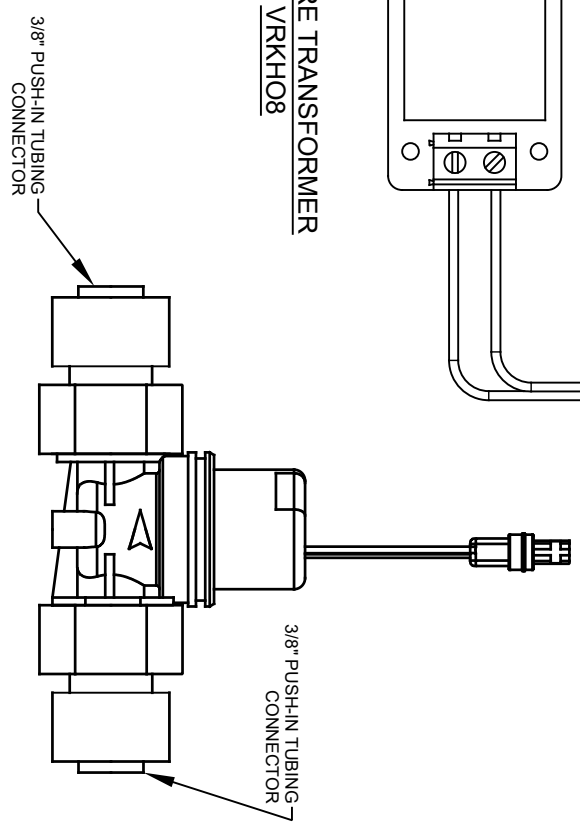
DUAL POWER SPLITTER



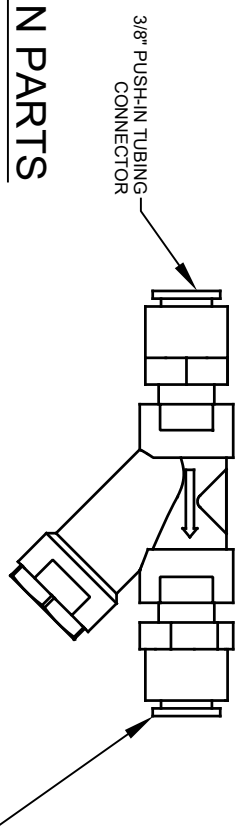
HARDWARE TRANSFORMER
VRKH08



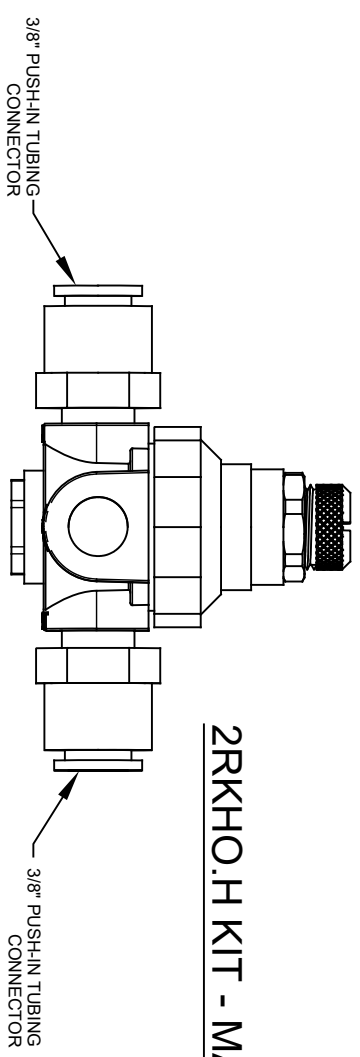
HO SENSOR ASSEMBLY (2X)
VRKH06



SOLENOID VALVE ASSEMBLY (2X)
VRKH05



Y-STRAINER
6433



VALVE REGULATOR (2X)
5867

2RKHO.H KIT - MAIN PARTS



1456 KLEPPE LANE
SPARKS, NEVADA 89431
(775) 359-4712 FAX (775) 359-7424
E-MAIL: HAWS@HAWS.CO.COM
WEBSITE: WWW.HAWS.CO.COM

ECN NO. REVISED PER BY:		MODEL(S)	
5849	ECN 5749 BJM	2RKHO.P / 2RKHO.H	
DRAWN: BJM	DATE: 02/10/21	DUAL HANDS-OFF RETRO-FIT KIT	
CHKD: BJM	DATE: 02/10/21	INSTALLATION	
APPROVED: BJM	DATE: 10/20/21	SCALE: N/A	
DRAWING TYPE:		SIZE: A	
SHEET: 3 OF 4		REVISION: 4	
PART NUMBER: 0580001156.D			