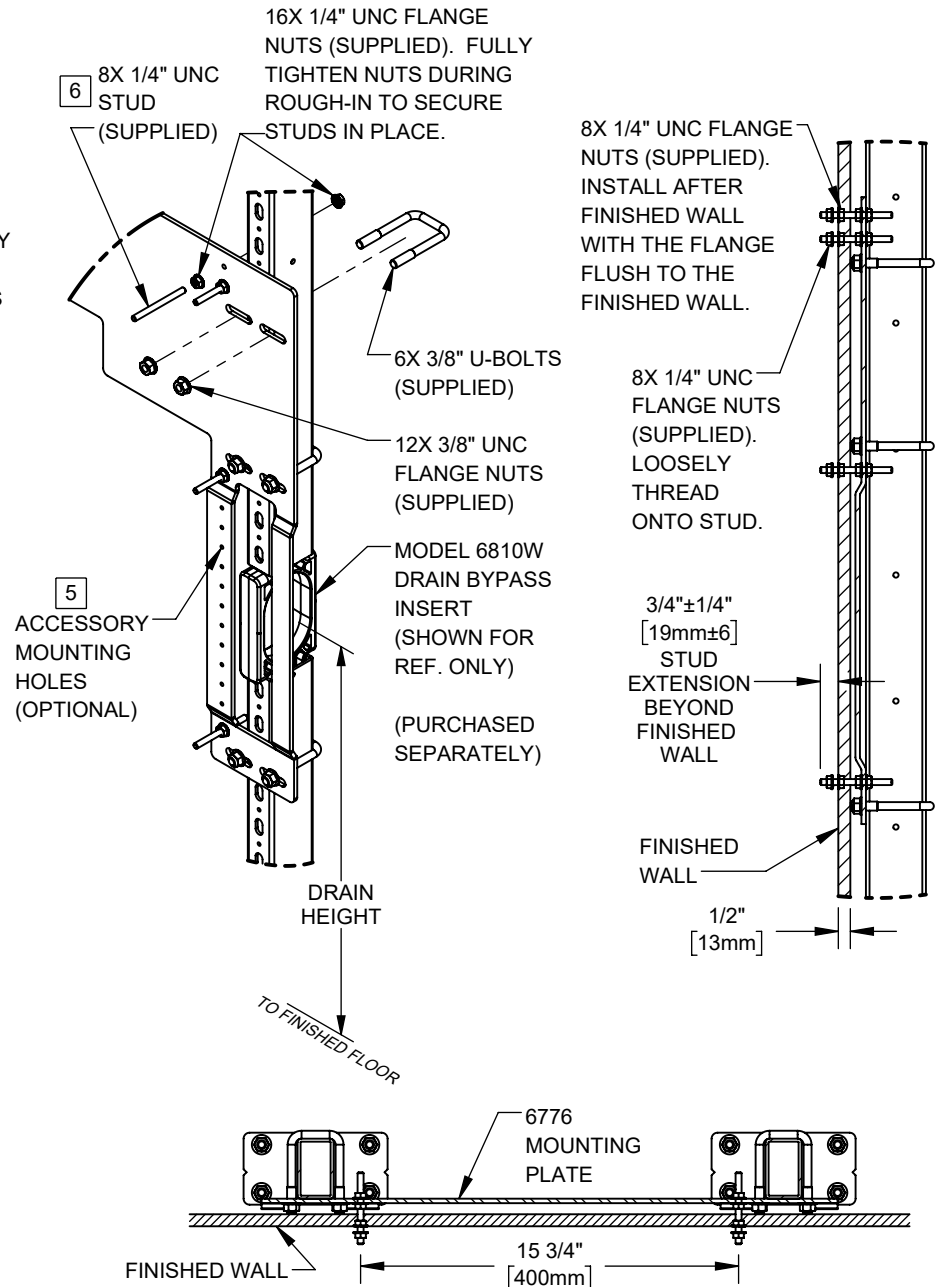
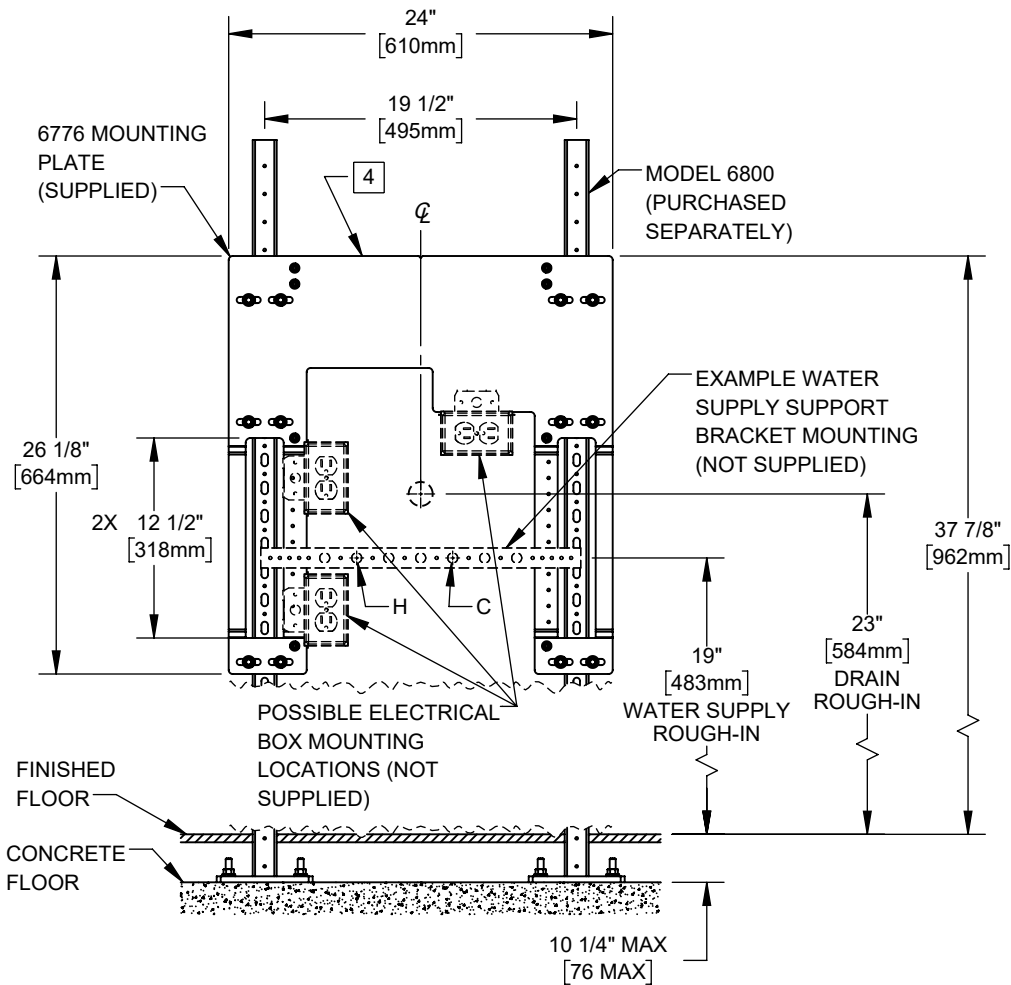


NOTES:

1. HOLD ROUGH-IN DIMENSIONS $\pm 1/4"$ (6.4mm).
2. WHEN INSTALLING THIS UNIT, LOCAL, STATE, OR FEDERAL CODES SHOULD BE ADHERED TO.
3. REFER TO 7660 AND 7661 INSTALLATION DRAWINGS FOR DETAILED DRAIN AND WATER SUPPLY ROUGH-IN LOCATIONS.
4. ENSURE TOP OF 6776 MOUNTING PLATE IS LEVEL $\pm 0.5"$.
5. SELF TAPPING/DRILLING MOUNTING SCREWS PROVIDED FOR MOUNTING ELECTRICAL BOX (BY OTHERS) AND WATER SUPPLY SUPPORT BRACKET (BY OTHERS).
6. AFTER SECURING THE STUDS, COVER THREADS WITH MASKING TAPE TO PROTECT THREADS DURING FINISHED WALL INSTALLATION.



1455 KLEPPE LANE
SPARKS, NEVADA 89431
(775) 359-4712 FAX (775) 359-7424
E-MAIL: HAWS@HAWSO.COM
WEBSITE: WWW.HAWSO.COM

ECN: 5877	REV. ECN: 5960	BY: JU	MODEL(S)	6776	PART NUMBER
DRAWN: JU	DATE: 01/09/23	CHKD: JL			0510002140
APPROVED: JU	DATE: 08/09/23				REVISION
					2
SCALE: 1:12			DRAWING TYPE: INSTALLATION		SIZE: A
					SHEET 1 OF 1