

FEATURES & BENEFITS

CONSTRUCTION

Fountain is made of 18 gauge Type 304 stainless steel, and bottle filler made of 14-gauge Type 304 stainless steel, both with a satin finish that resists stains and corrosion, and have soft, rounded corners. Unit features stainless steel satin finish back panels, vandal-resistant bottom plates, and 1-1/4" integral trap.

FREEZE-RESISTANT VALVES

Fully engineered system with the pneumatic-operated, freeze-resistant valves mounted in cabinets that are installed on the inside wall where room temperature does not drop below 50° F (10° C). When valves goes to off position, water left in supply line between valve and bubbler or bottle filler drains back into waste inside cabinet, protecting the unit from freezing, and allowing fountain to function year-round.

BUBBLER HEAD

Polished chrome-plated brass bubbler head with integral 11/16" dia. basin shank and stainless anti-rotation roll pin for vandal resistance strength. Shielded, angled stream opening provides a steady, sanitary source of drinking water at .45 gpm.

VANDAL RESISTANT

The bubbler head, push button, drain strainer and bottom plate are locked in place, discouraging unwanted vandal tampering.

OPTIONS

- Support Frame: Model 6800 universal in-wall mounting support for use with most fountains.
- Mounting Plate: Model 6700, in-wall mounting plate for model 1920FR and/or 1109FR.
- Mounting Plate: Model 6700R, on-wall mounting plate for model 1920.

For more information, visit www.hawsc.com or call (888) 640-4297.



SPECIFICATIONS

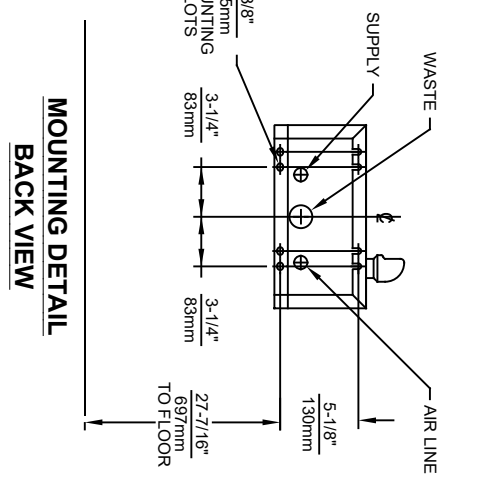
Model 1109FRP wall mounted vandal-resistant barrier-free drinking fountain and bottle filler shall include an 18 gauge Type 304 Stainless Steel satin finish basin, drip tray for bottle placement during filling, polished chrome-plated brass vandal-resistant bubbler head, polished chrome-plated brass vandal-resistant push-buttons, pneumatic valves installed on the inside wall where room temperatures do not drop below 50° F (10° C), self-draining water lines which protect the unit from freezing, stainless steel pack panels, polished chrome-plated brass vandal resistant waste strainer, vandal-resistant stainless bottom plates, and 1-1/4" O.D. (3.2 cm) waste pipe.

APPLICATIONS

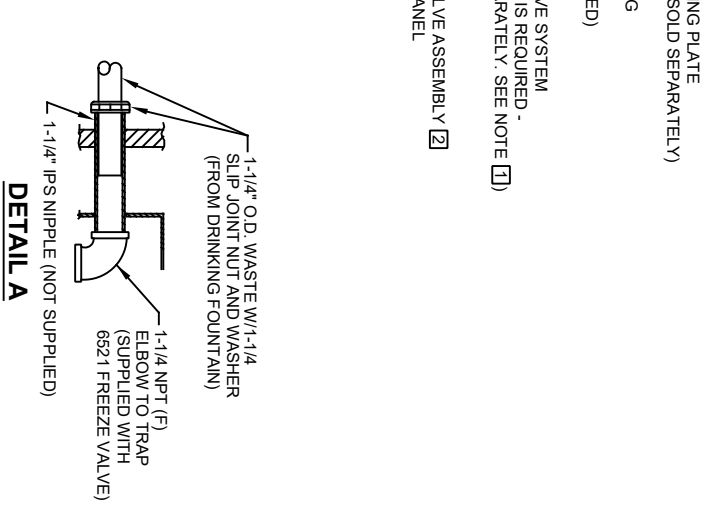
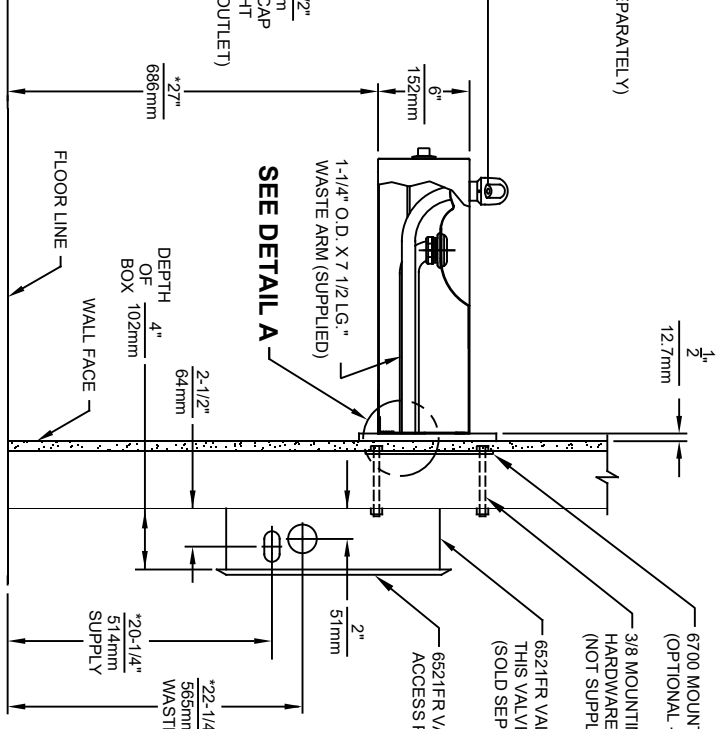
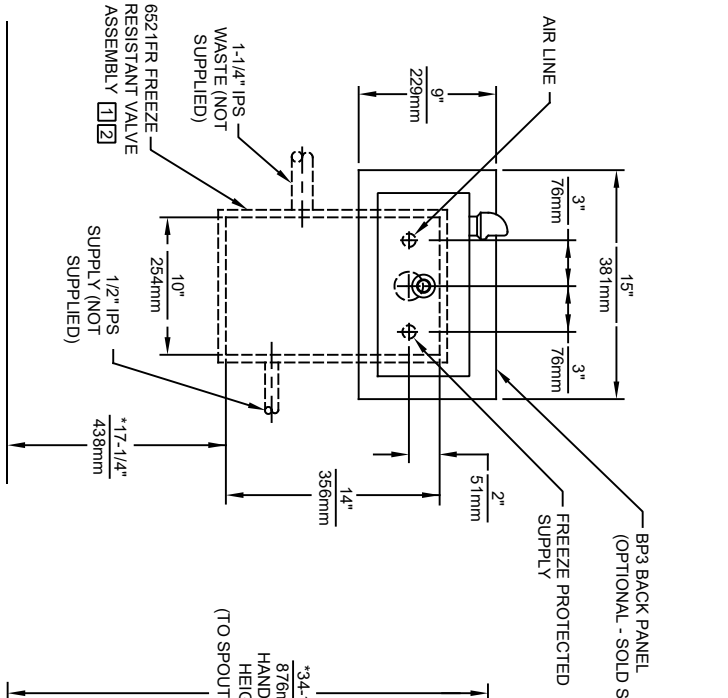
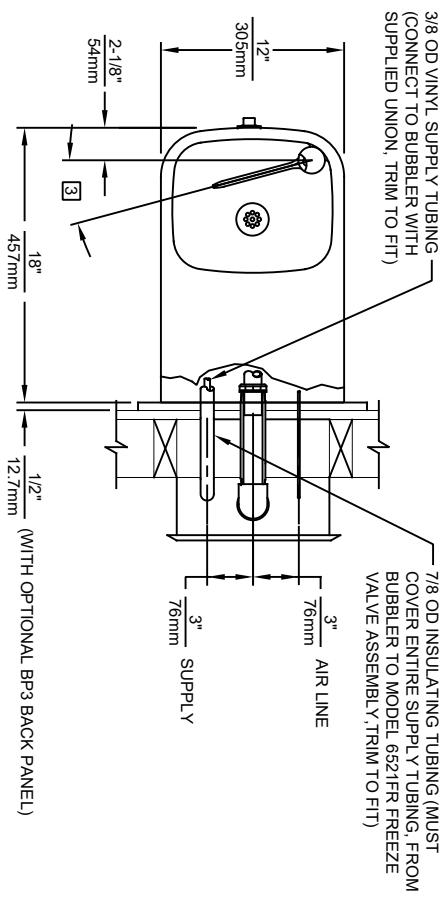
Perfect for either public or private outdoor settings, Model 1109FRP is a great fit in areas where aesthetics are important to the overall appeal of the architecture. Beautiful satin finish helps to maintain the fountains overall appeal. Specifically, this type of wall mounted drinking fountain may be placed in settings such as: parks, schools, and other facilities where the temperature may drop into freezing conditions. Model meets all current Federal Regulations for the disabled including those in the Americans with Disabilities Act. Haws manufactures drinking fountains, faucets and electric water coolers to be lead-free by all known definitions including NSF/ANSI/CAN 61-Section 9, NSF/ANSI/CAN 372, California Proposition 65, and the Federal Safe Drinking Water Act. Product is compliant to California Health and Safety Code 116875 (AB 1953-2006), and 116876 (AB 100) "NSF/ANSI/CAN 61: Q ≤ 1".

The bottle filler requires a mounting plate; either the Haws model 6700 in-wall or the 6700R on-wall support plate.





**MOUNTING DETAIL
BACK VIEW**



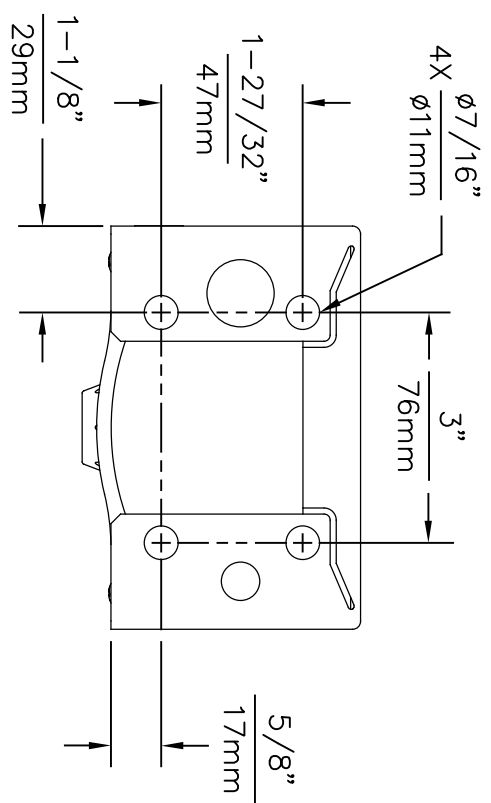
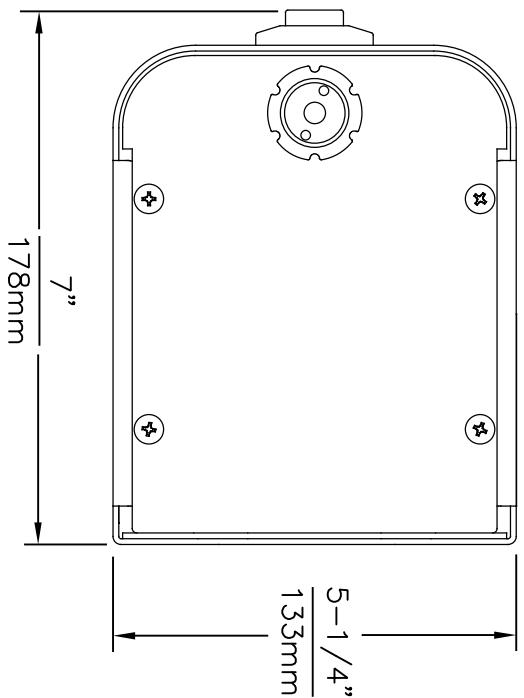
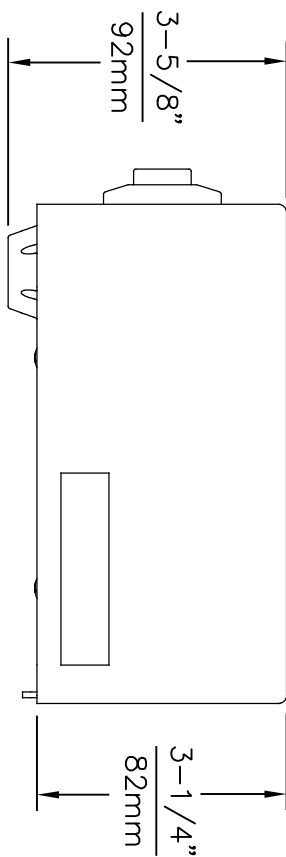
NOTES:

- 1 THIS FOUNTAIN REQUIRES THE USE OF MODEL 6521FR FREEZE RESISTANT VALVE ASSEMBLY (SOLD SEPARATELY OR AS PART OF PRODUCT BUNDLES (E.G., 1109FR WITH 6521FR OR 1109FR WITH 1920FR (NOT SHOWN) AND TWO 6521FR(S)). SEE 6521FR INSTALLATION INSTRUCTIONS FOR CONNECTION DETAILS.
- 2 VALVE ASSEMBLY MUST BE INSTALLED IN A WARM AREA. PROVISIONS SHOULD BE MADE TO ALLOW ACCESS TO ACCESS PANEL.

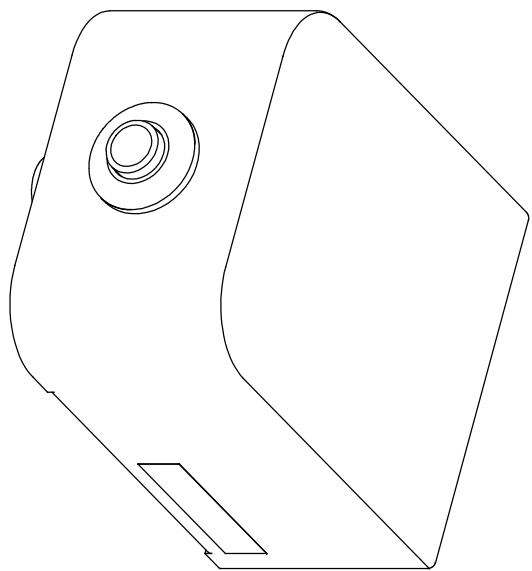
- 3 MAXIMUM ADJUSTABLE RANGE IS 15" FROM PARALLEL TO BACK OF WALL.
- 4. HOLD ROUGH-IN DIMENSIONS ± 1/4" (6.4mm).
- 5. * WHEN INSTALLING THIS UNIT LOCAL, STATE OR FEDERAL CODES SHOULD BE ADHERED TO. FOR INSTALLATION HEIGHTS OTHER THAN SHOWN, DIMENSIONS MARKED (*) MUST BE ADJUSTED ACCORDINGLY.

1455 KLEPPE LANE
SPARKS, NEVADA 89431
(775) 359-4712 FAX (775) 359-7424
E-MAIL: HAWS@HAWS.CO.COM
WEBSITE: WWW.HAWS.CO.COM

ECON NO. REVISED PER: BV	MODEL(S)	PART NUMBER	1109FR
DRAWN: ECON 5799	DATE: 06/01/88	CHKD: JS	REVISION: 16
APPROVED: FV	DATE: 07/08/22	SCALE: 1:16	DRAWING TYPE: INSTALLATION
SHEET 1 OF 1		SIZE: A	




1920FR MOUNTING HOLE LOCATIONS

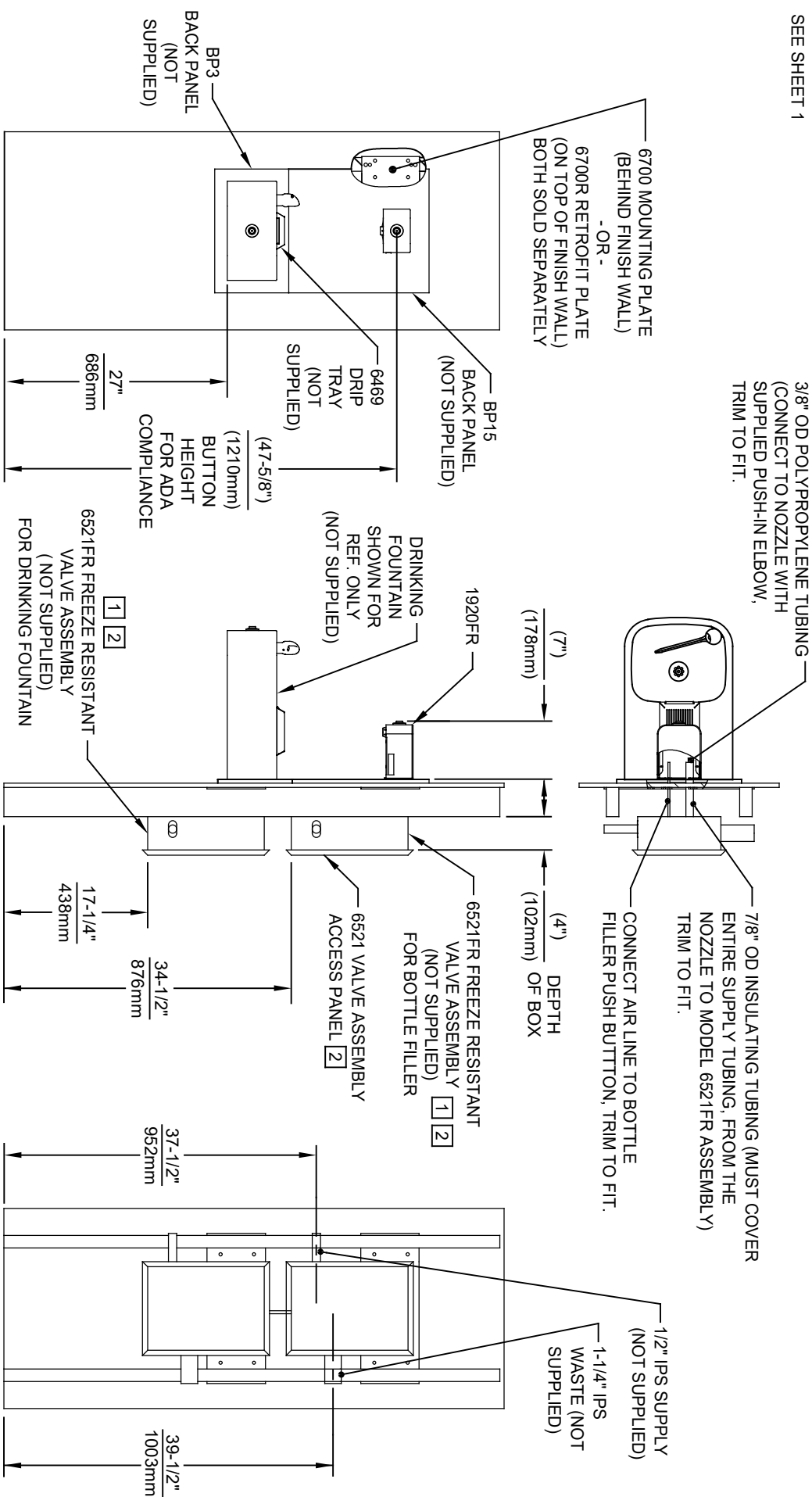


NOTES:

- 1 THIS BOTTLE FILLER REQUIRES THE USE OF MODEL 6521FR FREEZE RESISTANT VALVE ASSEMBLY (SOLD SEPERATELY OR AS PART OF PRODUCT BUNDLES).
- 2 VALVE ASSEMBLY MUST BE INSTALLED IN A WARM AREA. PROVISIONS SHOULD BE MADE TO ALLOW ACCESS TO THE ACCESS PANEL.
- 3 SEE SEPERATE INSTALLATION DRAWINGS FOR MOUNTING PLATES, AND BACK PANELS (SHOWN FOR REFERENCE ONLY - NOT SUPPLIED).
- 4 WHEN INSTALLING THIS UNIT, LOCAL, STATE OR FEDERAL CODES SHOULD BE ADHERED TO FOR INSTALLATION LOCATIONS, WASTE & SUPPLY REQUIREMENTS OTHER THAN SHOWN.

		MODEL(S)		1920FR	
		1455 KLEPPLE LANE SPARKS, NEVADA 89431 (775) 359-4712 FAX (775) 359-7424 E-MAIL: HAWS@HAWSCO.COM WEBSITE: WWW.HAWSCO.COM		PART NUMBER 0510000491.D REVISION 7	
ECN NO. 5081 DRAWN: DS DATE: 05/25/16	REVISION PERMITS BY: FV ECN: 5883 DATE: 05/25/16	CHECKED: KAM DATE: 09/06/23	SCALE: N/A	DRAWING TYPE:	INSTALLATION:
APPROVED: FV		SIZE: A1 SHEET: 1 OF 3			

NOTES:
SEE SHEET 1



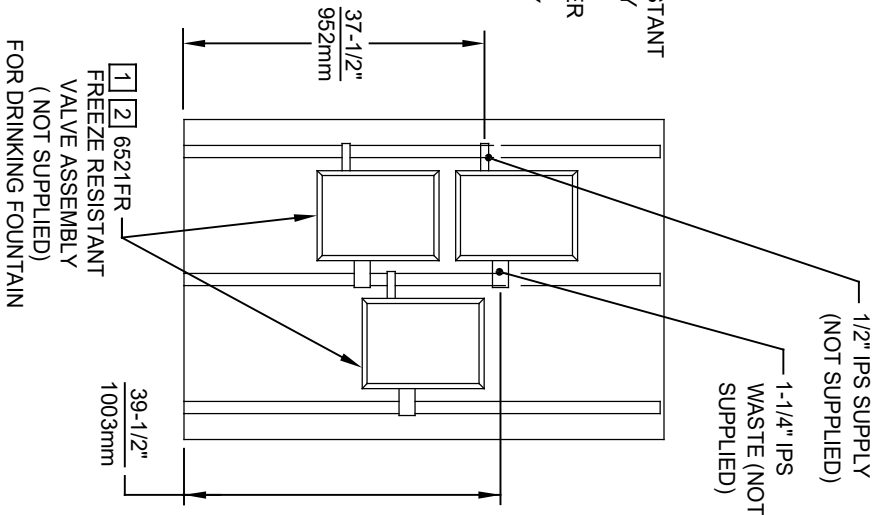
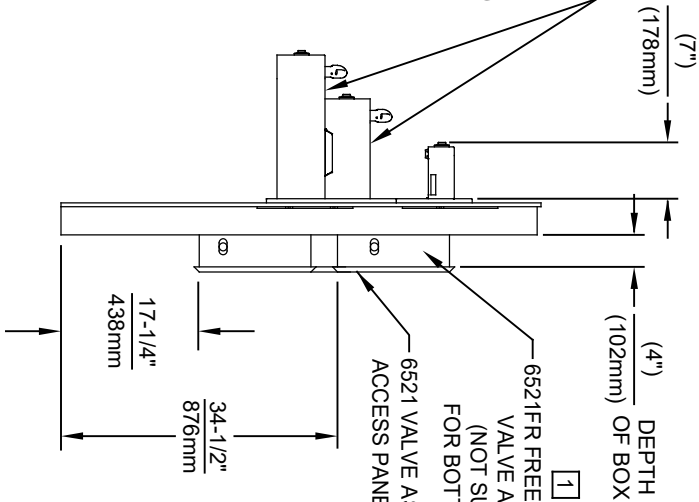
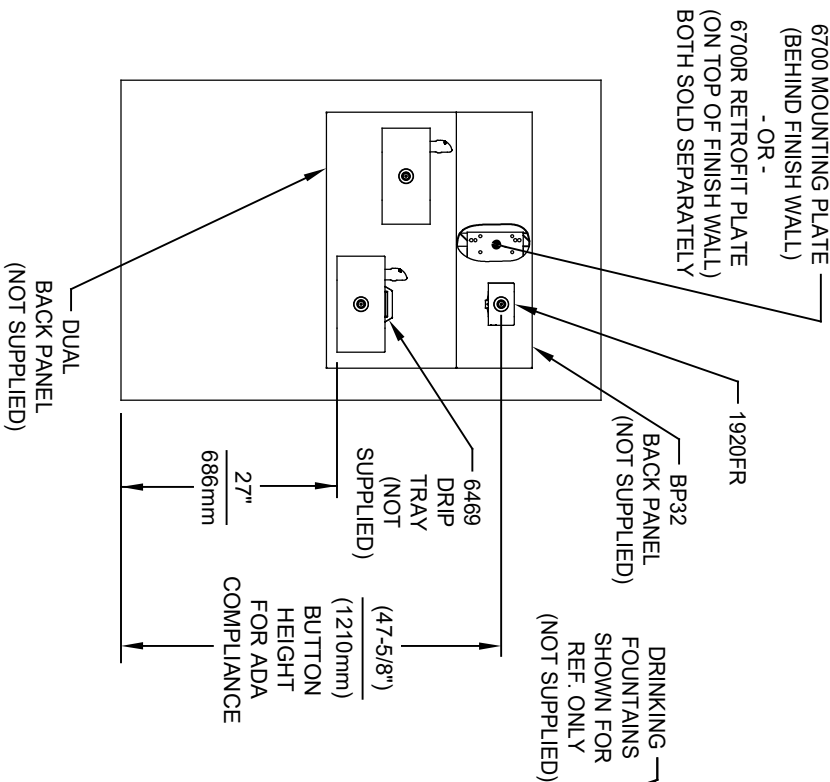
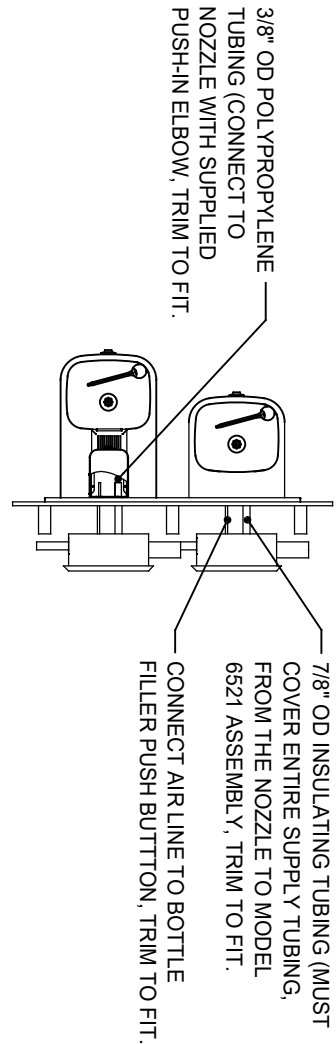
INSTALLATION SHOWN ABOVE HAWS MODEL 1109FR

1. SEE SEPARATE INSTALLATION DRAWINGS FOR MOUNTING PLATES AND BACK PANELS (SHOWN FOR REFERENCE - NOT SUPPLIED).
2. WHEN INSTALLING THIS UNIT, LOCAL, STATE OR FEDERAL CODES SHOULD BE ADHERED TO FOR INSTALLATION LOCATIONS, WASTE & SUPPLY REQUIREMENTS OTHER THAN SHOWN.

1455 KLEPPLE PLANE
SPARKS, NEVADA 89431
(775) 359-4712 FAX (775) 359-7424
E-MAIL: HAWS@HAWSCO.COM
WEBSITE: WWW.HAWSCO.COM

EQUIP. NO. REVISED PERMITS:		MODEL(S)	
8081	ECN: 5893	FV	1920FR
DATE:	CHKD:	DATE:	SCALE:
02/19/17	KM	09/06/23	N/A
APPROVED:	DATE:	SCALE:	DRAWING TYPE:
FV	09/06/23	N/A	INSTALLATION
PART NUMBER		SIZE:	SHEET:
0510000491.D		A1	2 OF 3
REVISION			
7			

NOTES:
SEE SHEET 1



INSTALLATION SHOWN ABOVE HAWS MODEL 1119FR

1. SEE SEPARATE INSTALLATION DRAWINGS FOR MOUNTING PLATES AND BACK PANELS (SHOWN FOR REFERENCE - NOT SUPPLIED).

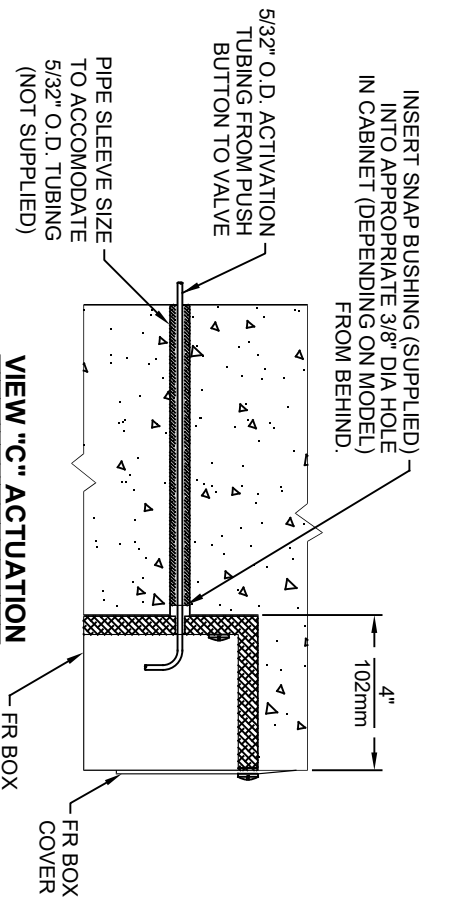
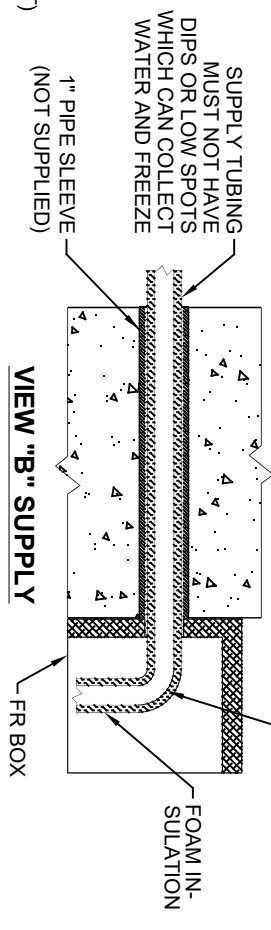
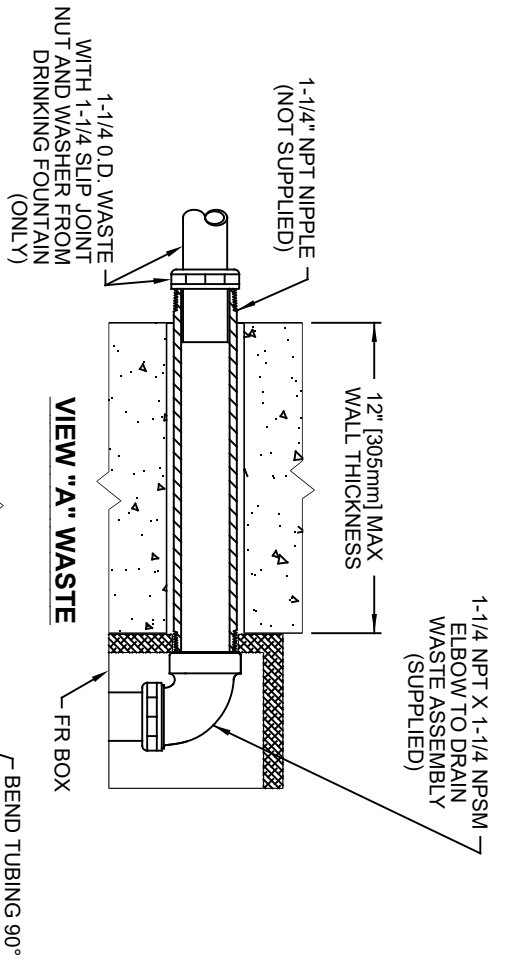
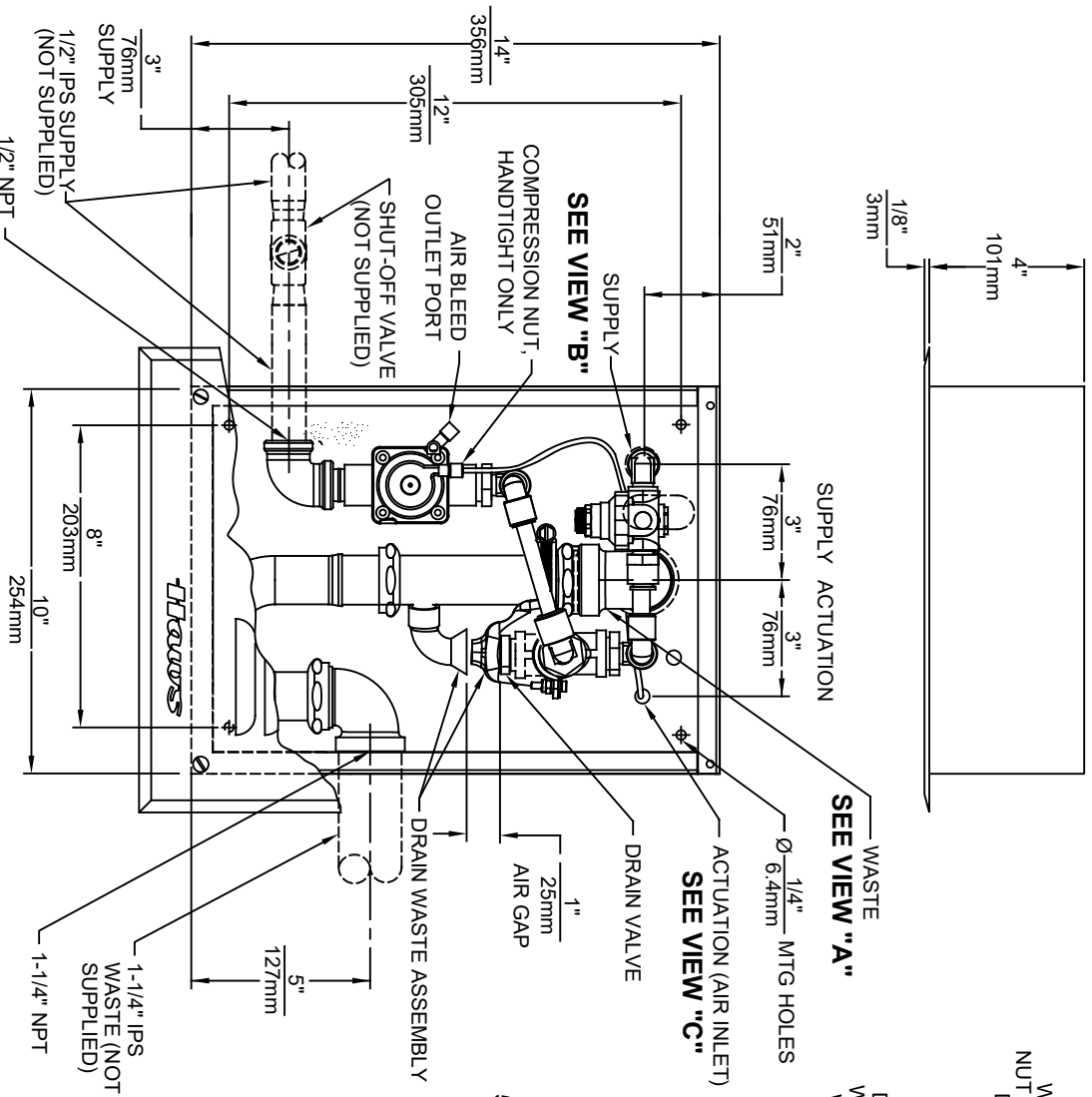
2. WHEN INSTALLING THIS UNIT, LOCAL, STATE OR FEDERAL CODES SHOULD BE ADHERED TO FOR INSTALLATION LOCATIONS, WASTE & SUPPLY REQUIREMENTS OTHER THAN SHOWN.

1455 KLEPPER LANE
SPARKS, NEVADA 89431
(775) 359-4712 FAX (775) 359-7424
E-MAIL: HAWS@HAWSCO.COM
WEBSITE: WWW.HAWSCO.COM

ECN NO.	REVISED PER BY:	MODEL(S)	SCALE:	DATE:	DRAWING TYPE:	INSTALLATION:	SIZE:	SHEET:	OF:
0181	EV	1920FR	N/A	02/19/12			A	3	3
DRAWN:	DATE:	CHKD:	DATE:	APPROVED:	SCALE:	DATE:	BY:	NO.	
JUL	02/19/12	KML		09/26/23					
PART NUMBER	0510000491.D	REVISION	7						

NOTES:

1. UNIT MAY BE RECESSED MOUNTED IN WALL AS SHOWN IN VIEW "C" OR SURFACE MOUNTED AS SHOWN IN VIEWS "A" AND "B".
2. VALVE MUST BE INSTALLED IN SPACE THAT MAINTAINS A MINIMUM OF 50°F (10°C).
3. DRINKING FOUNTAIN AND BOTTLE FILLER MODELS 1109FR & 1920FR EACH REQUIRE A SEPARATE 6521FR UNIT. DUAL DRINKING FOUNTAIN MODEL 1119FR REQUIRES TWO SEPARATE 6521FR UNITS. THE MODELS LISTED HERE ARE AVAILABLE SEPARATELY OR AS PART OF PRODUCT BUNDLES.

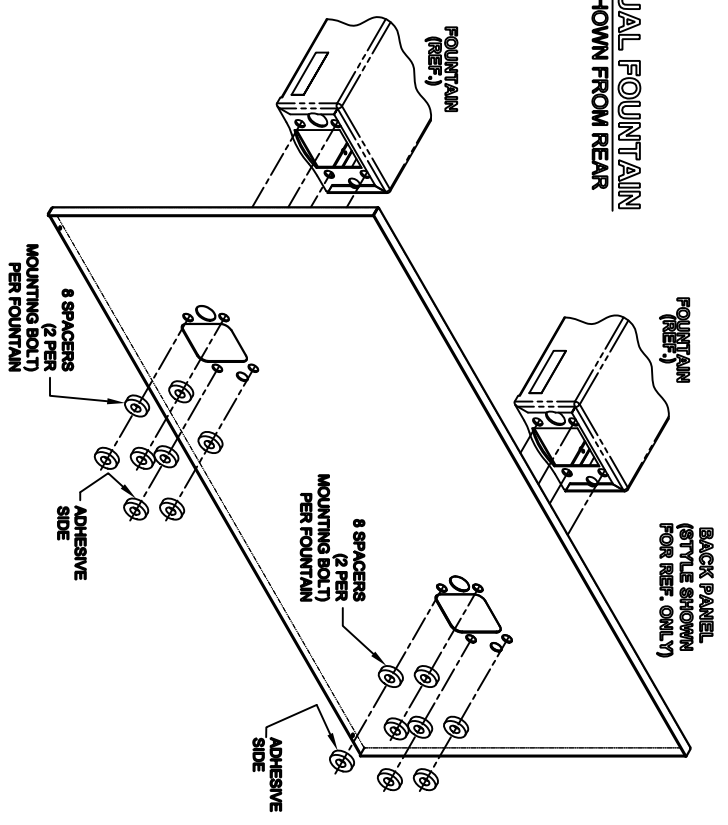


1435 KLEPPE LANE
SPARKS, NEVADA 89431
(775) 359-4712 FAX (755) 359-7424
E-MAIL: HAWS@HAWS.CO.COM
WEBSITE: WWW.HAWS.CO.COM

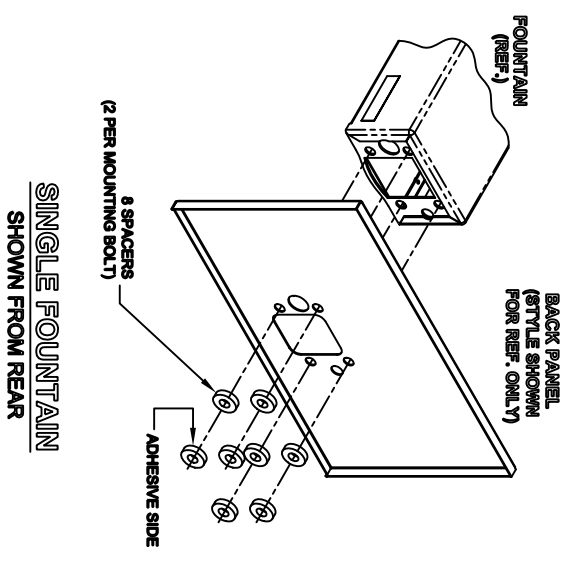
ECN NO	REVISED PER REV.	DATE	DATE	SCALE	1:5	DRAWING TYPE	INSTALLATION	SIZE	A	SHEET	1 OF 1
ECN-5799	J.S.	0992	0992								
DRAWN	DATE	CHK'D	DATE								
C.L.	0992										
APPROVED	DATE										
F.V.	07/09/22										
MODEL(S)	6521FR										
PART NUMBER	0002077820 D										
DRAWING NO.	09306A00 18										
REV											

THIS DOCUMENT IS TRUE AND CORRECT AT TIME OF PUBLICATION. CONTAINED PRODUCT IMPROVEMENTS HAVE SPECIFICATIONS AND MEASUREMENTS SUBJECT TO CHANGE WITHOUT NOTICE.

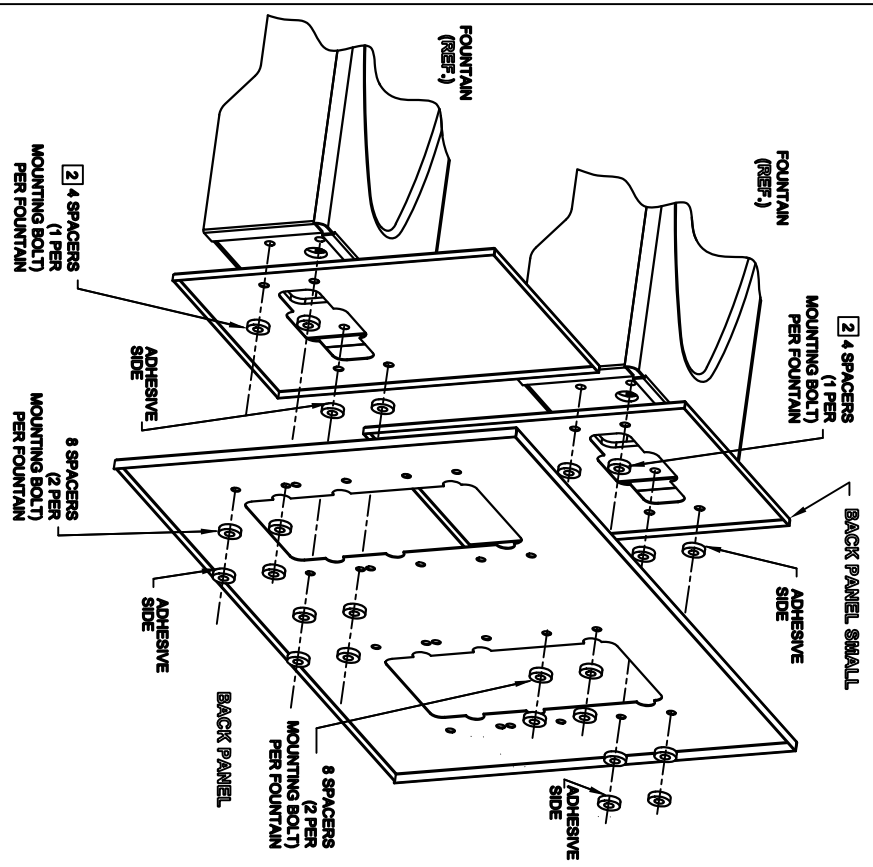
DUAL FOUNTAIN
SHOWN FROM REAR



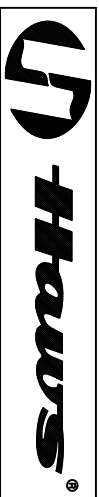
- NOTES:**
- 1 ON ALL BACK PANEL MODELS, SPACERS ARE NOT USED WHEN A MOUNTING FRAME IS USED EXCEPT AS SPECIFIED IN NOTE 2
 - 2 INDICATED SPACERS ARE USED WITH MOUNTING FRAME (DUAL ADJUSTABLE)



SINGLE FOUNTAIN
SHOWN FROM REAR



DUAL FOUNTAIN ADJUSTABLE
SHOWN FROM REAR



1465 KLEPPE LANE
SPARKS, NEVADA, 89431
(775) 399-4712 FAX (759) 399-7424
E-MAIL: HAWS@HAWS.CO.COM
WEBSITE: WWW.HAWS.CO.COM

ECN NO. REVISED PER BY:	MODEL(S)	BACK PANEL
DRAWN: []	DATE: []	SPACER INSTRUCTIONS
CHKD: []	DATE: []	INSTALLATION
APPROVED: []	DATE: []	SIZE: A
	SCALE: 1:10	DRAWING TYPE:
		SHEET: 1 OF 1
PART NUMBER:	0002082219	REV: 5