



# model BTL1311

Bottle Stand Retrofit Kit

## FEATURES & BENEFITS

---

## OPTIONS

---

For more information, visit [www.hawesco.com](http://www.hawesco.com) or call (888) 640-4297.



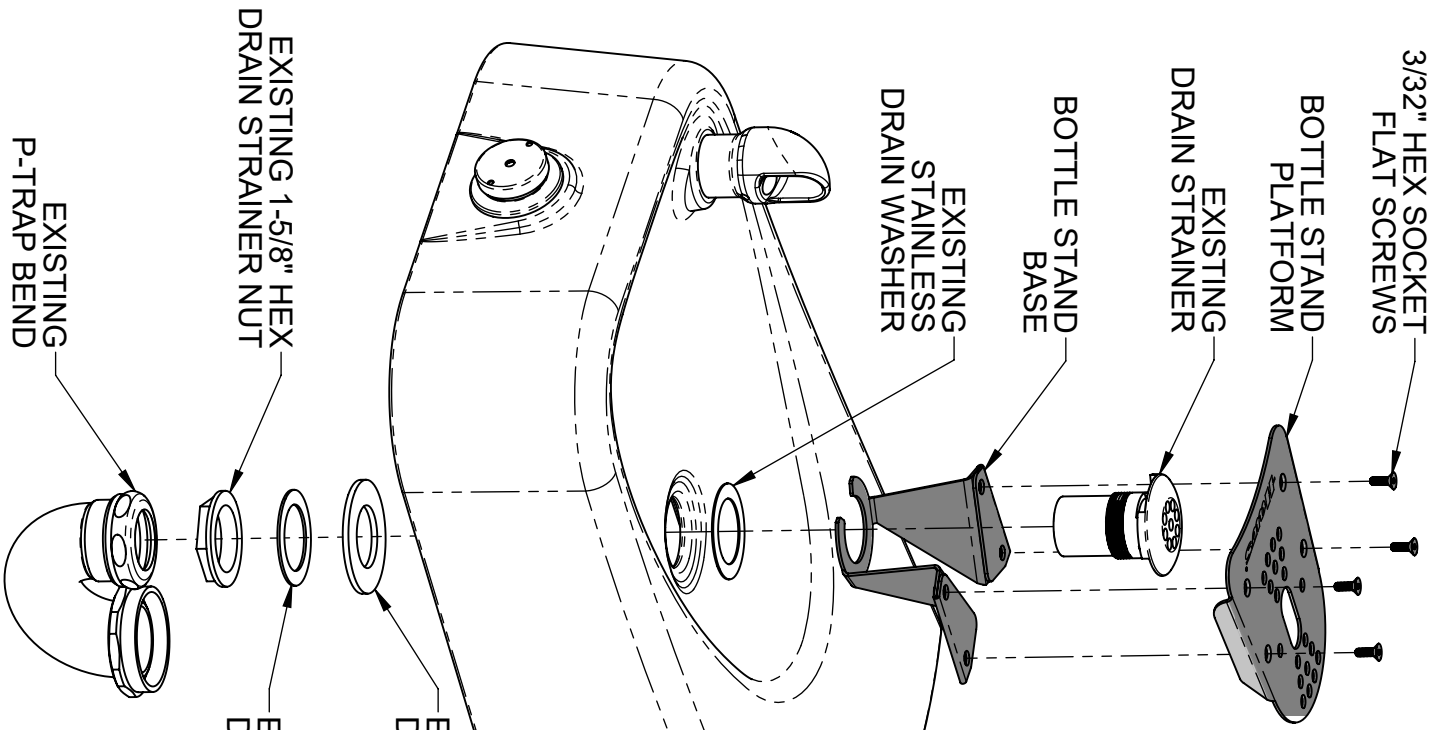
## SPECIFICATIONS

---

The Haws BTL1311 is an add-on bottle stand for the 1311/1501 series drinking fountains with the 1920 bottle filler installed. Once installed, the user can place their bottle on the stand allowing the bottle to be filled with one hand (either by using the push button, or the motion-activated operation). The stand is made of 304 stainless-steel and is easily installed.

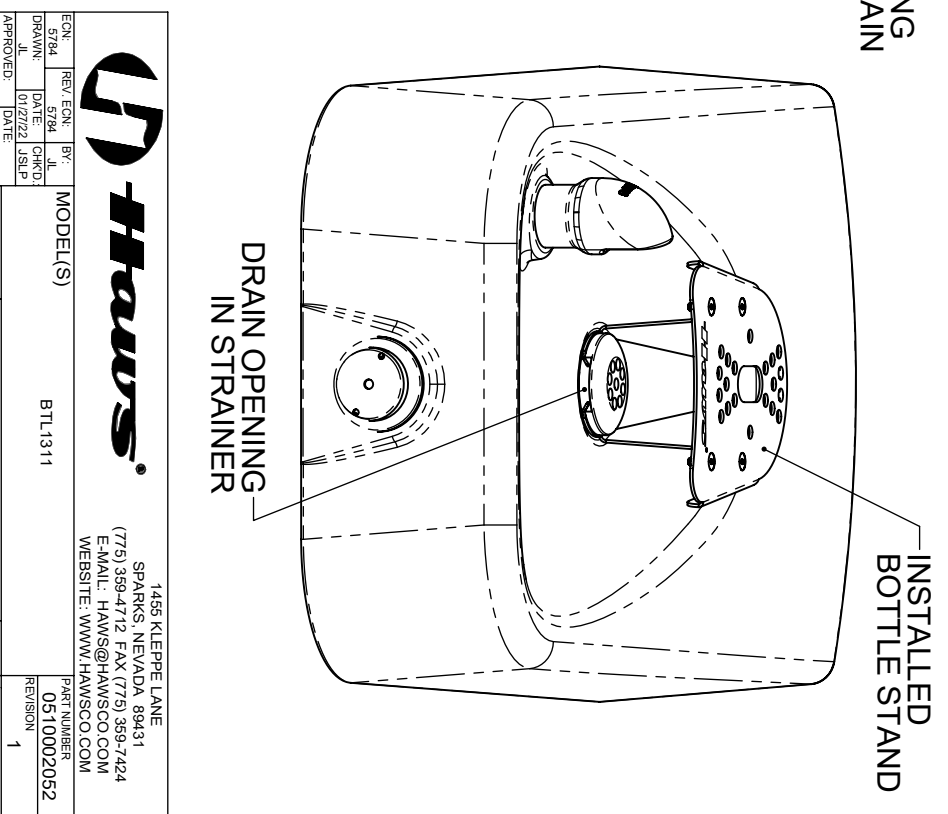
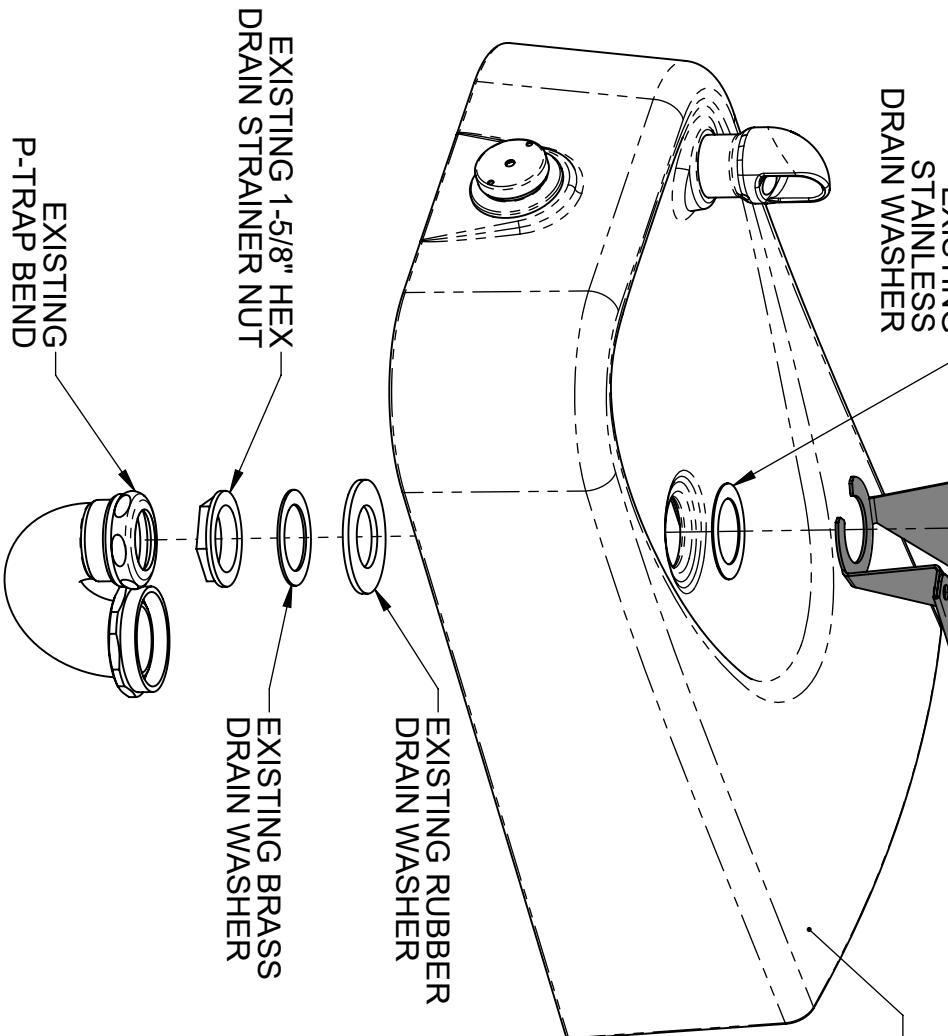
## APPLICATIONS

---



**INSTALLATION:**

1. ON AN 1311- OR 1501-SERIES FOUNTAIN, REMOVE THE FOLLOWING:
  - BOTTOM PLATE (NEEDS 1/8" HEX KEY)
  - P-TRAP BEND (NEEDS PIPE WRENCH)
  - 1-5/8" DRAIN STRAINER NUT (NEEDS PIPE WRENCH)
  - STAINLESS STEEL, BRASS, & RUBBER DRAIN WASHERS
  - DRAIN STRAINER
2. PLACE THE EXISTING STAINLESS DRAIN WASHER, THEN THE BOTTLE STAND BASE AS SHOWN, OVER THE STRAINER HOLE. RE-INSERT THE STRAINER, ROTATING IT SO A DRAIN OPENING FACES THE FRONT.
3. REINSTALL THE OTHER DRAIN WASHERS AND THE STRAINER NUT.
4. INSTALL THE BOTTLE STAND PLATFORM WITH THE 4 SUPPLIED FLAT SCREWS (NEEDS 3/32" HEX KEY).
5. REASSEMBLE THE REMAINDER AND CHECK FOR LEAKS.



**Haws®**

1455 KLEPPE LANE  
 SPARKS, NEVADA 89431  
 (775) 359-4712 FAX (775) 359-7424  
 E-MAIL: HAWS@HAWSCCO.COM  
 WEBSITE: WWW.HAWSCCO.COM

ENCL. 5734	REV. E/CN. BY: JLB	MODEL(S)	BTL1311
DRAWN: 01/22/22	DATE: 01/22/22	CHRD: JSLP	
APPROVED: 09/29/22	SCALE: 14	DRAWING TYPE: INSTALLATION	SIZE: A
			SHEET 1 OF 1

PART NUMBER: 0510002052  
 REVISION: 1