

FEATURES & BENEFITS

BOTTLE FILLER VALVE

With its patented stainless steel, push-button activated valve assembly which allows for front access stream adjustment as well as cartridge and strainer access, this bottle filler offers 100% lead free waterways. The valve works at an operating pressure range of 30 to 90 psi (2.1 to 6.2 bar).

CONSTRUCTION

Unit is made of 14 gauge Type 304 stainless steel with a satin finish that resists stains and corrosion, and has soft rounded corners. Unit features vandal-resistant bottom plate and dispensing nozzle.

VANDAL-RESISTANT

The push button and bottom plate are locked in place, discouraging unwanted vandal tampering.

LAMINAR FLOW

Adjustable, splash-free, 1 gpm (3.78 L) laminar water flow.

EFFICIENT AND FLEXIBLE INSTALLATION

Unit is designed for retrofit or new construction applications. No drain required for mounting over existing drinking fountain.

MOUNTING OPTIONS

Select from mounting plate and back panel models to complete installation. Unit can mount on various wall types.



SPECIFICATIONS

Model 1920 wall mounted vandal-resistant bottle filler shall include 100% lead-free waterways, satin stainless steel construction, 1 gpm (3.78 L) laminar flow, push-button operated stainless steel valve with front-accessible cartridge and flow adjustment. It can be used as a stand-alone station or mounted above the Haws® 1001, 1011, 1107L, 1109, 1117L, and 1119 series drinking fountains.

This product requires a mounting plate; either the Haws model 6700 in-wall or the 6700R on-wall support plate.

OPTIONS

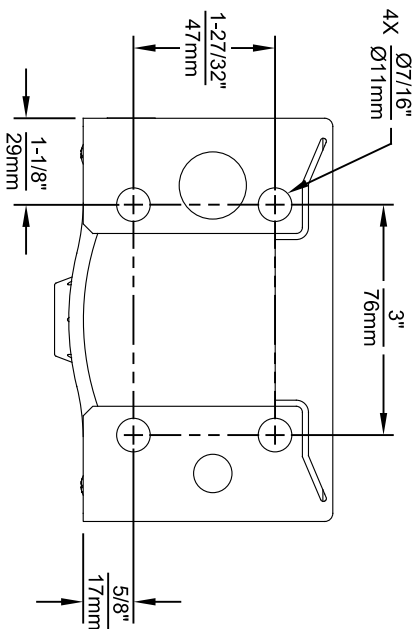
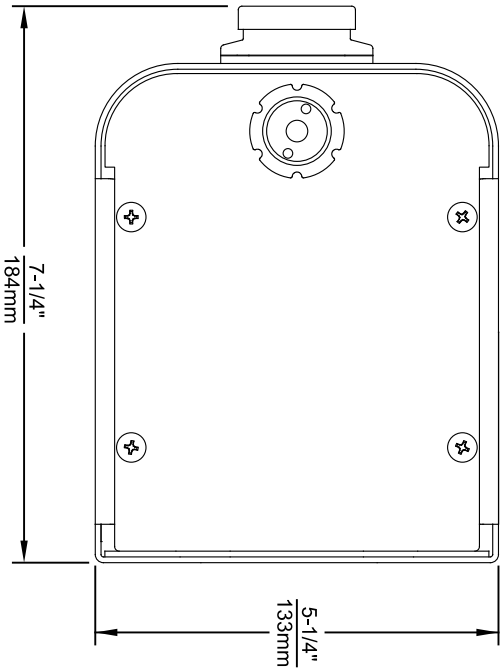
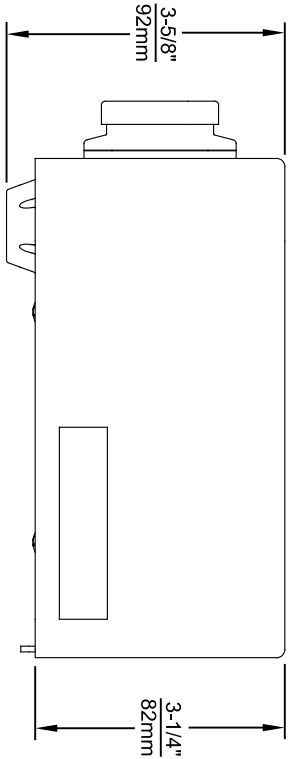
- Water Filter: Model 6480 filter kit with 3000 gallon carbon block filter, filter head, and mounting bracket.
- Mounting Plate: Model 6700 in-wall mounting plate is used with the 1920 series bottle fillers for single or dual fountain retrofit installations.
- Mounting Plate: Model 6700R on-wall mounting plate is used with the 1920 series bottle fillers for single or dual fountain retrofit installations.
- Back Panel: Model BP15, satin finish stainless steel 15 inch back panel for Model 1920 over a single fountain.
- Back Panel: Model BP32, satin finish stainless steel 32" back panel for model 1920 bottle filler over a dual fountain.
- Drain Basin: Model 6468 drip tray accessory catches unused bottle filler water.

APPLICATIONS

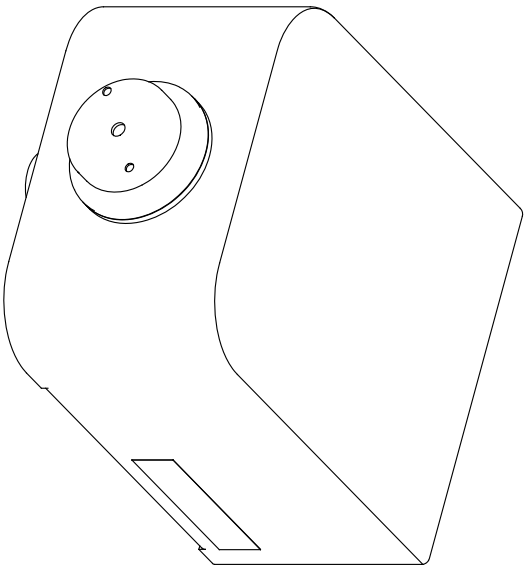
This type of wall mounted bottle filler may be placed in settings such as schools and other locations in and around office buildings with existing fountain installations where the temperature remains above freezing. Haws manufactures drinking fountains, faucets and electric water coolers to be lead-free by all known definitions including NSF/ANSI/CAN 61-Section 9, NSF/ANSI/CAN 372, California Proposition 65, and the Federal Safe Drinking Water Act. Product is compliant to California Health and Safety Code 116875 (AB 1953-2006), and 116876 (AB 100) "NSF/ANSI/CAN 61: Q ≤ 1" Convert Water Fountain to Bottle Filler with this vandal resistant bottle filling station.



For more information, visit www.hawscos.com or call (888) 640-4297.



1920 SERIES MOUNTING HOLE LOCATIONS
(3/8"-16 UNC MOUNTING HARDWARE NOT SUPPLIED)



NOTES:

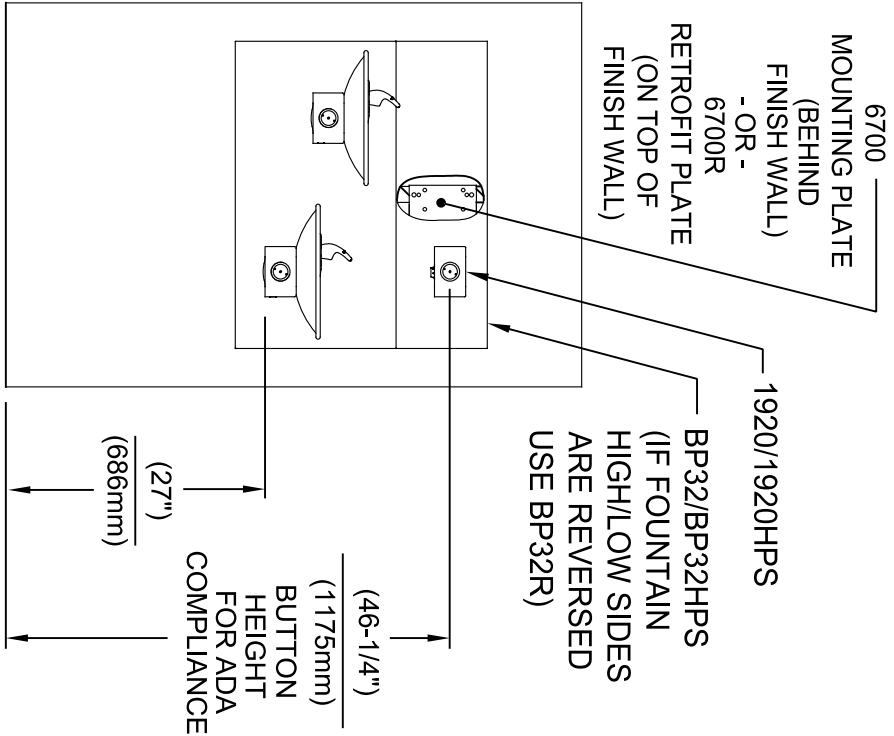
1. SEE SHEETS 2 THRU 7 FOR BOTTLE FILLER ADULT ADA HEIGHT APPLICATIONS AND SHEET 8 FOR CHILD ADA HEIGHT APPLICATIONS.
2. WHEN INSTALLING THIS UNIT, LOCAL, STATE OR FEDERAL CODES SHOULD BE ADHERED TO FOR INSTALLATION LOCATIONS, WASTE & SUPPLY REQUIREMENTS OTHER THAN SHOWN.



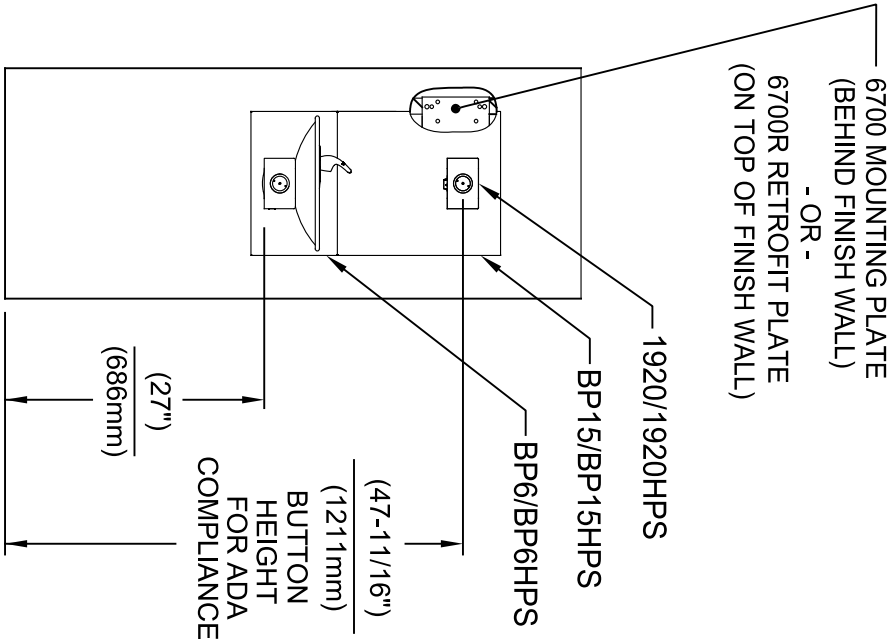
Haws
Since 1906

1455 KLEPPLE LANE
SPARKS, NE/VADA 89431
(775) 359-4712 FAX (775) 359-424
E-MAIL: HAWS@HAWS.CO.COM
WEBSITE: WWW.HAWS.CO.COM

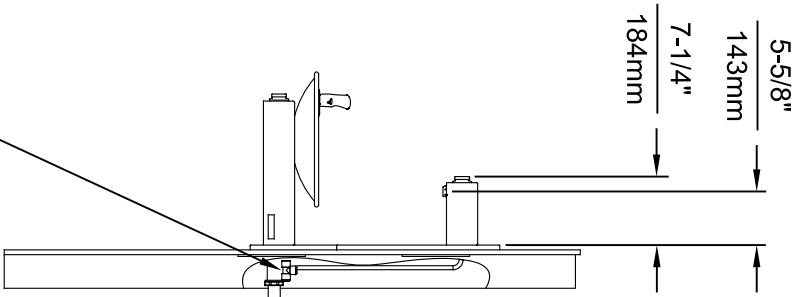
ECON NO. REVISED PERBY:		MODEL(S)	
5081	ECON. 5972	FV	
DRAWN:	DATE:	CHKD:	
DS	05/25/16	JC	
APPROVED:		DATE:	
FV		04/19/24	
SCALE:	N/A	DRAWING TYPE:	
SIZE:	A1	SHEET:	1 OF 8
PART NUMBER		REVISION	
0510000490.D		12	
INSTALLATION			
1920/1920HPS/1920W			



INSTALLATION ABOVE HAWS 1011 & H1011.8 SERIES



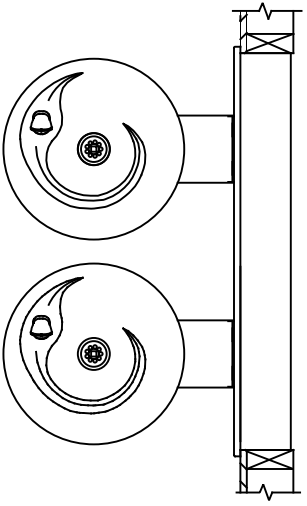
INSTALLATION ABOVE HAWS 1001 & H1001.8 SERIES



* IF YOUR FOUNTAIN IS THIS STYLE USE THESE DIMENSIONS

1. SEE SEPARATE INSTALLATION DRAWINGS FOR MOUNTING PLATES AND BACK PANELS (SHOWN FOR REFERENCE - NOT SUPPLIED).

2. WHEN INSTALLING THIS UNIT, LOCAL, STATE OR FEDERAL CODES SHOULD BE ADHERED TO FOR INSTALLATION LOCATIONS, WASTE & SUPPLY REQUIREMENTS OTHER THAN SHOWN.



3/8" O.D. SUPPLY TUBING AND 3/8" O.D. PUSH-IN TEE SUPPLIED. (CONNECT TO FOUNTAIN SUPPLY LINE)



Haws
Since 1906

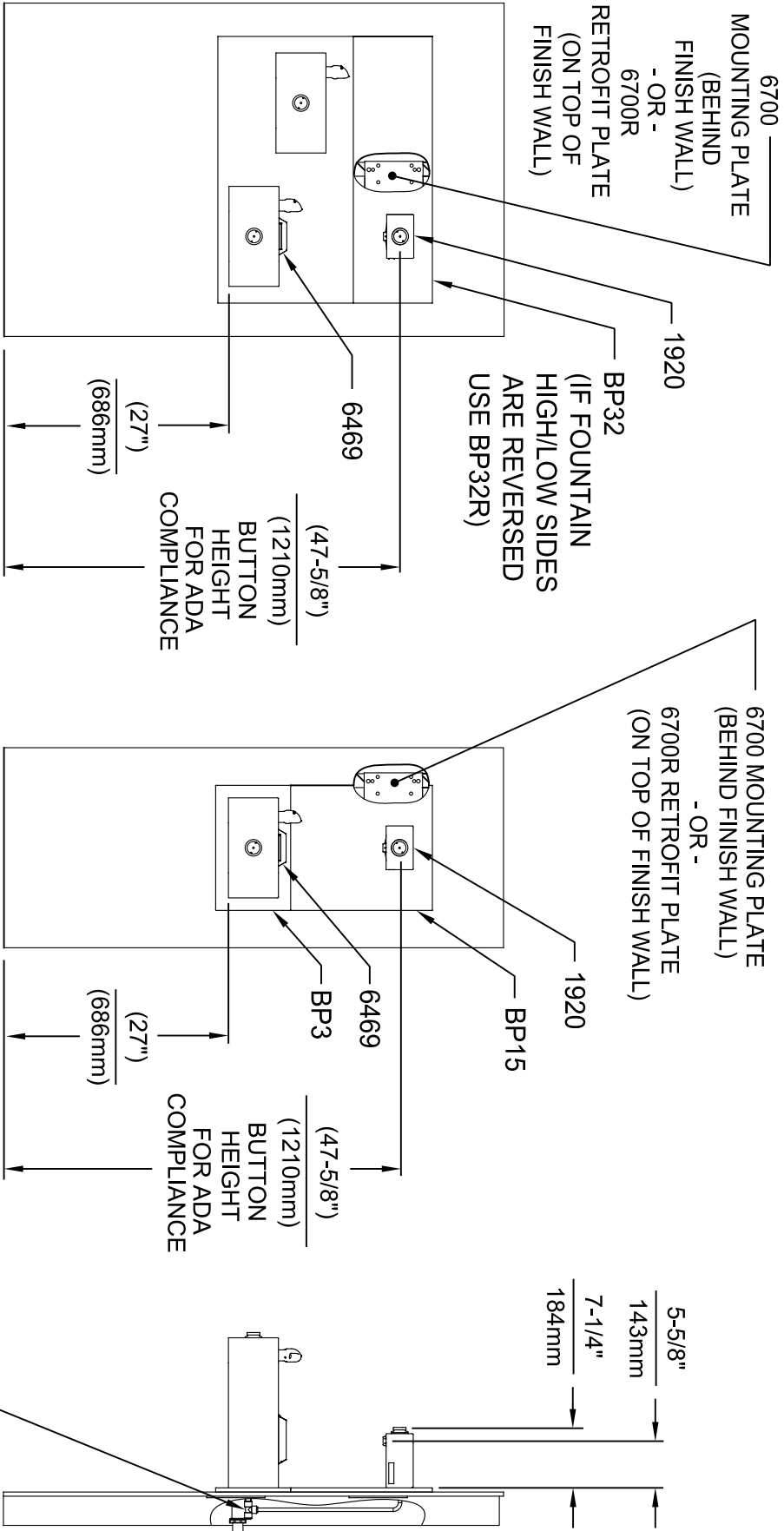
1455 KLEPPLE LANE
SPARKS, NE/VADA 89431
(775) 359-4712 FAX (775) 359-1424
E-MAIL: HAWS@HAWS.CO.COM
WEBSITE: WWW.HAWS.CO.COM

EGN NO. REVISED PERBY: FV
5081 EGN: 5972
DATE: 01/30/17
CHKD: JC
APPROVED: FV

MODEL(S)
1920/1920HPS/1920W

PART NUMBER
0510000490.D
REVISION
12

SCALE: N/A
DRAWING TYPE: INSTALLATION
SIZE: A1
SHEET: 2 OF 8



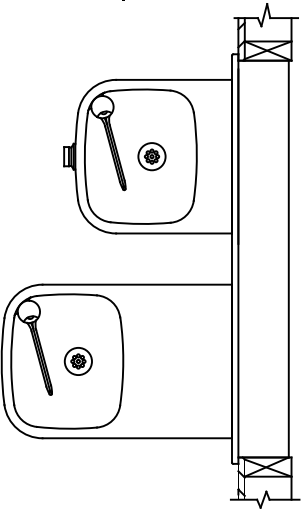
INSTALLATION ABOVE HAWS 1119 & H1119.8 SERIES

**INSTALLATION ABOVE HAWS 1109 & H1109.8 SERIES
SEE SHEET 8 FOR INSTALLATION AT CHILD HEIGHT**

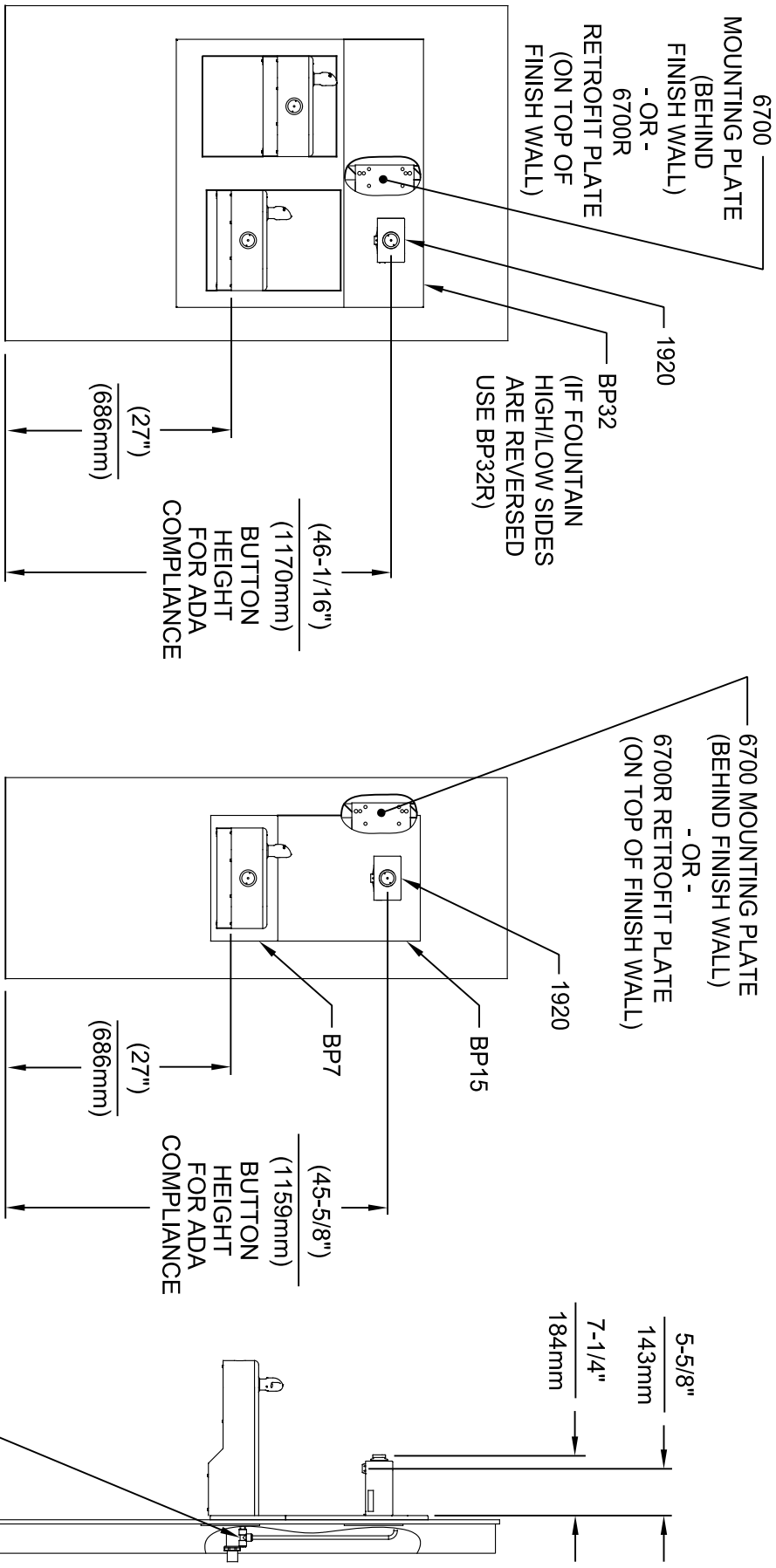
* IF YOUR FOUNTAIN IS THIS STYLE USE THESE DIMENSIONS

1. SEE SEPARATE INSTALLATION DRAWINGS FOR MOUNTING PLATES AND BACK PANELS (SHOWN FOR REFERENCE - NOT SUPPLIED).

2. WHEN INSTALLING THIS UNIT, LOCAL, STATE OR FEDERAL CODES SHOULD BE ADHERED TO FOR INSTALLATION LOCATIONS, WASTE & SUPPLY REQUIREMENTS OTHER THAN SHOWN.



ECON. NO. REVISED PERBY:		MODEL(S)		1455 KLEPPER LANE	
5081	ECON. 5972	FV		(773) 359-4712	FAX (773) 359-4724
DRAWN:	DATE:	CHKD:		E-MAIL: HAWS@HAWS.CO.COM	
ML	01/30/17	JC		WEBSITE: WWW.HAWS.CO.COM	
APPROVED:	DATE:	SCALE:	N/A	DRAWING TYPE:	INSTALLATION
FV	04/19/24			SIZE: A1	SHEET 3 OF 8
		1920/1920HPS/1920W		PART NUMBER 0510000490.D	
				REVISION 12	

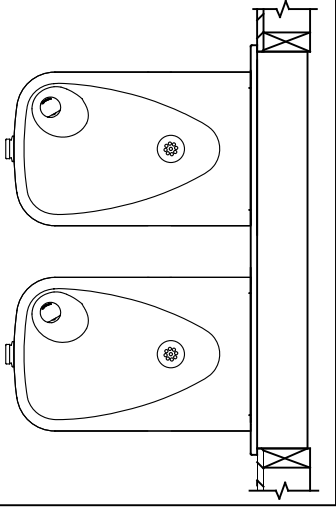


INSTALLATION ABOVE HAWS 1117L & H1117.8 SERIES


**INSTALLATION ABOVE HAWS 1107L & H1107.8 SERIES
SEE SHEET 8 FOR INSTALLATION AT CHILD HEIGHT**

* IF YOUR FOUNTAIN IS THIS STYLE USE THESE DIMENSIONS

1. SEE SEPARATE INSTALLATION DRAWINGS FOR MOUNTING PLATES AND BACK PANELS (SHOWN FOR REFERENCE - NOT SUPPLIED).
2. WHEN INSTALLING THIS UNIT, LOCAL, STATE OR FEDERAL CODES SHOULD BE ADHERED TO FOR INSTALLATION LOCATIONS, WASTE & SUPPLY REQUIREMENTS OTHER THAN SHOWN.



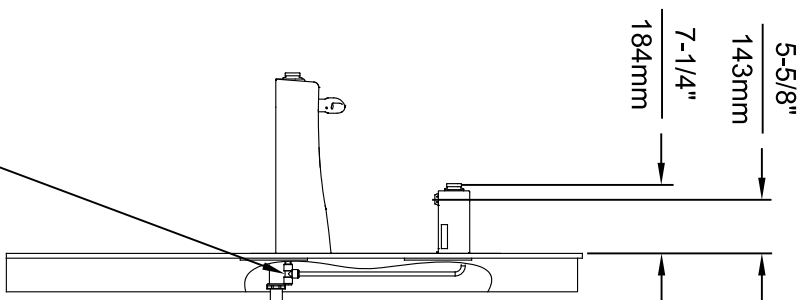
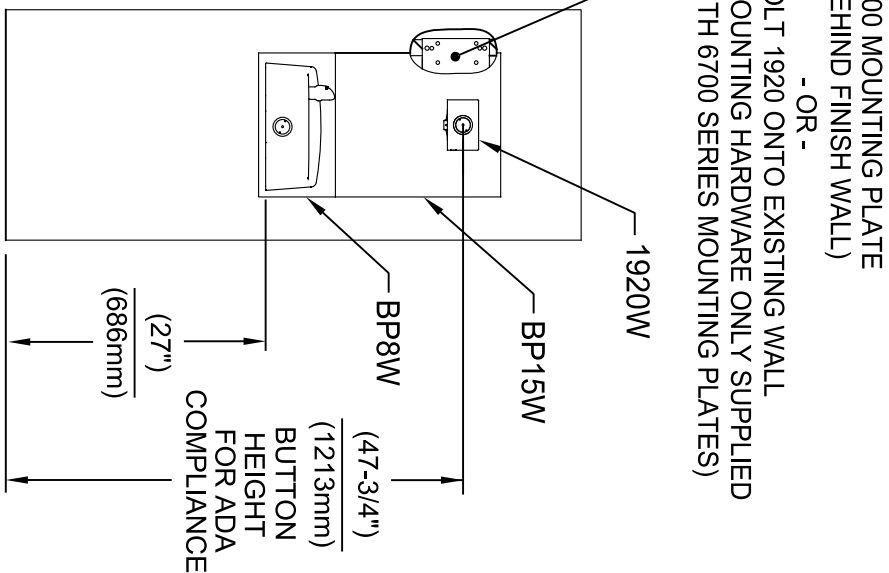
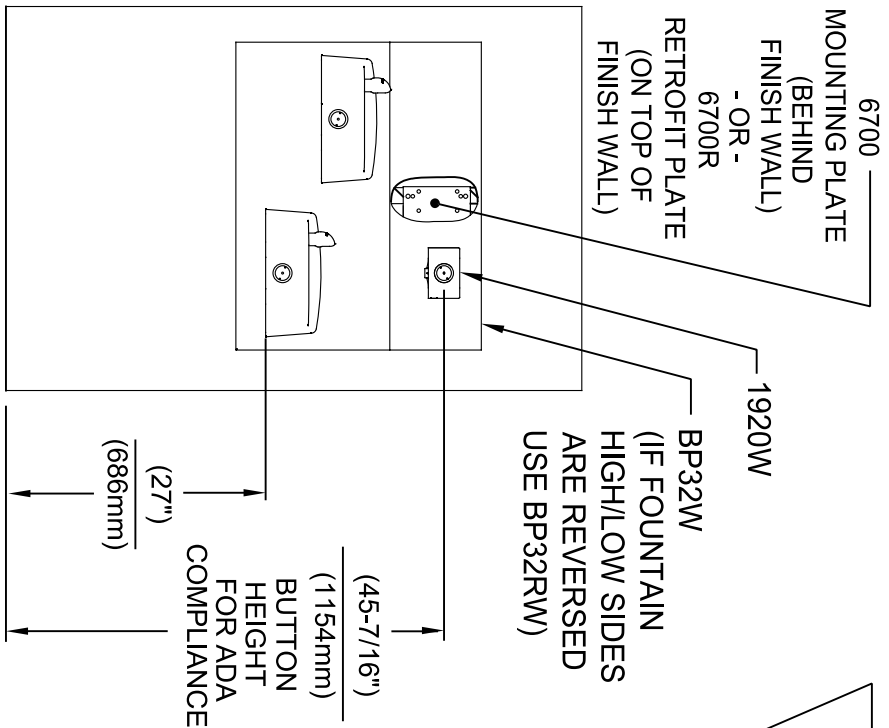
3/8" O.D. SUPPLY TUBING AND 3/8" O.D. PUSH-IN TEE SUPPLIED. (CONNECT TO FOUNTAIN SUPPLY LINE)



Haws®
Since 1906

1455 KLEPPLE LANE
SPARKS, NE/VADA 89431
(775) 359-4712 FAX (775) 359-1424
E-MAIL: HAWS@HAWS.CO.COM
WEBSITE: WWW.HAWS.CO.COM

EGN NO. REVISED PERBY:	MODEL(S)	PART NUMBER
5081 EGN: 5972	1920/1920HPS/1920W	0510000490.D
DRAWN: FV	SCALE: N/A	REVISION
ML	DATE: 01/30/17	12
APPROVED: FV	DATE: 04/19/24	SIZE: A1 SHEET: 4 OF 8



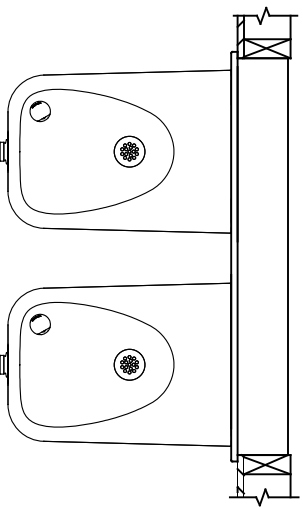
INSTALLATION ABOVE HAWS 1501

**INSTALLATION ABOVE HAWS 1311
SEE SHEET 8 FOR INSTALLATION AT CHILD HEIGHT**

* IF YOUR FOUNTAIN IS THIS STYLE USE
THESE DIMENSIONS

1. SEE SEPARATE INSTALLATION DRAWINGS
FOR MOUNTING PLATES AND BACK PANELS
(SHOWN FOR REFERENCE - NOT SUPPLIED).

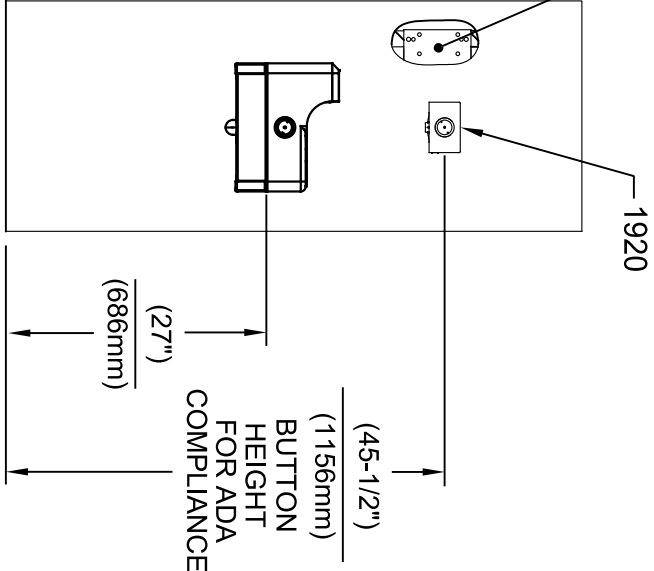
2. WHEN INSTALLING THIS UNIT, LOCAL,
STATE OR FEDERAL CODES SHOULD
BE ADHERED TO FOR INSTALLATION
LOCATIONS, WASTE & SUPPLY
REQUIREMENTS OTHER THAN SHOWN.



3/8" O.D. SUPPLY
TUBING AND 3/8" O.D.
PUSH-IN TEE SUPPLIED.
(CONNECT TO FOUNTAIN
SUPPLY LINE)

ECON. NO. REVISED PERBY: FV		MODEL(S)		1455 KLEPPLE LANE	
5081	ECON. 5972	FV		(775) 359-4712 FAX (775) 359-1424	
DATE: 02/13/17	CHKD: JC			E-MAIL: HAWS@HAWS.CO.COM	
APPROVED: FV	DATE: 04/15/24	SCALE: N/A	DRAWING TYPE:	WEBSITE: WWW.HAWS.CO.COM	
				INSTALLATION	SIZE: A1
				1920/1920HPS/1920W	SHEET 5 OF 8
				PART NUMBER	REVISION
				0510000490.D	12

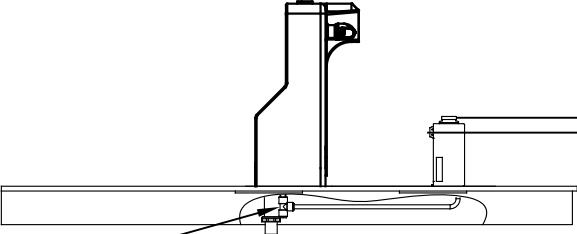
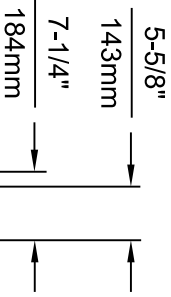
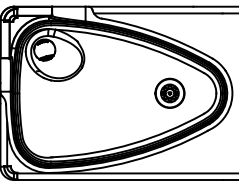
6700 MOUNTING PLATE
(BEHIND FINISH WALL)
- OR -
BOLT 1920 ONTO EXISTING WALL
(MOUNTING HARDWARE ONLY SUPPLIED
WITH 6700 SERIES MOUNTING PLATES)



INSTALLATION ABOVE HAWS 1047

* IF YOUR FOUNTAIN IS THIS STYLE USE
THESE DIMENSIONS

1. SEE SEPARATE INSTALLATION DRAWINGS
FOR MOUNTING PLATES AND BACK PANELS
(SHOWN FOR REFERENCE - NOT SUPPLIED).
2. WHEN INSTALLING THIS UNIT, LOCAL,
STATE OR FEDERAL CODES SHOULD
BE ADHERED TO FOR INSTALLATION
LOCATIONS, WASTE & SUPPLY
REQUIREMENTS OTHER THAN SHOWN.



3/8" O.D. SUPPLY
TUBING AND 3/8" O.D.
PUSH-IN TEE SUPPLIED.
(CONNECT TO FOUNTAIN
SUPPLY LINE)



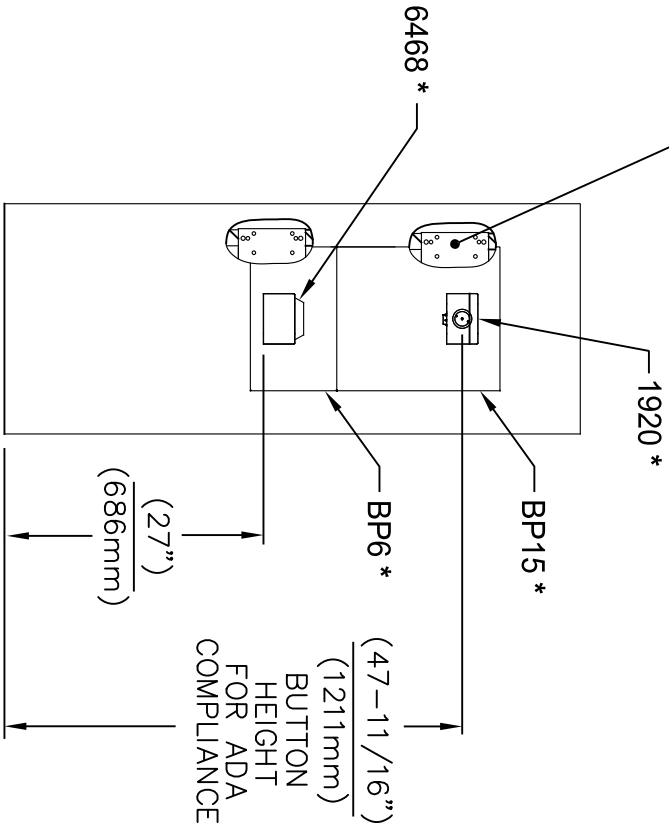
Haws
Since 1906

1455 KLEPPLE LANE
SPARKS, NEVADA 89431
(775) 359-4712 FAX (775) 359-7424
E-MAIL: HAWS@HAWS.CO.COM
WEBSITE: WWW.HAWS.CO.COM

EGN NO. REVISED PERBY:	MODEL(S)	PART NUMBER
5220 EGN: 5972 FV	1920/1920HPS/1920W	0510000490.D
DRAWN: JC		REVISION
JP		12
APPROVED: FV	DATE: 04/15/24	SCALE: N/A
	DRAWING TYPE:	INSTALLATION
	SIZE: A1	SHEET 6 OF 8

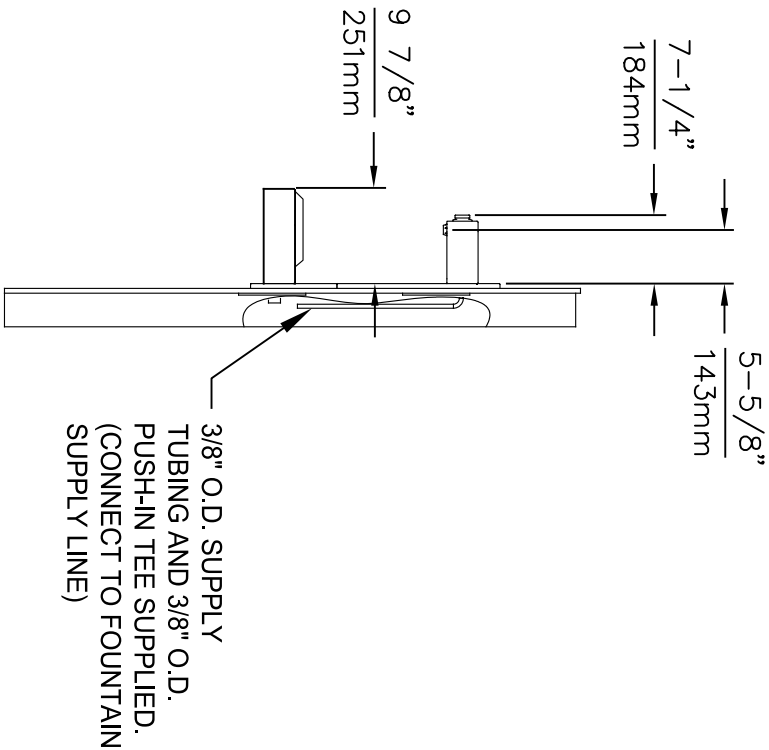
6700 MOUNTING PLATE
(BEHIND FINISH WALL)
- OR -
6700R RETROFIT PLATE
(ON TOP OF FINISH WALL)

* MODELS 1920 (BOTTLE FILLER),
BP15, BP6 (BACK PANELS) AND
6468 (WASTE DRIP TRAY) ARE
ALL AVAILABLE TOGETHER AS
MODEL 1922.



INSTALLATION ABOVE 6468

1. SEE SEPARATE INSTALLATION DRAWINGS FOR MOUNTING PLATE, WASTE DRIP TRAY AND BACK PANELS (SHOWN FOR REFERENCE - NOT SUPPLIED).
2. WHEN INSTALLING THIS UNIT, LOCAL, STATE OR FEDERAL CODES SHOULD BE ADHERED TO FOR INSTALLATION LOCATIONS, WASTE & SUPPLY REQUIREMENTS OTHER THAN SHOWN.



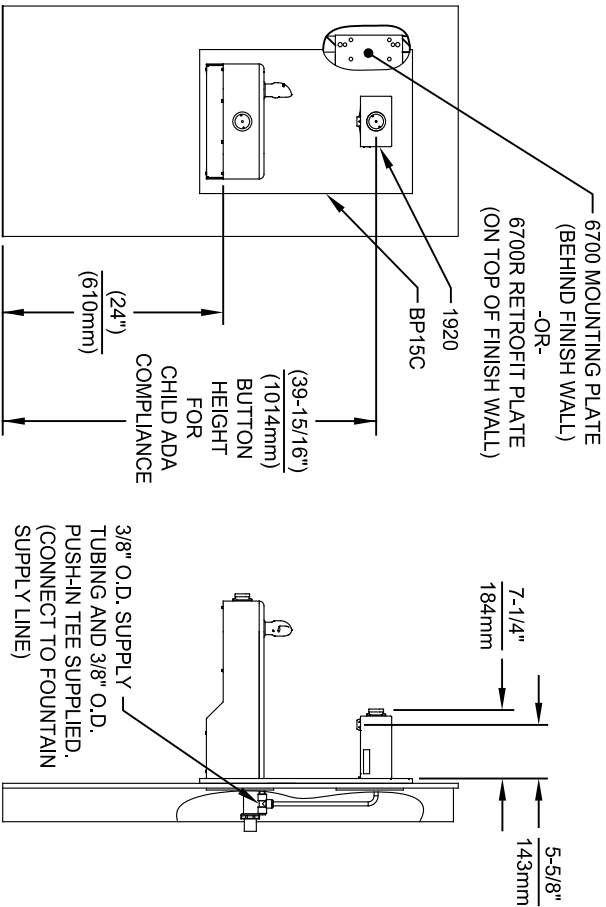


Haws
Since 1906

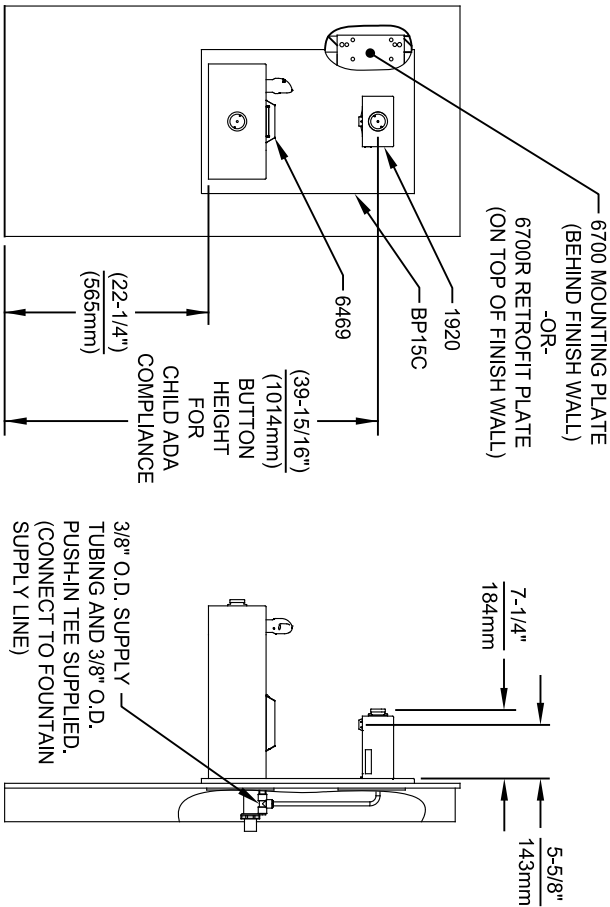
1455 KLEPPLE LANE
SPARKS, NEVADA 89431
(775) 359-4712 FAX (775) 359-424
E-MAIL: HAWS@HAWSCO.COM
WEBSITE: WWW.HAWSCO.COM

ECN NO. REVISED PER BY: DATE: SCALE: N/A DRAWING TYPE: INSTALLATION SIZE: A1 SHEET: 7 OF 8

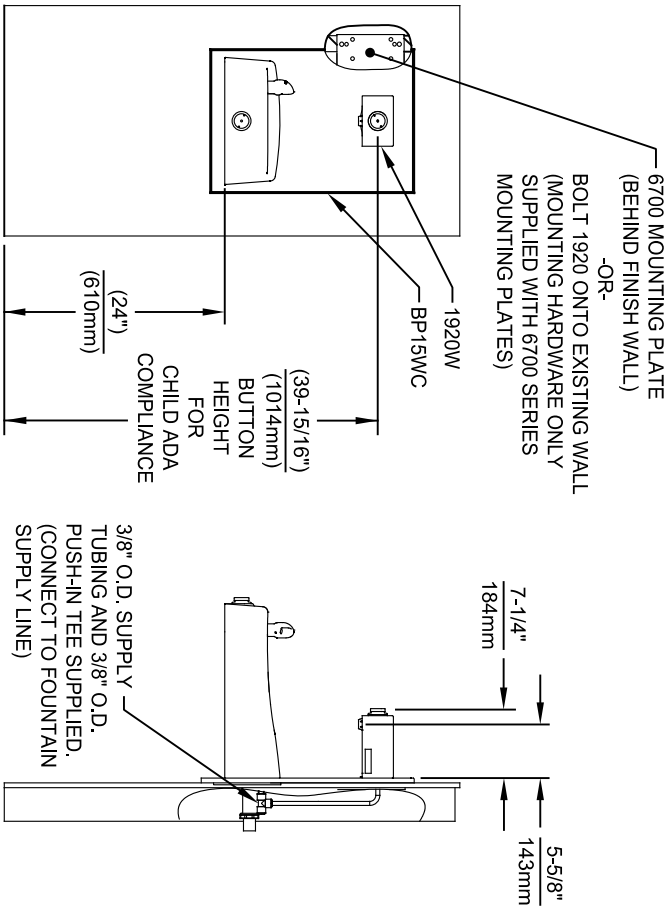
9807	ECN: 9972	FV	MODEL(S)	1920/1920HPS/1920W	PART NUMBER
DP	10/27/20	JC			0510000490.D
APPROVED:	DATE:				REVISION:
FV	04/19/24				12



INSTALLATION ABOVE HAWS 1107L & H1107.8 SERIES



INSTALLATION ABOVE HAWS 1109, 1109.14 & H1109.8 SERIES



INSTALLATION ABOVE HAWS 1311

NOTES:

1. HEIGHT DIMENSIONS SHOWN ARE FOR CHILD ADA APPLICATIONS:
 - BOTTLE FILLER HEIGHT AT 40" MAX.
 - DRINKING FOUNTAIN BUBBLER HEIGHT AT 30" MAX.
 - (SEE SHEETS 3, 4 & 5 FOR ADULT ADA HEIGHT DIMENSIONS)
2. SEE SEPARATE INSTALLATION DRAWINGS FOR MOUNTING PLATES AND BACK PANELS (SHOWN FOR REFERENCE - NOT SUPPLIED).
3. WHEN INSTALLING THIS UNIT, LOCAL, STATE OR FEDERAL CODES SHOULD BE ADHERED TO FOR INSTALLATION LOCATIONS, WASTE & SUPPLY REQUIREMENTS OTHER THAN SHOWN.



Haws®
Since 1906

1455 KLEPPLE LANE
SPARKS, NEVADA 89431
(775) 359-4712 FAX (775) 359-1424
E-MAIL: HAWS@HAWS.CO.COM
WEBSITE: WWW.HAWS.CO.COM

ECON. REVISED PERBY:		MODEL(S)	
9807	ECON. 9972	1920/1920HPS/1920W	
DRAWN:	DATE:	CHKD:	
FV	01/26/24	JC	
APPROVED:	DATE:	SCALE:	DRAWING TYPE:
FV	04/19/24	N/A	INSTALLATION
SIZE: A1		SHEET 8 OF 8	
PART NUMBER		REVISION	
0510000490.D		12	