

## FEATURES & BENEFITS

### ADA COMPLIANCE

ADA-compliant drinking fountain required for wheel chair use, and for the standing person.

### FRONT APPROACH

Face the water stations frontward and the overall footprint needed decreases, saving 33% of the hard scape required for access compliance. This also allows the fountain to be placed with its back to within 8 inches of a wall or a fence.

### FREEZE-RESISTANT VALVE

Fully-engineered system with the pneumatic-operated, freeze-resistant valve installed below frost line to drain water to non-freezing depth allowing fountain to function year round. Assembly can be lifted to surface and lowered back into casing for easy maintenance without disturbing the fountain.

### CONSTRUCTION

Heavy-duty stainless steel with silver powder-coated finish, and stainless-steel drinking fountain bowls. Modular construction allows for easy replacement or rearrangement of drinking fountain bowls and bottle filler modules.

### BUBBLER HEADS

Polished chrome-plated brass bubbler heads with integral 5/8" dia. threaded shanks for vandal resistant strength, and top-down access for nozzle replacement or water line service, with .45 gpm flow rate.

### VANDAL RESISTANT

The bubbler heads, push buttons, drain strainers and bottom plates are locked in place, discouraging unwanted vandal tampering.

### DRAIN CLEAN-OUT

Top-down access to the drain allows the fountain to be cleaned without taking the unit apart, good for outdoor settings with drain-clogging sand or leaves.



## SPECIFICATIONS

Model 3603FR outdoor, freeze-resistant ADA vandal-resistant pedestal drinking fountain shall include a heavy-duty stainless steel pedestal with matte silver powder coating, three drinking fountain stations, fully engineered pneumatic valve assemblies, polished chrome-plated brass vandal resistant shielded bubbler heads with integral 5/8" dia. threaded shank and top-down access to renewable nozzles, 100% lead-free waterways, polished chrome-plated vandal-resistant waste strainers with top-down clean-out access to the drain, vandal-resistant access plates, integral mounting feet, and 1-1/2" slip waste. In extreme environments related to heat and cold, product(s) must be protected from damage/exposure due to these extreme conditions. In extreme environments related to heat and cold, product(s) must be protected from damage/exposure due to these extreme conditions.

**REQUIRES MODELS 3603FR, 6518FR & 6518.2FR PURCHASED SEPARATELY.** Consult with the local authority having jurisdiction before installation in order to determine if any additional regulations or requirements may apply)

## OPTIONS

- Installation Aid: Model MTG.3600, mounting plate for 3600 series pedestals.

For more information, visit [www.hawscos.com](http://www.hawscos.com) or call (888) 640-4297.

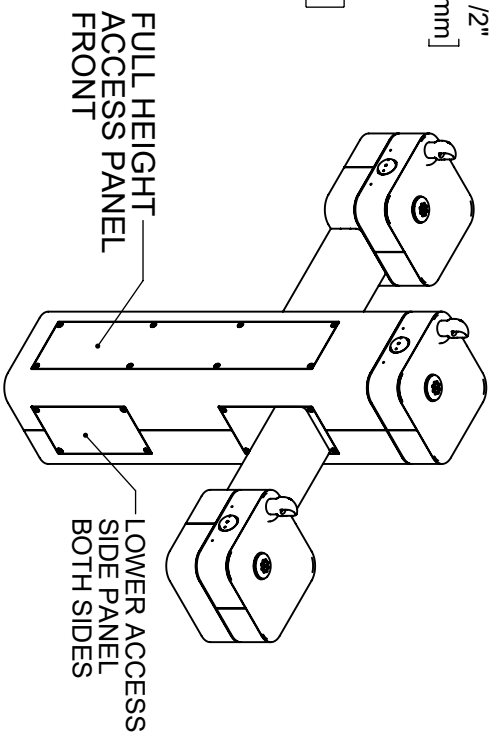
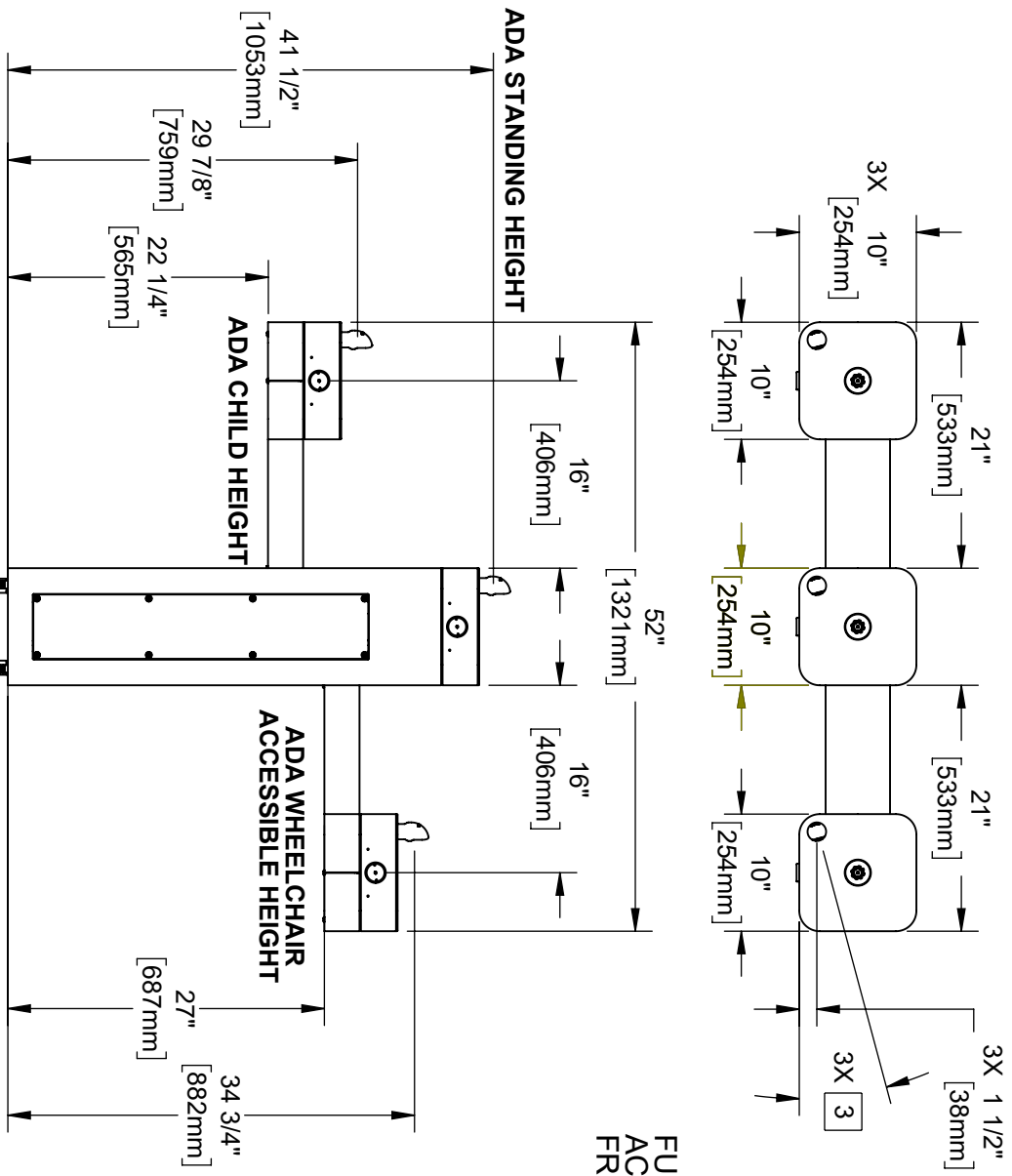
## APPLICATIONS

The 3603FR offers a solution for the changing needs of outdoor settings as well as outdoor wheelchair access, appealing to all users through accessibility and safety. This drinking fountain is ideal in areas such as parks, schools, and other outdoor areas where hydration facilities are needed. Model meets all current Federal Regulations for the disabled including those in the Americans with Disabilities Act. Haws manufactures drinking fountains, faucets and electric water coolers to be lead-free by all known definitions including NSF/ANSI/CAN 61-Section 9, NSF/ANSI/ CAN 372, California Proposition 65, and the Federal Safe Drinking Water Act. Product is compliant to California Health and Safety Code 116875 (AB 1953-2006), and 116876 (AB 100) "NSF/ANSI/CAN 61: Q ≤ 1".



NOTES:

1. WHEN INSTALLING THIS UNIT, LOCAL, STATE, OR FEDERAL CODES SHOULD BE ADHERED TO. INSTALL A TRAP IN THE WASTE LINE AND A SCREWDRIVER STOP IN THE SUPPLY LINE IF REQUIRED.
2. ARM HEIGHT CAN BE CONFIGURED AS DESIRED, REFER TO SHEET 7 FOR ALTERNATE CONFIGURATIONS
3. MAXIMUM ADJUSTABLE RANGE IS 15° FROM PARALLEL TO BACK OF WALL.



HAWS MODEL 3603FR IS FULLY COMPLIANT WITH THE FEDERAL 2010 AMERICANS WITH DISABILITIES ACT (ADA) ACCESSIBILITY REQUIREMENTS WHEN INSTALLED AS SHOWN HERE AND WHEN INSTALLED WITH PROPER CLEARANCES AND ACCESS. IT IS THE RESPONSIBILITY OF THE INSTALLER TO ADHERE TO LOCAL, STATE, AND FEDERAL CODES WHEN INSTALLING THIS UNIT. DISTANCE TO SURROUNDING OBJECTS, APPROACH SURFACES, ETC. SHOULD BE CONSIDERED. REFER TO SHEET 8 FOR MORE INFORMATION.

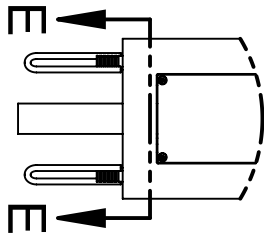
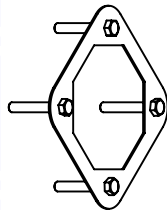
CONCRETE ANCHORS INCLUDED.  
RE-USABLE TEMPLATE MODEL MTG.3600  
AVAILABLE, SOLD SEPARATELY.

		1455 KLEPPE LANE SPARKS, NEVADA 89431 (775) 359-4712 FAX (775) 359-7424 E-MAIL: HAWS@HAWSCO.COM WEBSITE: WWW.HAWSCO.COM	
ENCL	REV. ECL	BY:	MODEL(S)
5226	5922	JU	3603FR
DRAWN	DATE	CRD	
8/1/22	8/1/22	BLM	
APPROVED	DATE	SCALE	DRAWING TYPE
FV	07/12/22	1:16	INSTALLATION
		SIZE	SHEET 1 OF 8
		A	5
		PART NUMBER 0510000762.D	
		REVISION	

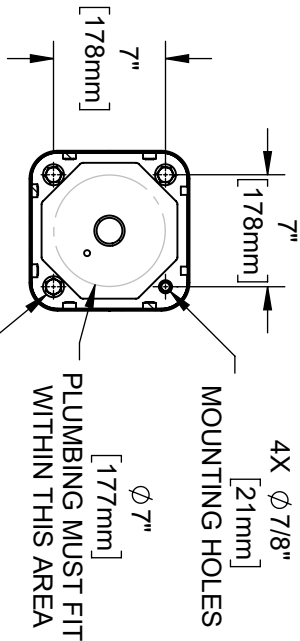
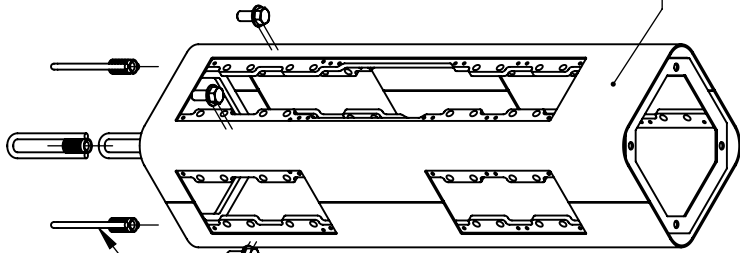
# INSTALLATION INSTRUCTIONS

## MODEL MTG.3600

(OPTIONAL)  
TEMPLATE FOR  
SPACING ANCHORS  
DURING CONCRETE  
POUR



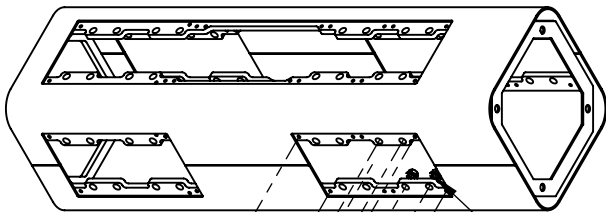
FRONT FACE



4X 5/8" BOLTS AND  
WASHERS (SUPPLIED)

4X CAST-IN ANCHORS  
(SUPPLIED). SET AT  
7" SQUARE SPACING  
AND ORIENT AS SHOWN

4X 5/8" BOLTS  
AND WASHERS  
SUPPLIED WITH  
ANCHORS



4X 3/8" NUTS

4X 1/4" FLAT HEAD  
SCREWS

PLATE, ORIENT  
AS SHOWN

4X 3/8" BOLTS

FOUNTAIN ARM

## STEP 1

MOUNT PEDESTAL TO CONCRETE SLAB IN DESIRED ORIENTATION. SLAB TO BE 30" MINIMUM SQUARE AND 6" MINIMUM THICK (BY OTHERS). PLUMBING CAST IN CONCRETE MUST FIT IN 7" DIAMETER AREA CENTERED UNDER PEDESTAL LOCATION. FOR 3603FR MODEL, SEE REQUIRED BURY VALVE (NOT SUPPLIED) INSTALLATION REQUIREMENTS ON SHEET 6.

## STEP 2

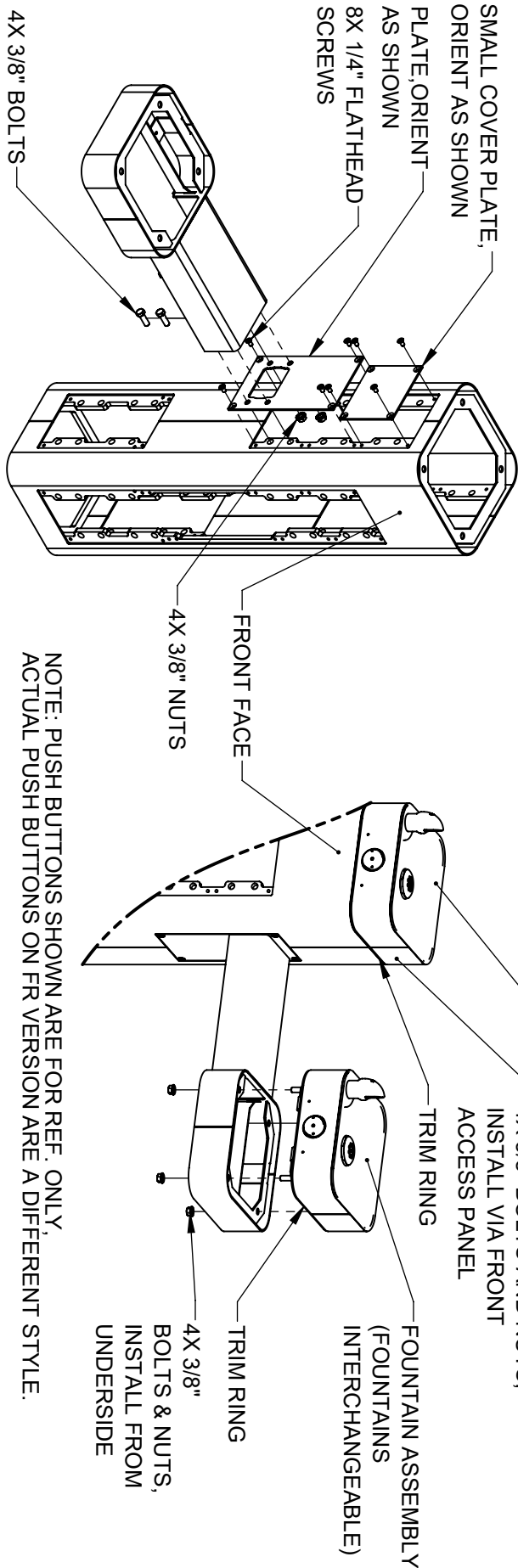
REMOVE BOTTOM COVER PLATES FROM ARMS BY REMOVING 3 1/4" BUTTON HEAD SCREWS. INSTALL ONE FOUNTAIN ARM ON RIGHT SIDE AS SHOWN. USE 1/4" FLAT HEAD SCREWS (SUPPLIED) TO INSTALL PLATE. USE 3/8" BOLTS AND NUTS (SUPPLIED) AND TORQUE TO 18 FT-LBS TO INSTALL ARM.



1455 KLEPPE LANE  
SPARKS, NEVADA 89431  
(775) 359-4712 FAX (775) 359-7424  
E-MAIL: HAWS@HAWS.CO.COM  
WEBSITE: WWW.HAWS.CO.COM

ECN	REV. ECN	BY	MODEL(S)	PART NUMBER
5226	5922	JU	3603FR	0510000762.D
DRAWING	DATE	CHK'D		REVISION
10/12/22	10/12/22	BM		5
APPROVED	DATE	SCALE	1:12	DRAWING TYPE
FV	07/12/22			INSTALLATION
		SIZE	A	SHEET 2 OF 8

# INSTALLATION INSTRUCTIONS




NOTE: PUSH BUTTONS SHOWN ARE FOR REF. ONLY, ACTUAL PUSH BUTTONS ON FR VERSION ARE A DIFFERENT STYLE.

## STEP 3

INSTALL REMAINING ARM ON LEFT SIDE AS SHOWN. USE 1/4" FLAT HEAD SCREWS (SUPPLIED) TO INSTALL PLATES. USE 3/8" BOLTS AND NUTS (SUPPLIED) AND TORQUE TO 18 FT-LBS TO INSTALL ARM.

## STEP 4

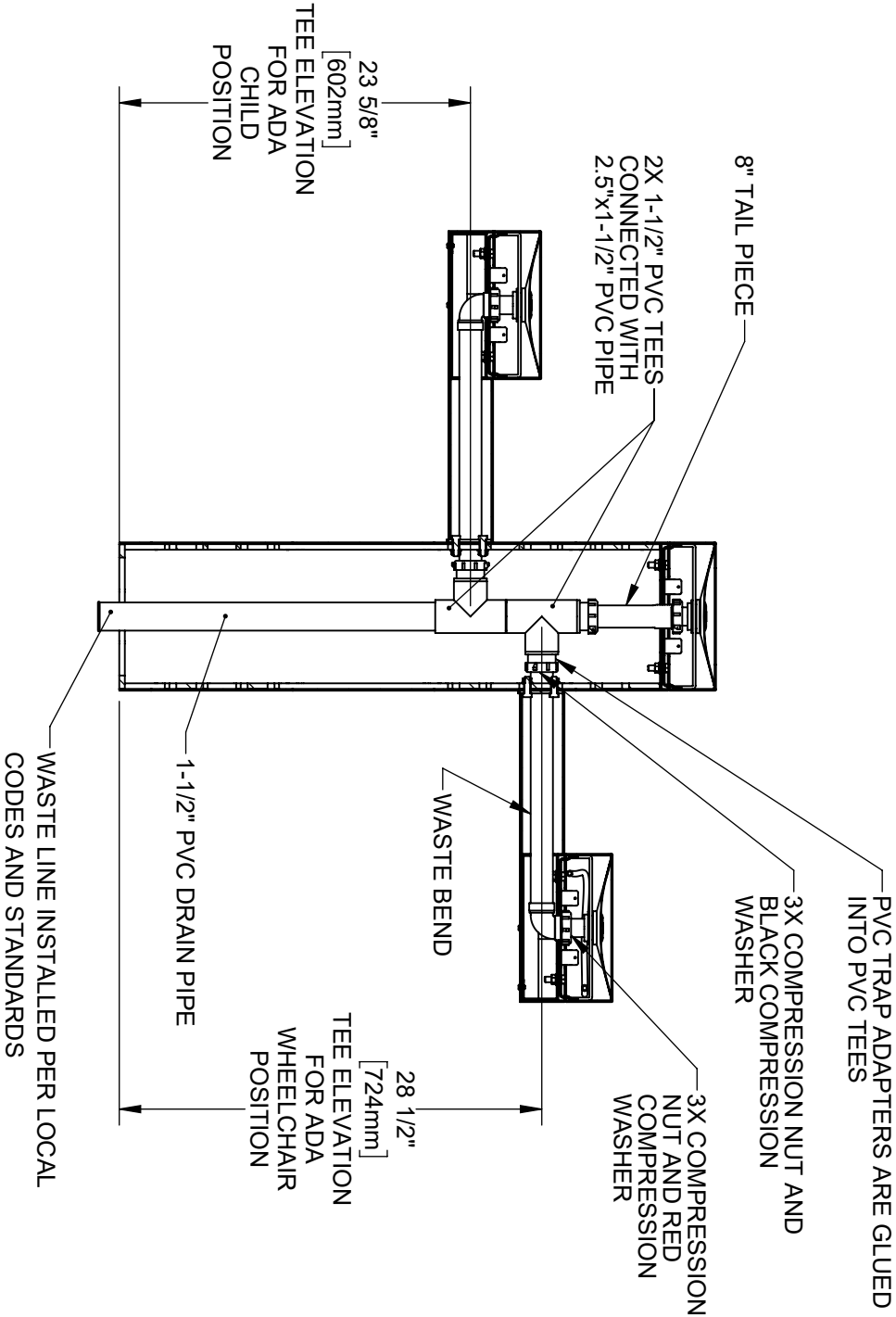
PLACE SQUARE TRIM RING ON TOP OF PEDESTAL AND PLACE ONE FOUNTAIN ASSY. ON TOP OF TRIM RING, FACING THE FRONT. USE 3/8" BOLTS AND NUTS VIA THE FRONT ACCESS PANEL TO SECURE FOUNTAIN ASSY TO PEDESTAL. PLACE TRIM RING AND INSTALL REMAINING FOUNTAIN ASSEMBLIES ON ARM AS SHOWN. CAREFULLY CENTER TRIM RINGS AND TORQUE BOLTS AND NUTS TO 18 FT-LBS



1455 KLEPPE LANE  
SPARKS, NEVADA 89431  
(775) 359-4712 FAX (775) 359-7424  
E-MAIL: HAWS@HAWS.CO.COM  
WEBSITE: WWW.HAWS.CO.COM

ECN	REV/ECN	BY	MODEL(S)	PART NUMBER
5226	5922	JLU	3603FR	0510000762.D
DRAWN	DATE	CHKD		REVISION
5/10/22	8/10/22	BLM		5
APPROVED	DATE	SCALE	DRAWING TYPE	
FV	07/12/22	1:12	INSTALLATION	
		SIZE	A	SHEET 3 OF 8

INSTALLATION INSTRUCTIONS



STEP 5

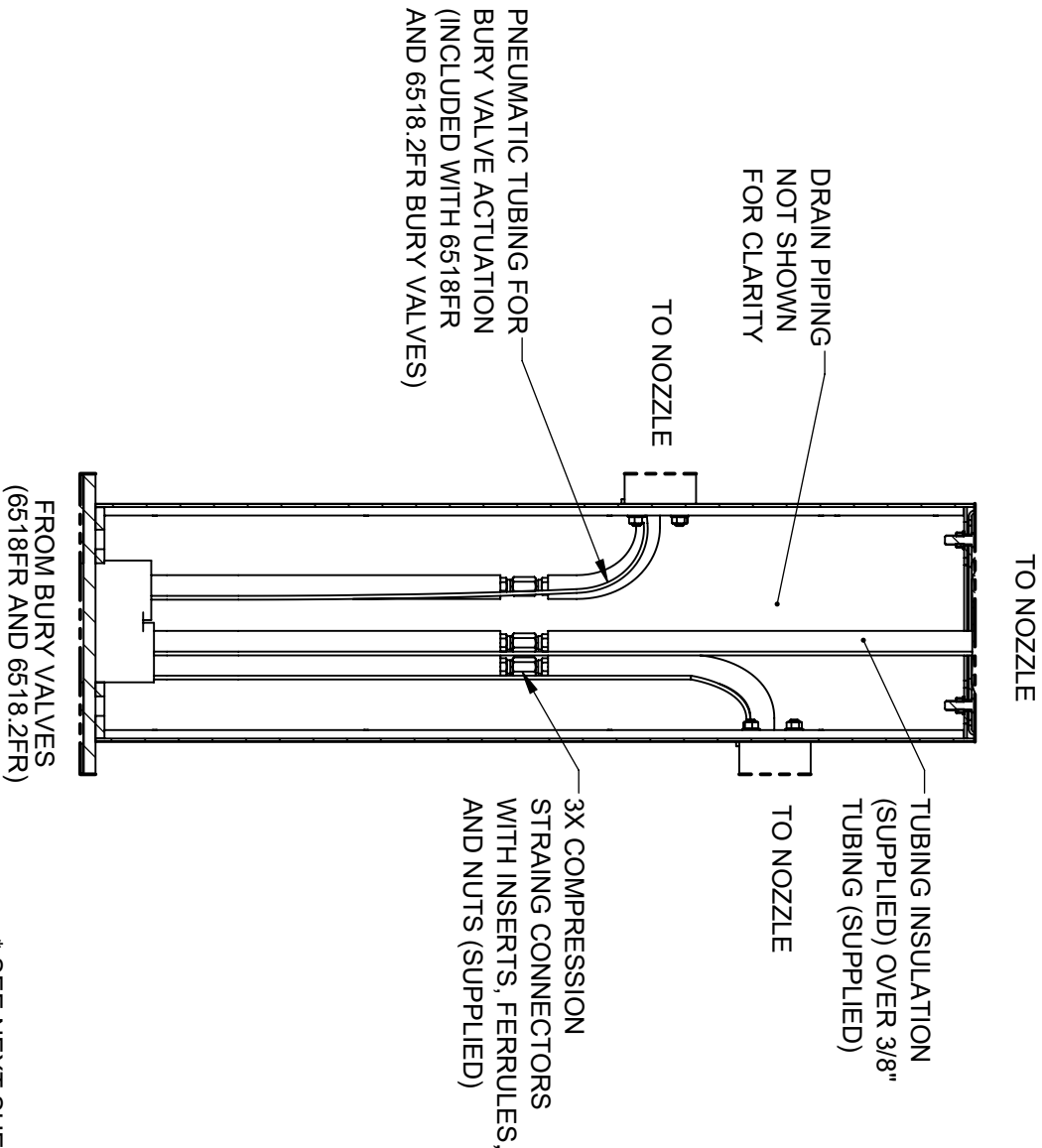
INSTALL SUPPLIED DRAIN COMPONENTS AS SHOWN. RED COMPRESSION WASHERS ADAPT FROM 1-1/4" TO 1-1/2" AT EACH DRAIN TAIL PIECE. BLACK COMPRESSION WASHERS ARE USED IN TRAP ADAPTERS AT TEE. USE APPROPRIATE PVC CEMENT TO MAKE SOLVENT CEMENT CONNECTIONS. TRIM WASTE BEND AND/OR TAIL PIECE LENGTH IF REQUIRED. NOTE THAT EXTRA PARTS MAY BE INCLUDED TO FACILITATE OTHER CONFIGURATIONS OF THIS FOUNTAIN.



1455 KLEPPE LANE  
SPARKS, NEVADA 89431  
(775) 359-4712 FAX (775) 359-7424  
E-MAIL: HAWS@HAWS.CO.COM  
WEBSITE: WWW.HAWS.CO.COM

ECN	REV/ECN	BY	MODEL(S)	PART NUMBER
5226	5922	JU	3603FR	0510000762.D
DRAWN	DATE	CHKD		REVISION
10/20/20	8/10/20	BJM		5
APPROVED	DATE	SCALE	DRAWING TYPE	
FV	07/12/22	1:12	INSTALLATION	
		SIZE	A	SHEET 4 OF 8

INSTALLATION INSTRUCTIONS



3603FR SUPPLY PLUMBING\*

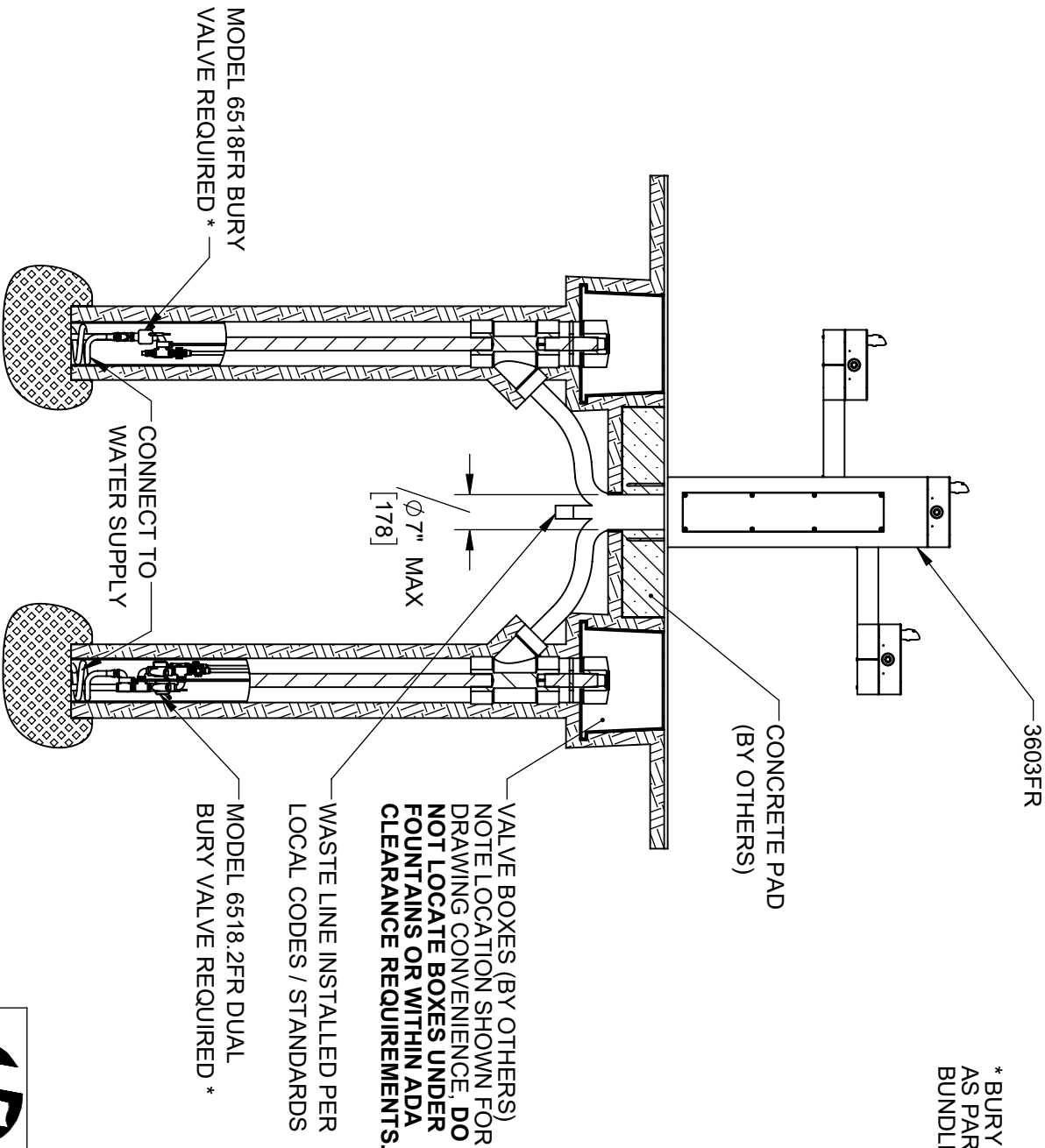
\* SEE NEXT SHEET OF THIS DRAWING FOR MORE INFORMATION ON INSTALLING BURY VALVES WITH THIS MODEL. BURY VALVES 6518FR AND 6518.2FR ARE PACKAGED SEPARATELY AS PART OF A FREEZE RESISTANT PRODUCT BUNDLE OR SOLD SEPARATELY

**STEP 6**  
COMPLETE WATER SUPPLY PLUMBING AS SHOWN. OPEN SUPPLY VALVE(S) AND TEST. REPLACE ARM BOTTOM PLATES AND PEDESTAL ACCESS PLATES. BURY VALVES (NOT SUPPLIED) ARE REQUIRED FOR 3603FR INSTALLATION. REFER TO BURY VALVE OPERATION AND MAINTENANCE MANUAL FOR ADDITIONAL INFORMATION



1455 KLEPPE LANE  
SPARKS, NEVADA 89431  
(775) 359-4712 FAX (775) 359-7424  
E-MAIL: HAWS@HAWS.CO.COM  
WEBSITE: WWW.HAWS.CO.COM

ECN	REV/ECN	BY	DATE	MODEL(S)	PART NUMBER
5226	5922	JU	07/12/22	3603FR	0510000762.D
DRAWN	DATE	CHKD	DATE	SCALE	SIZE
5226	07/12/22	BLM	07/12/22	1/8"	A
APPROVED	DATE	SCALE	DRAWING TYPE	INSTALLATION	SHEET 5 OF 8
FV	07/12/22	1/8"	INSTALLATION		5



\* BURY VALVES ARE PACKAGED SEPARATELY AS PART OF A FREEZE RESISTANT PRODUCT BUNDLE OR SOLD SEPARATELY

INSTALL BURY VALVES IN ACCORDANCE WITH MANUFACTURER'S INSTRUCTIONS. INSTALLATION MUST COMPLY WITH LOCAL CODES / STANDARDS, INCLUDING ADA CODES IF APPLICABLE.

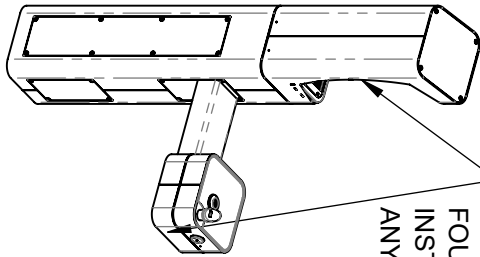
**3603FR GENERAL BURY VALVE LAYOUT  
(FOR REFERENCE ONLY)**

		1455 KLEPPE LANE SPARKS, NEVADA 89431 (775) 359-4712 FAX (775) 359-7424 E-MAIL: HAWS@HAWS.CO.COM WEBSITE: WWW.HAWS.CO.COM	
ECN: 5226	REV/ECN: BY: J.U.	MODEL(S)	
DRAWN: 5226	DATE: CHRD: 8/1/22		
APPROVED: F.V.	DATE: 07/12/22	SCALE: 1/24	DRAWING TYPE: INSTALLATION
		SIZE: A	SHEET 6 OF 8
		PART NUMBER: 3603FR	REVISION: 0510000762.D
			5

NOTES ON OPTIONAL CONFIGURATIONS

HAWES 3600FR SERIES OUTDOOR FOUNTAINS ARE MODULAR AND CAN BE ASSEMBLED AND CONFIGURED MANY DIFFERENT WAYS. DISPLAYED HERE ARE A FEW EXAMPLES. CONFIGURATIONS OTHER THAN THAT SHOWN IN THE INSTALLATION INSTRUCTIONS FOR THE 3603FR MAY AFFECT COMPLIANCE WITH ADA REGULATIONS. IT IS THE RESPONSIBILITY OF THE INSTALLER TO UNDERSTAND LOCAL, STATE, AND FEDERAL REGULATIONS AS APPLICABLE IF INSTALLING THIS FOUNTAIN IN CONFIGURATIONS OTHER THAN THAT INDICATED ON SHEET 1 (PAGE 6 OF 13).

BOTTLE FILLER AND FOUNTAINS CAN BE INSTALLED TO FACE ANY DIRECTION



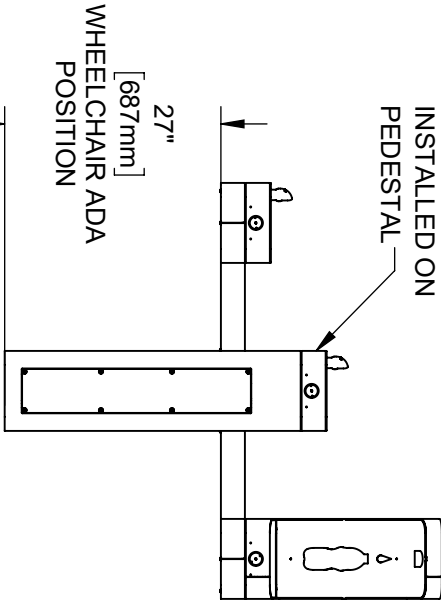
ADA ARM HEIGHT POSITION OPTIONS				
	LEFT SIDE*	RIGHT SIDE*	ARM HEIGHT (LOWER EDGE)	BUBBLER NOZZLE HEIGHT
STANDING ADA	YES (STD)	NO	31-7/8 [809 mm]	39-3/8 [999 mm]**
WHEELCHAIR ADA	YES	YES (STD)	27 [687 mm]	34-5/8 [878 mm]
CHILD ADA	YES	YES	22-1/4 [566 mm]	29-7/8 [757 mm]

\* RIGHT AND LEFT CAN BE REVERSED IF PEDESTAL IS ROTATED 180°.

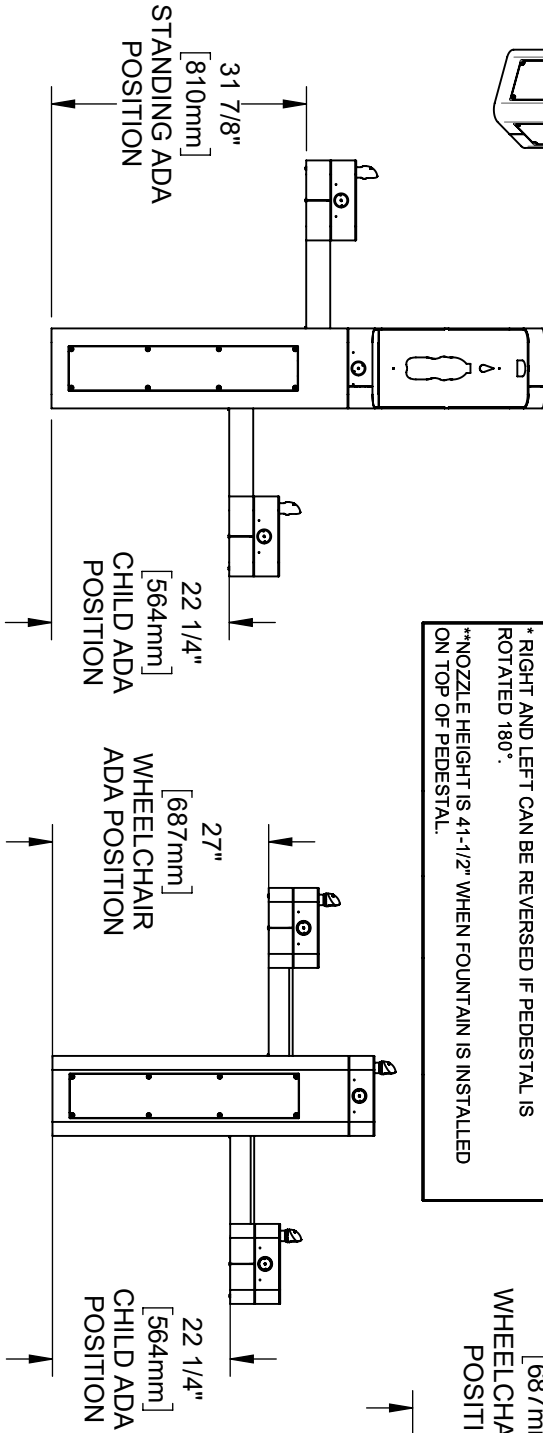
\*\* NOZZLE HEIGHT IS 41-1/2" WHEN FOUNTAIN IS INSTALLED ON TOP OF PEDESTAL.

BOTTLE FILLER CAN BE INSTALLED ON ARMS

ADA STANDING HEIGHT FOUNTAIN INSTALLED ON PEDESTAL



27" [687mm]  
WHEELCHAIR ADA POSITION



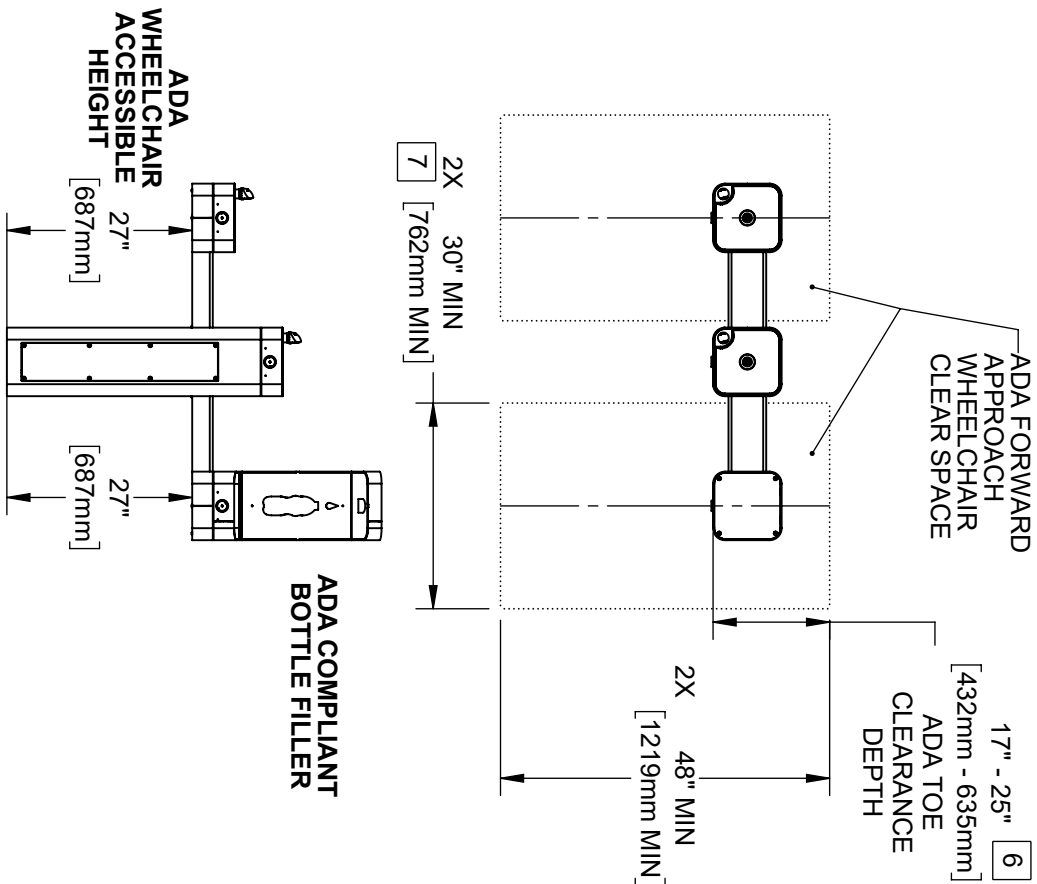
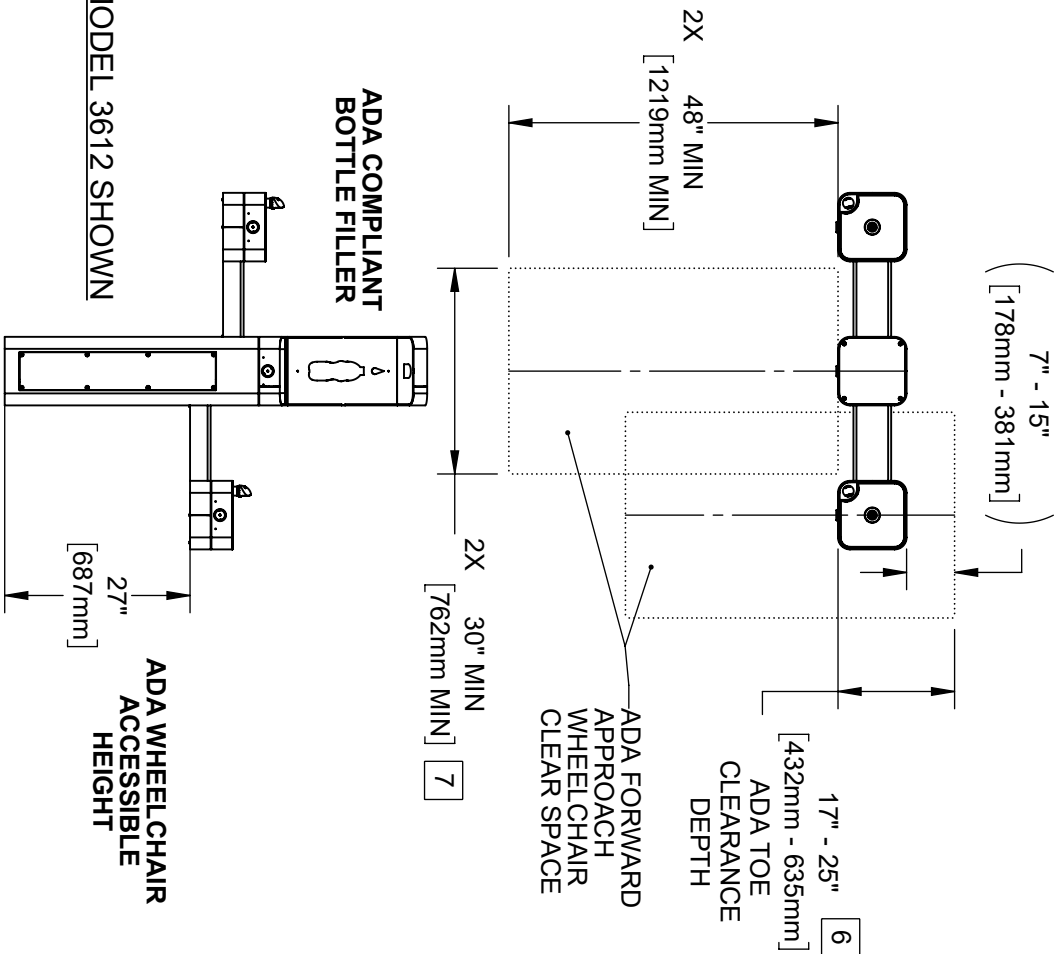
1455 KLEPPE LANE  
SPARKS, NEVADA 89431  
(775) 359-4712 FAX (775) 359-7424  
E-MAIL: HAWS@HAWSCOCO.COM  
WEBSITE: WWW.HAWSCOCO.COM

ECN: 5226	REV/ECN: 5922	BY: JLU	MODEL(S): 3603FR	PART NUMBER: 0510000762.D
DRAWN: JLU	DATE: 07/12/22	CHKD: BLM	SCALE: 1/24	REVISION: 5
APPROVED: FV	DATE: 07/12/22	SCALE: 1/24	DRAWING TYPE: INSTALLATION	SHEET 7 OF 8



NOTES:

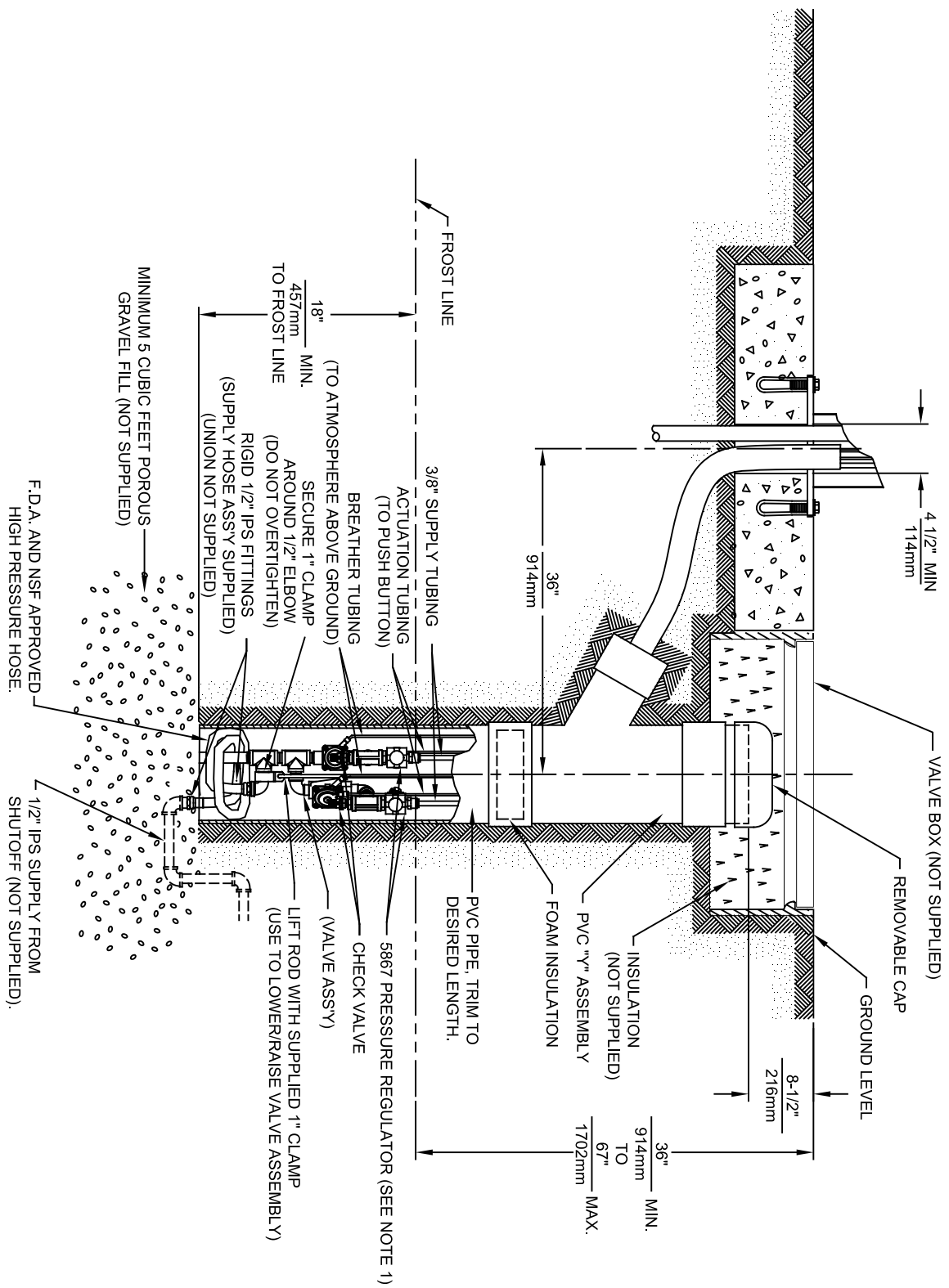
4. CLEAR FLOOR SPACES APPLY FOR ALL MODELS WITH A DRINKING FOUNTAIN OR BOTTLE FILLER INSTALLED AT ADA WHEELCHAIR ACCESSIBLE HEIGHT AND PEDESTAL MOUNTED BOTTLE FILLERS.
5. ORIENTATION OF CLEAR FLOOR SPACE IS DEPENDENT ON THE FOUNTAIN OR BOTTLE FILLER ORIENTATION.
6. SOME CALIFORNIA JURISDICTIONS MAY REQUIRE 18" MIN.
7. SOME CALIFORNIA JURISDICTIONS MAY REQUIRE 32" MIN.
8. REFER TO ADA STANDARDS AND/OR YOUR LOCAL BUILDING CODE FOR CLEAR SPACE GUIDELINES FOR PARALLEL APPROACH.




MODEL 3612 ALTERNATE CONFIGURATION SHOWN

THESE HAWS MODELS ARE FULLY COMPLIANT WITH THE FEDERAL 2010 AMERICANS WITH DISABILITIES ACT (ADA) ACCESSIBILITY REQUIREMENTS WHEN INSTALLED AS SHOWN HERE AND WHEN INSTALLED WITH PROPER CLEARANCES AND ACCESS. IT IS THE RESPONSIBILITY OF THE INSTALLER TO ADHERE TO LOCAL, STATE, AND FEDERAL CODES WHEN INSTALLING THIS UNIT. DISTANCE TO SURROUNDING OBJECTS, APPROACH SURFACES, ETC. SHOULD BE CONSIDERED.

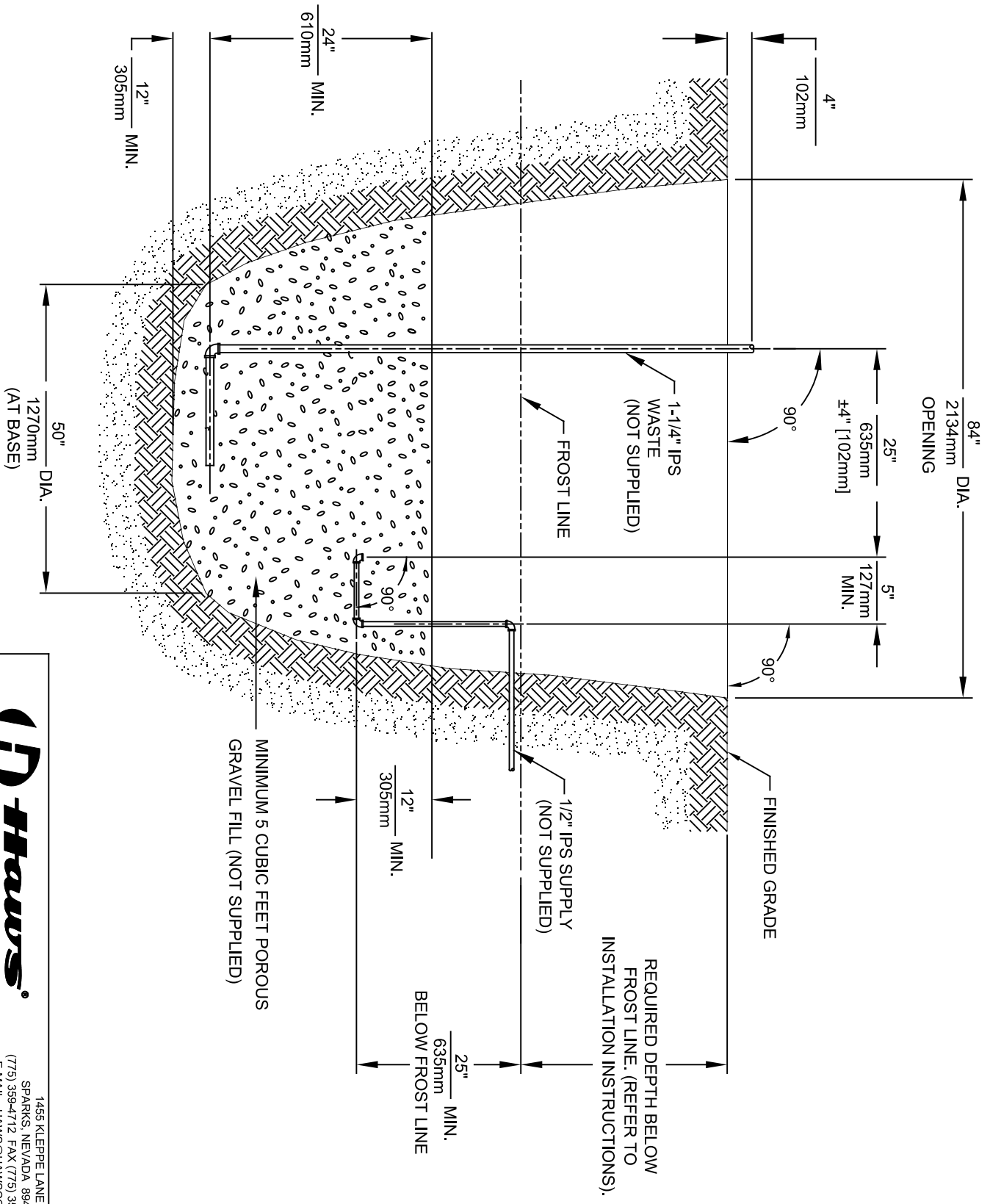
		1455 KLEPPE LANE SPARKS, NEVADA 89431 (775) 359-4712 FAX (775) 359-7424 E-MAIL: HAWS@HAWS.CO.COM WEBSITE: WWW.HAWS.CO.COM	
ENCL	REV/ENCL	BY:	MODEL(S)
5226	5922	JU	3603FR
DRAWING	DATE	CRD	
5226	07/12/22	BLM	
APPROVED	DATE	SCALE	DRAWING TYPE
FV	07/12/22	1/28	INSTALLATION
		SIZE	SHEET 8 OF 8
		A	5
		PART NUMBER 0510000762.D	
		REVISION	




**Haws®**  
Since 1906

1456 KLEPPE LANE  
SPARKS, NEVADA 89431  
(775) 359-4712 FAX (775) 359-7424  
E-MAIL: HAWS@HAWS.CO.COM  
WEBSITE: WWW.HAWS.CO.COM

ECN NO. REVISED PERBY:		MODEL(S)	
DRAWN:	DATE:	CHKD.	FV.
C.L.	09/22/92	J.C.	
APPROVED:	DATE:	SCALE:	DRAWING TYPE:
FV.	01/30/24	1:13	INSTALLATION
SIZE: A		SHEET 1 OF 3	
PART NUMBER		REVISION	
0002077791.D		24	





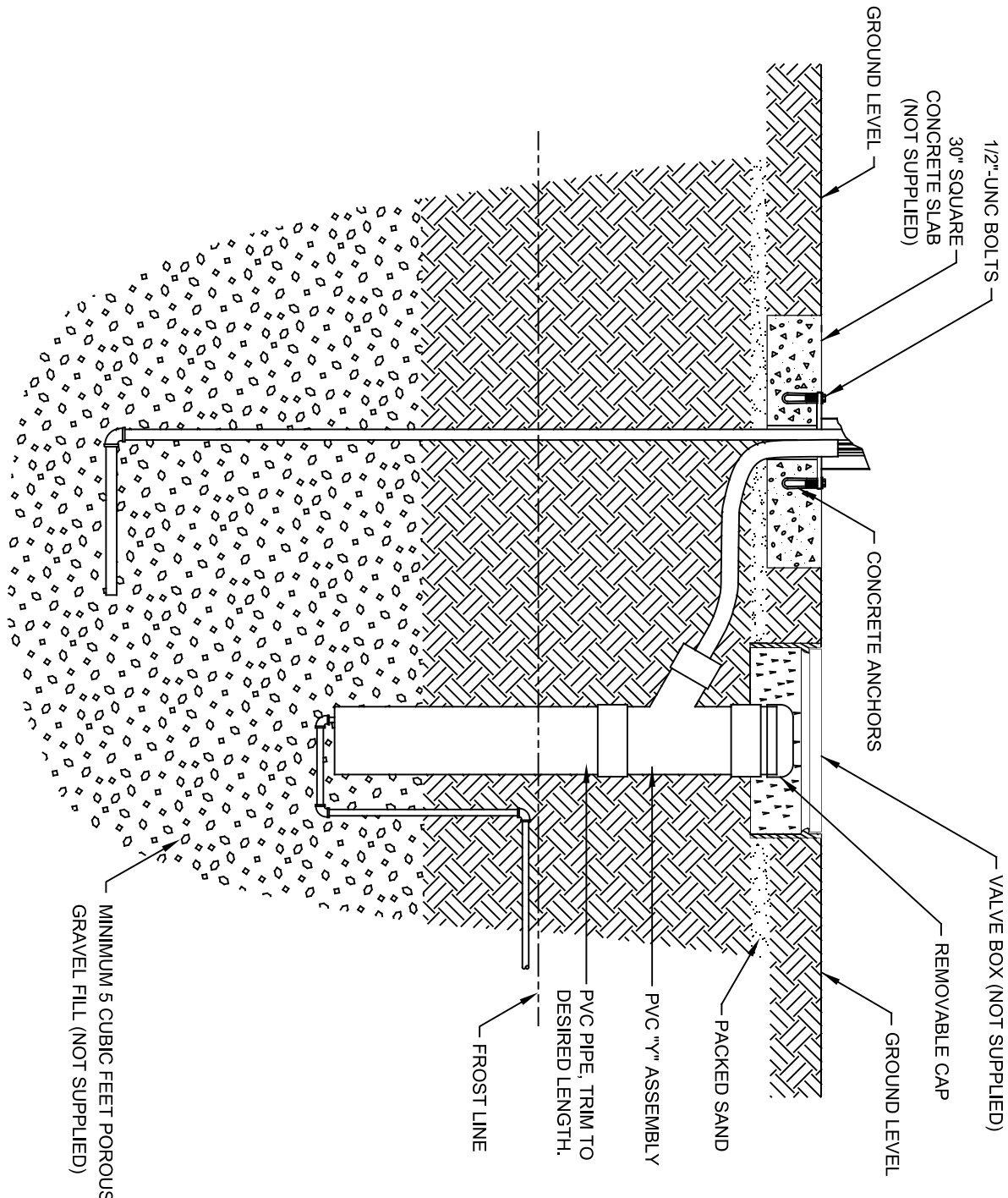
**Haws**  
Since 1906


1456 KLEPPE LANE  
SPARKS, NEVADA 89431  
(775) 359-4712 FAX (775) 359-7424  
E-MAIL: HAWS@HAWS.CO.COM  
WEBSITE: WWW.HAWS.CO.COM

ECN NO. REVISED PERBY: MODEL(S)  
DRAWN: ECN 6011 FV  
C.L. DATE: 09/22/92 CHKD. J.C.  
APPROVED: FV DATE: 01/30/24 SCALE: 1/2" = 1' DRAWING TYPE: INSTALLATION SIZE: A SHEET 2 OF 3

6518.2FR

PART NUMBER  
0002077791.D  
REVISION  
24



**Haws®**  
Since 1906

1456 KLEPPE LANE  
SPARKS, NEVADA, 89431  
(775) 359-4712 FAX (775) 359-7424  
E-MAIL: HAWS@HAWS.CO.COM  
WEBSITE: WWW.HAWS.CO.COM

ECN NO. REVISED PER BY:		MODEL(S)	
DRAWN:	DATE:	CHKD:	FV:
C.L.	09/22/92	J.C.	
APPROVED:	DATE:	SCALE:	DRAWING TYPE:
F.V.	01/30/24	1/24	INSTALLATION
SIZE: A		SHEET: 3	OF: 3
PART NUMBER		REVISION	
0002077791.D		24	