

FEATURES & BENEFITS

CONSTRUCTION

Unit is made of 14 gauge Type 304 stainless steel with a high polished finish that resists stains and corrosion, and has soft, rounded corners. Unit features vandal-resistant bottom plate.

VANDAL RESISTANT

The push button and bottom plate are locked in place, discouraging unwanted vandal tampering.

BOTTLE FILLER VALVE

With its patented stainless steel, push-button activated valve assembly which allows for front access stream adjustment as well as cartridge and strainer access, this bottle filler offers 100% lead free waterways. The valve works at an operating pressure range of 30 to 90 psi (2.1 to 6.2 bar).

LAMINAR FLOW

Adjustable, splash-free, 1 gpm (3.78 L) laminar water flow.

EFFICIENT & FLEXIBLE INSTALLATION

Unit is designed for retrofit or new construction applications. No drain required for mounting over existing drinking fountain.

MOUNTING OPTIONS

Select from mounting plate and back panel models to complete installation. Unit can mount on various wall types.



SPECIFICATIONS

Model 1920HPS wall mounted vandal-resistant high-polished stainless steel bottle filler shall include 100% lead-free waterways, 1 gpm (3.78 L) laminar flow, vandal-resistant push-button operated stainless steel valve with front-accessible cartridge and flow adjustment, and polished stainless steel construction. It can be used as a stand-alone station, or mounted above the Haws® 1001HPS and 1011HPS series drinking fountains.

This product requires a mounting plate; either the Haws model 6700 in-wall or the 6700R on-wall support plate.

APPLICATIONS

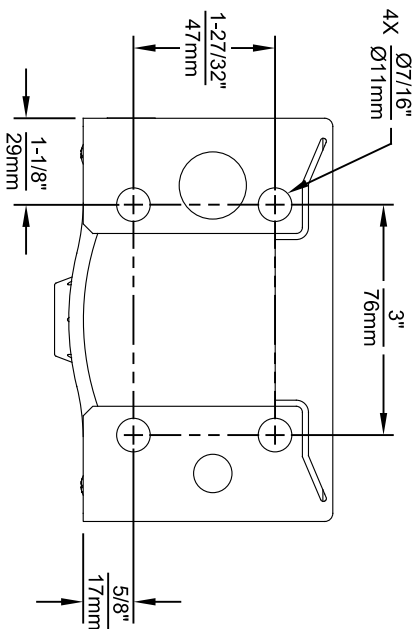
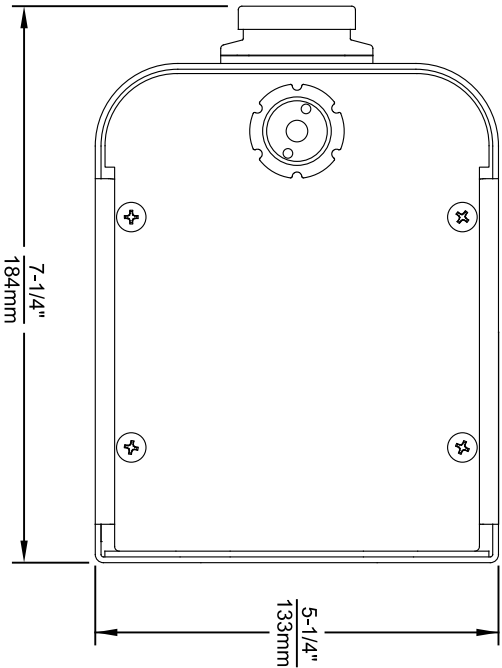
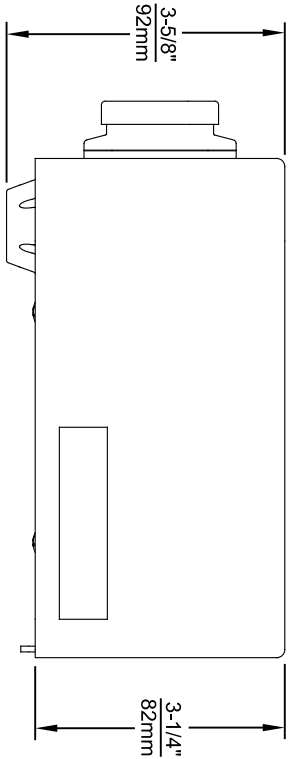
This type of wall mounted bottle filler may be placed in settings such as schools and other locations in and around office buildings with existing fountain installations where the temperature remains above freezing. Haws manufactures drinking fountains, faucets and electric water coolers to be lead-free by all known definitions including NSF/ANSI/CAN 61-Section 9, NSF/ANSI/CAN 372, California Proposition 65, and the Federal Safe Drinking Water Act. Product is compliant to California Health and Safety Code 116875 (AB 1953-2006), and 116876 (AB 100) "NSF/ANSI/CAN 61: Q ≤ 1"



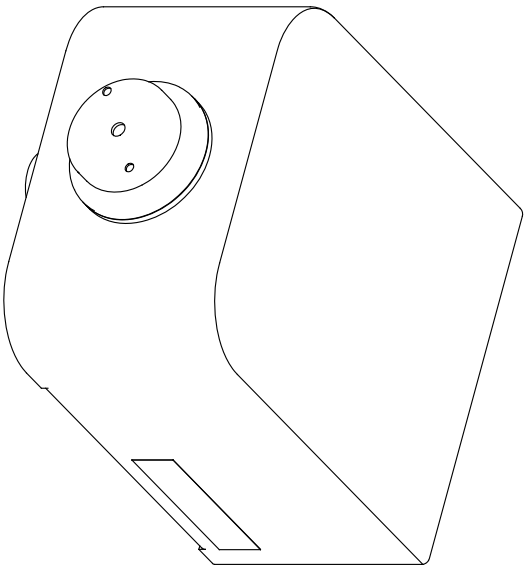
OPTIONS

- Water Filter: Model 6480 filter kit with 3000 gallon carbon block filter, filter head, and mounting bracket.
- Mounting Plate: Model 6700 in-wall mounting plate is used with the 1920 series bottle fillers for single or dual fountain retrofit installations.
- Mounting Plate: Model 6700R on-wall mounting plate is used with the 1920 series bottle fillers for single or dual fountain retrofit installations.
- Back Panel: Model BP15HPS, polished stainless steel 15" back panel for Model 1920HPS over single fountains.
- Back Panel: Model BP32HPS, polished stainless steel 32" back panel for model 1920HPS bottle filler over dual fountains.

For more information, visit www.hawscow.com or call (888) 640-4297.




1920 SERIES MOUNTING HOLE LOCATIONS
(3/8"-16 UNC MOUNTING HARDWARE NOT SUPPLIED)



NOTES:

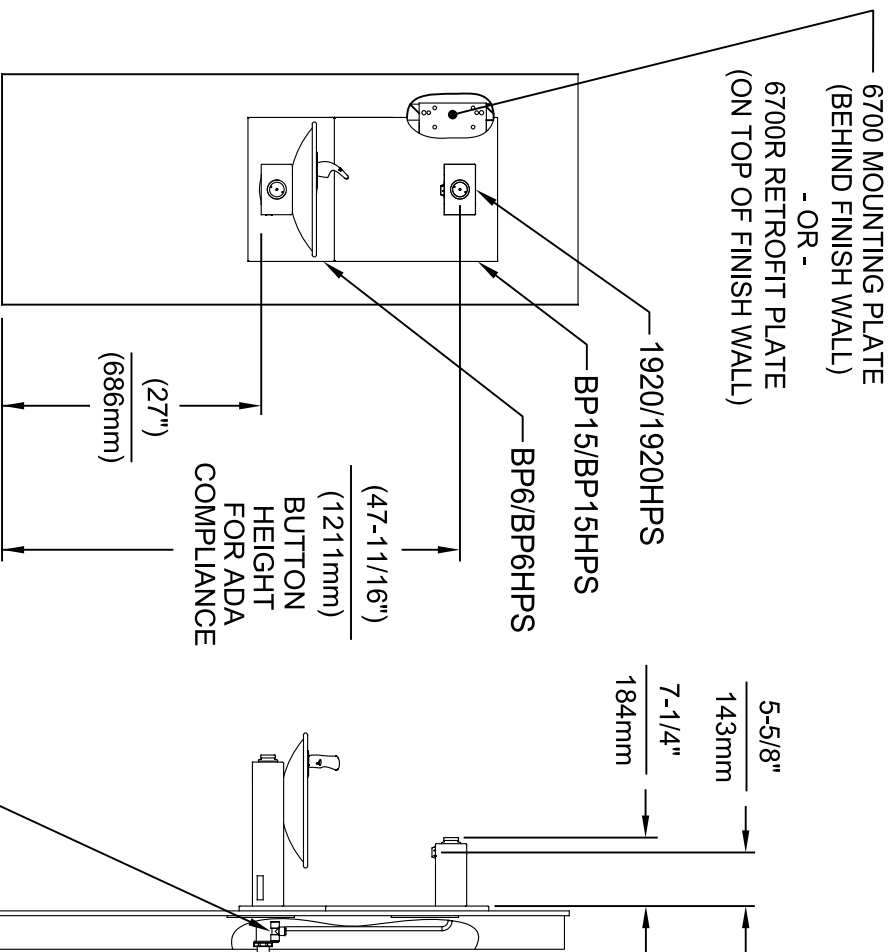
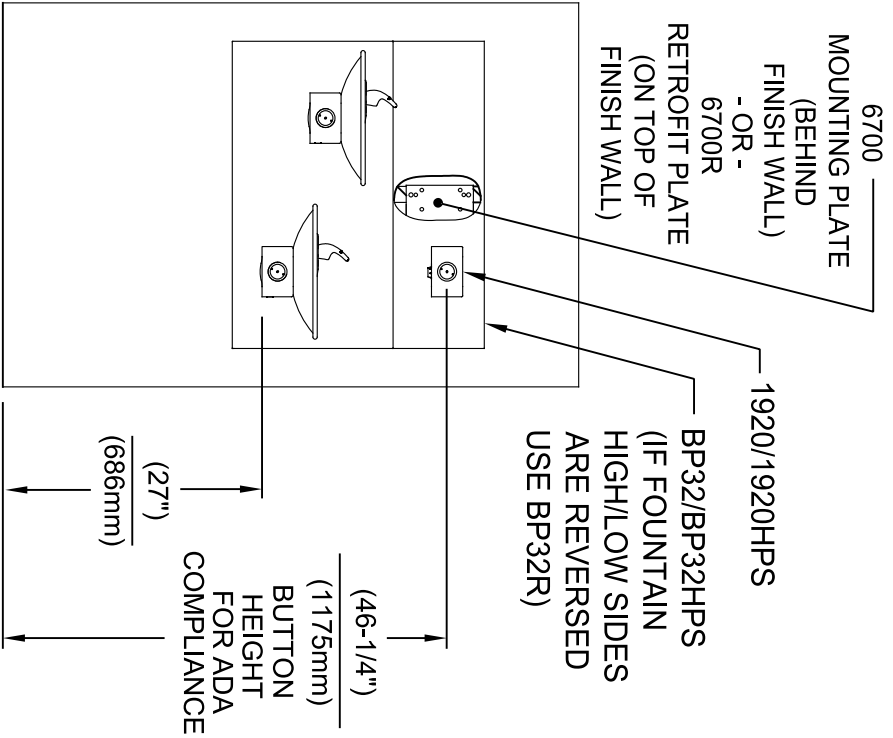
1. SEE SHEETS 2 THRU 7 FOR BOTTLE FILLER ADULT ADA HEIGHT APPLICATIONS AND SHEET 8 FOR CHILD ADA HEIGHT APPLICATIONS.
2. WHEN INSTALLING THIS UNIT, LOCAL, STATE OR FEDERAL CODES SHOULD BE ADHERED TO FOR INSTALLATION LOCATIONS, WASTE & SUPPLY REQUIREMENTS OTHER THAN SHOWN.



Haws
Since 1906

1455 KLEPPLE LANE
SPARKS, NE/VADA 89431
(775) 359-4712 FAX (775) 359-1424
E-MAIL: HAWS@HAWS.CO.COM
WEBSITE: WWW.HAWS.CO.COM

ECON. NO. REVISED PER BY:		MODEL(S)		PART NUMBER	
5081	ECON. 5972	FV		1920/1920HPS/1920W	0510000490.D
DRAWN:	DATE:	CHKD:			REVISION
DS	05/25/16	JC			12
APPROVED:		DATE:	SCALE:	DRAWING TYPE:	SIZE: A1 SHEET 1 OF 8
FV		04/19/24	N/A	INSTALLATION	



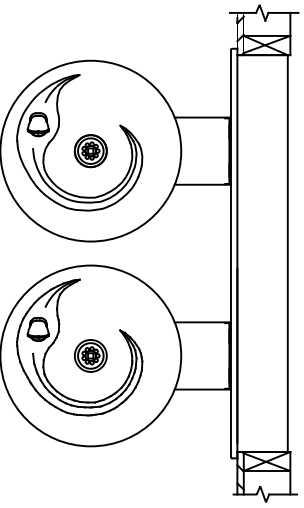
INSTALLATION ABOVE HAWS 1011 & H1011.8 SERIES

INSTALLATION ABOVE HAWS 1001 & H1001.8 SERIES

* IF YOUR FOUNTAIN IS THIS STYLE USE THESE DIMENSIONS

1. SEE SEPARATE INSTALLATION DRAWINGS FOR MOUNTING PLATES AND BACK PANELS (SHOWN FOR REFERENCE - NOT SUPPLIED).

2. WHEN INSTALLING THIS UNIT, LOCAL, STATE OR FEDERAL CODES SHOULD BE ADHERED TO FOR INSTALLATION LOCATIONS, WASTE & SUPPLY REQUIREMENTS OTHER THAN SHOWN.

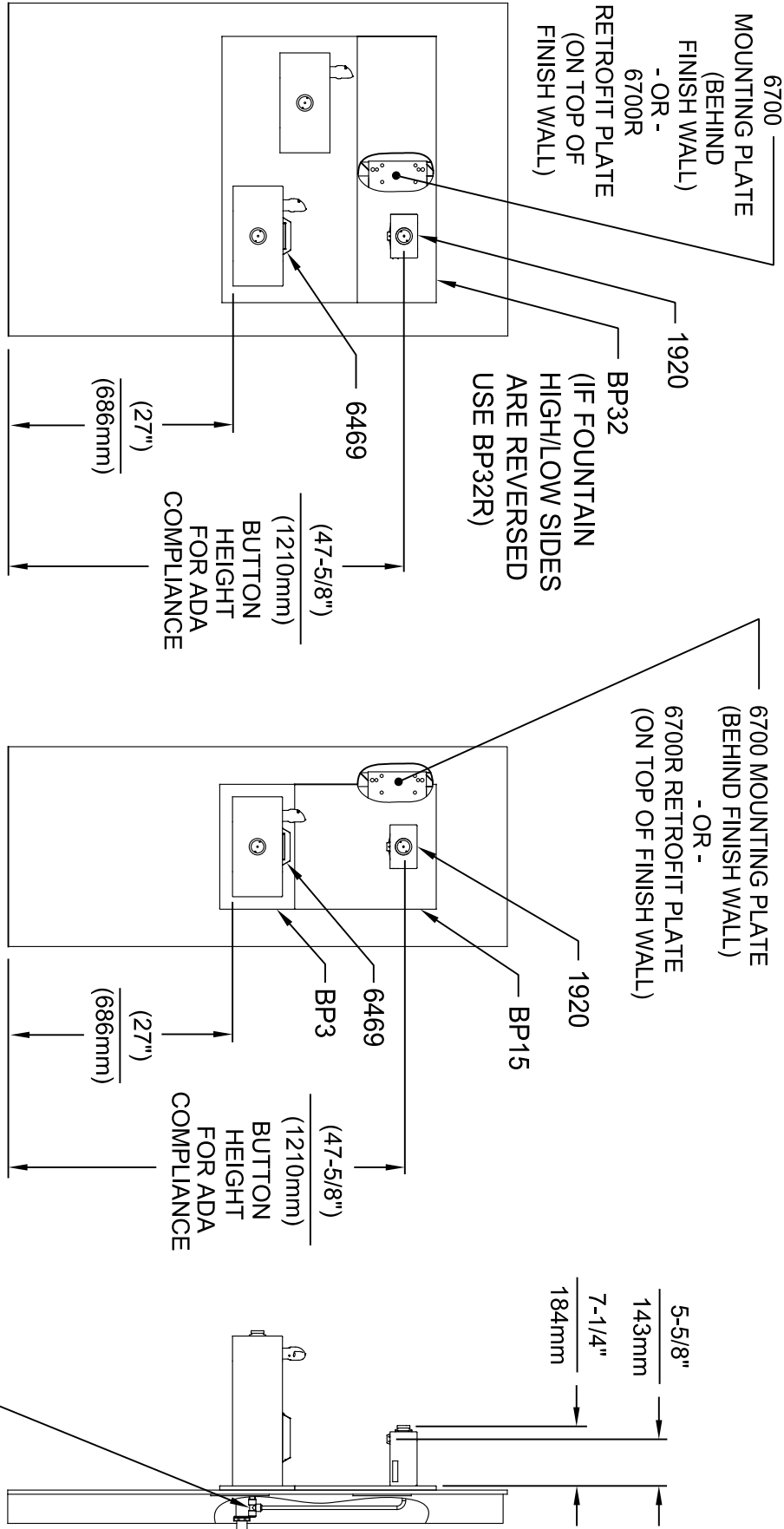


3/8" O.D. SUPPLY TUBING AND 3/8" O.D. PUSH-IN TEE SUPPLIED. (CONNECT TO FOUNTAIN SUPPLY LINE)



1455 KLEPPLE LANE
SPARKS, NEVADA 89431
(775) 359-4712 FAX (775) 359-1424
E-MAIL: HAWS@HAWS.CO.COM
WEBSITE: WWW.HAWS.CO.COM

EGN NO. REVISED PERBY:	MODEL(S)	1920/1920HPS/1920W
5081 EGN: 5972		
DRAWN: DATE: 01/30/17		
ML JC		
APPROVED: DATE: 04/19/24		
FV		
SCALE: N/A	DRAWING TYPE:	INSTALLATION
SIZE: A1	SHEET: 2 OF 8	
REVISION:		
12		

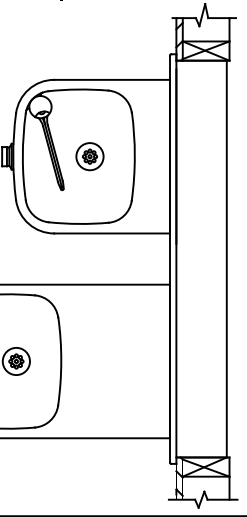



INSTALLATION ABOVE HAWS 1119 & H1119.8 SERIES

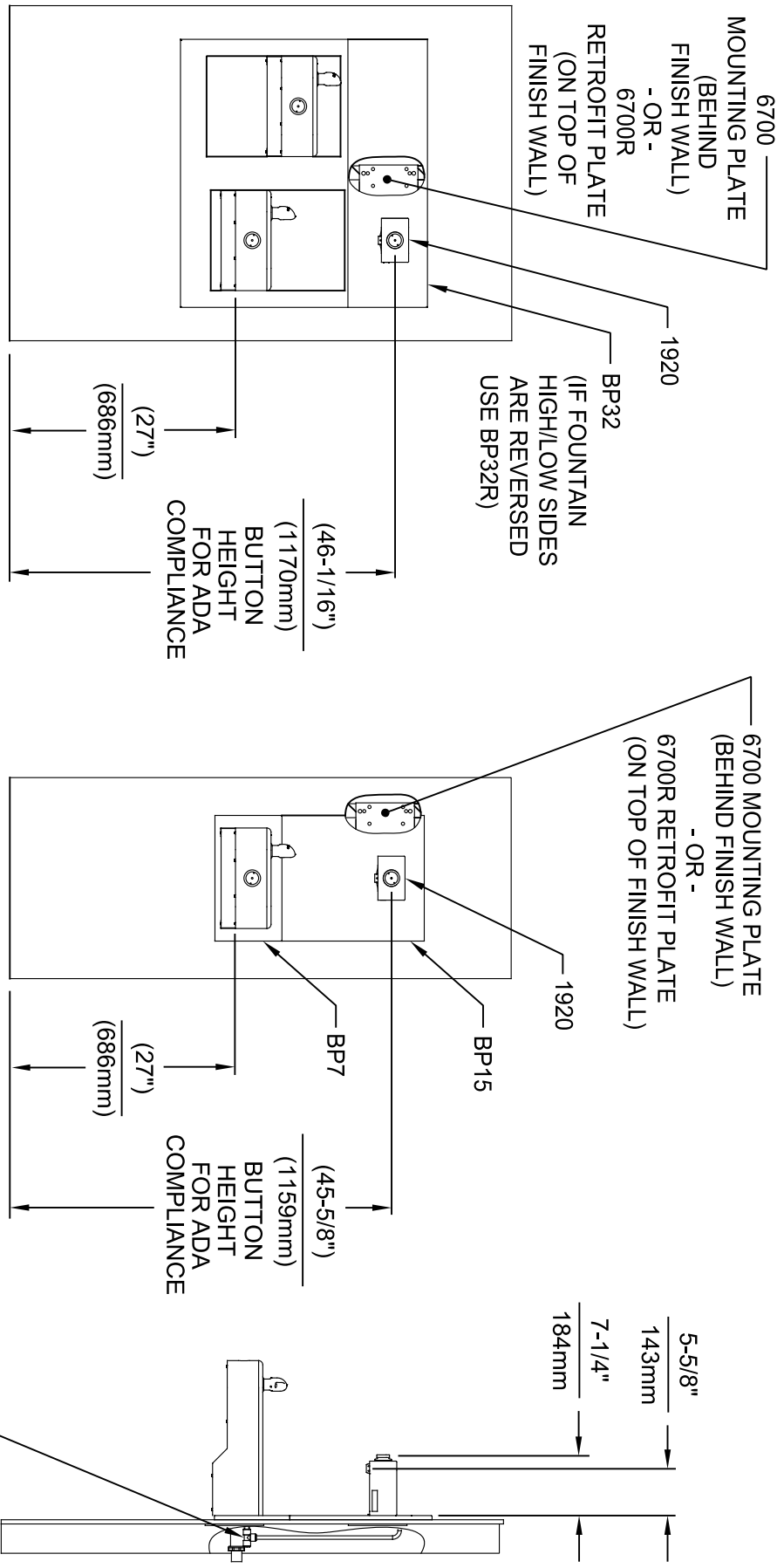
**INSTALLATION ABOVE HAWS 1109 & H1109.8 SERIES
SEE SHEET 8 FOR INSTALLATION AT CHILD HEIGHT**

* IF YOUR FOUNTAIN IS THIS STYLE USE THESE DIMENSIONS

1. SEE SEPARATE INSTALLATION DRAWINGS FOR MOUNTING PLATES AND BACK PANELS (SHOWN FOR REFERENCE - NOT SUPPLIED).
2. WHEN INSTALLING THIS UNIT, LOCAL, STATE OR FEDERAL CODES SHOULD BE ADHERED TO FOR INSTALLATION LOCATIONS, WASTE & SUPPLY REQUIREMENTS OTHER THAN SHOWN.



									
Since 1906									
1455 KLEPPER LANE SPARKS, NEVADA 89431 (775) 359-4712 FAX (775) 359-4724 E-MAIL: HAWS@HAWS.CO.COM WEBSITE: WWW.HAWS.CO.COM									
ECON. NO.		REVISED PERBY:		FV		MODEL(S)			
5081		ECON. 5972		DATE:		CHKD:		1920/1920HPS/1920W	
ML		01/30/17		DATE:		JC			
APPROVED:		FV		SCALE:		N/A		DRAWING TYPE:	
04/15/24								INSTALLATION	
								SIZE: A	
								SHEET 3 OF 8	
								12	
								REVISION	
								PART NUMBER	
								0510000490.D	

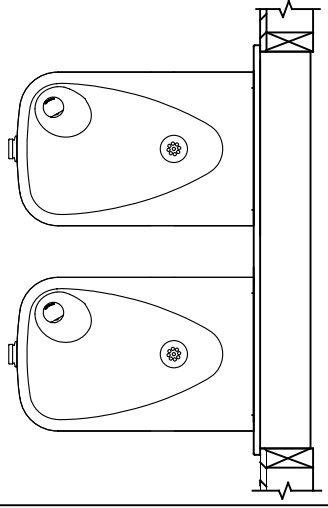


INSTALLATION ABOVE HAWS 1117L & H1117.8 SERIES

**INSTALLATION ABOVE HAWS 1107L & H1107.8 SERIES
SEE SHEET 8 FOR INSTALLATION AT CHILD HEIGHT**

* IF YOUR FOUNTAIN IS THIS STYLE USE THESE DIMENSIONS

1. SEE SEPARATE INSTALLATION DRAWINGS FOR MOUNTING PLATES AND BACK PANELS (SHOWN FOR REFERENCE - NOT SUPPLIED).
2. WHEN INSTALLING THIS UNIT, LOCAL, STATE OR FEDERAL CODES SHOULD BE ADHERED TO FOR INSTALLATION LOCATIONS, WASTE & SUPPLY REQUIREMENTS OTHER THAN SHOWN.



3/8" O.D. SUPPLY TUBING AND 3/8" O.D. PUSH-IN TEE SUPPLIED. (CONNECT TO FOUNTAIN SUPPLY LINE)



Haws®
Since 1906

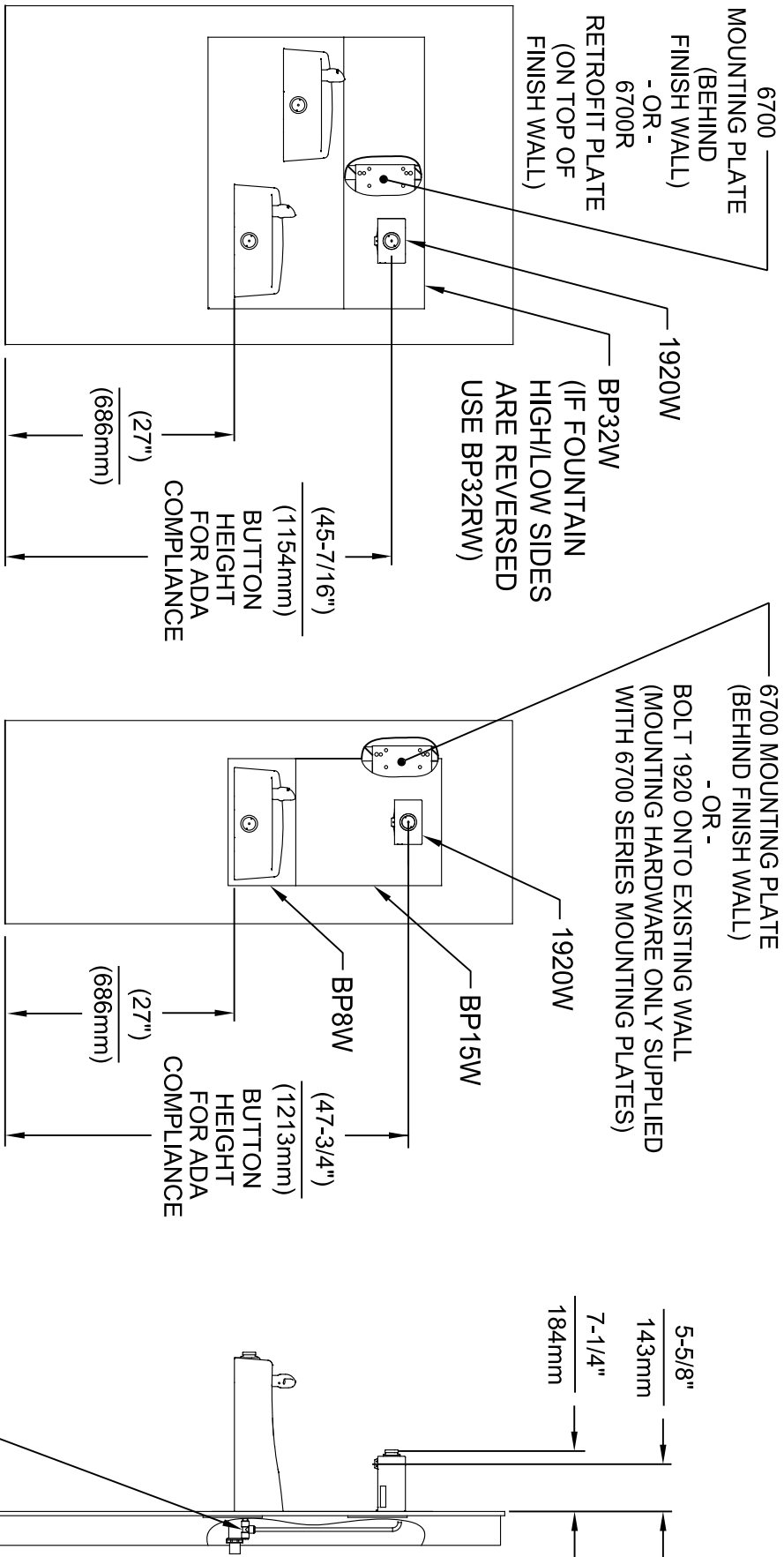
1455 KLEPPLE LANE
SPARKS, NE/VADA 89431
(775) 359-4712 FAX (775) 359-1424
E-MAIL: HAWS@HAWS.CO.COM
WEBSITE: WWW.HAWS.CO.COM

EGN NO. REVISED PERBY: MODEL(S)
5081 EGN: 5972 FV
DRAWN: DATE: CHKD: JC
ML 01/30/17

1920/1920HPS/1920W

PART NUMBER
0510000490.D
REVISION
12

APPROVED: DATE: SCALE: N/A DRAWING TYPE: INSTALLATION SIZE: A1 SHEET 4 OF 8



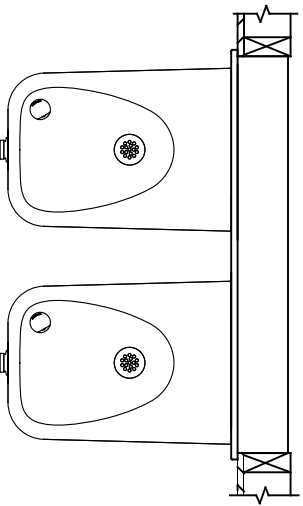
INSTALLATION ABOVE HAWS 1501

**INSTALLATION ABOVE HAWS 1311
SEE SHEET 8 FOR INSTALLATION AT CHILD HEIGHT**

* IF YOUR FOUNTAIN IS THIS STYLE USE THESE DIMENSIONS

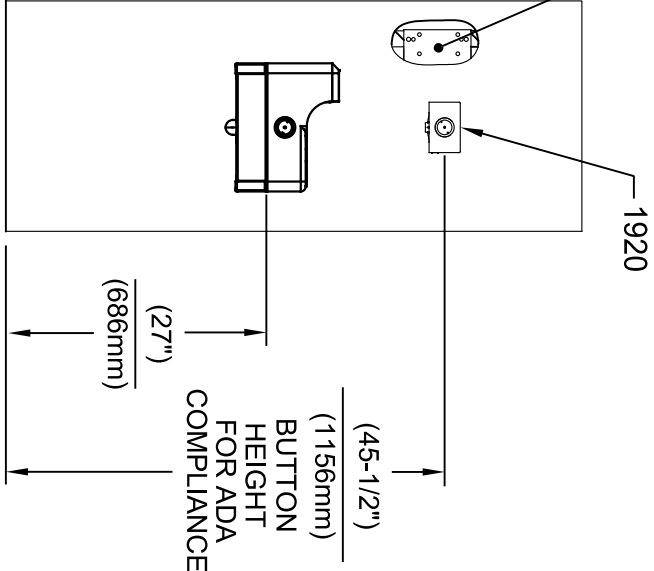
1. SEE SEPARATE INSTALLATION DRAWINGS FOR MOUNTING PLATES AND BACK PANELS (SHOWN FOR REFERENCE - NOT SUPPLIED).

2. WHEN INSTALLING THIS UNIT, LOCAL, STATE OR FEDERAL CODES SHOULD BE ADHERED TO FOR INSTALLATION LOCATIONS, WASTE & SUPPLY REQUIREMENTS OTHER THAN SHOWN.



ECON NO. REVISED PERBY: FV				MODEL(S)				1455 KLEPPLE LANE			
5081	ECON. 5972	DATE: 02/13/17	CHKD: JC	5081	ECON. 5972	DATE: 02/13/17	CHKD: JC	SPARKS, NE/VADA 89431	(775) 359-4712	FAX (775) 359-1424	E-MAIL: HAWS@HAWS.CO.COM
HAWS	HAWS	HAWS	HAWS	HAWS	HAWS	HAWS	HAWS	WEBSITE: WWW.HAWS.CO.COM	PART NUMBER	0510000490.D	REVISION
APPROVED: FV	DATE: 04/19/24	SCALE: N/A	DRAWING TYPE: INSTALLATION	SIZE: A1	SHEET: 5 OF 8	12					

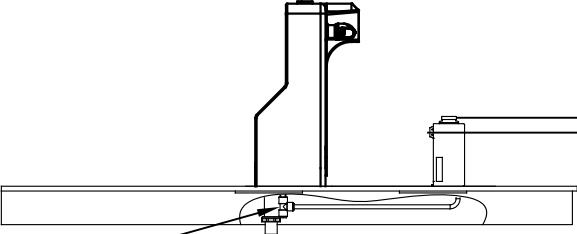
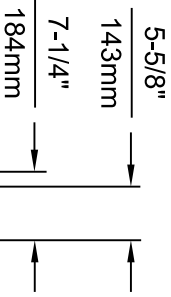
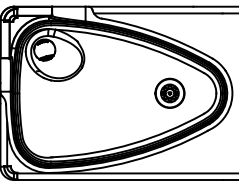
6700 MOUNTING PLATE
(BEHIND FINISH WALL)
- OR -
BOLT 1920 ONTO EXISTING WALL
(MOUNTING HARDWARE ONLY SUPPLIED
WITH 6700 SERIES MOUNTING PLATES)



INSTALLATION ABOVE HAWS 1047

* IF YOUR FOUNTAIN IS THIS STYLE USE
THESE DIMENSIONS

1. SEE SEPARATE INSTALLATION DRAWINGS
FOR MOUNTING PLATES AND BACK PANELS
(SHOWN FOR REFERENCE - NOT SUPPLIED).
2. WHEN INSTALLING THIS UNIT, LOCAL,
STATE OR FEDERAL CODES SHOULD
BE ADHERED TO FOR INSTALLATION
LOCATIONS, WASTE & SUPPLY
REQUIREMENTS OTHER THAN SHOWN.



3/8" O.D. SUPPLY
TUBING AND 3/8" O.D.
PUSH-IN TEE SUPPLIED.
(CONNECT TO FOUNTAIN
SUPPLY LINE)



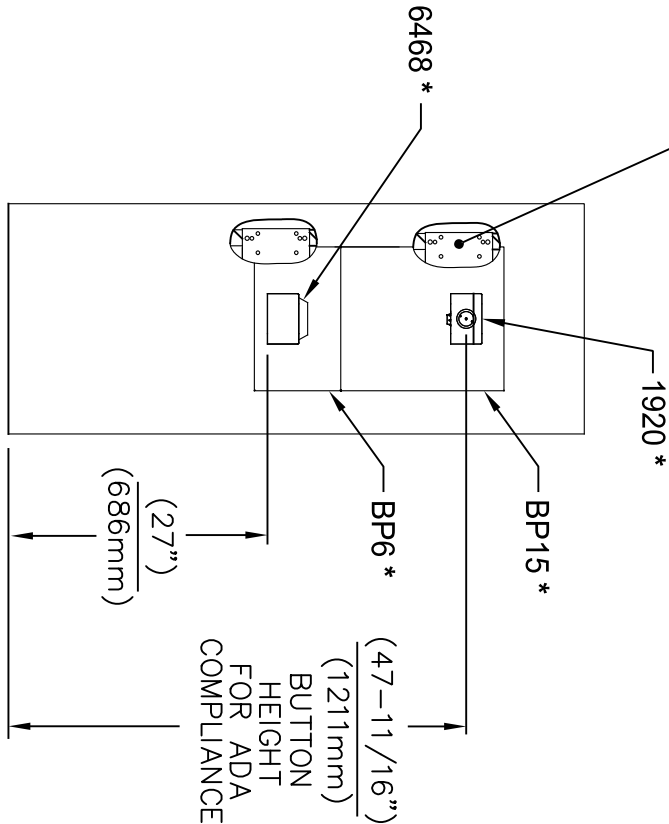
Haws
Since 1906

1455 KLEPPLE LANE
SPARKS, NEVADA 89431
(775) 359-4712 FAX (775) 359-7424
E-MAIL: HAWS@HAWS.CO.COM
WEBSITE: WWW.HAWS.CO.COM

ECON. REVISED PERBY:		MODEL(S)		INSTALLATION	
5220	ECON. 5972	FV	1920/1920HPS/1920W	SIZE: A1	SHEET 6 OF 8
DRAWN:	DATE:	CHKD:			
JP	09/14/17	JC			
APPROVED:	DATE:	SCALE:	DRAWING TYPE:		
FV	04/19/24	N/A			

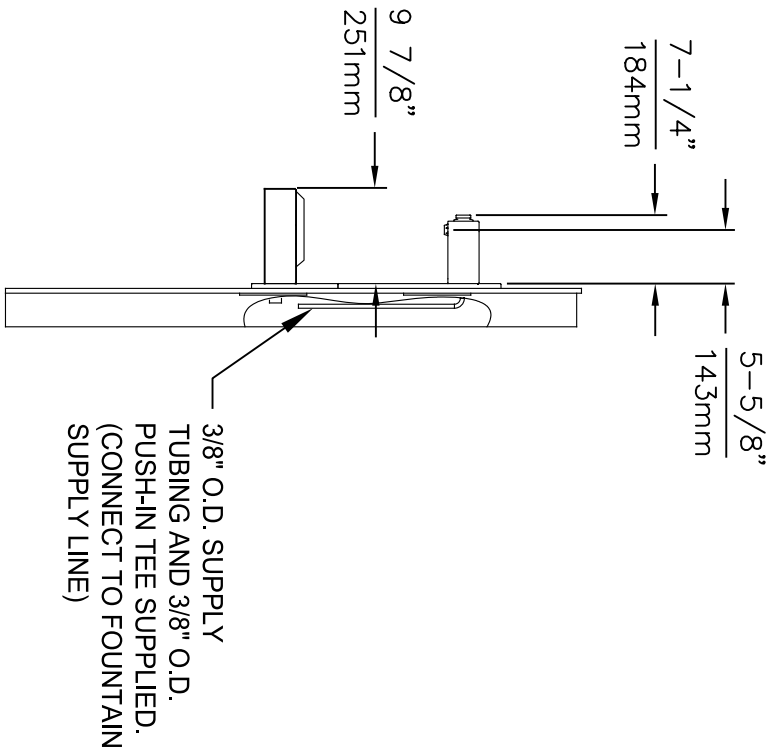
6700 MOUNTING PLATE
(BEHIND FINISH WALL)
- OR -
6700R RETROFIT PLATE
(ON TOP OF FINISH WALL)

* MODELS 1920 (BOTTLE FILLER),
BP15, BP6 (BACK PANELS) AND
6468 (WASTE DRIP TRAY) ARE
ALL AVAILABLE TOGETHER AS
MODEL 1922.



INSTALLATION ABOVE 6468

1. SEE SEPARATE INSTALLATION DRAWINGS FOR MOUNTING PLATE, WASTE DRIP TRAY AND BACK PANELS (SHOWN FOR REFERENCE - NOT SUPPLIED).
2. WHEN INSTALLING THIS UNIT, LOCAL, STATE OR FEDERAL CODES SHOULD BE ADHERED TO FOR INSTALLATION LOCATIONS, WASTE & SUPPLY REQUIREMENTS OTHER THAN SHOWN.



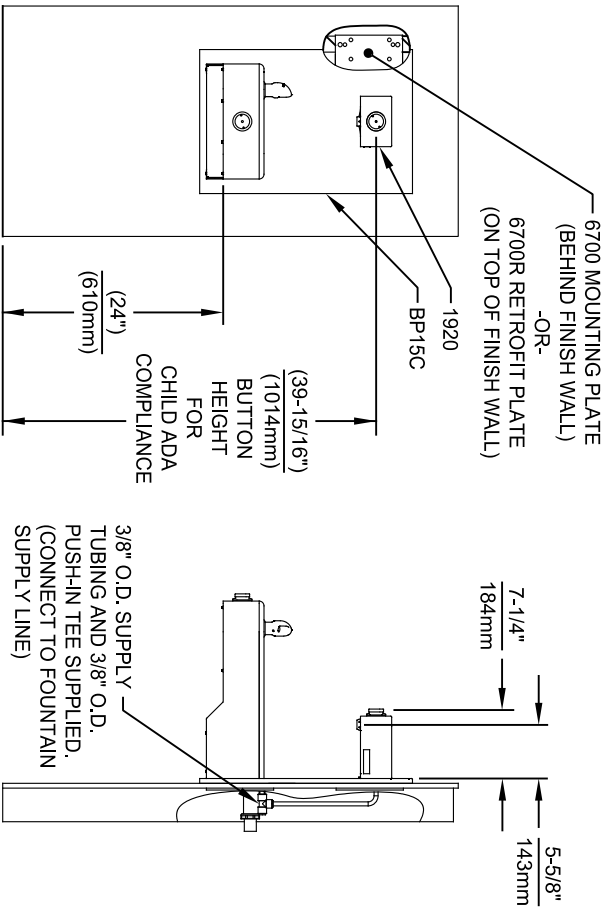
3/8" O.D. SUPPLY
TUBING AND 3/8" O.D.
PUSH-IN TEE SUPPLIED.
(CONNECT TO FOUNTAIN
SUPPLY LINE)



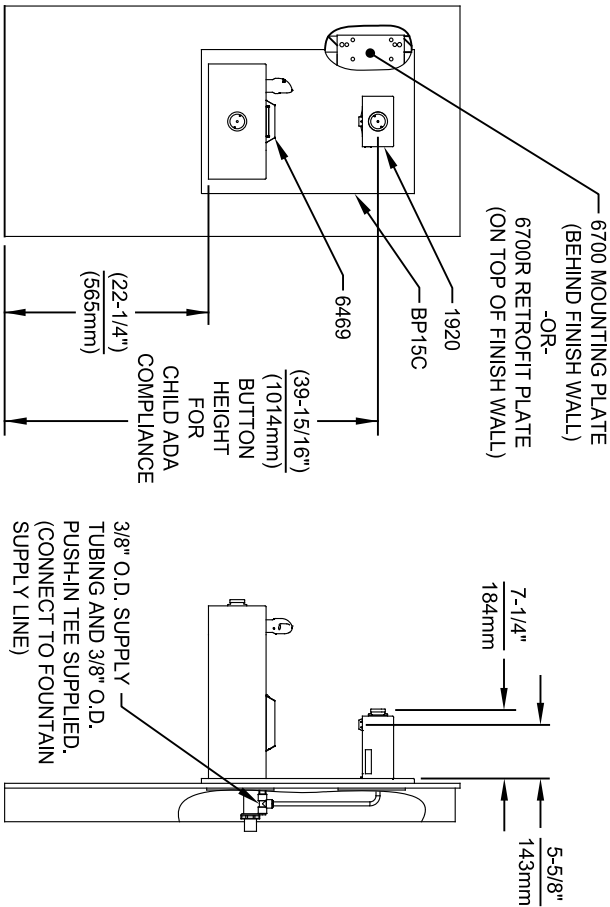
Haws
Since 1906

1455 KLEPPLE LANE
SPARKS, NEVADA 89431
(775) 359-4712 FAX (775) 359-424
E-MAIL: HAWS@HAWSCO.COM
WEBSITE: WWW.HAWSCO.COM

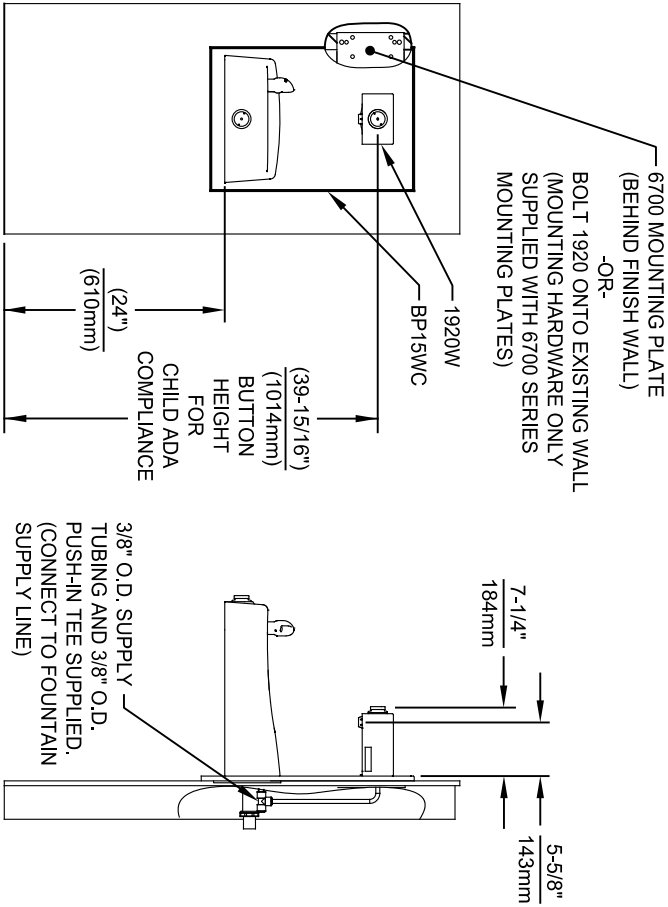
ECON. NO. REVISED PER BY:		MODEL(S)	
9807	ECON. 9972	FV	
DRAWN:	DATE:	CHKD:	
DP	10/27/20	JC	
APPROVED:	DATE:	SCALE:	N/A
FV	04/19/24	DRAWING TYPE:	INSTALLATION
		SIZE:	A1
		SHEET:	7 OF 8
		PART NUMBER:	0510000490.D
		REVISION:	12



INSTALLATION ABOVE HAWS 1107L & H1107.8 SERIES



INSTALLATION ABOVE HAWS 1109, 1109.14 & H1109.8 SERIES



INSTALLATION ABOVE HAWS 1311

- NOTES:
- HEIGHT DIMENSIONS SHOWN ARE FOR CHILD ADA APPLICATIONS:
 - BOTTLE FILLER HEIGHT AT 40" MAX.
 - DRINKING FOUNTAIN BUBBLER HEIGHT AT 30" MAX.
 - (SEE SHEETS 3, 4 & 5 FOR ADULT ADA HEIGHT DIMENSIONS)
 - SEE SEPARATE INSTALLATION DRAWINGS FOR MOUNTING PLATES AND BACK PANELS (SHOWN FOR REFERENCE - NOT SUPPLIED).
 - WHEN INSTALLING THIS UNIT, LOCAL, STATE OR FEDERAL CODES SHOULD BE ADHERED TO FOR INSTALLATION LOCATIONS, WASTE & SUPPLY REQUIREMENTS OTHER THAN SHOWN.



Haws®
Since 1906

1455 KLEPPLE LANE
SPARKS, NEVADA 89431
(775) 359-4712 FAX (775) 359-1424
E-MAIL: HAWS@HAWS.CO.COM
WEBSITE: WWW.HAWS.CO.COM

ECON. REVISED PERBY:		MODEL(S)	
9807	ECON. 9972	1920/1920HPS/1920W	
DRAWN:	DATE:	CHKD:	
FV	01/26/24	JC	
APPROVED:	DATE:	SCALE:	DRAWING TYPE:
FV	04/19/24	N/A	INSTALLATION
SIZE: A1		SHEET 8 OF 8	
PART NUMBER		REVISION	
0510000490.D		12	