



## INSTALLATION, OPERATION & MAINTENANCE INSTRUCTIONS

1455 Kleppe Lane ♦ Sparks, NV 89431-6467 ♦ (775) 359-4712 ♦ Fax (775) 359-7424  
E-mail: [haws@hawsco.com](mailto:haws@hawsco.com) ♦ website: [www.hawsco.com](http://www.hawsco.com)

No. 0580001180 (6)

### MODELS 3612 & 3612F

### Outdoor Bottle Filler/Dual Drinking Fountain

**NOTE TO INSTALLER:** Please leave this information with the Maintenance Department.

#### LIMITED WARRANTY

HAWS warrants that all of its products are guaranteed against defective material or poor workmanship for a period of **one year from the date of shipment**. The foregoing notwithstanding, HAWS warrants certain specific products or components thereof for an adjusted period. A list of these excepted products and components and a description of their respective warranty terms may be found here: [www.hawsco.com/warranty](http://www.hawsco.com/warranty). HAWS' liability under this warranty shall be discharged by furnishing without charge F.O.B. HAWS factory any goods, or part thereof, which shall appear to the Company upon inspection to be of defective material or not of first-class workmanship, provided that a claim is made in writing to Company within a reasonable period after receipt of the product. Where claims for defects are made, the defective part or parts shall be delivered to the Company, prepaid, for inspection. HAWS shall not be liable for the cost of repairs, alterations or replacements, or the labor required to implement them, or for any expense connected therewith made by the owner or owner's agents, except upon written authority from HAWS. HAWS shall not be liable for any damages caused by defective materials or poor workmanship, except for replacements, as provided above. Buyer agrees that HAWS has made no other warranties either express or implied in addition to those above stated, except that of title with respect to any of the products or equipment sold hereunder and that HAWS shall not be liable for general, special, incidental, or consequential damages claimed to arise under the contract of sale.

Equipment manufactured by HAWS is warranted to function if installation and maintenance instructions provided are adhered to. The units also must be used for the purpose for which they were intended. Any HAWS emergency equipment is intended to supplement first-aid treatment. Due to widely varying conditions, HAWS cannot guarantee that the use of this emergency equipment will prevent serious injury or the aggravation of existing or prior injuries.

**EXCEPT AS EXPRESSLY STATED HEREIN, HAWS HEREBY DISCLAIMS ALL WARRANTIES, WHETHER EXPRESS OR IMPLIED, ARISING BY LAW OR OTHERWISE, INCLUDING WITHOUT LIMITATION, ANY IMPLIED WARRANTIES OF MERCHANTABILITY AND FITNESS FOR A PARTICULAR PURPOSE. THIS WARRANTY MAY NOT BE MODIFIED OR EXTENDED WITHOUT THE WRITTEN CONSENT OF HAWS. REMEDIES AND REPLACEMENTS STATED HEREIN ARE EXCLUSIVE. IN NO EVENT SHALL HAWS BE LIABLE FOR ANY SPECIAL, PUNITIVE, CONSEQUENTIAL OR INCIDENTAL DAMAGES TO ANY PERSON INCLUDING BUT NOT LIMITED TO DAMAGES FOR LOSS OF USE OR PROFITS, SUBSTITUTE PRODUCTS OR COSTS, PROPERTY DAMAGE, OR OTHER MONETARY LOSS.**

**SHOULD YOU EXPERIENCE DIFFICULTY WITH THE INSTALLATION OF THIS MODEL PLEASE CALL:**

**TECHNICAL SUPPORT: 1-800-766-5612**  
**FOR CUSTOMER SERVICE: 1-888-640-4297**

**RECOMMENDED TOOLS:**

- Measuring Tape
- PVC Pipe Cutter
- Plastic Tubing Cutter
- PVC Solvent Weld Glue
- ¼" Bit-Holding Screwdriver
- Level
- 10" Pipe Wrench
- Adjustable Plier
- 1/8 and 5/32 Tamper Resistant Hex Bits (Supplied)
- 9/16" and 5/8" Box/Open Combination Wrenches, 8" Max Length
- 3/8" Socket Wrench/Ratchet, 8" Max Length
- 9/16" Deep Socket
- 15/16" Socket

**LOCATION OF UNIT:** The Model 3612/3612F (with Filter) Bottle Filler and Dual Fountain can be installed and assembled to be ADA accessible by first locating the pedestal base on a hardscape with dimensions that comply with your local, state, and federal codes regarding clear floor space and pedestrian protection area. Refer to the last page of this document for more information. When the right pedestal arm is installed in the high orientation, the height dimensions shown on the model specification sheet meet current Federal Americans with Disabilities Act (ADA) wheelchair requirements. When the left pedestal arm is installed in the highest position, the height dimensions shown on the model specification sheet meet current ADA standing height requirements. The bottle filler meets ADA requirements for either a front approach or a side approach. When installing this unit, local, state and federal (including ADA) codes must be adhered to. If height other than shown is required, then dimensions must be adjusted accordingly.

**ATTENTION:** For model 3612F (model with 3000-gallon capacity Filter), the Operating Temperature Range for the 6477 Filter Kit Assembly (Required - supplied separately) is 40° F - 100° F (4.4° C – 37.8° C).

**SUPPLY LINE: Model 3612** – The minimum recommended line size is 1/2"IPS with 30-90 psi (2-6 ATM) flowing pressure. Where sediment or mineral content is a problem, an inlet filter is recommended. **Model 3612F (with 3000-gallon capacity Filter)** – The minimum recommended line size is 1/2"IPS with 40-90 psi (2.76-6 ATM) flowing pressure.

**PLUMBING CONNECTIONS: Model 3612** – Water supply inlet connection is a 3/8"O.D. compression fitting. Waste outlet is 1-1/2" PVC pipe. **Model 3612F** – Water supply inlet and outlet connection (for Filter) is a 3/8"O.D. push-in type fitting. Waste outlet is 1-1/2" PVC pipe. Plumbing connections will vary depending on how each model is configured during assembly. Please consult the installation drawings below for supply and waste fitting arrangements and assembly for your specific model.

**MAINTENANCE: Models 3612 & 3612F** Periodically clean the pushbutton valve strainer. Refer to 5874 Series Valve Operation and Maintenance Manual for more information. **Model 3612F** – Filter replacement to occur at 1 year maximum or 3,000 gallons maximum, whichever comes first. Replace filter (3000-gallon capacity) per Filter Replacement instructions listed on model 6477 Operation & Maintenance Manual.

## **INSTALLATION PROCEDURE**

**GENERAL NOTES:**

1. For all compression fitting connections, only connect NSF-61 copper or plastic 3/8" outside diameter tubing. The following assembly instructions must be followed to ensure a watertight connection:

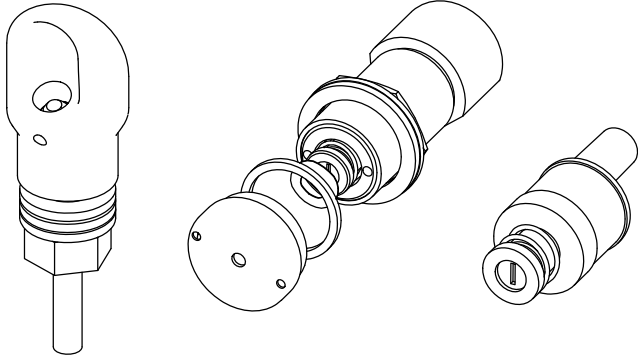
- a. Cut tubing square and clean. Deburr if necessary.
- b. Place compression nut and ferrule over end of tubing.
- c. For plastic tubing (must be 1/4" inside diameter), insert supplied tubing insert into end of tubing.
- d. Push tube into the fitting until it bottoms out.
- e. Thread nut onto fitting and tighten snugly with 5/8" wrenches.

Tube Sizes	O.D. Tolerance	Insertion Depth
3/8"	±.005"	3/4"

TROUBLESHOOTING	
PROBLEM	REPAIR CHECKLIST
1. Insufficient bubbler flow (From Drinking Fountain)	<ol style="list-style-type: none"> <li>1a. For 3612 – Verify minimum 30 psi flowing supply pressure. For 3611F – Verify minimum 40 psi flowing supply pressure</li> <li>b. Check that inlet screwdriver stop valve is wide open. Clean inlet strainer or adjust valve to increase flow. See 5874 Series Valve Manual*.</li> <li>c. For 3612F (Only) – Check water filter. Replace at 1 year or 3,000 gallons (max.), whichever comes first.</li> </ol>
2. Insufficient bottle filler flow	<ol style="list-style-type: none"> <li>2a. For 3612 – Verify minimum 30 psi flowing supply pressure. For 3612F – Verify minimum 40 psi flowing supply pressure.</li> <li>b. Nozzle strainer is clogged. Use nozzle removal tool to remove strainer and replace. Replacement strainers may be ordered by calling Customer Service.</li> <li>c. Check that inlet screwdriver stop valve is wide open. Clean inlet strainer or adjust valve to increase flow. See 5874 Series Valve Manual*.</li> <li>d. For 3612F (Only) – Check water filter. Replace at 1 year or 3,000 gallons (max.), whichever comes first.</li> </ol>

\*For more information about Haws products, see our website: [www.hawscs.com](http://www.hawscs.com)

## REPLACEMENT PARTS DRINKING FOUNTAIN

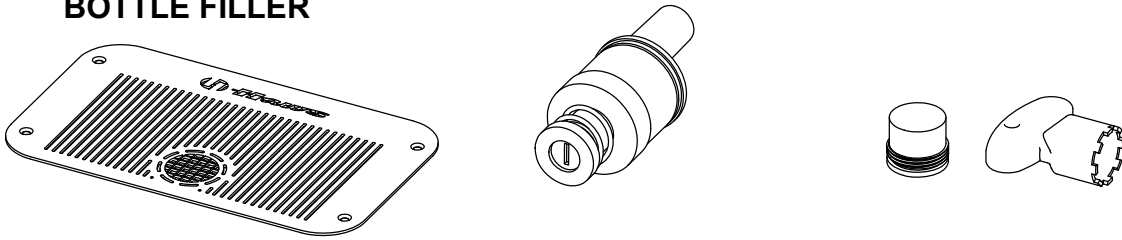


**MODEL 5703M  
BUBBLER HEAD**

**MODEL 5874PB  
PUSHBUTTON**

**MODEL VRK5874  
VALVE REPAIR KIT**

## REPLACEMENT PARTS BOTTLE FILLER

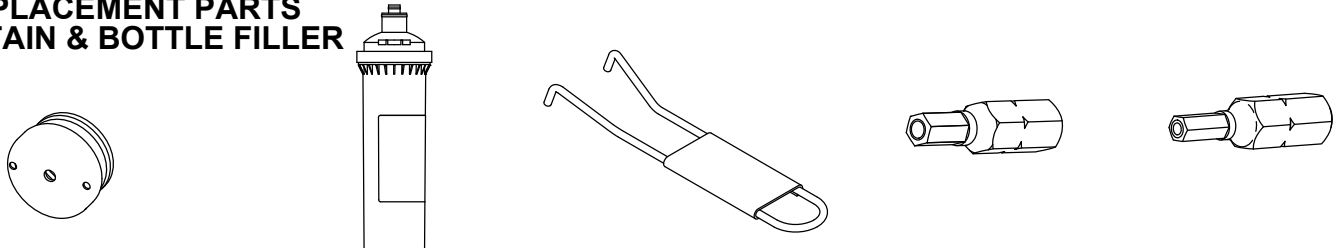


**0410000564  
BOTTLE FILLER DRAIN  
COVER PLATE**

**MODEL VRK5874HF  
VALVE REPAIR KIT,  
HIGH FLOW**

**MODEL VRKNOZ1  
QTY 10 AERATORS  
AND INSTALL TOOL**

## REPLACEMENT PARTS FOUNTAIN & BOTTLE FILLER



**MODEL PBA7  
BUTTON ASSEMBLY**

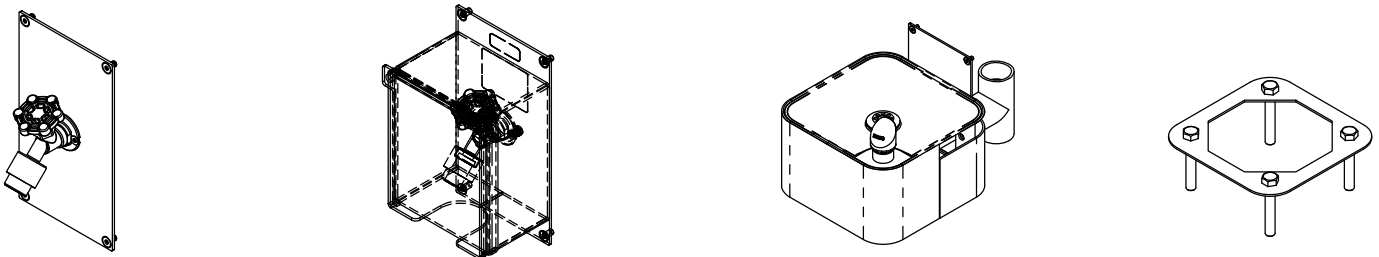
**MODEL 6428  
FILTER CARTRIDGE  
(FOR 36XXF SERIES  
MODELS)**

**0006983506  
SPANNER WRENCH**

**0510001030  
HEX BIT,  
PINNED, 5/32"**

**0510001029  
HEX BIT,  
PINNED, 1/8"**

## OPTIONAL ACCESSORIES



**MODEL 3661 HOSE BIB  
(NOT FREEZE RESISTANT)**

**MODEL 3660 LOCKABLE HOSE BIB  
(NOT FREEZE RESISTANT)**

**MODEL 3670 DOG BOWL  
(NOT FREEZE RESISTANT)**

**MODEL MTG.3600  
INSTALLATION AID**

## MODULAR OUTDOOR FOUNTAIN SYSTEM PARTS BREAKDOWN

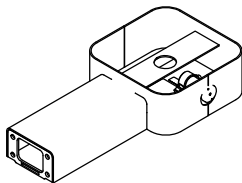
WHEN ORDERING PARTS, PLEASE  
SPECIFY PART NUMBER



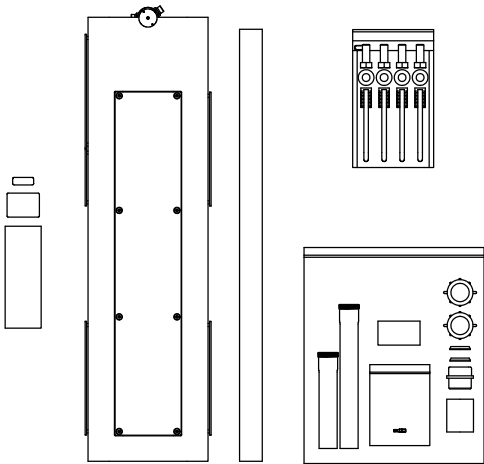
1455 KLEPPE LANE  
SPARKS, NEVADA 89431  
(775) 359-4712 FAX (775) 359-7424  
E-MAIL: HAWS@HAWS.CO.COM  
WEBSITE: WWW.HAWS.CO.COM

ECN: 5666	REV. ECN: 6030	BY: FV	MODEL(S)  3612 & 3612F	PART NUMBER 0580001180
DRAWN: DHP	DATE: 6/11/20	CHKD: JL		REVISION 6
APPROVED: FV	DATE: 07/02/24	SCALE: 1:2	DRAWING TYPE: PARTS BREAKDOWN	SIZE: A
				SHEET 1 OF 2

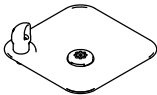
AVAILABLE SUB COMPONENT MODELS



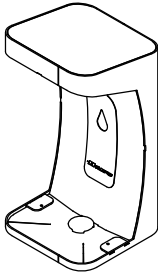
MODEL 3671 PEDESTAL ARM ASSEMBLY



MODEL 3674 PEDESTAL ASSEMBLY



MODEL 3680 FOUNTAIN ASSEMBLY




MODEL 3690 BOTTLE FILLER ASSEMBLY

3612 & 3612F  
MODULAR OUTDOOR  
FOUNTAIN SYSTEM

PARTS BREAKDOWN

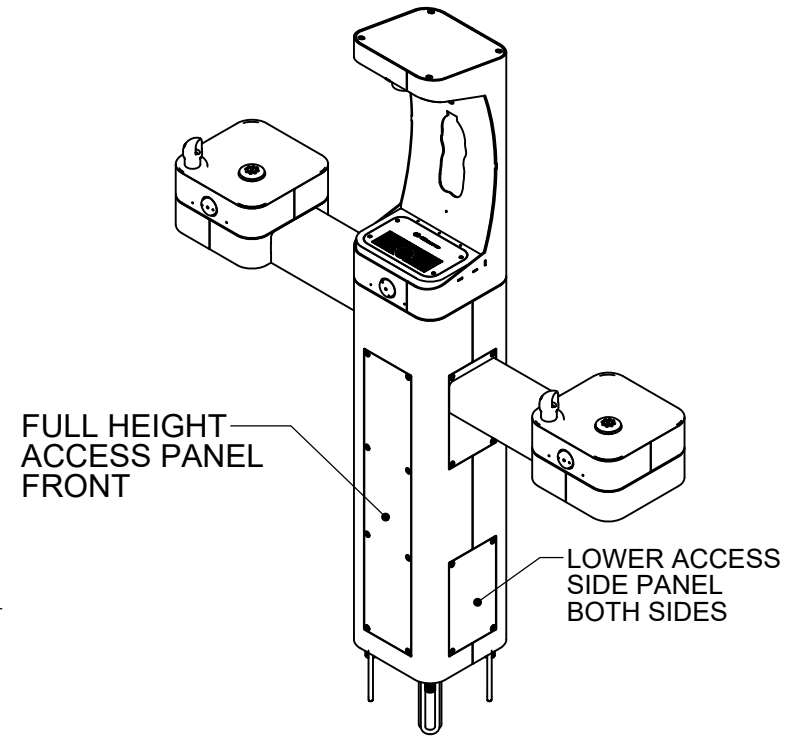
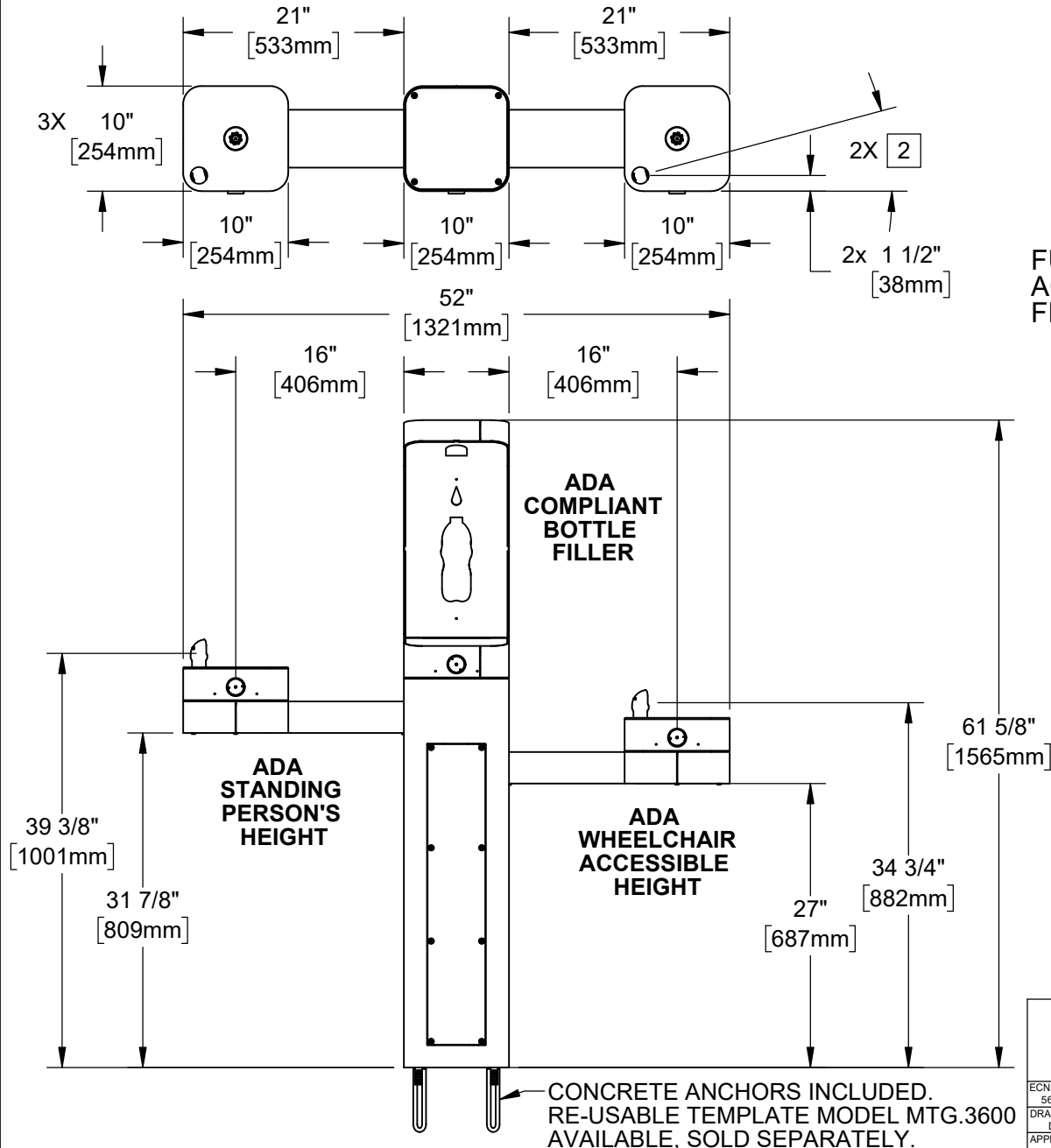
WHEN ORDERING PARTS, PLEASE  
SPECIFY PART NUMBER

			1455 KLEPPE LANE SPARKS, NEVADA 89431 (775) 359-4712 FAX (775) 359-7424 E-MAIL: HAWS@HAWSO.COM WEBSITE: WWW.HAWSO.COM		
ECN: 5666	REV. ECN: 6030	BY: FV	MODEL(S)  3612 & 3612F		PART NUMBER 0580001180
DRAWN: DHP	DATE: 6/11/20	CHKD: JL			REVISION 6
APPROVED: FV	DATE: 07/02/24	SCALE: 1:16	DRAWING TYPE: PARTS BREAKDOWN	SIZE: A	SHEET 2 OF 2

NOTES:

1. WHEN INSTALLING THIS UNIT, LOCAL, STATE, OR FEDERAL CODES SHOULD BE ADHERED TO. INSTALL A TRAP IN THE WASTE LINE AND A SCREWDRIVER STOP IN THE SUPPLY LINE IF REQUIRED.

2. MAXIMUM ADJUSTABLE RANGE IS 15° FROM PARALLEL TO BACK OF WALL.



**HAWS MODEL 3612/3612F IS FULLY COMPLIANT WITH THE FEDERAL 2010 AMERICANS WITH DISABILITIES ACT (ADA) ACCESSIBILITY REQUIREMENTS WHEN INSTALLED AS SHOWN HERE AND WHEN INSTALLED WITH PROPER CLEARANCES AND ACCESS. IT IS THE RESPONSIBILITY OF THE INSTALLER TO ADHERE TO LOCAL, STATE, AND FEDERAL CODES WHEN INSTALLING THIS UNIT. DISTANCE TO SURROUNDING OBJECTS, APPROACH SURFACES, ETC. SHOULD BE CONSIDERED. REFER TO SHEET 9 FOR MORE INFORMATION.**

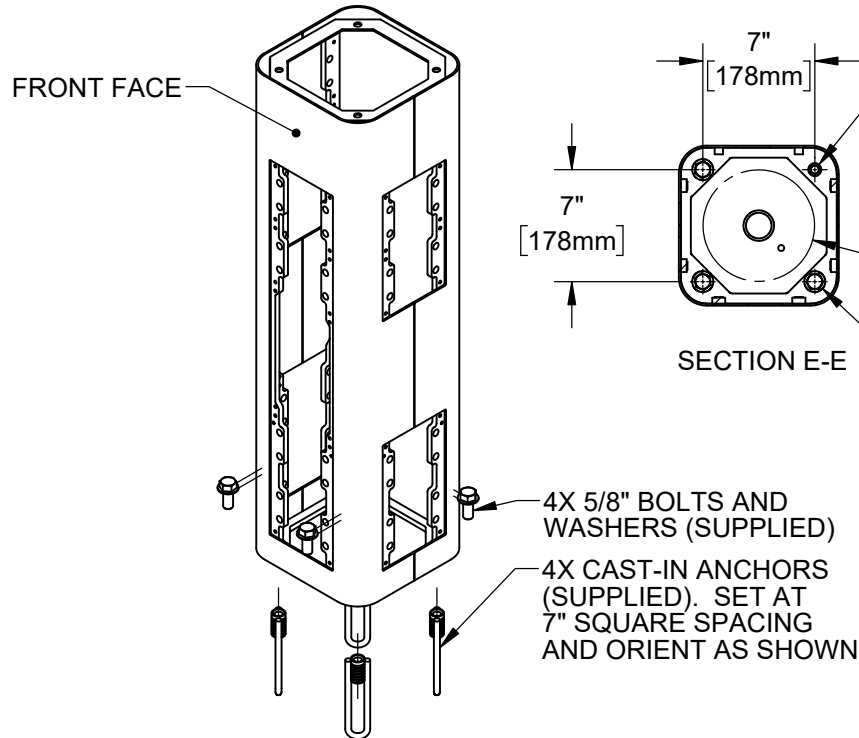
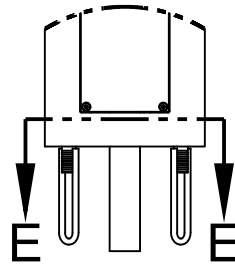
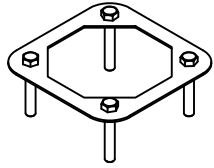


1455 KLEPPE LANE  
SPARKS, NEVADA 89431  
(775) 359-4712 FAX (775) 359-7424  
E-MAIL: HAWS@HAWSO.COM  
WEBSITE: WWW.HAWSO.COM

ECN: 5666	REV. ECN: 6030	BY: FV	MODEL(S): 3612 & 3612F	PART NUMBER: 0580001180.D
DRAWN: DHP	DATE: 6/11/20	CHKD: JL		REVISION: 6
APPROVED: FV	DATE: 07/02/24	SCALE: 1:24	DRAWING TYPE: INSTALLATION	SHEET 1 OF 9

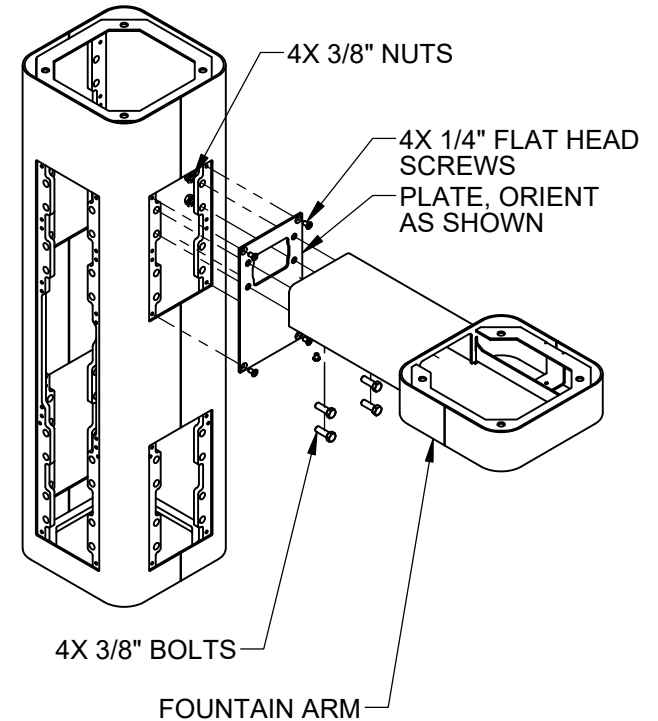
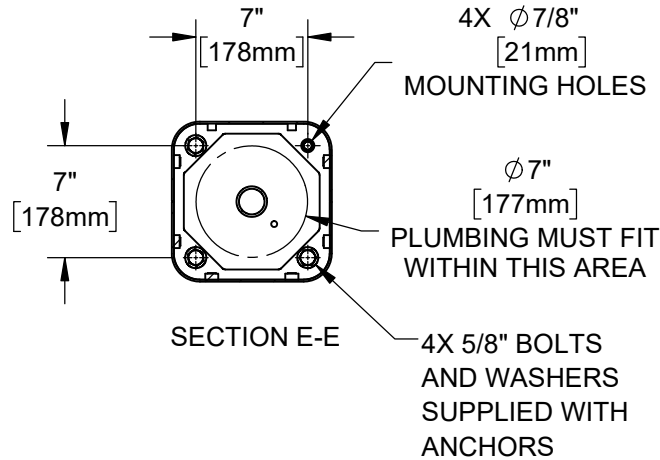
# INSTALLATION INSTRUCTIONS

## MODEL MTG.3600 (OPTIONAL) TEMPLATE FOR SPACING ANCHORS DURING CONCRETE POUR



### STEP 1

MOUNT PEDESTAL TO CONCRETE SLAB IN DESIRED ORIENTATION. SLAB TO BE 30" MINIMUM SQUARE AND 6" MINIMUM THICK (BY OTHERS). PLUMBING CAST IN CONCRETE MUST FIT IN 7" DIAMETER AREA CENTERED UNDER PEDESTAL LOCATION.



### STEP 2

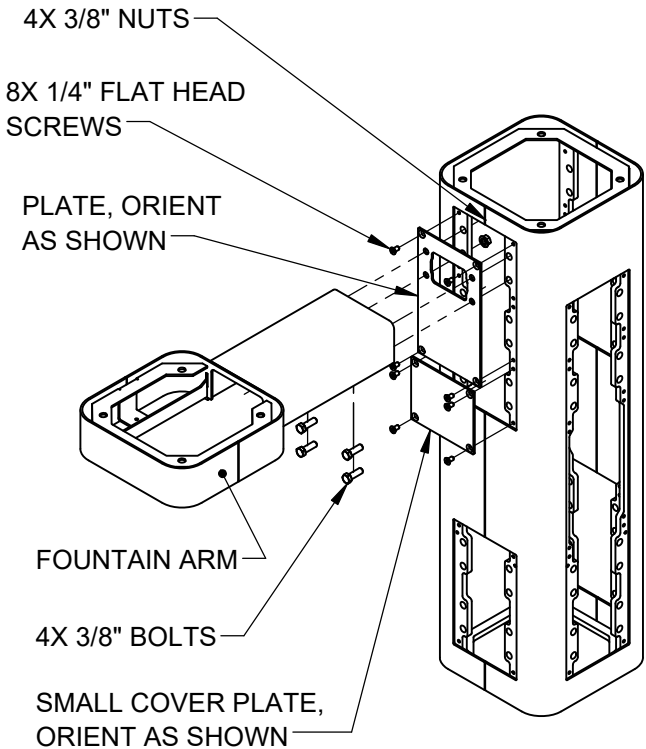
REMOVE BOTTOM COVER PLATES FROM ARMS BY REMOVING 3 1/4" BUTTON HEAD SCREWS. INSTALL ONE FOUNTAIN ARM ON RIGHT SIDE AS SHOWN. USE 1/4" FLAT HEAD SCREWS (SUPPLIED) TO INSTALL PLATE. USE 3/8" BOLTS AND NUTS (SUPPLIED) AND TORQUE TO 18 FT-LBS TO INSTALL ARM.



1455 KLEPPE LANE  
SPARKS, NEVADA 89431  
(775) 359-4712 FAX (775) 359-7424  
E-MAIL: HAWS@HAWS.CO.COM  
WEBSITE: WWW.HAWS.CO.COM

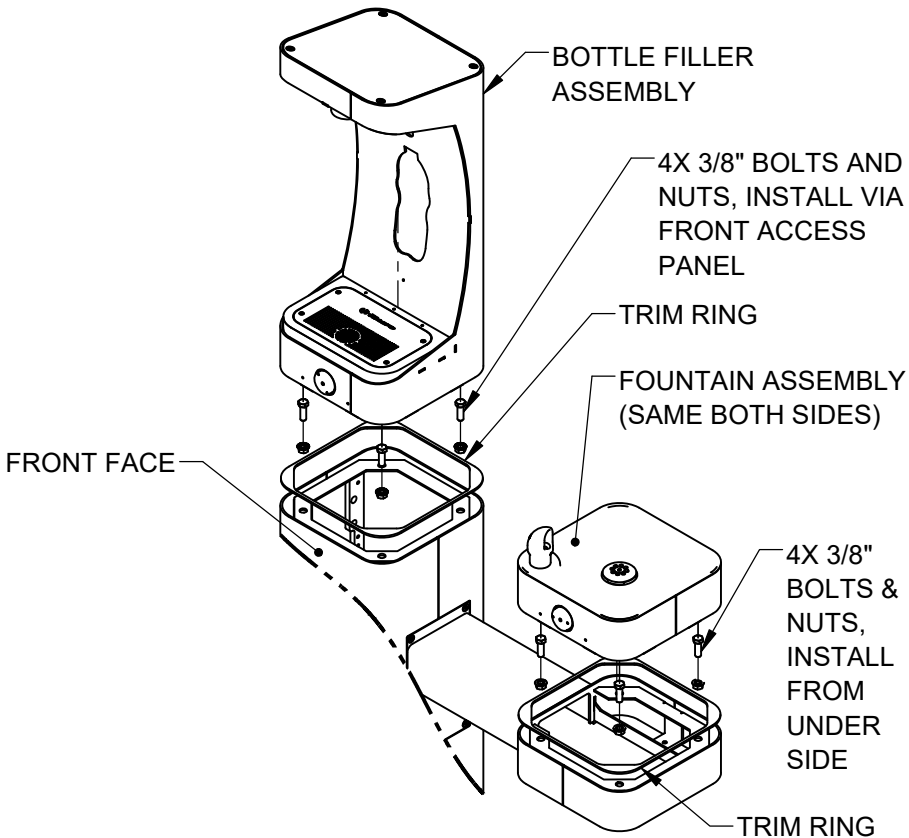
ECN: 5666	REV. ECN: 6030	BY: FV	MODEL(S) 3612 & 3612F	PART NUMBER 0580001180.D
DRAWN: DHP	DATE: 8/11/20	CHKD: JL		REVISION 6
APPROVED: FV	DATE: 07/02/24	SCALE: 1:24	DRAWING TYPE: INSTALLATION	SHEET 2 OF 9

# INSTALLATION INSTRUCTIONS



## STEP 3

INSTALL REMAINING ARM ON LEFT SIDE AS SHOWN. USE 1/4" FLAT HEAD SCREWS (SUPPLIED) TO INSTALL PLATES. USE 3/8" BOLTS AND NUTS (SUPPLIED) AND TORQUE TO 18 FT-LBS TO INSTALL ARM.



## STEP 4

PLACE SQUARE TRIM RING ON BOTTOM OF BOTTLE FILLER AND PLACE BOTTLE FILLER ON TOP OF PEDESTAL, FACING THE FRONT. USE 3/8" BOLTS AND NUTS VIA THE FRONT ACCESS PANEL TO SECURE BOTTLE FILLER TO PEDESTAL. PLACE TRIM RING AND INSTALL FOUNTAINS ON ARMS AS SHOWN. CAREFULLY CENTER BOTTLE FILLER, FOUNTAIN, AND TRIM RINGS, THEN TORQUE BOLTS/NUTS TO 18 FT-LBS

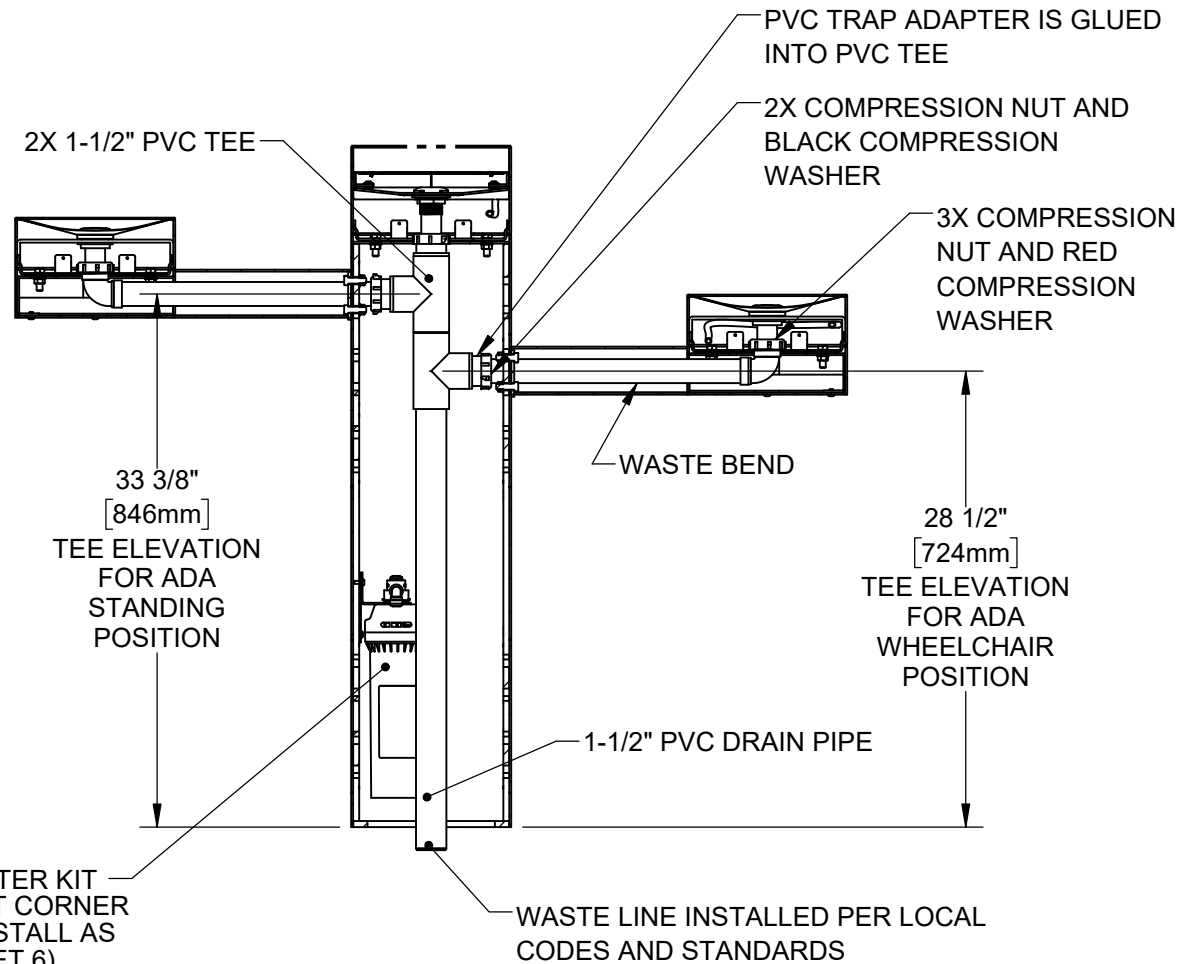


1455 KLEPPE LANE  
SPARKS, NEVADA 89431  
(775) 359-4712 FAX (775) 359-7424  
E-MAIL: HAWS@HAWS.CO.COM  
WEBSITE: WWW.HAWS.CO.COM

ECN: 5666	REV. ECN: 6030	BY: FV	MODEL(S) 3612 & 3612F	PART NUMBER 0580001180.D
DRAWN: DHP	DATE: 6/11/20	CHKD: JL		REVISION 6
APPROVED: FV	DATE: 07/02/24	SCALE: 1:24	DRAWING TYPE: INSTALLATION	SHEET 3 OF 9



# INSTALLATION INSTRUCTIONS




MODEL 6477 WATER FILTER KIT LOCATION IN BACK LEFT CORNER BEHIND DRAIN PIPE. INSTALL AS SHOWN IN STEP 7 (SHEET 6). FOR NEW INSTALLATIONS WITH MODEL 3612F, INSTALLING THE FILTER PRIOR TO INSTALLING THE DRAIN PIPE WILL IMPROVE ACCESS.

## MODEL 3612F (WITH FILTER) SHOWN

### STEP 5

INSTALL SUPPLIED DRAIN COMPONENTS AS SHOWN. RED COMPRESSION WASHERS ADAPT FROM 1-1/4" TO 1-1/2" AT EACH DRAIN TAIL PIECE. BLACK COMPRESSION WASHERS ARE USED IN TRAP ADAPTERS AT TEES. USE APPROPRIATE PVC CEMENT TO MAKE SOLVENT CEMENT CONNECTIONS. TRIM WASTE BEND AND/OR TAIL PIECE LENGTH IF REQUIRED. NOTE THAT EXTRA PARTS MAY BE INCLUDED TO FACILITATE OTHER CONFIGURATIONS OF THIS FOUNTAIN.



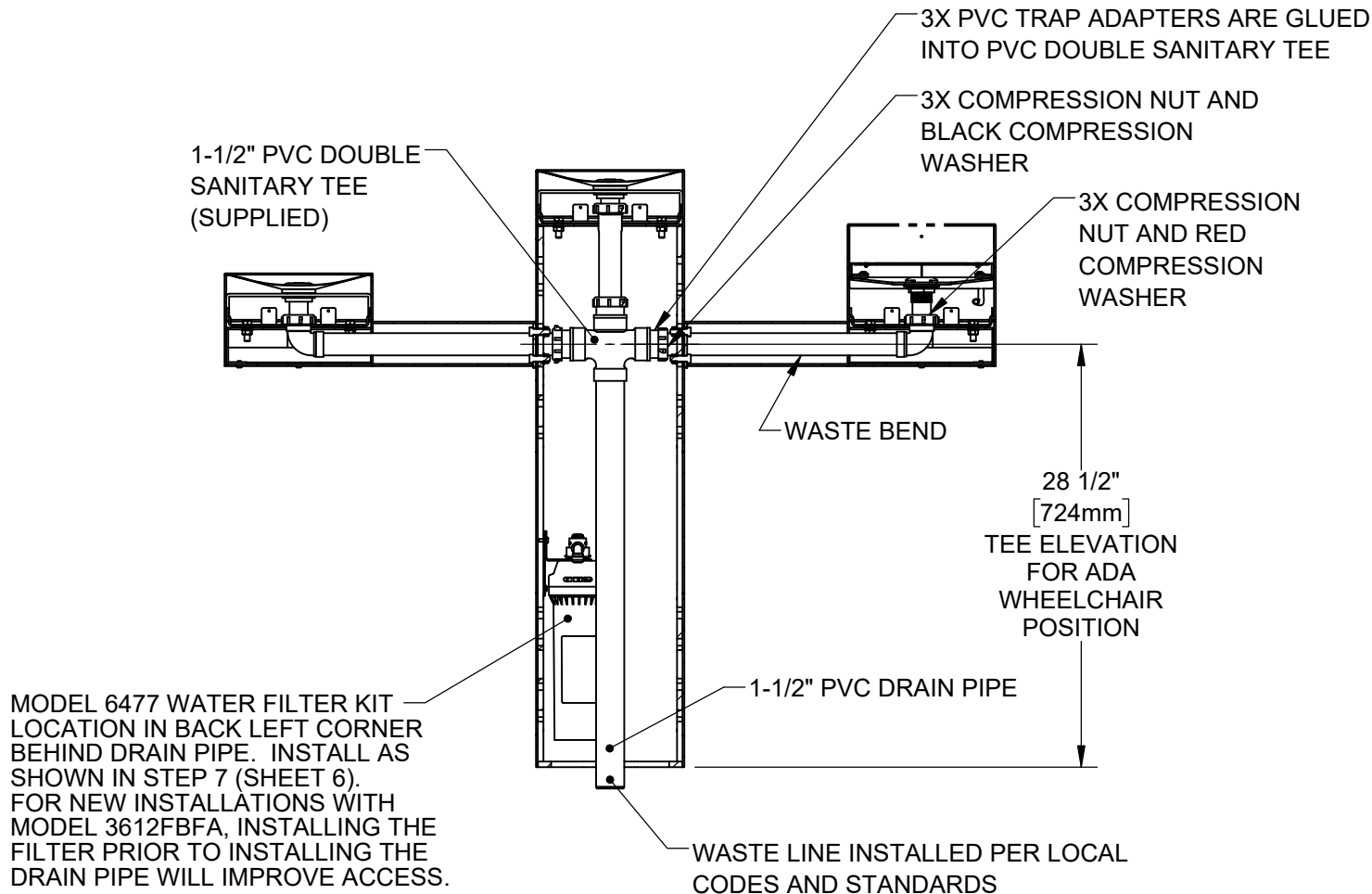
**Haws**  
Since 1906

1455 KLEPPE LANE  
SPARKS, NEVADA 89431  
(775) 359-4712 FAX (775) 359-7424  
E-MAIL: HAWS@HAWS.CO.COM  
WEBSITE: WWW.HAWS.CO.COM

ECN: 5666	REV. ECN: 6030	BY: FV	MODEL(S) 3612 & 3612F	PART NUMBER 0580001180.D
DRAWN: DHP	DATE: 6/11/20	CHKD: JL		REVISION 6
APPROVED: FV	DATE: 07/02/24	SCALE: 1:24	DRAWING TYPE: INSTALLATION	SIZE: A

SHEET 4 OF 9

# INSTALLATION INSTRUCTIONS



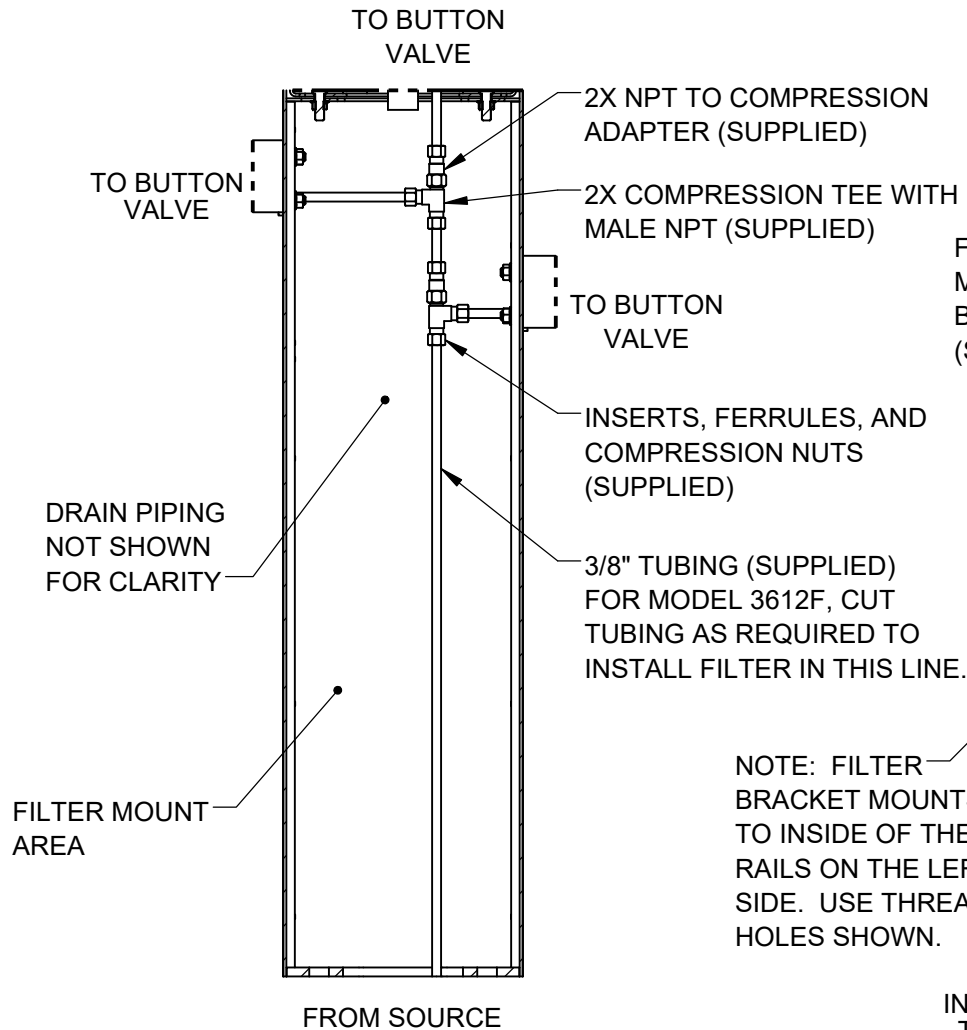
## ALTERNATE MODEL 3612FBFA (WITH FILTER) SHOWN

### STEP 5 (ALTERNATE)

INSTALL SUPPLIED DRAIN COMPONENTS AS SHOWN. RED COMPRESSION WASHERS ADAPT FROM 1-1/4" TO 1-1/2" AT EACH DRAIN TAIL PIECE. BLACK COMPRESSION WASHERS ARE USED IN TRAP ADAPTERS AT TEE(S). USE APPROPRIATE PVC CEMENT TO MAKE SOLVENT CEMENT CONNECTIONS. TRIM WASTE BEND AND/OR TAIL PIECE LENGTH IF REQUIRED. NOTE THAT EXTRA PARTS MAY BE INCLUDED TO FACILITATE OTHER CONFIGURATIONS OF THIS FOUNTAIN.

 <div><b>Haws</b> Since 1906</div>				1455 KLEPPE LANE SPARKS, NEVADA 89431 (775) 359-4712 FAX (775) 359-7424 E-MAIL: HAWS@HAWS.CO.COM WEBSITE: WWW.HAWS.CO.COM					
ECN: 5666		REV. ECN: 6030		BY: FV		MODEL(S)		PART NUMBER	
DRAWN: DHP		DATE: 6/11/20		CHKD: JL		3612 & 3612F		0580001180.D	
APPROVED: FV		DATE: 07/02/24						REVISION	
				SCALE: 1:12		DRAWING TYPE: INSTALLATION		SHEET 5 OF 9	
						SIZE: A		6	

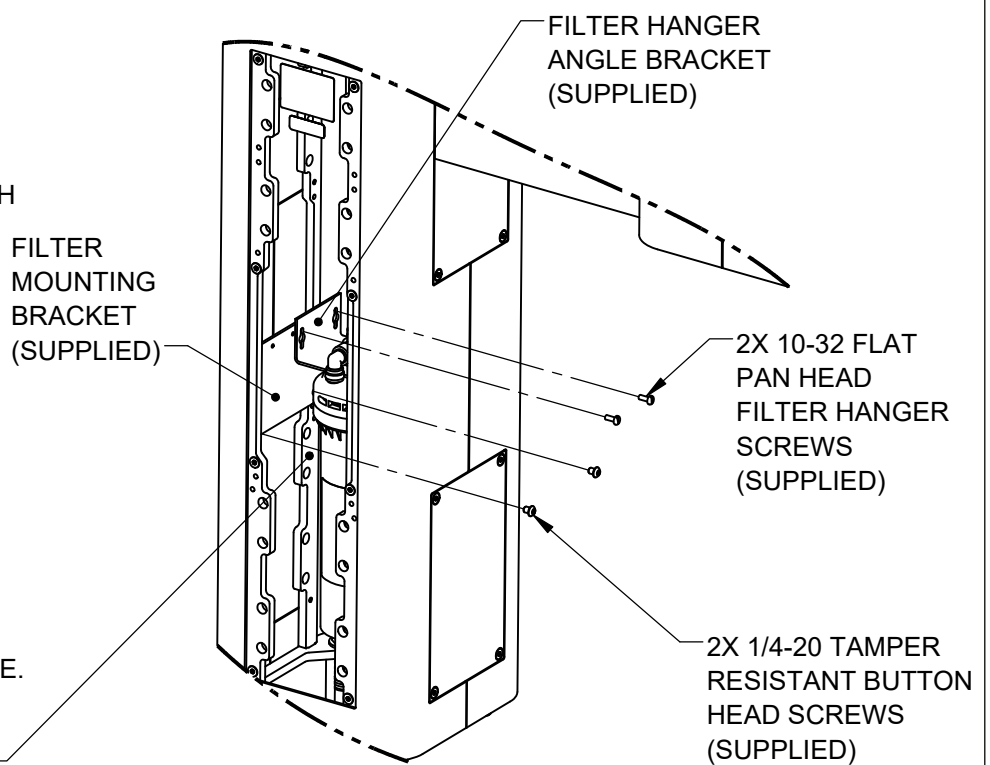
# INSTALLATION INSTRUCTIONS



## 3612 SUPPLY PLUMBING

### STEP 6

COMPLETE WATER SUPPLY PLUMBING AS SHOWN. OPEN SUPPLY VALVE(S) AND TEST. REPLACE ARM BOTTOM PLATES AND PEDESTAL ACCESS PLATES.



## 3612F FILTER BRACKET MOUNTING

### STEP 7

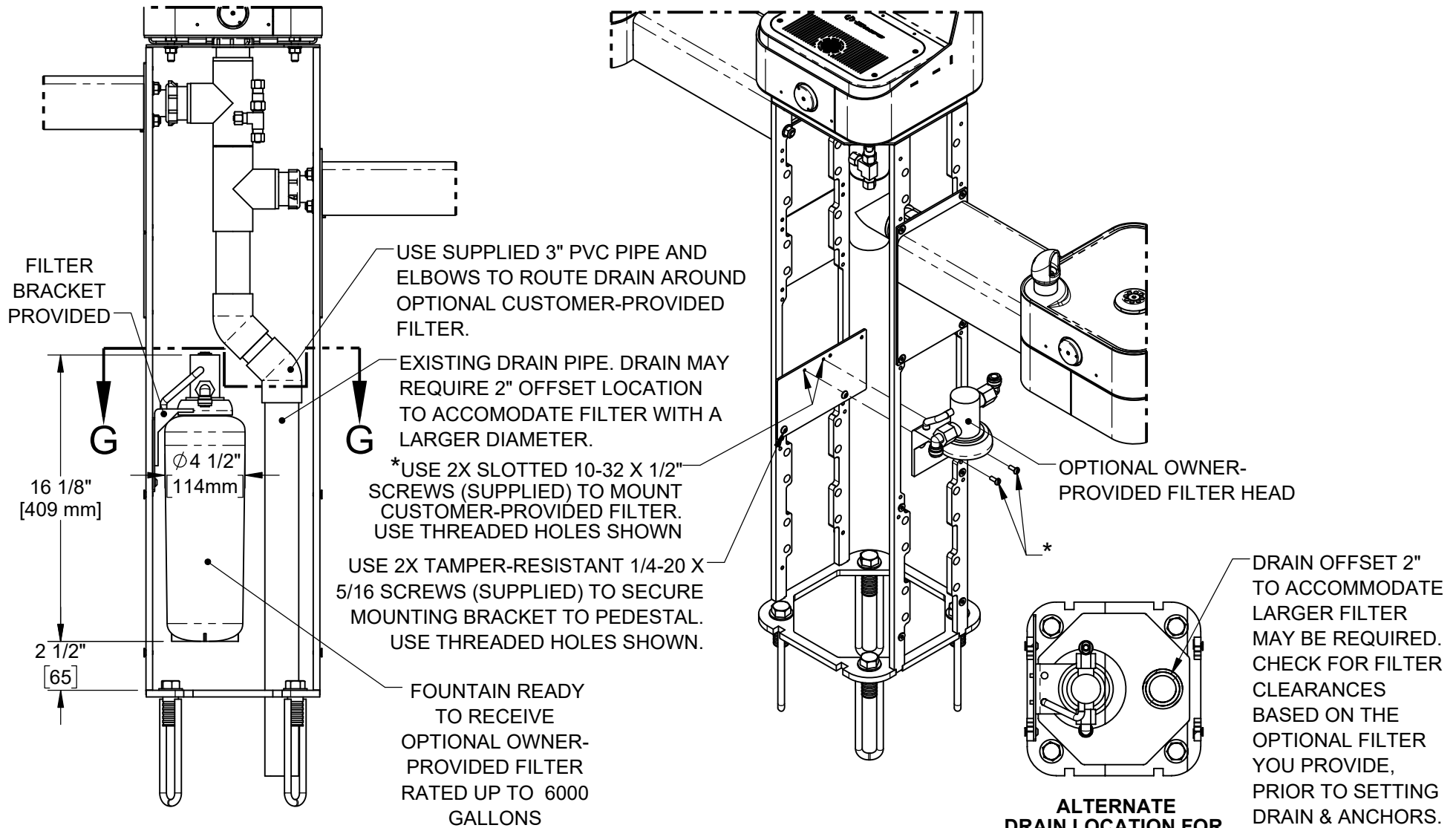
INSTALL FILTER MOUNTING BRACKET (SUPPLIED WITH MODEL 6477) TO LEFT INSIDE VERTICAL RAILS USING 2 BUTTON HEAD SCREWS AS INDICATED ABOVE. INSTALL FILTER HEAD ON HANGER ANGLE WITH 4 SUPPLIED SELF-TAPPING SCREWS. IF USING THE SUPPLIED 3000-GALLON CAPACITY FILTER, INSTALL FILTER HANGER ANGLE BRACKET IN RIGHTMOST HOLES AS SHOWN. SEE SHEET 6 FOR OWNER-PROVIDED FILTER (6000-GALLON CAP.) INSTALLATION INSTRUCTIONS. SEE MODEL 6477 OPERATION AND MAINTENANCE MANUAL FOR ADDITIONAL DETAILS.



1455 KLEPPE LANE  
SPARKS, NEVADA 89431  
(775) 359-4712 FAX (775) 359-7424  
E-MAIL: HAWS@HAWS.CO.COM  
WEBSITE: WWW.HAWS.CO.COM

ECN: 5666	REV. ECN: 6030	BY: FV	MODEL(S) 3612 & 3612F	PART NUMBER 0580001180.D
DRAWN: DHP	DATE: 6/11/20	CHKD: JL		REVISION 6
APPROVED: FV	DATE: 07/02/24	SCALE: 1:24	DRAWING TYPE: INSTALLATION	SHEET 6 OF 9


## OPTIONAL OWNER-PROVIDED FILTER INSTALLATION



### INSTRUCTIONS FOR OPTIONAL OWNER-PROVIDED FILTER

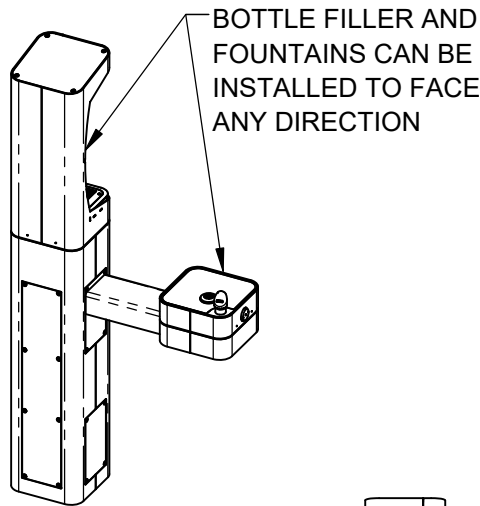
**NOTE: MOUNTING BRACKET, 1-1/2" X 3" PVC PIPE AND 45° PVC ELBOWS (QTY. 2) SUPPLIED WITH 6477 FILTER MOUNTING KIT ARE REQUIRED (SHOWN ON MODEL 3612/3612F FOR REFERENCE ONLY). INSTALLATION INSTRUCTIONS APPLY TO EITHER NEW OR RETROFIT APPLICATIONS. SEE SHEETS 4 THRU 6 FOR STANDARD FILTER (3000-GALLON CAPACITY) INSTALLATION INSTRUCTIONS.**

### ALTERNATE DRAIN LOCATION FOR CUSTOMER SUPPLIED OPTIONAL FILTER SECTION A-A

				1455 KLEPPE LANE SPARKS, NEVADA 89431 (775) 359-4712 FAX (775) 359-7424 E-MAIL: HAWS@HAWS.CO.COM WEBSITE: WWW.HAWS.CO.COM			
ECN: 5666	REV. ECN: 6030	BY: FV	MODEL(S): 3612 & 3612F	PART NUMBER: 0580001180.D			
DRAWN: DHP	DATE: 8/11/20	CHKD: JL		REVISION: 6			
APPROVED: FV	DATE: 07/02/24	SCALE: 1:24	DRAWING TYPE: INSTALLATION	SIZE: A	SHEET 7 OF 9		

## NOTES ON OPTIONAL CONFIGURATIONS

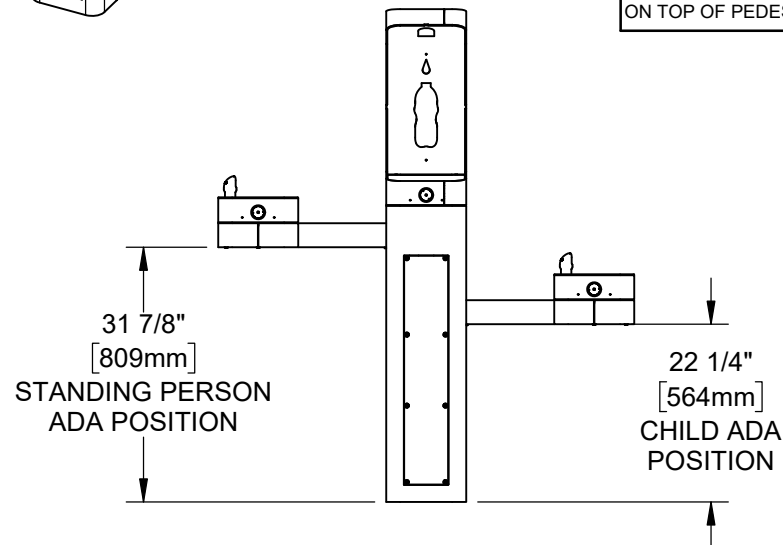
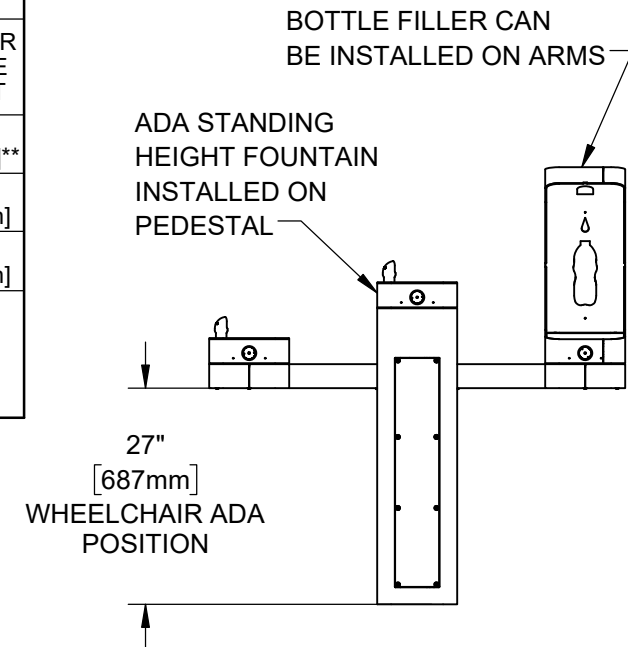
HAWS 3600/3600F SERIES OUTDOOR FOUNTAINS ARE MODULAR AND CAN BE ASSEMBLED AND CONFIGURED MANY DIFFERENT WAYS. DISPLAYED HERE ARE A FEW EXAMPLES. CONFIGURATIONS OTHER THAN THAT SHOWN IN THE INSTALLATION INSTRUCTIONS FOR THE 3612/3612F MAY AFFECT COMPLIANCE WITH ADA REGULATIONS. IT IS THE RESPONSIBILITY OF THE INSTALLER TO UNDERSTAND LOCAL, STATE, AND FEDERAL REGULATIONS AS APPLICABLE IF INSTALLING THIS FOUNTAIN IN CONFIGURATIONS OTHER THAN THAT INDICATED ON SHEET 1 (PAGE 6 OF 14).




ADA ARM HEIGHT POSITION OPTIONS				
	LEFT SIDE*	RIGHT SIDE*	ARM HEIGHT (LOWER EDGE)	BUBBLER NOZZLE HEIGHT
STANDING ADA	YES (STD)	NO	31-7/8 [809 mm]	39-3/8 [999 mm]**
WHEELCHAIR ADA	YES	YES (STD)	27 [687 mm]	34-5/8 [878 mm]
CHILD ADA	YES	YES	22-1/4 [566 mm]	29-7/8 [757 mm]

\* RIGHT AND LEFT CAN BE REVERSED IF PEDESTAL IS ROTATED 180°.

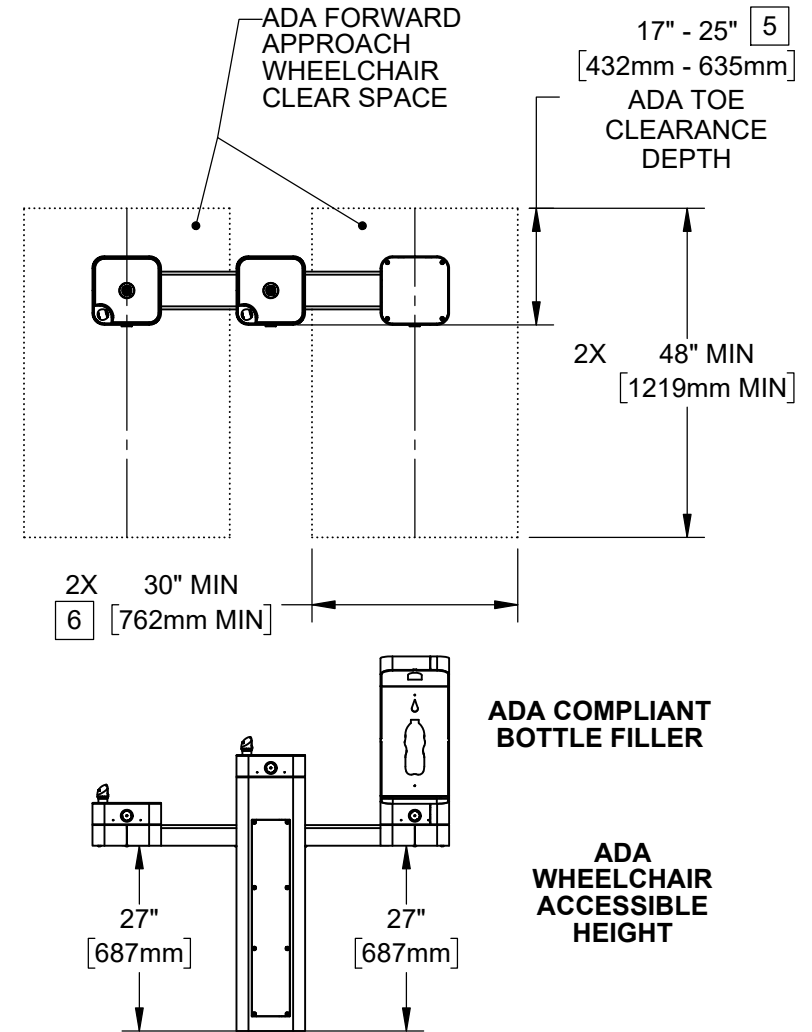
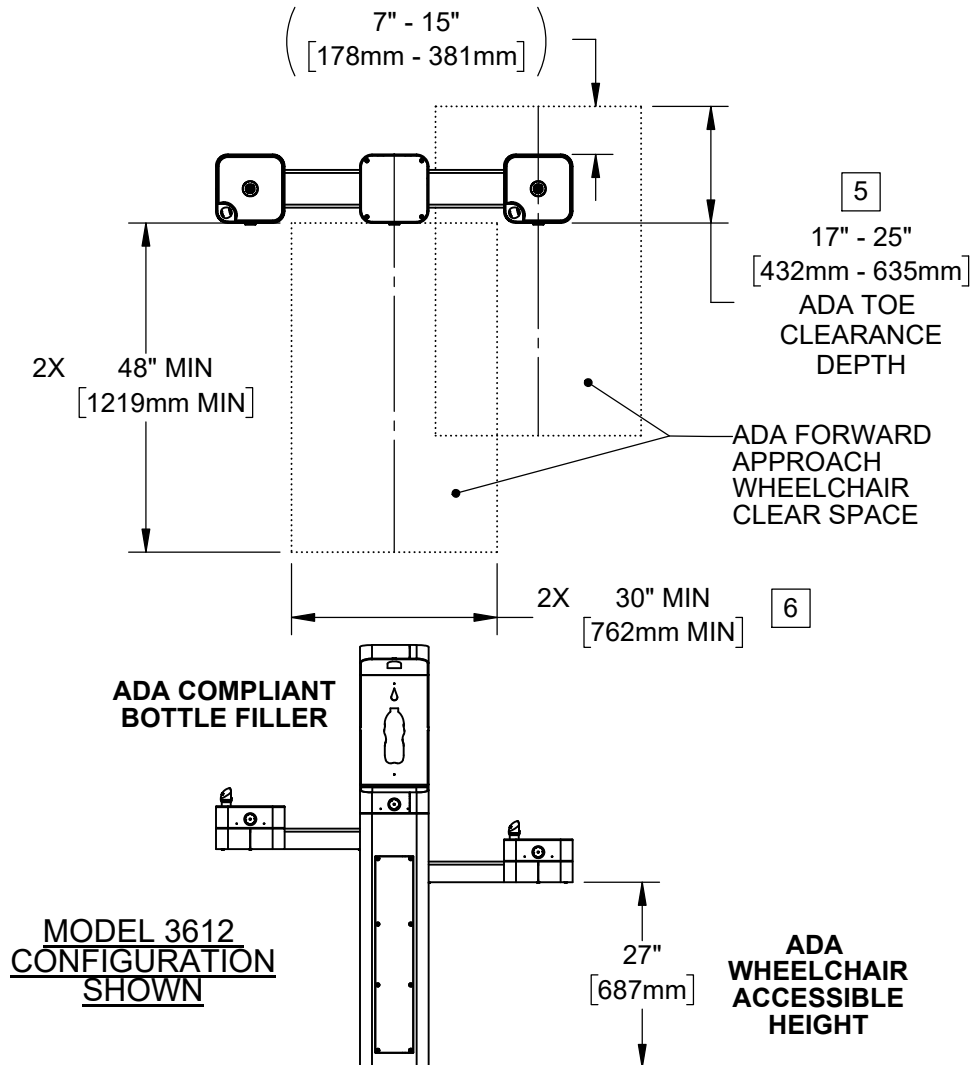
\*\*NOZZLE HEIGHT IS 41-1/2" WHEN FOUNTAIN IS INSTALLED ON TOP OF PEDESTAL.



				1455 KLEPPE LANE SPARKS, NEVADA 89431 (775) 359-4712 FAX (775) 359-7424 E-MAIL: HAWS@HAWS.CO.COM WEBSITE: WWW.HAWS.CO.COM	
				PART NUMBER 0580001180.D REVISION 6	
ECN: 5666	REV. ECN: 6030	BY: FV	MODEL(S)		3612 & 3612F
DRAWN: DHP	DATE: 8/11/20	CHKD: JL	APPROVED: FV		DATE: 07/02/24
SCALE: 1:24		DRAWING TYPE: INSTALLATION		SIZE: A	SHEET 8 OF 9


NOTES:

3. CLEAR FLOOR SPACES APPLY FOR ALL MODELS WITH A DRINKING FOUNTAIN OR BOTTLE FILLER INSTALLED AT ADA WHEELCHAIR ACCESSIBLE HEIGHT AND PEDESTAL MOUNTED BOTTLE FILLERS.
4. ORIENTATION OF CLEAR FLOOR SPACE IS DEPENDENT ON THE FOUNTAIN OR BOTTLE FILLER ORIENTATION.
- 5 SOME CALIFORNIA JURISDICTIONS MAY REQUIRE 18" MIN.
- 6 SOME CALIFORNIA JURISDICTIONS MAY REQUIRE 32" MIN.
7. REFER TO ADA STANDARDS AND/OR YOUR LOCAL BUILDING CODE FOR CLEAR SPACE GUIDELINES FOR PARALLEL APPROACH.



**MODEL 3612BFA ALTERNATE CONFIGURATION SHOWN**

THESE HAWS MODELS ARE FULLY COMPLIANT WITH THE FEDERAL 2010 AMERICANS WITH DISABILITIES ACT (ADA) ACCESSIBILITY REQUIREMENTS WHEN INSTALLED AS SHOWN HERE AND WHEN INSTALLED WITH PROPER CLEARANCES AND ACCESS. IT IS THE RESPONSIBILITY OF THE INSTALLER TO ADHERE TO LOCAL, STATE, AND FEDERAL CODES WHEN INSTALLING THIS UNIT. DISTANCE TO SURROUNDING OBJECTS, APPROACH SURFACES, ETC. SHOULD BE CONSIDERED.

				1455 KLEPPE LANE SPARKS, NEVADA 89431 (775) 359-4712 FAX (775) 359-7424 E-MAIL: HAWS@HAWS.CO.COM WEBSITE: WWW.HAWS.CO.COM			
ECN: 5666	REV. ECN: 6030	BY: FV	MODEL(S): 3612 & 3612F	PART NUMBER: 0580001180.D			
DRAWN: DHP	DATE: 8/11/20	CHKD: JL		REVISION: 6			
APPROVED: FV	DATE: 07/02/24	SCALE: 1:28	DRAWING TYPE: INSTALLATION	SIZE: A	SHEET 9 OF 9		