



INSTALLATION, OPERATION & MAINTENANCE INSTRUCTIONS

1455 Kleppe Lane ♦ Sparks, NV 89431-6467 ♦ (775) 359-4712 ♦ Fax (775) 359-7424
E-mail: haws@hawsco.com ♦ website: www.hawsco.com

No. 0510001188 (4)

MODELS 3610 & 3610F (with Filter) Outdoor Bottle Filler

NOTE TO INSTALLER: Please leave this information with the Maintenance Department.

LIMITED WARRANTY

HAWS warrants that all of its products are guaranteed against defective material or poor workmanship for a period of **one year from the date of shipment**. The foregoing notwithstanding, *HAWS* warrants certain specific products or components thereof for an adjusted period. A list of these excepted products and components and a description of their respective warranty terms may be found here: www.hawsco.com/warranty. *HAWS'* liability under this warranty shall be discharged by furnishing without charge F.O.B. *HAWS* factory any goods, or part thereof, which shall appear to the Company upon inspection to be of defective material or not of first-class workmanship, provided that a claim is made in writing to Company within a reasonable period after receipt of the product. Where claims for defects are made, the defective part or parts shall be delivered to the Company, prepaid, for inspection. *HAWS* shall not be liable for the cost of repairs, alterations or replacements, or the labor required to implement them, or for any expense connected therewith made by the owner or owner's agents, except upon written authority from *HAWS*. *HAWS* shall not be liable for any damages caused by defective materials or poor workmanship, except for replacements, as provided above. Buyer agrees that *HAWS* has made no other warranties either express or implied in addition to those above stated, except that of title with respect to any of the products or equipment sold hereunder and that *HAWS* shall not be liable for general, special, incidental, or consequential damages claimed to arise under the contract of sale.

Equipment manufactured by *HAWS* is warranted to function if installation and maintenance instructions provided are adhered to. The units also must be used for the purpose for which they were intended. Any *HAWS* emergency equipment is intended to supplement first-aid treatment. Due to widely varying conditions, *HAWS* cannot guarantee that the use of this emergency equipment will prevent serious injury or the aggravation of existing or prior injuries.

EXCEPT AS EXPRESSLY STATED HEREIN, HAWS HEREBY DISCLAIMS ALL WARRANTIES, WHETHER EXPRESS OR IMPLIED, ARISING BY LAW OR OTHERWISE, INCLUDING WITHOUT LIMITATION, ANY IMPLIED WARRANTIES OF MERCHANTABILITY AND FITNESS FOR A PARTICULAR PURPOSE. THIS WARRANTY MAY NOT BE MODIFIED OR EXTENDED WITHOUT THE WRITTEN CONSENT OF HAWS. REMEDIES AND REPLACEMENTS STATED HEREIN ARE EXCLUSIVE. IN NO EVENT SHALL HAWS BE LIABLE FOR ANY SPECIAL, PUNITIVE, CONSEQUENTIAL OR INCIDENTAL DAMAGES TO ANY PERSON INCLUDING BUT NOT LIMITED TO DAMAGES FOR LOSS OF USE OR PROFITS, SUBSTITUTE PRODUCTS OR COSTS, PROPERTY DAMAGE, OR OTHER MONETARY LOSS.

SHOULD YOU EXPERIENCE DIFFICULTY WITH THE INSTALLATION OF THIS MODEL PLEASE CALL:

TECHNICAL SUPPORT: 1-800-766-5612
FOR CUSTOMER SERVICE: 1-888-640-4297

RECOMMENDED TOOLS:

- Measuring Tape
- PVC Pipe Cutter
- Plastic Tubing Cutter
- PVC Solvent Weld Glue
- ¼" Bit-Holding Screwdriver
- Level
- 10" Pipe Wrench
- Adjustable Plier
- 1/8 and 5/32 Tamper Resistant Hex Bits (Supplied)
- 9/16" and 5/8" Box/Open Combination Wrenches, 8" Max Length
- 3/8" Socket Wrench/Ratchet, 8" Max Length
- 9/16" Deep Socket
- 15/16" Socket

LOCATION OF UNIT: The Model 3610/3610F (with Filter) Fountain can be installed and assembled to be ADA accessible by first locating the pedestal base on a hardscape with dimensions that comply with your local, state, and federal codes regarding clear floor space and pedestrian protection area. Refer to the last page of this document for more information. The bottle filler meets ADA requirements for either a front approach or a side approach. When installing this unit, local, state and federal (including ADA) codes must be adhered to. If height other than shown is required, then dimensions must be adjusted accordingly.

ATTENTION: For model 3610F (model with 3000-gallon capacity Filter), the Operating Temperature Range for the 6477 Filter Kit Assembly (Required - supplied separately) is 40° F - 100° F (4.4° C – 37.8° C).

SUPPLY LINE: Model 3610 – The minimum recommended line size is 1/2"IPS with 30-90 psi (2-6 ATM) flowing pressure. Where sediment or mineral content is a problem, an inlet filter is recommended. **Model 3610F (with 3000-gallon capacity Filter)** – The minimum recommended line size is 1/2"IPS with 40-90 psi (2.76-6 ATM) flowing pressure.

PLUMBING CONNECTIONS: Model 3610 – Water supply inlet connection is a 3/8"O.D. compression fitting. Waste outlet is 1-1/2" PVC pipe. **Model 3610F** – Water supply inlet and outlet connection (for Filter) is a 3/8"O.D. push-in type fitting. Waste outlet is 1-1/2" PVC pipe. Plumbing connections will vary depending on how each model is configured during assembly. Please consult the installation drawings below for supply and waste fitting arrangements and assembly for your specific model.

MAINTENANCE: Models 3610 & 3610F Periodically clean the pushbutton valve strainer. Refer to 5874 Series Valve Operation and Maintenance Manual for more information. **Model 3610F** – Filter replacement to occur at 1 year maximum or 3,000 gallons maximum, whichever comes first. Replace filter (3000-gallon capacity) per Filter Replacement instructions listed on model 6477 Operation & Maintenance Manual.

INSTALLATION PROCEDURE

GENERAL NOTES:

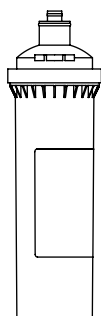
1. For all compression fitting connections, only connect NSF-61 copper or plastic 3/8" outside diameter tubing. The following assembly instructions must be followed to ensure a watertight connection:
 - a. Cut tubing square and clean. Deburr if necessary.
 - b. Place compression nut and ferrule over end of tubing.
 - c. For plastic tubing (must be 1/4" inside diameter), insert supplied tubing insert into end of tubing.
 - d. Push tube into the fitting until it bottoms out.
 - e. Thread nut onto fitting and tighten snugly with 5/8" wrenches.

Tube Sizes	O.D. Tolerance	Insertion Depth
3/8"	±.005"	3/4"

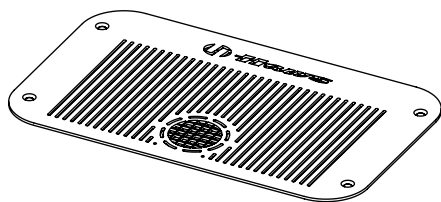
TROUBLESHOOTING	
PROBLEM	REPAIR CHECKLIST
1. Insufficient bottle filler flow	<ol style="list-style-type: none"> 1a. For 3610 – Verify minimum 30 psi flowing supply pressure. For 3610F – Verify minimum 40 psi flowing supply pressure. b. Nozzle strainer is clogged. Use nozzle removal tool to remove strainer and replace. Replacement strainers may be ordered by calling Customer Service. c. Check that inlet screwdriver stop valve is wide open. Clean inlet strainer or adjust valve to increase flow. See 5874 Series Valve Manual*. d. For 3610F (Only) – Check water filter. Replace at 1 year or 3,000 gallons (max.), whichever comes first.

*For more information about Haws products, see our website: www.hawesco.com

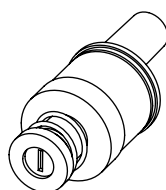
REPLACEMENT PARTS BOTTLE FILLER



**MODEL 6428
FILTER CARTRIDGE
(FOR 36XXF SERIES
MODELS)**



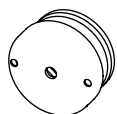
**0410000564
BOTTLE FILLER DRAIN
COVER PLATE**



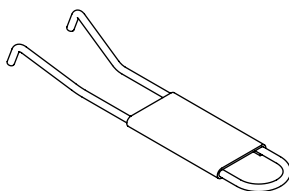
**MODEL VRK5874HF
VALVE REPAIR KIT,
HIGH FLOW**



**MODEL VRKNOZ1
QTY 10 AERATORS
AND INSTALL TOOL**



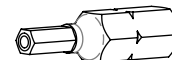
**MODEL PBA7
BUTTON ASSEMBLY**



**0006983506
SPANNER WRENCH**

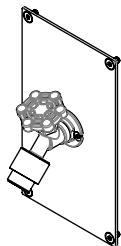


**0510001030
HEX BIT,
PINNED, 5/32"**

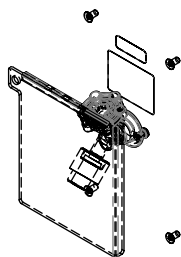


**0510001029
HEX BIT,
PINNED, 1/8"**

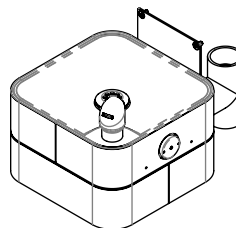
OPTIONAL ACCESSORIES



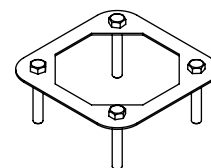
**MODEL 3661 HOSE BIB
(NOT FREEZE RESISTANT)**



**MODEL 3660 LOCKABLE HOSE BIB
(NOT FREEZE RESISTANT)**



**MODEL 3670 DOG BOWL
(NOT FREEZE RESISTANT)**



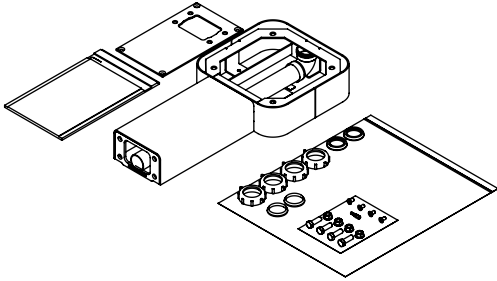
**MODEL MTG.3600
INSTALLATION AID**

3610 & 3610F MODULAR OUTDOOR FOUNTAIN SYSTEM PARTS BREAKDOWN

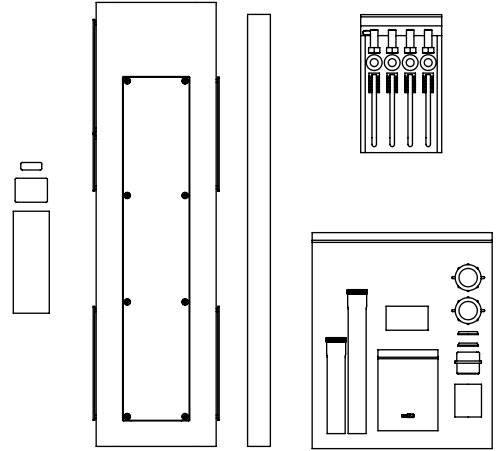
WHEN ORDERING PARTS, PLEASE
SPECIFY PART NUMBER

Haws <i>Since 1906</i>		1455 KLEPPE LANE SPARKS, NEVADA 89431 (775) 359-4712 FAX (775) 359-7424 E-MAIL: HAWS@HAWS.CO.COM WEBSITE: WWW.HAWS.CO.COM	
ECN: 5666	REV. ECN: 6030	BY: FV	MODEL(S) 3610 & 3610F
DRAWN: DHP	DATE: 6/11/20	CHKD: JL	PART NUMBER 0510001188
APPROVED: FV	DATE: 07/02/24	SCALE: 1:2	REVISION 4
DRAWING TYPE: PARTS BREAKDOWN		SIZE: A	SHEET 1 OF 2

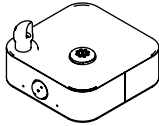
AVAILABLE SUB COMPONENT MODELS



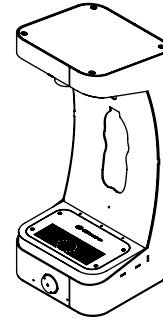
MODEL 3671 PEDESTAL ARM ASSEMBLY



MODEL 3674 PEDESTAL ASSEMBLY



MODEL 3680 FOUNTAIN ASSEMBLY



MODEL 3690 BOTTLE FILLER ASSEMBLY

**3610 & 3610F
MODULAR OUTDOOR
FOUNTAIN SYSTEM**

PARTS BREAKDOWN

WHEN ORDERING PARTS, PLEASE
SPECIFY PART NUMBER

			1455 KLEPPE LANE SPARKS, NEVADA 89431 (775) 359-4712 FAX (775) 359-7424 E-MAIL: HAWS@HAWS.CO.COM WEBSITE: WWW.HAWS.CO.COM		
ECN: 5666	REV. ECN: 6030	BY: FV	MODEL(S) 3610 & 3610F		PART NUMBER 0510001188
DRAWN: DHP	DATE: 6/11/20	CHKD.: JL			REVISION 4
APPROVED: FV	DATE: 07/02/24	SCALE: 1:16	DRAWING TYPE: PARTS BREAKDOWN	SIZE: A	SHEET 2 OF 2