



model 1922HO

Vandal-Resistant Motion-Activated Bottle Filler w/Drip Tray Drain

FEATURES & BENEFITS

FOUNTAIN VALVE

Bottle filler incorporates a touchless sensor operated stainless steel solenoid valve controlled by a transformer for handsfree operation. A pressure regulator is used to adjust the bubbler flow according to incoming water pressures.

CONSTRUCTION

Heavy duty 14 gauge Type 304 stainless steel bottle filler and drain brackets with a satin finish that resists stains and corrosion, and have soft rounded corners. Unit features vandal-resistant bottom plates, and a serviceable replaceable dispensing nozzle.

ADA COMPLIANCE

ADA-compliant bottle filler required for wheel chair use, and for the standing person.

IN-WALL DRAIN

Drip tray captures unused water and lets it drain to the facilities waste lines.

LAMINAR FLOW

Adjustable, splash-free, 1 gpm (3.78 L) laminar flow.

MOUNTING OPTIONS

Select from mounting plate models to complete installation. Unit can mount on various wall types.

TAMPER RESISTANT

30-second obstruction time-out to reduce tampering of sensor.



SPECIFICATIONS

Model 1922HO vandal-resistant wall mounted motion-activated bottle filler and drain shall include 100% lead-free waterways, satin stainless steel construction, 1 gpm (3.78 L) laminar flow, vandal-resistant sensor operated stainless steel solenoid valve with 30-second obstruction time-out controlled by a transformer, drip tray drain, vandal-resistant bottom plate and stainless steel back panels (order models 1920HO and 6468 if panels are not required).

FOR INDOOR USE ONLY

APPLICATIONS

This type of wall mounted bottle filler may be placed in settings such as schools and other locations in and around office buildings with existing fountain installations where the temperature remains above freezing. Haws manufactures drinking fountains, faucets and electric water coolers to be lead-free by all known definitions including NSF/ANSI/CSA 61-Section 9, NSF/ANSI/CSA 372, California Proposition 65, and the Federal Safe Drinking Water Act. Product is compliant to California Health and Safety Code 116875 (AB 1953-2006), and NSF/ANSI/CAN 61: Q ≤ 1.

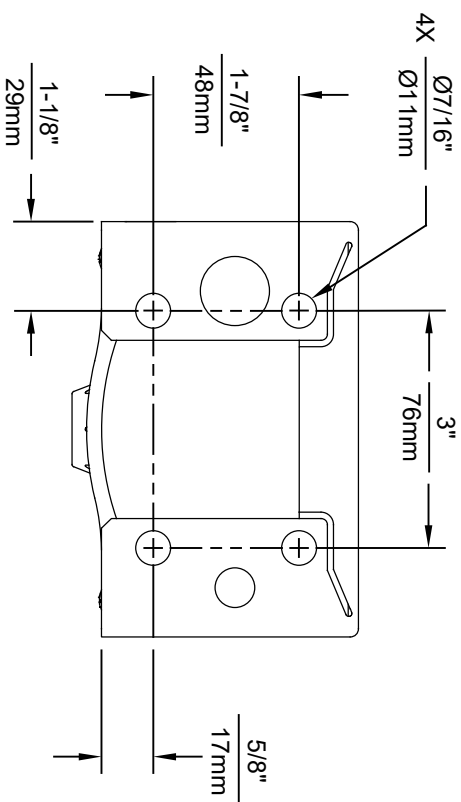
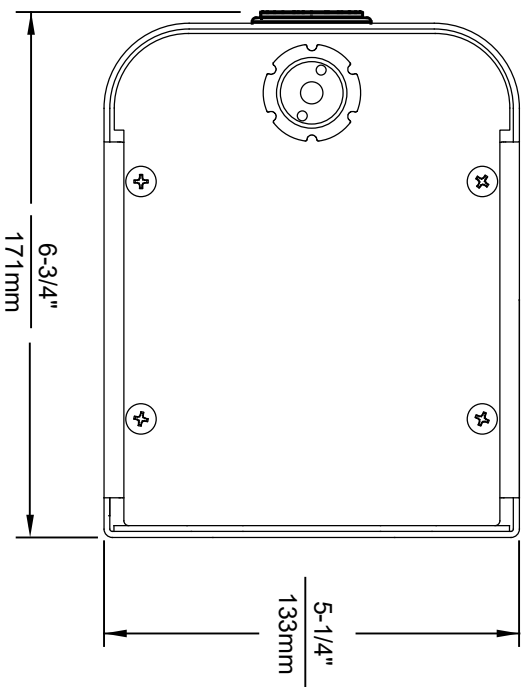
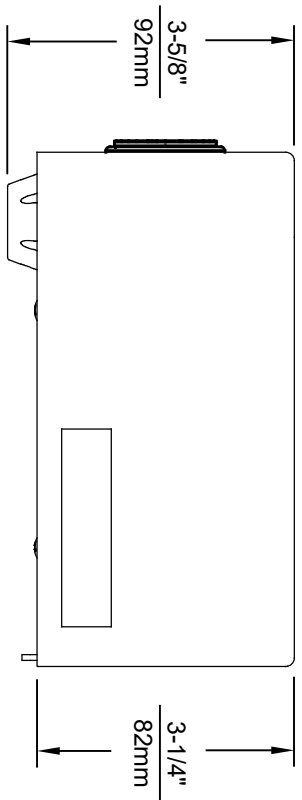
OPTIONS

Mounting plate model 6700R, on wall mounting plate for bottle filler and/or drain bracket.

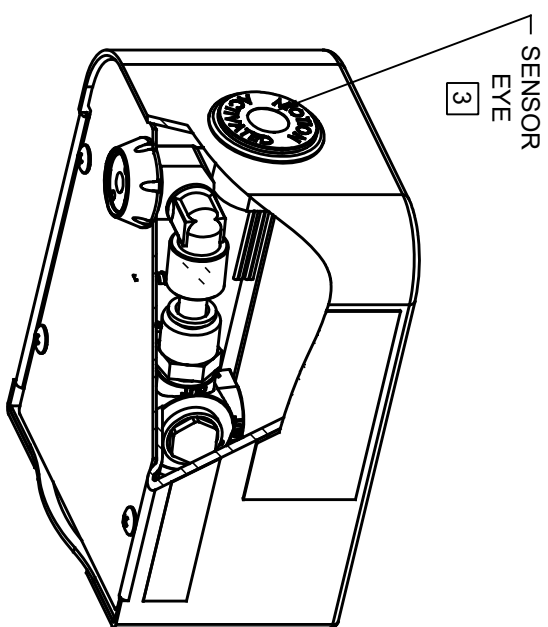
Mounting plate model 6700, in wall mounting plate for bottle filler and/or drain bracket.

For more information, visit www.hawsc.com or call (888) 640-4297.





1920HO SERIES MOUNTING HOLE LOCATIONS
(3/8" - 16 UNC MOUNTING HARDWARE NOT SUPPLIED)



NOTES:

1. SEE SEPARATE INSTALLATION DRAWINGS FOR MOUNTING PLATES AND BACKPANELS
2. WHEN INSTALLING THIS UNIT, LOCAL, STATE OR FEDERAL CODES SHOULD BE ADHERED TO FOR INSTALLATION LOCATIONS, WASTE AND SUPPLY REQUIREMENTS OTHER THAN SHOWN.
3. REFER TO 1RKHO.H OPERATION & MAINTENANCE INSTRUCTIONS FOR SENSOR SETUP.

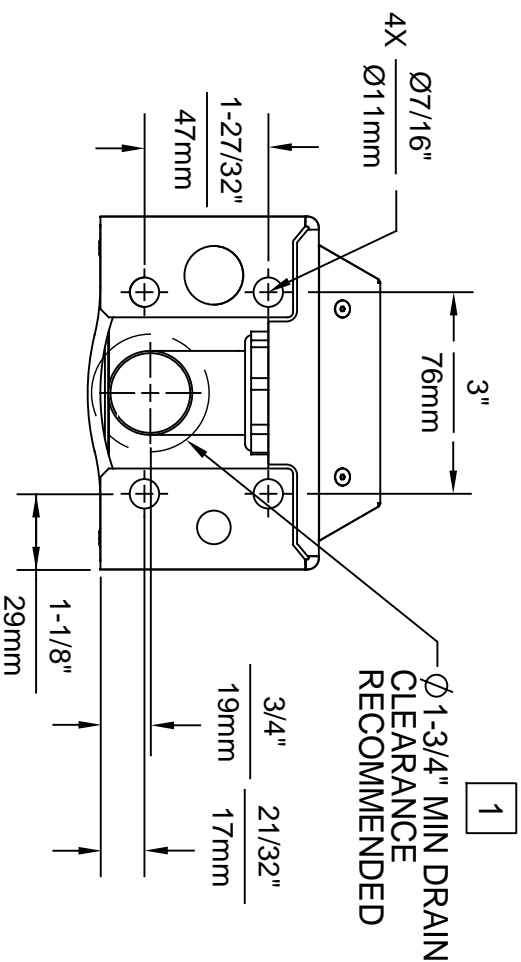
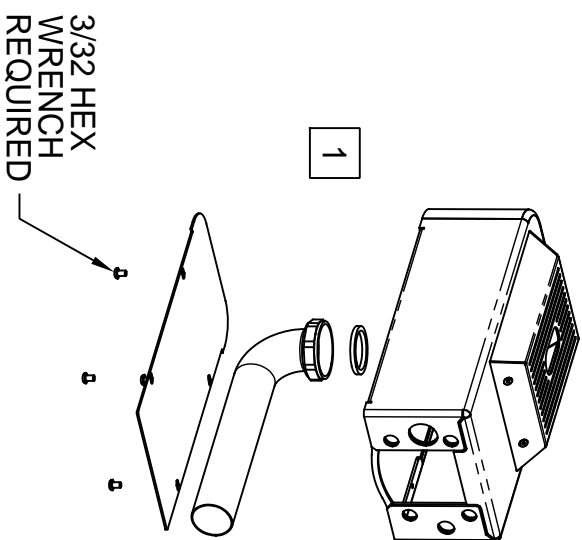
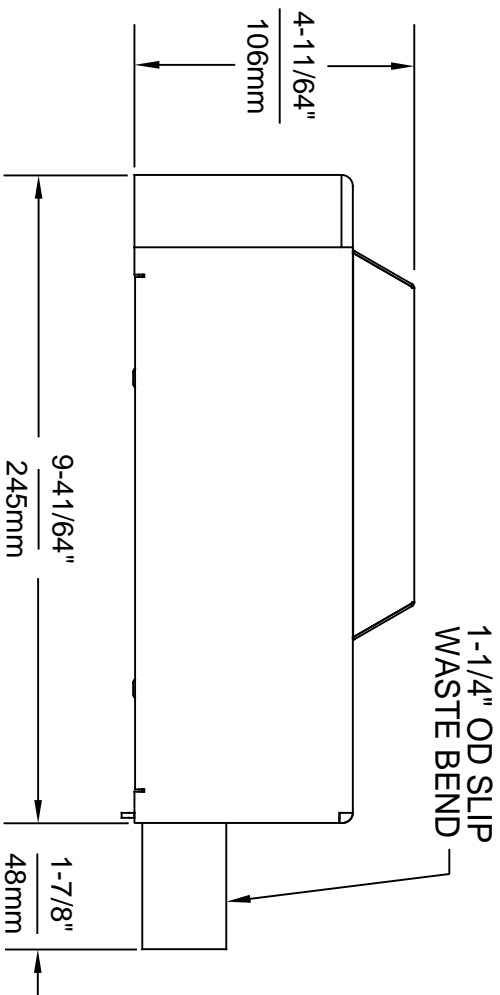
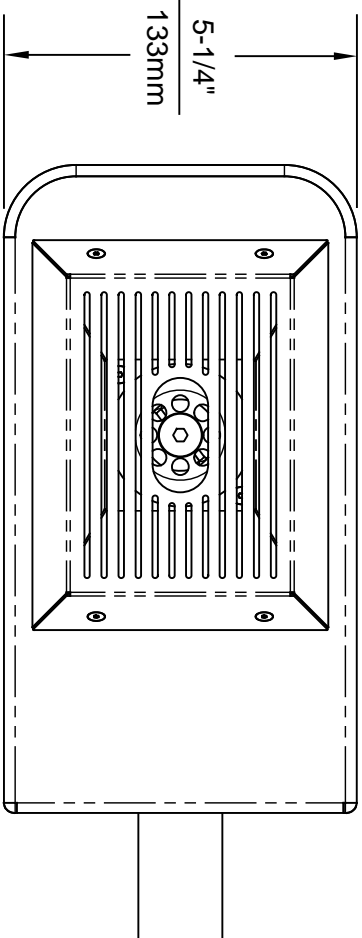


1455 KLEPPE LANE
SPARKS, NEVADA 89431
(775) 359-4712 FAX (775) 359-7424
E-MAIL: HAWS@HAWSCCO.COM
WEBSITE: WWW.HAWSCCO.COM

EQ. NO.	REVISED PER BY	MODEL(S)	PART NUMBER
5274	EQ. 5681 B.M.	1920HO/1920HPSHO/1920WHO	0510001063.D
DRAWN BY	DATE	SCALE	REVISION
B.M.	05/19/21	N/A	4
APPROVED	DATE	DRAWING TYPE	SHEET 1 OF 6
B.M.	05/19/21	INSTALLATION	

NOTES:

1. ASSEMBLE DRAIN WITH NUT AND WASHER AS SHOWN. AFTER INSTALLATION, CAREFULLY SEAL WALL AROUND DRAIN.
2. WHEN INSTALLING THIS UNIT, LOCAL, STATE, OR FEDERAL CODES SHOULD BE ADHERED TO. INSTALL A TRAP IN THE WASTE LINE OF WASTE DRIP TRAY (SHOWN) AND A SCREWDRIVER STOP IN THE SUPPLY LINE OF BOTTLE FILLER UNIT (SHOWN ON SHEET 1) IF REQUIRED.
3. 3/8" DIAMETER BOLTS OR SCREWS (NOT SUPPLIED) ARE RECOMMENDED.



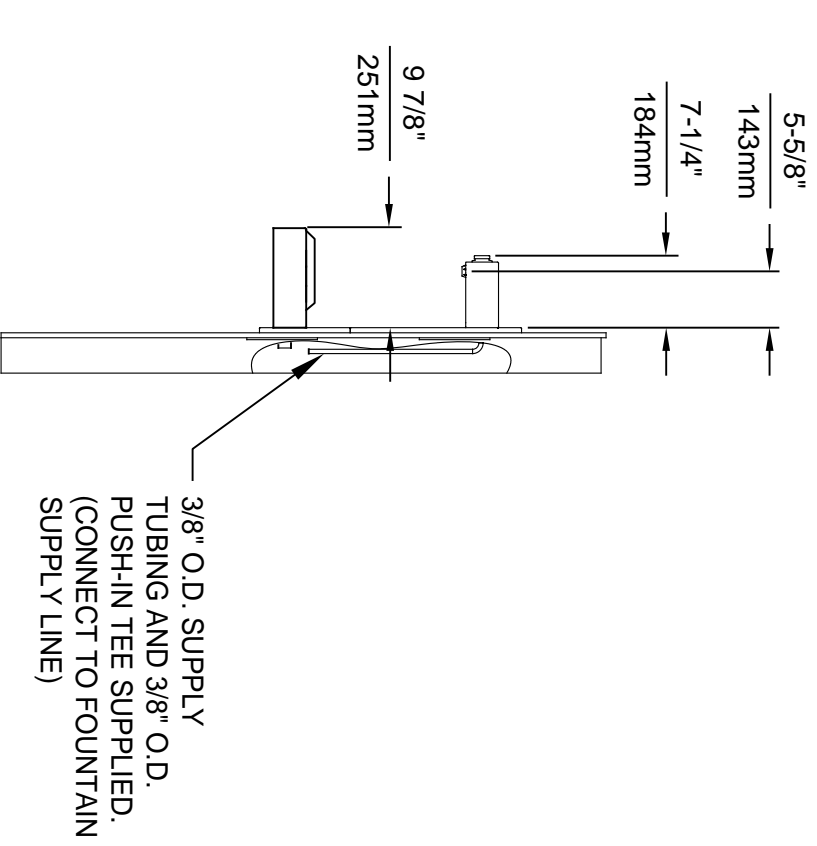
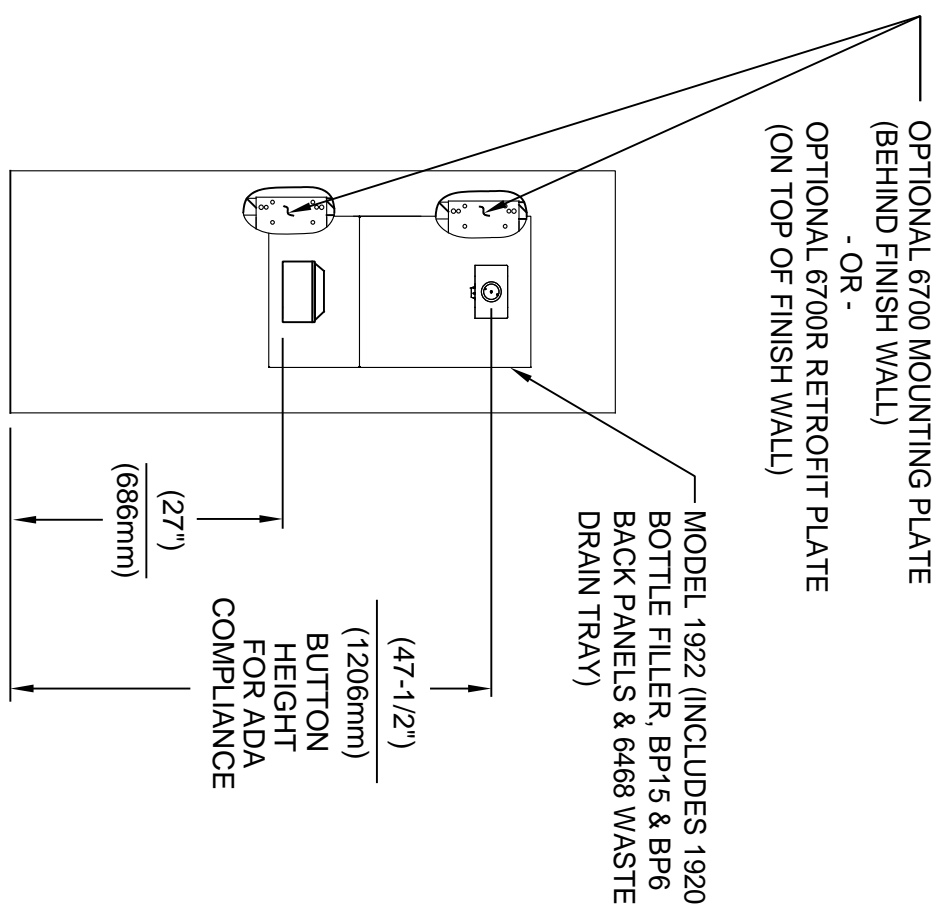
WASTE DRAIN TRAY DETAIL SHOWN
BOTTLE FILLER DETAIL ON SHEET 2



Haws

1456 KLEPPE LANE
SPARKS, NEVADA, 89431
(775) 359-4712 FAX (775) 359-7424
E-MAIL: HAWS@HAWSCO.COM
WEBSITE: WWW.HAWSCO.COM

ECN NO. REVISED PER BY:	MODEL(S)	1922
5807 ECN: 5807	DP	
DATE: 11/02/20	CHKD:	
DP	FV	
APPROVED: FV	DATE: 11/10/20	SCALE: N/A
	DRAWING TYPE:	INSTALLATION
	SIZE: A	SHEET 2 OF 3
	PART NUMBER	0580001129.D
	REVISION:	1



AMERICANS WITH DISABILITIES ACT (ADA) INSTALLATION HEIGHTS

1. SEE SEPARATE INSTALLATION DRAWINGS FOR MOUNTING PLATES AND BACKPANELS
2. WHEN INSTALLING THIS UNIT, LOCAL, STATE OR FEDERAL CODES SHOULD BE ADHERED TO FOR INSTALLATION LOCATIONS, WASTE & SUPPLY REQUIREMENTS OTHER THAN SHOWN.

		Haws		1456 KLEPPE LANE SPARKS, NEVADA, 89431 (775) 359-4712 FAX (775) 359-7424 E-MAIL: HAWS@HAWSCO.COM WEBSITE: WWW.HAWSCO.COM	
ECN NO. REVISED PER BY:	MODEL(S)	DATE:	DATE:	SCALE:	DRAWING TYPE:
5607	1922	11/02/20	11/10/20	N/A	INSTALLATION
DP	CHKD:	EV	EV	SIZE:	SHEET
				A	3 OF 3
APPROVED:					
EV					
PART NUMBER		REVISION			
0580001129.D		1			