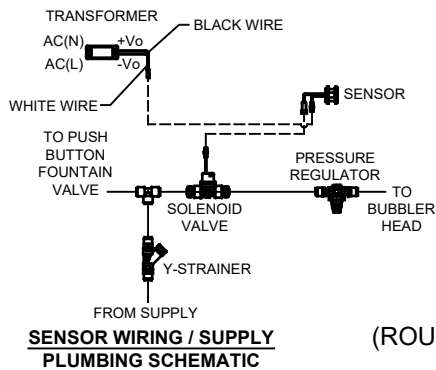
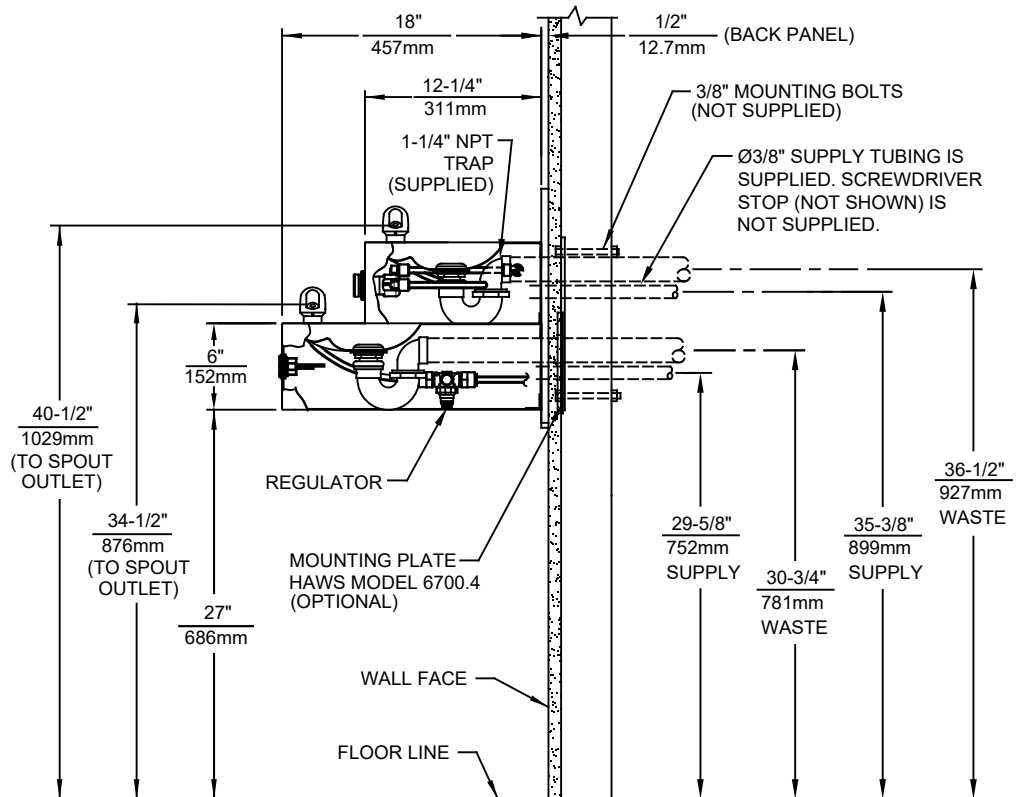
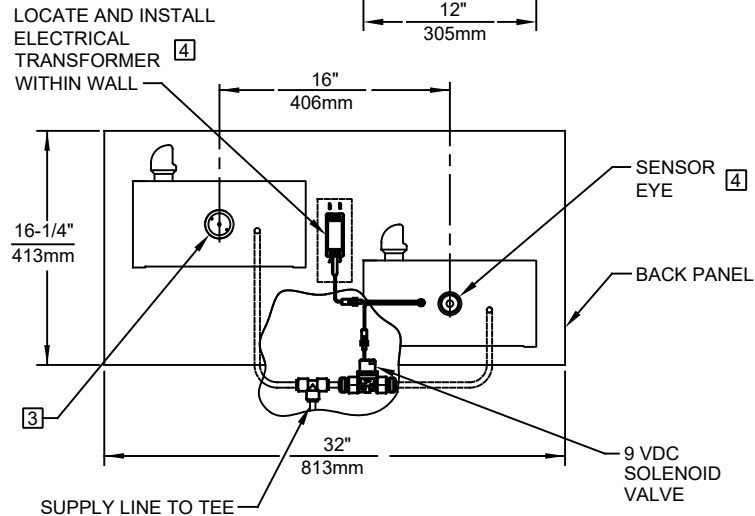


NOTES:

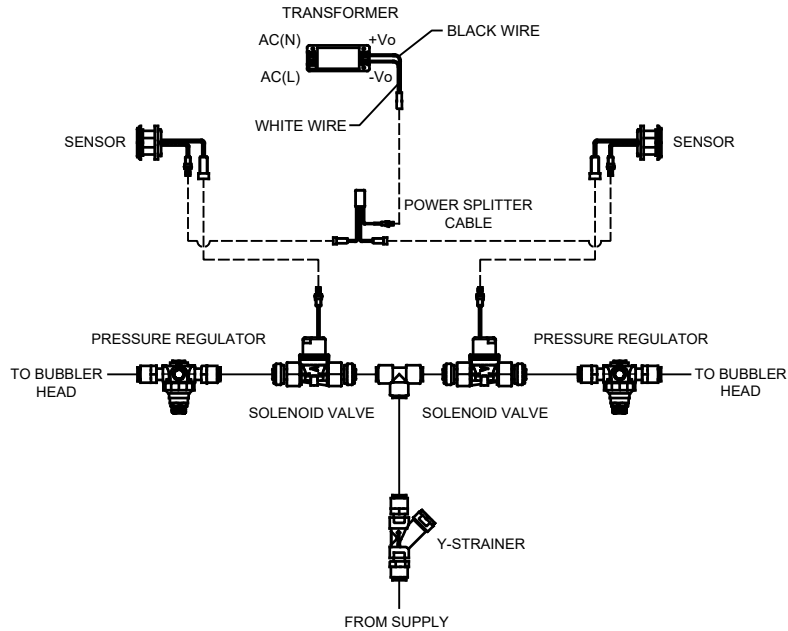
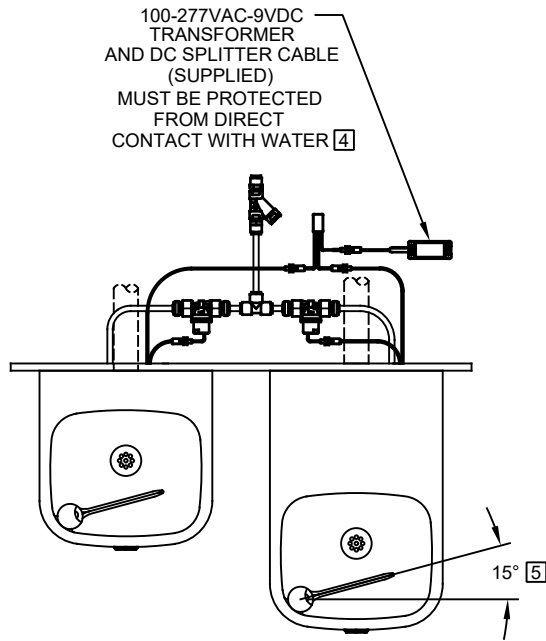
1. HOLD ROUGH-IN DIMENSIONS $\pm 1/4"$ (6.4mm).
2. WHEN INSTALLING THIS UNIT, LOCAL, STATE, OR FEDERAL CODES SHOULD BE ADHERED TO. FOR INSTALLATION HEIGHTS OTHER THAN SHOWN, DIMENSIONS MARKED (*) MUST BE ADJUSTED ACCORDINGLY.
3. REFER TO 5874 SERIES/VRK5874 OPERATION AND MAINTENANCE MANUAL FOR PUSH BUTTON AND VALVE INSTALLATION AND MAINTENANCE INSTRUCTIONS.
4. REFER TO 1RKHO OR 2RKHO SERIES OPERATION INSTRUCTORS FOR TRANSFORMER AND SENSOR SETUP.
5. MAXIMUM ADJUSTABLE RANGE IS 15° FROM PARALLEL TO BACK OF WALL.



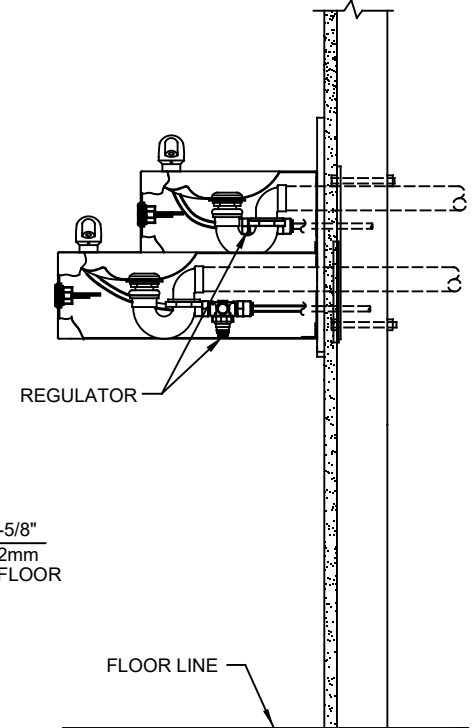
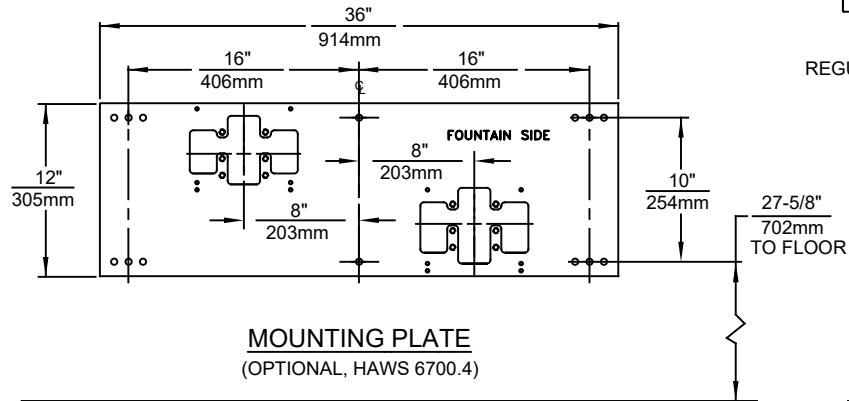
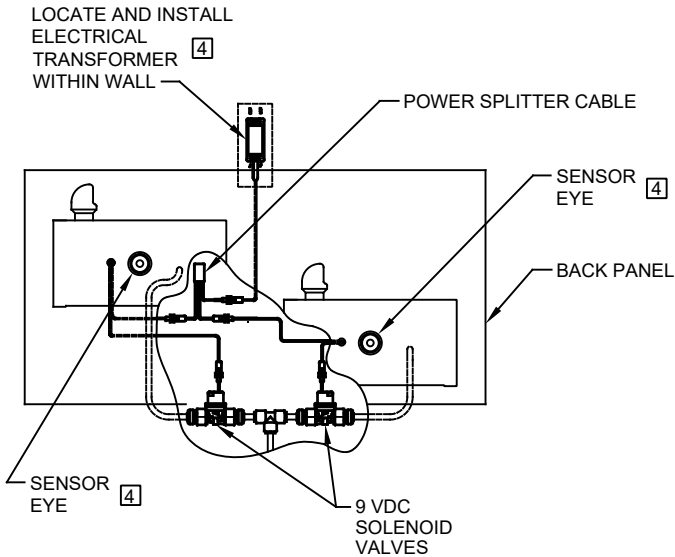
MODEL 1119.14HO SHOWN
 MODEL 1119.14HO2 ON SHEET 2
 (ROUGH-IN DIMENSIONS APPLY TO BOTH MODELS)

1455 KLEPPE LANE
 SPARKS, NEVADA 89431
 (775) 359-4712 FAX (775) 359-7424
 E-MAIL: HAWS@HAWSCO.COM
 WEBSITE: WWW.HAWSCO.COM

ECN NO. 5693		REVISED PER: ECN: 5741	BY: FV	MODEL(S)		PART NUMBER	
DRAWN: DP		DATE: 05/10/21	CHKD.: BJM	1119.14HO/1119.14HO2		0510001203.D	
APPROVED: FV		DATE: 11/12/21	SCALE: 1:14	DRAWING TYPE: INSTALLATION	SIZE: A	REVISION 2	
				SHEET 1 OF 2			



SENSOR WIRING / SUPPLY PLUMBING SCHEMATIC



MODEL 1119.14HO2 SHOWN
MODEL 1119.14HO ON SHEET 1
(SEE SHEET 1 FOR APPLICABLE ROUGH-IN DIMENSIONS)

		1455 KLEPPE LANE SPARKS, NEVADA 89431 (775) 359-4712 FAX (775) 359-7424 E-MAIL: HAWS@HAWSCO.COM WEBSITE: WWW.HAWSCO.COM	
		MODEL(S) 1119.14HO/1119.14HO2	PART NUMBER 0510001203.D REVISION 2
ECN NO. 5693 DRAWN: DP APPROVED: FV	REVISED PER: ECN: 5741 DATE: 05/10/21 DATE: 11/12/21	BY: FV CHKD.: BJM	SCALE: 1:14 DRAWING TYPE: INSTALLATION