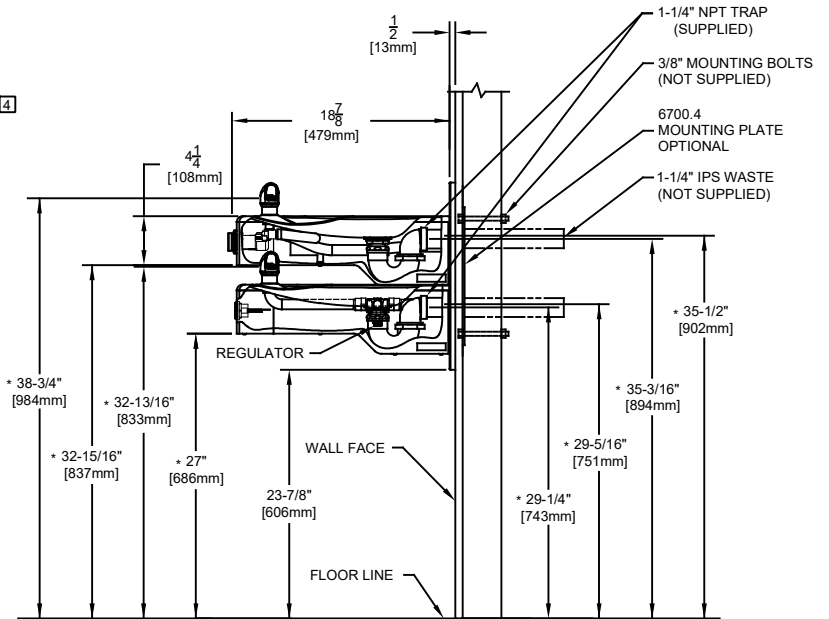
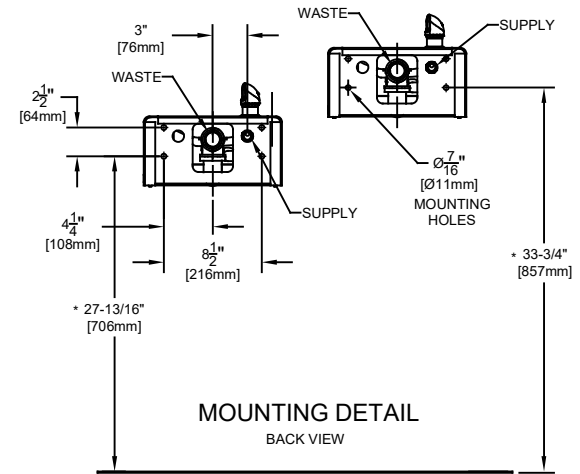
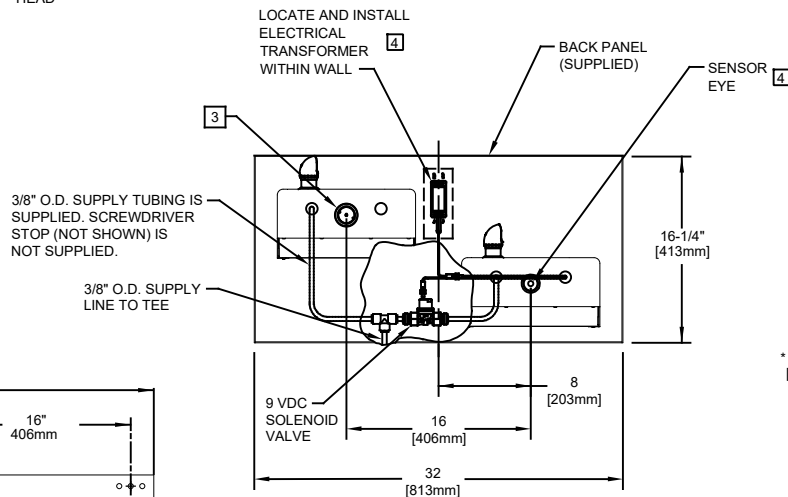
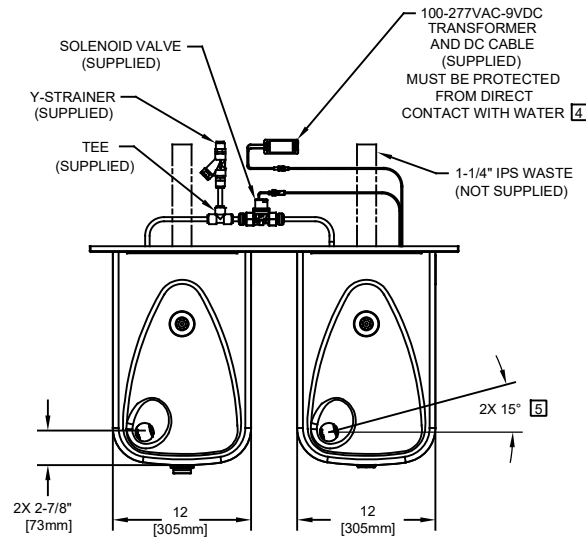
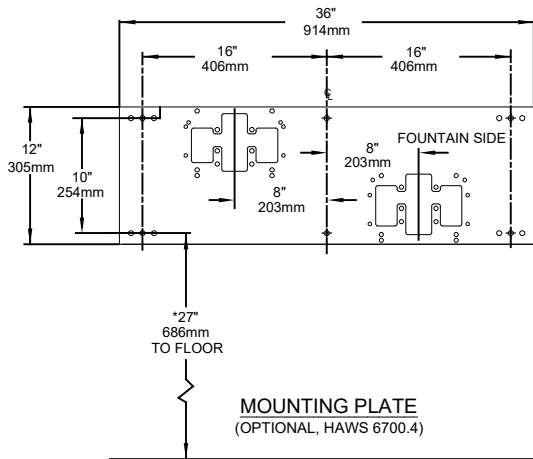
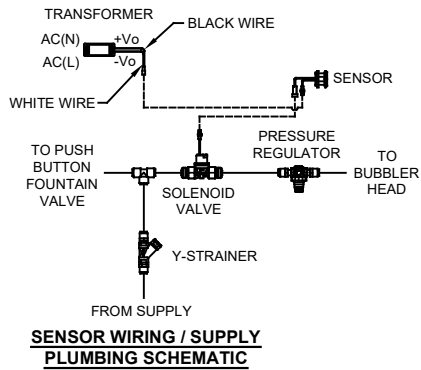


NOTES:

1. HOLD ROUGH-IN DIMENSIONS $\pm \frac{1}{8}$ " (3.2MM).
2. WHEN INSTALLING THIS UNIT, LOCAL, STATE, OR FEDERAL CODES SHOULD BE ADHERED TO. FOR INSTALLATION HEIGHTS OTHER THAN SHOWN, DIMENSIONS MARKED (*) MUST BE ADJUSTED ACCORDINGLY.
3. REFER TO 5874 SERIES OPERATION AND MAINTENANCE MANUAL FOR PUSH BUTTON AND VALVE INSTALLATION/MAINTENANCE INSTRUCTIONS.
4. REFER TO 1RKHO OR 2RKHO SERIES OPERATION INSTRUCTONS FOR TRANSFORMER AND SENSOR SETUP.
5. MAXIMUM ADJUSTABLE RANGE IS 15° FROM PARALLEL TO BACK WALL.

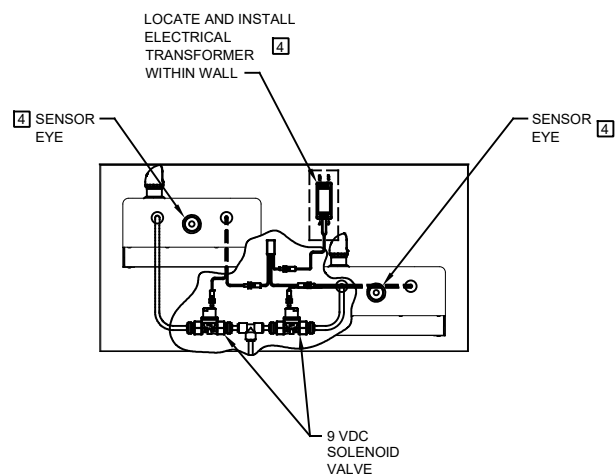
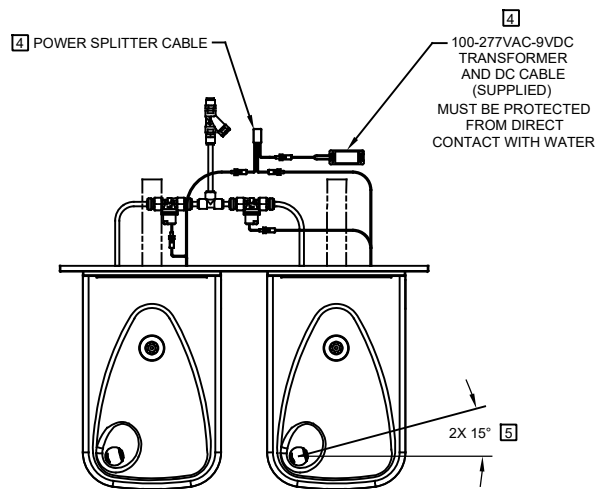


MODEL 1117LNHO SHOWN
MODEL 1117LNHO2 ON SHEET 2
(ROUGH-IN DIMENSIONS APPLY TO BOTH MODELS)
SEE SHEET 3 FOR OPTIONAL
1920/1920HO BOTTLE FILLER WATER
DISPENSER, SHOWN INSTALLED OVER
MODEL 1117LNHO /1117LNHO2

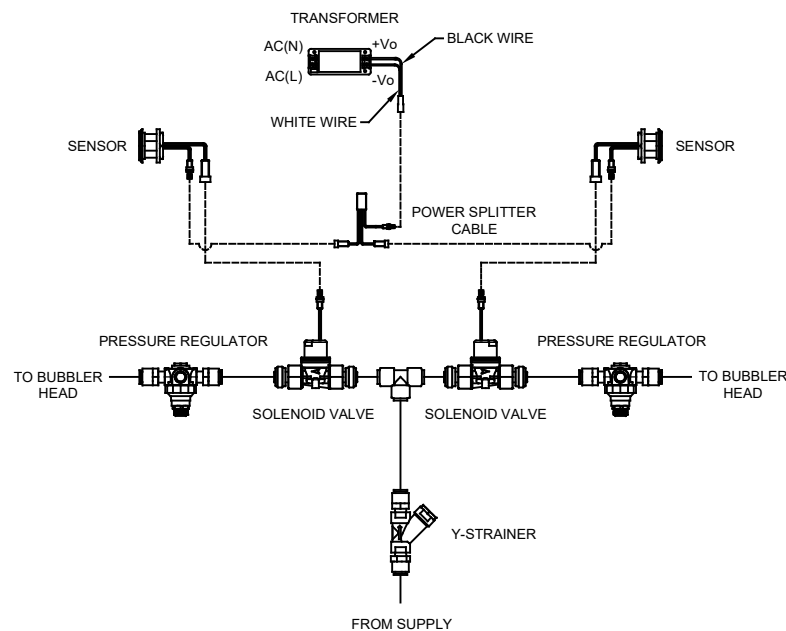


1455 KLEPPE LANE
SPARKS, NEVADA 89431
(775) 359-4712 FAX (775) 359-7424
E-MAIL: HAWS@HAWS.CO.COM
WEBSITE: WWW.HAWS.CO.COM

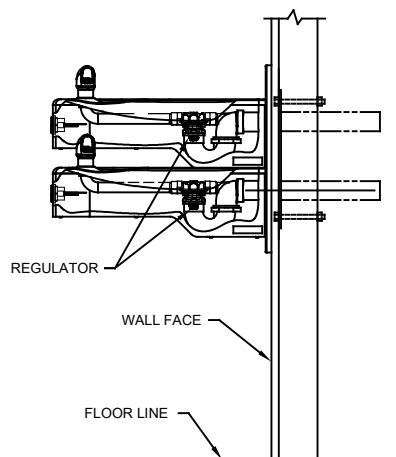
ECN NO. 5713	REVISED PER ECN: 5893	BY: FV	MODEL(S)	PART NUMBER
DRAWN: FV	DATE: 07/28/21	CHK'D: KM	1117LNHO/1117LNHO2	0510001210.D
APPROVED: FV	DATE: 09/06/23		SCALE: 1:2	REVISION 2
			DRAWING TYPE: INSTALLATION	SHEET 1 OF 3



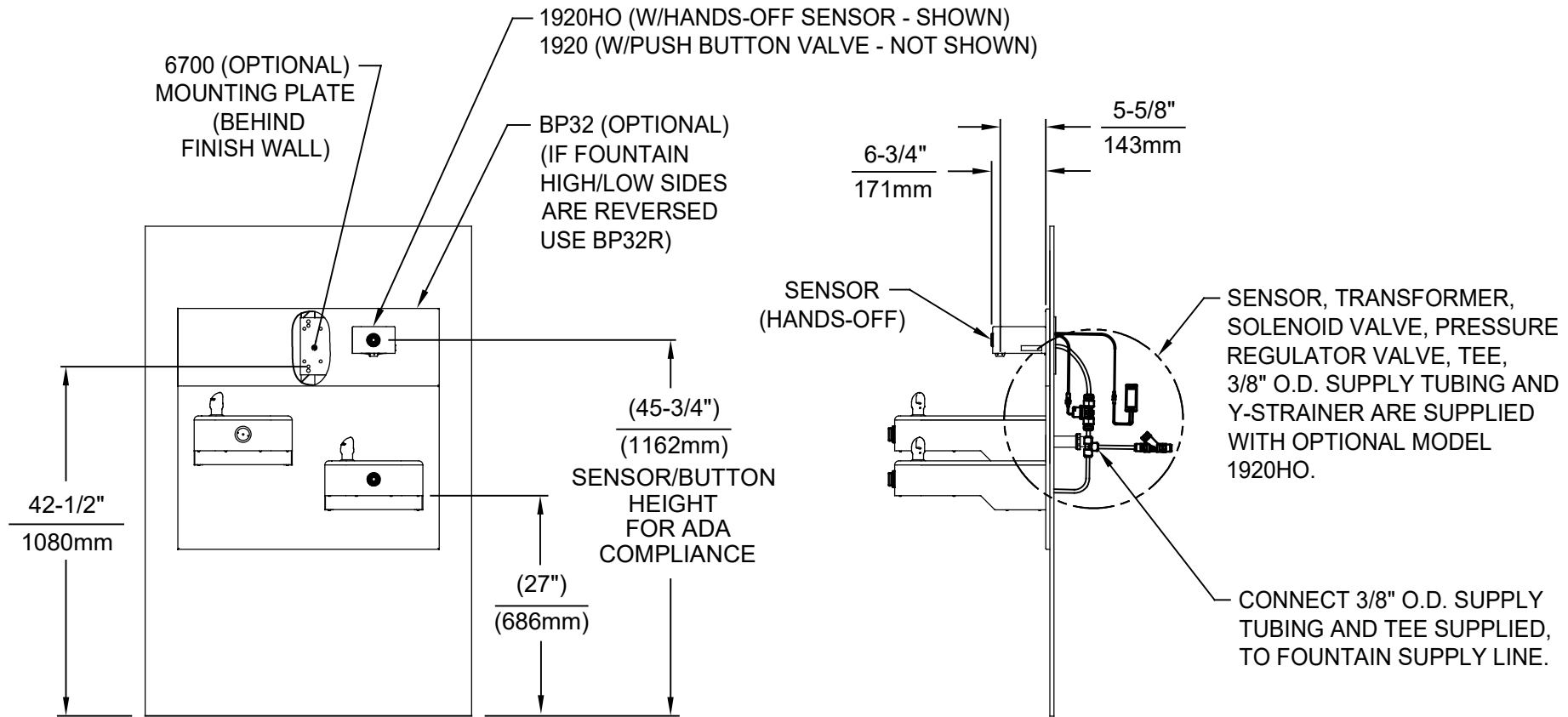
MODEL 1117LNHO2 SHOWN
MODEL 1117LNHO ON SHEET 1
(SEE SHEET 1 FOR APPLICABLE ROUGH-IN DIMENSIONS)
SEE SHEET 3 FOR OPTIONAL
1920/1920HO BOTTLE FILLER WATER
DISPENSER, SHOWN INSTALLED OVER
MODEL 1117LNHO/1117LNHO2



**SENSOR WIRING / SUPPLY
PLUMBING SCHEMATIC**



				1455 KLEPPE LANE SPARKS, NEVADA 89431 (775) 359-4712 FAX (775) 359-7424 E-MAIL: HAWS@HAWS.CO.COM WEBSITE: WWW.HAWS.CO.COM			
ECN NO. 5713	REVISED PER ECN: 5893	BY: FV	DATE: 07/28/21	CHK'D: KM	MODEL(S) 1117LNHO/1117LNHO2		PART NUMBER 0510001210.D
DRAWN: FV	DATE: 07/28/21	CHK'D: KM	APPROVED: FV	DATE: 09/06/23	SCALE: 1:2	DRAWING TYPE: INSTALLATION	REVISION 2
				SIZE: A	SHEET 2 OF 3		



OPTIONAL 1920/1920HO BOTTLE FILLER WATER DISPENSER
(1920HO SHOWN) INSTALLED OVER 1117LNHO (SHOWN)/1117LNHO2 (NOT SHOWN)
(SEE 1920 SERIES OPERATION AND MAINTENANCE MANUAL FOR COMPLETE DETAILS)
SEE SHEETS 1 & 2 FOR 1117LNHO & 1117LNHO2 ROUGH-IN DIMENSIONS

				1455 KLEPPE LANE SPARKS, NEVADA 89431 (775) 359-4712 FAX (775) 359-7424 E-MAIL: HAWS@HAWS.CO.COM WEBSITE: WWW.HAWS.CO.COM			
ECN NO. 5893	REVISED PER ECN: 5893	BY: FV	MODEL(S)		PART NUMBER		
DRAWN: FV	DATE: 07/31/23	CHK'D: KM	1117LNHO/1117LNHO2		0510001210.D		
APPROVED: FV	DATE: 09/06/23			REVISION	2		
SCALE: N/A			DRAWING TYPE:	INSTALLATION	SIZE: A	SHEET 3 OF 3	