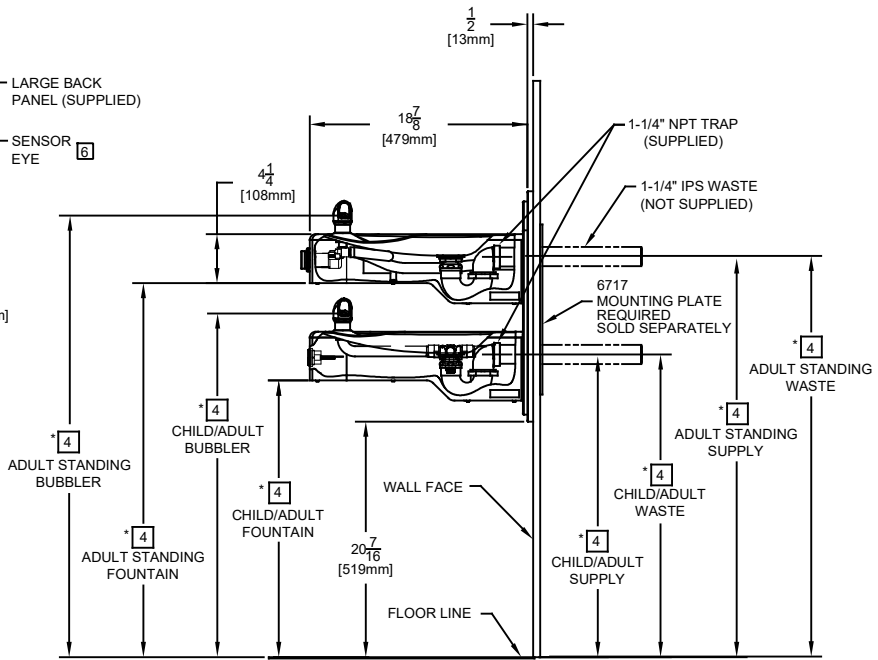
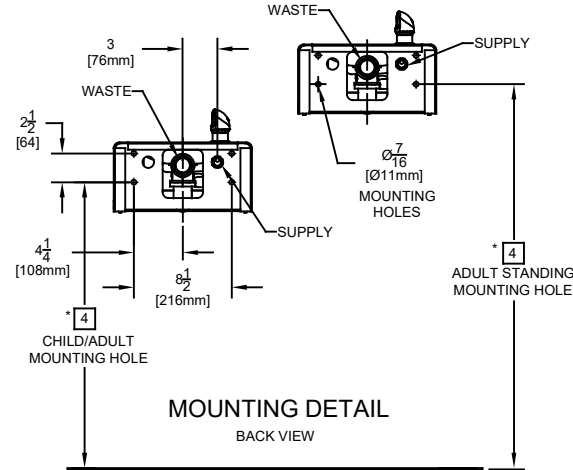
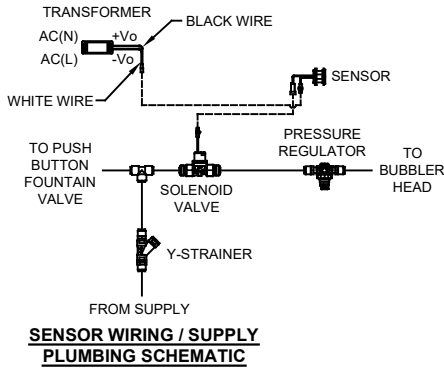
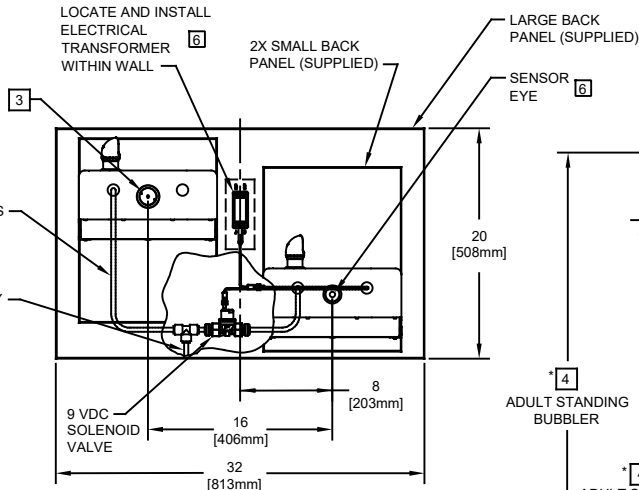
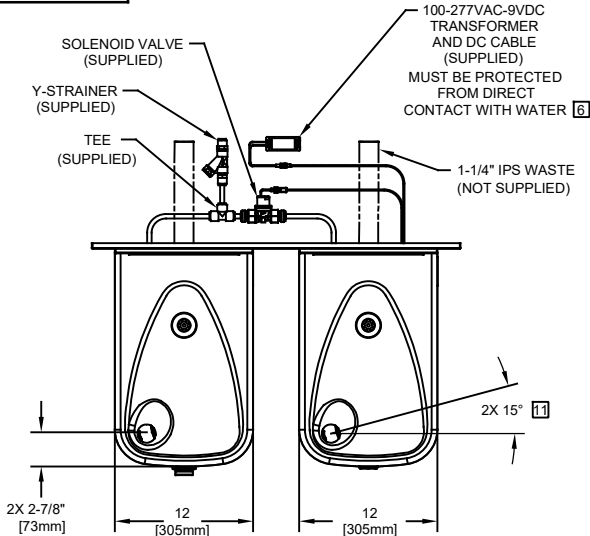
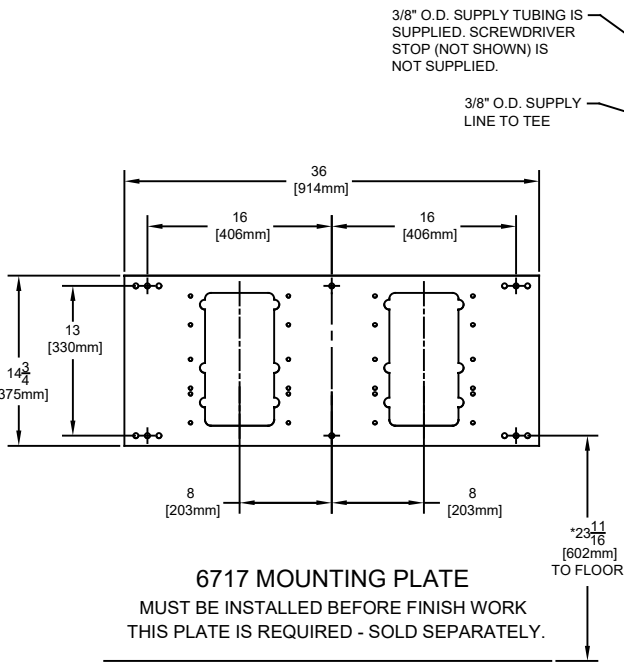


NOTES:

1. HOLD ROUGH-IN DIMENSIONS  $\pm \frac{1}{8}$ " (3.2MM).
2. WHEN INSTALLING THIS UNIT, LOCAL, STATE, OR FEDERAL CODES SHOULD BE ADHERED TO. FOR INSTALLATION HEIGHTS OTHER THAN SHOWN, DIMENSIONS MARKED (\*) MUST BE ADJUSTED ACCORDINGLY.
3. REFER TO 5874 SERIES OPERATION AND MAINTENANCE MANUAL FOR PUSH BUTTON AND VALVE INSTALLATION/MAINTENANCE INSTRUCTIONS.
4. ROUGH IN DIMENSIONS FOR FOUNTAIN HEIGHTS:  
CHILD WHEELCHAIR HEIGHT: SEE SHT 3 FIG 1  
WASTE: 26-1/4" (667mm)  
SUPPLY: 26-1/8" (664mm)  
MOUNTING HOLE: 24-13/16" (630mm)  
FOUNTAIN: 24" (610mm)  
BUBBLER: 29-7/8" (756mm)  
  
ADULT WHEELCHAIR HEIGHT: SEE SHT 3 FIG 2  
WASTE: 29-1/4" (743mm)  
SUPPLY: 29-1/8" (740mm)  
MOUNTING HOLE: 27-13/16" (706mm)  
FOUNTAIN: 27" (686mm)  
BUBBLER: 32-7/8" (832mm)  
  
STANDING ADULT HEIGHT: SEE SHT 3 FIG 3  
WASTE: 34-3/4" (883mm)  
SUPPLY: 34-5/8" (879mm)  
MOUNTING HOLE: 33-5/16" (846mm)  
FOUNTAIN: 32-1/2" (826mm)  
BUBBLER: 38-3/8" (972mm)
5. REFER TO MODEL 1117LHO INSTALLATION DRAWING SHEET 3 OF 3 (ON HAWS WEBSITE [WWW.HAWSCO.COM](http://WWW.HAWSCO.COM)) FOR PERMISSABLE BOWL MOUNTING PATTERNS. **TWO WHEELCHAIR HEIGHT FOUNTAINS CANNOT BE MOUNTED SIDE BY SIDE PER ANSI A117.1.**
6. REFER TO 1RKHO OR 2RKHO SERIES OPERATION INSTRUCTORS FOR TRANSFORMER AND SENSOR SETUP.

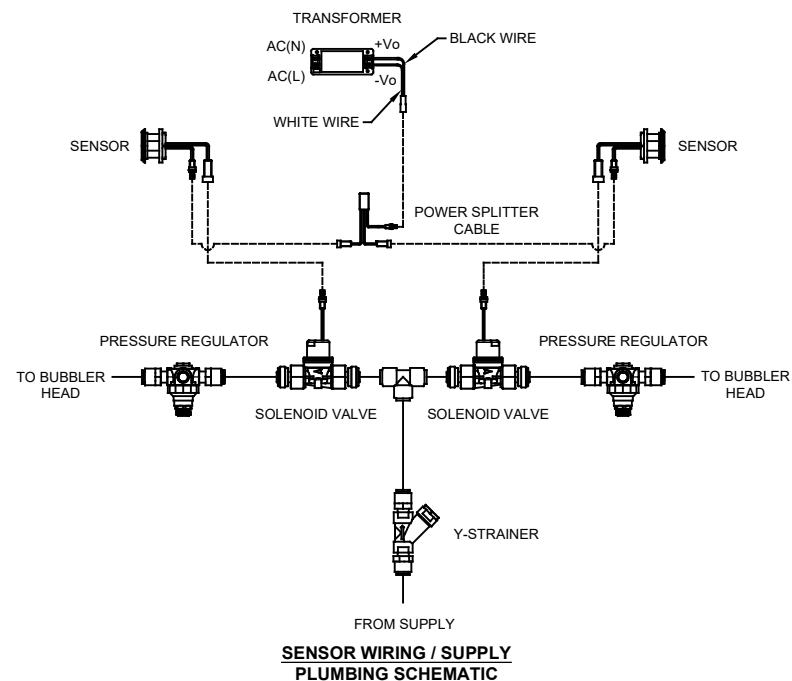
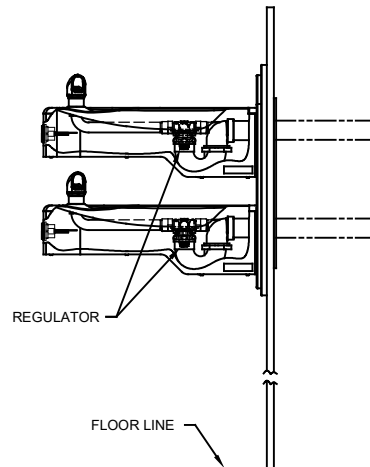
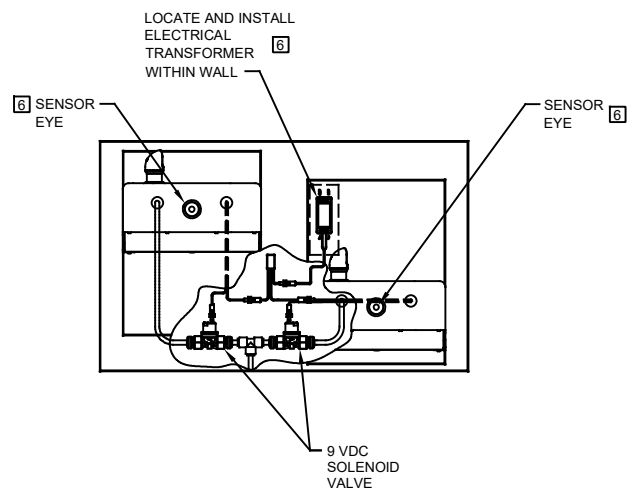
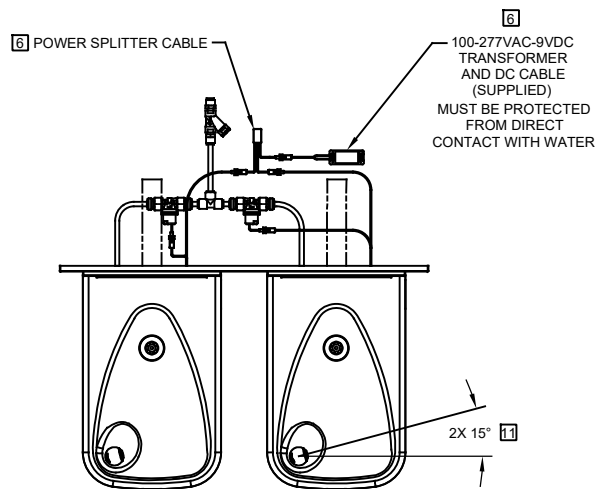
NOTES CONTINUED ON SHEET 3 OF 3



MODEL 1117LHO SHOWN  
MODEL 1117LHO2 ON SHEET 2  
(ROUGH-IN DIMENSIONS APPLY TO BOTH MODELS)

1455 KLEPPE LANE  
SPARKS, NEVADA 89431  
(775) 359-4712 FAX (775) 359-7424  
E-MAIL: [HAWS@HAWSCO.COM](mailto:HAWS@HAWSCO.COM)  
WEBSITE: [WWW.HAWSCO.COM](http://WWW.HAWSCO.COM)

ECN NO. 5712	REVISED PER BY: ECN: 5893 FV	MODEL(S) 1117LHO/1117LHO2	PART NUMBER 0510001209.D
DRAWN: FV	DATE: 07/21/21	CHK'D: KM	REVISION 2
APPROVED: FV	DATE: 09/06/23	SCALE: 1:2	DRAWING TYPE: INSTALLATION
		SIZE: A	SHEET 1 OF 3

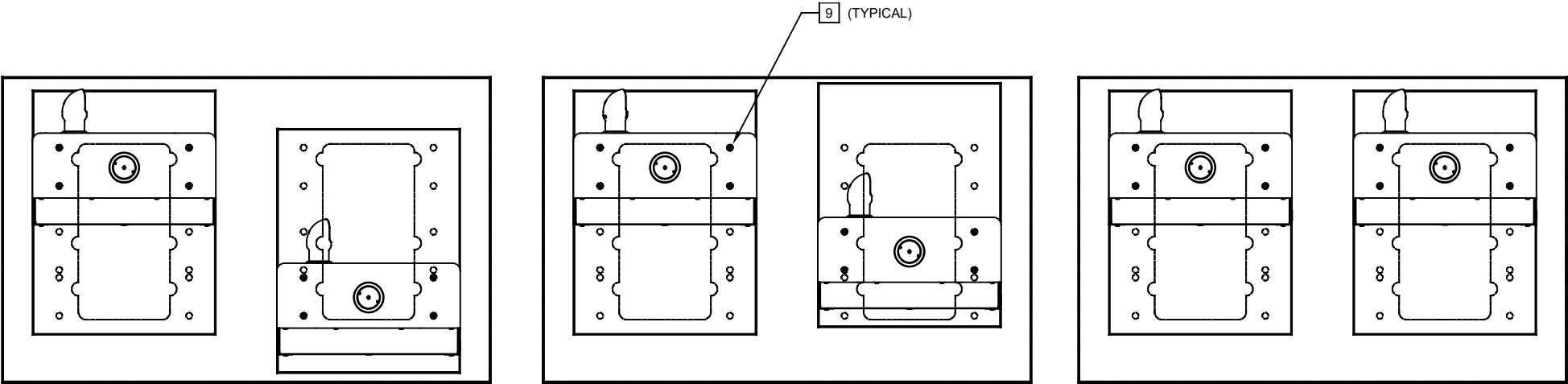


MODEL 1117LHO2 SHOWN  
MODEL 1117LHO ON SHEET 1  
(SEE SHEET 1 FOR APPLICABLE ROUGH-IN DIMENSIONS)

		<b>Haws®</b>		1455 KLEPPE LANE SPARKS, NEVADA 89431 (775) 359-4712 FAX (775) 359-7424 E-MAIL: HAWS@HAWS.CO.COM WEBSITE: WWW.HAWS.CO.COM	
				PART NUMBER 0510001209.D	
ECN NO. 5712	REVISED PER ECN: 5893	BY: FV	MODEL(S)  1117LHO/1117LHO2		REVISION 2
DRAWN: FV	DATE: 07/21/21	CHK'D: KM			SCALE: 1:2
APPROVED: FV	DATE: 09/06/23			SHEET 2 OF 3	

NOTES:

- 8 FIGURES 1 AND 2 ARE REVERSIBLE. CAN BE RIGHT OR LEFT SIDE HIGH.
- 9 USE SHADED HOLES TO MOUNT AT INDICATED POSITIONS BASED ON COMBINATION SELECTED (FIGS. 1 THRU 3).
- 10 MAXIMUM ADJUSTABLE RANGE IS 15° FROM PARALLEL TO BACK WALL.
- 11. REFER TO SHEET 1 OF 3, NOTE 4, FOR INSTALLED FOUNTAIN DIMENSIONS.




8  
FIGURE 1.  
ADULT STANDING/CHILD WHEELCHAIR

8  
FIGURE 2.  
ADULT STANDING/ADULT WHEELCHAIR

FIGURE 3.  
ADULT STANDING/ADULT STANDING

BOWL MOUNTING PATTERNS



1455 KLEPPE LANE  
SPARKS, NEVADA 89431  
(775) 359-4712 FAX (775) 359-7424  
E-MAIL: HAWS@HAWS.CO.COM  
WEBSITE: WWW.HAWS.CO.COM

ECN NO. 5712	REVISED PER ECN: 5893	BY: FV	MODEL(S)	PART NUMBER
DRAWN: FV	DATE: 07/21/21	CHK'D: KM	1117LHO/1117LHO2	0510001209.D
APPROVED: FV	DATE: 09/06/23			REVISION 2
SCALE: 1:2			DRAWING TYPE: INSTALLATION	SIZE: A SHEET 3 OF 3