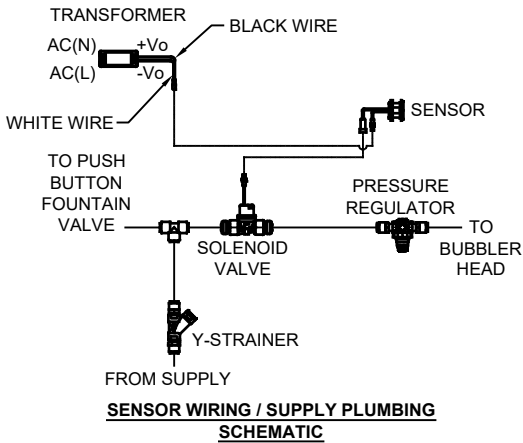
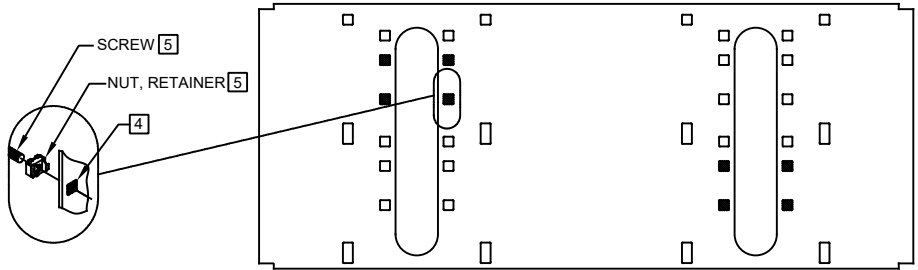


NOTES:

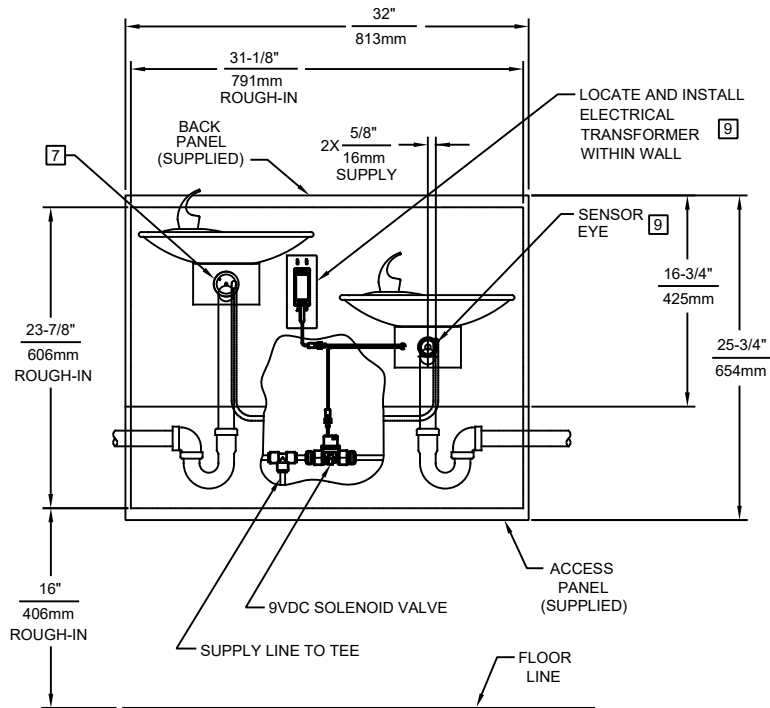
- 1. HOLD ROUGH-IN DIMENSIONS $\pm 1/8"$ (3.2mm).
- 2. WHEN INSTALLING THIS UNIT, LOCAL, STATE, OR FEDERAL CODES SHOULD BE ADHERED TO FOR DIMENSIONS (LOCATIONS), WASTE AND SUPPLY REQUIREMENTS OTHER THAN SHOWN.
- 3. INSTALLER MUST PROVIDE TRAP (NOT SUPPLIED) FOR PROPER INSTALLATION.
- 4. HOLE COMBINATION SHOWN IS FOR USE WITH LOW FOUNTAIN ON THE RIGHT AND HIGH FOUNTAIN ON THE LEFT. USE OPPOSITE HOLES FOR HIGH ON RIGHT AND LOW ON LEFT.
- 5. TO CHANGE FOUNTAIN MTG. SCREW LOCATIONS: FIRST REMOVE SCREWS AND THEN SQUEEZE CLIPS ON NUT RETAINER TO POP OUT. SNAP INTO NEW POSITIONS FROM BACKSIDE AND RE-ASSEMBLE SCREWS.
- 6. IMPORTANT: A L.H. LOW (OPTIONAL) CONFIGURATION WILL REQUIRE A DIFFERENT BACK PANEL AND THE WASTE AND SUPPLY DIMENSIONS SHOWN (*) MUST BE REVERSED.
- 7. REFER TO 5874 SERIES OPERATION AND MAINTENANCE MANUAL FOR PUSH BUTTON AND VALVE INSTALLATION/MAINTENANCE INSTRUCTIONS.
- 8. REMOVE VALVE FROM PUSH BUTTON TO INSTALL WASTE ELBOW ONTO BOWL. AFTER WASTE ELBOW IS INSTALLED, REINSTALL VALVE AND ADJUST FLOW.
- 9. REFER TO 1RKHO.H & 2RKHO.H OPERATION AND MAINTENANCE INSTRUCTIONS FOR TRANSFORMER AND SENSOR SETUP.




MODEL 1011MSHO SHOWN
MODEL 1011MSHO2 ON SHEET 3
(ROUGH-IN DIMENSIONS APPLY TO BOTH MODELS)



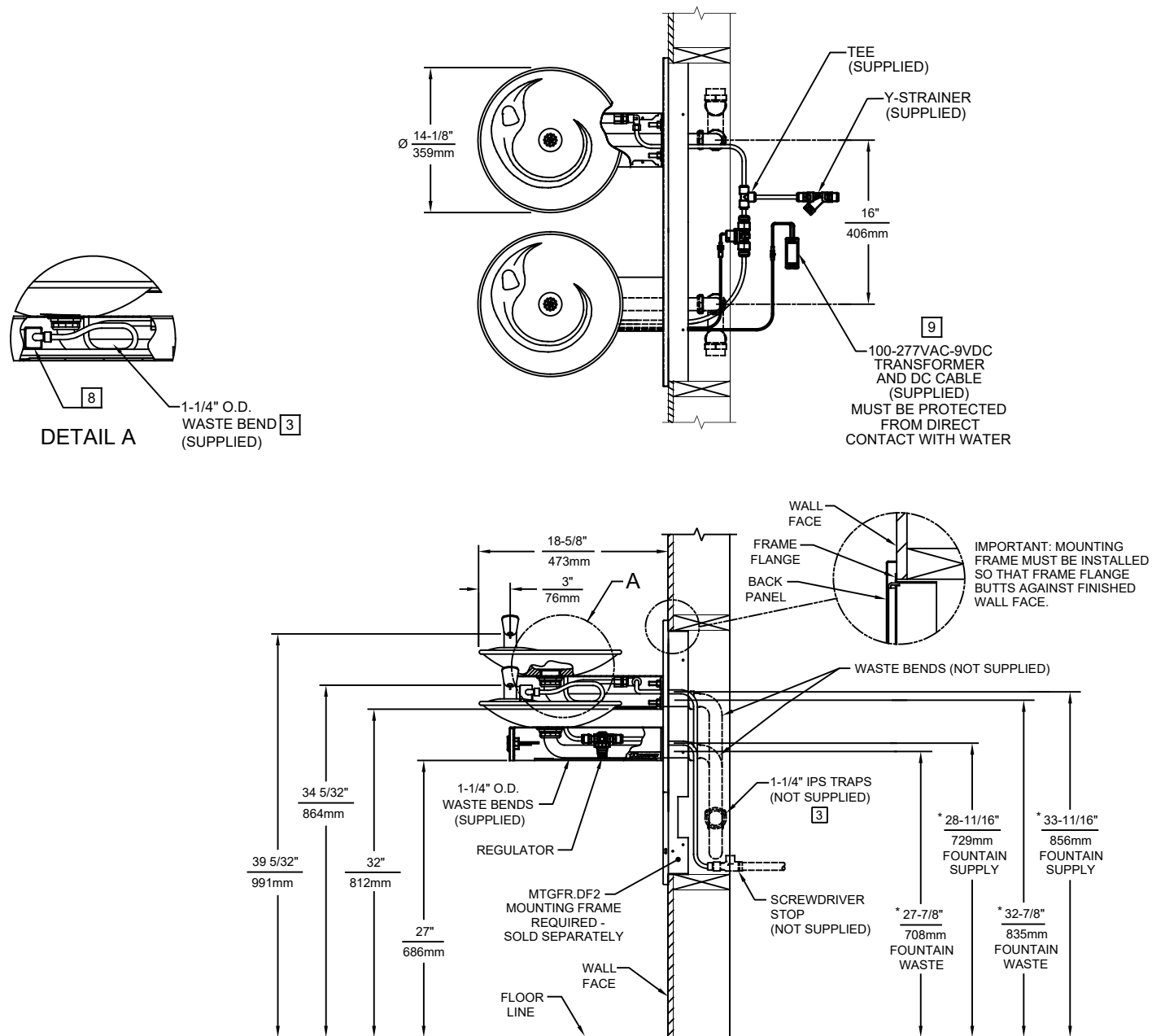
BOWL MOUNTING PATTERN DETAIL






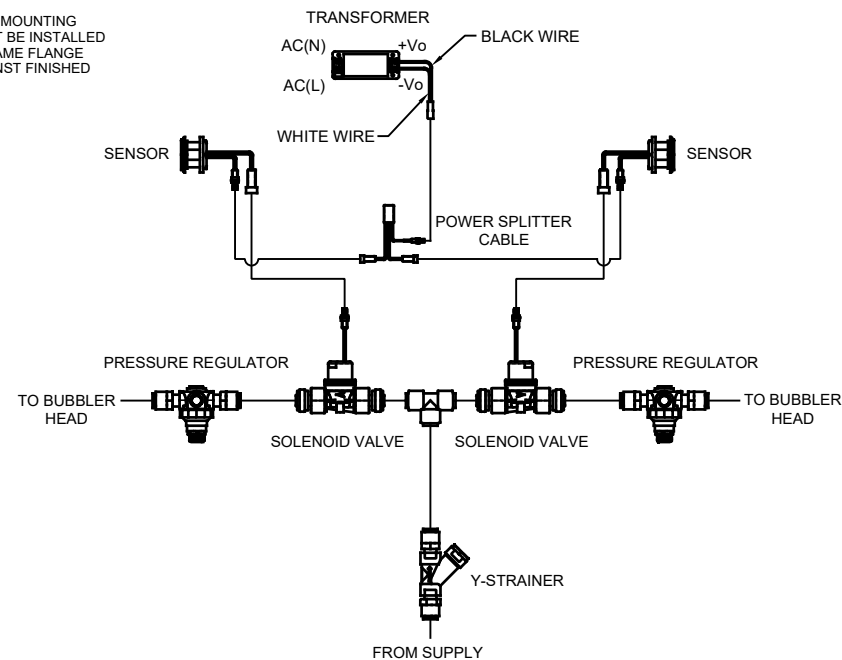
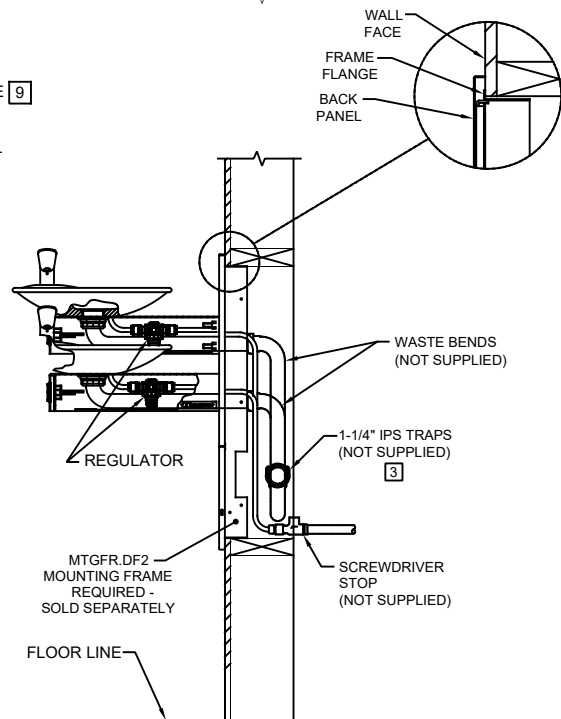
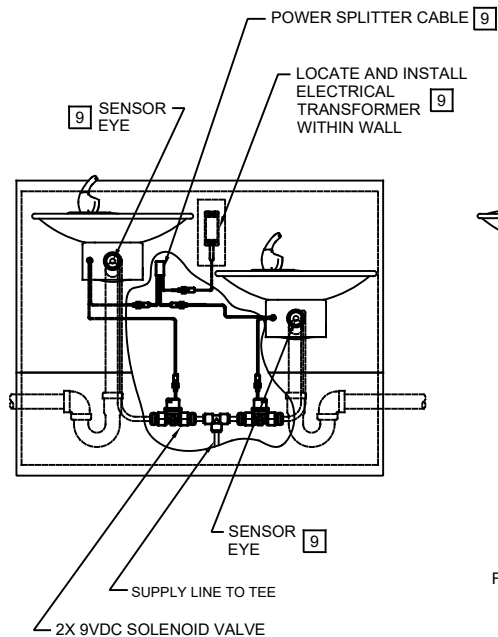
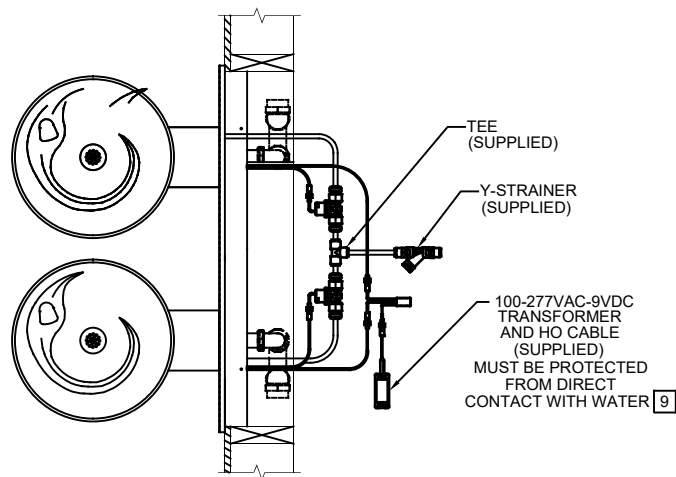
1455 KLEPPE LANE
SPARKS, NEVADA 89431
(775) 359-4712 FAX (775) 359-7424
E-MAIL: HAWS@HAWS.CO.COM
WEBSITE: WWW.HAWS.CO.COM

ECN NO. 5701	REVISED PER ECN: 5701	BY: FV	MODEL(S) 1011MSHO/1011MSHO2	PART NUMBER 0510001206.D
DRAWN: FV	DATE: 05/27/21	CHK'D: DP		REVISION 1
APPROVED: FV	DATE: 06/02/21	SCALE: 1:16	DRAWING TYPE: INSTALLATION	SIZE: A SHEET 1 OF 3



MODEL 1011MSHO SHOWN
MODEL 1011MSHO2 ON SHEET 3
(ROUGH-IN DIMENSIONS APPLY TO BOTH MODELS)

				1455 KLEPPE LANE SPARKS, NEVADA 89431 (775) 359-4712 FAX (775) 359-7424 E-MAIL: HAWS@HAWS.CO.COM WEBSITE: WWW.HAWS.CO.COM			
ECN NO. 5701	REVISED PER ECN: 5701	BY: FV	MODEL(S)	1011MSHO/1011MSHO2			PART NUMBER 0510001206.D
DRAWN: FV	DATE: 05/31/21	CHKD.: DP				REVISION 1	
APPROVED: FV	DATE: 06/02/21	SCALE: 1:16	DRAWING TYPE:	INSTALLATION	SIZE: A	SHEET 2 OF 3	



SENSOR WIRING / SUPPLY PLUMBING SCHEMATIC

MODEL 1011MSHO2 SHOWN
MODEL 1011MSHO ON SHEETS 1 AND 2
(SEE SHEETS 1 AND 2 FOR APPLICABLE ROUGH-IN DIMENSIONS)

				1455 KLEPPE LANE SPARKS, NEVADA 89431 (775) 359-4712 FAX (775) 359-7424 E-MAIL: HAWS@HAWS.CO.COM WEBSITE: WWW.HAWS.CO.COM			
ECN NO. 5701	REVISED PER ECN: 5701	BY: FV	DATE: 06/01/21	CHK'D: DP	MODEL(S) 1011MSHO/1011MSHO2		PART NUMBER 0510001206.D
APPROVED: FV	DATE: 06/02/21	SCALE: 1:1		DRAWING TYPE: INSTALLATION		SIZE: A	SHEET 3 OF 3