



model 1441HO

ADA Vandal-Resistant Aluminum Motion-Activated Fountain

FEATURES & BENEFITS

CONSTRUCTION

Cast aluminum bowl with integral mounting brackets along with a powder-coated finish combine for a strong long lasting product, while a vandal-resistant bottom plate discourages unwanted access.

INTEGRATED TRAP

All cast brass 1-1/4" NPT adjustable traps completely concealed inside bottom plates for easy installation and lack of unwanted access.

QUALITY CONTROL

Pre-built fountain is pressure tested to ensure no leaks and proper functionality.

BUBBLER HEADS

Polished chrome-plated brass bubbler head with integral 1 1/16" dia. basin shank and stainless anti-rotation roll pin for vandal resistance strength. Shielded, angled stream opening provides a steady, sanitary source of drinking water at .45 gpm.

FOUNTAIN VALVES

Fountain incorporates touchless sensor operated stainless steel solenoid valves controlled by a transformer for hands-free operation. A pressure regulator is used to adjust the bubbler flow according to incoming water pressures.

VANDAL-RESISTANT

The bubbler heads, drain strainer and bottom plate are locked in place, discouraging unwanted vandal tampering.



SPECIFICATIONS

Model 1441HO wall mounted vandal-resistant, wheelchair accessible motion-activated drinking fountain shall include a white powder-coated cast aluminum basin with integral mounting brackets, touchless sensor operated stainless steel solenoid valves with 30-second obstruction time-out controlled by a transformer, 100% lead-free waterways, dual polished chrome-plated brass vandal-resistant bubbler heads, polished chrome-plated brass vandal-resistant waste strainer, vandal-resistant bottom plate, and chrome-plated 1-1/2" NPT trap.

FOR INDOOR USE ONLY

OPTIONS

Support Frame: Model 6800 universal in-wall mounting support for use with most fountains.

Mounting Plate: Model 6710, in-wall mounting plate for model 1441HO.

Water Filter: Model 6426, 10" x 2" (25.4 x 5.1 cm), in-line lead removal element that reduces lead from incoming water supply.

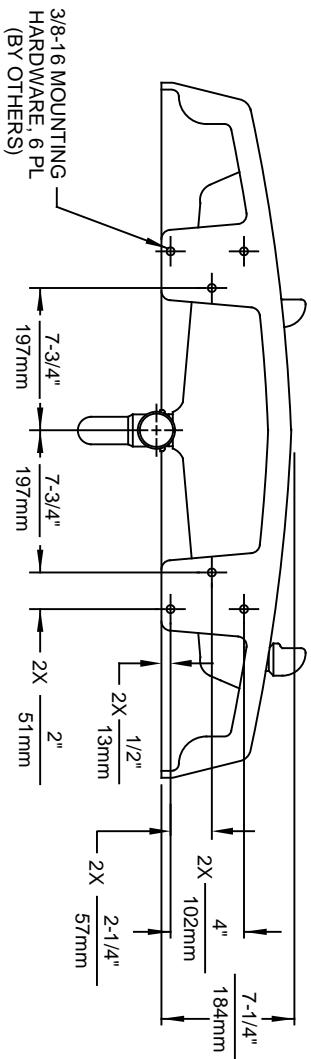
Bottle filler: Model 1920WHO, bottle filler can be a stand-alone station, or mounted above Haws 1441.

For more information, visit www.hawsc.com or call (888) 640-4297.

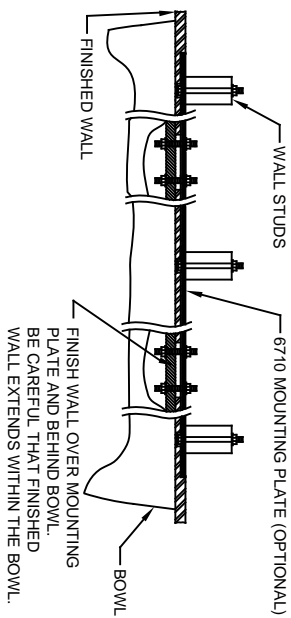
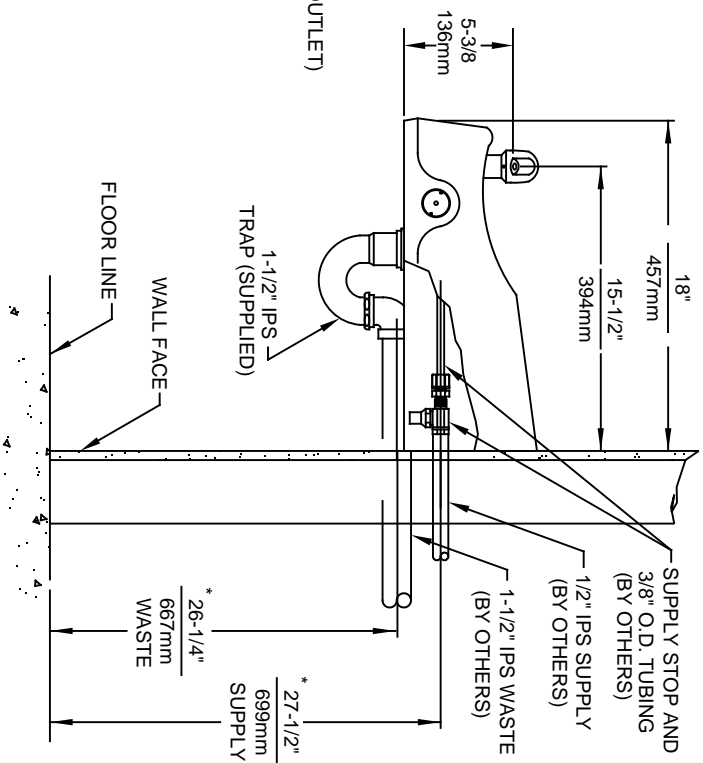
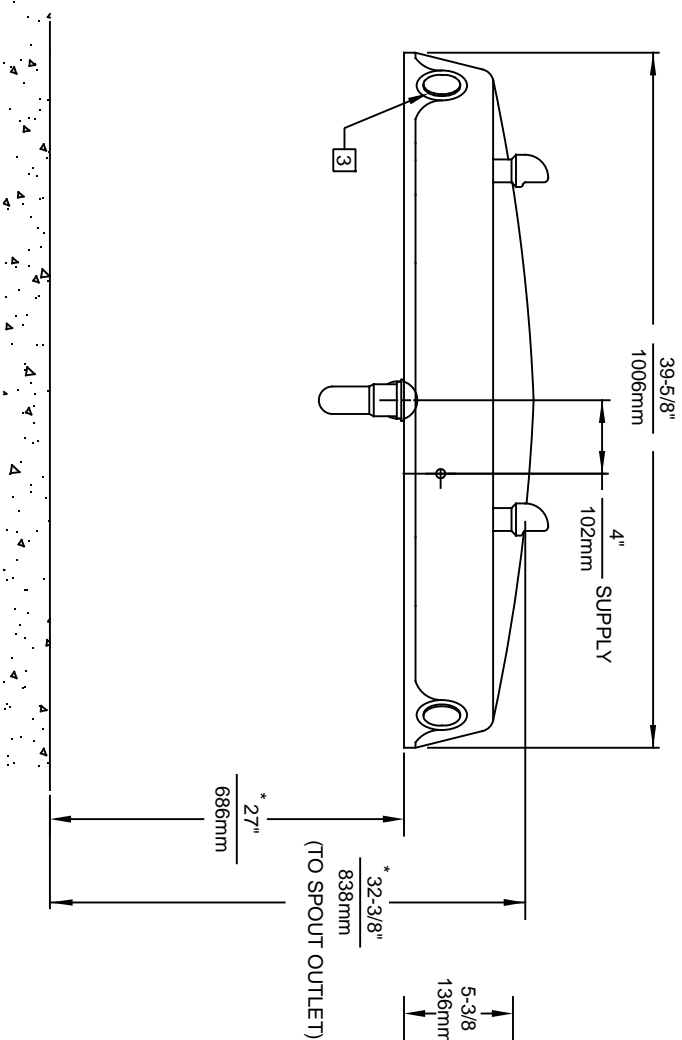
APPLICATIONS

Perfect for either public or private settings, our cast aluminum series is a great fit for any indoor/outdoor environment. This wheelchair accessible unit is the perfect fit for high traffic areas where there is a greater need for multiple drinking stations. Powder-coated finish helps maintain the fountain's overall appeal so it always remains looking as new as it did when it was installed. Specifically, this type of wall mounted drinking fountain may be placed in settings such as: parks, schools, and other environments where the temperature remains above freezing. Haws manufactures drinking fountains, faucets and electric water coolers to be lead-free by all known definitions including NSF/ANSI/CAN 61- Section 9, NSF/ANSI/CAN 372, California Proposition 65, and the Federal Safe Drinking Water Act. Product is compliant to California Health and Safety Code 116875 (AB 1953-2006), and NSF/ANSI/CAN 61: Q ≤ 1.





MOUNTING DETAIL



- NOTES:
- HOLD ROUGH-IN DIMENSIONS $\pm 1/4"$ (6.4mm).
 - WHEN INSTALLING THIS UNIT, LOCAL, STATE, OR FEDERAL CODES SHOULD BE ADHERED TO. FOR INSTALLATION HEIGHTS OTHER THAN SHOWN, DIMENSIONS MARKED (*) MUST BE ADJUSTED ACCORDINGLY.
 - REFER TO 5874 SERIES OPERATION AND MAINTENANCE MANUAL FOR PUSH BUTTON AND VALVE INSTALLATION/MAINTENANCE INSTRUCTIONS.



1456 KLEPPE LANE
SPARKS, NEVADA, 89431
(775) 359-4712 FAX (775) 359-7424
E-MAIL: HAWS@HAWS.CO.COM
WEBSITE: WWW.HAWS.CO.COM

ECN NO. REVISED PER BY:	MODEL(S)	1441
DRAWN: CHAVES	DATE: 09/01/92	CHK'D: VWC
APPROVED: FV	DATE: 02/06/17	SCALE: 1:10
DRAWING TYPE: INSTALLATION		
SIZE: A SHEET 1 OF 1		
PART NUMBER: 0002076867.D		
REVISION: 19		