



# Haws®

# model 1430HO-1920WHO

Vandal-Resistant Enameled Iron Motion-Activated Fountain and Bottle Filler

## FEATURES & BENEFITS

### CONSTRUCTION

Heavy-duty cast iron bowl with a glossy white enamel finish is designed for the toughest of applications, and at the same time is gentle to all users with its soft rounded corners. Unit also ships with vandal-resistant bottom plates to provide added peace of mind.

### INTEGRATED TRAP

All cast brass 1-1/4" NPT adjustable traps completely concealed inside bottom plates for easy installation and lack of unwanted access.

### DUAL ACCESS

Low profile design and dual bubbler performance is a great addition to high traffic situations.

### BUBBLER HEADS

Polished chrome-plated brass bubbler heads with integral 11/16" dia. basin shank and stainless anti-rotation roll pin for vandal resistance strength. Shielded, angled stream opening provides a steady, sanitary source of drinking water at .45 gpm.

### FOUNTAIN VALVES

Fountain incorporates touchless sensor operated stainless steel solenoid valves controlled by a transformer for hands-free operation. A pressure regulator is used to adjust the bubbler flow according to incoming water pressures.

### BOTTLE FILLER

14-gauge Type 304 stainless steel bottle filler housing with touchless operation and 1 gpm (3.78 L) laminar flow with 30-second obstruction time-out.

### VANDAL-RESISTANT

The bubbler heads, drain strainer and bottom plates are locked in place, discouraging unwanted vandal tampering.

## OPTIONS

Mounting Plate: Model 6700, in-wall mounting plate for model 1920WHO.

Remote Drinking Fountain Water chiller: Model HCR8, 8 gph (30.3 L) remote water chiller provides instantaneous cooling to meet a continuous demand for chilled water.

Water Filter: Model 6426, 10" x 2" (25.4 x 5.1 cm), in-line lead removal element that reduces lead from incoming water supply.

For more information, visit [www.hawsc.com](http://www.hawsc.com) or call (888) 640-4297.



## MODELS REQUIRED

### 1430HO / 1920WHO

Order these items to make up the Model 1430HO-1920WHO white enameled-iron fountain and white painted stainless steel bottle filler

**FOR INDOOR USE ONLY**

## SPECIFICATIONS

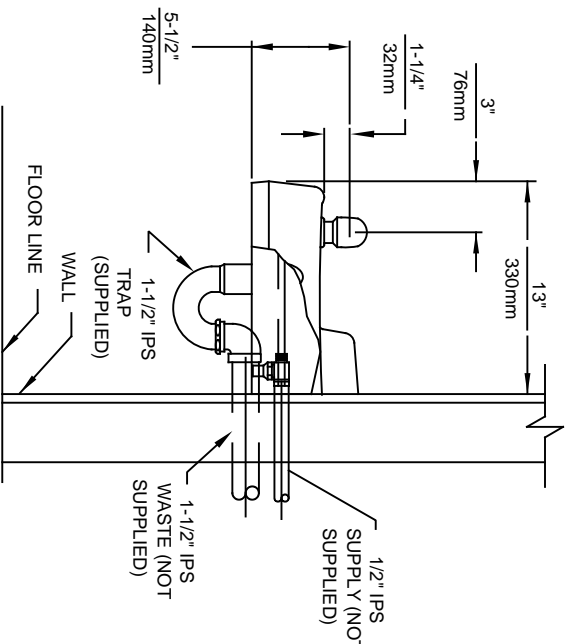
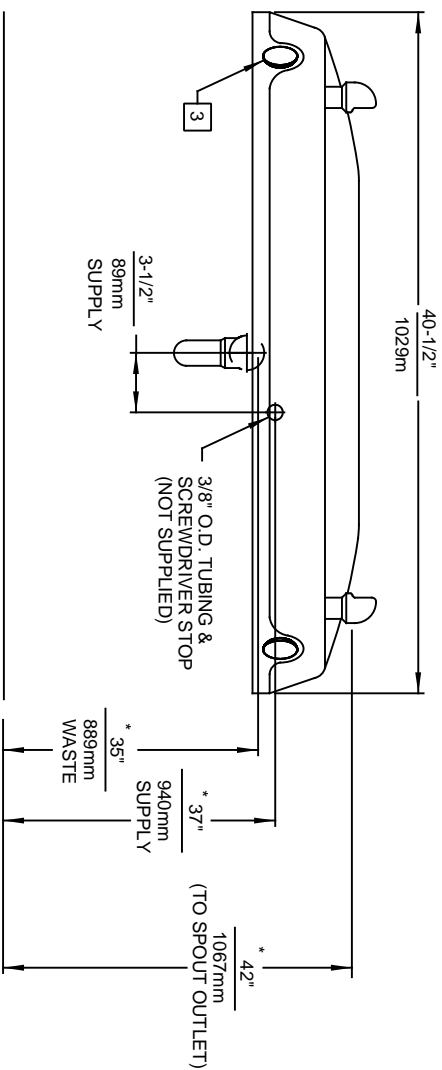
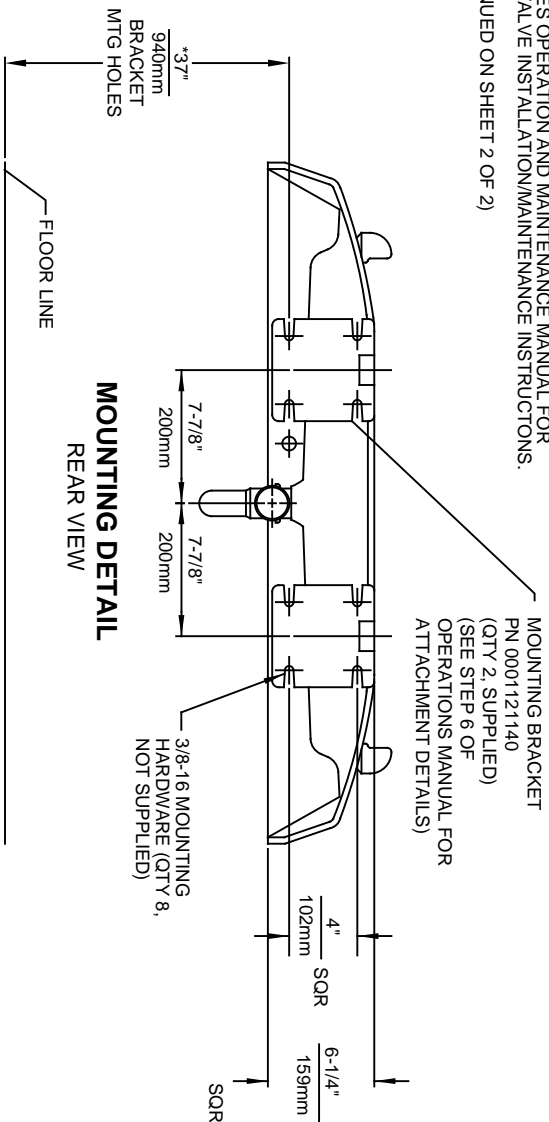
Model 1430HO-1920WHO vandal-resistant wall mounted motion-activated drinking fountain and bottle filler shall include a white enameled-iron basin mounted with twin galvanized cast-iron wall brackets, touchless sensor operated stainless steel solenoid valves with 30-second obstruction time-out controlled by a transformer, 100% lead-free waterways, dual polished chrome plated brass vandal-resistant bubbler heads, polished chrome plated brass vandal-resistant waste strainer, vandal-resistant bottom plate, and chrome-plated 1-1/2" NPT trap. Manufactured to be lead-free by all known definitions including NSF/ ANSI/CAN 61-Section 9, NSF/ANSI/CAN 372, California Proposition 65, and the Federal Safe Drinking Water Act. Product is compliant to California Health and Safety Code 116875 (AB 1953-2006), and NSF/ ANSI/CAN 61: Q ≤ 1.



**NOTES:**

1. ROUGH-IN DIMENSIONS MAY VARY ±1/4" (6.4mm).
2. WHEN INSTALLING THIS UNIT LOCAL, STATE OR FEDERAL CODES SHOULD BE ADHERED TO. FOR INSTALLATION HEIGHTS OTHER THAN SHOWN, DIMENSIONS MARKED (\*) MUST BE ADJUSTED ACCORDINGLY.
3. REFER TO 5874 SERIES OPERATION AND MAINTENANCE MANUAL FOR PUSH BUTTON AND VALVE INSTALLATION/MAINTENANCE INSTRUCTIONS.

(NOTES CONTINUED ON SHEET 2 OF 2)



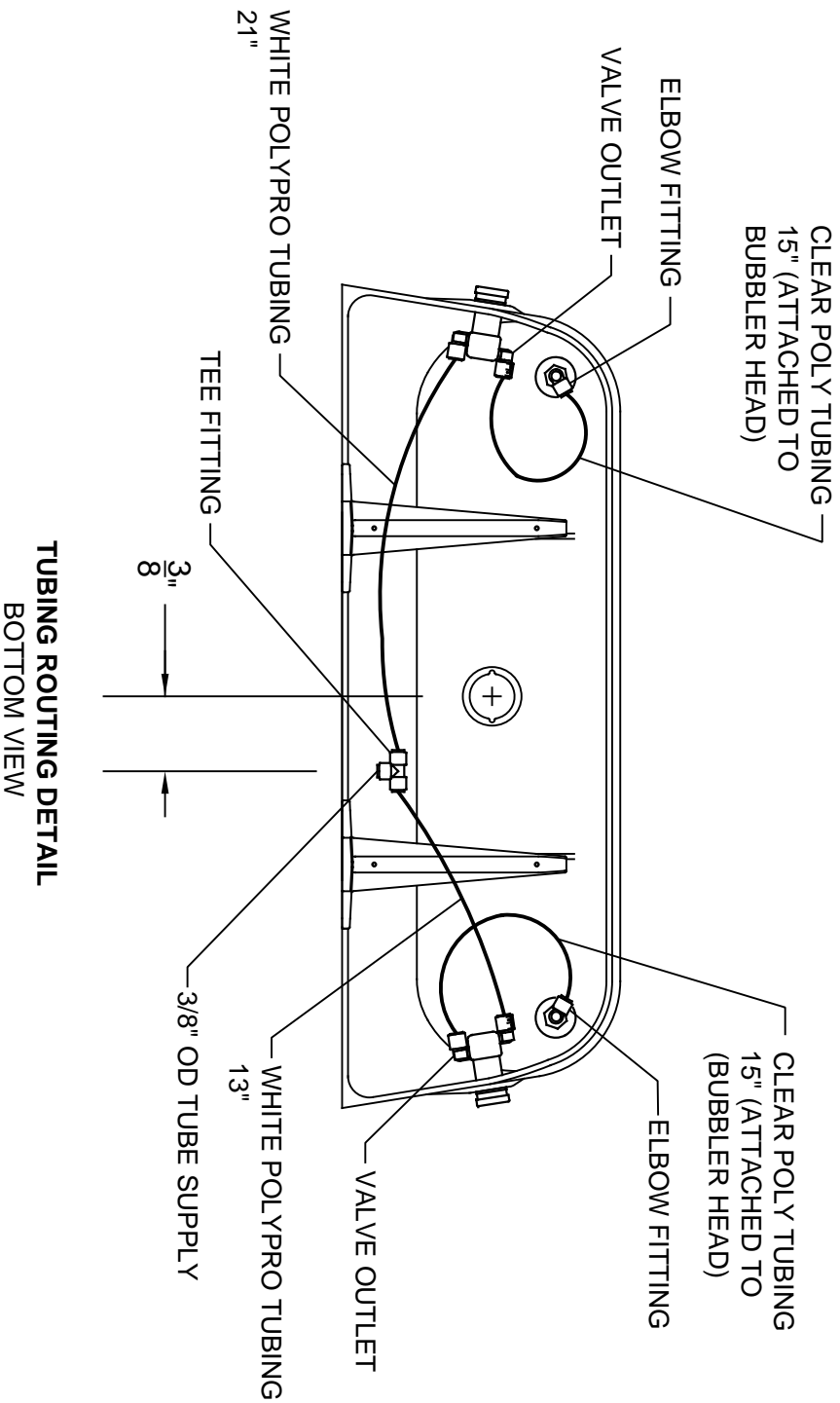
**HAWWS**

1456 KLEPPE LANE  
SPARKS, NEVADA, 89431  
(775) 359-4712 FAX (775) 359-7424  
E-MAIL: HAWWS@HAWSCO.COM  
WEBSITE: WWW.HAWSCO.COM

|                           |                |                            |
|---------------------------|----------------|----------------------------|
| ECN NO. REVISED PER BY:   | MODEL(S)       | 1430                       |
| DRAWN: ECN: S188          | DATE: 11-01-91 | CHKD: JP                   |
| CIL                       | DATE: 07/08/17 | SCALE: 1:11                |
| APPROVED: FV              | SCALE: 1:11    | DRAWING TYPE: INSTALLATION |
| TWO BUBBLER FOUNTAIN      |                | SIZE: A                    |
| PART NUMBER: 0002076850.D |                | SHEET: 1 OF 2              |
| REVISION: 18              |                |                            |

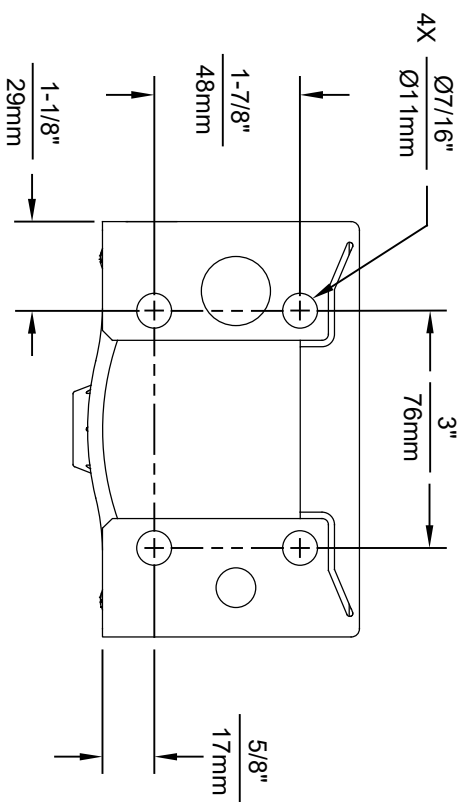
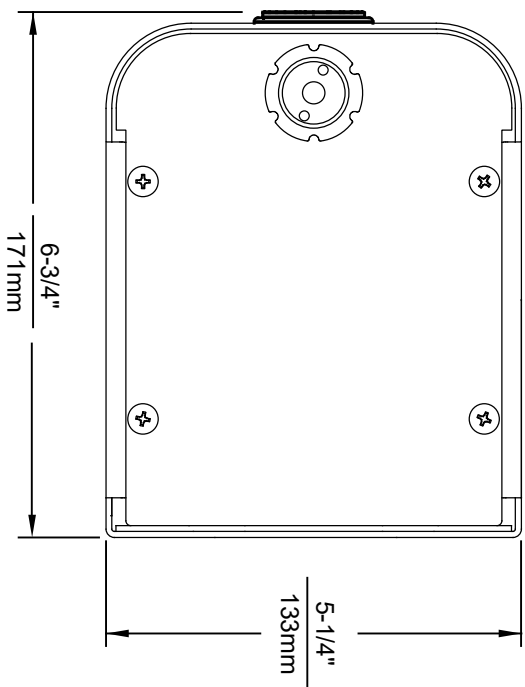
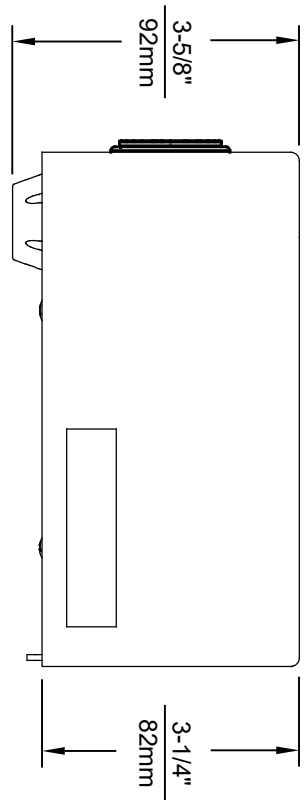
NOTES: (CONTINUED)

4. CONNECT WHITE "POLYPROPYLENE" TUBING ON PRESSURE SIDE (INLET) OF VALVE.
5. CONNECT CLEAR "POLYETHYLENE" TUBING ON FREE FLOW SIDE (VALVE TO BUBBLER HEAD) ONLY.

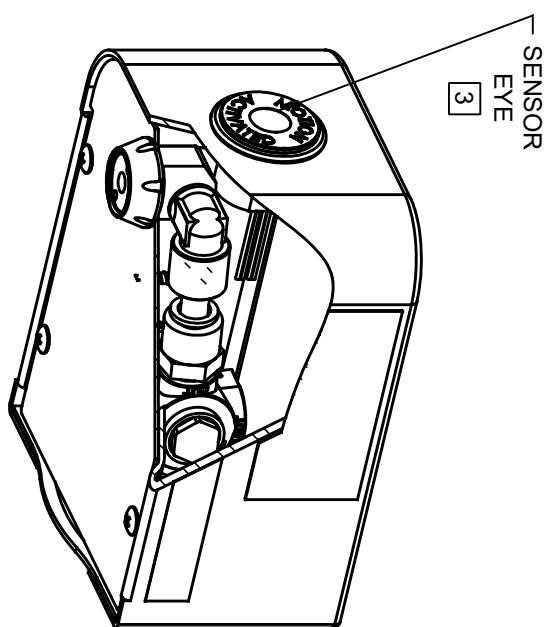


TUBING ROUTING DETAIL  
BOTTOM VIEW

|  |                      |             |                            |
|--|----------------------|-------------|----------------------------|
|  |                      | <b>Haws</b> |                            |
| 1459 KLEPPE LANE<br>SPARKS, NEVADA, 89431<br>(775) 359-4712 FAX (775) 359-7424<br>E-MAIL: HAWS@HAWS.CO.COM<br>WEBSITE: WWW.HAWS.CO.COM |                      |             |                            |
| ECN NO. REVISED PER BY:  | MODEL(S)             | 1430        | PART NUMBER                |
| ECN: S188 JP   | TWO BUBBLER FOUNTAIN |             | 0002076850.D               |
| DRAWN: CLJ   | DATE: 11-01-91       | CHKD: VWC   | REVISION: 18               |
| APPROVED: FV   | DATE: 02/08/17       | SCALE: 1:11 | DRAWING TYPE: INSTALLATION |
|  |                      | SIZE: A     | SHEET: 2 OF 2              |



1920HO SERIES MOUNTING HOLE LOCATIONS  
(3/8" - 16 UNC MOUNTING HARDWARE NOT SUPPLIED)



NOTES:

1. SEE SEPARATE INSTALLATION DRAWINGS FOR MOUNTING PLATES AND BACKPANELS
2. WHEN INSTALLING THIS UNIT, LOCAL, STATE OR FEDERAL CODES SHOULD BE ADHERED TO FOR INSTALLATION LOCATIONS, WASTE AND SUPPLY REQUIREMENTS OTHER THAN SHOWN.
3. REFER TO 1RKHO.H OPERATION & MAINTENANCE INSTRUCTIONS FOR SENSOR SETUP.



1455 KLEPPE LANE  
SPARKS, NEVADA 89431  
(775) 359-4712 FAX (775) 359-7424  
E-MAIL: HAWS@HAWS.CO.COM  
WEBSITE: WWW.HAWS.CO.COM

|                          |                          |              |
|--------------------------|--------------------------|--------------|
| EQ. NO. REVISIONS PER BY | MODEL(S)                 | PART NUMBER  |
| 5274 EQN 5681 B.M.       | 1920HO/1920HPSHO/1920WHO | 0510001063.D |
| DRAWN DATE               | SCALE                    | REVISION     |
| DATE                     | N/A                      | 4            |
| APPROVED DATE            | DRAWING TYPE             | SHEET 1 OF 6 |
| B.M.                     | INSTALLATION             |              |