



# INSTALLATION, OPERATION & MAINTENANCE INSTRUCTIONS

1455 Kleppe Lane ♦ Sparks, NV 89431-6467 ♦ (775) 359-4712 ♦ Fax (775) 359-7424  
E-mail: [haws@hawsco.com](mailto:haws@hawsco.com) ♦ website: [www.hawsco.com](http://www.hawsco.com)

No. 0510001206 (1)

## Model 1011MSHO/1011MSHO2 Drinking Fountain

**NOTE TO INSTALLER:** Please leave this information with the Maintenance Department.

### LIMITED WARRANTY

HAWS warrants that this specific product is guaranteed against defective material or poor workmanship for a period of **one year from date of shipment**. HAWS liability under this warranty shall be discharged by furnishing without charge F.O.B. HAWS Factory any goods, or part thereof, which shall appear to the Company upon inspection to be of defective material or not of first class workmanship, provided that claim is made in writing to Haws within a reasonable period after receipt of the product. Where claims for defects are made, the defective part or parts shall be delivered to the Company, prepaid, for inspection. HAWS will not be liable for the cost of repairs, alterations or replacements, or for any expense connected therewith made by the owner or his agents, except upon written authority from HAWS, Sparks, Nevada. HAWS will not be liable for any damages caused by defective materials or poor workmanship, except for replacements, as provided above. Buyer agrees that HAWS shall not be liable for general, special, or consequential damages claimed to arise under the contract of sale. The drinking fountain manufactured by HAWS is warranted to function if installation and maintenance instructions provided are adhered to. The units also must be used for the purpose for which they were intended.

**NO OTHER WARRANTIES EXPRESSED OR IMPLIED ARE AUTHORIZED, PROVIDED OR GIVEN BY HAWS.**

**SHOULD YOU EXPERIENCE DIFFICULTY WITH THE INSTALLATION OF THIS MODEL PLEASE CALL:**

**TECHNICAL SUPPORT: 1-800-766-5612**

**FOR CUSTOMER SERVICE: 1-888-640-4297**

**RECOMMENDED TOOLS:** Hack saw, pipe joint sealant, screwdriver, level, 12" adjustable wrench, 10" pipe wrench, 5/32" hex key wrench, 9/16", 1/2", 7/16" socket wrench or open-end wrench.

**LOCATION OF UNIT:** The Model 1011MSHO/1011MSHO2 Drinking Fountain is a wheelchair accessible drinking water facility. The height dimensions shown, meet current ADA requirements. When installing this unit, local, state or federal codes should be adhered to. If height other than shown is required, then dimensions must be adjusted accordingly.

**SUPPLY LINE:** The minimum recommended line size is 1/2"IPS with 30-90 psi (2-6 ATM) flowing pressure. Where sediment or mineral content is a problem, an inlet filter is recommended.

**PLUMBING CONNECTIONS:** Inlet is 3/8" O.D. push-in type fitting. Waste outlet is 1-1/4" O.D. tube.

**ELECTRICAL CONNECTIONS:** Drinking Fountain may be mounted on external wall of building provided transformer shall be mounted inside the wall and protected from water as shown on RKHO Series O&M (supplied along with 1011HO/1011HO2 Series Operation & Maintenance Manual) details (page 8) per NEC/CEC and local code.

**Sensor:**

1011MSHO with 1RKHO.H: 100-277VAC x 9VDC, 50-60Hz, 5 Watts

1011MSHO2 with 2RKHO.H: 100-277VAC x 9VDC, 50-60Hz, 5 Watts

**MAINTENANCE:** Periodically clean out the supply line Y-strainer (and strainer located inside push button valve on Model 1011MSHO). Refer to 5874 Series Valve Manual for more information.

## INSTALLATION PROCEDURE

### GENERAL NOTES:

1. For all plastic push-in type fitting connections, only connect NSF-61 copper or plastic tubing. Stainless steel or glass tubing is not recommended. The following assembly instructions must be followed to ensure a watertight connection:
  - a. Cut tubing square and clean.
  - b. Mark from end of tube the length of insertion (See table below).
  - c. Push tube into the fitting until it bottoms out.
  - d. To remove, depress collet and pull tubing out.

Tube Sizes	O.D. Tolerance	Insertion Depth
3/8"	±.005"	3/4"

2. Refer to 1011HO/1011HO2 Series Operation and Maintenance manual for additional installation instructions (supplied). Refer to 1RKHO.H & 2RKHO.H manuals for Transformer & Sensor Setup instructions (supplied).

**5874 Series VALVE TROUBLESHOOTING (Models 1011HO/1011HPSHO Only)**

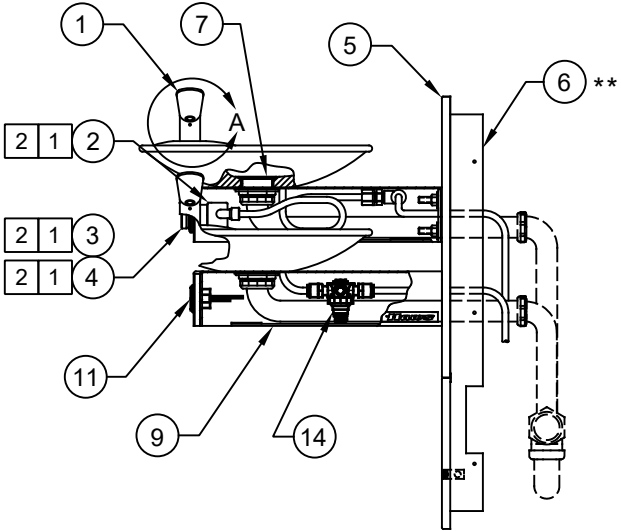
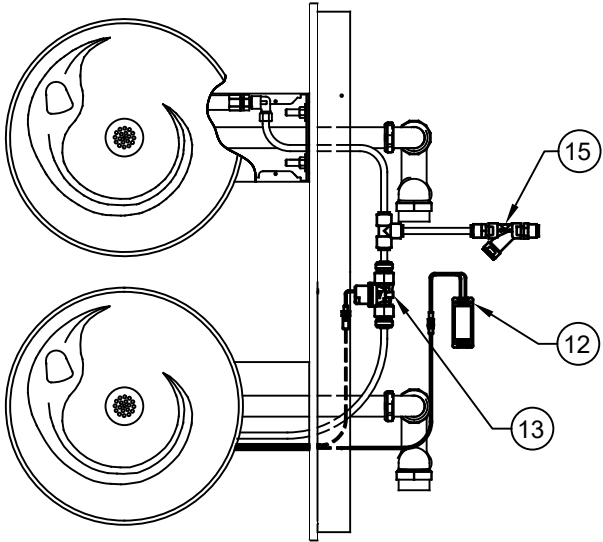
PROBLEM	REPAIR CHECKLIST
1. Insufficient bubbler flow.	1a. Check that inlet screwdriver stop valve (not supplied) is in wide-open position. b. Verify minimum 30 psi flowing supply pressure. c. Clean strainer. See 5874 Series Valve Manual. d. Adjust valve to increase flow. Use front adjust screw or see 5874 Series Valve Manual.
	e. Clean screens (inside nozzle body). Unscrew nozzle insert and very gently activate water supply to pop out qty. 3 screens (be careful not to lose screens). Remove any debris clogging the screen openings and place back into nozzle body. Reassemble nozzle insert.

For more information about Haws products, see our website: [www.hawsc.com](http://www.hawsc.com)

© 2021 Haws® Corporation – All Rights Reserved  
HAWS® and other trademarks used in these materials are the exclusive property of Haws Corporation.

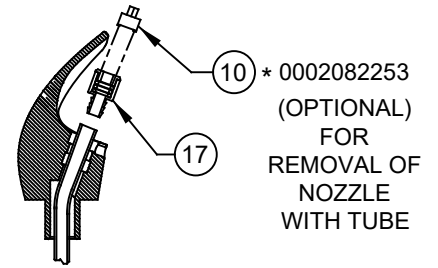
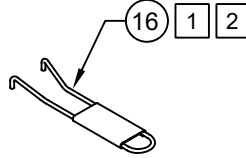
NOTES:

- [1] 5874PBF (ITEM 2) INCLUDES VRK5874 CARTRIDGE ASSEMBLY (ITEM 3), PBA6 FLANGED PUSH BUTTON (ITEM 4) AND SPANNER WRENCH (ITEM 16).
- [2] ITEMS 2, 3, 4 AND 16 ARE ONLY USED ON MODELS 1011HO AND 1011HPSHO.



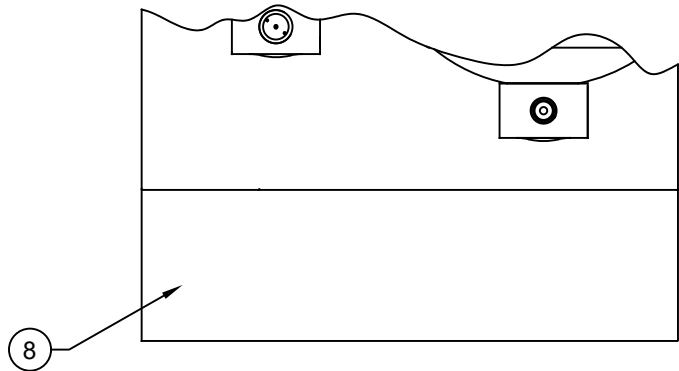
ITEM	DESCRIPTION	1011MSHO	1011MSHO2	
1	BUBBLER HEAD, PCP	5705	5705	
[2]	2	BUTTON, PUSH, PCP, FLANGED W/ VALVE	5874PBF	----
[2]	3	VALVE REPAIR KIT	VRK5874	----
[2]	4	BUTTON, PUSH, 5874, FLANGED	PBA6	----
	5	PANEL, BACK, F/ SATIN SWIRL	0004012000	0004012000
**	6	FRAME, MOUNTING	MTGFR.DF.2	MTGFR.DF.2
	7	STRAINER, WASTE ASSEMBLY, SCP OR PCP	6463	6463
	8	PANEL, ACCESS, DUAL #4	6608	6608
	9	PLATE, BOTTOM, F/1000	PBM1000	PBM1000
*	10	DRIVER, NOZZLE, .25 HEX	0002082253	0002082253
	11	SENSOR	VRKHO6	VRKHO6
	12	TRANSFORMER	VRKHO8	VRKHO8
	13	SOLENOID VALVE	VRKHO5	VRKHO5
	14	PRESSURE REGULATOR	5867	5867
	15	Y-STRAINER	6433	6433
[2]	16	SPANNER WRENCH	0006983506	----
	17	INSERT, LAMINAR FLOW, 5705	0002850230	0002850230

\* DENOTES OPTIONAL PART.  
 \*\* REQUIRED - SOLD SEPARATELY.



\* 0002082253  
 (OPTIONAL)  
 FOR  
 REMOVAL OF  
 NOZZLE  
 WITH TUBE

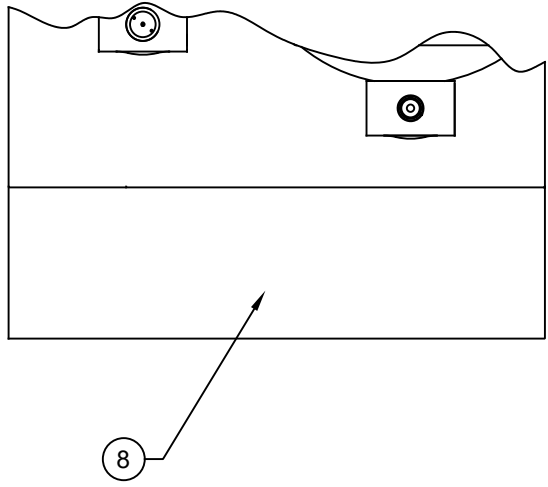
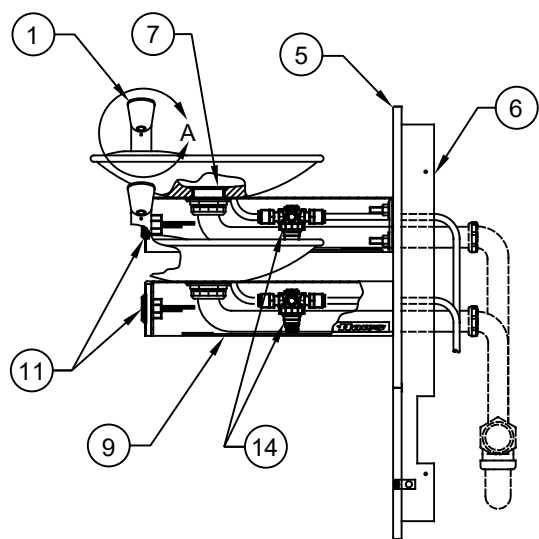
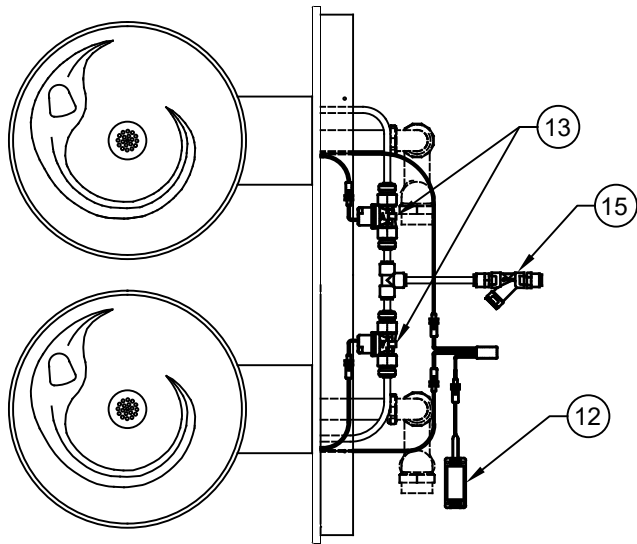
**BUBBLER HEAD 5705**  
 (TUBING CONNECTS TO  
 INSERT ASSY)  
 DETAIL A  
 ROTATED 90° INTO VIEW



1011MSHO SHOWN  
 1011MSHO2 ON SHEET 2  
**PARTS BREAKDOWN**

WHEN ORDERING PARTS PLEASE SPECIFY MODEL NUMBER.


		<b>Haws</b> <sup>®</sup>		1455 KLEPPE LANE SPARKS, NEVADA 89431 (775) 359-4712 FAX (775) 359-7424 E-MAIL: HAWS@HAWSCO.COM WEBSITE: WWW.HAWSCO.COM	
				ECN NO. 5701 DRAWN FV APPROVED FV	REVISED PER ECN: 5701 DATE 05/27/21 DATE 06/02/21
SCALE: 1:8		DRAWING TYPE: PARTS BREAKDOWN		SIZE: A SHEET 1 OF 2	



1011MSHO2 SHOWN  
1011MSHO ON SHEET 1

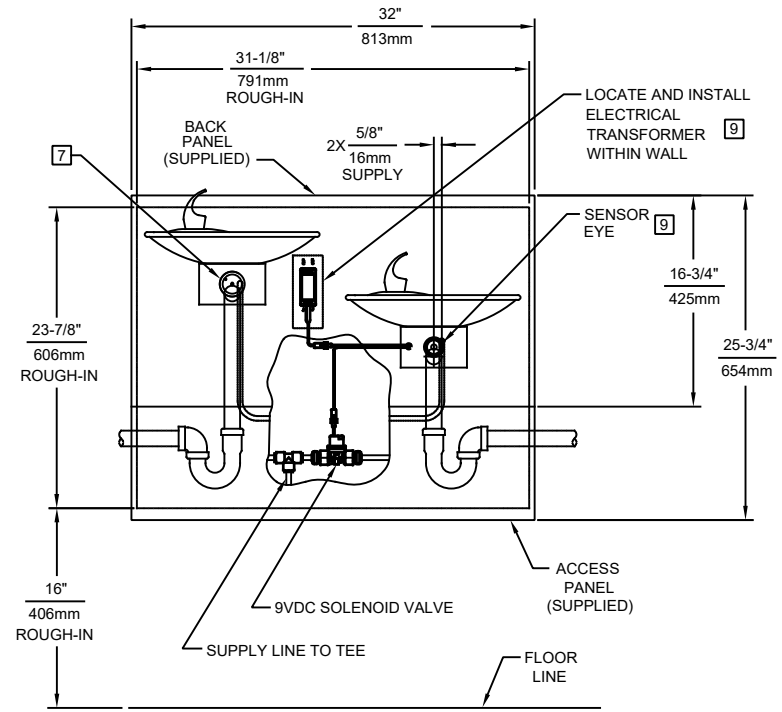
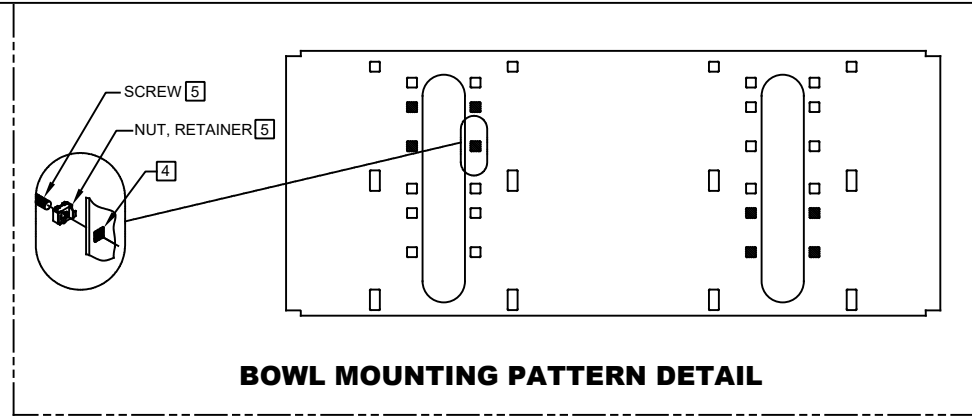
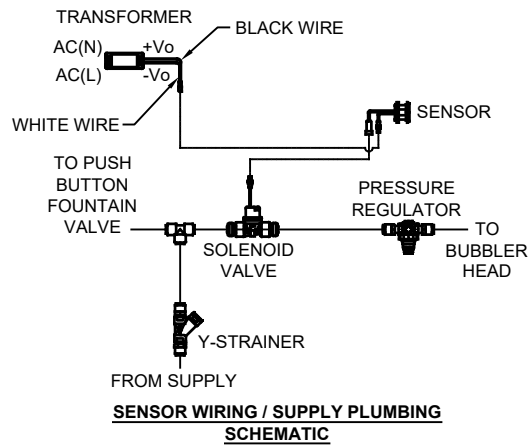
# PARTS BREAKDOWN

WHEN ORDERING PARTS PLEASE SPECIFY MODEL NUMBER.

		<b>Haws</b> <sup>®</sup>		1455 KLEPPE LANE SPARKS, NEVADA 89431 (775) 359-4712 FAX (775) 359-7424 E-MAIL: HAWS@HAWSCO.COM WEBSITE: WWW.HAWSCO.COM		
ECN NO. 5701	REVISED PER ECN: 5701	BY FV	MODEL(S) 1011MSHO/1011MSHO2			PART NUMBER 0510001206
DRAWN FV	DATE 05/30/21	CHKD DP				REVISION 1
APPROVED FV	DATE 06/02/21	SCALE: 1:1	DRAWING TYPE: PARTS BREAKDOWN	SIZE: A	SHEET 2 OF 2	

**NOTES:**

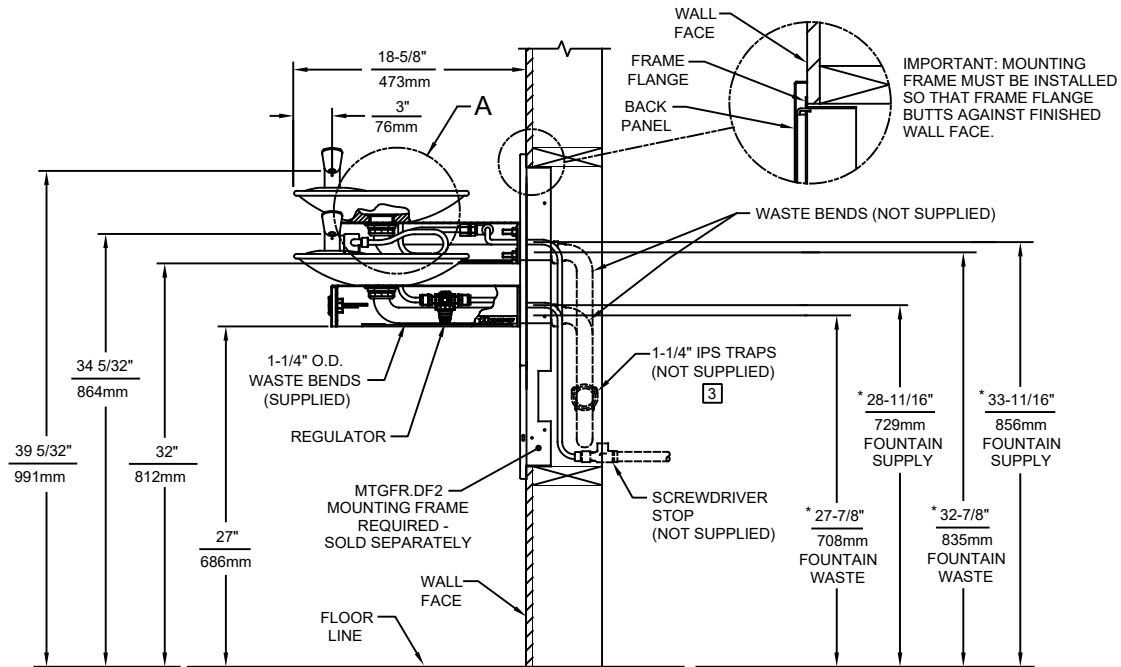
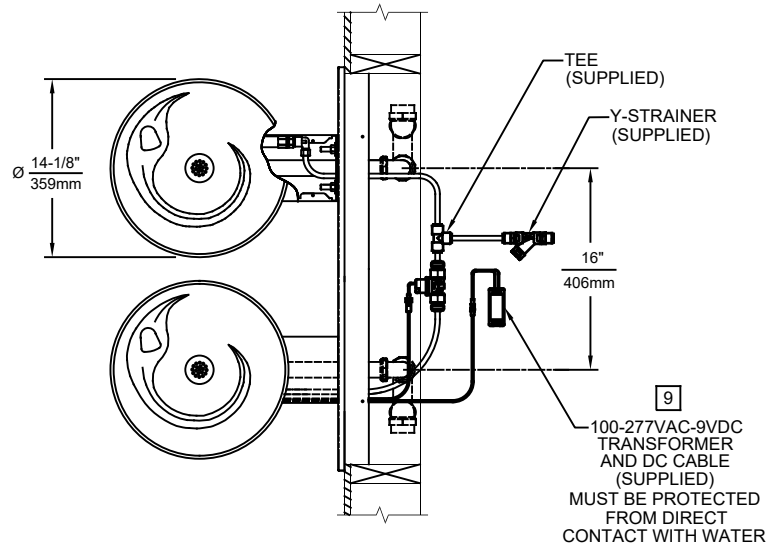
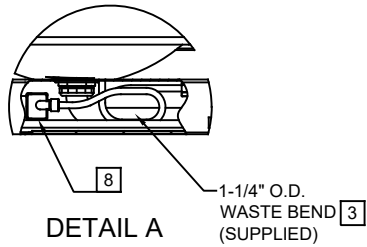
1. HOLD ROUGH-IN DIMENSIONS  $\pm 1/8"$  (3.2mm).
2. WHEN INSTALLING THIS UNIT, LOCAL, STATE, OR FEDERAL CODES SHOULD BE ADHERED TO FOR DIMENSIONS (LOCATIONS), WASTE AND SUPPLY REQUIREMENTS OTHER THAN SHOWN.
3. INSTALLER MUST PROVIDE TRAP (NOT SUPPLIED) FOR PROPER INSTALLATION.
4. HOLE COMBINATION SHOWN IS FOR USE WITH LOW FOUNTAIN ON THE RIGHT AND HIGH FOUNTAIN ON THE LEFT. USE OPPOSITE HOLES FOR HIGH ON RIGHT AND LOW ON LEFT.
5. TO CHANGE FOUNTAIN MTG. SCREW LOCATIONS: FIRST REMOVE SCREWS AND THEN SQUEEZE CLIPS ON NUT RETAINER TO POP OUT. SNAP INTO NEW POSITIONS FROM BACKSIDE AND RE-ASSEMBLE SCREWS.
6. IMPORTANT: A L.H. LOW (OPTIONAL) CONFIGURATION WILL REQUIRE A DIFFERENT BACK PANEL AND THE WASTE AND SUPPLY DIMENSIONS SHOWN (\*) MUST BE REVERSED.
7. REFER TO 5874 SERIES OPERATION AND MAINTENANCE MANUAL FOR PUSH BUTTON AND VALVE INSTALLATION/MAINTENANCE INSTRUCTIONS.
8. REMOVE VALVE FROM PUSH BUTTON TO INSTALL WASTE ELBOW ONTO BOWL. AFTER WASTE ELBOW IS INSTALLED, REINSTALL VALVE AND ADJUST FLOW.
9. REFER TO 1RKHO.H & 2RKHO.H OPERATION AND MAINTENANCE INSTRUCTIONS FOR TRANSFORMER AND SENSOR SETUP.



MODEL 1011MSHO SHOWN  
 MODEL 1011MSHO2 ON SHEET 3  
 (ROUGH-IN DIMENSIONS APPLY TO BOTH MODELS)

1455 KLEPPE LANE  
 SPARKS, NEVADA 89431  
 (775) 359-4712 FAX (775) 359-7424  
 E-MAIL: HAWS@HAWSCO.COM  
 WEBSITE: WWW.HAWSCO.COM

ECN NO. 5701		REVISED PER ECN: 5701		BY: FV		MODEL(S)		PART NUMBER	
DRAWN: FV		DATE: 05/27/21		CHKD.: DP		1011MSHO/1011MSHO2		0510001206.D	
APPROVED: FV		DATE: 06/02/21		SCALE: 1:16		DRAWING TYPE: INSTALLATION		REVISION	
								1	
								SHEET 1 OF 3	

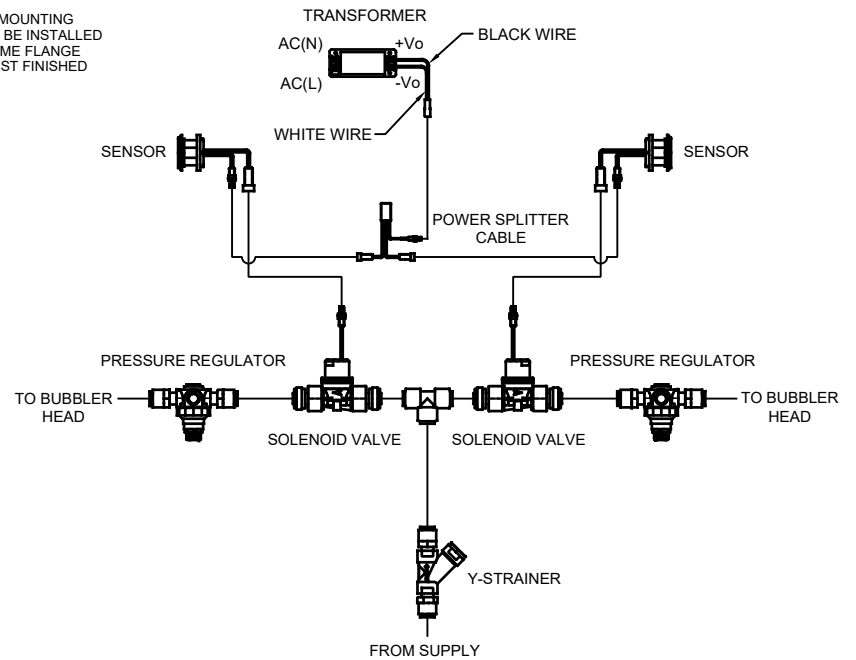
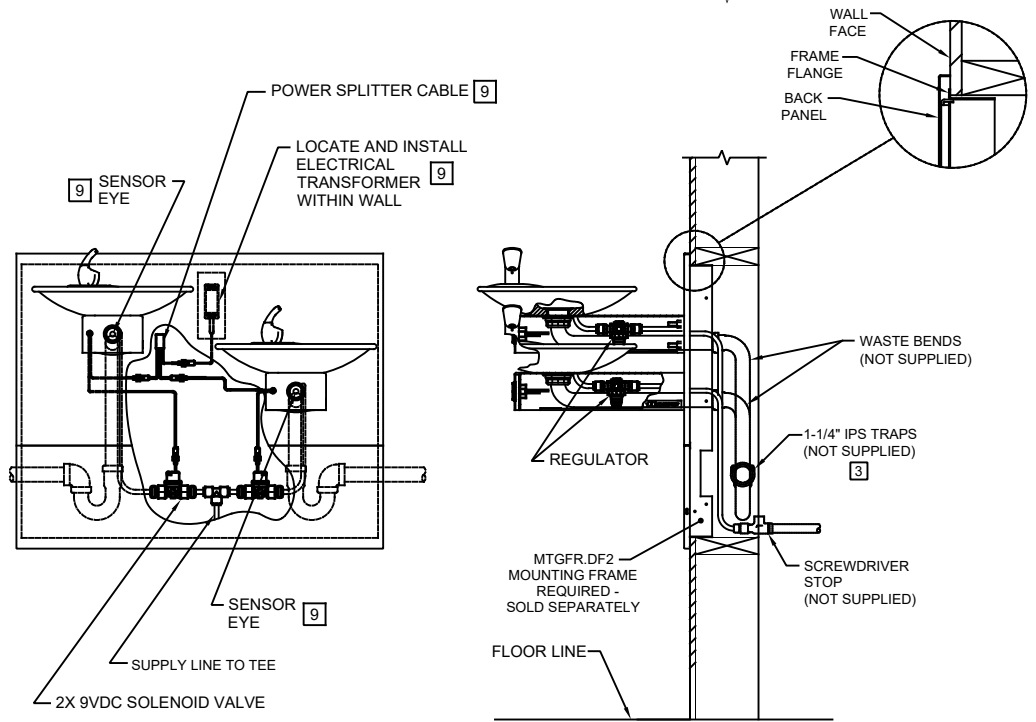
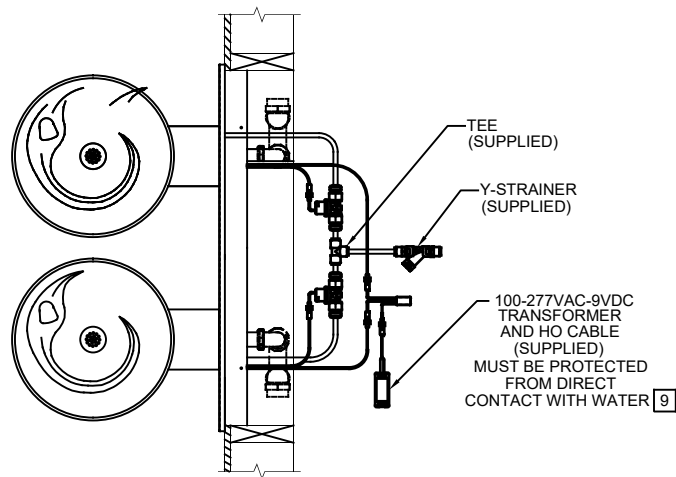


MODEL 1011MSHO SHOWN  
MODEL 1011MSHO2 ON SHEET 3  
(ROUGH-IN DIMENSIONS APPLY TO BOTH MODELS)



1455 KLEPPE LANE  
SPARKS, NEVADA 89431  
(775) 359-4712 FAX (775) 359-7424  
E-MAIL: HAWS@HAWS.CO.COM  
WEBSITE: WWW.HAWS.CO.COM

ECN NO. 5701	REVISED PER ECN: 5701	BY: FV	MODEL(S)	PART NUMBER
DRAWN: FV	DATE: 05/31/21	CHKD.: DP	1011MSHO/1011MSHO2	0510001206.D
APPROVED: FV	DATE: 06/02/21		SCALE: 1:16	DRAWING TYPE: INSTALLATION
			SIZE: A	SHEET 2 OF 3



**SENSOR WIRING / SUPPLY PLUMBING SCHEMATIC**

MODEL 1011MSHO2 SHOWN  
 MODEL 1011MSHO ON SHEETS 1 AND 2  
 (SEE SHEETS 1 AND 2 FOR APPLICABLE ROUGH-IN DIMENSIONS)

		<b>Haws</b> ®		1455 KLEPPE LANE SPARKS, NEVADA 89431 (775) 359-4712 FAX (775) 359-7424 E-MAIL: HAWS@HAWS.CO.COM WEBSITE: WWW.HAWS.CO.COM	
				ECN NO. 5701 DRAWN: FV APPROVED: FV	REVISED PER: ECN: 5701 DATE: 08/01/21 DATE: 06/02/21
SCALE: 1:1		DRAWING TYPE: INSTALLATION		SIZE: A SHEET 3 OF 3	