

FEATURES & BENEFITS

CONSTRUCTION

Rugged ADA accessible 18 gauge Type 304 Stainless Steel swirl design bowls, 14 gauge Type 304 Stainless Steel brackets and bottle filler, and vandal-resistant bottom plates provides a long lasting unit with added peace of mind.

BOTTLE FILLER

Vandal-resistant, 14-gauge Type 304 stainless steel bottle filler housing with touchless operation and 1 gpm (3.78 L) laminar flow.

VANDAL RESISTANT

The bubbler heads, sensors, round bowls, drain strainers and bottom plates are locked in place, discouraging unwanted vandal tampering, and 30-second obstruction time-out to reduce tampering of sensors.

BUBBLER HEADS

Polished chrome-plated brass bubbler heads with integral laminar flow prevents splashing while providing a superior flow pattern. The integral 11/16" dia. basin shank and stainless anti-rotational roll pin add vandal-resistant strength. Shielded, angled stream opening provides a steady source of drinking water at .45 gpm.

FOUNTAIN VALVES

Fountain incorporates a touchless sensor operated stainless steel solenoid valves controlled by a transformer for hands-free operation. A pressure regulator is used to adjust the bubbler flow according to incoming water pressures.

MOUNTING

Heavy-duty 16-gauge galvanized steel mounting frame with welded-in heavy-duty 10 gauge mounting plate with pre-punched mounting holes. Further convenience is given to the chiller with the integral fold-out shelf. Also included is an in-wall 3/16" thick steel mounting plate for the bottle filler.

OPTIONS

- Water Filter: Model 6480 filter kit with 3000 gallon carbon block filter, filter head, and mounting bracket.
- Mounting Plate: Model 6700R, on-wall mounting plate for model 1920HO.
- Bottle Filler Stand: Model BTL1001, add-on stainless steel stand to place bottle on when 1920 bottle filler is used

For more information, visit www.hawscow.com or call (888) 640-4297.



SPECIFICATIONS

H1011.8HO2 / MTGFR.LG / HCR8 / 1920HO / 6700 / BP32

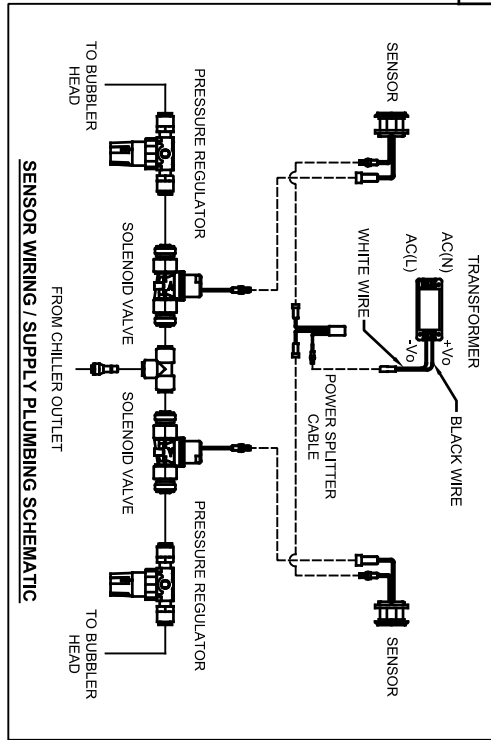
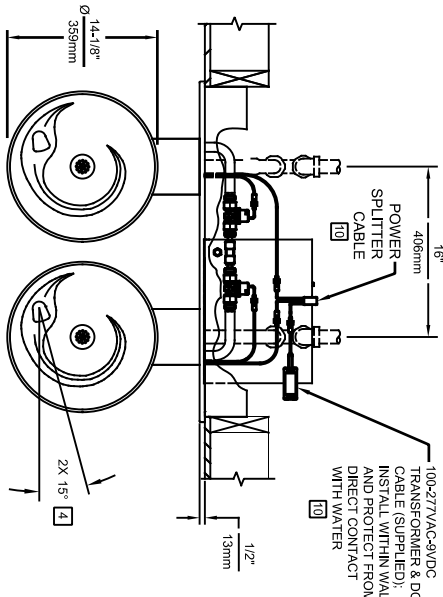
Order these items to make up Model H1011.8HO2-1920HO fountain with stainless steel back panel and grille, bottle filler with stainless steel back plate, and remote chiller shown above.

FOR INDOOR USE ONLY

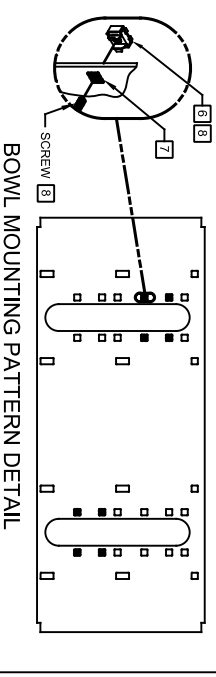
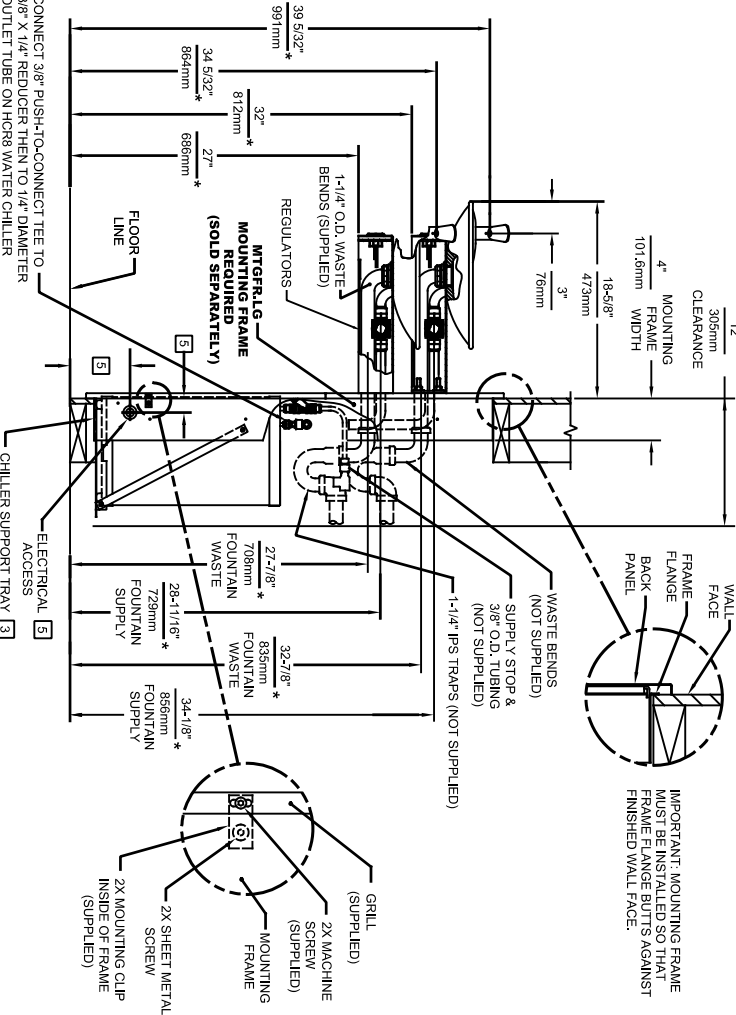
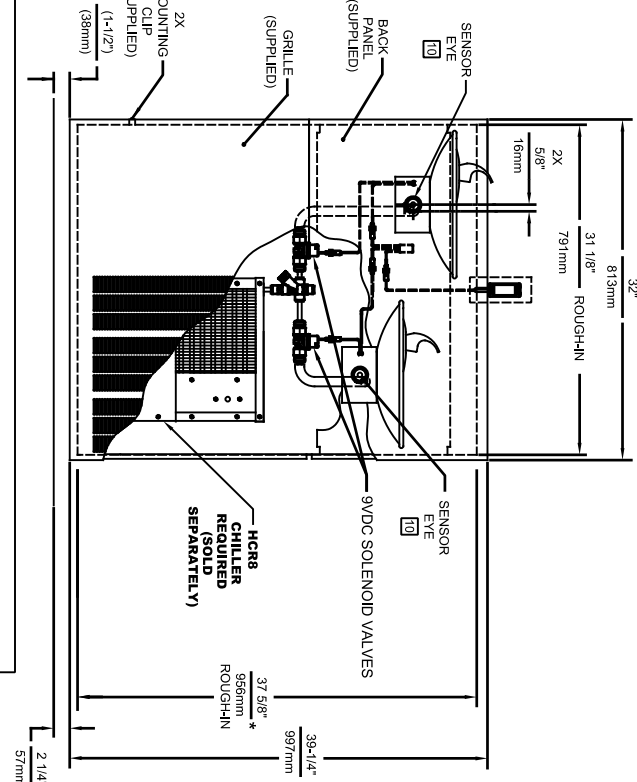
APPLICATIONS

Model H1011.8HO2-1920HO ADA vandal-resistant motion-activated wall mounted drinking fountain and bottle filler shall include dual 18-gauge Type 304 Stainless Steel satin finish basins with integral swirl design, 14 gauge Type 304 Stainless Steel wall brackets and bottle filler bracket, in-wall 3/16" thick steel mounting plate for the bottle filler, 100% lead-free waterways, touchless sensor operated stainless steel solenoid valves with 30-second obstruction time-out controlled by a transformer, polished chrome-plated brass vandal resistant bubbler heads with integral laminar anti-squirt flow, 1 gpm (3.78 L) laminar flow bottle filler, chrome-plated brass vandal-resistant waste strainers, vandal-resistant bottom plates, stainless steel satin finish back panels and louvered intrusion-proof grill, high and low fountain mounting levels, and 1-1/4" O.D. (3.2 cm) waste pipes. The refrigeration system is hermetically sealed and delivers a minimum of 8 gph (30.3 L) of water at 50° F (10° C), 115 Volts, 60Hz, rated watts: 370, full load amps: 5. Haws electric water coolers comply with ARI Standard 1010 and ANSI A117.1, and are listed by Underwriter Laboratories to U.S. and Canadian standards. Manufactured to be lead-free by all known definitions including NSF/ ANSI/CAN 61-Section 9, NSF/ANSI/ CAN 372, California Proposition 65, and the Federal Safe Drinking Water Act. Product is compliant to California Health and Safety Code 116875 (AB 1953-2006), and 116876 (AB 100) "NSF/ANSI/CAN 61: Q ≤ 1".





- NOTES:
1. HOLD ROUGH-IN DIMENSIONS $\pm 1/8"$ (3.2mm).
 2. WHEN INSTALLING THIS UNIT, LOCAL, STATE, OR FEDERAL CODES SHOULD BE ADHERED TO. FOR INSTALLATION DIMENSIONS (LOCATIONS), WASTE AND SUPPLY REQUIREMENTS (LOCATIONS), AND DIMENSIONS MARKED (*) MUST BE ADJUSTED ACCORDINGLY.
 3. ALIGN HOLES IN CHILLER SUPPORT TRAY WITH HOLES IN FRAME AND FASTEN WITH #10 SHEETMETAL SCREWS.
 4. MAXIMUM ADJUSTABLE RANGE IS 15" FROM PARALLEL TO BACK WALL.
 5. REFER TO MTFRFLG INSTALLATION DRAWING FOR ROUGH-IN DIMENSIONS.
 6. INSERT 5/16"-18 PANEL, INSERTS FROM OPPOSITE SIDE AT LOCATIONS SHOWN BY DARKENED HOLES. HOLE COMBINATIONS SHOWN ARE FOR USE WITH LOW FOUNTAIN ON THE RIGHT AND HI FOUNTAIN ON THE LEFT. USE OPPOSITE HOLES FOR HI ON RIGHT AND LOW ON LEFT.
 7. HOLE COMBINATION SHOWN BELOW IS FOR USE WITH LOW FOUNTAIN ON THE RIGHT AND HI FOUNTAIN ON THE LEFT. USE OPPOSITE HOLES FOR HIGH ON RIGHT AND LOW ON LEFT.
 8. TO CHANGE FOUNTAIN MFG. SCREW LOCATIONS, FIRST REMOVE SCREWS AND THEN SQUEEZE CLIPS ON NUT RETAINER TO POP OUT. SNAP INTO NEW POSITIONS AND RE-ASSEMBLE SCREWS.
 9. IMPORTANT! A L.L.O. (OPTIONAL) CONFIGURATION WILL REQUIRE A DIFFERENT BACK PANEL AND THE WASTE AND SUPPLY DIMENSIONS SHOWN (*) MUST BE REVERSED.
 10. REFER TO 1RKHOH & 2RKHOH OPERATION AND MAINTENANCE INSTRUCTIONS FOR TRANSFORMER AND SENSOR SETUP.



Haws
Since 1906

1455 KLEPPLE LANE
SPARKS, NEVADA 89431
(775) 359-4712 FAX (775) 359-1424
E-MAIL: HAWS@HAWS.CO.COM
WEBSITE: WWW.HAWS.CO.COM

ECN NO. 1011.8HO2
REVISION 33

REVISION 33

SCALE: 1:1 DRAWING TYPE: INSTALLATION

SIZE: A1 SHEET 1 OF 1

CALLOUT LEGEND	
A	1/4" OD WATER OUTLET
B	3/8" OD WATER INLET
C	TEMPERATURE CONTROL
D	JUNCTION BOX
E	ELECTRICAL WIRING OPENING

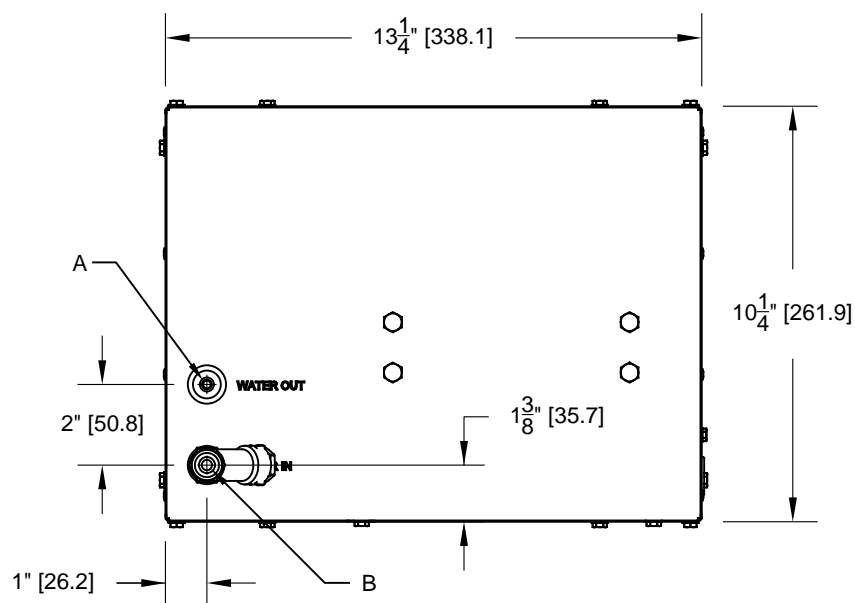


FIG. 2

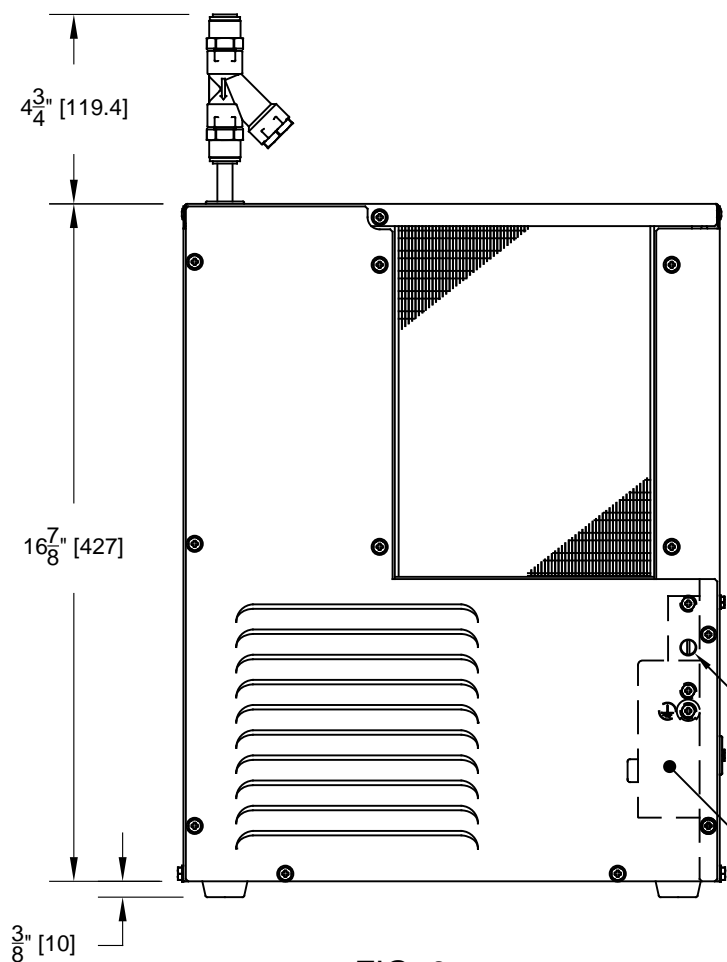


FIG. 3

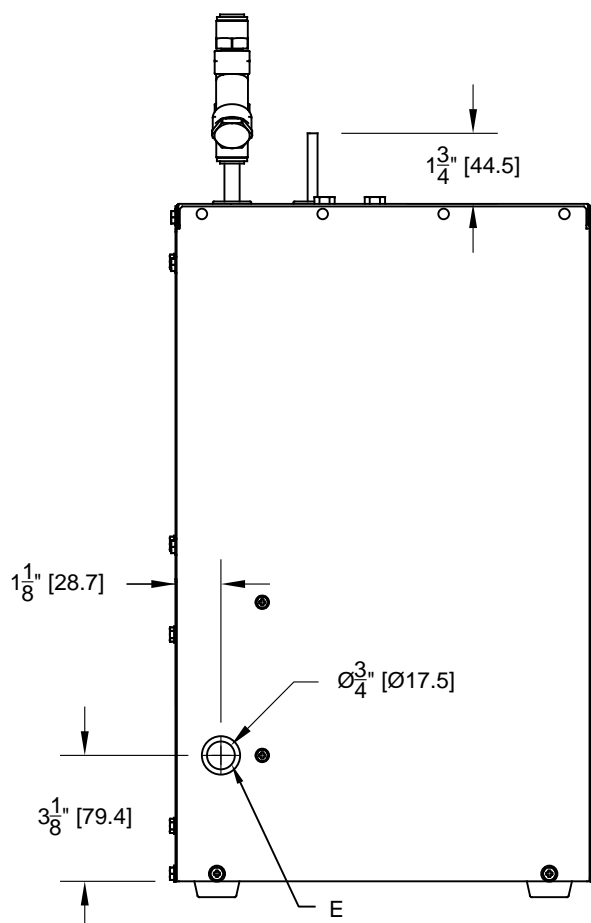



FIG. 4

		Haws®		1455 KLEPPE LANE SPARKS, NEVADA 89431 (775) 359-4712 FAX (775) 359-7424 E-MAIL: HAWS@HAWS.CO.COM WEBSITE: WWW.HAWS.CO.COM	
ECN NO. 4997	REVISED PER ECN: 5401	BY DHP	MODEL(S) HCR8 REMOTE CHILLER		PART NUMBER 0580000134.D
DRAWN VWC	DATE 01/25/16	CHKD DHP			REVISION 4
APPROVED JL	DATE 02/05/19		SCALE: NA	DRAWING TYPE: INSTALLATION	SIZE: A
					SHEET 1 OF 2

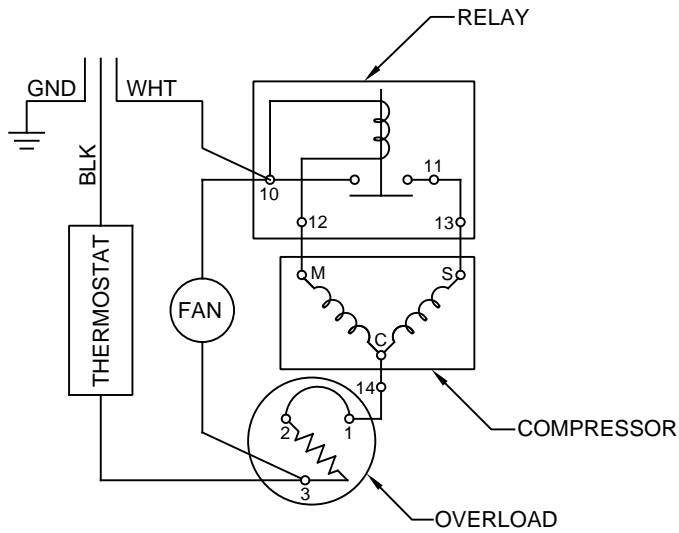


FIG. 5
WIRING DIAGRAM

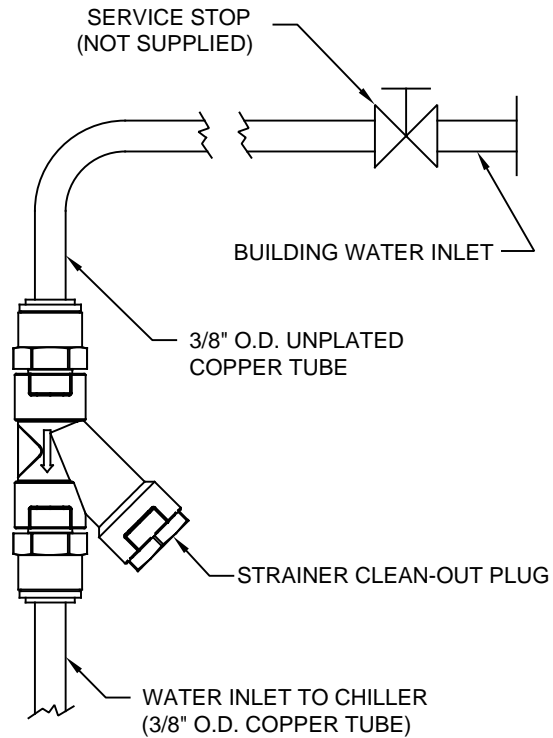
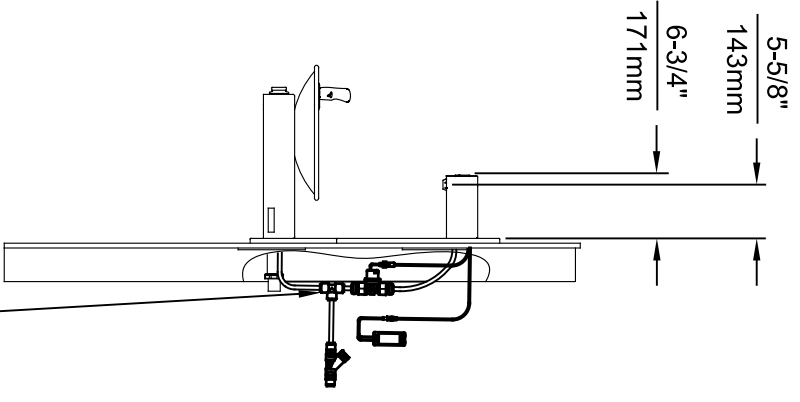
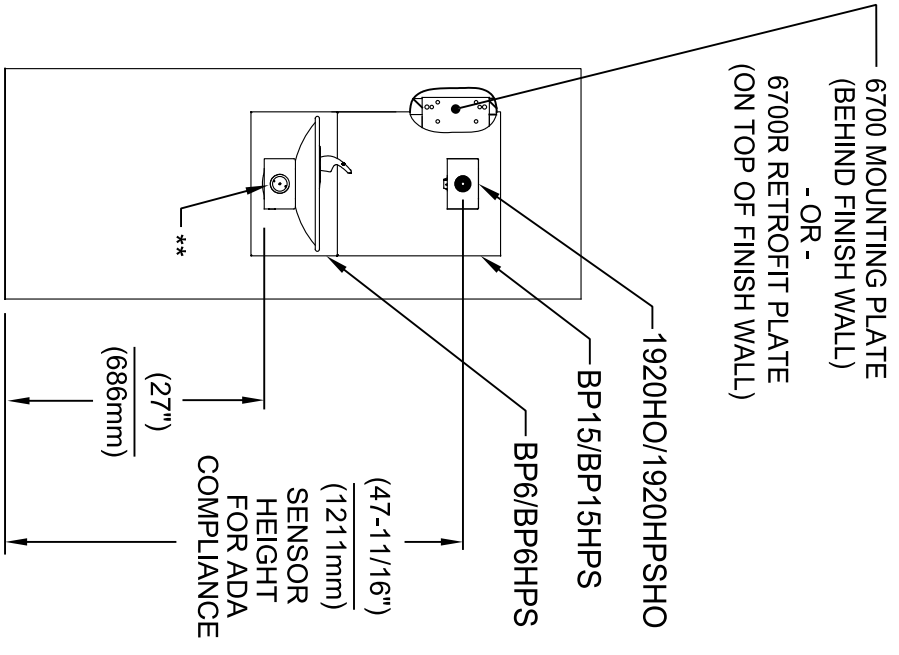
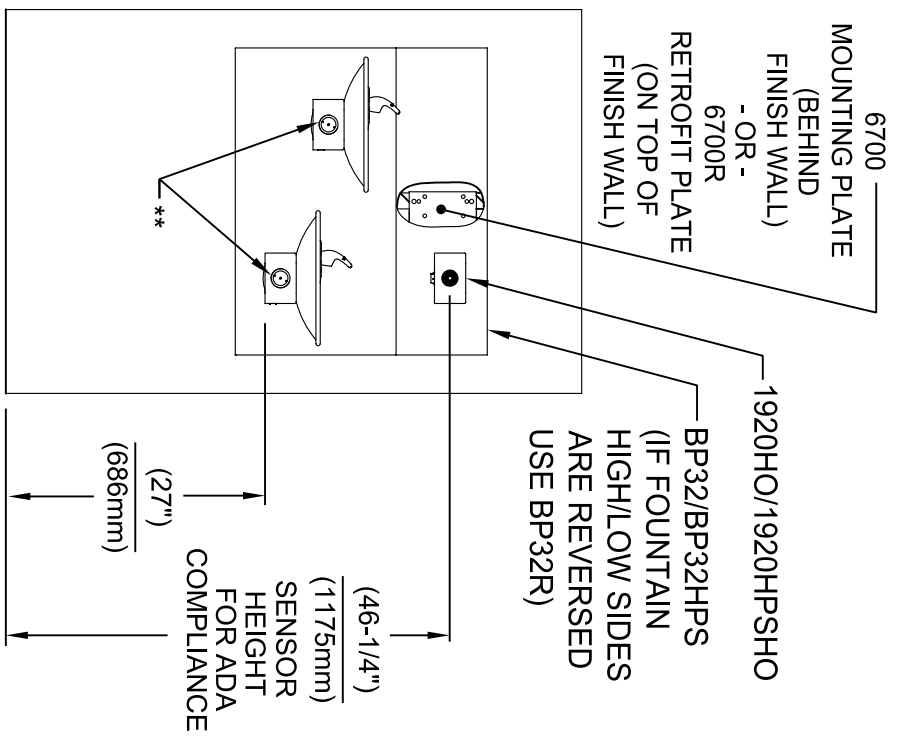


FIG. 6
WATER CONNECTION DIAGRAM

				1455 KLEPPE LANE SPARKS, NEVADA 89431 (775) 359-4712 FAX (775) 359-7424 E-MAIL: HAWS@HAWSO.COM WEBSITE: WWW.HAWSO.COM			
ECN NO. 4997	REVISED PER ECN: 5401	BY DHP	DATE 01/25/16	CHKD DHP	MODEL(S) HCR8 REMOTE CHILLER		PART NUMBER 0580000134.D
DRAWN VWC	DATE 01/25/16	CHKD DHP	DATE 02/05/19	APPROVED JL	SCALE: NA	DRAWING TYPE: INSTALLATION	REVISION 4
						SIZE: A	SHEET 2 OF 2

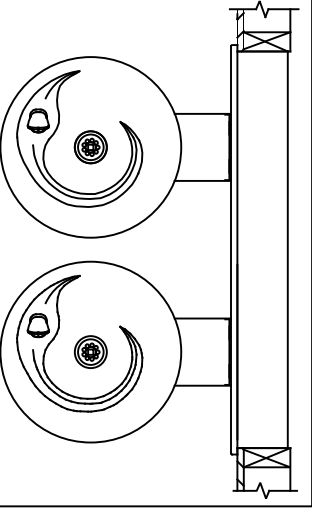


INSTALLATION ABOVE HAWWS 1011 & H1011.8 SERIES

INSTALLATION ABOVE HAWWS 1001 & H1001.8 SERIES

* IF YOUR FOUNTAIN IS THIS STYLE USE THESE DIMENSIONS

1. SEE SEPARATE INSTALLATION DRAWINGS FOR MOUNTING PLATES AND BACK PANELS (SHOWN FOR REFERENCE - NOT SUPPLIED).
2. WHEN INSTALLING THIS UNIT, LOCAL, STATE OR FEDERAL CODES SHOULD BE ADHERED TO FOR INSTALLATION LOCATIONS, WASTE & SUPPLY REQUIREMENTS OTHER THAN SHOWN.



** EXISTING PUSH BUTTON ASSEMBLY SHOWN, CAN BE CONVERTED TO HANDS OFF STYLE, USING RETRO-FIT KIT MODEL 1RKHO.H OR 2RKHO.H DEPENDING ON CUSTOMER REQUIREMENTS.

3/8" O.D. SUPPLY TUBING AND 3/8" O.D. PUSH-IN TEE SUPPLIED. (CONNECT TO FOUNTAIN SUPPLY LINE)



Haws
Since 1906

1455 KLEPPLE LANE
SPARKS, NE/VADA 89431
(775) 359-4712 FAX (775) 359-1424
E-MAIL: HAWS@HAWS.CO.COM
WEBSITE: WWW.HAWS.CO.COM

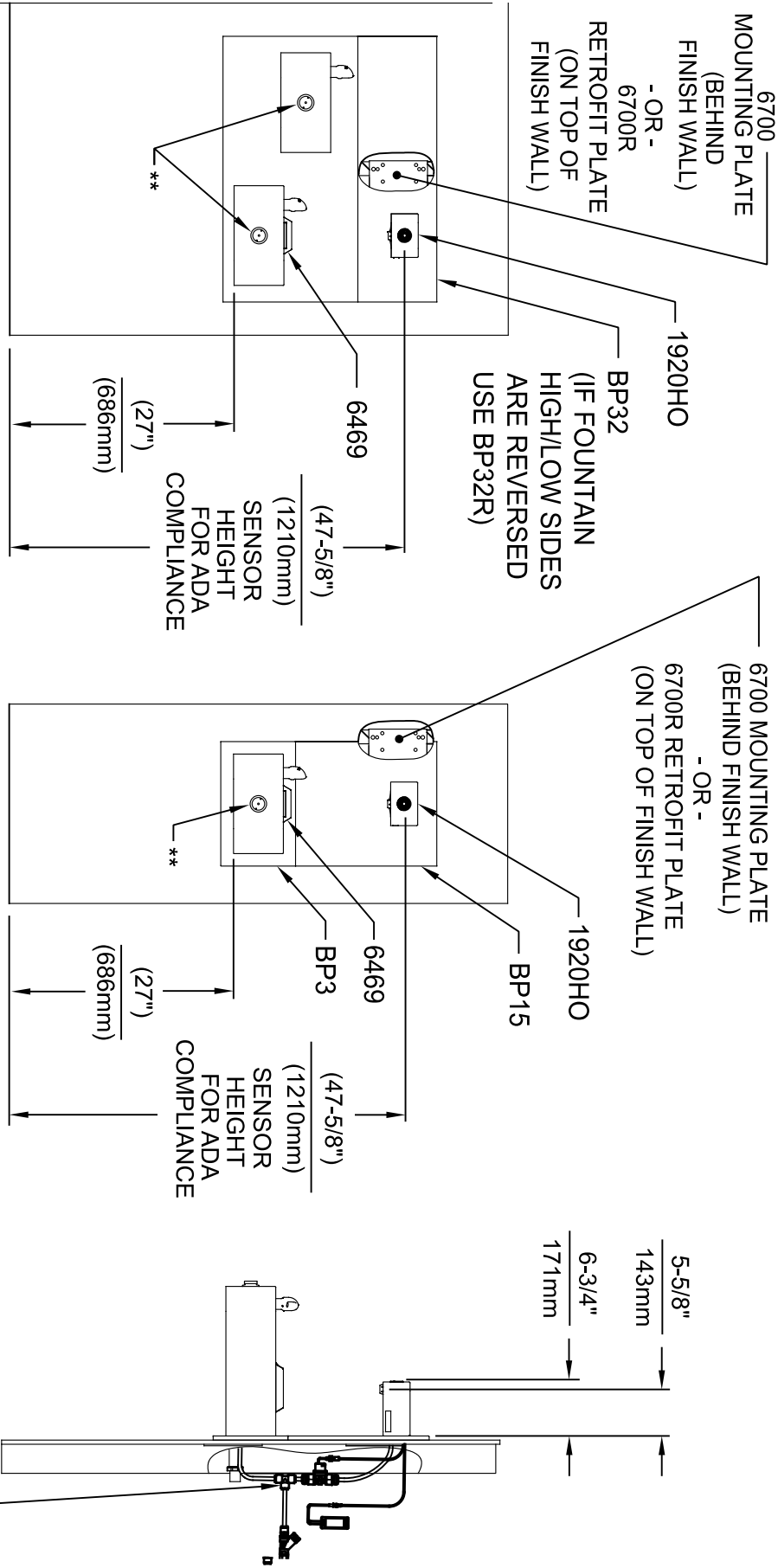
EGN NO. REVISED PERBY: FV
5574 EGN 6136
DRAWN: DATE: CHK'D: FV
FV 08/18/20 KAM

MODEL(S)
1920HO/1920HPSHO/1920WHO

PART NUMBER
0510001063.D

REVISION
8

APPROVED: DATE: SCALE: N/A DRAWING TYPE: INSTALLATION SIZE: A1 SHEET 2 OF 8



INSTALLATION ABOVE HAWS 1119 & H1119.8 SERIES

**INSTALLATION ABOVE HAWS 1109 & H1109.8 SERIES
SEE SHEET 8 FOR INSTALLATION AT CHILD HEIGHT**

* IF YOUR FOUNTAIN IS THIS STYLE USE THESE DIMENSIONS

1. SEE SEPARATE INSTALLATION DRAWINGS FOR MOUNTING PLATES, BACK PANELS AND DRIP TRAY (NOT SUPPLIED).

2. WHEN INSTALLING THIS UNIT, LOCAL, STATE OR FEDERAL CODES SHOULD BE ADHERED TO FOR INSTALLATION LOCATIONS, WASTE & SUPPLY REQUIREMENTS OTHER THAN SHOWN.

** EXISTING PUSH BUTTON ASSEMBLY SHOWN, CAN BE CONVERTED TO HANDS OFF STYLE, USING RETRO-FIT KIT MODEL 1RKHO.H OR 2RKHO.H DEPENDING ON CUSTOMER REQUIREMENTS.

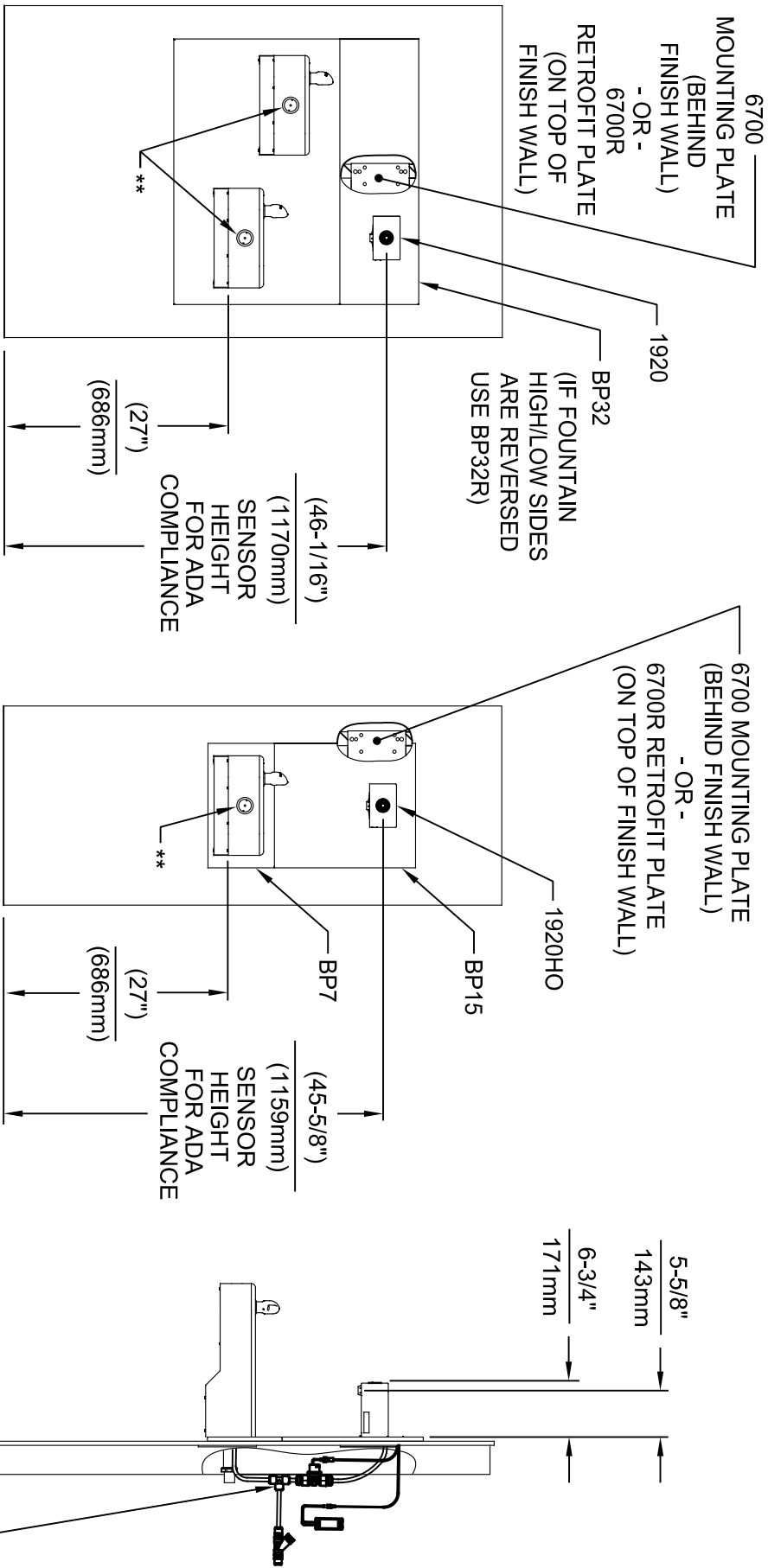
3/8" O.D. SUPPLY TUBING AND 3/8" O.D. PUSH-IN TEE SUPPLIED. (CONNECT TO FOUNTAIN SUPPLY LINE)



Haws®
Since 1906

1455 KLEPPLE LANE
SPARKS, NEVADA 89431
(775) 359-4712 FAX (775) 359-1424
E-MAIL: HAWS@HAWS.CO.COM
WEBSITE: WWW.HAWS.CO.COM

ECN NO. REVISED PERBY:	MODEL(S)	PART NUMBER
5574 ECN 6136	1920HO/1920HPSHO/1920WHO	0510001063.D
DATE: 08/18/20	SCALE: N/A	REVISION
CHKD: KM	DRAWING TYPE:	8
APPROVED: FV	INSTALLATION	SIZE: A1 SHEET 3 OF 8



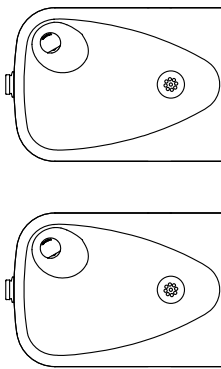
INSTALLATION ABOVE HAWS 1117L & H1117.8 SERIES

**INSTALLATION ABOVE HAWS 1107L & H1107.8 SERIES
SEE SHEET 8 FOR INSTALLATION AT CHILD HEIGHT**

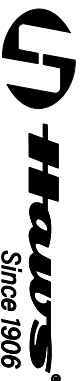
* IF YOUR FOUNTAIN IS THIS STYLE USE THESE DIMENSIONS

1. SEE SEPARATE INSTALLATION DRAWINGS FOR MOUNTING PLATES AND BACK PANELS (SHOWN FOR REFERENCE - NOT SUPPLIED).

2. WHEN INSTALLING THIS UNIT, LOCAL, STATE OR FEDERAL CODES SHOULD BE ADHERED TO FOR INSTALLATION LOCATIONS, WASTE & SUPPLY REQUIREMENTS OTHER THAN SHOWN.

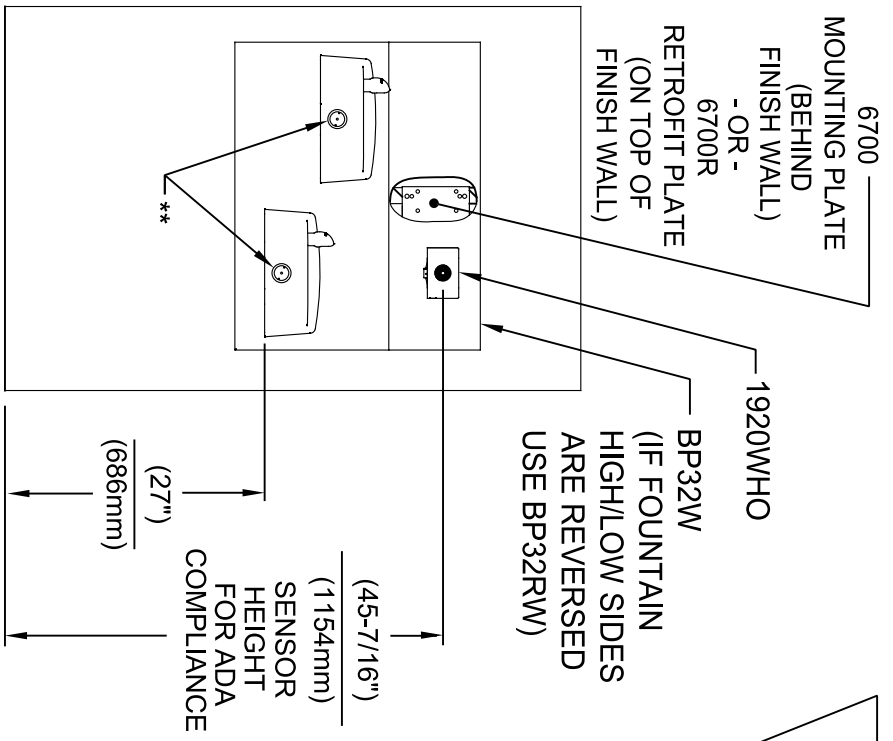


** EXISTING PUSH BUTTON ASSEMBLY SHOWN, CAN BE CONVERTED TO HANDS OFF STYLE, USING RETRO-FIT KIT MODEL 1RKHO.H OR 2RKHO.H DEPENDING ON CUSTOMER REQUIREMENTS.

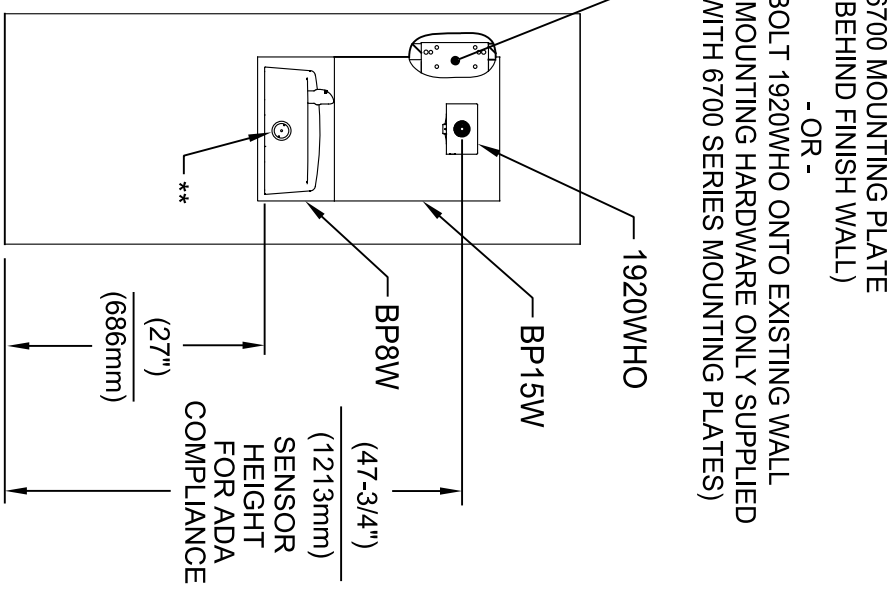


ECON. NO. REVISED PERBY:		MODEL(S)		SCALE: N/A		DRAWING TYPE:		INSTALLATION	
5574	ECON. 6136	FV	1920HO/1920HPSHO/1920WHO	1/16" & 2/32"	N/A	11/16" & 2/32"	11/16" & 2/32"	SIZE: A1	SHEET: 4 OF 8
DRAWN:		DATE:	CHKD:	PART NUMBER		REVISION			
FV		08/18/20	KAM	0510001063.D					
APPROVED:		DATE:	11/16/24						

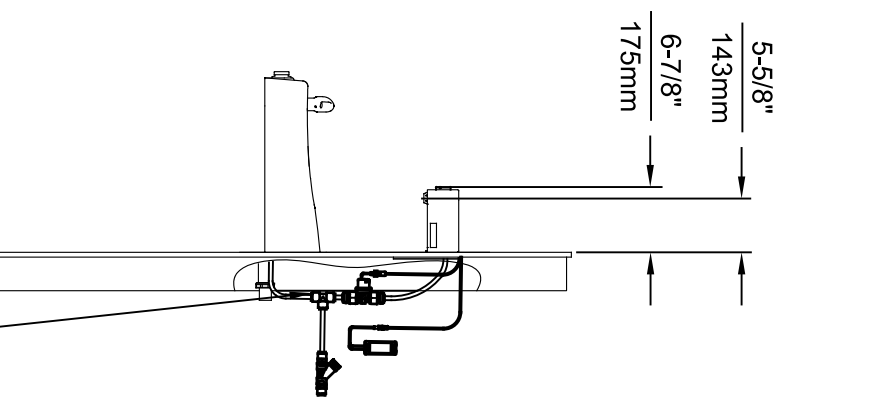
1455 KLEPPLE LANE
SPARKS, NEVADA 89431
(775) 359-4712 FAX (775) 359-1424
E-MAIL: HAWS@HAWS.CO.COM
WEBSITE: WWW.HAWS.CO.COM



INSTALLATION ABOVE HAWS 1501

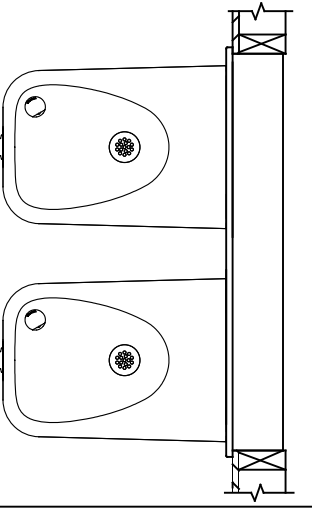


INSTALLATION ABOVE HAWS 1311
SEE SHEET 8 FOR INSTALLATION AT CHILD HEIGHT



* IF YOUR FOUNTAIN IS THIS STYLE USE THESE DIMENSIONS

1. SEE SEPARATE INSTALLATION DRAWINGS FOR MOUNTING PLATES AND BACK PANELS (SHOWN FOR REFERENCE - NOT SUPPLIED).
2. WHEN INSTALLING THIS UNIT, LOCAL, STATE OR FEDERAL CODES SHOULD BE ADHERED TO FOR INSTALLATION LOCATIONS, WASTE & SUPPLY REQUIREMENTS OTHER THAN SHOWN.



** EXISTING PUSH BUTTON ASSEMBLY SHOWN, CAN BE CONVERTED TO HANDS OFF STYLE, USING RETRO-FIT KIT MODEL 1RKHO.H OR 2RKHO.H DEPENDING ON CUSTOMER REQUIREMENTS.

3/8" O.D. SUPPLY TUBING AND 3/8" O.D. PUSH-IN TEE SUPPLIED. (CONNECT TO FOUNTAIN SUPPLY LINE)



HAWS
Since 1906

1455 KLEPPER LANE
SPARKS, NEVADA 89431
(775) 359-4712 FAX (775) 359-1424
E-MAIL: HAWS@HAWS.CO.COM
WEBSITE: WWW.HAWS.CO.COM

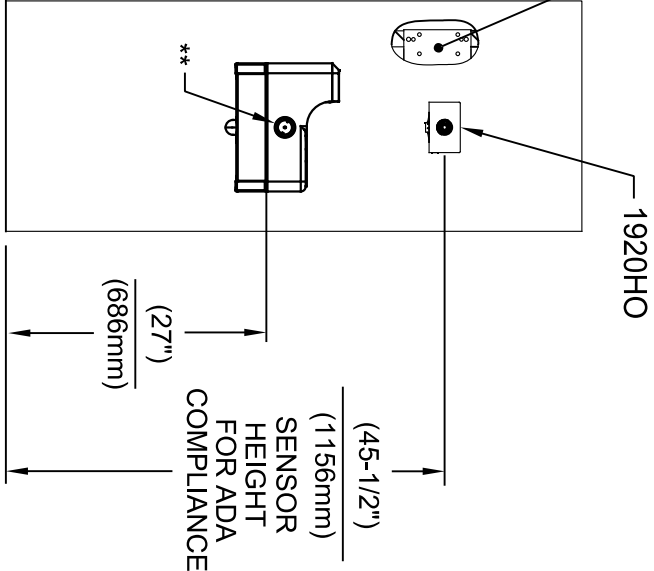
ECN NO. REVISED PERBY: 5574
DATE: 08/18/20
FV: KM

MODEL(S): 1920HO/1920HPSHO/1920WHO

PART NUMBER: 0510001063.D
REVISION: 8

APPROVED: DATE: SCALE: N/A DRAWING TYPE: INSTALLATION SIZE: A1 SHEET: 5 OF 8

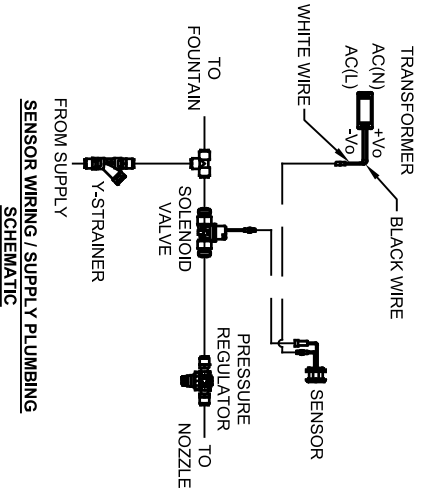
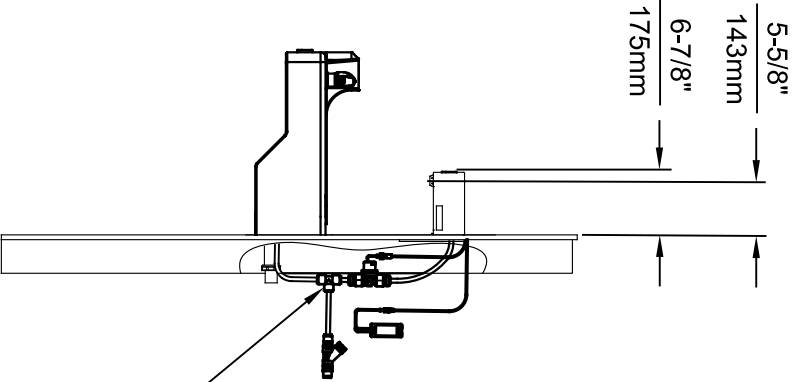
6700 MOUNTING PLATE
(BEHIND FINISH WALL)
- OR -
BOLT 1920HO ONTO EXISTING WALL
(MOUNTING HARDWARE ONLY SUPPLIED
WITH 6700 SERIES MOUNTING PLATES)



INSTALLATION ABOVE HAWS 1047

* IF YOUR FOUNTAIN IS THIS STYLE USE
THESE DIMENSIONS

1. SEE SEPARATE INSTALLATION DRAWINGS
FOR MOUNTING PLATES AND BACK PANELS
(SHOWN FOR REFERENCE - NOT SUPPLIED).
2. WHEN INSTALLING THIS UNIT, LOCAL,
STATE OR FEDERAL CODES SHOULD
BE ADHERED TO FOR INSTALLATION
LOCATIONS, WASTE & SUPPLY
REQUIREMENTS OTHER THAN SHOWN.



3/8" O.D. SUPPLY
TUBING AND 3/8" O.D.
PUSH-IN TEE SUPPLIED.
(CONNECT TO FOUNTAIN
SUPPLY LINE)

** EXISTING PUSH BUTTON
ASSEMBLY SHOWN, CAN
BE CONVERTED TO HANDS
OFF STYLE, USING RETRO-
FIT KIT MODEL 1RKHO.H.



Haws
Since 1906

1455 KLEPPLE LANE
SPARKS, NEVADA 89431
(775) 359-4712 FAX (775) 359-1424
E-MAIL: HAWS@HAWS.CO.COM
WEBSITE: WWW.HAWS.CO.COM

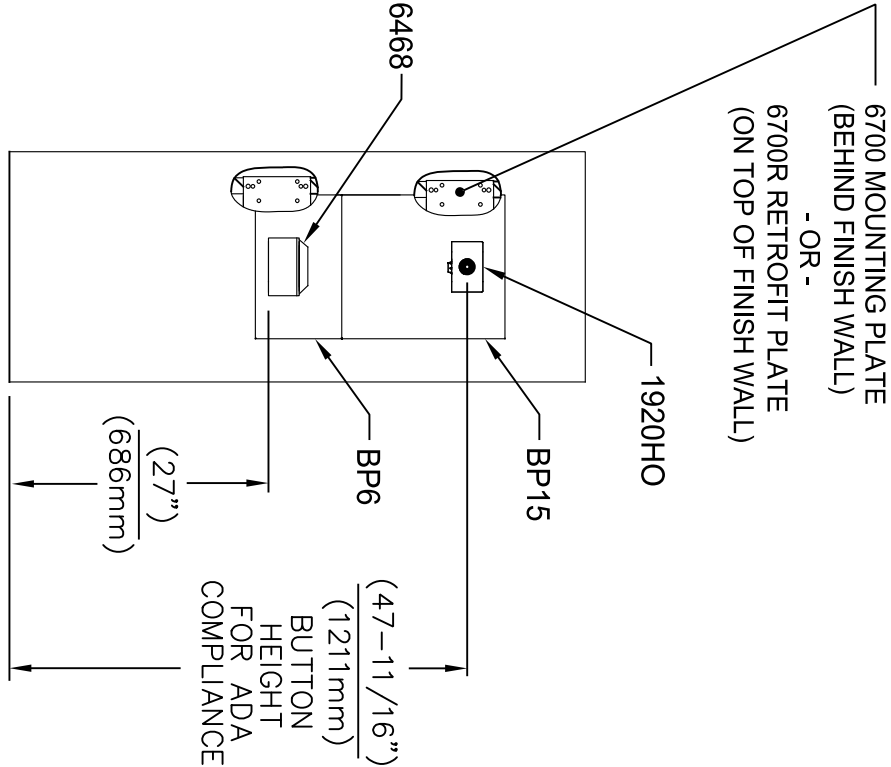
EGN NO. REVISED PERBY: FV
5574 EGN 6136 FV
DRAWN: DATE: CHKD: KM
FV 08/18/20

MODEL(S)
1920HO/1920HPSHO/1920WHO

SCALE: N/A DRAWING TYPE: INSTALLATION

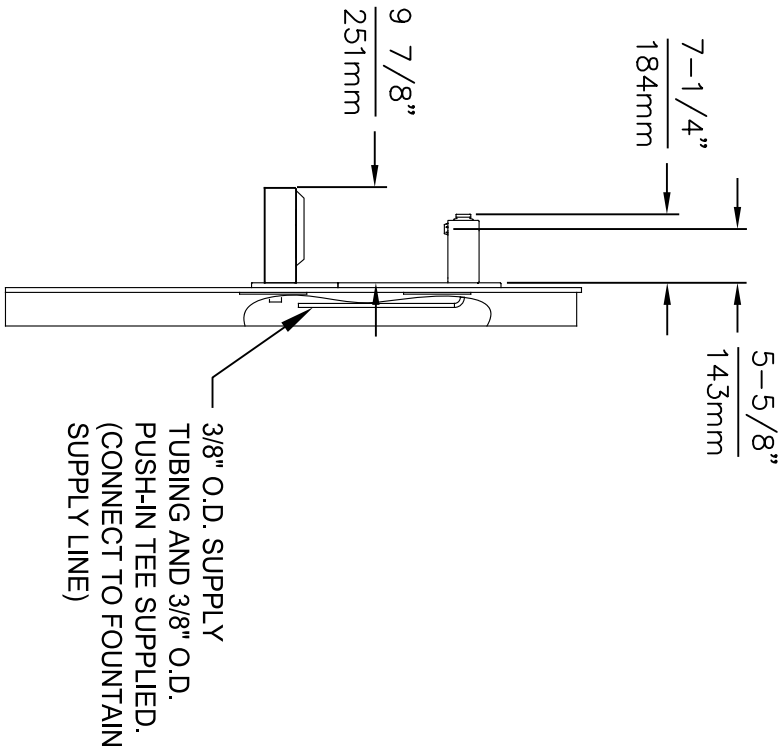
SIZE: A1 SHEET: 6 OF 8


PART NUMBER
0510001063.D
REVISION: 8



INSTALLATION ABOVE 6468

1. SEE SEPARATE INSTALLATION DRAWINGS FOR MOUNTING PLATES AND BACK PANELS (SHOWN FOR REFERENCE - NOT SUPPLIED).
2. WHEN INSTALLING THIS UNIT, LOCAL, STATE OR FEDERAL CODES SHOULD BE ADHERED TO FOR INSTALLATION LOCATIONS, WASTE & SUPPLY REQUIREMENTS OTHER THAN SHOWN.

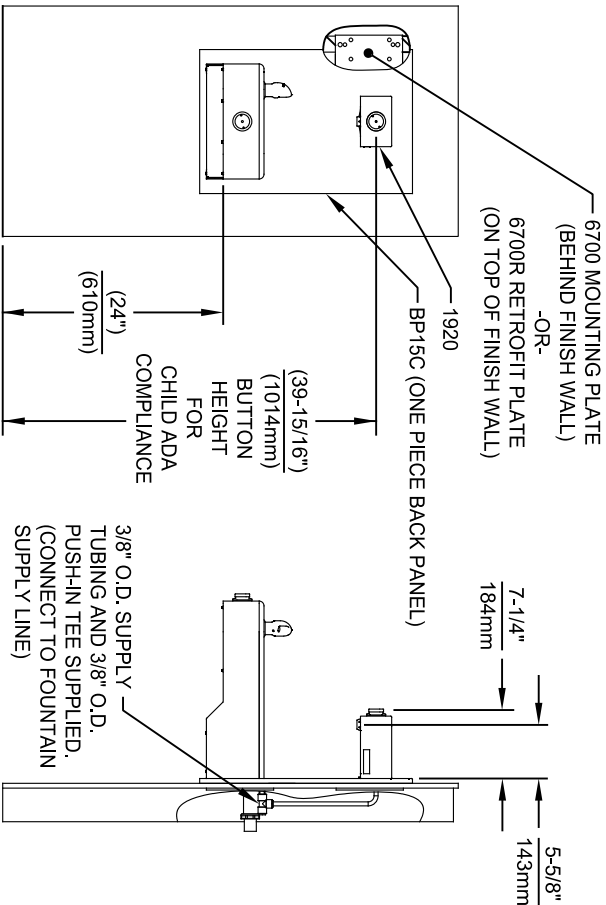




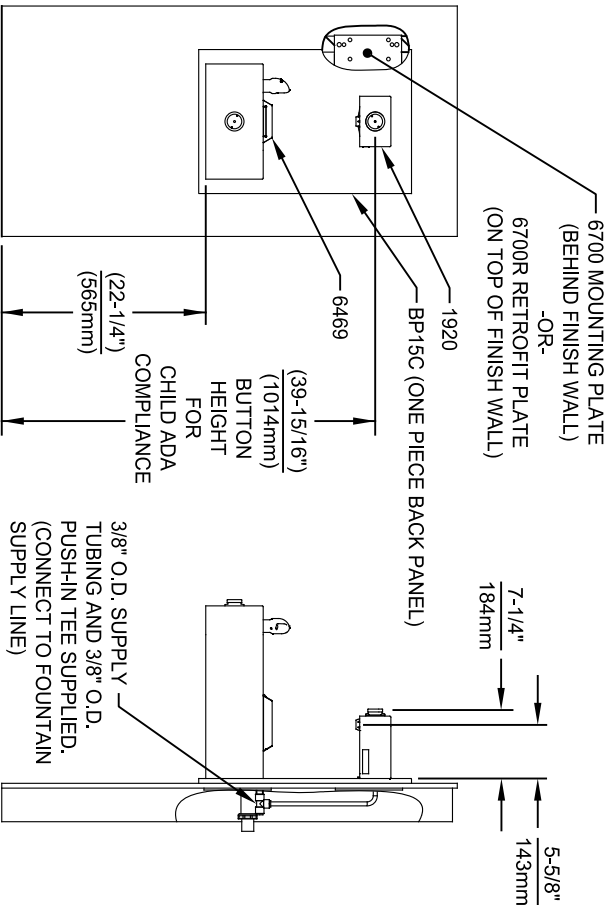
Haws®
Since 1906

1455 KLEPPLE LANE
SPARKS, NEVADA 89431
(775) 359-4712 FAX (775) 359-1424
E-MAIL: HAWS@HAWS.CO.COM
WEBSITE: WWW.HAWS.CO.COM

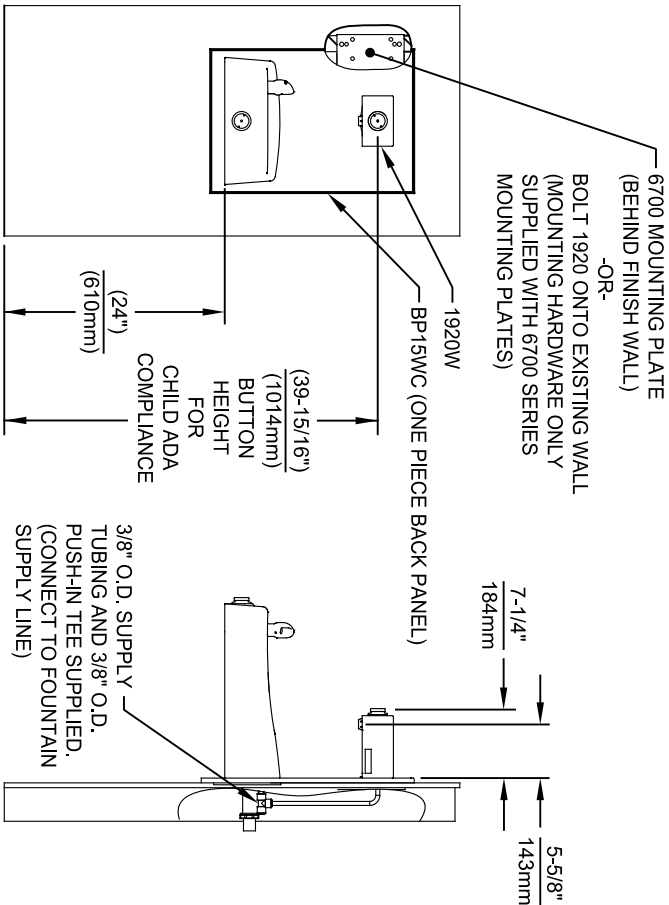
EON NO. REVISED PERBY:		MODEL(S)	
5744	EON 6136	1920HO/1920HPSHO/1920WHO	
DRAWN:	DATE:	CHKD:	
FV	10/04/21	KML	
APPROVED:	DATE:	SCALE:	DRAWING TYPE:
FV	11/04/24	N/A	INSTALLATION
SIZE: A1		SHEET 7 OF 8	
PART NUMBER		REVISION	
0510001063.D		8	



INSTALLATION ABOVE HAWS 1107L & H1107.8 SERIES



INSTALLATION ABOVE HAWS 1109, 1109.14 & H1109.8 SERIES
MUST USE PARALLEL APPROACH WITH THIS BOWL COMBINATION



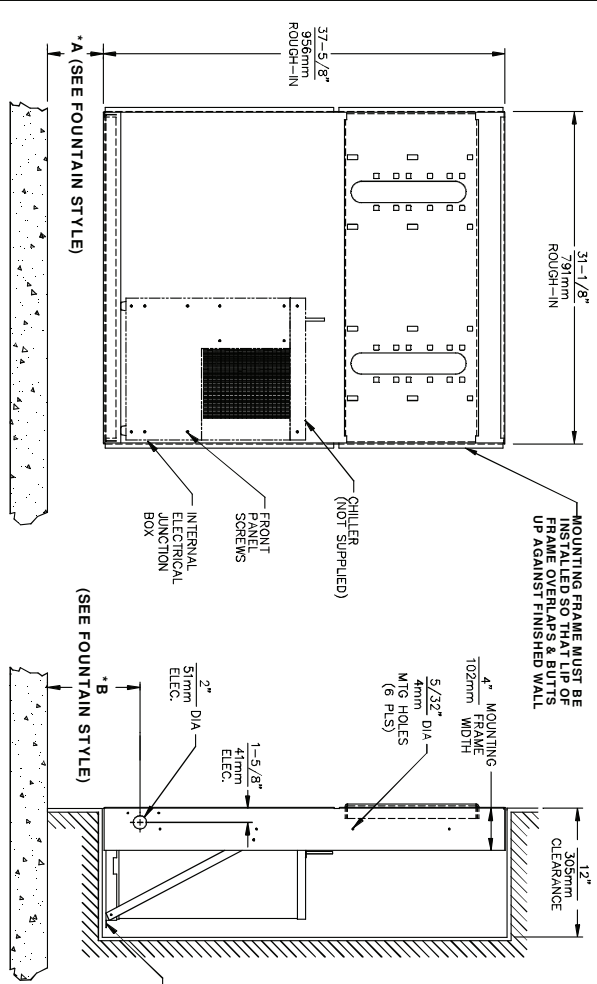
INSTALLATION ABOVE HAWS 1311

NOTES:

1. HEIGHT DIMENSIONS SHOWN ARE FOR CHILD ADA APPLICATIONS:
 - BOTTLE FILLER HEIGHT AT 40" MAX.
 - DRINKING FOUNTAIN BUBBLER HEIGHT AT 30" MAX.
 - (SEE SHEETS 3, 4 & 5 FOR ADULT ADA HEIGHT DIMENSIONS)
2. SEE SEPARATE INSTALLATION DRAWINGS FOR MOUNTING PLATES AND BACK PANELS (SHOWN FOR REFERENCE - NOT SUPPLIED).
3. WHEN INSTALLING THIS UNIT, LOCAL, STATE OR FEDERAL CODES SHOULD BE ADHERED TO FOR INSTALLATION LOCATIONS, WASTE & SUPPLY REQUIREMENTS OTHER THAN SHOWN.



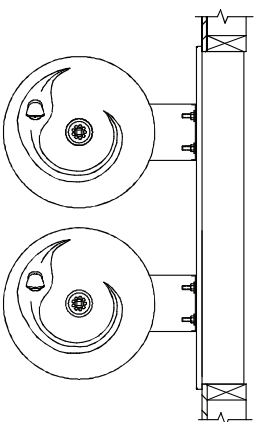
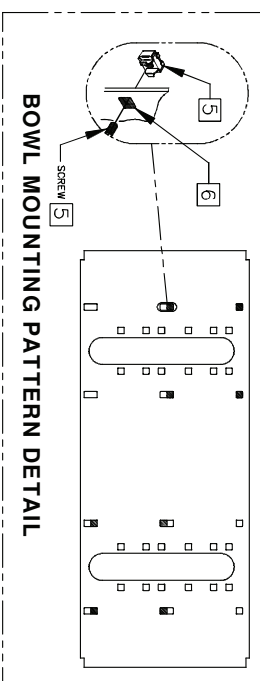
ECON. NO. REVISED PERBY:		MODEL(S)		1455 KLEPPER LANE	
5744	ECON. 6136	FV		SPARKS, NE/ADA 89431	
DRAWN:	DATE:	CHKD:		(773) 359-4712 FAX (773) 359-1424	
FV	02/26/24	KAM		E-MAIL: HAWS@HAWS.CO.COM	
APPROVED:	DATE:	SCALE:	N/A	WEBSITE: WWW.HAWS.CO.COM	
FV	11/04/24			PART NUMBER	
				1920H0/1920HPSHO/1920WH0	
				0510001063.D	
				REVISION	
				8	
				8 OF 8	



- CHILLER ELECTRICAL INSTALLATION**
1. ENSURE ELECTRICAL POWER IS OFF AND POWER MATCHES VOLTAGE, PHASE AND CYCLE LISTED ON CHILLER LABEL.
 2. REMOVE FRONT PANEL TO GAIN ACCESS TO INTERNAL JUNCTION BOX.
 3. HARDWIRE CHILLER THROUGH ITS SIDE, IN ACCORDANCE WITH LOCAL, STATE OR FEDERAL CODES.
 4. REPLACE FRONT PANEL. DO NOT APPLY POWER UNTIL WATER SUPPLY IS CONNECTED AND ON.

MOUNTING FRAME INSTALLATION

1. THIS FRAME IS USED WITH SEVERAL DIFFERENT MODELS. SEE INSTALLATION INSTRUCTIONS RECEIVED WITH THE FOUNTAIN FOR PROPER LOCATIONS OF 5/16-18 PANEL NUT RETAINERS. FOR ROUGH-IN USE THE APPROPRIATE DIMENSIONS SHOWN ABOVE. WASTE AND SUPPLY HEIGHTS ARE ALSO DETAILED ON THE FOUNTAIN INSTALLATION INSTRUCTIONS.
2. HOLD ROUGH-IN DIMENSIONS $\pm 1/8"$ (3.2mm).
3. WHEN INSTALLING THIS UNIT LOCAL, STATE OR FEDERAL CODES SHOULD BE ADHERED TO. FOR DIFFERENT INSTALLATION HEIGHTS, OTHER THAN SHOWN, DIMENSIONS MARKED (*) MUST BE ADJUSTED ACCORDINGLY.
4. ALIGN HOLES IN CHILLER SUPPORT TRAY WITH HOLES IN FRAME AND FASTEN IN PLACE WITH #10 SHEET-METAL SCREWS SUPPLIED WITH UNIT.
5. FOUNTAIN REMOVAL: FIRST REMOVE SCREWS AND THEN SQUEEZE CLIPS ON NUT RETAINER TO POP OUT. INSTALL IS REVERSE OF REMOVAL.
6. HOLE COMBINATION SHOWN ABOVE IS FOR USE WITH LOW FOUNTAIN ON THE RIGHT AND HIGH FOUNTAIN ON THE LEFT. USE OPPOSITE HOLES FOR HIGH ON RIGHT AND LOW ON LEFT.
7. IMPORTANT: A L.H. LOW (OPTIONAL) CONFIGURATION WILL REQUIRE A DIFFERENT BACK PANEL AND THE WASTE AND SUPPLY DIMENSIONS SHOWN (*) MUST BE REVERSED.

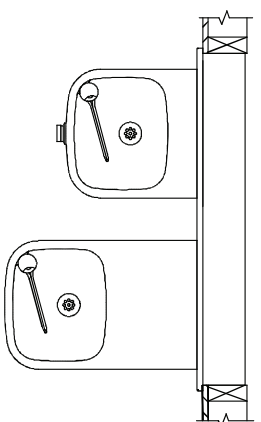


*** IF YOUR FOUNTAIN IS THIS STYLE
USE THESE DIMENSIONS**

A	B
2-1/4" (57mm)	5-3/4" (146mm)

*** IF YOUR FOUNTAIN IS THIS STYLE
USE THESE DIMENSIONS**

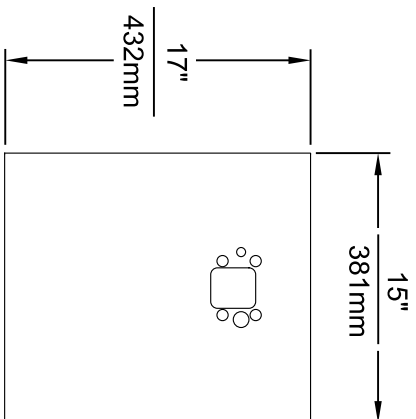
A	B
3-15/16" (100mm)	7-7/16" (189mm)



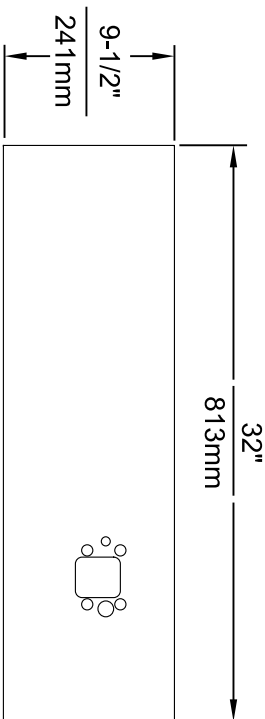
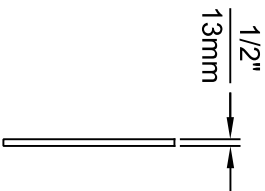
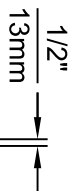
INFO FAX : 1-888-FAX-HAWS (1-888-329-4297)
 1455 Kieppe Ln, Sparks NV, 89431
 Phone: 775-329-6712 Fax: 775-329-7424
 Haws Mtg. P.O. Box 3001, Boulder, CO 80501
 Haws Mtg. P.O. Box 3001, Boulder, CO 80501
 e-mail: Haws@hawsco.com website: www.hawsco.com

ECR NO. 1 DATE 06/97 APPROVED: D. ZHOU	REVISIONS REV. 1 DATE 06/97 APPROVED: D. ZHOU	MODEL(S): MTGFR-LG MOUNTING FRAME DUAL INFO FAX DOC # 2654	PART NUMBER: 0002080318 DRAWING NUMBER: 06665A00
--	--	--	---

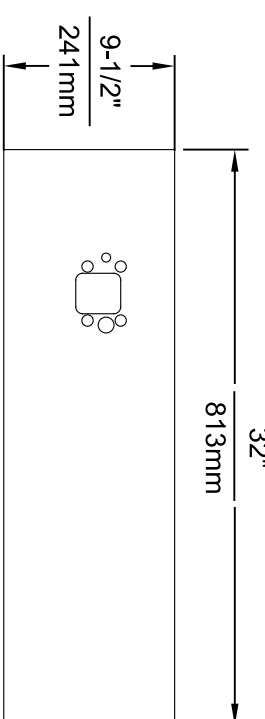
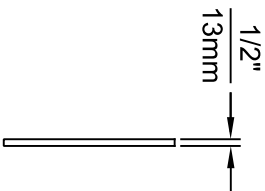
SCALE: 1/16" = 1"



MODEL BP15 / BP15HPS / BP15W

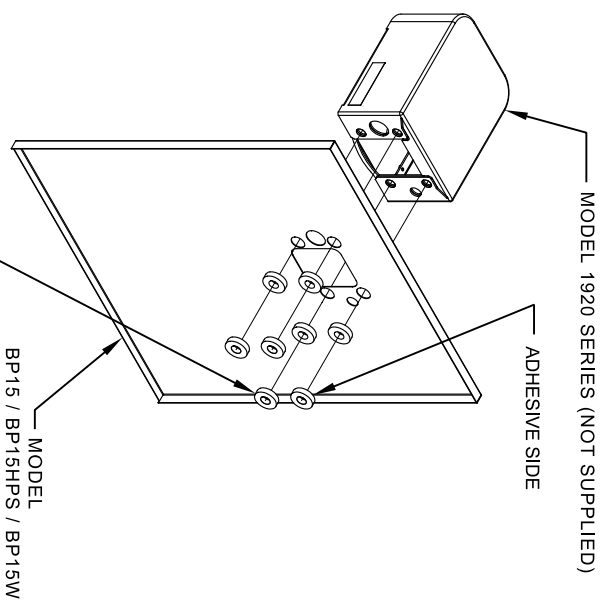


MODEL BP32 / BP32HPS / BP32W



MODEL BP32R / BP32RW

- NOTES:
1. WHEN INSTALLING THIS UNIT, LOCAL, STATE OR FEDERAL CODES SHOULD BE ADHERED TO.
 2. BOTTLE FILLER SHOWN FOR REFERENCE ONLY (NOT SUPPLIED).



8 SPACERS (2 PER MOUNTING BOLT IF THE MOUNTING PLATE (MODEL 6700 - NOT SUPPLIED) IS INSTALLED BEHIND THE FINISHED WALL. USE 1 SPACER PER BOLT FOR RETROFITS WHERE THE MOUNTING PLATE (MODEL 6700R - NOT SUPPLIED) IS INSTALLED IN FRONT OF THE FINISHED WALL)

INSTALLATION OVER SINGLE FOUNTAIN

SHOWN FROM REAR

(SEE SHEET 3 OF 3 FOR INSTALLATION OF SPACERS ON COMBINATION BOTTLE FILLER AND FOUNTAIN BACK PANELS FOR CHILD HEIGHT APPLICATIONS - MODELS BP15C & BP15WC)



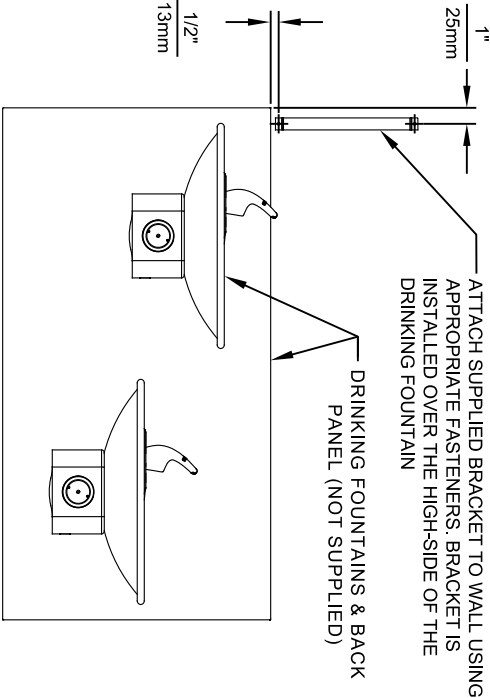
Haws
Since 1906

1455 KLEPPLE LANE
SPARKS, NEVADA 89431
(775) 359-4712 FAX (775) 359-1424
E-MAIL: HAWS@HAWS.CO.COM
WEBSITE: WWW.HAWS.CO.COM

ECON. NO. REVISED PERBY:		MODEL(S)		PART NUMBER	
5061	ECON. 5972	FV	DRAWING, BACK PANEL, SPACER INSTALLATION	0510000493	
DRAWN:	DATE:	CHKD:	FOR BP15 SERIES & BP32 SERIES, BOTTLE FILLER	REVISION	
ML	06/27/16	JC		5	
APPROVED:	DATE:	SCALE:	DRAWING TYPE:	INSTALLATION	SIZE: A1 SHEET: 1 OF 3
FV	04/19/24	1:1			

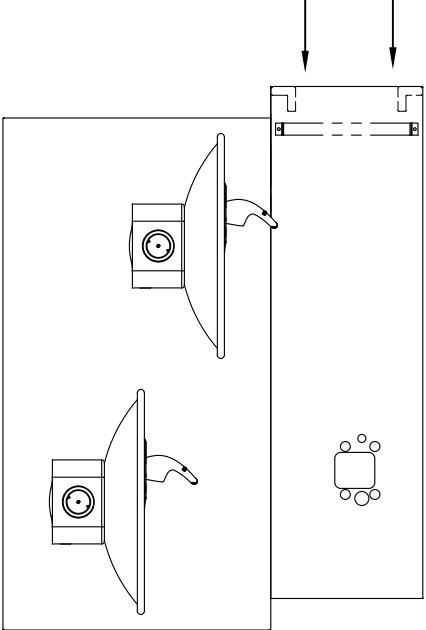
STEP 1

ATTACH SUPPLIED BRACKET TO WALL USING APPROPRIATE FASTENERS. BRACKET IS INSTALLED OVER THE HIGH-SIDE OF THE DRINKING FOUNTAIN



STEP 2

PLACE THE BACKPLATE AGAINST THE WALL AND SLIDE SIDEWAYS SO THE TABS CATCH UNDER THE BRACKET.

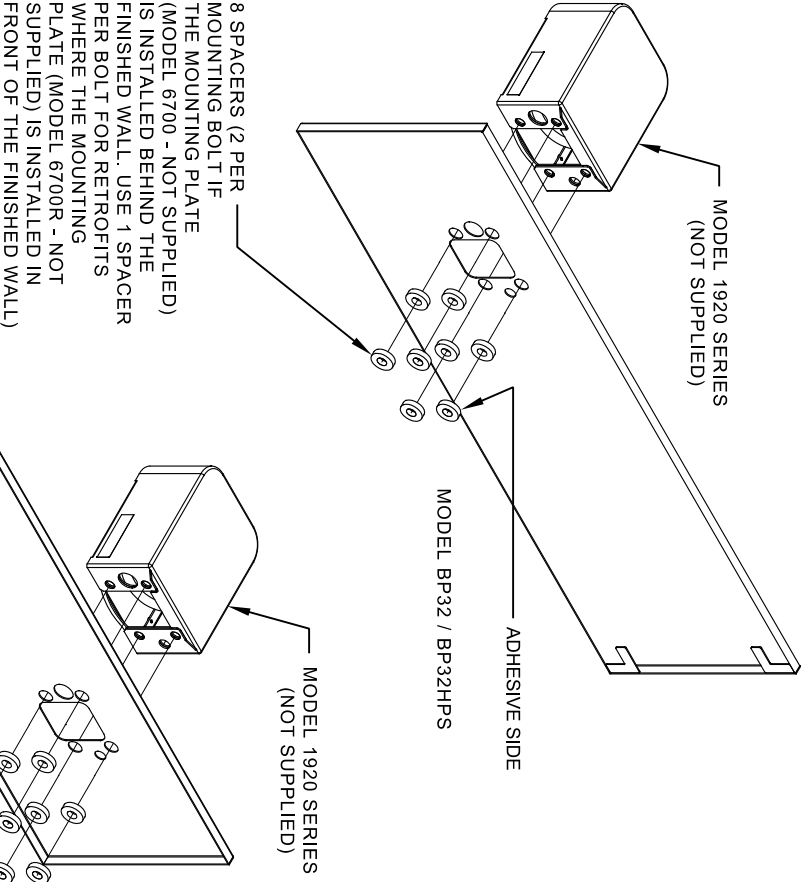


STEP 3

INSTALL THE BOTTLE FILLER (NOT SUPPLIED) PER THE INSTRUCTIONS SUPPLIED WITH THE UNIT.

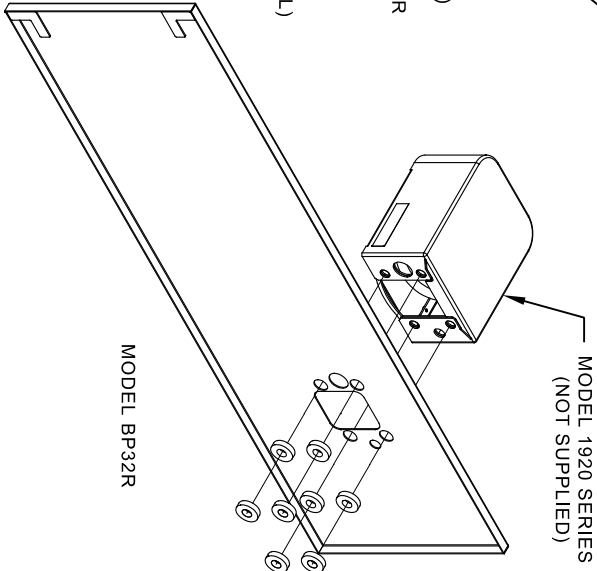
NOTES:

1. WHEN INSTALLING THIS UNIT, LOCAL, STATE OR FEDERAL CODES SHOULD BE ADHERED TO.
2. BOTTLE FILLERS, DRINKING FOUNTAINS & DRINKING FOUNTAIN BACK PANELS SHOWN FOR REFERENCE ONLY (NOT SUPPLIED).



INSTALLATION OVER DOUBLE FOUNTAIN

SHOWN FROM REAR

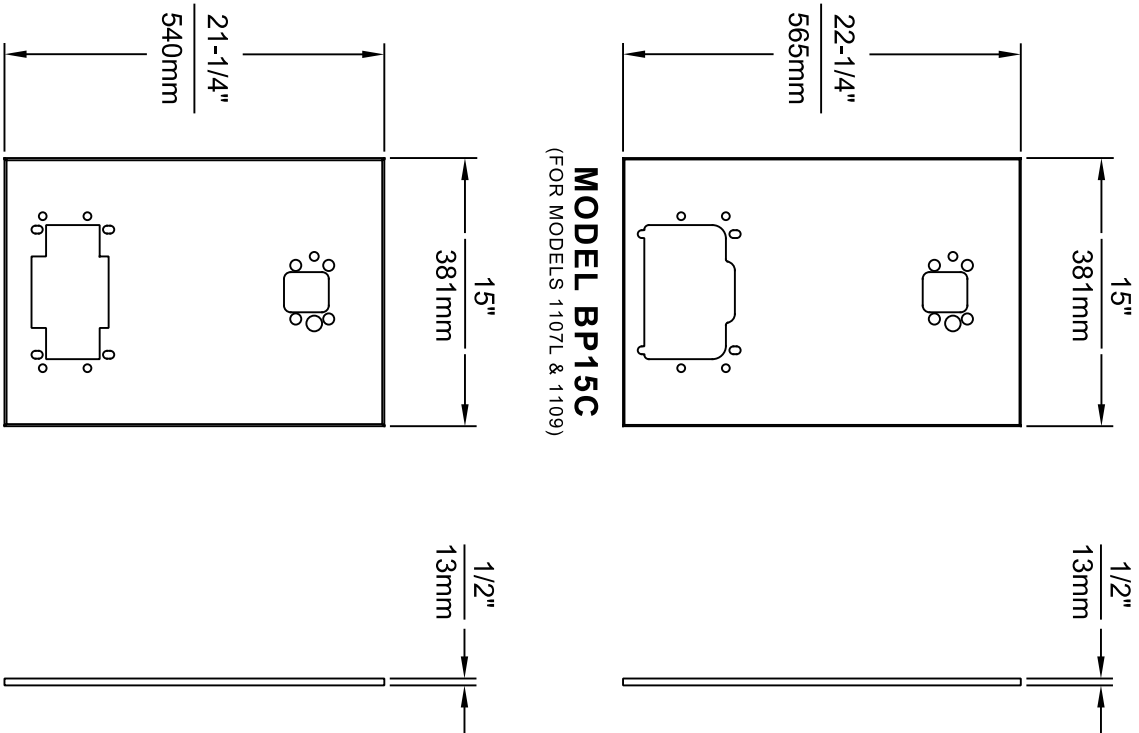




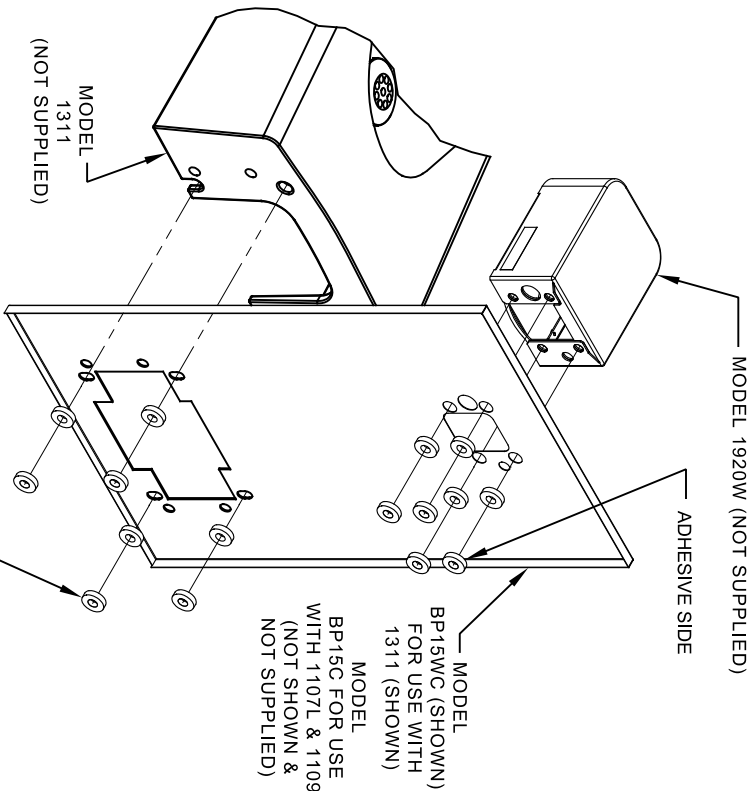
Haws
Since 1906

1455 KLEPPLE LANE
SPARKS, NEVADA 89431
(775) 359-4712 FAX (775) 359-1424
E-MAIL: HAWS@HAWS.CO.COM
WEBSITE: WWW.HAWS.CO.COM

ECON. NO. REVISED PERBY:		MODEL(S)		PART NUMBER	
5081	ECON. 5972	FV	DRINKING, BACK PANEL, SPACER INSTALLATION	0510000493	REVISION
DATE	CHKD.	DATE	FOR BP15 SERIES & BP32 SERIES, BOTTLE FILLER	5	
02/02/17	JC	04/19/24	SCALE: 1"1	DRAWING TYPE: INSTALLATION	SIZE: A1 SHEET: 2 OF 3
APPROVED:	FV	SCALE: 1"1	DRAWING TYPE: INSTALLATION	SIZE: A1	SHEET: 2 OF 3



- NOTES:
1. WHEN INSTALLING THIS UNIT, LOCAL, STATE OR FEDERAL CODES SHOULD BE ADHERED TO.
 2. BOTTLE FILLER AND DRINKING FOUNTAIN SHOWN FOR REFERENCE ONLY (NOT SUPPLIED).



16 SPACERS (2 PER MOUNTING BOLT IF BOTH MOUNTING PLATES (MODEL 6700 - NOT SUPPLIED) ARE INSTALLED BEHIND THE FINISHED WALL. USE 1 SPACER PER BOLT FOR RETROFITS WHERE BOTH MOUNTING PLATES (MODEL 6700R - NOT SUPPLIED) ARE INSTALLED IN FRONT OF THE FINISHED WALL)

ONE PIECE INSTALLATION ON SINGLE FOUNTAIN


SHOWN FROM REAR

(MODEL BP15C & BP15WC ARE COMBINATION BOTTLE FILLER AND FOUNTAIN BACK PANELS USED FOR CHILD HEIGHT APPLICATIONS ONLY ON MODELS 1107L, 1109 & 1311 - BOTTLE FILLER & DRINKING FOUNTAIN NOT SUPPLIED)

 Since 1906				1455 KLEPPER LANE SPARKS, NEVADA 89431 (775) 359-4712 FAX (775) 359-4242 E-MAIL: HAWS@HAWS.CO.COM WEBSITE: WWW.HAWS.CO.COM							
ECON. NO. / REVISED PER BY:				MODEL(S)				PART NUMBER			
9972		ECON. 9972		FV				DRAWING, BACK PANEL, SPACER INSTALLATION		0510000493	
DRAWN:		DATE:		CHK'D:							
12/13/23		12/13/23		JC							
APPROVED:		DATE:									
FV		04/15/24									
		SCALE: 1" = 1'		DRAWING TYPE:		INSTALLATION		SIZE: A		SHEET 3 OF 3	
										REVISION 5	

6700 INDEX

INSTALLATION WITH:	TYPICAL USES	SEE SHEET ...
GENERAL INSTALLATION	IMPORTANT INFORMATION FOR ALL INSTALLATIONS	3 OF 6
1001 BOWLS	HAWS SERIES 1001X, 1001.8X	3 OF 6
1107 BOWLS	HAWS SERIES 1107X, 1107.8X	3 OF 6
1109 BOWLS	HAWS SERIES 1109X, 1109.8X	3 OF 6
1047 BOWLS	HAWS SERIES 1047	4 OF 6
1011 BOWLS	HAWS SERIES 1011X, 1011.8X	4 OF 6
1119 BOWLS	HAWS SERIES 1119X, 1119.8X	4 OF 6
1117 BOWLS	HAWS SERIES 1117X, 1117.8X	5 OF 6
1311 BOWLS	HAWS SERIES 1311	5 OF 6
1501 BOWLS	HAWS SERIES 1501	5 OF 6
CHILD HEIGHT	HAWS 1107PCH, 1109PCH, 1311PCH	6 OF 6



Haws

Since 1906

1455 KLEPPE LANE
SPARKS, NEVADA 89431
(775) 359-4712 FAX (775) 359-7424
E-MAIL: HAWS@HAWSCO.COM
WEBSITE: WWW.HAWSCO.COM

ECN NO. REVISED PER BY:
DRAWN: JG DATE: JG
CHKD: JG

MODEL(S)
67/00

PART NUMBER
0002080016

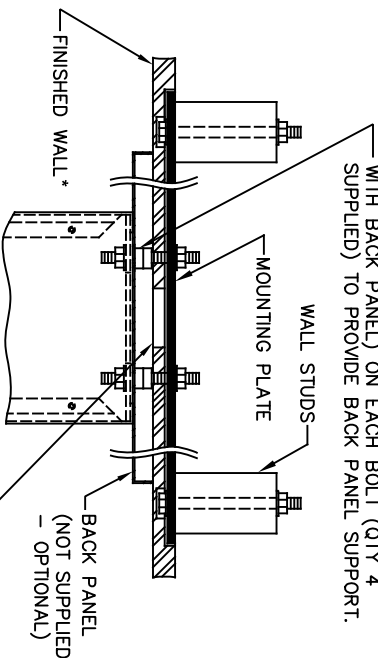
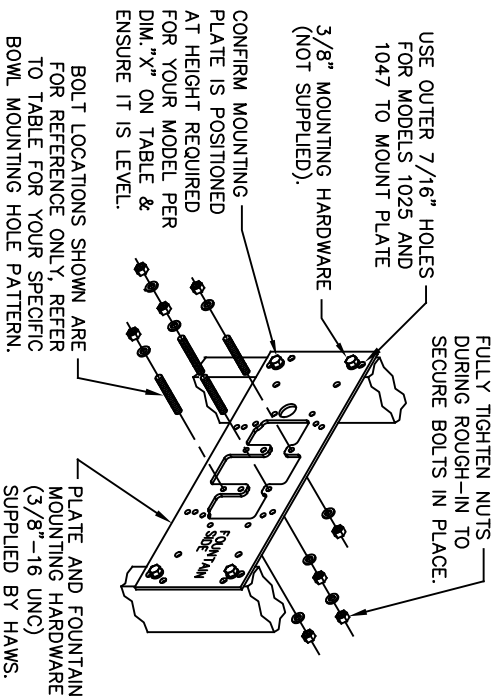
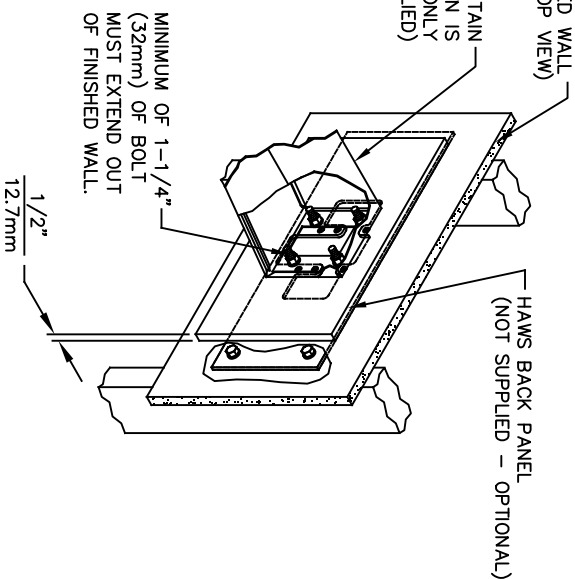
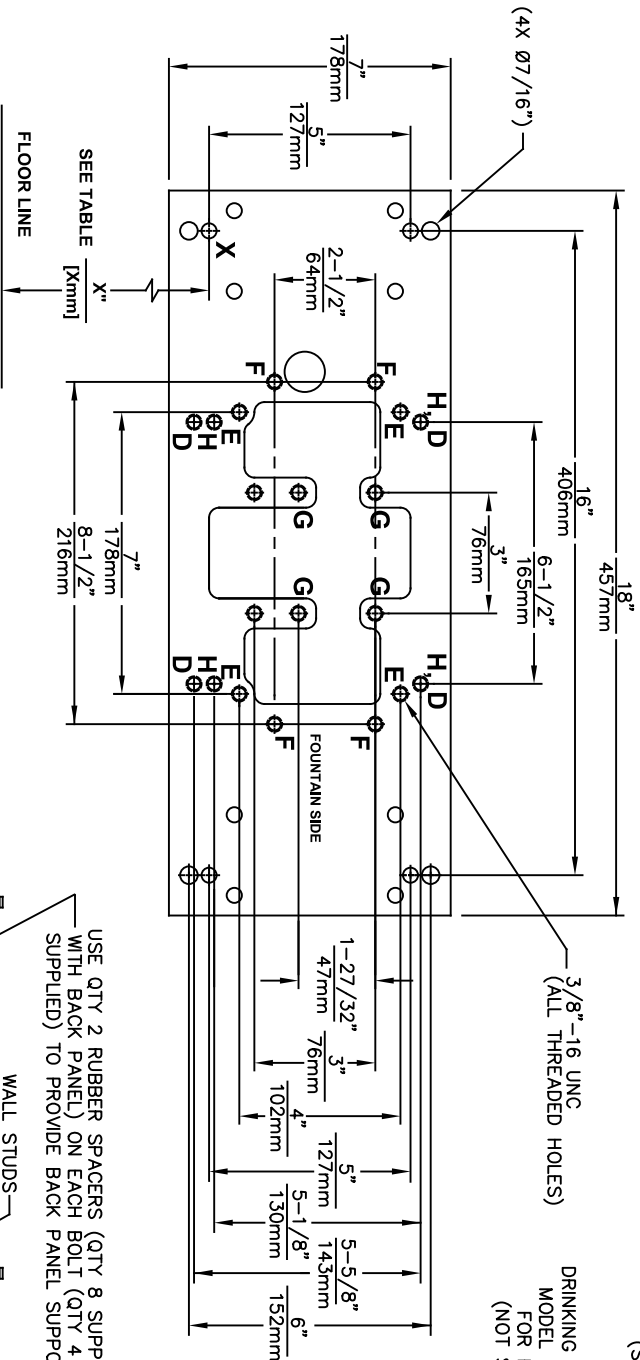
APPROVED: FV DATE: 02/11/25

SCALE: N/A DRAWING TYPE:

INSTALLATION

SIZE: A SHEET 1 OF 6

REVISION
26



DRINKING FOUNTAIN (ONLY) AT 27" ADULT HEIGHT (SEE SPECIFIC MODEL O&M'S FOR OTHER HEIGHTS)			
MODEL	USE BOWL MTG. HOLE PATTERN	USE "X" DIM. BELOW TO POSITION MOUNTING PLATE HOLE "X"	
1001	"G"	25-3/8" [645mm]	
1025	"D"	28-1/8" [714mm]	
1047	"E"	24-3/8" [619mm]	
1105	"H"	34-5/16" [872mm]	
1107	"F"	26-3/16" [665mm]	
1109	"H"	27-5/16" [694mm]	
1109.14	"H"	27-5/16" [694mm]	
1109FR	"H"	27-5/16" [694mm]	
1311	"E"	26-3/4" [679mm]	
WASTE DRIP TRAY (ONLY) AT 27" ADULT HEIGHT			
6468	"G"	25-3/8" [645mm]	
1922	"G"	25-3/8" [645mm]	

TOP VIEW

6700 MOUNTING PLATE

FOR USE WITH

DRINKING FOUNTAINS

AND WASTE DRIP TRAYS

AT 27" ADULT HEIGHT

(SEE SHEETS 2 - 5 FOR USE WITH


BOTTLE FILLER 1920/1920HO SERIES

AND CHILD HEIGHT APPLICATIONS)

* FINISH WALL OVER MOUNTING PLATE AND BEHIND BACK PANEL. MAKE SURE THAT FINISHED WALL EXTENDS WITHIN THE BRACKET/BOWL MOUNTING HOLES (TO PROVIDE SURFACE AREA FOR RUBBER SPACERS TO CONTACT).

CAUTION

REGARDING CONCRETE/MASONRY WALL MOUNTING: DO NOT SECURE MOUNTING PLATE TO SAME SIDE OF WALL AS FOUNTAIN. AVOID COMPROMISING INTEGRITY OF WALL WHEN ANCHORING FOUNTAIN. IT IS RECOMMENDED THAT INSTALLER CALL TECHNICAL SUPPORT IF THERE ARE ANY QUESTIONS AS TO HOW TO OBTAIN A PROPER ANCHOR IN CONCRETE/MASONRY WALLS. 1-800-766-5612



Haws®
Since 1906

ECN NO. REVISED PERBY: 6700

DRAWN: 6700

CAL: 6700

APPROVED: 6700

DATE: 02/11/25

SCALE: N/A

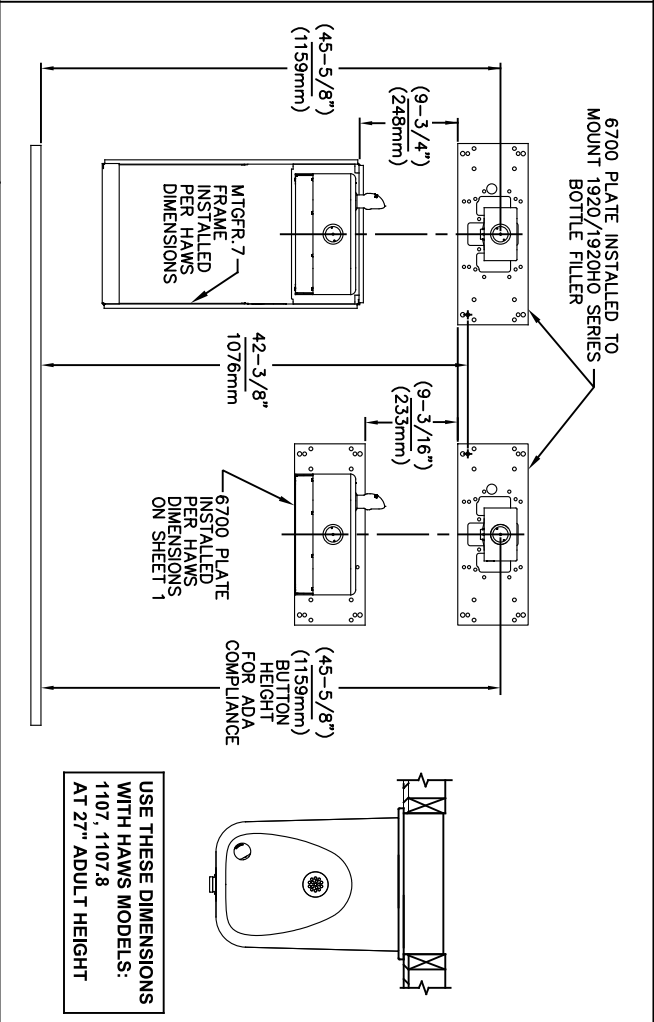
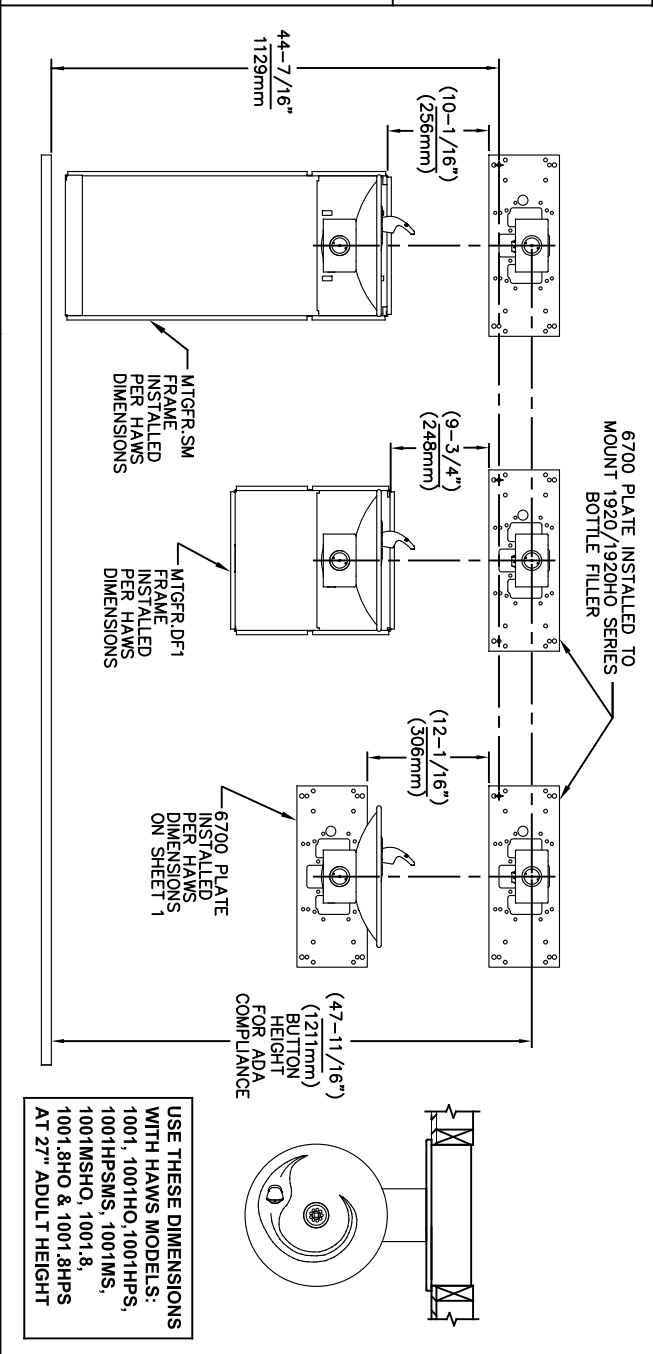
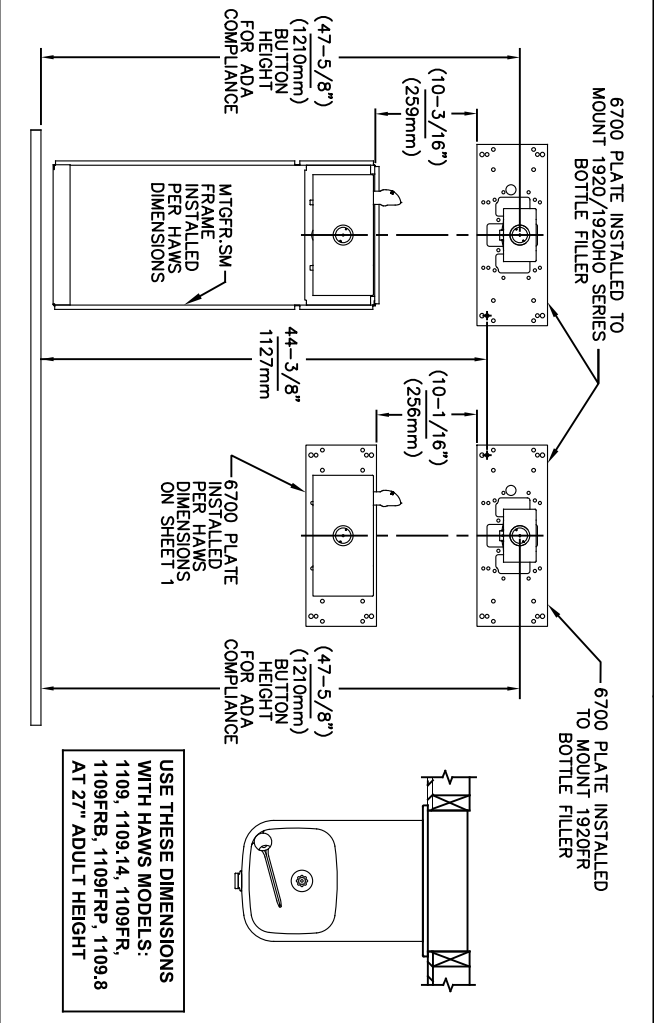
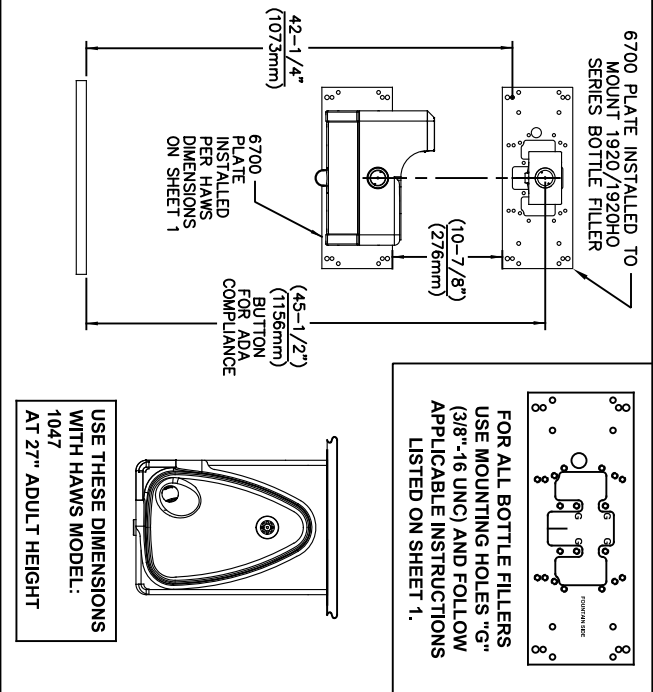
DRAWING TYPE: INSTALLATION

SIZE: A

SHEET: 2 OF 6

1455 KLEPPE LANE
SPARKS, NEVADA 89431
(775) 359-4712 FAX (775) 359-7424
E-MAIL: HAWS@HAWS.CO.COM
WEBSITE: WWW.HAWS.CO.COM

PART NUMBER
0002080016



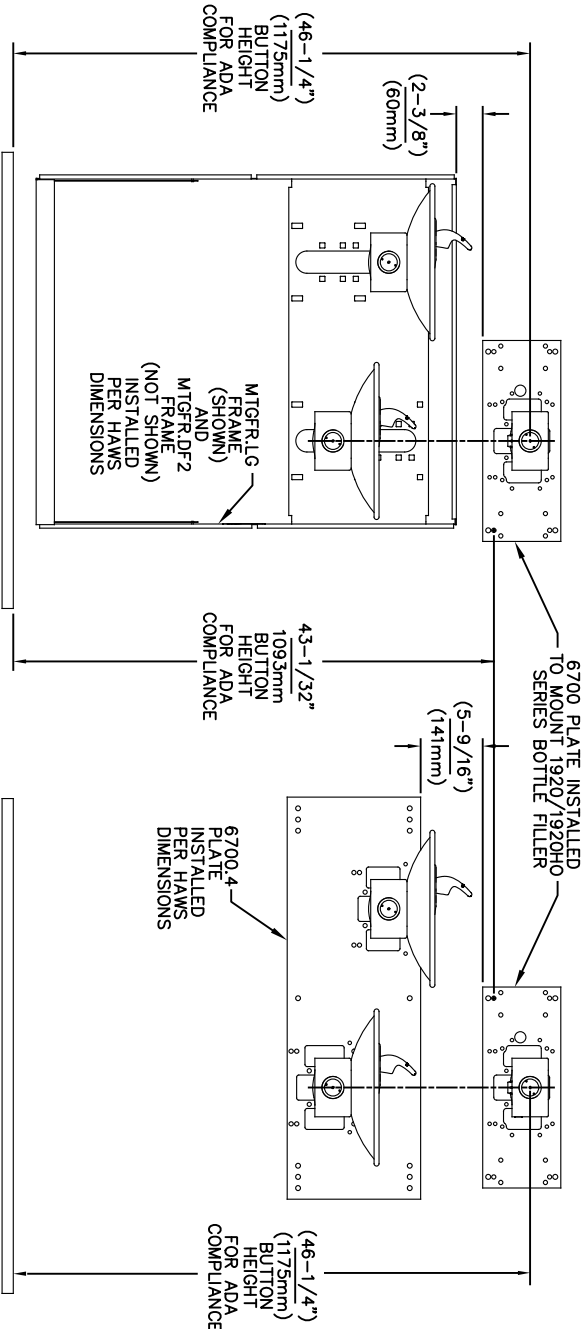
NOTES:

1. WHEN INSTALLING THIS UNIT, LOCAL, STATE OR FEDERAL CODES SHOULD BE ADHERED TO.
2. BACK PANELS (OPTIONAL) NOT SHOWN FOR CLARITY.

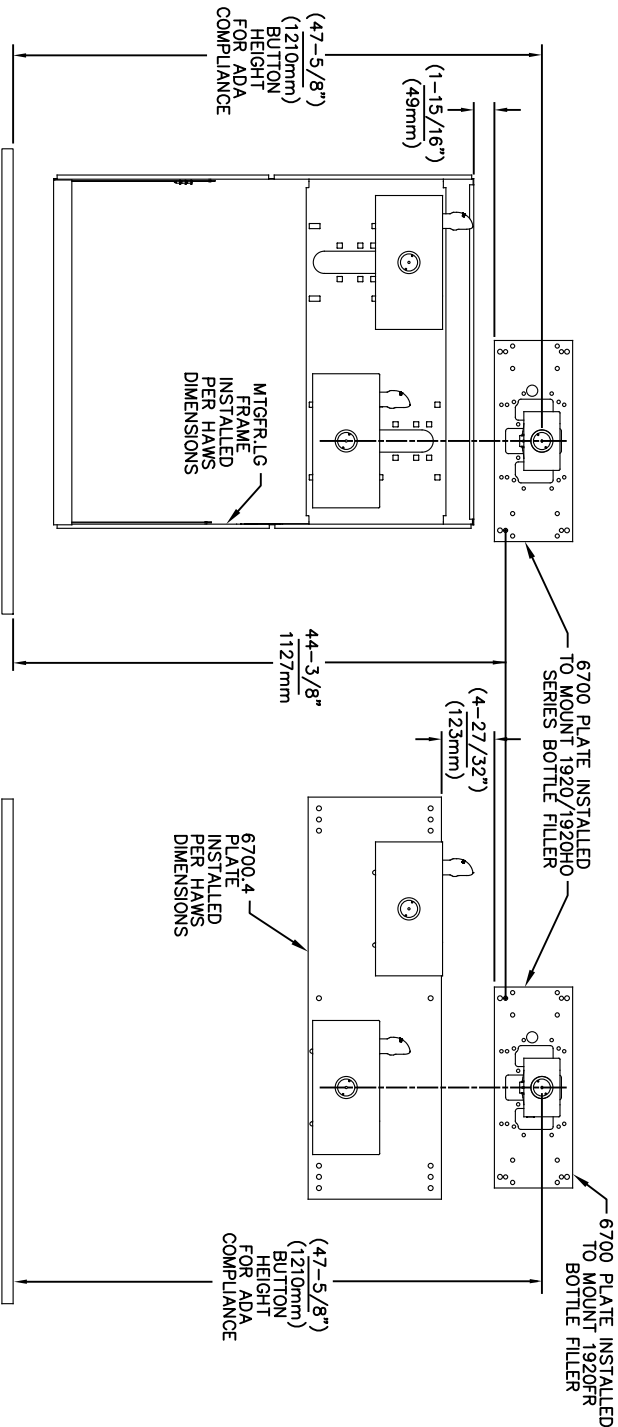
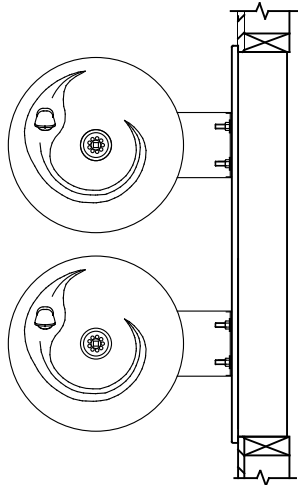
6700 MOUNTING PLATE FOR USE WITH BOTTLE FILLER (SEE SHEET 1 FOR USE WITH DRINKING FOUNTAINS)



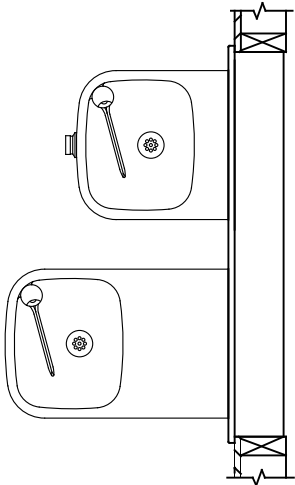
ECN NO. REVISED PER BY:		MODEL(S)	
DRAWN:	ECN 6148	DATE:	CHK'D:
MJ	02/09/17	JG	
APPROVED:	DATE:	SCALE:	DRAWING TYPE:
FV	02/11/25	N/A	
INSTALLATION		SIZE:	A
		SHEET:	3 OF 6
		REVISION:	26



USE THESE MOUNTING DIMENSIONS IF
INSTALLING OVER HAWS FOUNTAIN
MODEL: 1011, 1011HO, 1011HO2,
1011HPS, 1011HPSHO, 1011HPSHO2,
1011HPSMS, 1011HMS, 1011MSHO,
1011MSHO2, 1011.8, 1011.8HO,
1011.8HO2 & 1011.8HPSM
AT 27" ADULT HEIGHT
INSTALL THE 6700 ABOVE THE
FOUNTAIN MOUNTING PLATE OR
FRAME AT THE DIMENSION SHOWN
FOR CORRECT BACKPANEL SPACING
BACK PANELS FOR BOTTLE FILLERS
(NOT SUPPLIED - OPTIONAL) ARE NOT
SHOWN FOR CLARITY.




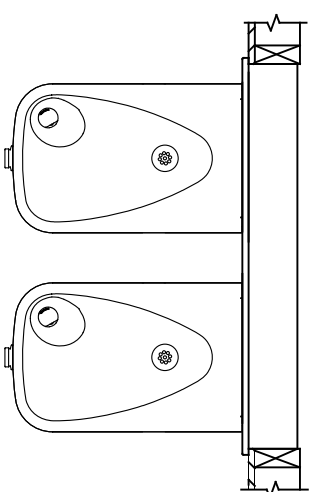
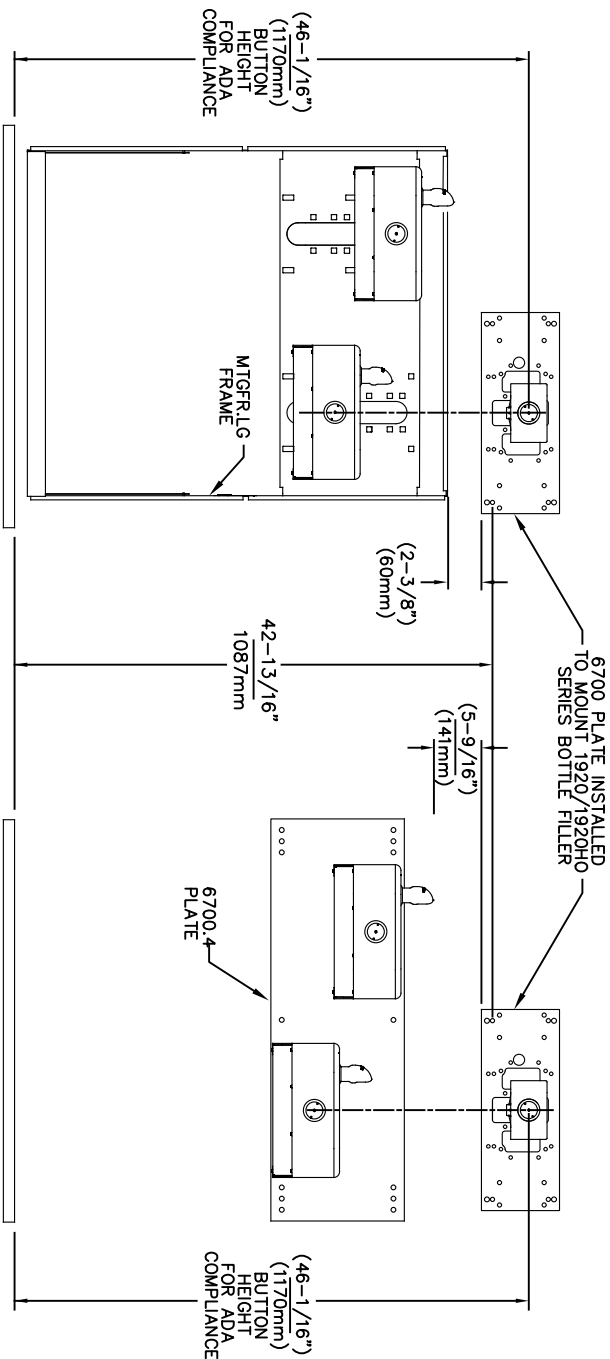
USE THESE MOUNTING DIMENSIONS IF
INSTALLING OVER HAWS FOUNTAIN
MODEL: 1119, 1119.14, 1119.14HO,
1119.14HO2, 1119FR, 1119FRB,
1119FRP, 1119HO, 1119HO2 & 1119.8
AT 27" ADULT HEIGHT
INSTALL THE 6700 ABOVE THE
FOUNTAIN MOUNTING PLATE OR
FRAME AT THE DIMENSION SHOWN
FOR CORRECT BACKPANEL SPACING
BACK PANELS FOR BOTTLE FILLERS
(NOT SUPPLIED - OPTIONAL) ARE NOT
SHOWN FOR CLARITY.



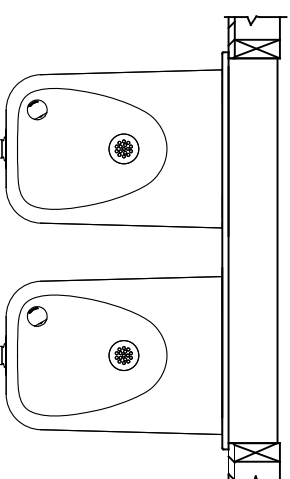
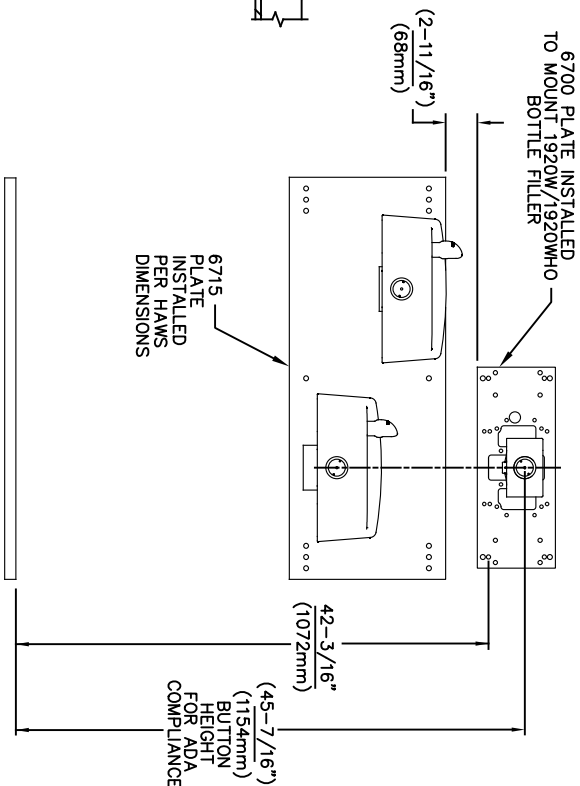
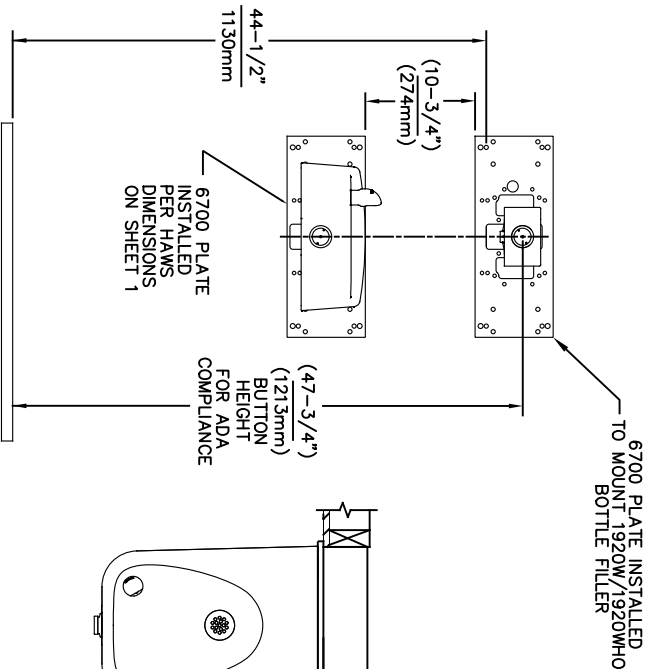
- NOTES:
1. WHEN INSTALLING THIS UNIT, LOCAL, STATE OR FEDERAL CODES SHOULD BE ADHERED TO.
 2. BACK PANELS (OPTIONAL) NOT SHOWN FOR CLARITY.

6700 MOUNTING PLATE
FOR USE WITH BOTTLE FILLER
(SEE SHEET 1 FOR USE WITH
DRINKING FOUNTAINS)

		1456 KLEPPE LANE SPARKS, NEVADA 89431 (775) 359-4712 FAX (775) 359-7424 E-MAIL: HAWS@HAWS.CO.COM WEBSITE: WWW.HAWS.CO.COM	
ECN NO. REVISED PERBY:	MODEL(S)	6700	
5550 ECN 6148 J.G.	DATE: 09/14/20 J.G.	PART NUMBER 0002080016	
DRAWN: FV	DATE: 02/11/25	REVISION: 26	
APPROVED: FV	SCALE: 1:13	DRAWING TYPE: INSTALLATION	
SIZE: A		SHEET 4 OF 6	




USE THESE MOUNTING DIMENSIONS IF
INSTALLING OVER HAWS FOUNTAIN
MODEL: 1117, 1117.8
AT 27" ADULT HEIGHT
INSTALL THE 6700 ABOVE THE
FOUNTAIN MOUNTING PLATE OR
FRAME AT THE DIMENSION SHOWN
FOR CORRECT BACKPANEL SPACING
BACK PANELS FOR BOTTLE FILLERS
(NOT SUPPLIED - OPTIONAL) ARE NOT
SHOWN FOR CLARITY.

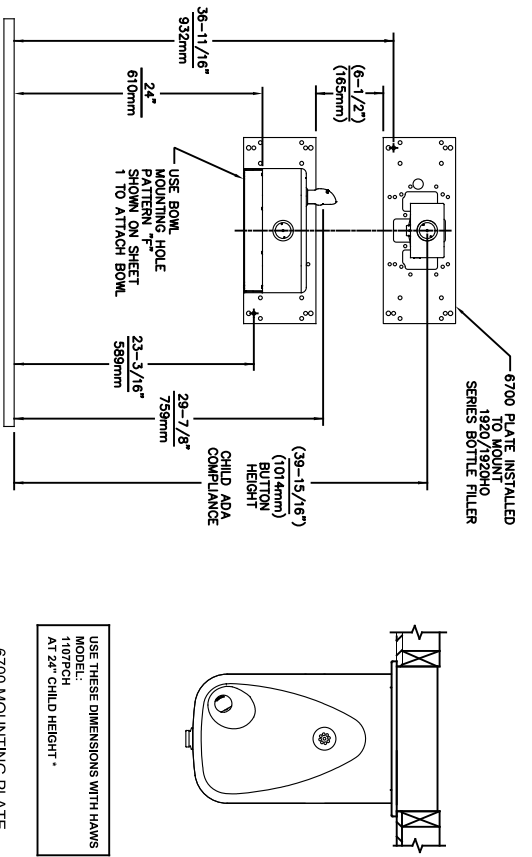


USE THESE MOUNTING DIMENSIONS IF
INSTALLING OVER HAWS FOUNTAIN
MODEL: 1311, 1501
AT 27" ADULT HEIGHT
INSTALL THE 6700 ABOVE THE
FOUNTAIN MOUNTING PLATE AT
THE DIMENSION SHOWN FOR CORRECT
BACKPANEL SPACING (IF APPLICABLE).
BACK PANEL FOR BOTTLE FILLER
(NOT SUPPLIED - OPTIONAL) IS NOT
SHOWN FOR CLARITY.

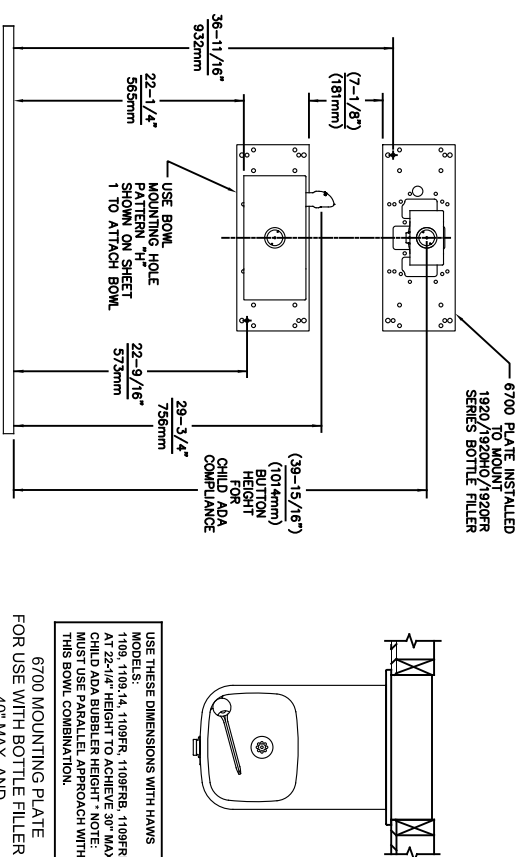
- NOTES:
1. WHEN INSTALLING THIS UNIT, LOCAL, STATE OR FEDERAL CODES SHOULD BE ADHERED TO.
 2. BACK PANELS (OPTIONAL) NOT SHOWN FOR CLARITY.

6700 MOUNTING PLATE
FOR USE WITH BOTTLE FILLER
(SEE SHEET 1 FOR USE WITH
DRINKING FOUNTAINS)

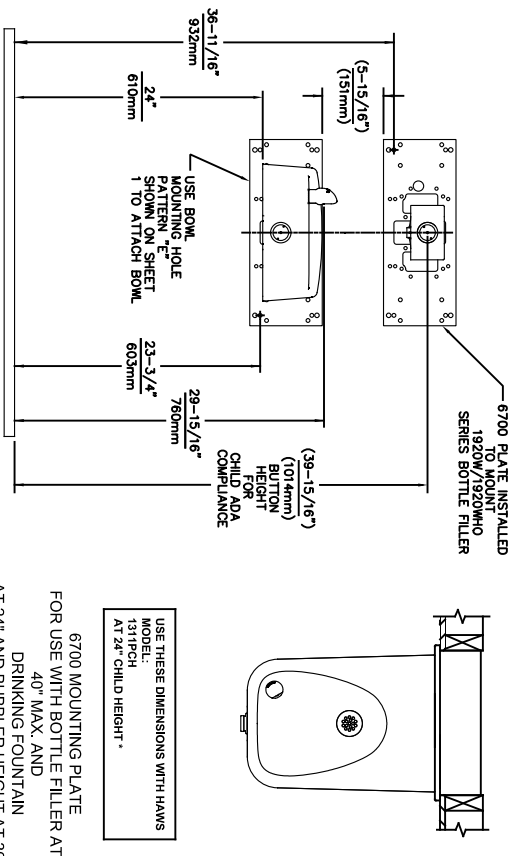
		1456 KLEPPE LANE SPARKS, NEVADA 89431 (775) 359-4712 FAX (775) 359-7424 E-MAIL: HAWS@HAWS.CO.COM WEBSITE: WWW.HAWS.CO.COM	
ECN NO. REVISED PERBY:	MODEL(S)	6700	
DRAWN: 5550	DATE: 06/14/20	CHKD: JG	PART NUMBER 0002080016
APPROVED: FV	DATE: 02/11/25	SCALE: 1:13	DRAWING TYPE: INSTALLATION
		SHEET 5	OF 6



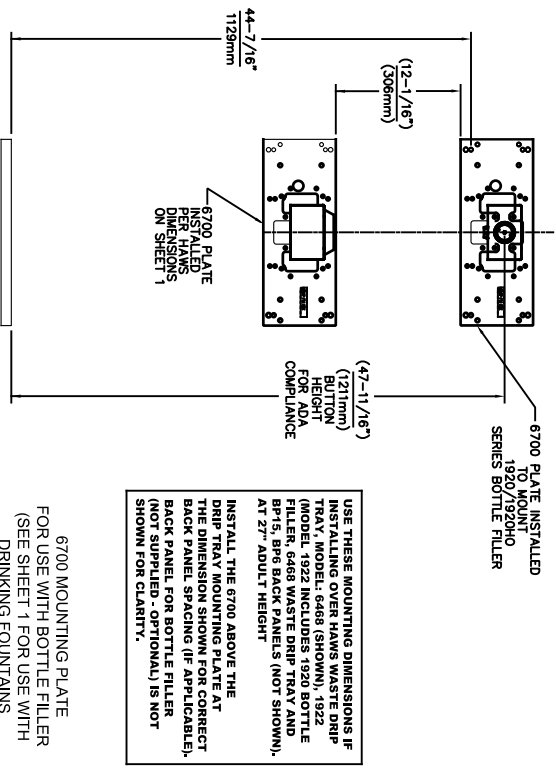
6700 MOUNTING PLATE
FOR USE WITH BOTTLE FILLER AT
40\" MAX. AND
DRINKING FOUNTAIN
AT 24\" AND BUBBLER HEIGHT AT 30\"
MAX. FOR CHILD ADA HEIGHT
(SEE SHEETS 1 & 2 FOR USE WITH
DRINKING FOUNTAIN AT 27\" ADULT
HEIGHT DIMENSIONS)




6700 MOUNTING PLATE
FOR USE WITH BOTTLE FILLER AT
40\" MAX. AND
DRINKING FOUNTAIN
BUBBLER HEIGHT AT 30\" MAX.
FOR CHILD ADA HEIGHT
MUST USE PARALLEL APPROACH
WITH THIS BOWL COMBINATION
(SEE SHEETS 1 & 2 FOR USE WITH
DRINKING FOUNTAIN AT 27\" ADULT
HEIGHT DIMENSIONS)



6700 MOUNTING PLATE
FOR USE WITH BOTTLE FILLER AT
40\" MAX. AND
DRINKING FOUNTAIN
AT 24\" AND BUBBLER HEIGHT AT 30\"
MAX. FOR CHILD ADA HEIGHT
(SEE SHEETS 1 & 4 FOR USE WITH
DRINKING FOUNTAIN AT 27\" ADULT
HEIGHT DIMENSIONS)



6700 MOUNTING PLATE
FOR USE WITH BOTTLE FILLER
(SEE SHEET 1 FOR USE WITH
DRINKING FOUNTAINS
AND WASTE DRIP TRAY)



1456 KLEPPE LANE
SPARKS, NEVADA 89431
(775) 359-4712 FAX (775) 359-7424
E-MAIL: HAWS@HAWS.CO.COM
WEBSITE: WWW.HAWS.CO.COM

ECN NO. REVISED PERBY:	MODEL(S)
5893 1 ECN 6148 1 JG	6700
DRAWN: FV	PART NUMBER
07/26/23 JG	0002080016
APPROVED: FV	REVISION
02/11/25	26
SCALE: 1:13	SHEET 6 OF 6
DRAWING TYPE:	INSTALLATION
SHEET A	