

FEATURES & BENEFITS

CONSTRUCTION

Heavy duty ADA accessible 18 gauge Type 304 stainless steel with a satin finish that resists stains and corrosion, and has soft, rounded corners. Unit features stainless steel satin finish back panel, vandal-resistant bottom plate, and 1-1/4" integrated trap.

BOTTLE FILLER

14-gauge Type 304 stainless steel bottle filler housing with touchless operation and 1 gpm (3.78 L) laminar flow with 30-second obstruction time-out.

BUBBLER HEAD

Polished chrome-plated brass bubbler head with integral 11/16" dia. basin shank and stainless anti-rotation roll pin for vandal resistance strength. Shielded, angled stream opening provides a steady, sanitary source of drinking water at .45 gpm.

FOUNTAIN VALVES

Fountain incorporates touchless sensor operated stainless steel solenoid valves controlled by a transformer for hands-free operation. A pressure regulator is used to adjust the bubbler flow according to incoming water pressures.

VANDAL RESISTANT

The bubbler head, sensor, drain strainer and bottom plate are locked in place, discouraging unwanted vandal tampering, and 30-second obstruction time-out to reduce tampering of sensor.

INTEGRATED TRAP

Allcast-brass 1-1/4" NPT adjustable trap completely concealed inside bottom plate for easy installation and access.

OPTIONS

- Mounting Plate: Model 6700, in-wall mounting plate for model 1920HO and/or the 1109HO.
- Mounting Plate: Model 6700R, on-wall mounting plate for model 1920HO.
- Support Frame: Model 6800 In-wall floor mounted fixture support legs, welded steel 4-bolt floor flanges, and supplied with 'U' bolts and hardware.
- Water Filter: Model 6426, 10" x 2" (25.4 x 5.1 cm), in-line lead removal element that reduces lead from incoming water supply.

For more information, visit www.hawscow.com or call (888) 640-4297.



REQUIRED MODELS

1109HO / 6469 / BP3 / 1920HO / BP15

Order these items to make up the Model 1109HO-1920HO fountain with stainless steel back panel and bottle filler with stainless steel back plate.

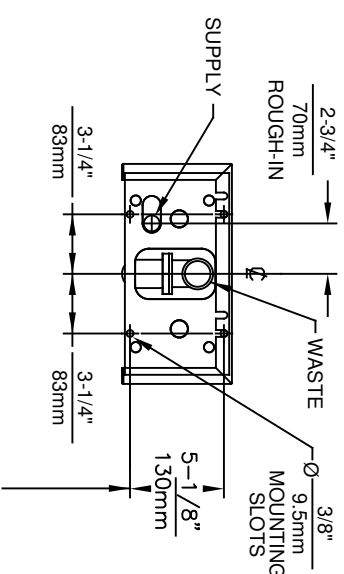
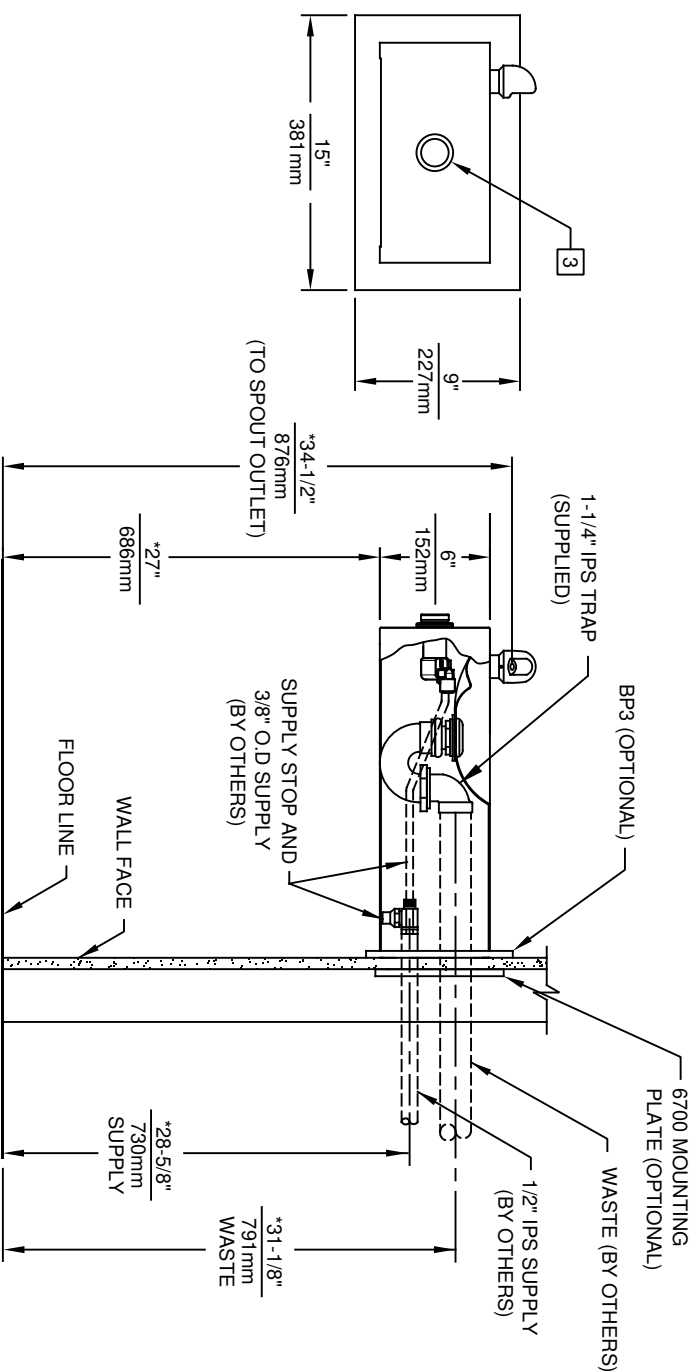
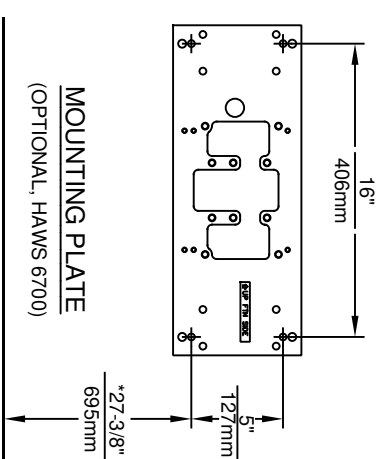
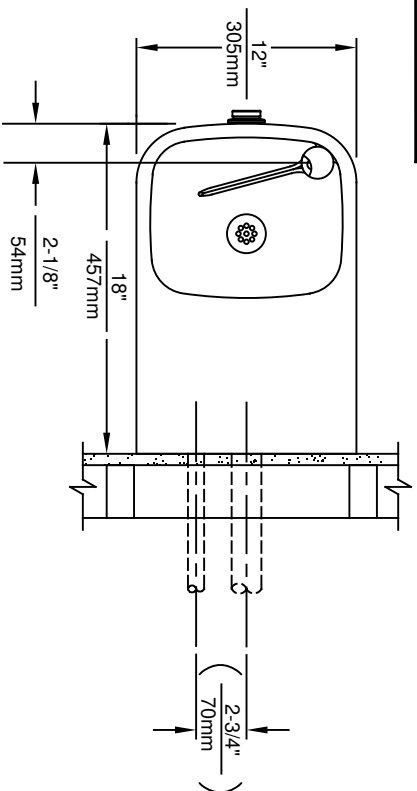
FOR INDOOR USE ONLY

SPECIFICATIONS

Model 1109HO-1920HO ADA vandal-resistant wall mounted motion-activated drinking fountain and bottle filler shall include an 18 gauge Type 304 Stainless Steel satin finish basin, 14 gauge Type 304 Stainless Steel bottle filler bracket, touchless sensor operated stainless steel solenoid valves with 30-second obstruction time-out controlled by a transformer, 100% lead-free waterways, 1 gpm (3.78 L) laminar flow bottle filler, polished chrome-plated brass vandal-resistant bubbler head, polished chrome-plated brass vandal-resistant waste strainer, vandal-resistant bottom plate, stainless steel satin finish back panels, and 1-1/4" NPT trap. Manufactured to be lead-free by all known definitions including NSF/ANSI/CAN 61-Section 9, NSF/ANSI/CAN 372, California Proposition 65, and the Federal Safe Drinking Water Act. Product is compliant to California Health and Safety Code 116875 (AB 1953-2006), and 116876 (AB 100) "NSF/ANSI/CAN 61: Q ≤ 1".

The bottle filler requires a mounting plate; either the Haws model 6700 in-wall or the 6700R on-wall support plate.





MOUNTING DETAIL

BACK VIEW

NOTES:

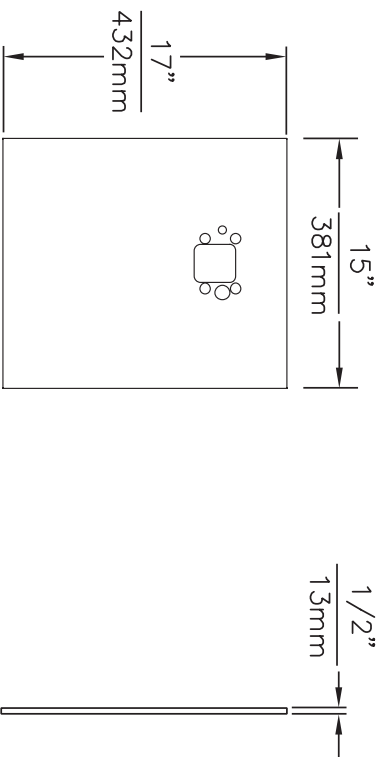
1. HOLD ROUGH-IN DIMENSIONS $\pm 1/4$ " (6.4mm).
2. WHEN INSTALLING THIS UNIT, LOCAL, STATE OR FEDERAL CODES SHOULD BE ADHERED TO. FOR INSTALLATION HEIGHTS OTHER THAN SHOWN, DIMENSIONS MARKED (*) MUST BE ADJUSTED ACCORDINGLY.
3. REFER TO 5874 SERIES/VRK5874 OPERATION AND MAINTENANCE MANUAL FOR PUSH BUTTON AND VALVE INSTALLATION/MAINTENANCE INSTRUCTIONS.



Haws

1456 KLEPPE LANE
SPARKS, NEVADA 89431
(775) 359-4712 FAX (775) 359-7424
E-MAIL: HAWS@HAWS.CO.COM
WEBSITE: WWW.HAWS.CO.COM

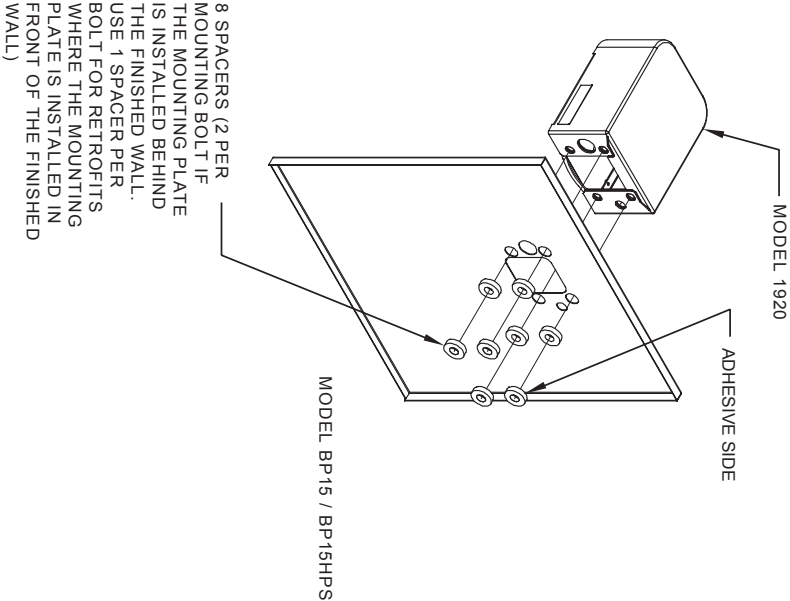
ECN NO. REVISED PER BY:	MODEL(S)	1109.14
DRAWN: ECN: S215 JP		
DATE: 06/98	CHKD: GC	
APPROVED: FV	DATE: 11/22/17	
SCALE: NA	DRAWING TYPE: INSTALLATION	SIZE: A
		SHEET 1 OF 1
		REVISION: 16
		PART NUMBER: 0002076625.D




MODEL BP15 / BP15HPS

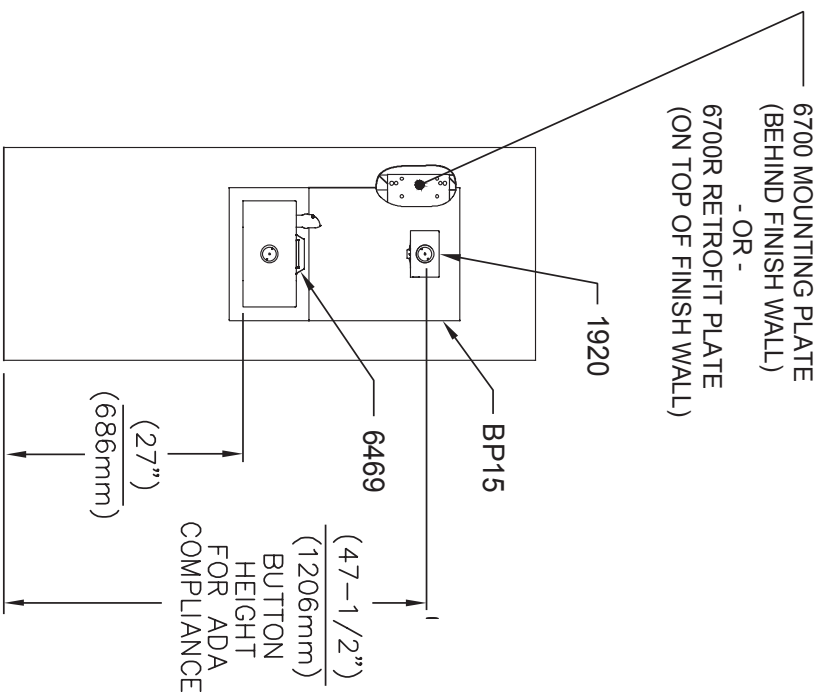
- NOTES:
1. WHEN INSTALLING THIS UNIT, LOCAL, STATE OR FEDERAL CODES SHOULD BE ADHERED TO.

©2017 Haws Corporation - All Rights Reserved. HAWS® and other trademarks used in these materials are the exclusive property of Haws Corporation.

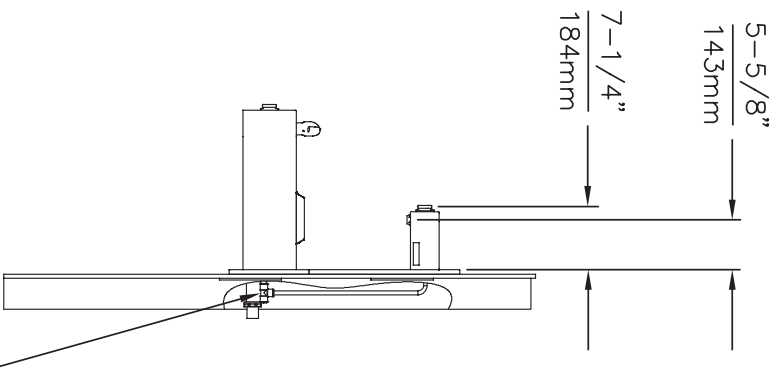


INSTALLATION OVER SINGLE FOUNTAIN
SHOWN FROM REAR

		Haws ®		1455 KLEPPE LANE SPARKS, NEVADA 89431 (775) 359-4712 FAX (775) 359-7424 E-MAIL: HAWS@HAWSCO.COM WEBSITE: WWW.HAWSCO.COM							
ECN/NO. REVISED PER:		GC.				MODEL(S)					
DRAWN: GC		DATE: 09/31/17				CHK'D:					
APPROVED:		DATE:		SCALE: 1:1		DRAWING TYPE: INSTALLATION		SHEET: A		SHEET 2 OF 2	

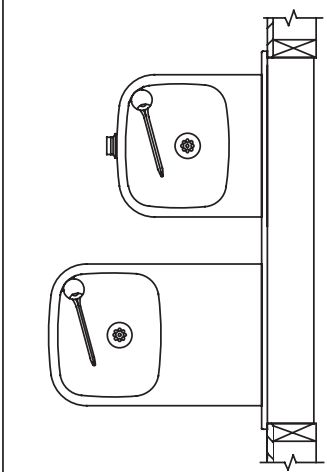


INSTALLATION ABOVE HAWS 1109, 1109.14



* IF YOUR FOUNTAIN IS THIS STYLE USE
THESE DIMENSIONS

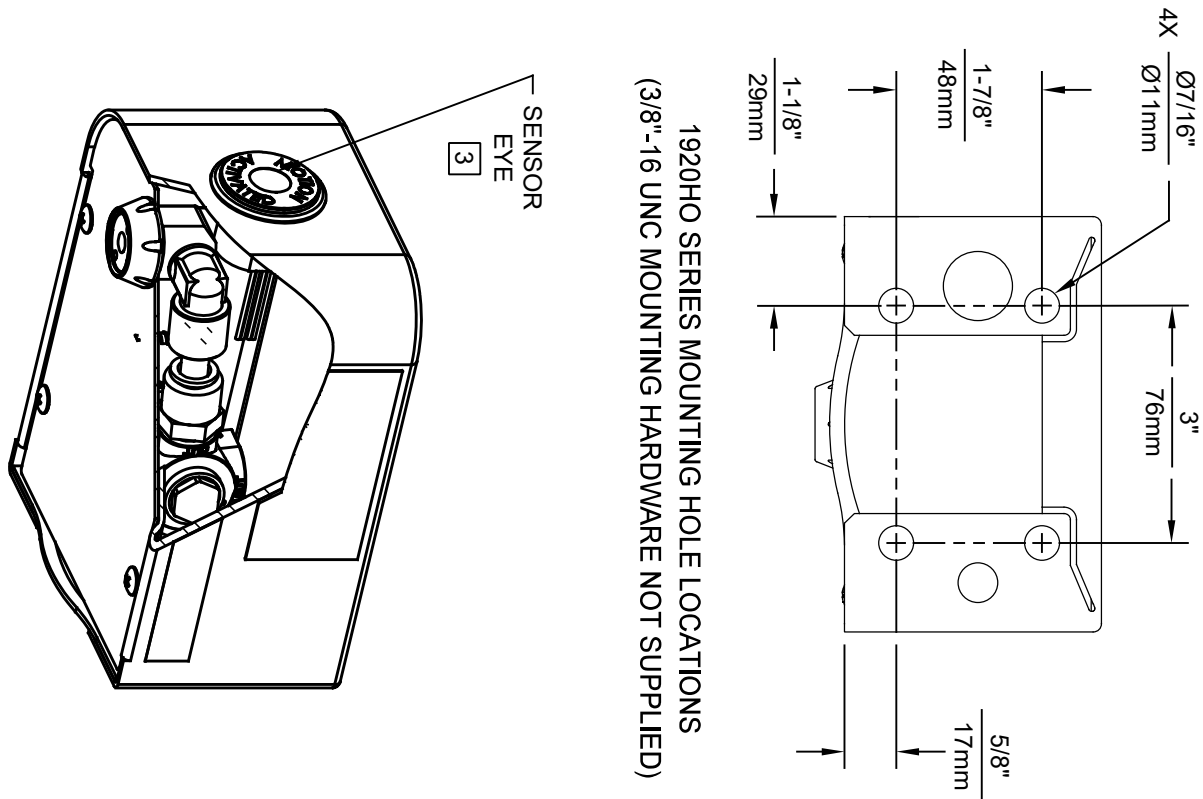
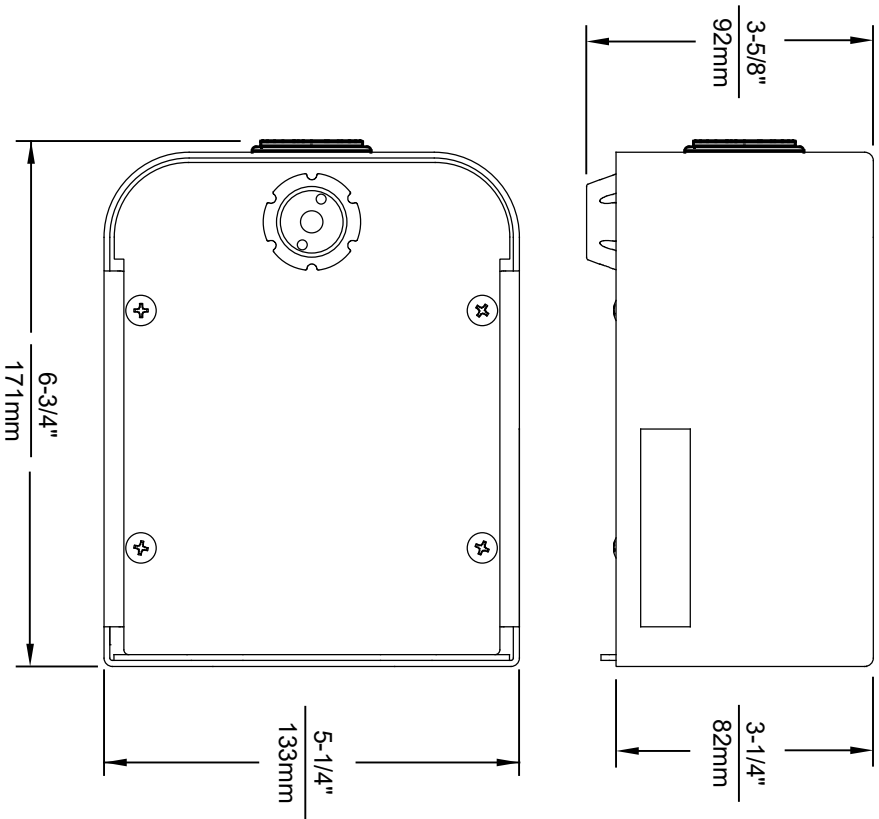
1. SEE SEPARATE INSTALLATION DRAWINGS
FOR MOUNTING PLATES, BACKPANELS
& DRIP TRAY
2. WHEN INSTALLING THIS UNIT, LOCAL,
STATE OR FEDERAL CODES SHOULD
BE ADHERED TO FOR INSTALLATION
LOCATIONS, WASTE & SUPPLY
REQUIREMENTS OTHER THAN SHOWN.



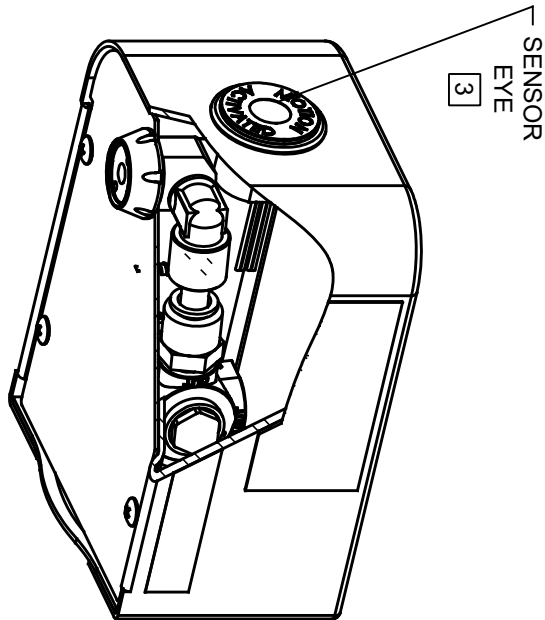
Haws®

1455 KLEPPE LANE
SPARKS, NEVADA 89431
(775) 359-4712 FAX (775) 359-7424
E-MAIL: HAWS@HAWSCO.COM
WEBSITE: WWW.HAWSCO.COM

ECNNO		REVISED PERBY		MODEL(S)		PART NUMBER	
ECN	DATE	GC	CHD	MODEL 1109 AND 1109.14 WITH		1109.20	
GC	09/31/12			MODEL 1920 BOTTLE FILLER			
APPROVED	DATE	SCALE	NA	DRAWING TYPE	INSTALLATION	SIZE	A
						SHEET	1 OF 2



1920HO SERIES MOUNTING HOLE LOCATIONS
(3/8"-16 UNC MOUNTING HARDWARE NOT SUPPLIED)

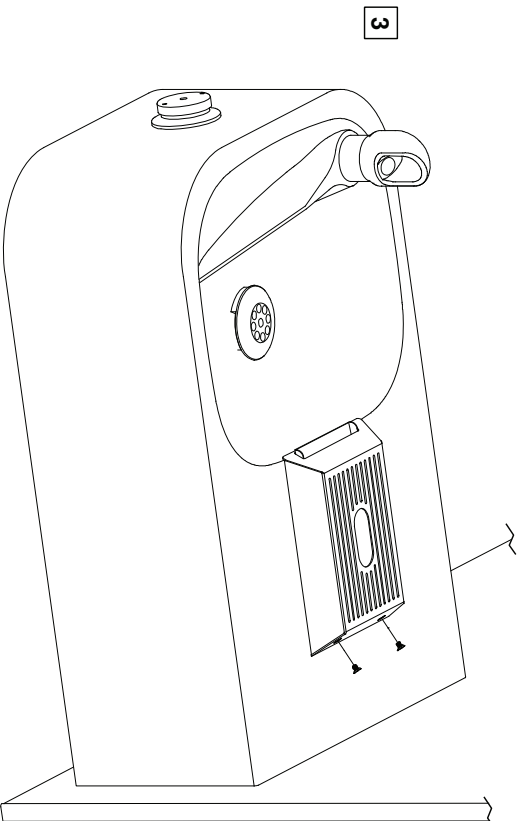


NOTES:

1. SEE SEPARATE INSTALLATION DRAWINGS FOR MOUNTING PLATES AND BACKPANELS
2. WHEN INSTALLING THIS UNIT, LOCAL, STATE OR FEDERAL CODES SHOULD BE ADHERED TO FOR INSTALLATION LOCATIONS, WASTE AND SUPPLY REQUIREMENTS OTHER THAN SHOWN.
- 3 REFER TO 1RKHO.H OPERATION & MAINTENANCE INSTRUCTIONS FOR SENSOR SETUP.

				1455 KLEPPE LANE SPARKS, NEVADA 89431 (775) 359-4712 FAX (775) 359-7424 E-MAIL: HAWS@HAWS.CO.COM WEBSITE: WWW.HAWS.CO.COM	
EQUIPMENT PERMITTED BY:		MODEL(S)		PART NUMBER	
DRAWING		1920HO/1920HPSHO/1920WHD		0510001063.D	
APPROVED:		SCALE: N/A		SHEET 1 OF 6	
DATE: 05/19/21		INSTALLATION		REVISION	
BIM		DATE: 05/19/21		4	

1. THE 6469 BOTTLE FILLER DRIP TRAY ALLOWS THE INSTALLATION OF THE 1920 BOTTLE FILLER OVER HAWS 1109/1119 MODEL DRINKING FOUNTAINS. CENTER THE LOWER DRAIN PAN ALONG THE CENTERLINE OF THE FOUNTAIN.
2. EXTEND THE FRONT EDGE OF THE LOWER DRAIN PAN OVER THE EDGE OF THE FOUNTAIN BOWL BY APPROXIMATELY 1/4" (6mm). IT IS RECOMMENDED TO TEMPORARILY TAPE THE DRAIN PAN IN PLACE, INSTALL THE TOP COVER, AND ACTIVATE THE BOTTLE FILLER TO VERIFY THE WATER STREAM IS ALIGNED TO THE INLET HOLE. VERIFY THE LIP OF THE TOP COVER HANGS OVER THE EDGE OF THE FOUNTAIN BOWL.
3. MARK THE DRAIN PAN HOLE LOCATIONS ON THE FOUNTAIN. THE DRAIN PAN CAN NOW BE PERMANENTLY INSTALLED USING AN APPROPRIATE FASTENING METHOD (FASTENERS NOT SUPPLIED). FASTENING OPTIONS INCLUDE THRU BOLTS, RIVETS, TACK WELDS, AND DOUBLE-SIDED FOAM TAPE. INSTALL THE TOP COVER AND SECURE TO THE DRAIN PAN WITH THE SUPPLIED 4-40 FLATHEAD SCREWS.



		1455 KLEPPE LANE SPARKS, NEVADA 89431 (775) 358-4712 FAX (775) 585-7424 E-MAIL: HAWMS@HAWMSO.COM WEBSITE: WWW.HAWMSO.COM	
E&N NO. PH/ISED REF:BY:		MODEL(S)	
DRAWING	DWG. E&N: 5150	DATE	MM
APPROVED:	DATE	DATE	DD
DATE	01/16/17	SCALE	1:4
DRAWING TYPE:		INSTALLATION	
SIZE	A	SHEET	1 OF 1
REVISION		1	