

## FEATURES & BENEFITS

### CONSTRUCTION

Rugged ADA accessible 14-gauge Type 304 Stainless Steel with a satin finish bowl, 14 gauge Type 304 Stainless Steel bottle filler that resists stains and corrosion, soft rounded corners, stainless steel satin finish back panels, vandal-resistant bottom plate, and 1-1/4" integral trap.

### BOTTLE FILLER

14-gauge Type 304 stainless steel bottle filler housing with touchless operation and 1 gpm (3.78 L) laminar flow with 30-second obstruction time-out.

### BUBBLER HEAD

Polished chrome-plated brass bubbler head with integral 11/16" dia. basin shank and stainless anti-rotation roll pin for vandal resistance strength. Shielded, angled stream opening provides a steady, sanitary source of drinking water at .45 gpm.

### VANDAL RESISTANT

The bubbler head, sensor, drain strainer and bottom plate are locked in place, discouraging unwanted vandal tampering, and 30-second obstruction time-out to reduce tampering of sensor.

### INTEGRATED TRAP

Brass 1-1/4" NPT trap is internally mounted for easy installation and access.



## REQUIRED MODELS

### 1109.14HO / 6469 / BP3 / 1920HO / BP15

Order these items to make up Model 1109.14HO- 1920HO fountain with stainless steel back panel, bottle filler with stainless steel back plate, and drip tray drain.

### FOR INDOOR USE ONLY

## OPTIONS

- Mounting Plate: Model 6700, in-wall mounting plate for model 1920HO and 1109.14HO.
- Mounting Plate: Model 6700R, on-wall mounting plate for model 1920HO.
- Support Frame: Model 6800 In-wall floor mounted fixture support legs, welded steel 4-bolt floor flanges, and supplied with 'U' bolts and hardware.
- Remote Drinking Fountain Water Chiller: Model HCR8, 8 gph (30.3 L) remote water chiller provides instantaneous cooling to meet a continuous demand for chilled water.

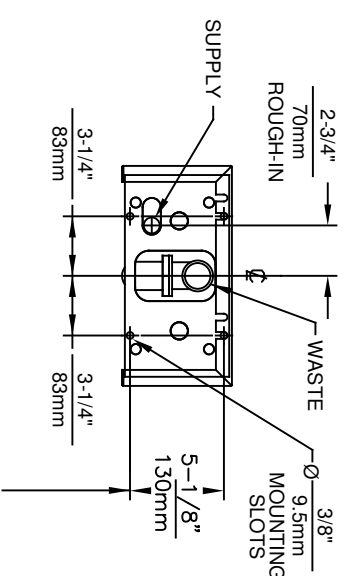
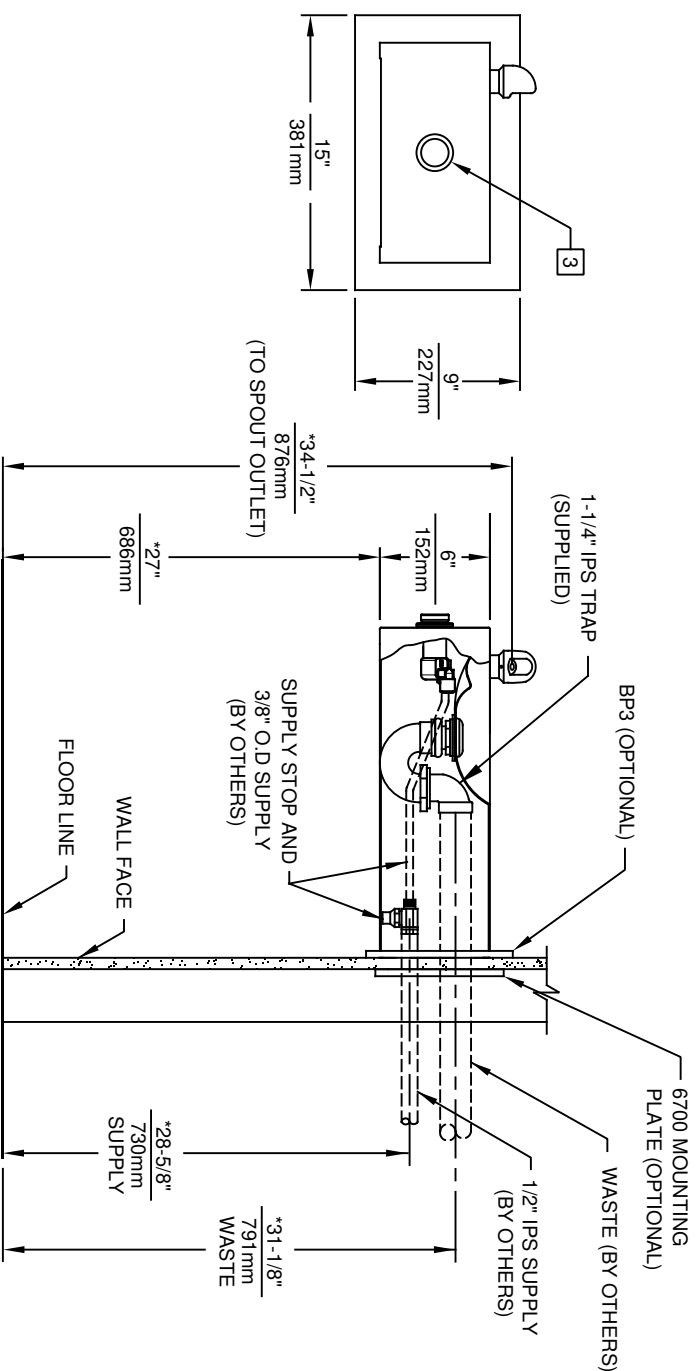
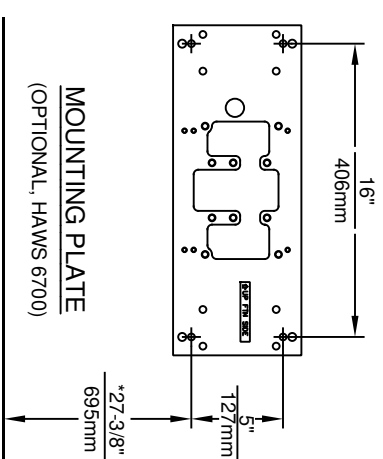
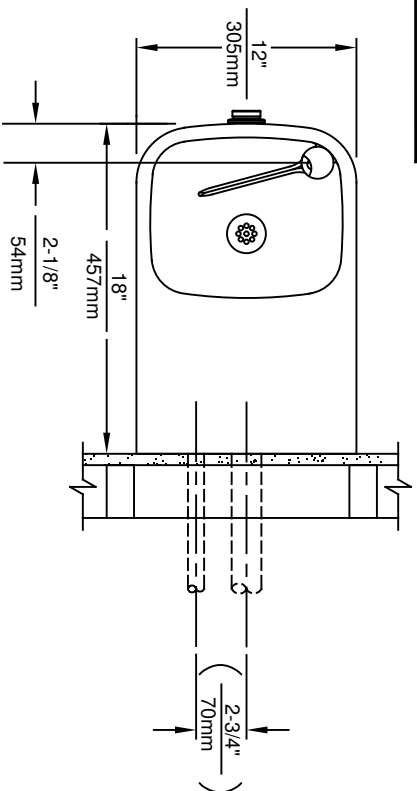
For more information, visit [www.hawsco.com](http://www.hawsco.com) or call (888) 640-4297.

## SPECIFICATIONS

Model 1109.14HO-1920HO ADA vandal-resistant wall-mounted drinking fountain and motion activated bottle filler shall include an 14-gauge Type 304 Stainless Steel satin finish basin, 14 gauge Type 304 Stainless Steel bottle filler bracket, 100% lead-free waterways, touchless sensor operated stainless steel solenoid valves with 30-second obstruction time-out controlled by a transformer, polished chrome-plated brass vandal-resistant bubbler head, 1 gpm (3.78 L) laminar flow bottle filler, integral 1/4" (.6 cm) thick stainless steel mounting plate, polished chrome-plated brass vandal-resistant waste strainer, stainless steel back panels, vandal-resistant bottom plates, and 1-1/4" NPT trap. Manufactured to be lead-free by all known definitions including NSF/ANSI/CAN 61-Section 9, NSF/ANSI/ CAN 372, California Proposition 65, and the Federal Safe Drinking Water Act. Product is compliant to California Health and Safety Code 116875 (AB 1953-2006), and NSF/ANSI/CAN 61: Q ≤ 1.

**The bottle filler requires a mounting plate; either the Haws model 6700 in-wall or the 6700R on-wall support plate.**





## NOTES:

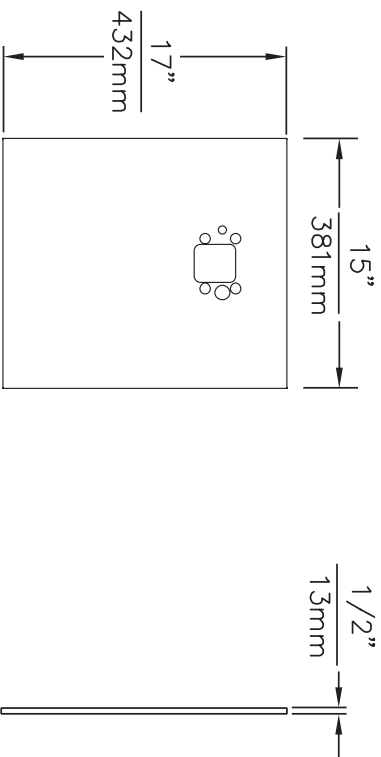
1. HOLD ROUGH-IN DIMENSIONS  $\pm 1/4$ " (6.4mm).
2. WHEN INSTALLING THIS UNIT, LOCAL, STATE OR FEDERAL CODES SHOULD BE ADHERED TO. FOR INSTALLATION HEIGHTS OTHER THAN SHOWN, DIMENSIONS MARKED (\*) MUST BE ADJUSTED ACCORDINGLY.
3. REFER TO 5874 SERIES/VRK5874 OPERATION AND MAINTENANCE MANUAL FOR PUSH BUTTON AND VALVE INSTALLATION/MAINTENANCE INSTRUCTIONS.



**Haws**

1456 KLEPPE LANE  
SPARKS, NEVADA 89431  
(775) 359-4712 FAX (775) 359-7424  
E-MAIL: HAWS@HAWS.CO.COM  
WEBSITE: WWW.HAWS.CO.COM

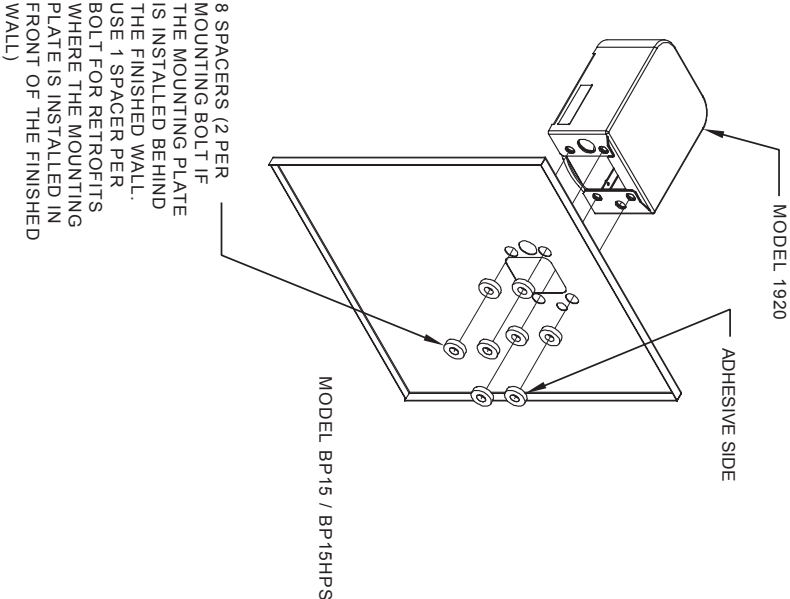
ECN NO. REVISED PER BY:	MODEL(S)	1109.14
DRAWN: ECN: S215 JP	DATE: CHKD: GC	11/09.14
APPROVED: FV	DATE: 11/22/17	SCALE: NA
DRAWING TYPE:	INSTALLATION	SIZE: A
SHEET 1 OF 1	REVISION:	16




**MODEL BP15 / BP15HPS**

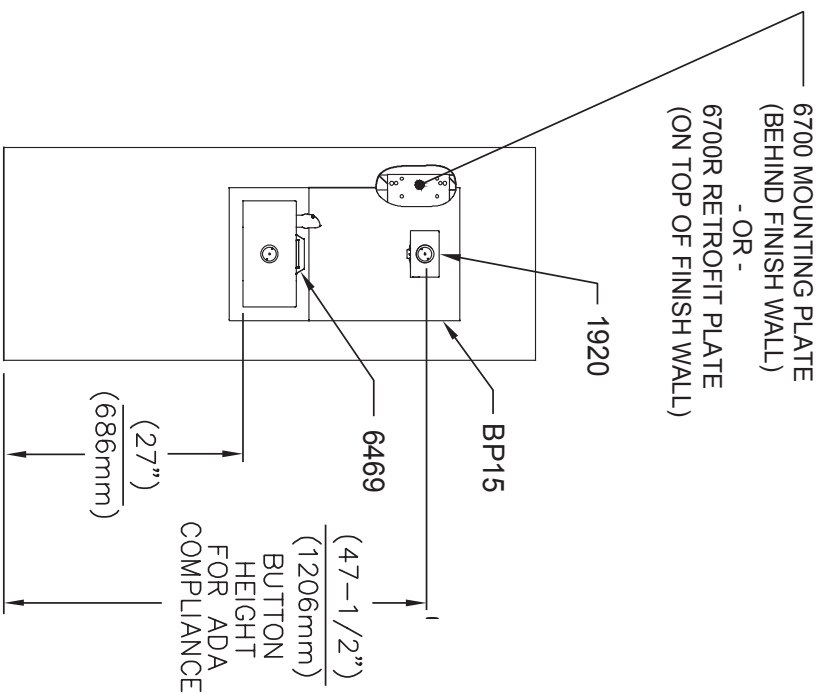
- NOTES:
1. WHEN INSTALLING THIS UNIT, LOCAL, STATE OR FEDERAL CODES SHOULD BE ADHERED TO.

©2017 Haws Corporation - All Rights Reserved. HAWS® and other trademarks used in these materials are the exclusive property of Haws Corporation.

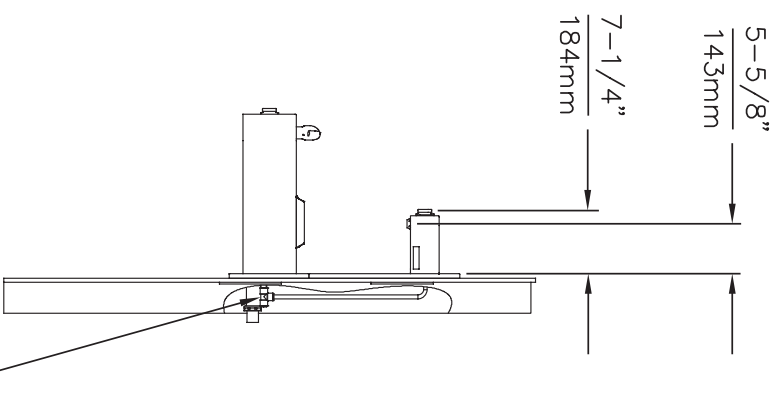


**INSTALLATION OVER SINGLE FOUNTAIN**  
SHOWN FROM REAR

		<b>Haws®</b>		1455 KLEPPE LANE SPARKS, NEVADA 89431 (775) 359-4712 FAX (775) 359-7424 E-MAIL: HAWS@HAWSCO.COM WEBSITE: WWW.HAWSCO.COM							
ECN/NO. REVISED PER:		GC.				MODEL(S)					
DRAWN: GC		DATE: 06/31/17				CHK'D:					
APPROVED:		DATE:		SCALE: 1:1		DRAWING TYPE: INSTALLATION		SHEET: A		SHEET 2 OF 2	
						MODEL 1109 AND 1109.14 WITH MODEL 1920 BOTTLE FILLER				REVISION: 1109-20	
										PART NUMBER: 0A.1	

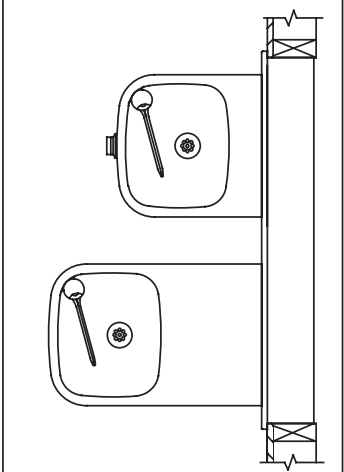


**INSTALLATION ABOVE HAWS 1109, 1109.14**



\* IF YOUR FOUNTAIN IS THIS STYLE USE  
THESE DIMENSIONS

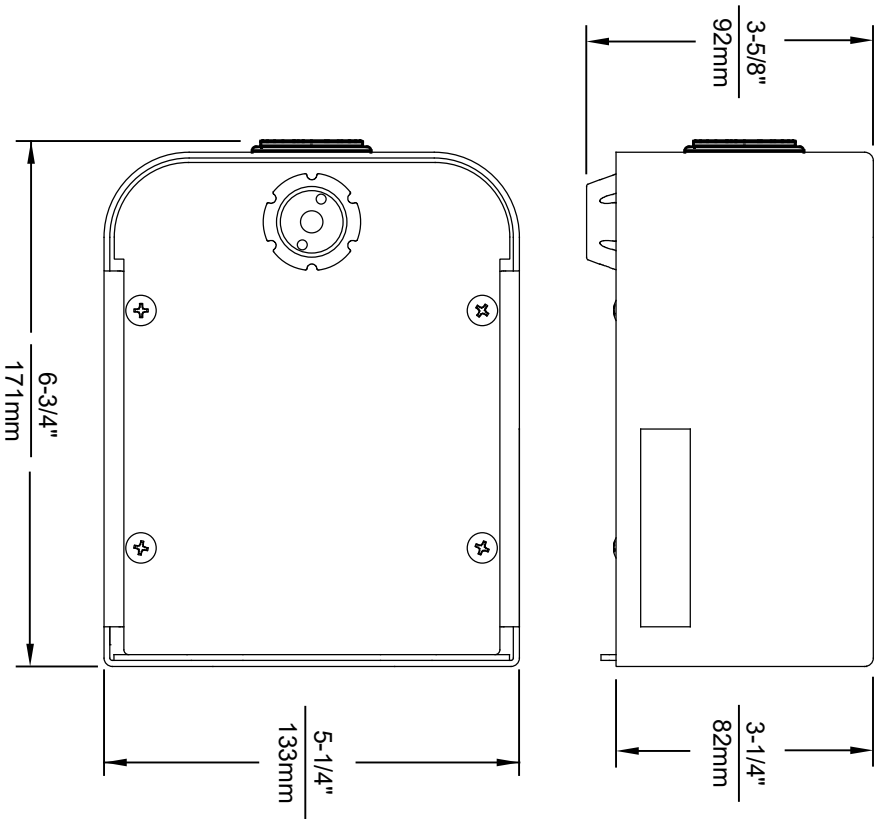
1. SEE SEPARATE INSTALLATION DRAWINGS  
FOR MOUNTING PLATES, BACKPANELS  
& DRIP TRAY
2. WHEN INSTALLING THIS UNIT, LOCAL,  
STATE OR FEDERAL CODES SHOULD  
BE ADHERED TO FOR INSTALLATION  
LOCATIONS, WASTE & SUPPLY  
REQUIREMENTS OTHER THAN SHOWN.



**Haws**

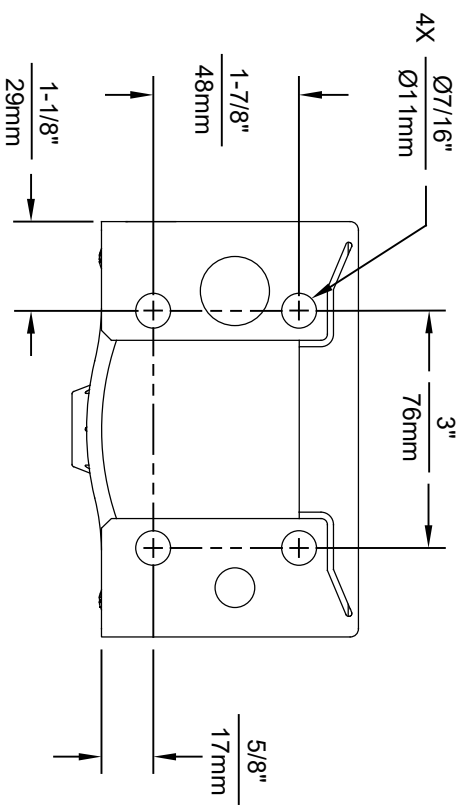
1455 KLEPPE LANE  
SPARKS, NEVADA 89431  
(775) 359-4712 FAX (775) 359-7424  
E-MAIL: HAWS@HAWS.CO.COM  
WEBSITE: WWW.HAWS.CO.COM

ECNNO		REVISED PERBY		MODEL(S)		PART NUMBER	
DRAWN	GC	DATE	CHKD	MODEL 1109 AND 1109.14 WITH		1109.20	
GC	GC	09/31/12		MODEL 1920 BOTTLE FILLER		0A.1	
APPROVED		DATE		INSTALLATION		SIZE: A	
SCALE		NA	DRAWING TYPE		SHEET 1 OF 2		

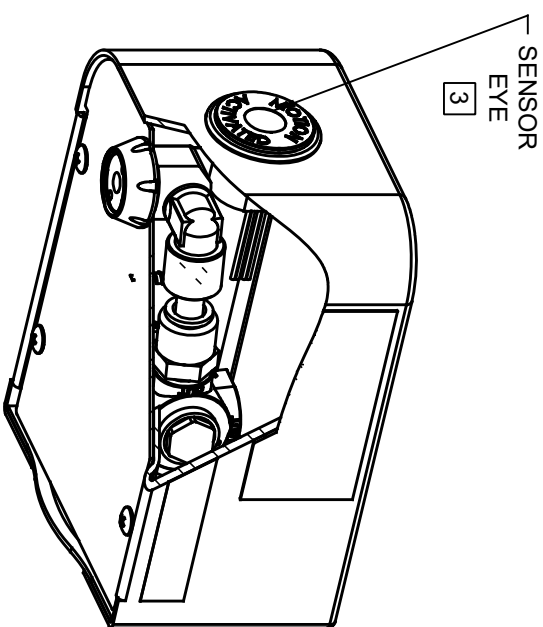




NOTES:

1. SEE SEPARATE INSTALLATION DRAWINGS FOR MOUNTING PLATES AND BACKPANELS
2. WHEN INSTALLING THIS UNIT, LOCAL, STATE OR FEDERAL CODES SHOULD BE ADHERED TO FOR INSTALLATION LOCATIONS, WASTE AND SUPPLY REQUIREMENTS OTHER THAN SHOWN.
- 3 REFER TO 1RKHO.H OPERATION & MAINTENANCE INSTRUCTIONS FOR SENSOR SETUP.



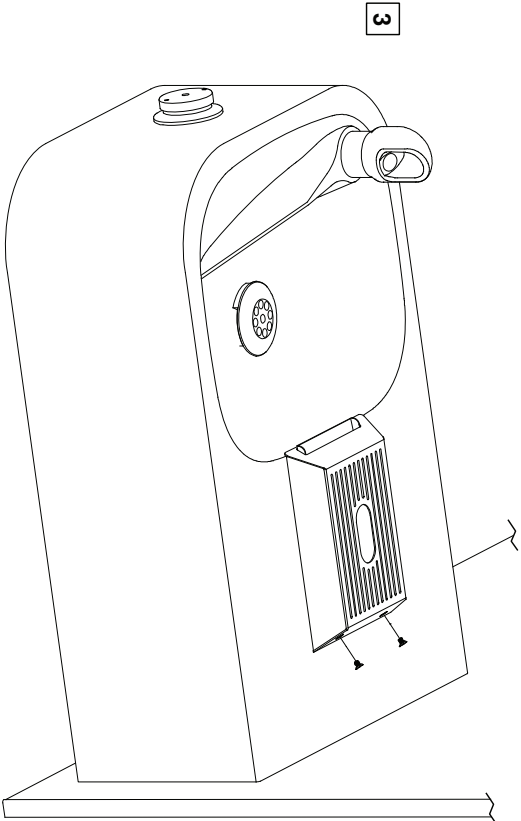
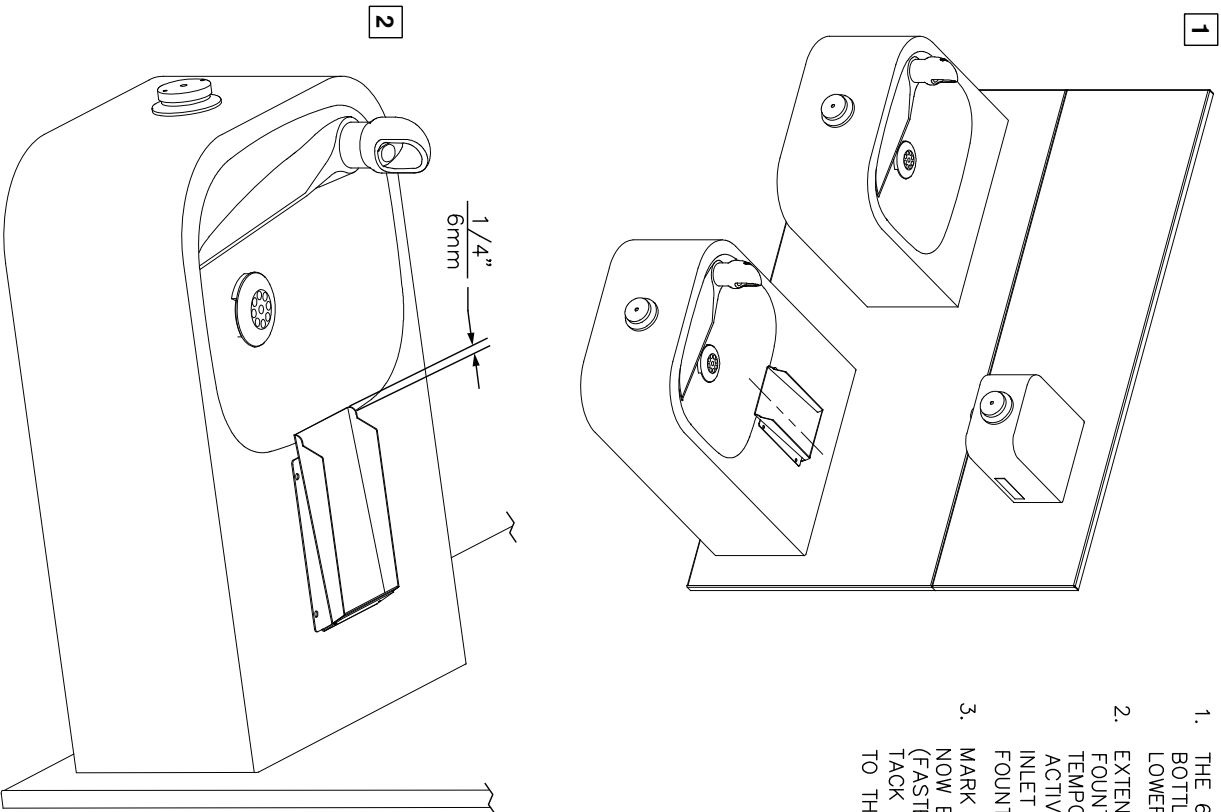
1920HO SERIES MOUNTING HOLE LOCATIONS  
(3/8"-16 UNC MOUNTING HARDWARE NOT SUPPLIED)



				1455 KLEPPE LANE SPARKS, NEVADA 89431 (775) 359-4712 FAX (775) 359-7424 E-MAIL: HAWS@HAWS.CO.COM WEBSITE: WWW.HAWS.CO.COM	
EQUIPMENT NO. 1920HO		MODEL(S)		1920HO/1920HPSHO/1920W	
DRAWN BY: B.M.		DATE: 05/10/07		REVISION: 0510001063.D	
APPROVED: B.M.		SCALE: N/A		SHEET 1 OF 6	

### 6469 BOTTLE FILLER DRIP TRAY INSTALLATION

1. THE 6469 BOTTLE FILLER DRIP TRAY ALLOWS THE INSTALLATION OF THE 1920 BOTTLE FILLER OVER HAWS 1109/1119 MODEL DRINKING FOUNTAINS. CENTER THE LOWER DRAIN PAN ALONG THE CENTERLINE OF THE FOUNTAIN.
2. EXTEND THE FRONT EDGE OF THE LOWER DRAIN PAN OVER THE EDGE OF THE FOUNTAIN BOWL, BY APPROXIMATELY 1/4" (6mm). IT IS RECOMMENDED TO TEMPORARILY TAPE THE DRAIN PAN IN PLACE, INSTALL THE TOP COVER, AND ACTIVATE THE BOTTLE FILLER TO VERIFY THE WATER STREAM IS ALIGNED TO THE INLET HOLE. VERIFY THE LIP OF THE TOP COVER HANGS OVER THE EDGE OF THE FOUNTAIN BOWL.
3. MARK THE DRAIN PAN HOLE LOCATIONS ON THE FOUNTAIN. THE DRAIN PAN CAN NOW BE PERMANENTLY INSTALLED USING AN APPROPRIATE FASTENING METHOD (FASTENERS NOT SUPPLIED). FASTENING OPTIONS INCLUDE THRU BOLTS, RIVETS, TACK WELDS, AND DOUBLE-SIDED FOAM TAPE. INSTALL THE TOP COVER AND SECURE TO THE DRAIN PAN WITH THE SUPPLIED 4-40 FLATHEAD SCREWS.



**Haws®**

1465 KILMER LANE  
SPARKS, NEVADA 89431  
(775) 359-4712 FAX (775) 359-7424  
E-MAIL: [HAWS@HAWS.CO.COM](mailto:HAWS@HAWS.CO.COM)  
WEBSITE: [WWW.HAWS.CO.COM](http://WWW.HAWS.CO.COM)

ENGINEERED BY: MJ	MODEL(S)
DRAWN: MJ	DRAWING: 6469 BOTTLE FILLER DRIP TRAY
DATE: 01/10/17	DATE: 01/10/17
APPROVED: FV	SCALE: 1:4
DATE: 01/10/17	DRAWING TYPE: INSTALLATION
SIZE: A	SHEET 1 OF 1
PART NUMBER: 0310000657.D	REVISION: 1