



**Haws**  
Since 1906

# model 1011MS-1920HO

ADA Vandal-Resistant Dual Fountain and Motion-Activated Bottle Filler

## FEATURES & BENEFITS

### CONSTRUCTION

Rugged ADA accessible 18 gauge Type 304 Stainless Steel swirl design bowls, 14 gauge Type 304 Stainless Steel brackets and bottle filler, and vandal-resistant bottom plates provides a long lasting unit with added peace of mind.

### BOTTLE FILLER

14-gauge Type 304 stainless steel bottle filler housing with touchless operation and 1 gpm (3.78 L) laminar flow with 30-second obstruction time-out.

### VANDAL RESISTANT

The bubbler heads, push button, round bowls, drain strainers and bottom plates are locked in place, discouraging unwanted vandalism, and 30-second obstruction time-out to reduce tampering of sensor.

### BUBBLER HEADS

Polished chrome-plated brass bubbler heads with integral laminar flow prevents splashing while providing a superior flow pattern. The integral 11/16" basin shank and stainless anti-rotational roll pin add vandal resistance strength. Shielded, angled stream opening provides a steady, sanitary source of drinking water at .45 gpm.

### FOUNTAIN VALVES

Bottle filler incorporates a touchless sensor operated stainless steel solenoid valve controlled by a transformer, and a push-button activated valve which offers the only all stainless-steel valve body that is machined out of solid bar stock and is fully serviceable through the front of the push button assembly offering access to the water control cartridge and integral water supply strainer on the fountain.

### MOUNTING

Galvanized frame and 10 gauge surface plate provide the maximum mounting strength, and allows front access of P-trap and stop, along with a 3/16" (.47 cm) thick steel mounting plate for bottle filler,

## OPTIONS

- Water Filter: Model 6480 filter kit with 3000 gallon carbon block filter, filter head, and mounting bracket.
- Mounting Plate: Model 6700R, on-wall mounting plate for model 1920.
- Bottle Filler Stand: Model BTL1001, add-on stainless steel stand to place bottle on when 1920 bottle filler is used.

For more information, visit [www.hawscow.com](http://www.hawscow.com) or call (888) 640-4297.



## SPECIFICATIONS

### 1011MS / MTGFR.DF2 / 1920HO / 6700 / BP32

Order these items to make up Model 1011MS-1920HO fountain with stainless steel back panel, touchless bottle filler with stainless steel back plate, and fountain mounting frame shown above.

### FOR INDOOR USE ONLY

## APPLICATIONS

Model 1011MS-1920HO ADA vandal-resistant wall-mounted drinking fountain and motion activated bottle filler shall include dual 18-gauge Type 304 Stainless Steel satin finish basins with integral swirl design, 14 gauge Type 304 Stainless Steel wall brackets and bottle filler bracket, in-wall mounting frame with lower access panel allowing for front access of P-trap and stop, 3/16" (.47 cm) thick steel mounting plate for bottle filler, 100% lead-free waterways, touchless sensor operated solenoid valve with 30-second obstruction time-out on the bottle filler, and vandal-resistant push-button operated stainless-steel valve with front-accessible cartridge and flow adjustment on the fountain, polished chrome-plated brass vandal resistant bubbler heads with integral laminar anti-squirt flow, 1gpm (3.78L) laminar flow bottle filler, chrome-plated brass vandal-resistant waste strainers, high and low fountain mounting levels, stainless steel satin finish back panels, and 1-1/4" O.D. (3.2 cm) waste pipes. Manufactured to be lead-free by all known definitions including NSF/ ANSI/CAN 61-Section 9, NSF/ANSI/ CAN 372, California Proposition 65, and the Federal Safe Drinking Water Act. Product is compliant to California Health and Safety Code 116875 (AB 1953-2006), and 116876 (AB 100) "NSF/ANSI/CAN 61: Q ≤ 1".



NOTES:

- 1

HOLD ROUGH-IN DIMENSIONS ±1/8" (3.2mm).
- 2

WHEN INSTALLING THIS UNIT, LOCAL, STATE, OR FEDERAL CODES SHOULD BE ADHERED TO FOR DIMENSIONS (LOCATIONS), WASTE AND SUPPLY REQUIREMENTS OTHER THAN SHOWN.
- 3

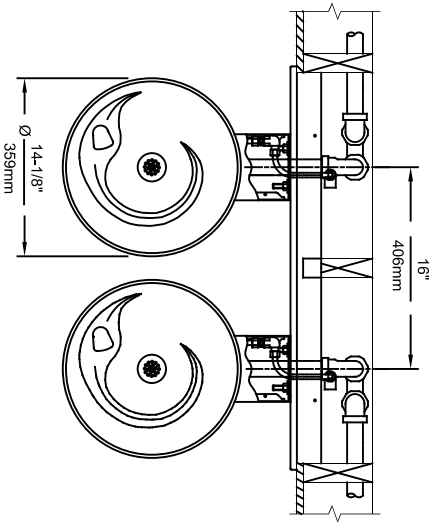
INSTALLER MUST PROVIDE TRAP FOR PROPER INSTALLATION.
- 4

HOLE COMBINATION SHOWN BELOW IS FOR USE WITH LOW FOUNTAIN ON THE RIGHT AND HIGH FOUNTAIN ON THE LEFT. USE OPPOSITE HOLES FOR HIGH ON RIGHT AND LOW ON LEFT.
- 5

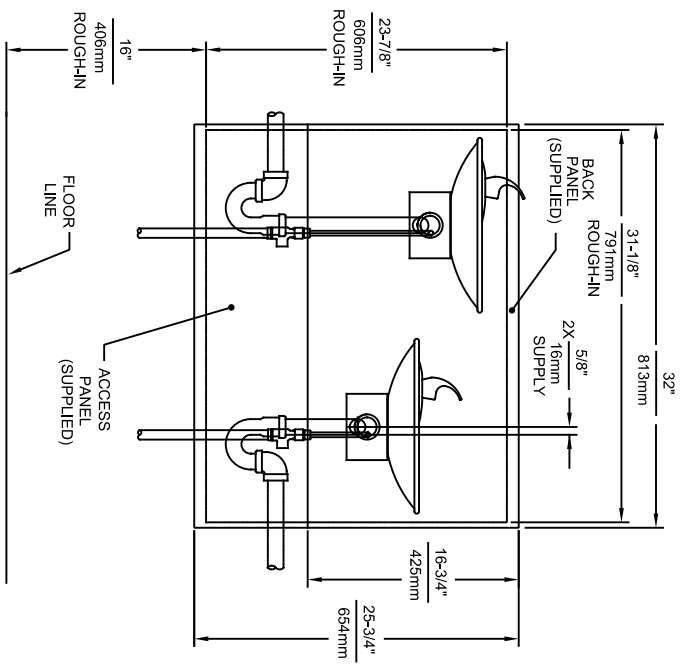
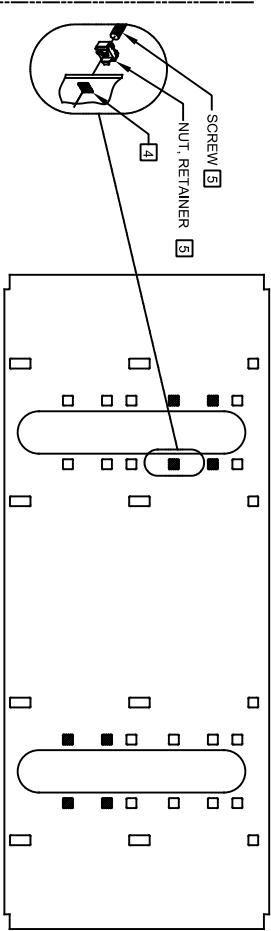
TO CHANGE FOUNTAIN MTG. SCREW LOCATIONS: FIRST REMOVE SCREWS AND THEN SQUEEZE CLIPS ON NUT RETAINER TO POP OUT. SNAP INTO NEW POSITIONS FROM BACKSIDE AND RE-ASSEMBLE SCREWS.
- 6

IMPORTANT: A L.H. LOW (OPTIONAL) CONFIGURATION WILL REQUIRE A DIFFERENT BACK PANEL AND THE WASTE AND SUPPLY DIMENSIONS SHOWN (?) MUST BE REVERSED.
- 7

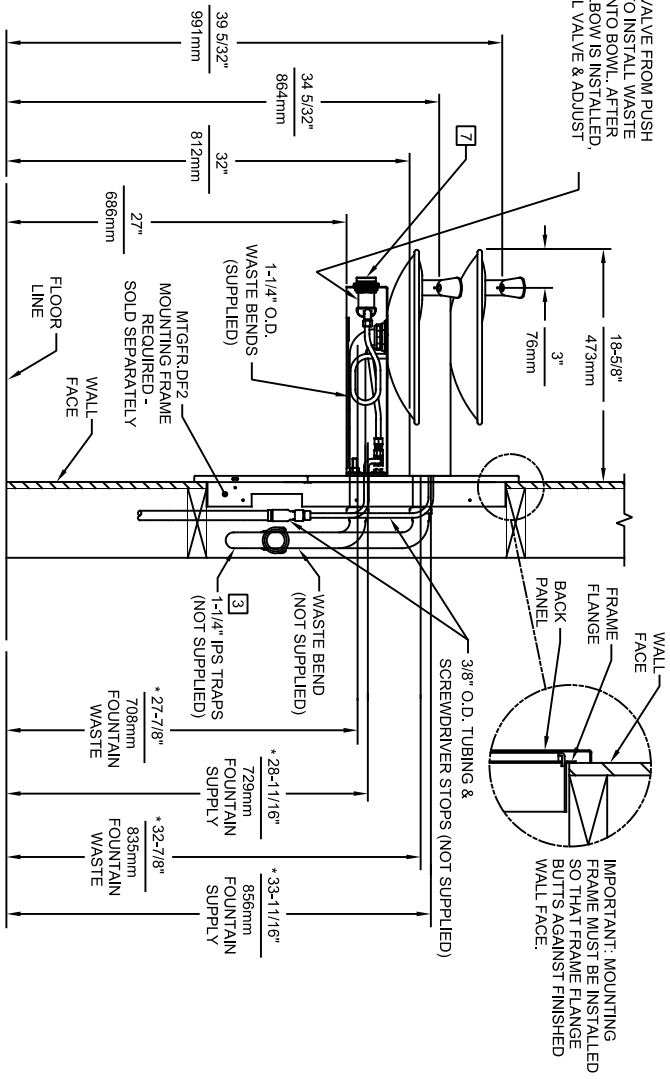
REFER TO 5874 SERIES OPERATION AND MAINTENANCE MANUAL FOR PUSH BUTTON AND VALVE INSTALLATION/MAINTENANCE INSTRUCTIONS.





BOWL MOUNTING PATTERN DETAIL



REMOVE VALVE FROM PUSH  
BUTTON TO INSTALL WASTE  
ELBOW ONTO BOWL. AFTER  
WASTE ELBOW IS INSTALLED,  
REINSTALL VALVE & ADJUST  
FLOW





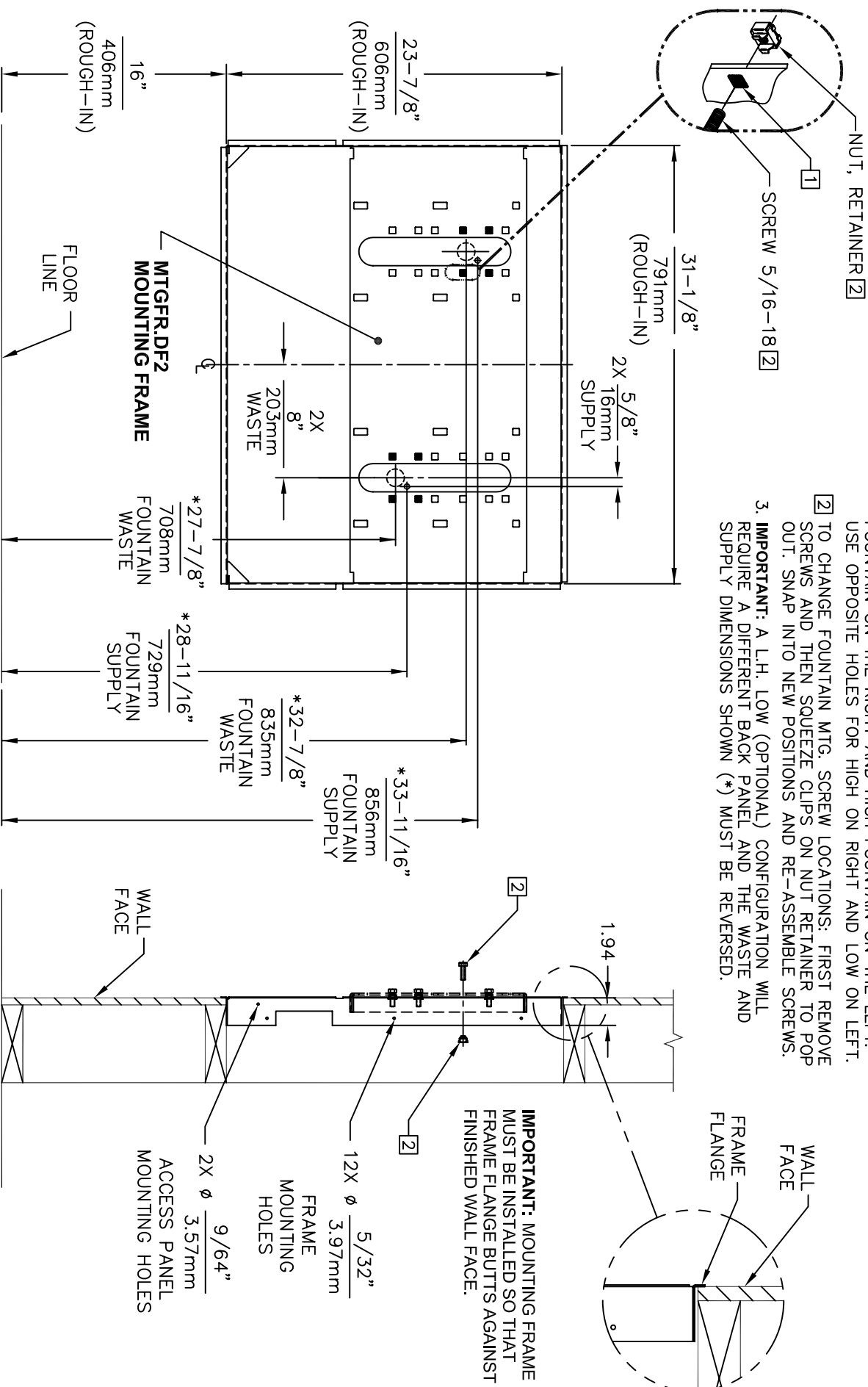
1456 KLEPPE LANE  
SPARKS, NEVADA 89431  
(775) 359-4712 FAX (775) 359-7424  
E-MAIL: HAWS@HAWS.CO.COM  
WEBSITE: WWW.HAWS.CO.COM

ECN NO. REVISED PER BY:		MODEL(S)	
DRAWN:	DATE:	CHKD.:	JL
PM	08/02/99	JSLP	
APPROVED:	DATE:	SCALE:	DRAWING TYPE:
JL	04/29/24	1:16	INSTALLATION
SIZE: A		SHEET 1 OF 1	
PART NUMBER		REVISION	
0002076519.D		13	

1011MS

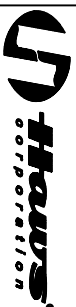
## NOTES:

- [1] HOLE COMBINATION SHOWN BELOW IS FOR USE WITH LOW FOUNTAIN ON THE RIGHT AND HIGH FOUNTAIN ON THE LEFT. USE OPPOSITE HOLES FOR HIGH ON RIGHT AND LOW ON LEFT.
- [2] TO CHANGE FOUNTAIN MTG. SCREW LOCATIONS: FIRST REMOVE SCREWS AND THEN SQUEEZE CLIPS ON NUT RETAINER TO POP OUT. SNAP INTO NEW POSITIONS AND RE-ASSEMBLE SCREWS.
3. **IMPORTANT:** A L.H. LOW (OPTIONAL) CONFIGURATION WILL REQUIRE A DIFFERENT BACK PANEL AND THE WASTE AND SUPPLY DIMENSIONS SHOWN (\*) MUST BE REVERSED.



4. HOLD ROUGH-IN DIMENSIONS  $\pm 1/8"$  (3.2mm).
5. WHEN INSTALLING THIS UNIT, LOCAL, STATE OR FEDERAL CODES SHOULD BE ADHERED TO. FOR INSTALLATION HEIGHTS OTHER THAN SHOWN, DIMENSIONS MARKED (\*) MUST BE ADJUSTED ACCORDINGLY.

## FOR USE WITH MODELS: 1011MS & 1011HPSMS

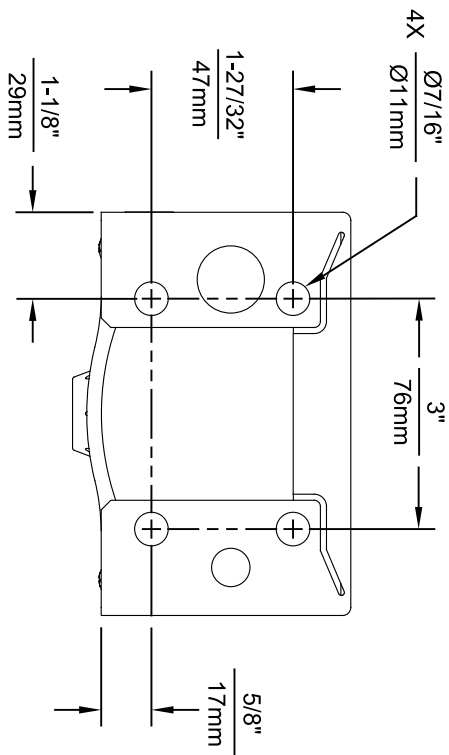
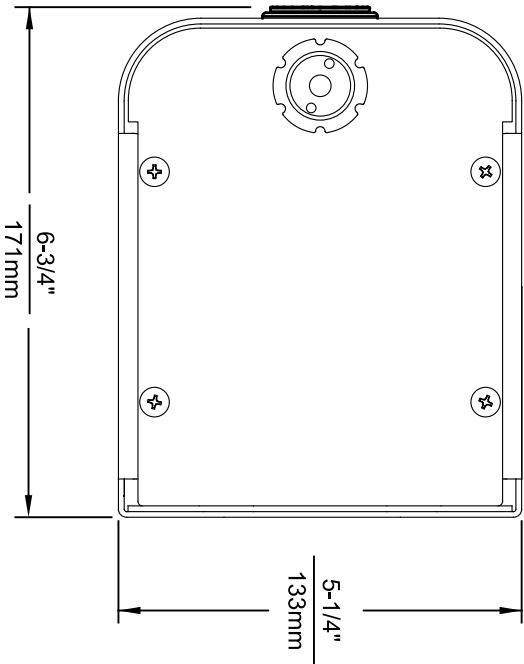
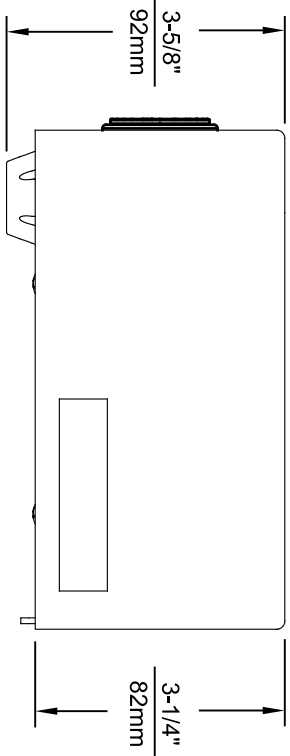


INFO FAX : 1-888-FAX-HAWS (1-888-329-4297)

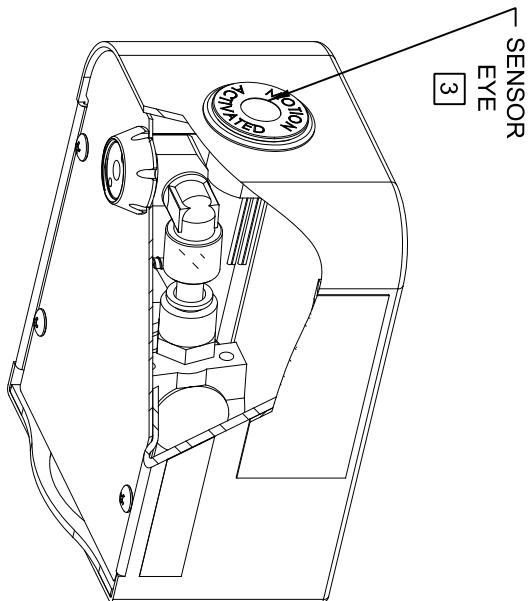
1455 Kieppe Ln, Sparks, NV, 89431  
Phone: 775-359-4712; Fax: 775-359-7424

Haws Ag, Bachweg 3, CH-3401 Burgdorf, Switzerland  
Haws Mtg Pte Ltd, 74 Sungai Kadut Loop, Singapore 729531  
e-mail: Haws@hawsco.com website: www.hawsco.com

FOR NO. 1	REVISION	DATE	BY	CHKD	DATE	MODEL(S): MOUNTING FRAME	MTGFR.DF2	INFO FAX DOC #	26843732	DRAWING TYPE	INSTALLATION/FABRICATION	SCALE	1:10	DATE	10/02/97	REV	1
0002080297																	




1920HO SERIES MOUNTING HOLE LOCATIONS  
(3/8"-16 UNC MOUNTING HARDWARE NOT SUPPLIED)



NOTES:

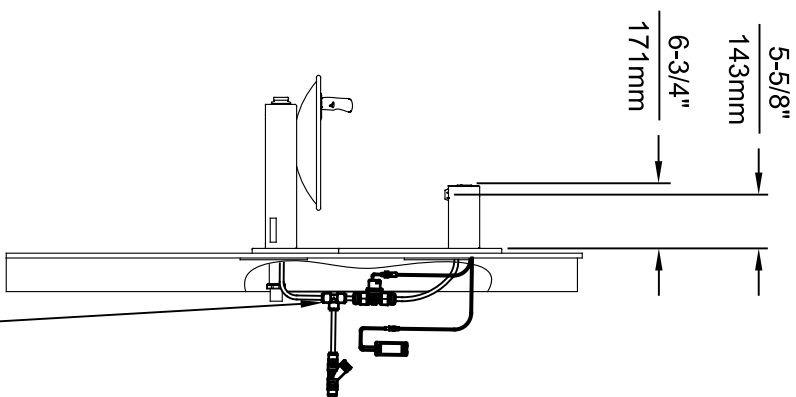
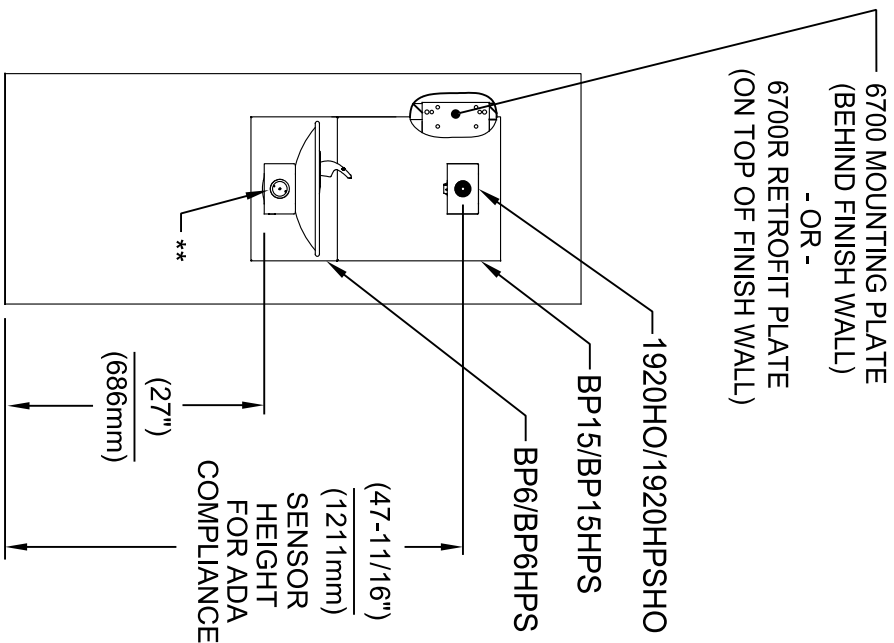
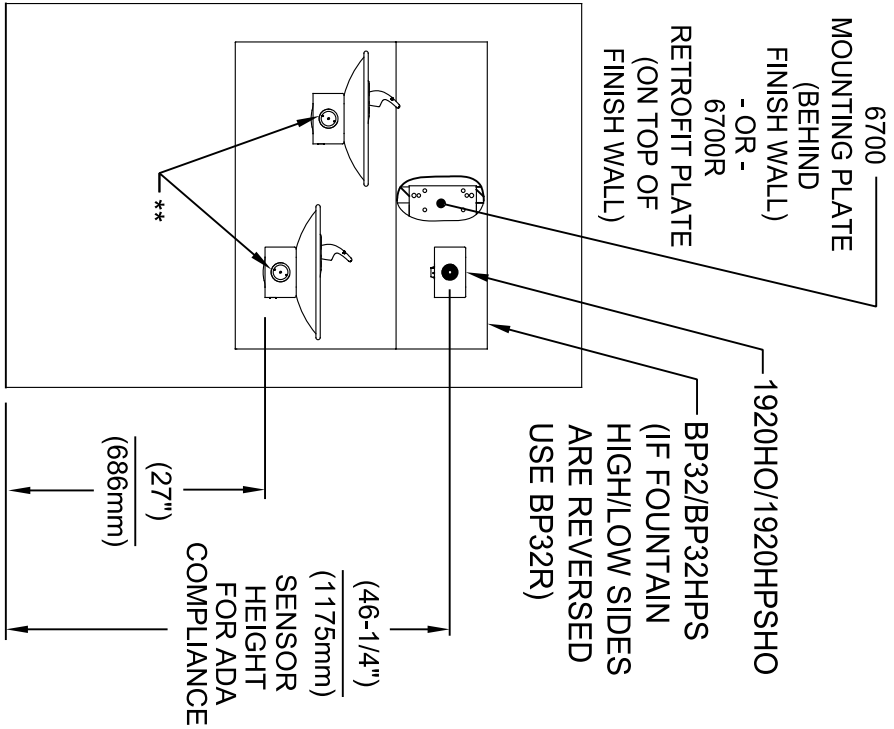
1. SEE SHEETS 2 THRU 7 FOR BOTTLE FILLER ADULT ADA HEIGHT APPLICATIONS AND SHEET 8 FOR CHILD ADA HEIGHT APPLICATIONS.
2. WHEN INSTALLING THIS UNIT, LOCAL, STATE OR FEDERAL CODES SHOULD BE ADHERED TO FOR INSTALLATION LOCATIONS, WASTE AND SUPPLY REQUIREMENTS OTHER THAN SHOWN.
- 3 REFER TO 1RKHO.H OPERATION & MAINTENANCE INSTRUCTIONS FOR SENSOR SETUP.



**Haws®**  
Since 1906

1455 KLEPPLE LANE  
SPARKS, NE/VADA 689431  
(775) 359-4712 FAX (775) 359-1424  
E-MAIL: HAWS@HAWS.CO.COM  
WEBSITE: WWW.HAWS.CO.COM

EON NO. REVISED PERBY:		MODEL(S)		INSTALLATION	
5574	EON 6136	FV	1920HO/1920HPSHO/1920WHO	SCALE: N/A	DRAWING TYPE:
DATE:	CHK'D:	DATE:		SIZE: A1	SHEET: 1 OF 8
08/18/20	KAM				
APPROVED: FV			PART NUMBER		
			0510001063.D		
			REVISION		
			8		



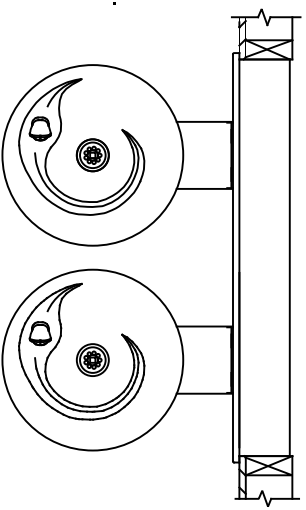
### INSTALLATION ABOVE HAWS 1011 & H1011.8 SERIES

### INSTALLATION ABOVE HAWS 1001 & H1001.8 SERIES

\* IF YOUR FOUNTAIN IS THIS STYLE USE THESE DIMENSIONS

1. SEE SEPARATE INSTALLATION DRAWINGS FOR MOUNTING PLATES AND BACK PANELS (SHOWN FOR REFERENCE - NOT SUPPLIED).

2. WHEN INSTALLING THIS UNIT, LOCAL, STATE OR FEDERAL CODES SHOULD BE ADHERED TO FOR INSTALLATION LOCATIONS, WASTE & SUPPLY REQUIREMENTS OTHER THAN SHOWN.



\*\* EXISTING PUSH BUTTON ASSEMBLY SHOWN, CAN BE CONVERTED TO HANDS OFF STYLE, USING RETRO-FIT KIT MODEL 1RKHO.H OR 2RKHO.H DEPENDING ON CUSTOMER REQUIREMENTS.

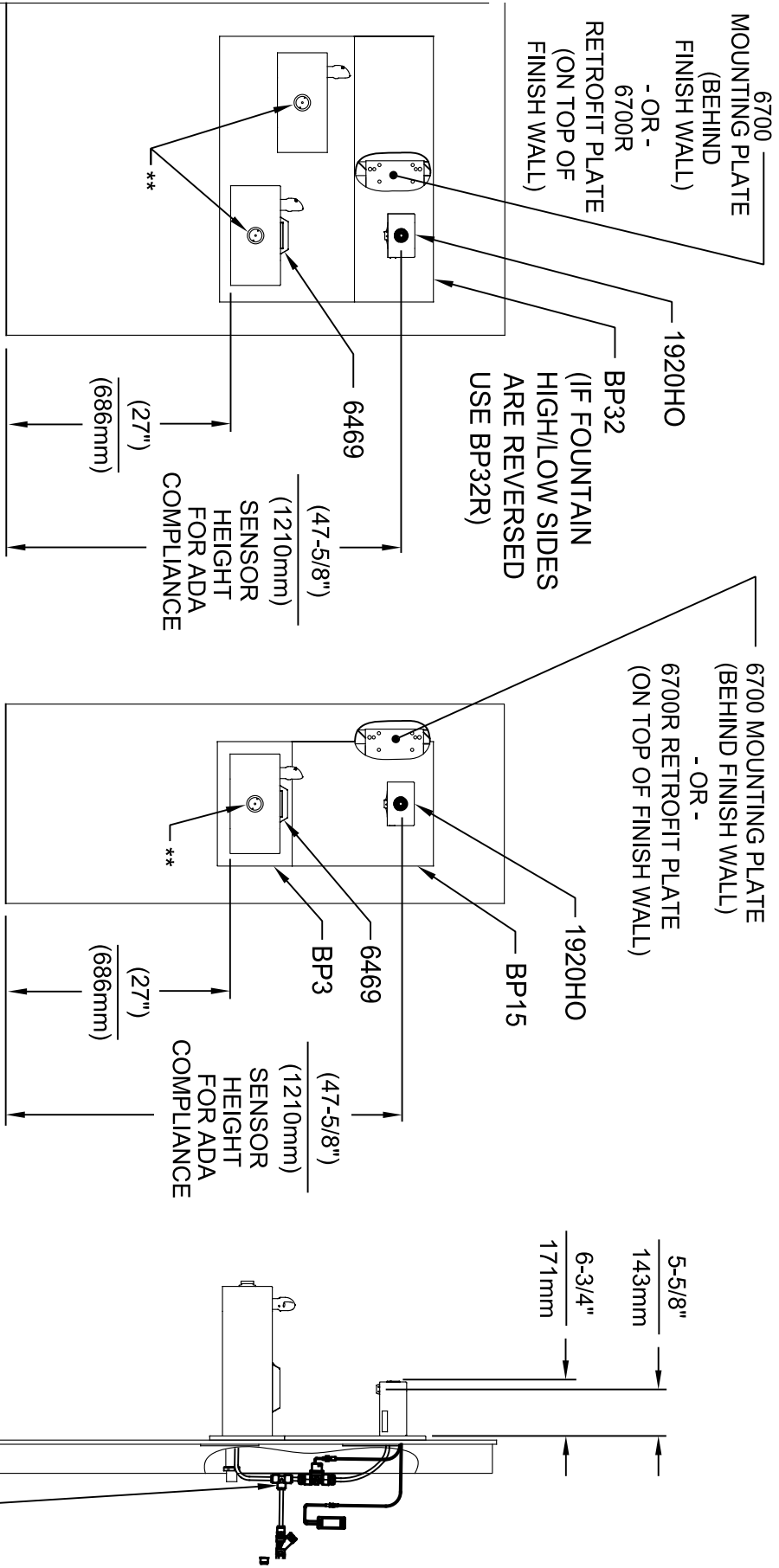
3/8" O.D. SUPPLY TUBING AND 3/8" O.D. PUSH-IN TEE SUPPLIED. (CONNECT TO FOUNTAIN SUPPLY LINE)



**Haws®**  
Since 1906

1455 KLEPPLE LANE  
SPARKS, NE/VADA 89431  
(775) 359-4712 FAX (775) 359-1424  
E-MAIL: HAWS@HAWS.CO.COM  
WEBSITE: WWW.HAWS.CO.COM

ECN NO. REVISED PERBY:	MODEL(S)	INSTALLATION
5574 / ECN 6136	1920HO/1920HPSHO/1920WHO	SIZE: A1 SHEET: 2 OF 8
DRAWN: FV	DATE: 08/18/20	REVISION: 8
APPROVED: FV	DATE: 11/04/24	



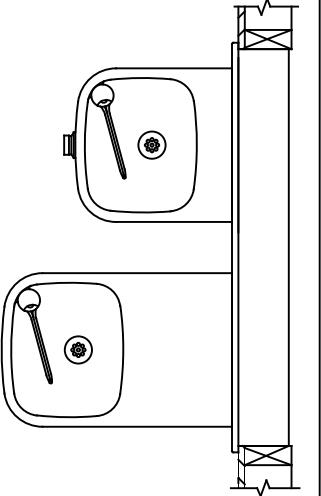
**INSTALLATION ABOVE HAWS 1119 & H1119.8 SERIES**

**INSTALLATION ABOVE HAWS 1109 & H1109.8 SERIES  
SEE SHEET 8 FOR INSTALLATION AT CHILD HEIGHT**

\* IF YOUR FOUNTAIN IS THIS STYLE USE THESE DIMENSIONS

1. SEE SEPARATE INSTALLATION DRAWINGS FOR MOUNTING PLATES, BACK PANELS AND DRIP TRAY (NOT SUPPLIED).

2. WHEN INSTALLING THIS UNIT, LOCAL, STATE OR FEDERAL CODES SHOULD BE ADHERED TO FOR INSTALLATION LOCATIONS, WASTE & SUPPLY REQUIREMENTS OTHER THAN SHOWN.



\*\* EXISTING PUSH BUTTON ASSEMBLY SHOWN, CAN BE CONVERTED TO HANDS OFF STYLE, USING RETRO-FIT KIT MODEL 1RKHO.H OR 2RKHO.H DEPENDING ON CUSTOMER REQUIREMENTS.

3/8" O.D. SUPPLY TUBING AND 3/8" O.D. PUSH-IN TEE SUPPLIED. (CONNECT TO FOUNTAIN SUPPLY LINE)



**Haws®**  
Since 1906

1455 KLEPPLE LANE  
SPARKS, NEVADA 89431  
(775) 359-4712 FAX (775) 359-1424  
E-MAIL: HAWS@HAWS.CO.COM  
WEBSITE: WWW.HAWS.CO.COM

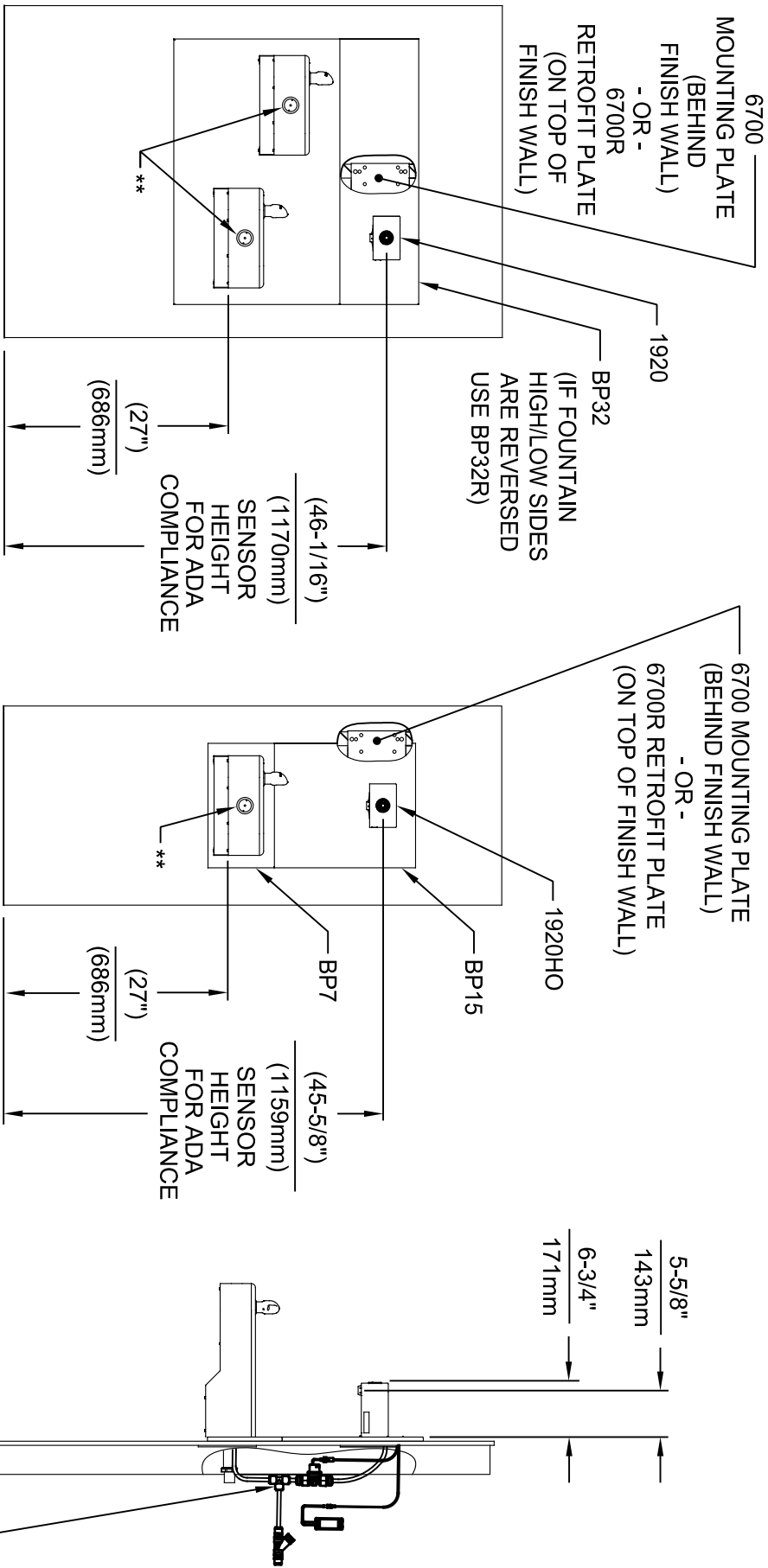
ECN NO. REVISED PERBY: FV  
5574 ECN 6136 FV  
DRAWN: DATE: CHKD: FV  
08/18/20 KAM

MODEL(S)  
1920HO/1920HPSHO/1920WHO

SCALE: N/A DRAWING TYPE: INSTALLATION

SIZE: A1 SHEET 3 OF 8

PART NUMBER  
0510001063.D  
REVISION  
8



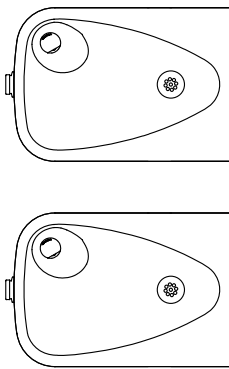
**INSTALLATION ABOVE HAWS 1117L & H1117.8 SERIES**

**INSTALLATION ABOVE HAWS 1107L & H1107.8 SERIES  
SEE SHEET 8 FOR INSTALLATION AT CHILD HEIGHT**

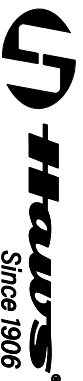
\* IF YOUR FOUNTAIN IS THIS STYLE USE THESE DIMENSIONS

1. SEE SEPARATE INSTALLATION DRAWINGS FOR MOUNTING PLATES AND BACK PANELS (SHOWN FOR REFERENCE - NOT SUPPLIED).

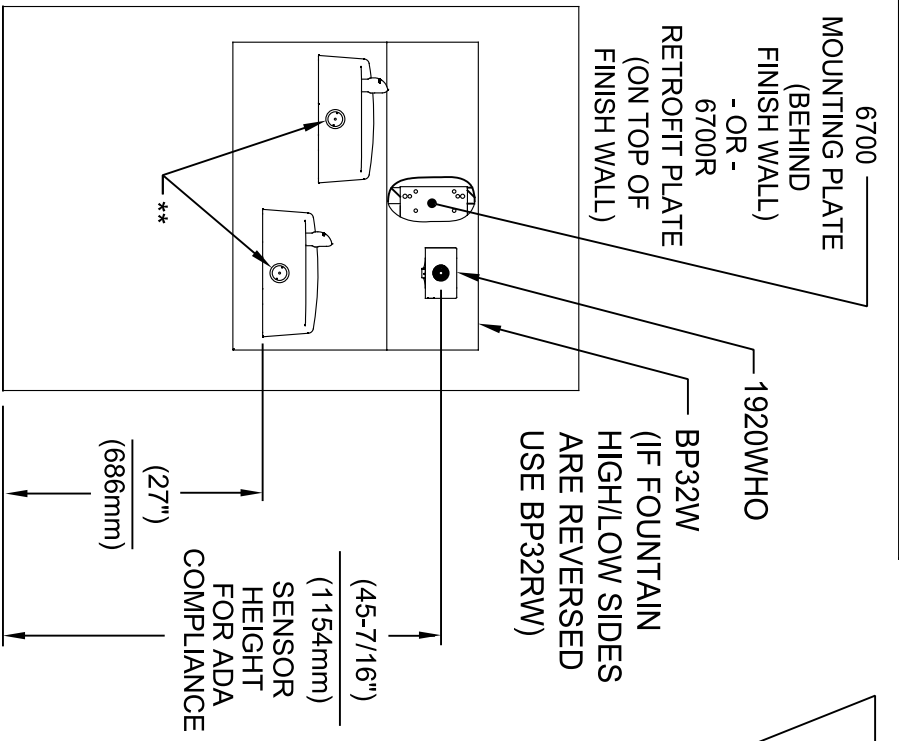
2. WHEN INSTALLING THIS UNIT, LOCAL, STATE OR FEDERAL CODES SHOULD BE ADHERED TO FOR INSTALLATION LOCATIONS, WASTE & SUPPLY REQUIREMENTS OTHER THAN SHOWN.



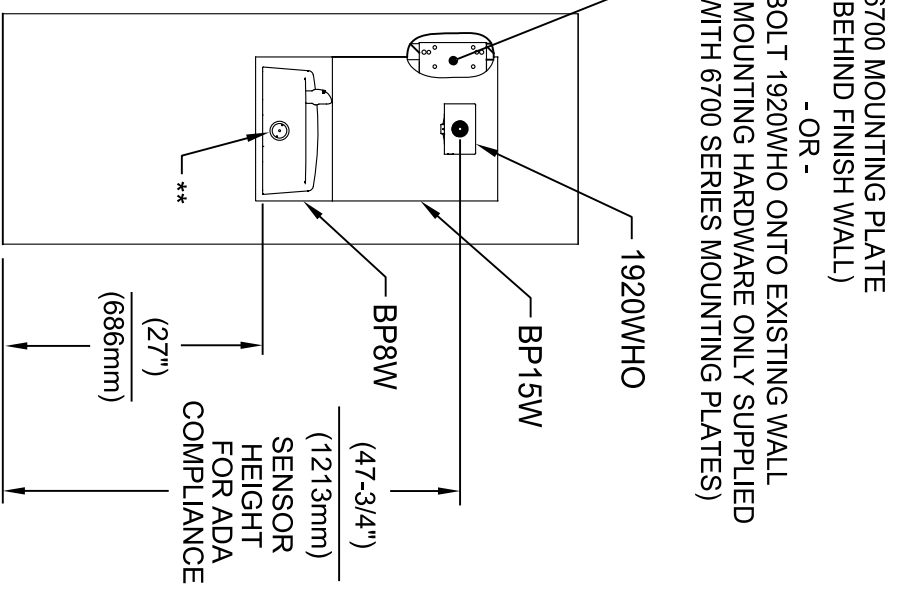
\*\* EXISTING PUSH BUTTON ASSEMBLY SHOWN, CAN BE CONVERTED TO HANDS OFF STYLE, USING RETRO-FIT KIT MODEL 1RKHO.H OR 2RKHO.H DEPENDING ON CUSTOMER REQUIREMENTS.



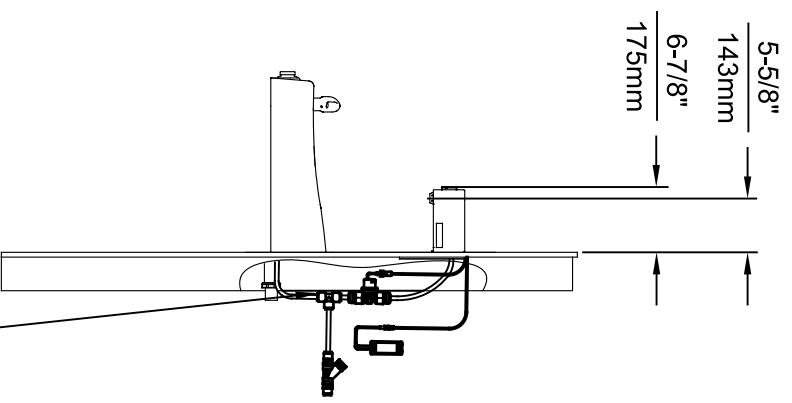
ECON NO. REVISED PERBY:		MODEL(S)		SCALE: N/A		DRAWING TYPE:		INSTALLATION	
5574	ECON 6136	FV	1920HO/1920HPSHO/1920WHO	1/16" & 2/4"	1/16" & 2/4"	1/16" & 2/4"	1/16" & 2/4"	1/16" & 2/4"	1/16" & 2/4"
DRAWN:		DATE:	CHKD:	PART NUMBER		REVISION		SIZE: A1	
FV		08/18/20	KAM	0510001063.D		8		SHEET 4 OF 8	
APPROVED:		DATE:	11/04/24	1455 KLEPPLE LANE		SPARKS, NEVADA 89431		(775) 359-4712 FAX (775) 359-1424	
FV		08/18/20	KAM	E-MAIL: HAWS@HAWS.CO.COM		WEBSITE: WWW.HAWS.CO.COM		1455 KLEPPLE LANE	
FV		08/18/20	KAM	1455 KLEPPLE LANE		SPARKS, NEVADA 89431		(775) 359-4712 FAX (775) 359-1424	
FV		08/18/20	KAM	E-MAIL: HAWS@HAWS.CO.COM		WEBSITE: WWW.HAWS.CO.COM		1455 KLEPPLE LANE	
FV		08/18/20	KAM	1455 KLEPPLE LANE		SPARKS, NEVADA 89431		(775) 359-4712 FAX (775) 359-1424	
FV		08/18/20	KAM	E-MAIL: HAWS@HAWS.CO.COM		WEBSITE: WWW.HAWS.CO.COM		1455 KLEPPLE LANE	



INSTALLATION ABOVE HAWS 1501

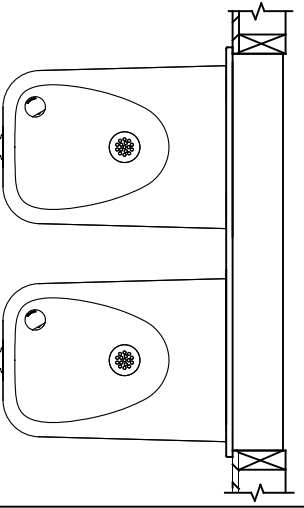


INSTALLATION ABOVE HAWS 1311  
SEE SHEET 8 FOR INSTALLATION AT CHILD HEIGHT



\* IF YOUR FOUNTAIN IS THIS STYLE USE THESE DIMENSIONS

1. SEE SEPARATE INSTALLATION DRAWINGS FOR MOUNTING PLATES AND BACK PANELS (SHOWN FOR REFERENCE - NOT SUPPLIED).
2. WHEN INSTALLING THIS UNIT, LOCAL, STATE OR FEDERAL CODES SHOULD BE ADHERED TO FOR INSTALLATION LOCATIONS, WASTE & SUPPLY REQUIREMENTS OTHER THAN SHOWN.



\*\* EXISTING PUSH BUTTON ASSEMBLY SHOWN, CAN BE CONVERTED TO HANDS OFF STYLE, USING RETRO-FIT KIT MODEL 1RKHO.H OR 2RKHO.H DEPENDING ON CUSTOMER REQUIREMENTS.

3/8" O.D. SUPPLY TUBING AND 3/8" O.D. PUSH-IN TEE SUPPLIED. (CONNECT TO FOUNTAIN SUPPLY LINE)



**HAWS**  
Since 1906

1455 KLEPPER LANE  
SPARKS, NEVADA 89431  
(775) 359-4712 FAX (775) 359-1424  
E-MAIL: HAWS@HAWS.CO.COM  
WEBSITE: WWW.HAWS.CO.COM

ECN NO. REVISED PERBY: 5574  
DATE: 08/18/20  
FV: KM

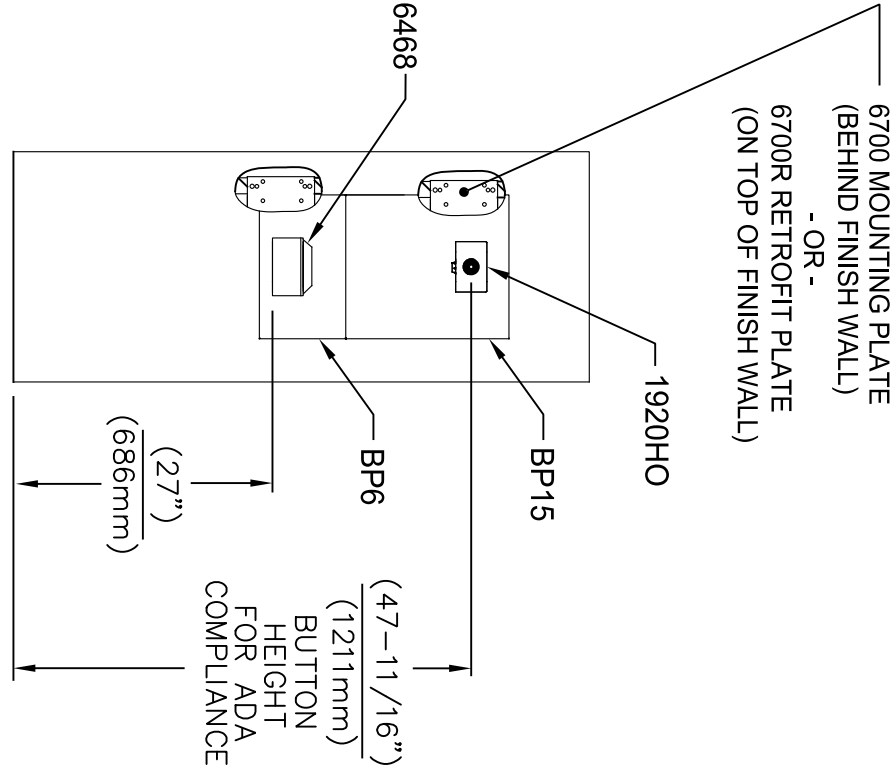
MODEL(S): 1920HO/1920HPSHO/1920WHO

PART NUMBER: 0510001063.D  
REVISION: 8

APPROVED: DATE: SCALE: N/A DRAWING TYPE: INSTALLATION SIZE: A1 SHEET: 5 OF 8

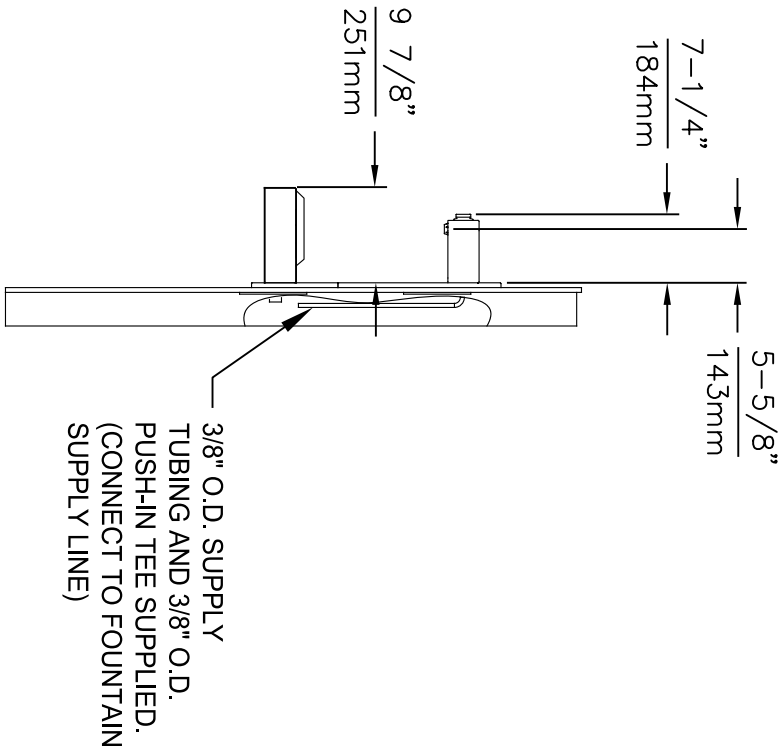







**INSTALLATION ABOVE 6468**

1. SEE SEPARATE INSTALLATION DRAWINGS FOR MOUNTING PLATES AND BACK PANELS (SHOWN FOR REFERENCE - NOT SUPPLIED).
2. WHEN INSTALLING THIS UNIT, LOCAL, STATE OR FEDERAL CODES SHOULD BE ADHERED TO FOR INSTALLATION LOCATIONS, WASTE & SUPPLY REQUIREMENTS OTHER THAN SHOWN.

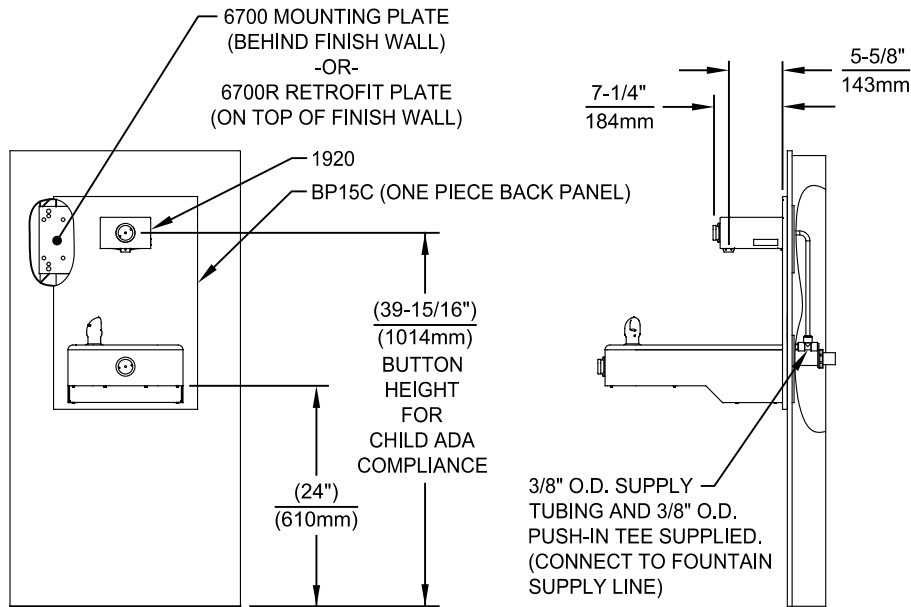




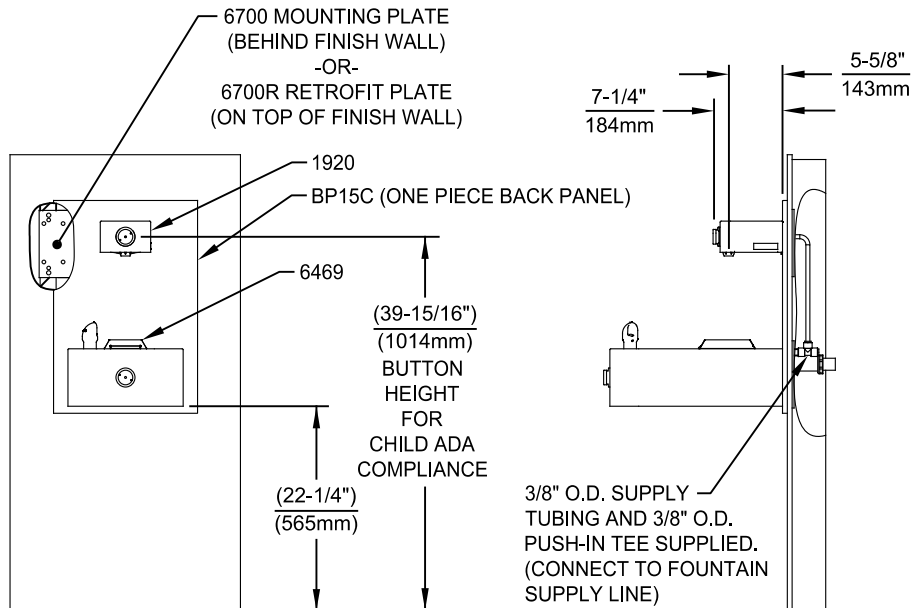
**Haws®**  
Since 1906

1455 KLEPPLE LANE  
SPARKS, NE/VADA 89431  
(775) 359-4712 FAX (775) 359-1424  
E-MAIL: HAWS@HAWS.CO.COM  
WEBSITE: WWW.HAWS.CO.COM

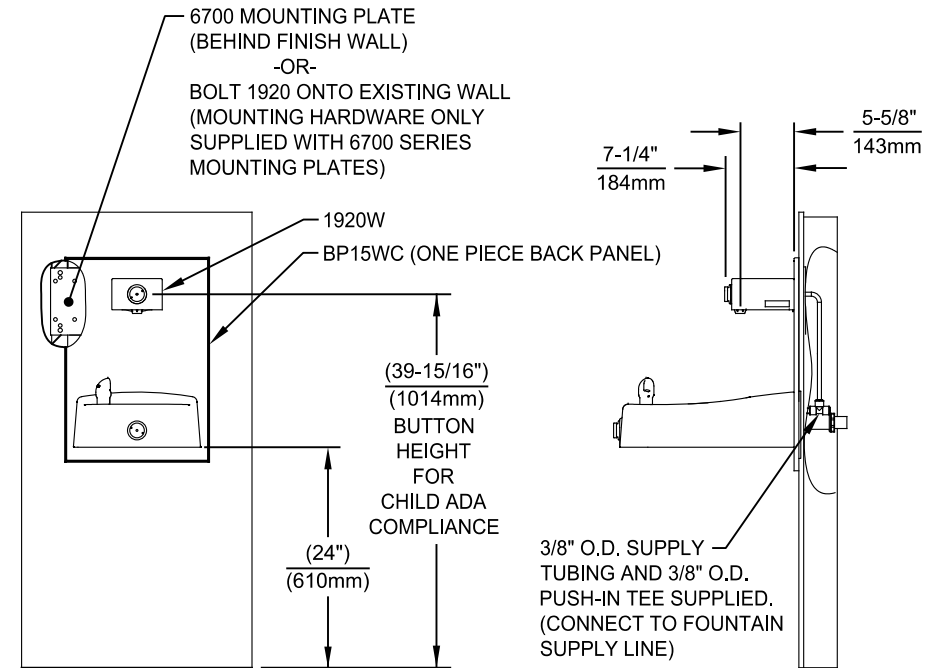
ECON NO. REVISED PERBY:		MODEL(S)	
5744	ECON 6136	1920HO/1920HPSHO/1920WHO	
DRAWN:	DATE:	CHKD:	PART NUMBER
FV	10/04/21	KML	0510001063.D
APPROVED:	DATE:	SCALE:	REVISION
FV	11/04/24	N/A	8
DRAWING TYPE:		SIZE: A1 SHEET: 7 OF 8	
INSTALLATION			



**INSTALLATION ABOVE HAWS 1107L & H1107.8 SERIES**



**INSTALLATION ABOVE HAWS 1109, 1109.14 & H1109.8 SERIES  
MUST USE PARALLEL APPROACH WITH THIS BOWL COMBINATION**



**INSTALLATION ABOVE HAWS 1311**

**NOTES:**

- HEIGHT DIMENSIONS SHOWN ARE FOR CHILD ADA APPLICATIONS:  
- BOTTLE FILLER HEIGHT AT 40\" MAX.  
- DRINKING FOUNTAIN BUBBLER HEIGHT AT 30\" MAX.  
(SEE SHEETS 3, 4 & 5 FOR ADULT ADA HEIGHT DIMENSIONS)
- SEE SEPARATE INSTALLATION DRAWINGS FOR MOUNTING PLATES AND BACK PANELS (SHOWN FOR REFERENCE - NOT SUPPLIED).
- WHEN INSTALLING THIS UNIT, LOCAL, STATE OR FEDERAL CODES SHOULD BE ADHERED TO FOR INSTALLATION LOCATIONS, WASTE & SUPPLY REQUIREMENTS OTHER THAN SHOWN.




1455 KLEPPE LANE  
SPARKS, NEVADA 89431  
(775) 359-4712 FAX (775) 359-7424  
E-MAIL: HAWS@HAWS.CO.COM  
WEBSITE: WWW.HAWS.CO.COM

ECN NO. 5744	REVISED PER ECN: 6136	BY: FV	MODEL(S) 1920HO/1920HPSHO/1920WHO	PART NUMBER 0510001063.D
DRAWN: FV	DATE: 02/26/24	CHK'D: KM		REVISION 8
APPROVED: FV	DATE: 11/04/24	SCALE: N/A	DRAWING TYPE: INSTALLATION	SIZE: A SHEET 8 OF 8

6700 INDEX

INSTALLATION WITH:	TYPICAL USES	SEE SHEET ...
GENERAL INSTALLATION	IMPORTANT INFORMATION FOR ALL INSTALLATIONS	3 OF 6
1001 BOWLS	HAWS SERIES 1001X, 1001.8X	3 OF 6
1107 BOWLS	HAWS SERIES 1107X, 1107.8X	3 OF 6
1109 BOWLS	HAWS SERIES 1109X, 1109.8X	3 OF 6
1047 BOWLS	HAWS SERIES 1047	4 OF 6
1011 BOWLS	HAWS SERIES 1011X, 1011.8X	4 OF 6
1119 BOWLS	HAWS SERIES 1119X, 1119.8X	4 OF 6
1117 BOWLS	HAWS SERIES 1117X, 1117.8X	5 OF 6
1311 BOWLS	HAWS SERIES 1311	5 OF 6
1501 BOWLS	HAWS SERIES 1501	5 OF 6
CHILD HEIGHT	HAWS 1107PCH, 1109PCH, 1311PCH	6 OF 6



Haws

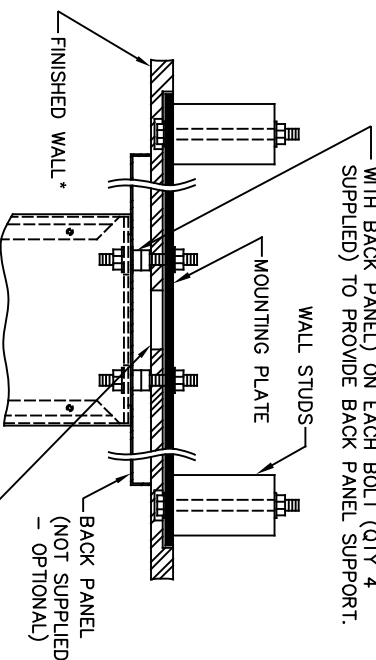
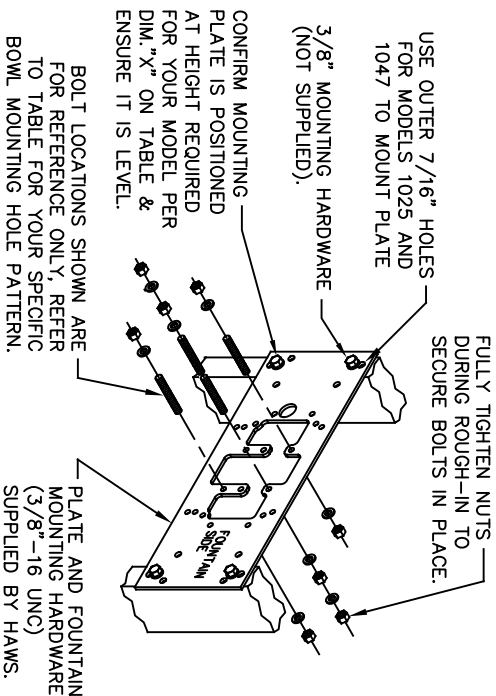
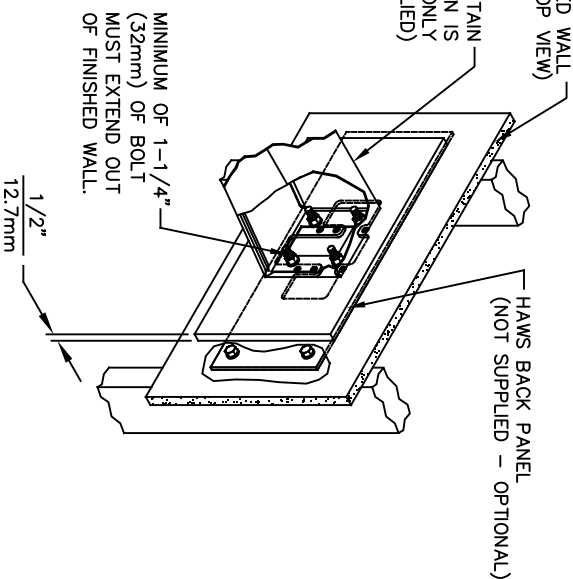
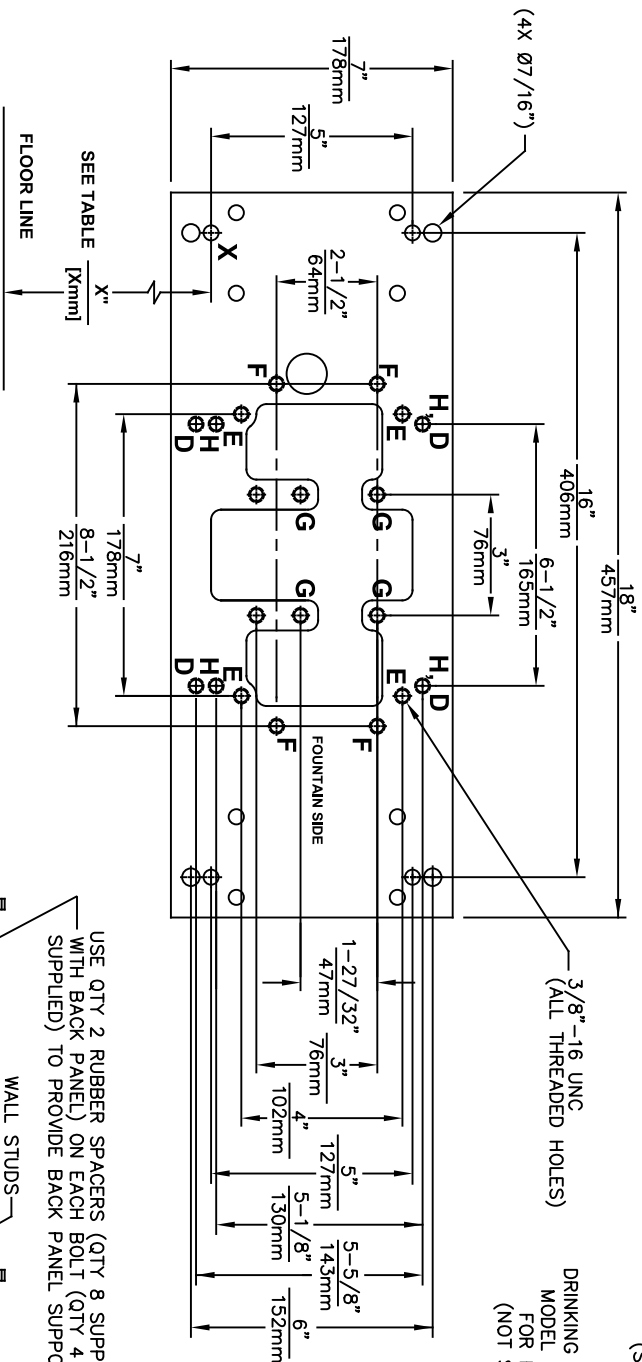
Since 1906

1455 KLEPPE LANE  
SPARKS, NEVADA 89431  
(775) 359-4712 FAX (775) 359-7424  
E-MAIL: HAWS@HAWS.CO.COM  
WEBSITE: WWW.HAWS.CO.COM

ECN NO. REVISED PER BY: JG  
DRAWN: JG  
DATE: 10/03/24  
APPROVED: JG

MODEL(S)  
67/00

PART NUMBER  
0002080016  
REVISION  
26



DRINKING FOUNTAIN (ONLY) AT 27" ADULT HEIGHT (SEE SPECIFIC MODEL O&M'S FOR OTHER HEIGHTS)			
MODEL	USE BOWL MTG. HOLE PATTERN	USE "X" DIM. BELOW TO POSITION MOUNTING PLATE HOLE "X"	
1001	"G"	25-3/8" [645mm]	
1025	"D"	28-1/8" [714mm]	
1047	"E"	24-3/8" [619mm]	
1105	"H"	34-5/16" [872mm]	
1107	"F"	26-3/16" [665mm]	
1109	"H"	27-5/16" [694mm]	
1109.14	"H"	27-5/16" [694mm]	
1109FR	"H"	27-5/16" [694mm]	
1311	"E"	26-3/4" [679mm]	
WASTE DRIP TRAY (ONLY) AT 27" ADULT HEIGHT			
6468	"G"	25-3/8" [645mm]	
1922	"G"	25-3/8" [645mm]	

**TOP VIEW**

**6700 MOUNTING PLATE**

**FOR USE WITH**

**DRINKING FOUNTAINS**

**AND WASTE DRIP TRAYS**

**AT 27" ADULT HEIGHT**

**(SEE SHEETS 2 - 5 FOR USE WITH**


**BOTTLE FILLER 1920/1920HO SERIES**

**AND CHILD HEIGHT APPLICATIONS)**

**\*\*FINISH WALL OVER MOUNTING PLATE AND BEHIND BACK PANEL. MAKE SURE THAT FINISHED WALL EXTENDS WITHIN THE BRACKET/BOWL MOUNTING HOLES (TO PROVIDE SURFACE AREA FOR RUBBER SPACERS TO CONTACT).**

## CAUTION

REGARDING CONCRETE/MASONRY WALL MOUNTING: DO NOT SECURE MOUNTING PLATE TO SAME SIDE OF WALL AS FOUNTAIN. AVOID COMPROMISING INTEGRITY OF WALL WHEN ANCHORING FOUNTAIN. IT IS RECOMMENDED THAT INSTALLER CALL TECHNICAL SUPPORT IF THERE ARE ANY QUESTIONS AS TO HOW TO OBTAIN A PROPER ANCHOR IN CONCRETE/MASONRY WALLS. 1-800-766-5612



**Haws®**  
Since 1906

ECN NO. REVISED PERBY: 6700

DRAWN: 6700

CAL: 6700

APPROVED: 6700

DATE: 02/11/25

SCALE: N/A

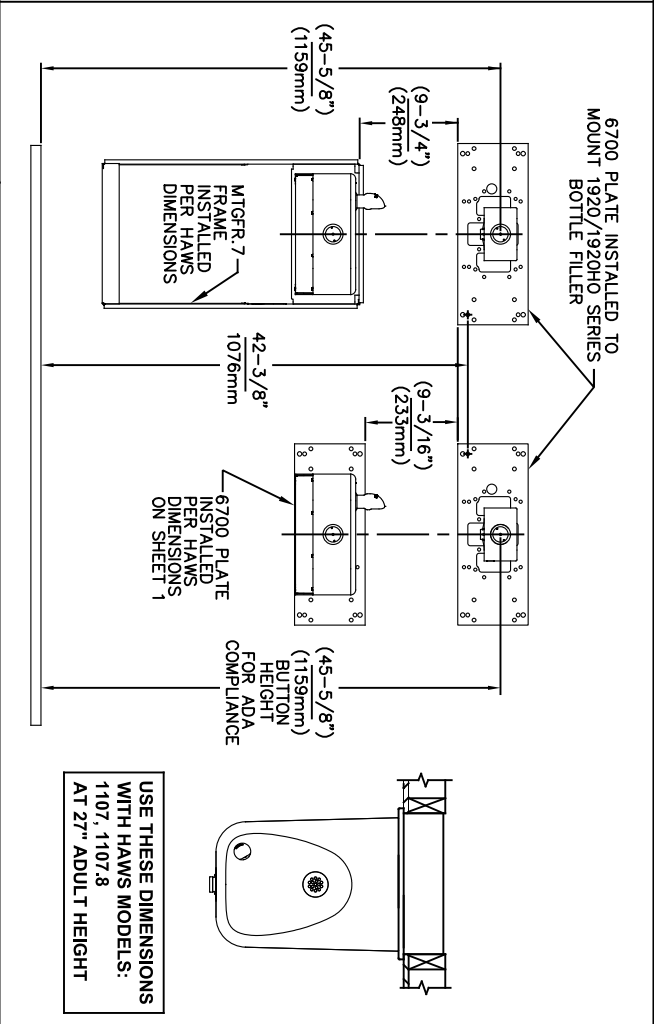
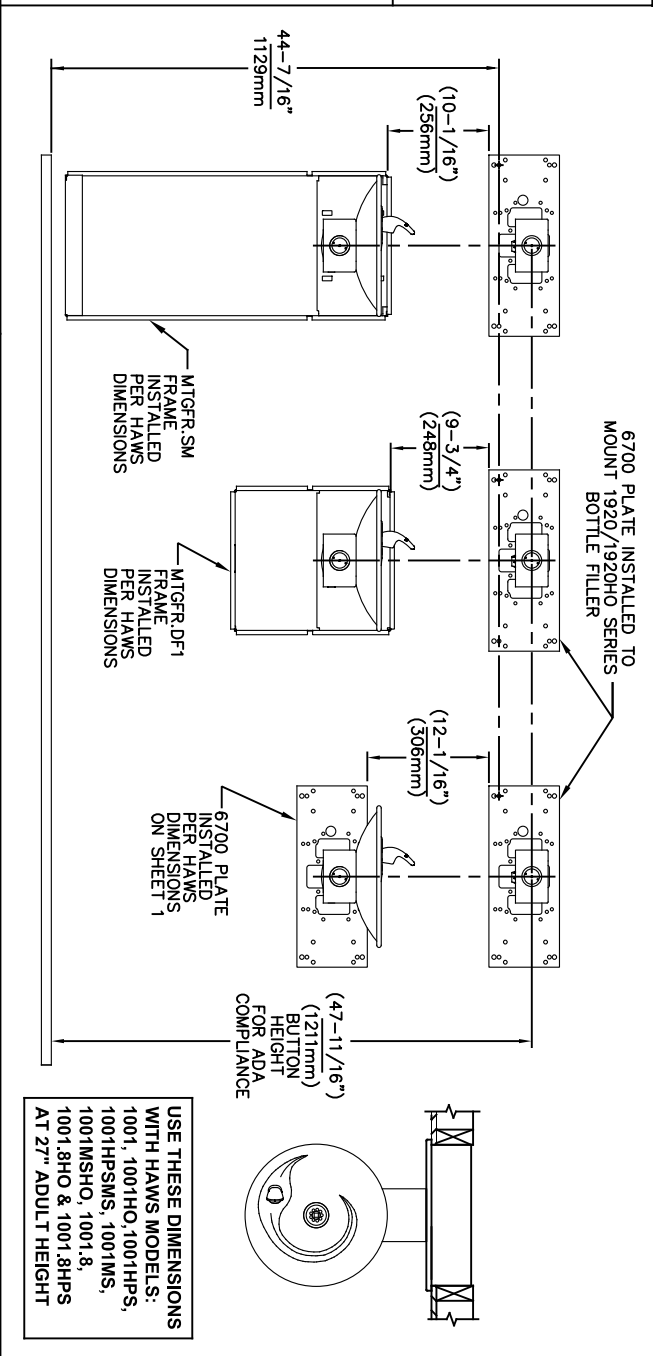
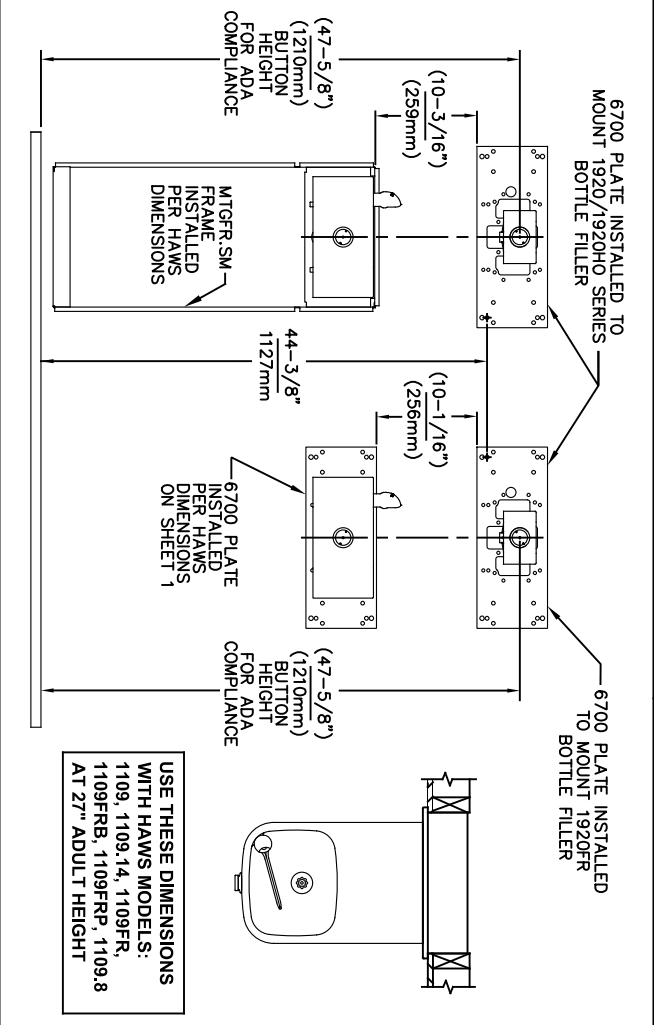
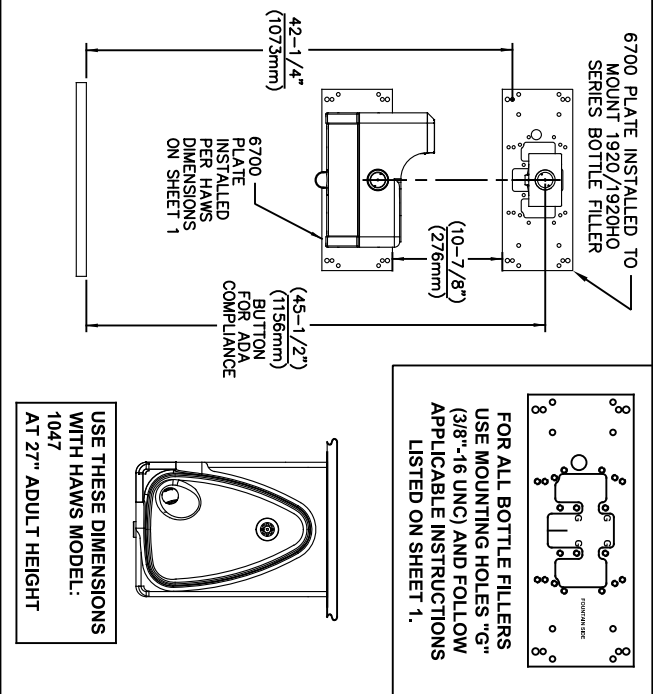
DRAWING TYPE: INSTALLATION

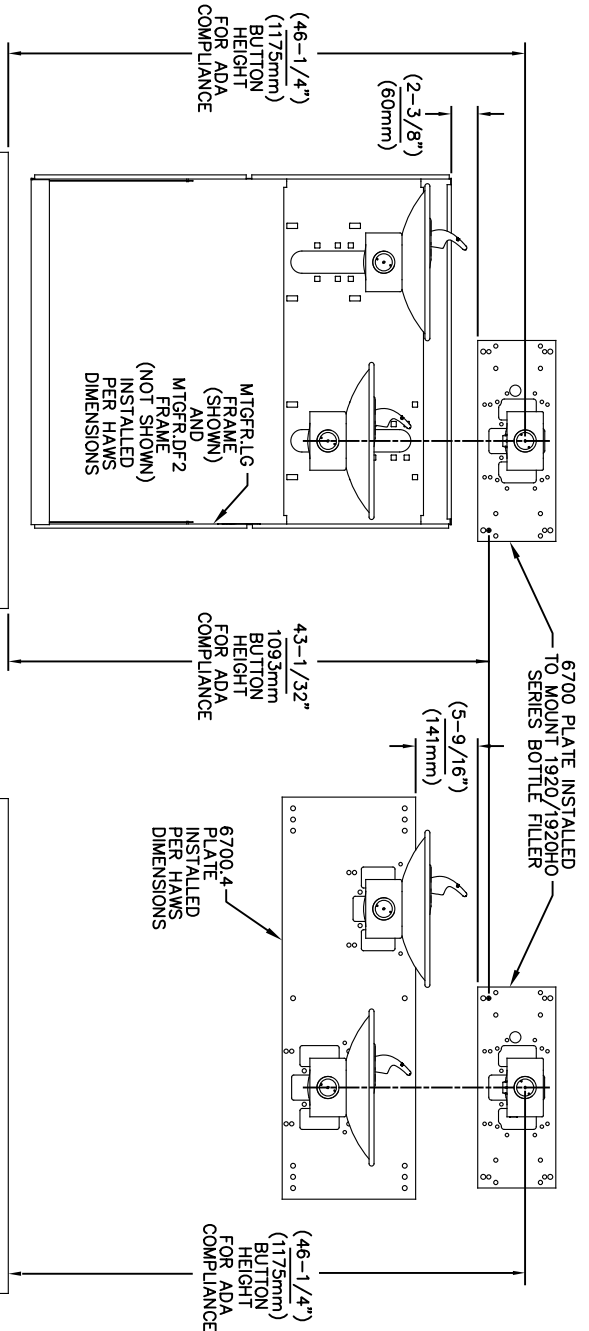
SIZE: A

SHEET: 2 OF 6

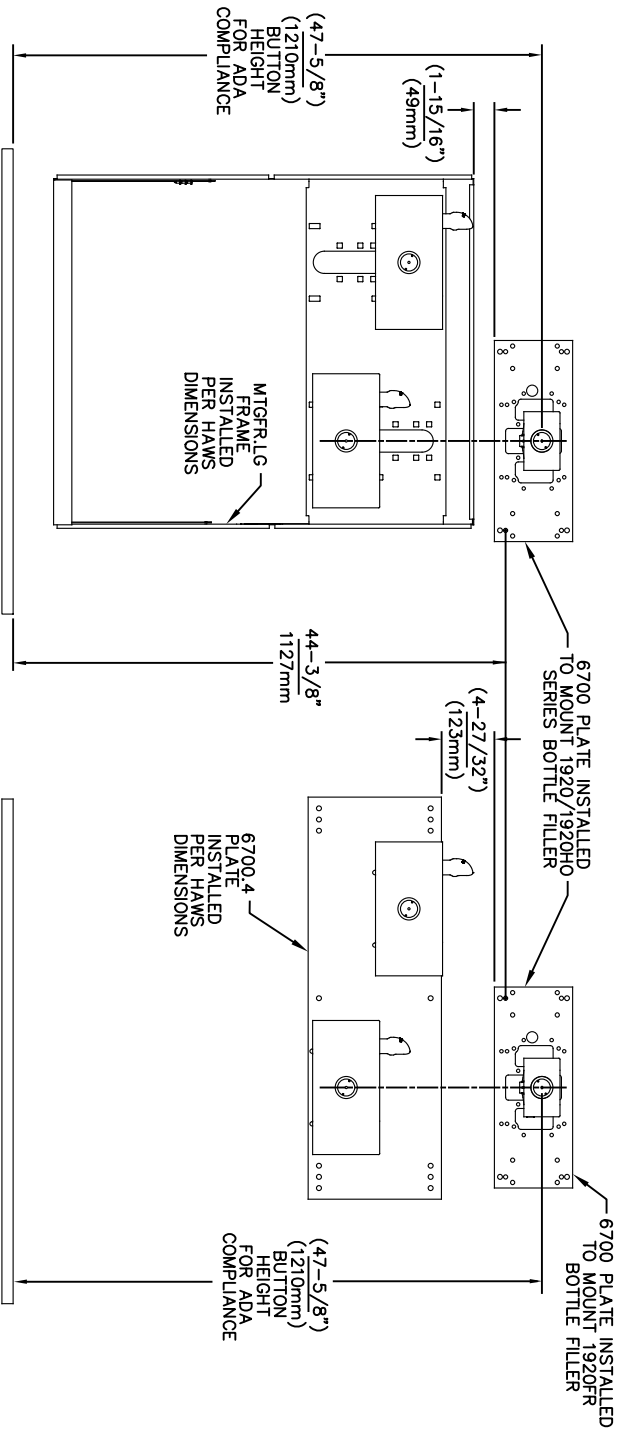
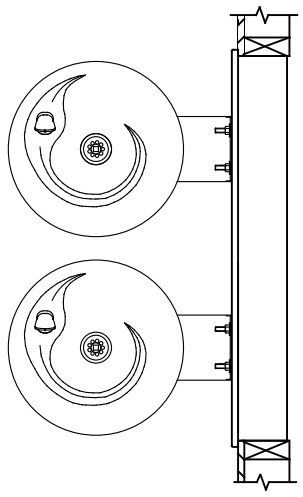
1455 KLEPPE LANE  
SPARKS, NEVADA 89431  
(775) 359-4712 FAX (775) 359-7424  
E-MAIL: HAWS@HAWS.CO.COM  
WEBSITE: WWW.HAWS.CO.COM

PART NUMBER  
0002080016

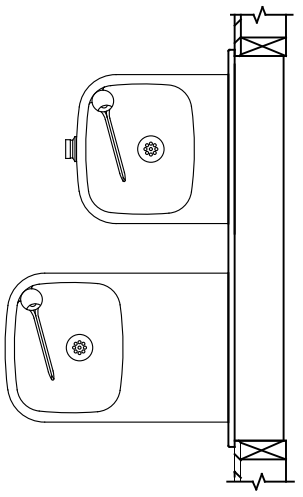




**USE THESE MOUNTING DIMENSIONS IF INSTALLING OVER HAWS FOUNTAIN**  
MODEL: 1011, 1011HO, 1011HO2, 1011HPS, 1011HPSHO, 1011HPSHO2, 1011HPSMS, 1011HMS, 1011MSHO, 1011MSHO2, 1011.8, 1011.8HO, 1011.8HO2 & 1011.8HPSM AT 27" ADULT HEIGHT  
INSTALL THE 6700 ABOVE THE FOUNTAIN MOUNTING PLATE OR FRAME AT THE DIMENSION SHOWN FOR CORRECT BACKPANEL SPACING  
BACK PANELS FOR BOTTLE FILLERS (NOT SUPPLIED - OPTIONAL) ARE NOT SHOWN FOR CLARITY.




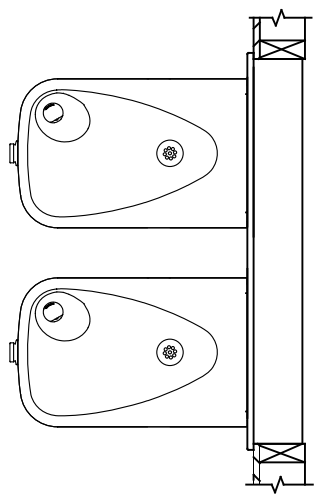
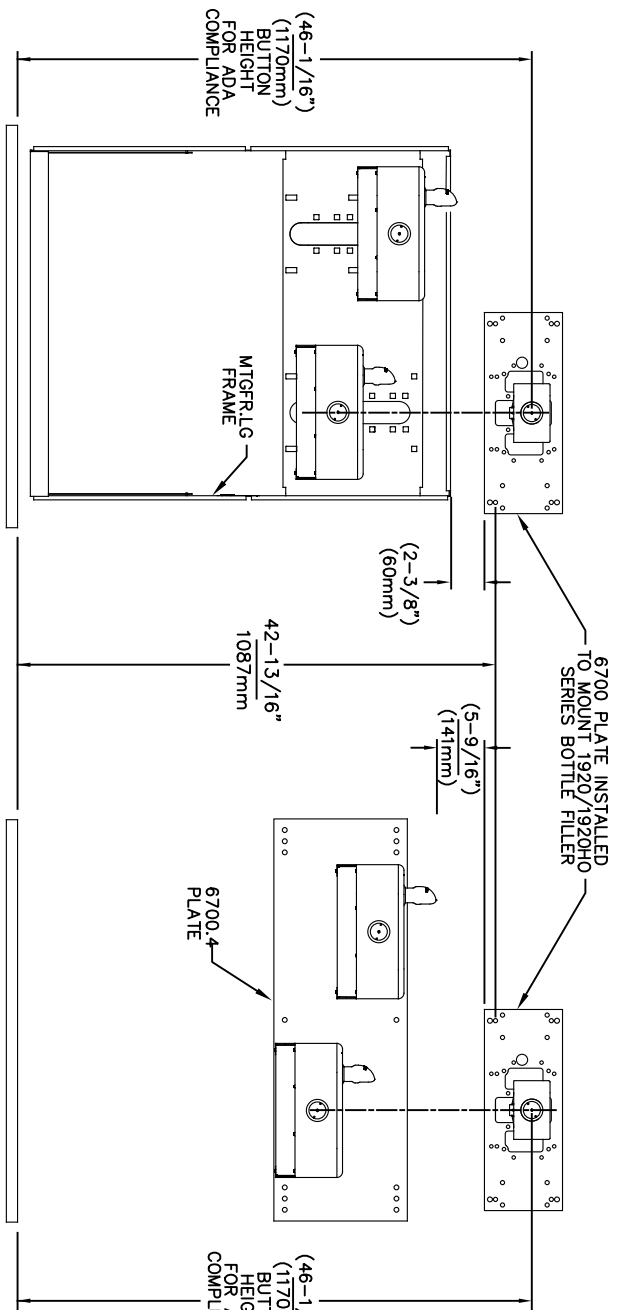
**USE THESE MOUNTING DIMENSIONS IF INSTALLING OVER HAWS FOUNTAIN**  
MODEL: 1119, 1119.14, 1119.14HO, 1119.14HO2, 1119FR, 1119FRB, 1119FRP, 1119HO, 1119HO2 & 1119.8 AT 27" ADULT HEIGHT  
INSTALL THE 6700 ABOVE THE FOUNTAIN MOUNTING PLATE OR FRAME AT THE DIMENSION SHOWN FOR CORRECT BACKPANEL SPACING  
BACK PANELS FOR BOTTLE FILLERS (NOT SUPPLIED - OPTIONAL) ARE NOT SHOWN FOR CLARITY.



- NOTES:
1. WHEN INSTALLING THIS UNIT, LOCAL, STATE OR FEDERAL CODES SHOULD BE ADHERED TO.
  2. BACK PANELS (OPTIONAL) NOT SHOWN FOR CLARITY.

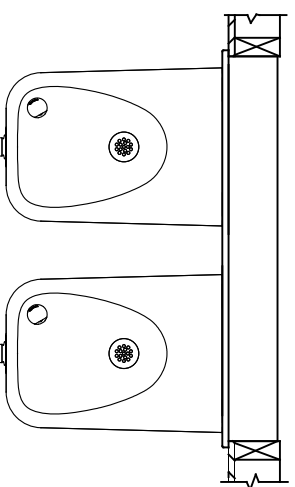
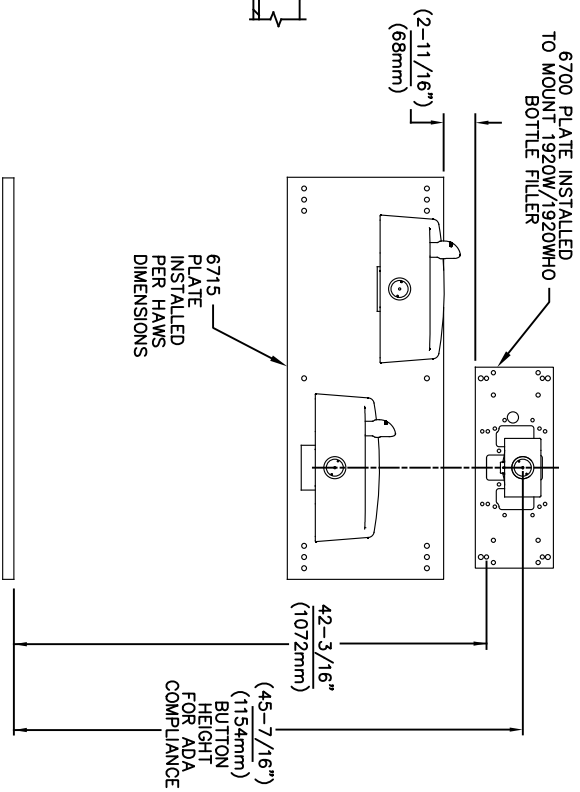
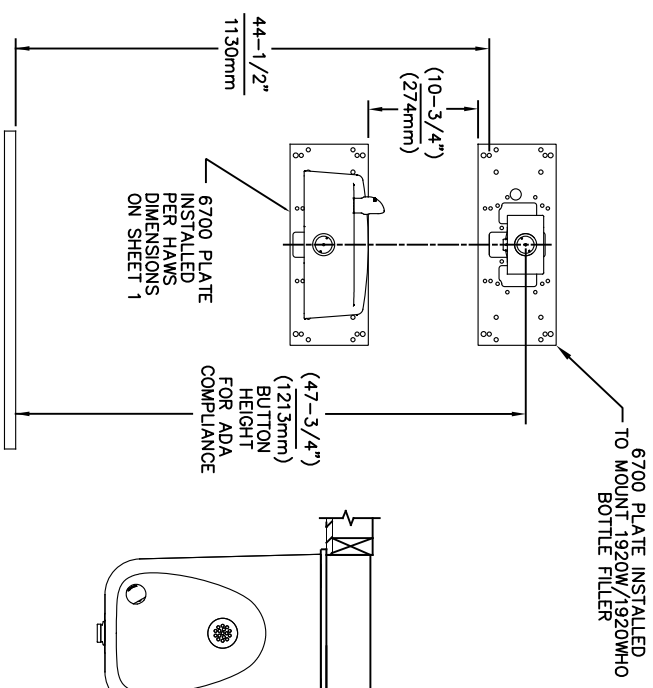
6700 MOUNTING PLATE  
FOR USE WITH BOTTLE FILLER  
(SEE SHEET 1 FOR USE WITH  
DRINKING FOUNTAINS)

		1456 KLEPPE LANE SPARKS, NEVADA 89431 (775) 359-4712 FAX (775) 359-7424 E-MAIL: HAWS@HAWS.CO.COM WEBSITE: WWW.HAWS.CO.COM	
ECN NO. REVISED PERBY:	MODEL(S)	6700	
5550 ECN: 6148 JG	DATE: 09/14/20 JG	PART NUMBER 0002080016	
DRAWN: FV	DATE: 02/11/25	REVISION: 26	
APPROVED: FV	SCALE: 1:13	DRAWING TYPE: INSTALLATION	
SIZE: A		SHEET 4 OF 6	



USE THESE MOUNTING DIMENSIONS IF  
INSTALLING OVER HAWS FOUNTAIN  
MODEL: 1117, 1117.8  
AT 27" ADULT HEIGHT

INSTALL THE 6700 ABOVE THE  
FOUNTAIN MOUNTING PLATE OR  
FRAME AT THE DIMENSION SHOWN  
FOR CORRECT BACKPANEL SPACING  
BACK PANELS FOR BOTTLE FILLERS  
(NOT SUPPLIED - OPTIONAL) ARE NOT  
SHOWN FOR CLARITY.




USE THESE MOUNTING DIMENSIONS IF  
INSTALLING OVER HAWS FOUNTAIN  
MODEL: 1311, 1501  
AT 27" ADULT HEIGHT

INSTALL THE 6700 ABOVE THE  
FOUNTAIN MOUNTING PLATE AT  
THE DIMENSION SHOWN FOR CORRECT  
BACKPANEL SPACING (IF APPLICABLE).  
BACK PANEL FOR BOTTLE FILLER  
(NOT SUPPLIED - OPTIONAL) IS NOT  
SHOWN FOR CLARITY.

- NOTES:
1. WHEN INSTALLING THIS UNIT, LOCAL, STATE OR FEDERAL CODES SHOULD BE ADHERED TO.
  2. BACK PANELS (OPTIONAL) NOT SHOWN FOR CLARITY.

6700 MOUNTING PLATE  
FOR USE WITH BOTTLE FILLER  
(SEE SHEET 1 FOR USE WITH  
DRINKING FOUNTAINS)



**Haws®**  
Since 1906

1456 KLEPPE LANE  
SPARKS, NEVADA 89431  
(775) 359-4712 FAX (775) 359-7424  
E-MAIL: HAWS@HAWS.CO.COM  
WEBSITE: WWW.HAWS.CO.COM

ECN NO. 5550  
DRAWN: FV  
APPROVED: FV

REVISION PERBY: JG  
DATE: 05/14/20  
CHKD: JG

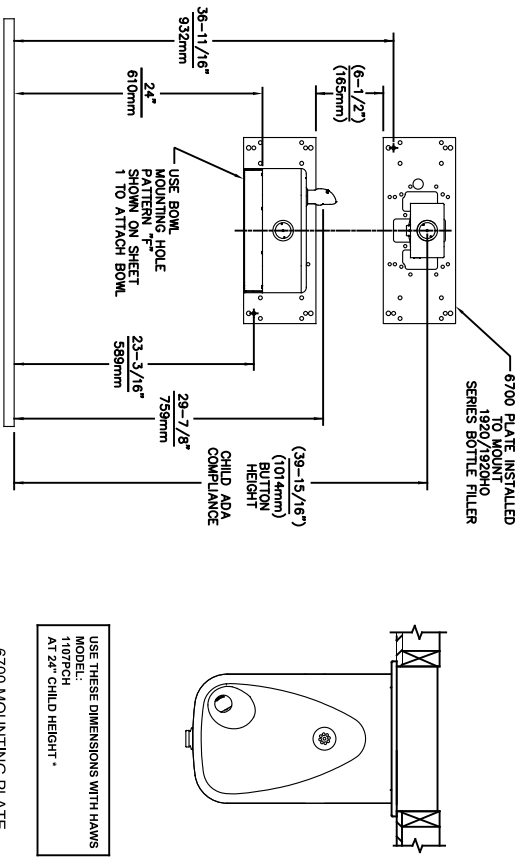
MODEL(S) 6700

PART NUMBER 0002080016

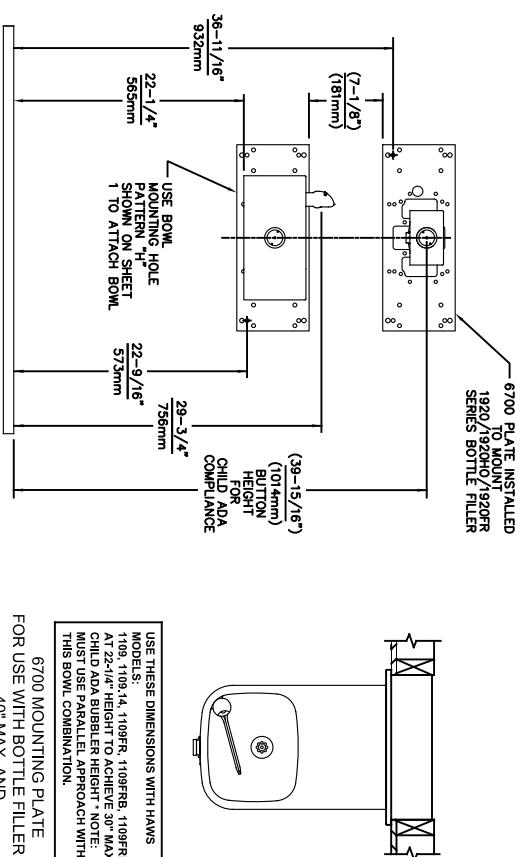
REVISION 26

SCALE: 1:13  
DRAWING TYPE: INSTALLATION  
SHEET 5 OF 6

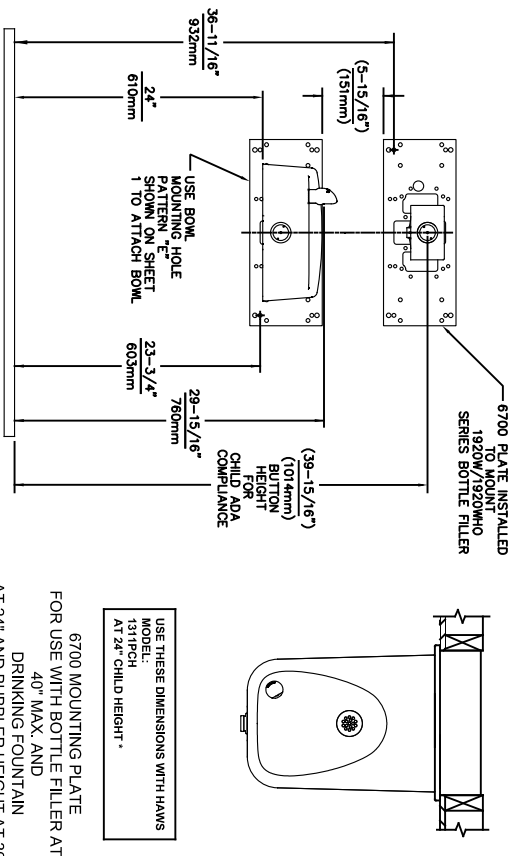




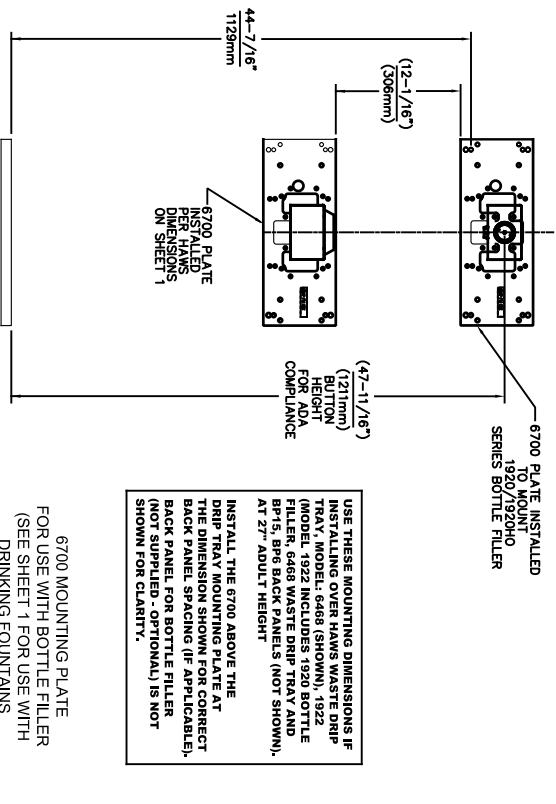
6700 MOUNTING PLATE  
FOR USE WITH BOTTLE FILLER AT  
40\" MAX. AND  
DRINKING FOUNTAIN  
AT 24\" AND BUBBLER HEIGHT AT 30\"  
MAX. FOR CHILD ADA HEIGHT  
(SEE SHEETS 1 & 2 FOR USE WITH  
DRINKING FOUNTAIN AT 27\" ADULT  
HEIGHT DIMENSIONS)



6700 MOUNTING PLATE  
FOR USE WITH BOTTLE FILLER AT  
40\" MAX. AND  
DRINKING FOUNTAIN  
BUBBLER HEIGHT AT 30\" MAX.  
FOR CHILD ADA HEIGHT  
MUST USE PARALLEL APPROACH  
WITH THIS BOWL COMBINATION  
(SEE SHEETS 1 & 2 FOR USE WITH  
DRINKING FOUNTAIN AT 27\" ADULT  
HEIGHT DIMENSIONS)



6700 MOUNTING PLATE  
FOR USE WITH BOTTLE FILLER AT  
40\" MAX. AND  
DRINKING FOUNTAIN  
AT 24\" AND BUBBLER HEIGHT AT 30\"  
MAX. FOR CHILD ADA HEIGHT  
(SEE SHEETS 1 & 4 FOR USE WITH  
DRINKING FOUNTAIN AT 27\" ADULT  
HEIGHT DIMENSIONS)



6700 MOUNTING PLATE  
FOR USE WITH BOTTLE FILLER  
(SEE SHEET 1 FOR USE WITH  
DRINKING FOUNTAINS  
AND WASTE DRIP TRAY)

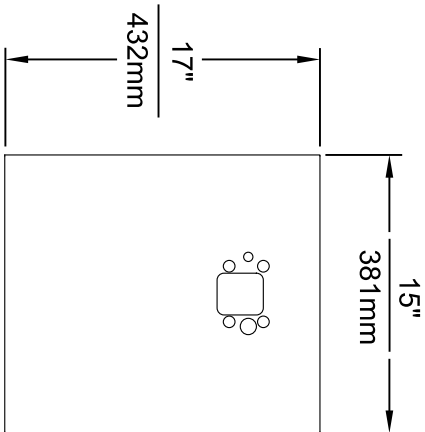


1456 KLEPPE LANE  
SPARKS, NEVADA 89431  
(775) 359-4712 FAX (775) 359-7424  
E-MAIL: HAWS@HAWS.CO.COM  
WEBSITE: WWW.HAWS.CO.COM

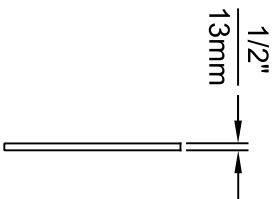
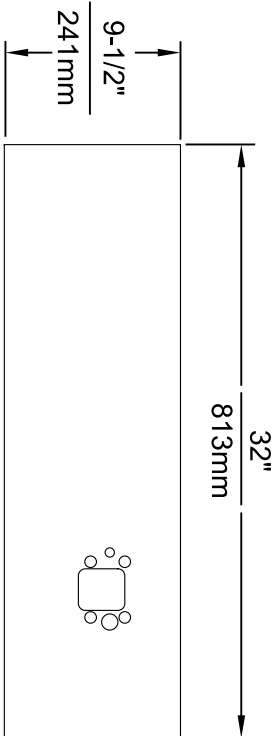
ECN NO. REVISED PERBY:	MODEL(S)
5893 1 ECN: 6148 1 JG	6700
DRAWN: DATE: CHKD:	
FV 07/26/23 JG	
APPROVED: DATE:	
FV 02/11/25	
SCALE: 1:13	DRAWING TYPE:
INSTALLATION	SHEET 6 OF 6

PART NUMBER  
0002080016

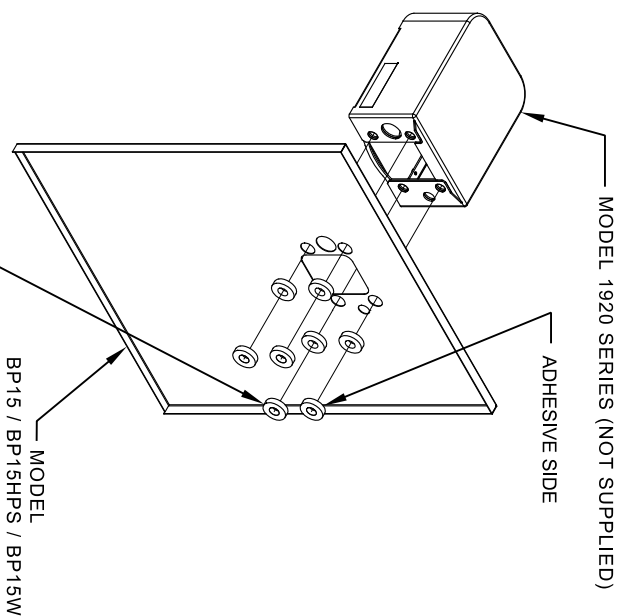
REVISION:  
26



**MODEL BP15 / BP15HPS / BP15W**



**MODEL BP32 / BP32HPS / BP32W**




8 SPACERS (2 PER MOUNTING  
BOLT IF THE MOUNTING PLATE (MODEL  
6700 - NOT SUPPLIED) IS INSTALLED  
BEHIND THE FINISHED WALL. USE 1  
SPACER PER BOLT FOR RETROFITS  
WHERE THE MOUNTING PLATE (MODEL  
6700R - NOT SUPPLIED) IS INSTALLED  
IN FRONT OF THE FINISHED WALL)

## INSTALLATION OVER SINGLE FOUNTAIN

SHOWN FROM REAR

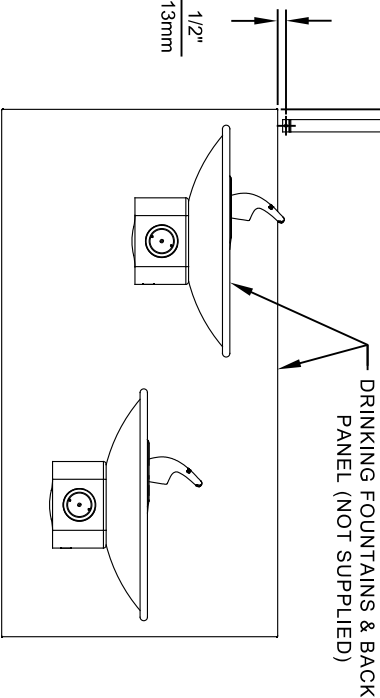
(SEE SHEET 3 OF 3 FOR INSTALLATION OF SPACERS  
ON COMBINATION BOTTLE FILLER AND FOUNTAIN  
BACK PANELS FOR CHILD HEIGHT APPLICATIONS -  
MODELS BP15C & BP15WC)

- NOTES:
1. WHEN INSTALLING THIS UNIT, LOCAL, STATE OR FEDERAL  
CODES SHOULD BE ADHERED TO.
  2. BOTTLE FILLER SHOWN FOR REFERENCE ONLY (NOT SUPPLIED).

		1455 KLEPPE LANE SPARKS, NEVADA 89431 (775) 359-4712 FAX (775) 359-7424 E-MAIL: HAWS@HAWS.CO.COM WEBSITE: WWW.HAWS.CO.COM	
EQU. NO. REVISED PER BY: J.G.		MODEL(S)	
DRAWN: J.G.		DRAWING, BACK PANEL, SPACER INSTALLATION	
APPROVED: J.G.		FOR BP15 SERIES & BP32 SERIES, BOTTLE FILLER	
DATE: 02/11/25		SCALE: 1" = 1"	
FV		INSTALLATION	
		SIZE: A	
		SHEET 1 OF 3	
		PART NUMBER	
		0510000493	
		REVISION	
		6	

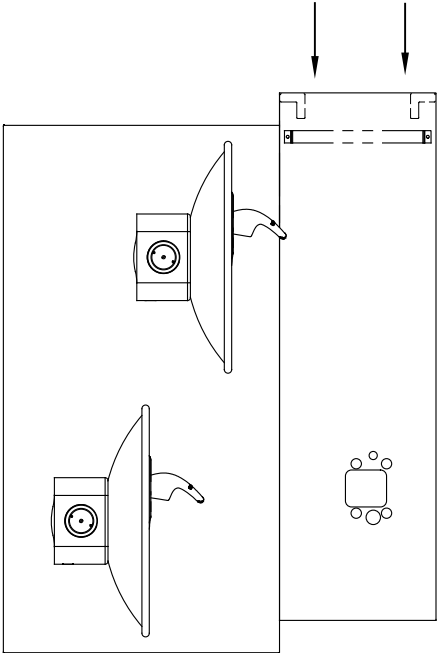
**STEP 1**

ATTACH SUPPLIED BRACKET TO WALL USING APPROPRIATE FASTENERS. BRACKET IS INSTALLED OVER THE HIGH-SIDE OF THE DRINKING FOUNTAIN



**STEP 2**

PLACE THE BACKPLATE AGAINST THE WALL AND SLIDE SIDEWAYS SO THE TABS CATCH UNDER THE BRACKET.

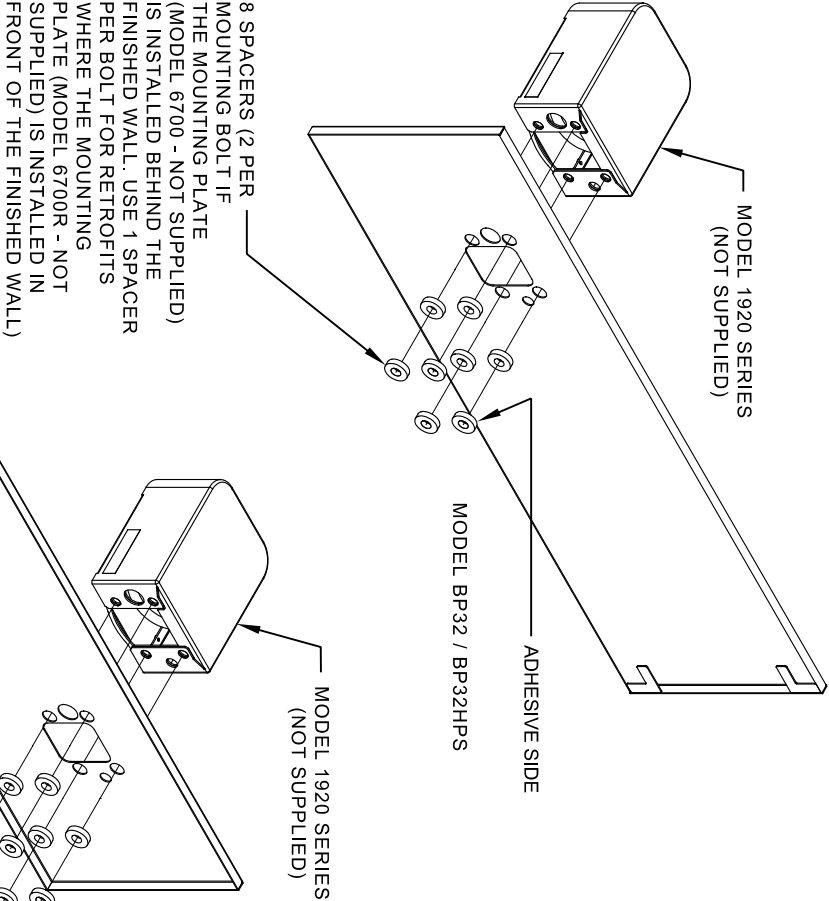


**STEP 3**

INSTALL THE BOTTLE FILLER (NOT SUPPLIED) PER THE INSTRUCTIONS SUPPLIED WITH THE UNIT.

**NOTES:**


1. WHEN INSTALLING THIS UNIT, LOCAL, STATE OR FEDERAL CODES SHOULD BE ADHERED TO.
2. BOTTLE FILLERS, DRINKING FOUNTAINS & DRINKING FOUNTAIN BACK PANELS SHOWN FOR REFERENCE ONLY (NOT SUPPLIED).



**INSTALLATION OVER DOUBLE FOUNTAIN**

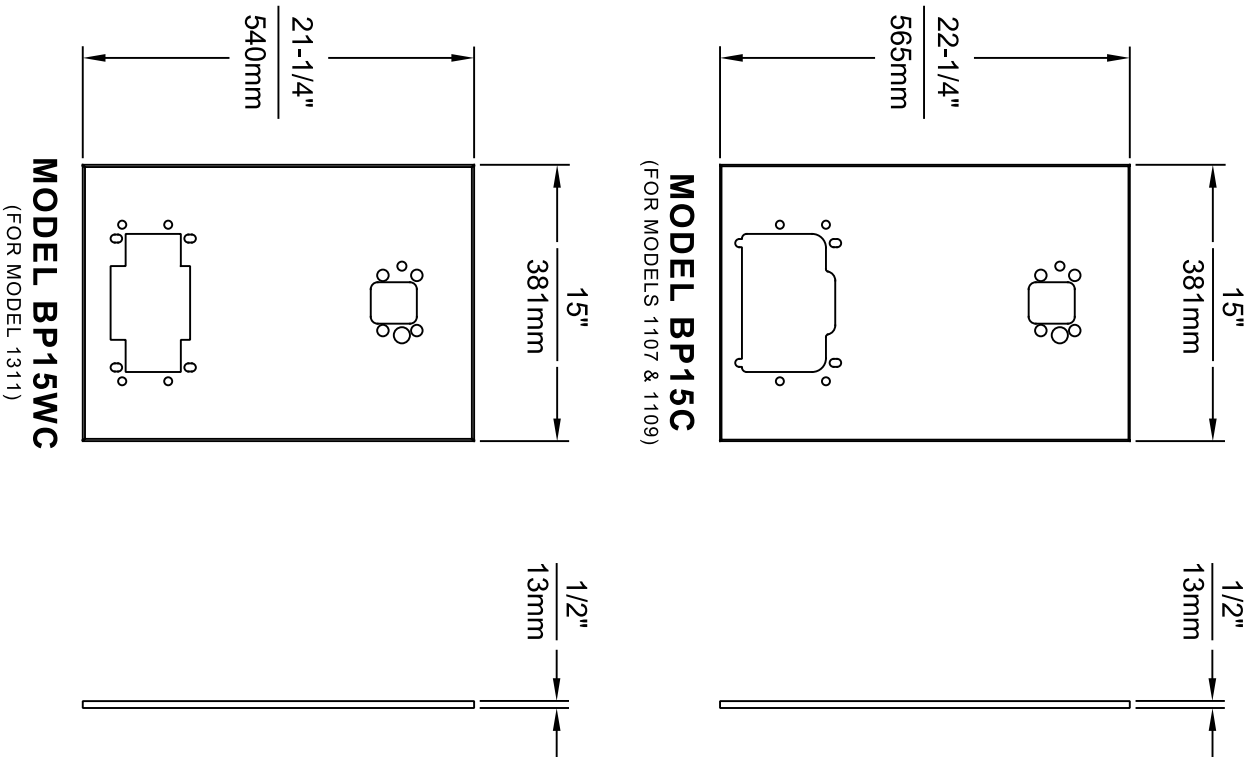
SHOWN FROM REAR

EQN. NO. REQUESTED PER BY: <b>EQN. 6146 J.G.</b>		MODEL(S) <b>MODEL(S)</b>		PART NUMBER <b>0510000493</b>	
DRAWN BY: <b>J.G.</b>	CHNG. BY: <b>J.G.</b>	DRAWING, BACK PANEL, SPACER INSTALLATION		REVISION <b>6</b>	
DATE: <b>02/11/25</b>	DATE: <b>02/11/25</b>	FOR BP15 SERIES & BP32 SERIES, BOTTLE FILLER		SHEET <b>2</b> OF <b>3</b>	
APPROVED: <b>F.V.</b>	SCALE: <b>1:1</b>	DRAWING TYPE: <b>INSTALLATION</b>		SIZE: <b>A</b>	

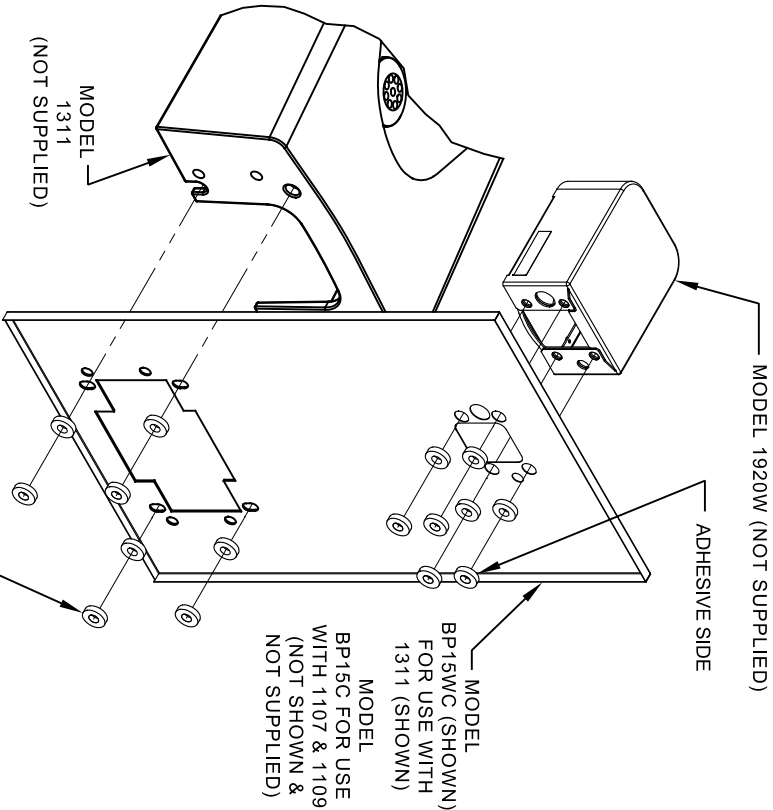


**Haws**  
Since 1906

1455 KLEPPE LANE  
SPARKS, NEVADA 89431  
(775) 359-4712 FAX (775) 359-7424  
E-MAIL: HAWS@HAWS.CO.COM  
WEBSITE: WWW.HAWS.CO.COM



- NOTES:
1. WHEN INSTALLING THIS UNIT, LOCAL, STATE OR FEDERAL CODES SHOULD BE ADHERED TO.
  2. BOTTLE FILLER AND DRINKING FOUNTAIN SHOWN FOR REFERENCE ONLY (NOT SUPPLIED).




16 SPACERS (2 PER MOUNTING BOLT IF BOTH MOUNTING PLATES (MODEL 6700 - NOT SUPPLIED) ARE INSTALLED BEHIND THE FINISHED WALL. USE 1 SPACER PER BOLT FOR RETROFITS WHERE BOTH MOUNTING PLATES (MODEL 6700R - NOT SUPPLIED) ARE INSTALLED IN FRONT OF THE FINISHED WALL)

## ONE PIECE INSTALLATION ON SINGLE FOUNTAIN

SHOWN FROM REAR

(MODEL BP15C & BP15WC ARE COMBINATION BOTTLE FILLER AND FOUNTAIN BACK PANELS USED FOR CHILD HEIGHT APPLICATIONS ONLY ON MODELS 1107, 1109 & 1311 - BOTTLE FILLER & DRINKING FOUNTAIN NOT SUPPLIED)

		<b>1455 KLEPPE LANE</b>	
		<b>SPARKS, NEVADA 89431</b>	
		<b>(775) 359-4712 FAX (775) 359-7424</b>	
		<b>E-MAIL: HAWS@HAWS.CO.COM</b>	
		<b>WEBSITE: WWW.HAWS.CO.COM</b>	
<b>MODEL(S)</b>		<b>PART NUMBER</b>	
<b>DRAWING, BACK PANEL, SPACER INSTALLATION</b>		<b>0510000493</b>	
<b>FOR BP15 SERIES &amp; BP32 SERIES, BOTTLE FILLER</b>		<b>REVISION</b>	
<b>SCALE: 11</b>		<b>6</b>	
<b>INSTALLATION</b>		<b>SHEET 3 OF 3</b>	