

FEATURES & BENEFITS

CONSTRUCTION

Rugged ADA accessible 18 gauge Type 304 polished stainless steel swirl design bowls, 14 gauge Type 304 polished stainless steel brackets and bottle filler, and vandal-resistant bottom plates provide a long lasting unit with added peace of mind.

BOTTLE FILLER

14-gauge Type 304 stainless steel bottle filler housing with touchless operation and 1 gpm (3.78 L) laminar flow with 30-second obstruction time-out.

VANDAL RESISTANT

The bubbler heads, push button, round bowls, drain strainers and bottom plates are locked in place, discouraging unwanted vandal tampering, and 30-second obstruction time-out to reduce tampering of sensor.

BUBBLER HEADS

Polished chrome-plated brass bubbler heads with integral laminar flow prevents splashing while providing a superior flow pattern. The integral 11/16" dia. basin shank and stainless anti-rotation roll pin for vandal resistance strength. Shielded, angled stream opening provides a steady source of drinking water at .45 gpm.

FOUNTAIN VALVES

Bottle filler incorporates a touchless sensor operated stainless steel solenoid valve controlled by a transformer, and a pushbutton activated valve which offers the only all stainless-steel valve body that is machined out of solid bar stock and is fully serviceable through the front of the push button assembly offering access to the water control cartridge and integral water supply strainer on the fountain.

MOUNTING

3/16" (.47 cm) thick steel mounting plate is larger, thicker and stronger than any other plate in the industry, and shall include the all-thread studs, nuts, and washers which allows for easy installation to a framed wall. (P-trap and stop require rear access)

OPTIONS

- Water Filter: Model 6480 filter kit with 3000 gallon carbon block filter, filter head, and mounting bracket.
- Support Frame: Model 6800 In-wall floor mounted fixture support legs, welded steel 4-bolt floor flanges, and supplied with 'U' bolts and hardware.
- Mounting Plate: Model 6700R, on-wall mounting plate for model 1920.
- Mounting Plate: Model 6700, in-wall mounting plate for model 1920.

For more information, visit www.hawscow.com or call (888) 640-4297.



REQUIRED MODELS

1011HPS / 6700.4 / 1920HPSHO / BP32HPS

Order these items to make up Model 1011HPS-1920HPSHO fountain with stainless steel back panel, bottle filler with stainless steel back plate, and fountain mounting plate shown above.

FOR INDOOR USE ONLY

SPECIFICATIONS

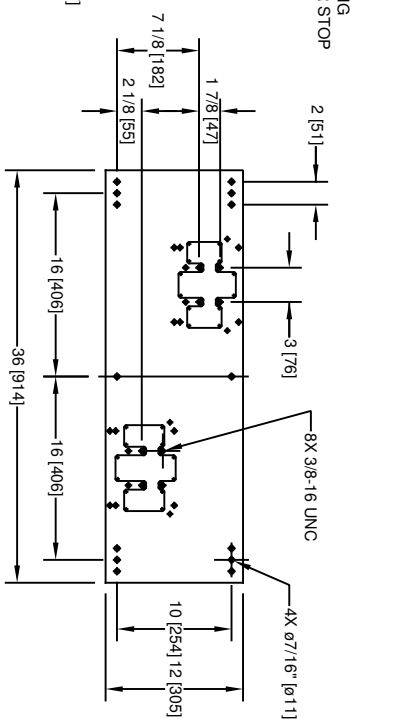
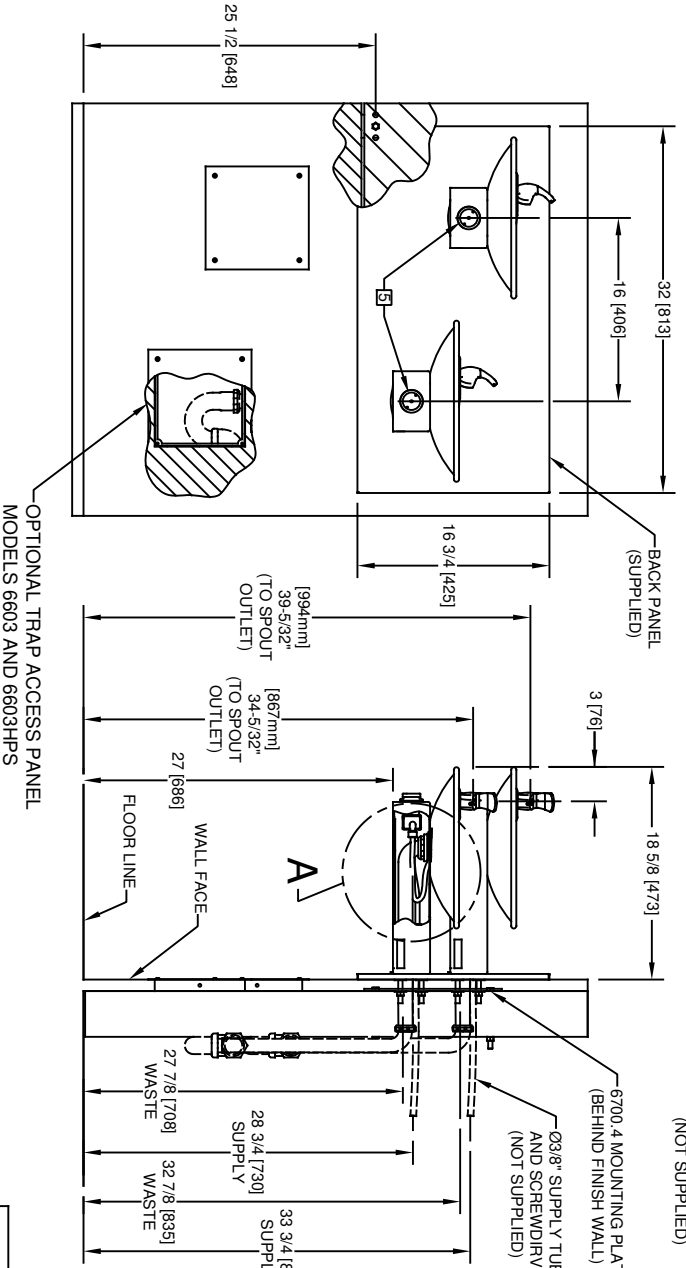
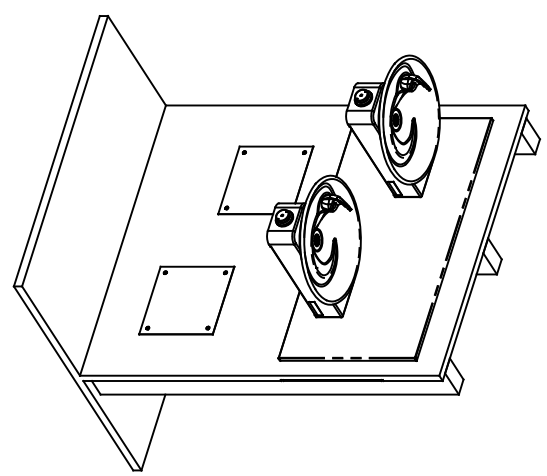
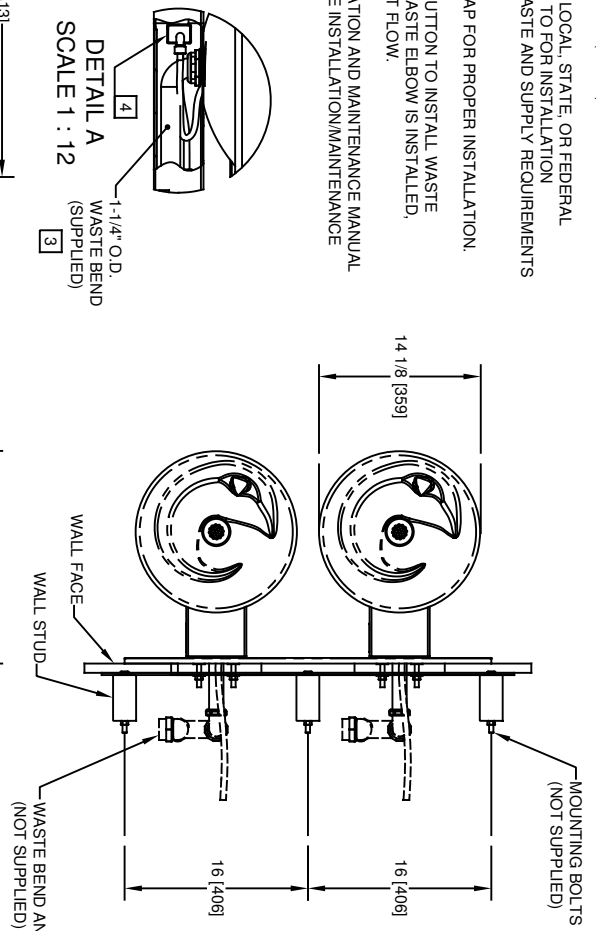
Model 1011HPS-1920HPSHO wall mounted ADA vandal-resistant drinking fountain and motion activated bottle filler shall include dual 18 gauge Type 304 high-polished stainless steel basins with integral swirl design, 14 gauge Type 304 high-polished stainless steel wall brackets and bottle filler bracket, 100% lead-free waterways, touchless sensor operated solenoid valve with 30-second obstruction time-out on the bottle filler, and vandal-resistant push-button operated stainless-steel valves with front-accessible cartridge and flow adjustment on the fountain, polished chrome-plated brass vandal-resistant bubbler heads with integral laminar anti-squirt flow, 1 gpm (3.78 L) laminar flow bottle filler, chrome-plated brass vandal-resistant waste strainers, vandal-resistant bottom plates, polished stainless steel back panels, high and low fountain mounting levels, and 1-1/4" O.D. (3.2 cm) waste pipes. (P-trap and stop require rear access) Manufactured to be lead-free by all known definitions including NSF/ ANSI/CAN 61-Section 9, NSF/ANSI/CAN 372, California Proposition 65, and the Federal Safe Drinking Water Act. Product is compliant to California Health and Safety Code 116875 (AB 1953-2006), and 116876 (AB 100) "NSF/ANSI/CAN 61: Q ≤ 1".

The bottle filler requires a mounting plate; either the Haws model 6700 in-wall or the 6700R on-wall support plate.



NOTES:

1. HOLD ROUGH-IN DIMENSIONS ±1/8" (3.2mm).
2. WHEN INSTALLING THIS UNIT, LOCAL, STATE, OR FEDERAL CODES SHOULD BE ADHERED TO FOR INSTALLATION DIMENSIONS (LOCATIONS), WASTE AND SUPPLY REQUIREMENTS OTHER THAN SHOWN.
3. INSTALLER MUST PROVIDE TRAP FOR PROPER INSTALLATION.
4. REMOVE VALVE FROM PUSH BUTTON TO INSTALL WASTE ELBOW ONTO BOWL. AFTER WASTE ELBOW IS INSTALLED, REINSTALL VALVE AND ADJUST FLOW.
5. REFER TO 5874 SERIES OPERATION AND MAINTENANCE MANUAL FOR PUSH BUTTON AND VALVE INSTALLATION/MAINTENANCE INSTRUCTIONS.



**6700.4 MOUNTING PLATE
MUST BE INSTALLED BEFORE FINISH WORK.
THIS PLATE IS REQUIRED - SOLD SEPARATELY.**

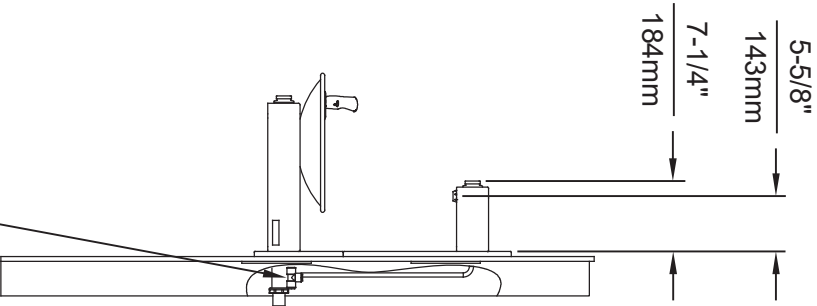
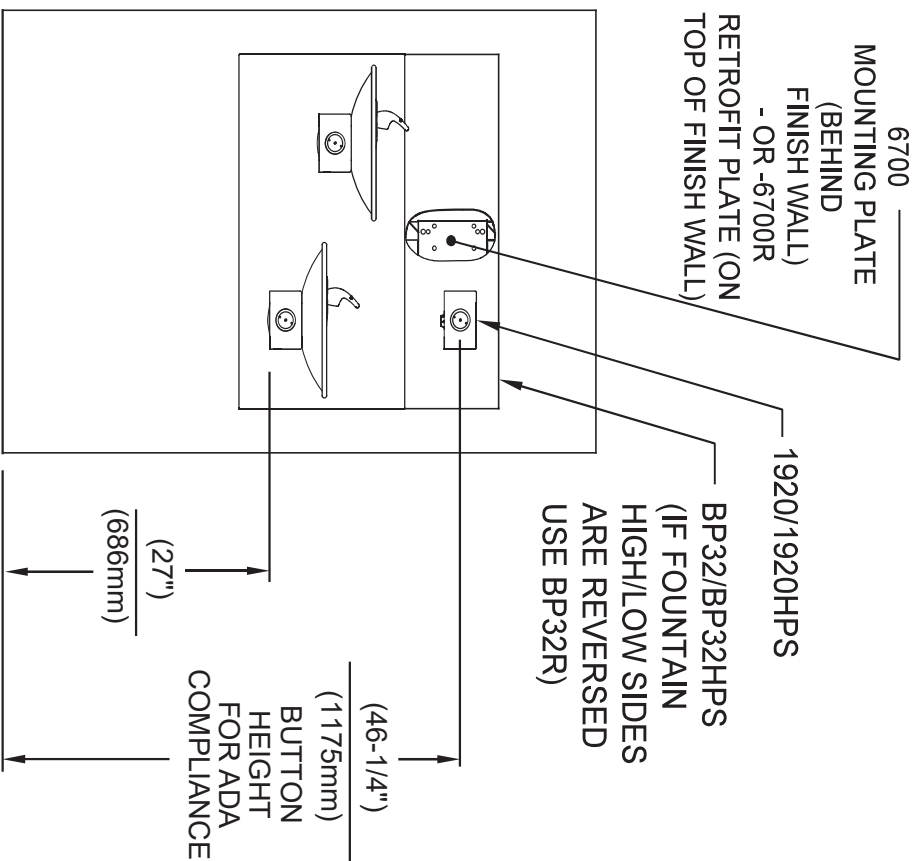
1456 KLEPPE LANE
SPARKS, NEVADA 89431
(775) 359-4712 FAX (775) 359-7424
E-MAIL: HAWS@HAWS.CO.COM
WEBSITE: WWW.HAWS.CO.COM

MODEL(S)
1011/1011HPS

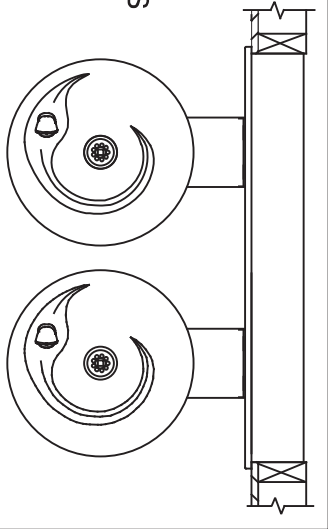
PART NUMBER
0002076520.D

REVISION
21

ECON NO. REVISED PER BY:	ECON. 5530	ECON. 5530	ECON. 5530
DATE:	DATE:	DATE:	DATE:
03/28/20	05/98	05/98	05/98
APPROVED:	CHKD:	DP:	DP:
NE	RM	DP	DP
SCALE:	1:1	DRAWING TYPE:	INSTALLATION
SIZE:	A	SHEET:	1 OF 1

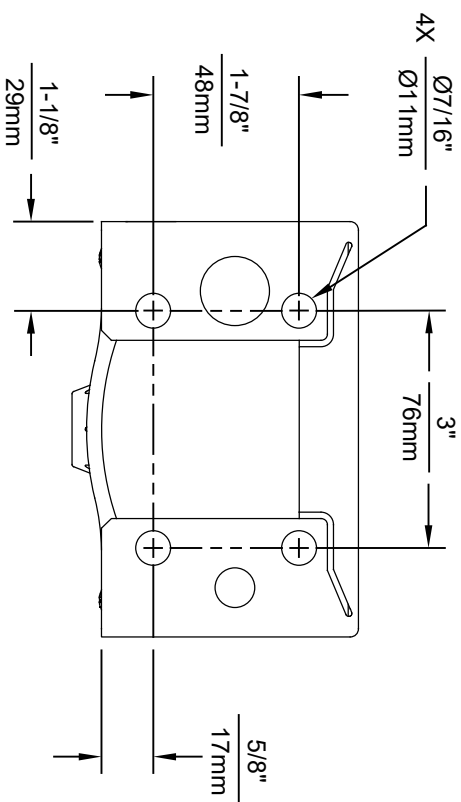
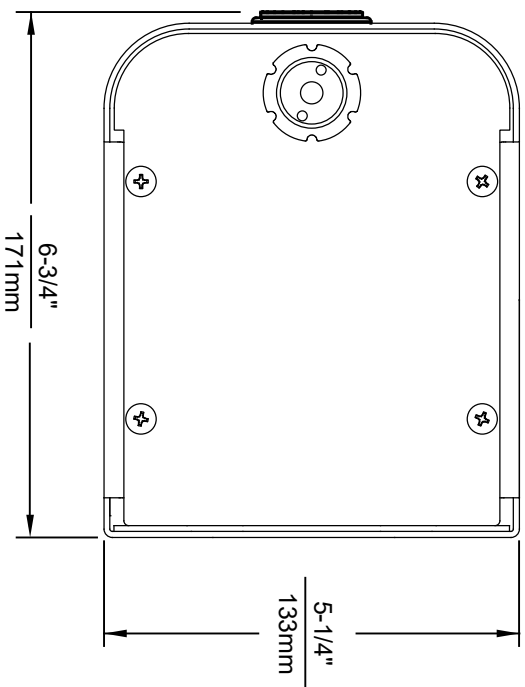
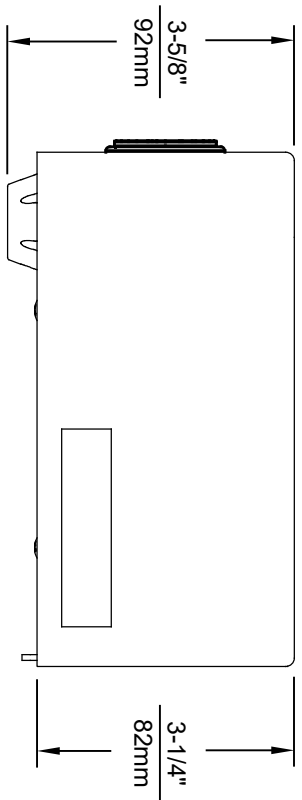


- * IF YOUR FOUNTAIN IS THIS STYLE USE THESE DIMENSIONS
- 1. SEE SEPARATE INSTALLATION DRAWINGS FOR MOUNTING PLATES AND BACKPANELS
- 2. WHEN INSTALLING THIS UNIT, LOCAL, STATE OR FEDERAL CODES SHOULD BE ADHERED TO FOR INSTALLATION LOCATIONS, WASTE & SUPPLY REQUIREMENTS OTHER THAN SHOWN.

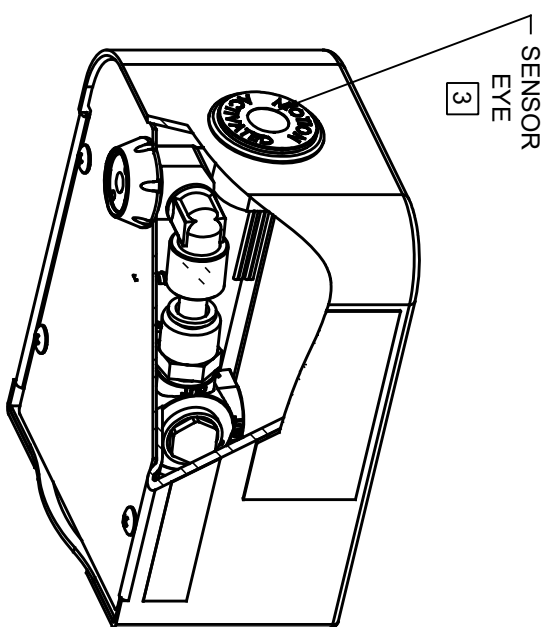


3/8" O.D. SUPPLY TUBING AND 3/8" O.D. PUSH-IN TEE SUPPLIED. (CONNECT TO FOUNTAIN SUPPLY LINE)

		Haws	
1455 KLEPPE LANE SPARKS, NEVADA 89431 (775) 359-4712 FAX (775) 359-7424 E-MAIL: HAWS@HAWS.CO.COM WEBSITE: WWW.HAWS.CO.COM		MODEL(S) 1011-1920	
EQ. NO. REVISED PER BY	DATE	SCALE: N/A	DRAWING TYPE: INSTALLATION
5081 EQ. 5550	05/14/20		
DRAWN: MMS	DATE	SCALE: N/A	DRAWING TYPE: INSTALLATION
10/15/17	05/14/20		
APPROVED: F.V.	DATE	SCALE: N/A	DRAWING TYPE: INSTALLATION
PART NUMBER	REVISION	SIZE: A	SHEET 2 OF 6
	6		



1920HO SERIES MOUNTING HOLE LOCATIONS
(3/8" - 16 UNC MOUNTING HARDWARE NOT SUPPLIED)



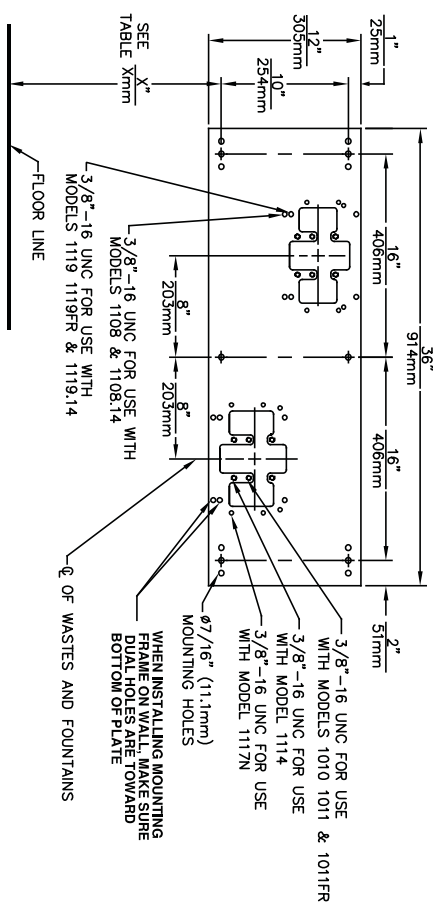
NOTES:

1. SEE SEPARATE INSTALLATION DRAWINGS FOR MOUNTING PLATES AND BACKPANELS
2. WHEN INSTALLING THIS UNIT, LOCAL, STATE OR FEDERAL CODES SHOULD BE ADHERED TO FOR INSTALLATION LOCATIONS, WASTE AND SUPPLY REQUIREMENTS OTHER THAN SHOWN.
3. REFER TO 1RKHO.H OPERATION & MAINTENANCE INSTRUCTIONS FOR SENSOR SETUP.



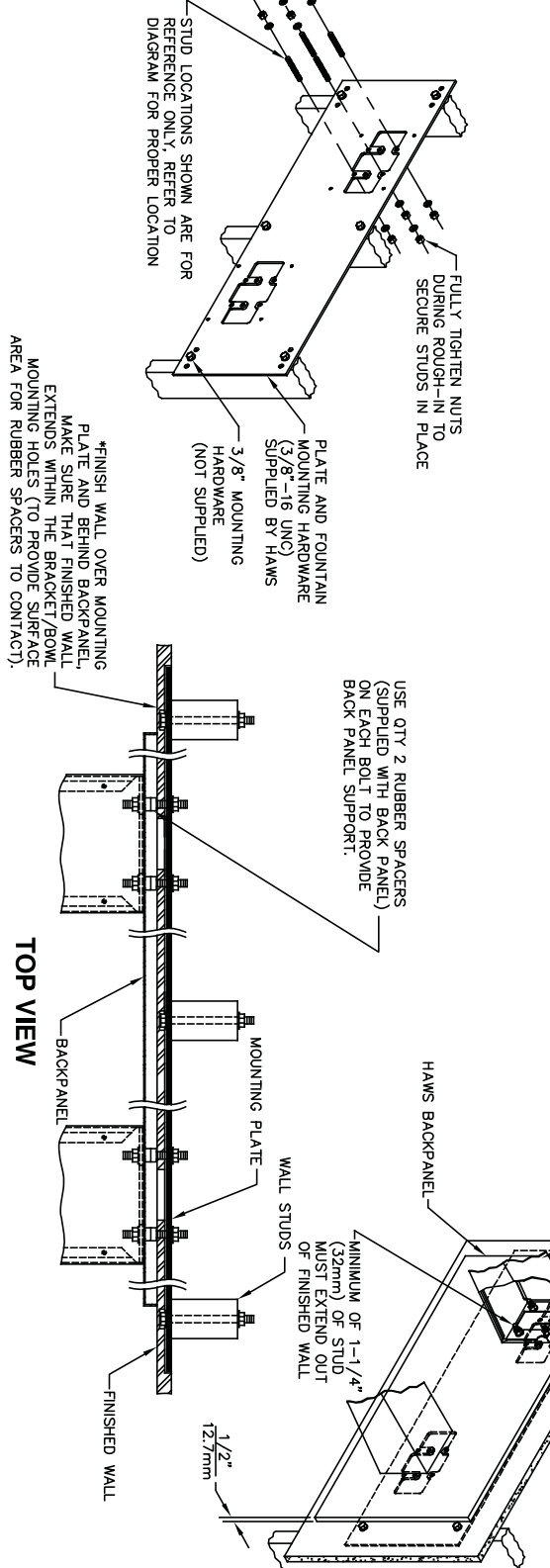
EQUIV. NO. REVISIONS PERMITTED BY:		MODEL(S)		PART NUMBER	
DATE	BY	DATE	BY	DATE	BY
05/19/21	LV	05/19/21	LV	05/19/21	LV
DRAWN BY: B.M.		1920HO/1920HPSHO/1920WHD		0510007063.D	
APPROVED: B.M.		SCALE: N/A		SHEET 1 OF 6	
DATE: 05/19/21		DRAWING TYPE: INSTALLATION		REVISION: 4	
SCALE: N/A		DRAWING TYPE: INSTALLATION		REVISION: 4	

THIS DOCUMENT IS TRUE AND CORRECT AT THE OF PUBLICATION. CONTINUED PRODUCT IMPROVEMENTS MAKE SPECIFICATIONS AND MEASUREMENTS SUBJECT TO CHANGE WITHOUT NOTICE.



DIMENSION	MODEL
"X"	1011
LOWER SUPPLY	25-1/2" [649mm]
LOWER WASTE	28-3/4" [730mm]
UPPER SUPPLY	27-7/8" [708mm]
UPPER WASTE	33-3/4" [857mm]
UPPER WASTE	32-7/8" [839mm]
DIMENSION	MODEL
"X"	1119
LOWER SUPPLY	27-5/8" [702mm]
LOWER WASTE	29-5/8" [752mm]
UPPER SUPPLY	30-3/4" [781mm]
UPPER WASTE	35-3/8" [905mm]
UPPER WASTE	36-1/2" [927mm]
DIMENSION	MODEL
"X"	1011FR
SUPPLY	25-1/2" [649mm]
WASTE	SEE FREEZE VALVE ROUGH-IN
DIMENSION	MODEL
"X"	1119FR
SUPPLY	27-5/8" [702mm]
WASTE	SEE FREEZE VALVE ROUGH-IN

DIMENSION	MODEL
"X"	1117N
LOWER SUPPLY	27" [686mm]
LOWER WASTE	29-1/2" [749mm]
UPPER SUPPLY	29-1/4" [743mm]
UPPER SUPPLY	35-1/2" [902mm]
UPPER WASTE	35-1/4" [895mm]



CAUTION

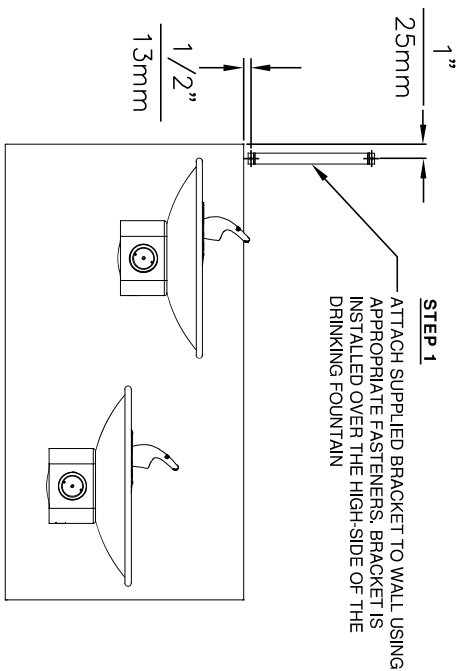
REGARDING CONCRETE/MASONRY WALL MOUNTING: DO NOT SECURE MOUNTING PLATE TO SAME SIDE OF WALL AS FOUNTAIN. AVOID COMPROMISING INTEGRITY OF WALL WHEN ANCHORING FOUNTAIN. IT IS RECOMMENDED THAT INSTALLER CALL TECHNICAL SUPPORT IF THERE ARE ANY QUESTIONS AS TO HOW TO OBTAIN A PROPER ANCHOR IN CONCRETE/MASONRY WALLS. 1-800-766-5612

1455 KLEPPE LANE
SPARKS, NEVADA 89431
(775) 359-4712 FAX (775) 359-7424
E-MAIL: HAWS@HAWSCO.COM
WEBSITE: WWW.HAWSCO.COM

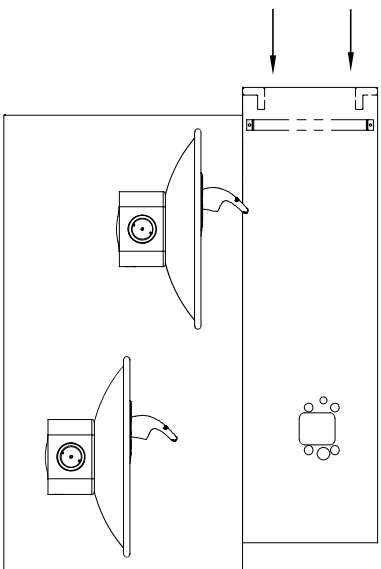
ED. NO.	REVISED PER:	MODEL(S)	6700.4
DRAWN	DATE	DATE	DATE
APPROVED	DATE	DATE	DATE
SCALE:	1:3	DRAWING TYPE:	INSTALLATION
PART NUMBER	0002080023	REVISION	16
SHEET	1	OF	1

©2017 Haws Corporation - All Rights Reserved. HAWS® and other trademarks used in these materials are the exclusive property of Haws Corporation.

THIS DOCUMENT IS TRUE AND CORRECT AT TIME OF PUBLICATION. CONTINUED PRODUCT IMPROVEMENTS MAKE SPECIFICATIONS AND MEASUREMENTS SUBJECT TO CHANGE WITHOUT NOTICE.



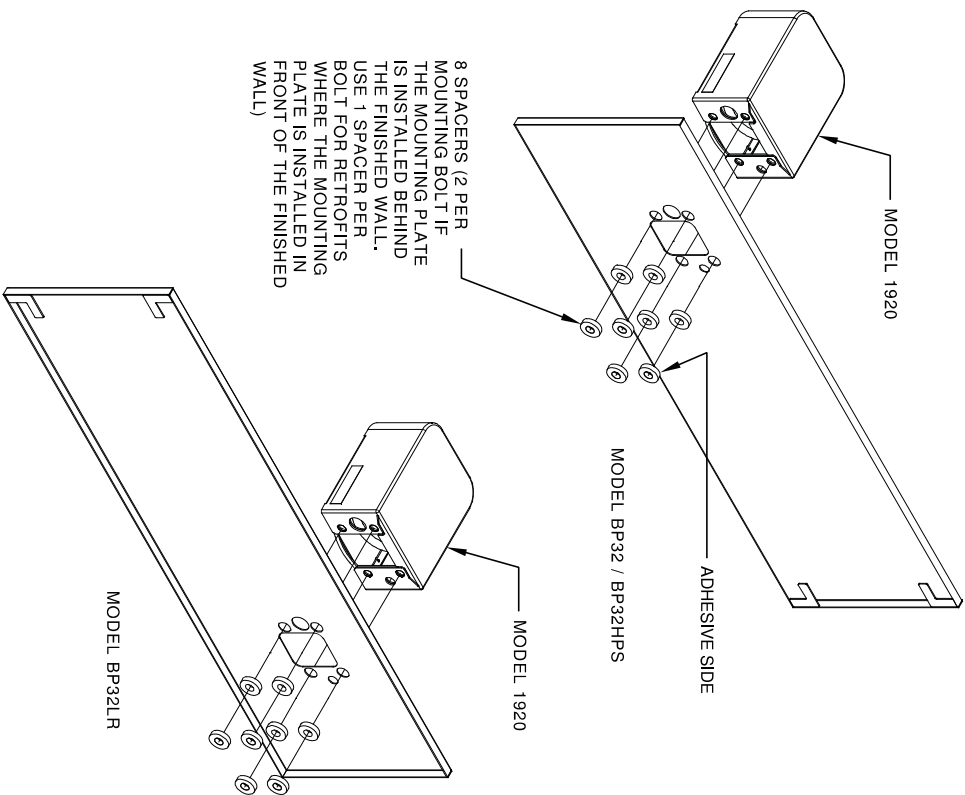
STEP 2
PLACE THE BACKPLATE AGAINST THE WALL AND SLIDE SIDEWAYS SO THE TABS CATCH UNDER THE BRACKET



STEP 3
INSTALL THE BOTTLE FILLER PER THE INSTRUCTIONS SUPPLIED WITH THE UNIT

NOTES:
1. WHEN INSTALLING THIS UNIT, LOCAL, STATE OR FEDERAL CODES SHOULD BE ADHERED TO.

©2017 Haws Corporation - All Rights Reserved. HAWS® and other trademarks used in these materials are the exclusive property of Haws Corporation.



INSTALLATION OVER DOUBLE FOUNTAIN
SHOWN FROM REAR

		Haws	
ECONOMY PREPARED PER BY: MODEL(S)		DRAWING, BACK PANEL SPACER INST. BF	
DATE: 5/17/2	DATE: 1/10/21	DATE: 1/10/21	DATE: 1/10/21
APPROVED: [Signature]	DATE: 02/27/17	SCALE: 1:1	DRAWING TYPE: INSTALLATION
1455 KLEPPE LANE SPARKS, NEVADA 89431 (775) 359-4712 FAX (775) 359-7424 E-MAIL: HAWS@HAWSCO.COM WEBSITE: WWW.HAWSCO.COM		PART NUMBER: 0510000493.D REVISION: 2	