



Haws®

model 1311HO-1920WHO

ADA Vandal-Resistant White Enameled Iron Motion-Activated Fountain and Bottle Filler

FEATURES & BENEFITS

CONSTRUCTION

Heavy-duty cast-iron ADA accessible bowl with a glossy white enamel finish is designed for the toughest of applications, and at the same time is gentle to all users with its soft rounded corners. Unit also ships with vandal resistant bottom plates to provide added peace of mind

BOTTLE FILLER

Powder-coated white 14-gauge Type 304 stainless steel bottle filler housing with touchless operation and 1 gpm (3.78 L) laminar flow with 30-second obstruction time-out.

FOUNTAIN VALVES

Fountain incorporates touchless sensor operated stainless steel solenoid valves controlled by a transformer for hands free operation. A pressure regulator is used to adjust the bubbler flow according to incoming water pressures.

BUBBLER HEAD

Polished chrome-plated brass bubbler head with integral laminar flow prevents splashing while providing a superior flow pattern. The integral 1 1/16" dia. basin shank and stainless anti-rotation roll pin for vandal resistance strength. Shielded, angled stream opening provides a steady, sanitary source of drinking water at .45 gpm.

VANDAL-RESISTANT

The bubbler head, drain strainer and bottom plates are locked in place, discouraging unwanted vandal tampering.

OPTIONS

Mounting Plate: Model 6700, in-wall mounting plate for model 1920W and/or 1311HO.

Mounting Plate: Model 6700R, on-wall mounting plate for model 1920W.

Support Frame: Model 6800 In-wall floor mounted fixture support legs, welded steel 4-bolt floor flanges, and supplied with 'U' bolts and hardware.

Bottle Filler Stand: Model BTL1311, add-on stainless steel stand to place bottle on when 1920 bottle filler is used.

Water Filter: Model 6426, 10" x 2" (25.4 x 5.1 cm), in-line lead removal element that reduces lead from incoming water supply.



REQUIRED MODELS

1311HO / BP8W / 1920WHO / BP15W

Order these items to make up the Model 1311HO-1920WHO white enameled-iron fountain and white painted stainless steel bottle filler.

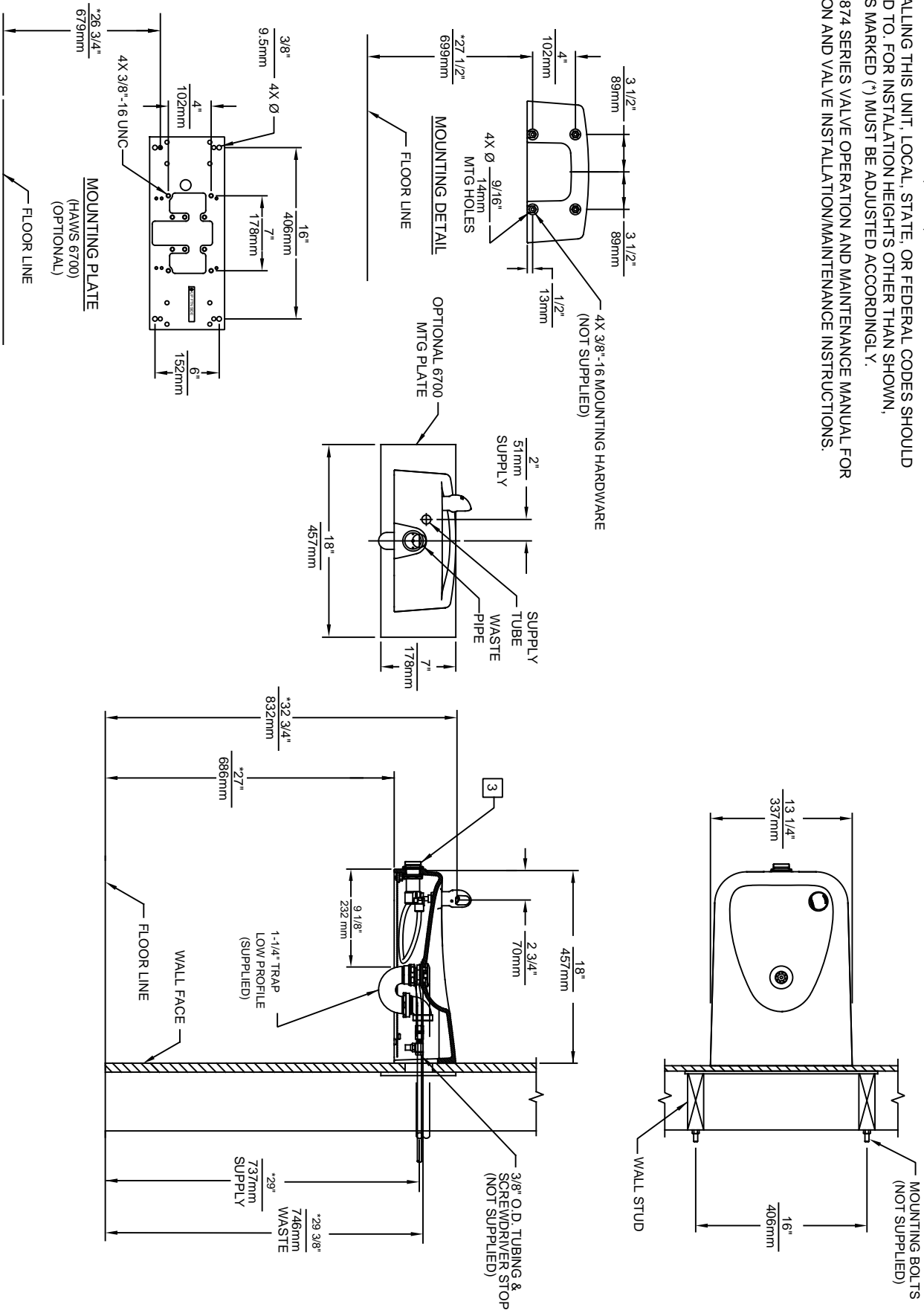
FOR INDOOR USE ONLY

SPECIFICATIONS

Model 1311HO-1920WHO wall mounted vandal-resistant ADA drinking motion activated fountain and bottle filler shall include a white enameled-iron basin, and 14 gauge Type 304 powder-coated stainless-steel bottle filler bracket, 100% lead-free waterways, touchless sensor operated stainless steel solenoid valves with 30-second obstruction time-out controlled by a transformer, polished chrome-plated brass vandal-resistant bubbler head with integral anti-squirt flow, 1 gpm (3.78 L) laminar flow bottle filler, chrome plated brass vandal-resistant waste strainer, vandal-resistant bottom plates, and a 1-1/4" NPT trap. Manufactured to be lead-free by all known definitions including NSF/ ANSI/CAN 61-Section 9, NSF/ANSI/CAN 372, California Proposition 65, and the Federal Safe Drinking Water Act. Product is compliant to California Health and Safety Code 116875 (AB 1953-2006), and NSF/ ANSI/CAN 61: Q ≤ 1.

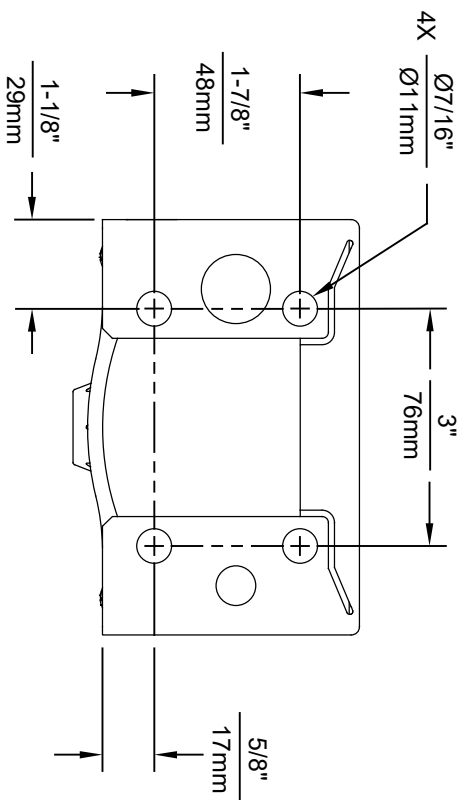
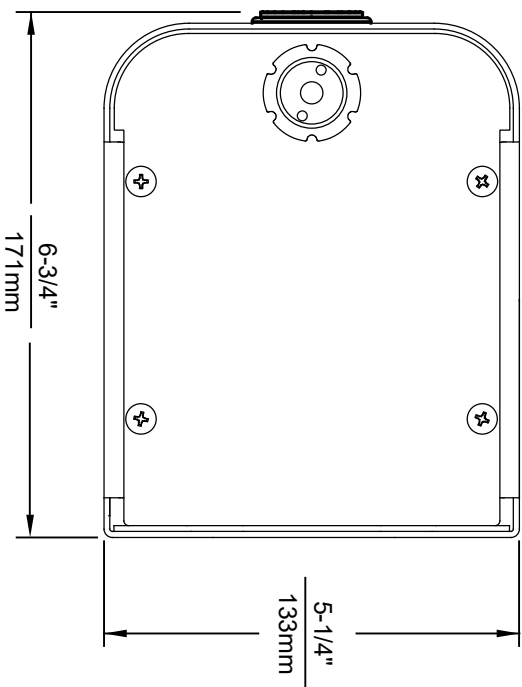
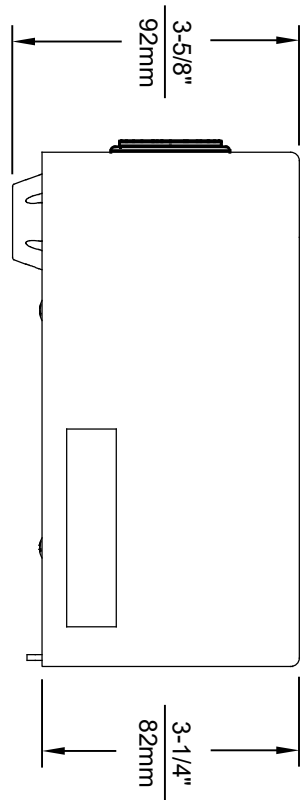


1. HOLD ROUGH-IN DIMENSIONS $\pm 1/4"$ (6.4MM).
2. WHEN INSTALLING THIS UNIT, LOCAL, STATE, OR FEDERAL CODES SHOULD BE ADHERED TO. FOR INSTALLATION HEIGHTS OTHER THAN SHOWN, DIMENSIONS MARKED (*) MUST BE ADJUSTED ACCORDINGLY.
3. REFER TO 5874 SERIES VALVE OPERATION AND MAINTENANCE MANUAL FOR PUSH BUTTON AND VALVE INSTALLATION/MAINTENANCE INSTRUCTIONS.

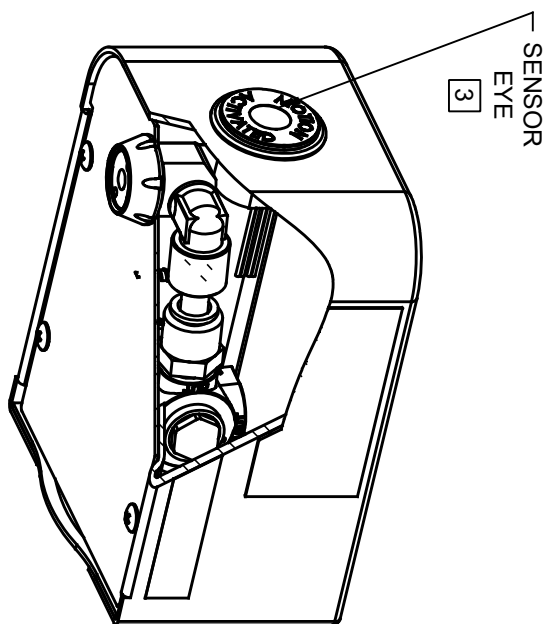


1456 KLEPPE LANE
 SPARKS, NEVADA, 89431
 (775) 359-4712 FAX (775) 359-7424
 E-MAIL: HAWS@HAWS.CO.COM
 WEBSITE: WWW.HAWS.CO.COM

ECN NO. REVISED PER BY:	MODEL(S)
5010 ECN: 5258 JP	1311
DATE: 08/25/15 GC	
APPROVED: FV	SCALE: 1:14 DRAWING TYPE: INSTALLATION
DATE: 11/23/17	SIZE: A SHEET: 1 OF 1
REVISION: 4	



1920HO SERIES MOUNTING HOLE LOCATIONS
(3/8\" - 16 UNC MOUNTING HARDWARE NOT SUPPLIED)



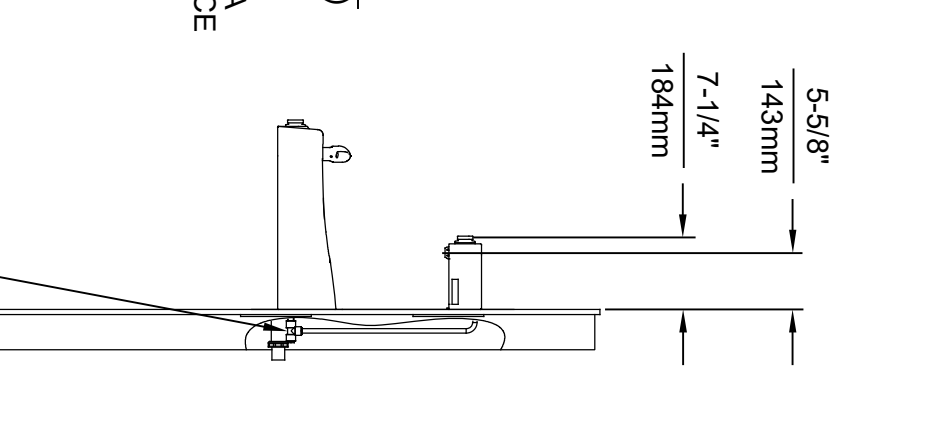
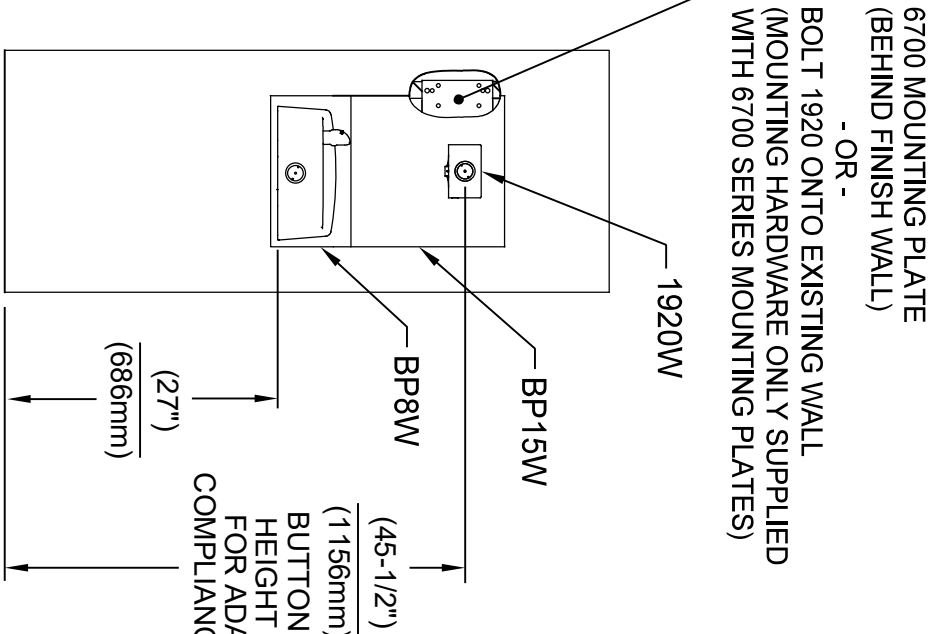
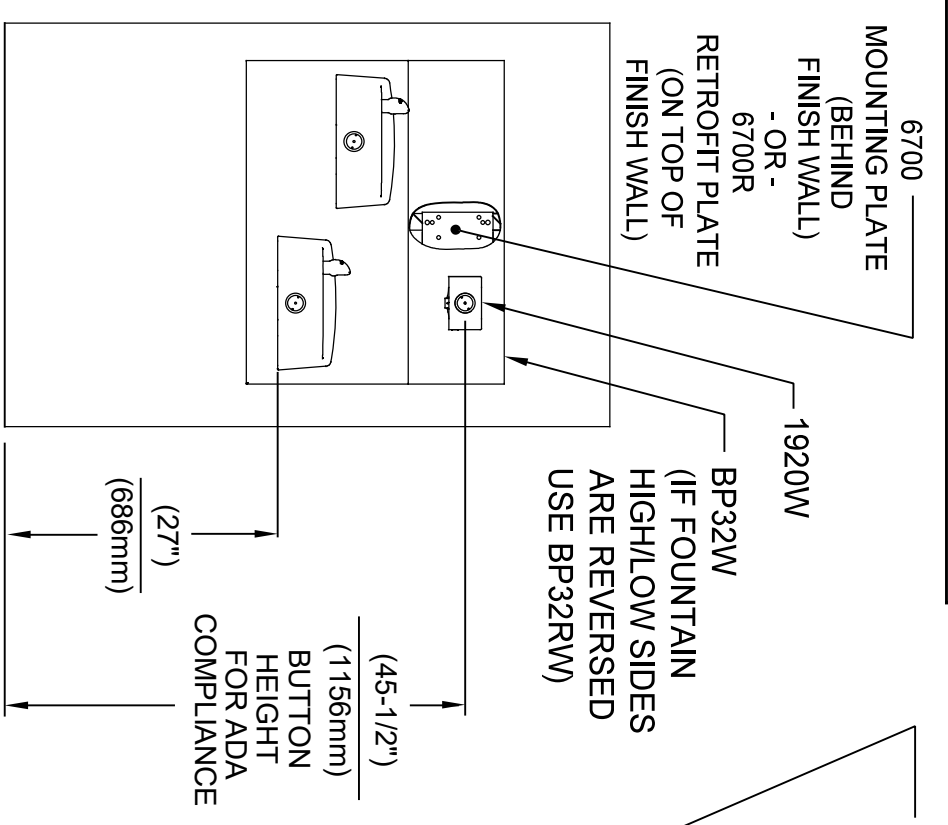
NOTES:

1. SEE SEPARATE INSTALLATION DRAWINGS FOR MOUNTING PLATES AND BACKPANELS
2. WHEN INSTALLING THIS UNIT, LOCAL, STATE OR FEDERAL CODES SHOULD BE ADHERED TO FOR INSTALLATION LOCATIONS, WASTE AND SUPPLY REQUIREMENTS OTHER THAN SHOWN.
3. REFER TO 1RKHO.H OPERATION & MAINTENANCE INSTRUCTIONS FOR SENSOR SETUP.



1455 KLEPPE LANE
SPARKS, NEVADA 89431
(775) 359-4712 FAX (775) 359-7424
E-MAIL: HAWS@HAWSCCO.COM
WEBSITE: WWW.HAWSCCO.COM

EQ. NO.	REVISED PER BY	MODEL(S)	PART NUMBER
5274	EQ. 5681 B.M.	1920HO/1920HPSHO/1920WHO	0510001063.D
DRAWN BY	DATE	SCALE	REVISION
B.M.	05/19/21	N/A	4
APPROVED	DATE	DRAWING TYPE	SHEET 1 OF 6
B.M.	05/19/21	INSTALLATION	

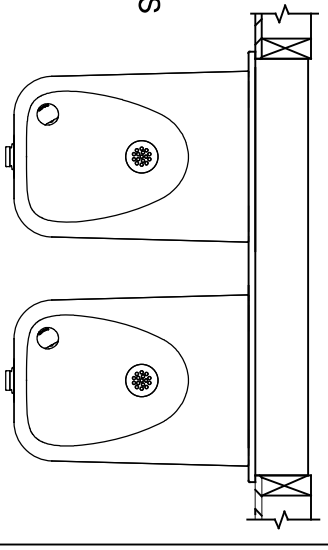


INSTALLATION ABOVE HAWS 1501

INSTALLATION ABOVE HAWS 1311

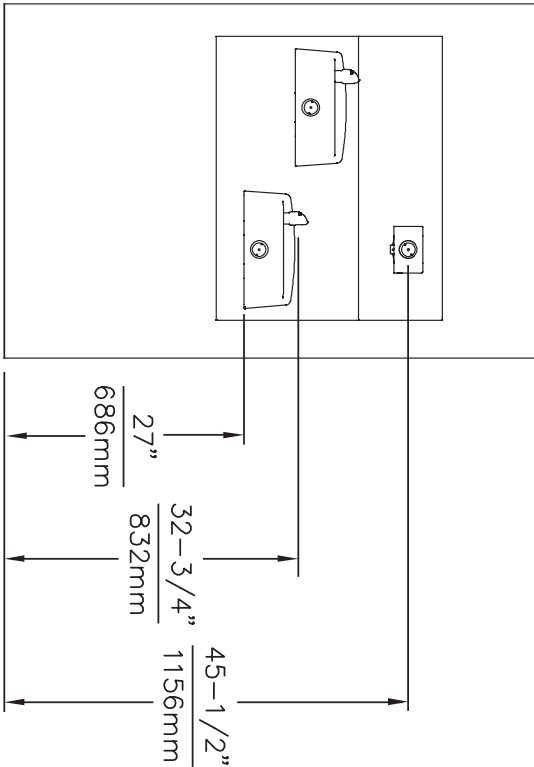
* IF YOUR FOUNTAIN IS THIS STYLE USE THESE DIMENSIONS

1. SEE SEPERATE INSTALLATION DRAWINGS FOR MOUNTING PLATES AND BACKPANELS
2. WHEN INSTALLING THIS UNIT, LOCAL, STATE OR FEDERAL CODES SHOULD BE ADHERED TO FOR INSTALLATION LOCATIONS, WASTE & SUPPLY REQUIREMENTS OTHER THAN SHOWN.

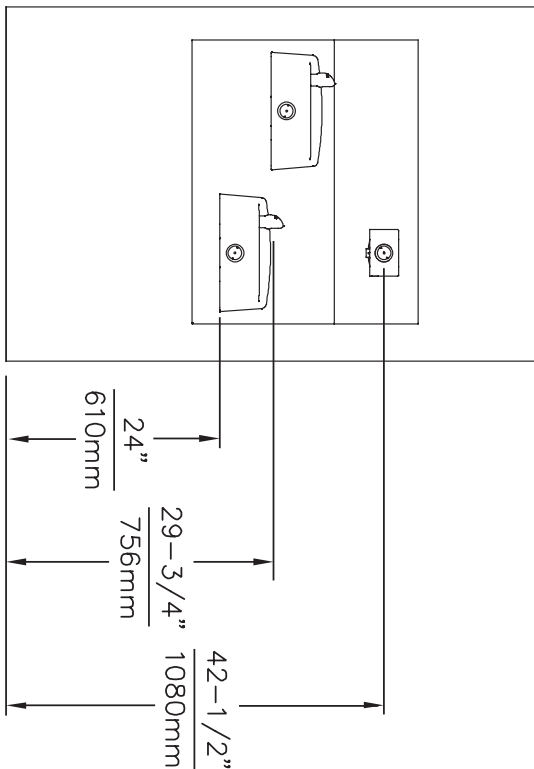


Haws

ECN NO. REMISED PER BY:	MODEL(S)	1459 KLEPPE LANE
5081		SPARKS, NEVADA, 89431
DATE:		(775) 359-4712 FAX (775) 359-7424
02/13/17		E-MAIL: HAWS@HAWSCO.COM
DATE:		WEBSITE: WWW.HAWSCO.COM
07/19/21		
SCALE:	N/A	
DRAWING TYPE:		
INSTALLATION:		
SIZE:	A	
SHEET:	5	OF 7
REVISION:	9	
PART NUMBER:	1920/1920HPS/1920W	
0510000490.D		



ADA ADULT ACCESSIBLE DIMENSIONS 1501 AND 1311
 DIMENSIONS ALSO APPLY TO SINGLE FOUNTAIN MODEL 1311 (NOT SHOWN)



ADA CHILD ACCESSIBLE DIMENSIONS 1501 AND 1311
 DIMENSIONS ALSO APPLY TO SINGLE FOUNTAIN MODEL 1311 (NOT SHOWN)



1455 KLEPPE LANE
 SPARKS, NEVADA 89431
 (775) 359-4712 FAX (775) 359-7424
 E-MAIL: HAWS@HAWS.CO.COM
 WEBSITE: WWW.HAWS.CO.COM

EQ. NO.	REVISED/FER/ BY:	MODEL(S)	
DRAWN	DATE	CHKD:	
SCALE	DATE		
APPROV. (EP)	DATE		
		MODEL(S)	
		WITH MODEL	
		1920 BOTTLE FILLER	
		INSTALLATION	
		SIZE	A
		SHEET	1 OF 1
		PART NUMBER	1501-24
		REVISION	0A.1