

### FEATURES & BENEFITS

#### CONSTRUCTION

Rugged ADA accessible 18 gauge Type 304 Stainless Steel swirl design bowls, 14 gauge Type 304 Stainless Steel brackets and bottle filler, and vandal-resistant bottom plates provides a long lasting unit with added peace of mind.

#### BOTTLE FILLER

Vandal-resistant, 14-gauge Type 304 stainless steel bottle filler housing with touchless operation and 1 gpm (3.78 L) laminar flow.

#### VANDAL RESISTANT

The bubbler heads, push button, round bowls, drain strainers and bottom plates are locked in place, discouraging unwanted vandal tampering, and 30-second obstruction time-out to reduce tampering of sensor.

#### BUBBLER HEADS

Polished chrome-plated brass bubbler heads with integral laminar flow prevents splashing while providing a superior flow pattern. The integral 11/16" basin shank and stainless anti-rotational roll pin add vandal resistance strength. Shielded, angled stream opening provides a steady, sanitary source of drinking water at .45 gpm.

#### FOUNTAIN VALVES

Fountain incorporates touchless sensor operated stainless steel solenoid valves controlled by a transformer for handsfree operation. A pressure regulator is used to adjust the bubbler flow according to incoming water pressures.

#### MOUNTING

Galvanized frame and 10 gauge surface plate provide the maximum mounting strength for the 'Hi-Lo' MS style Haws drinking fountains.

### OPTIONS

- Mounting Plate: Model 6700R, on-wall mounting plate for model 1920.
- Mounting Plate: Model 6700, in-wall mounting plate for model 1920.
- Bottle Filler Stand: Model BTL1001, add-on stainless steel stand to place bottle on when 1920 bottle filler is used.
- Fountain Skirt: Model SK3, stainless steel cane touch skirt for installation on high unit in some applications that may need to comply with ADA protruding objects guidelines.

For more information, visit [www.hawscos.com](http://www.hawscos.com) or call (888) 640-4297.



### REQUIRED MODELS

#### 1011MSHO2 / MTGFR.DF2 / 1920HO / BP32

Order these items to make up Model 1011MSHO2-1920HO fountain with stainless steel back panel, bottle filler with stainless steel back plate, and fountain mounting frame shown above.

#### FOR INDOOR USE ONLY

### SPECIFICATIONS

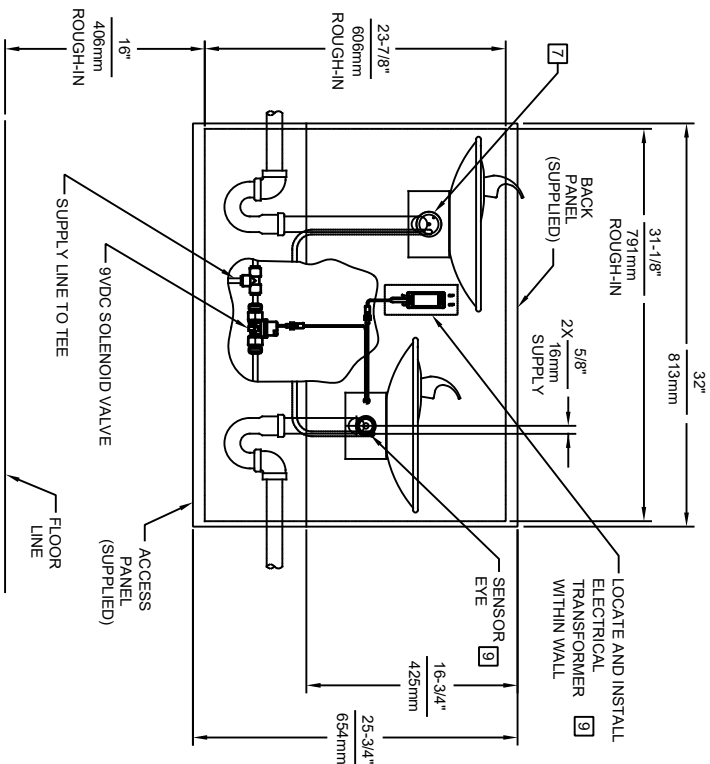
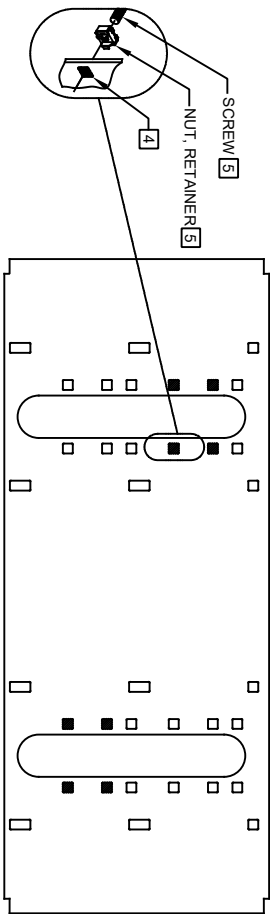
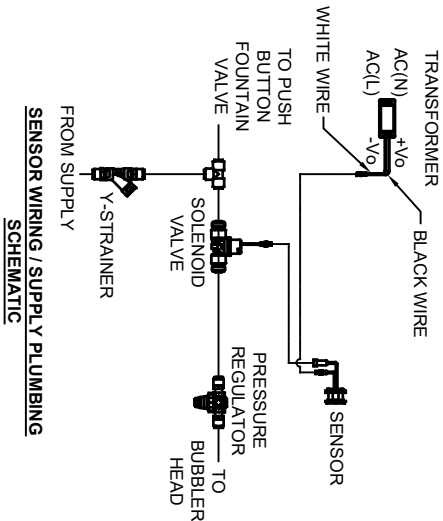
Model 1011MSHO2-1920HO ADA vandal-resistant wall mounted motion-activated drinking fountain and bottle filler shall include dual 18-gauge Type 304 Stainless Steel basins with integral swirl design, 14 gauge Type 304 Stainless Steel wall brackets and bottle filler bracket, in-wall mounting frame with lower access panel allowing for front access of P-trap and stop, 100% lead-free waterways, touchless sensor operated stainless steel solenoid valves with 30-second obstruction time-out controlled by a transformer, polished chrome-plated brass vandal resistant bubbler heads with integral laminar anti-squirt flow, 1gpm (3.78L) laminar flow bottle filler, chrome-plated brass vandal-resistant waste strainers, high and low fountain mounting levels, stainless steel satin finish back panels, and 1-1/4" O.D. (3.2 cm) waste pipes. Manufactured to be lead-free by all known definitions including NSF/ANSI/CAN 61-Section 9, NSF/ANSI/ CAN 372, California Proposition 65, and the Federal Safe Drinking Water Act. Product is compliant to California Health and Safety Code 116875 (AB 1953-2006), and 116876 (AB 100) "NSF/ANSI/CAN 61: Q ≤ 1".

**The bottle filler requires a mounting plate; either the Haws model 6700 in-wall or the 6700R on-wall support plate.**





NOTES:

1. HOLD ROUGH-IN DIMENSIONS  $\pm 1/8"$  (3.2mm).
2. WHEN INSTALLING THIS UNIT, LOCAL, STATE, OR FEDERAL CODES SHOULD BE ADHERED TO FOR DIMENSIONS (LOCATIONS), WASTE AND SUPPLY REQUIREMENTS OTHER THAN SHOWN.
3. INSTALLER MUST PROVIDE TRAP (NOT SUPPLIED) FOR PROPER INSTALLATION.
4. HOLE COMBINATION SHOWN IS FOR USE WITH LOW FOUNTAIN ON THE RIGHT AND HIGH FOUNTAIN ON THE LEFT. USE OPPOSITE HOLES FOR HIGH ON RIGHT AND LOW ON LEFT.
5. TO CHANGE FOUNTAIN MTG. SCREW LOCATIONS: FIRST REMOVE SCREWS AND THEN SQUEEZE CLIPS ON NUT RETAINER TO POP OUT. SNAP INTO NEW POSITIONS FROM BACKSIDE AND RE-ASSEMBLE SCREWS.
6. IMPORTANT: A L.H. LOW (OPTIONAL) CONFIGURATION WILL REQUIRE A DIFFERENT BACK PANEL AND THE WASTE AND SUPPLY DIMENSIONS SHOWN (\*) MUST BE REVERSED.
7. REFER TO 5874 SERIES OPERATION AND MAINTENANCE MANUAL FOR PUSH BUTTON AND VALVE INSTALLATION/MAINTENANCE INSTRUCTIONS.
8. REMOVE VALVE FROM PUSH BUTTON TO INSTALL WASTE ELBOW ONTO BOWL. AFTER WASTE ELBOW IS INSTALLED, REINSTALL VALVE AND ADJUST FLOW.
9. REFER TO 1RKH0 H & 2RKH0 H OPERATION AND MAINTENANCE INSTRUCTIONS FOR TRANSFORMER AND SENSOR SETUP.



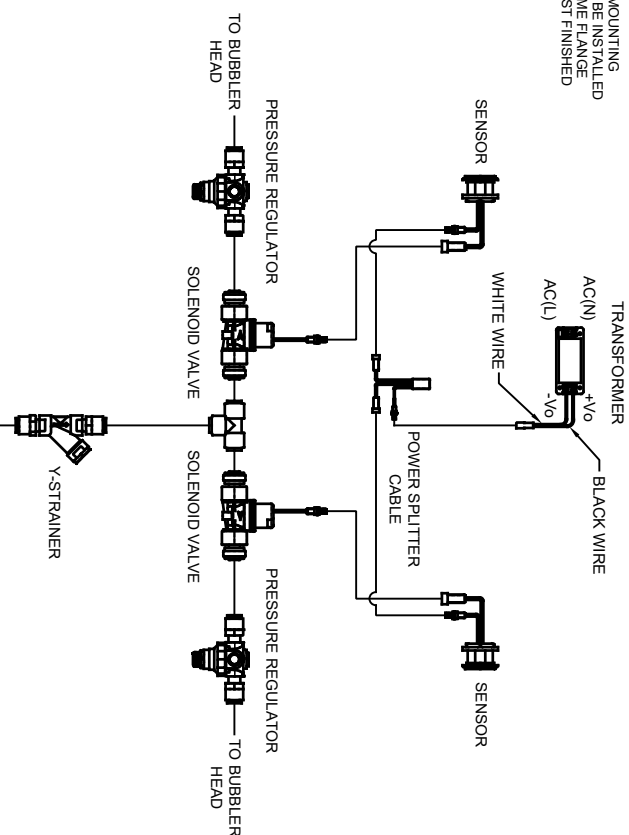
MODEL 1011MSHO SHOWN  
MODEL 1011MSHO2 ON SHEET 3  
(ROUGH-IN DIMENSIONS APPLY TO BOTH MODELS)



1456 KLEPPE LANE  
SPARKS, NEVADA 89431  
(775) 359-4712 FAX (775) 359-7424  
E-MAIL: HAWS@HAWS.CO.COM  
WEBSITE: WWW.HAWS.CO.COM

|                            |                |                    |              |
|----------------------------|----------------|--------------------|--------------|
| ECN NO.                    | REVISED PERBY: | MODEL(S)           | PART NUMBER  |
| 5701                       | ECN 5701 FV    | 1011MSHO/1011MSHO2 | 0510001206.D |
| FW                         | DATE: 05/27/21 | CHKD: DP           | REVISION     |
| APPROVED: FV               | DATE: 06/02/21 | SCALE: 1:16        | SHEET 1 OF 3 |
| DRAWING TYPE: INSTALLATION |                | SIZE: A            |              |

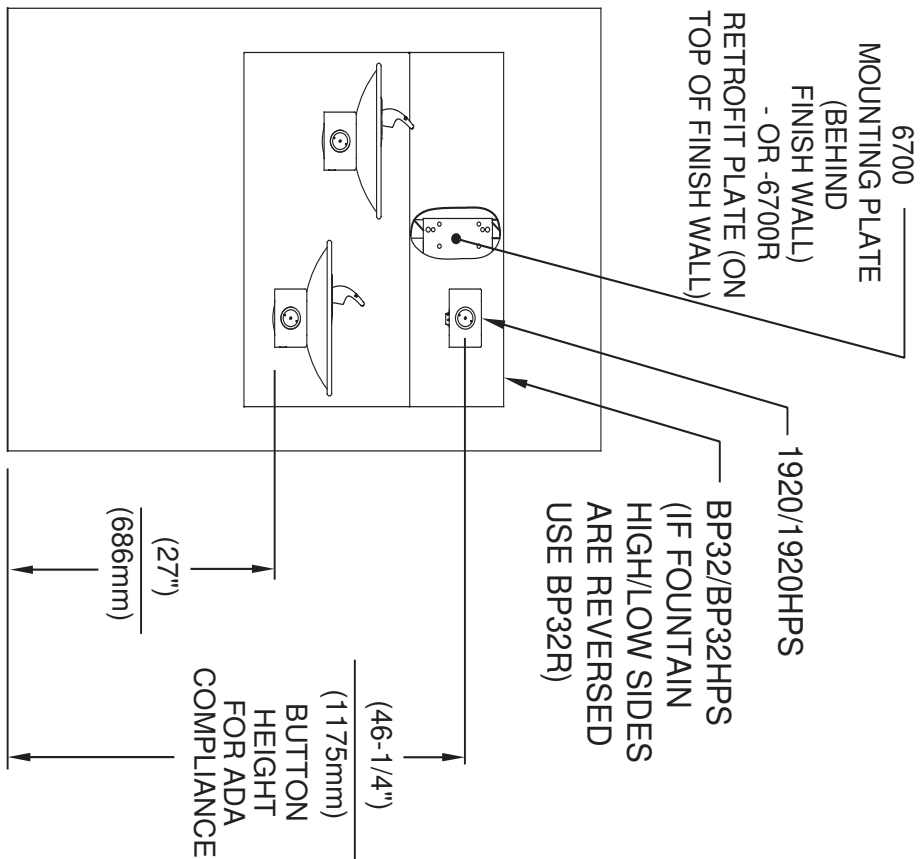




MODEL 1011MSHO2 SHOWN  
MODEL 1011MSHO ON SHEETS 1 AND 2  
(SEE SHEETS 1 AND 2 FOR APPLICABLE ROUGH-IN DIMENSIONS)

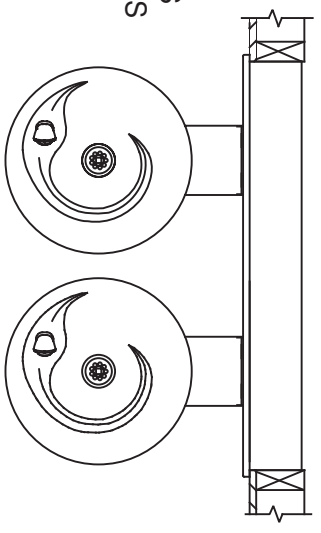


©2021 Haws Corporation - All Rights Reserved. HAWS® and other trademarks used in these materials are the exclusive property of Haws Corporation

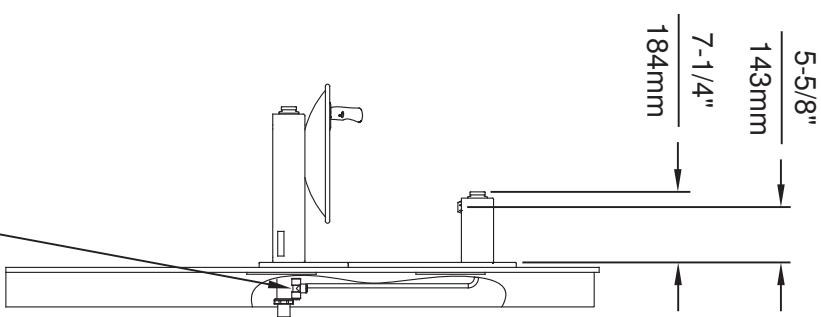


**INSTALLATION ABOVE HAWS 1011, 1011HPS, 1011HPSMS,  
1011MS, H1011.8, H1011.8HO, H1011.8HPS**

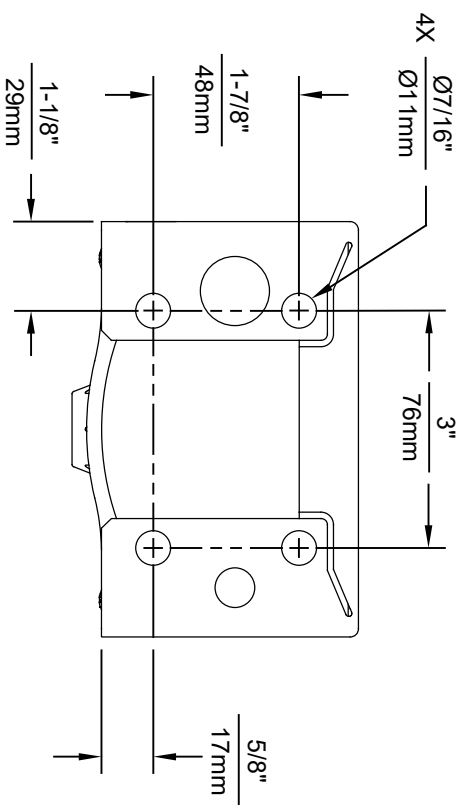
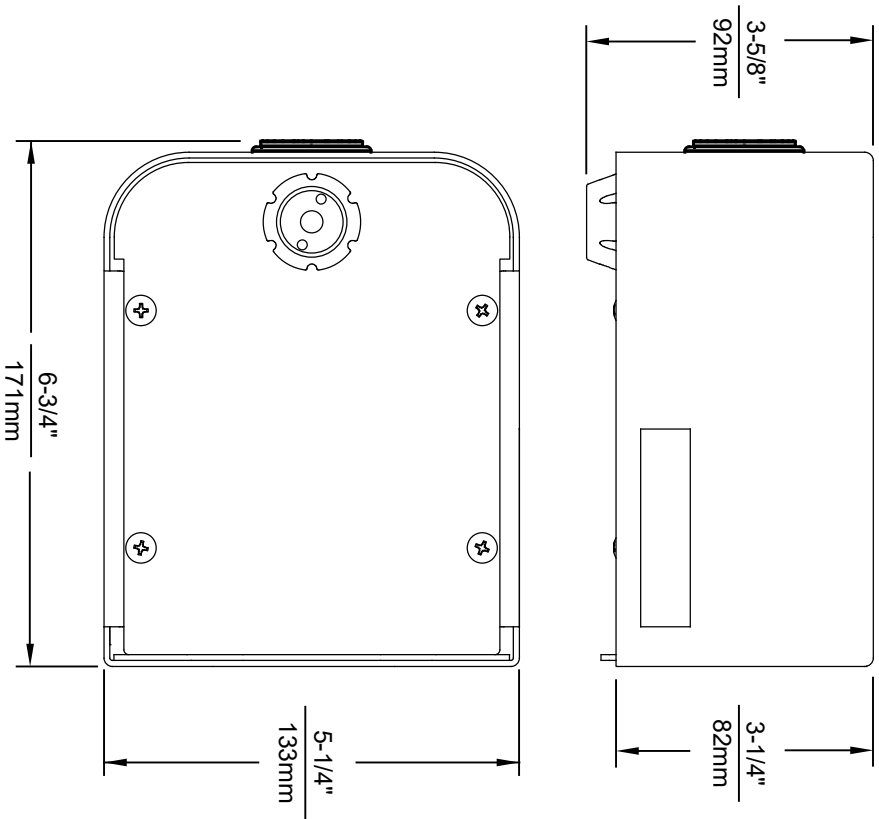
\* IF YOUR FOUNTAIN IS THIS STYLE USE  
THESE DIMENSIONS



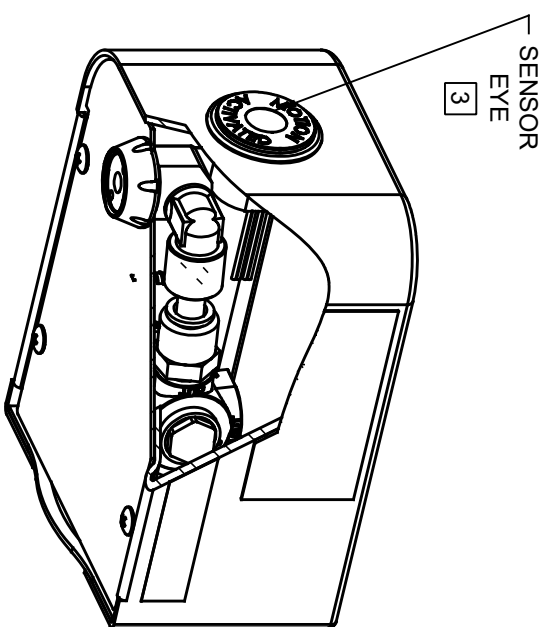
1. SEE SEPARATE INSTALLATION DRAWINGS  
FOR MOUNTING PLATES AND BACKPANELS
2. WHEN INSTALLING THIS UNIT, LOCAL,  
STATE OR FEDERAL CODES SHOULD  
BE ADHERED TO FOR INSTALLATION  
LOCATIONS, WASTE & SUPPLY  
REQUIREMENTS OTHER THAN SHOWN.



|   |  |   |  |   |  |
|---|--|---|--|---|--|
|  |  |  |  | 1455 KLEPPE LANE<br>SPARKS, NEVADA 89431<br>(775) 359-4712 FAX (775) 359-7424<br>E-MAIL: HAWS@HAWSCO.COM<br>WEBSITE: WWW.HAWSCO.COM |  |
| EQ. NO. REVISED PER BY:   |  | MODEL(S)  |  | PART NUMBER   |  |
| 5081 EQ. 5550 F.V.  |  | 1920/1920HPS  |  | 0510000490.D  |  |
| DRAWN: MJ DATE: 01/30/17 CHK'D: DP  |  |   |  | REVISION  |  |
| APPROVED: F.V. DATE: 05/14/20   |  | SCALE: N/A  |  | SHEET 2 OF 6  |  |
|   |  | DRAWING TYPE:   |  | INSTALLATION  |  |
|   |  | SIZE: A   |  | 6   |  |




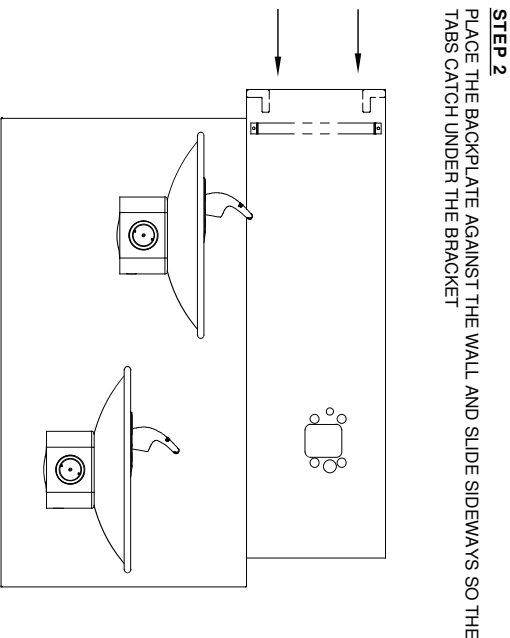
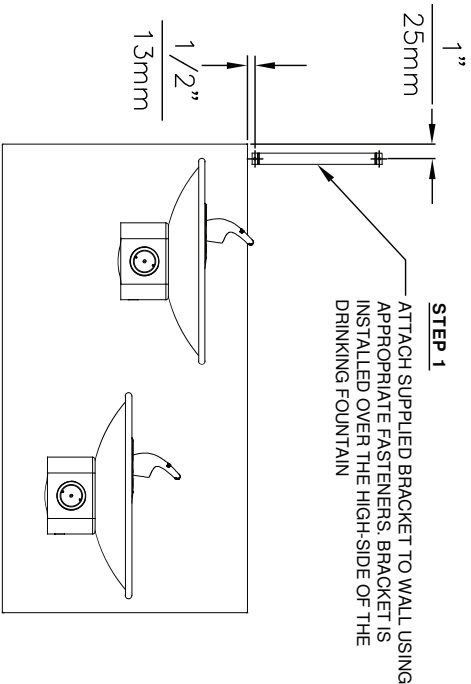
1920HO SERIES MOUNTING HOLE LOCATIONS  
(3/8"-16 UNC MOUNTING HARDWARE NOT SUPPLIED)



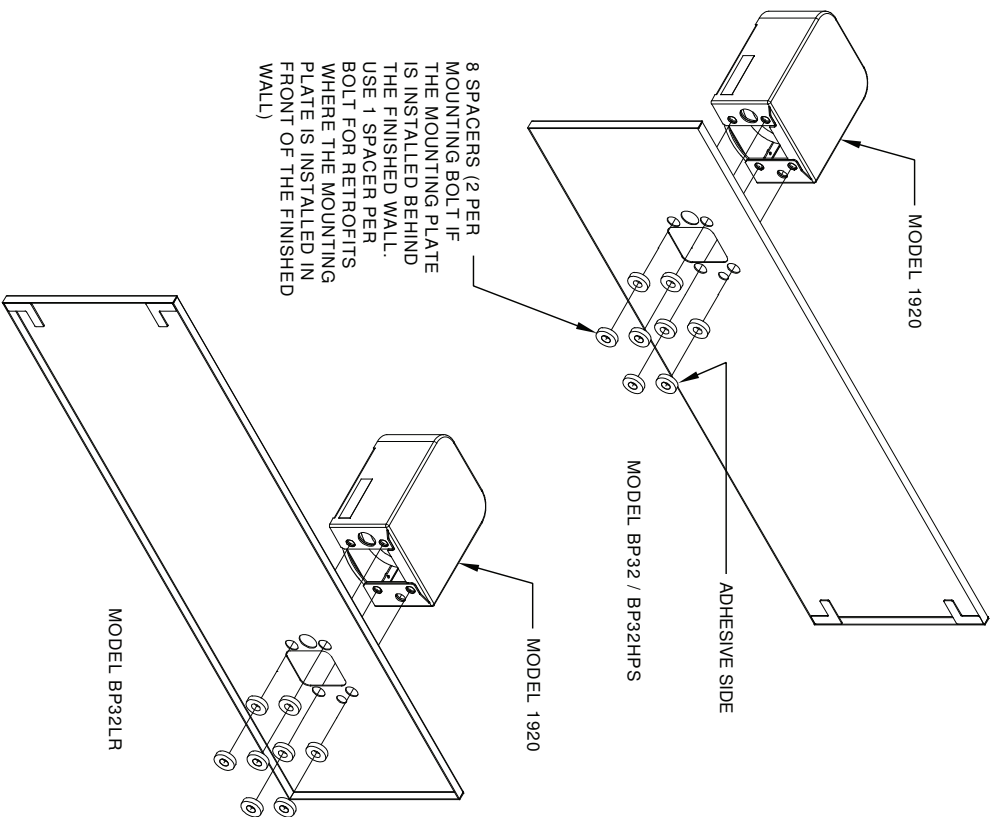
NOTES:

1. SEE SEPARATE INSTALLATION DRAWINGS FOR MOUNTING PLATES AND BACKPANELS
2. WHEN INSTALLING THIS UNIT, LOCAL, STATE OR FEDERAL CODES SHOULD BE ADHERED TO FOR INSTALLATION LOCATIONS, WASTE AND SUPPLY REQUIREMENTS OTHER THAN SHOWN.
- 3 REFER TO 1RKHO.H OPERATION & MAINTENANCE INSTRUCTIONS FOR SENSOR SETUP.

|   |  |   |  |   |  |
|---|--|---|--|---|--|
|  |  |  |  | 1455 KLEPPE LANE<br>SPARKS, NEVADA 89431<br>(775) 359-4712 FAX (775) 359-7424<br>E-MAIL: HAWS@HAWS.CO.COM<br>WEBSITE: WWW.HAWS.CO.COM |  |
| EQUIPMENT NO. 1920HO/1920HPSHO/1920WHD  |  | MODEL(S)  |  | PART NUMBER   |  |
| DRAWING NO. 0510001063.D  |  | SCALE: N/A  |  | SHEET 1 OF 6  |  |
| APPROVED: [Signature]   |  | DATE: 05/19/21  |  | REVISION  |  |
| BIM   |  | SCALE: N/A  |  | SHEET 1 OF 6  |  |



- STEP 3**
- INSTALL THE BOTTLE FILLER PER THE INSTRUCTIONS SUPPLIED WITH THE UNIT
- NOTES:**
1. WHEN INSTALLING THIS UNIT, LOCAL, STATE OR FEDERAL  
CODES SHOULD BE ADHERED TO.



## INSTALLATION OVER DOUBLE FOUNTAIN SHOWN FROM REAR

|                |                   |   |                           |
|----------------|-------------------|---|---------------------------|
|                |                   | 1455 KLEPPE LANE<br>SPARKS, NEVADA 89431<br>(775) 359-4712 FAX (775) 359-7424<br>E-MAIL: HAWS@HAWSCO.COM<br>WEBSITE: WWW.HAWSCO.COM |                           |
| ECN NO. 5081   | REvised PERBY: MJ | MODEL(S) DRAWING, BACK PANEL SPACER INST, BF  | PART NUMBER 06510000493.D |
| DATE: 10/02/17 | CHKD: FV          | SCALE: 1:1  | SHEET 2 OF 2              |
| APPROVED: FV   | DATE: 06/27/17    | DRAWING TYPE: INSTALLATION  | REVISION                  |