

FEATURES & BENEFITS

CONSTRUCTION

Rugged ADA accessible 18 gauge Type 304 Stainless Steel swirl design bowls, 14 gauge Type 304 Stainless Steel brackets, and a vandal-resistant bottom plate provides a long lasting unit with added peace of mind.

BOTTLE FILLER

14-gauge Type 304 stainless steel bottle filler housing with touchless operation and 1 gpm (3.78 L) laminar flow with 30-second obstruction time-out.

VANDAL RESISTANT

The bubbler heads, sensors, round bowls, drain strainers and bottom plates are locked in place, discouraging unwanted vandal tampering, and 30-second obstruction time-out to reduce tampering of sensors.

BUBBLER HEADS

Polished chrome-plated brass bubbler heads with integral laminar flow prevents splashing while providing a superior flow pattern. The integral 11/16" dia. basin shank and stainless anti-rotation roll pin for vandal resistance strength. Shielded, angled stream opening provides a steady source of drinking water at .45 gpm.

FOUNTAIN VALVES

Fountain incorporates touchless sensor operated stainless steel solenoid valves controlled by a transformer for hands-free operation. A pressure regulator is used to adjust the bubbler flow according to incoming water pressures.

MOUNTING

3/16" (.47 cm) thick steel mounting plate (sold separately) is larger, thicker and stronger than any other plate in the industry, and shall include the all-thread studs, nuts, and washers which allows for easy installation to a framed wall.

OPTIONS

- Support Frame: Model 6800 universal in-wall mounting support for use with most fountains.
- Mounting Plate: Model 6700R, on-wall mounting plate for model 1920.
- Mounting Plate: Model 6700, in-wall mounting plate for model 1920.
- Access Panel: Model 6603HPS, satin finish stainless steel access panel. Includes frame and screws.

For more information, visit www.hawsco.com or call (888) 640-4297.



REQUIRED MODELS

1011HPSHO2 / 6700.4 / 1920HPSHO / BP32HPS

Order these items to make up Model 1011HPSHO2-1920HPSHO fountain with stainless steel back panel, bottle filler with stainless steel back plate, and fountain mounting plate shown above.

FOR INDOOR USE ONLY

SPECIFICATIONS

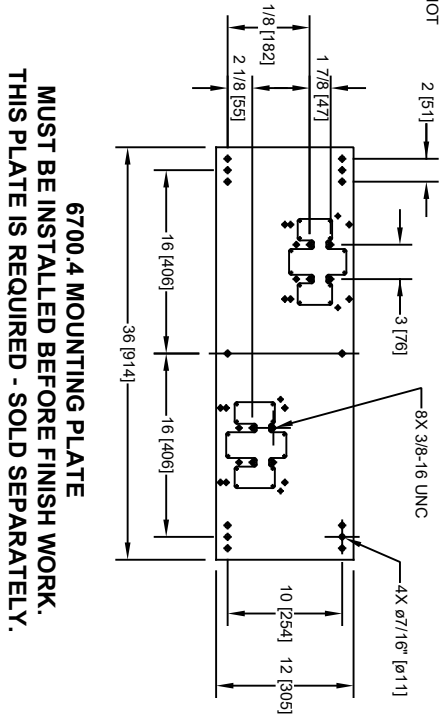
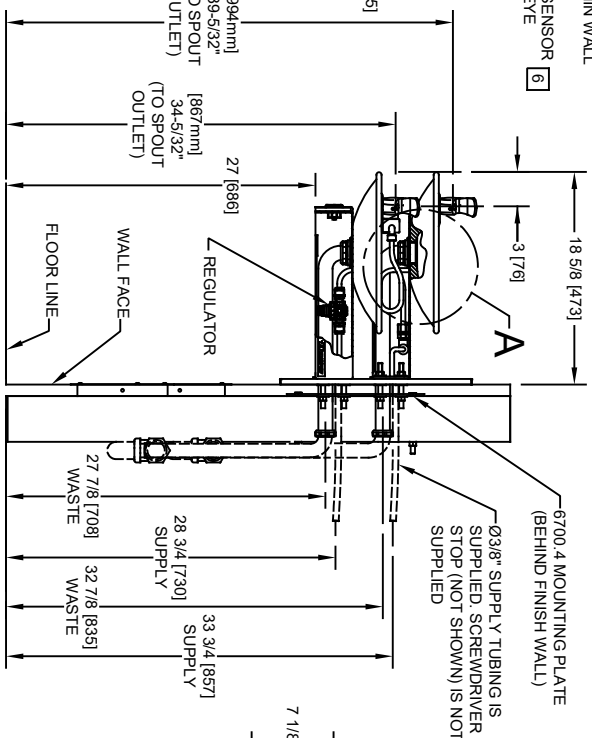
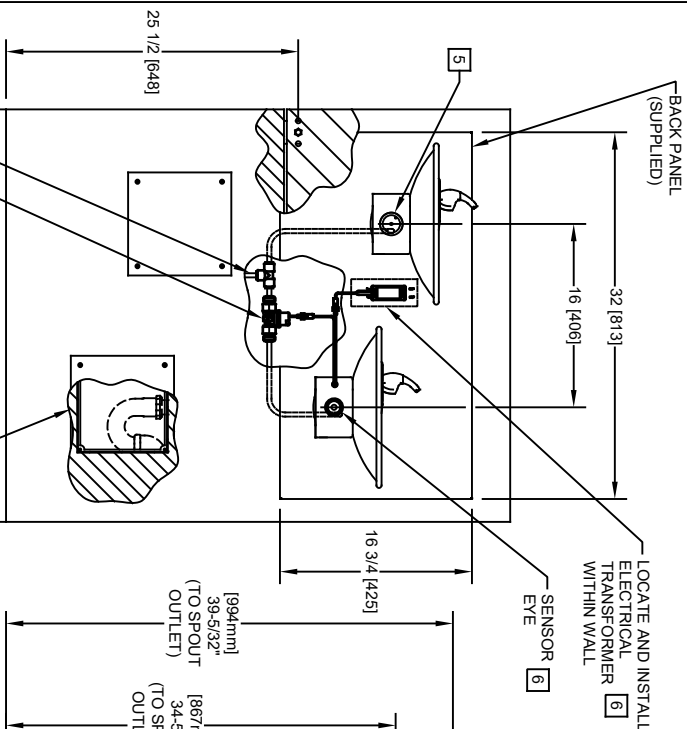
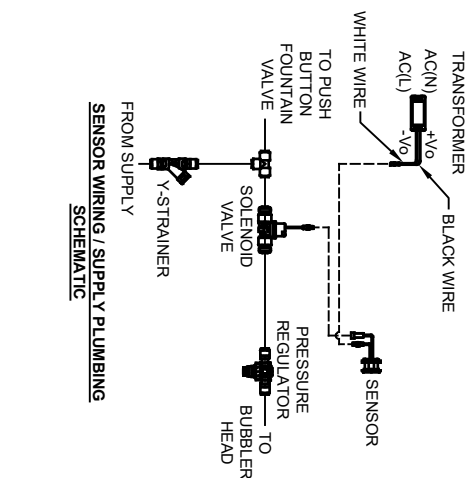
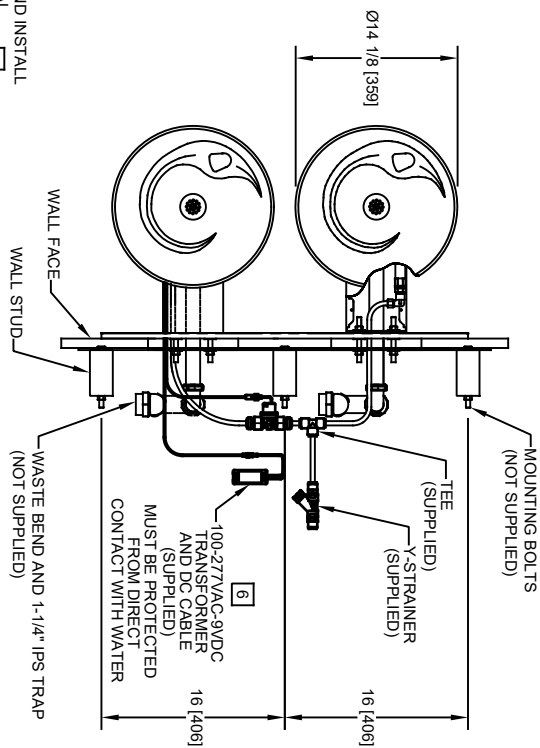
Model 1011HPSHO2-1920HPSHO ADA vandal-resistant wall mounted motion-activated drinking fountain and bottle filler shall include dual 18 gauge Type 304 high-polished stainless steel basins with integral swirl design, 14 gauge Type 304 high-polished stainless steel wall brackets and bottle filler bracket, 100% lead-free waterways, touchless sensor operated stainless steel solenoid valves with 30-second obstruction time-out controlled by a transformer, 1 gpm (3.78 L) bottle filler laminar flow, polished chrome-plated brass vandal-resistant bubbler heads with integral laminar anti-squirt flow, chrome-plated brass vandal-resistant waste strainers, vandal-resistant bottom plates, polished stainless steel back panels, high and low fountain mounting levels, and 1-1/4" O.D. (3.2 cm) waste pipes. (P-trap and stop require rear access) Manufactured to be lead-free by all known definitions including NSF/ ANSI/CAN 61-Section 9, NSF/ANSI/CAN 372, California Proposition 65, and the Federal Safe Drinking Water Act. Product is compliant to California Health and Safety Code 116875 (AB 1953-2006), and 116876 (AB 100) "NSF/ANSI/CAN 61: Q ≤ 1".

The bottle filler requires a mounting plate; either the Haws model 6700 in-wall or the 6700R on-wall support plate.



NOTES:

1. HOLD ROUGH-IN DIMENSIONS $\pm 1/8"$ (3.2mm).
2. WHEN INSTALLING THIS UNIT, LOCAL, STATE, OR FEDERAL CODES SHOULD BE ADHERED TO FOR INSTALLATION DIMENSIONS (LOCATIONS), WASTE AND SUPPLY REQUIREMENTS OTHER THAN SHOWN.
3. INSTALLER MUST PROVIDE TRAP FOR PROPER INSTALLATION.
4. REMOVE VALVE FROM PUSH BUTTON TO INSTALL WASTE ELBOW ONTO BOWL. AFTER WASTE ELBOW IS INSTALLED, REINSTALL VALVE AND ADJUST FLOW.
5. REFER TO 5874 SERIES OPERATION AND MAINTENANCE MANUAL FOR PUSH BUTTON AND VALVE INSTALLATION/MAINTENANCE INSTRUCTIONS.
6. REFER TO 1RKH0.H & 2RKH0.H OPERATION AND MAINTENANCE INSTRUCTIONS FOR TRANSFORMER AND SENSOR SETUP.



6700.4 MOUNTING PLATE
MUST BE INSTALLED BEFORE FINISH WORK.
THIS PLATE IS REQUIRED - SOLD SEPARATELY.

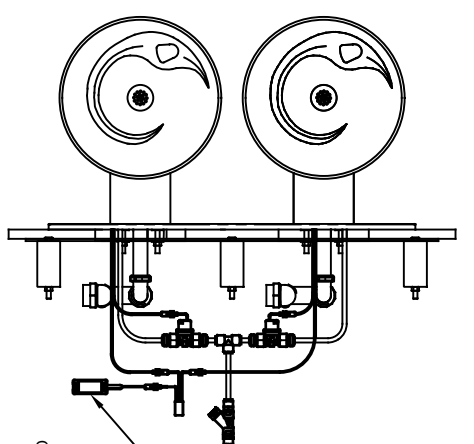
MODEL 1011HO/1011HPSHO SHOWN
 MODEL 1011HO2/1011HPSHO2 ON SHEET 2
 (ROUGH-IN DIMENSIONS APPLY TO ALL 4 MODELS)

Haws

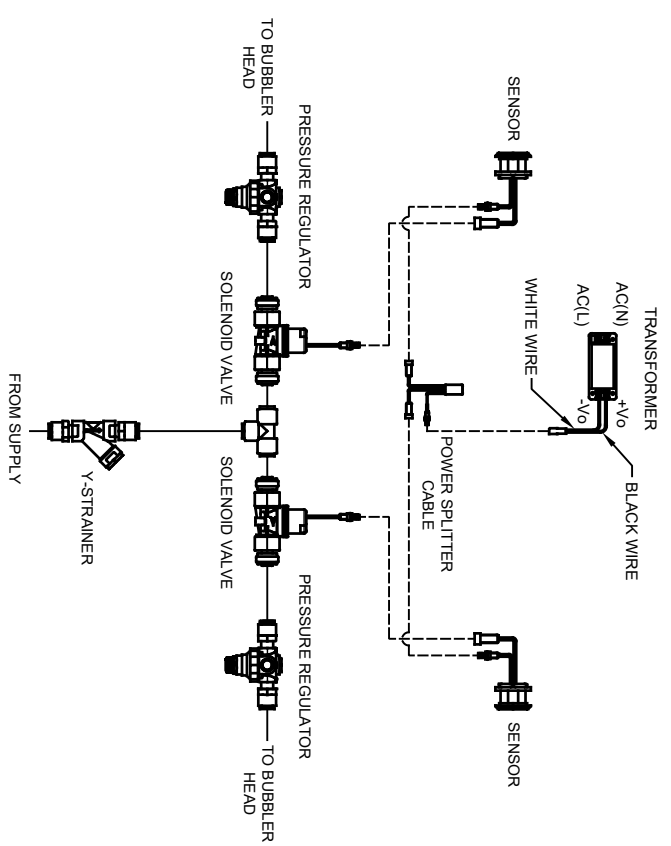
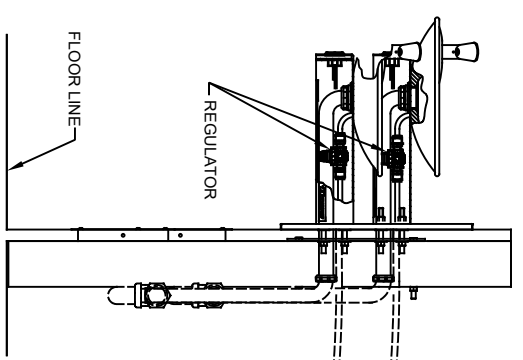
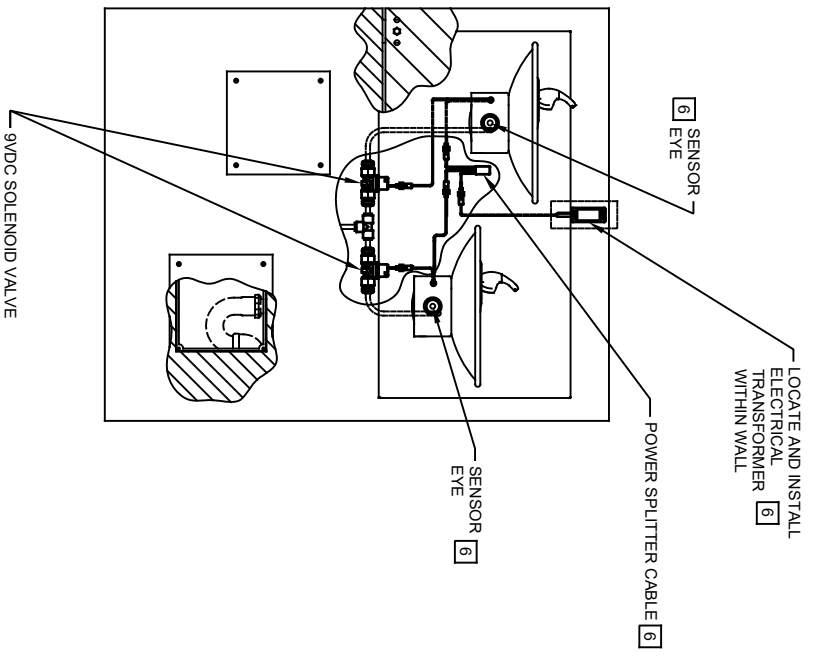
1456 KLEPPE LANE
 SPARKS, NEVADA, 89431
 (775) 359-4712 FAX (775) 359-7424
 E-MAIL: HAWS@HAWSCO.COM
 WEBSITE: WWW.HAWSCO.COM

ECN NO. REVISED PERBY: MODEL(S)
 5579 ECN.5978 DP 1011HO/1011HO2/1011HPSHO/1011HPSHO2
 DRAWN: DATE: CHKD:
 FV (09/15/20) FV
 APPROVED: DATE: SCALE: 1:1 DRAWING TYPE: INSTALLATION SHEET 1 OF 2
 BIM 04/23/21

PART NUMBER: 0510001066.D
 REVISION: 2



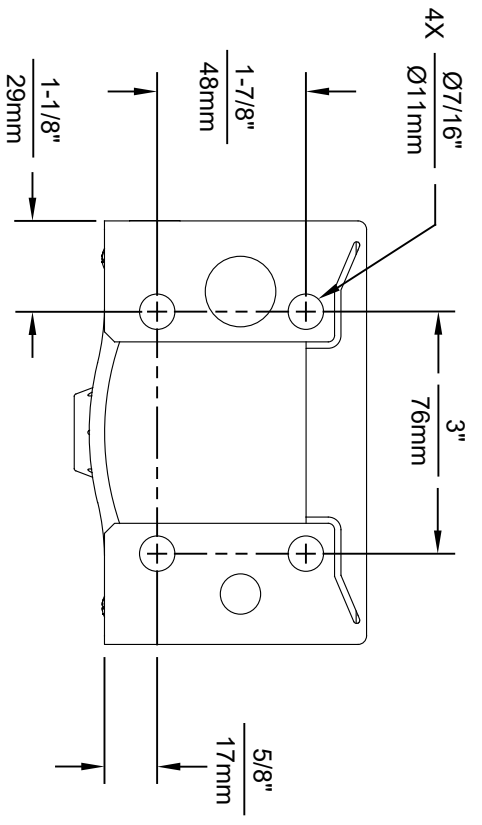
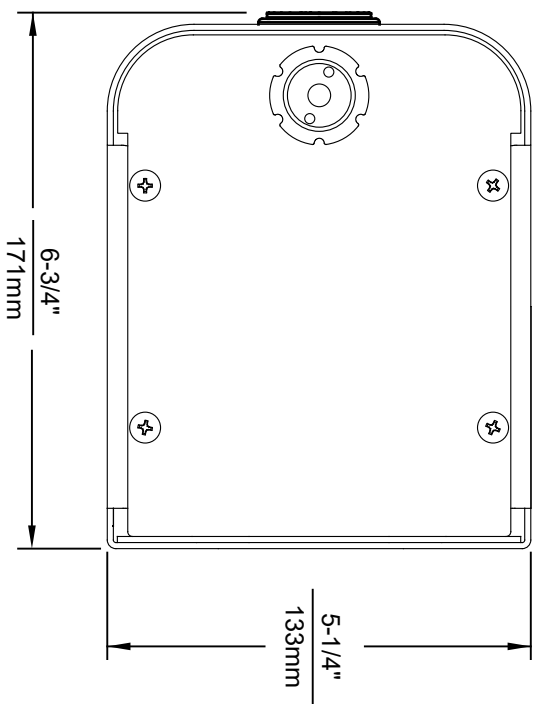
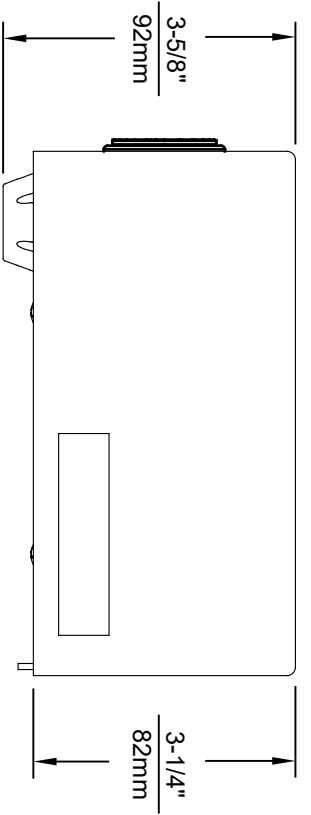
100-277VAC 9VDC TRANSFORMER AND HO CABLE (SUPPLIED) MUST BE PROTECTED FROM DIRECT CONTACT WITH WATER [6]



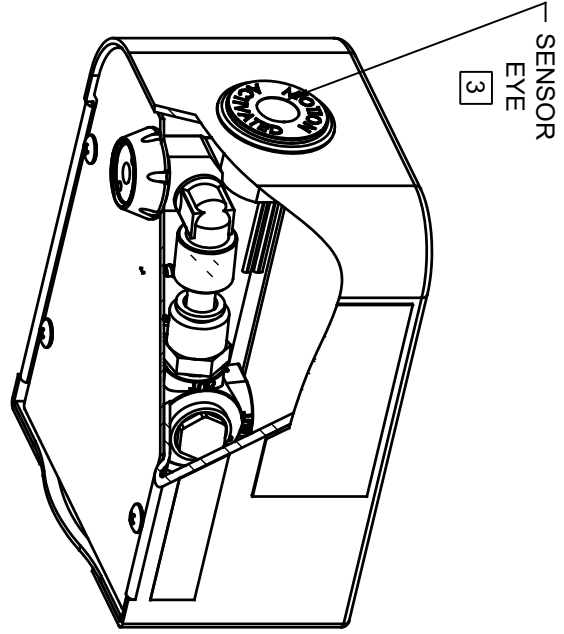
SENSOR WIRING / SUPPLY PLUMBING SCHEMATIC

MODEL 1011HO2/1011HPSHO2 SHOWN
 MODEL 1011HO/1011HPSHO ON SHEET 1
 (SEE SHEET 1 FOR APPLICABLE ROUGH-IN DIMENSIONS)

		Haws	
1456 KLEPPE LANE SPARKS, NEVADA, 89431 (775) 359-4712 FAX (775) 359-7424 E-MAIL: HAWS@HAWSCO.COM WEBSITE: WWW.HAWSCO.COM		MODEL(S) 1011HO/1011HO2/1011HPSHO/1011HPSHO2	
ECN NO. REVISED PERBY: 5579 ECN.5978 DP	DATE: 09/15/20	DATE: 09/15/20	CHKD: FV
DRAWN: FV	DATE: 04/23/21	SCALE: 1:1	DRAWING TYPE: INSTALLATION
APPROVED: BJM	DATE: 04/23/21	SCALE: 1:1	DRAWING TYPE: INSTALLATION
PART NUMBER 0510001066.D		REVISION 2	





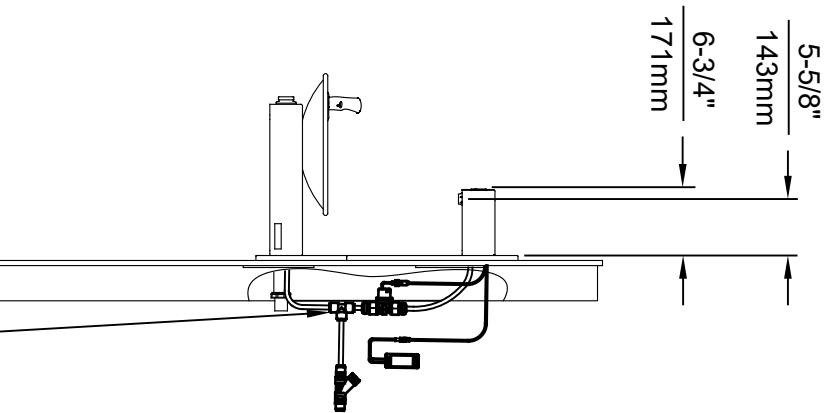
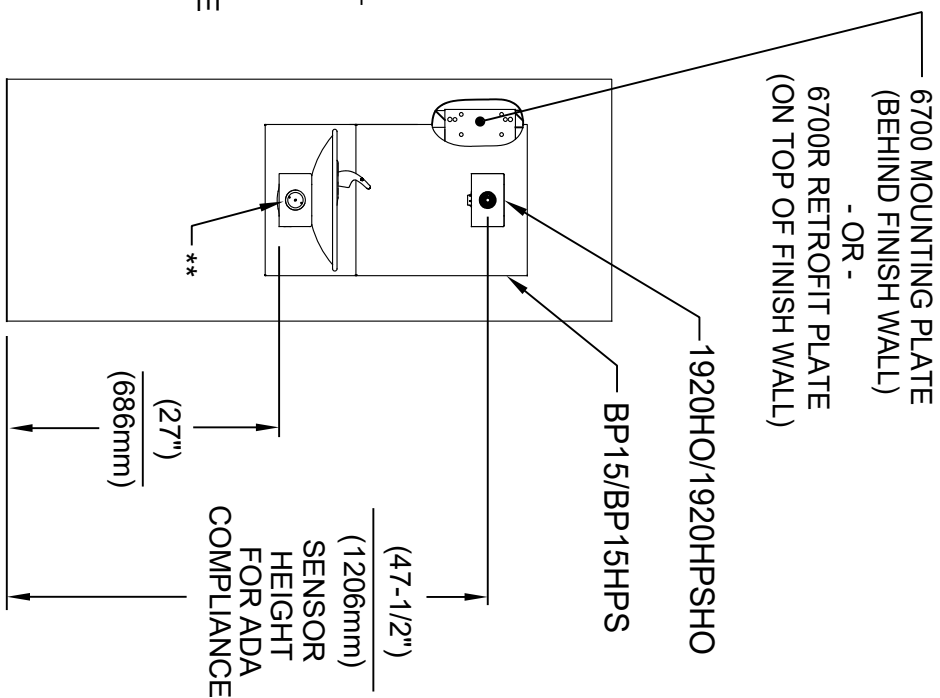
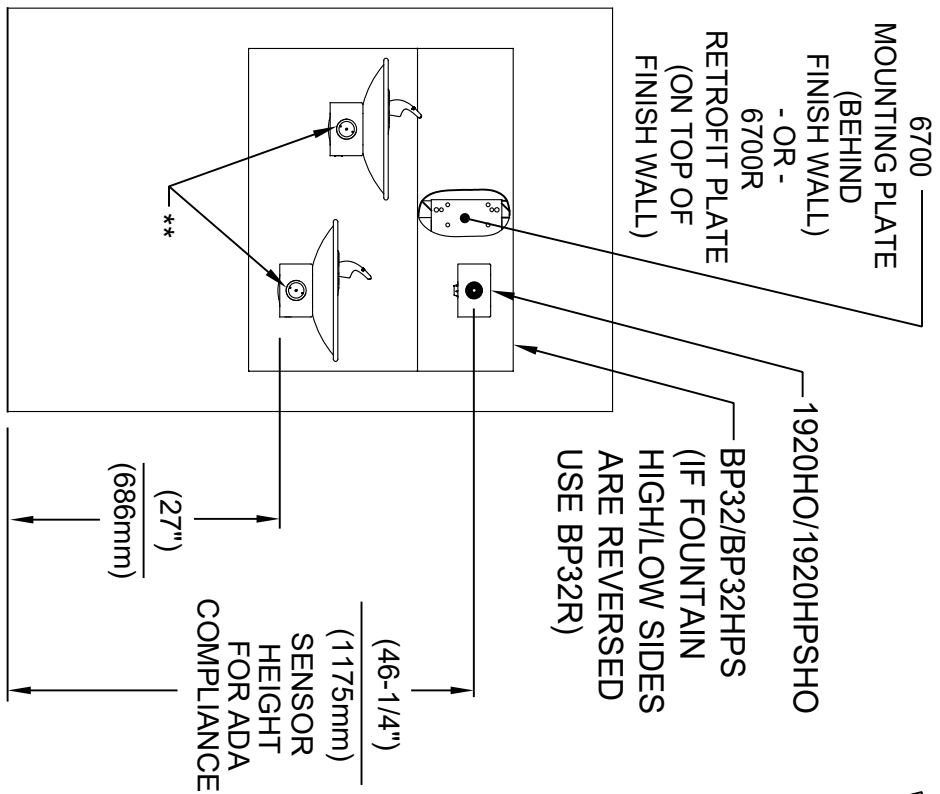
1920HO SERIES MOUNTING HOLE LOCATIONS
(3/8\"-16 UNC MOUNTING HARDWARE NOT SUPPLIED)



NOTES:

1. SEE SEPARATE INSTALLATION DRAWINGS FOR MOUNTING PLATES AND BACKPANELS
2. WHEN INSTALLING THIS UNIT, LOCAL, STATE OR FEDERAL CODES SHOULD BE ADHERED TO FOR INSTALLATION LOCATIONS, WASTE AND SUPPLY REQUIREMENTS OTHER THAN SHOWN.
3. REFER TO 1RKHO.H OPERATION & MAINTENANCE INSTRUCTIONS FOR SENSOR SETUP.

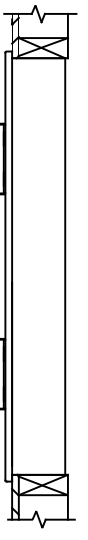
				1459 KLEPPE LANE SPARKS, NEVADA, 89431 (775) 359-4712 FAX (775) 359-7424 E-MAIL: HAWS@HAWSCO.COM WEBSITE: WWW.HAWSCO.COM	
ECN NO. REVISED PERBY:	MODEL(S)	1920HO/1920HPPSHO/1920WHO			
5574 ECN:5744 FV					
DATE: 08/18/20	CHKD: BMM				
APPROVED: FV	DATE: 10/1/21	SCALE: N/A	DRAWING TYPE:	INSTALLATION	SIZE: A
					SHEET 1 OF 7
					REVISION: 5
					PART NUMBER: 0510001063.D



INSTALLATION ABOVE HAWS 1011 & H1011.8 SERIES

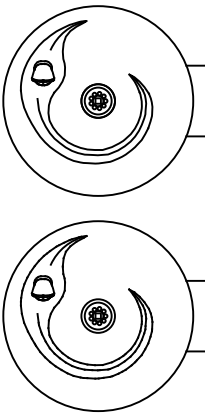
INSTALLATION ABOVE HAWS 1001 & H1001.8 SERIES

* IF YOUR FOUNTAIN IS THIS STYLE USE THESE DIMENSIONS



1. SEE SEPARATE INSTALLATION DRAWINGS FOR MOUNTING PLATES AND BACKPANELS

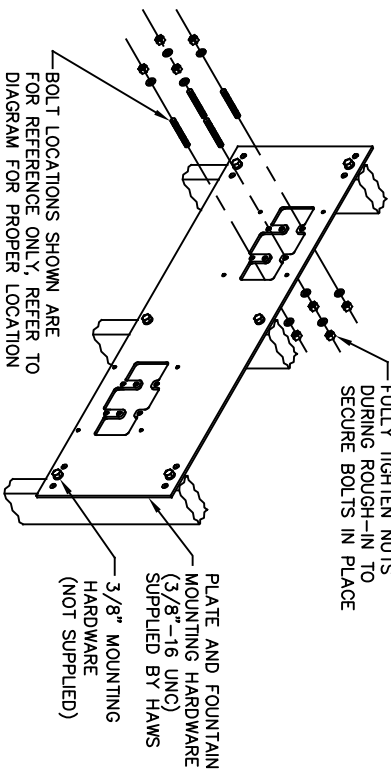
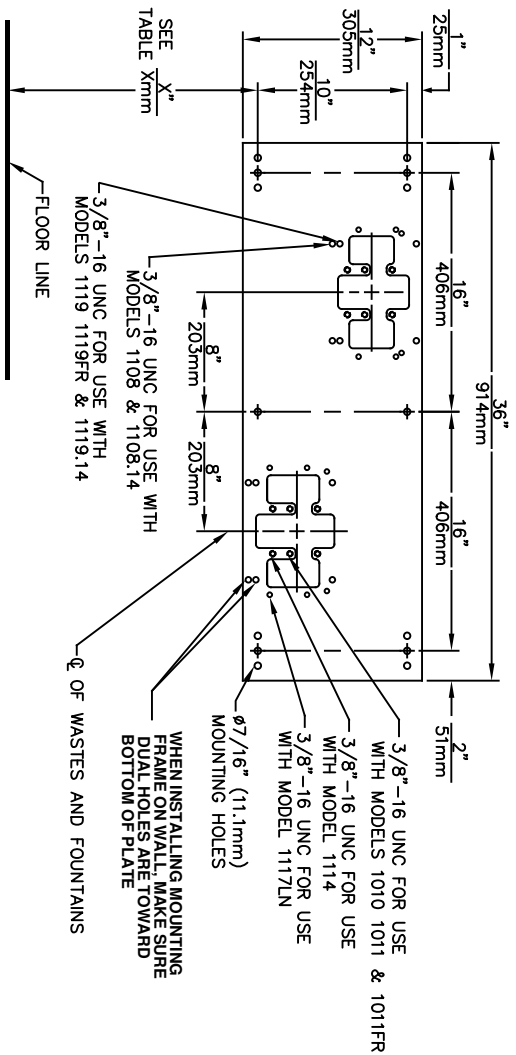
2. WHEN INSTALLING THIS UNIT, LOCAL, STATE OR FEDERAL CODES SHOULD BE ADHERED TO FOR INSTALLATION LOCATIONS, WASTE & SUPPLY REQUIREMENTS OTHER THAN SHOWN.



** EXISTING PUSH BUTTON ASSEMBLY SHOWN, CAN BE CONVERTED TO HANDS OFF STYLE, USING RETRO-FIT KIT MODEL 1RKHO.H OR 2RKHO.H DEPENDING ON CUSTOMER REQUIREMENTS.

3/8" O.D. SUPPLY TUBING AND 3/8" O.D. PUSH-IN TEE SUPPLIED. (CONNECT TO FOUNTAIN SUPPLY LINE)

		Haws	
1459 KLEPPE LANE SPARKS, NEVADA 89431 (775) 359-4712 FAX (775) 359-7424 E-MAIL: HAWS@HAWSCO.COM WEBSITE: WWW.HAWSCO.COM		MODEL(S) 1920HO/1920HPSHO/1920WHO	
ECN NO. REVISED PER BY: 5574 EON: 5744 FV	DATE: 08/18/20 BLM	DATE: 10/1/21	SCALE: N/A
APPROVED: FV	DATE: 10/1/21	SCALE: N/A	DRAWING TYPE: INSTALLATION
PART NUMBER 0510001063.D		REVISION: 5	SHEET 2 OF 7



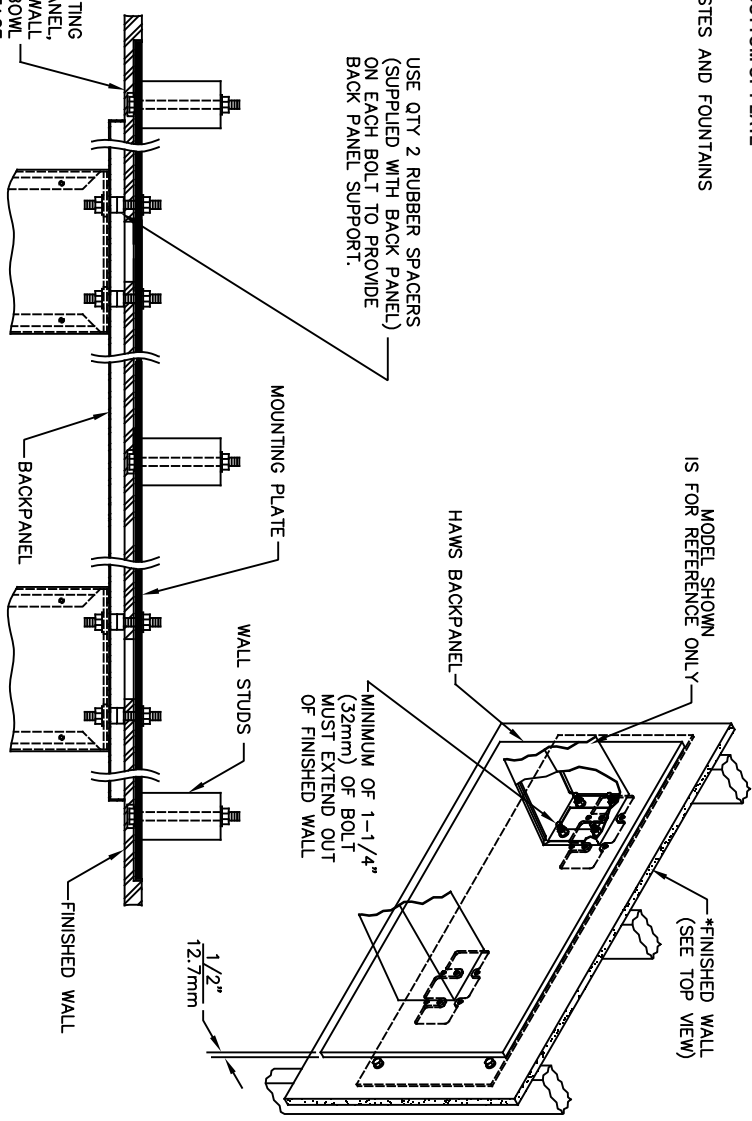
*FINISH WALL OVER MOUNTING PLATE AND BEHIND BACKPANEL, MAKE SURE THAT FINISHED WALL EXTENDS WITHIN THE BRACKET/BOWL MOUNTING HOLES (TO PROVIDE SURFACE AREA FOR RUBBER SPACERS TO CONTACT).

CAUTION

REGARDING CONCRETE/MASONRY WALL MOUNTING-DO NOT SECURE MOUNTING PLATE TO SAME SIDE OF WALL AS FOUNTAIN. AVOID COMPROMISING INTEGRITY OF WALL WHEN ANCHORING FOUNTAIN. IT IS RECOMMENDED THAT INSTALLER CALL TECHNICAL SUPPORT IF THERE ARE ANY QUESTIONS AS TO HOW TO OBTAIN A PROPER ANCHOR IN CONCRETE/MASONRY WALLS. 1-800-766-5612

DIMENSION	1011	MODEL
"X"	25-1/2" [646mm]	
LOWER SUPPLY	28-3/4" [730mm]	
LOWER WASTE	27-7/8" [708mm]	
UPPER SUPPLY	33-3/4" [857mm]	
UPPER WASTE	32-7/8" [835mm]	
DIMENSION	1119	MODEL
"X"	27-5/8" [702mm]	1119, 14
LOWER SUPPLY	29-5/8" [752mm]	
LOWER WASTE	30-3/4" [781mm]	
UPPER SUPPLY	35-3/8" [905mm]	
UPPER WASTE	36-1/2" [927mm]	
DIMENSION	1011FR	MODEL
"X"	25-1/2" [646mm]	1119FR
SUPPLY WASTE	SEE FREEZE VALVE ROUGH-IN	SEE FREEZE VALVE ROUGH-IN

DIMENSION	1117LN	MODEL
"X"	27" [686mm]	
LOWER SUPPLY	29-1/2" [749mm]	
LOWER WASTE	29-1/4" [743mm]	
UPPER SUPPLY	35-1/2" [902mm]	
UPPER WASTE	35-1/4" [895mm]	



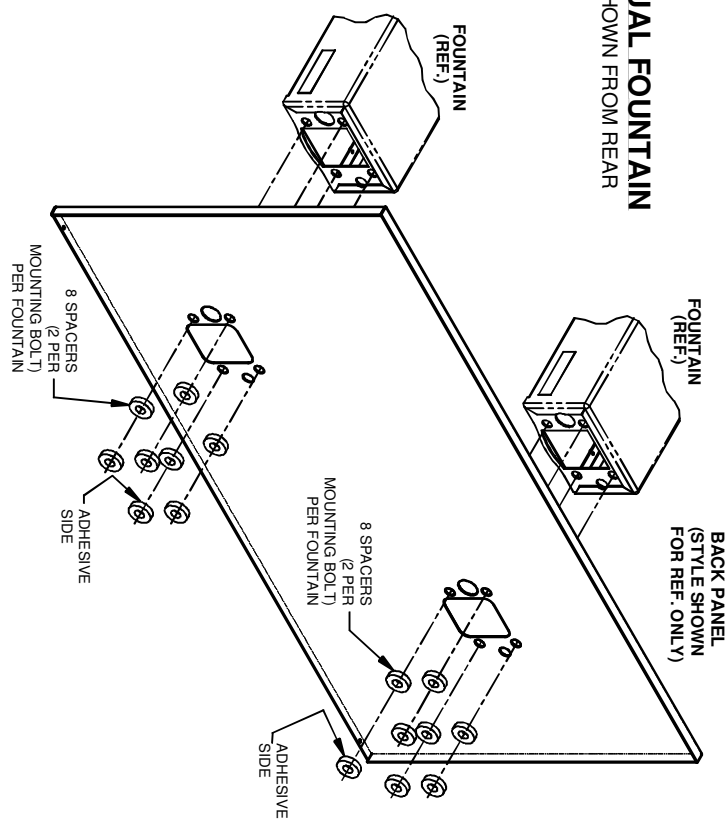
TOP VIEW

1456 KLEPPE LANE
SPARKS, NEVADA 89431
(775) 359-4712 FAX (775) 359-7424
E-MAIL: HAWES@HAWESCO.COM
WEBSITE: WWW.HAWESCO.COM

ECN NO. REVISED PER: BY: MODEL(S)	6700.4
ECN: 5226	FW
DATE: 04/29/93	CHKD: DP
DATE: 04/13/20	SCALE: N/A
APPROVED: FV	DRAWING TYPE: INSTALLATION
SIZE: A	SHEET: 1 OF 1
REVISION: 18	

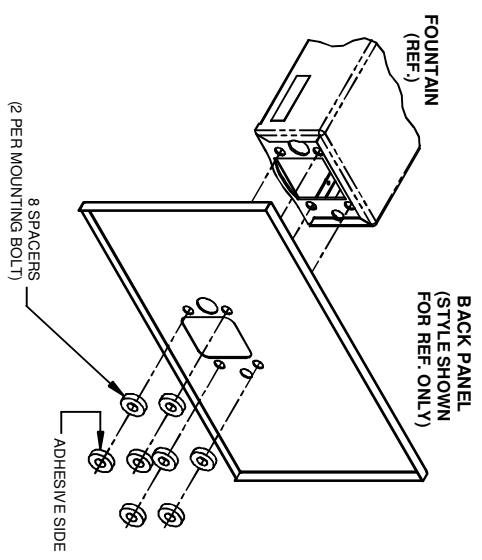
DUAL FOUNTAIN

SHOWN FROM REAR



SINGLE FOUNTAIN

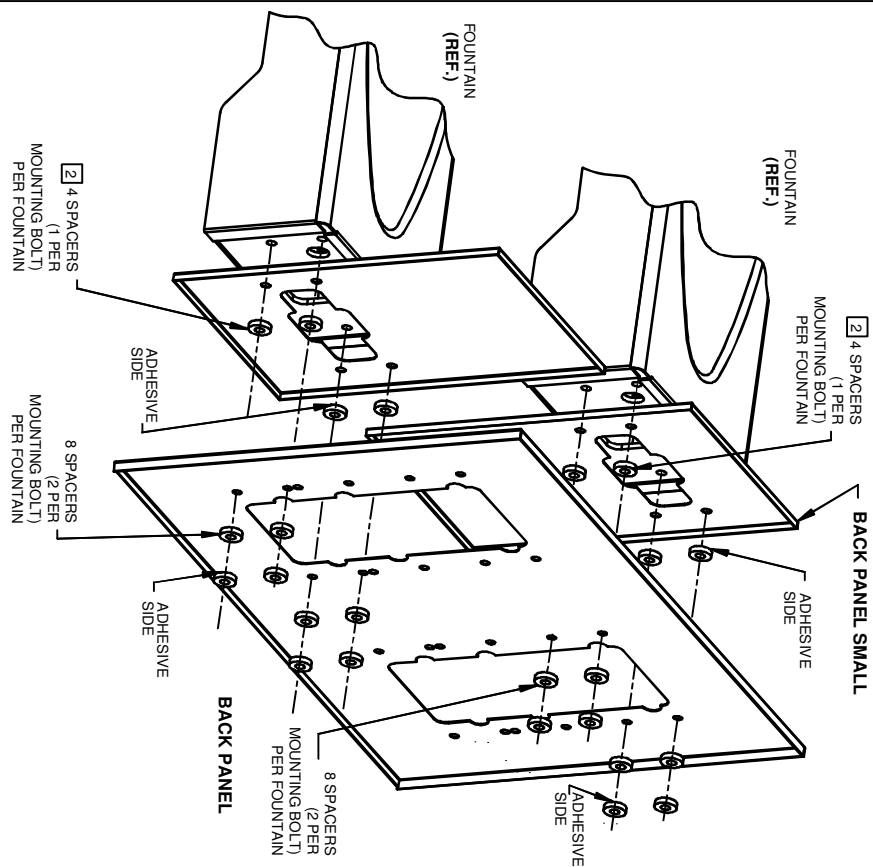
SHOWN FROM REAR



- NOTES:**
- 1 ON ALL BACK PANEL MODELS, SPACERS ARE NOT USED WHEN A MOUNTING FRAME IS USED EXCEPT AS SPECIFIED IN NOTE 2
 - 2 INDICATED SPACERS ARE USED WITH MOUNTING FRAME (DUAL ADJUSTABLE)

DUAL FOUNTAIN ADJUSTABLE

SHOWN FROM REAR



		MODELS(S)	
EGN NO. REVISED PERI BY:	EGN. 4595	BACK PANEL	
DRAWN: CHKD:	DATE: 10/28/92	SPACER INSTRUCTIONS	
APPROVED:	DATE:	INSTALLATION	
SCALE: 1:10		SIZE: A	SHEET 1 OF 1
1455 KLEPPE LANE		PART NUMBER	
SPARKS, NEVADA 89431		0002082219	
(775) 359-4712 FAX (755) 359-7424		DRAWING NO. REF	
E-MAIL: HAWS@HAWSCO.COM		08292001 5	
WEBSITE: WWW.HAWSCO.COM			