

## FEATURES & BENEFITS

### CONSTRUCTION

Rugged ADA accessible 18 gauge Type 304 Stainless Steel swirl design bowls, 14 gauge Type 304 Stainless Steel brackets, and a vandal-resistant bottom plate provides a long lasting unit with added peace of mind.

### BOTTLE FILLER

14-gauge Type 304 stainless steel bottle filler housing with touchless operation and 1 gpm (3.78 L) laminar flow with 30-second obstruction time-out.

### VANDAL RESISTANT

The bubbler heads, sensors, round bowls, drain strainers and bottom plates are locked in place, discouraging unwanted vandal tampering, and 30-second obstruction time-out to reduce tampering of sensors.

### BUBBLER HEADS

Polished chrome-plated brass bubbler heads with integral laminar flow prevents splashing while providing a superior flow pattern. The integral 11/16" dia. basin shank and stainless anti-rotation roll pin for vandal resistance strength. Shielded, angled stream opening provides a steady source of drinking water at .45 gpm.

### FOUNTAIN VALVES

Fountain incorporates touchless sensor operated stainless steel solenoid valves controlled by a transformer for hands-free operation. A pressure regulator is used to adjust the bubbler flow according to incoming water pressures.

### MOUNTING

3/16" (.47 cm) thick steel mounting plates are larger, thicker and stronger than any other plate in the industry, and shall include the all-thread studs, nuts, and washers which allows for easy installation to a framed wall.

## OPTIONS

- Water Filter: Model 6480 filter kit with 3000 gallon carbon block filter, filter head, and mounting bracket.
- Support Frame: Model 6800 universal in-wall mounting support for use with most fountains.
- Mounting Plate: Model 6700R, on-wall mounting plate for model 1920.

For more information, visit [www.hawesco.com](http://www.hawesco.com) or call (888) 640-4297.



## SPECIFICATIONS

### 1011HO2 / 6700.4 / 1920HO / 6700 / BP32

Order these items to make up Model 1011HO2-1920HO fountain with stainless steel back panel, bottle filler with stainless steel back plate, and fountain mounting plates shown above.

### FOR INDOOR USE ONLY

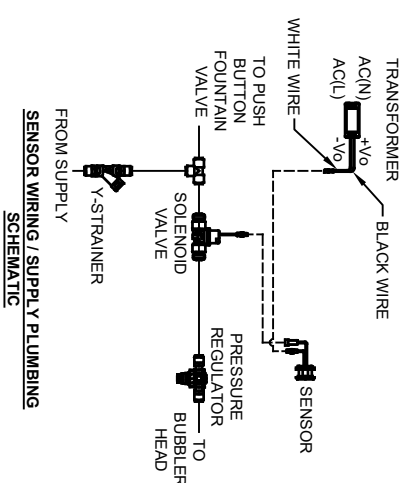
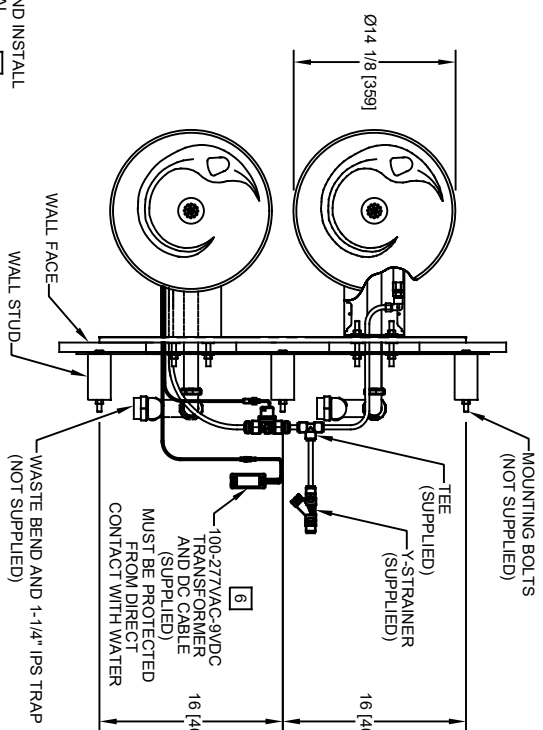
## APPLICATIONS

Model 1011HO2-1920HO ADA wall mounted motion-activated vandal-resistant drinking fountain and bottle filler shall include dual 18 gauge Type 304 Stainless Steel satin finish basins with integral swirl design, 14 gauge Type 304 Stainless Steel wall brackets and bottle filler bracket, 3/16" (.47 cm) thick steel mounting plates for fountain and bottle filler, 100% lead-free waterways, touchless sensor operated stainless steel solenoid valves with 30-second obstruction time-out controlled by a transformer, 1 gpm (3.78 L) bottle filler laminar flow, polished chrome-plated brass vandal-resistant bubbler heads with integral laminar anti-squirt flow, chrome-plated brass vandal-resistant waste strainers, vandal-resistant bottom plates, stainless steel satin finish back panel, high and low fountain mounting levels, and 1-1/4" O.D. (3.2 cm) waste pipes. (P-trap and stop require rear access) Manufactured to be lead-free by all known definitions including NSF/ ANSI/CAN 61-Section 9, NSF/ANSI/ CAN 372, California Proposition 65, and the Federal Safe Drinking Water Act. Product is compliant to California Health and Safety Code 116875 (AB 1953-2006), and 116876 (AB 100) "NSF/ANSI/CAN 61: Q ≤ 1".

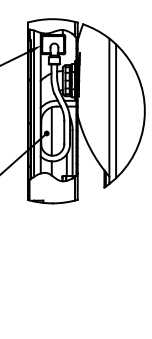


NOTES:

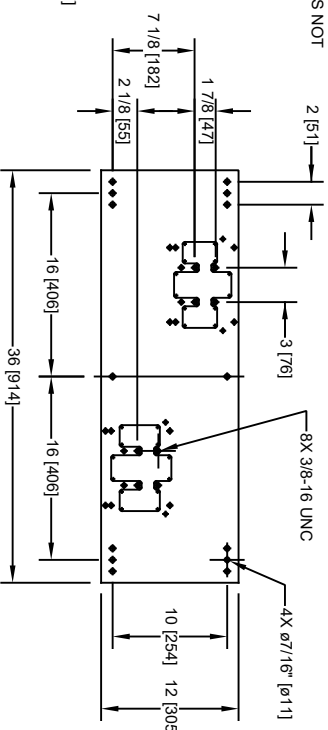
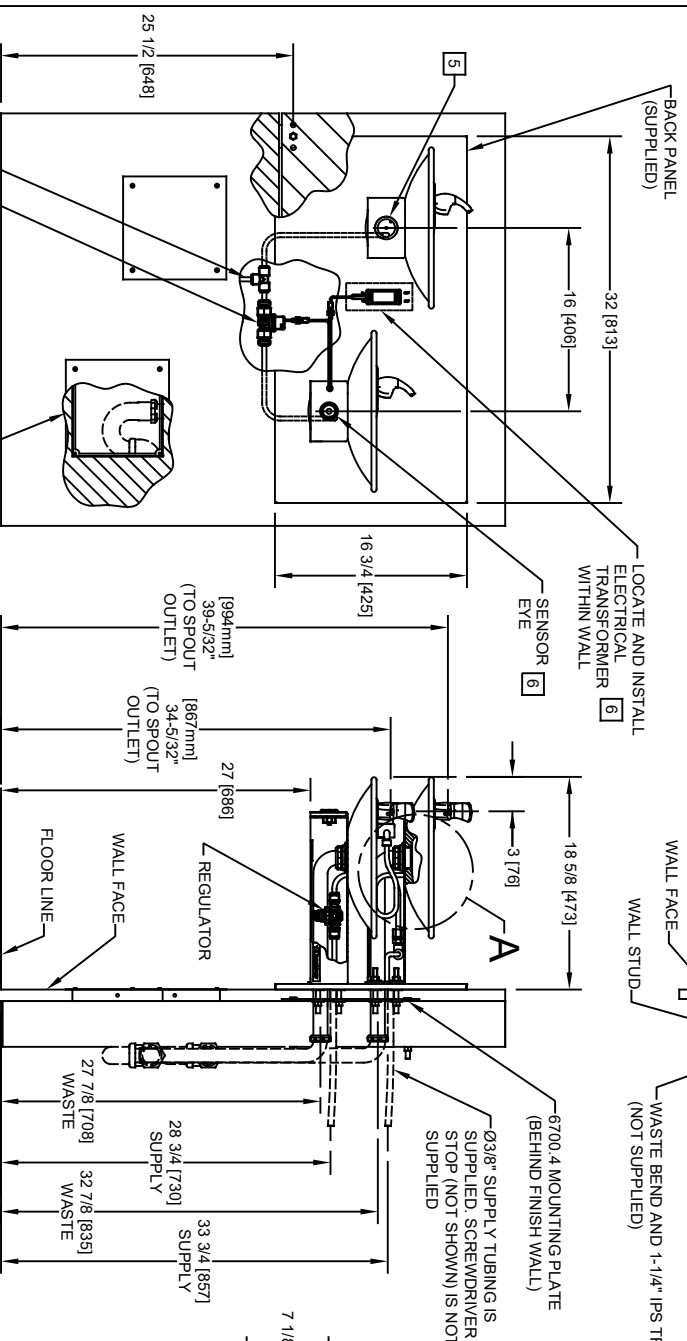
1. HOLD ROUGH-IN DIMENSIONS  $\pm 1/8"$  (3.2mm).
2. WHEN INSTALLING THIS UNIT, LOCAL, STATE, OR FEDERAL CODES SHOULD BE ADHERED TO FOR INSTALLATION DIMENSIONS (LOCATIONS), WASTE AND SUPPLY REQUIREMENTS OTHER THAN SHOWN.
3. INSTALLER MUST PROVIDE TRAP FOR PROPER INSTALLATION.
4. REMOVE VALVE FROM PUSH BUTTON TO INSTALL WASTE ELBOW ONTO BOWL. AFTER WASTE ELBOW IS INSTALLED, REINSTALL VALVE AND ADJUST FLOW.
5. REFER TO 5874 SERIES OPERATION AND MAINTENANCE MANUAL FOR PUSH BUTTON AND VALVE INSTALLATION/MAINTENANCE INSTRUCTIONS.
6. REFER TO 1RKHO-H & 2RKHO-H OPERATION AND MAINTENANCE INSTRUCTIONS FOR TRANSFORMER AND SENSOR SETUP.



SENSOR WIRING / SUPPLY PLUMBING SCHEMATIC



DETAIL A  
1-1/4" O.D. WASTE BEND [3]  
(SUPPLIED)



**6700.4 MOUNTING PLATE**  
**MUST BE INSTALLED BEFORE FINISH WORK.**  
**THIS PLATE IS REQUIRED - SOLD SEPARATELY.**

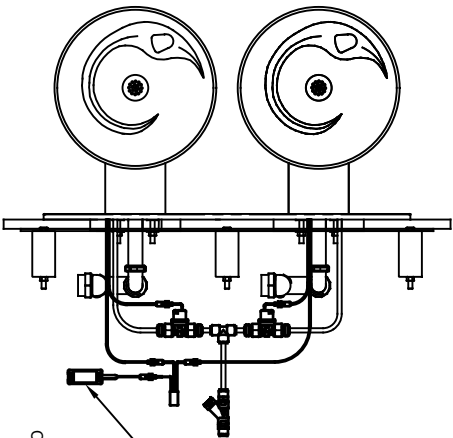
MODEL 1011HO/1011HPSHO SHOWN  
MODEL 1011HO2/1011HPSHO2 ON SHEET 2  
(ROUGH-IN DIMENSIONS APPLY TO ALL 4 MODELS)



**Haws**

1456 KLEPPE LANE  
SPARKS, NEVADA 89431  
(775) 359-4712 FAX (775) 359-7424  
E-MAIL: HAWS@HAWS.CO.COM  
WEBSITE: WWW.HAWS.CO.COM

ECN NO. REVISED PERBY:	MODEL(S)
5579	1011HO/1011HO2/1011HPSHO/1011HPSHO2
DRAWN: DATE: CHKD:	
FV [09/15/20] FV	
APPROVED: DATE:	
RLM [04/23/21]	
SCALE: 1:1	DRAWING TYPE: INSTALLATION
SHEET 1 OF 2	
PART NUMBER	0510001066.D
REVISION	2



100-277VAC 9VDC  
TRANSFORMER  
AND HO CABLE  
(SUPPLIED)  
MUST BE PROTECTED  
FROM DIRECT  
CONTACT WITH WATER [6]

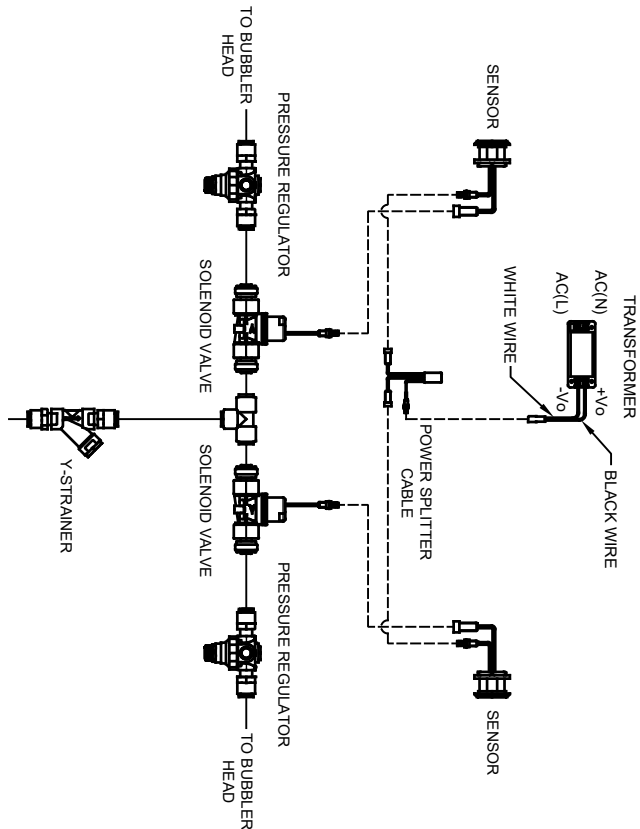
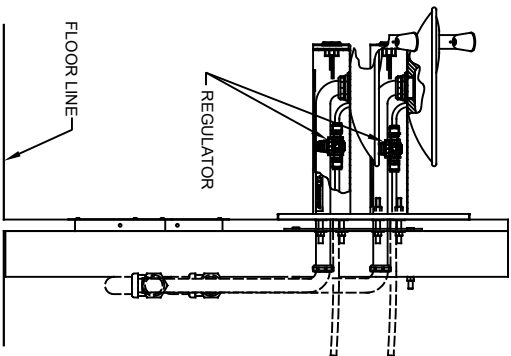
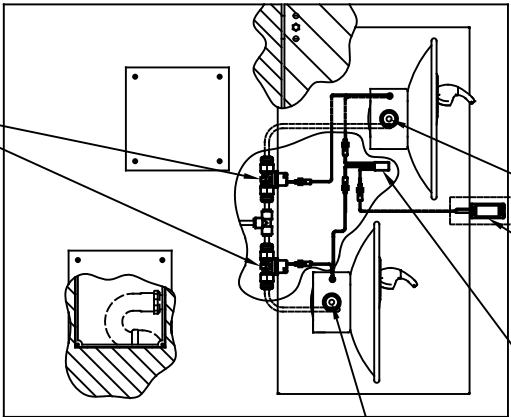
LOCATE AND INSTALL  
ELECTRICAL  
TRANSFORMER [6]  
WITHIN WALL

[6] SENSOR  
EYE

POWER SPLITTER CABLE [6]

SENSOR  
EYE [6]

9VDC SOLENOID VALVE



**SENSOR WIRING / SUPPLY PLUMBING  
SCHEMATIC**



**Haws**

1456 KLEPPE LANE

SPARKS, NEVADA 89431

(775) 359-4712 FAX (775) 359-7424

E-MAIL: HAWS@HAWS.CO.COM

WEBSITE: WWW.HAWS.CO.COM

PART NUMBER

0510001066.D

REVISION

2

MODEL(S)

1011HO/1011HO2/1011HPSHO/1011HPSHO2

ECN NO. REVISED PERBY:

5579 ECN. 5978 DP

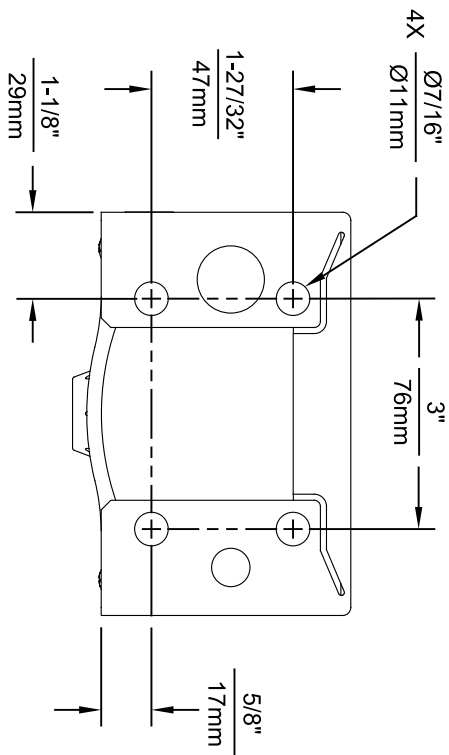
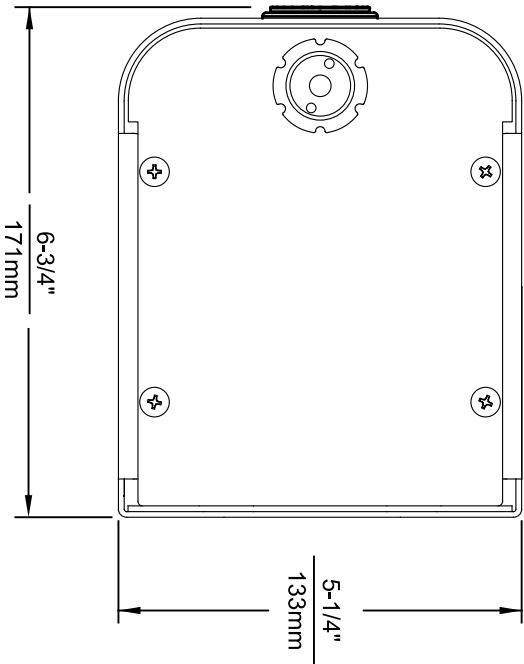
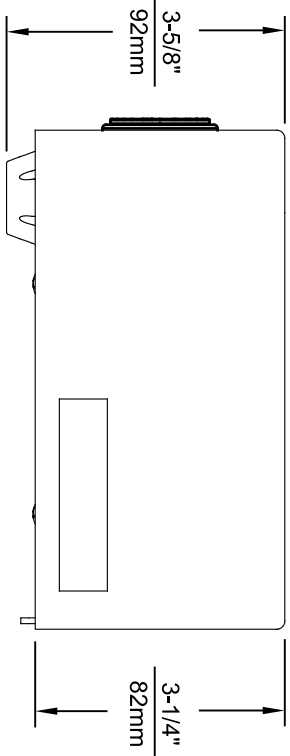
DRAWN: DATE: CHKD:

FV 09/15/20 FV

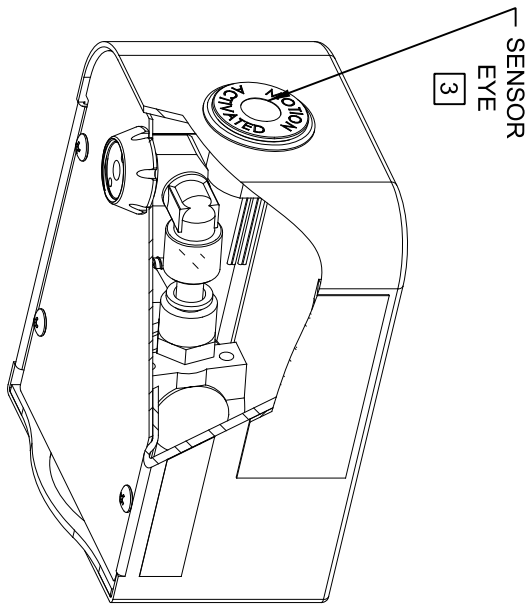
APPROVED: DATE: 04/23/21

BLM SCALE: 1:1 DRAWING TYPE: INSTALLATION

SIZE: A SHEET 2 OF 2




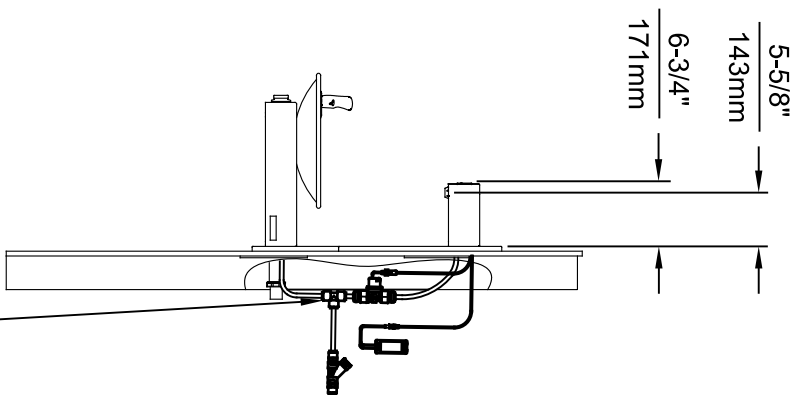
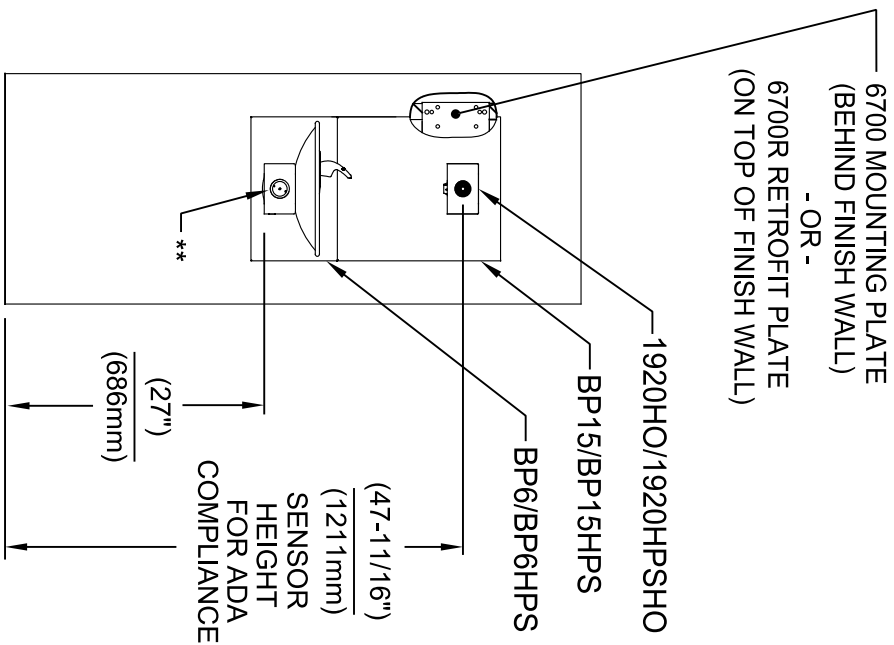
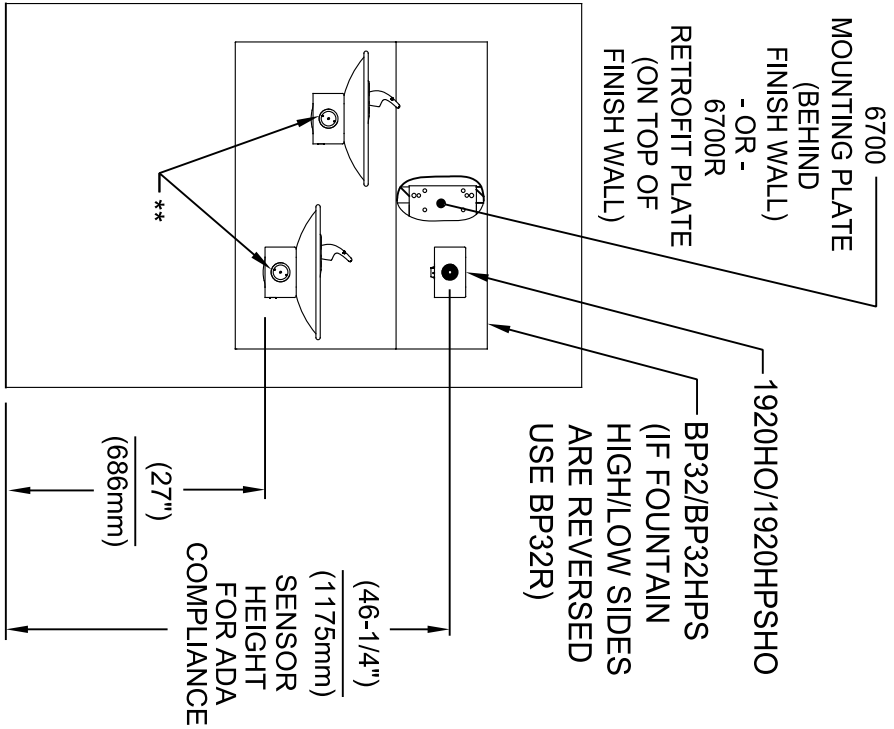
1920HO SERIES MOUNTING HOLE LOCATIONS  
(3/8"-16 UNC MOUNTING HARDWARE NOT SUPPLIED)



NOTES:

1. SEE SHEETS 2 THRU 7 FOR BOTTLE FILLER ADULT ADA HEIGHT APPLICATIONS AND SHEET 8 FOR CHILD ADA HEIGHT APPLICATIONS.
2. WHEN INSTALLING THIS UNIT, LOCAL, STATE OR FEDERAL CODES SHOULD BE ADHERED TO FOR INSTALLATION LOCATIONS, WASTE AND SUPPLY REQUIREMENTS OTHER THAN SHOWN.
- 3 REFER TO 1RKHO.H OPERATION & MAINTENANCE INSTRUCTIONS FOR SENSOR SETUP.

		1455 KLEPPLE LANE SPARKS, NE\ADA 689431 (775) 359-4712 FAX (775) 359-1424 E-MAIL: HAWS@HAWS.CO.COM WEBSITE: WWW.HAWS.CO.COM			
ECON. REVISED PERBY: FV		MODEL(S) 1920HO/1920HPSHO/1920WHO		PART NUMBER 0510001063.D	
DRAWN: FV		DATE: 08/18/20		REVISION 8	
APPROVED: FV		DATE: 11/04/24		SCALE: N/A	
DRAWING TYPE:		INSTALLATION		SIZE: A1 SHEET 1 OF 8	



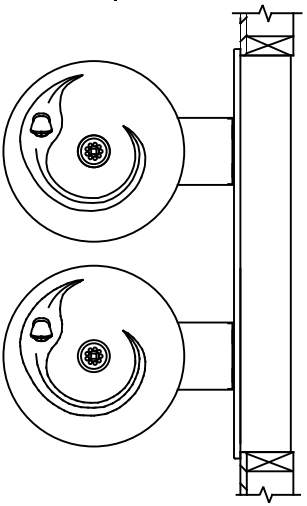
### INSTALLATION ABOVE HAWS 1011 & H1011.8 SERIES

### INSTALLATION ABOVE HAWS 1001 & H1001.8 SERIES

\* IF YOUR FOUNTAIN IS THIS STYLE USE THESE DIMENSIONS

1. SEE SEPARATE INSTALLATION DRAWINGS FOR MOUNTING PLATES AND BACK PANELS (SHOWN FOR REFERENCE - NOT SUPPLIED).

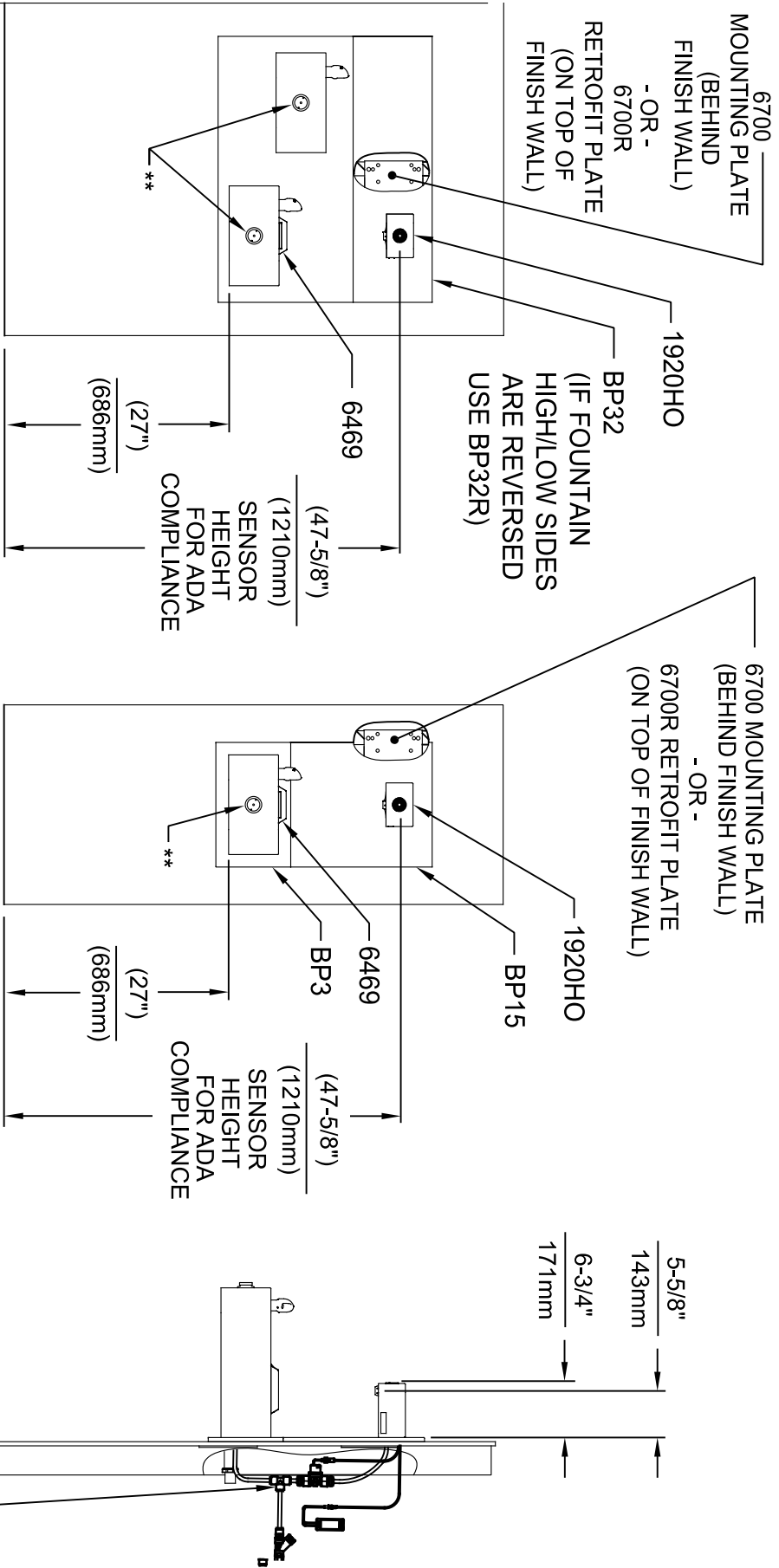
2. WHEN INSTALLING THIS UNIT, LOCAL, STATE OR FEDERAL CODES SHOULD BE ADHERED TO FOR INSTALLATION LOCATIONS, WASTE & SUPPLY REQUIREMENTS OTHER THAN SHOWN.



\*\* EXISTING PUSH BUTTON ASSEMBLY SHOWN, CAN BE CONVERTED TO HANDS OFF STYLE, USING RETRO-FIT KIT MODEL 1RKHO.H OR 2RKHO.H DEPENDING ON CUSTOMER REQUIREMENTS.

3/8" O.D. SUPPLY TUBING AND 3/8" O.D. PUSH-IN TEE SUPPLIED. (CONNECT TO FOUNTAIN SUPPLY LINE)

		1455 KLEPPLE LANE SPARKS, NE/VADA 89431 (775) 359-4712 FAX (775) 359-1424 E-MAIL: HAWS@HAWS.CO.COM WEBSITE: WWW.HAWS.CO.COM	
ECON. NO. REVISED PERBY:		MODEL(S)	
5574 / ECON. 6136		1920HO/1920HPSHO/1920WHO	
DRAWN: FV		PART NUMBER	
FV		0510001063.D	
DATE: 08/18/20		REVISION	
FV		8	
APPROVED: 11/04/24		INSTALLATION	
SCALE: N/A		SIZE: A1 SHEET 2 OF 8	
DRAWING TYPE:			



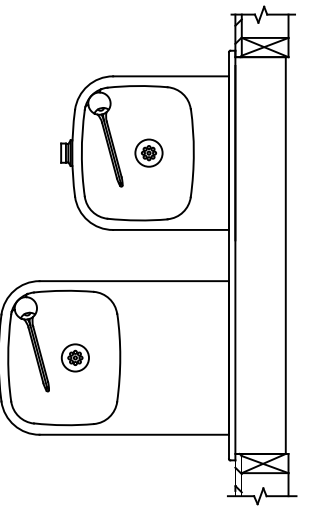
**INSTALLATION ABOVE HAWS 1119 & H1119.8 SERIES**

**INSTALLATION ABOVE HAWS 1109 & H1109.8 SERIES  
SEE SHEET 8 FOR INSTALLATION AT CHILD HEIGHT**

\* IF YOUR FOUNTAIN IS THIS STYLE USE  
THESE DIMENSIONS


1. SEE SEPARATE INSTALLATION DRAWINGS  
FOR MOUNTING PLATES, BACK PANELS  
AND DRIP TRAY (NOT SUPPLIED).

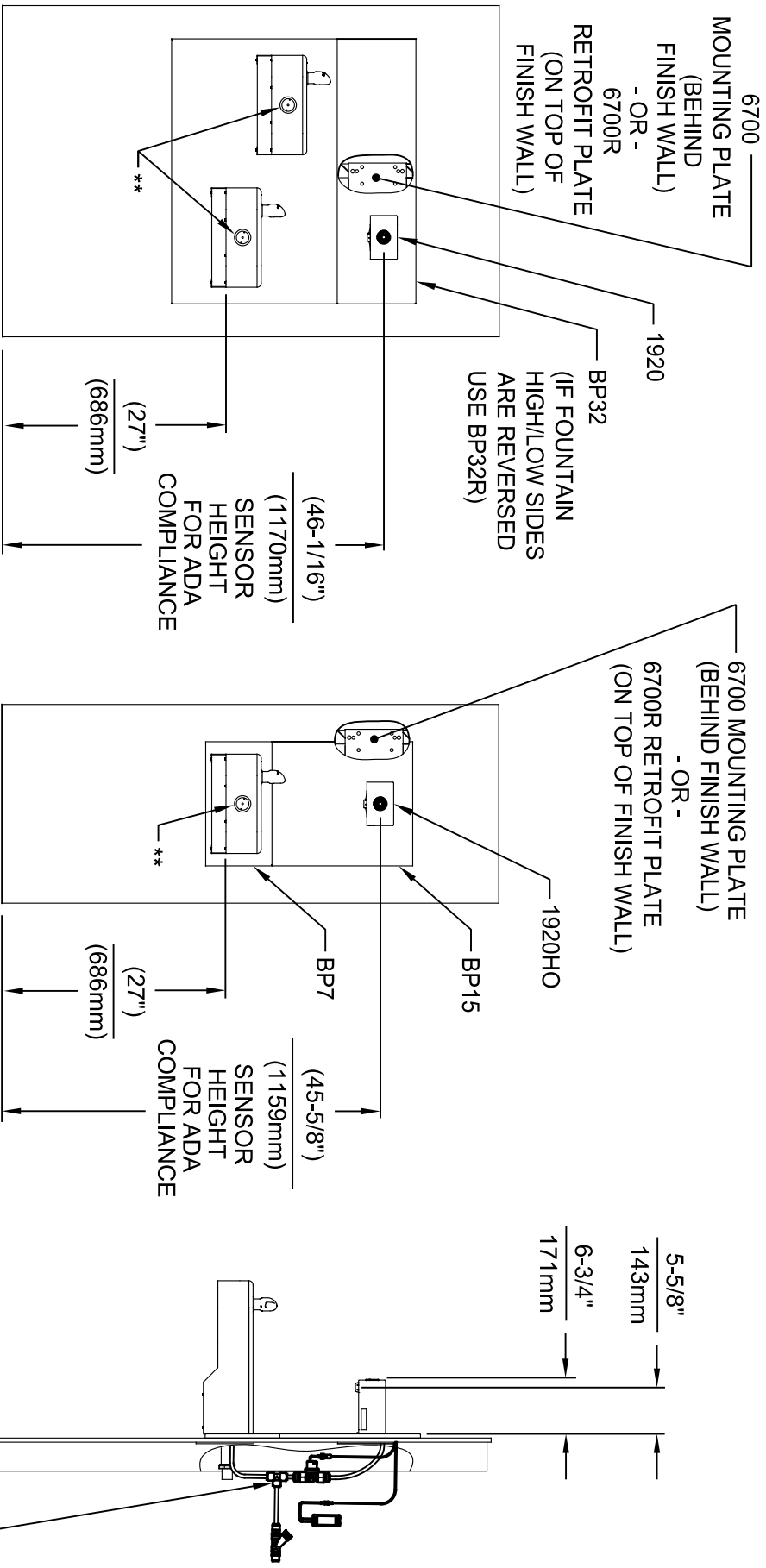
2. WHEN INSTALLING THIS UNIT, LOCAL,  
STATE OR FEDERAL CODES SHOULD  
BE ADHERED TO FOR INSTALLATION  
LOCATIONS, WASTE & SUPPLY  
REQUIREMENTS OTHER THAN SHOWN.



\*\* EXISTING PUSH BUTTON  
ASSEMBLY SHOWN, CAN  
BE CONVERTED TO HANDS  
OFF STYLE, USING RETRO-  
FIT KIT MODEL 1RKHO.H OR  
2RKHO.H DEPENDING ON  
CUSTOMER REQUIREMENTS.

3/8" O.D. SUPPLY  
TUBING AND 3/8" O.D.  
PUSH-IN TEE SUPPLIED.  
(CONNECT TO FOUNTAIN  
SUPPLY LINE)

		1455 KLEPPLE LANE SPARKS, NEVADA 89431 (775) 359-4712 FAX (775) 359-1424 E-MAIL: HAWS@HAWS.CO.COM WEBSITE: WWW.HAWS.CO.COM	
ECON. REVISED PERBY:		MODEL(S)	
5574 ECON. 6136		1920HO/1920HPSHO/1920WHO	
DRAWN: DATE: 08/18/20		SCALE: N/A	
FV: 08/18/20		DRAWING TYPE:	
FV: 11/04/24		INSTALLATION	
APPROVED:		SIZE: A1 SHEET 3 OF 8	
		PART NUMBER	
		0510001063.D	
		REVISION	
		8	



**INSTALLATION ABOVE HAWS 1117L & H1117.8 SERIES**

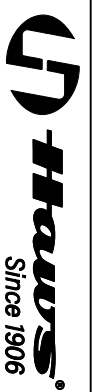
**INSTALLATION ABOVE HAWS 1107L & H1107.8 SERIES**  
**SEE SHEET 8 FOR INSTALLATION AT CHILD HEIGHT**

- \* IF YOUR FOUNTAIN IS THIS STYLE USE THESE DIMENSIONS
1. SEE SEPARATE INSTALLATION DRAWINGS FOR MOUNTING PLATES AND BACK PANELS (SHOWN FOR REFERENCE - NOT SUPPLIED).
  2. WHEN INSTALLING THIS UNIT, LOCAL, STATE OR FEDERAL CODES SHOULD BE ADHERED TO FOR INSTALLATION LOCATIONS, WASTE & SUPPLY REQUIREMENTS OTHER THAN SHOWN.

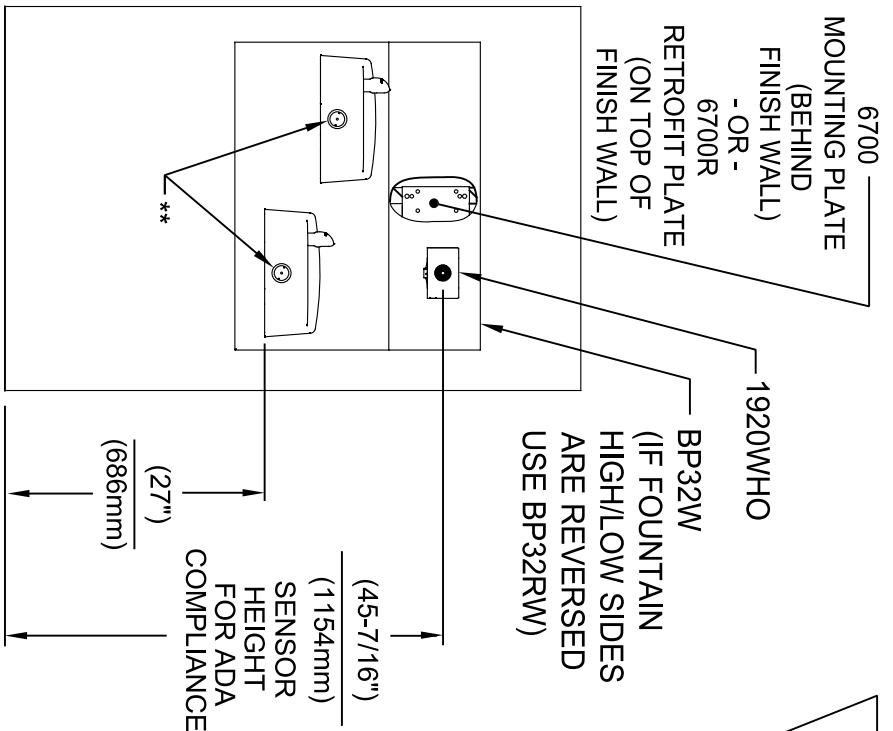


\*\* EXISTING PUSH BUTTON ASSEMBLY SHOWN, CAN BE CONVERTED TO HANDS OFF STYLE, USING RETRO-FIT KIT MODEL 1RKHO.H OR 2RKHO.H DEPENDING ON CUSTOMER REQUIREMENTS.

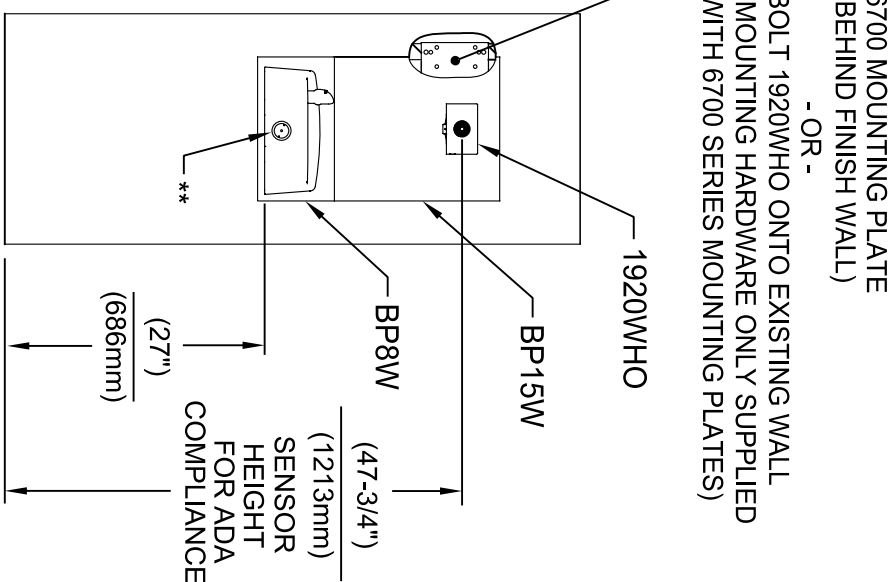
3/8" O.D. SUPPLY TUBING AND 3/8" O.D. PUSH-IN TEE SUPPLIED. (CONNECT TO FOUNTAIN SUPPLY LINE)



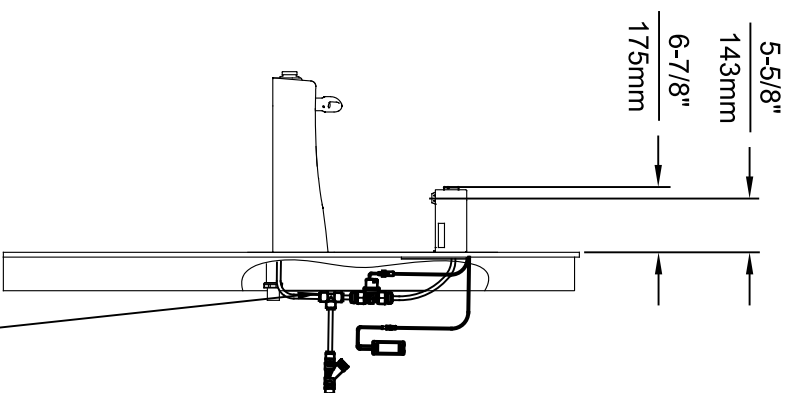
ECON NO. REVISED PERBY:		MODEL(S)		1455 KLEPPLE LANE	
5574	ECON 6136	FV	1920HO/1920HPSHO/1920WHO	SPARKS, NE/VADA 89431	(775) 359-4712 FAX (775) 359-1424
DRAWN:	DATE:	CHKD:		E-MAIL: HAWS@HAWS.CO.COM	WEBSITE: WWW.HAWS.CO.COM
FV	08/18/20	KAM		PART NUMBER	0510001063.D
APPROVED:	DATE:	SCALE:	N/A	DRAWING TYPE:	INSTALLATION
FV	11/04/24			SIZE: A1	SHEET 4 OF 8



**INSTALLATION ABOVE HAWS 1501**

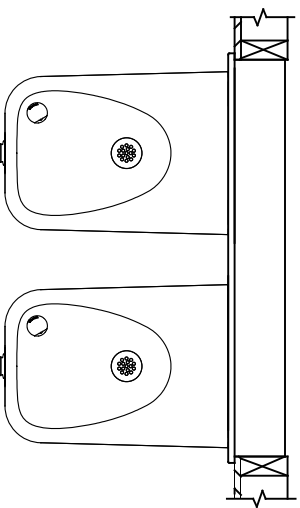


**INSTALLATION ABOVE HAWS 1311  
SEE SHEET 8 FOR INSTALLATION AT CHILD HEIGHT**



\* IF YOUR FOUNTAIN IS THIS STYLE USE THESE DIMENSIONS

1. SEE SEPARATE INSTALLATION DRAWINGS FOR MOUNTING PLATES AND BACK PANELS (SHOWN FOR REFERENCE - NOT SUPPLIED).
2. WHEN INSTALLING THIS UNIT, LOCAL, STATE OR FEDERAL CODES SHOULD BE ADHERED TO FOR INSTALLATION LOCATIONS, WASTE & SUPPLY REQUIREMENTS OTHER THAN SHOWN.



\*\* EXISTING PUSH BUTTON ASSEMBLY SHOWN, CAN BE CONVERTED TO HANDS OFF STYLE, USING RETRO-FIT KIT MODEL 1RKHO.H OR 2RKHO.H DEPENDING ON CUSTOMER REQUIREMENTS.

3/8" O.D. SUPPLY TUBING AND 3/8" O.D. PUSH-IN TEE SUPPLIED. (CONNECT TO FOUNTAIN SUPPLY LINE)



1455 KLEPPER LANE

SPARKS, NEVADA 89431

(775) 359-4712 FAX (775) 359-1424

E-MAIL: HAWS@HAWS.CO.COM

WEBSITE: WWW.HAWS.CO.COM

PART NUMBER

0510001063.D

REVISION

8

ECN NO. REVISED PERBY: 5574  
DATE: 08/18/20  
FV: KM

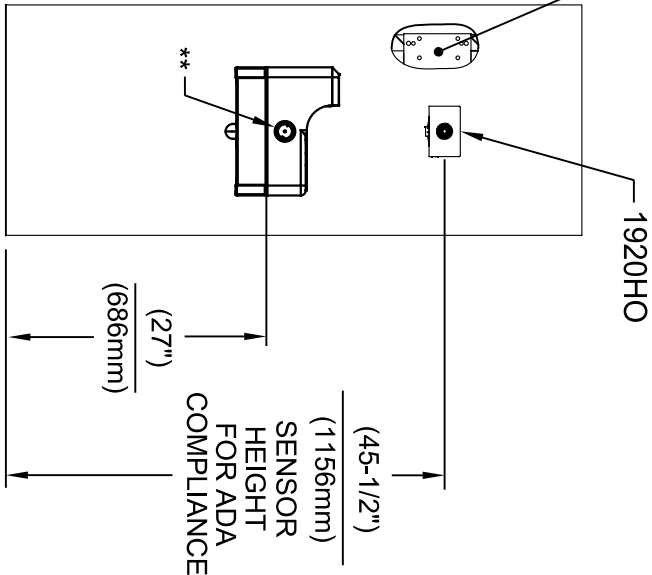
MODEL(S) 1920HO/1920HPSHO/1920WHO

SCALE: N/A  
DRAWING TYPE: INSTALLATION

SIZE: A1  
SHEET: 5 OF 8



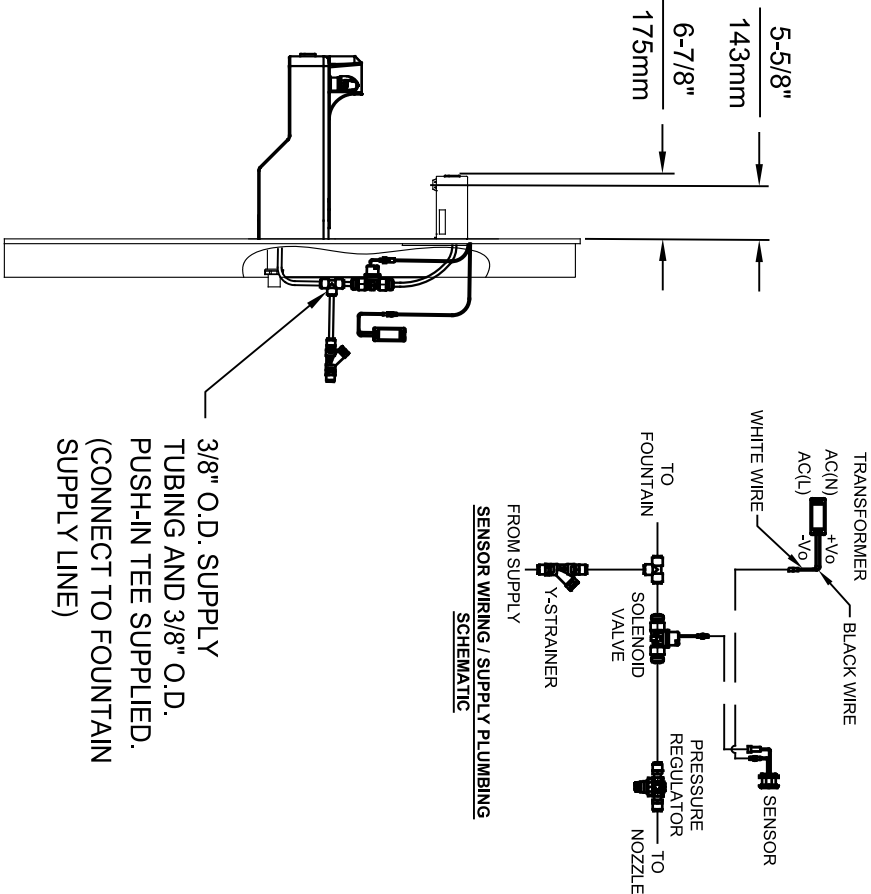
6700 MOUNTING PLATE  
(BEHIND FINISH WALL)  
- OR -  
BOLT 1920HO ONTO EXISTING WALL  
(MOUNTING HARDWARE ONLY SUPPLIED  
WITH 6700 SERIES MOUNTING PLATES)



**INSTALLATION ABOVE HAWS 1047**

\* IF YOUR FOUNTAIN IS THIS STYLE USE  
THESE DIMENSIONS

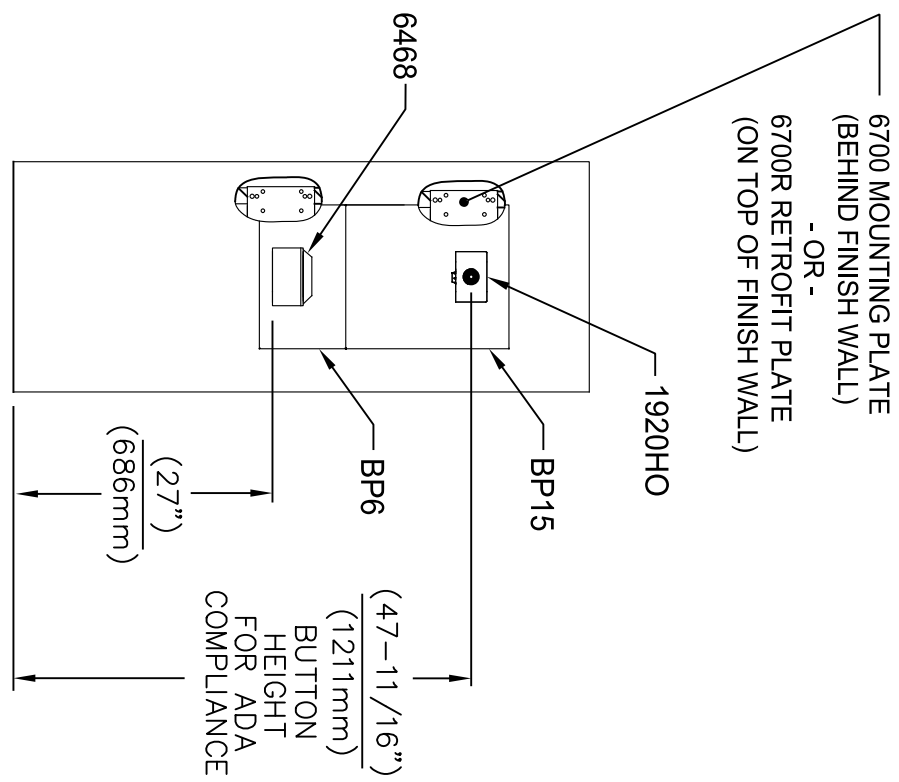
1. SEE SEPARATE INSTALLATION DRAWINGS  
FOR MOUNTING PLATES AND BACK PANELS  
(SHOWN FOR REFERENCE - NOT SUPPLIED).
2. WHEN INSTALLING THIS UNIT, LOCAL,  
STATE OR FEDERAL CODES SHOULD  
BE ADHERED TO FOR INSTALLATION  
LOCATIONS, WASTE & SUPPLY  
REQUIREMENTS OTHER THAN SHOWN.



\*\* EXISTING PUSH BUTTON  
ASSEMBLY SHOWN, CAN  
BE CONVERTED TO HANDS  
OFF STYLE, USING RETRO-  
FIT KIT MODEL 1RKHO.H.

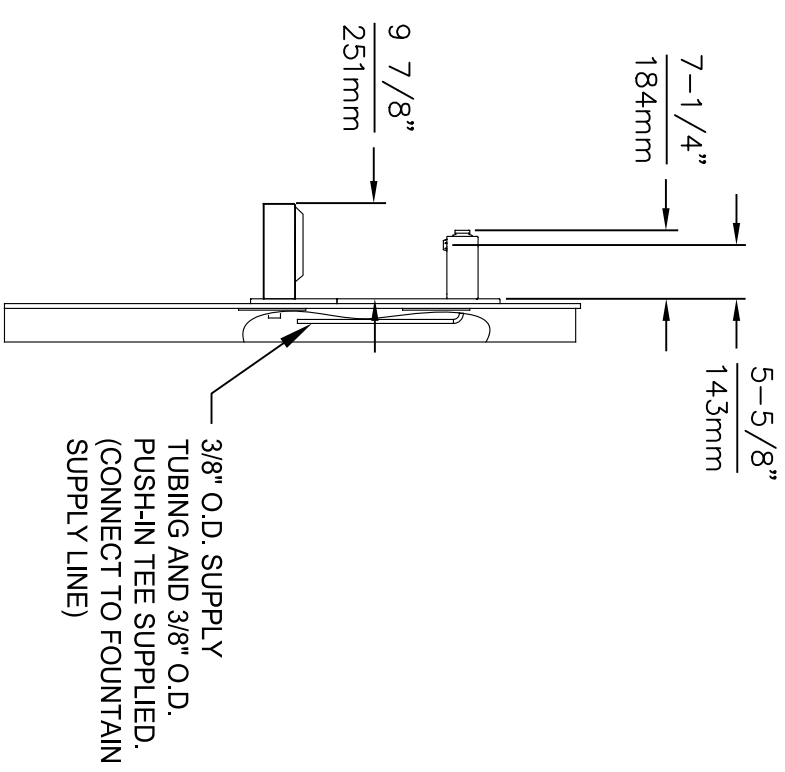


ECON. REVISED PERBY:		MODEL(S)		1455 KLEPPLE LANE	
5574	ECON. 6136	FV		SPARKS, NE/VADA 89431	
DATE:	08/18/20	CHKD:	KAM	(775) 359-4712 FAX (775) 359-1424	
APPROVED:	DATE:	SCALE:	N/A	E-MAIL: HAWS@HAWS.CO.COM	
FV	11/04/24	DRAWING TYPE:	INSTALLATION	WEBSITE: WWW.HAWS.CO.COM	
				PART NUMBER	
				0510001063.D	
				REVISION	
				8	



**INSTALLATION ABOVE 6468**

1. SEE SEPARATE INSTALLATION DRAWINGS FOR MOUNTING PLATES AND BACK PANELS (SHOWN FOR REFERENCE - NOT SUPPLIED).
2. WHEN INSTALLING THIS UNIT, LOCAL, STATE OR FEDERAL CODES SHOULD BE ADHERED TO FOR INSTALLATION LOCATIONS, WASTE & SUPPLY REQUIREMENTS OTHER THAN SHOWN.

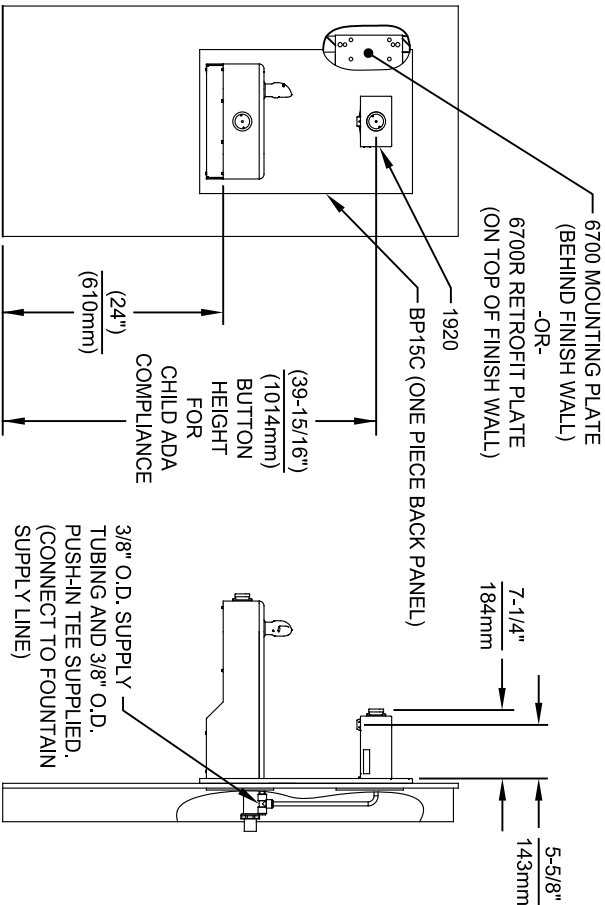




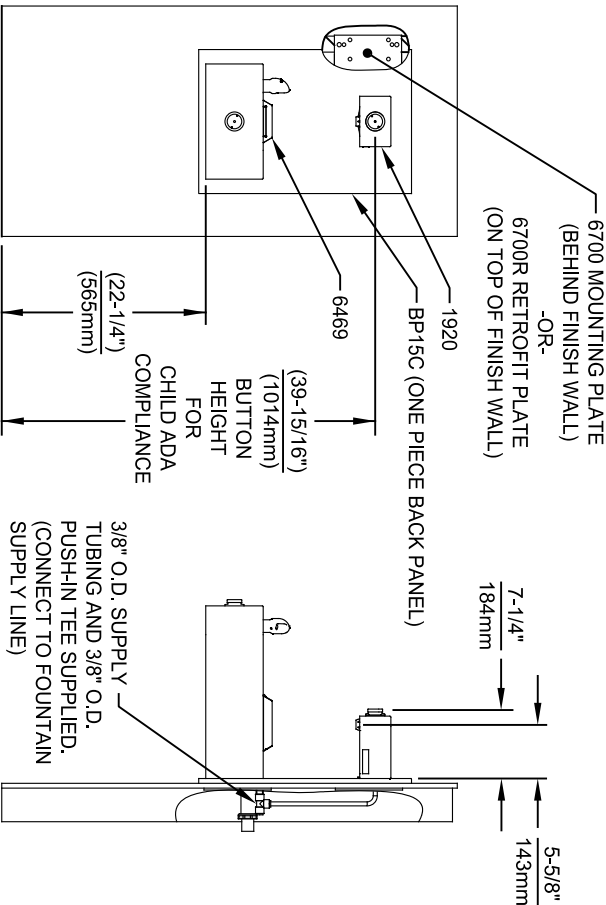
**Haws®**  
Since 1906

1455 KLEPPLE LANE  
SPARKS, NEVADA 89431  
(775) 359-4712 FAX (775) 359-1424  
E-MAIL: HAWS@HAWS.CO.COM  
WEBSITE: WWW.HAWS.CO.COM

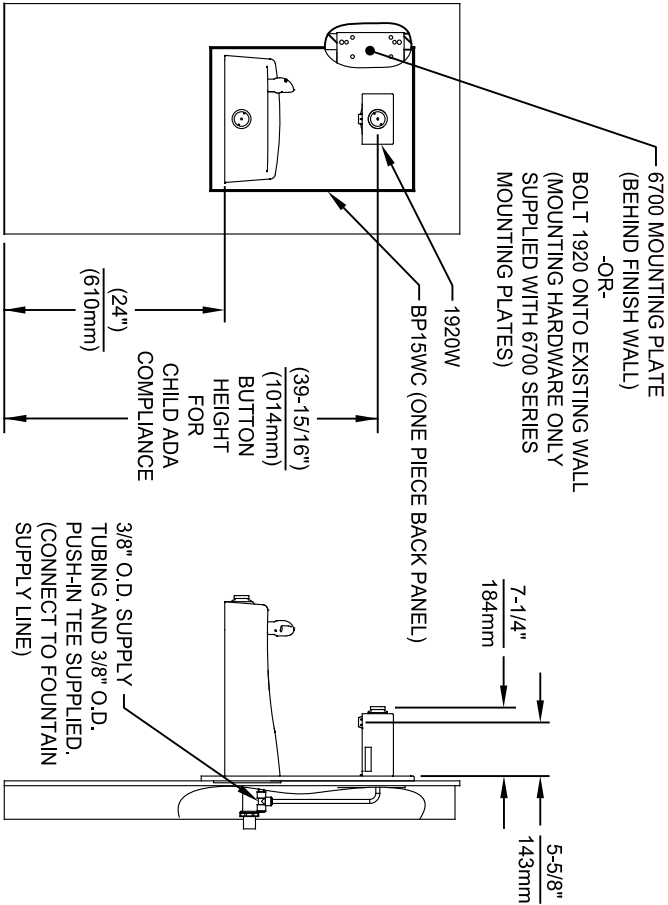
ECON NO. REVISED PERBY:		MODEL(S)	
5744	ECON 6136	1920HO/1920HPSHO/1920WHO	
DRAWN:	DATE:	CHKD:	
FV	10/04/21	KML	
APPROVED:	DATE:	SCALE:	DRAWING TYPE:
FV	11/04/24	N/A	INSTALLATION
PART NUMBER		SIZE:	SHEET
0510001063.D		A1	7 OF 8
REVISION			
8			



INSTALLATION ABOVE HAWS 1107L & H1107.8 SERIES




INSTALLATION ABOVE HAWS 1109, 1109.14 & H1109.8 SERIES  
MUST USE PARALLEL APPROACH WITH THIS BOWL COMBINATION



INSTALLATION ABOVE HAWS 1311

NOTES:

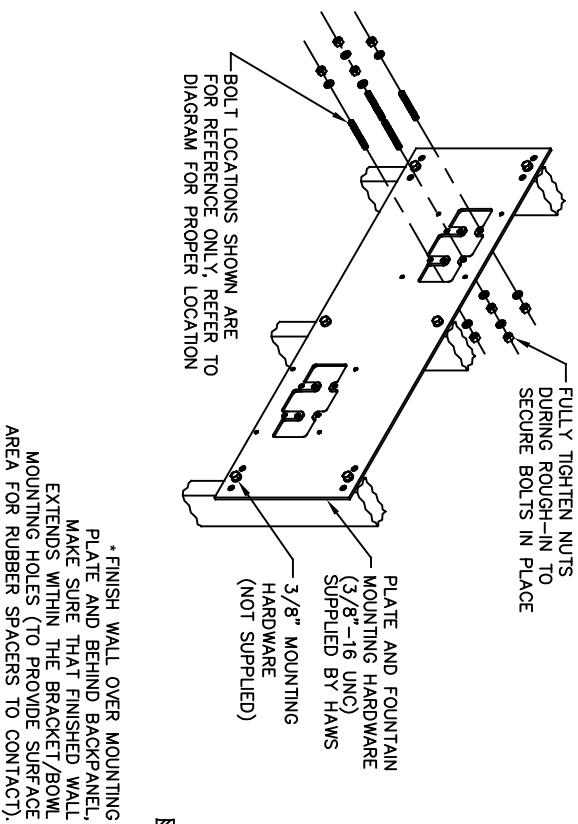
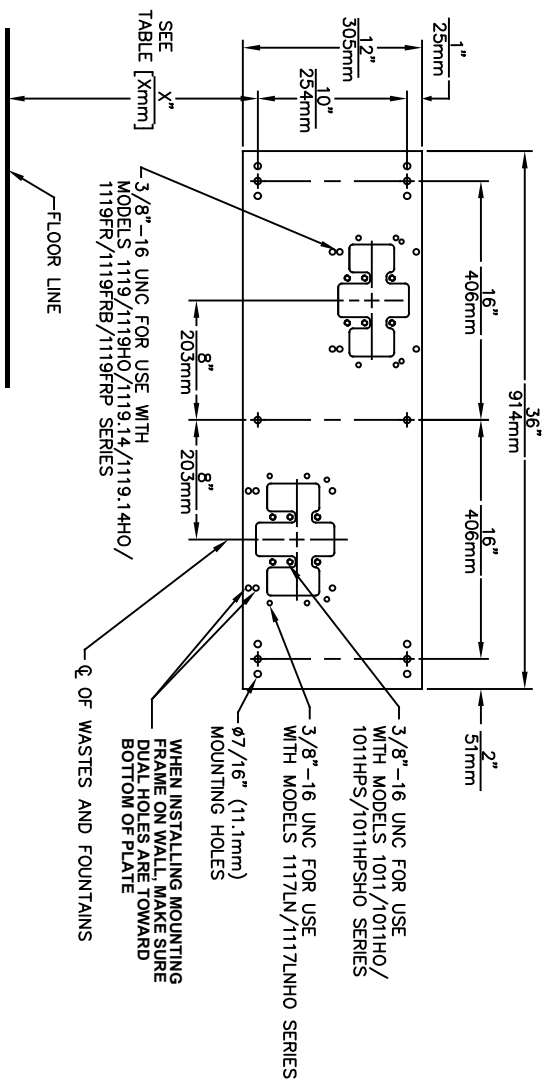
1. HEIGHT DIMENSIONS SHOWN ARE FOR CHILD ADA APPLICATIONS:
  - BOTTLE FILLER HEIGHT AT 40" MAX.
  - DRINKING FOUNTAIN BUBBLER HEIGHT AT 30" MAX.
  - (SEE SHEETS 3, 4 & 5 FOR ADULT ADA HEIGHT DIMENSIONS)
2. SEE SEPARATE INSTALLATION DRAWINGS FOR MOUNTING PLATES AND BACK PANELS (SHOWN FOR REFERENCE - NOT SUPPLIED).
3. WHEN INSTALLING THIS UNIT, LOCAL, STATE OR FEDERAL CODES SHOULD BE ADHERED TO FOR INSTALLATION LOCATIONS, WASTE & SUPPLY REQUIREMENTS OTHER THAN SHOWN.



**Haws®**  
Since 1906

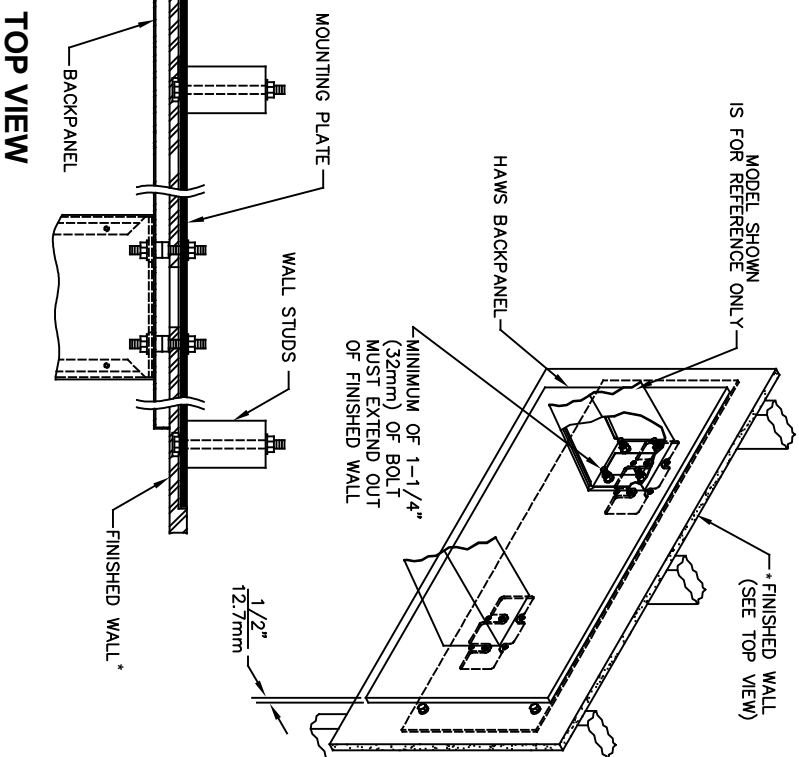
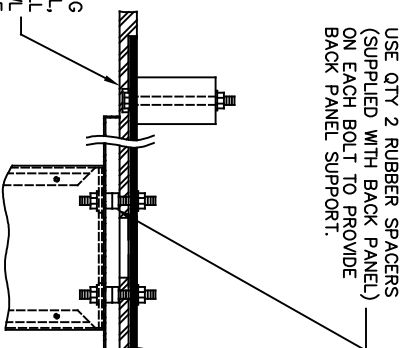
1455 KLEPPER LANE  
SPARKS, NEVADA 89431  
(775) 359-4712 FAX (775) 359-1424  
E-MAIL: HAWS@HAWS.CO.COM  
WEBSITE: WWW.HAWS.CO.COM

ECON. NO. REVISED PERBY:		MODEL(S)	
5744	ECON. 6136	1920HO/1920HPSHO/1920WHO	
DRAWN:	DATE:	CHKD:	
FV	02/26/24	KAM	
APPROVED:	DATE:	SCALE:	DRAWING TYPE:
FV	1/10/24	N/A	INSTALLATION
SIZE: A1		SHEET: 8	OF: 8
PART NUMBER		REVISION	
0510001063.D		8	



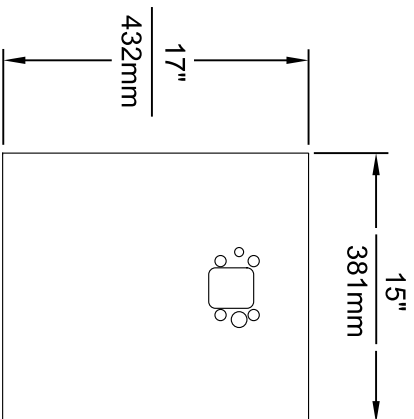
## CAUTION

REGARDING CONCRETE/MASONRY WALL MOUNTING: DO NOT SECURE MOUNTING PLATE TO SAME SIDE OF WALL AS FOUNTAIN. AVOID COMPROMISING INTEGRITY OF WALL WHEN ANCHORING FOUNTAIN. IT IS RECOMMENDED THAT INSTALLER CALL TECHNICAL SUPPORT IF THERE ARE ANY QUESTIONS AS TO HOW TO OBTAIN A PROPER ANCHOR IN CONCRETE/MASONRY WALLS. 1-800-766-5612

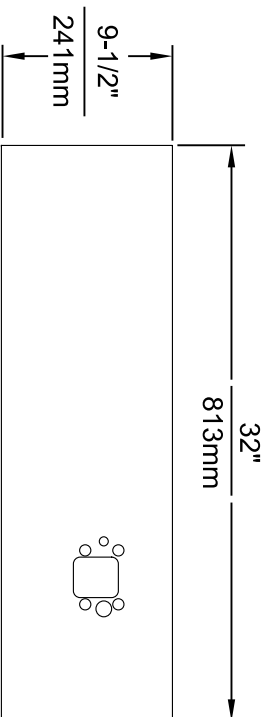
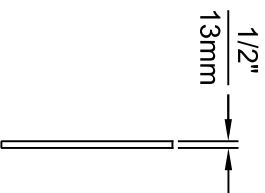


MODEL		MODEL
DIMENSION	1011/HO/PS	1117L/HO
"X"	25-1/2" [648mm]	27" [686mm]
LOWER SUPPLY	28-3/4" [730mm]	LOWER SUPPLY
LOWER WASTE	27-7/8" [708mm]	LOWER WASTE
UPPER SUPPLY	33-3/4" [857mm]	UPPER SUPPLY
UPPER WASTE	32-7/8" [835mm]	UPPER WASTE
MODEL		
DIMENSION	1119/HO	1119.14/HO
"X"	27-5/8" [702mm]	27-5/8" [702mm]
LOWER SUPPLY	29-5/8" [752mm]	29-5/8" [752mm]
LOWER WASTE	30-3/4" [781mm]	30-3/4" [781mm]
UPPER SUPPLY	35-3/8" [905mm]	35-3/8" [905mm]
UPPER WASTE	36-1/2" [927mm]	36-1/2" [927mm]
MODEL		
DIMENSION	1119FR	
"X"	27-5/8" [702mm]	
SUPPLY	SEE FREEZE	
WASTE	VALVE ROUGH-IN	

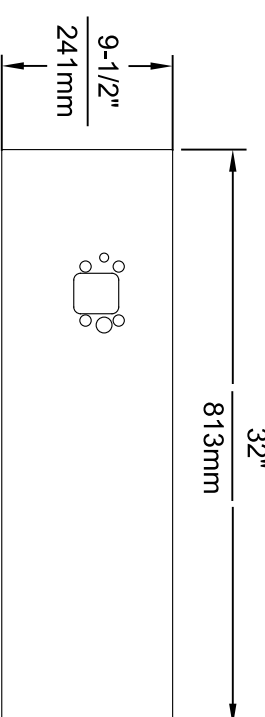
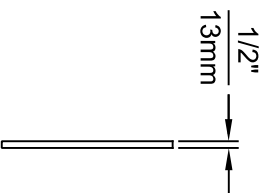
EON NO. REVISED PERMITS:		MODEL(S)		PART NUMBER	
DRAWN:	EON: 5893	FLV	6700.4	0002080023	
DATE:	CHKD:			REVISION	
C/L	04-29-93	KM		19	
APPROVED:	DATE:	09/06/93	SCALE:	NA	DRAWING TYPE
					INSTALLATION
				SIZE: A	SHEET 1 OF 1



**MODEL BP15 / BP15HPS / BP15W**



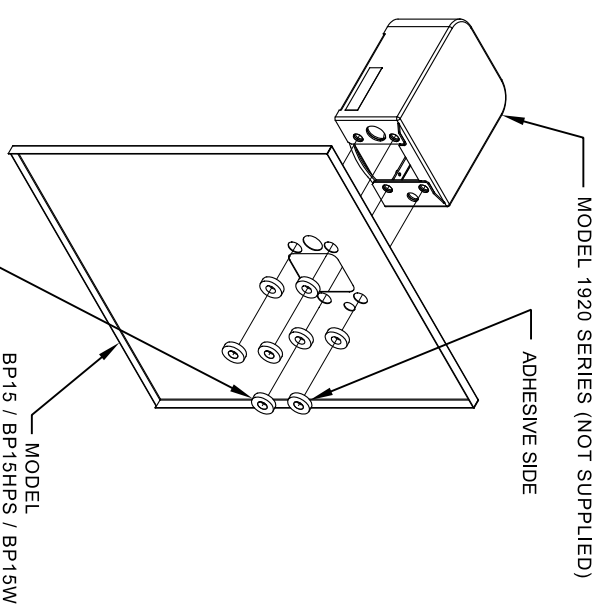
**MODEL BP32 / BP32HPS / BP32W**



**MODEL BP32R / BP32RW**

**NOTES:**

1. WHEN INSTALLING THIS UNIT, LOCAL, STATE OR FEDERAL CODES SHOULD BE ADHERED TO.
2. BOTTLE FILLER SHOWN FOR REFERENCE ONLY (NOT SUPPLIED).



**INSTALLATION OVER SINGLE FOUNTAIN**

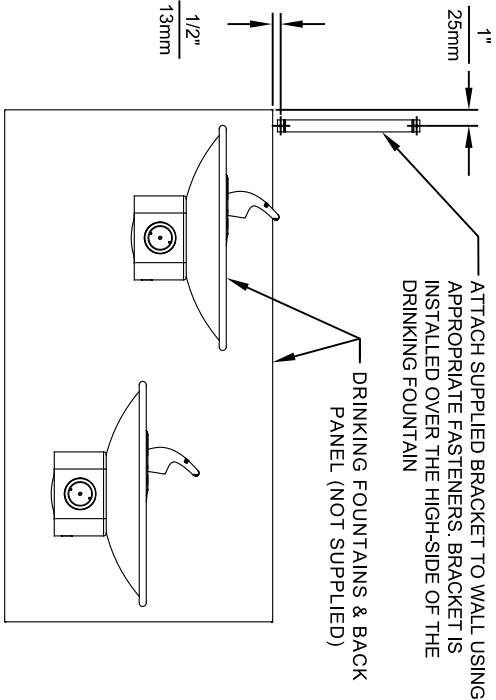
SHOWN FROM REAR

(SEE SHEET 3 OF 3 FOR INSTALLATION OF SPACERS  
ON COMBINATION BOTTLE FILLER AND FOUNTAIN  
BACK PANELS FOR CHILD HEIGHT APPLICATIONS -  
MODELS BP15C & BP15WC)

				1455 KLEPPLE LANE SPARKS, NE/VADA 89431 (775) 359-4712 FAX (775) 359-1424 E-MAIL: HAWS@HAWSOCO.COM WEBSITE: WWW.HAWSOCO.COM			
ECON. NO. REVISED PERBY: FV				MODEL(S)			
DRAWN: 5061	ECON. 5972	FV		DRAWING, BACK PANEL, SPACER INSTALLATION			
DATE: 06/27/16	CHKD: JC			FOR BP15 SERIES & BP32 SERIES, BOTTLE FILLER			
APPROVED: FV	DATE: 04/19/24	SCALE: 1:1	DRAWING TYPE: INSTALLATION	SIZE: A1	SHEET: 1 OF 3	PART NUMBER: 0510000493	REVISION: 5

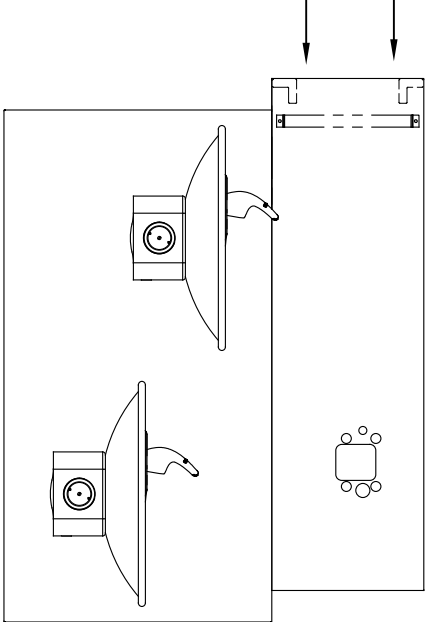
**STEP 1**

ATTACH SUPPLIED BRACKET TO WALL USING APPROPRIATE FASTENERS. BRACKET IS INSTALLED OVER THE HIGH-SIDE OF THE DRINKING FOUNTAIN



**STEP 2**

PLACE THE BACKPLATE AGAINST THE WALL AND SLIDE SIDEWAYS SO THE TABS CATCH UNDER THE BRACKET.

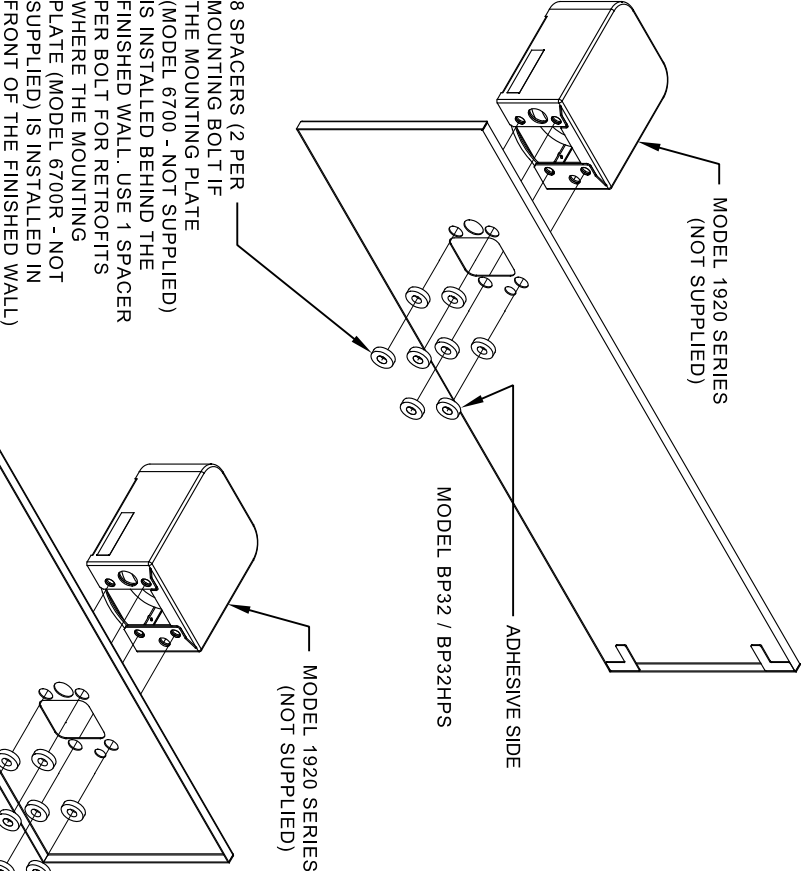


**STEP 3**

INSTALL THE BOTTLE FILLER (NOT SUPPLIED) PER THE INSTRUCTIONS SUPPLIED WITH THE UNIT.


**NOTES:**

1. WHEN INSTALLING THIS UNIT, LOCAL, STATE OR FEDERAL CODES SHOULD BE ADHERED TO.
2. BOTTLE FILLERS, DRINKING FOUNTAINS & DRINKING FOUNTAIN BACK PANELS SHOWN FOR REFERENCE ONLY (NOT SUPPLIED).




**INSTALLATION OVER DOUBLE FOUNTAIN**

SHOWN FROM REAR

				1455 KLEPPLE LANE SPARKS, NEVADA 89431 (775) 359-4712 FAX (775) 359-1424 E-MAIL: HAWS@HAWS.CO.COM WEBSITE: WWW.HAWS.CO.COM			
ECONOMY REVISED PERBY:				MODEL(S)			
DRAWN: 5081 ECON 5972 FV				DRAWING, BACK PANEL, SPACER INSTALLATION			
DATE: 02/02/17 JC				FOR BP15 SERIES & BP32 SERIES, BOTTLE FILLER			
APPROVED: FV				PART NUMBER			
DATE: 04/19/24				0510000493			
SCALE: 1:1				REVISION			
DRAWING TYPE: INSTALLATION				5			
SIZE: A1				SHEET 2 OF 3			

6700 INDEX

INSTALLATION WITH:	TYPICAL USES	SEE SHEET ...
GENERAL INSTALLATION	IMPORTANT INFORMATION FOR ALL INSTALLATIONS	3 OF 6
1001 BOWLS	HAWS SERIES 1001X, 1001.8X	3 OF 6
1107 BOWLS	HAWS SERIES 1107X, 1107.8X	3 OF 6
1109 BOWLS	HAWS SERIES 1109X, 1109.8X	3 OF 6
1047 BOWLS	HAWS SERIES 1047	4 OF 6
1011 BOWLS	HAWS SERIES 1011X, 1011.8X	4 OF 6
1119 BOWLS	HAWS SERIES 1119X, 1119.8X	4 OF 6
1117 BOWLS	HAWS SERIES 1117X, 1117.8X	5 OF 6
1311 BOWLS	HAWS SERIES 1311	5 OF 6
1501 BOWLS	HAWS SERIES 1501	5 OF 6
CHILD HEIGHT	HAWS 1107PCH, 1109PCH, 1311PCH	6 OF 6



**Haws**

Since 1906

1455 KLEPPE LANE  
SPARKS, NEVADA 89431  
(775) 359-4712 FAX (775) 359-7424  
E-MAIL: HAWS@HAWSCO.COM  
WEBSITE: WWW.HAWSCO.COM

ECN NO. REVISED PER BY:

ECN: 6148 JG

DATE: 10/03/24 JG

CHK'D:

MODEL(S)

67/00

PART NUMBER  
0002080016

APPROVED: FV

DATE: 02/11/25

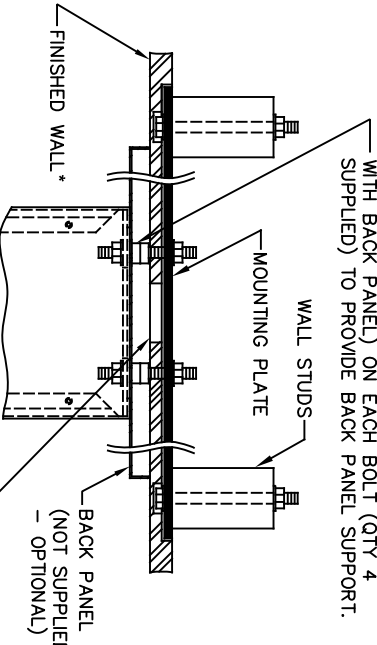
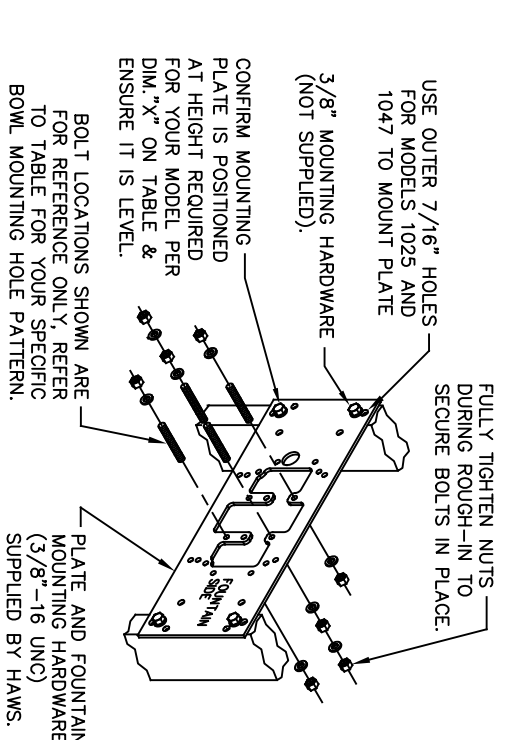
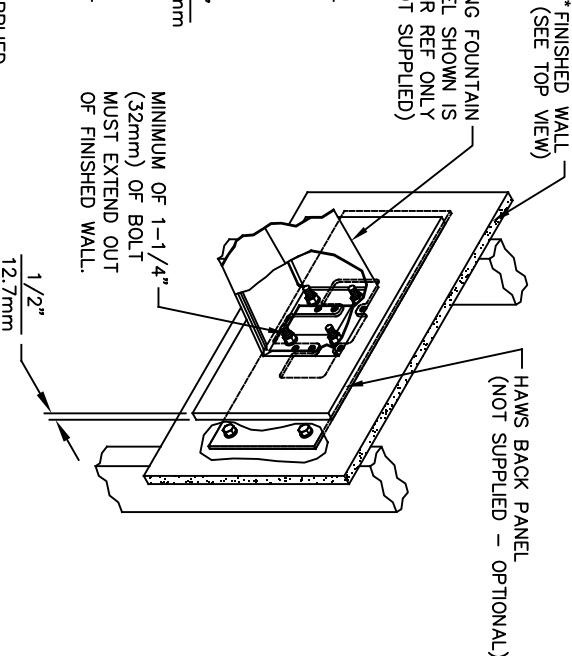
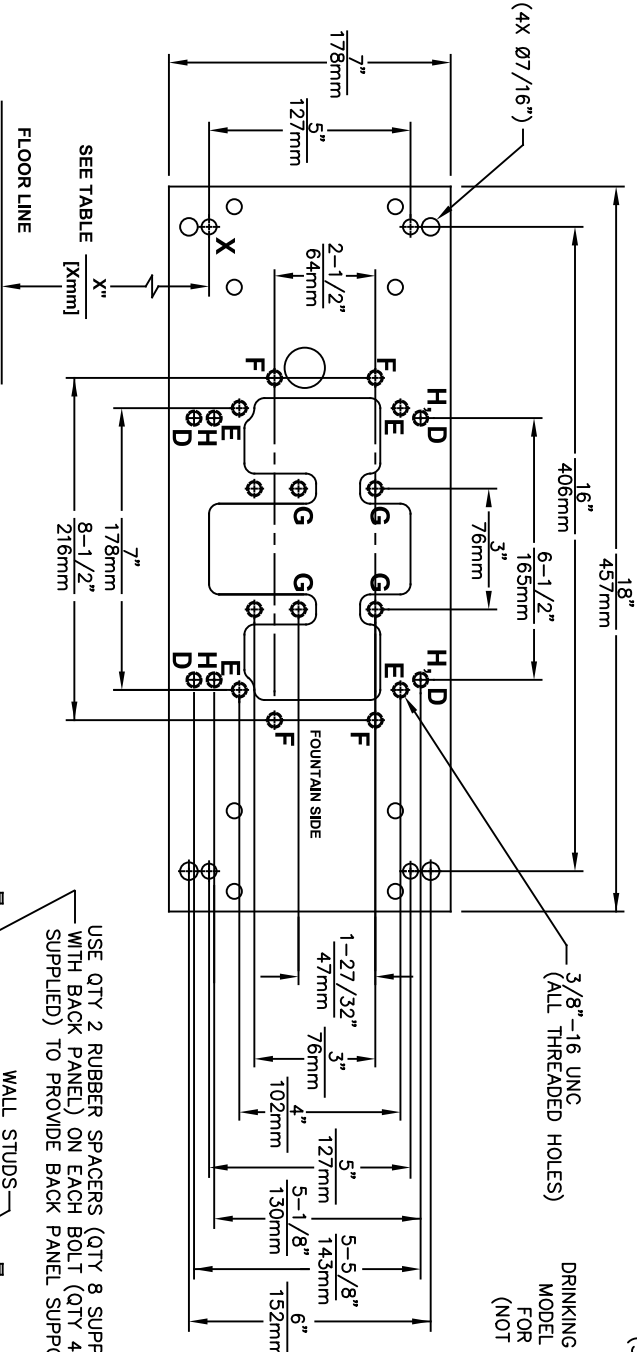
SCALE: N/A

DRAWING TYPE:

INSTALLATION

SIZE: A

SHEET 1 OF 6




DRINKING FOUNTAIN (ONLY) AT 27" ADULT HEIGHT (SEE SPECIFIC MODEL O&M'S FOR OTHER HEIGHTS)			
MODEL	USE BOWL MTG. HOLE PATTERN	USE "X" DIM. BELOW TO POSITION MOUNTING PLATE HOLE "X"	
1001	"G"	25-3/8" [645mm]	
1025	"D"	28-1/8" [714mm]	
1047	"E"	24-3/8" [619mm]	
1105	"H"	34-5/16" [872mm]	
1107	"F"	26-3/16" [665mm]	
1109	"H"	27-5/16" [694mm]	
1109.14	"H"	27-5/16" [694mm]	
1109FR	"H"	27-5/16" [694mm]	
1311	"E"	26-3/4" [679mm]	
WASTE DRIP TRAY (ONLY) AT 27" ADULT HEIGHT			
6468	"G"	25-3/8" [645mm]	
1922	"G"	25-3/8" [645mm]	

**6700 MOUNTING PLATE**  
**FOR USE WITH**  
**DRINKING FOUNTAINS**  
**AND WASTE DRIP TRAYS**  
**AT 27" ADULT HEIGHT**  
**(SEE SHEETS 2 - 5 FOR USE WITH**  
**BOTTLE FILLER 1920/1920HO SERIES**  
**AND CHILD HEIGHT APPLICATIONS)**

\* FINISH WALL OVER MOUNTING PLATE AND BEHIND BACK PANEL. MAKE SURE THAT FINISHED WALL EXTENDS WITHIN THE BRACKET/BOWL MOUNTING HOLES (TO PROVIDE SURFACE AREA FOR RUBBER SPACERS TO CONTACT).

**CAUTION**

REGARDING CONCRETE/MASONRY WALL MOUNTING: DO NOT SECURE MOUNTING PLATE TO SAME SIDE OF WALL AS FOUNTAIN. AVOID COMPROMISING INTEGRITY OF WALL WHEN ANCHORING FOUNTAIN. IT IS RECOMMENDED THAT INSTALLER CALL TECHNICAL SUPPORT IF THERE ARE ANY QUESTIONS AS TO HOW TO OBTAIN A PROPER ANCHOR IN CONCRETE/MASONRY WALLS. 1-800-766-5612



**Haws®**  
Since 1906

ECN NO. REVISED PERBY: 6700  
DRAWN: JG  
DATE: 09/20/23  
CHKD: JG  
CUL: JG

MODEL(S)  
6700

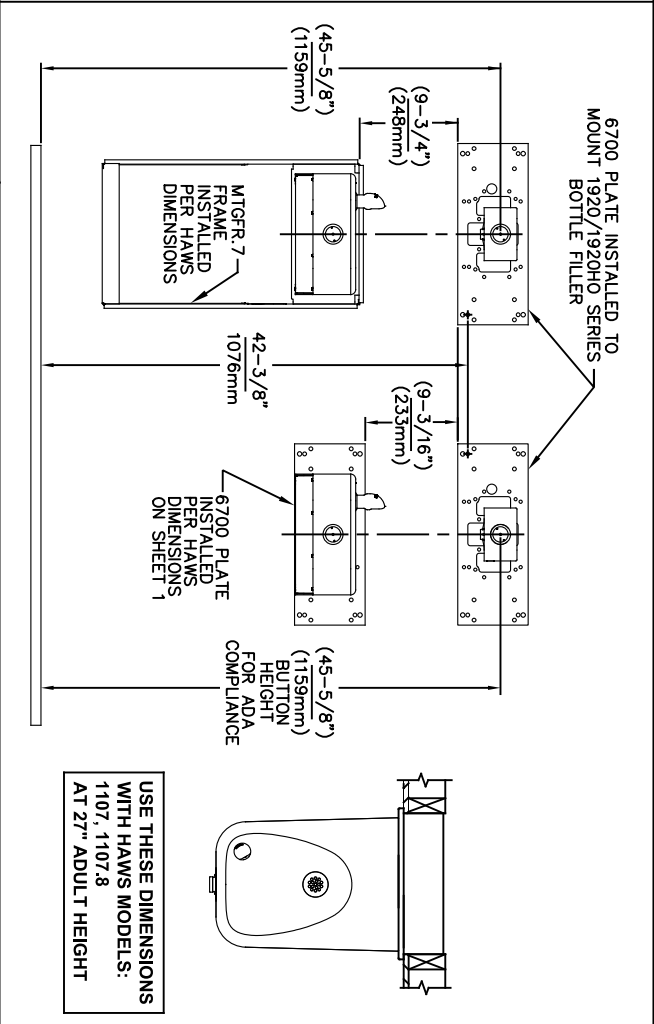
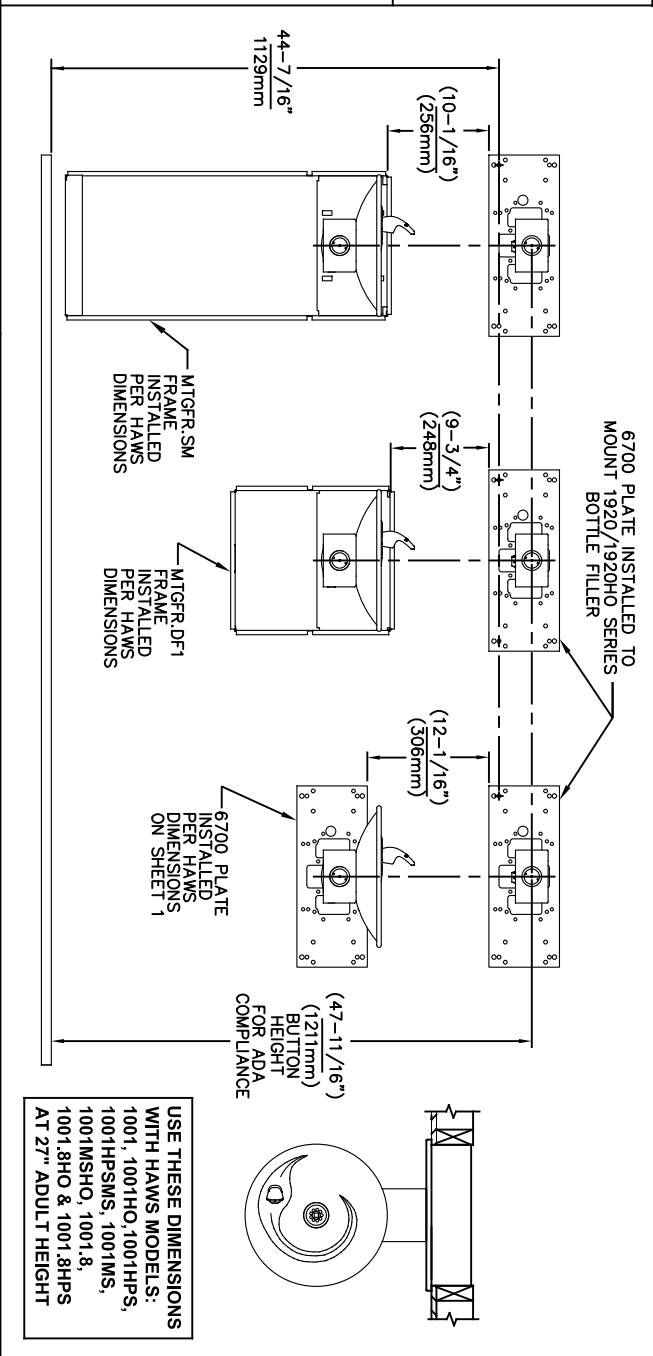
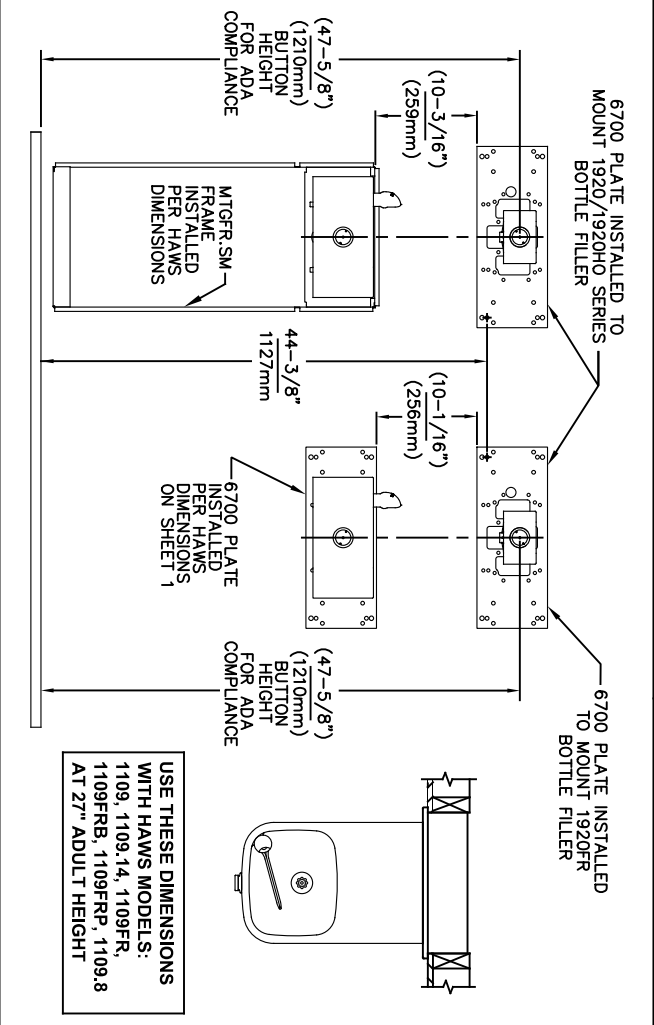
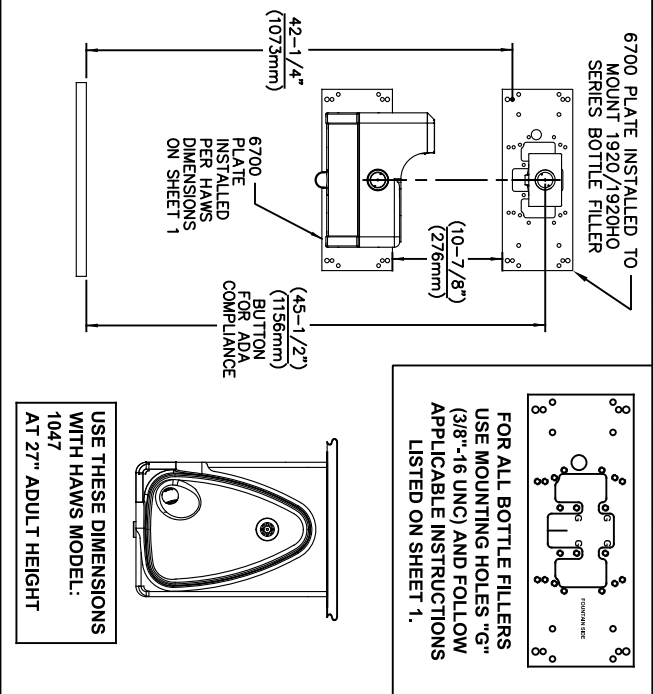
SCALE: N/A  
DRAWING TYPE: INSTALLATION  
SIZE: A  
SHEET: 2 OF 6

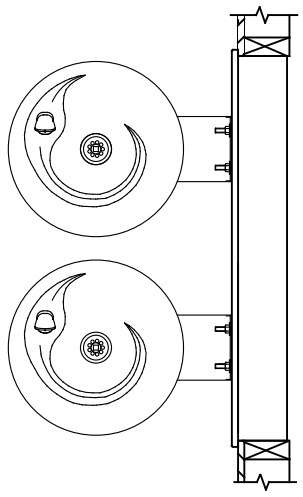
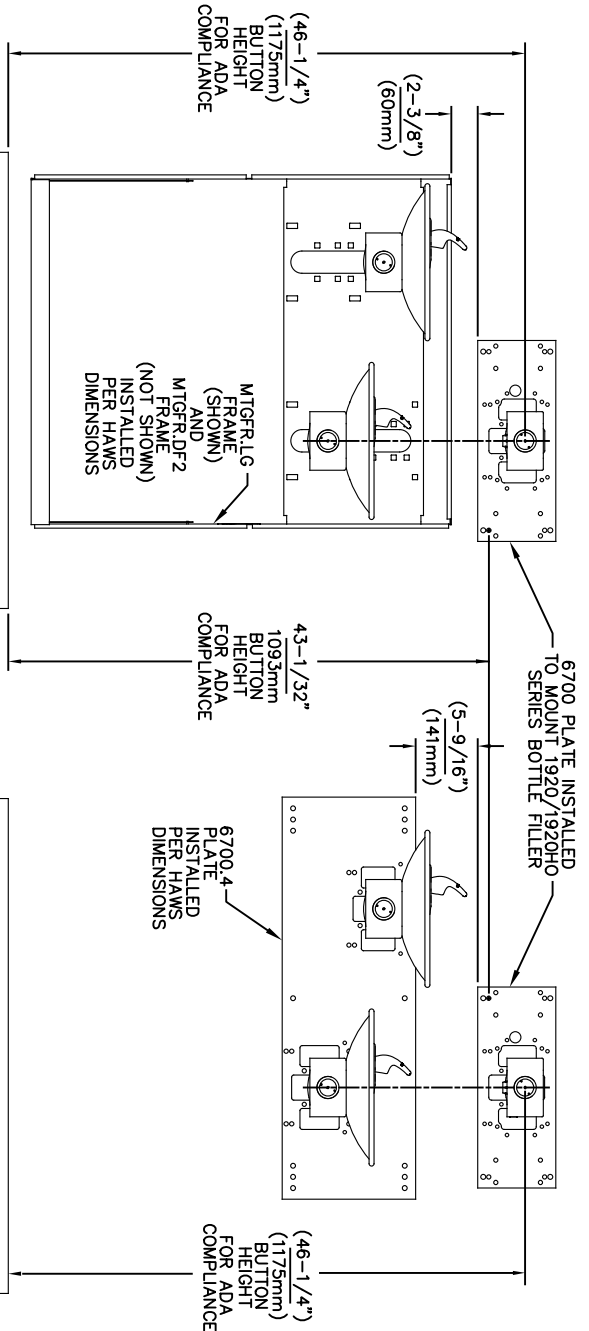
1455 KLEPPE LANE  
SPARKS, NEVADA 89431  
(775) 359-4712 FAX (775) 359-7424  
E-MAIL: HAWS@HAWS.CO.COM  
WEBSITE: WWW.HAWS.CO.COM

PART NUMBER  
0002080016

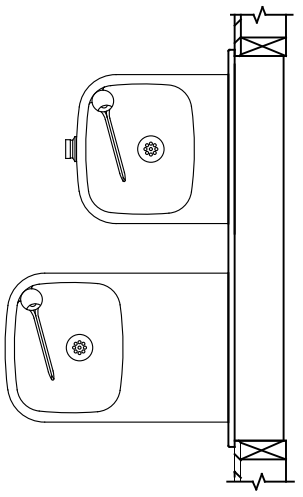
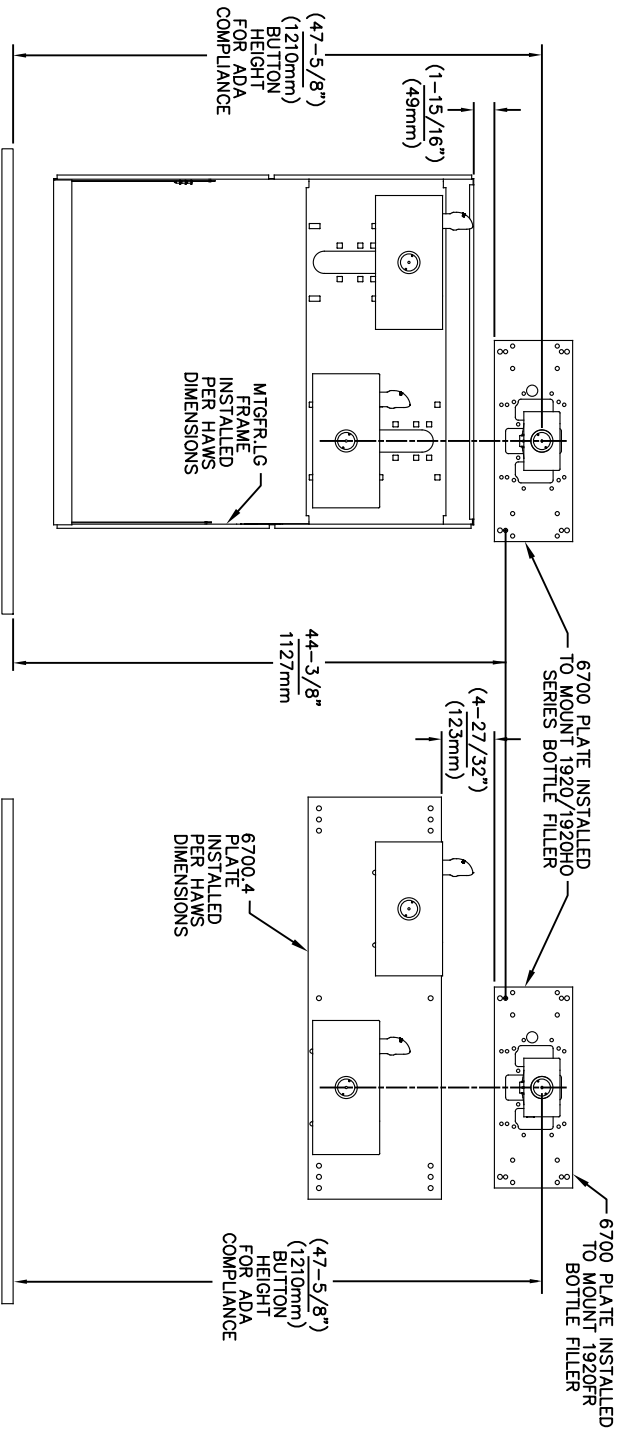
REVISION  
26








USE THESE MOUNTING DIMENSIONS IF  
INSTALLING OVER HAWS FOUNTAIN  
MODEL: 1011, 1011HO, 1011HO2,  
1011HPS, 1011HPSHO, 1011HPSHO2,  
1011HPSMS, 1011HPS, 1011HPSHO,  
1011HPSHO2, 1011.HPS, 1011.HPSHO,  
1011.HPSHO2 & 1011.HPSMS  
AT 27" ADULT HEIGHT  
INSTALL THE 6700 ABOVE THE  
FOUNTAIN MOUNTING PLATE OR  
FRAME AT THE DIMENSION SHOWN  
FOR CORRECT BACKPANEL SPACING  
BACK PANELS FOR BOTTLE FILLERS  
(NOT SUPPLIED - OPTIONAL) ARE NOT  
SHOWN FOR CLARITY.

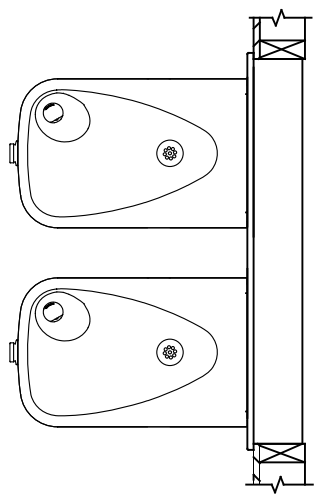
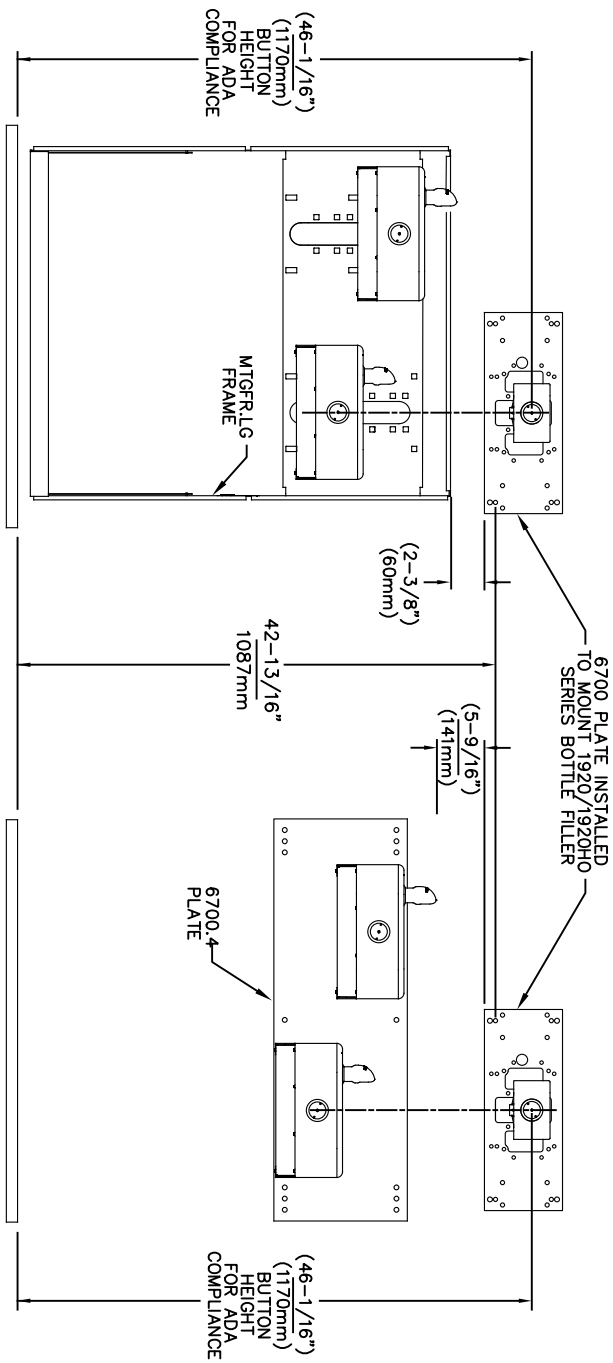


USE THESE MOUNTING DIMENSIONS IF  
INSTALLING OVER HAWS FOUNTAIN  
MODEL: 1119, 1119.14, 1119.14HO,  
1119.14HO2, 1119FR, 1119FRB,  
1119FRP, 1119HO, 1119HO2 & 1119.8  
AT 27" ADULT HEIGHT  
INSTALL THE 6700 ABOVE THE  
FOUNTAIN MOUNTING PLATE OR  
FRAME AT THE DIMENSION SHOWN  
FOR CORRECT BACKPANEL SPACING  
BACK PANELS FOR BOTTLE FILLERS  
(NOT SUPPLIED - OPTIONAL) ARE NOT  
SHOWN FOR CLARITY.

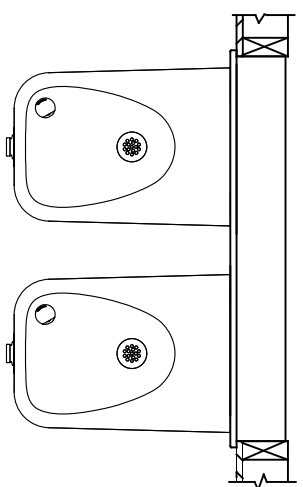
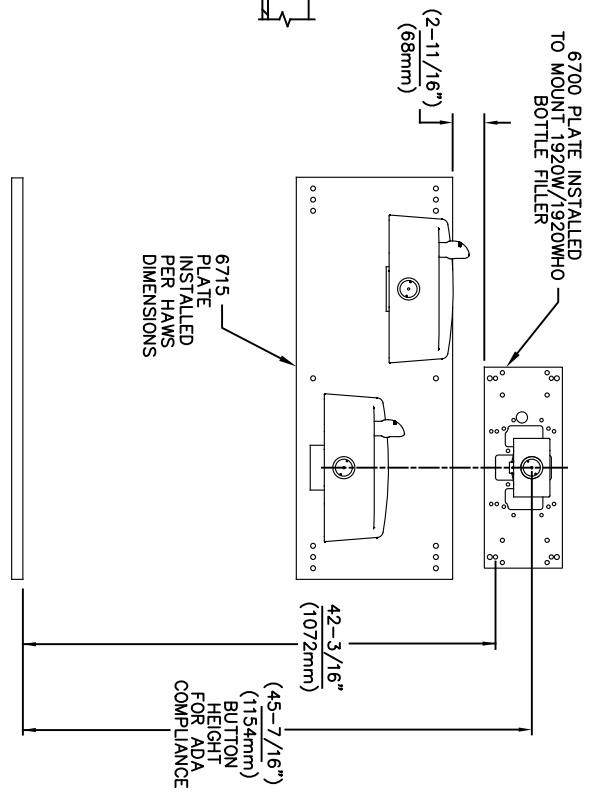
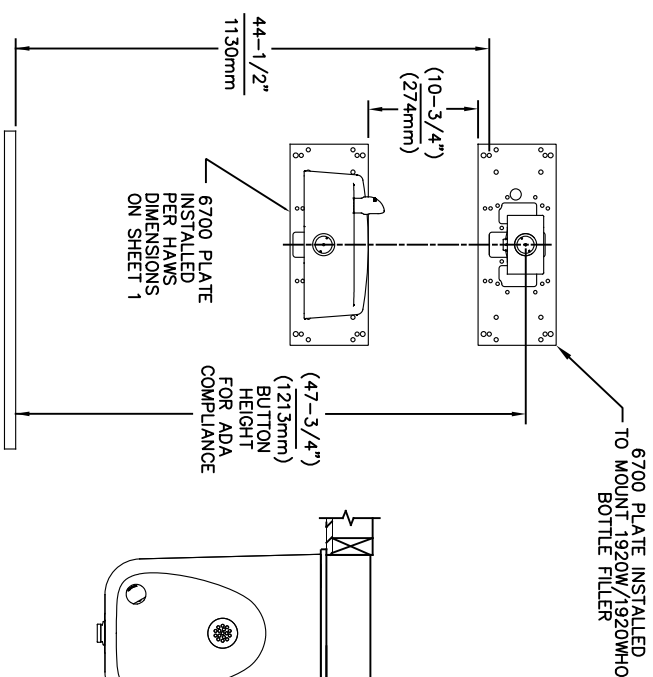
- NOTES:
1. WHEN INSTALLING THIS UNIT, LOCAL, STATE OR FEDERAL CODES SHOULD BE ADHERED TO.
  2. BACK PANELS (OPTIONAL) NOT SHOWN FOR CLARITY.

6700 MOUNTING PLATE  
FOR USE WITH BOTTLE FILLER  
(SEE SHEET 1 FOR USE WITH  
DRINKING FOUNTAINS)

		1456 KLEPPE LANE SPARKS, NEVADA 89431 (775) 359-4712 FAX (775) 359-7424 E-MAIL: HAWS@HAWS.CO.COM WEBSITE: WWW.HAWS.CO.COM	
ECN NO. REVISED PERBY:	MODEL(S)	6700	
5550 ECN 6148 JG	DATE: CHKD.	6/7/20	
FW	DATE: JG	02/11/25	
APPROVED:	DATE:	SCALE: 1:13	DRAWING TYPE: INSTALLATION
FW	DATE:	SIZE: A	SHEET 4 OF 6
PART NUMBER		REVISION	
0002080016		26	




USE THESE MOUNTING DIMENSIONS IF INSTALLING OVER HAWS FOUNTAIN MODEL: 1117, 1117.8 AT 27" ADULT HEIGHT  
INSTALL THE 6700 ABOVE THE FOUNTAIN MOUNTING PLATE OR FRAME AT THE DIMENSION SHOWN FOR CORRECT BACKPANEL SPACING  
BACK PANELS FOR BOTTLE FILLERS (NOT SUPPLIED - OPTIONAL) ARE NOT SHOWN FOR CLARITY.



USE THESE MOUNTING DIMENSIONS IF INSTALLING OVER HAWS FOUNTAIN MODEL: 1311, 1501 AT 27" ADULT HEIGHT  
INSTALL THE 6700 ABOVE THE FOUNTAIN MOUNTING PLATE AT THE DIMENSION SHOWN FOR CORRECT BACKPANEL SPACING (IF APPLICABLE).  
BACK PANEL FOR BOTTLE FILLER (NOT SUPPLIED - OPTIONAL) IS NOT SHOWN FOR CLARITY.

- NOTES:
1. WHEN INSTALLING THIS UNIT, LOCAL, STATE OR FEDERAL CODES SHOULD BE ADHERED TO.
  2. BACK PANELS (OPTIONAL) NOT SHOWN FOR CLARITY.

6700 MOUNTING PLATE  
FOR USE WITH BOTTLE FILLER  
(SEE SHEET 1 FOR USE WITH  
DRINKING FOUNTAINS)

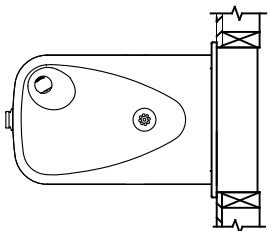
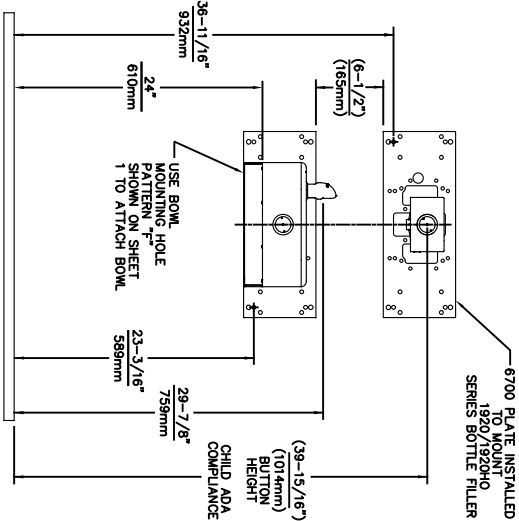


Since 1906

ECN NO. 5550	REVISED PERBY: 05/14/20	DATE: JG	CHKD: JG	MODEL(S)	6700
DRAWN: FV	DATE: 02/11/25	SCALE: 1:13	DRAWING TYPE: INSTALLATION	SHEET 5 OF 6	REVISION: 26

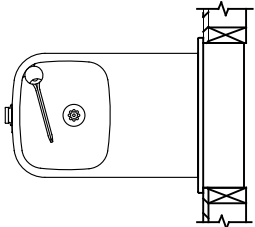
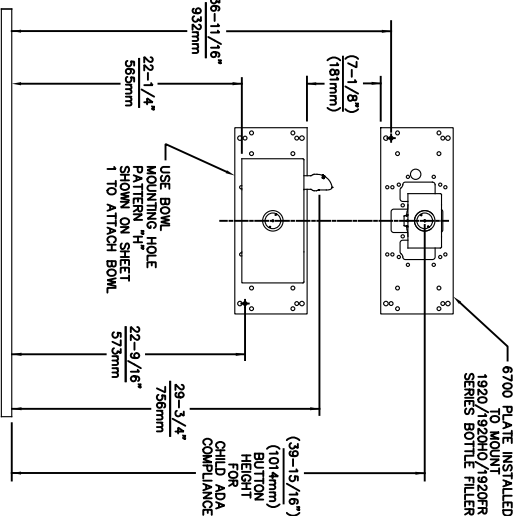
1456 KLEPPE LANE  
SPARKS, NEVADA 89431  
(775) 359-4712 FAX (775) 359-7424  
E-MAIL: HAWS@HAWS.CO.COM  
WEBSITE: WWW.HAWS.CO.COM

PART NUMBER  
0002080016



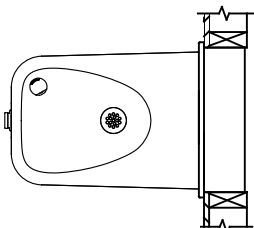
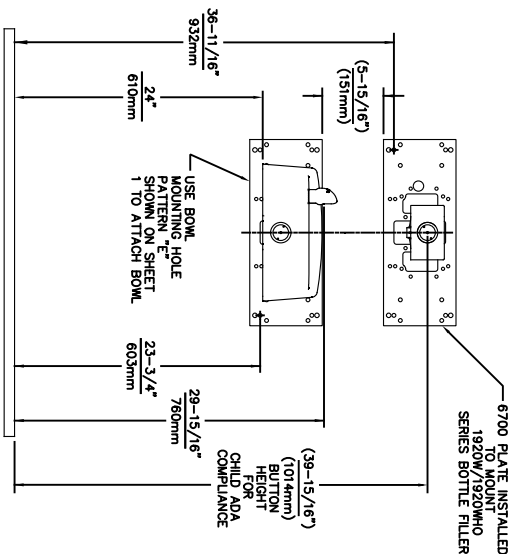
USE THESE DIMENSIONS WITH HAWS  
MODEL:  
1107PCH  
AT 24\"/>

6700 MOUNTING PLATE  
FOR USE WITH BOTTLE FILLER AT  
40\"/>



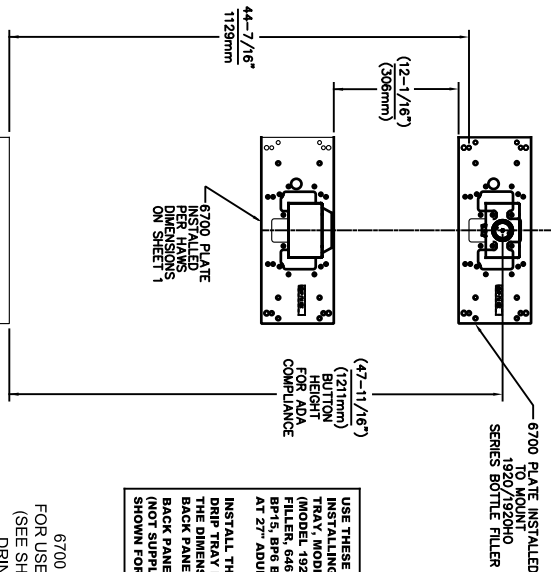
USE THESE DIMENSIONS WITH HAWS  
MODELS:  
1109, 1109.14, 1109FR, 1109FRB, 1109FRP  
AT 22-1/4\"/>

- NOTES:
1. WHEN INSTALLING THIS UNIT, LOCAL, STATE OR FEDERAL CODES SHOULD BE ADHERED TO.
  2. -ONE PIECE BACK PANELS BP15C (FOR USE WITH MODELS 1107L, 1109 SERIES & BOTTLE FILLER) & BP15WC (FOR USE WITH MODEL 1311 & BOTTLE FILLER) ARE USED FOR CHILD HEIGHT APPLICATIONS AND ARE OPTIONAL (NOT SHOWN FOR CLARITY).



USE THESE DIMENSIONS WITH HAWS  
MODEL:  
1107PCH  
AT 24\"/>


6700 MOUNTING PLATE  
FOR USE WITH BOTTLE FILLER AT  
40\"/>



USE THESE MOUNTING DIMENSIONS IF  
INSTALLING OVER HAWS WASTE DRIP  
TRAY. MODEL: 6468 (SHOWN), 1922  
(MODEL 1922 INCLUDES 1920 BOTTLE  
FILLER, 1920 WASTE DRIP TRAY, &  
BP15C BACK PANELS (NOT SHOWN),  
AT 27\"/>

INSTALL THE 6700 ABOVE THE  
DRIIP TRAY MOUNTING PLATE AT  
THE DIMENSION SHOWN FOR CORRECT  
BACK PANEL SPACING (IF APPLICABLE).  
BACK PANEL FOR BOTTLE FILLER  
(NOT SUPPLIED - OPTIONAL) IS NOT  
SHOWN FOR CLARITY.

6700 MOUNTING PLATE  
FOR USE WITH BOTTLE FILLER  
(SEE SHEET 1 FOR USE WITH  
DRINKING FOUNTAINS  
AND WASTE DRIP TRAY)

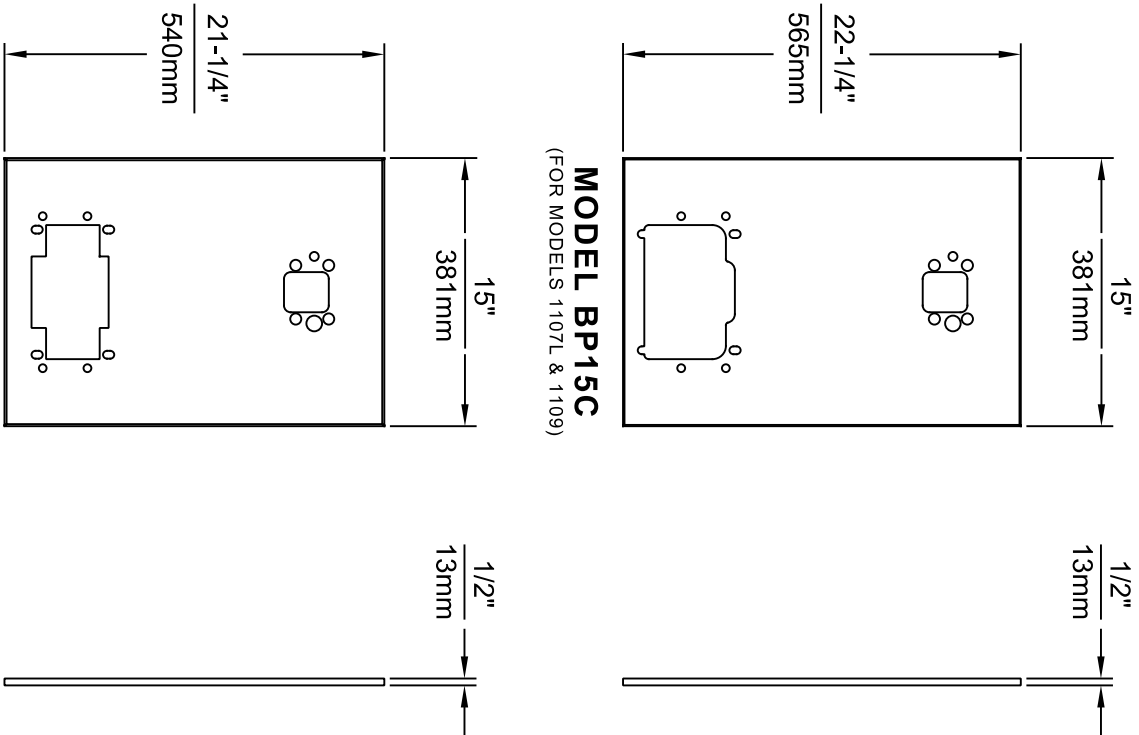


Since 1906

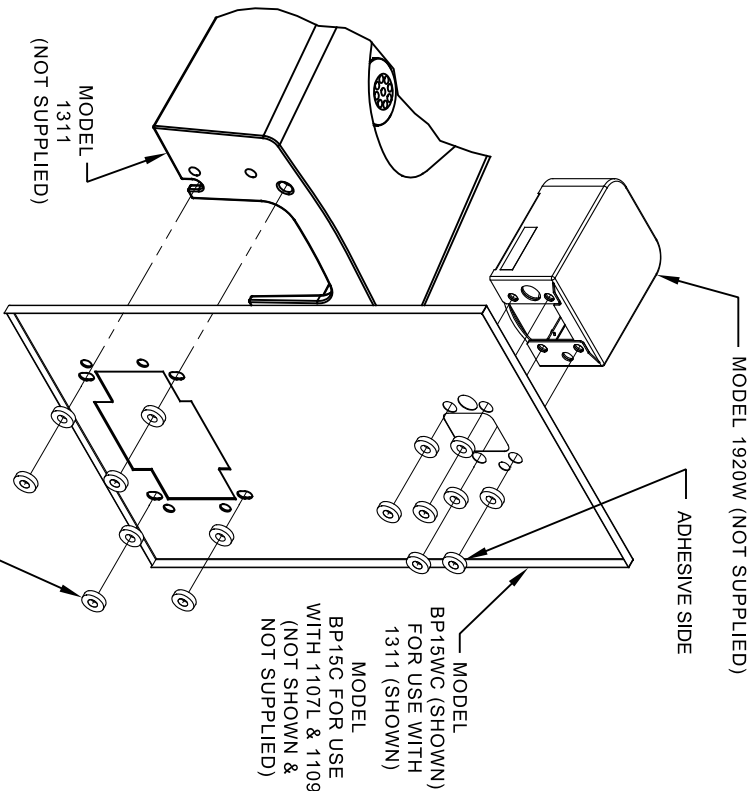
1456 KLEPPE LANE  
SPARKS, NEVADA 89431  
(775) 359-4712 FAX (775) 359-7424  
E-MAIL: HAWS@HAWS.CO.COM  
WEBSITE: WWW.HAWS.CO.COM

ECN NO. REVISED PERBY:	MODEL(S)
5893 1 ECN: 6148 JG	6700
DRAWN: DATE: CHKD:	
FV 07/26/23 JG	
APPROVED: DATE:	
FV 02/11/25	
SCALE: 1:13	DRAWING TYPE:
INSTALLATION	SHEET 6 OF 6

THIS DOCUMENT IS TRUE AND CORRECT AT TIME OF PUBLICATION. CONTINUED PRODUCT IMPROVEMENTS  
MAKE SPECIFICATIONS AND MEASUREMENTS SUBJECT TO CHANGE WITHOUT NOTICE.



- NOTES:
1. WHEN INSTALLING THIS UNIT, LOCAL, STATE OR FEDERAL CODES SHOULD BE ADHERED TO.
  2. BOTTLE FILLER AND DRINKING FOUNTAIN SHOWN FOR REFERENCE ONLY (NOT SUPPLIED).



## ONE PIECE INSTALLATION ON SINGLE FOUNTAIN

SHOWN FROM REAR

(MODEL BP15C & BP15WC ARE COMBINATION BOTTLE FILLER AND FOUNTAIN BACK PANELS USED FOR CHILD HEIGHT APPLICATIONS ONLY ON MODELS 1107L, 1109 & 1311 - BOTTLE FILLER & DRINKING FOUNTAIN NOT SUPPLIED)

 Since 1906				1455 KLEPPER LANE SPARKS, NEVADA 89431 (775) 359-4712 FAX (775) 359-424 E-MAIL: HAWS@HAWS.CO.COM WEBSITE: WWW.HAWS.CO.COM																															
ECON. REVISED PERBY:				MODEL(S)				PART NUMBER																											
9972		ECON. 9972		FV		DATE		12/13/23		DATE		04/19/24		SCALE		1:1		DRAWING TYPE:		INSTALLATION		SIZE: A		SHEET 3 OF 3											
DRAWN:				DATE:				CHKD:				DATE:				SCALE:				DRAWING TYPE:				INSTALLATION				SIZE: A				SHEET 3 OF 3			
FV				DATE:				DATE:				DATE:				SCALE:				DRAWING TYPE:				INSTALLATION				SIZE: A				SHEET 3 OF 3			
APPROVED:				DATE:				DATE:				DATE:				SCALE:				DRAWING TYPE:				INSTALLATION				SIZE: A				SHEET 3 OF 3			
FV				DATE:				DATE:				DATE:				SCALE:				DRAWING TYPE:				INSTALLATION				SIZE: A				SHEET 3 OF 3			
DRAWING, BACK PANEL, SPACER INSTALLATION																FOR BP15 SERIES & BP32 SERIES, BOTTLE FILLER								0510000493											
REVISION																5																			