



Haws
Since 1906

model 1011HO-1920HO

ADA Vandal-Resistant Motion-Activated/Push Button Dual Fountain w/Bottle Filler

FEATURES & BENEFITS

CONSTRUCTION

Rugged ADA accessible 18 gauge Type 304 Stainless Steel swirl design bowls, 14 gauge Type 304 Stainless Steel brackets, and a vandal-resistant bottom plate provides a long lasting unit with added peace of mind.

BOTTLE FILLER

14-gauge Type 304 stainless steel bottle filler housing with touchless operation and 1 gpm (3.78 L) laminar flow with 30-second obstruction time-out.

VANDAL RESISTANT

The bubbler heads, push button, round bowls, drain strainers and bottom plates are locked in place, discouraging unwanted vandalism, and 30-second obstruction time-out to reduce tampering of sensor.

BUBBLER HEADS

Polished chrome-plated brass bubbler heads with integral laminar flow prevents splashing while providing a superior flow pattern. The integral 11/16" dia. basin shank and stainless anti-rotation roll pin for vandal resistance strength. Shielded, angled stream opening provides a steady source of drinking water at .45 gpm.

FOUNTAIN VALVES

Fountain incorporates touchless sensor operated stainless steel solenoid valves controlled by a transformer on the bottle filler and on one side of the fountain, and a push-button activated valve which offers the only all stainless steel valve body that is machined out of solid bar stock and is fully serviceable through the front of the push button assembly offering access to the water control cartridge and integral water supply strainer on the other.

MOUNTING

3/16" (.47 cm) thick steel mounting plate (sold separately) is larger, thicker and stronger than any other plate in the industry, and shall include the all-thread studs, nuts, and washers which allows for easy installation to a framed wall.



REQUIRED MODELS

1011HO / 6700.4 / 1920HO / BP32

Order these items to make up the Model 1011HO-1920HO fountain with stainless steel back panel, bottle filler with stainless steel back plate, and fountain mounting plate shown above.

FOR INDOOR USE ONLY

SPECIFICATIONS

Model 1011HO-1920HO ADA wall mounted vandal-resistant combination motion activated/push button drinking fountain and bottle filler shall include dual 18 gauge Type 304 Stainless Steel satin finish basins with integral swirl design, 14 gauge Type 304 Stainless Steel wall brackets and bottle filler bracket, 100% lead-free waterways, touchless sensor operated solenoid valves with 30-second obstruction time-out on bottle filler and on one side of fountain, and vandal-resistant push-button operated stainless steel valve with front-accessible cartridge and flow adjustment on the other, 1 gpm (3.78 L) bottle filler laminar flow, polished chrome-plated brass vandal-resistant bubbler heads with integral laminar anti-squirt flow, chrome-plated brass vandal-resistant waste strainers, vandal-resistant bottom plates, stainless steel satin finish back panel, high and low fountain mounting levels, and 1-1/4" O.D. (3.2 cm) waste pipes. (P-trap and stop require rear access) Manufactured to be lead-free by all known definitions including NSF/ ANSI/CAN 61-Section 9, NSF/ANSI/ CAN 372, California Proposition 65, and the Federal Safe Drinking Water Act. Product is compliant to California Health and Safety Code 116875 (AB 1953-2006), and NSF/ANSI/CAN 61: Q ≤ 1.

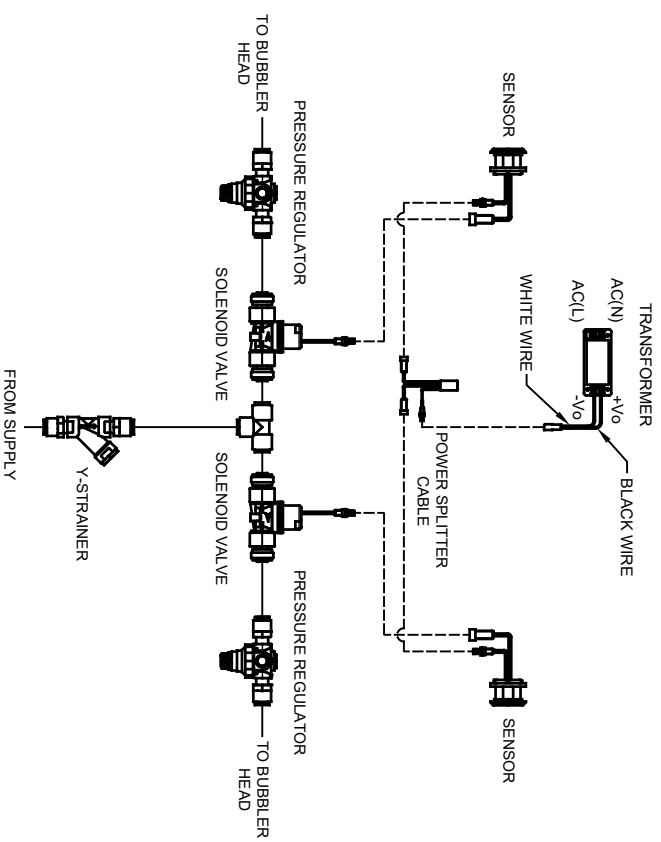
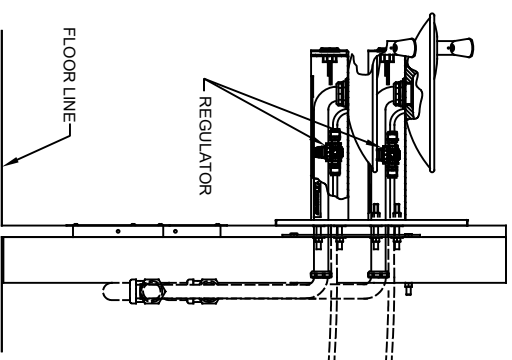
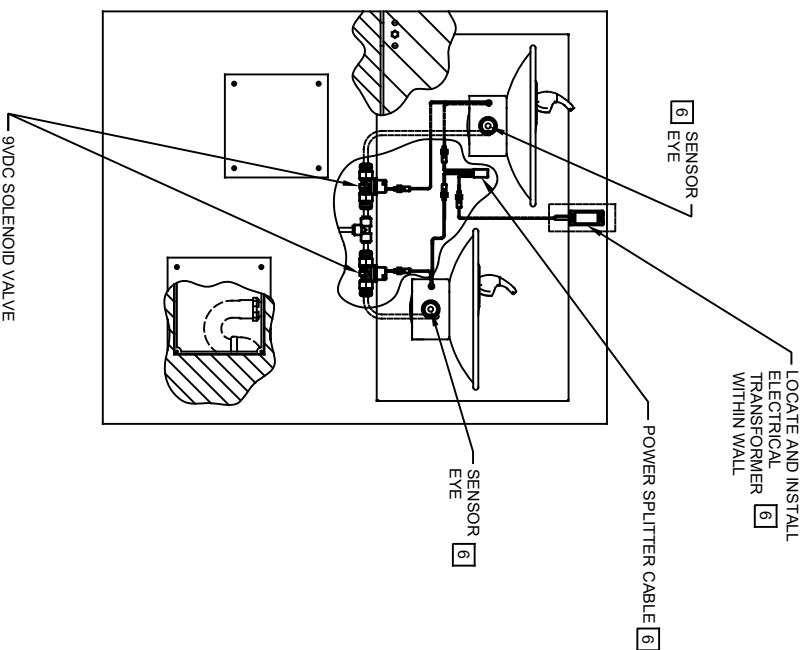
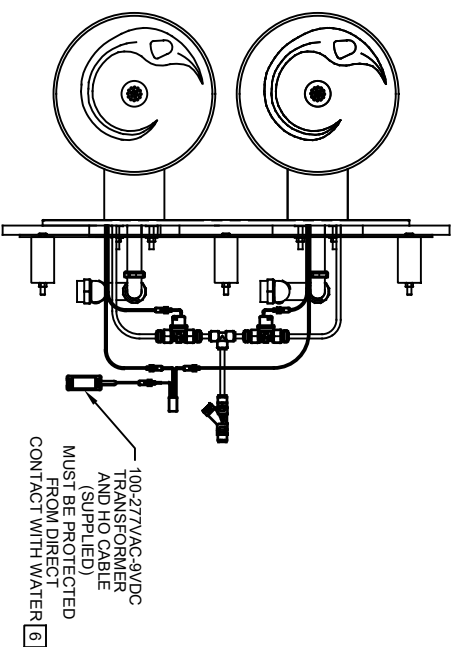
The bottle filler requires a mounting plate; either the Haws model 6700 in-wall or the 6700R on-wall support plate.



OPTIONS

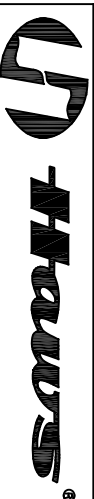
- Support Frame: Model 6800 universal in-wall mounting support for use with most fountains.
- Mounting Plate: Model 6700R, on-wall mounting plate for model 1920.
- Mounting Plate: Model 6700, in-wall mounting plate for model 1920.
- Bottle Filler Stand: Model BTL1001, add-on stainless steel stand to place bottle on when 1920 bottle filler is used.

For more information, visit www.hawsco.com or call (888) 640-4297.



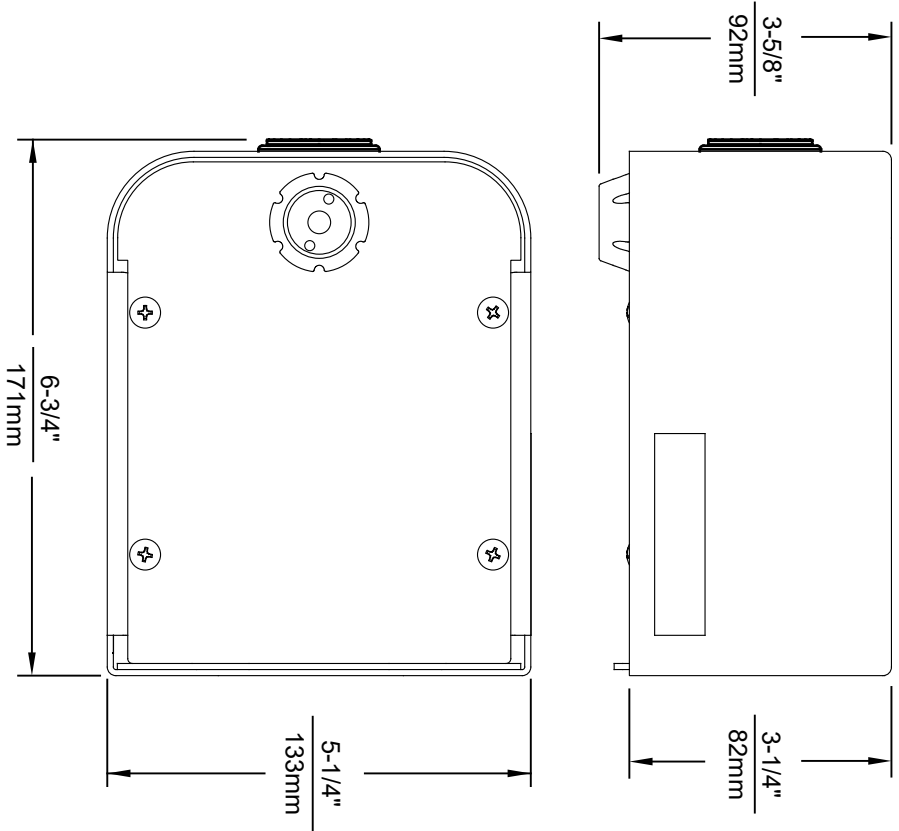
SENSOR WIRING / SUPPLY PLUMBING

SCHEMATIC



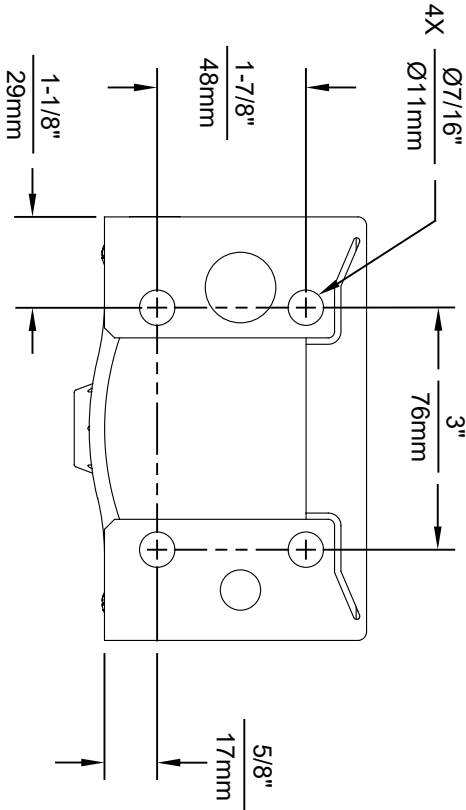
1455 KLEPPE LANE
SPARKS, NEVADA 89431
(775) 359-4712 FAX (775) 359-7424
E-MAIL: HAWS@HAWS.CO.COM
WEBSITE: WWW.HAWS.CO.COM

MODEL 1011HO2/1011HPSHO2 SHOWN
MODEL 1011HO/1011HPSHO ON SHEET 1
(SEE SHEET 1 FOR APPLICABLE ROUGH-IN DIMENSIONS)

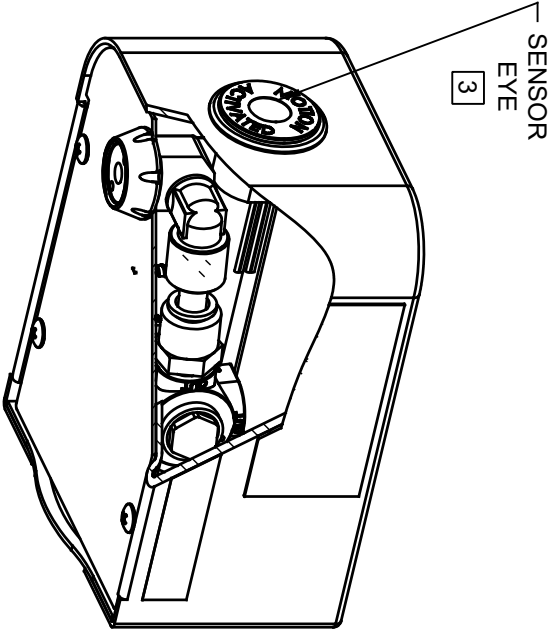



NOTES:

1. SEE SEPARATE INSTALLATION DRAWINGS FOR MOUNTING PLATES AND BACKPANELS
2. WHEN INSTALLING THIS UNIT, LOCAL, STATE OR FEDERAL CODES SHOULD BE ADHERED TO FOR INSTALLATION LOCATIONS, WASTE AND SUPPLY REQUIREMENTS OTHER THAN SHOWN.
- 3 REFER TO 1RKHO.H OPERATION & MAINTENANCE INSTRUCTIONS FOR SENSOR SETUP.



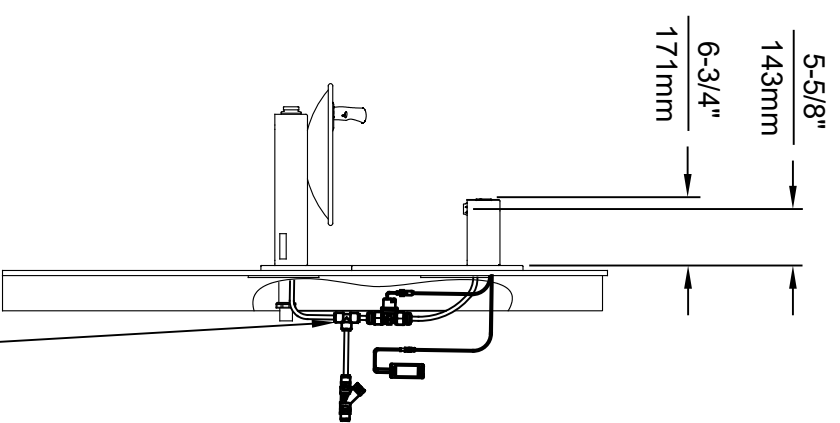
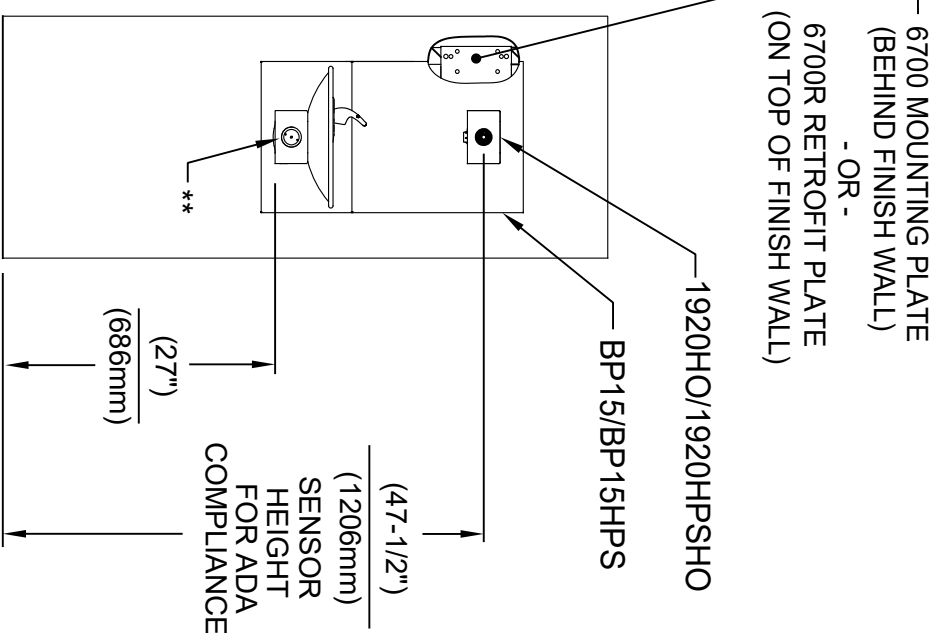
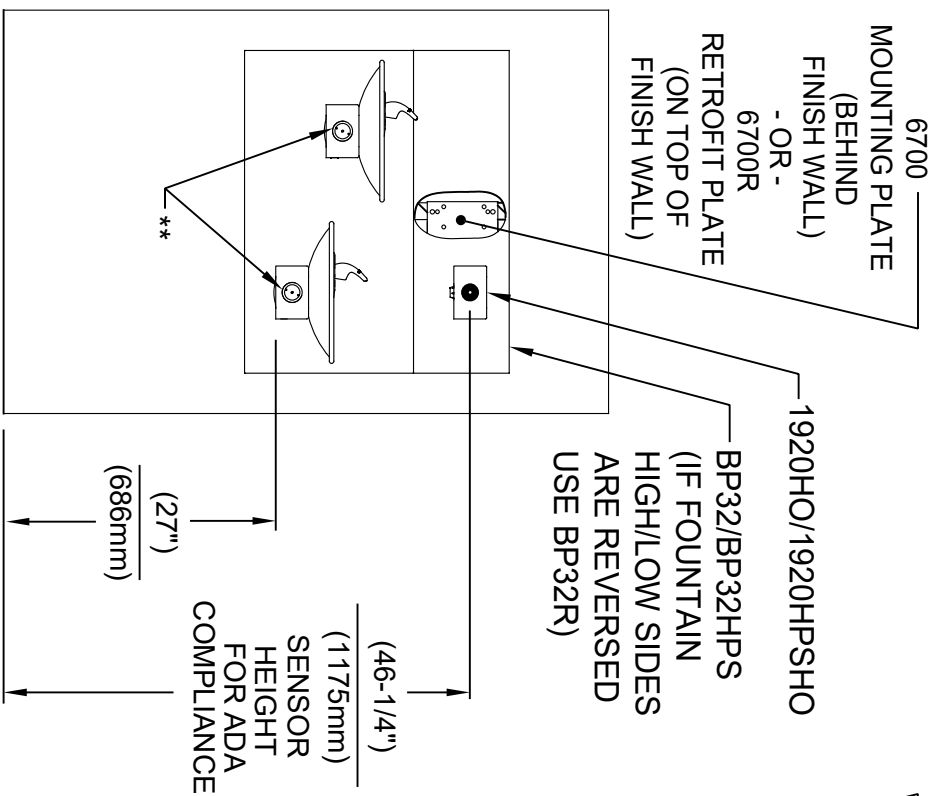
1920HO SERIES MOUNTING HOLE LOCATIONS
(3/8"-16 UNC MOUNTING HARDWARE NOT SUPPLIED)



**Haws®**

1456 KLEPPE LANE
SPARKS, NEVADA, 89431
(775) 359-4712 FAX (775) 359-7424
E-MAIL: HAWS@HAWS.CO.COM
WEBSITE: WWW.HAWS.CO.COM

ECN NO. REVISED PERBY:		MODEL(S)	
5574	ECN: 5744 FV	1920HO/1920HPSHO/1920WMO	
DRAWN: FV	DATE: 08/18/20 BIM	PART NUMBER	
APPROVED: FV	DATE: 10/1/21	0510001063.D	
SCALE: N/A	DRAWING TYPE: INSTALLATION	REVISION:	5
SIZE: A		SHEET 1 OF 7	

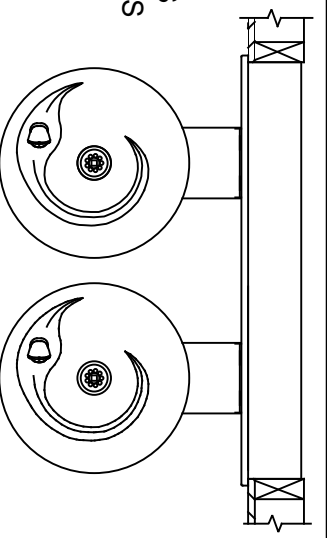


INSTALLATION ABOVE HAWS 1011 & H1011.8 SERIES

INSTALLATION ABOVE HAWS 1001 & H1001.8 SERIES

* IF YOUR FOUNTAIN IS THIS STYLE USE THESE DIMENSIONS

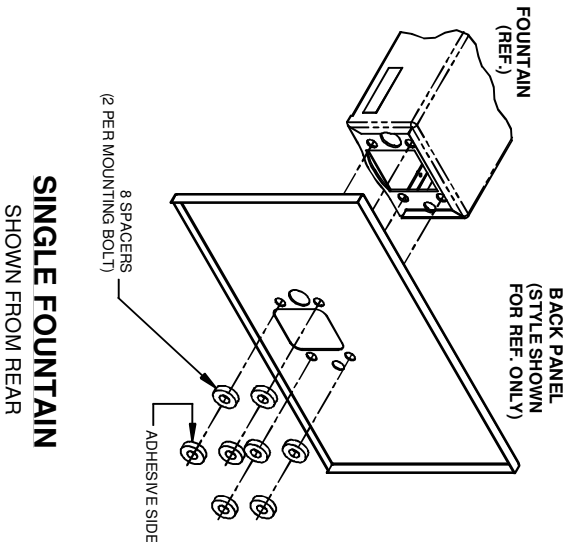
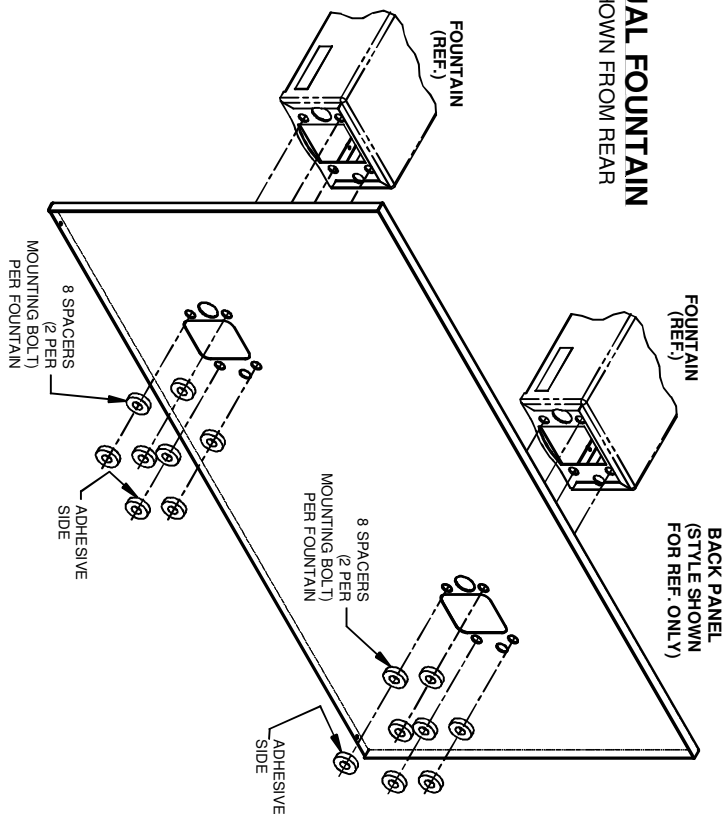
1. SEE SEPARATE INSTALLATION DRAWINGS FOR MOUNTING PLATES AND BACKPANELS
2. WHEN INSTALLING THIS UNIT, LOCAL, STATE OR FEDERAL CODES SHOULD BE ADHERED TO FOR INSTALLATION LOCATIONS, WASTE & SUPPLY REQUIREMENTS OTHER THAN SHOWN.



** EXISTING PUSH BUTTON ASSEMBLY SHOWN, CAN BE CONVERTED TO HANDS OFF STYLE, USING RETRO-FIT KIT MODEL 1RKHO.H OR 2RKHO.H DEPENDING ON CUSTOMER REQUIREMENTS.

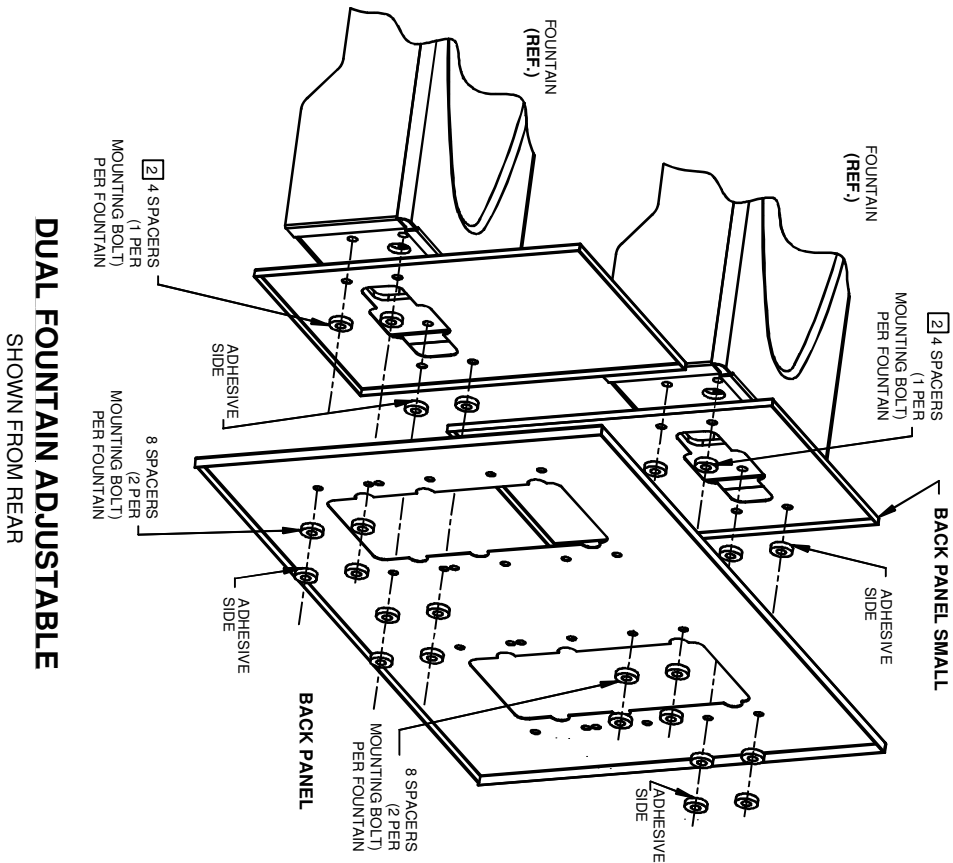
HAWS		HAWS	
ECN NO. REVISED PERBY:	MODEL(S)	1456 KLEPPE LANE	
5574 ECN 5744	1920HO/1920HPSHO/1920WMO	SPARKS, NEVADA 89431	
DATE: 08/18/20	DATE: 08/18/20	(775) 359-4712 FAX (775) 359-7424	
APPROVED: FV	SCALE: N/A	E-MAIL: HAWS@HAWSCO.COM	
10/1/21	DRAWING TYPE: INSTALLATION	WEBSITE: WWW.HAWSCO.COM	
	SIZE: A	PART NUMBER	
	SHEET 2 OF 7	0510001063.D	
		REVISION	
		5	

DUAL FOUNTAIN SHOWN FROM REAR



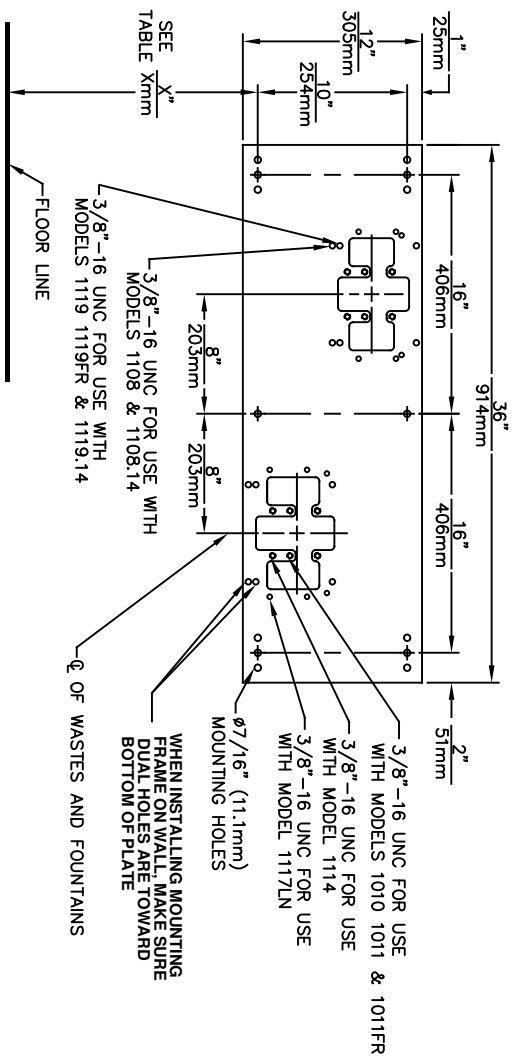
SINGLE FOUNTAIN SHOWN FROM REAR

- NOTES:**
- ON ALL BACK PANEL MODELS, SPACERS ARE NOT USED WHEN A MOUNTING FRAME IS USED EXCEPT AS SPECIFIED IN NOTE 2
 - INDICATED SPACERS ARE USED WITH MOUNTING FRAME (DUAL ADJUSTABLE)



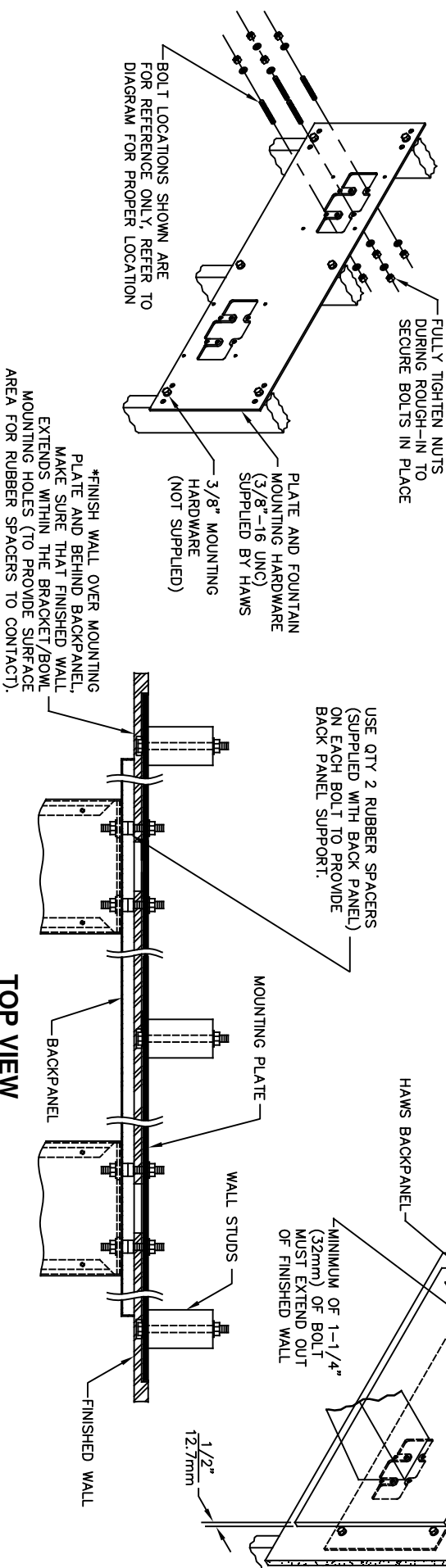
DUAL FOUNTAIN ADJUSTABLE SHOWN FROM REAR

Haws®		1455 KLEPPPE LANE SPARKS, NEVADA 89431 (775) 359-4712 FAX (755) 359-7424 E-MAIL: HAWS@HAWS.CO.COM WEBSITE: WWW.HAWS.CO.COM	
ECN NO. REVISED PER BY:	MODEL(S)	BACK PANEL	
DRAWN: ECN: 4595	DATE: CHKD:	SPACER INSTRUCTIONS	
CL: 102892	DATE:	INSTALLATION	
APPROVED:	SCALE: 1:10	DRAWING TYPE:	SIZE: A
PART NUMBER		DRAWING NO. REV	
0002082219		08292C00 5	



MODEL	
DIMENSION	1011
"x"	25-1/2"[648mm]
LOWER SUPPLY	28-3/4"[730mm]
LOWER WASTE	27-7/8"[708mm]
UPPER SUPPLY	33-3/4"[857mm]
UPPER WASTE	32-7/8"[835mm]
MODEL	
DIMENSION	1119
"x"	27-5/8"[702mm]
LOWER SUPPLY	29-5/8"[752mm]
LOWER WASTE	30-3/4"[781mm]
UPPER SUPPLY	35-3/8"[905mm]
UPPER WASTE	36-1/2"[927mm]
MODEL	
DIMENSION	1011FR
"x"	25-1/2"[648mm]
SUPPLY	SEE FREEZE VALVE ROUGH-IN
WASTE	SEE FREEZE VALVE ROUGH-IN
MODEL	
DIMENSION	1119FR
"x"	27-5/8"[702mm]
SUPPLY	SEE FREEZE VALVE ROUGH-IN
WASTE	SEE FREEZE VALVE ROUGH-IN

MODEL	
1117LN	
DIMENSION	27" [686mm]
"X"	
LOWER SUPPLY	29-1/2" [749mm]
LOWER WASTE	29-1/4" [743mm]
UPPER SUPPLY	35-1/2" [902mm]
UPPER WASTE	35-1/4" [895mm]



CAUTION

REGARDING CONCRETEMASONRY WALL MOUNTING:DO NOT SECURE MOUNTING PLATE TO SAME SIDE OF WALL AS FOUNTAIN. AVOID COMPROMISING INTEGRITY OF WALL WHEN ANCHORING FOUNTAIN. IT IS RECOMMENDED THAT INSTALLER CALL TECHNICAL SUPPORT IF THERE ARE ANY QUESTIONS AS TO HOW TO OBTAIN A PROPER ANCHOR IN CONCRETEMASONRY WALLS. 1-800-766-5612

EON NO. REVISED PERARY:		MODEL(S)		PART NUMBER	
DRAWN: C.L.	DATE: 04-29-93	ECN: 5556	CHKD: DP	0002080023	
APPROVED: FV	DATE: 04/ 3/20			REVISION	
SCALE: N/A	DRAWING TYPE:	6700.4		18	
INSTALLATION		SIZE: A		SHEET 1 OF 1	